



# Seattle Transportation Plan

## A Vision for the Future of Transportation in Seattle

# Agenda

- STP planning process overview
- Update on community engagement activities
- Upcoming milestones



# STP Overview

**The Seattle Transportation Plan (STP) is our commitment to building a transportation system that provides everyone with access to safe, efficient, and affordable options to reach places and opportunities.**

The STP is the vision for the future of transportation in Seattle.

# Plan Ambitions

*The plan will:*

1. **Collectively reimagine our transportation vision**
2. **Plan for people first, connecting them to the places that matter most to them**
3. **Remain grounded in our steadfast values**
4. **Meet the moment with inclusive engagement**



# Why does Seattle need this plan now?



**To address  
urgent and  
emerging  
challenges**



**To inform  
future  
transportation  
funding**



**To align  
with Seattle  
Comprehensive  
Plan Update**

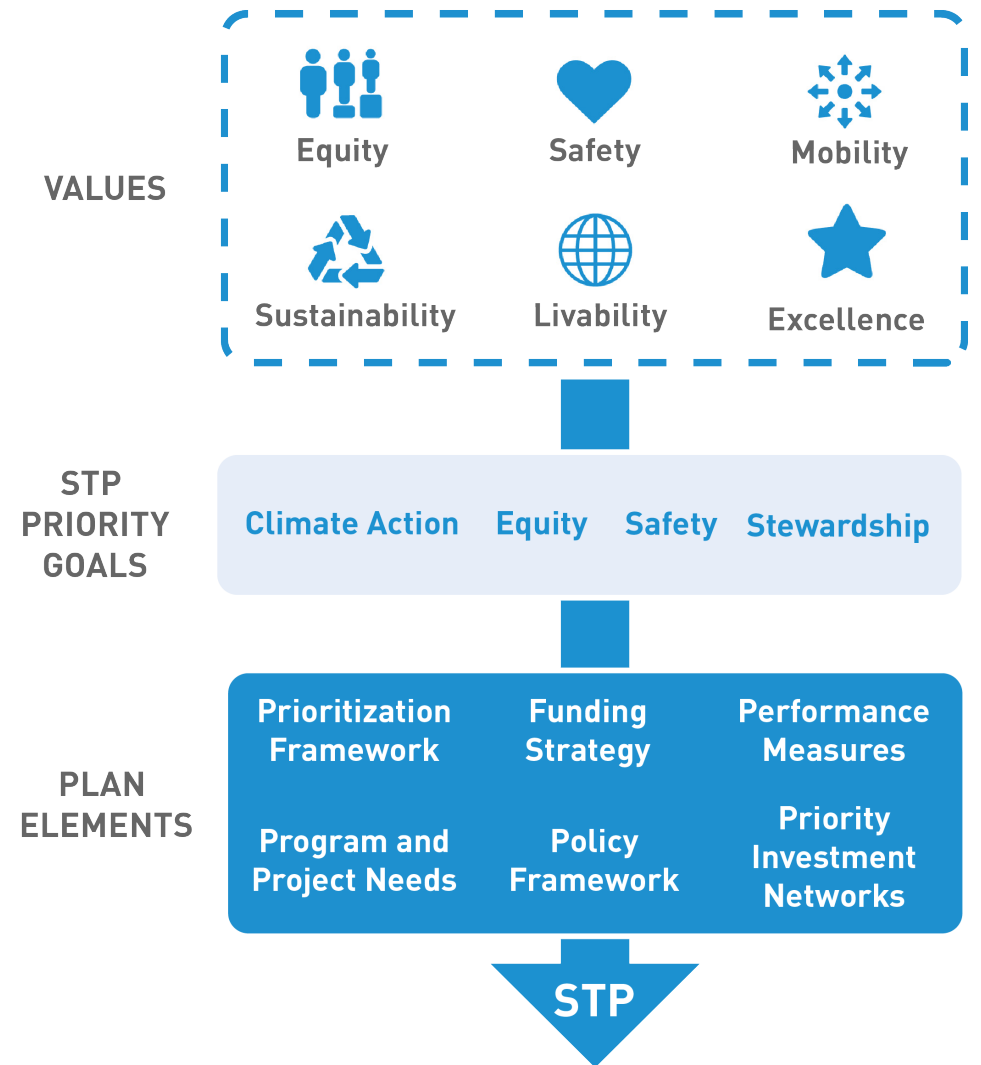


**To plan the limited  
space in our  
right-of-way  
(streets, sidewalks,  
and other public  
spaces)**

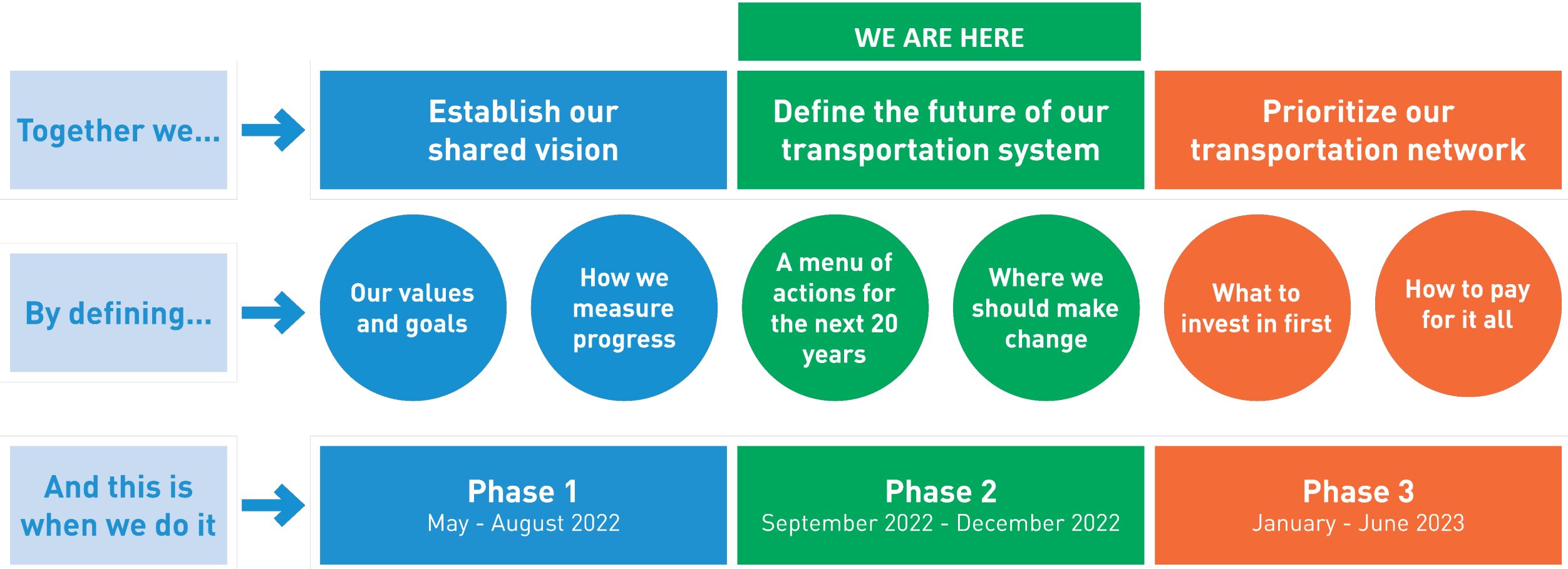
# What values drive our transportation vision?

Our organizational Values feed the Goals and the technical elements of the STP.

Community engagement informed the STP Priority Goals and will influence all elements of the STP.



# Creating the Plan with Community



# Phase 1 Engagement: Establish a Shared Vision

- Community-based organizations (CBOs) and Community Liaisons (CLs) are being compensated for collaboration and participation
  - Khmer Community of Seattle King County/*Noio Pathways/ KIMYUNITY*
  - Asian Pacific American Labor Alliance
  - Central Area Collaborative
  - Duwamish Valley Sustainability Association
  - Smash the Box
  - Estelita's Library
  - Legacy of Equality Leadership and Organizing
  - Department of Neighborhood Community Liaisons
- Example engagement activities led by CBOs and CLs:
  - Targeted opportunities for youth and elders
  - Custom surveys
  - Neighborhood events with flyers and giveaways
  - Interviews with community members



# Phase 1 outreach at-a-glance

26

Meetings/Briefings\*

-  11 Community Meetings
-  7 Board/Commission Meetings
-  4 Interagency Meetings
-  4 Transportation Equity Workgroup Meetings

42

Events\*

-  14 Festivals
-  15 Targeted community events
-  4 Bike-specific events
-  8 Markets
-  1 Listening Session



\*as of September 1, 2022

# Some of what we've heard

Safety and comfort for all ages and abilities

Connectivity, reliability, and ease of use

Investment in sidewalks, bike lanes, and transit

Traffic calming

De-prioritizing the automobile

Emissions reduction

Equitable infrastructure

Maintenance

2,295

Survey participants\*

6,317

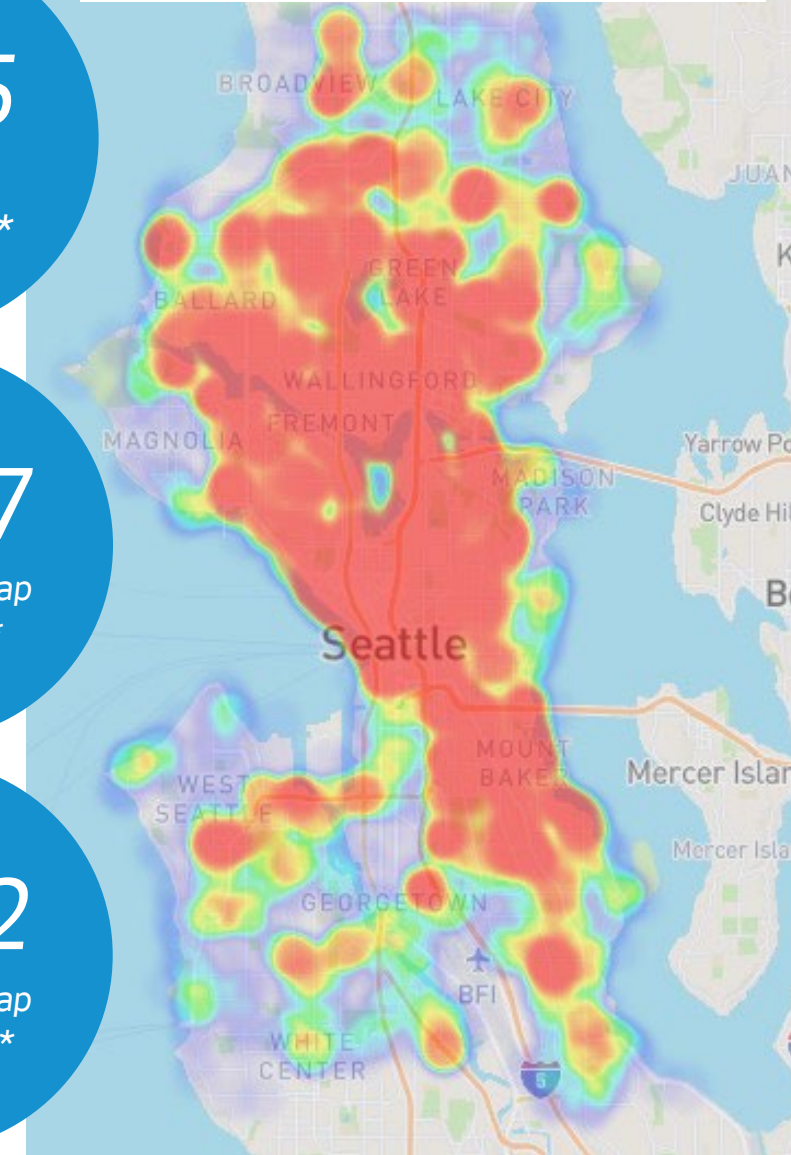
Interactive map comments\*

1,752

Interactive map participants\*

\*as of September 1, 2022

## Interactive Map Comments



# Phase 2 engagement

## We want to know:

- a) Do the Seattle Transportation Plan draft vision, goals, and objectives feel right to you?
- b) What future of transportation in Seattle do you want to see?
- c) What actions should we take to achieve our goals?

Stay involved



## Seattle Transportation Plan ONLINE ENGAGEMENT HUB



View this Site in Additional Languages:

Select Language

The second phase of engagement has begun! During our first phase of engagement, which ran from May–August 2022, we asked about your vision for the future of transportation in Seattle. Now we need your help to turn those ideas into actions.

### NEW ENGAGEMENT OPPORTUNITIES!

REVIEW OUR VISION,  
GOALS, AND OBJECTIVES

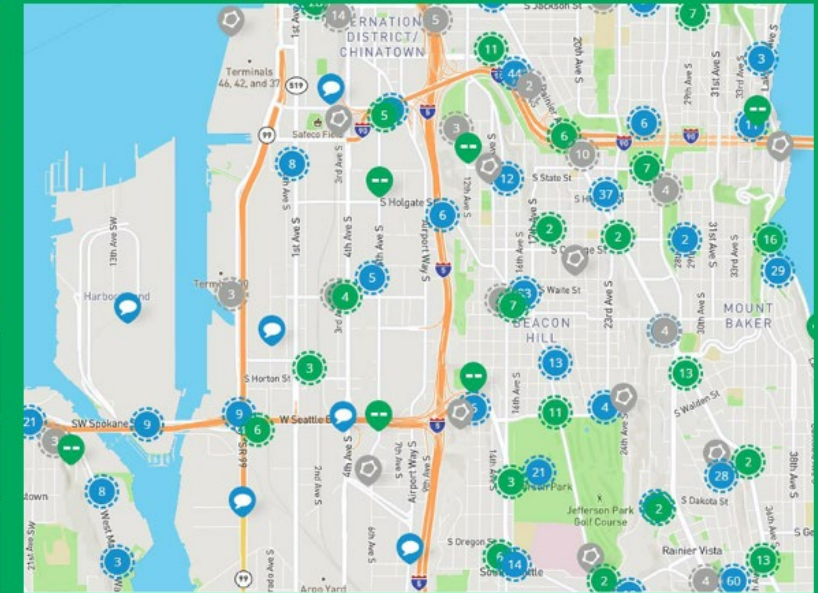
SELECT THE FUTURE  
YOU WANT TO SEE

TELL US WHAT ACTIONS  
YOU LIKE

LEAVE A  
GENERAL COMMENT

JOIN US AT AN  
UPCOMING EVENT

SEND US AN EMAIL OR  
CALL OUR VOICEMAIL LINE



# What's Next?

## Phase 1 Public Engagement Summary

- We've wrapped up this phase and will be sharing what we heard with you very soon!

## Phase 2 Public Engagement (Now - Dec)

- Visit the Online Engagement Hub to share your input and learn more ways to get involved
- Community Events and CL/CBO engagement continues

## Ongoing Background Work

- Policy Framework & Performance Measures
- Network Integration & Scenario Evaluation (Now - Dec)

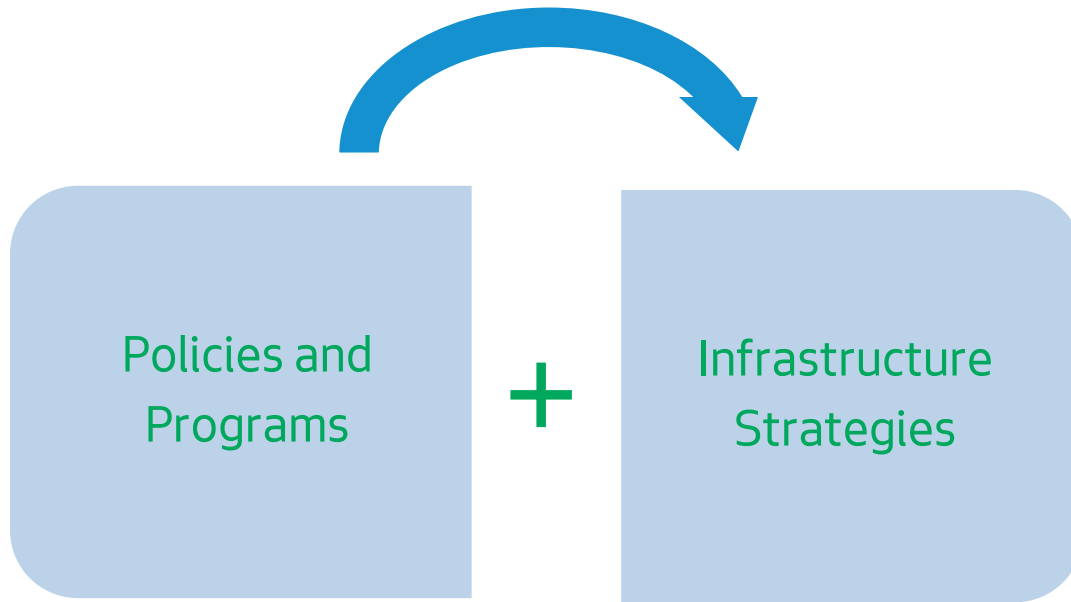


# The Menu of Actions are...

- potential **actions** to attain our goals
- inspired by the outcomes of Phase 1 **engagement**
- **bold** and intended to spur discussion with the community about choices



# The Menu of Actions includes 23 unique...



Ex: Recognize and address inequities in our transportation system.

Ex: Reallocate street space

## Menu of Actions

- Empower the community to guide our future transportation system**  
Implement the Transportation Equity Framework (TEF) actions and strategies to expand community engagement, share decision making, and foster transparency and accountability.
- Center the voices of color and underrepresented groups in our planning processes**  
Prioritize the vision, goals, and needs of historically underrepresented communities in our engagement and decision-making processes.
- Recognize and address inequities in our transportation system**  
Improve safety and access to opportunities in persistently underinvested in neighborhoods, including reconnecting communities impacted by busy streets and highways and expanding access to transit.
- Make more space for pedestrians**  
Ensure Seattle's streets are safe, vibrant, and accessible for people walking and rolling by prioritizing sidewalk gaps and places with the greatest safety concerns.





## Reallocate street space

Repurpose some of our existing traffic lanes into spaces for bikes, transit, sidewalk cafes, etc., while also keeping essential traffic moving.



## Introduce low-emission zones

Reduce the impacts of traffic by directing through trips to designated corridors and establishing car-free or car-light areas for people walking, biking, and rolling.

# Upcoming Milestones

## 2022

- **October:** Full launch of phase 2 of community engagement
- **Fall:** Complete our internal technical analysis, including modal network integration and modernization tasks

## 2023

- **April:** Publish the draft plan for public review
- **April:** Launch phase 3 of community engagement
- **Summer:** Transmit Mayor's recommended plan to City Council



# How Can I Get Involved?



[STP@seattle.gov](mailto:STP@seattle.gov)



[\(206\) 257-2114](tel:(206)257-2114)



<https://seattletransportationplan.infocommunity.org/>

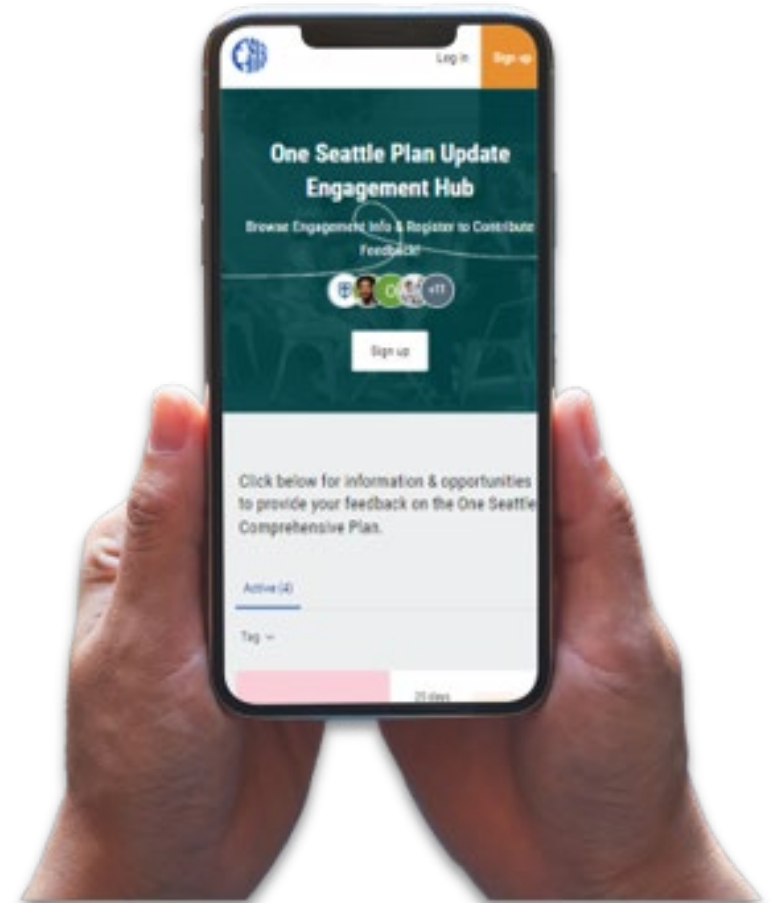


Joanna Valencia and Jonathan Lewis (Project Managers)

Sign up on  
the website  
to subscribe  
for project  
updates



# Get involved with the One Seattle Comprehensive Plan Update!



 **Seattle**  
Office of Planning &  
Community Development

[engage.oneseattleplan.com](https://engage.oneseattleplan.com)



# Thank you!