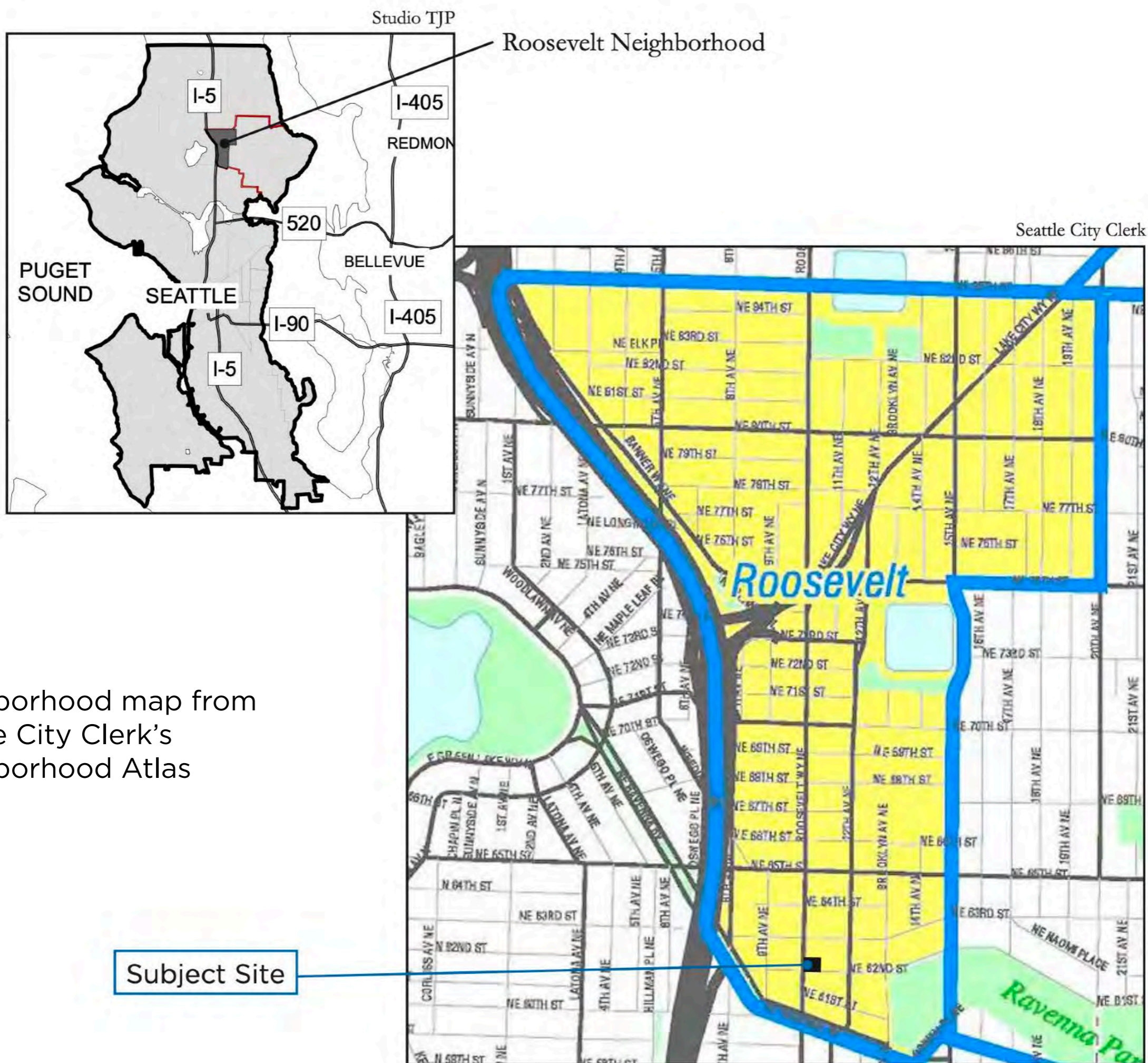




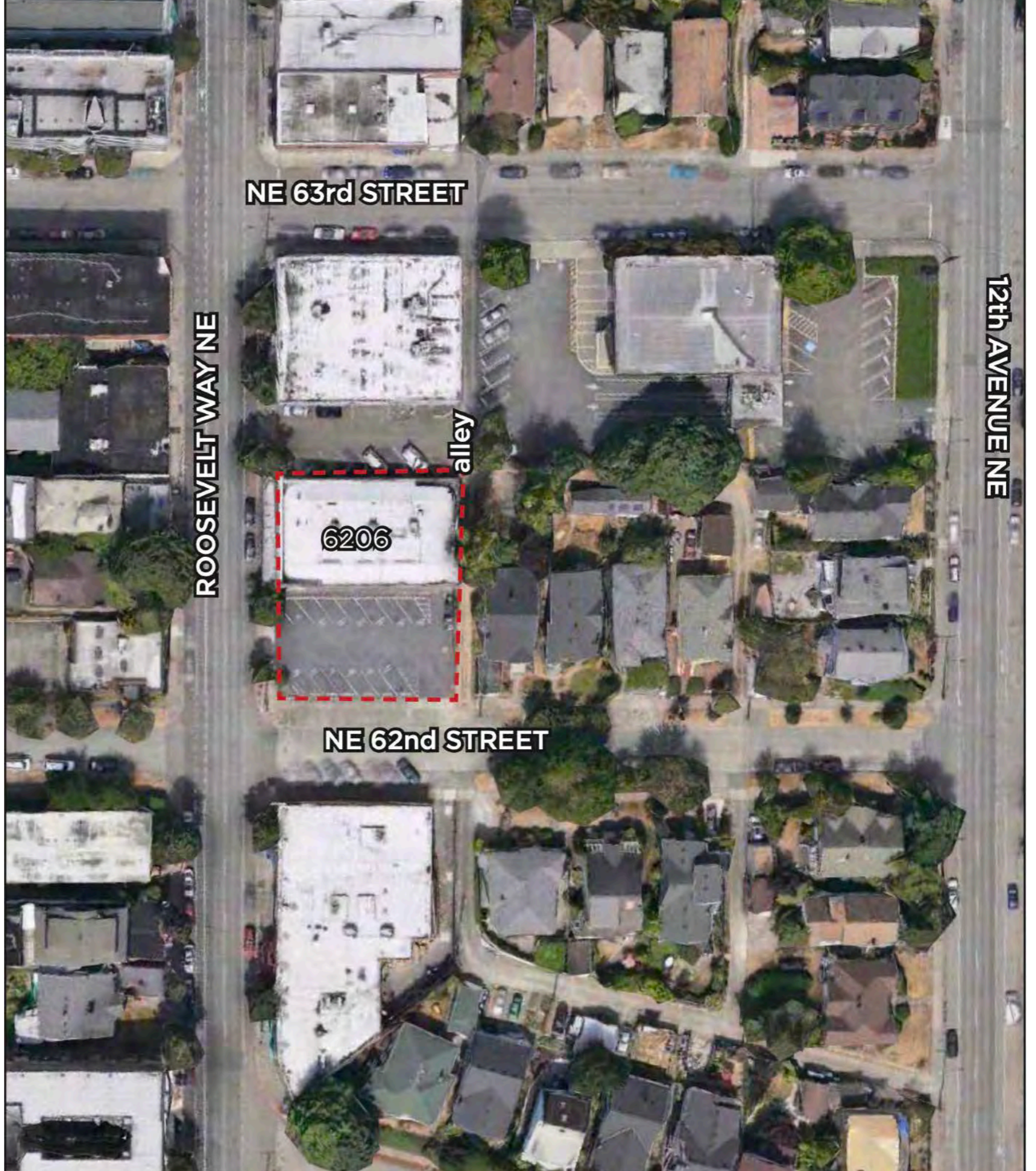
DEFINITIVE AUDIO 6206 ROOSEVELT WAY NE

CITY OF SEATTLE LANDMARK
NOMINATION 10.19.2022



Neighborhood map from
Seattle City Clerk's
Neighborhood Atlas

Subject Site



Aerial View



Site Plan

DefinitiveAudio





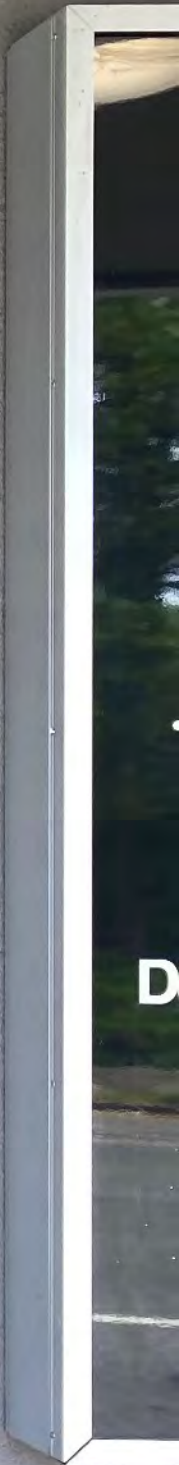
NOW LEASING
NOVO 206.403.1467
NovoSeattle.com





Definitive
definitive.com

9206













DefinitiveAudio

P
1 HOUR
7AM-6PM





PHYSICAL INTEGRITY

An object, site or improvement which is more than twenty-five (25) years old may be designated for preservation as a landmark site or landmark if it has significant character, interest or value as part of the development, heritage or cultural characteristics of the city, state, or nation, if it has integrity or the ability to convey its significance.

Site & Building History

1906 Plat



1936



Built 1939



EDWARDS COFFEE

SAFEWAY

SAFEWAY

SAFEWAY

COWENS UNIVERSITY PARK

131939

(S)

1-21-41

F-89

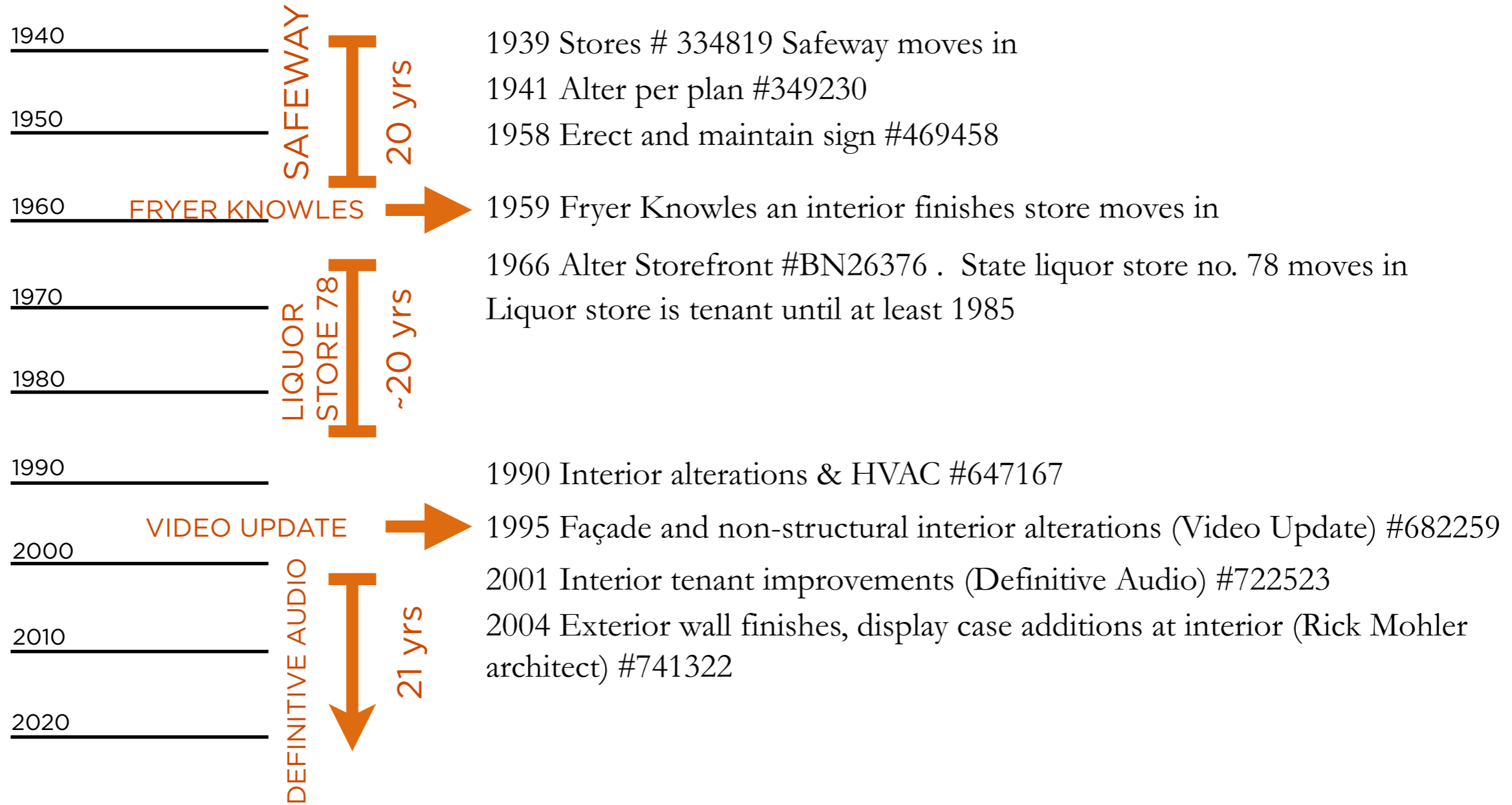
9-25-4

B-10 L-11

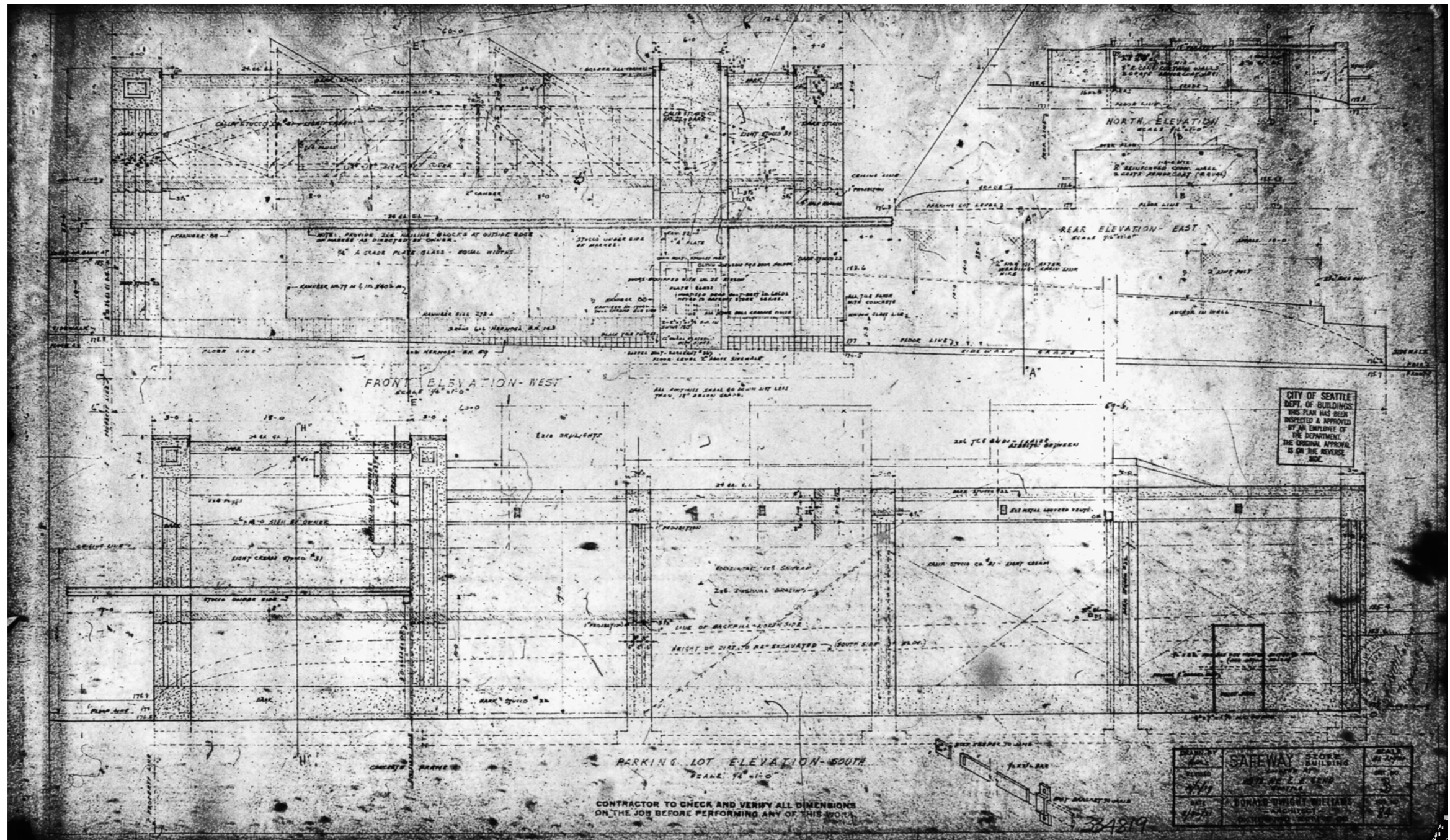
6206 - ROOSEVELT

WAY

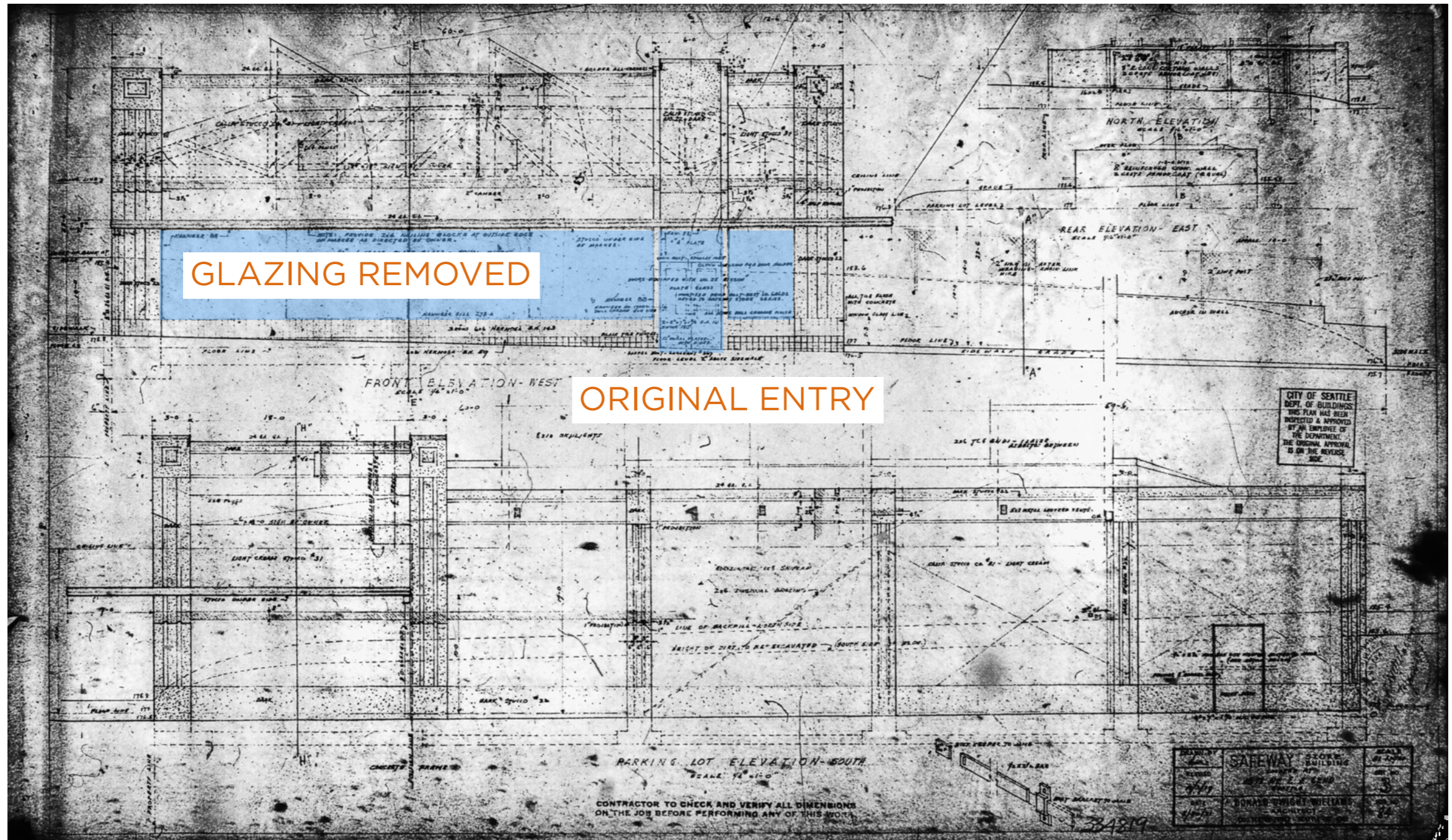
TIMELINE



ORIGINAL DRAWINGS



ORIGINAL DRAWINGS with AREAS OF ALTERATIONS HIGHLIGHTED



GLAZING REMOVED

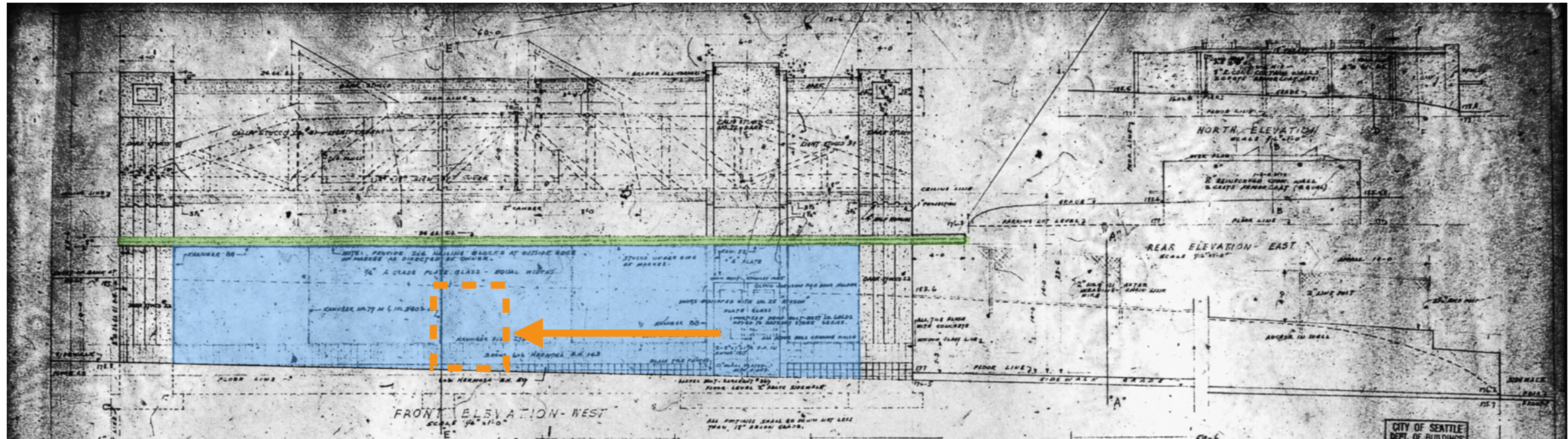
ORIGINAL ENTRY

Ca. 1966

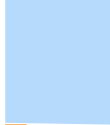








ORIGINAL DRAWINGS with AREAS OF ALTERATIONS HIGHLIGHTED



ALTERED FEATURES

-  1. Storefront glazing removed
-  2. New stucco with control joints
-  3. Front entry relocated
-  4. Lighting
-  5. Canopy has added aluminum channel

SIX CRITERIA FOR LANDMARK DESIGNATION

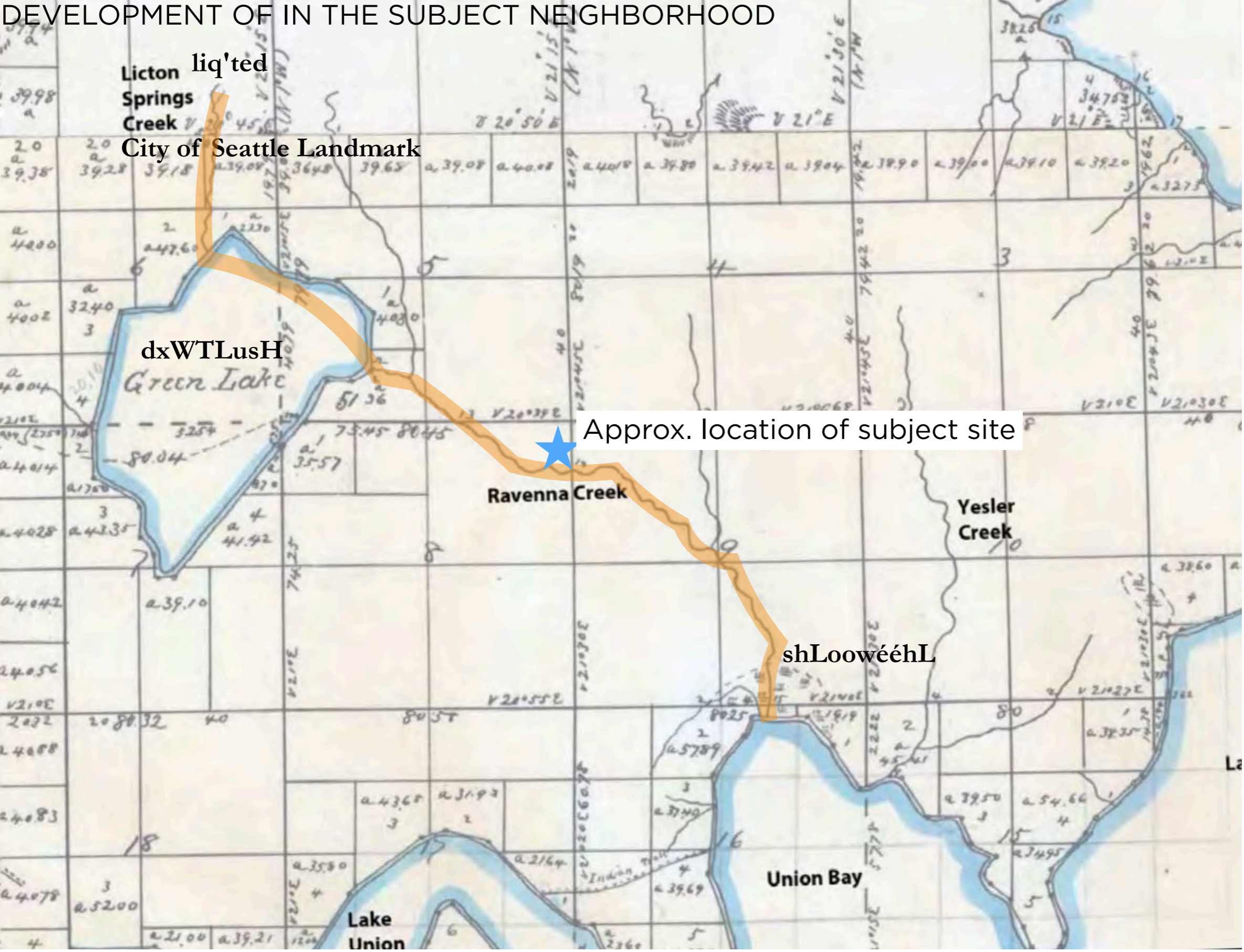
A. It is the location of or is associated in a significant way with an historic **event** with a significant effect upon the community, city, state, or nation.

A. It is the location of or is associated in a significant way with an historic **event** with a significant effect upon the community, city, state, or nation.

B. It is associated in a significant way with the life of a **person** important in the history of the city, state, or nation.

- A. It is the location of or is associated in a significant way with an historic **event** with a significant effect upon the community, city, state, or nation.
- B. It is associated in a significant way with the life of a **person** important in the history of the city, state, or nation.
- C. It is associated in a significant way with a significant aspect of the cultural, political, or economic **heritage** of the community, city, state or nation.

DEVELOPMENT OF IN THE SUBJECT NEIGHBORHOOD



Surveyor map showing waterways of early Seattle

DEVELOPMENT OF IN THE SUBJECT NEIGHBORHOOD



First store in Green Lake, established 1901



Ravenna Park, 1894

DEVELOPMENT OF IN THE SUBJECT NEIGHBORHOOD



Japanese American farmers, NE 85th Street & Latona Avenue N, ca. 1913

DEVELOPMENT OF IN THE SUBJECT NEIGHBORHOOD

1921



10th Avenue NE (Roosevelt Way NE), August 12, 1921
Courtesy Seattle Municipal Archives (1868)

CITY OF SEATTLE LANDMARKS IN THE SUBJECT NEIGHBORHOOD

Dr. Annie Russell House, 5721 8th Avenue NE



Cowen Park Bridge, 15th Avenue NE and Cowen Place NE



Roosevelt High School, 1410 NE 66th Street



MARKETS AND GROCERIES



Public market street vendors
New York City, 1900



Allegheny Market House in Pittsburgh, 1900s



Country store North Carolina, 1939

MARKETS AND GROCERIES IN SEATTLE



Public Market, Seattle, ca. 1910
(1907, extant)



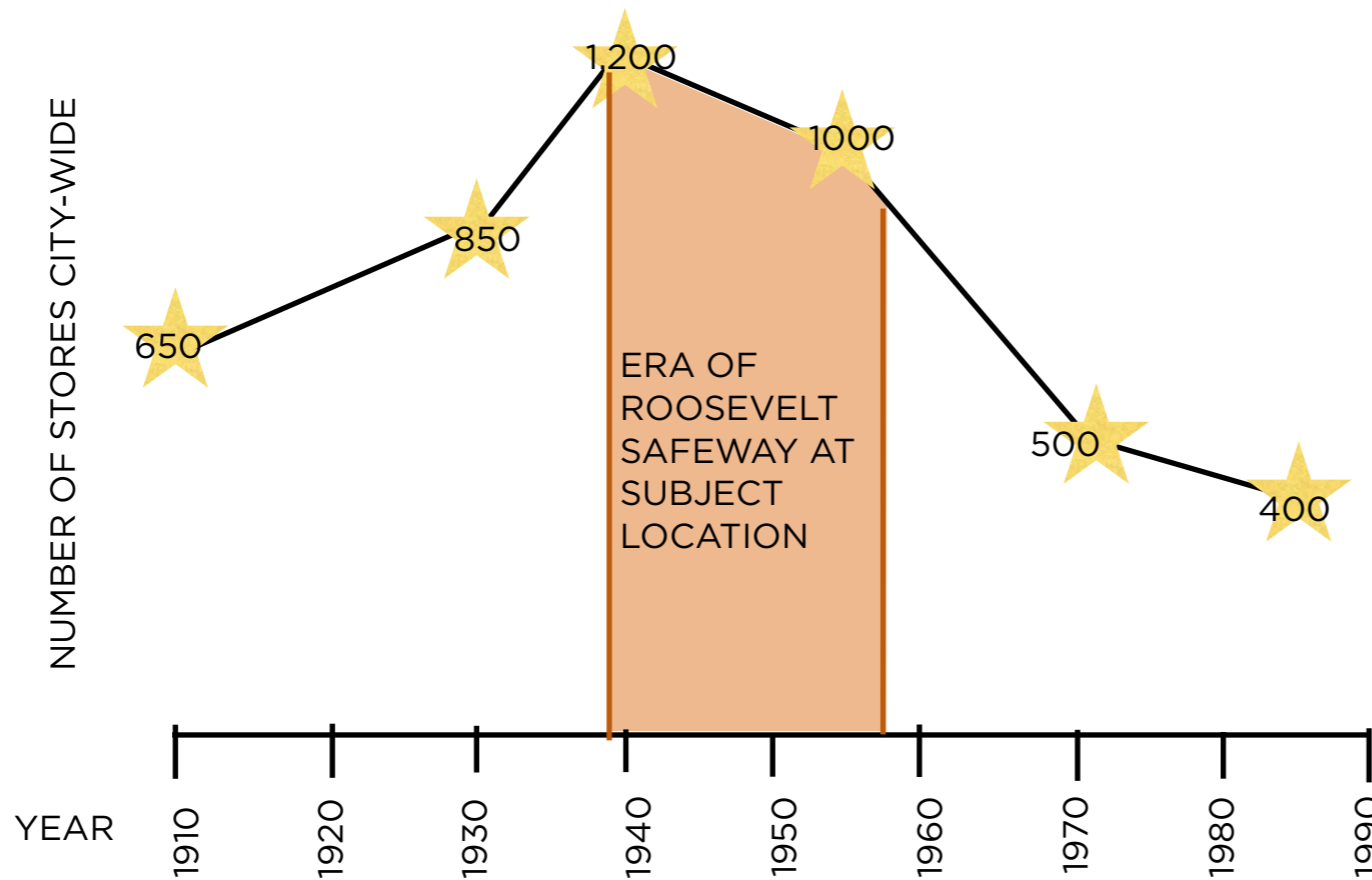
Seattle Public Market, 1930s

MARKETS AND GROCERIES IN SEATTLE



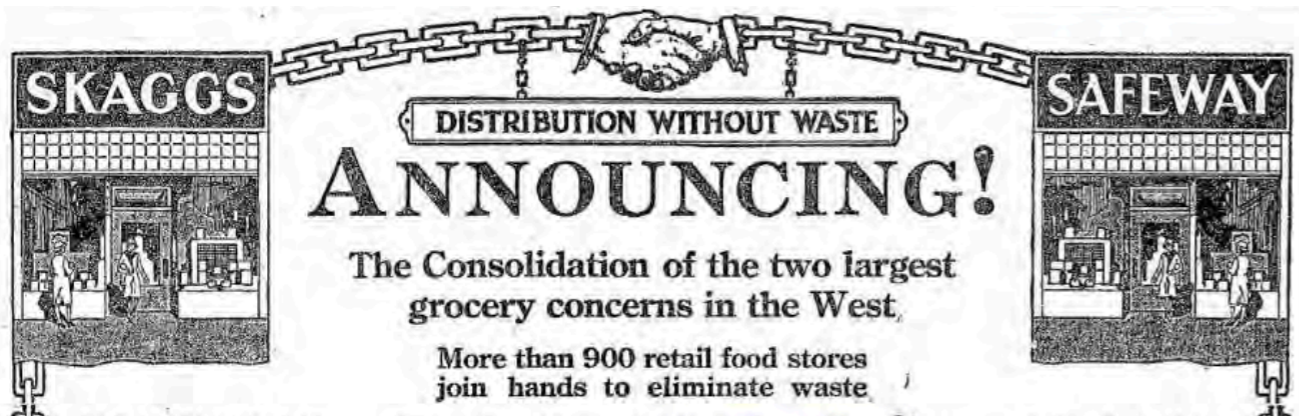
A. A&P supermarket, Seattle, Washington, 1939

B. Example of Safeway interior, Seattle, 1944



GRAPH OF NUMBER OF GROCERY STORES IN SEATTLE OVER TIME

SAFEWAY STORES IN SEATTLE



Skaggs Safeway consolidation announcement, 1926



Skaggs Safeway advertisement, 1929



1942



Safeway at Sixth Avenue W & W McGraw Street 1939, demolished

FORMER SAFEWAY STORES IN SEATTLE



462 N 36th Street, Fremont
1939, extant



1106 N 80th St, Green Lake
1941, extant



1630 Queen Anne Ave N, Queen Anne
1941, altered

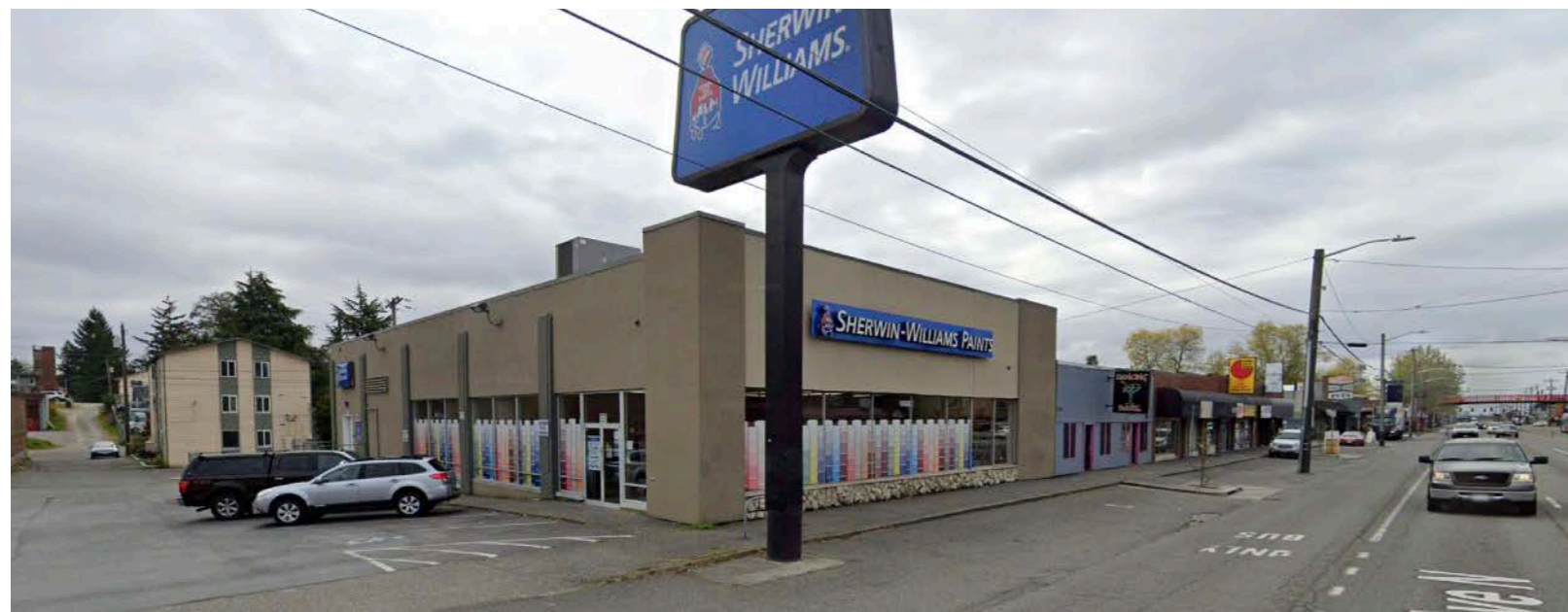
FORMER SAFEWAY STORES IN SEATTLE



409 Eighth Avenue S
Chinatown International District
1941, extant



2222 California Avenue SW
North Admiral
1942, extant



10342 Aurora Avenue N
1942, altered

FORMER SAFEWAY STORES IN SEATTLE AND TACOMA



2915 Rainier Avenue S
North Beacon Hill
1942, demolished



2363 NW 80th Street
Loyal Heights neighborhood
1943, altered



5441 S Sheridan Avenue
Tacoma
1940, extant

SAFEWAY STORES IN SEATTLE, TACOMA & OREGON



35th Avenue SW & W Morgan Street, Seattle
1944 (demolished)



Klamath Falls, OR
1939, status unknown

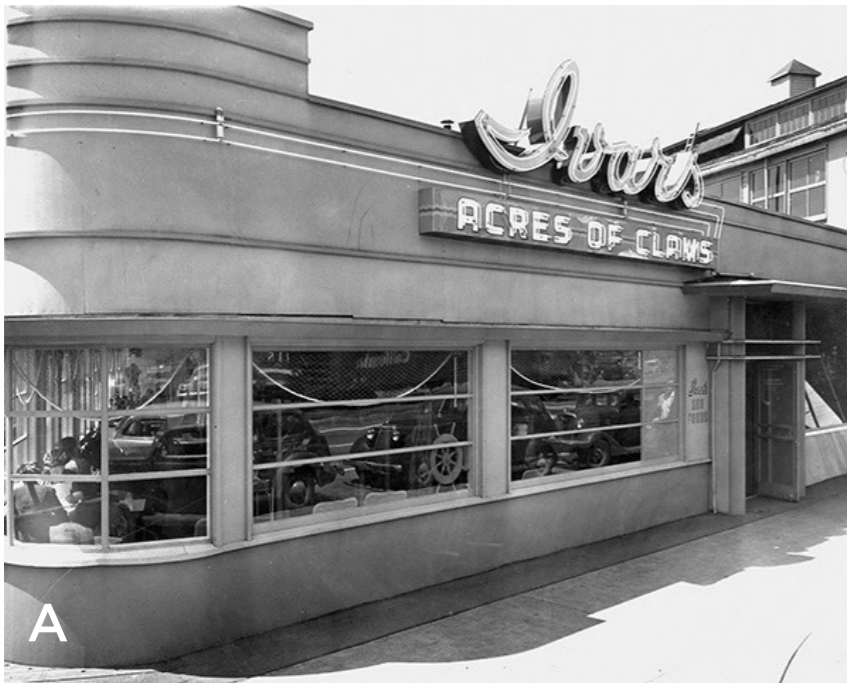


N 36th Street & Dayton Avenue N, Tacoma
1940, extant

- A. It is the location of or is associated in a significant way with an historic **event** with a significant effect upon the community, city, state, or nation.
- B. It is associated in a significant way with the life of a **person** important in the history of the city, state, or nation.
- C. It is associated in a significant way with a significant aspect of the cultural, political, or economic **heritage** of the community, city, state or nation.
- D. It embodies the distinctive visible characteristics of an architectural **style**, period, or method of construction.

ELEMENTS OF STREAMLINE MODERNE

- Smooth, rounded wall surfaces and rounded edges: white stucco
- One-story with a flat roof
- String course at parapet or wall coping, and horizontal grooves or lines in walls
- Horizontal composition
- Asymmetrical façades
- Horizontal metal frame casement, corner, or ribbon windows
- Aluminum, chrome, and stainless steel balustrades and trim
- Glass-block windows and walls
- Mirrored panels
- Curved canopies
- Occasional circular porthole, oculus, round windows
- References to the sea/ocean, such as curves, horizontal vectors and lines, and blue tone finishes



A



B



C

A. Ivar's (Pier 54 location, now demolished)

B. Paramount Pictures Building, 1937, J. Lister Holmes, extant

C. SPUD Fish 'n' Chips (Alki Location, demolished)

STREAMLINE MODERNE



Fire station #17, 101 NE 50th St (1930, architect unknown, City of Seattle Landmark)



Fire station #6, 101 23rd Ave S (1931, George Stewart, City of Seattle Landmark)



Fire station #41, 2416 34th Ave W (1932, Civil Works Administration for City of Seattle Department of Buildings, City of Seattle Landmark)

STREAMLINE MODERNE LANDMARKS IN SEATTLE



Seattle Art Museum at Volunteer Park/Seattle Asian Art Museum, 1933, Carl Gould



Coca-Cola Bottling Plant
1939, Graham [Sr] & Painter with Jesse Shelton



Armory Building, 1939, Naramore & Young



Admiral Theater, 1942, B. Marcus Priteca

STREAMLINE MODERNE BUILDINGS IN THE ROOSEVELT DISTRICT



Standard Radio, 1028 NE 65th St
1947, demolished



Standard Radio façade
at Roosevelt light rail station

STREAMLINE MODERNE BUILDINGS IN THE ROOSEVELT DISTRICT



Hollywood Theater, 6516 Roosevelt Way NE
formerly Cloud 9, 1923, George Grove



STREAMLINE MODERNE & THE DEFINITIVE AUDIO BUILDING



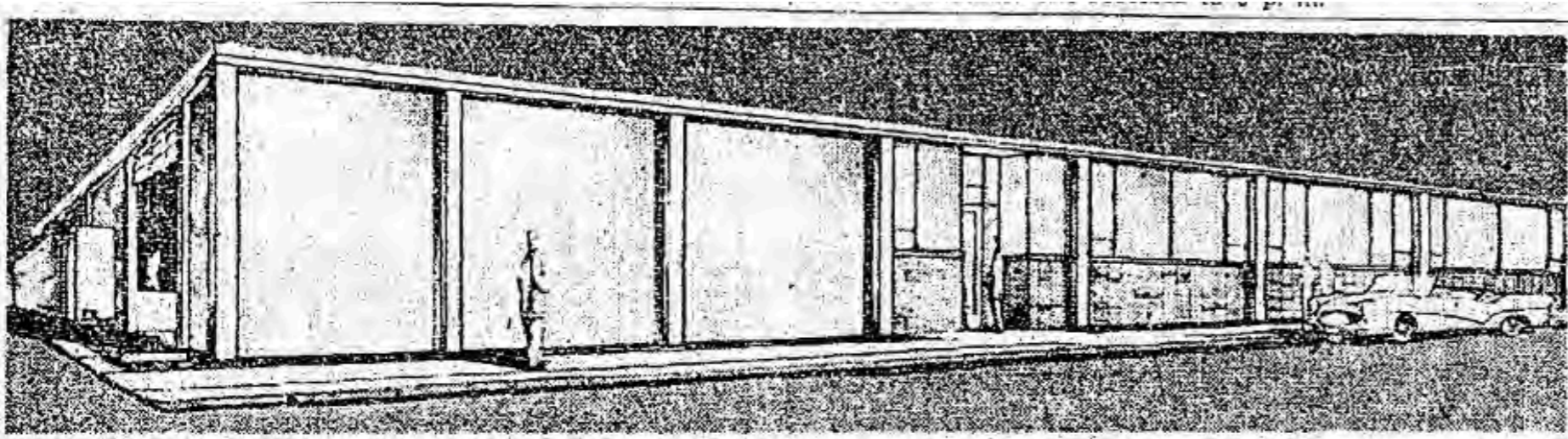
- Smooth wall surfaces, rounded wall surfaces and rounded edges: white stucco
- One-story with a flat roof
- String course at parapet or wall coping, and horizontal grooves or lines in walls
- Horizontal composition
- Asymmetrical façades
- Horizontal metal frame casement, corner, or ribbon windows
- Aluminum, chrome, and stainless steel balustrades and trim
- Glass-block windows and walls
- Mirrored panels
- Curved canopies
- Occasional circular porthole, oculus, round windows
- References to the sea/ocean, such as curves, horizontal vectors and lines, and blue tone finishes

- A. It is the location of or is associated in a significant way with an historic **event** with a significant effect upon the community, city, state, or nation.
- B. It is associated in a significant way with the life of a **person** important in the history of the city, state, or nation.
- C. It is associated in a significant way with a significant aspect of the cultural, political, or economic **heritage** of the community, city, state or nation.
- D. It embodies the distinctive visible characteristics of an architectural **style**, period, or method of construction.
- E. It is an outstanding work of a **designer or builder**.

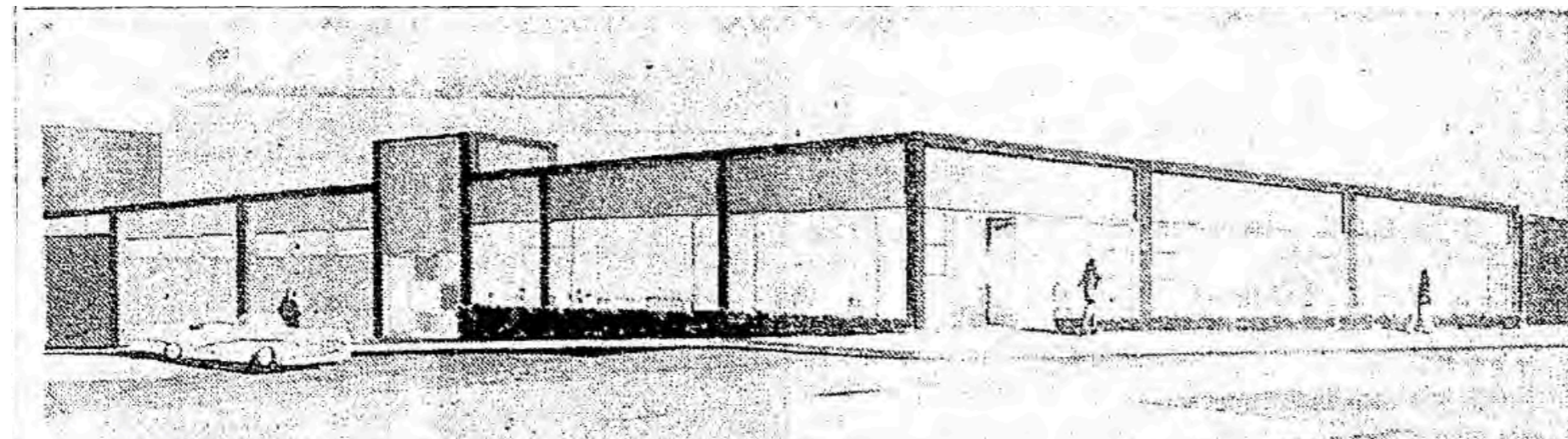


Don Williams (1908-1990)

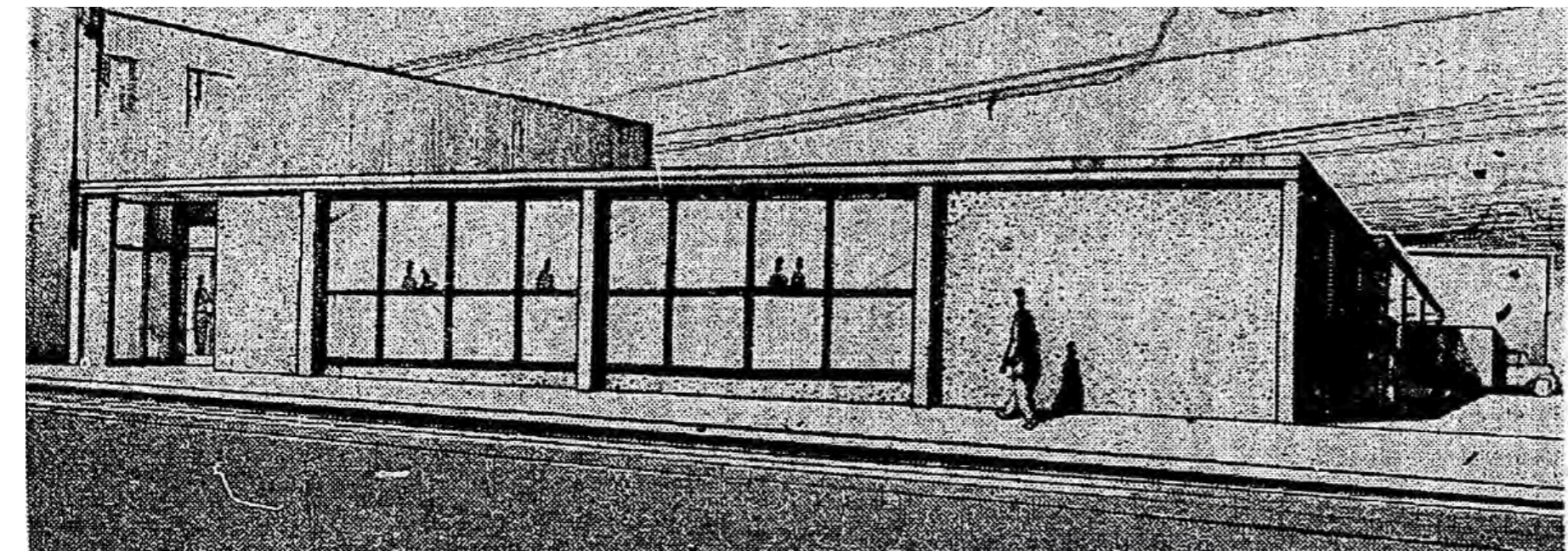
ARCHITECT DON WILLIAMS: BUILDINGS IN SEATTLE



J. R. Watkins Co. headquarters
1955, demolished

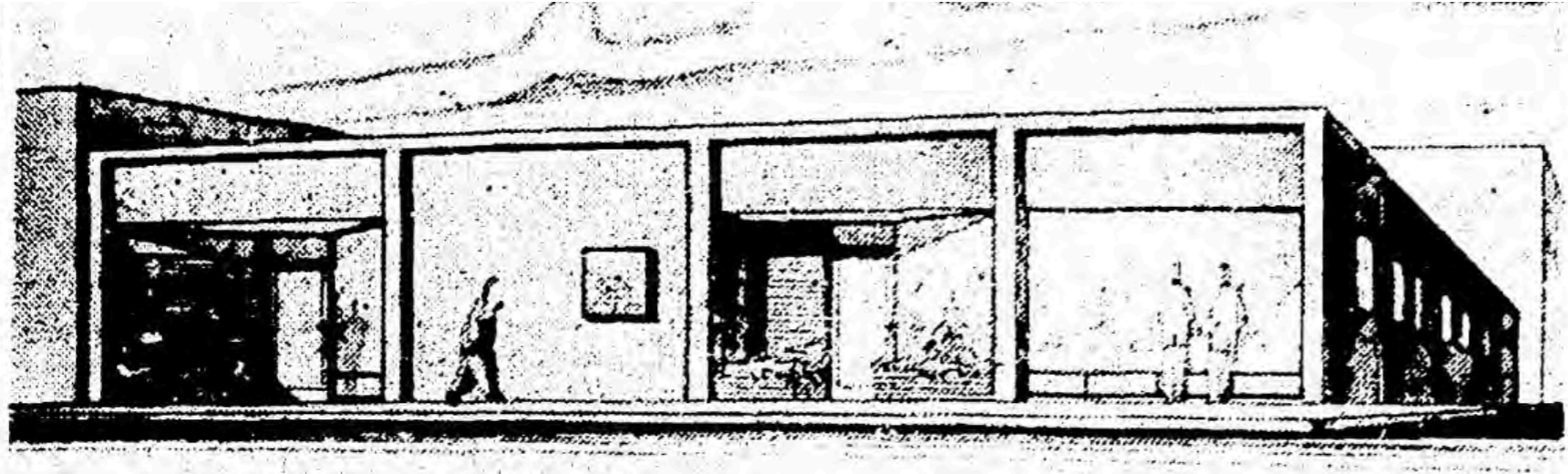


W.E. McElfrick Building
1955, demolished



US Post Office
International District
1956, demolished

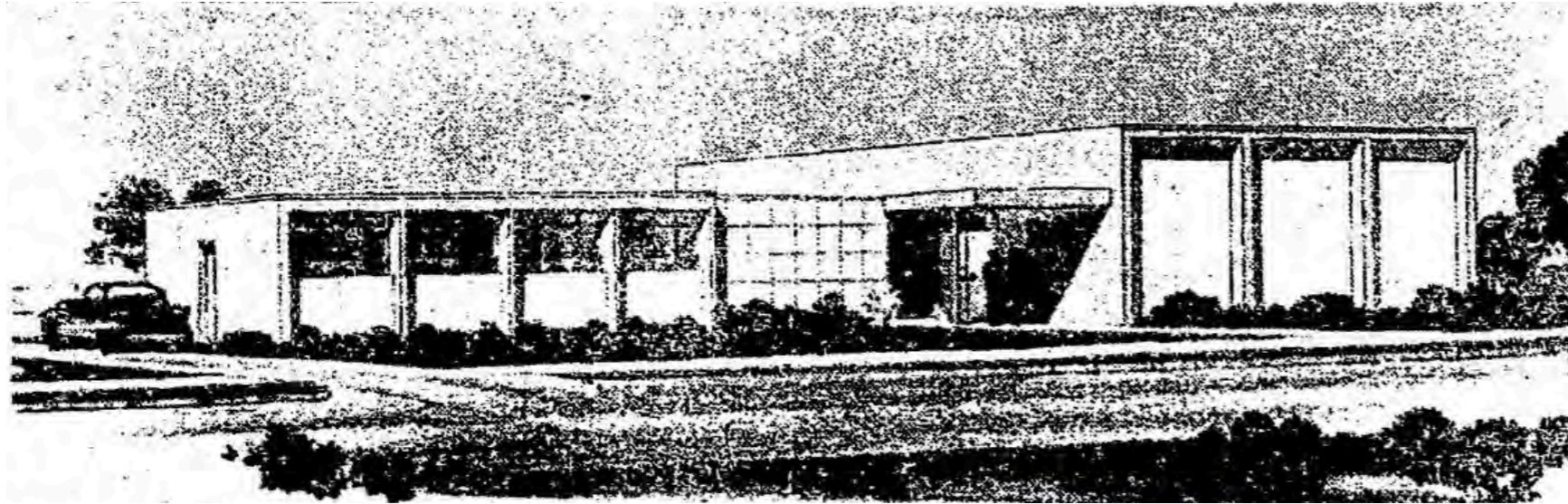
ARCHITECT DON WILLIAMS



Moore Business Forms
and Dictaphone Corp. Building
1956, extant



Moore Business Forms
and Dictaphone Corp. Building
2022

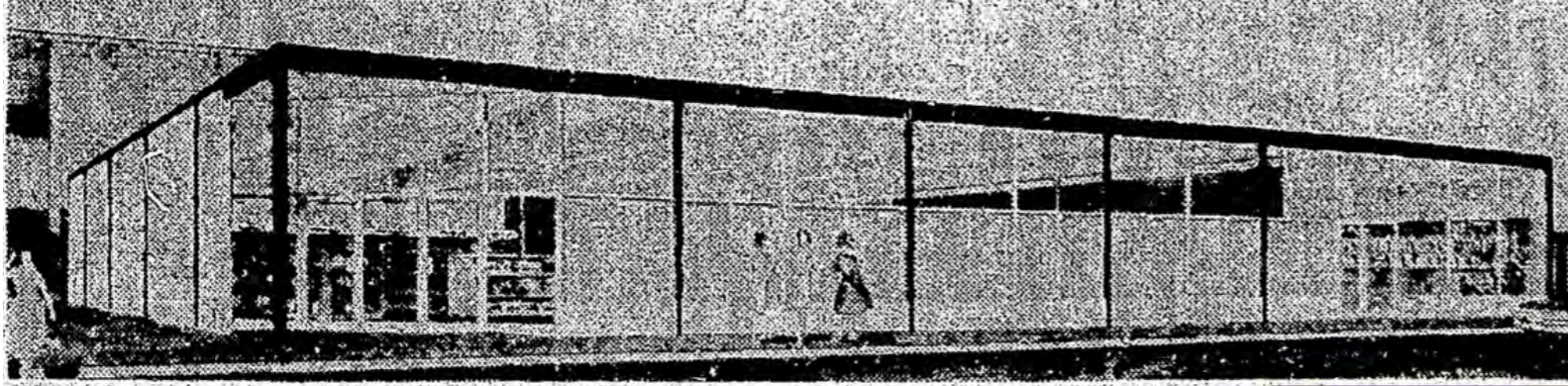


Renton Carpenters Union Building
231 Burnett Avenue N, Renton, WA
1957, extant

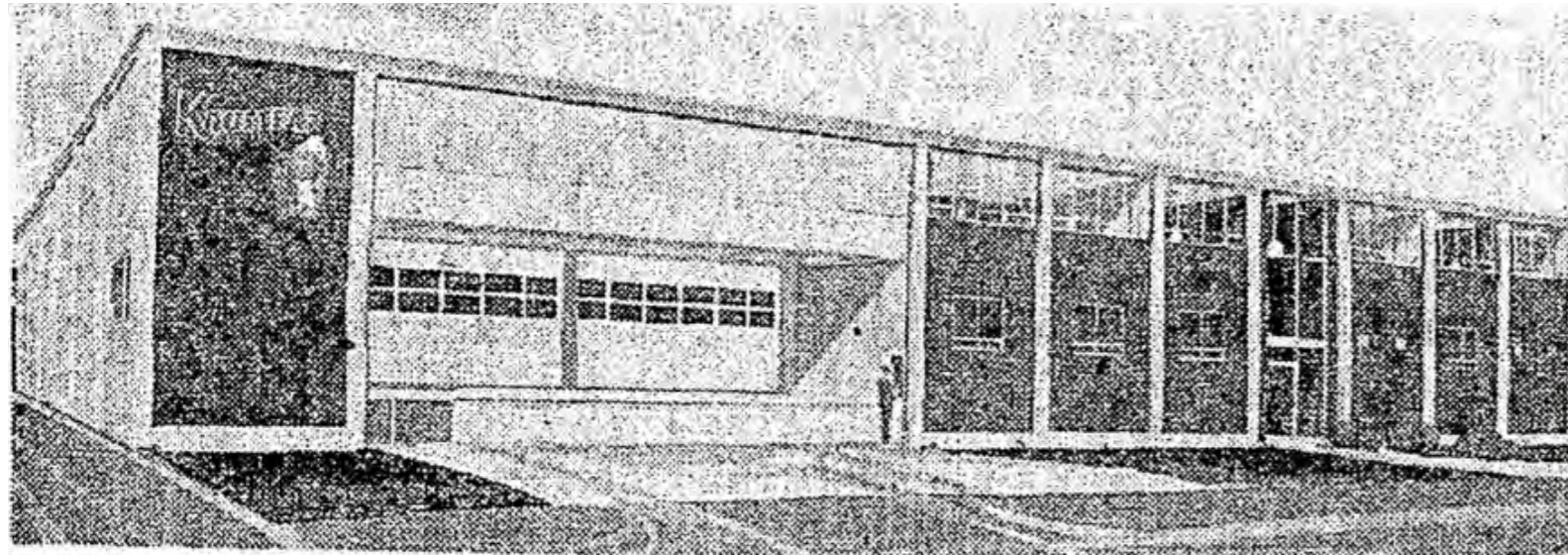


Renton Carpenters Union Building
231 Burnett Avenue N, Renton, WA
1957, extant

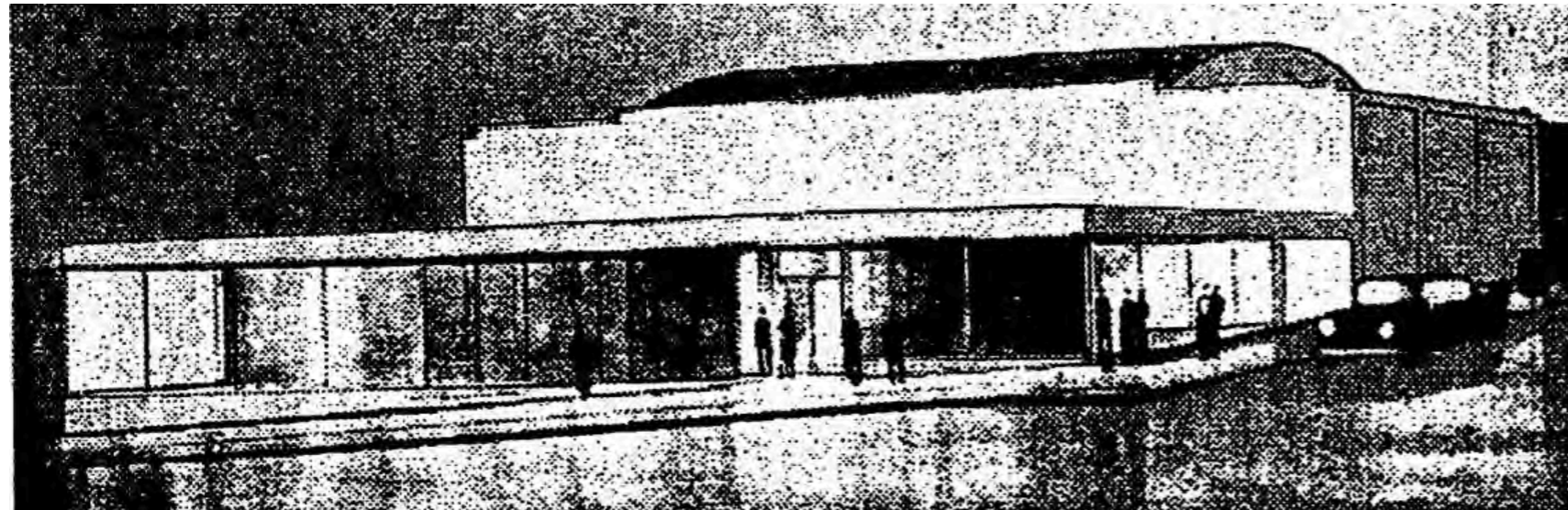
ARCHITECT DON WILLIAMS



Federal Way Drugstore, 1961

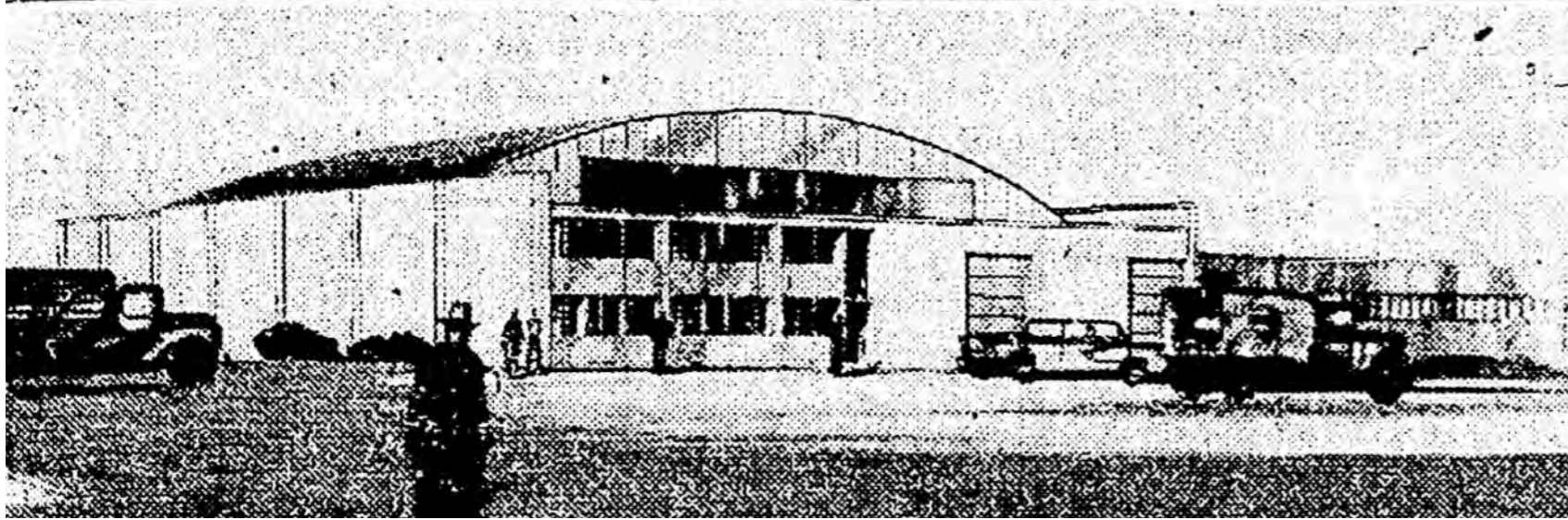


Continental Mills Inc. Headquarters
1961

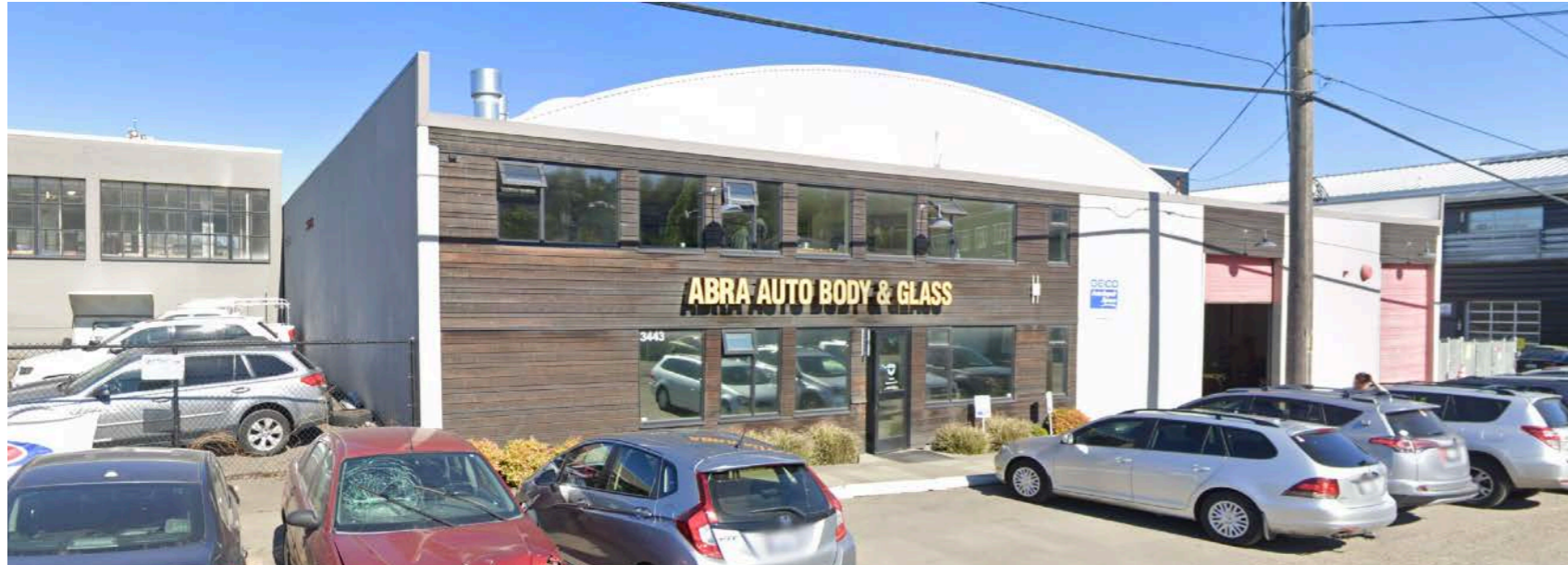


DeVoss Desk Co. Building
1956, demolished

ARCHITECT DON WILLIAMS



Shifton Plywood Co.
1958, extant



Shifton Plywood Co.,
Interbay area of Seattle
2021

ARCHITECT DON WILLIAMS, LOCAL ARCHITECT FOR THREE SAFEWAY STORES



- Safeway, 6206 Roosevelt Way NE, (1939, permit architect, extant)
- Safeway, 1630 Queen Anne Avenue N, (1941, permit architect, altered)
- Safeway, 409 Eighth Avenue S, (1941, permit architect, altered)

- A. It is the location of or is associated in a significant way with an historic **event** with a significant effect upon the community, city, state, or nation.
- B. It is associated in a significant way with the life of a **person** important in the history of the city, state, or nation.
- C. It is associated in a significant way with a significant aspect of the cultural, political, or economic **heritage** of the community, city, state or nation.
- D. It embodies the distinctive visible characteristics of an architectural **style**, period, or method of construction.
- E. It is an outstanding work of a **designer or builder**.
- F. Because of its prominence of spatial **location**, contrast of siting, age, or scale, it is an easily identifiable feature of its neighborhood or the city and contributes to the distinctive quality or identity of such neighborhood or city.

SUBJECT BUILDING





TURNING VEHICLES →
STOP FOR [pedestrian and bicycle icons]

SUBJECT BUILDING

speakerlab
BUILDING
FOR LEASE
206 550 3802

NE 63rd St

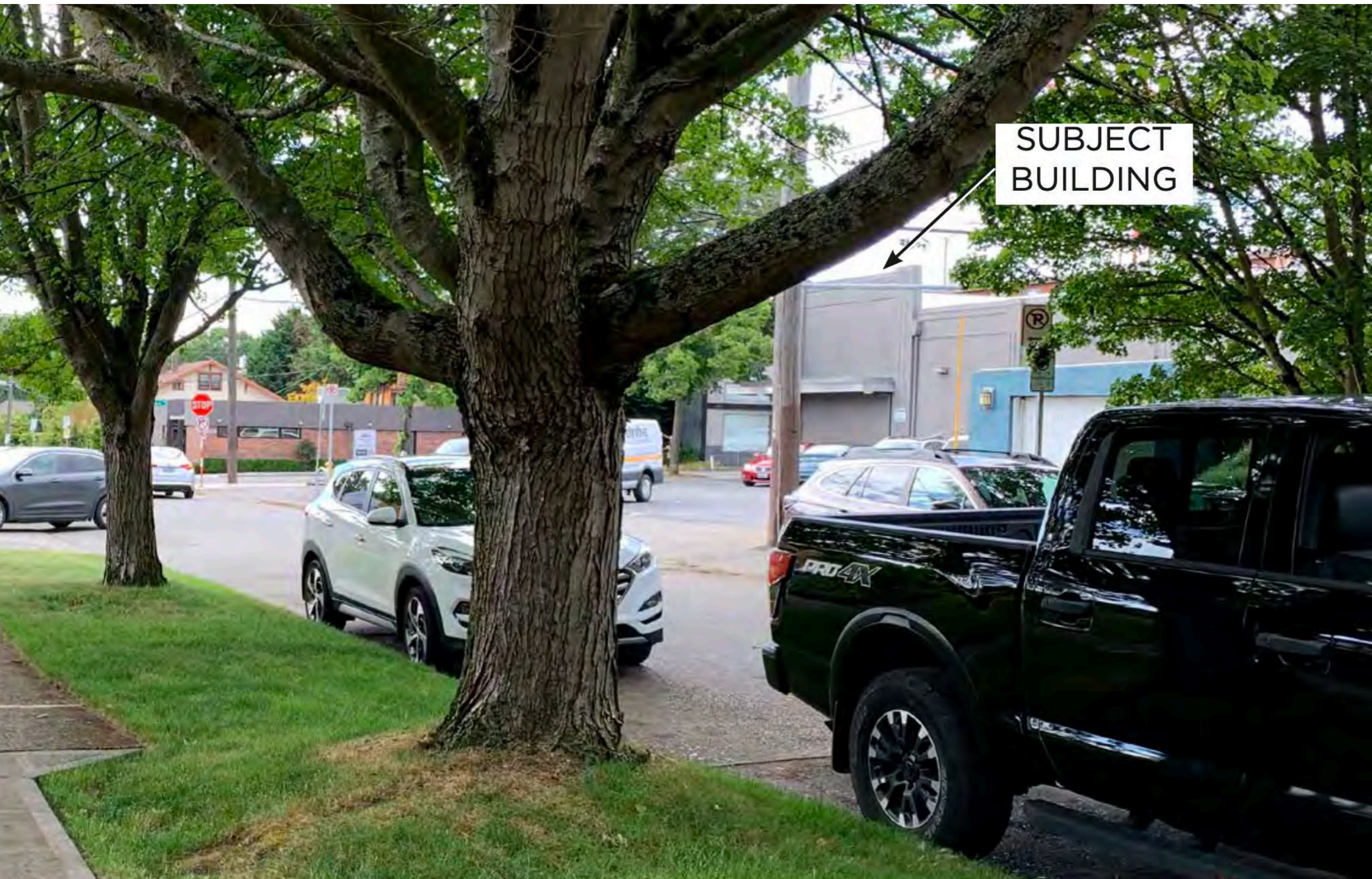
Nice
NAILS & SPA

ROOSEV
Ham
917

SUBJECT BUILDING

NE 62nd
Roosevelt Wy NE¹⁰⁰⁰





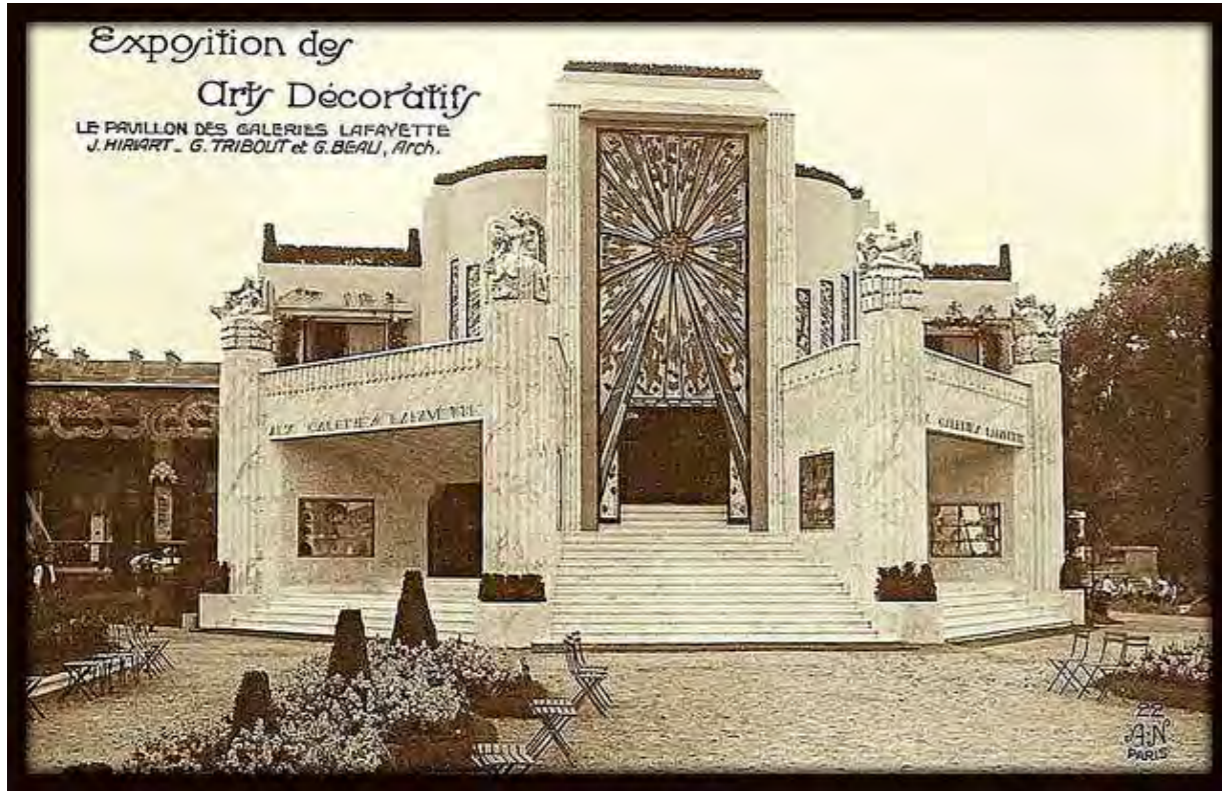
SUBJECT
BUILDING

- A. It is the location of or is associated in a significant way with an historic **event** with a significant effect upon the community, city, state, or nation.
- B. It is associated in a significant way with the life of a **person** important in the history of the city, state, or nation.
- C. It is associated in a significant way with a significant aspect of the cultural, political, or economic **heritage** of the community, city, state or nation.
- D. It embodies the distinctive visible characteristics of an architectural **style**, period, or method of construction.
- E. It is an outstanding work of a **designer or builder**.
- F. Because of its prominence of spatial **location**, contrast of siting, age, or scale, it is an easily identifiable feature of its neighborhood or the city and contributes to the distinctive quality or identity of such neighborhood or city.



DEFINITIVE AUDIO 6206 ROOSEVELT WAY NE

ART DECO & STREAMLINE MODERNE



1925 Exposition Internationale des Arts Decoratifs et Industriels Modernes, Pavillon des Galeries Lafayette, Paris



Empire State Building (1931, Shreve, Lamb & Harmon)



Top of Rockefeller Center (1940, Raymond Hood)

ART DECO & STREAMLINE MODERNE

Art Deco historic district, Miami Beach



Coulter's Department Store, Los Angeles (1938-39, Stiles O. Clements, demolished)



Greyhound Bus Terminal, Cleveland 1948, William Strudwick Arrasmith National Register



STREAMLINE MODERNE



Blue Plate Building, New Orleans (1942-43, August Perez Jr., National Register, now Blue Plate Artists Lofts)



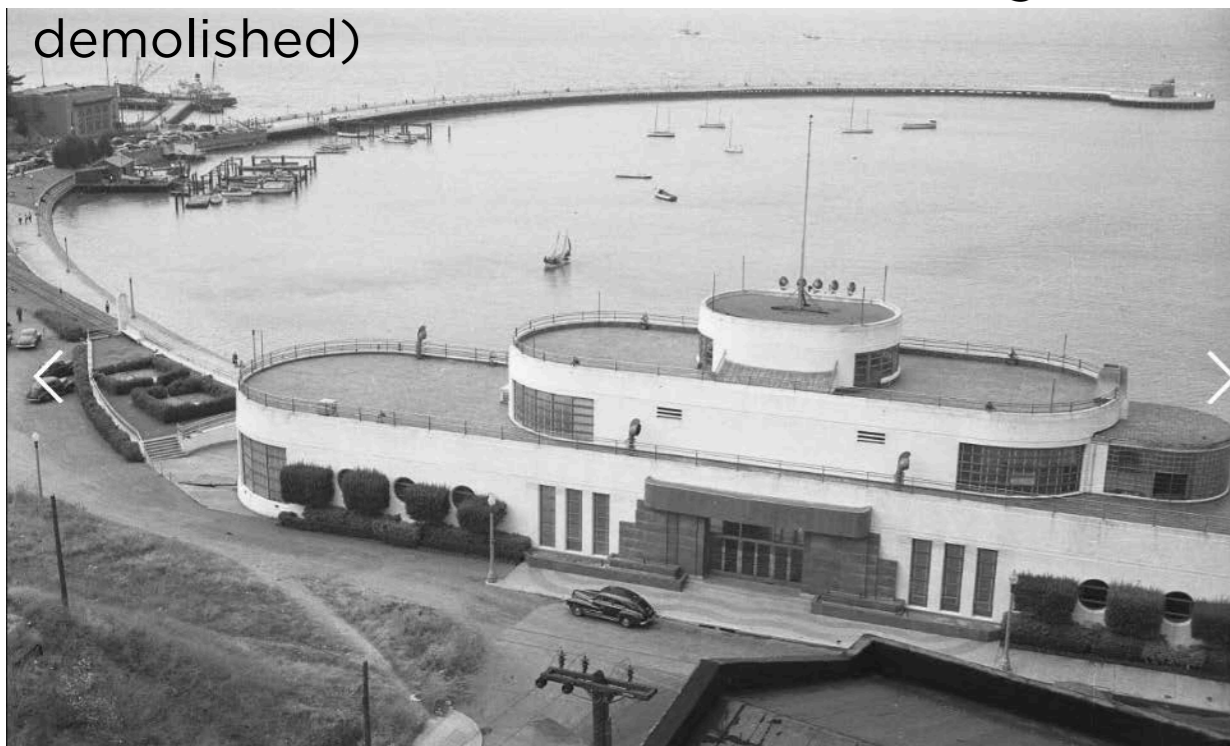
Normal Theater, Normal, IL 1937, Arthur F. Moratz National Historic Register



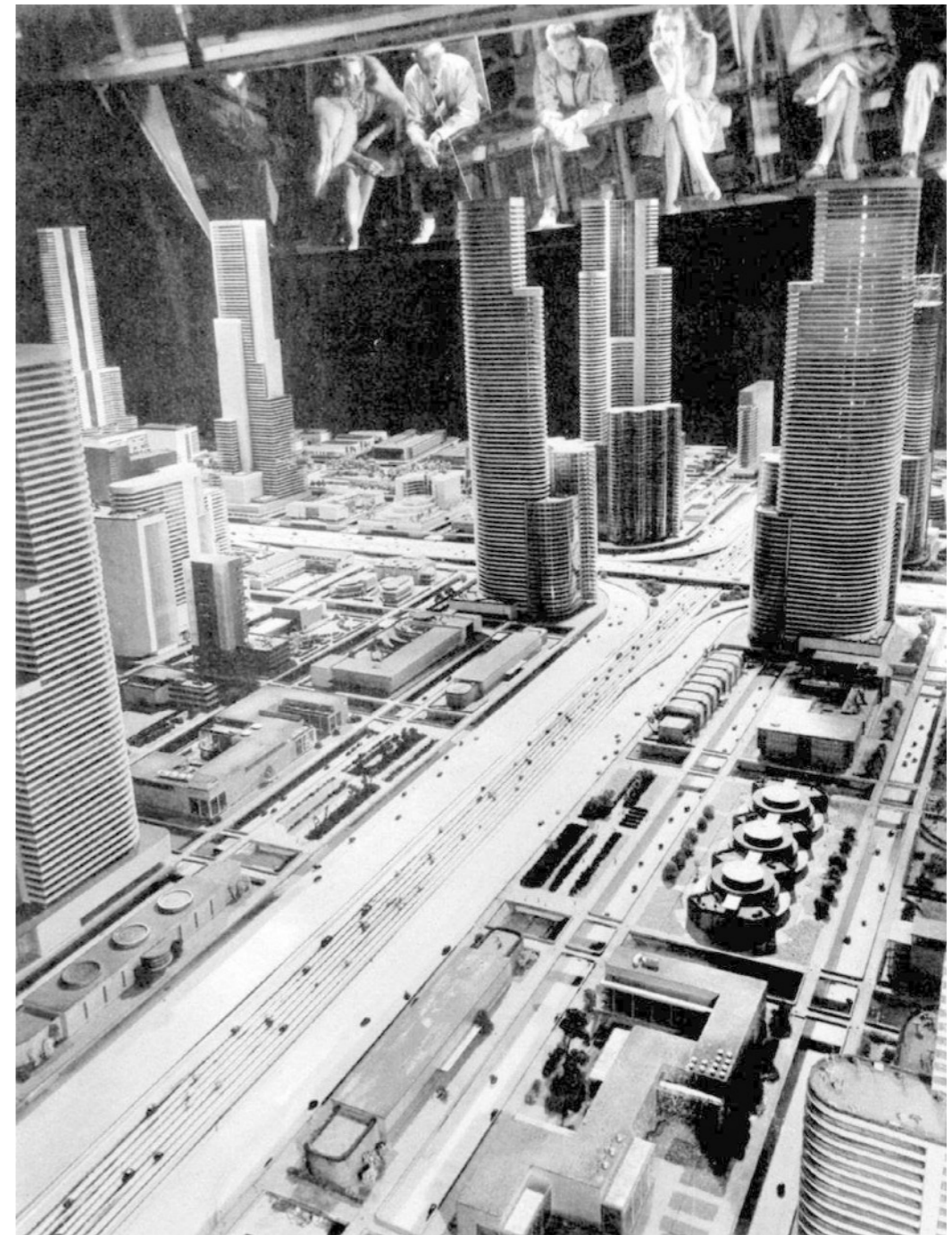
Coca-Cola Bottling Plant, Los Angeles (1939, Robert V. Derrah, National Register)



Pan-Pacific Auditorium, Los Angeles (1935, Welton & Becket, former National Register, demolished)



San Francisco Bathers' Building (1936, William A. Mooser II, National Register, now National Maritime Museum)



Futurama and the World of Tomorrow exhibit, designed by Norman Bel Geddes, 1939 World's Fair, New York

STREAMLINE MODERNE



San Pedro Municipal Ferry Building
1941, Derwood Lydell Irvin



Bellingham High School
1938, Floyd Naramore

STREAMLINE MODERNE BUILDINGS IN THE ROOSEVELT DISTRICT



Zenith Supplies
6300 Roosevelt Way NE
1930, extant



1512 NE 65th Street NE
formerly Funtiques
1910, demolished

STREAMLINE MODERNE BUILDINGS IN THE ROOSEVELT DISTRICT



North Distribution Substation/North
Substation Machine Shop
814 NE 75th Street NE, 1930



North Rectifier Substation
814 NE 75th Street NE, 1954

ART DECO COMMERCIAL BUILDINGS APPEARING ON SEATTLE HISTORIC SITES SURVEY



Peck & Hills Furniture Co./Baxley Dress
Manufacturing Co.
1000 Denny Way
1929, Albert C. Martin, extant



Metropolitan Press, 2603 Third Ave
1931, George Wellington Stoddard, extant

ART DECO COMMERCIAL BUILDINGS APPEARING ON SEATTLE HISTORIC SITES SURVEY



Green Lake Butcher Shop, now UBuildIt
7303 Woodlawn Ave, 1938



F.W. Woolworth Company Store, now Ross
301 Pike Street
1935, Harold B. Hillman, extant

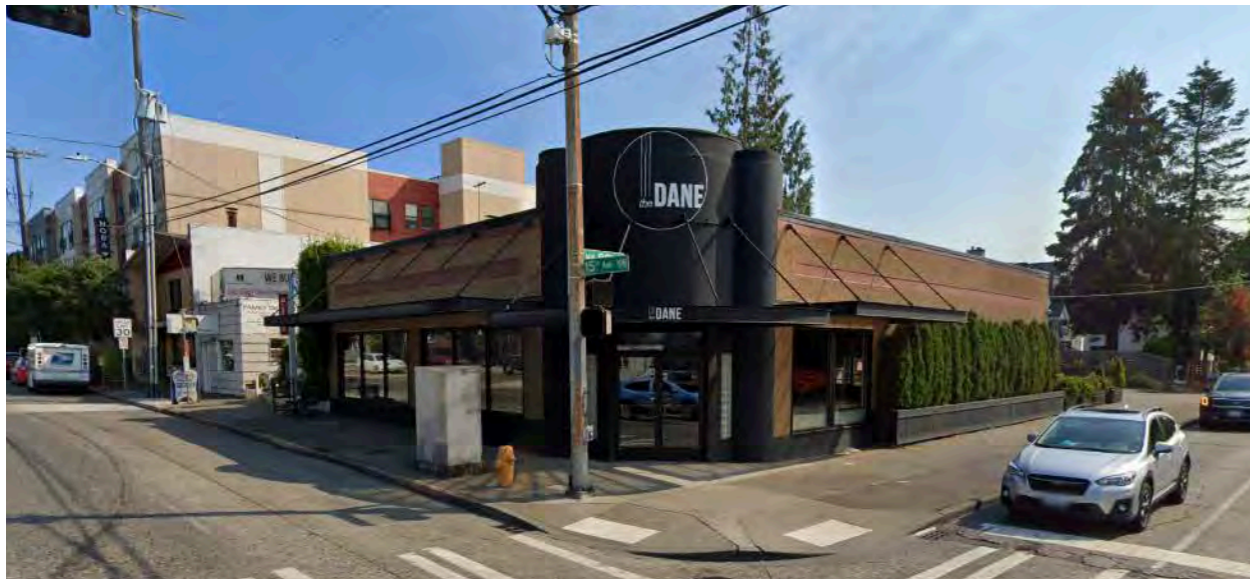


Paramount Pictures Exchange, now Ora Nightclub
2330 First Ave
1937, J. Lister Holmes, extant, altered

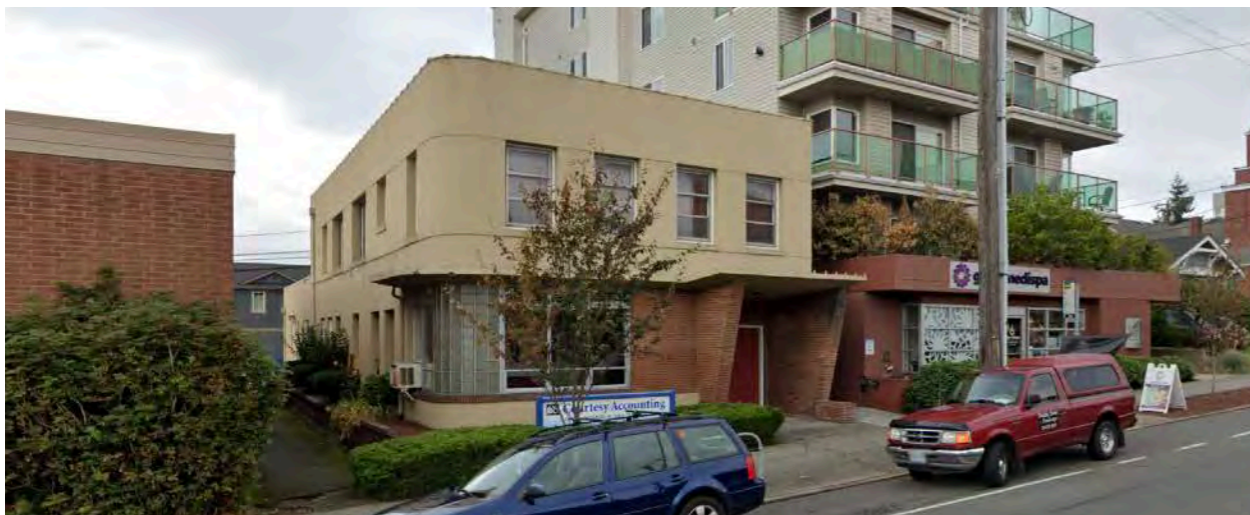
ART DECO COMMERCIAL BUILDINGS APPEARING ON SEATTLE HISTORIC SITES SURVEY



Western Pacific Chemical Company building,
1430-1436 Elliot Ave (1940, extant)



Daily Food Store (now the Dane cafe),
8000 15th Ave (1941)



Irwin Chiropractic Clinic (now Courtesy
Accounting), 4411 California Ave (1947,
Theodore Damm, extant)