

# Duwamish Valley Industrial Area Greening

10/5/22

Office of Sustainability & Environment



**City of Seattle**

# Overview

- Why Duwamish Valley?
  - Seattle's Duwamish Valley Program
- Why industrial areas?
  - Canopy cover goals and data
- Industrial area greening
  - 2022 progress
  - Future plans



# Why Duwamish Valley



# South Park & Georgetown Map



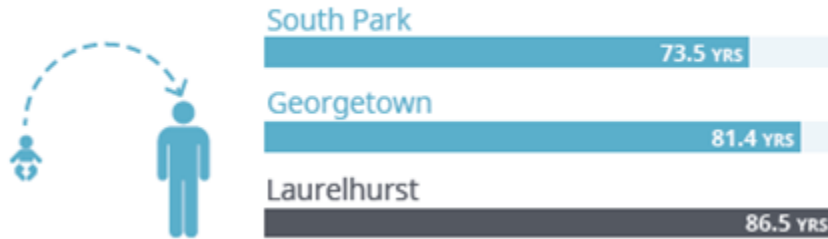
6 DUWAMISH VALLEY PROGRAM

DUWAMISH VALLEY PROGRAM 7

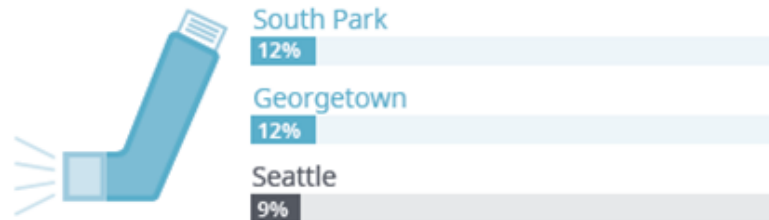


# Environmental Injustice

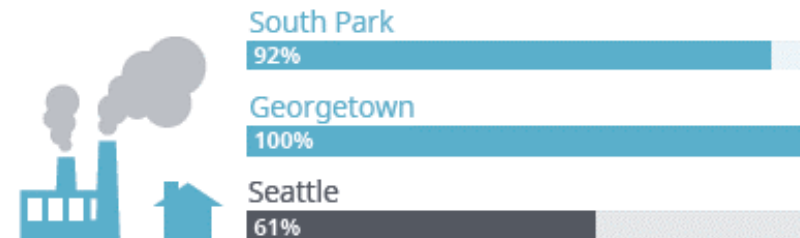
## Life Expectancy



## Asthma Prevalence



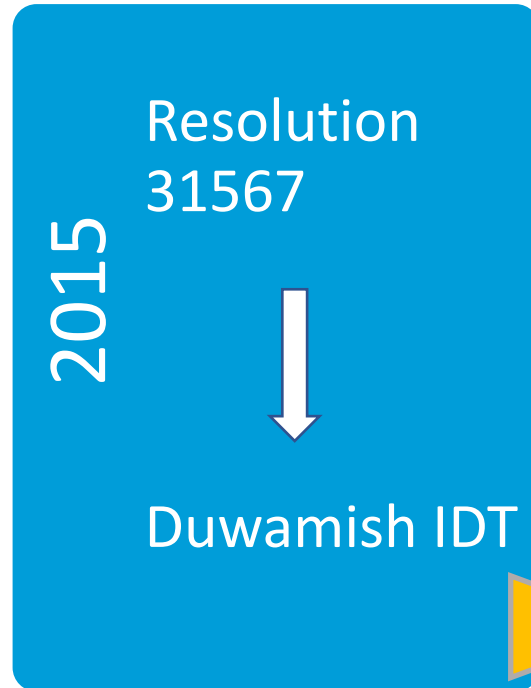
## Living Near Contaminated Site, Superfund Site, or Freight Corridor



# City of Seattle Context

## Decades of community advocacy!

- Superfund
- CHIA
- HIA



# Duwamish Valley Program



**18 City departments** align and coordinate City efforts to advance environmental justice and equitable development.

# Racial Equity Outcomes



**Healthy  
Communities**



**Thriving  
Neighborhoods**



**Prosperity in  
Place**



**Economic  
Opportunity**



**Equitable Access  
to Resources**

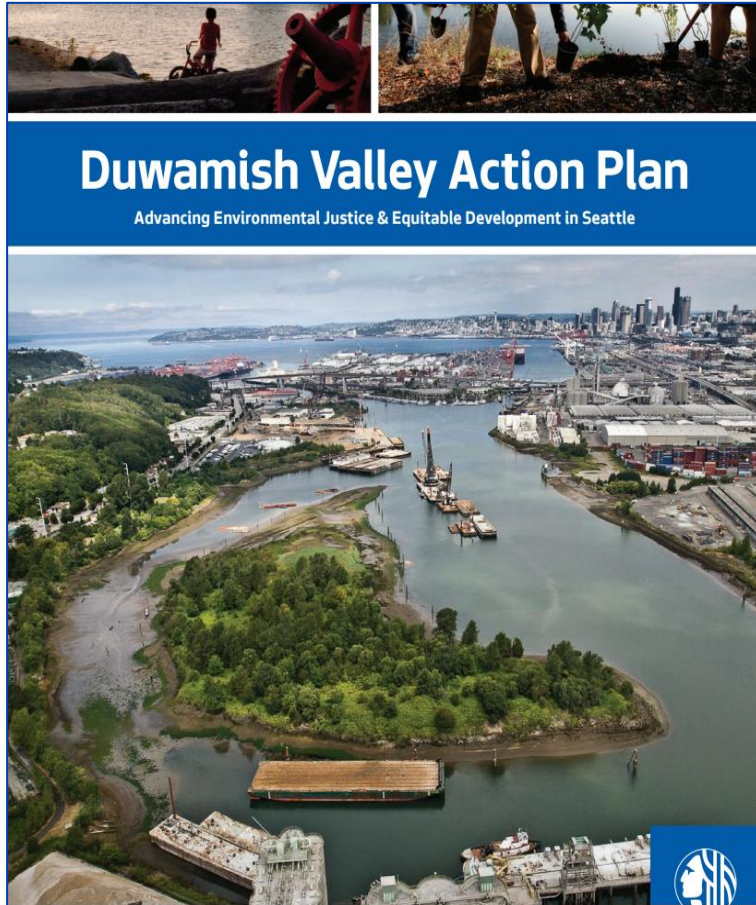


**Community  
Leadership**





# Duwamish Valley Action Plan



**Bold and ambitious goals related to Anti-Displacement, Workforce Development, Climate Change, Parks & Open Space, and Health.**

# Long-Term Strategies



*To be developed by 2023.*

# 2022 Duwamish Valley Investments

- **\$1.75M for 8<sup>th</sup> Ave. S & Waterfront Street-End Park**
- **\$2.3M for building, energy, and community resilience for community spaces in Georgetown.**
  - Final scopes & budget will be based on community engagement, including input from the Green New Deal Oversight Board to ensure continued alignment with Seattle's Green New Deal.
- **\$1M to fund incentives to convert polluting, diesel-powered heavy-duty vehicles** to clean electric power for operations in the Duwamish Valley.
- **\$850K to support businesses in South Park and Georgetown**, clean energy workforce development, green industrial lands, and to advance the Industrial & Maritime Strategy.
  - \$275K for support for businesses.
  - \$275K to advance clean energy workforce development.
  - \$300K for greening industrial lands.
- **\$500K for youth leadership development and capacity building.**



# Why Industrial Areas



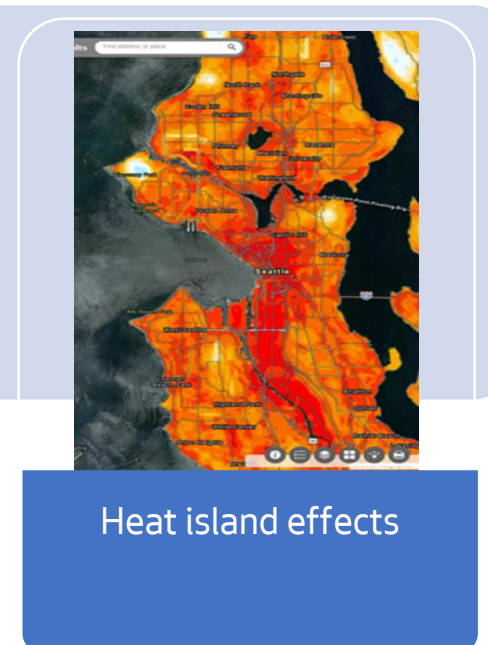
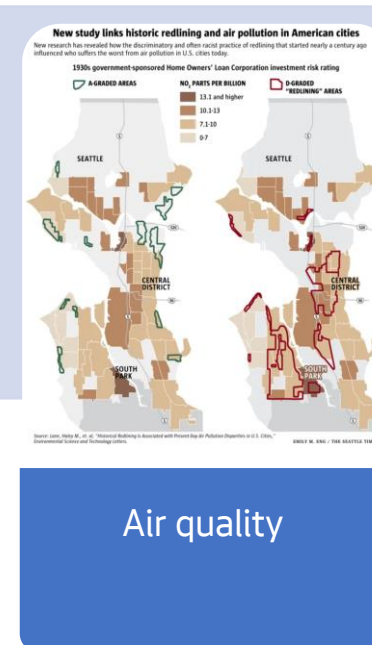
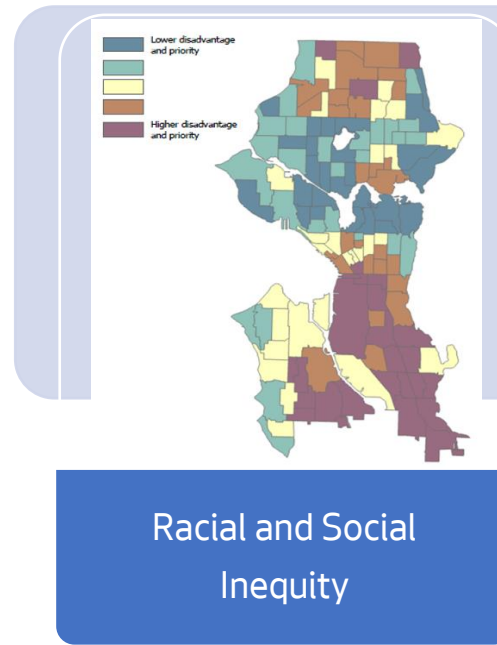
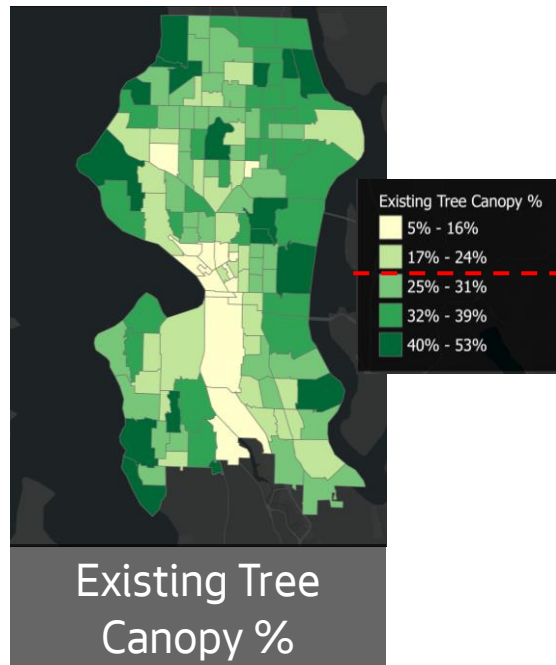
# Canopy Cover Assessment

## Progress achieving targets by Management Unit

Management Unit	2016 canopy cover	2037 canopy goal (set in 2007)	Over/Under goal
Single-Family Residential	32%	33%	-1
Multi-family Residential	23%	20%	+3
Commercial/Mixed-use	14%	15%	-1
Downtown	10%	12%	-2
Industrial	6%	10%	-4
Institutional	25%	20%	+5
Developed Parks	34%	25%	+9
Parks' Natural Areas	89%	80%	+9
City total	28%	30%	-2
Right-of-way (runs through all other MUs)	23%	24%	-1

# Canopy Equity and Resilience

- Canopy cover inequities exist
- This has impacts – health disparities, poor air quality, heat island effects
- Need citywide planning to address



# Duwamish Valley Investment

- High-impact greening projects
- Industrial properties adjacent to residential
- Engaging community-based organizations
- Outreach to industrial property owners and managers
- Diversity of project types
  - Tree planting
  - Swales
  - Green walls/green screens



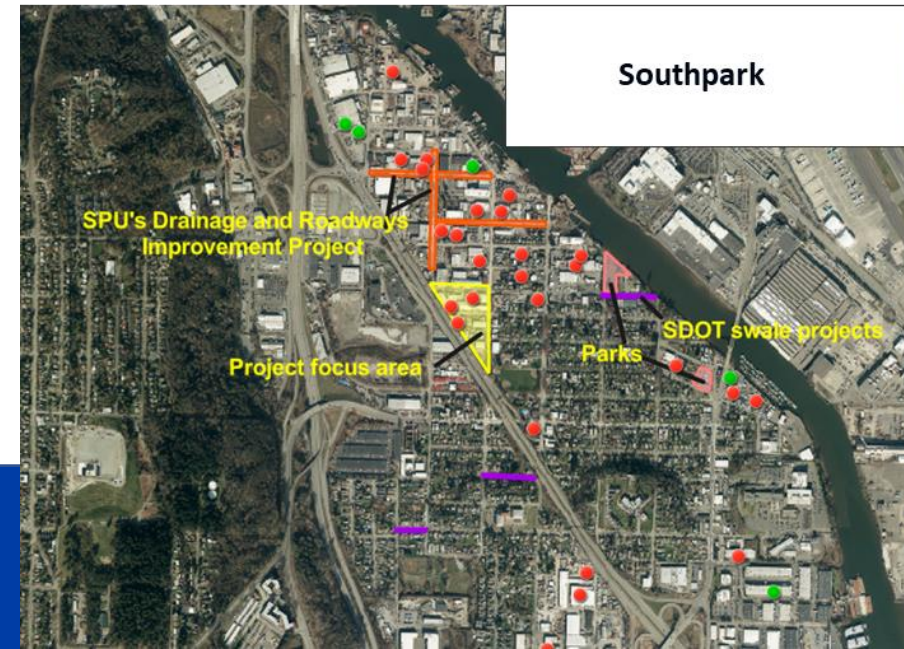
# Industrial Area Greening





# Project Process

- Work with community groups and internal agency staff
- Confirm areas of focus
  - Adjacent to residential
  - Buffers for transportation corridors
- Outreach to industrial property owners/managers
- Identify project property sites



# Project Sites - 2022 Construction

- Georgetown Trailer Park Mall - Phase 1
  - Expand on initial greening efforts
  - Install green wall structure



Georgetown



City of Seattle

# Project Sites - 2022 Construction

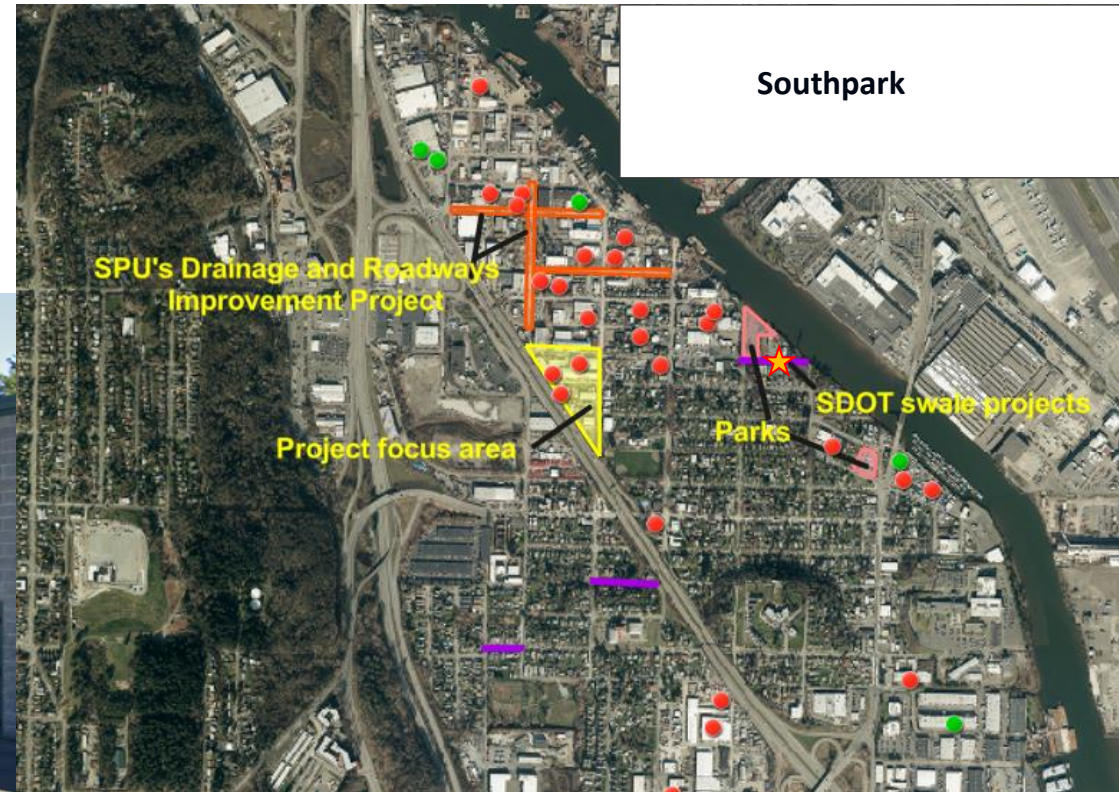
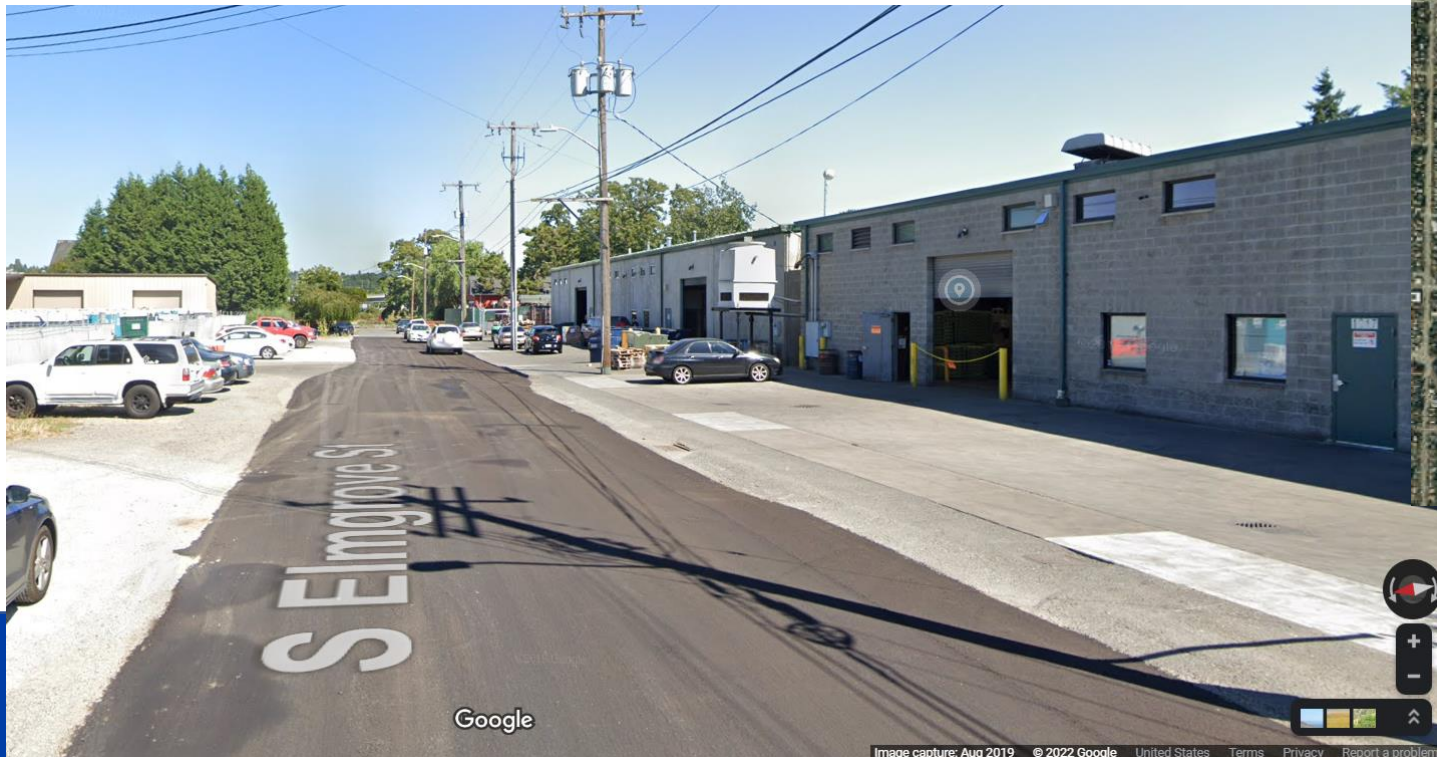
- 6<sup>th</sup> Ave South (Seattle Design Center) - Georgetown
  - In coordination with other SDOT work
  - Additional depaving, planting



City of Seattle

# Project Sites - 2022 Construction

- Elmgrove and 11<sup>th</sup> - South Park
  - In coordination with other SDOT work
  - Additional depaving, planting



# Project Sites - 2023 Construction

- Donburi Station
- Findlay and 8<sup>th</sup> Ave street end
- 4<sup>th</sup> Ave (Seattle Design Center)



# Future Plans

- Continued funding included in the Mayor's proposed budget
- Build out additional projects from outreach and community work in Duwamish Valley
- Initiate work with community groups and property outreach in other neighborhoods



# Questions?

Patti Bakker  
patricia.bakker@seattle.gov  
(206) 684-3194

