

Seattle City Light's Vegetation Management Unit



Mission:

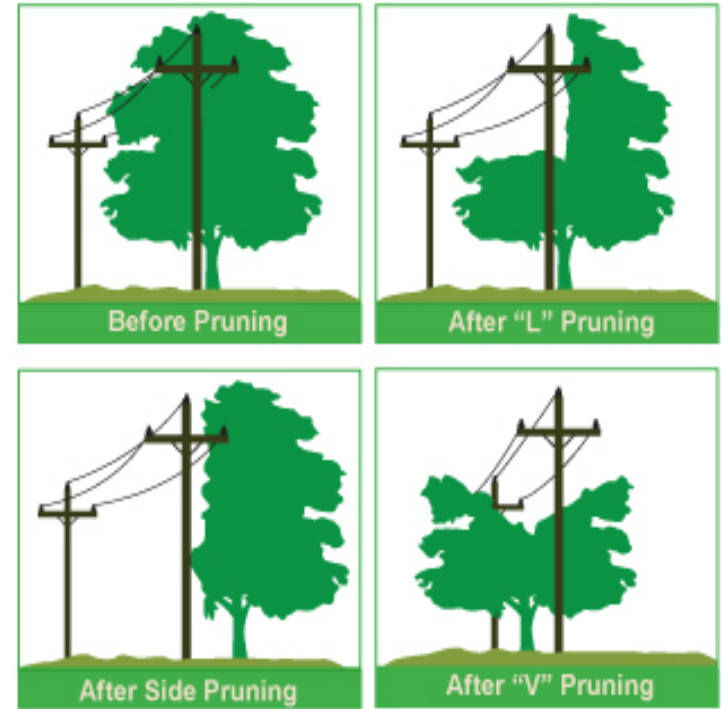
Vegetation Management is committed to ensuring safe and reliable power delivery through the comprehensive and environmentally responsible management of the vegetation our lines and infrastructure impact.

Budget #s

- Utilizing 3 Tree Trimming Contractors
- About \$5,000,000 for Distribution trimming
- About \$1,000,000 for Transmission

Distribution Tree Trimming Program

- Maintains and monitors over 300,000 trees with grow/fall in potential
- Trims along 1,770 miles of overhead lines in Seattle and parts of Burien, Lake Forest Park, Normandy Park, Renton, SeaTac, Shoreline, Tukwila and Unincorporated King County.



Directional Pruning Methods



Seattle City Light

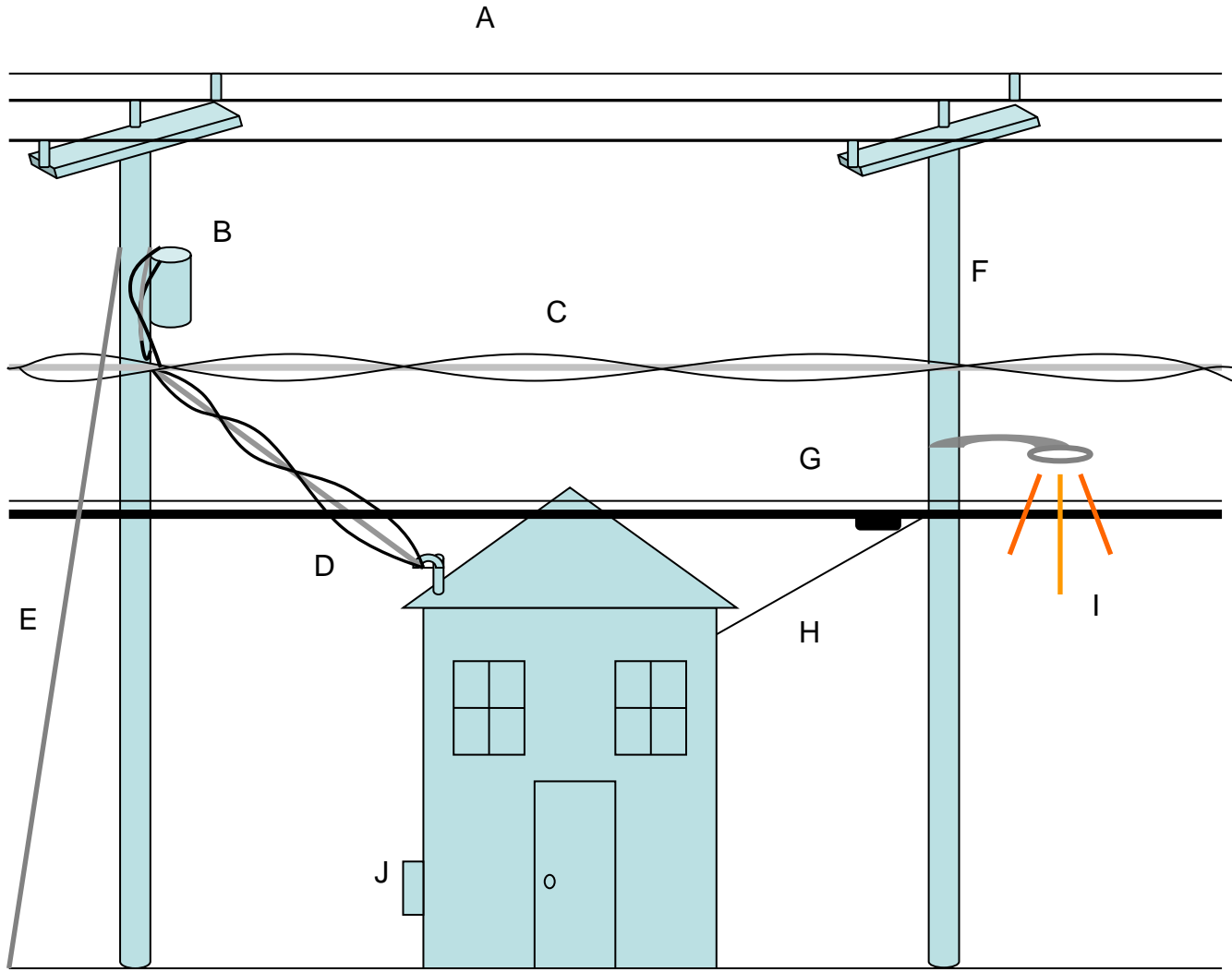
Dist Tree Trim Methodology

- Feeder-based
- 4 yr. cycle for entire service area



- All regular maintenance tree trimming done by contractor
- 10' min. clearance off primary and transformers as per WA WAC 296-24-960, 3-5' min. off secondaries and neutrals.

- Directional (“natural” or “drop-crotch”) Pruning – an increased focus on proper arboriculture yields “deeper” cuts 1st time around. No “rounding over” or “shaping”.
- All contractors are Journeyman Tree Trimmers or apprentices. All work audited by ISA Certified Arborists
- Better to remove and replant than top...but:
 - 64% of system workload is “crown reduction”
 - Industry standard is approx. 70% side trim



Typical
Distribution
System
Facilities



Seattle City Light

Transmission Right-of-Way Maintenance Program

- Manages vegetation along 657 miles of transmission right-of-way through King, Snohomish, Skagit, Whatcom and Pend Oreille counties.



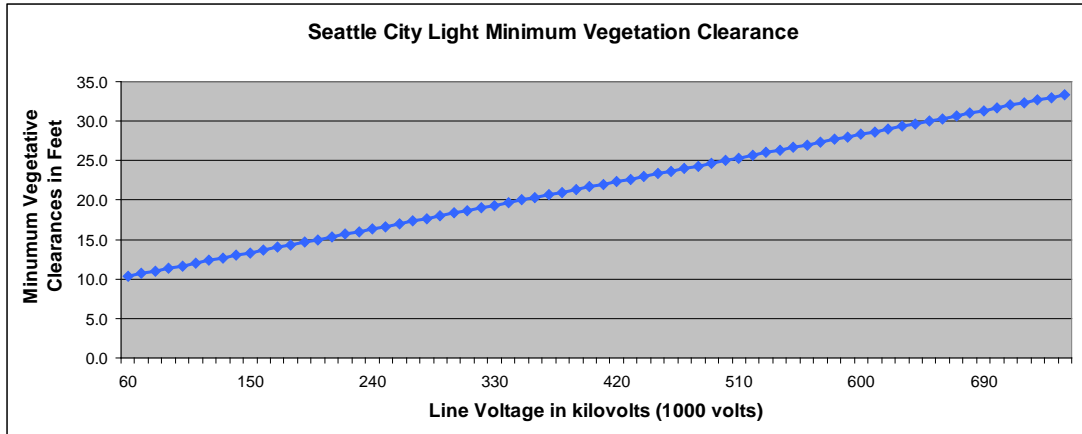
Trans Cont'd

- - Work Managed on 4 yr. cycle informed by annual inspections.
- - Subject to Federal regulation (NERC and FERC).

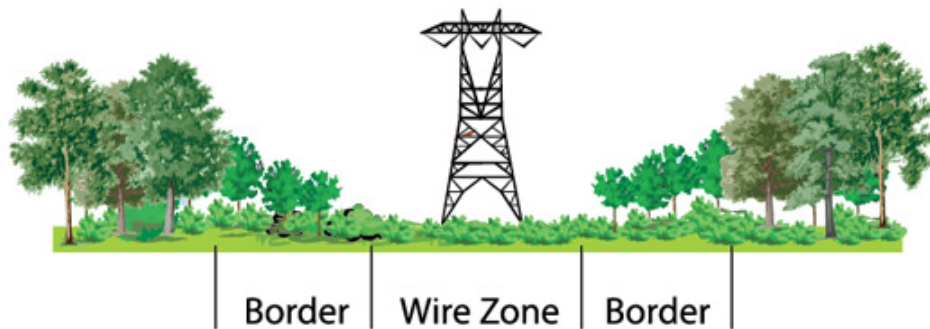


Trans Cont'd

- Min Clearances determined by WA WAC



- Follow Wire-Zone – Border-Zone BMPs



Importance of Regular Cycle Maintenance

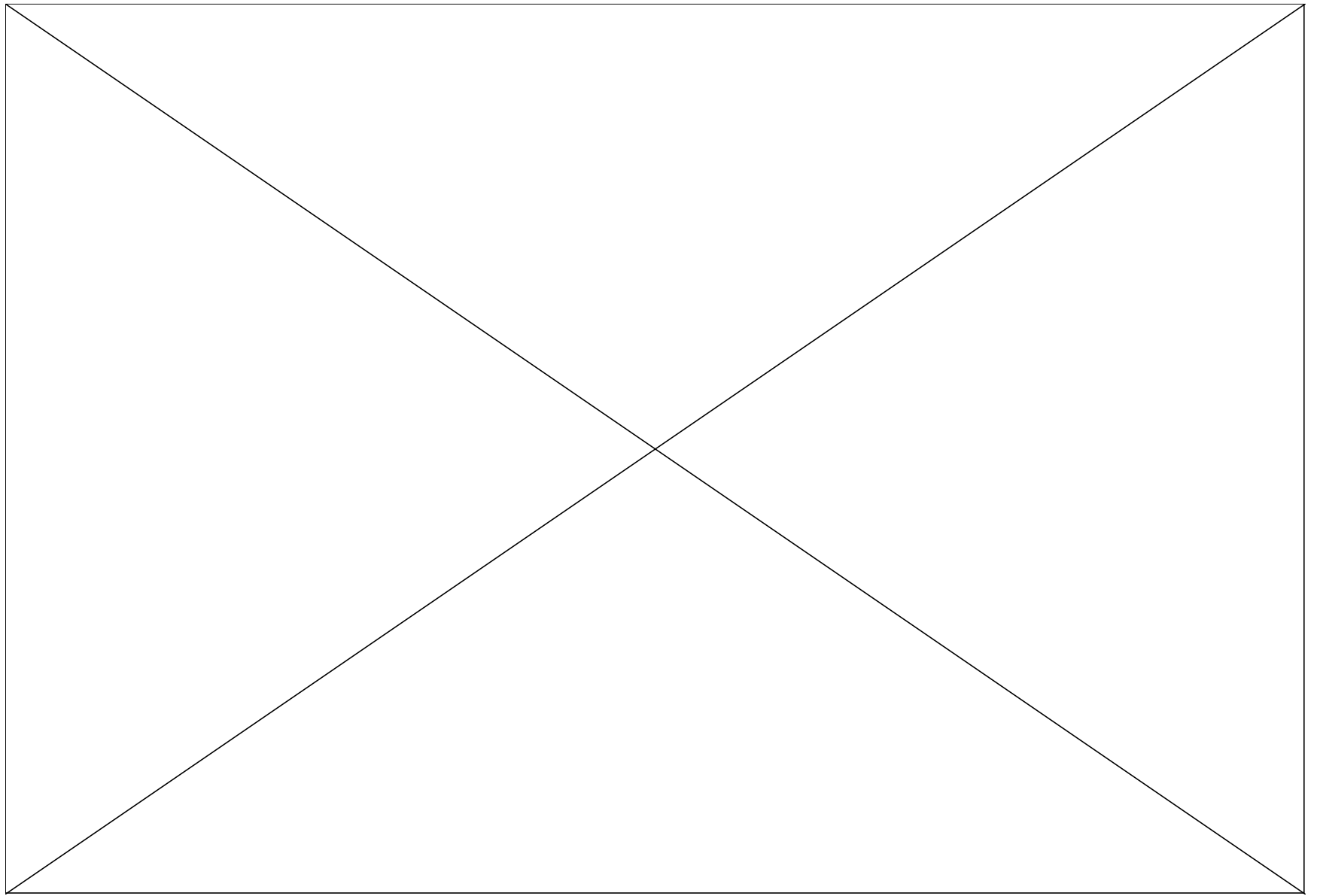
- “Deferral of line clearance beyond an optimal cycle can result in increased costs...of 23% - 70% per unit” (2009 ACRT assessment).
- 71% of (distribution) trees are “medium” or “fast” growing species
- In 2006 after several years of not funding Veg. Mgmt we had over 875 outages due to vegetation, mostly trees. Since then the average has been about 182 outages/year.

Urban Tree Replacement Program

- “Right Tree Right Place” information
- Partners with Trees for Neighborhoods
- Partners with SDOT on community and other large-scale planting/establishment projects
- Partners with Washington State Nursery and Landscape Association (WSNLA) to provide Urban Landscape Tree Replacement Certificates
- SCL to host Arbor Day Celebration 2012 w/ SDOT, SPU, Parks, & OSE

Where We're Going

- Treeline USA - 2013
- Interdepartmental Coordination
- Veg Mgmt Software – 2013(?)
- Tree Growth Regulators (with SDOT and Parks)
- ROW Steward Program in dev't (UAA, EPRI, TNC, Wildlife Habitat Council, U.S. EPA)



Seattle City Light