





Urban Forest = Single Trees

Specimen trees in developed areas

- Non-native species
- Mature to senescent
- Limited growing spaces
- Heavy human use impacts
- Impact infrastructure
- “Green Infrastructure”



Urban Forest = Stands

Closed canopy forested areas

- Unmanaged for 20-40 years
- Primarily deciduous
- Limited understory diversity

Urban Forestry Management

- Tree Maintenance
- Reforestation Program
- Trails Program
- Natural Areas Maintenance
- Policies and Practices

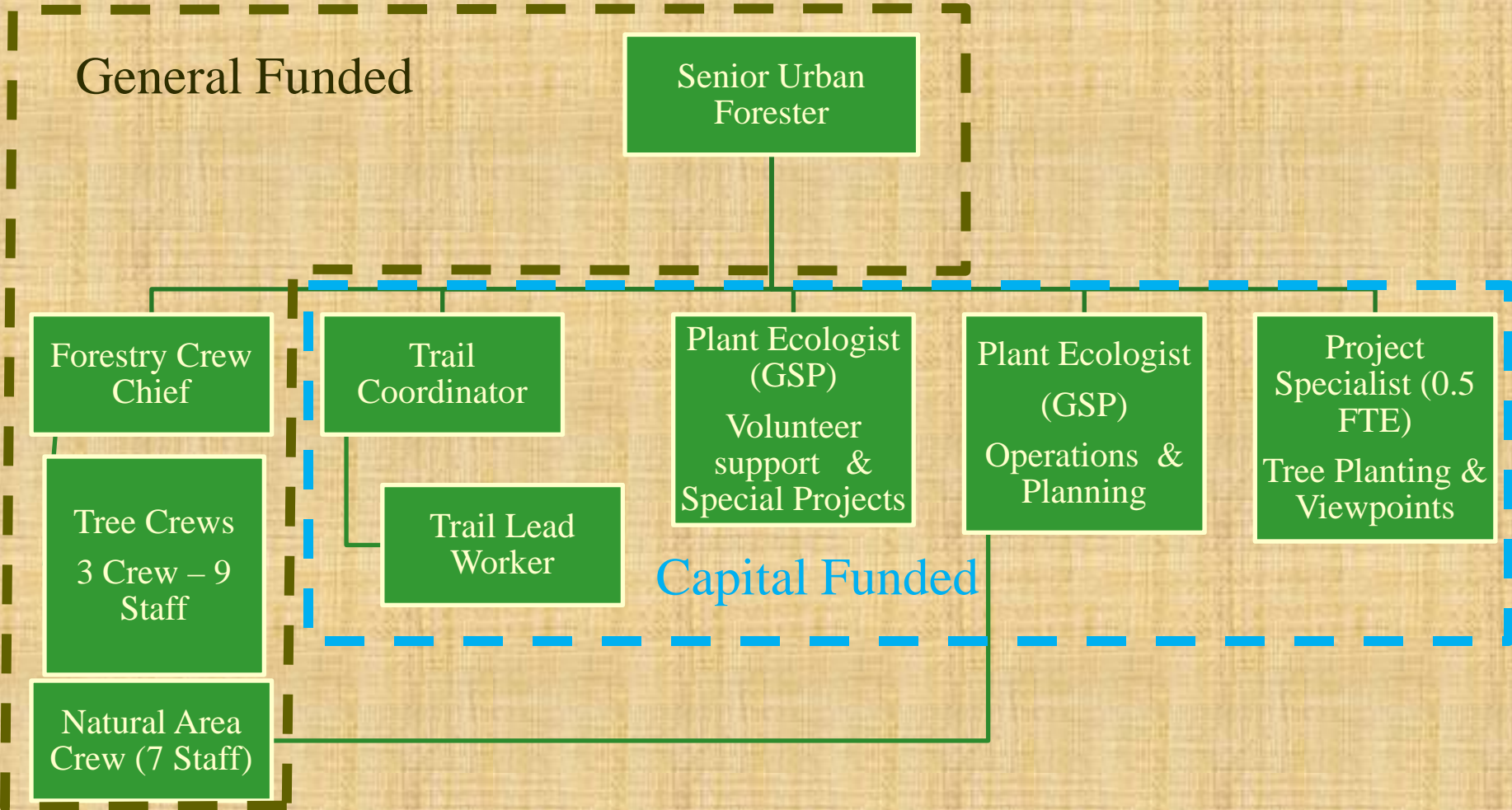
.....will work with all citizens to be good stewards of our environment.....





Urban Forestry Program

City of Seattle Department of Parks and Recreation





Department Policy & Procedure

City of Seattle

Subject:

**TREE MANAGEMENT, MAINTENANCE,
PRUNING AND/OR REMOVAL**

Number 060-P 5.6.1

Effective May 18, 2001

Supersedes 5.6.1 (3/14/75);
5.6.2 (4/22/75); and 5.6.3 (5/1/86)

Approved:

Department: Parks and
Recreation

Page 1 of 18

1.0 PURPOSE STATEMENT

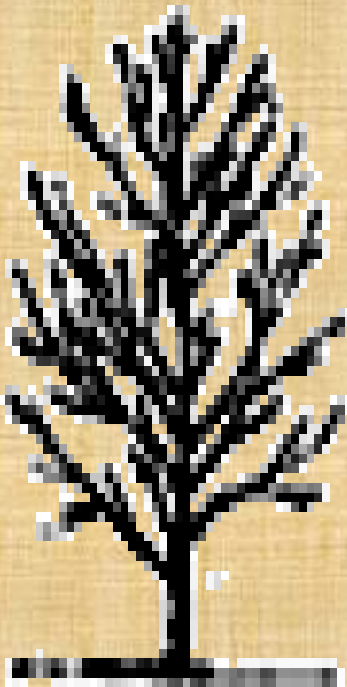
To maintain, preserve and enhance the urban forest within parks. To increase the overall tree canopy, tree health and tree longevity within parks and to ensure that parks trees are managed in a manner that is consistent with other departmental and municipal policies.

Appropriate Pruning

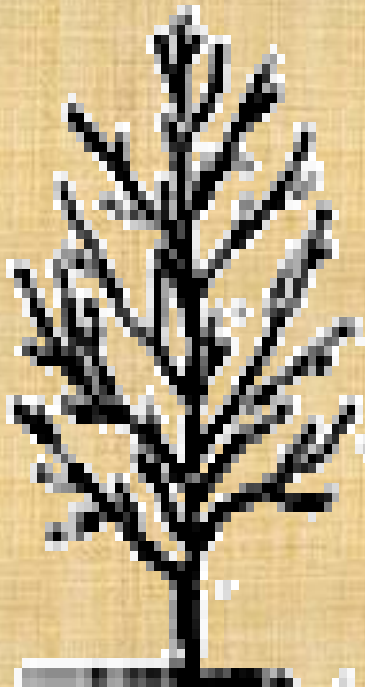
Before



**Crown
Cleaning**



**Crown
Thinning**



**Crown
Raising**

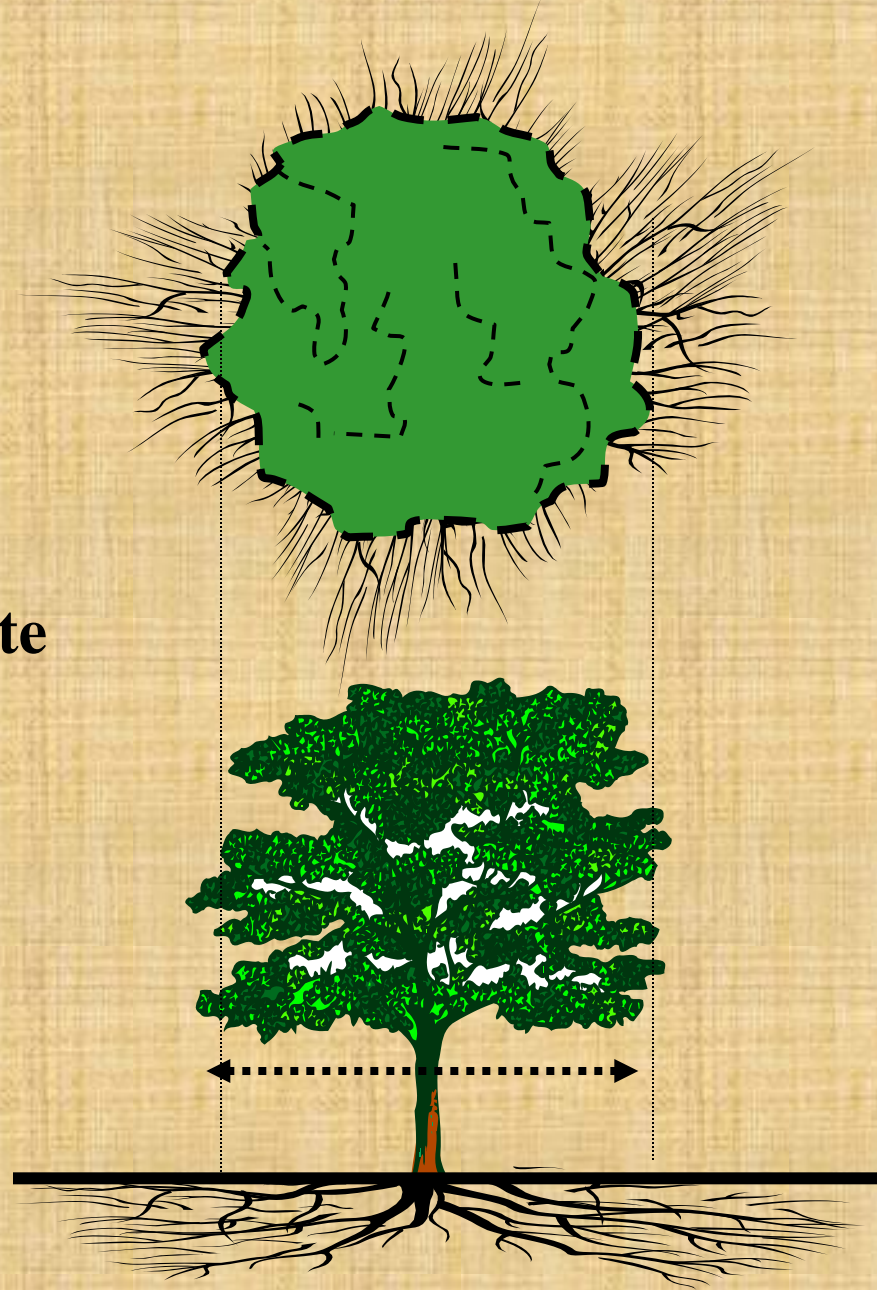


**Crown
Reduction**



Root Protection

- Mechanical injury to roots, trunks or branches
- Compaction of soil
- Changes to existing grade which may expose or suffocate roots



Hazard Tree Mitigation

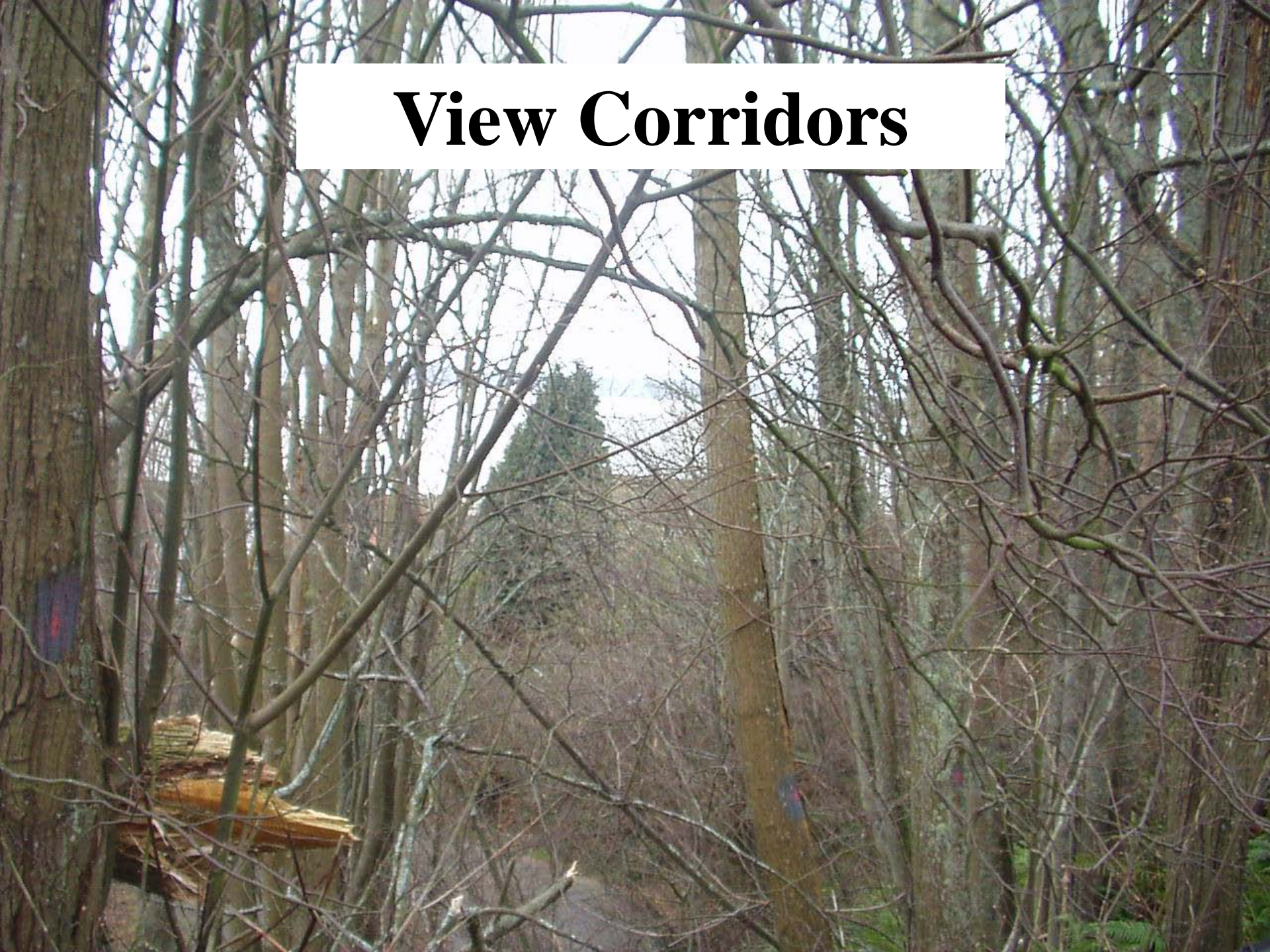




Public Viewpoints

- 
- 24 designated public viewpoints
 - Maintaining views by cutting or pruning trees.

View Corridors





Selective Removal & Thinning

Slope Protection

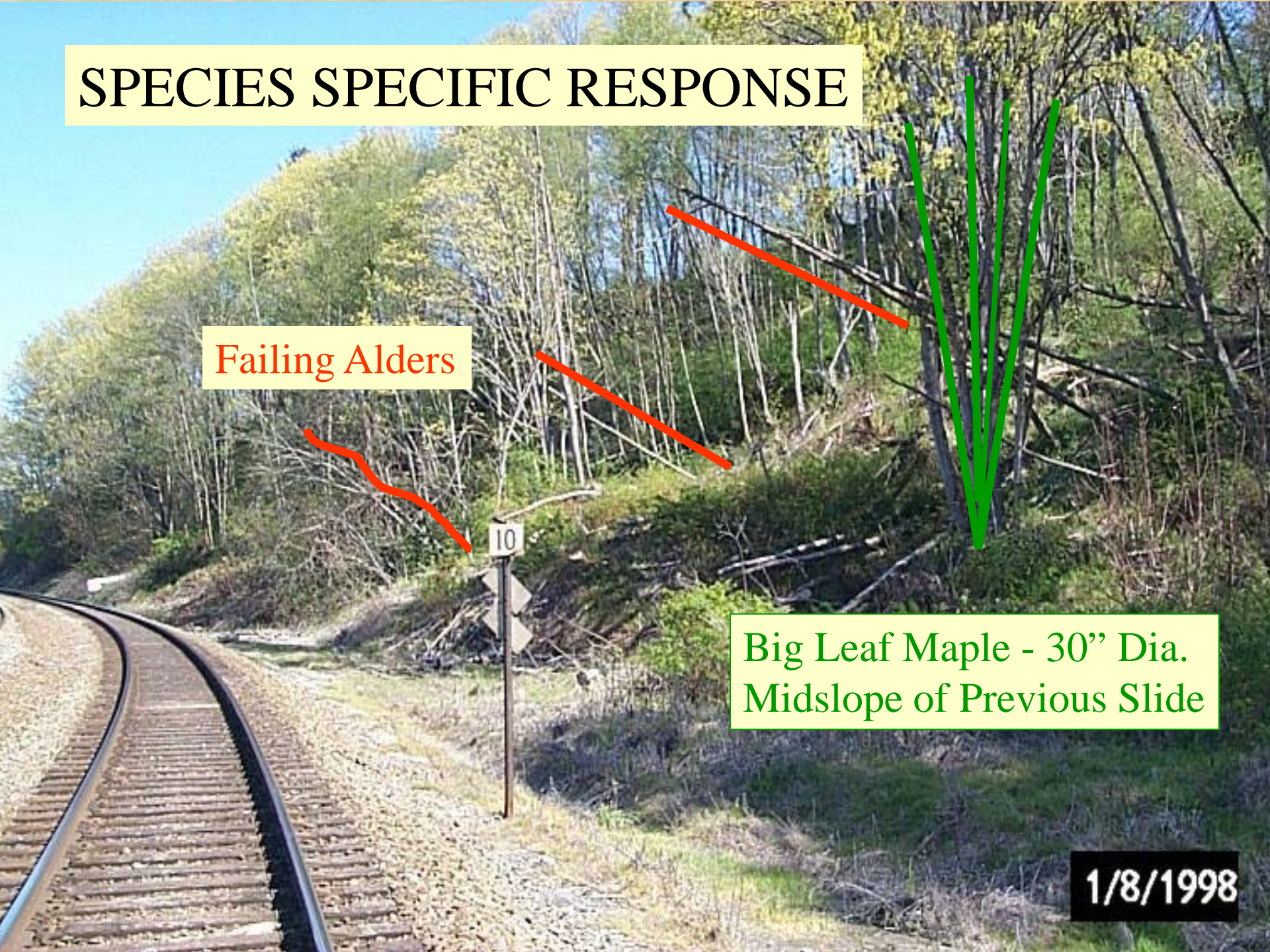


SPECIES SPECIFIC RESPONSE

Failing Alders

Big Leaf Maple - 30" Dia.
Midslope of Previous Slide

1/8/1998





GREEN SEATTLE
P A R T N E R S H I P

private partnership are changing
urban forest management of a
region

**Mark Mead, Senior Urban Forester, Seattle
Parks and Recreation**

Impacts of Urbanization



Disturbance



Invasive Plants

Green Seattle Partnership (GSP)

Accomplishments to date

387 total acres in restoration

Adding 100 new acres in 2009

250,000 volunteer hours

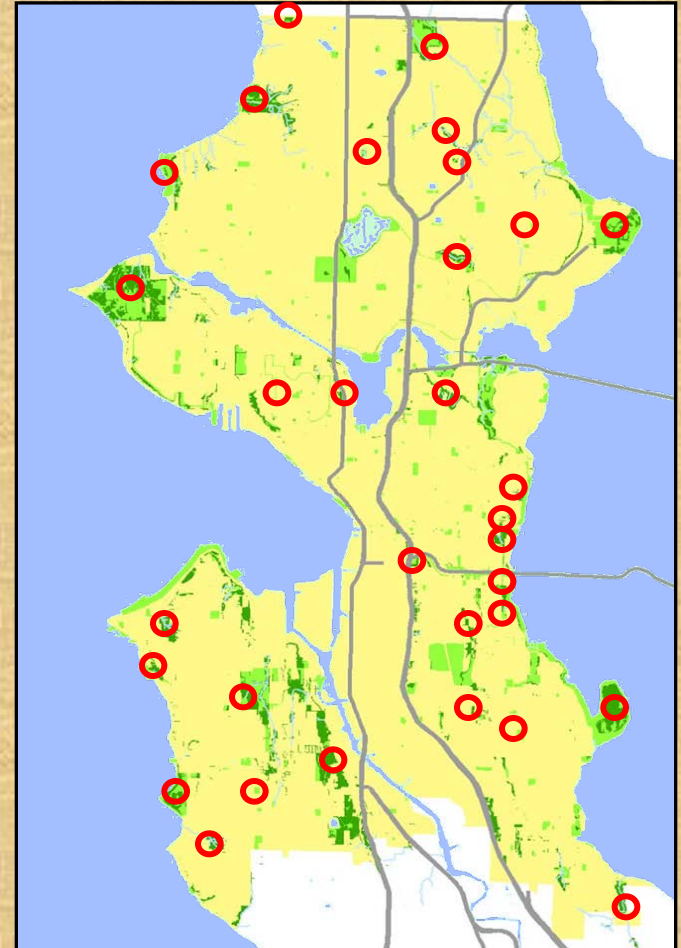
60+ Forest Stewards

48,000+ trees planted

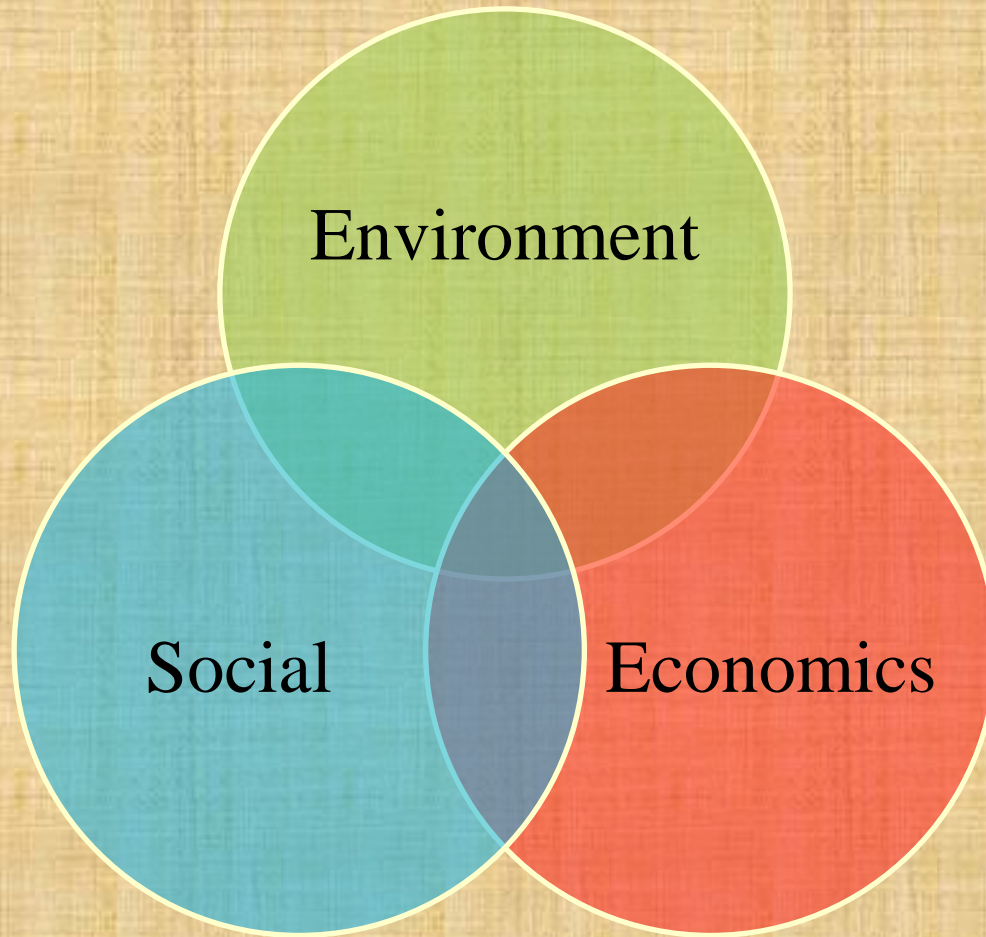
\$5.1 Mill. Parks, \$2.8 Mill. Outside

**Program adopted by four cities in the
region**

50+ GSP Work Areas



Sustainability Concepts



The Urban Forest Sustainability Diversity Model

Diversity Scale

Less



More

Ecosystem Knowledge –
A healthy and biologically diverse forest

Less



More

Economics –
Well managed and diverse funding sources

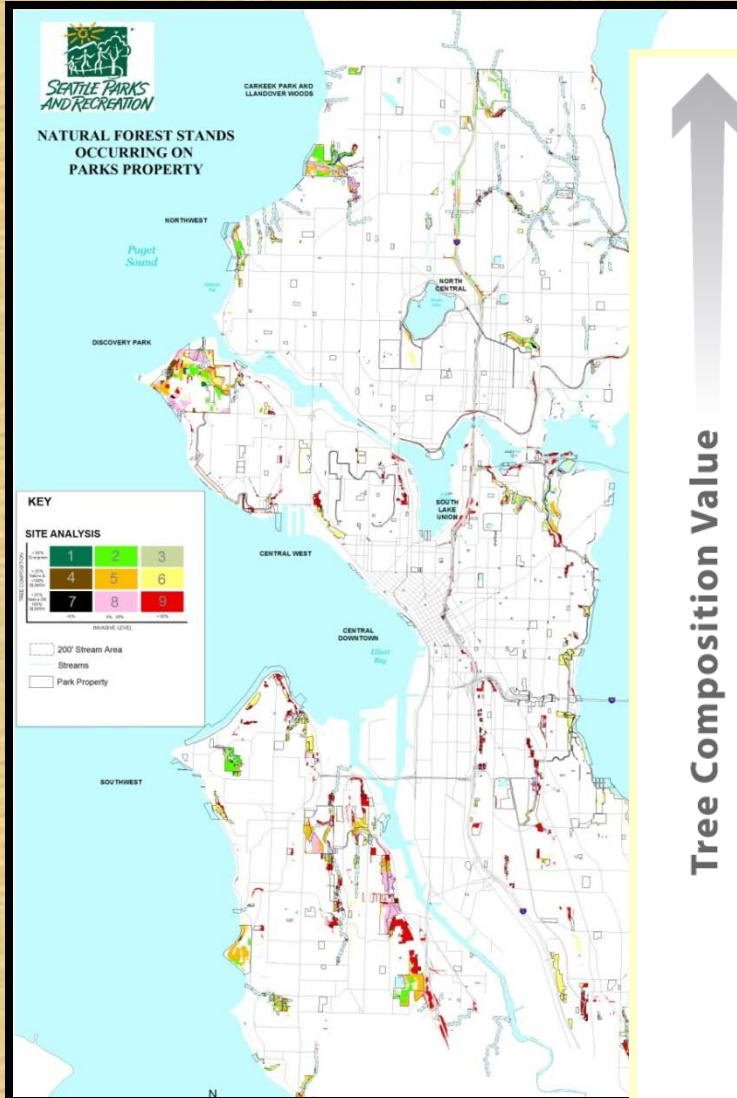
Less



More

Community Support –
Across all levels and communities

Mapping Leads To A New “Old” Scheme



Tree Composition Value

HIGH
 > 25% Native Tree Canopy Cover,
 >50% Canopy Cover is Evergreen

MEDIUM
 > 25% Native Tree Canopy Cover,
 <50% Canopy Cover is Evergreen

LOW
 < 25% Native Tree Canopy Cover

1 Monitoring & Stewardship (41 ac)	2 Invasive Plant Reduction (330 ac)	3 Major Invasive Plant Reduction (95 ac)
4 Planting (39 ac)	5 Invasive Plant Reduction & Planting (442 ac)	6 Major Invasive Plant Reduction & Planting (608 ac)
7 Evaluation & Major Planting (44 ac)	8 Invasive Plant Reduction & Major Planting (380 ac)	9 Major Invasive Plant Reduction & Major Planting (633 ac)

LOW
 (Less than 5% invasive cover)

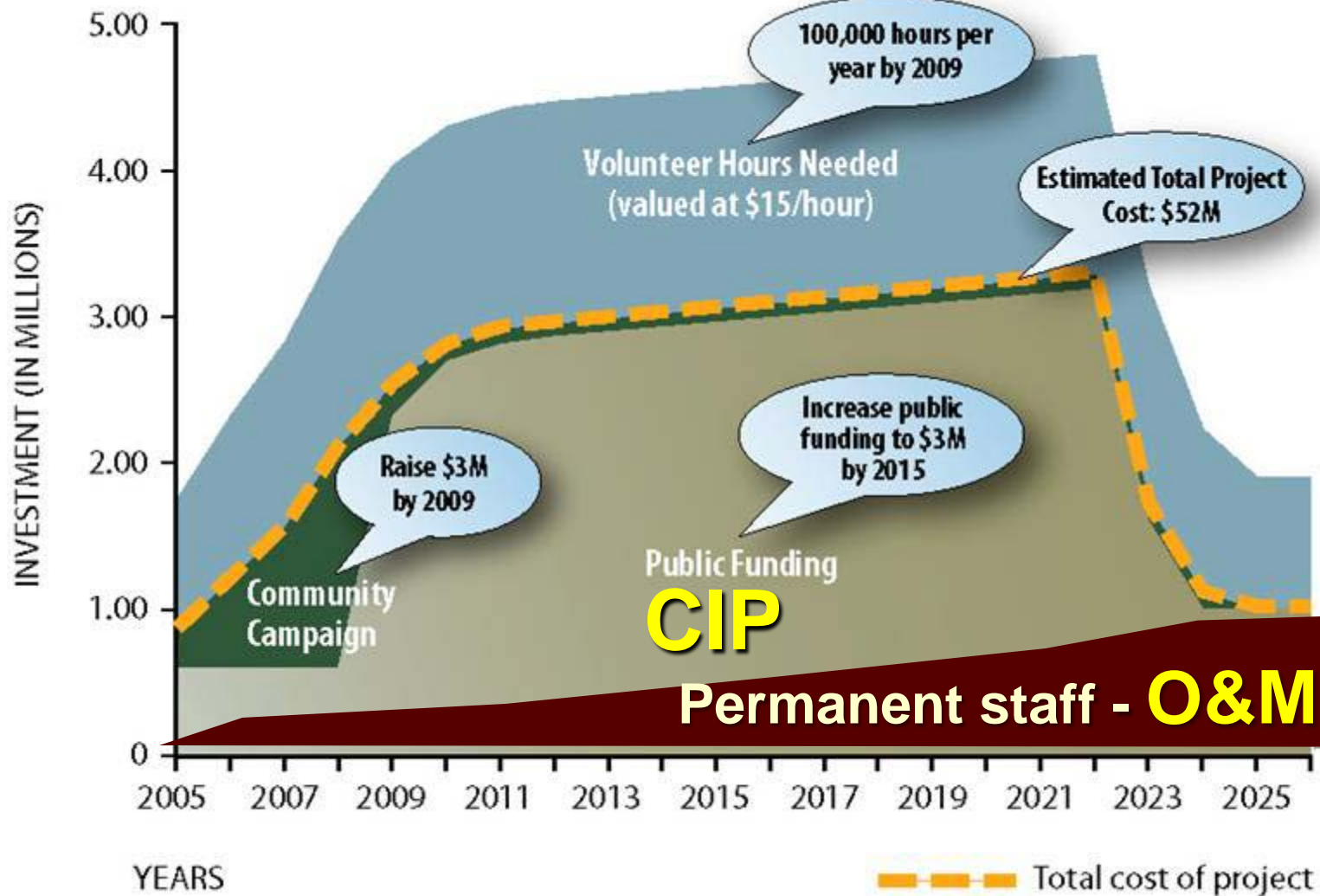
MEDIUM
 (5%-50% invasive cover)

HIGH
 (More than 50% invasive cover)

Threat



Funding Structure





One park: building community, planting trees



Green Seattle Partnership: 2500 acres in 20 years



Green City Partnerships: 5 cities, community-based



Pacific Northwest: We are blessed

Outcomes - via Forest Sustainability Model

Management Infrastructure

- **Funding needs quantified**
- **Crew compliment & skills identified**
- **Internal coordination improved**

Framework of Community Support

- **Active citizens engaged and supported**
- **Training improved**
- **Outreach and education tools developed**

The Forest Resource

- **Forest value and threat assessed**
- **“Best” potential forest identified**
- **Work practices improved and perfected**