



Morse Lake Pump Plant Project Status Briefing

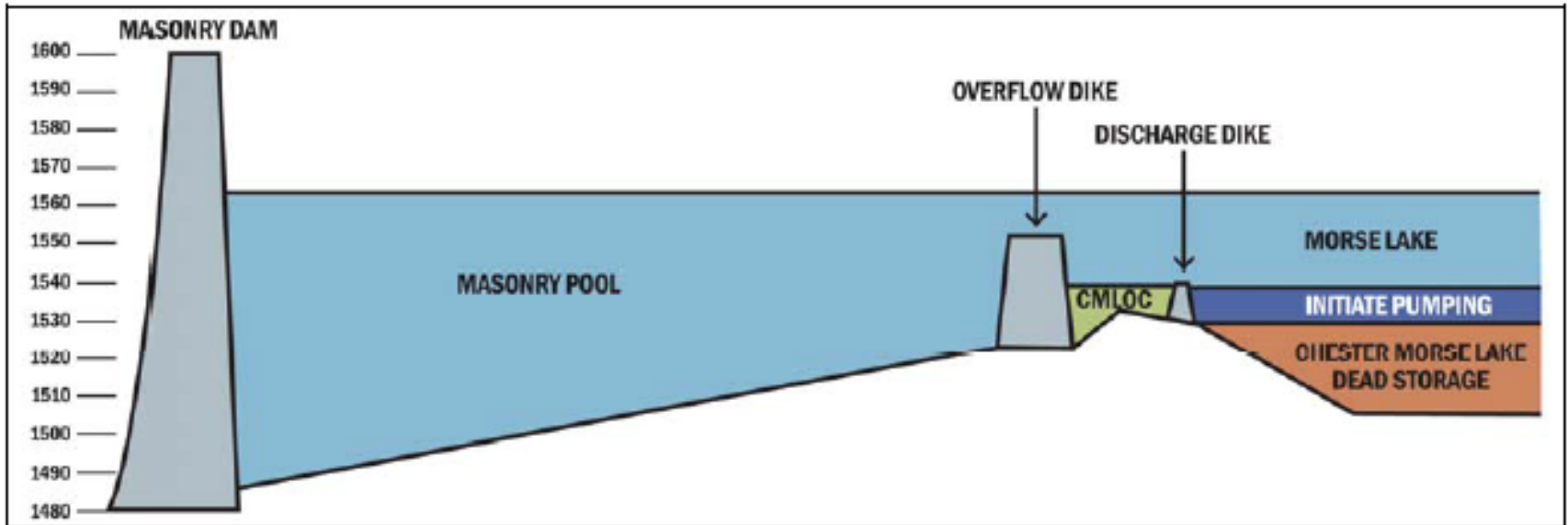
October 6, 2016

Water Operating Board Meeting

Outline

- Project Background
- Project Status / Completion Schedule
- Construction Progress
- Total Cost Projection

Background

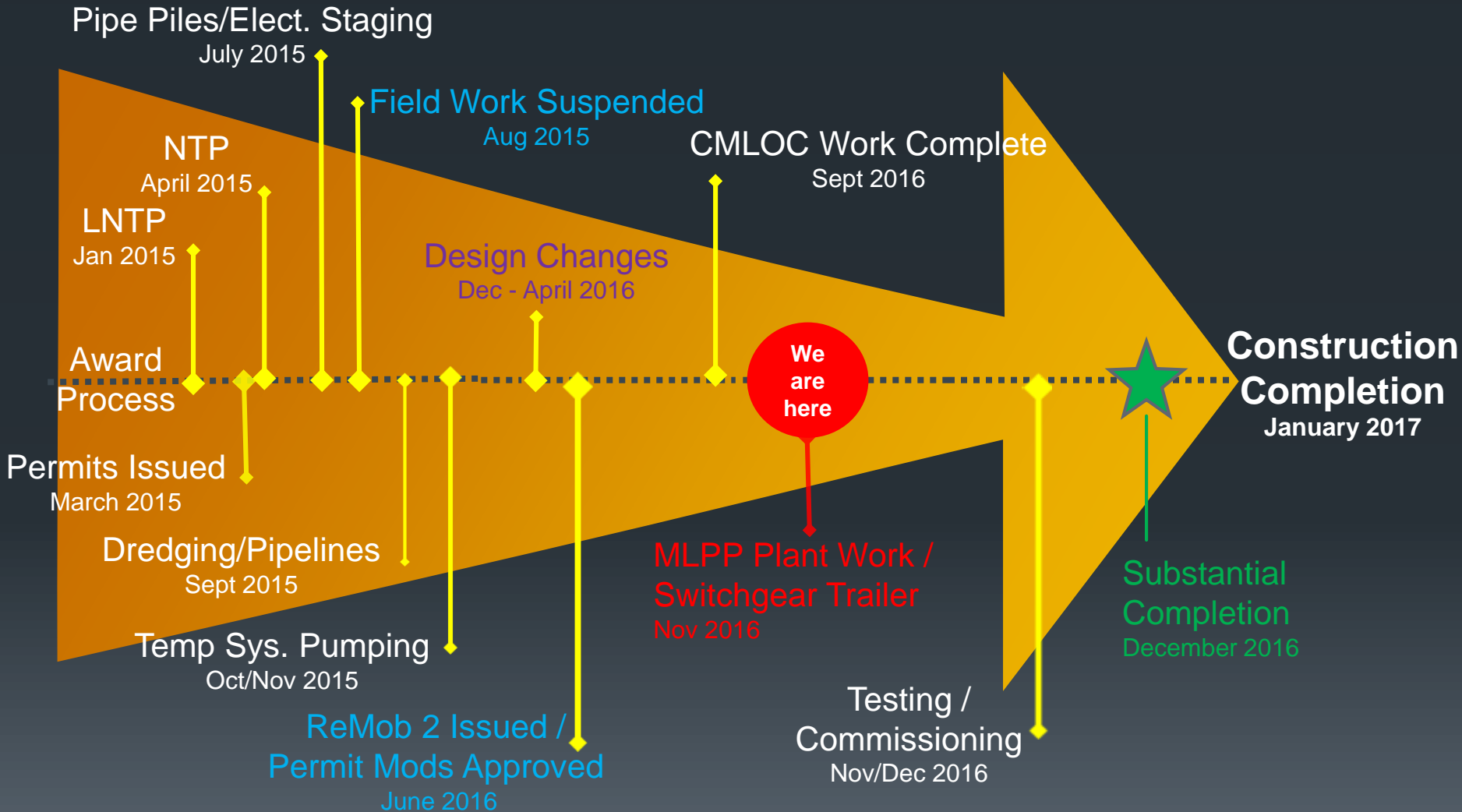


Main Project Components

- Replace 240 MG Floating Pump Plant
- Power/Cabling System
- Outlet Channel Conveyance
- Discharge Dike Improvements

Project Construction Status - Original Schedule

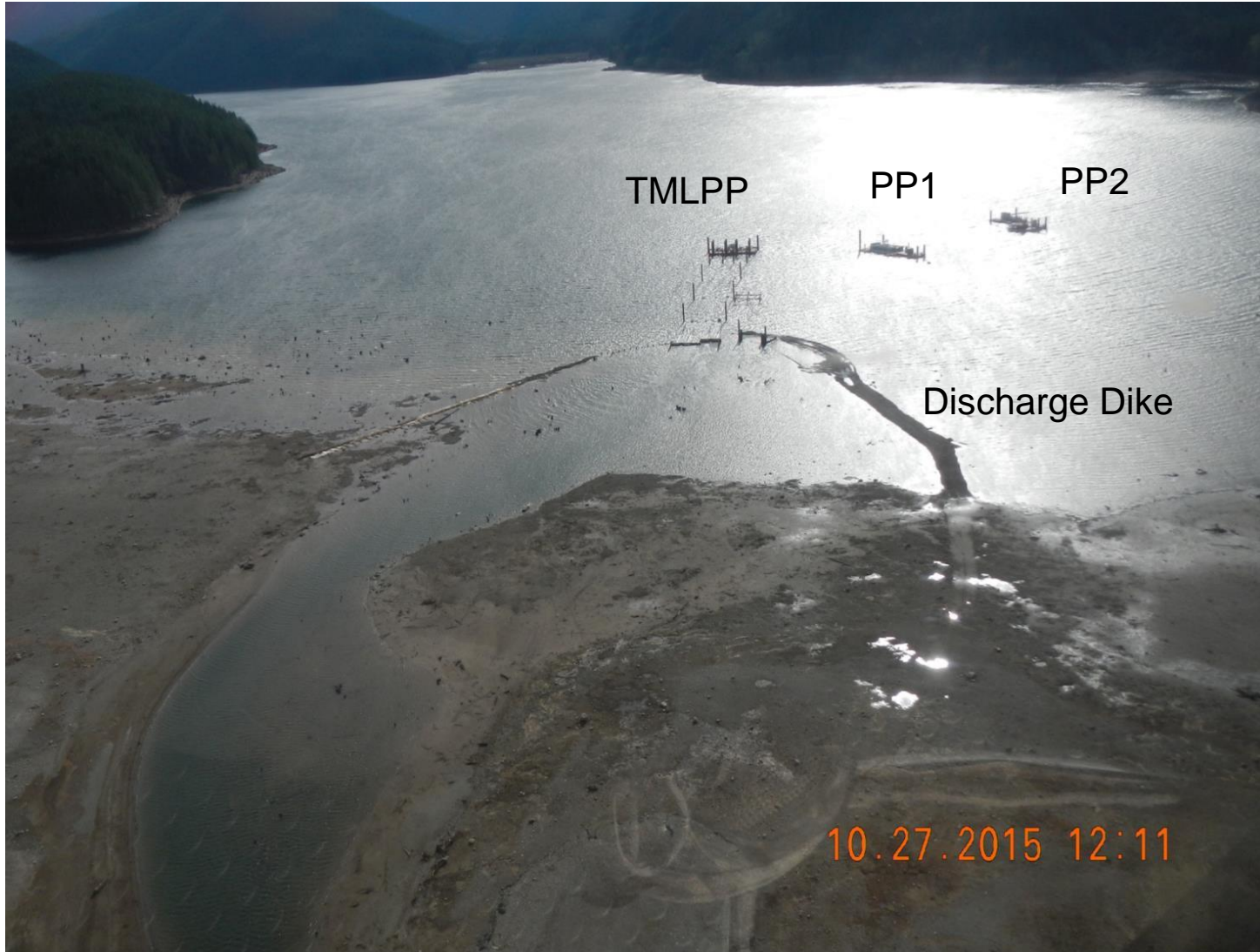
Current and Completed Project Milestones



Construction Status

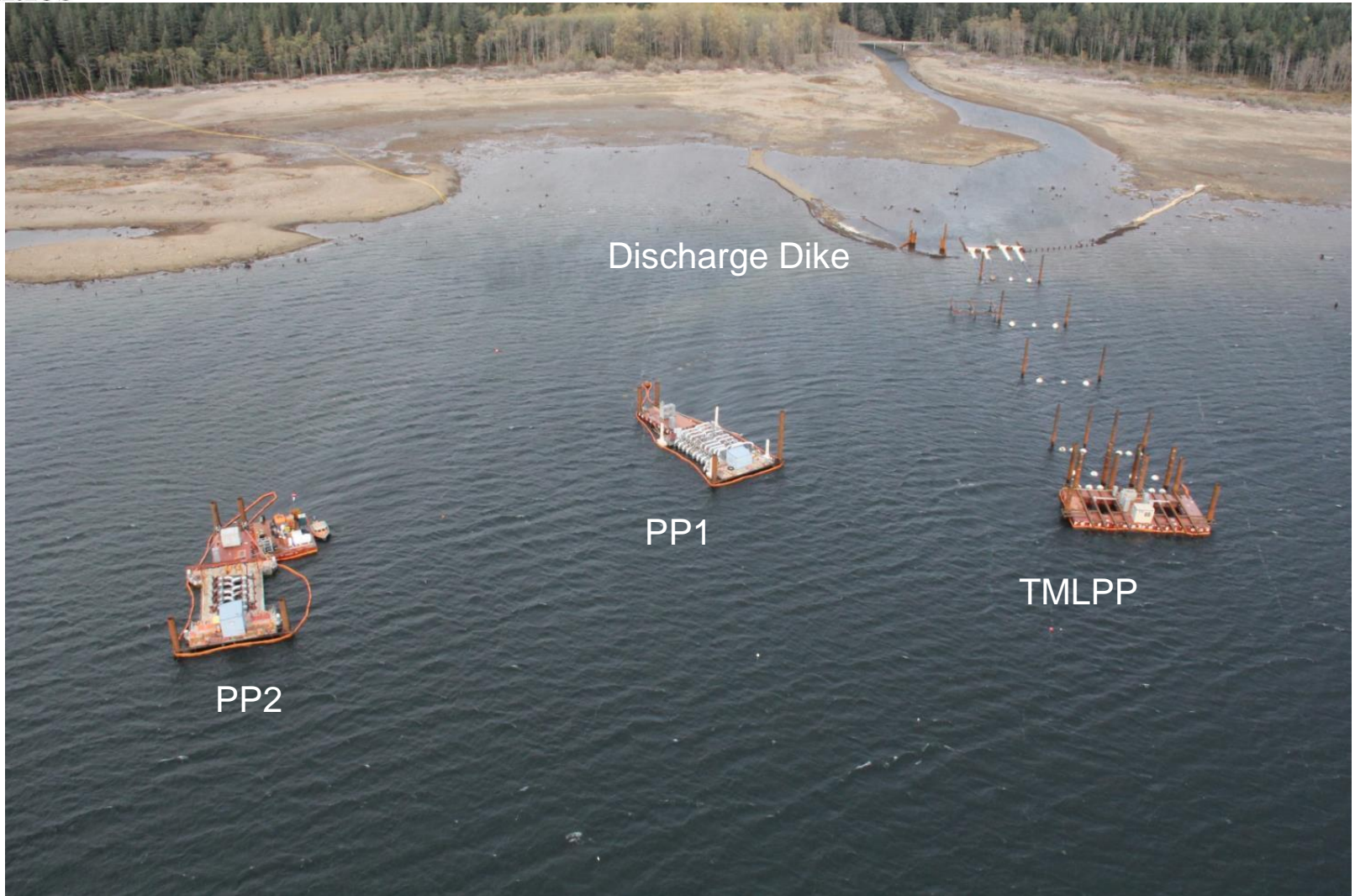
- 2nd Construction Season due to Drought Emergency; Fiscal impacts and design refinement opportunities
- Pipelines, buoy/floats, cables and electrical staging area improvements wrapping up
- Electrical switchgear trailer / testing generator setup tentatively complete middle Nov 2016
- Permanent barge & electrical enclosure construction tentatively complete late Nov 2016
- Testing & commissioning tentatively late Nov to Dec 2016

2015 Emergency Mobilization

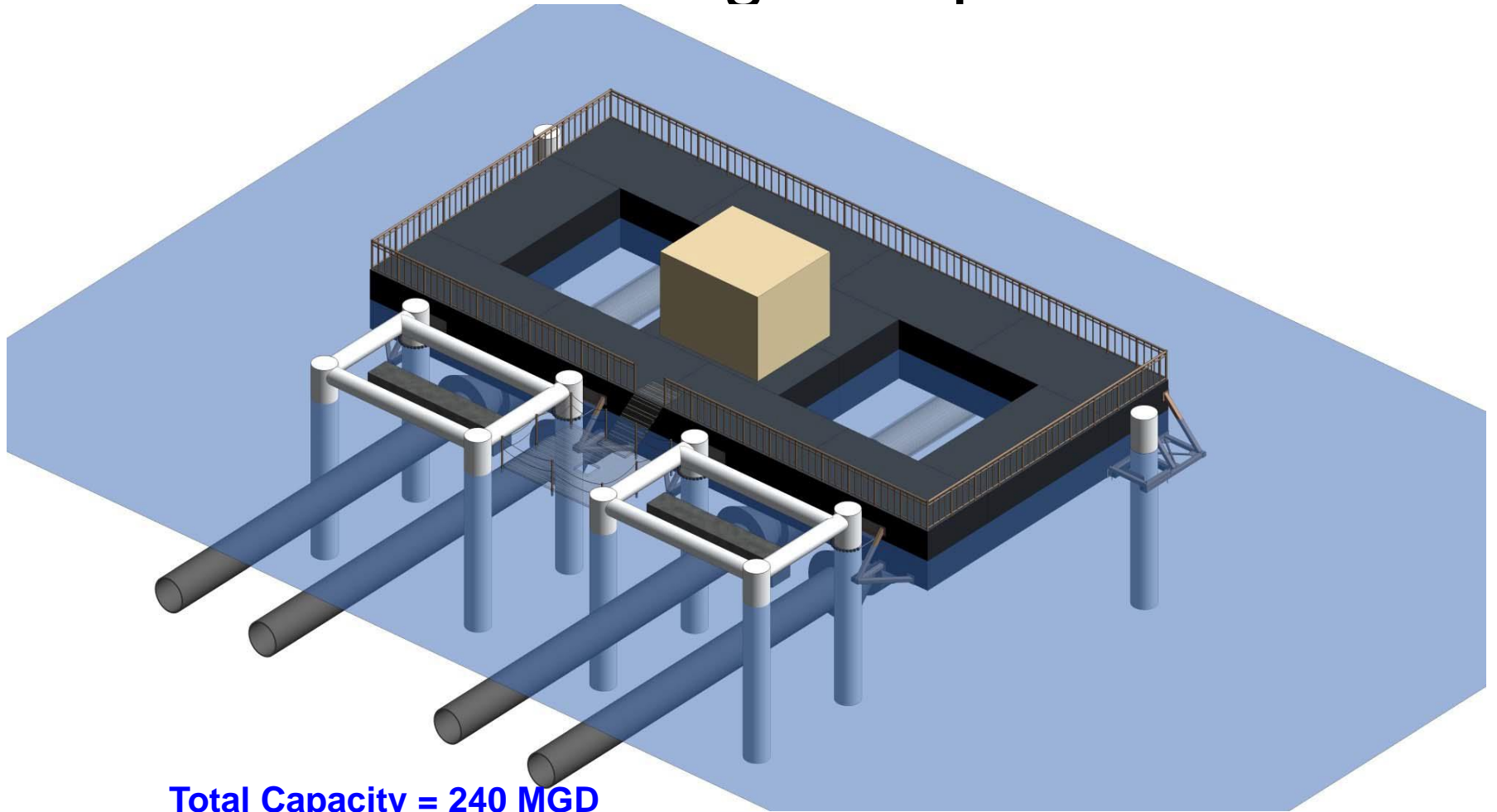


Morse Lake Pump Plant

2015 Emergency Mobilization



New Floating Pump Plant



Total Capacity = 240 MGD
4 Pumps @ 60 MGD/each

New Floating Pump Plant

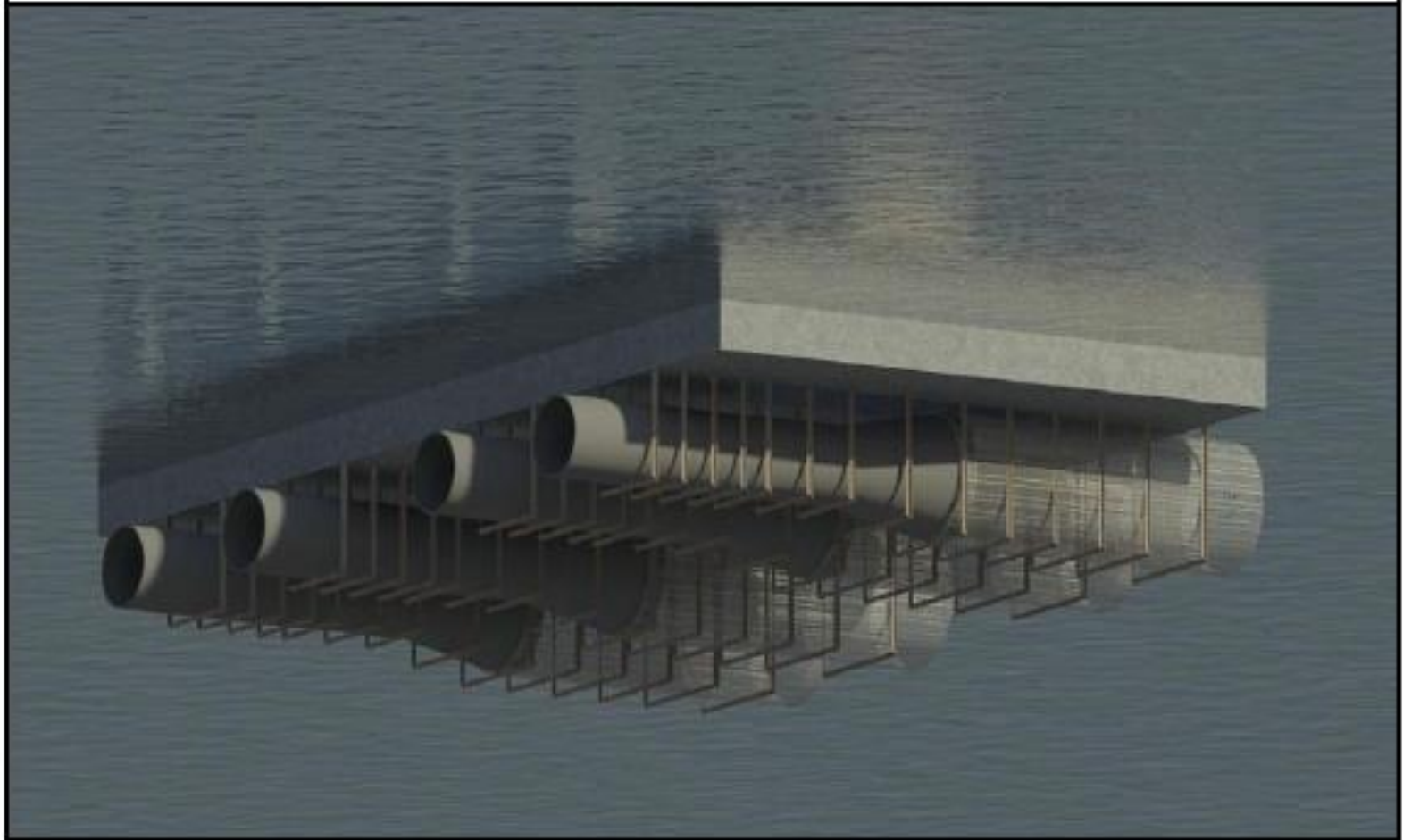


Figure 7-17 Pump Platform Configuration 2, Below-Water View

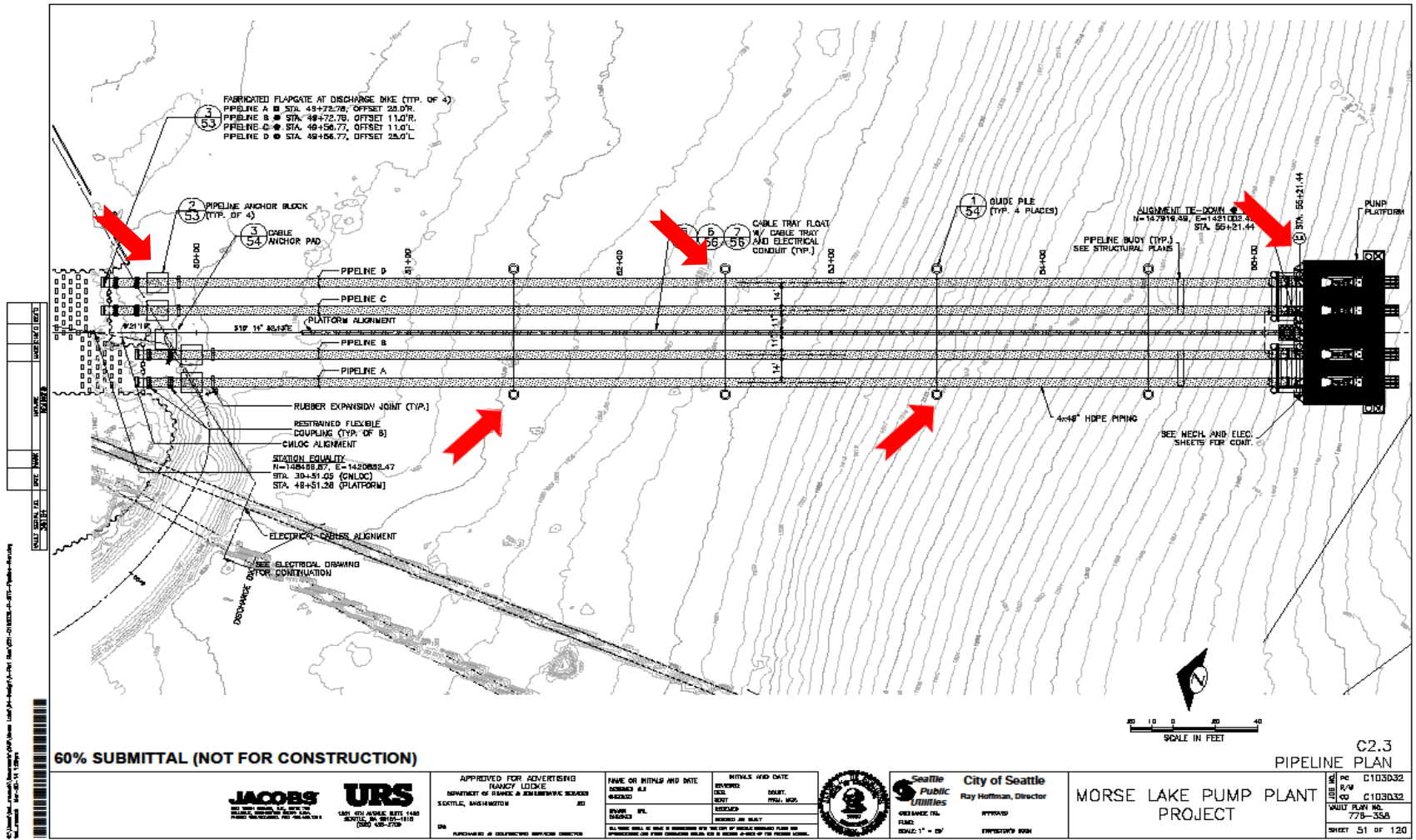
Pump & Fish Screen Assemblies



Morse Lake Pump Plant



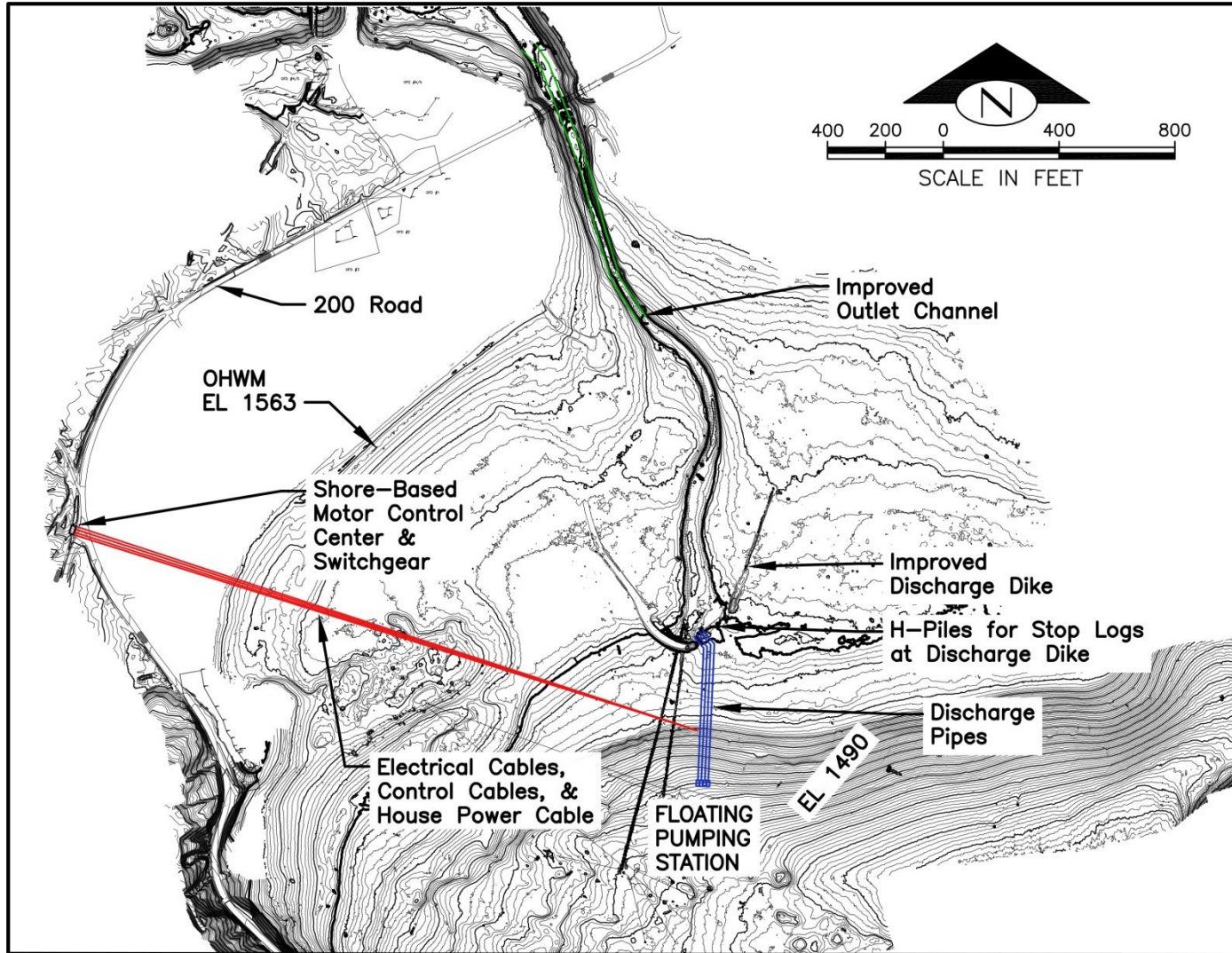
Pipeline & Piles



24" & 36" Pipe Piles



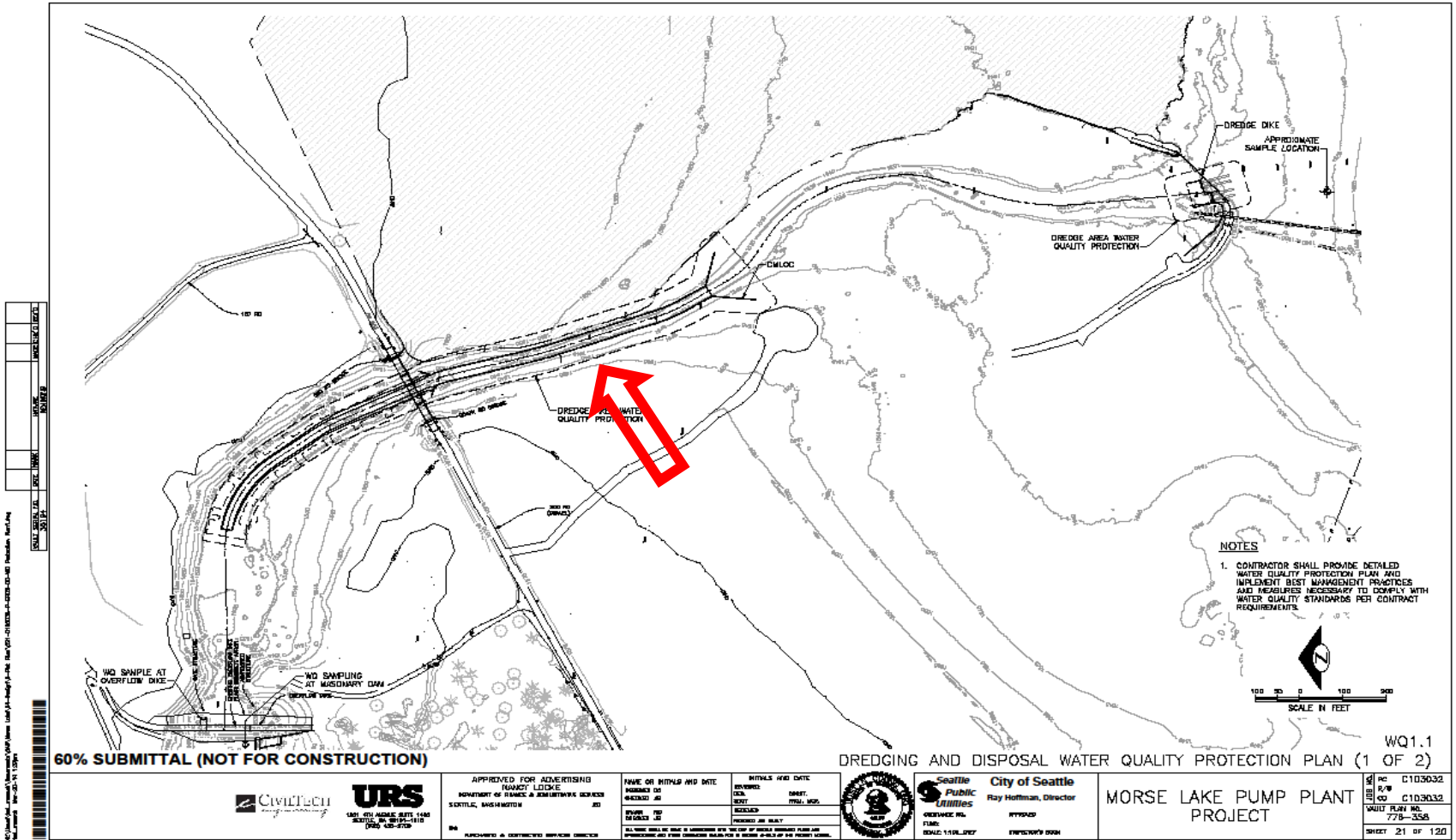
Power Supply



Morse Lake Pump Plant



Channel Conveyance



60% SUBMITTAL (NOT FOR CONSTRUCTION)
 DRAWING NO. WQ1.1
 DATE: 07/15/2011
 PROJECT: MORSE LAKE PUMP PLANT
 SHEET: 21 OF 120

 1501 4th AVENUE SUITE 1400 SEATTLE, WA 98101-3110 (206) 464-7000	APPROVED FOR ADVERTISING PROJECT: LOCK DEPARTMENT OF PUBLIC WORKS & CONSTRUCTION SERVICES SEATTLE, WASHINGTON	NAME OR INITIALS AND DATE DRAWN: JG CHECKED: JG DATE: 07/15/2011	RITUALS AND DATE REVIEWED: JG DATE: 07/15/2011 CHECKED: JG DATE: 07/15/2011	 City of Seattle Ray Hoffman, Director	MORSE LAKE PUMP PLANT PROJECT	SHEET NO. C1030332 SHEET NO. C1030332 SHEET NO. 21 OF 120
	PURCHASER & CONTRACTOR'S SERVICE DIRECTOR	ALL WORK SHALL BE DONE IN ACCORDANCE WITH THE USE OF FORCE MAINS PER THE USE AND OPERATIONS AND FORCE MAINS MANUAL IN SECTION 2-10.2.1 OF THE PROJECT MANUAL.		SEATTLE PUBLIC UTILITIES DEPARTMENT NO. WQ1.1 DATE: 07/15/2011	WQ1.1 DREDGING AND DISPOSAL WATER QUALITY PROTECTION PLAN (1 OF 2)	SHEET 21 OF 120



New Plant Pontoons



Morse Lake Pump Plant



New Plant Pontoons



Morse Lake Pump Plant

Channel Sheetpile Install



Morse Lake Pump Plant



Channel Dredging



Morse Lake Pump Plant

Dredging In-water Disposal



Morse Lake Pump Plant

Channel Support Beam System



Morse Lake Pump Plant

Channel Rock Armor Install



Morse Lake Pump Plant

Headframe Construction



Morse Lake Pump Plant

Modified Cable Termination Junction Box



Morse Lake Pump Plant

Modified Guide Cone



Morse Lake Pump Plant

Pipeline Flap Gate Installation



Project Cost Projection

Prior Years	2015	2016	2017	Estimate at Completion
\$ 18,736,244	\$ 12,944,140	\$ 14,607,143	\$386,000	\$ 46,673,527*
Design/Procure				
	Construction			
			Closeout	
* - Includes Potential Change Log				

The June 2016 CIP WOB presentation presented a Total Project Cost of \$42.3M. At the time several change orders were being negotiated and not captured in the estimate.



Questions?

Youngs Cove Moorage Piles