



*Meadow Mountain Fire*  
*August 24-25<sup>th</sup>, 2015*

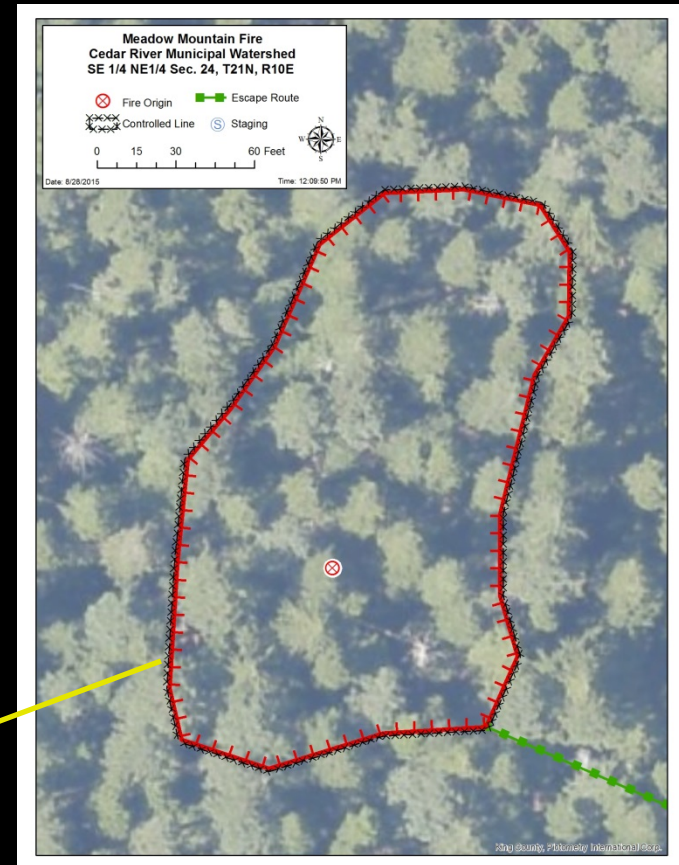
Cedar River Municipal Watershed  
SPU Wildland Fire Crew

# Location

Far east end of the upper watershed at the end of the 557 road (one hour from Cedar Falls)



*Looking west into the watershed*



12:03pm – MIT Wildlife staff reports a ¼ acre brushfire with 1-3 foot flames

# *Response Plan activated*

**SPU Wildland Fire Crew & WADNR respond to Cedar Falls Staging for assignments**

**Initial Attack crews locate and access the fire off the 557 Rd which is blocked for vehicle access by a slide and boulders (time for a hike)**



Smoke

# *Suppression Actions begin...*

**WADNR Helicopter was able to conduct water drops to knock down the head before crews arrived.  
Hand Crew arrives and conducts a SIZE-UP**

**Fire had active flanks of ½' to 3' flame length burning in old growth timber, brush, and forest litter. Several snags were burning.**



# *Suppression Continues...*

**Several snags had to be fallen to ensure firefighter safety and to limit fire spread. At 6pm fire activity increased and one slopover spot was quickly contained.**

**SPU Wildland Fire Crew Boss Darian Davis arrives and coordinates suppression actions, assignments, and resource orders with WADNR onsite representative Charlie Burns.**



# *Ongoing actions into the night...*

**SPU Watershed Dozer opens up the 557 road so crews can set-up a water supply**



**Transfer of Command takes place from WADNR to SPU (Davis) and crews are briefed for night operations**



# *Night Operations*

**Squads rotated off the line for a well deserved late night dinner of cold pizza and energy drinks, yummy!**

**11:00pm – scratch line complete and water flowing (1,900 feet of hose laid)**



# Details



- Full containment – Tuesday August 25<sup>th</sup>, 1700 hours
- Cause – lightning (August 12<sup>th</sup>)
- Size – ½ acre (.54 acres)
- Daily heat and smoke checks until ½” of rain occurs
- 7 total strikes were found inside the fire perimeter

*Point of Origin (POI)*



*Thanks to the dedicated SPU employees who  
made this a safe and successful operation!*

## **SPU Wildland Fire Crew**

Darian Davis - Incident Commander  
Ty Barrett – Engine Boss (IC overnight Ops)  
Steve Lockhart – Engine Boss (trainee)/sawyer  
Aaron Erman  
Josephine West  
Jesse Narog  
David Jolk  
Allison Ator  
Mark Benson  
Andy Chittick  
Amy LaBarge  
David McDonald  
Albert Ponio

## **Watershed Division Resources**

Suzanne Flagor – ICP Operations (Director)  
Neil Ditrani – Logistics  
Mara Boyd – Staging  
Lindy Morton – Communications  
Mark Joselyn – GIS  
Tom Vanburen – GIS  
Ken Lane – Dozer Operator  
Russel Forsin – Water Tender  
Ken McDonald – Water Tender  
Dennis Hoffer – Water Tender  
Connie Ronnel – support  
Jon Workman – support  
Rose Martin – support  
Penny Apodaca – support  
Steve Hogstrom – support  
Dwayne Paige – support  
Greg LeBon – support  
Mary Sackmann - support

2015  
SPU Wildland Fire Crew  
Cedar River and South Fork Tolt Watersheds

