

# Community Driven Solutions for Equitable Environmental Progress

Sudha Nandagopal  
Office of Sustainability & Environment

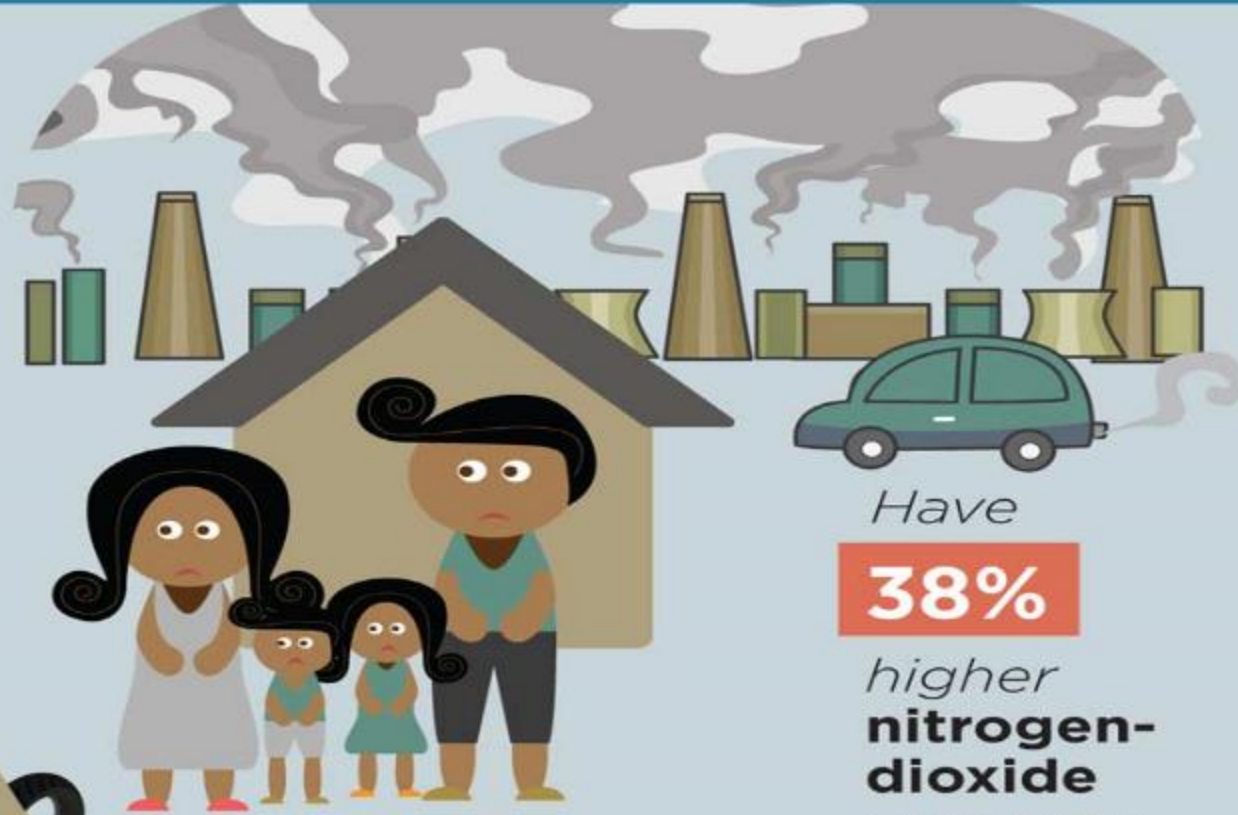


# Environmental Racism Is Nothing New

Race is the most significant predictor of a person living near contaminated air, water, or soil.

**56%**

*of the population near **toxic waste** sites are people of color.*



*People of color:*

*Have seen*

**95%**

*of their claims against polluters **denied by the EPA.***

*Have*

**38%**

*higher **nitrogen-dioxide** exposure.*

*Are*

**2x**

*more likely to live without **potable water** and **modern sanitation.***



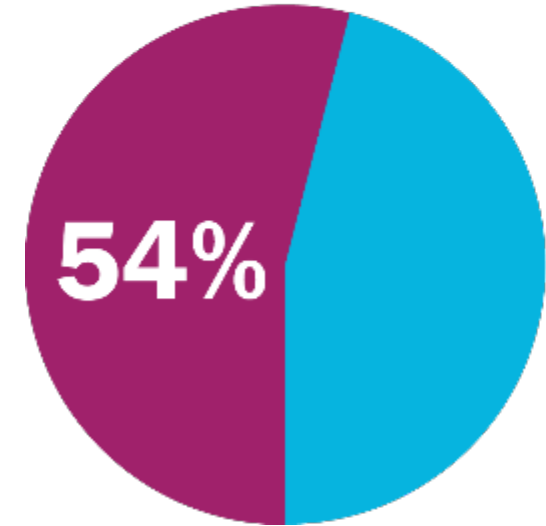
2005: **1 in 8** Americans  
were immigrants



2050: **1 in 5** Americans  
will be immigrants

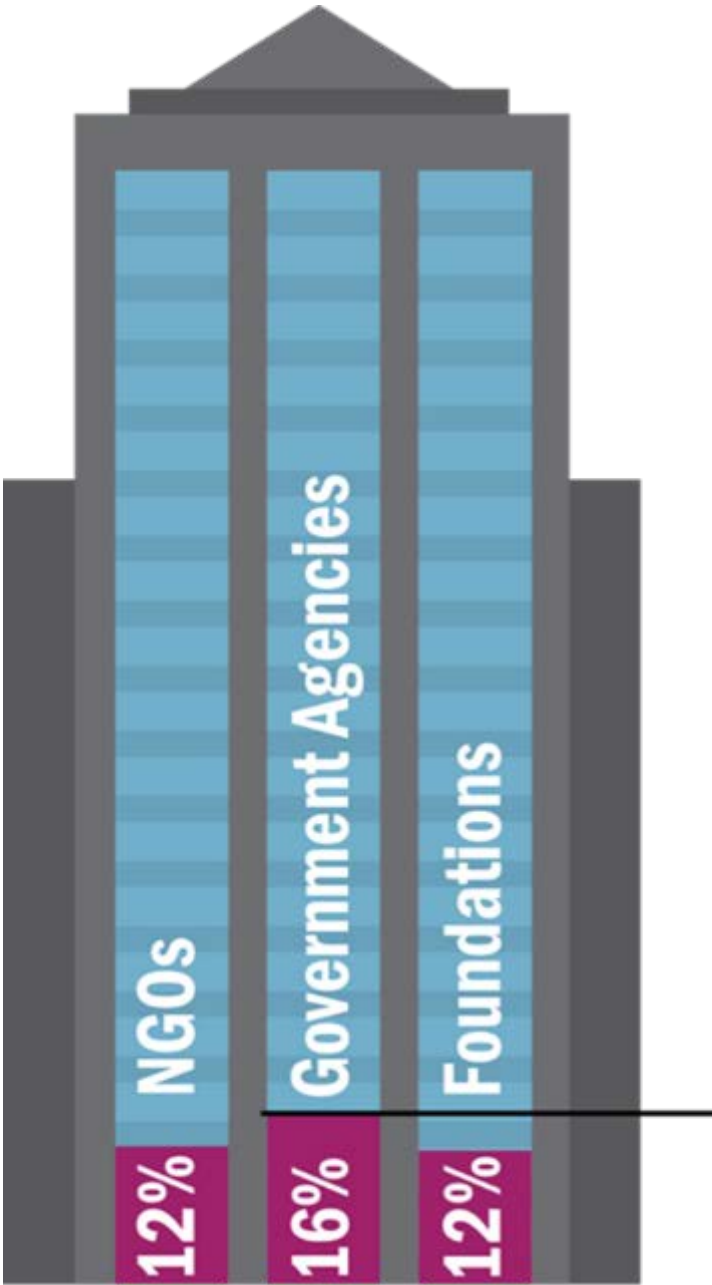


2040: **54%** people of color  
in Seattle-Tacoma-Bellevue  
Metro area



# Changing Demographics





## The Green Ceiling

“The Challenge,” The Green 2.0 Report



# MAJOR ROADWAYS

# ASTHMA RISK



**40%** of the heaviest roadways in Seattle are located within the **EEI Focus areas**.

Those living within **EEI Focus Areas** have a **48% higher asthma risk** than the rest of the city.

Diesel contributes to nearly **80% of the potential cancer risk** in Beacon Hill.  
(The Puget Sound Air Toxics Evaluation Final Report by The Puget Sound Clean Air Agency)



Citywide

EEI Focus Areas



# LOWER DUWAMISH WATERWAY

58% of the population that lives within one mile of the Superfund boundary are **people of color**.

58%  
People of  
Color

The Environmental Protection Agency's Superfund program is responsible for cleaning up some of the nation's most contaminated land.

# COAL & OIL TRAINS

Nearly 40% of the residents living within one mile of the impact zone are **people of color**.

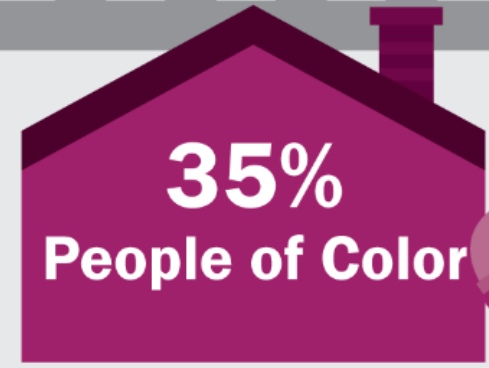
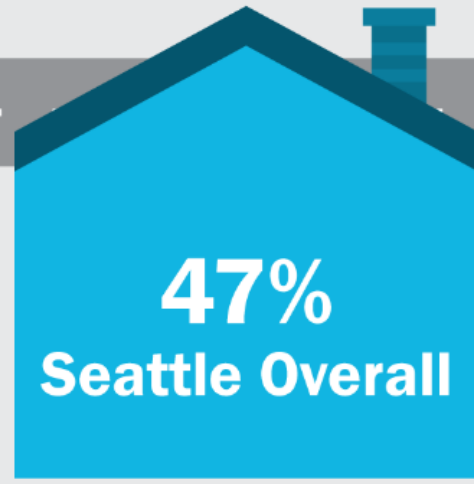
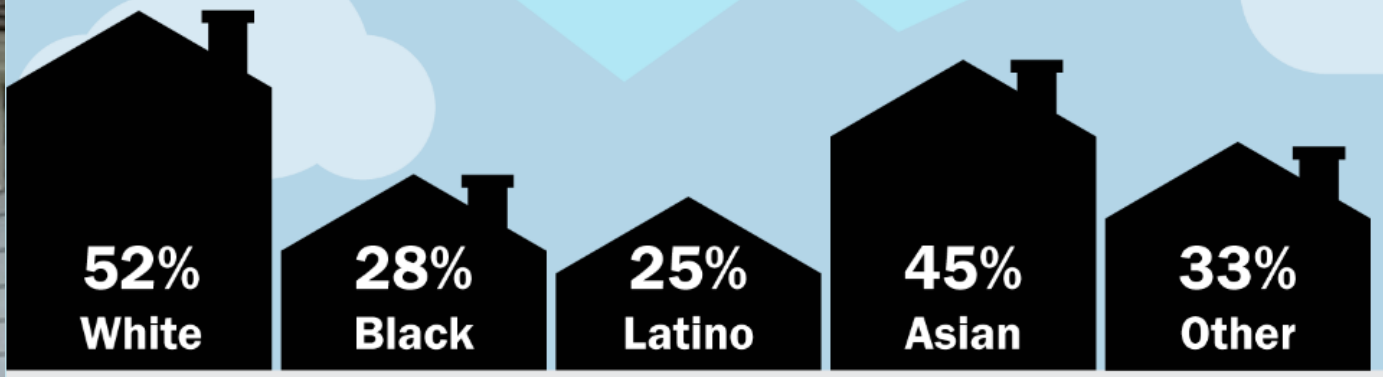
Over 50% of the land area in the **EEI Focus Areas** is located within one mile of the impact zone.

40%

50%



# HOMEOWNERSHIP RATES



Seattle's overall homeownership rate is 47% while People of Color own homes well below the average at 35%.



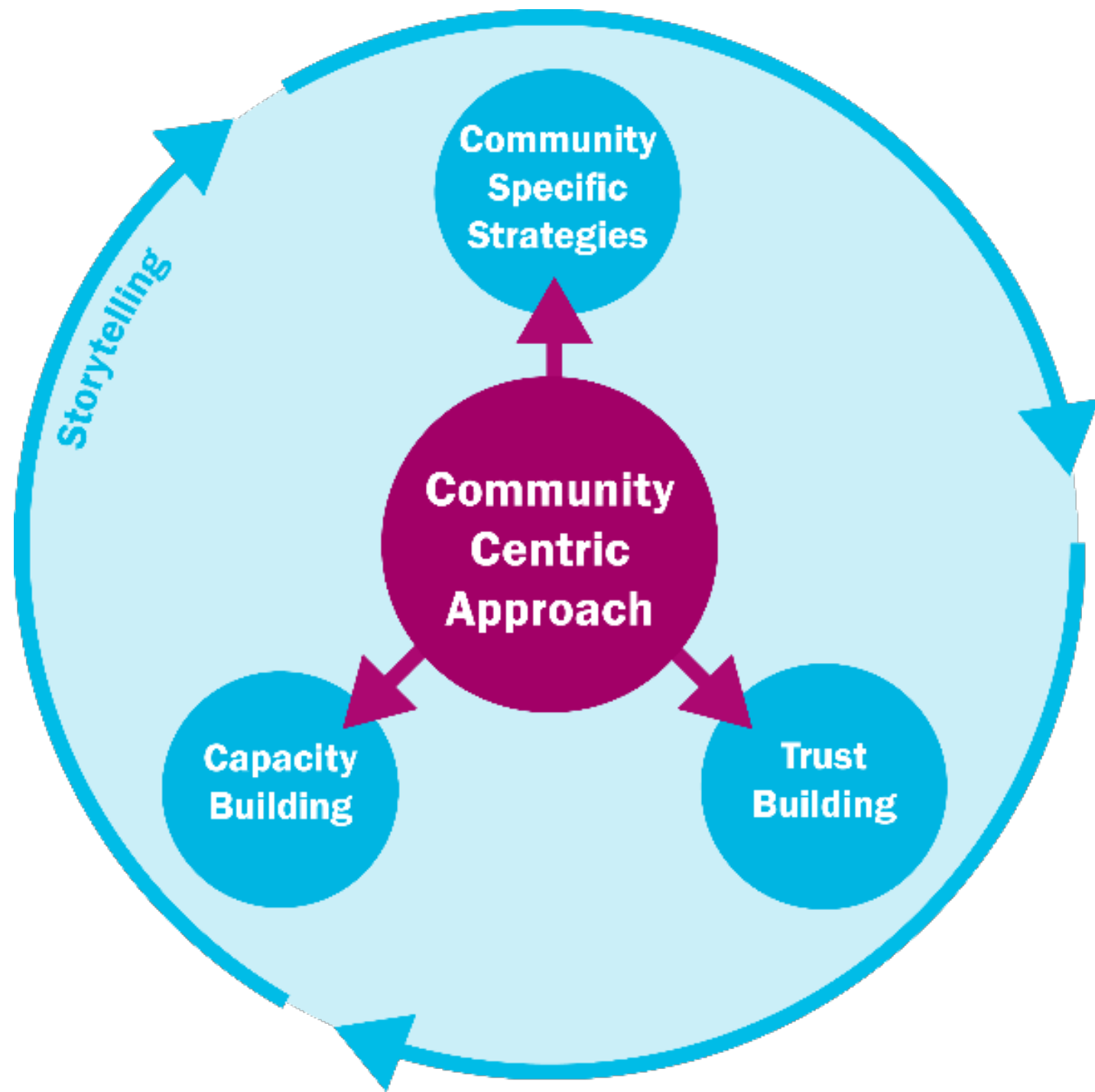
**“The environmental movement is also about civil rights and if that’s the case then the civil rights movement is an environmental one.”**

**–Mayor Ed Murray,  
City of Seattle**









# Community Partners Steering Committee

Abdullahi Jama – East African Community Leader & Advocate

Alberto Rodriguez – Duwamish River Clean Up Coalition

Dionne Foster – Puget Sound Sage

Hamda Yusuf – UW Student & Poet

Jamie Stroble – InterIm WILD

Jill Mangaliman – Got Green

José Manuel Vasquez – Latino Community Fund

Karia Wong – Chinese Information Service Center

Leika Suzumura – Seattle Tilth, Rainier Beach Urban Farm

Lisa Chen – FEEST

Lylianna Allala – Environmental Leadership Program

Nate Moxley – Solid Ground, Lettuce Link

Paulina Lopez – South Park Resident

Roshni Sampath – Statewide Poverty Action Network

Roxana Norouzi – OneAmerica

Yalonda Allen-Sinde – Umoja Peace Center





# Over 800 community members

Activities were as unique as the communities they engaged.



Ethnicities and populations:



Languages:







**A blueprint for  
advancing race &  
social justice in  
Seattle's  
environmental  
work**



"When my car broke down, I took two buses and walked uphill to get all my groceries home, perishable items from EBT. The healthy stuff is heavy. It's hard to carry on the bus. And heavy groceries with my three year old kid, it was a source of stress."

— Community member, Solid Ground



## HEALTHY ENVIRONMENTS FOR ALL

AIR, WATER, GREEN SPACE, FOOD, SAFETY & QUALITY OF LIFE

35

"We believe that transformative and meaningful change at a large scale needs to be led by those most affected by injustice."

— Latino community member,  
South Park



## EQUITY IN CITY ENVIRONMENTAL PROGRAMS

INCREASING COMMUNITY ACCESS AND DECISION-MAKING

36

"We want mentorship opportunities across all levels of career (entry, mid, and senior level) set up in workplaces. We want this to be the norm and not the exception."

— Community member, Environmental  
Professionals of Color



## JOBS, LOCAL ECONOMIES & YOUTH PATHWAYS

OPPORTUNITIES FOR LOCAL GREEN CAREERS

37

"We know that 'environmentalism' has a long history of exclusion; shifting the framing and language around environmental issues is an important first step in engaging our communities in environmental decision-making."

— Community member, Puget Sound Sage



## ENVIRONMENTAL NARRATIVE & COMMUNITY LEADERSHIP

CELEBRATING STORIES AND INVESTING IN COMMUNITY

38



Identify Policy  
Opportunities

---

Environmental  
Justice  
Committee



# Support Pilot Projects

---





# Measure City Progress

---

## MOVING THE NEEDLE

CITY OF SEATTLE  
Environmental Progress Report  
APRIL 2017

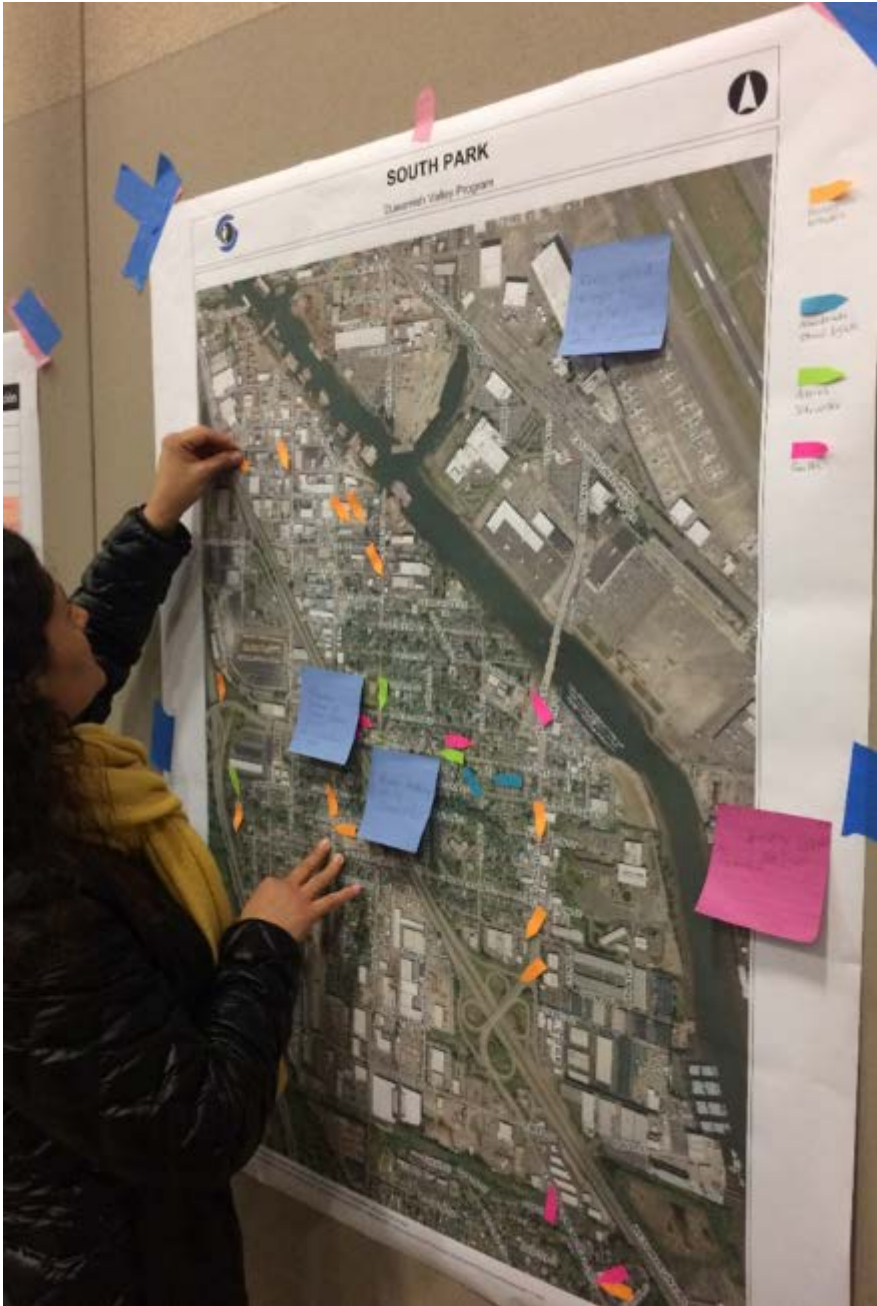




Alignment  
with the  
Agenda

---





# Duwamish Valley Program & Fresh Bucks To Go

---

# **EQUITY & ENVIRONMENT**

**An Initiative of the City of Seattle**