



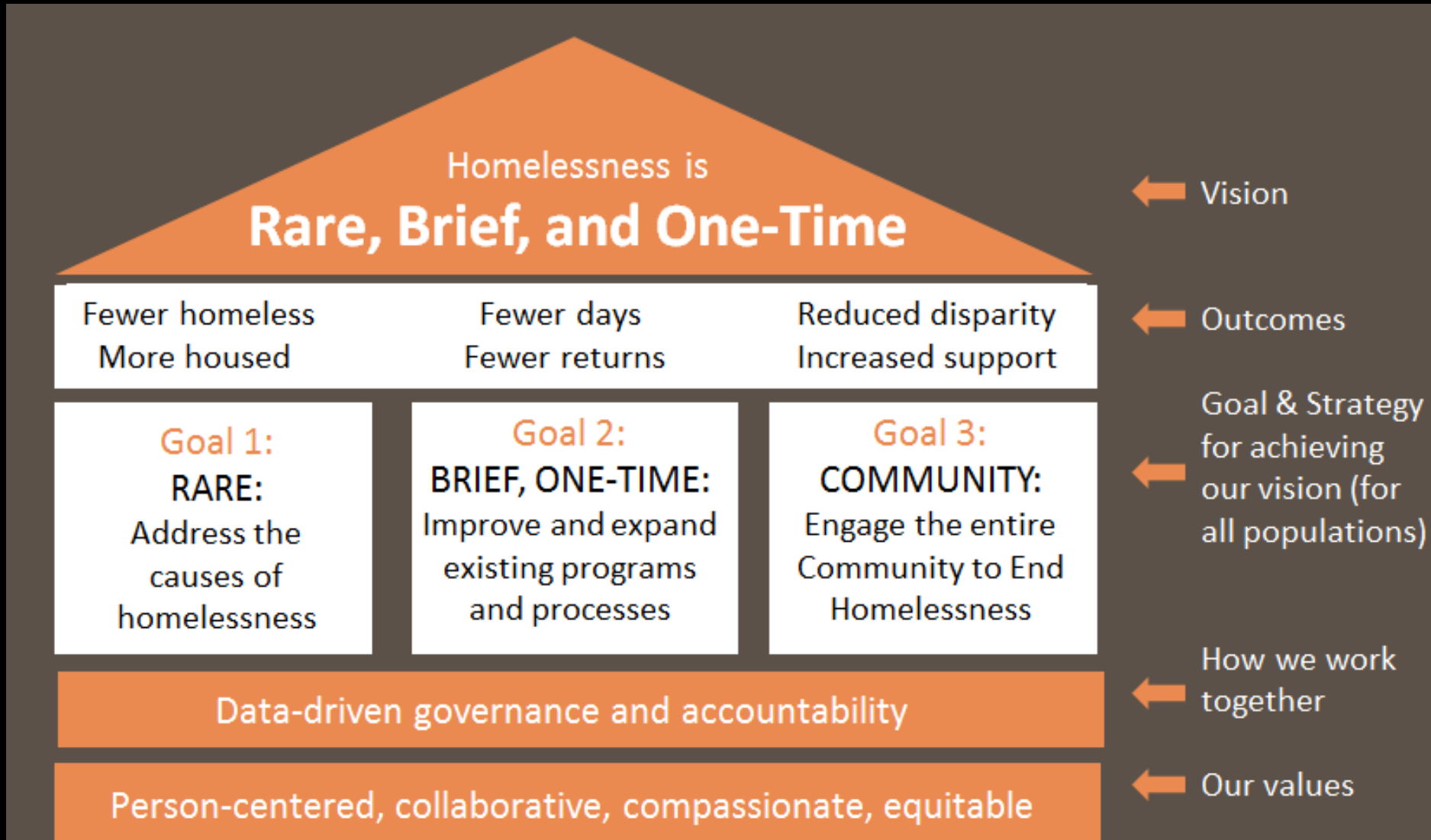
Homelessness in Seattle/King County

January 10th, 2019



STRATEGIC PLAN: JULY 2015-JUNE 2019

A Regional, Aligned, Community Plan to End the Experience of Homelessness among Residents of Seattle/King County

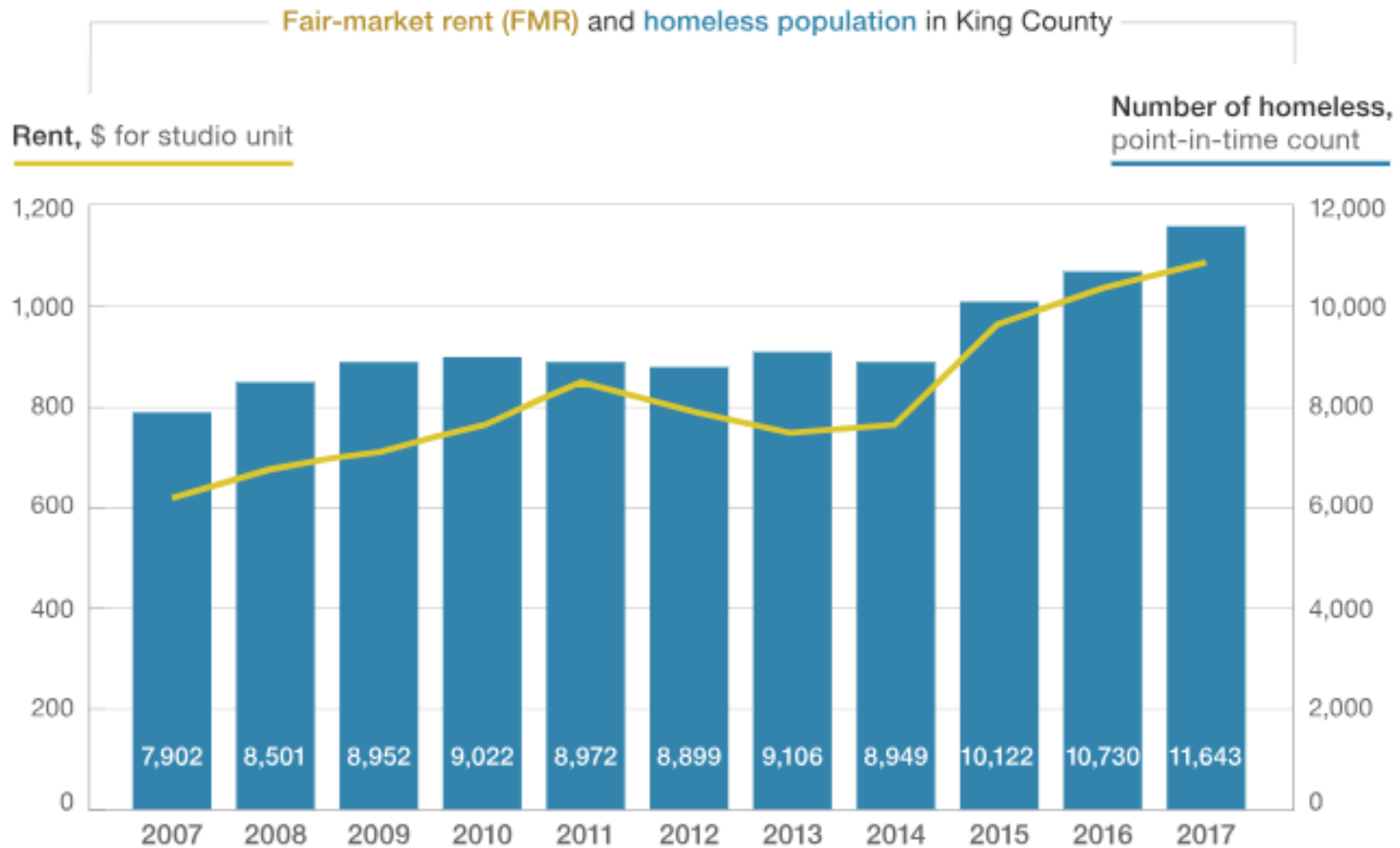


Community-level Determinants of Homelessness

Research of 300+ cities and states found statistical correlation between these factors and rising homelessness:

Housing market	Increasing rents have a direct correlation on homelessness in urban and suburban areas
Economic conditions	Areas with high poverty and unemployment rates associated with higher rates of homelessness
Demographic composition	Areas with more Hispanic, baby boomer, and single person households associated with higher rates of homelessness
Safety net	States with lower mental health expenditures associated with higher rates of homelessness
Transience	Areas with more recently moved people associated with higher rates of homelessness

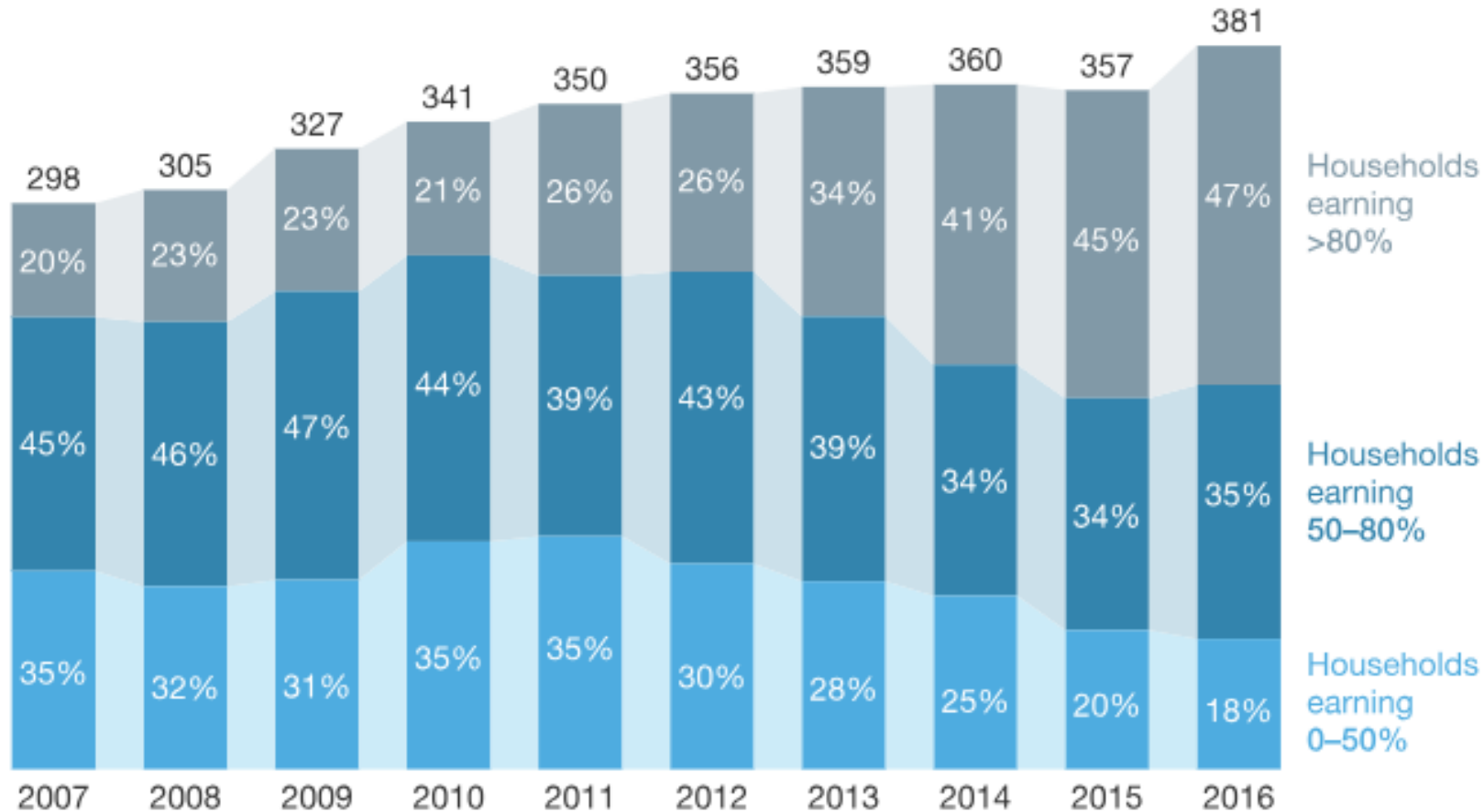
Rent increases in Seattle's King County show a strong correlation with homelessness.



Source: Stringfellow & Wagle with McKinsey & Company (May 2018). [The Economics of Homelessness in Seattle and King County \(article\)](#).

Supply of affordable rental units by area-median-income tier in King County

Number of rental units,¹ by area-median-income tier,² thousand



¹Figures may not sum to 100%, because of rounding.

²All estimates shown are midpoints of confidence intervals.

Source: Stringfellow & Wagle with McKinsey & Company (May 2018). [The Economics of Homelessness in Seattle and King County \(article\)](#).

2018 King County Point-in-Time Count Results



12,112

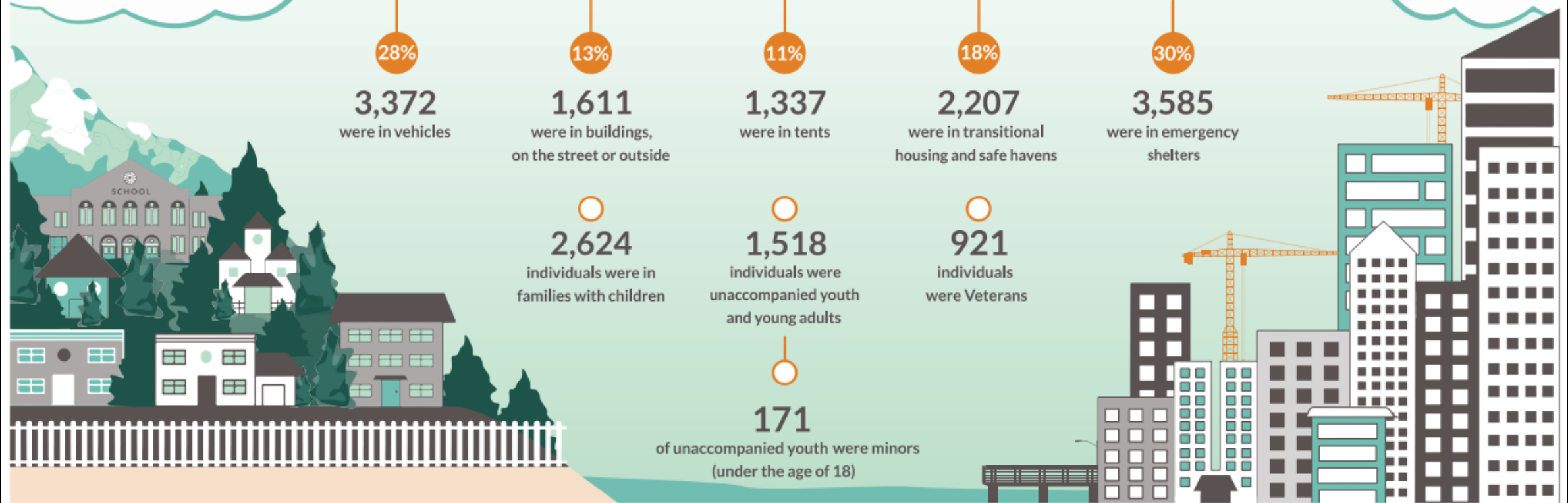
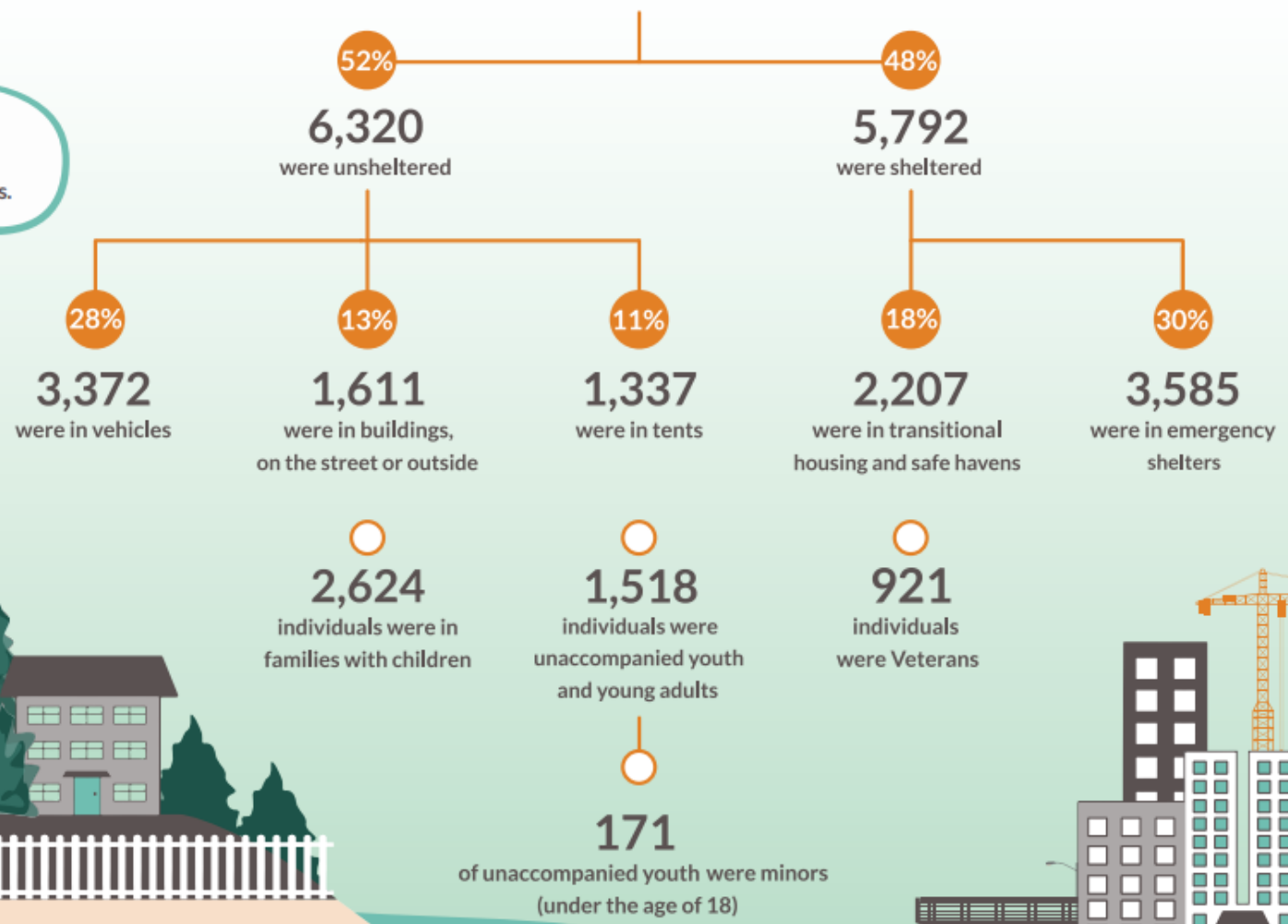
People were experiencing homelessness in King County on January 26, 2018

52% of people experiencing homelessness identified as people of color; however, people of color make up only 33% of the King County general population.

The highest disparities were observed among those identifying as Black/African American, Hispanic/Latino, American Indian/Alaska Native, Native Hawaiian/Pacific Islander and multiple races.

98% of survey respondents said they would move into safe and affordable housing if it were offered

80% of survey respondents cited more affordable housing and rental assistance as key to ending their homelessness

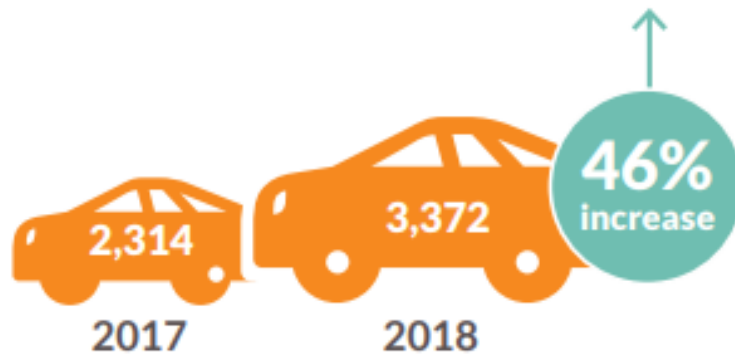


COUNT US IN RESULTS

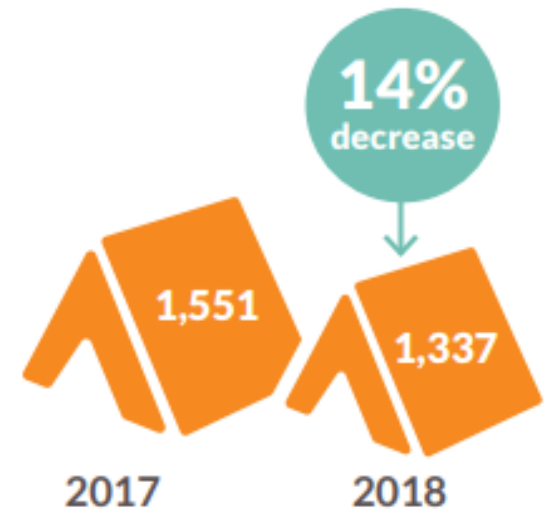
THE UNSHELTERED POPULATION IS CHANGING AND WE WILL NEED TO FIND SOLUTIONS TO ADDRESS THE NEEDS OF OUR COMMUNITY

The unsheltered population is changing.

An increasing number of people experiencing homelessness are living in vehicles.



Fewer people are living in tents.



COUNT US IN RESULTS

AREAS OF PROGRESS DEMONSTRATE THE IMPACT OF COORDINATED, PERSON-CENTERED APPROACHES WITH TARGETED AND INCREASED INVESTMENTS

Targeted investments have significantly reduced veterans' homelessness.

Increased and targeted investments from the federal and local level have helped us better coordinate regional resources and streamline our response system resulting in significant progress towards ending Veteran homelessness.



We are also making progress on youth homelessness, specifically for those under the age of 18.

While the overall number of youth and young adults experiencing homelessness remains steady, similar to veterans homelessness, we've started to see a reduction in homelessness among minors after considerable state and local efforts to address youth homelessness. With a continued investment of resources and coordinated approaches, we can make an even greater impact.



COUNT US IN RESULTS

52% of people experiencing homelessness identified as people of color; however, people of color make up only **33%** of the King County general population.

The **highest** disparities were observed among those identifying as Black/African American, Hispanic/Latino, American Indian/Alaska Native, Native Hawaiian/Pacific Islander and multiple races.

HOMELESSNESS DISPROPORTIONATELY IMPACTS PEOPLE OF COLOR AND OTHER HISTORICALLY MARGINALIZED POPULATIONS

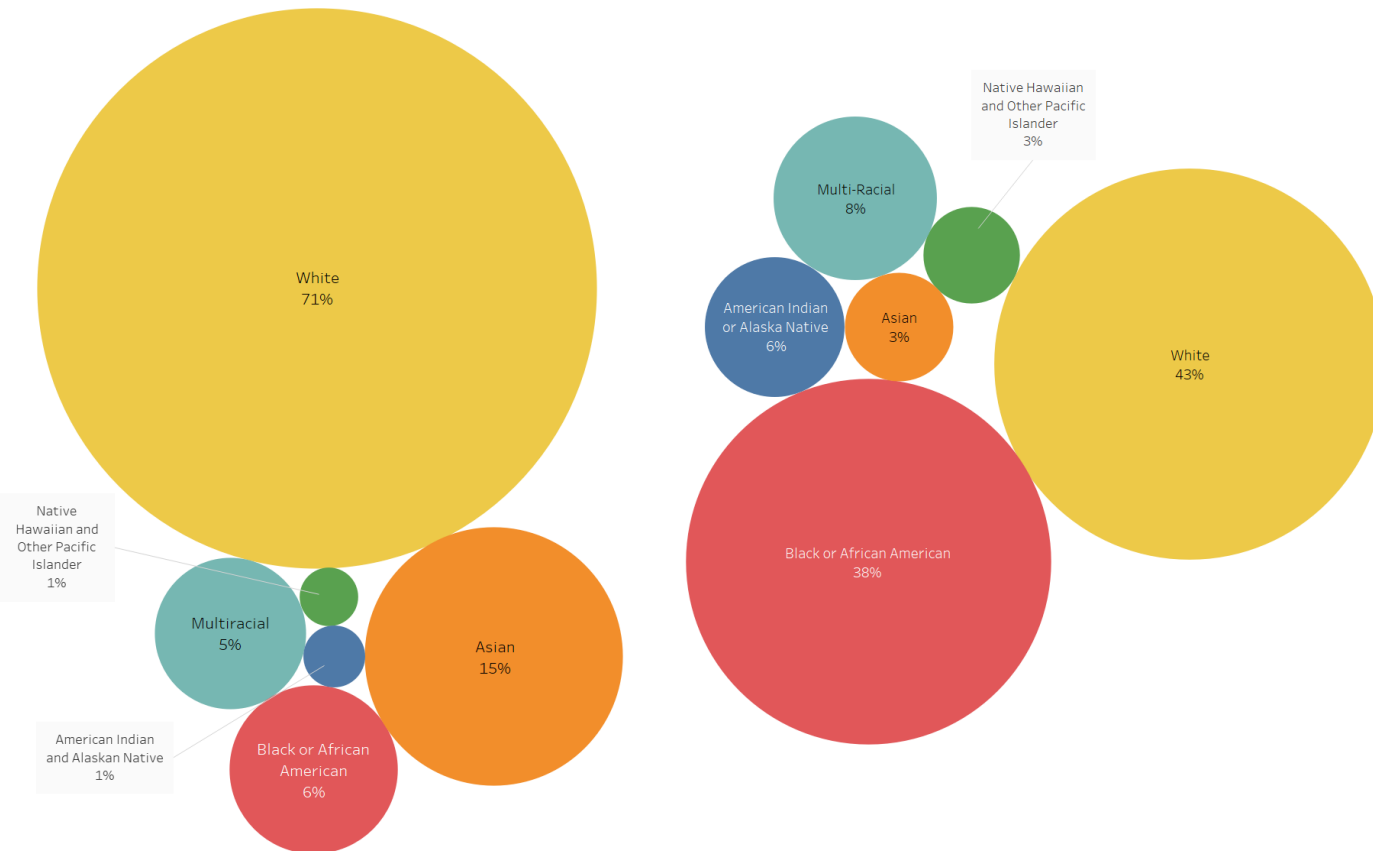
COMMUNITIES OF COLOR AND PEOPLE WHO IDENTIFY AS LGBTQ ARE MORE LIKELY TO EXPERIENCE HOMELESSNESS AND MORE LIKELY TO BE UNSHELTERED

WHAT THE DATA TELLS US

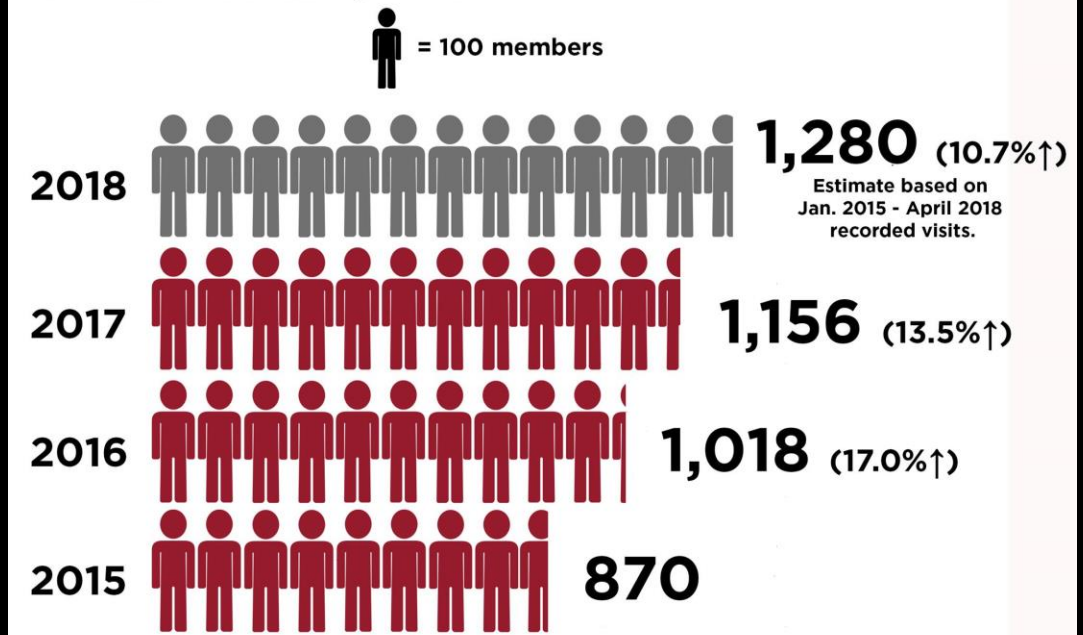
In King County, People of Color are overrepresented as a proportion of the homeless population when compared to the general population.

King County General Population

King County Homeless Population



Homeless Crisis: Native Population's Continual Increase Chief Seattle Club Members, 2015-2018

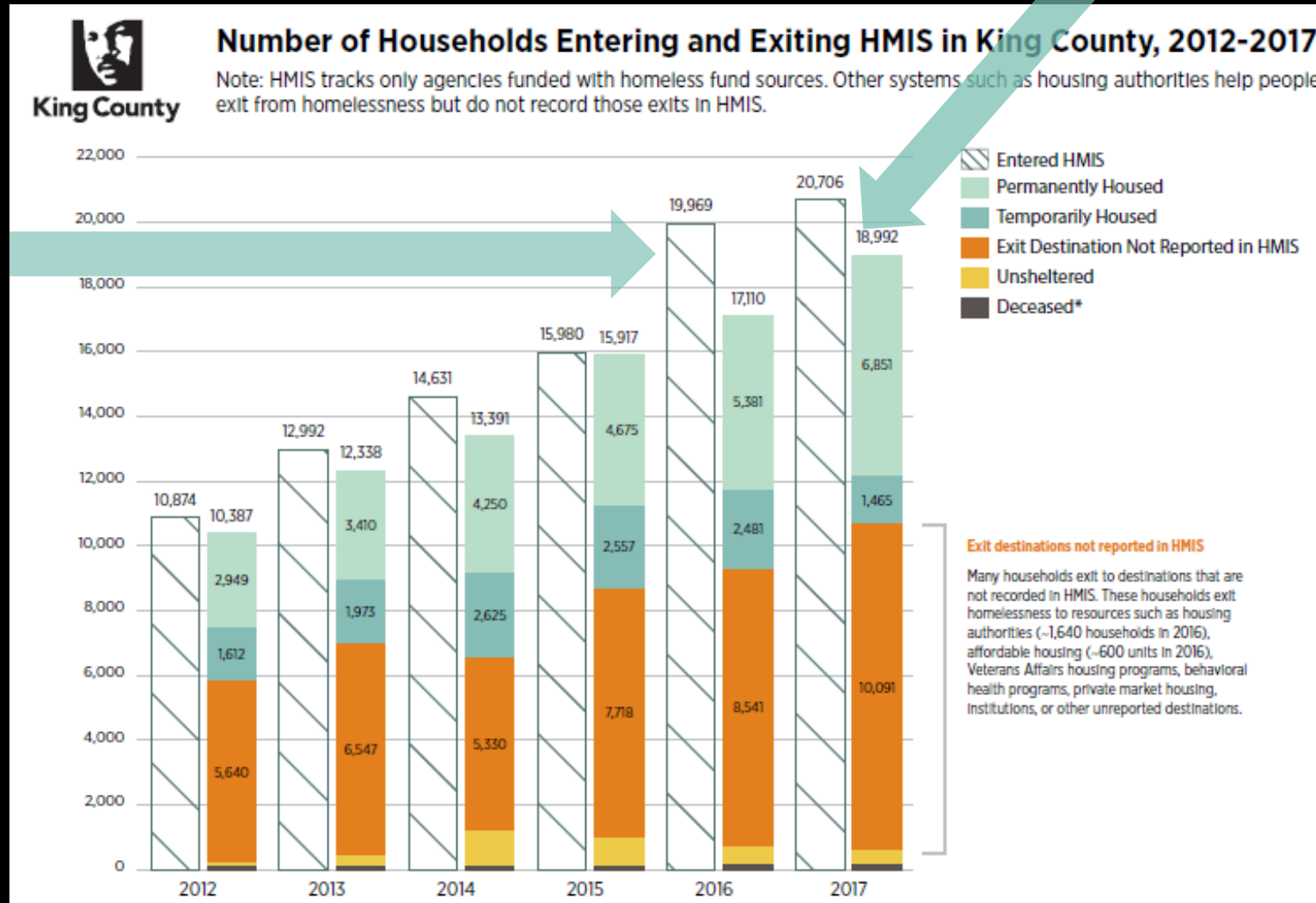


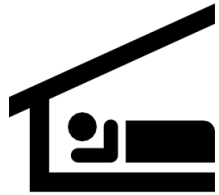
Data from Chief Seattle Club. Prepared by the Urban Indian Health Institute.

Homelessness Over the Course of a Year

Expanding RRH & Permanent Housing options to increase PH exits & reduce LOS

Targeting prevention to reduce the # of people entering the system





Reduce the number of people who experience homelessness by targeting our **prevention** resources



Reduce the number of people who need shelter by utilizing **Diversion**



Increase the number of people who move into **permanent housing** and the time in which they do so



Functional Zero:
When everyone who needs emergency assistance can receive it without waiting and exits to PH within 20 days

Our "System"



PREVENTION

Legal Aid

Eviction Prevention Assistance

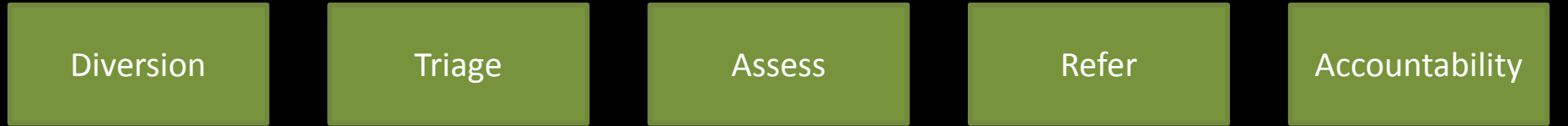
Housing Stabilization Services



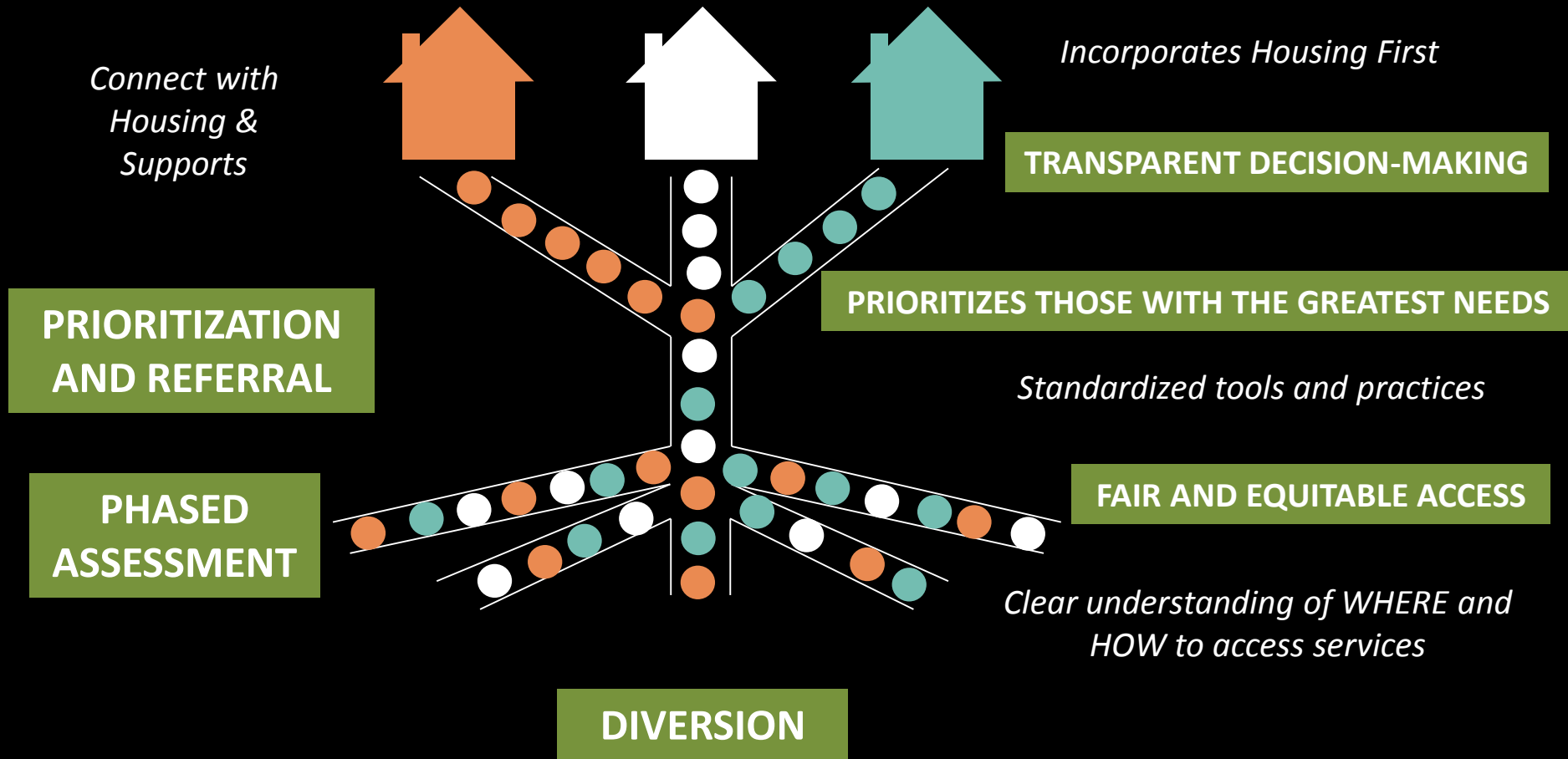
Crisis Response System



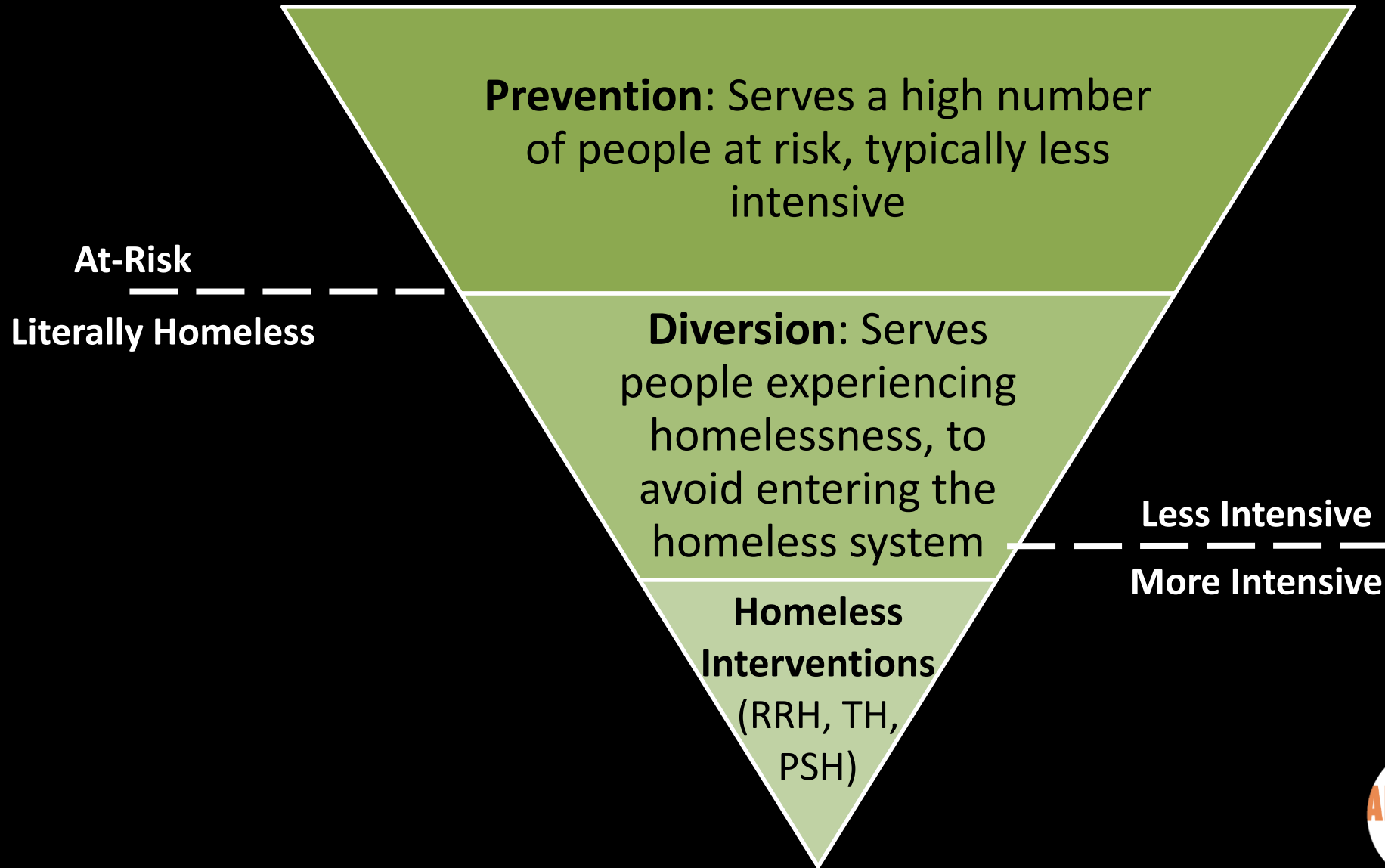
Coordinated Entry for All
(Regional Access Points & Referral Specialists)



Coordinated Entry – Continuous Improvement

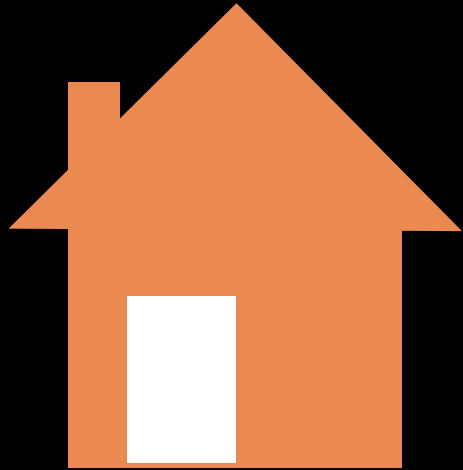


Prevention vs Diversion

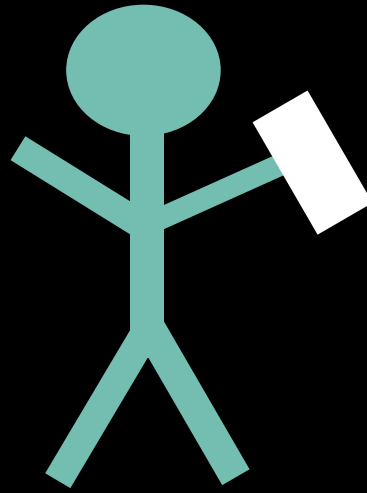


Rapid Re-housing

Rapid re-housing is a cost-effective strategy to help people successfully exit homelessness and maintain permanent housing by integrating three components: employment assistance, case management, and housing services.



**Housing
Services**



**Case
Management**



**Employment
Assistance**

Tracking and Monitoring System Performance

System Performance Dashboard

1/1/2017 to 12/31/2017

How is our system performing?

Exits to Permanent Housing	Average Length of Stay	Returns to Homelessness	Homeless Entries	Utilization Rate
35%	92	10%	75%	91%

THE WORK AHEAD

Homelessness will only be solved with the commitment and resources of our
ENTIRE COMMUNITY.

Join Us



Say Hello



Share Your Time



Speak Up



Rent Or Hire



Kira Zylstra

Kira.zylstra@allhomekc.org

www.allhomekc.org

