



Seattle Transportation Plan

A Vision for the Future of Transportation in Seattle

Welcome!

Agenda for our meeting:

- Provide an overview of transportation and the STP
- Highlight the need for the STP
- Share the STP planning process



What is our transportation system?



What is our transportation system?

SDOT is the steward of the City's street right-of-way, accounting for 27% of land in Seattle.

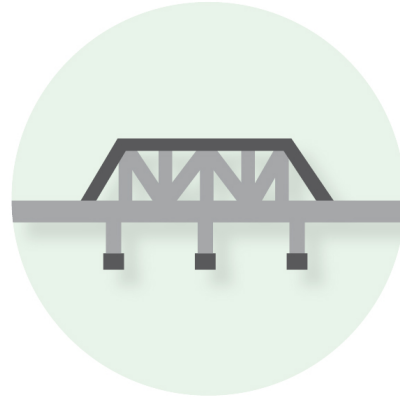
Right-of-way is public property in which paved streets, alleys and public stairways are located. Rights-of-way often include sidewalks, medians landscaped areas, and retaining walls.



What is our transportation system?



3,900 lane
miles of
streets



125 bridges



502 stairways



191,000+
signs

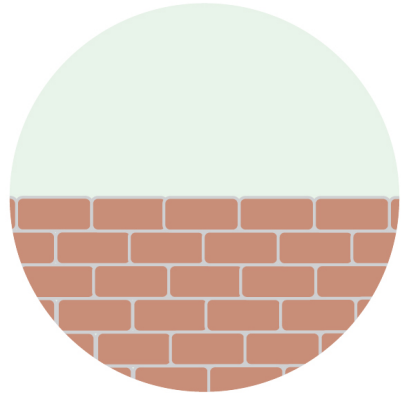


2,300 miles
of sidewalk
and medians

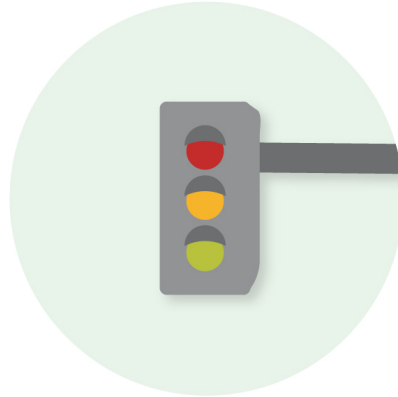


32,000+
curb ramps

What is our transportation system? (continued)



600 retaining walls and sea walls



1,100 traffic signals



1,581 pay stations



41,000 SDOT street trees (600,000 in City right-of-way)



7,000,000 square feet of landscaped areas

What is the Seattle Transportation Plan?

The Seattle Transportation Plan (STP) is our commitment to building a transportation system that provides everyone with access to safe, efficient, and affordable options to reach places and opportunities.

The STP is the vision for the future of transportation in Seattle.

What is the Seattle Transportation Plan?

The plan will:

1. **Collectively reimagine our transportation vision**
2. **Plan for people first, connecting you to the places that matter most to you**
3. **Remain grounded in our steadfast values**
4. **Meet the moment with inclusive engagement**



What is the Seattle Transportation Plan?

Our previous transportation plans and initiatives

Transportation needs and functions



What is the Seattle Transportation Plan?

Grounded in SDOT's values

Guided by community engagement

-  Equity
-  Sustainability
-  Safety
-  Livability
-  Mobility
-  Excellence

Seattle Transportation Plan



Why does Seattle need this plan now?



Urgent and emerging challenges, such as:

- COVID-19
- Climate change
- Population growth



To continue funding transportation:

- Labor cost increasing
- Materials cost increasing
- Levy to Move Seattle expires 2024



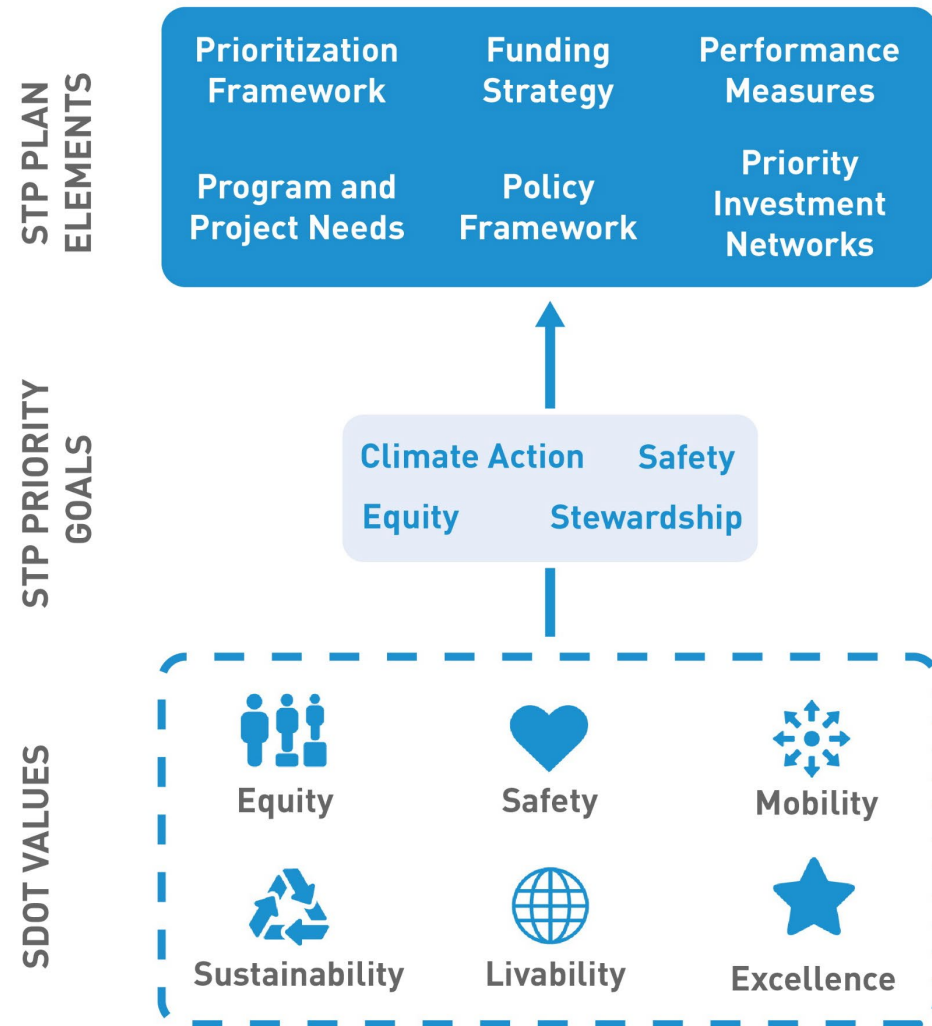
Align with ongoing Seattle Comprehensive Plan:

- "One Seattle"
- Shared vision
- Integrated strategies

What values drive our transportation vision?

Our organizational Values feed the Goals and technical elements of the STP.

Community engagement will influence all elements of the STP.



Who is involved with the STP?

Led by the Seattle Department of Transportation in partnership with:

- City departments
- Transportation Equity Workgroup
- Community-based organizations
- Community liaisons (in the Department of Neighborhoods)
- SDOT modal advisory boards
- General public
- Agency Partners



How is the public involved?

- The STP will be guided by you
- Engage citywide, and with people traditionally left out of the planning process
- We will build community capacity
- We will collaborate on new engagement strategies

1

Phase 1

May - September 2022

Review values and priorities

2

Phase 2

September 2022 - January 2023

Integrate values and priorities

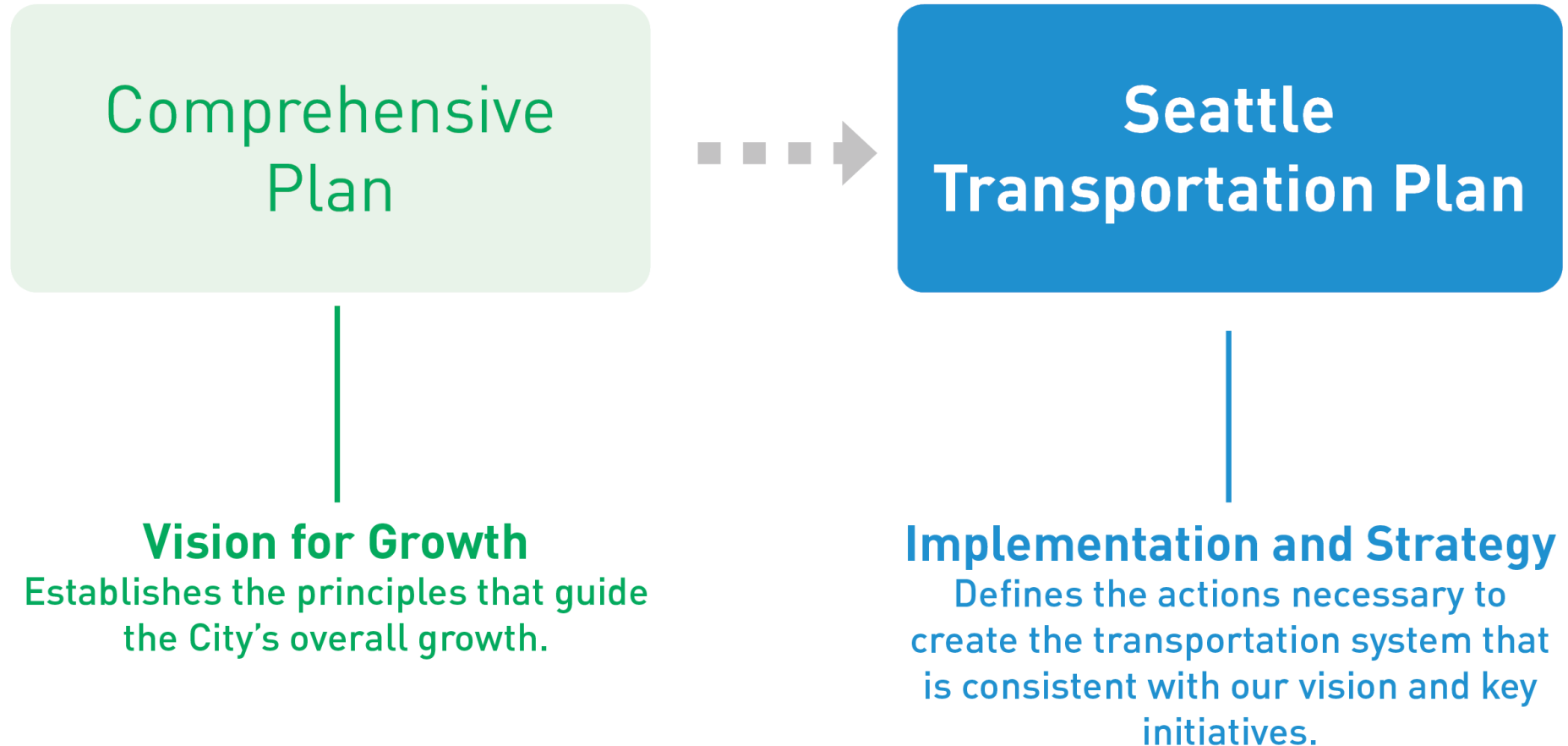
3

Phase 3

January - June 2023

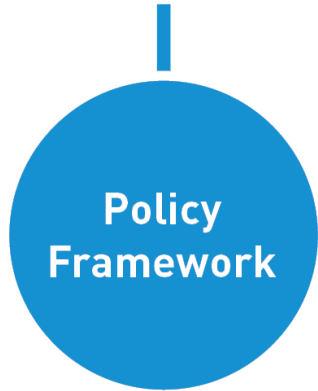
Review the draft plan

How does the STP relate to other plans?



What will be in the STP?

Evaluates current policies and suggests changes to align them with our values.



Performance Measures

Define targets and track our progress toward achieving the goals of the plan.

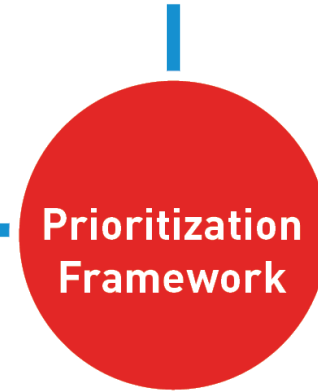
Identifies where we should build and improve our transportation system in Seattle.



Outline needs to implement projects and programs in the plan.

Program and Projects Needs

Prioritizes investment in Seattle's transportation system to address critical needs first.



Identifies actions and strategies to fund and implement the plan.

Funding Strategy

What's the Process?



What's Next?

Phase 1 Public Engagement (*May - Sep*)

- Review values and confirm priorities
- Public workshop (*Summer*)
- Joint workshop with advisory board members around transportation investments and tradeoffs (*May*)

Ongoing Technical Work

- Policy Framework & Performance Measures (*Now - June*)
- Network Integration & Scenario Evaluation (*Now - Dec*)



How Can I Learn More?



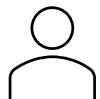
STP@seattle.gov



[\(206\) 257-2114](tel:(206)257-2114)



<https://www.seattle.gov/transportation/SeattleTransportationPlan>



Joanna Valencia and Jonathan Lewis (Project Managers)

Stay in touch:
Sign up on the
website to
subscribe for
project updates

