



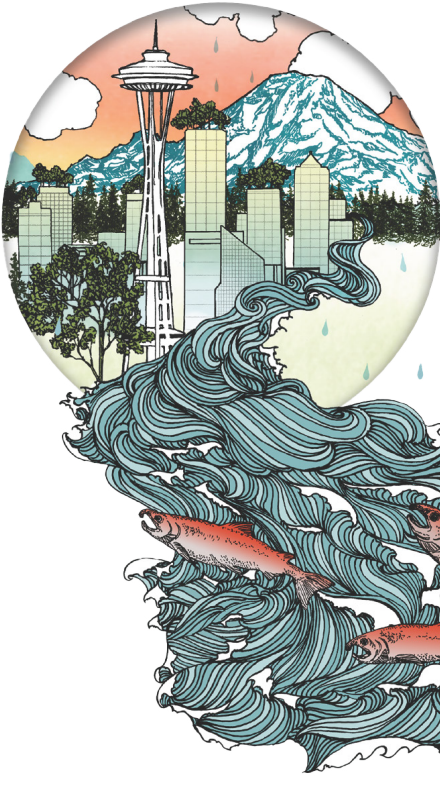
Seattle  
Public  
Utilities

September - October 2023

# AT YOUR SERVICE

Information about your drinking water, drainage, wastewater, and solid waste utility services.

## Working Every Day to Deliver Essential Services



Seattle Public Utilities (SPU) manages and maintains drinking water, sewers, drainage, and waste collection services for the Seattle area. Each year, we serve our community by:

Delivering **40+ billion** gallons of drinking water.

Maintaining **1,200+ miles** of sewer pipes and **1,000+ miles** of drainage ditches and pipes.

Coordinating **22+ million** pickups of household garbage, recycling, and compost.

Removing **5+ million** pounds of garbage and litter from public areas.

Offering **50+ programs** to engage, support, and partner with communities.

...and so much more!

### We Want to Hear From You!

We're engaging with communities throughout the area and we're seeking your input to help us better meet the needs of the customers we serve.

Visit [seattle.gov/utilities/community-survey](https://seattle.gov/utilities/community-survey) to share your feedback by Tuesday, October 31.



@Seattle\_Public\_Utilities



@SeattleSPU



@SeattlePublicUtilities

# Get Prepared for Wet Weather

[seattle.gov/utilities/weather](https://seattle.gov/utilities/weather)

SPU crews prepare for Seattle's wet weather by cleaning key parts of our drainage system, performing maintenance, and making needed repairs.

You can also prepare by raking leaves, which can be used as mulch in your garden or disposed of in your food and yard waste cart for composting.

Those who want to go the extra mile can join the many volunteers across the city who keep local storm drains clear of debris by volunteering with the Adopt a Drain Program ([seattle.gov/utilities/AdoptADrain](https://seattle.gov/utilities/AdoptADrain)).

If you have a lot of leaves, we've got you covered. Household customers can set out up to 10 bags of extra yard waste all November long for FREE! *(Please note the free service is only available to customers who are currently billed for regular food and yard waste collection.)*

Visit [seattle.gov/utilities/weather](https://seattle.gov/utilities/weather) to learn more about preparing for wet weather.

## Contact Us

**24/7 Emergency Services** (206) 386-1800  
(e.g. flooding, water leaks, sewer backups)

**Report Problems** (206) 684-7587 | [seattle.gov/finditfixitapp](https://seattle.gov/finditfixitapp)  
(e.g. graffiti, illegal dumping, needles)

**Customer Service** (206) 684-3000 M-F, 7:30am-6pm | [seattle.gov/utilities/emailus](https://seattle.gov/utilities/emailus)

FSC FPO

For interpretation services at no cost to you, please call (206) 684-3000.  
如需口譯服務請電 (206) 684-3000。

Para servicios de traducción, por favor, llame al (206) 684-3000.

Muốn yêu cầu dịch vụ thông dịch xin gọi số (206) 684-3000.

Wixii adeegyada turjubaanka fadlan wac (206) 684-3000.

ለትርጉም አገልግሎቶች፣ እስከዚህ ድረስ (206) 684-3000 ይደውሉ።

통역 서비스를 원하시면 (206) 684-3000 번으로 전화해 주십시오.

Para sa serbisyo ng tagapagpaliwanag, tumawag sa (206) 684-3000.

## You Can See and Help Steward Salmon This Fall



Each fall, when stream flows are naturally low, salmon make the long trek to spawn in streams and rivers across the Puget Sound region. Practicing water conservation and pollution-prevention helps salmon.

Each gallon of water we save helps keep water in our rivers and lakes to sustain salmon and wildlife. Even seemingly small daily actions can add up to make a big impact. For tips and resources to help you save water, visit [savingwater.org](https://savingwater.org).

Join us for opportunities to see and steward these amazing creatures in our own neighborhoods and watersheds.

## Salmon SEEs

### Carkeek Park Salmon Stewards

Join volunteer guides each Saturday and Sunday from November 4 – December 3, 11 a.m. – 2 p.m. More at:

[www.facebook.com/CarkeekParkSalmonStewards](https://www.facebook.com/CarkeekParkSalmonStewards)

### Other Viewing Opportunities

Learn about naturalist or self-guided salmon viewing locations around King County: <https://kingcounty.gov/see-salmon-safely>.