

# With the Brush!

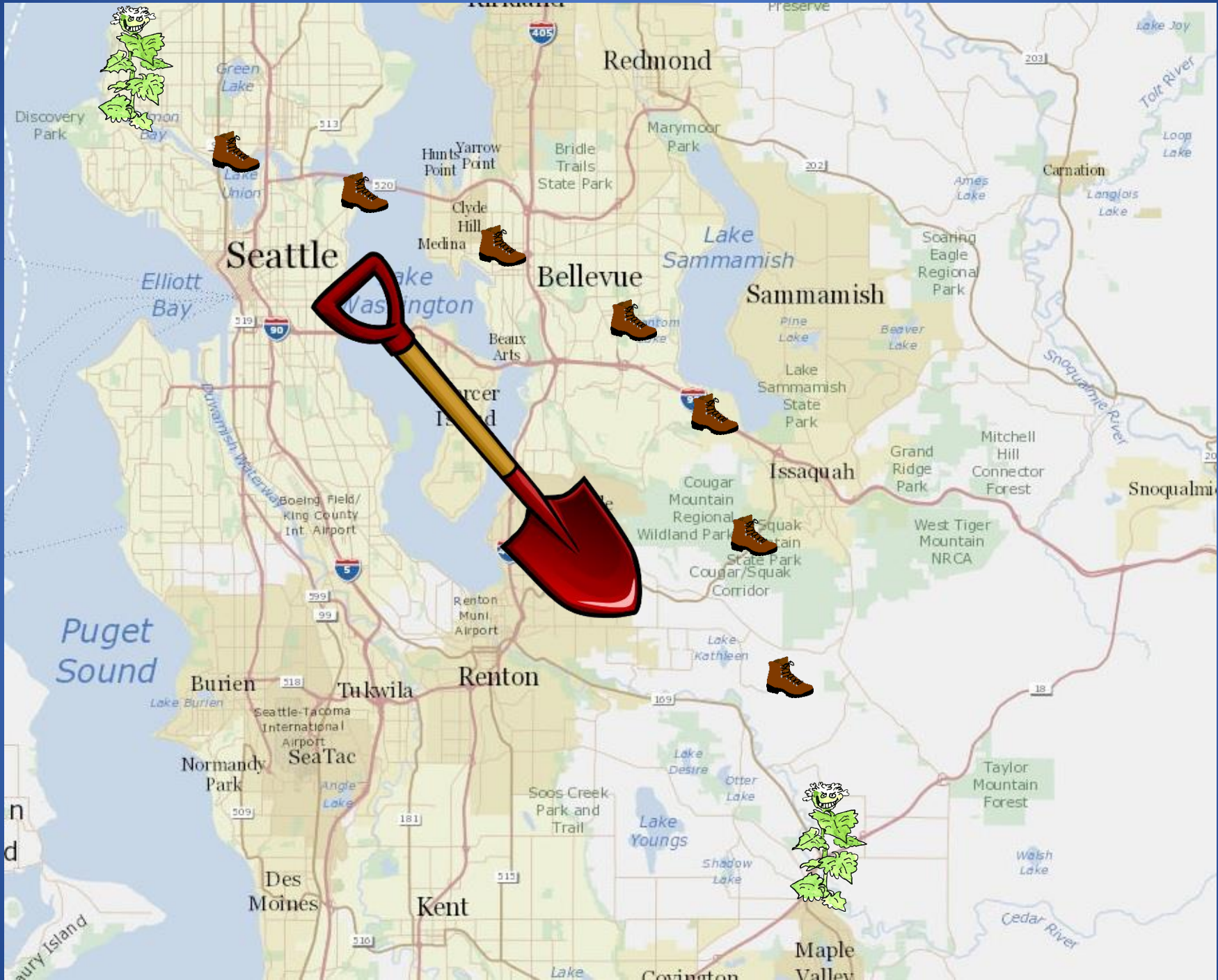


*Tips and tools for preventing the spread of  
invasive weeds*

*Learning from our mistakes*

Karen Peterson & Maria Winkler

King County Noxious Weed Control Program





Seeds



Boots



Weeds

Injected season before



# Weeds can hitchhike in nursery stock



# Weeds can hitchhike in nursery stock



# Weeds can hitchhike in mulch





On boots...



on tools...



on cars...

Seeds are sneaky!





# Communication breakdown



# Communication breakdown



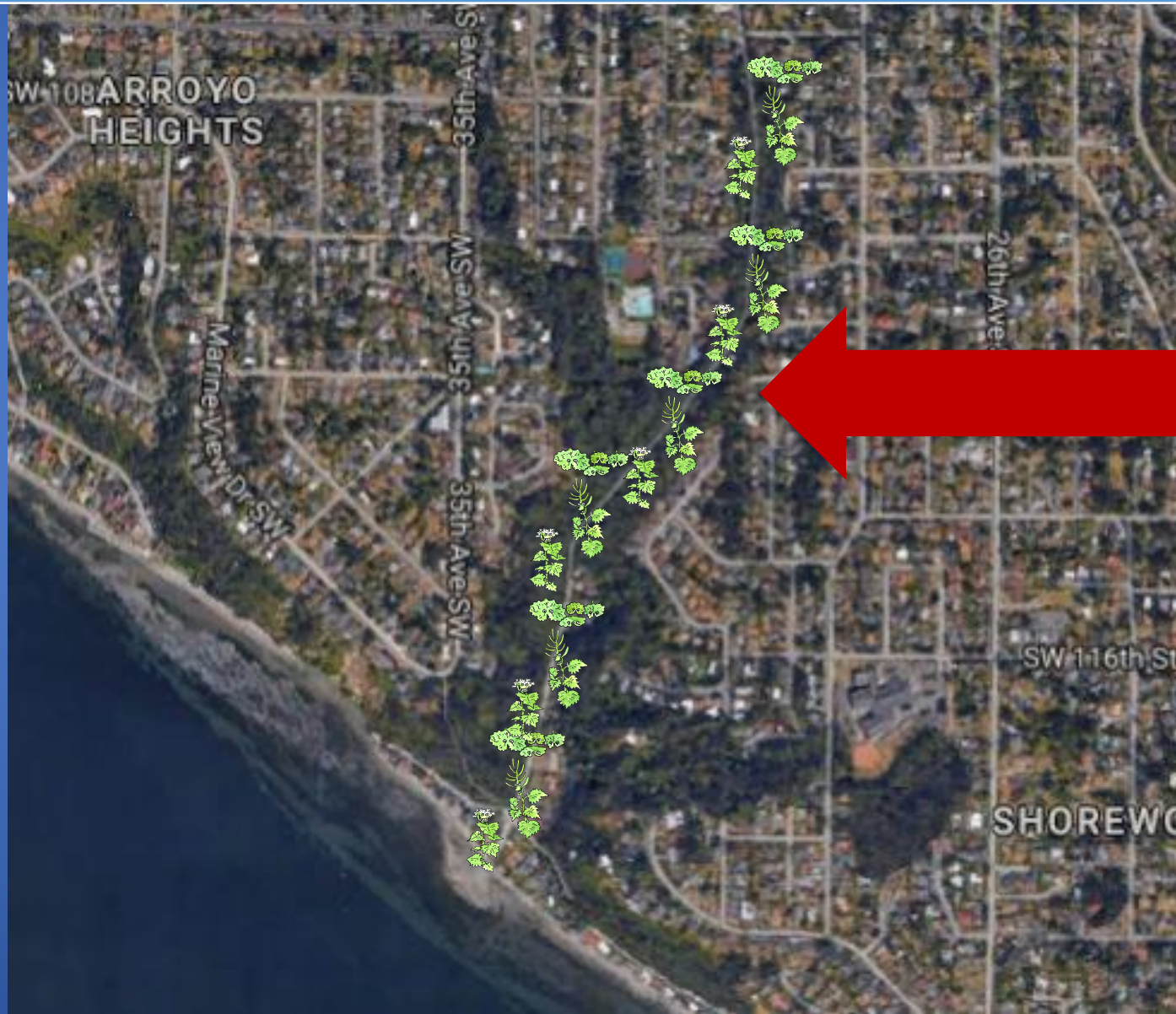
# Communication breakdown



See something, say something!



See something, say something!



~300,000  
sq. ft.

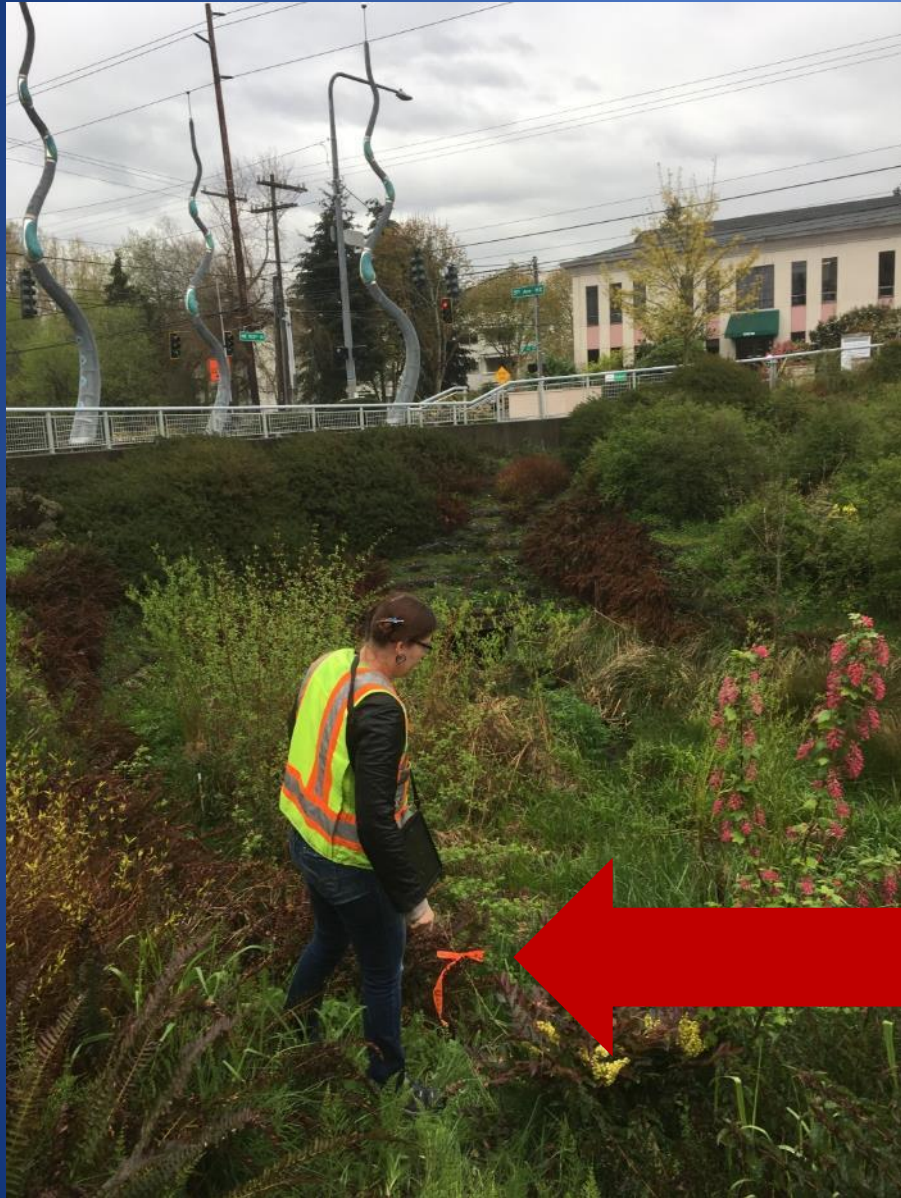
“An ounce of prevention is worth a pound of cure.”

- Benjamin Franklin



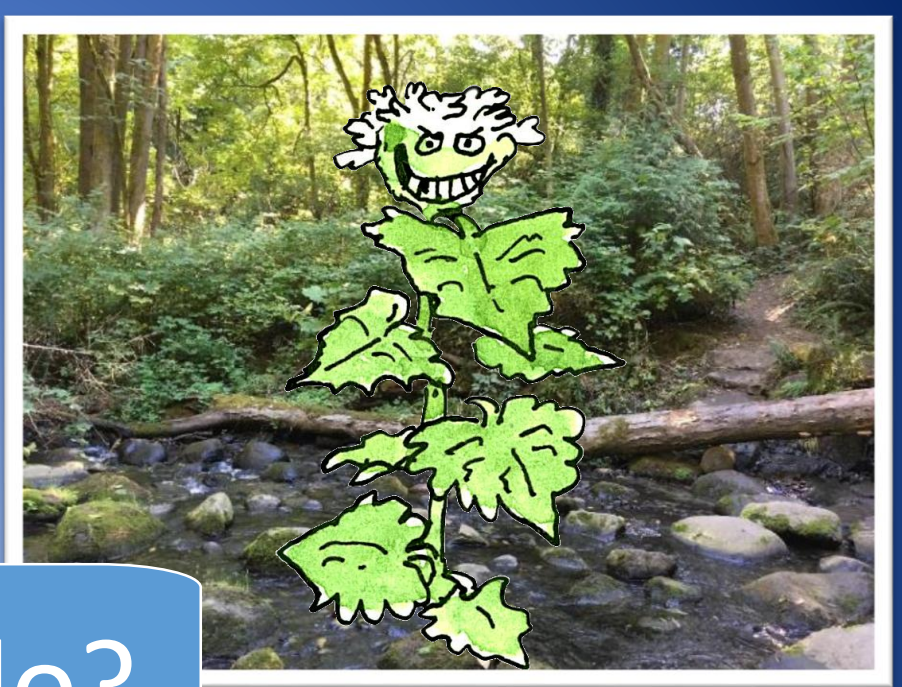
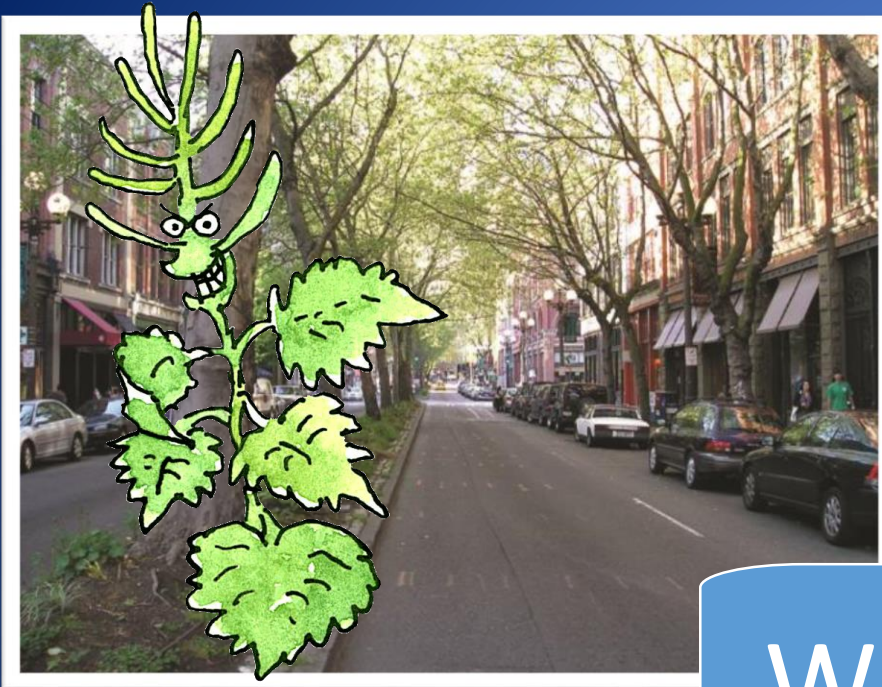






A person wearing a blue cap and a light-colored shirt is working in a field of tall green plants with small white flowers. The person is partially obscured by the dense vegetation. The background shows a wooded area with many trees.

\$95,000



What can we do?





+



=



Work

Clean

Fewer  
Seeds!

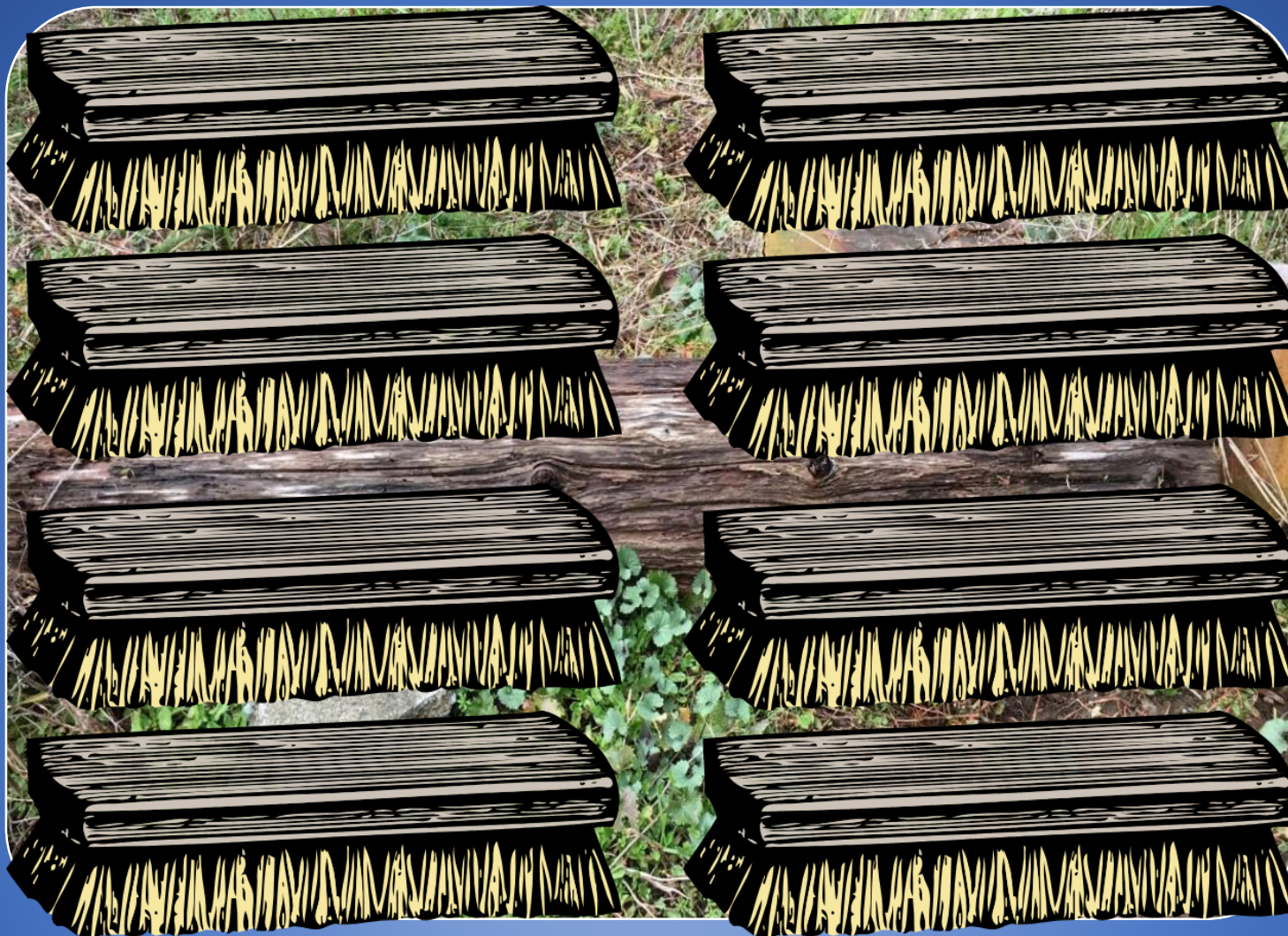












Brush your boots and tools in the same place every time





+



=



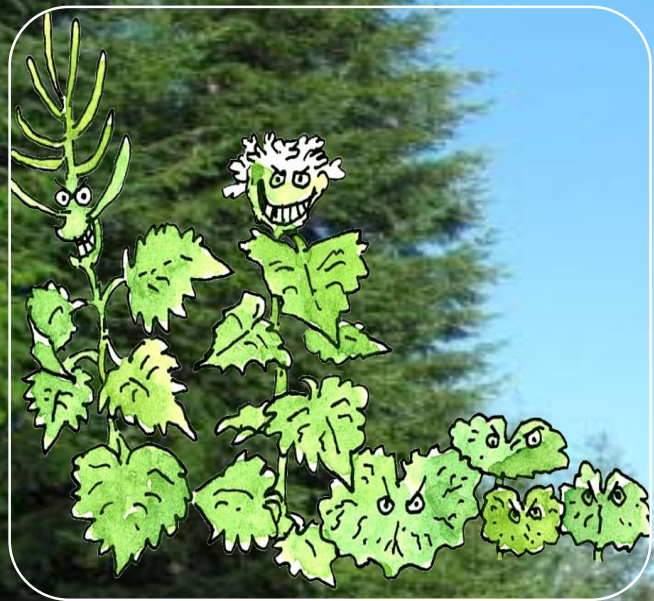
Equipment

Cleaning

Fewer  
Weeds!







-



=



Infestation

Traffic

Fewer Weeds!





**Trail**  
**Closed**

Have you seen this invasive plant?  
**Garlic Mustard**



**THE PROBLEM**  
Garlic Mustard is highly invasive and spreads rapidly in wooded areas. It has a strong garlic odor and produces white flowers in the spring. The plant is highly invasive and can outcompete native species.

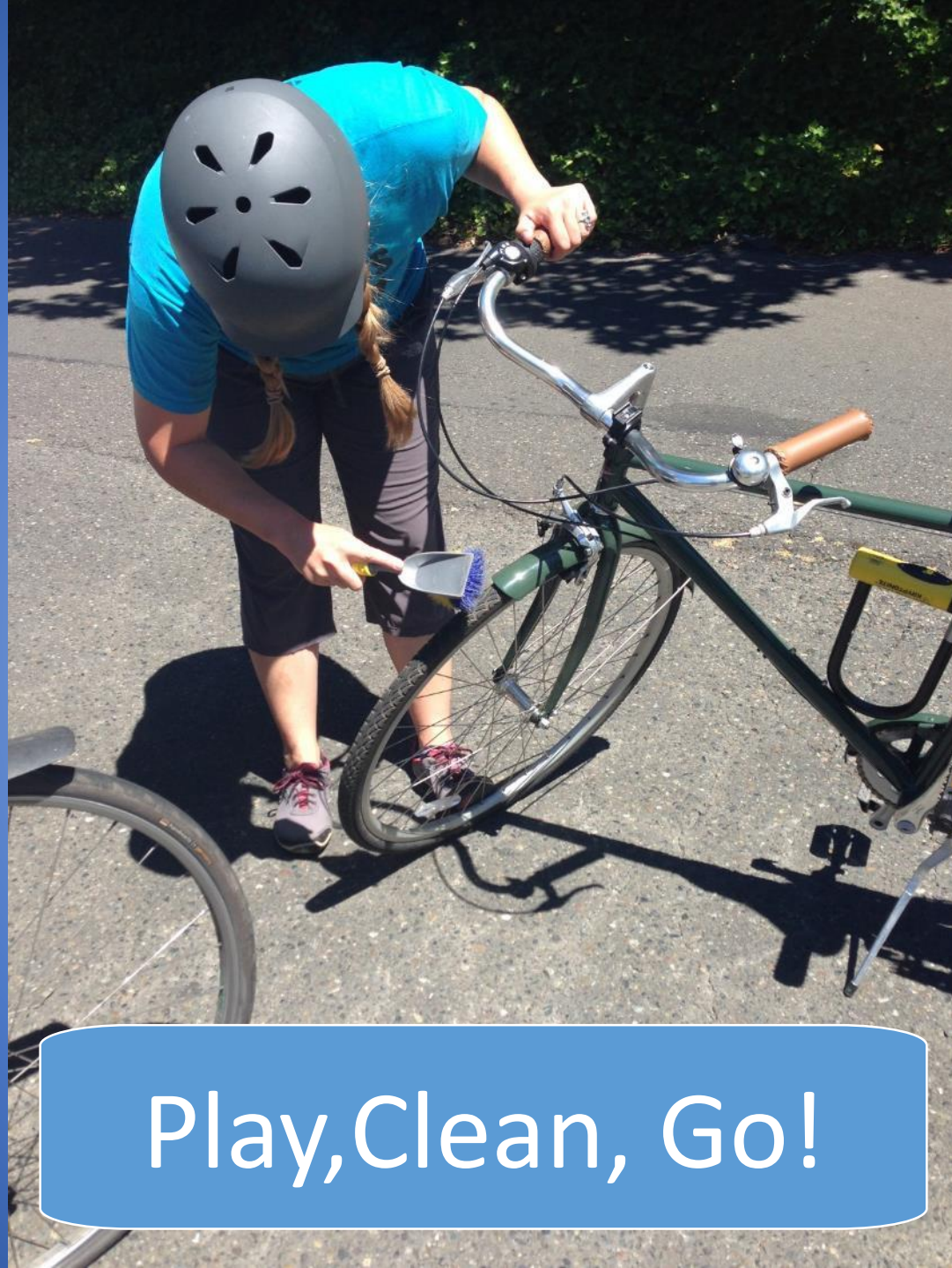
**REPORT SIGHTINGS TO:**  
King County Weeds Program  
206-296-0390  
www.kingcounty.gov/weeds

**Keep it out this autumn weed!**



Weed Free!



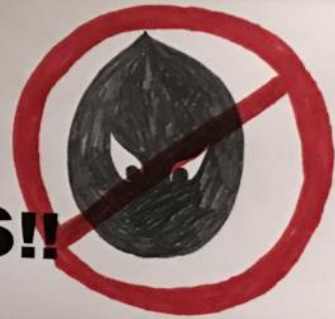


Play,Clean, Go!

[https://www.youtube.com/watch?v=L4\\_oq7aaaDo&feature=youtu.be](https://www.youtube.com/watch?v=L4_oq7aaaDo&feature=youtu.be)

How can we help you

**Brush boots!!**



make it a habit?

# Credits

1. Garlic mustard drawn by Jon Wagner -East Multnomah Soil & Water Conservation District
2. Angry Seed, drawn by Karen Peterson
3. Photos by:
  - Washington State Noxious Weed Control Board
  - Washington Conservation Corps
  - Matt Below, Roy Brunskill, Erin Haley, Karen Peterson, Maria Winkler – King County Noxious Weed Control
  - Michelle Delphine- West Multnomah Soil & Water Conservation District
  - Kyle Strauss- Strauss Ecological Services Inc.
5. PowerPoint animations and flow made possible by Nate Dolton-Thornton

Learn more, contact us!

[www.kingcounty.gov/weeds](http://www.kingcounty.gov/weeds)