

Seattle Department of Transportation

# HIGHLAND PARK WAY SW AND SW HOLDEN ST SAFETY PROJECT

## Outreach Summary



AUGUST 2020



**Seattle**  
Department of  
Transportation

VISION  
**ZERO**  
SAFER STREETS FOR SEATTLE

The Levy to  
**MOVE SEATTLE**  


# PROJECT OVERVIEW

Highland Park Way SW is a major north-south route in West Seattle, providing access to SR 99, SR 509, I-5, and the Duwamish Trail. The intersection at SW Holden St serves more than 22,000 drivers, transit riders, pedestrians and bicyclists daily.

In late 2018, SDOT improvements by updating the channelization with new painted areas to narrow vehicular lanes, remarked turn arrows and stop bars, and new yield and advance lane configuration signs.

On March 23, 2020, SDOT announced closure of the West Seattle High-Rise Bridge due to accelerated concrete cracking that was identified during a regular bridge inspection.

By the end of March, SDOT installed a temporary traffic signal at Highland Park Way SW & SW Holden St to manage the anticipated increase in traffic due to Highland Park Way SW being one of the key routes into and out of West Seattle.

SDOT will be making the temporary traffic signal permanent with concrete curb bulbs. Input received from the community through outreach will shape this project for all those who live in the Highland Park area.

The project is funded by Mercer Megablock proceeds and the Vision Zero program. Vision Zero is Seattle's plan towards zero traffic deaths and serious injuries on city streets by 2030.

## WHY IMPROVEMENTS ARE NEEDED

People using this intersection are confronted with several challenges. Sight lines, while currently acceptable, are constrained by the 11% uphill grade approaching the intersection.

This makes left turns from SW Holden St to Highland Park Way challenging when vehicular traffic is heavy during peak hours. During morning peak hour traffic, there is more demand than capacity for vehicular traffic. The demand is significant enough to cause eastbound traffic on SW Holden St to divert to non-arterial streets which creates safety issues in the neighborhood. The intersection also lacks standard pedestrian facilities like sidewalks and curb ramps.

Since 2013, the Highland Park community has made proposals for improvements at this intersection.

## PROJECT AREA



## PROPOSED IMPROVEMENTS

The original proposal was to install a new traffic signal with and rechannelize Highland Park Way SW to remove one northbound lane and install a new southbound protected bike lane. The rechannelization would address vehicular speeding on Highland Park Way SW.

Addressing the community concerns during outreach, the protected bike lane scope was replaced with widening the existing path along Highland Park Way SW to a shared use path accommodating pedestrians and bicyclists.



# OUTREACH OVERVIEW

Throughout 2020, we will be working with the community to identify common themes to inform project design and develop streets with enhanced connectivity, predictability, and safety for all travelers. Our outreach strategy strategically utilized available online communication tools to create accessible and transparent two-way communications with the public. In light of COVID-19, outreach was limited to virtual and did not include any in-person components. Outreach included online presentations, mailers, a webpage, and online survey.

The table below outlines outreach activities completed through July 2020:

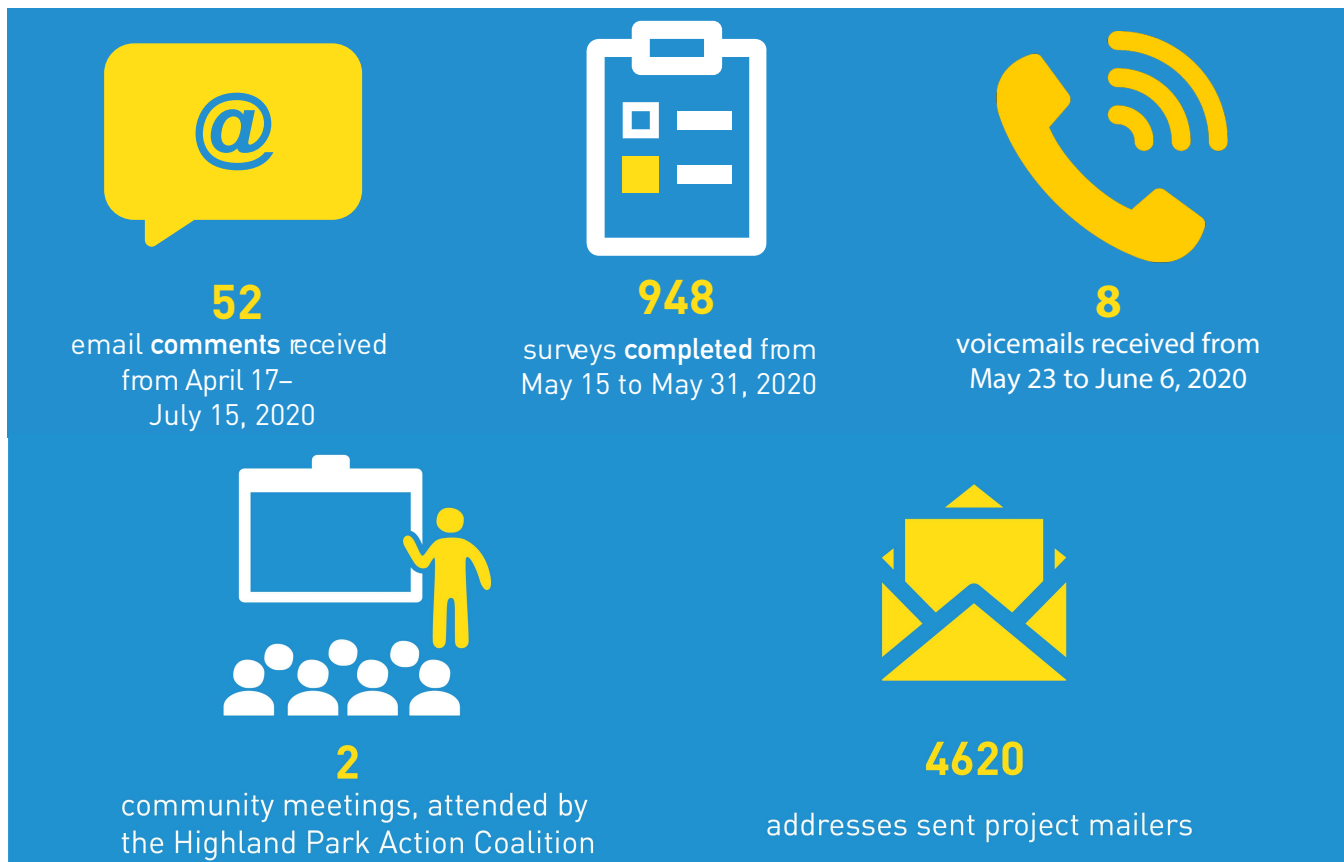
When	What	Details
March 2020	Project webpage	Project web page published live; provided project overview
March 22, 2020	Virtual meeting	Virtual meeting (via Zoom) hosted by the Highland Park Action Coalition to discuss community concerns and the West Seattle High Rise bridge closure
May 15, 2020	Recorded presentation and uploaded to project website	Provided project overview, preliminary design, and temporary improvement details
May 2020	Project mailer	Mailer introducing the project and engagement opportunities sent to residents
May 27, 2020	Virtual meeting	Virtual meeting (via Zoom) hosted by SDOT to present on the Highland Park Way Traffic Safety Improvement Project and Q&A
June 2020	Project Survey	Opportunity for public to provide feedback on early design proposals



# SURVEY SUMMARY

Our survey asked respondents to give feedback on proposed safety measures at SW Highland Park Way and SW Holden St. This survey was advertised on the project webpage and a mailer sent to project area residents in May 2020 invited the public to take the survey. The survey was open from May 15 to May 31. In total, 948 people responded to the survey. The following pages detail their responses.

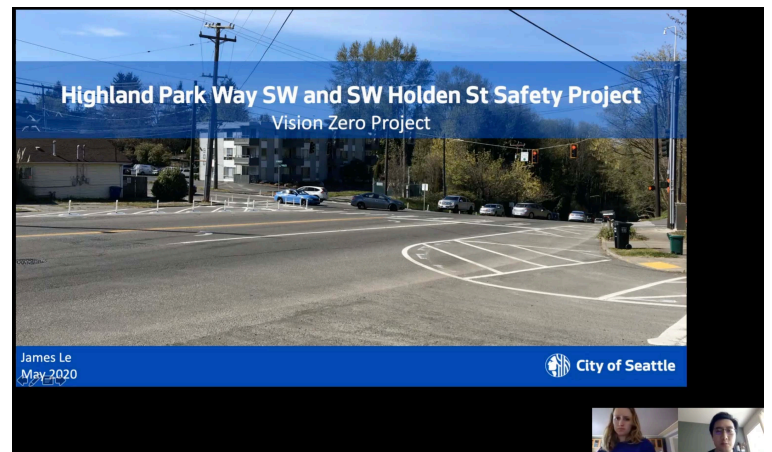
## BY THE NUMBERS



# WHAT WE HEARD

The following comments represent the most vocalized and common themes gathered during all phases of outreach:

- 267 opposed the proposed bike lane if it would remove vehicle travel lanes, while 24 liked the addition of bike lanes
  - A large portion of respondents felt that a reduction in travel lanes would be detrimental to West Seattle, particularly as the West Seattle Bridge is closed and there are few travel options for West Seattle residents
  - Many suggested alternative locations for a bike lane, including:
    - Widening the sidewalk to fit a bike lane without taking away a travel lane
    - Through the Duwamish Greenbelt
    - Along the lower bridge
  - Many noted that there was little bicycle traffic along this route and that the steepness of the hill made this route unattractive to bikers
- 78 were particularly concerned about traffic flow in general noting that
  - Traffic was already frequently backed up and could worsen post-COVID
  - Closure of the WSB has push additional stress on the corridor



- **59 noted the need for additional turn signals, turn lanes, and/or other turn markings, particularly at:**
  - 16th and Holden
  - 9th/Highland Park and Holden
  - Highland Park heading to I5/509
  - Delridge and Orchard
- 40 mentioned the need for traffic calming measures or speed limit enforcement
  - This is a particularly large need for traffic calming in side streets connecting to Highland Park Way or Holden St
    - SW Portland St
    - 11th Ave SW
    - SW Othello St
    - 13th Ave SW
    - 12th Ave SW
    - SW Kenyon St
  - Speeding along Holden, Highland Park, and 16th, especially when traveling downhill
  - Speed limits are not enforced
  - 11 people did not like speed limits

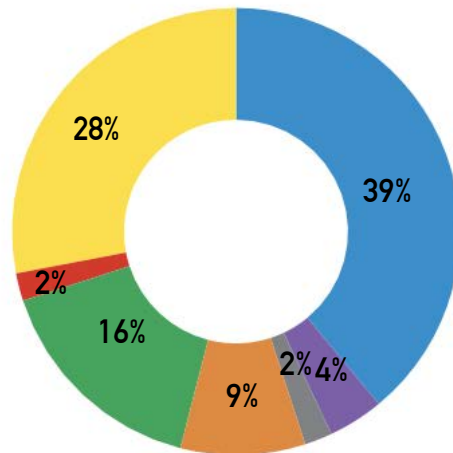
- 33 expressed opinions on traffic lights. Many believed the temporary traffic signal at Holden and Highland Park to be helpful, but a handful noted caveats
  - Steepness of hills made it difficult for larger vehicles to stop
  - A traffic circle could be a preferable alternative
  - SDOT should consider traffic signals at:
    - 9th and Henderson
    - 21st and Delridge
- 17 noted the need for additional pedestrian improvements, including additional crossings and repaving of the existing sidewalk
- 11 expressed desire for better separation of travel lanes going uphill and downhill for safety
- 10 noted the need for better maintenance of the area
  - Folks noted that uncut grass reduced visibility at intersections and was a hazard



## SURVEY RESULTS - PROJECT RELATIONSHIP

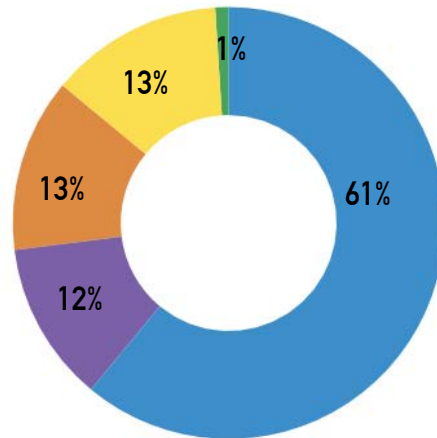
How would you describe your primary connection(s) to the project area? Check all that apply.

- I live in the Highland Park area.
- I work in the Highland Park area.
- I go to school/training in the Highland Park area.
- I use public transit through the Highland Park area.
- I visit businesses in the Highland Park area.
- I own a business in the Highland Park area.
- Other



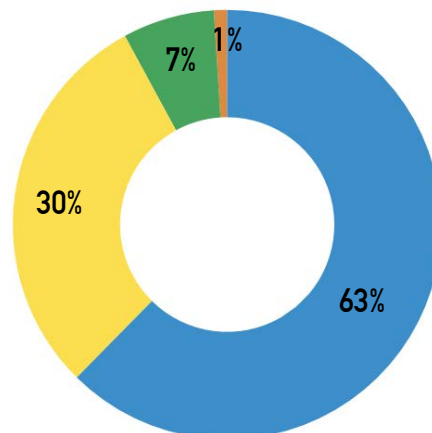
What modes of transportation do you use on the project corridor? Check all that apply.

- Driving
- Bicycling
- Walking or rolling
- Riding transit
- Other



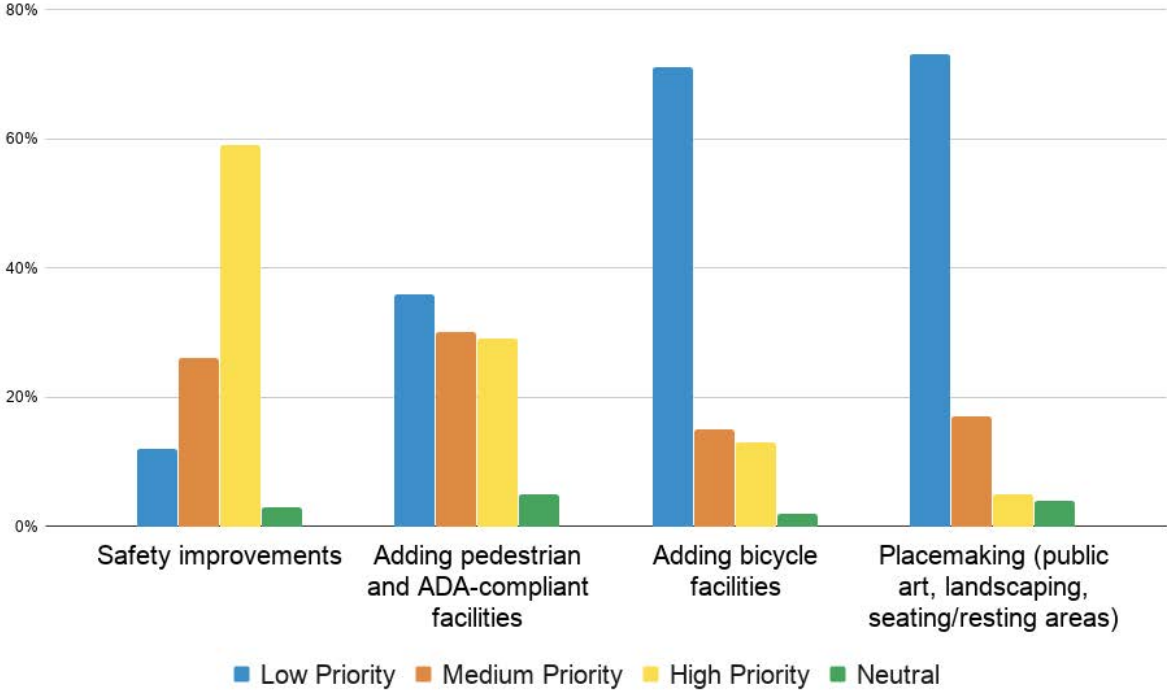
How frequently do you travel through the project area?

- Daily
- A few times each week.
- A few times each month.
- Rarely or never.

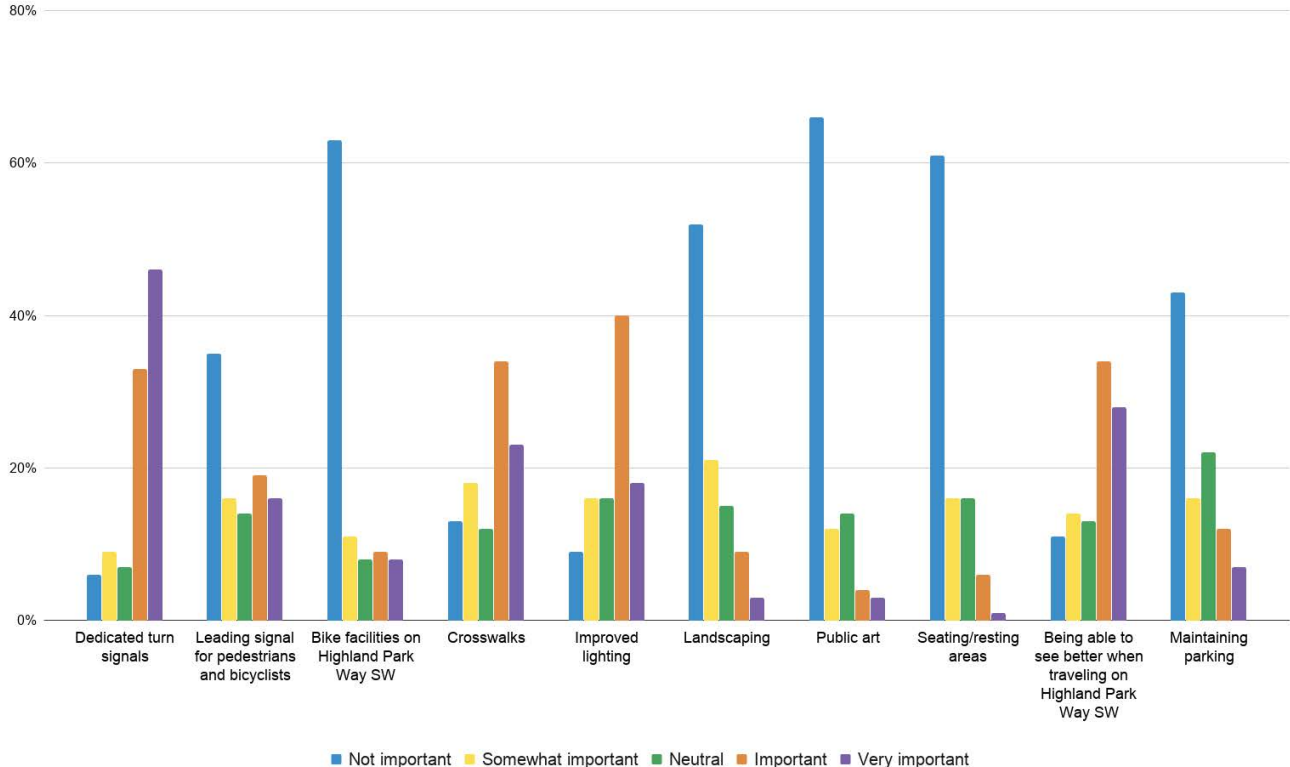


# SURVEY RESULTS - CONCERNS AND PREFERRED UPGRADES

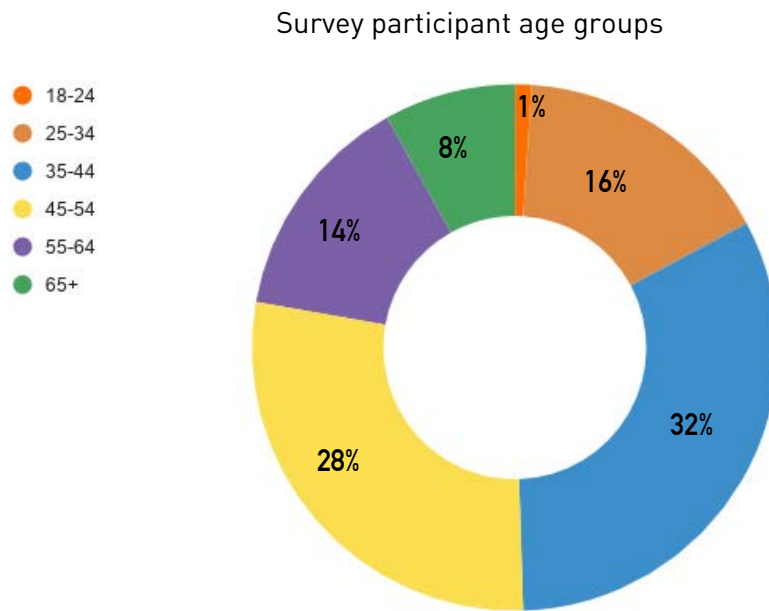
How would you prioritize the proposed improvements to Highland Park Way SW and SW Holden St?



How would you rank the importance of the proposed improvements to Highland Park Way SW and SW Holden St?



## WHO WERE THE SURVEY PARTICIPANTS?







P.O. Box 34996  
Seattle, WA 98124-4996

PRSRT STD  
US Postage  
PAID  
Seattle, WA  
Permit No. 2871

## HIGHLAND PARK WAY SW AND SW HOLDEN ST SAFETY PROJECT

Share your input on proposed improvements including a permanent signalized intersection at Highland Park Way SW and SW Holden St.

### Share Your Input

Phone: 206-900-8741  
Email: [HighlandHolden@seattle.gov](mailto:HighlandHolden@seattle.gov)  
Survey: [www.surveymonkey.com/r/HighlandHolden](http://www.surveymonkey.com/r/HighlandHolden)

Compártanos su opinión y sugerencias sobre las mejoras a la seguridad que habrá en el área de Highland Park. Para traducciones, llame al: (206) 727-8697

## HIGHLAND PARK WAY SW AND SW HOLDEN ST SAFETY PROJECT

### New traffic signal, protected bike lane, curb bulbs

#### OVERVIEW

Highland Park Way SW is a major north-south route in West Seattle, providing access to SR 99, SR 509, I-5, and the Duwamish Trail. The intersection at SW Holden St serves more than 22,000 drivers, transit riders, pedestrians and bicyclists daily.

#### WHY IMPROVEMENTS ARE NEEDED

The Highland Park Way SW and SW Holden St intersection has been the site of several crashes and issues due to poor sight distances, high speeds, travel lane confusion, and a lack of pedestrian facilities.

#### IMPROVEMENTS BEING CONSIDERED

This project is in the early stage of design, around 10%, and community input will help shape future design. SDOT staff will also take into account new traffic volumes with the closure of the West Seattle Bridge and restrictions on the Low Bridge (Spokane Street Bridge).

Proposed improvements at this early design stage include:

- A permanent signalized intersection with concrete curb bulbs and sidewalks
- Protected bike lane between SW Holden St and W Marginal Way
- Several additional safety improvements throughout the neighborhood

#### SHARE YOUR INPUT

SDOT is in the early design stage of permanent improvements at the Highland Park Way SW and SW Holden Street intersection. These improvements are shown in the graphic on the opposite side of this mailer. A video further describing the improvements can be found on our project webpage: [www.seattle.gov/transportation/HighlandParkSafety](http://www.seattle.gov/transportation/HighlandParkSafety)

#### STAY INFORMED

Sign up for email updates on our project website: [www.seattle.gov/transportation/HighlandParkSafety](http://www.seattle.gov/transportation/HighlandParkSafety)

This project is funded by the 9-year Levy to Move Seattle, approved by voters in 2015. Learn more about the levy at [www.seattle.gov/LevytoMoveSeattle](http://www.seattle.gov/LevytoMoveSeattle).



### TEMPORARY SIGNAL INSTALLED IN EARLY APRIL 2020

To help manage traffic during the emergency closure of the West Seattle Bridge, a temporary signal was installed at Highland Park Way SW and SW Holden Street. SDOT is continuing to plan for the permanent safety improvements project while the temporary signal remains in place.



## HIGHLAND PARK WAY SW AND SW HOLDEN ST SAFETY PROJECT

Share your input on proposed improvements including a permanent signalized intersection at Highland Park Way SW and SW Holden St.

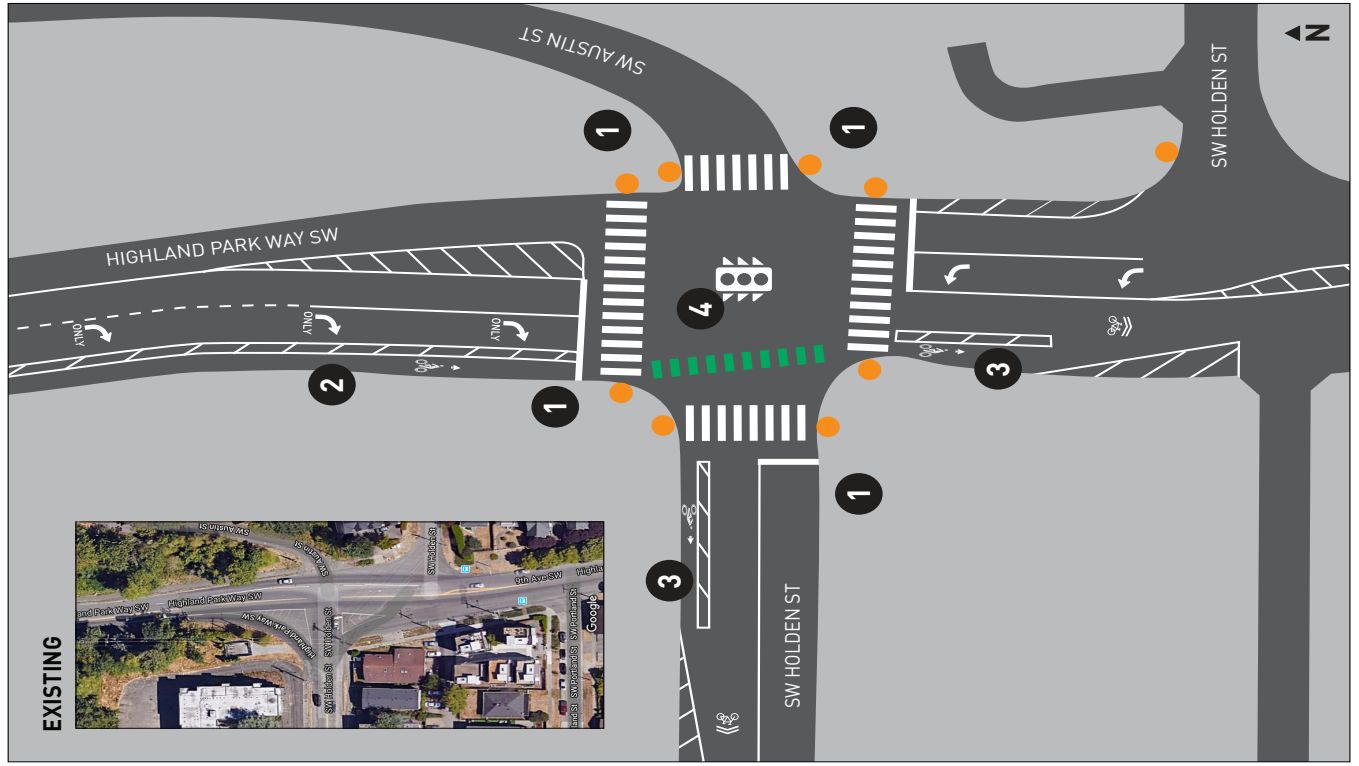


Seattle Department of Transportation



## PROPOSED IMPROVEMENTS AT HIGHLAND PARK WAY AND SW HOLDEN STREET

The graphic below shows proposed improvements near the intersection of Highland Park Way SW and SW Holden Street. A video further describing the improvements can be found on our project webpage: [www.seattle.gov/transportation/HighlandParkSafety](http://www.seattle.gov/transportation/HighlandParkSafety)



This project is in the early stage of design, around 10%, and community input will help shape future design. SDOT staff will also take into account new traffic volumes with the closure of the West Seattle Bridge and restrictions on the Low Bridge (Spokane Street Bridge).

- 1** Landscaping opportunities
- 2** Southbound uphill protected bike lane to West Marginal Way
- 3** Protected bike lane
- 4** Upgrade to 4-way signal with bike phase
- All corners rebuilt with ramps
- ▬ New crosswalk
- ▬ Separate bike crossing

## SHARE YOUR INPUT

Share your input on these proposed changes to the Highland Park area.

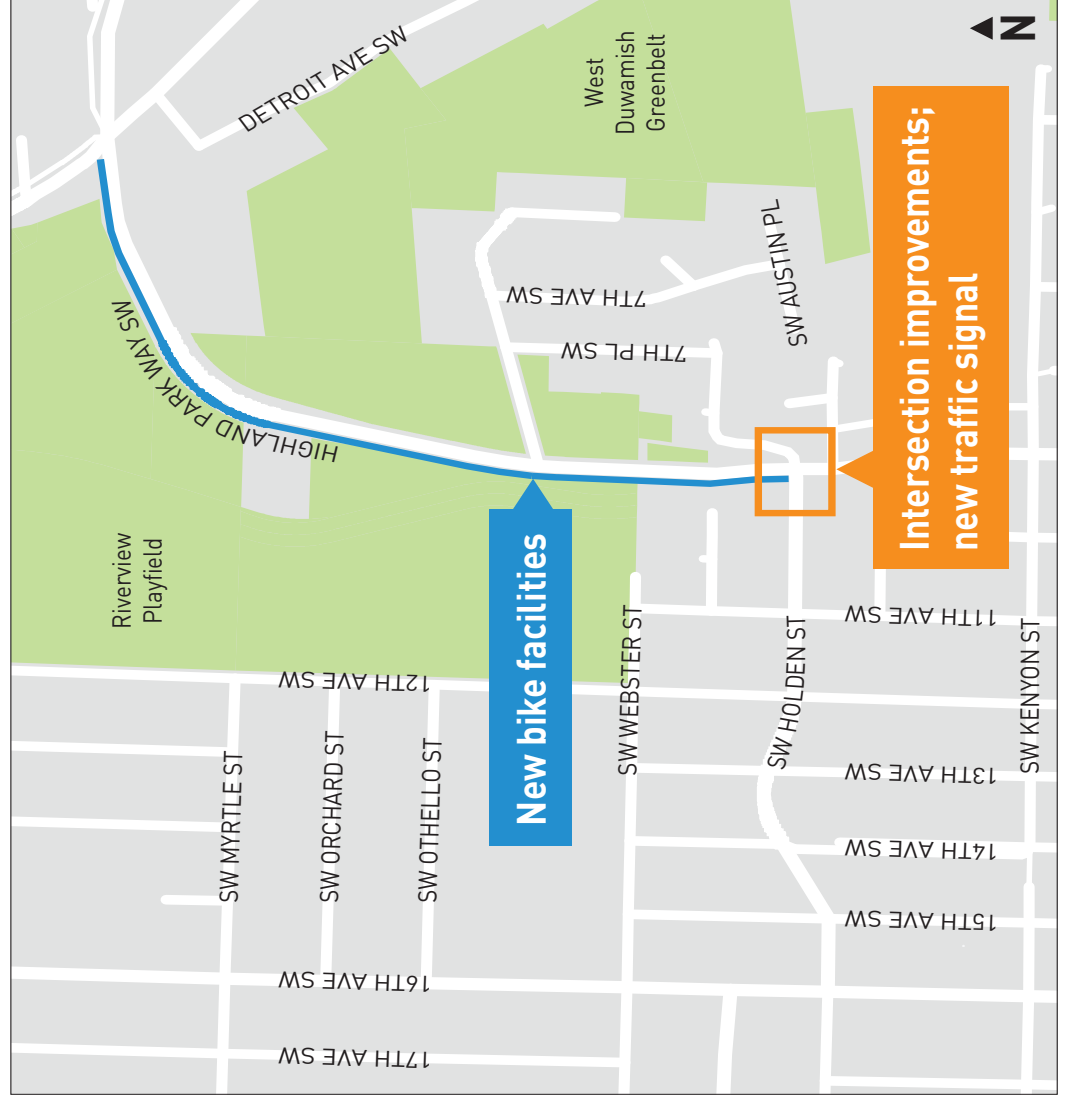
**Phone:** 206-900-8741

**Email:** [HighlandHolden@seattle.gov](mailto:HighlandHolden@seattle.gov)

**Survey:** [www.surveymonkey.com/r/HighlandHolden](http://www.surveymonkey.com/r/HighlandHolden)

Compártanos su opinión y sugerencias sobre las mejoras a la seguridad que habrá en el área de Highland Park. Para traducciones, llame al: (206) 727-8697

## PROJECT AREA (10% PLANS)



The Seattle Department of Transportation  
700 5th Avenue, Suite 3800  
PO Box 34996  
Seattle, WA 98124-4996  
(206) 684-ROAD (7623)  
[www.seattle.gov/transportation](http://www.seattle.gov/transportation)



**Seattle**  
Department of  
Transportation

8.2020