

Highland Park Action Coalition Meeting

Heather Marx, James Le

May 27, 2020



City of Seattle

Agenda

West Seattle Bridge (*~10 minutes*)

- Project update
- Neighborhood mobility planning
- Q&A (*~10 minutes*)

Highland Park Way SW and SW Holden St Safety Project (*~15 minutes*)

- Early design overview
- Q&A and input from neighbors (*~15 minutes*)

West Seattle Bridge Update

Heather Marx
May 27, 2020

What has changed since March 23, 2020

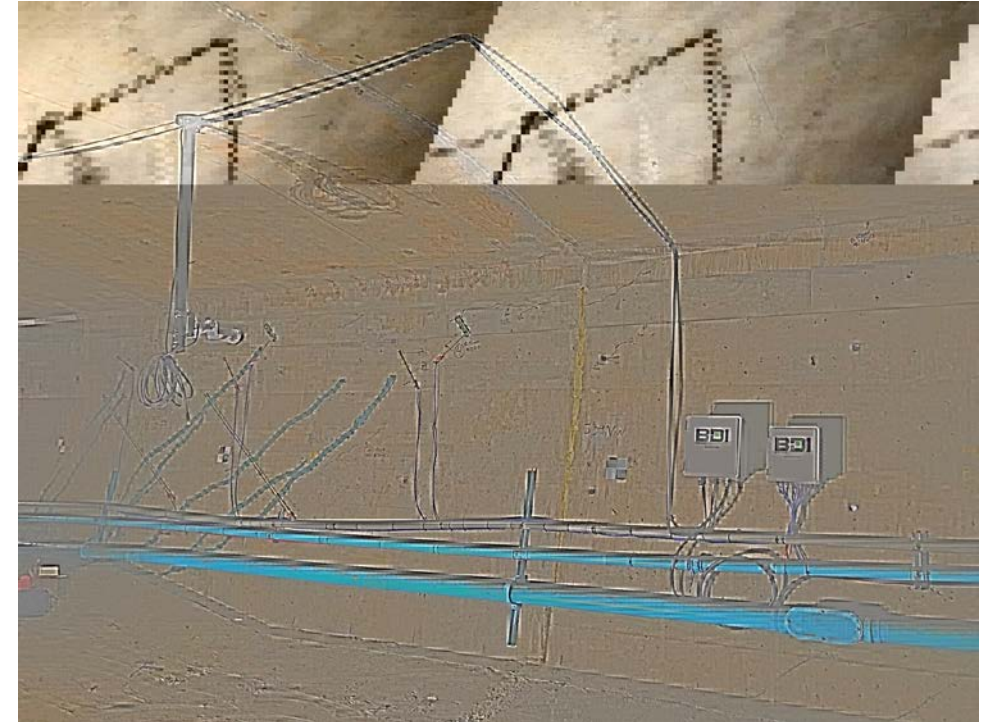
- Future of the bridge remains uncertain
- Making progress on determining bridge repair or replacement
- Committed to clear communication and transparency throughout



What we've done since the closure

On the Bridge

- Installed monitoring instrumentation
- Secured a contractor to complete bridge stabilization
- Continuing to monitor cracking
- Pier 18 repair construction planning



What we've done since the closure

On the Ground

- Added six real-time cameras on detours
- Adjusted signal timing at 26 intersections
- Installed three dynamic message signs to display travel times via West Marginal Way
- Installed a temporary signal at Highland Park Way SW and SW Holden St
- Repaved the 5-way intersection west of the Spokane Street/Low Bridge

What we've done since the closure

In the Community

- Held 20+ stakeholder group meetings
- Completed our emergency response plan with partners
- Communicated regularly through our website, blog, emails lists, and media
- Implemented Stay Healthy Streets



What's next

- Repaving Roxbury between 16th and 18th Avenue (May 28 & 29)
- West Marginal Way improvements
- Ongoing signal adjustments along detour route
- Preparing for Pier 18 work
- Initial meeting of Community Task Force and Technical Advisory Panel
- Continued meetings with neighborhoods, organizations, stakeholders

Community Task Force and Advisory Panel

West Seattle Bridge Community Task Force

- Approximately 40 individuals
- Includes elected officials and representatives from West Seattle Businesses, regional neighborhood groups, industrial and maritime businesses

Technical Advisory Panel

- Composed of independent experts with leading experience in bridge design and construction (particularly concrete construction), geotechnical engineering for bridge structures, and marine/maritime expertise.
- Will be convened at key milestones in the process



West Seattle Bridge - Neighborhood Mitigation Strategies

- List of ideas generated from you, SDOT staff, and existing transportation and neighborhood plans (i.e. Bike Master Plan, Transit Master Plan, Freight Master Plan)
- Focus on “Quick build” projects that could be implemented in less than one year
- Cost for each project is approximately or less than \$100K
- Neighborhood priorities needed to inform traffic mitigation commitments

West Seattle Bridge - Neighborhood Mitigation Strategies

- **Week of June 8:** Share with community
- **Week of July 2:** Community provides prioritized list to City
- **Week of July 17:** City folds community priorities into mitigation plans
- **Late July:** Follow-up discussions with neighborhoods
- **August:** Action plan and timeline set

Actions you can take

Visit West Seattle Bridge Website

- seattle.gov/transportation/westseattlebridge
- Click "Subscribe Now" button to get email updates about the bridge
- Browse reroute maps, FAQs, in-depth stories about the bridge and action plans, and more

Ask Questions

- 684-ROAD@seattle.gov
- 206-684-ROAD
- **Sign Up for AlertSeattle**
 - alert.seattle.gov
- **Start Planning for Post “Stay Home, Stay Healthy”**
- **Encourage Others to Follow Low Bridge Restrictions**

Questions / Discussion

Director of Downtown Mobility, Heather Marx

www.seattle.gov/transportation/WestSeattleBridge



Parameters around the capital project and bridge-related projects

Highland Park Way SW and SW Holden St Safety Project

- Location specific
- Fully funded and scheduled to start construction in 2021
- Improvements at intersection and bicycle facility to West Marginal Way
 - Traffic signal, not roundabout

West Seattle Bridge Neighborhood Mitigation Strategies

- Area includes Highland Park, Roxhill, South Delridge, and Riverview
- In planning stage
- Community will prioritize list
- Improvements
 - \$100K or less each
 - Can be completed in less than 12 months

Highland Park Way SW and SW Holden St Safety Project

James Le

May 27, 2020

Project goals

- Improve safety for **ALL**
- Identify neighborhood traffic issues
- Make traffic signal at Highland/Holden **permanent** with new curbs and sidewalks
- Provide bicycle facility between Duwamish Trail and Highland Park
- Opportunities for public input



Background

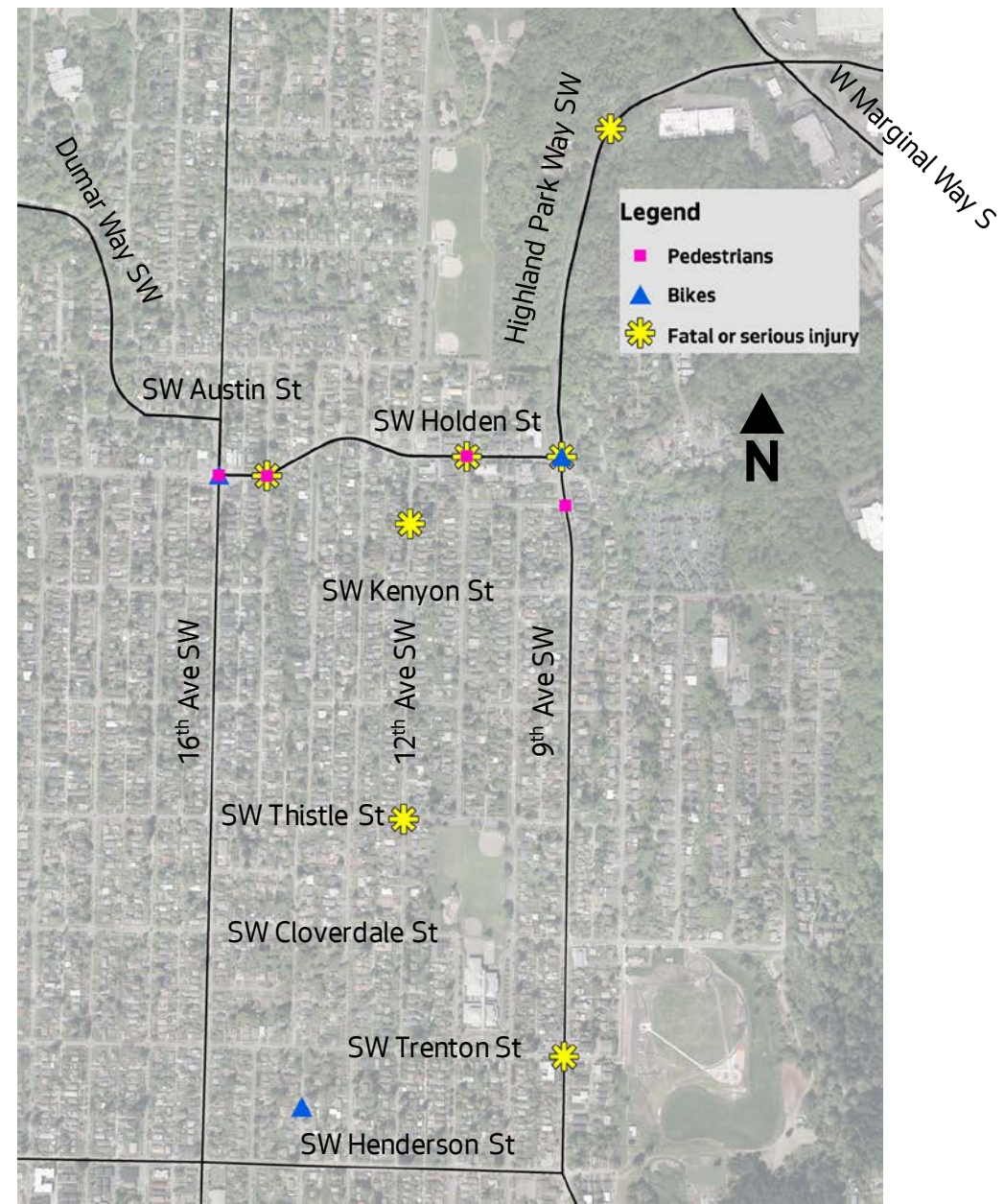
- Major route into/out of West Seattle
- +20,000 people walking/rolling, biking, and driving through intersection every day
- Sightline issues (11% grade)
- Serves Metro route #131
- Multi-use path east side of Highland Park Way SW
- Funded by Mercer Megablock proceeds and Move Seattle



Temporary traffic signal at Highland/Holden installed April 2020

Crashes

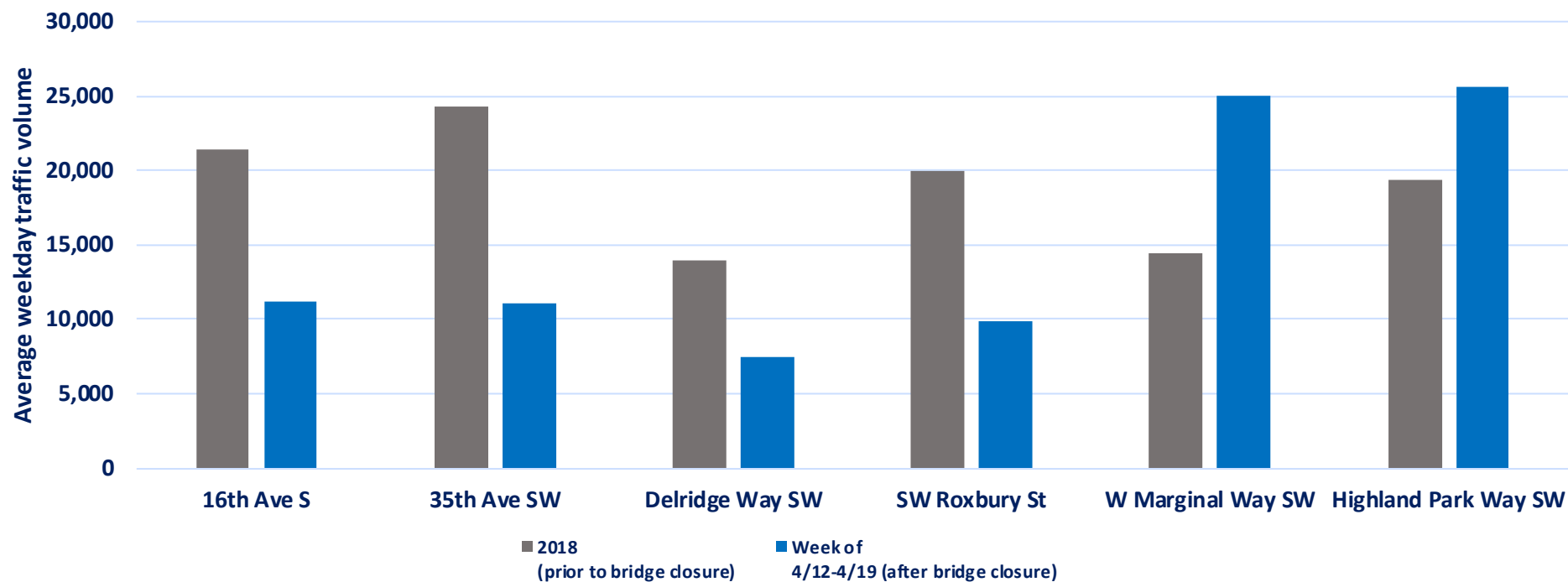
- **195 total crashes** within the last 5 years (2015-2019)
 - 4 pedestrian
 - 3 bicycle
 - 6 serious injury
 - 1 fatal



Traffic volumes

Traffic volumes along Highland Park Way SW and W Marginal Way SW have increased since bridge closure

West Seattle traffic volumes before/after bridge closure



Speeds

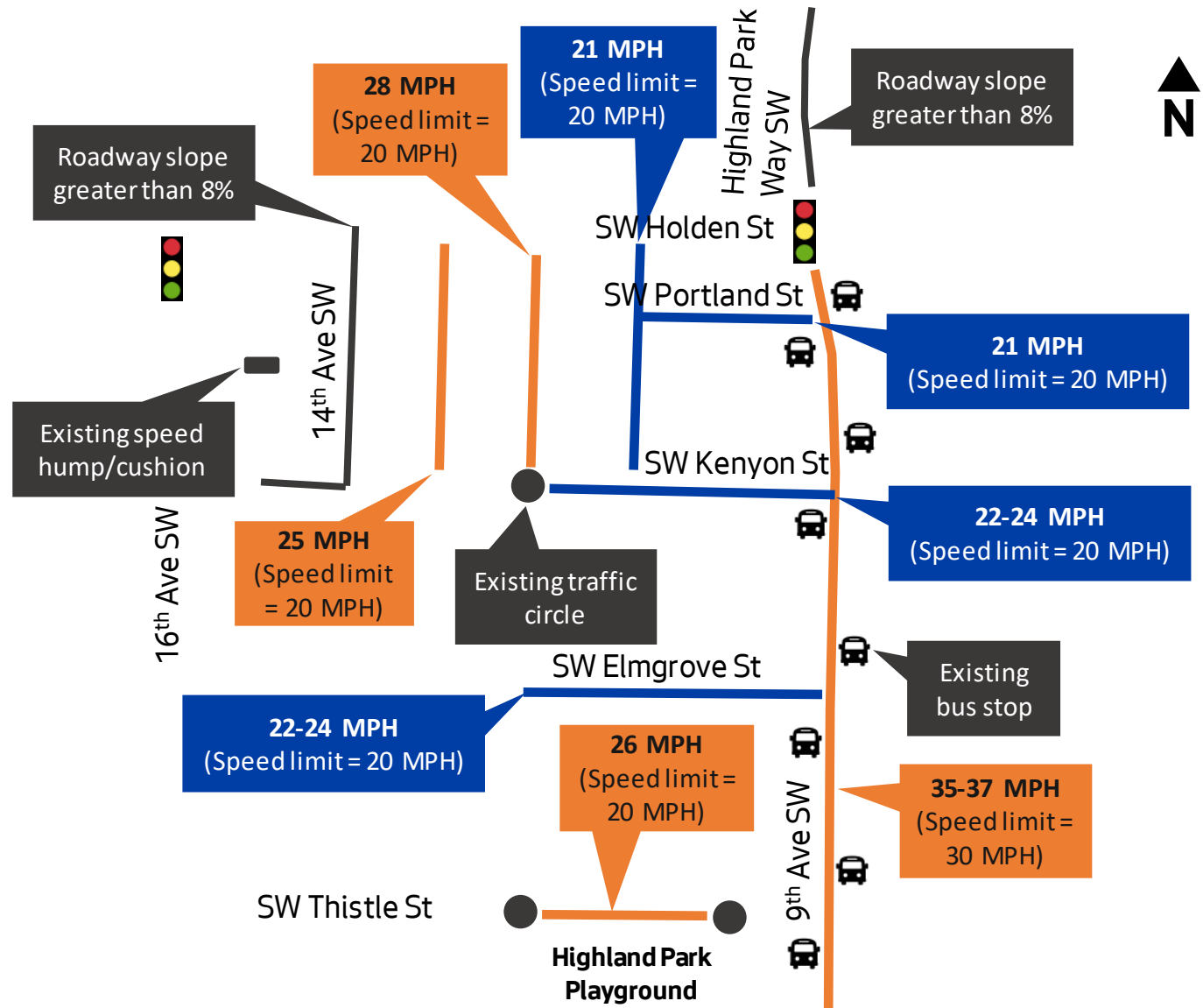
- Recent speed studies were collected December 2019
- Speed cushions/humps can reduce vehicular speeds
 - May impact emergency response
 - May increase noise levels
 - Not installed where roadway slope is greater than 8%
 - Typically installed where vehicular speeds are +5 mph over speed limit



Speed cushions near 16th Ave SW/SW Myrtle St for Sanislo Elementary School (“Your Voice, Your Choice” and Safe Routes to School)

Speeds

- Vehicles are traveling +5 mph over speed limit for segments shown in **orange** - speed hump/cushions will be installed
- Vehicles are traveling less than 5 mph over speed limit for segments in **blue**



See next slide for Highland Park south

Speeds

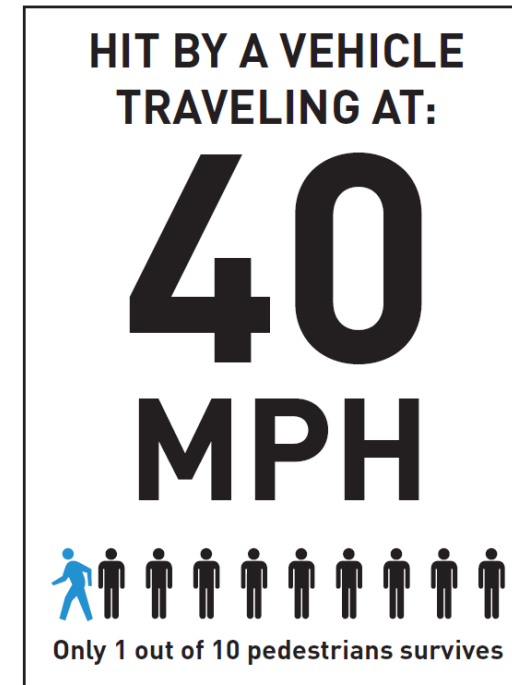
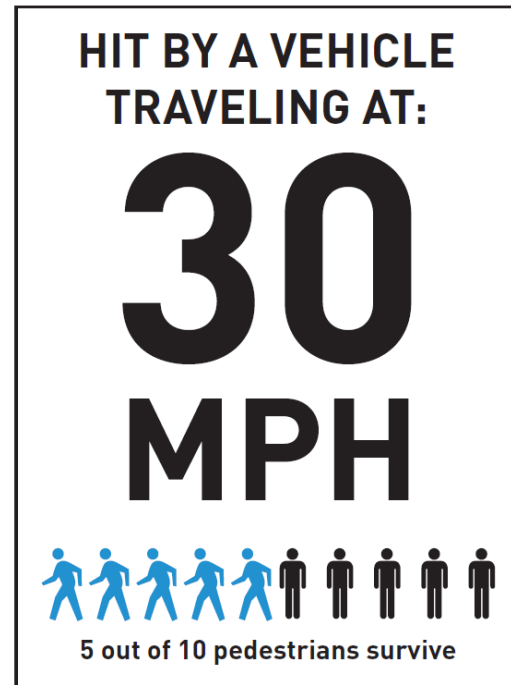
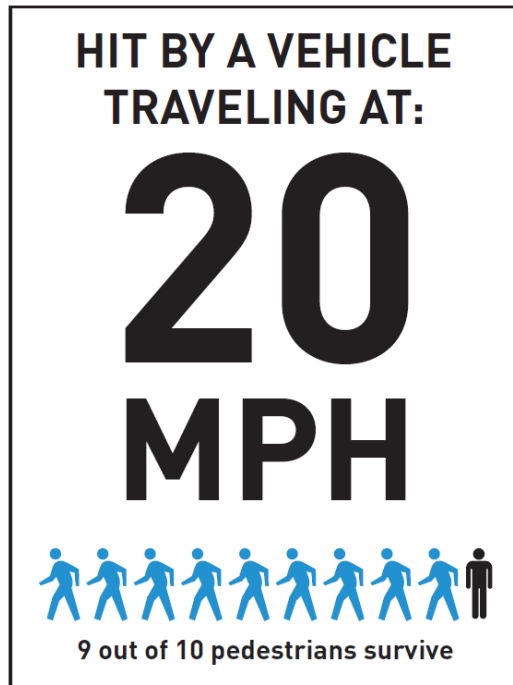
- Many traffic calming measures have been installed by Safe Routes to School and Neighborhood Greenways
- Greenways evaluating for additional traffic calming in this area
- Vehicles are traveling +5 mph over speed limit for segments shown in **orange** - speed hump/cushions will be installed

See previous slide for Highland Park north



Why speed matters?

- Speed is *the* critical factor in the frequency and severity of a crash
- Key part of Vision Zero's efforts



What we've heard

- Neighborhood cut-through traffic
- Crossing improvements along 9th Ave SW
- Provide left-turn signal phasing at 16th Ave SW & Holden and Highland & Holden
- Increased pavement friction uphill on Highland Park Way SW
- Bike facility between Duwamish Trail and Highland Park neighborhood
- Turning from non-arterial streets into SW Holden St
- No rechannelization for bike lane

Highland Park Way SW looking south

Short-term improvements

- Temporary traffic signal (completed April 2020)
- Left-turn lanes at 16th/Holden
- Traffic calming elements (Phase 1) being designed:
 - Reduce speed limit to **25 MPH**
 - Parking lane lines and painted curb bulbs along 9th Ave SW
 - Speed humps/cushions
 - Radar speed signs

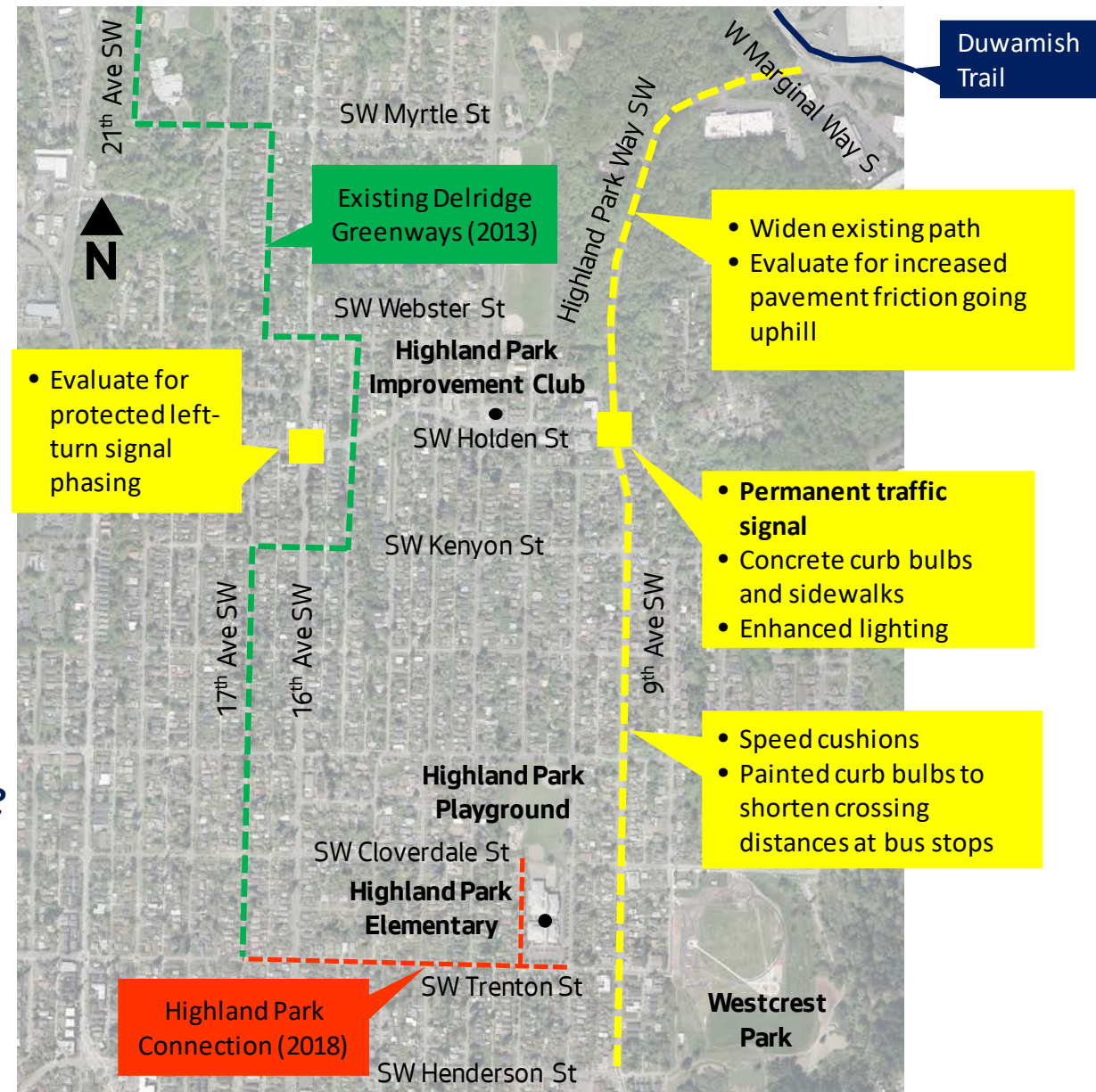


Zig zag treatment at 9th Ave SW & SW Cloverdale St

Proposed improvements

- Permanent traffic signal at Highland/Holden with left-turn phasing
- Concrete curb bulbs and sidewalks
- Widening existing path on east side of Highland Park Way SW
- *Neighborhood traffic calming (Phase 2)**
- *Southbound protected bike lane (re-evaluate when traffic volumes normalize)**

* Evaluated as more data is being collected

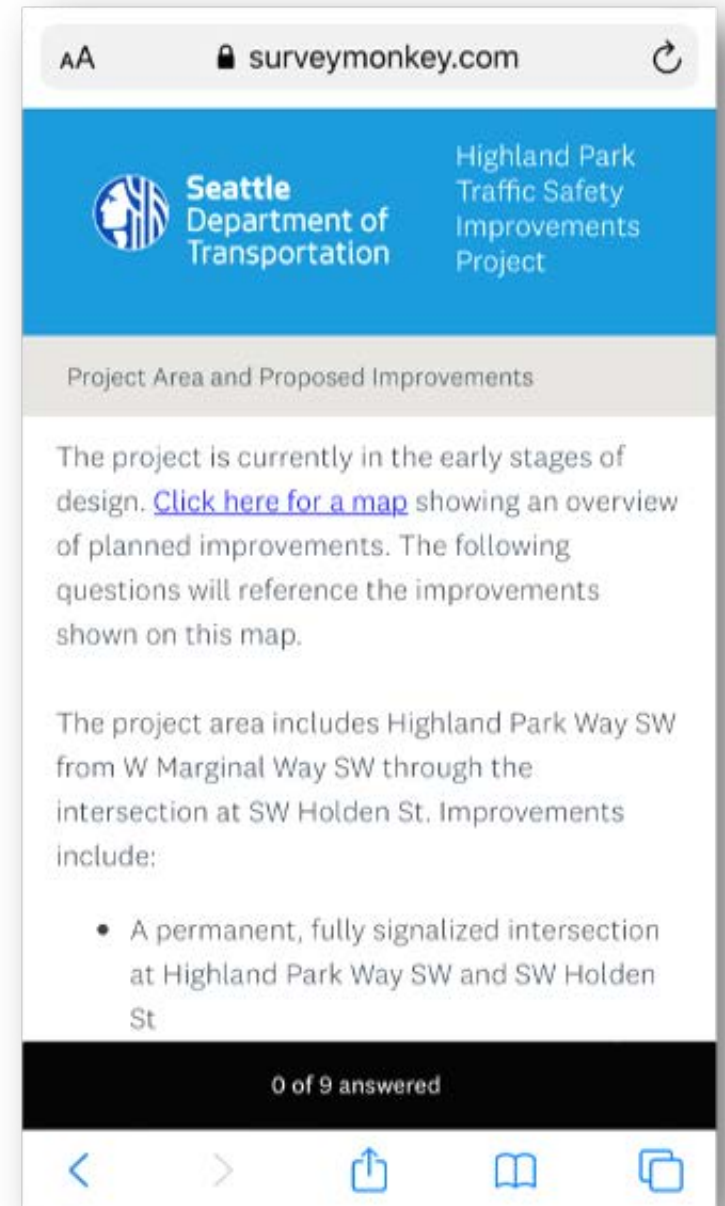


Please take our survey!

www.surveymonkey.com/r/highlandholden

Translation services available (206) 727-8697

Provide input by **May 31st**



Next steps

What is happening	When
Issues identification meeting	May 2020
Design update and review meeting	Fall 2020
Implement neighborhood traffic calming	Q4 2020
Construction	Q4 2021
Evaluation	Ongoing

Questions / Discussion

Project Developer James Le

www.seattle.gov/transportation/HighlandParkSafety

