



# Route 40 Transit-Plus Multimodal Corridor Project

Seattle Pedestrian Advisory Board Meeting  
October 14, 2020

# Presenters



**Route 40**



**Kay Yesuwan**  
Seattle Department  
of Transportation  
Project Developer



**Virginie Nadimi**  
King County Metro  
Transportation  
Planner



**Andrew Natzel**  
Seattle Department  
Of Transportation  
Operations Engineer

# Agenda

1. Route 40 Background
2. Project Objective & Scope
3. What We Heard to Date
4. Concept Ideas, Request for SPAB Input
5. Current Schedule & Funding
6. Next Steps



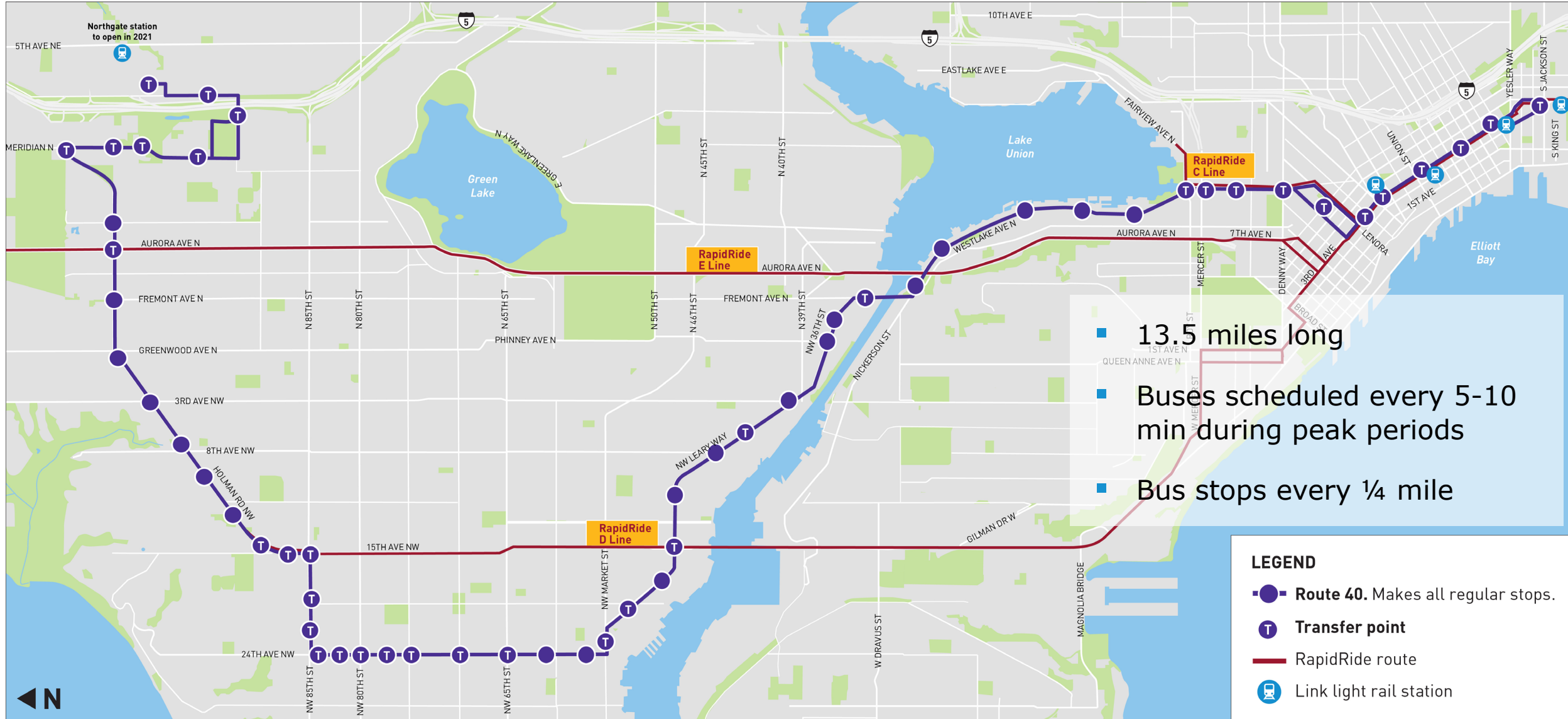
**Route 40**



# Route 40 Introduction



**Route 40**





# Route 40 Transit Plus-Multimodal Corridor Project Objectives



Route 40



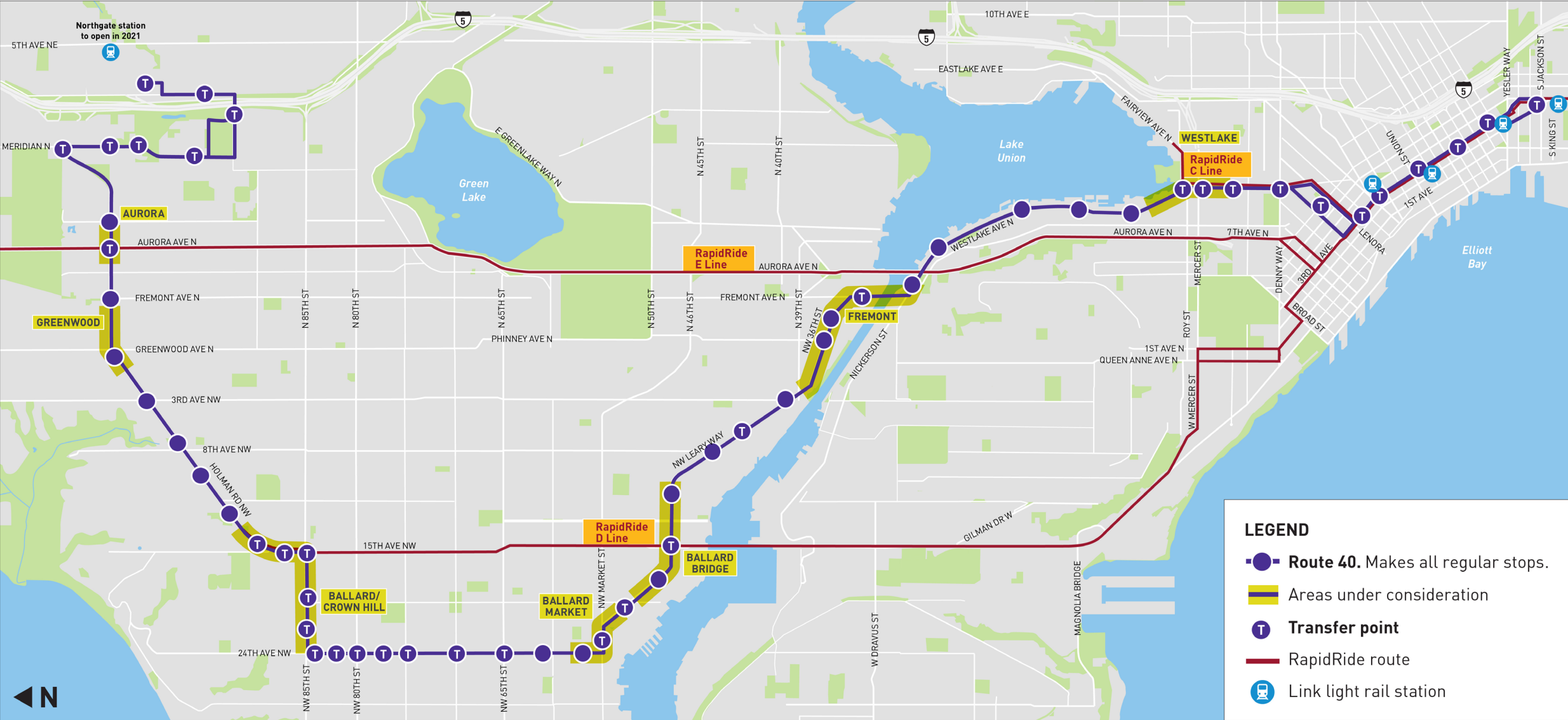
- Make bus trips faster and more reliable, now and in the future
- Make it safer and easier to get to and on the bus
- Respond to community needs and priorities
- Fulfill Levy to Move Seattle commitments



# Route 40 TPMC Target Study Segments



Route 40



# Who We Heard From

- Online survey opened 2/24/2020 to 4/3/2020, received 1060 responses
- King County operator ride along and survey
- 40 attendees of 6/30/2020 virtual meeting
- Modal board meetings
- Neighbors & community groups

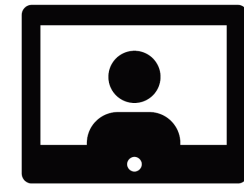


**Route 40**



**1060**

Online Survey Responses



**40**

Virtual Meeting  
Attendees



# What We Heard So Far



**Route 40**



## ROUTE 40 RIDER PRIORITIES



Bus speed reliability improvements



Walking and biking accessibility improvements and new crossings



Keeping cars and freight moving



Reducing traffic speeds for safety reasons



Keeping parking along the route



# What We Heard So Far



Route 40



## WALKING AND BIKING PROJECT IDEA RANKINGS



Improved sidewalks and crosswalks



Accessible ramps and curbs at intersections



Improved bike paths and crossings



Improved bike connections

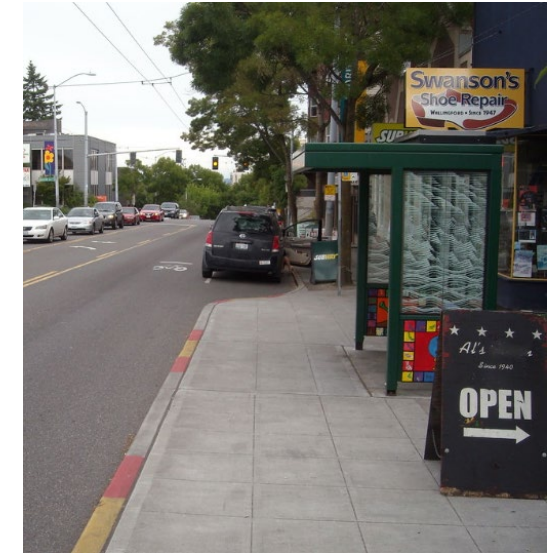


# Route 40 Concept Ideas

- Transit stops
  - Bus bulb outs
  - Stop relocation/consolidation
  - Extended bus zone
- Bus Lanes
- Roadway
  - Queue jumps
  - Turn restrictions
  - Channelization
  - Curb bulbs



Route 40



# Route 40 Concept Ideas - Continued



Route 40



- Reduced speed limits
- Signals
  - Transit signal priority
  - New signals
  - Leading pedestrian intervals
  - Phasing changes



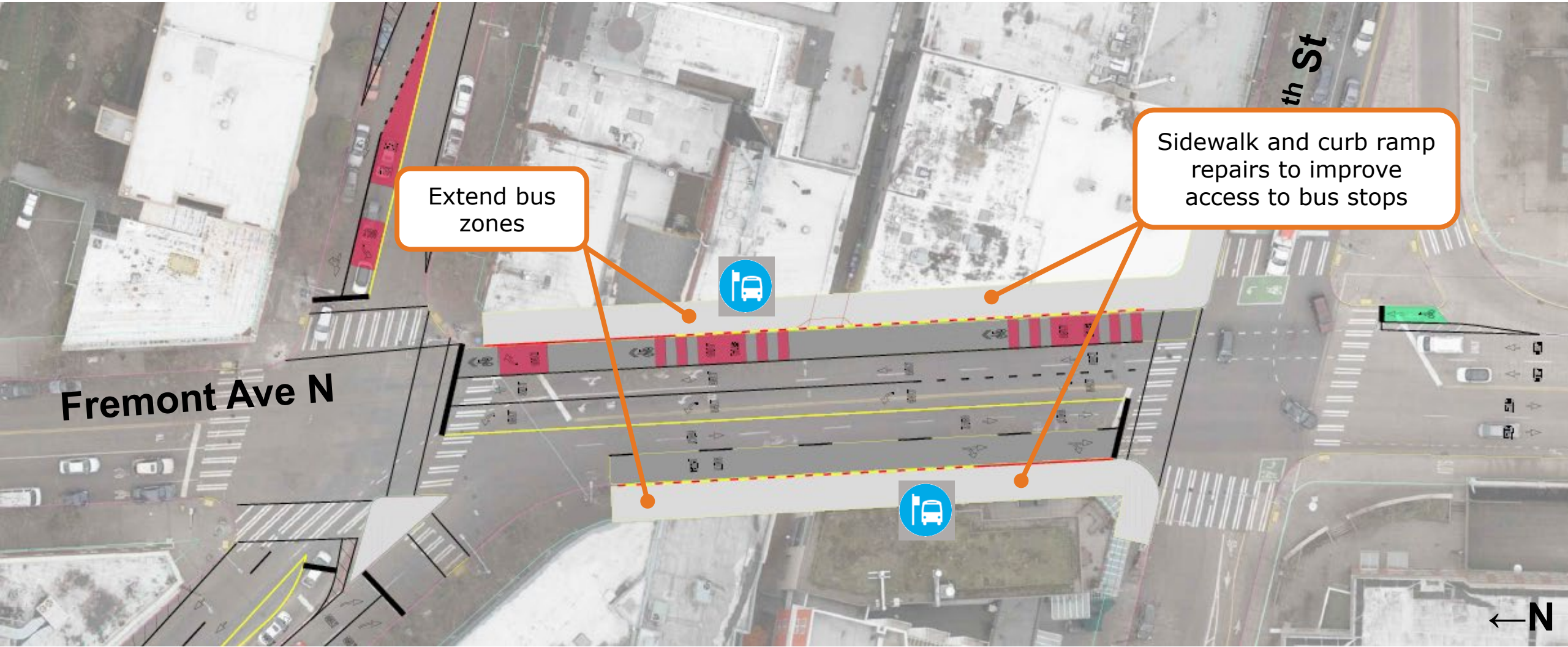


# Fremont Segment (North of Bridge) - DRAFT



+

Route 40





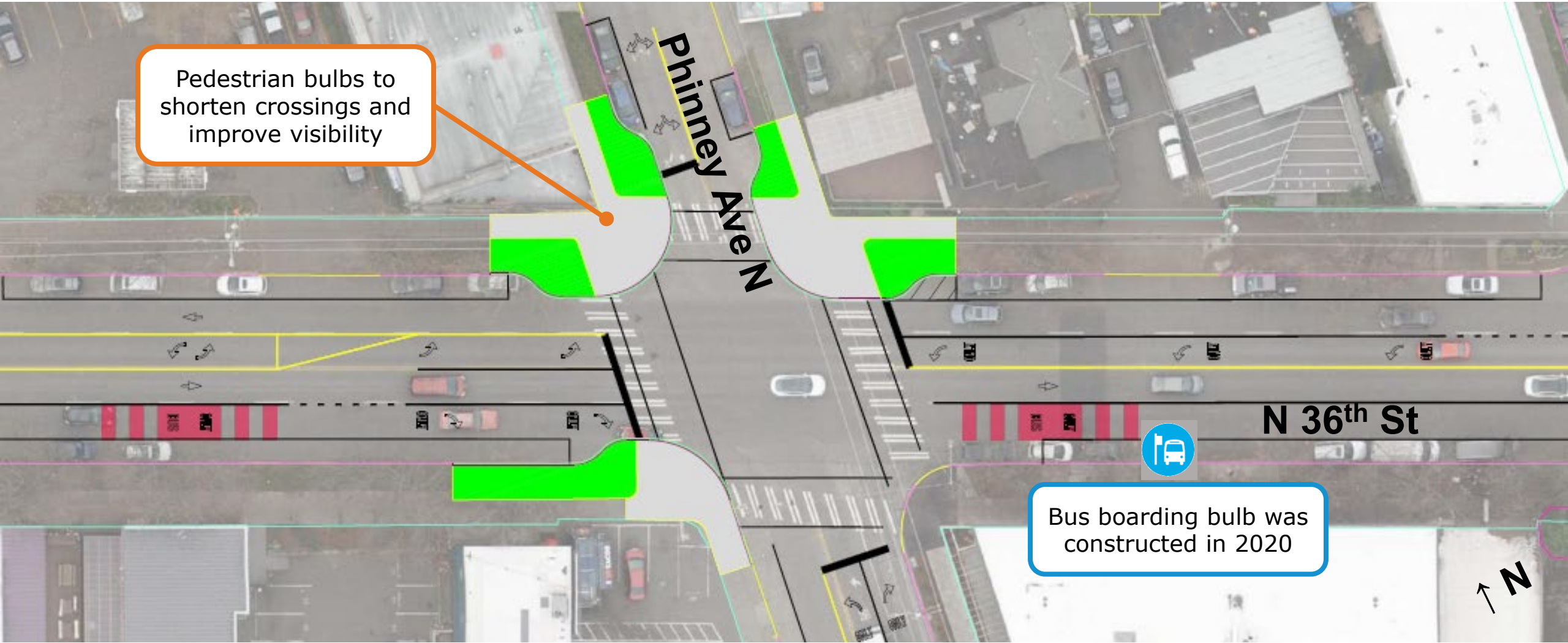
# Fremont – Phinney Ave N - DRAFT



Route 40



Pedestrian bulbs to shorten crossings and improve visibility

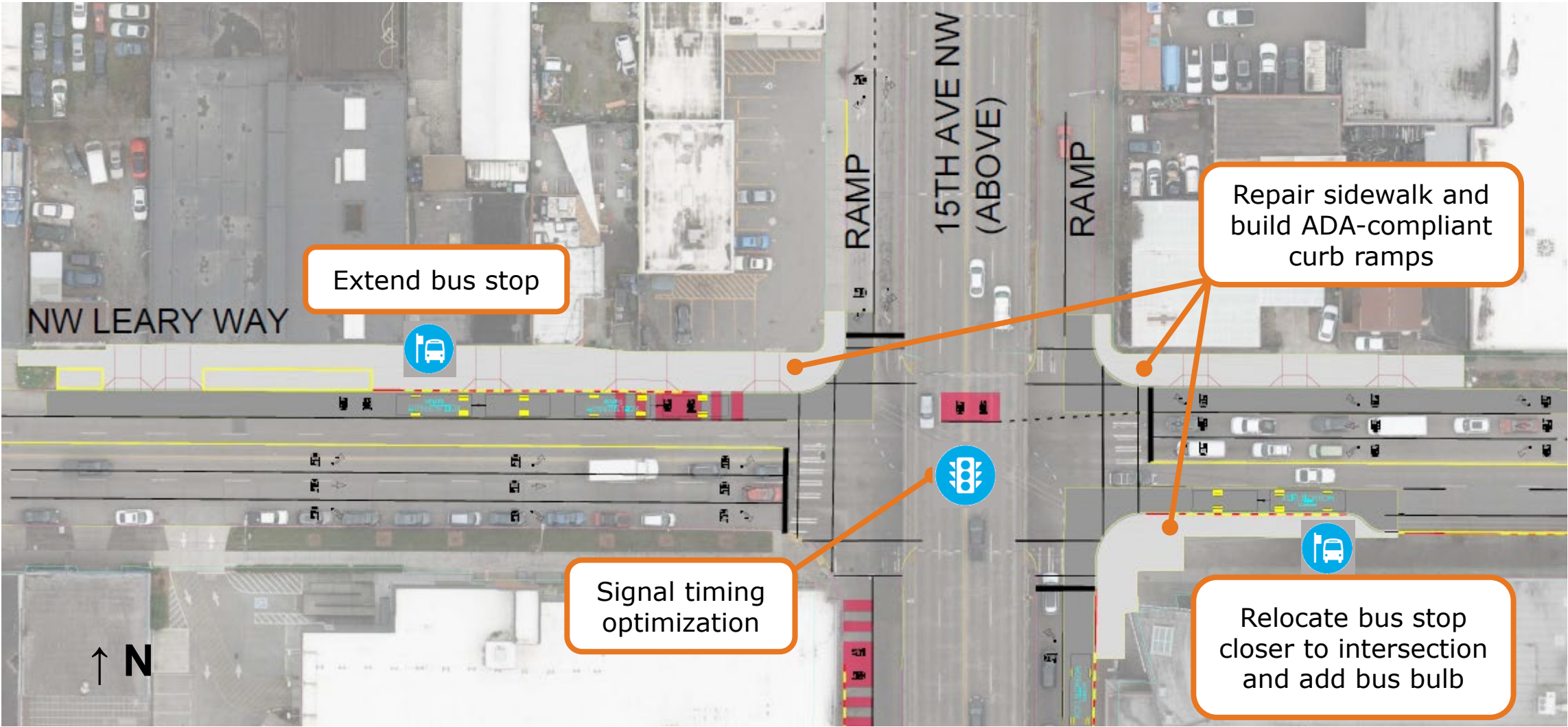


Bus boarding bulb was constructed in 2020

# Ballard Bridge Segment - DRAFT



Route 40

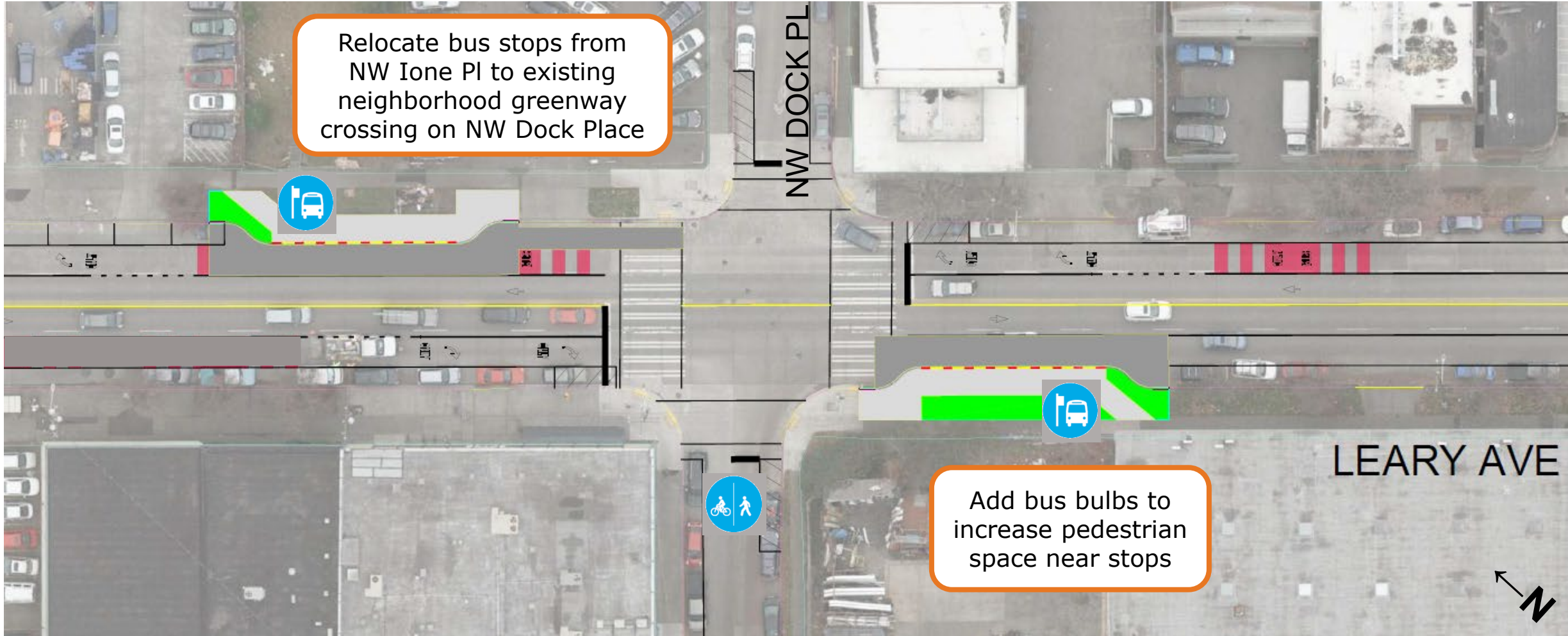




# Ballard/ Market Segment - DRAFT



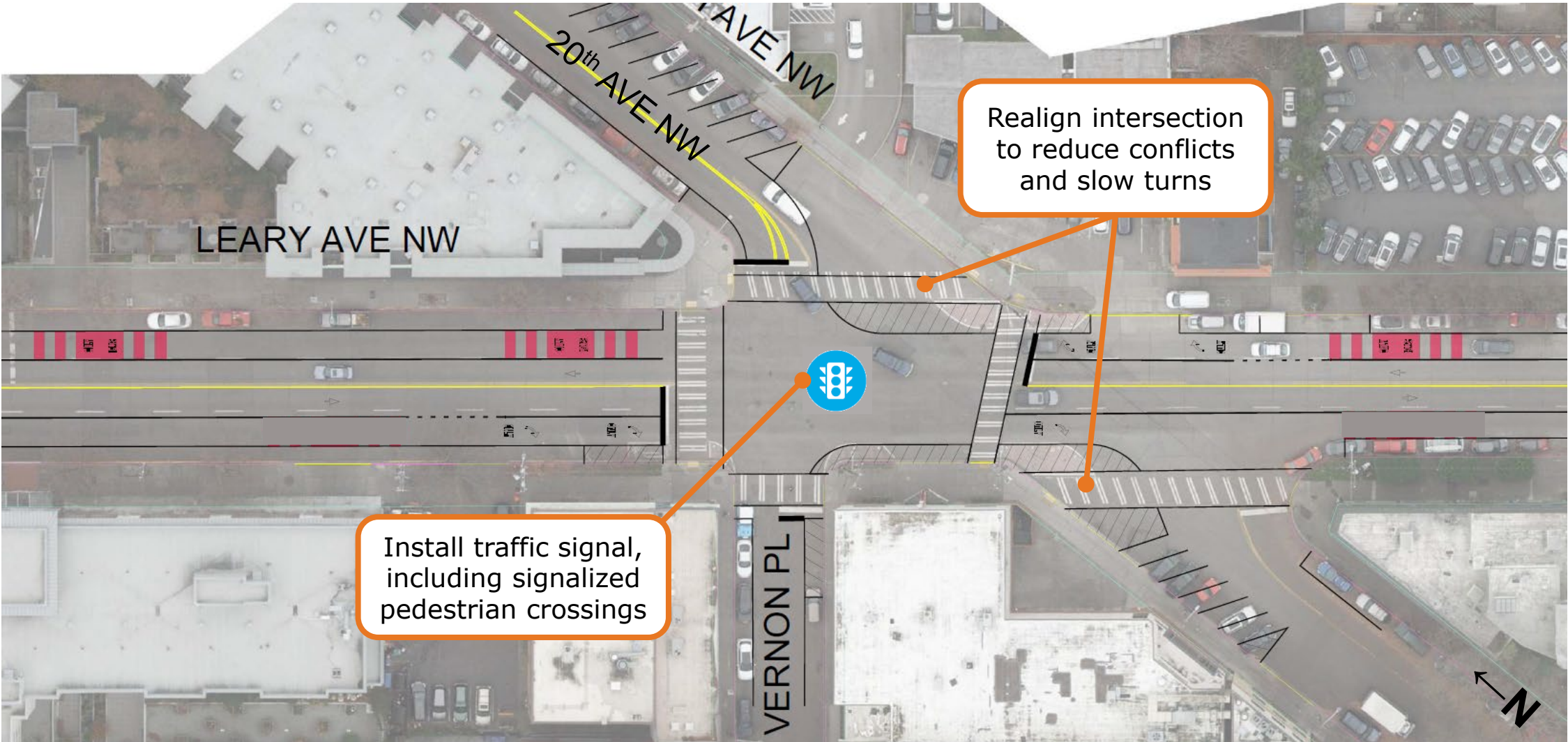
Route 40



# Ballard Segment (20<sup>th</sup>/ Leary) - DRAFT



Route 40

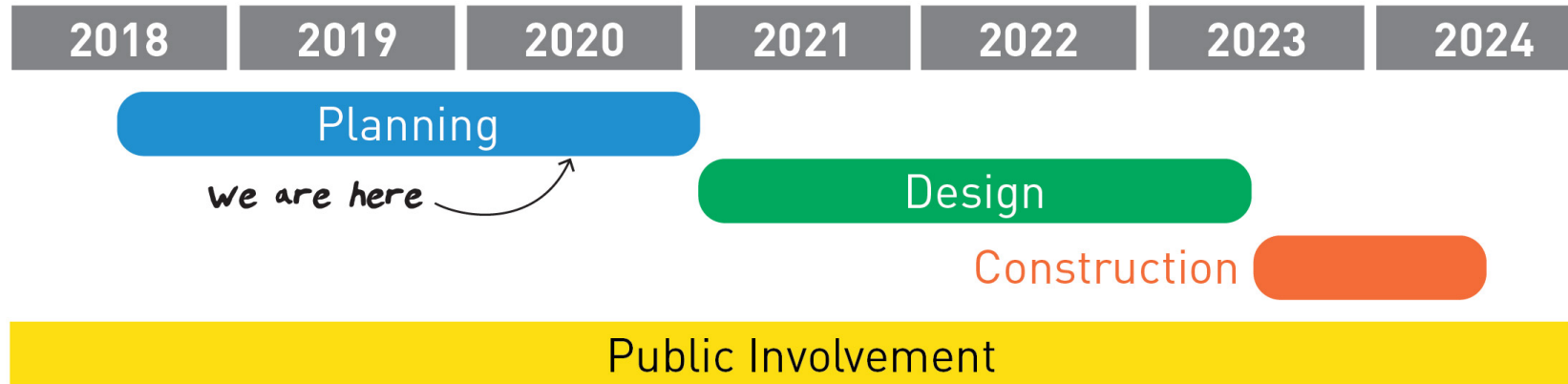




# Route 40 TPMC Project Schedule



Route 40



- **Planning**

**What we do:** Collect traffic and transit data, review previously completed studies, develop concepts, and gather community experiences to define options.

- **Design**

**What we do:** We work with the community and produce a more detailed project design.

- **Construction**

**What we do:** We construct the project and keep the community informed on the latest construction updates, schedule, and expected impacts.

# Route 40 TPMC Project Funding



Funding Source	Funding Amount
Move Seattle Levy	\$7.7M
Local	\$0.1M
Leverage	\$10.4M
Identified Leverage	\$6.0M
Total Budget	\$24.2M

## Next Steps



**Route 40**



- Use community feedback to shape draft concepts
- Perform technical evaluations of concepts, including operational review, cost estimating, and construction feasibility
- Partner agency and stakeholder coordination on revised concepts
- Advance select concepts to 30% design
- Work with Pedestrian Master Plan program to identify additional funding for sidewalk and curb ramp improvement opportunities



**Route 40**



## Comments/Questions?

[Route40@seattle.gov](mailto:Route40@seattle.gov)

<http://www.seattle.gov/transportation/route40>