



# Route 40 Transit-Plus Multimodal Corridor Project

Seattle Freight Advisory Board Meeting  
October 20, 2020



# Presenters & Moderator



**Kay Yesuwan**  
Seattle Department  
of Transportation  
Project Developer



**Elisabeth Wooton**  
Seattle Department  
of Transportation  
Transportation  
Planner



**Andrew Natzel**  
Seattle Department of  
Transportation  
Transportation Operations  
Lead

# Agenda

1. Route 40 Background
2. Project Objectives & Outreach Overview
3. Concepts Ideas, Request for Board Input
4. Schedule, Funding & Next Steps



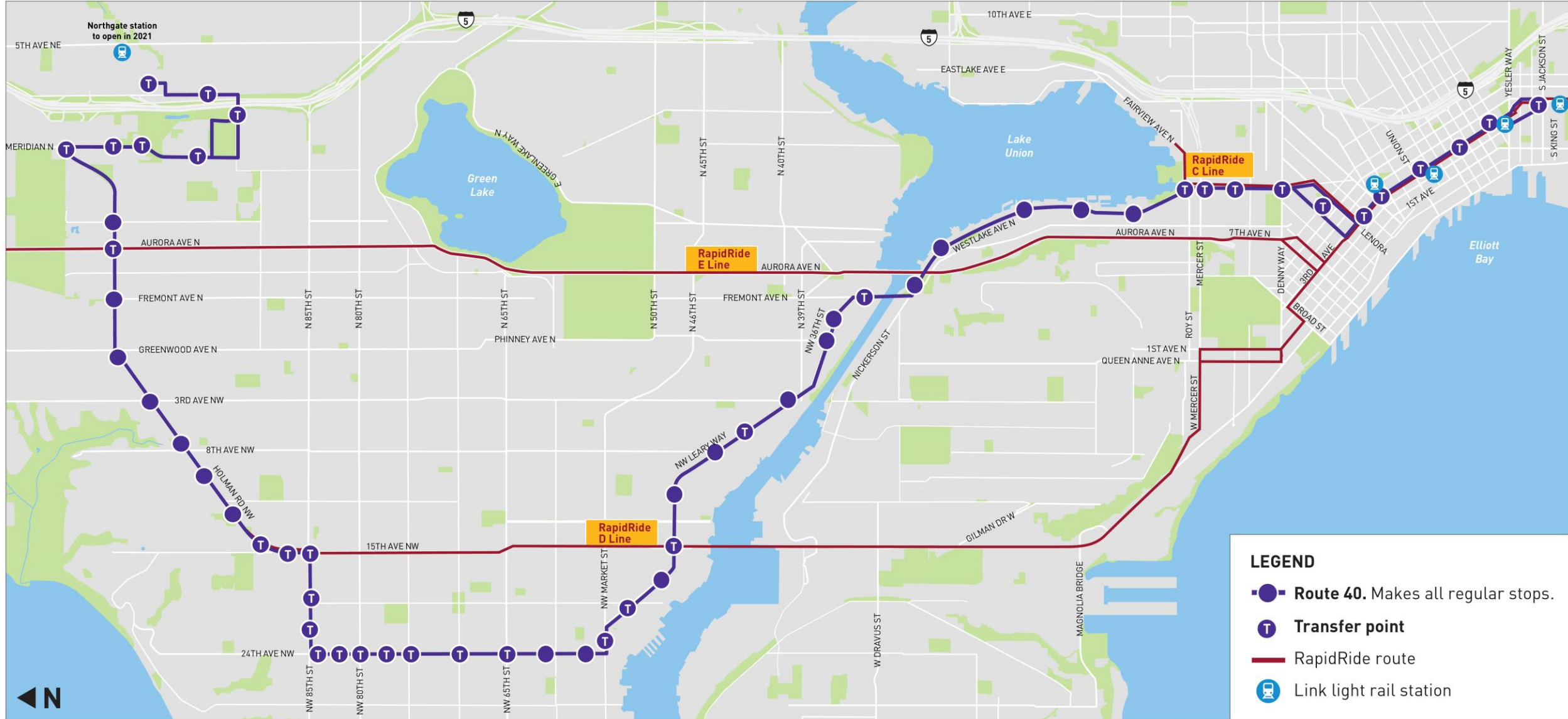
Route 40



# Route 40 Introduction



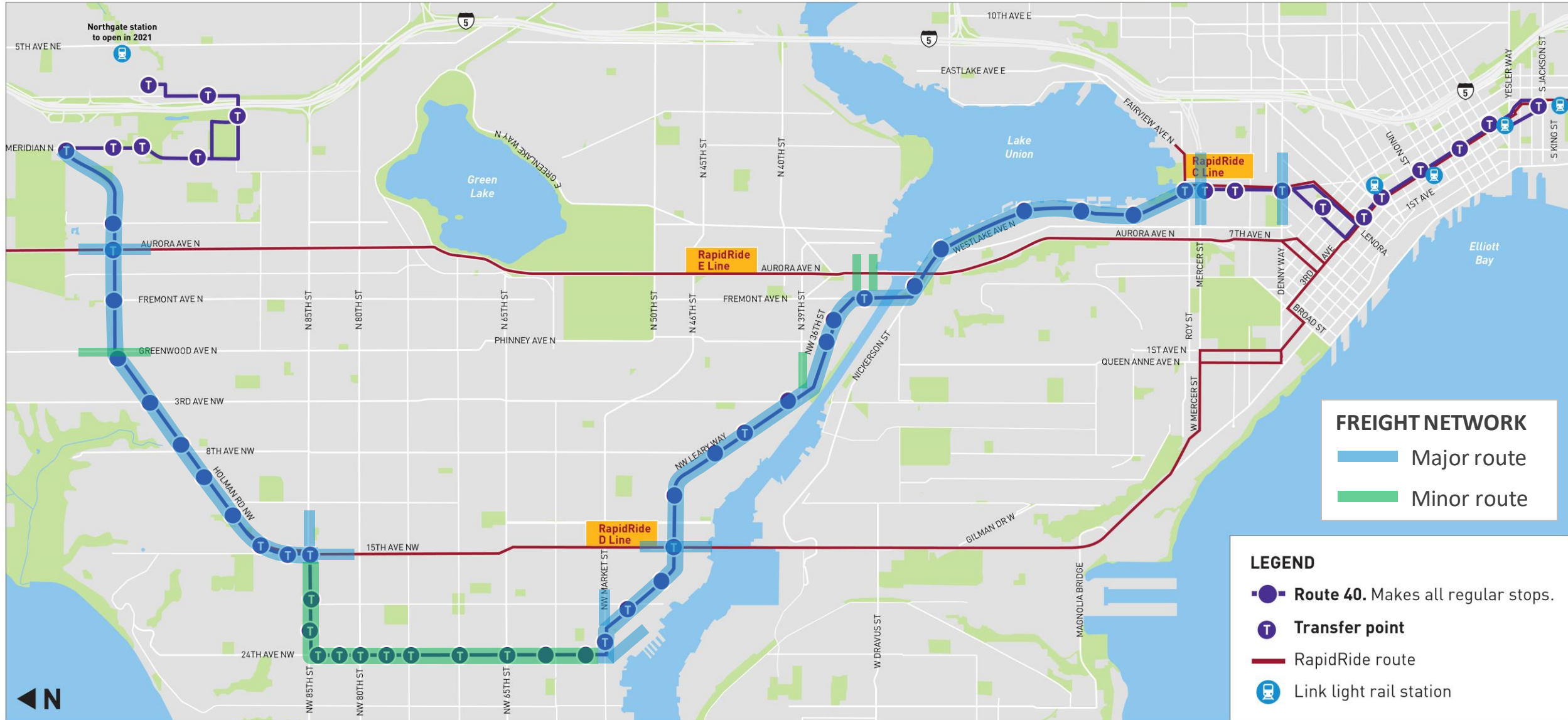
Route 40



# Freight Network & Intersections



## Route 40



# Ridership

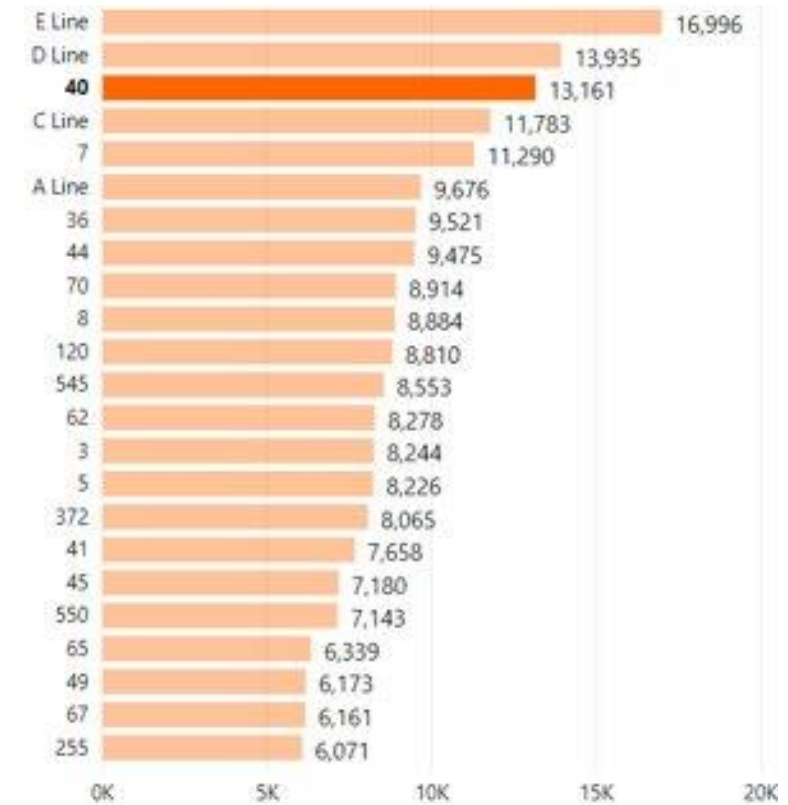


## Route 40



- 3 million annual rides
- Even during COVID19, Route 40 is still one of Metro's highest ridership routes

Routes by Average Weekday Ridership (April 2019)



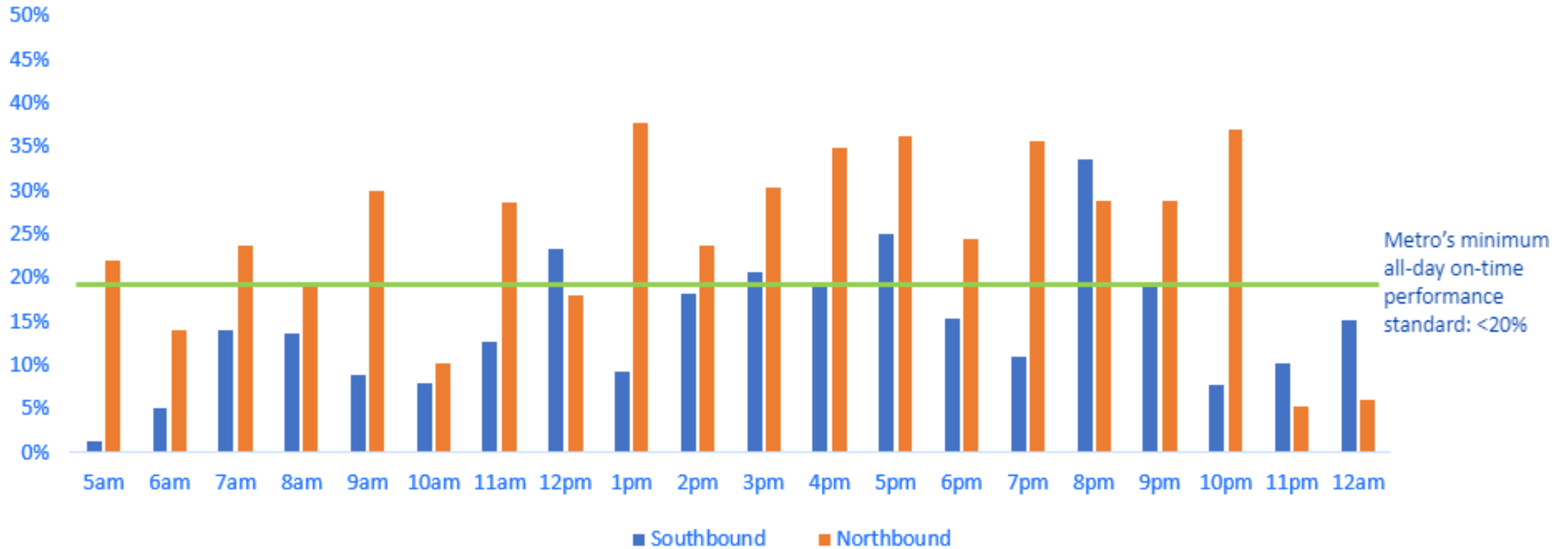
# On-Time Performance



**Route 40**



Average % of Late Trips (Weekdays, April 2019)



# Route 40 TPMC Project Objectives



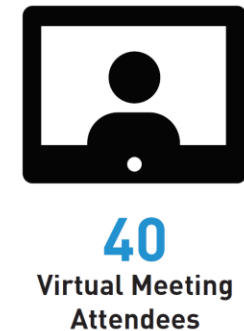
- Make bus trips faster and more reliable, now and in the future
- Make it safer and easier to get to and on the bus
- Respond to community needs and priorities
- Fulfill Levy to Move Seattle commitments





# Outreach Overview

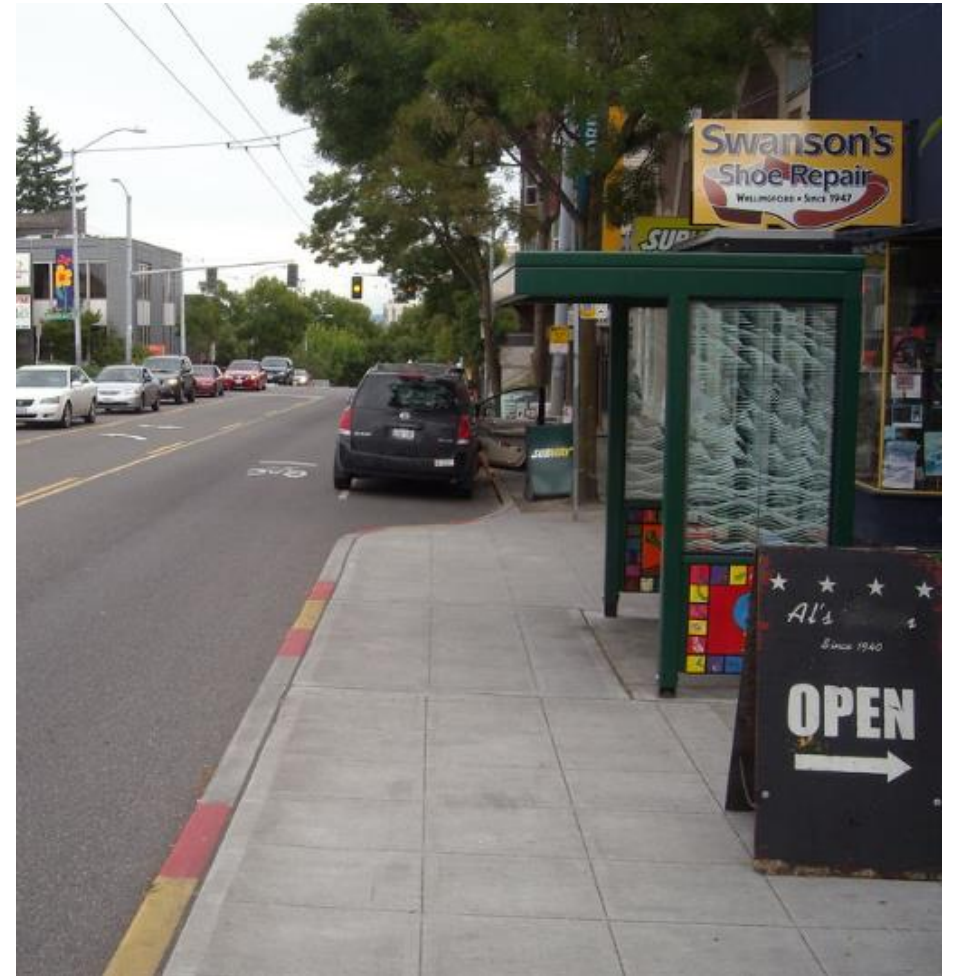
- Online survey in March received 1060 responses
- King County operator ride along and survey
- 40 attendees of virtual meeting in June 2020
- Modal board meetings
- Neighbors & community groups



# Concept Ideas



- Transit stops
  - Bus boarding bulbs
  - Stop relocation/consolidation
  - Extended bus zone
- Bus Lanes
- Roadway
  - Queue jumps
  - Turn restrictions
  - Channelization



# Concept Ideas Continued



Route 40



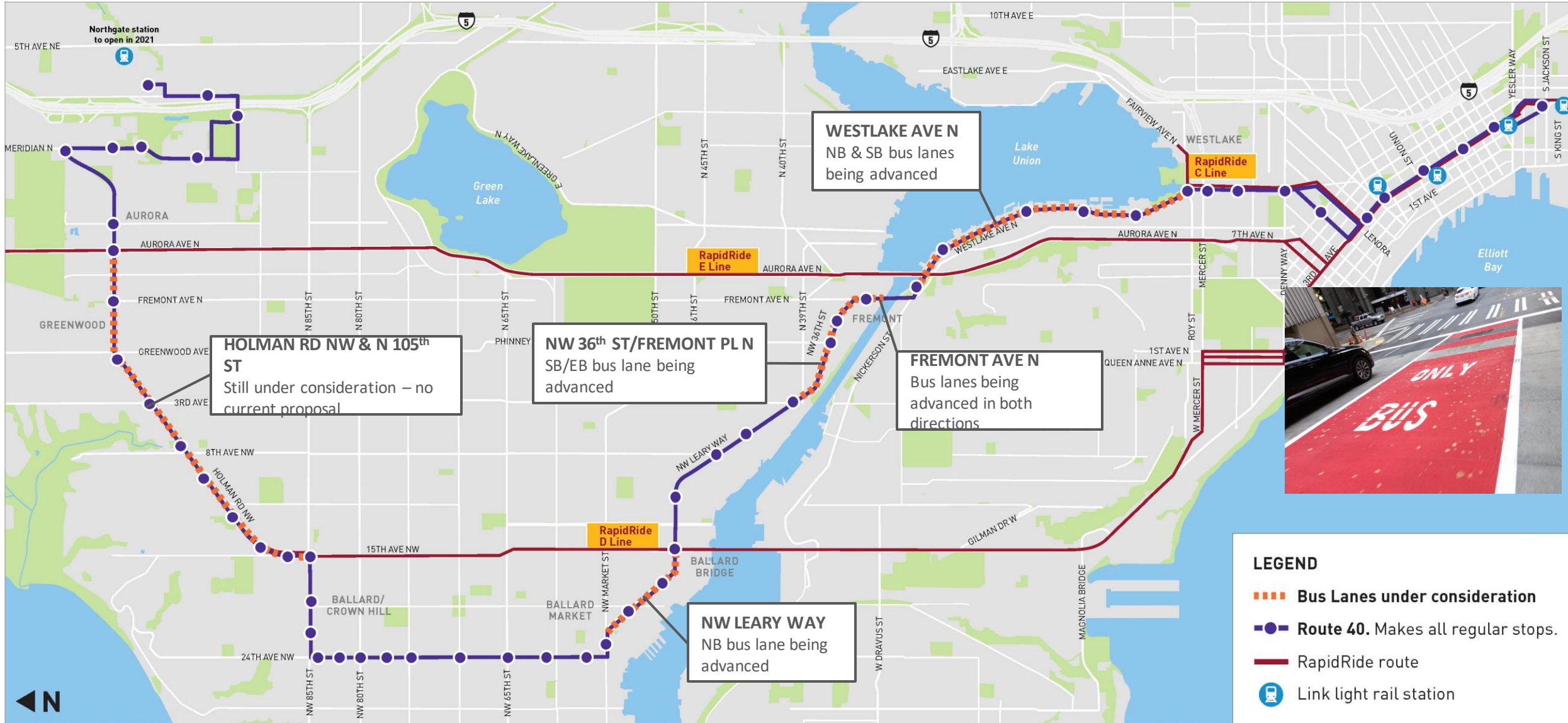
- Access & Mobility
  - Repair sidewalks
  - Curb bulbs & curb ramps
  - Enhance pedestrian crossings
  - Bike facilities and connections



# Route 40 - Bus Lane Overview



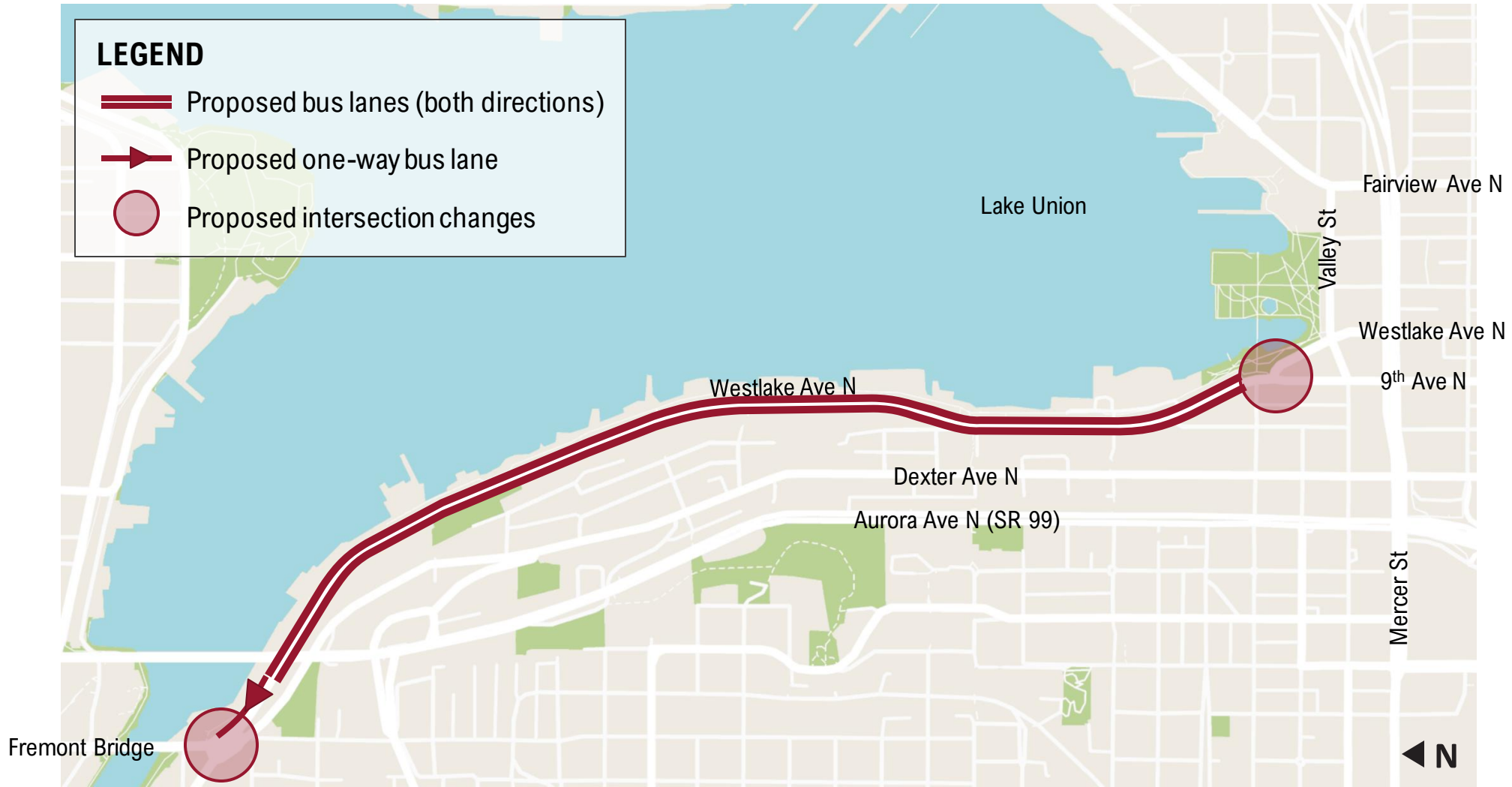
## Route 40



# Westlake – Overview (Proposed)



**Route 40**



# Westlake Ave N – Bus Lanes (Proposed)

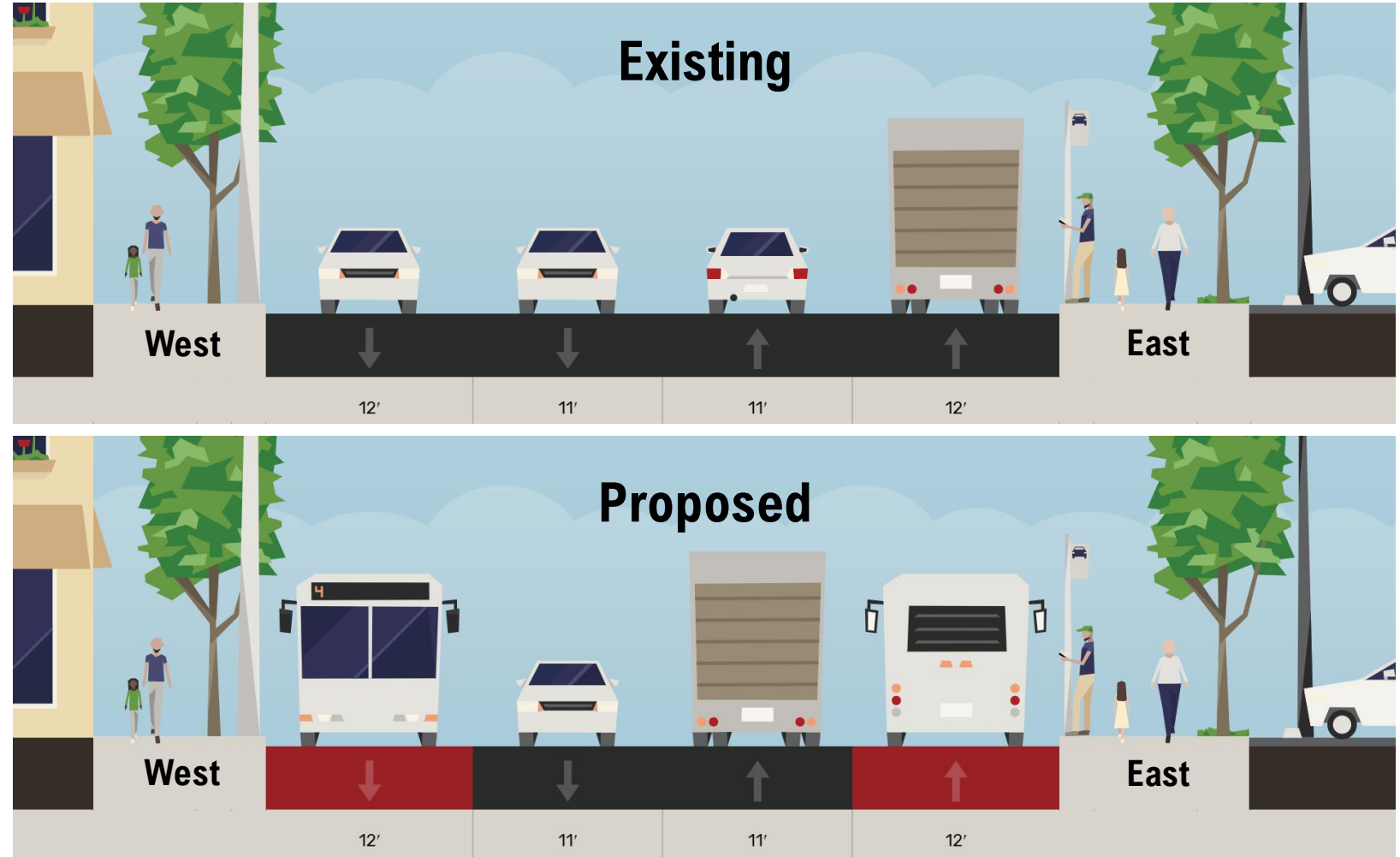


Route 40



Between 9<sup>th</sup> Ave N and Fremont Bridge

- Bus lanes in both directions
- Lane widths remain same as existing



# Westlake Ave N & 9<sup>th</sup> Ave N (Proposed)

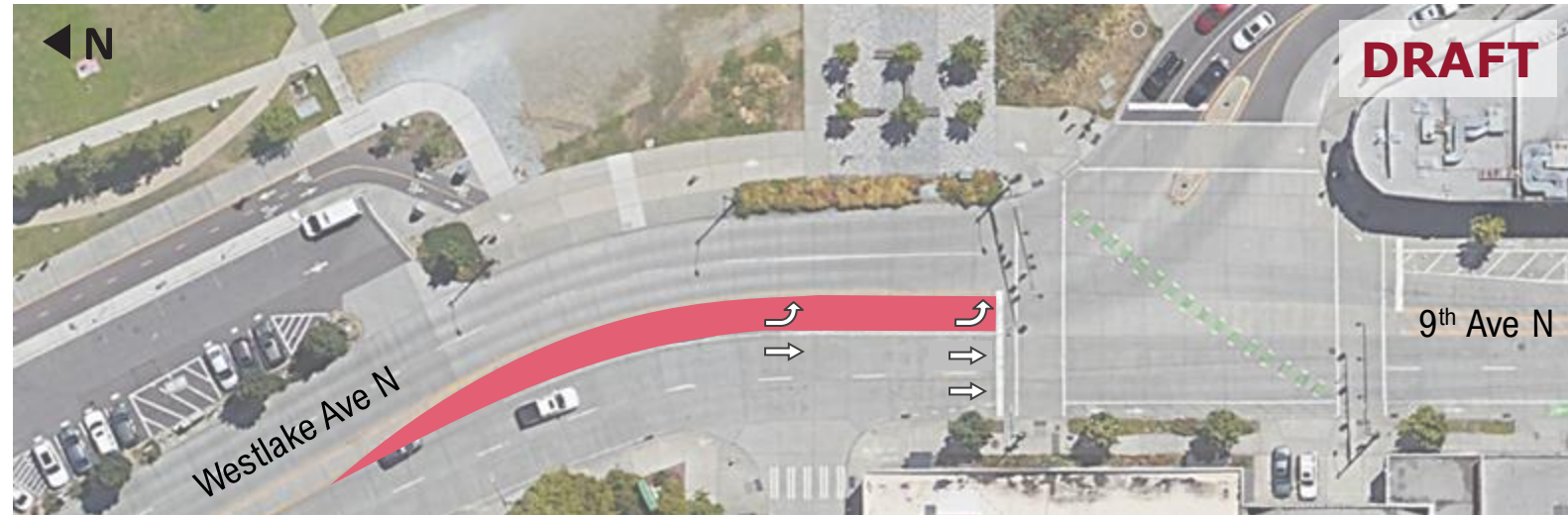


Route 40



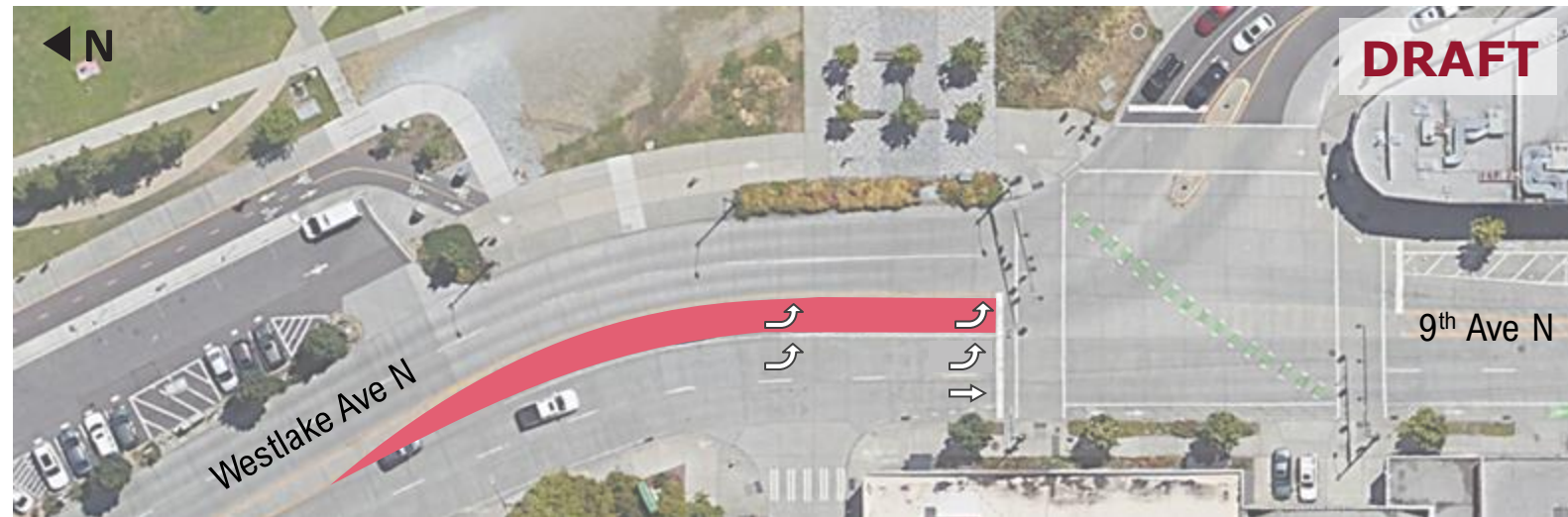
## Option A

- Transit only left-turn onto Westlake Ave N
- Freight and GP turn left at Mercer St



## Option B

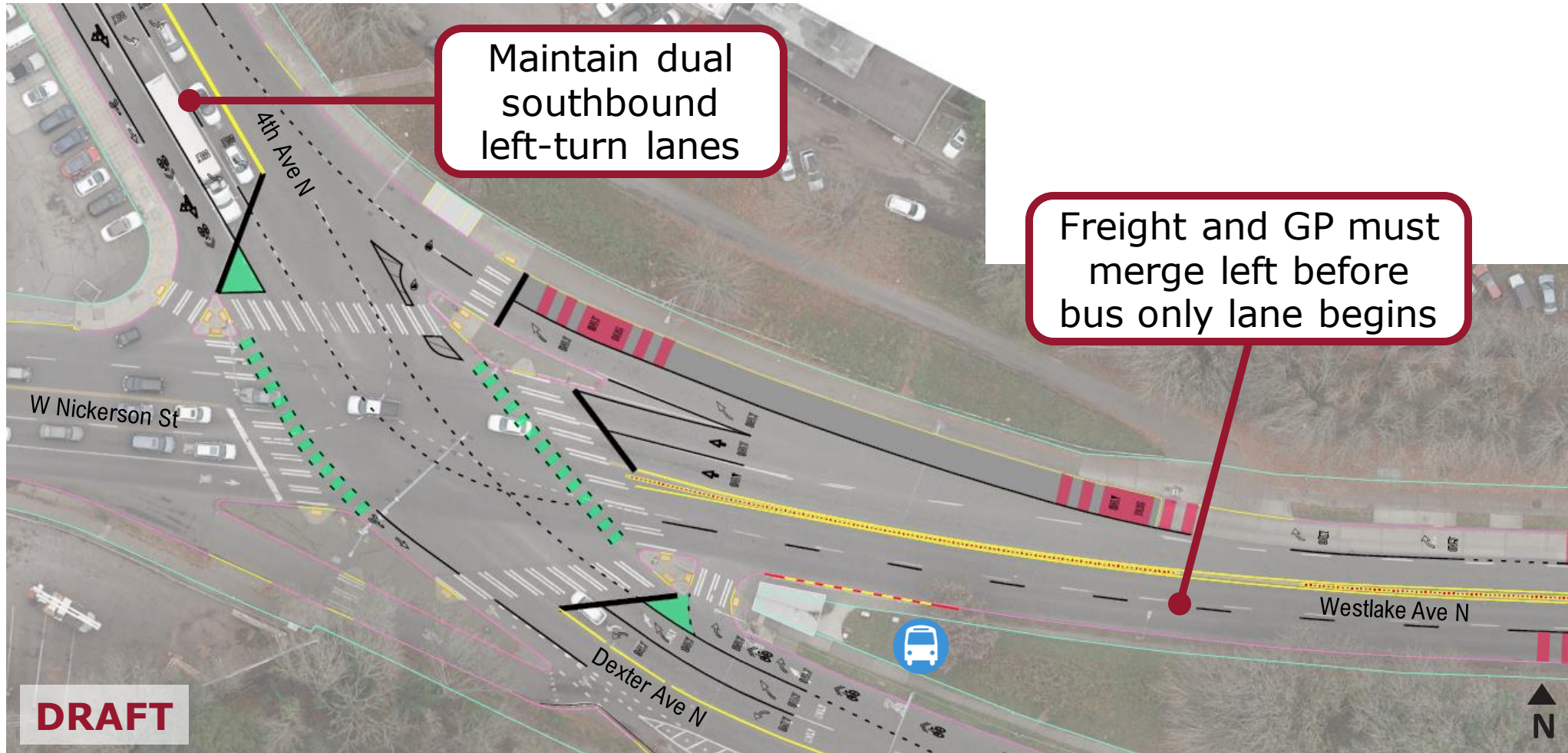
- Designated left-turn lane for transit with queue jump
- Convert one through lane to left-turns



# Westlake Ave N & Dexter/4th Ave N (Proposed)



Route 40





# Fremont – Overview (Proposed)



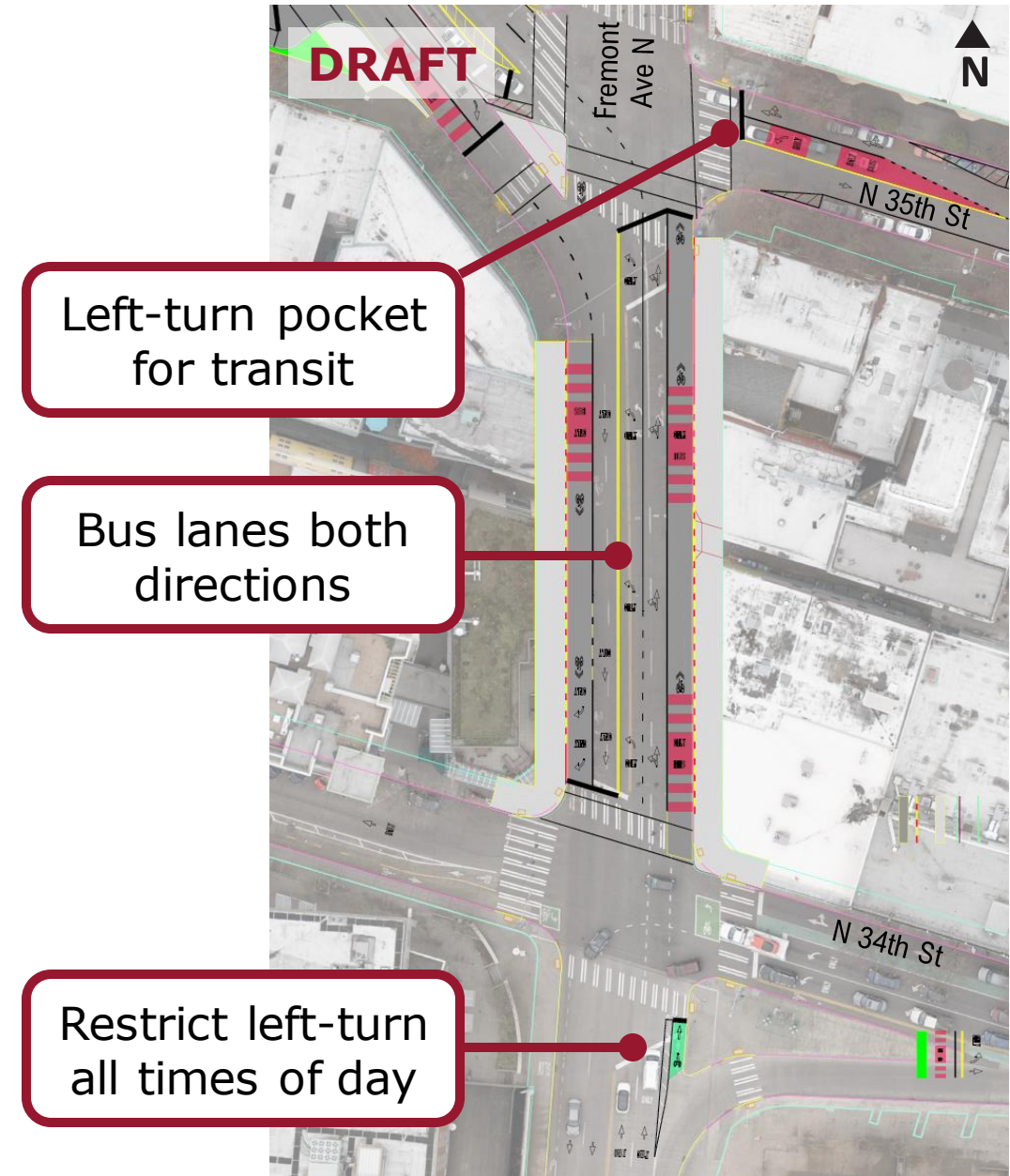
Route 40



# Fremont Ave N (Proposed)

Between N 34<sup>th</sup> St and N 35<sup>th</sup> St

- Bus lanes in both directions
- Standardize lane widths
- Westbound left-turn pocket on N 35<sup>th</sup> St for transit only  
*(considering transit only phase)*
- Restrict northbound left-turns from Fremont Ave N to N 34<sup>th</sup> St all times of day  
*(currently prohibited weekday PM peak)*



# NW 36<sup>th</sup> Street/Fremont Place N – Proposed

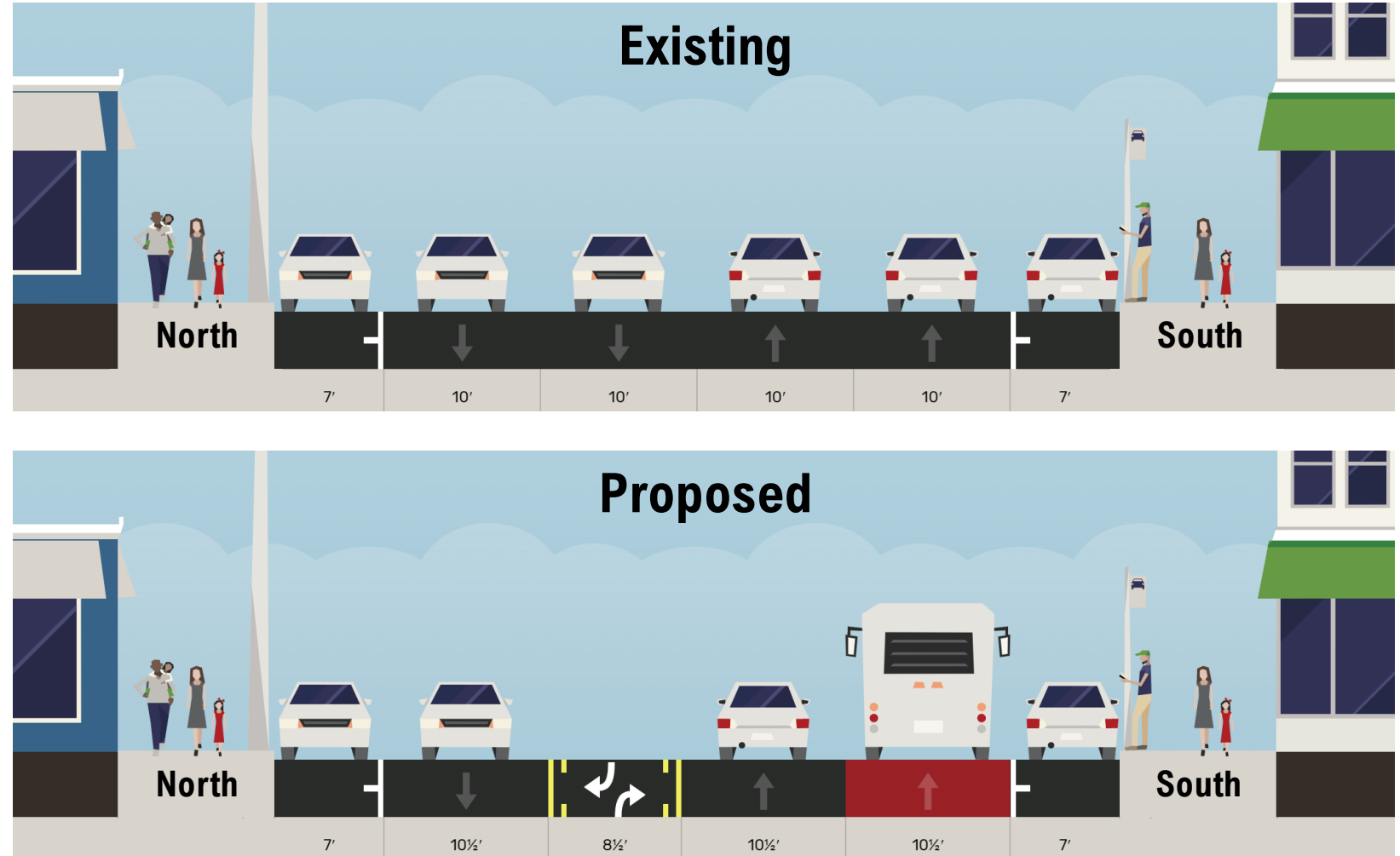


Route 40



Between 1<sup>st</sup> Street and Fremont Ave

- Southbound bus lane
- Narrow two-way center turn lane (8.5')
- Wider travel lanes (10.5')



# Ballard – Overview (Proposed)



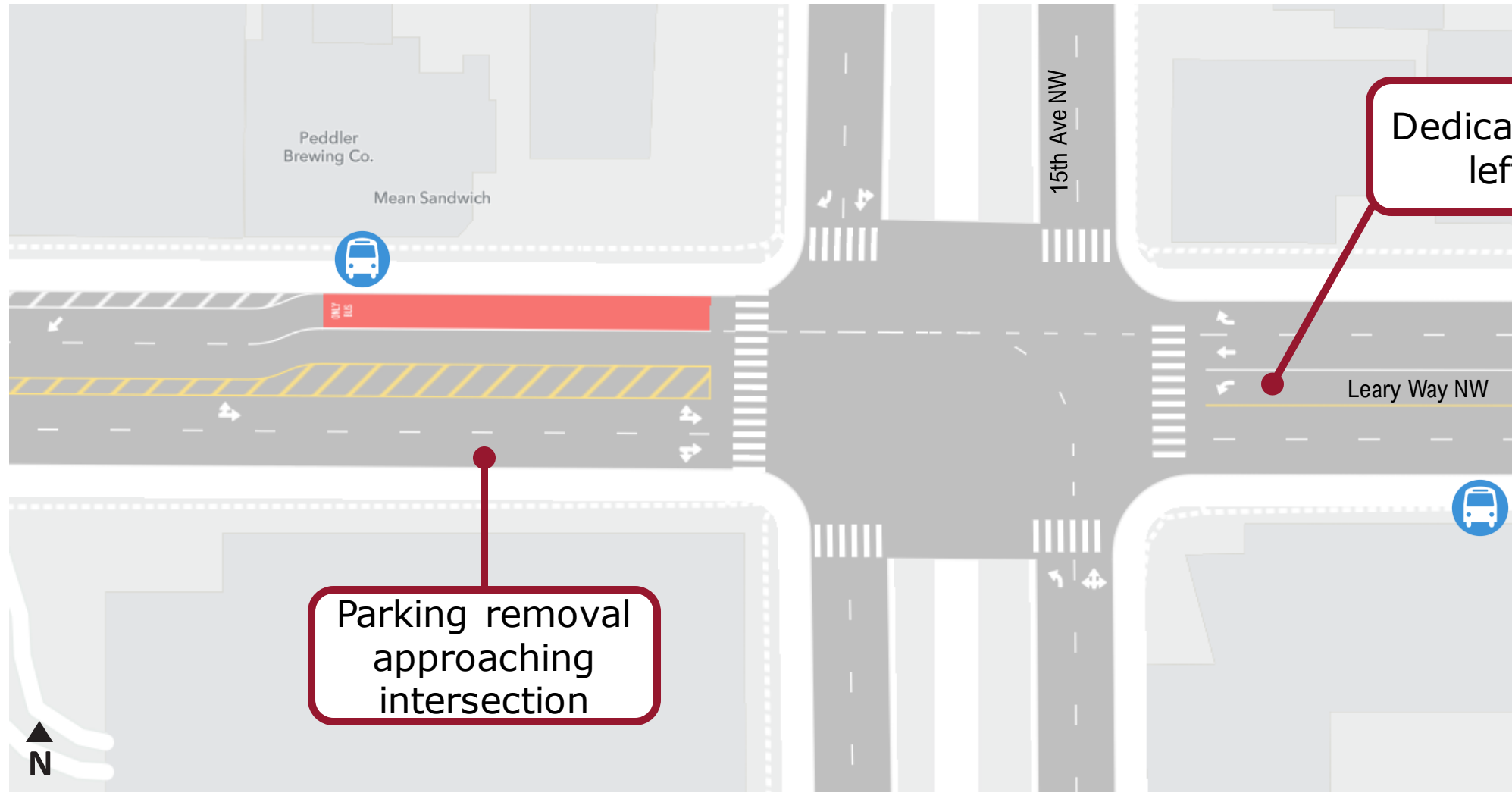
Route 40



# Leary Way NW & 15<sup>th</sup> Ave NW (Proposed)



Route 40



Dedicated westbound left-turn lane

Parking removal approaching intersection

# Leary Way (south segment) - Proposed

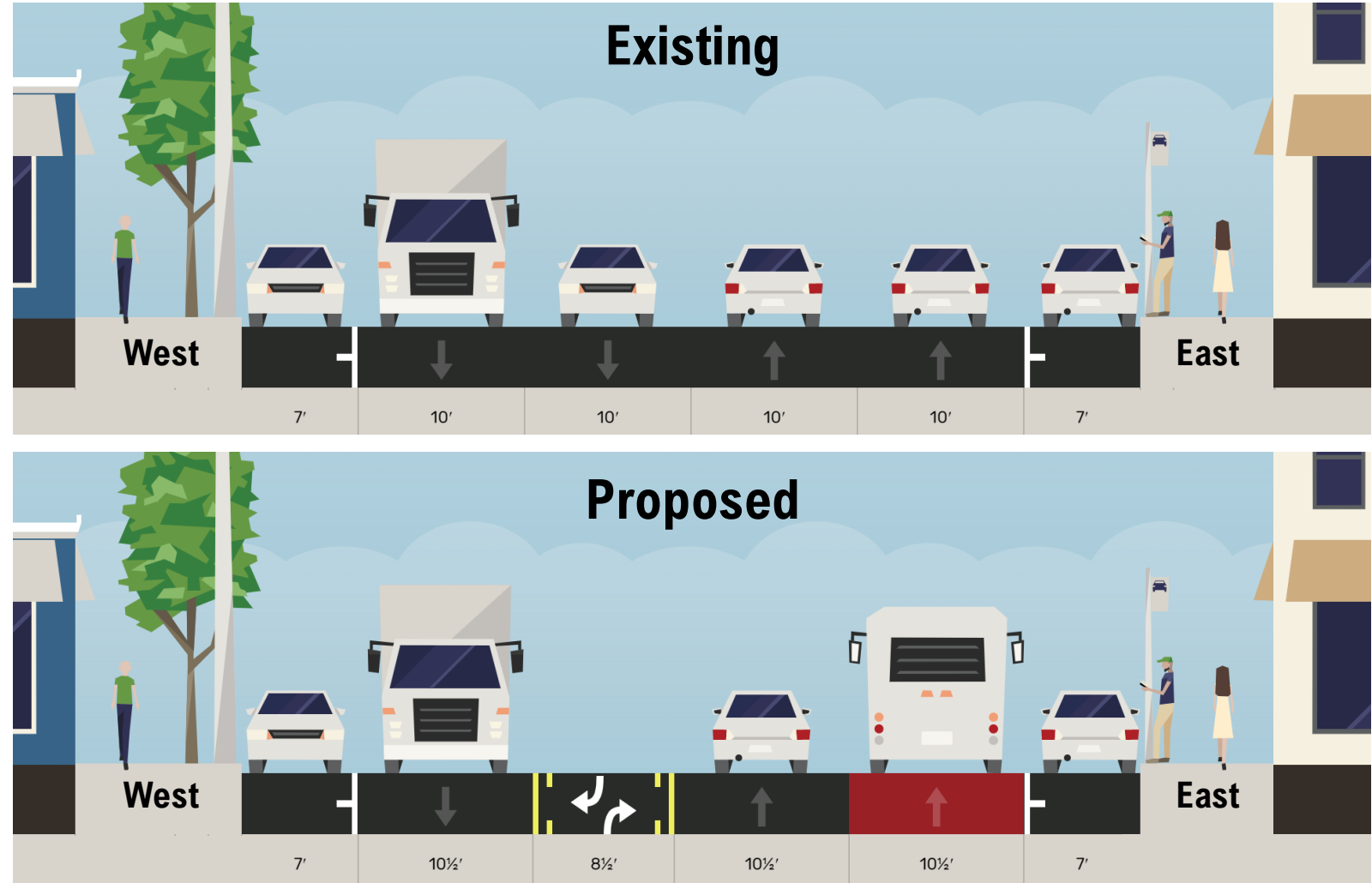


Route 40



Between 15<sup>th</sup> Ave NW and 20<sup>th</sup> Ave NW  
(54' curb-to-curb)

- Northbound bus lane
- Narrow two-way center turn lane (8.5')
- Wider travel lanes (10.5')



# Leary Way (north segment) - Proposed

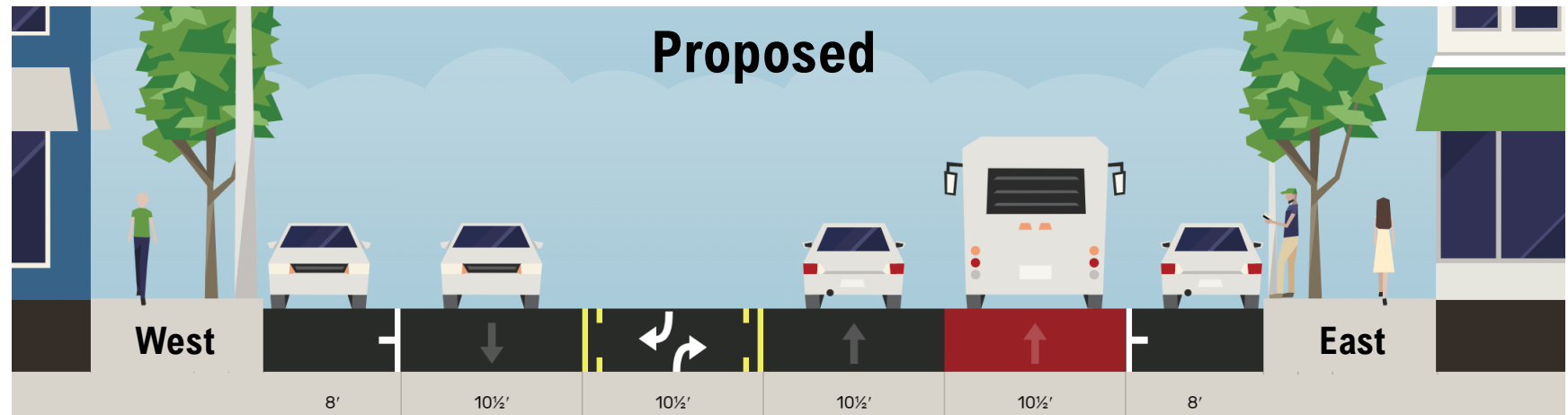
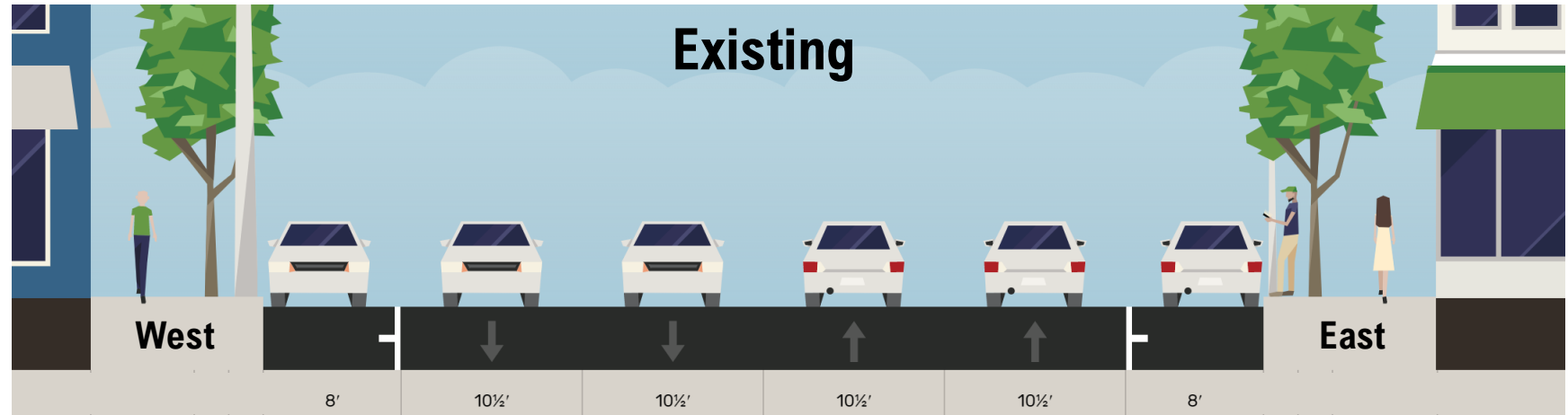


Route 40



Between 20<sup>th</sup> Ave NW  
and NW Market St  
(58' curb-to-curb)

- Northbound bus lane
- Two-way center turn lane
- Lane widths remain similar to existing



# NW Market Street (Proposed)

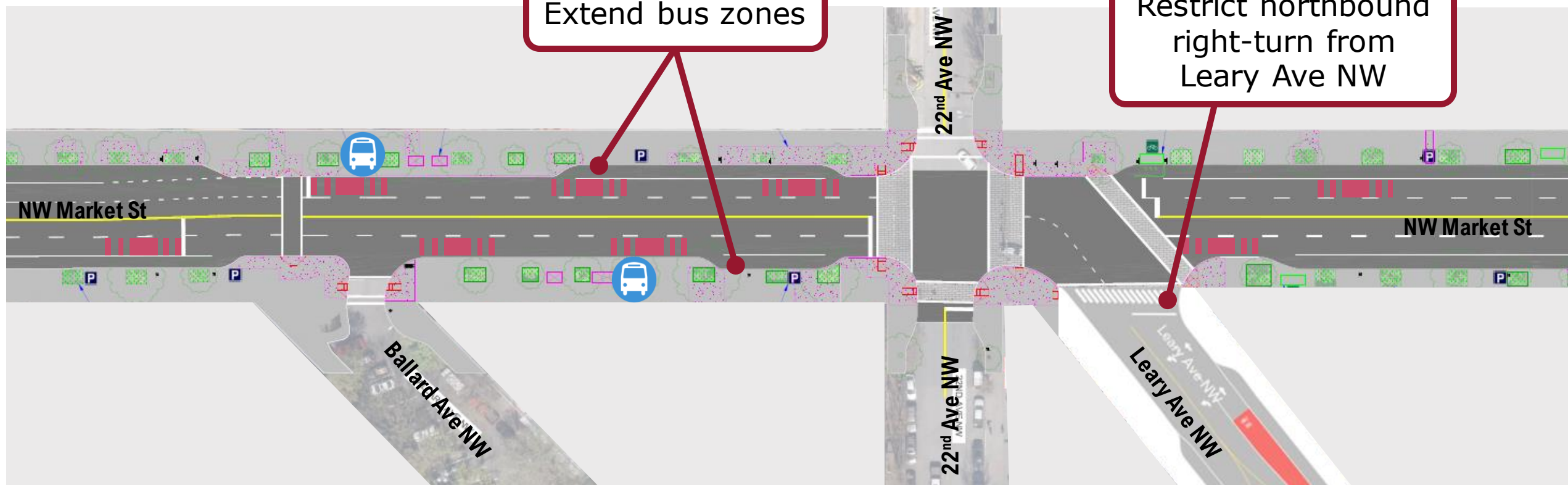


Route 40



Extend bus zones

Restrict northbound right-turn from Leary Ave NW

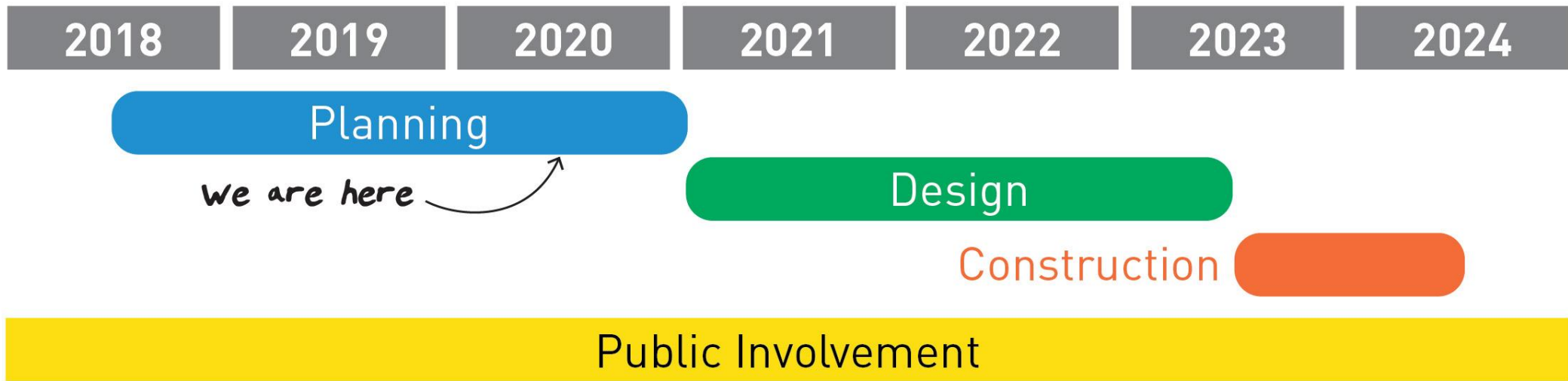




# Project Schedule



Route 40



# Current Funding Plan



**Route 40**



Funding Source	Funding Amount
Move Seattle Levy	\$7.7M
Local	\$0.1M
Leverage	\$10.4M
Identified Leverage	\$6.0M
<b>Total Budget</b>	<b>\$24.2M</b>

# Next Steps



- Perform technical evaluations of concepts, including operational review, cost estimating, and construction feasibility
- Partner agency and stakeholder coordination on revised concepts
- Advance select concepts to 30% design
- Future opportunities for input after 30% design



**Route 40**



## Comments/Questions?

[Route40@seattle.gov](mailto:Route40@seattle.gov)

<http://www.seattle.gov/transportation/route40>

