

West Seattle Neighborhood Greenway Most Promising Route

WELCOME

Please sign in, learn more about the most promising route, and talk with us.

TELL US WHAT YOU THINK

Take our online survey through July 9:

www.seattle.gov/transportation/WSeattleGreenway.htm

CONTACT

Dan Anderson

westseattlegreenway@seattle.gov

(206) 684-8105



GREENWAY DESIGN ELEMENTS

Slower Speeds and Stop Signs

- Calm traffic entering and crossing the greenway
- Drivers are better able to stop and prevent collisions



Speed Humps

- Slow motorists and people riding bikes
- Reduce cut-through traffic



Safer Crossings at Busy Streets

- Easier for seniors and children to cross
- Make motorists aware of people walking and biking



Neighborhood Activation

- Promote and activate public spaces
- Provide opportunity for greenery, parklets, and public spaces outside your door



Wayfinding

- Identify the street as a Neighborhood Greenway so people know what to expect
- Point the way to neighborhood destinations like parks, businesses, and other greenways

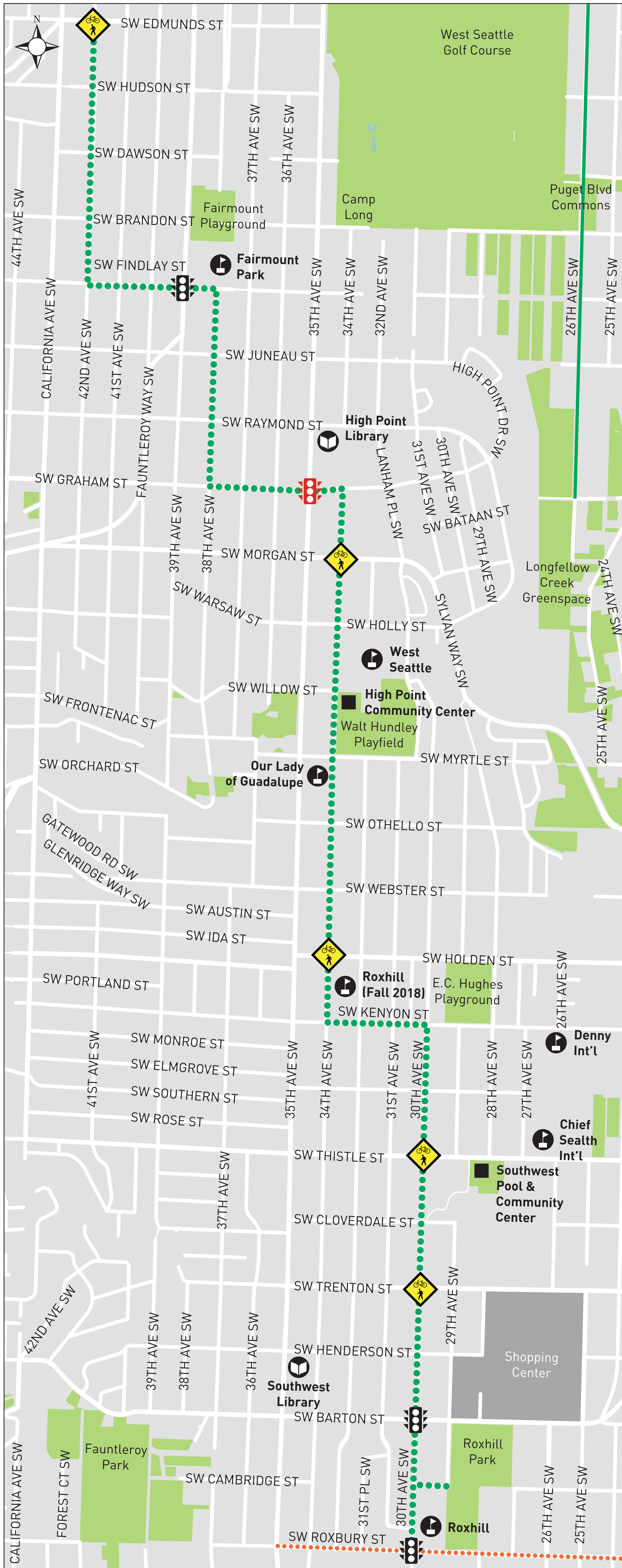


Spot Repairs of Streets and Sidewalks




- Safer for you and your family to walk and ride bikes
- Help people in wheelchairs or with strollers



MOST PROMISING ROUTE



LEGEND

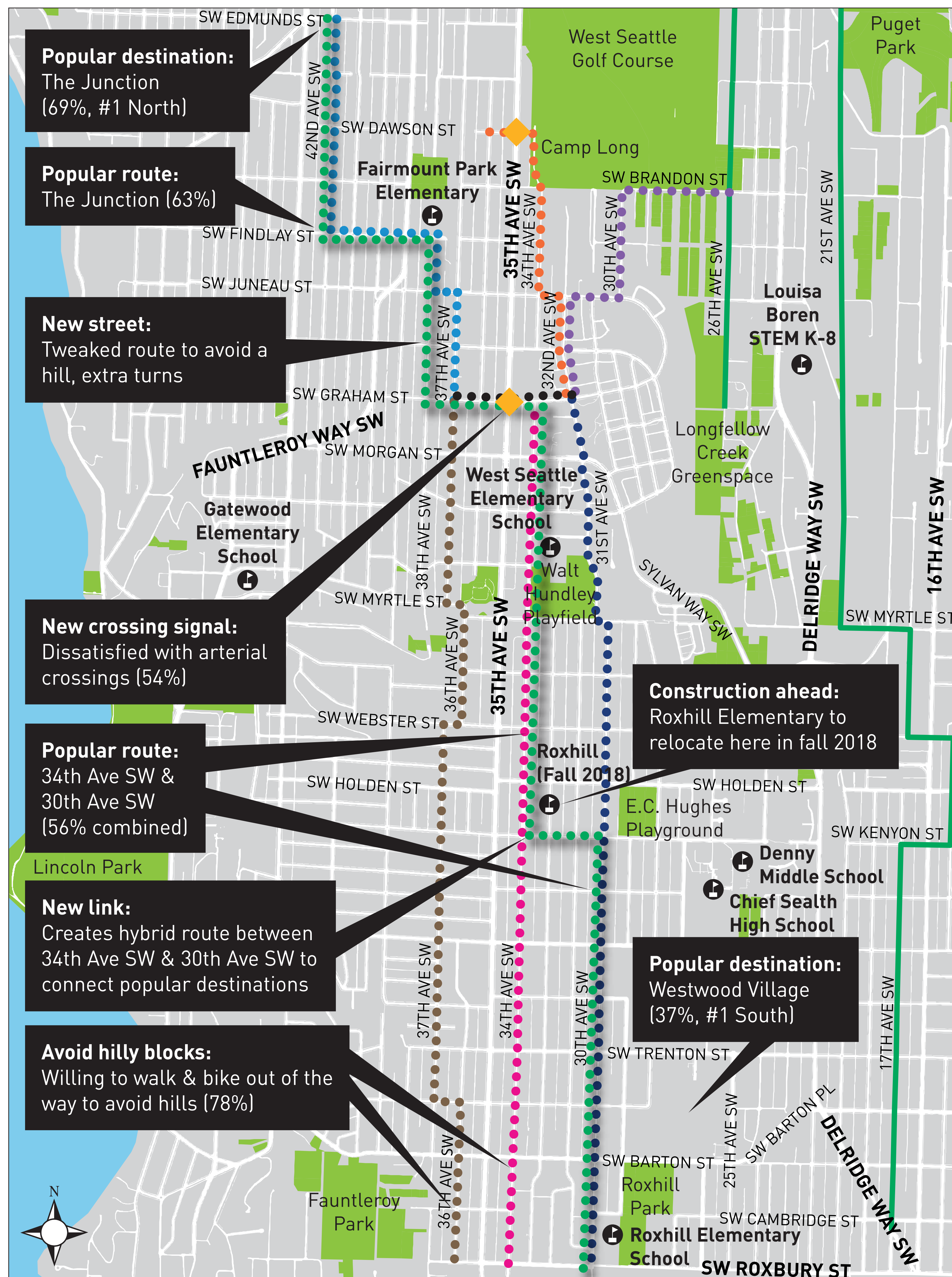
- Neighborhood Greenway Most Promising Route
- Proposed Paving Project
- Existing Family-Friendly Route*
-  Proposed Crossing Signal
-  Existing Crossing Signal to be Improved
-  Proposed Crossing Improvement

*Family-friendly routes include neighborhood greenways, protected bike lanes, and paths.



WHAT WE HEARD

ROUTE AND DESTINATION FEEDBACK



LEGEND

- North Greenway Option 1
- North Greenway Option 2
- North Greenway Option 3
- North/South Transition
- South Greenway Option 1
- South Greenway Option 2
- South Greenway Option 3
- Existing Neighborhood Greenway
- Most Promising Route
- ◆ Proposed Crossing Signal

Popular destination:
The Junction
(69%, #1 North)

Popular route:
The Junction (63%)

New street:
Tweaked route to avoid a hill, extra turns

New crossing signal:
Dissatisfied with arterial crossings (54%)

Popular route:
34th Ave SW & 30th Ave SW
(56% combined)

New link:
Creates hybrid route between 34th Ave SW & 30th Ave SW to connect popular destinations

Avoid hilly blocks:
Willing to walk & bike out of the way to avoid hills (78%)

Construction ahead:
Roxhill Elementary to relocate here in fall 2018

Popular destination:
Westwood Village
(37%, #1 South)

GENERAL FEEDBACK

Top barriers to biking:

- Lack of bike facilities (69%)
- Hard to cross busy streets (68%)
- Difficult to find right route (63%)

Most important transportation values:

- Safe (90%)
- Interconnected (80%)
- Affordable (68%)

Walk & bike route priorities

- Least traffic (#1)
- Least hills (#2)
- Safer crossings (#3)

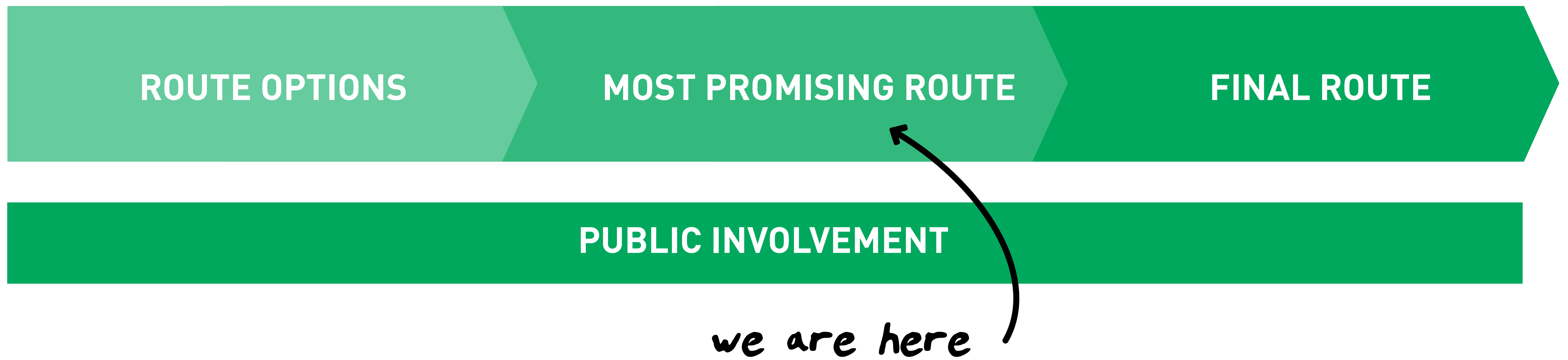
Neighborhood bike routes today:

- Dissatisfied (45%)

WHAT'D WE MISS? LET US KNOW.



PLANNING PROCESS



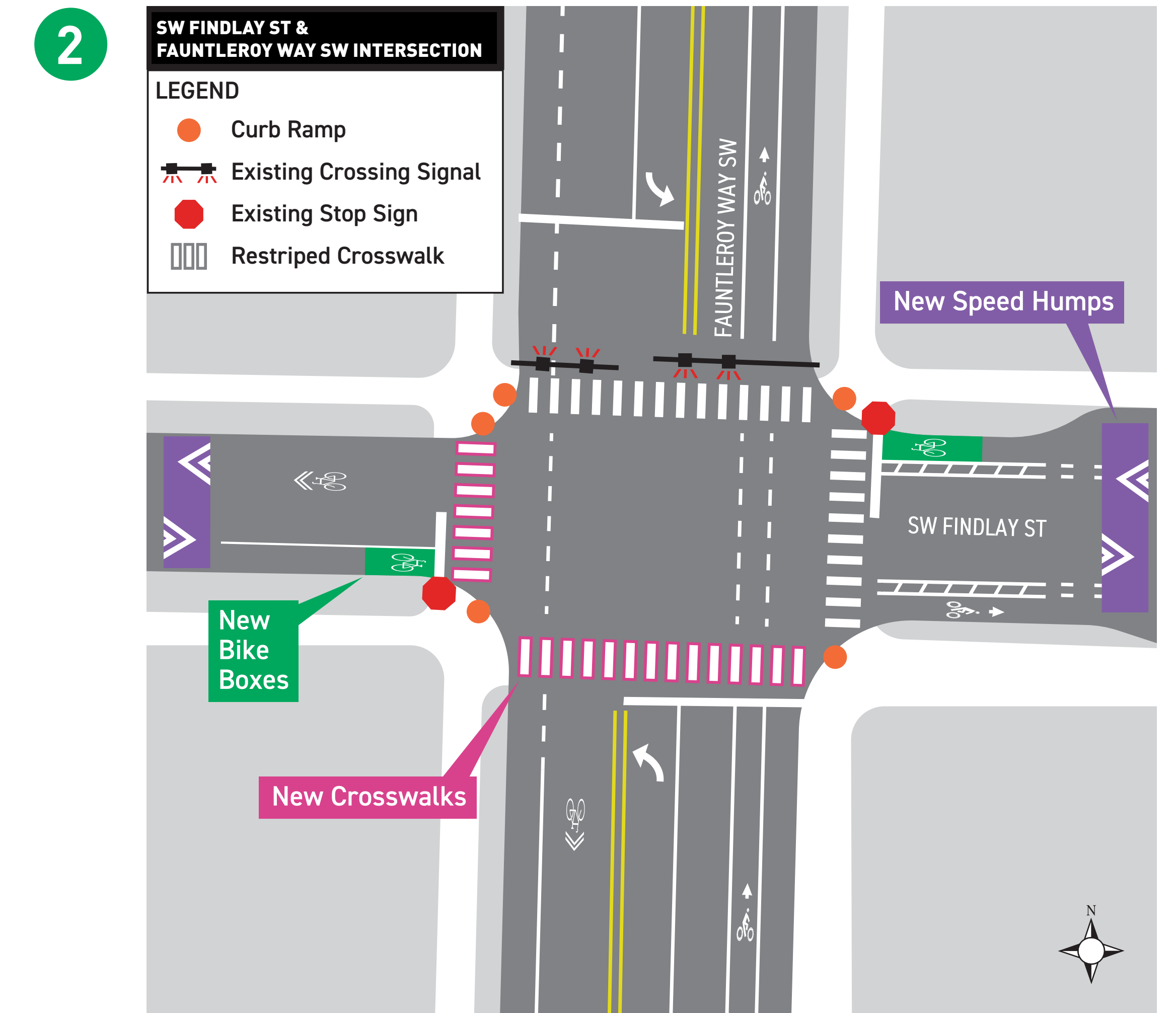
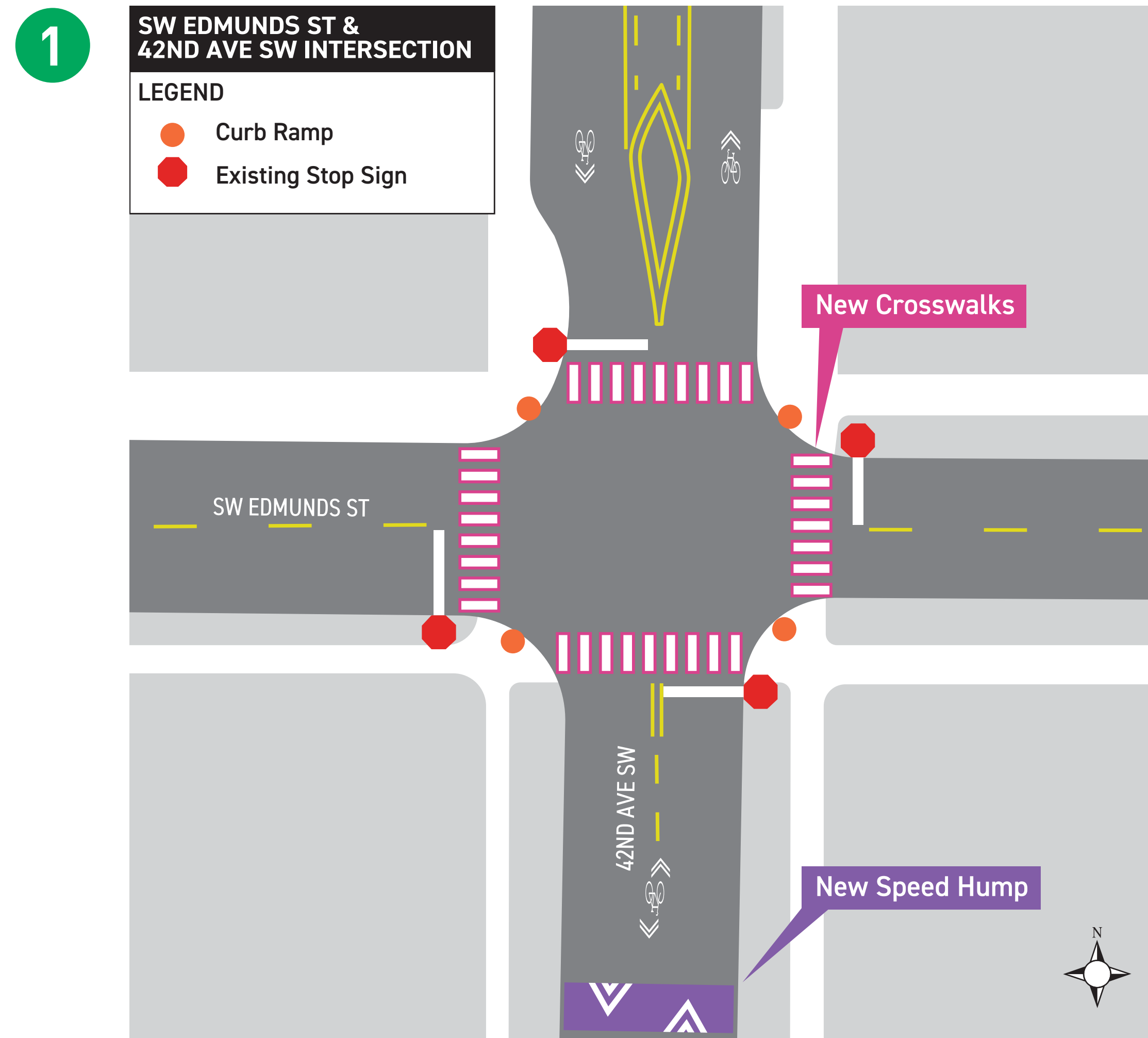
Selecting the most promising route:

	SOUTHERN OPTIONS			
	Option 1: 30th Ave SW	Option 2: 34th Ave Sw	Option 3: 37th Ave SW	Hybrid route
1. SAFETY				
Vehicle volume & type	●	●	▲	●
Traffic speed	●	▲	●	●
Collision history (3 year)	▲	▲	●	▲
Ease of arterial crossings	●	▲	■	●
2. ROUTE CONDITIONS				
Slope of existing street	●	▲	■	●
Route continuity (directness & connection to existing facilities)	▲	●	▲	▲
Condition of roadway surface, drainage and sidewalk	▲	●	●	●
3. COMMUNITY SUPPORT				
Level of supportive feedback	●	●	■	●
Access to schools & transit	●	●	▲	●
Destinations (parks, libraries, urban village, etc)	●	▲	▲	●
SUMMARY				
● = 10 points	7	5	3	8
▲ = 5 points	3	5	4	2
■ = 0 points	0	0	3	0
TOTAL POINTS	85	75	53	90

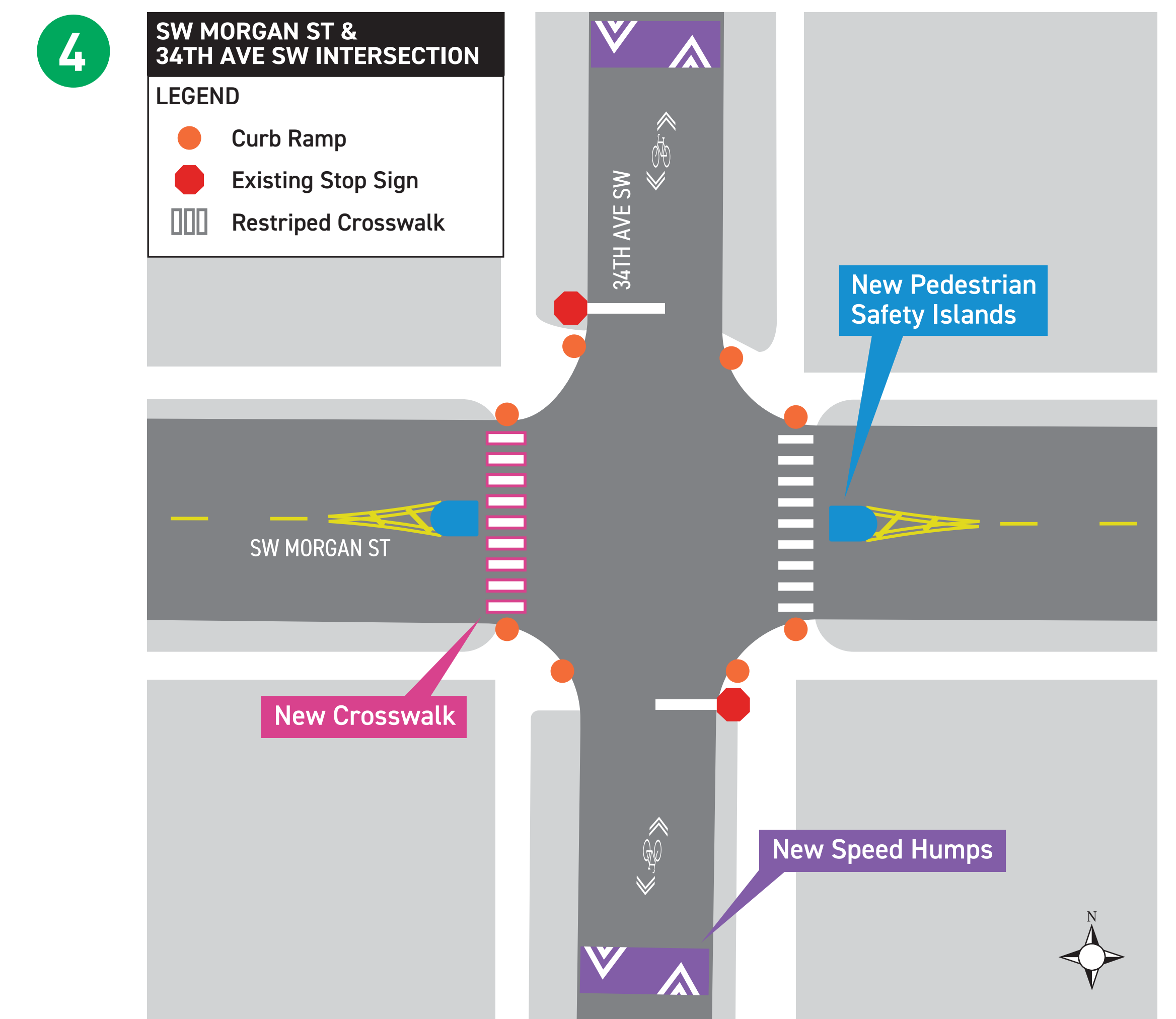
Winner! Combining options 2 & 3 gave us the best score.



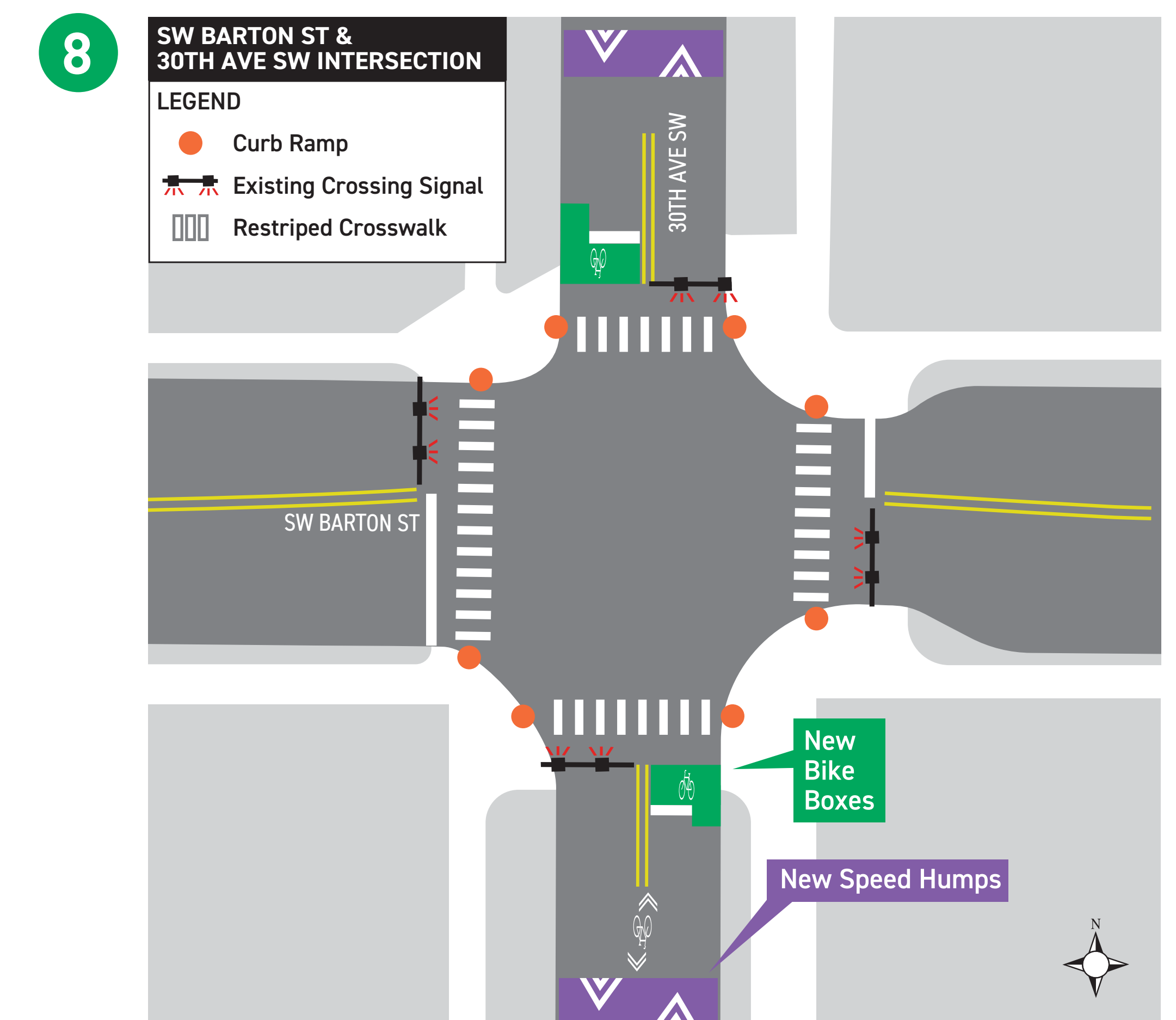
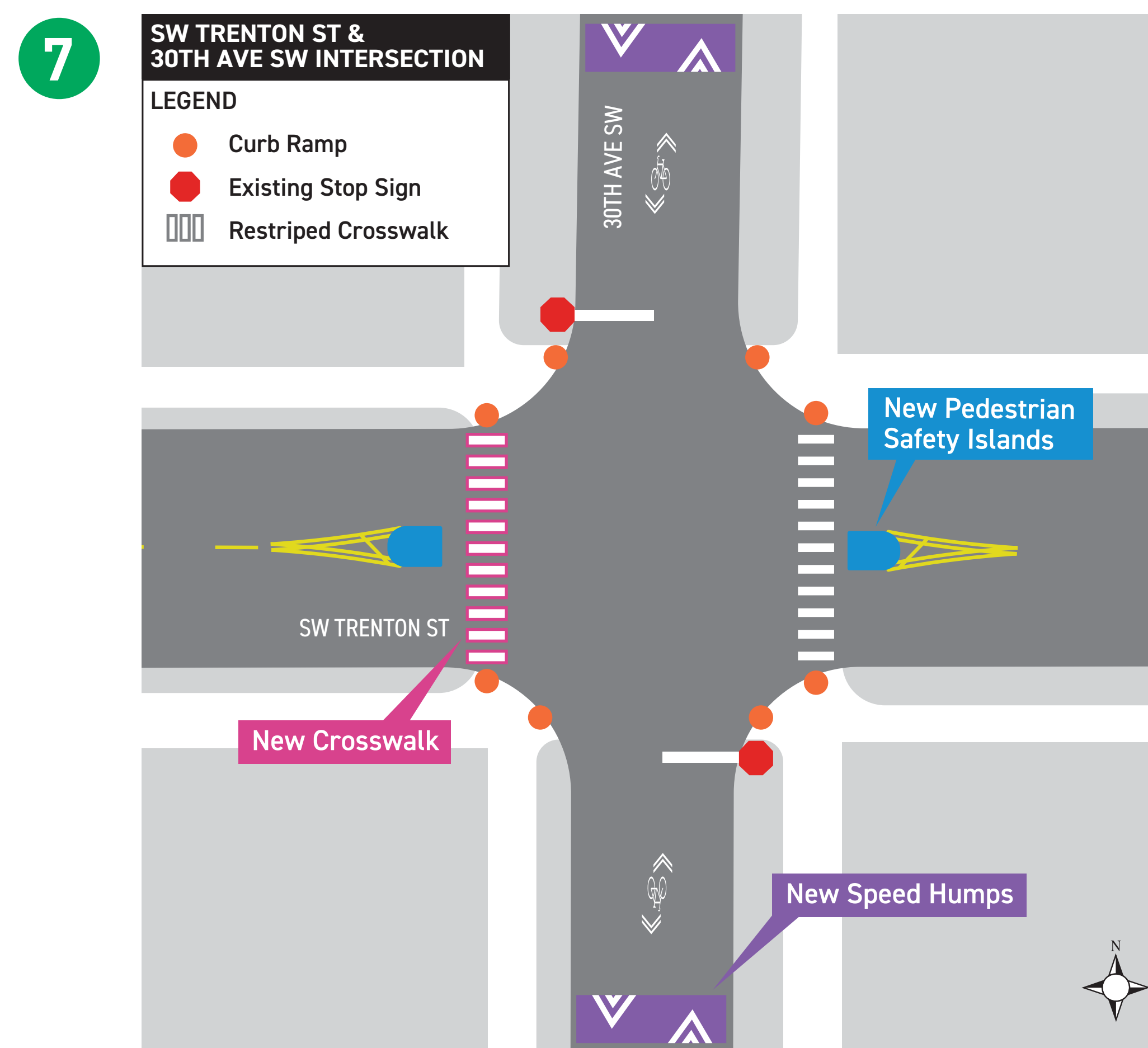
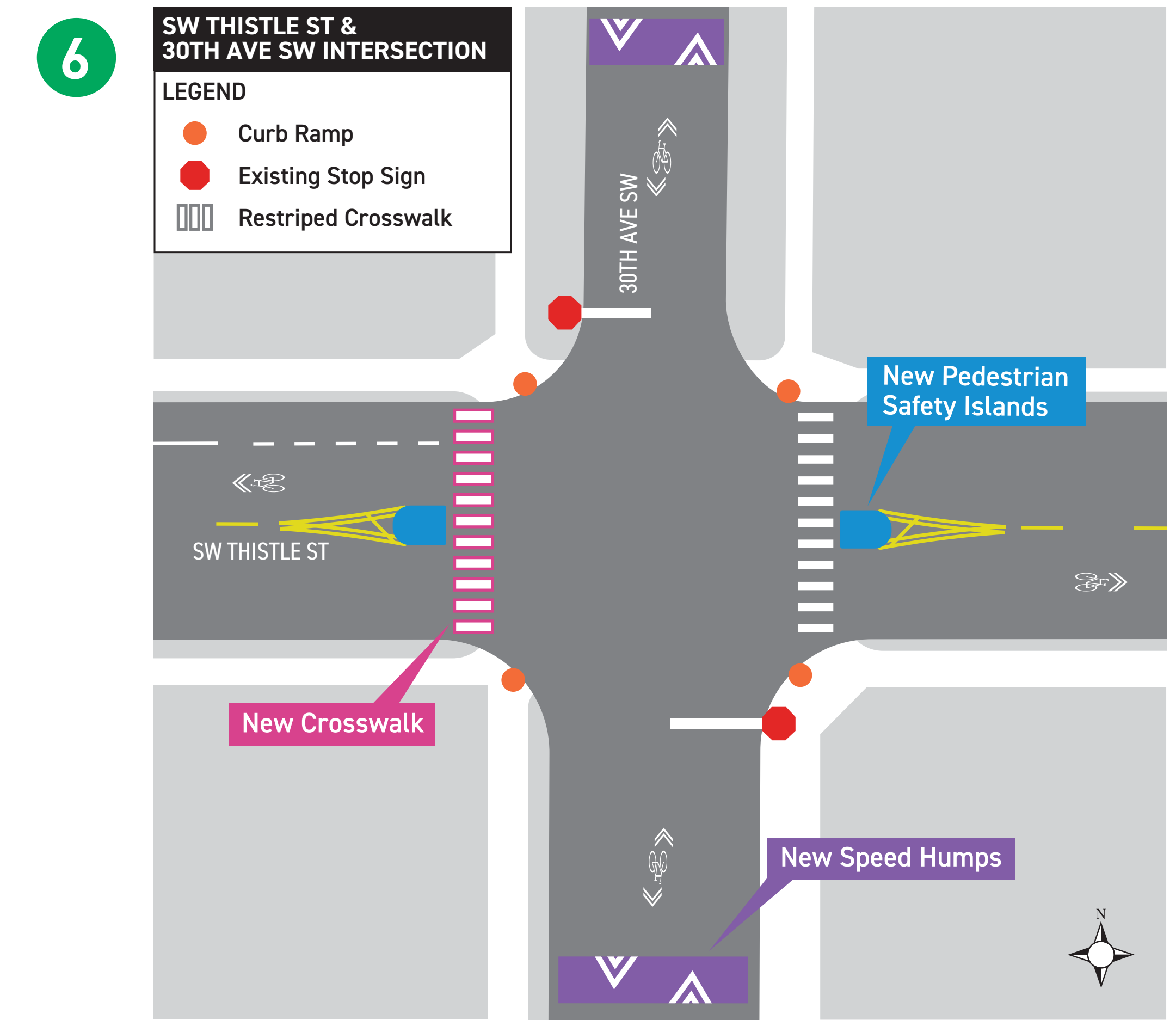
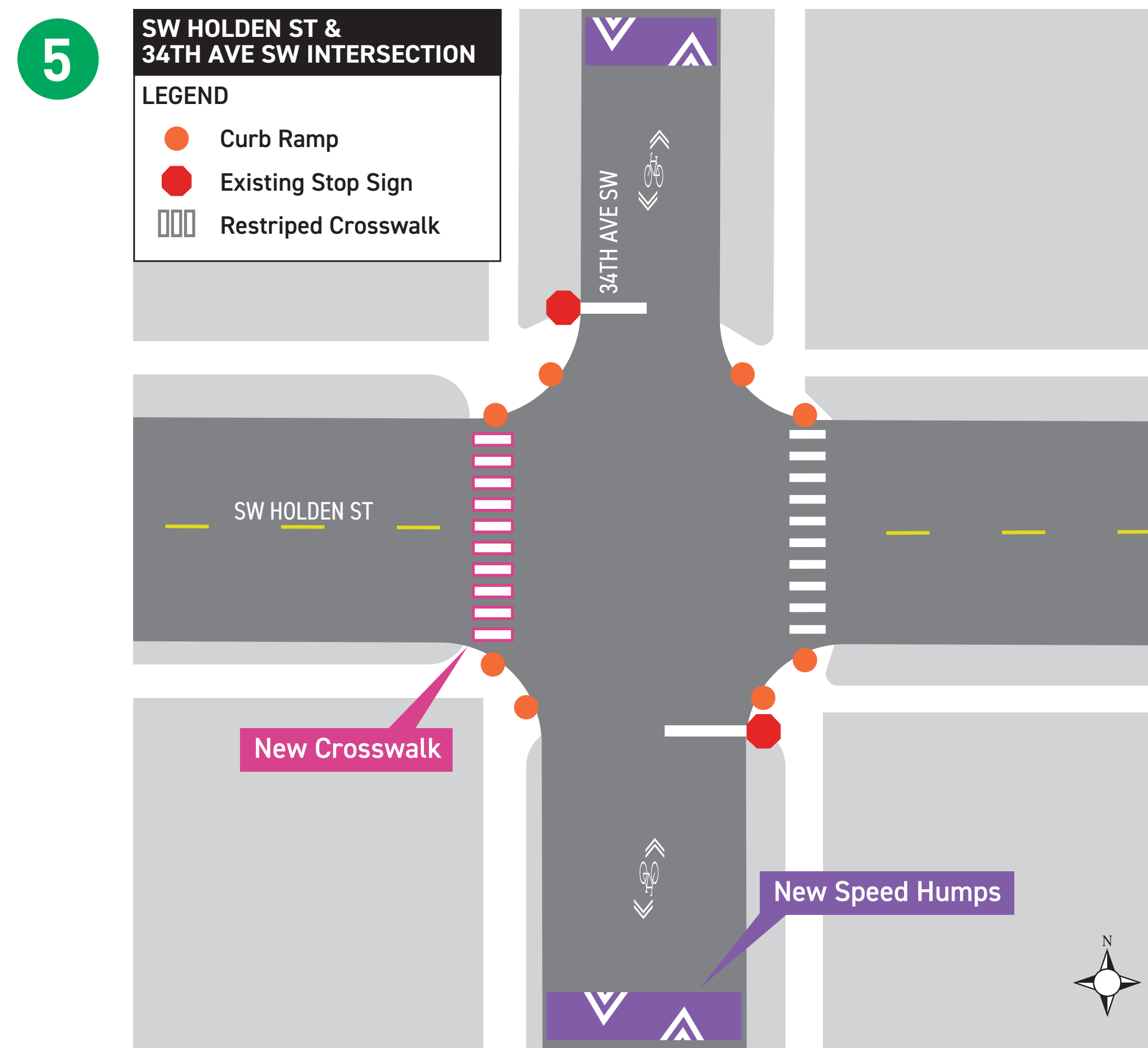
NORTH - INTERSECTION IMPROVEMENTS



3 Map and 3D sketch of the new signal proposed for SW Graham St and 35th Ave SW is on a separate display board.



SOUTH - INTERSECTION IMPROVEMENTS



9 NOTE: SW Roxbury St is scheduled for street reconstruction and new lane layout as soon as 2019. This neighborhood greenway will be designed to connect to any future bike facility on SW Roxbury St as safely and predictably as possible.



35TH AVE SW & SW GRAHAM ST

INTERSECTION IMPROVEMENT

