



32ND AVE NW

RED MILL
TOTEM
HOUSE

NW 54TH ST

ADD LEFT TURN POCKET

GREEN PAVEMENT MARKING
LANDSCAPED AREA
KING COUNTY METRO BUS STOP

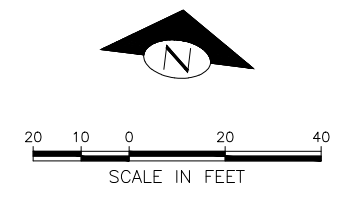
12' SHARED USE TRAIL
6' SIDEWALK
BEGIN MIXING ZONE
USE R9-6 (BIKES YIELD TO
PEDS) SIGN

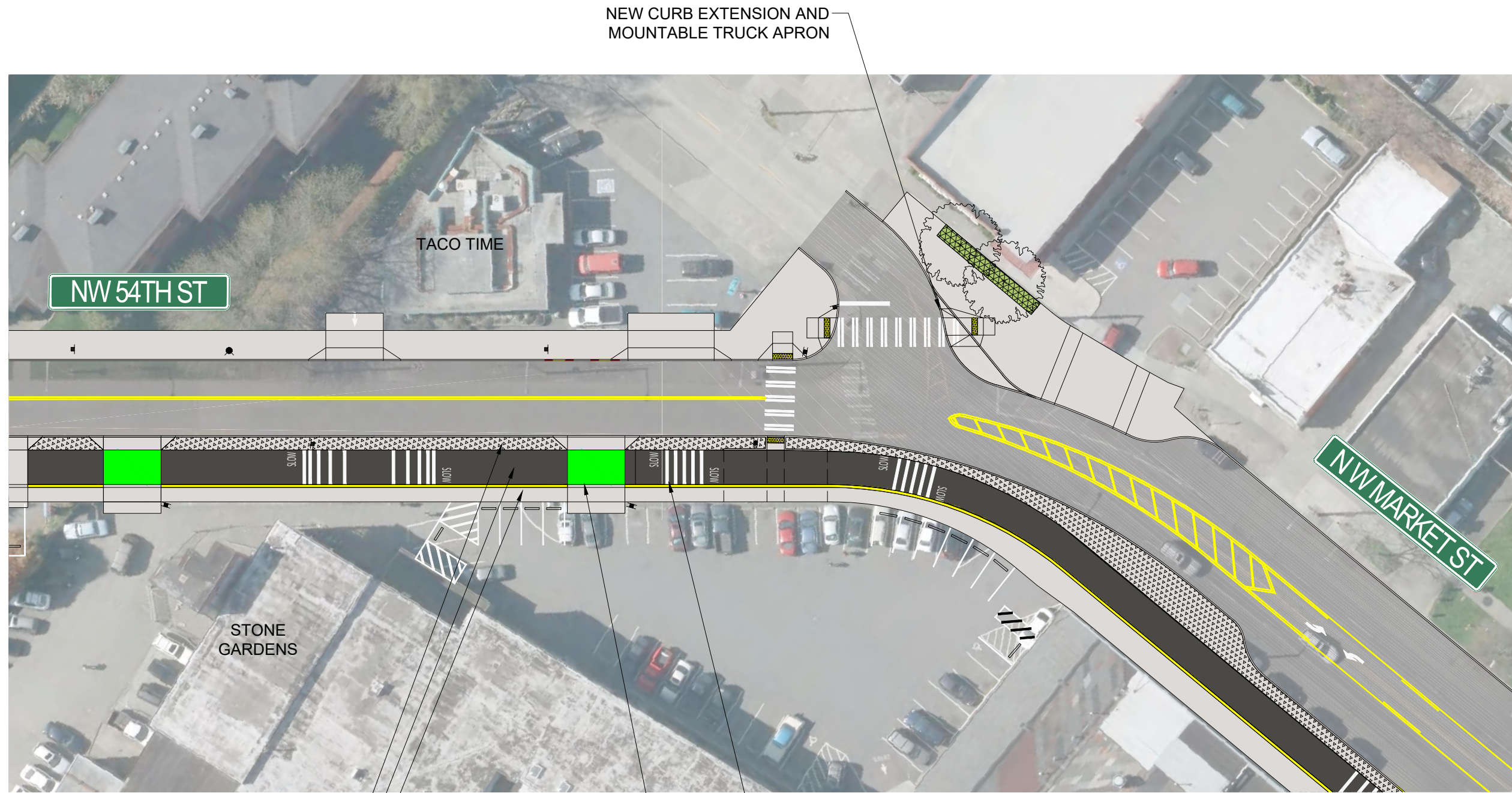
CHANGE DRIVE AISLE TO
EASTBOUND ONLY

5' SIDEWALK
9' TWO-WAY BIKE FACILITY
(MATCHES BURKE-GILMAN
TRAIL TO THE WEST)

BEGIN MIXING ZONE
USE R9-6 (BIKES YIELD
TO PEDS) SIGN

TO HIRAM M.
CHITTENDEN LOCKS





NEW CURB EXTENSION AND MOUNTABLE TRUCK APRON

TACO TIME

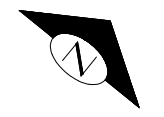
NW 54TH ST

NW MARKET ST

STONE GARDENS

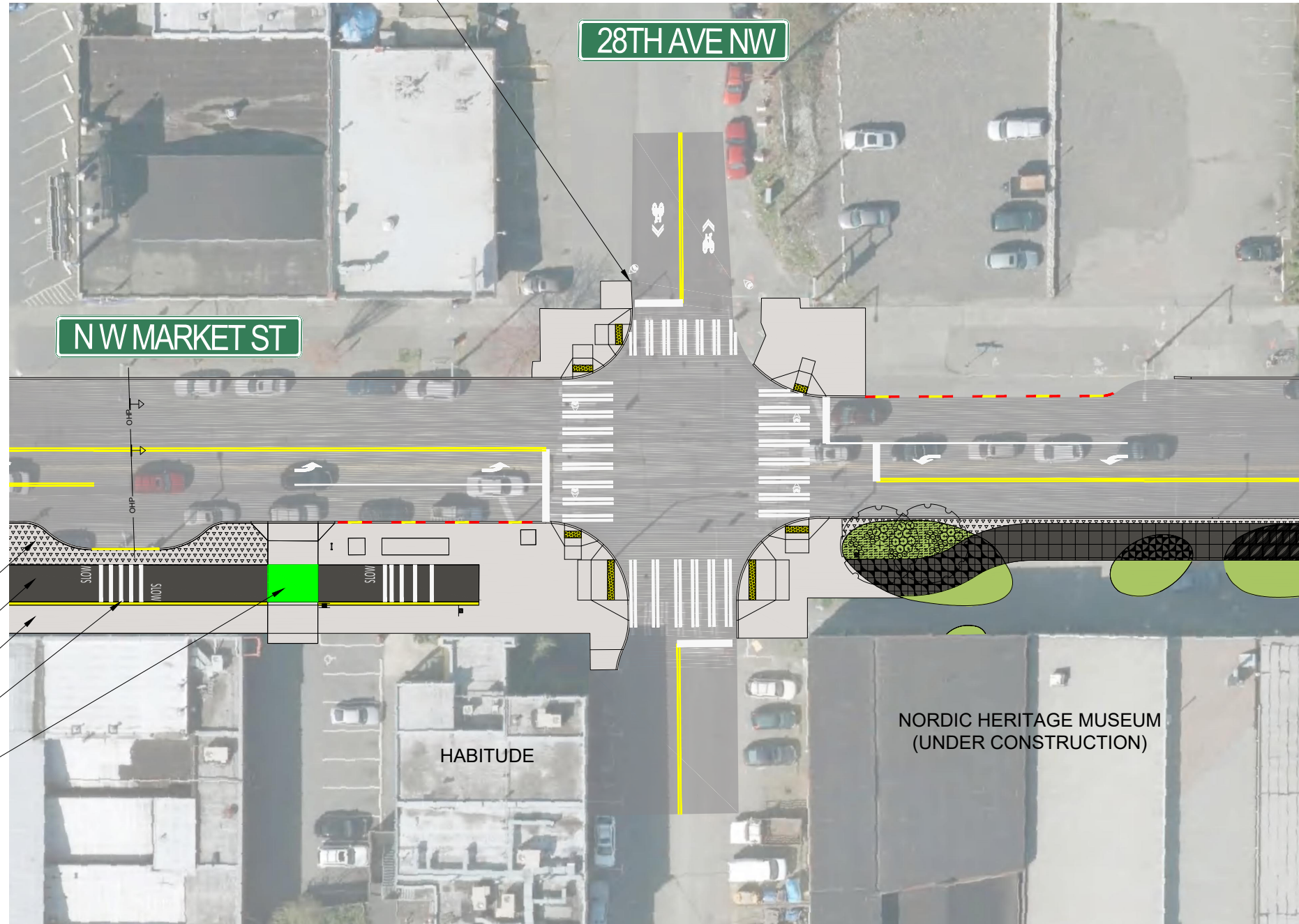
5' STREET BUFFER
 12' SHARED USE TRAIL
 6' SIDEWALK

TRAIL MARKINGS
 GREEN PAVEMENT MARKING

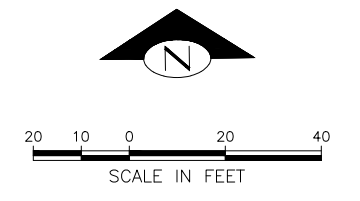


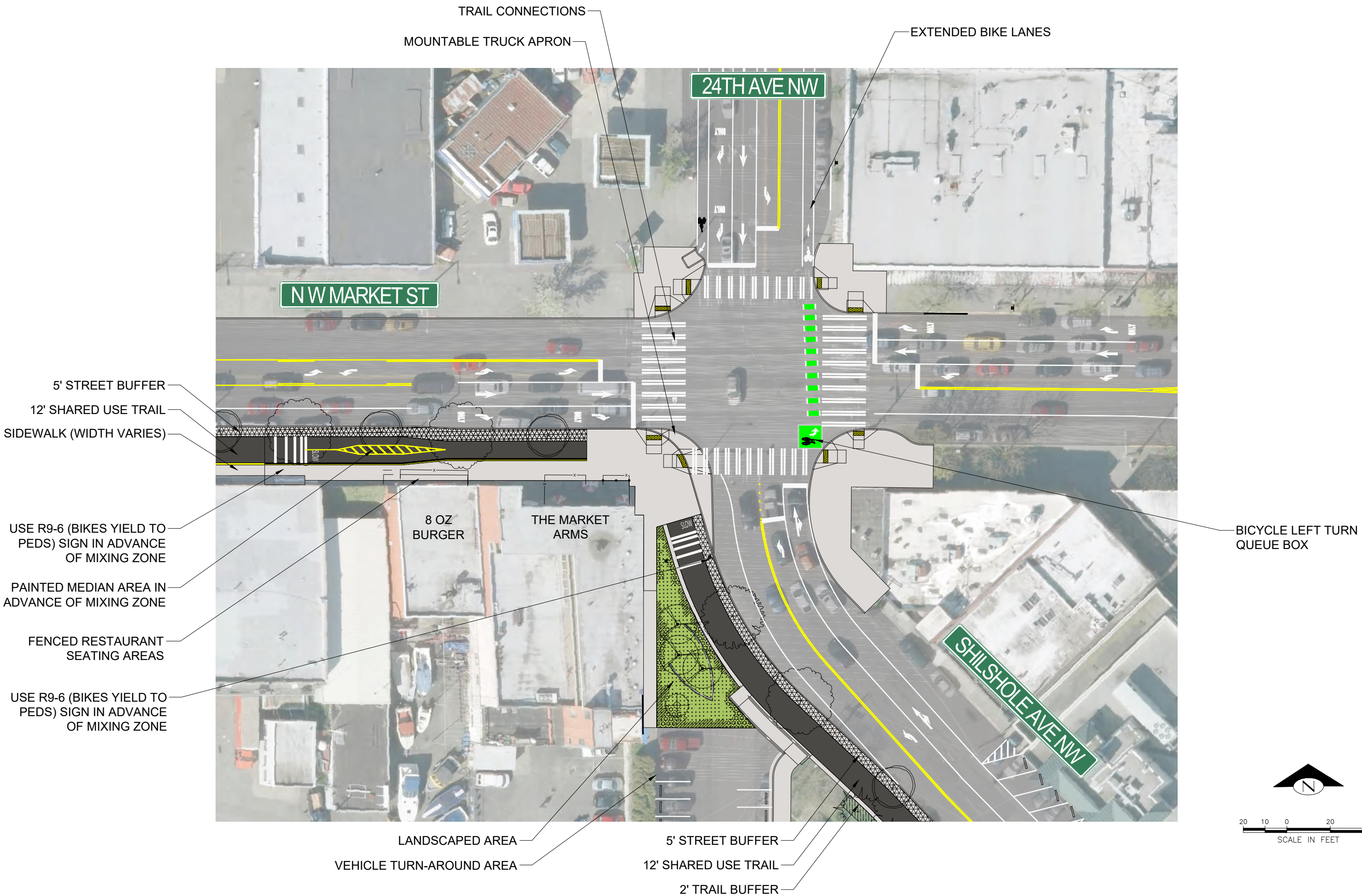
20 10 0 20 40
 SCALE IN FEET

BIKE RAMP FOR CONNECTION TO 28TH AVE NW
NEIGHBORHOOD GREENWAY



- 5' STREET BUFFER
- 12' SHARED USE TRAIL
- 10' SIDEWALK
- TRAIL MARKINGS
- GREEN PAVEMENT MARKING





5' STREET BUFFER
12' SHARED USE TRAIL
2' TRAIL BUFFER

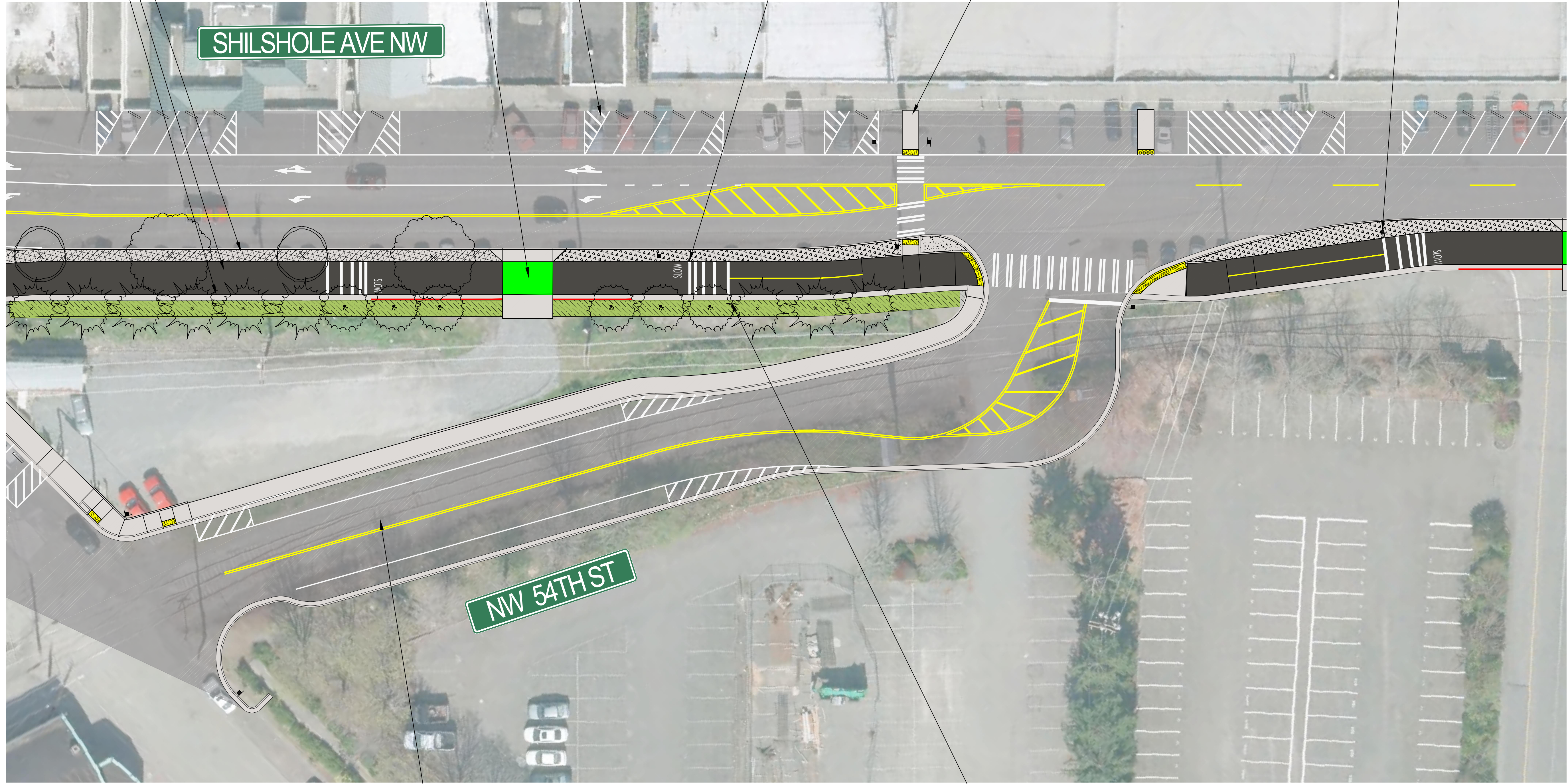
GREEN PAVEMENT MARKING

ANGLED
PARKING

TRAIL MARKINGS

PEDESTRIAN CROSSING
AND FLASHING BEACON

LED FLASHING SIGN

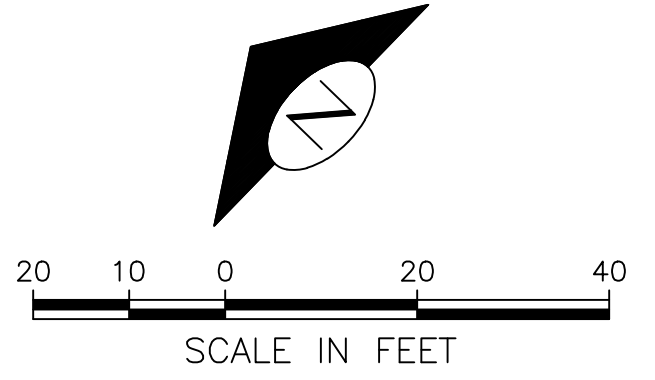


SHILSHOLE AVE NW

NW 54TH ST

NEW STREET

LED FLASHING SIGN



ANGLED PARKING

22ND AVE NW

SHILSHOLE AVE NW

NW VERNON PL



5' STREET BUFFER

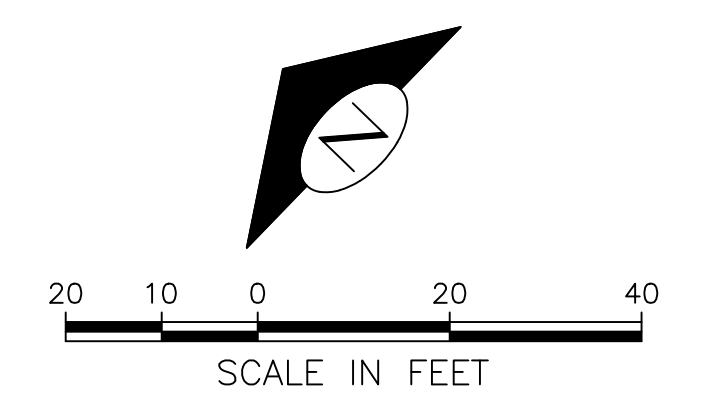
12' SHARED USE TRAIL

2' TRAIL BUFFER

NEW SIGNAL AT NW
VERNON PL



LED FLASHING SIGN





LED FLASHING SIGN

5' STREET BUFFER

12' SHARED USE TRAIL

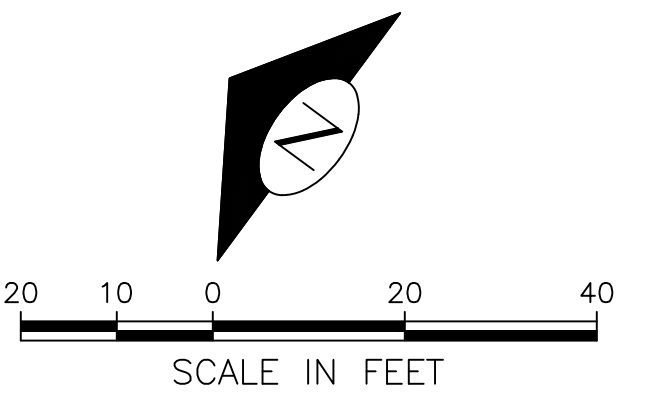
2' TRAIL BUFFER

LED FLASHING SIGNS



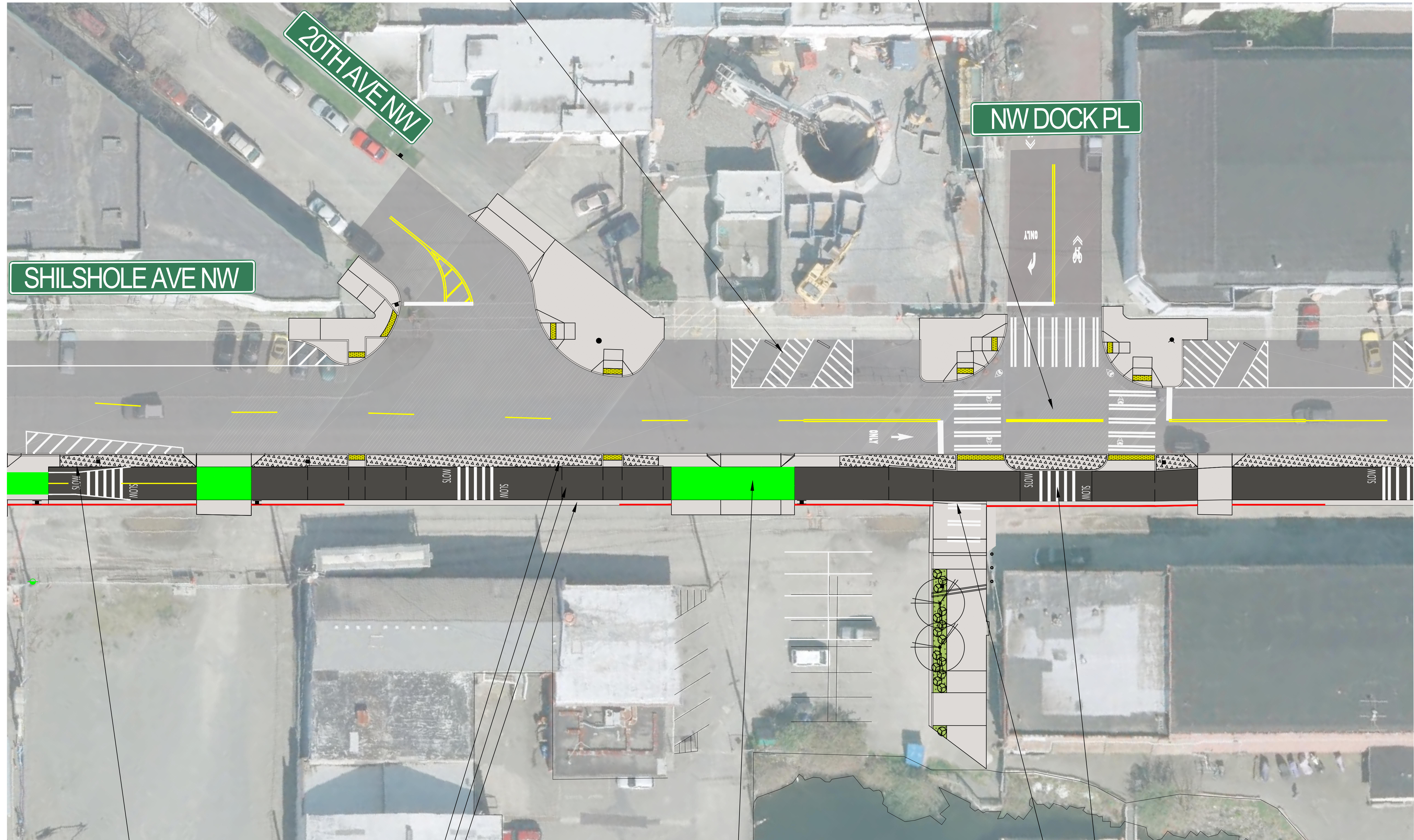
GREEN PAVEMENT MARKING

LED FLASHING SIGN



ANGLED PARKING

NEW PEDESTRIAN SIGNAL FOR CONNECTION TO 17TH AVE NW NEIGHBORHOOD GREENWAY



SHILSHOLE AVE NW

20TH AVE NW

NW DOCK PL



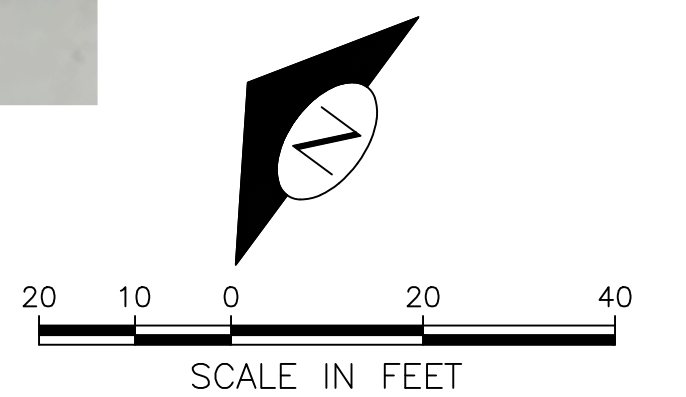
LED FLASHING SIGN

5' STREET BUFFER
 12' SHARED USE TRAIL
 2' TRAIL BUFFER

GREEN PAVEMENT MARKING

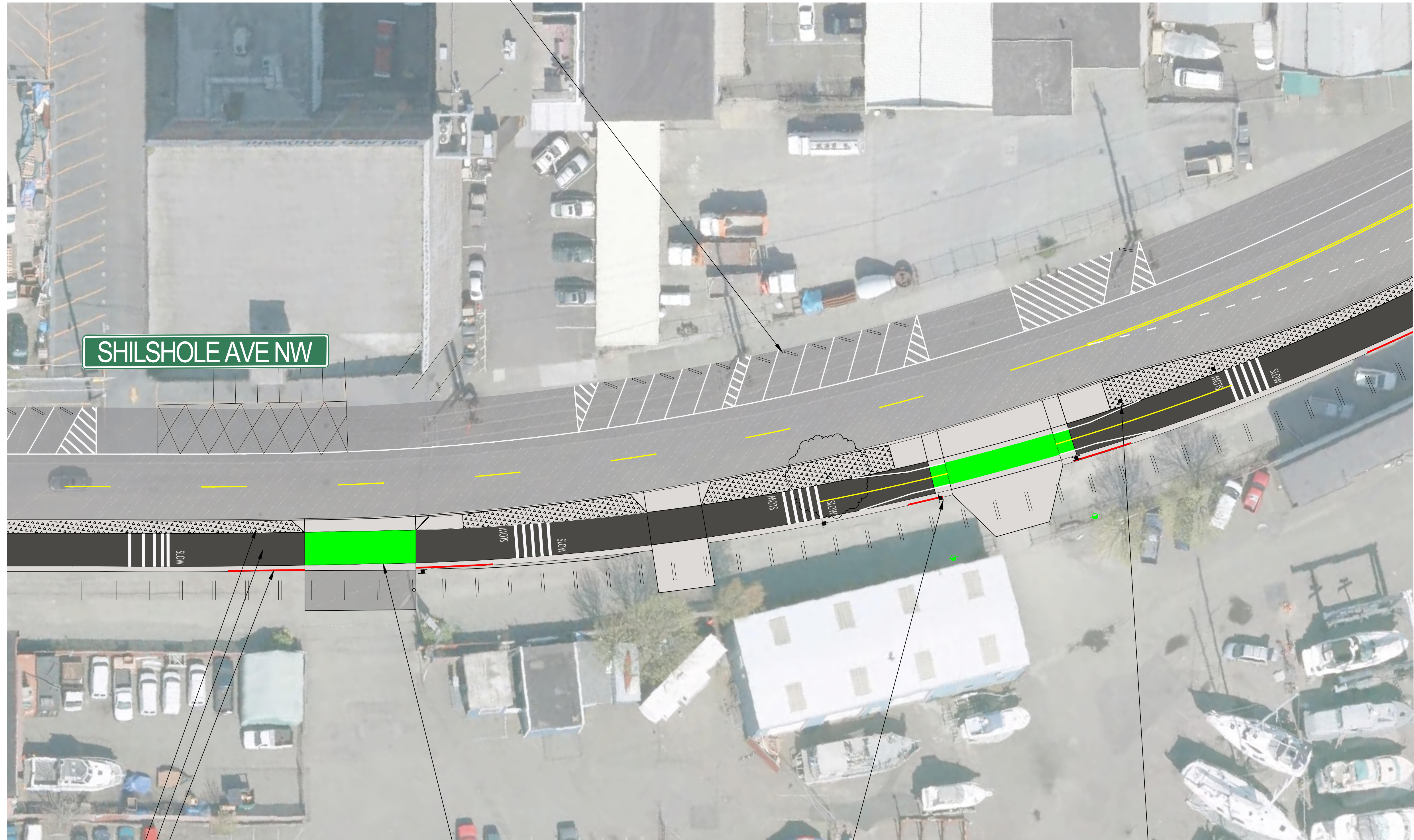
NEW BICYCLE AND PEDESTRIAN
 CONNECTION TO THE 20TH AVE NW
 STREET END PARK

TRAIL MARKINGS



ANGLED PARKING

SHILSHOLE AVE NW



5' STREET BUFFER
 12' SHARED USE TRAIL
 2' TRAIL BUFFER

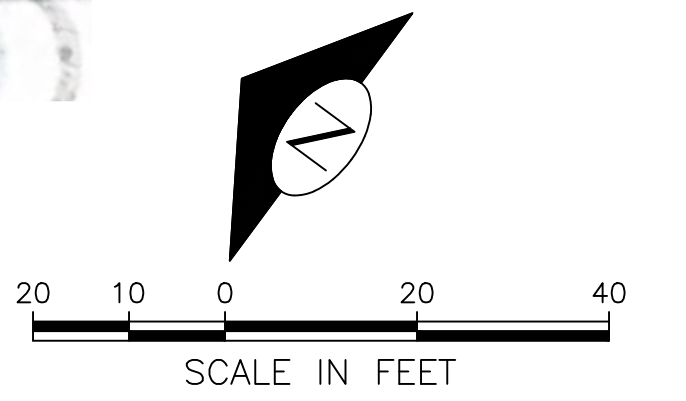
GREEN PAVEMENT MARKING

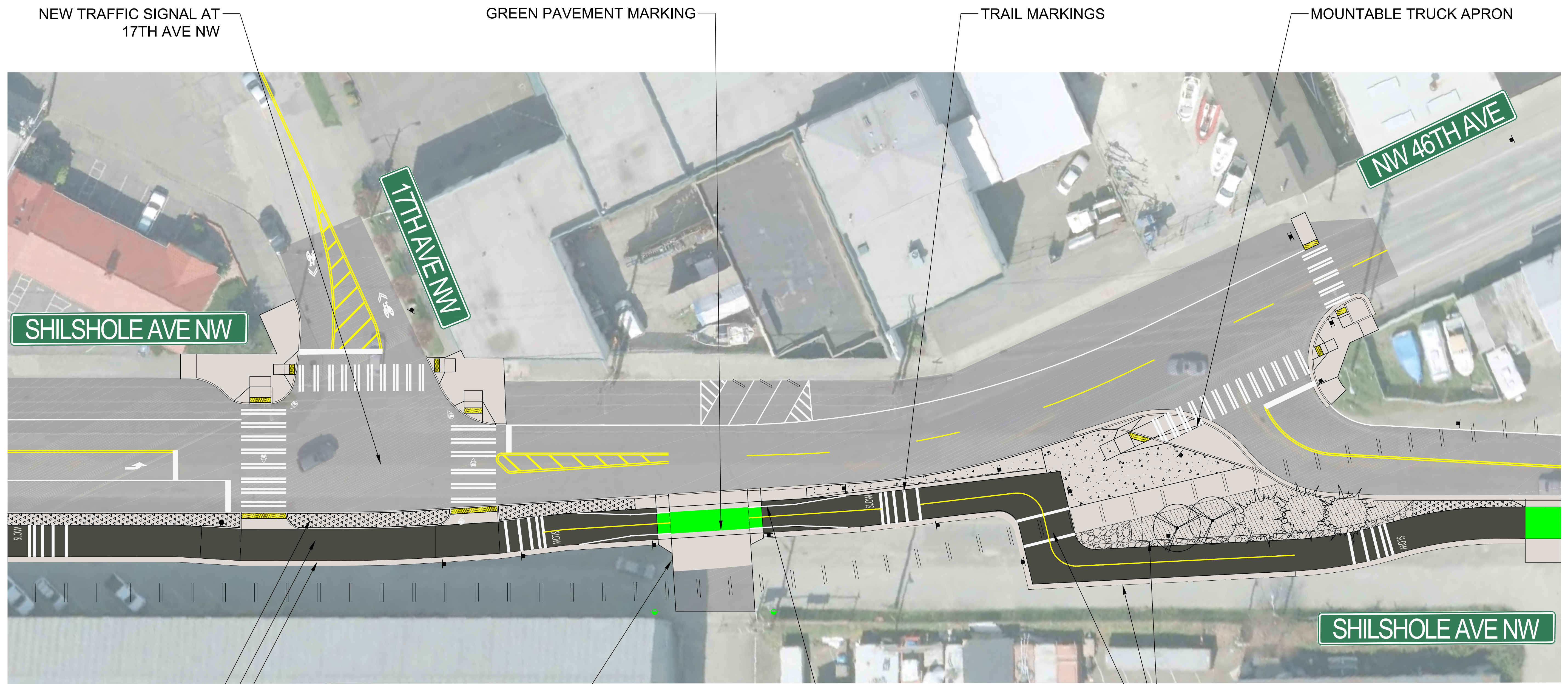


LED FLASHING SIGN



LED FLASHING SIGN





NEW TRAFFIC SIGNAL AT
17TH AVE NW

GREEN PAVEMENT MARKING

TRAIL MARKINGS

MOUNTABLE TRUCK APRON

SHILSHOLE AVE NW

17TH AVE NW

NW 46TH AVE

SHILSHOLE AVE NW

5' STREET BUFFER
12' SHARED USE TRAIL
2' TRAIL BUFFER

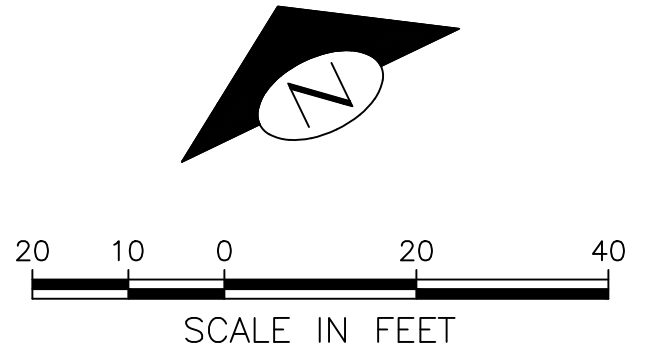


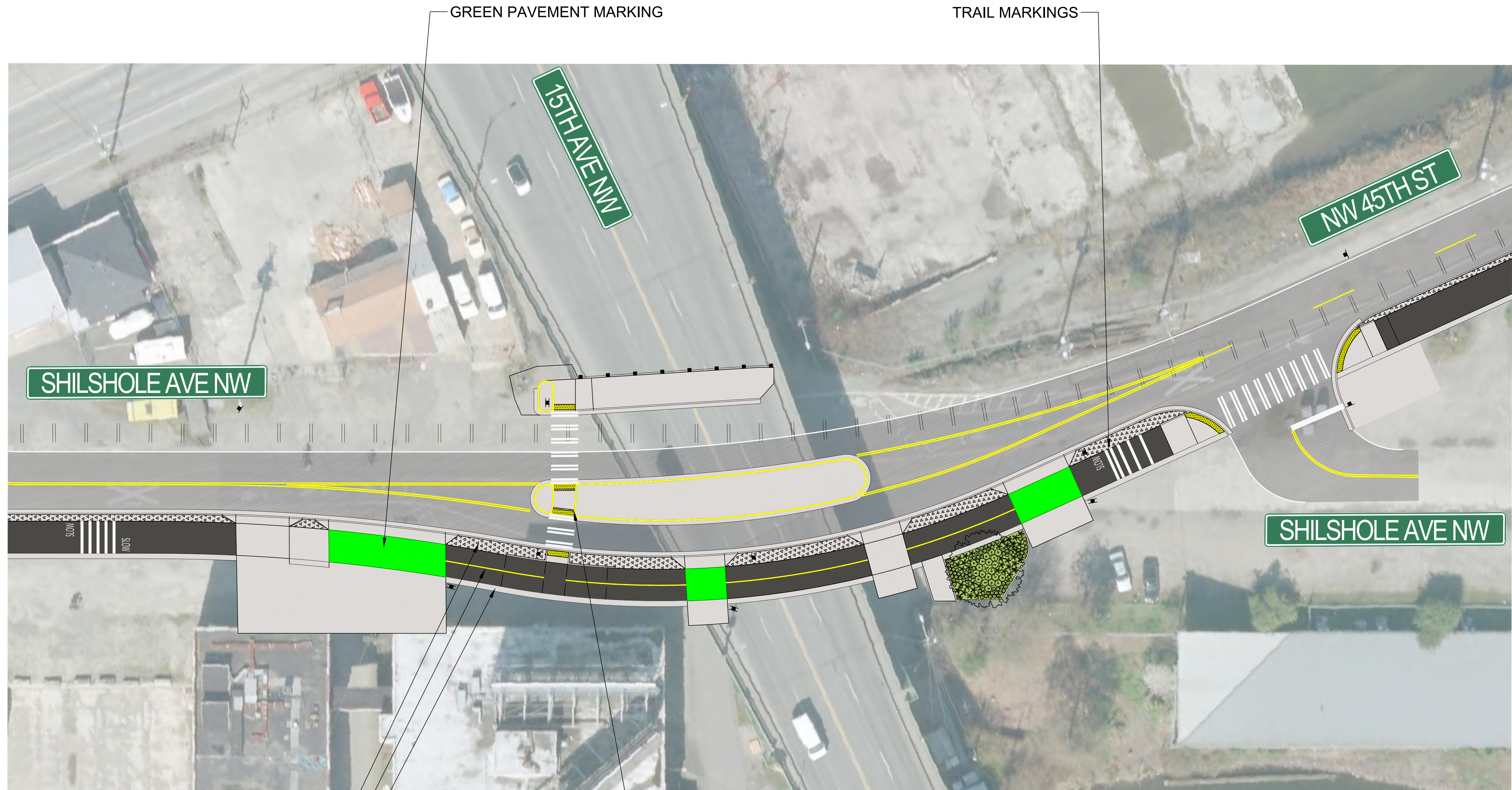
LED FLASHING SIGN

LED FLASHING SIGN



FENCING ALONG RAILROAD
NEW RAILROAD ALIGNMENT
AND TRAIL CROSSING



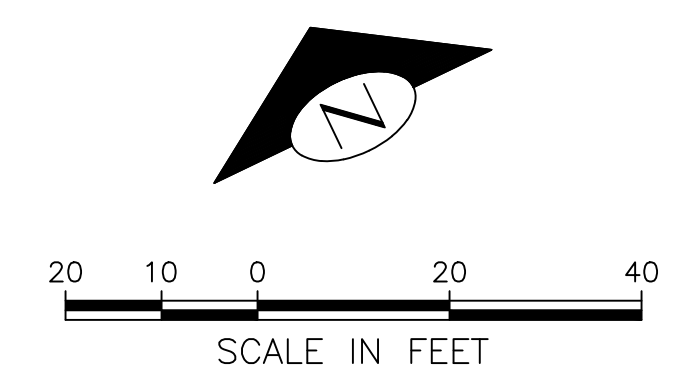


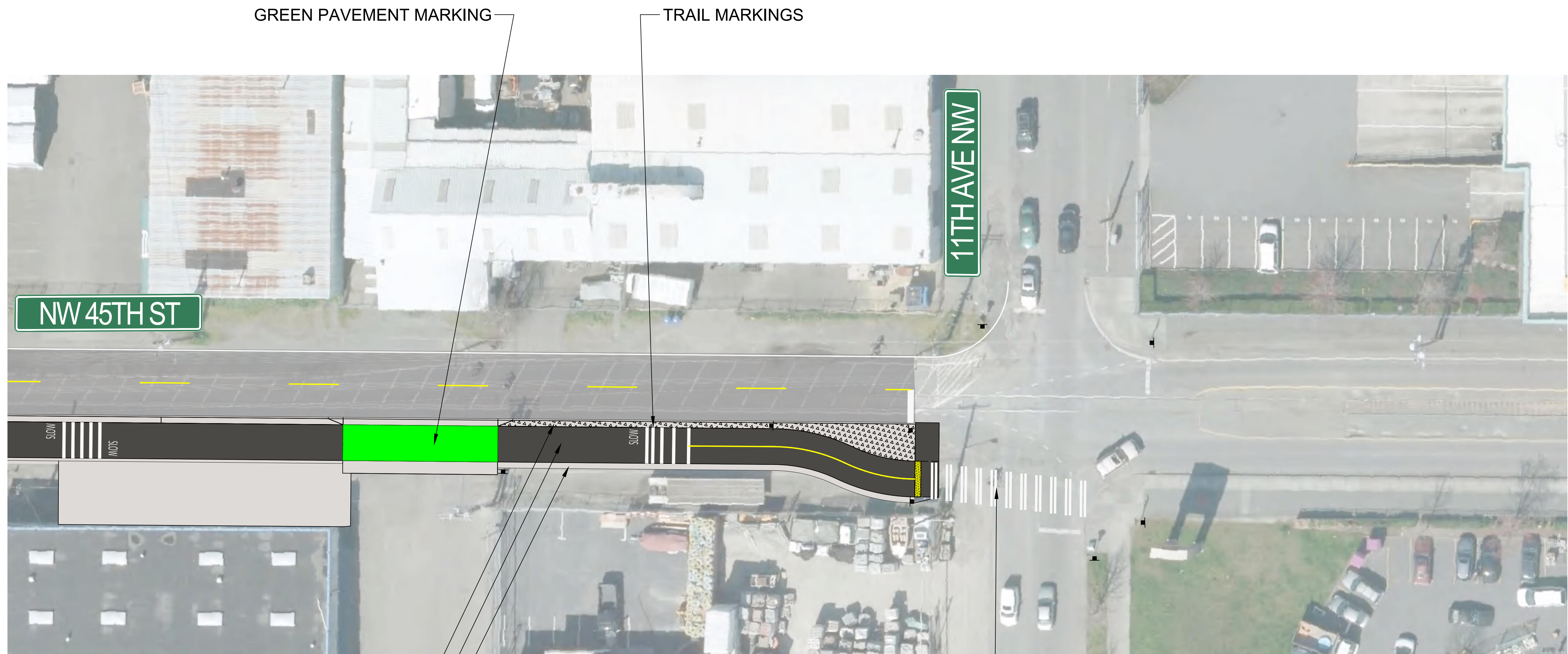
5' STREET BUFFER

12' SHARED USE TRAIL

2' TRAIL BUFFER

NEW BICYCLE AND PEDESTRIAN CONNECTION TO PATH ADJACENT TO BALLARD BRIDGE





GREEN PAVEMENT MARKING

TRAIL MARKINGS

NW 45TH ST

11TH AVENUE NW

2' STREET BUFFER
12' SHARED USE TRAIL
2' TRAIL BUFFER

CONNECTION TO EXISTING TRAIL



20 10 0 20 40
SCALE IN FEET