

**MATERIAL SCHEDULE**

- ① PEDESTRIAN CONC. PAVING; SDOT SCORE PATTERN
- ⑩ PEDESTRIAN CONC. PAVING; T.A.G. SCORE PATTERN
- ② VEHICULAR CONCRETE PAVING- DRIVEWAY
- ③ PARKING STRIPING, TYP.
- ④ ±6" CONCRETE CURB
- ④a ±2" CURB PERER TERRY AVE. GUIDELINES T.A.G.
- ⑤ SAND-SET UNIT PAVERS ON CONC. SLAB PER T.A.G.
- ⑥ CONCRETE PEDESTAL PAVERS I
- ⑦ NOT USED
- ⑧ IPE WOOD PAVING
- ⑨ TREE WELL PLANTER W/ ROOT BARRIER, TYP.
- ⑩ PLANTING AREA ON STRUCTURE: WALLFLOWER, BLUE STAR JUNIPER, BLACK MONDO GRASS, IRISH MOSS, YELLOW SEDUM
- ⑪ PLANTING AREA ON GRADE: OREGON GRAPE, HEBE GLAUCA, CAREX MORROWI 'ICE DANCE', EUPHORBIA ROBBIA, KELSEY DOGWOOD & SPIRAEA JAPONICA
- ⑫ PLANTING AREA ON ROOF, MIN 4" SOIL DEPTH W/ AUTOMATIC IRRIGATION & ROUND RIVER ROCK EDGING
- ⑬ CONCRETE STAIRS W/ S.S. HANDRAIL
- ⑬c CONCRETE SCULPTURAL SEATING AREA
- ⑭ PRECAST CONCRETE BENCH/WALL
- ⑮ CONCRETE PLANTER WALL
- ⑮a COR-TEN STEEL PLANTER WALL
- ⑯ BENCH W/ BACK & ARM RESTS
- ⑰ TRASH RECEPTACLE PER T.A.G., TYP.
- ⑱ BICYCLE RACK PER T.A.G., TYP.
- ⑲ BOLLARD PER T.A.G., TYP.
- ⑳ ORNAMENTAL STREET LIGHT POLE PER T.A.G., TYP.-SEE ELEC.
- ㉑ CONCRETE STAIRS FOR RAIN GARDEN
- ㉒ RAIN GARDEN W/ CONCRETE WEIRS/BENCHES
- ㉓ POST & CABLE TRELIS FOR VINES/GREEN WALL
- ㉔ STORMWATER OVERFLOW DEVICE
- ㉕ PROPOSED TREES, MIN. 2.5" CALIPER  

STREET	COMMON/ BOTANICAL NAME
HARRISON ST.-	YELLOWWOOD CLADASTRIS LUTEA
THOMAS ST.-	LITTLE LEAF LINDEN/ TILIA CORDATA
BOREN AVE.-	TUPELO, STRONG LEADER/ NYSSA SYLVATICA
TERRY AVE.-	TULIP TREE/ LIRIODENDRON TULIPIFERA KATSURA/ KATSURA JAPONICA MAGNOLIA/ MAGNOLIA KOBUS
- ㉖ SPECIMEN TREE MIN. 14" CALIPER

**VULCAN**  
 OWNER:  
**CITY PLACE IV L.L.C.**  
 505 5th Ave S, Suite 900  
 Seattle, WA 98104  
 T 206 342 2000  
 F 206 342 3000

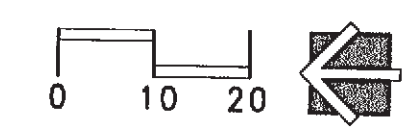
**WALKER-MACY**  
 CONSULTANT:  
 111 SW Oak Street  
 Portland, OR 97204  
 T 503 228 3122  
 F 503 273 8878  
 www.walkermacy.com

**CALLISON**  
 1420 Fifth Avenue # 2400  
 Seattle, WA 98101-2343  
 T 206 623 4646  
 F 206 623 4625  
 www.callison.com

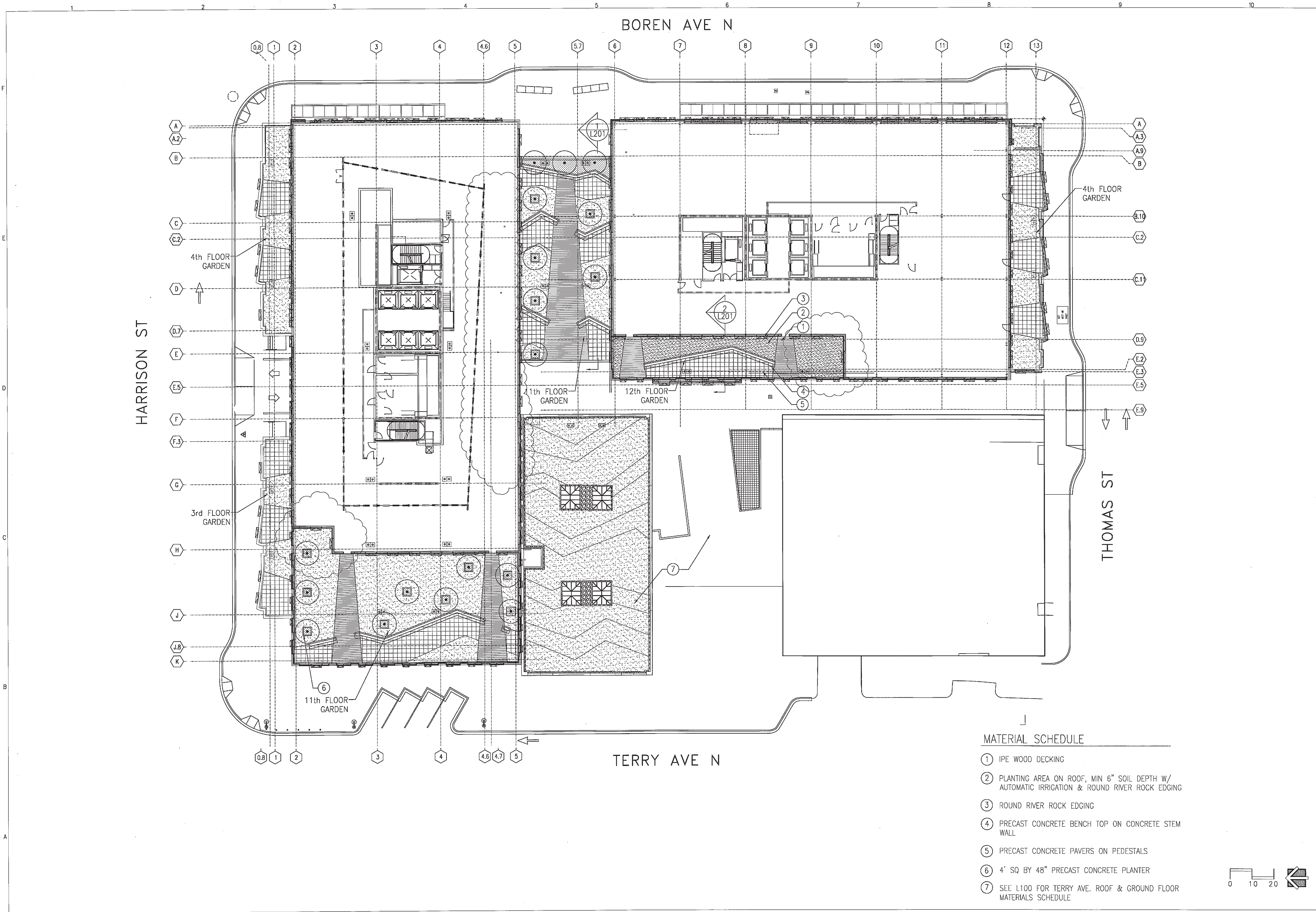
**AMAZON.COM  
 PHASE IV**  
 301 Boren Ave. N.  
 Seattle, WA 98109  
 PROJECT #207193.00

ISSUED / REVISED	DATE
MUP INTAKE SET	4/15/08
MUP RESPONSE #1	JUNE 10, 2008

**LANDSCAPE PLAN  
 GROUND LEVEL**  
**L-101**

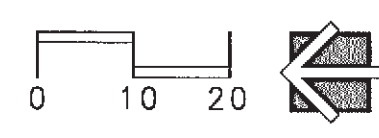






**MATERIAL SCHEDULE**

- ① IPE WOOD DECKING
- ② PLANTING AREA ON ROOF, MIN 6" SOIL DEPTH W/ AUTOMATIC IRRIGATION & ROUND RIVER ROCK EDGING
- ③ ROUND RIVER ROCK EDGING
- ④ PRECAST CONCRETE BENCH TOP ON CONCRETE STEM WALL
- ⑤ PRECAST CONCRETE PAVERS ON PEDESTALS
- ⑥ 4' SQ BY 48" PRECAST CONCRETE PLANTER
- ⑦ SEE L100 FOR TERRY AVE. ROOF & GROUND FLOOR MATERIALS SCHEDULE



**VULCAN**  
 OWNER:  
**CITY PLACE IV L.L.C.**  
 505 5th Ave S, Suite 900  
 Seattle, WA 98104  
 T 206 342 2000  
 F 206 342 9000

**WALKER-MACY**  
 CONSULTANT:  
 111 SW Oak Street  
 Portland, OR 97204  
 T 503 228 3122  
 F 503 273 8878  
 www.walkermacy.com

**CALLISON**  
 CALLISON  
 1420 Fifth Avenue #2400  
 Seattle, Washington 98101-2843  
 T 206 823 4848  
 F 206 623 4825  
 www.callison.com

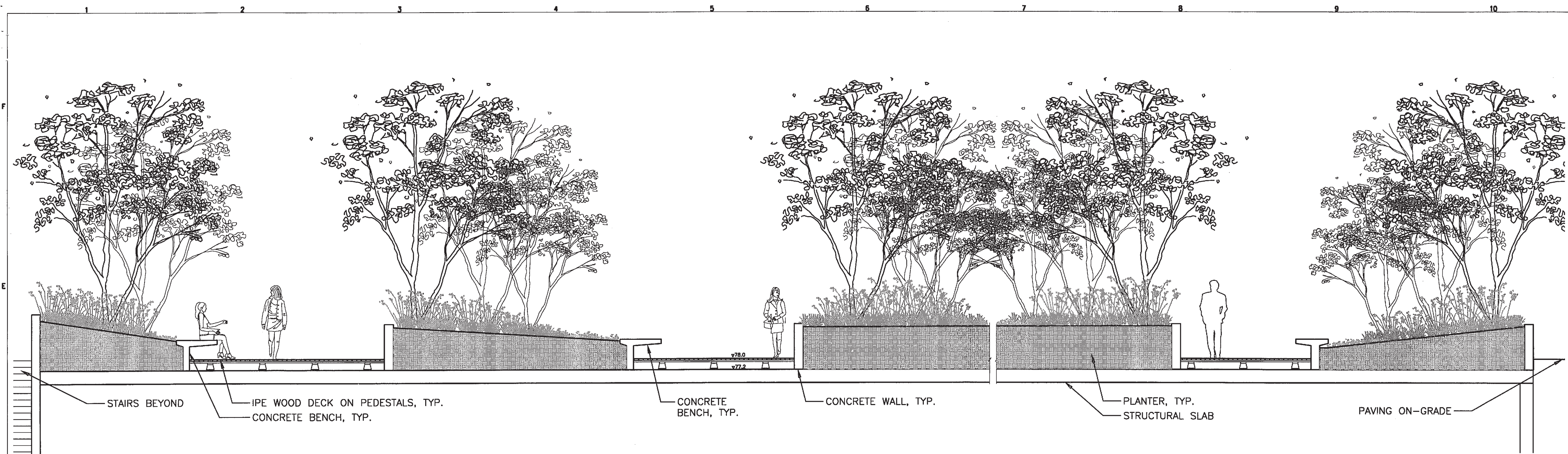
ISSUED / REVISED	DATE
MUP INTAKE SET	4/15/08
MUP RESPONSE #1	6/10/08
MUP RESPONSE #2	8/12/08

RECEIVED  
 SEP 25 2008  
 Dept. of Planning & Development  
 Planning Section

MUP RESPONSE #2  
 AUGUST 12, 2008

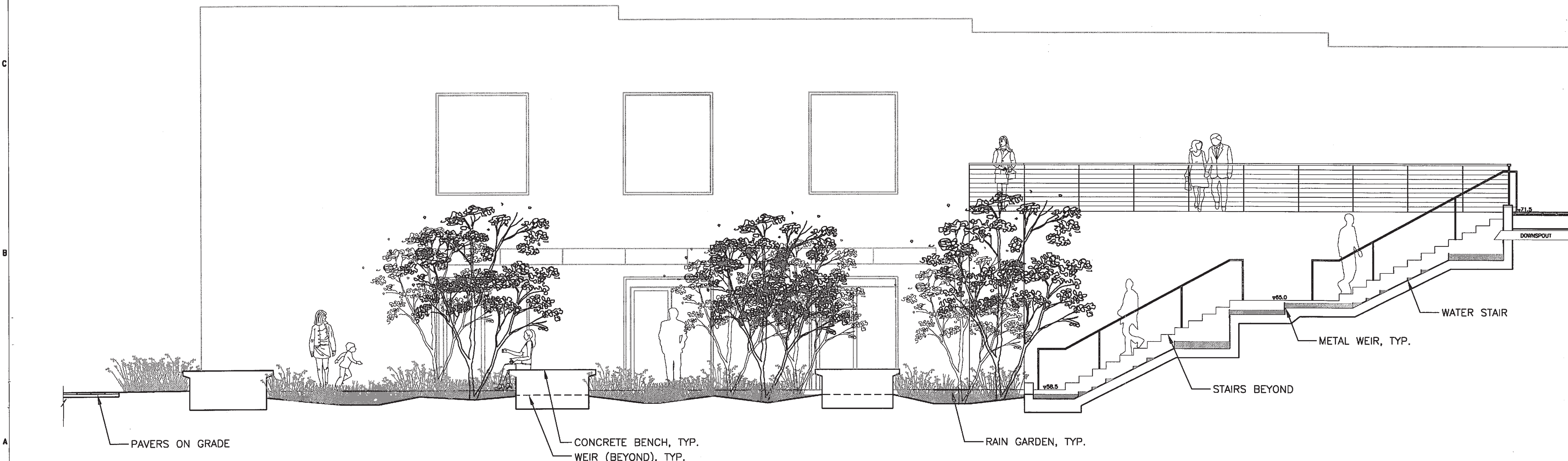
LANDSCAPE PLAN  
 ROOF LEVEL  
**L-102**





1 COURTYARD PLANTERS  
SCALE: 1/4" = 1'-0"

SECTION



2 PLAZA RAIN GARDEN  
SCALE: 1/4" = 1'-0"

SECTION

**VULCAN**  
OWNER:  
**CITY PLACE IV L.L.C.**  
505 5th Ave S, Suite 900  
Seattle, WA 98104  
T 206 342 2000  
F 206 342 3000

**WALKER-MACY**  
CONSULTANT:  
111 SW Oak Street  
Portland, OR 97204  
T 503 228 3122  
F 503 273 8876  
www.walkermacy.com

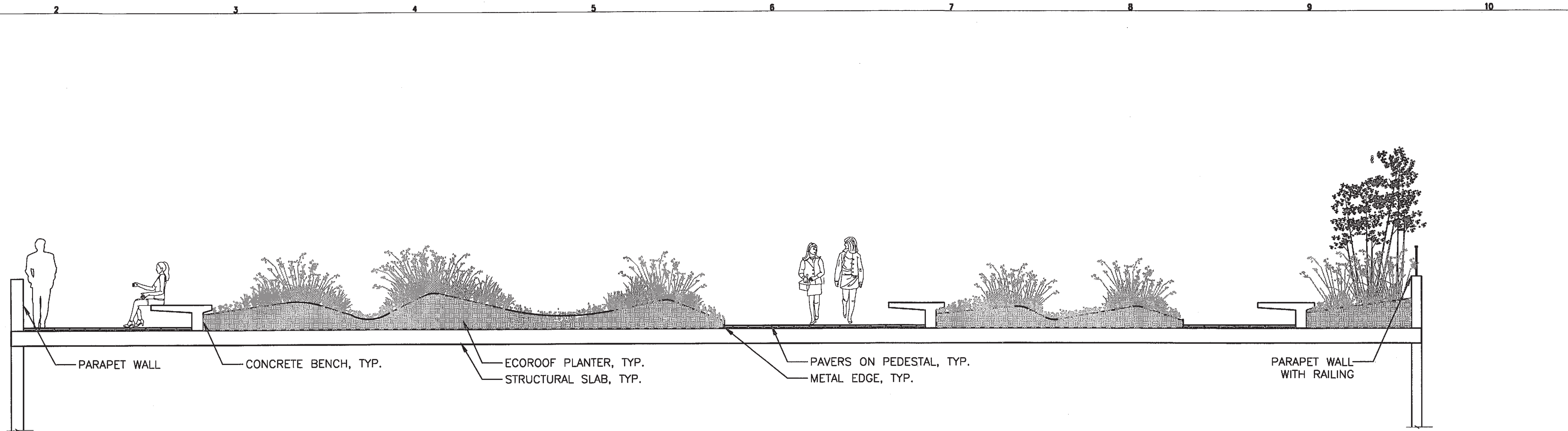
**CALLISON**  
CALLISON  
1420 Fifth Avenue # 2400  
Seattle, WA 98101-2943  
T 206 623 4646  
F 206 623 4625  
www.callison.com

**AMAZON.COM  
PHASE IV**  
301 Boren Ave. N.  
Seattle, WA 98109  
PROJECT #207193.00

ISSUED / REVISED	DATE
MUP INTAKE SET	4/15/08
MUP RESPONSE #1	JUNE 10, 2008

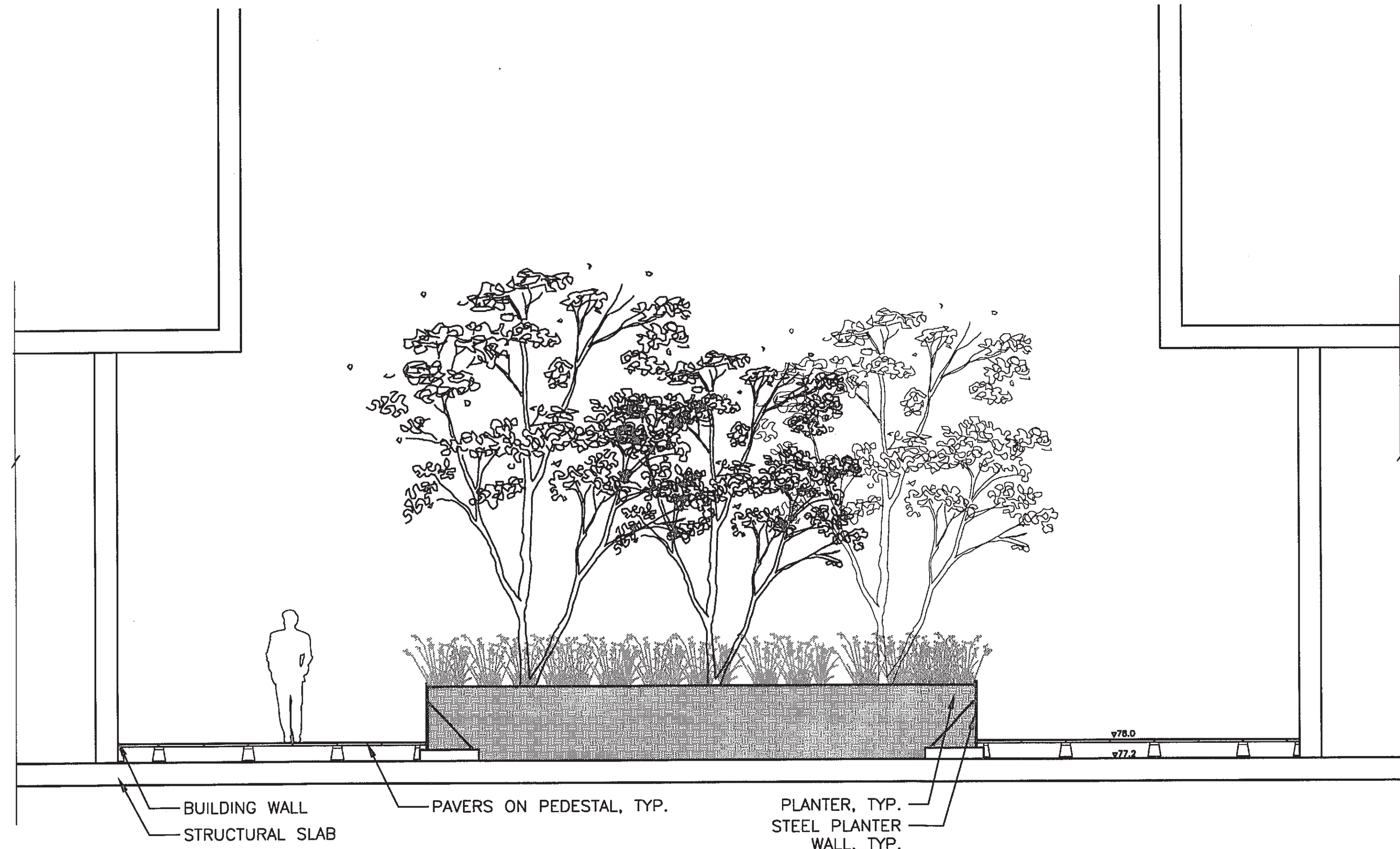
**LANDSCAPE SECTIONS  
GROUND LEVEL  
L201**





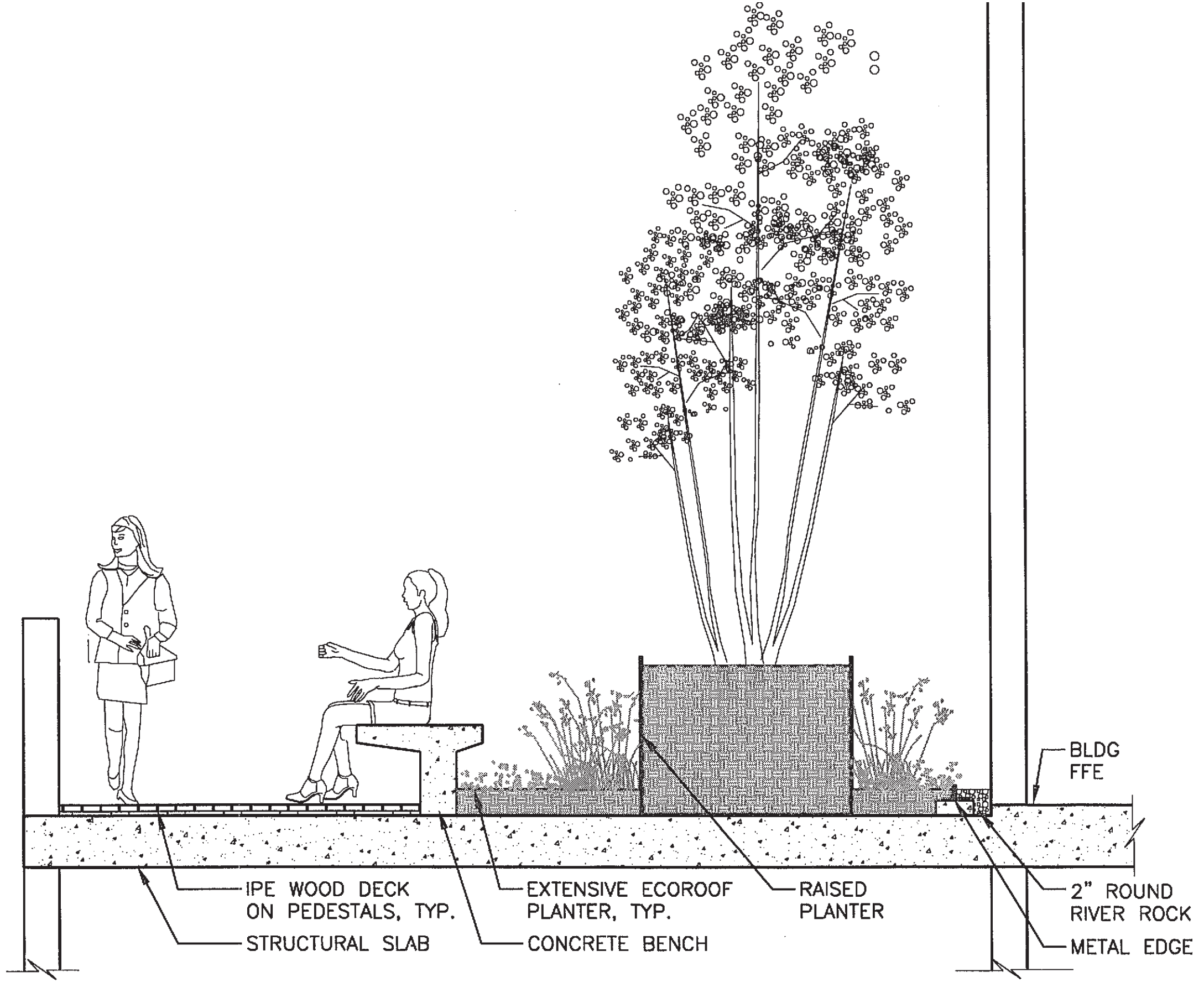
① ROOF GARDEN - 12th FLOOR  
SCALE: 1/4" = 1'-0"

SECTION



③ COURTYARD PLANTER  
SCALE: 1/4" = 1'-0"

SECTION



② ROOF GARDEN - 11th FLOOR  
SCALE: 1/2" = 1'-0"

SECTION

**VULCAN**  
OWNER:  
**CITY PLACE IV L.L.C.**  
505 5th Ave S, Suite 900  
Seattle, WA 98104  
T 206 342 2000  
F 206 342 3000

**WALKER-MACY**  
CONSULTANT:  
111 SW Oak Street  
Portland, OR 97204  
T 503 228 3122  
F 503 273 8878  
www.walkermacy.com

**CALLISON**

CALLISON  
1420 Fifth Avenue # 2400  
Seattle, WA 98101-2343  
T 206 623 4646  
F 206 623 4625  
www.callison.com

**AMAZON.COM  
PHASE IV**

301 Boren Ave. N.  
Seattle, WA 98109

PROJECT #207193.00

ISSUED / REVISED	DATE
MUP INTAKE SET	4/15/08

MUP RESPONSE #1  
JUNE 10, 2008

**LANDSCAPE SECTIONS  
ROOF LEVELS  
L202**