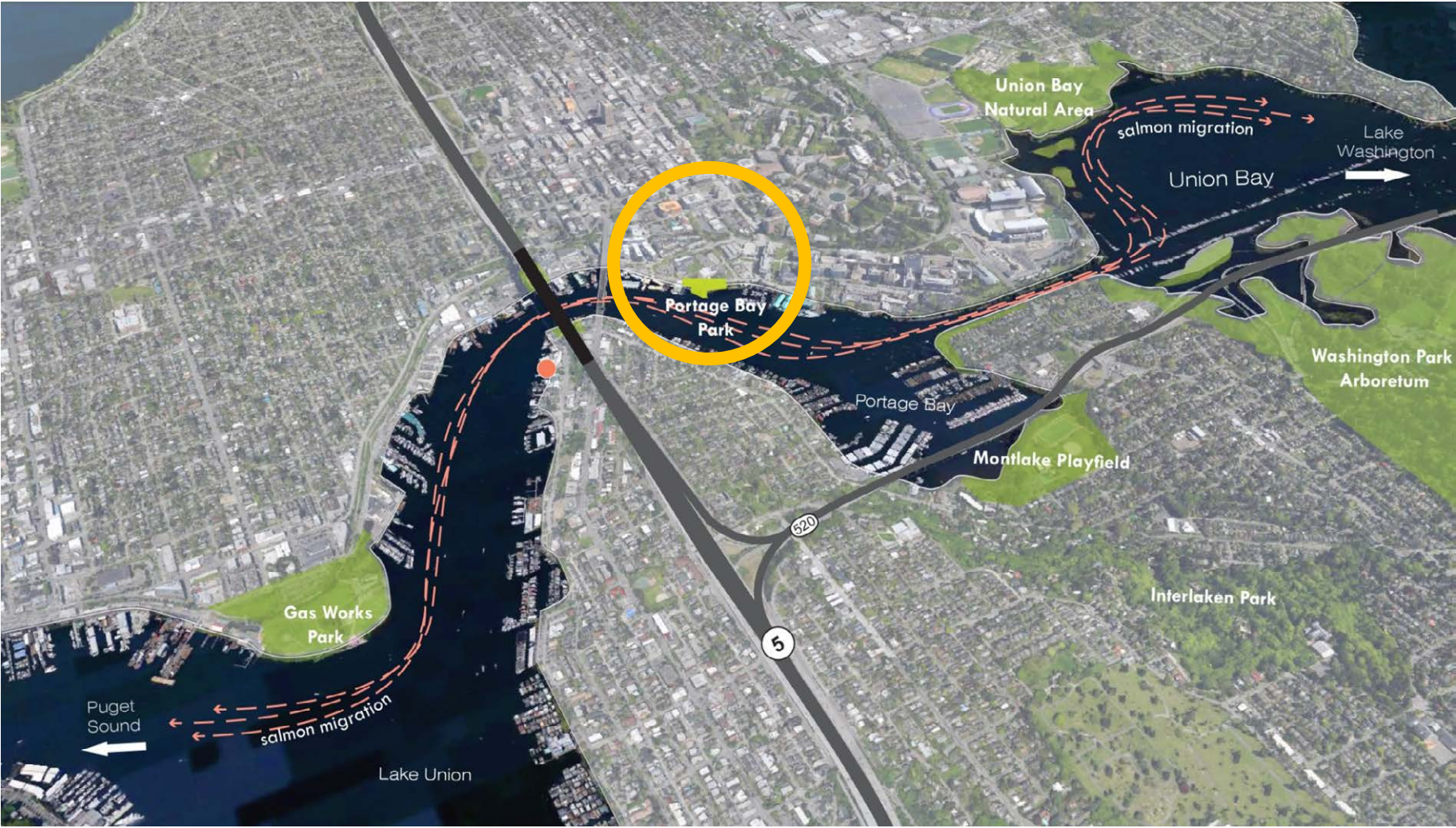




SEATTLE DEPT. OF PARKS & RECREATION PORTAGE BAY PARK

Design Commission Presentation #1
Oct 15, 2015

Project Context



Project Background

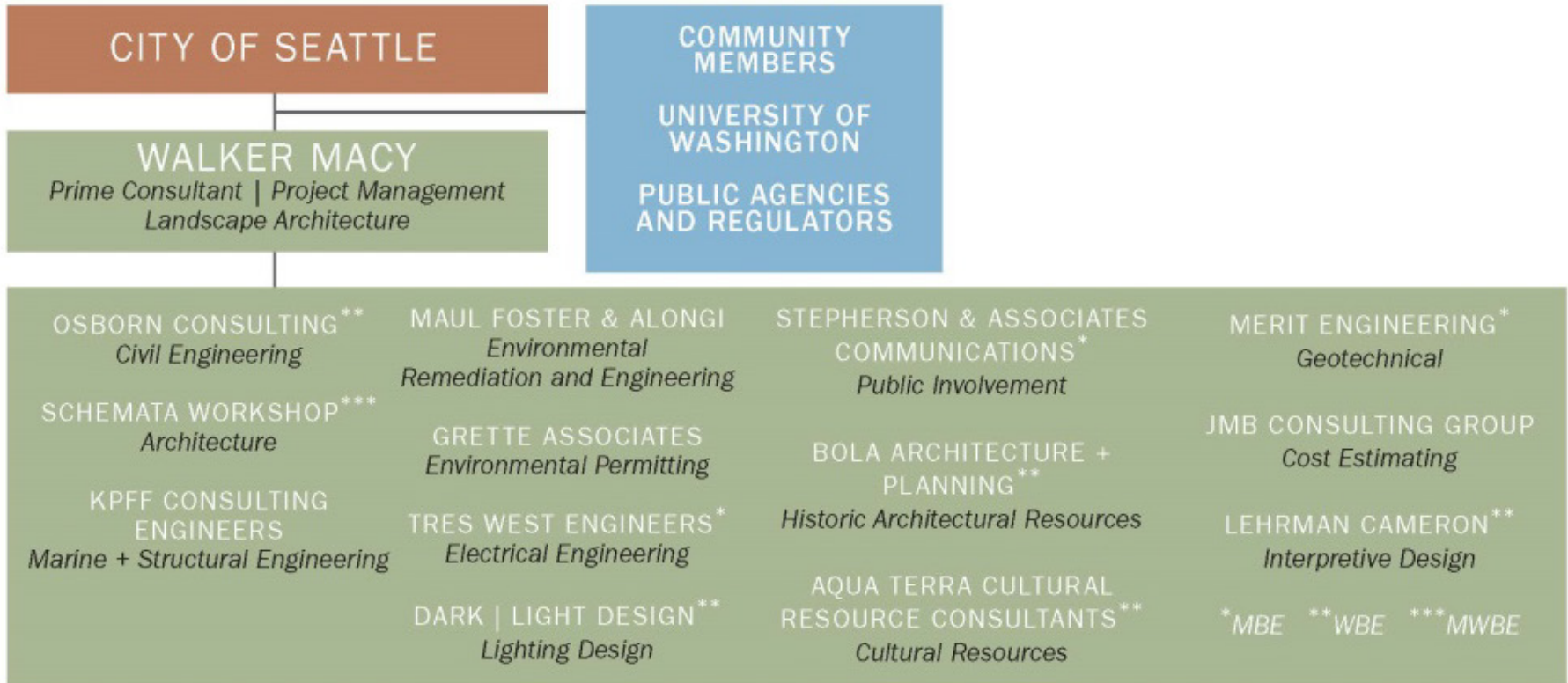
Mitigation for SR 520 Impacts to Section 6f protected properties in Washington Park Arboretum, East Montlake and McCurdy Parks

MOA between City of Seattle, WSDOT, & UW

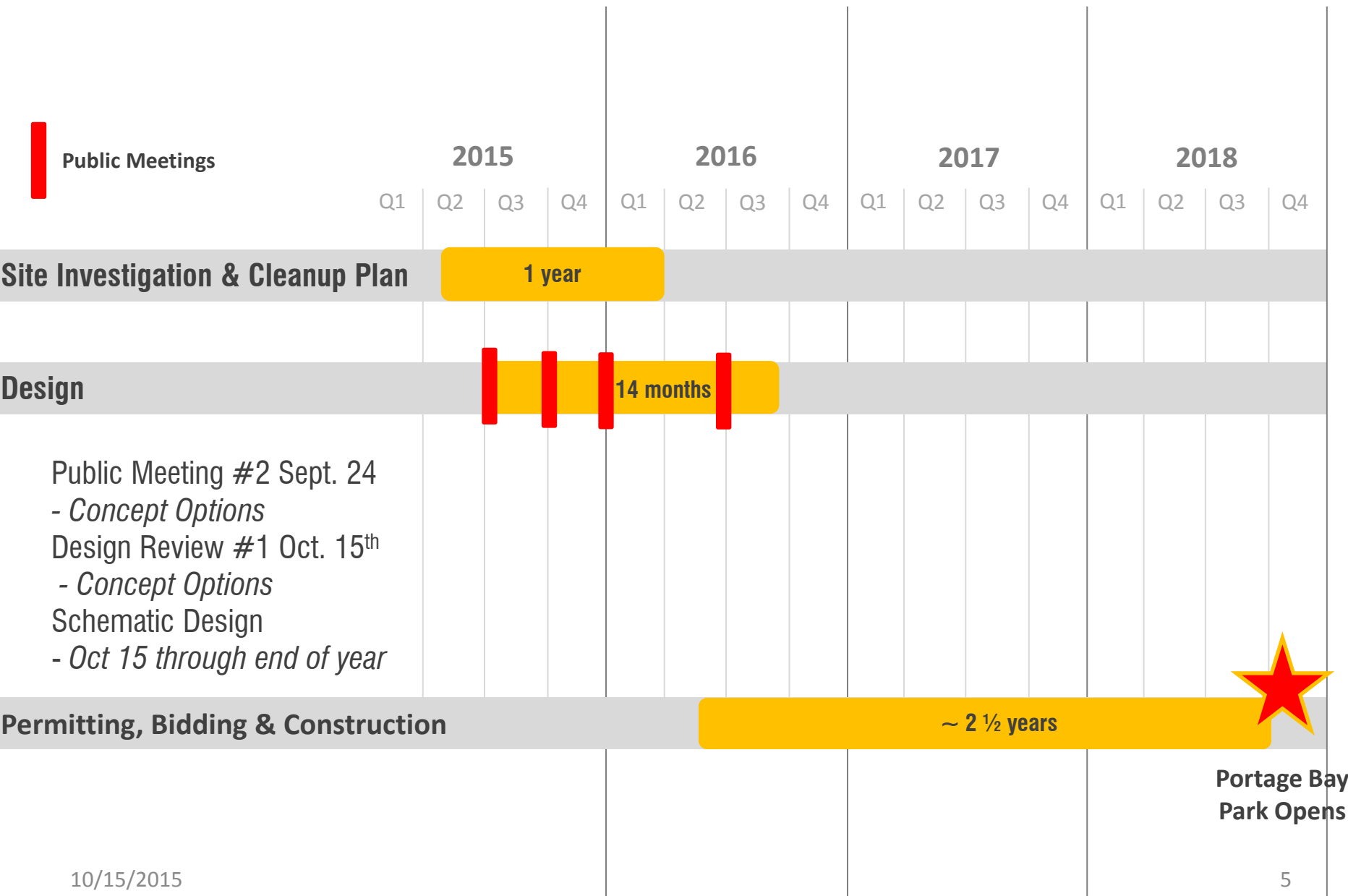
Park must provide passive open space and offer recreational opportunities/ water access

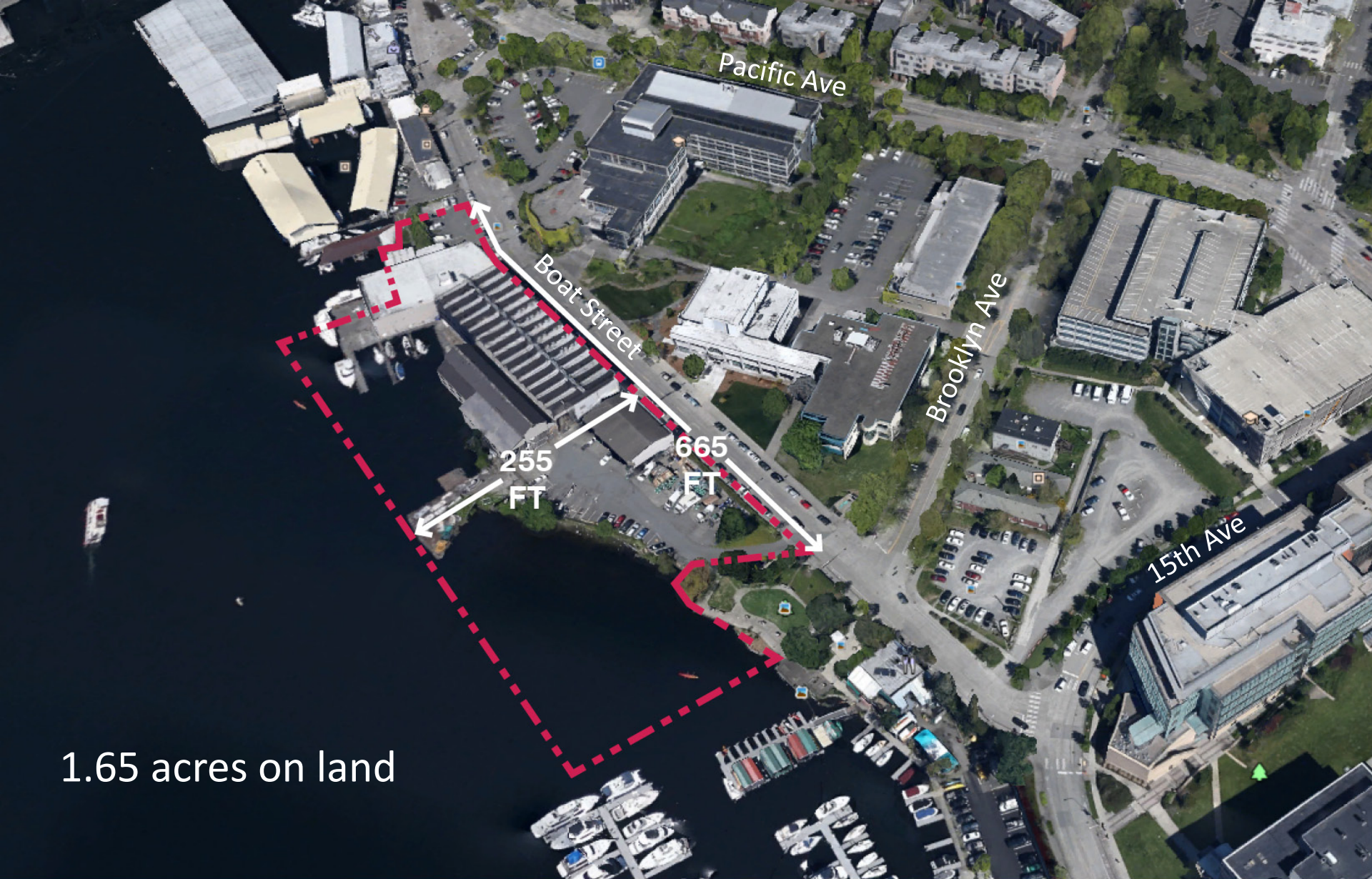
Project includes Landmarks process, building demolition and potential re-use of building elements

Project includes remediation of site contamination, and shoreline enhancement



Project Schedule

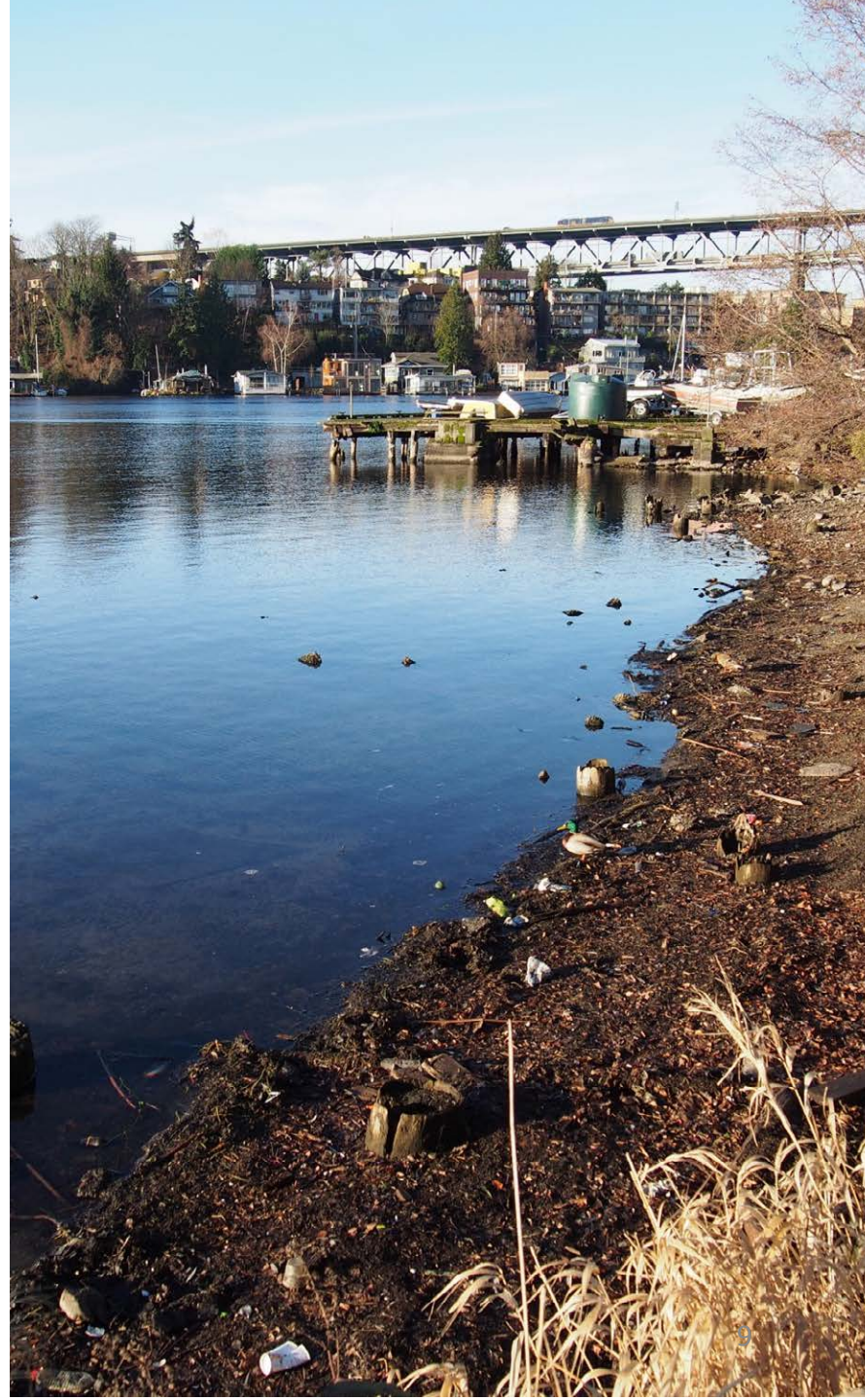




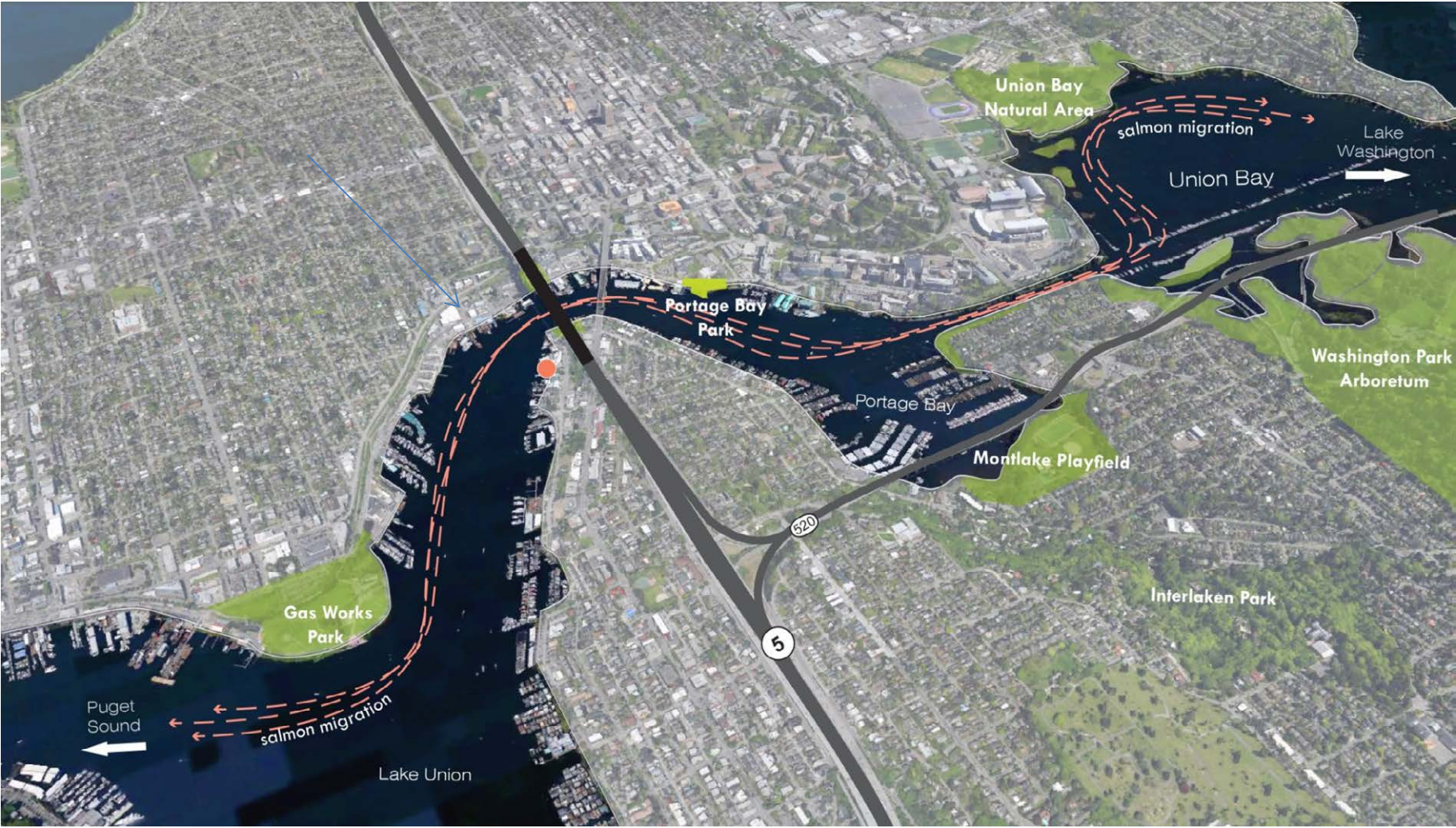
1.65 acres on land



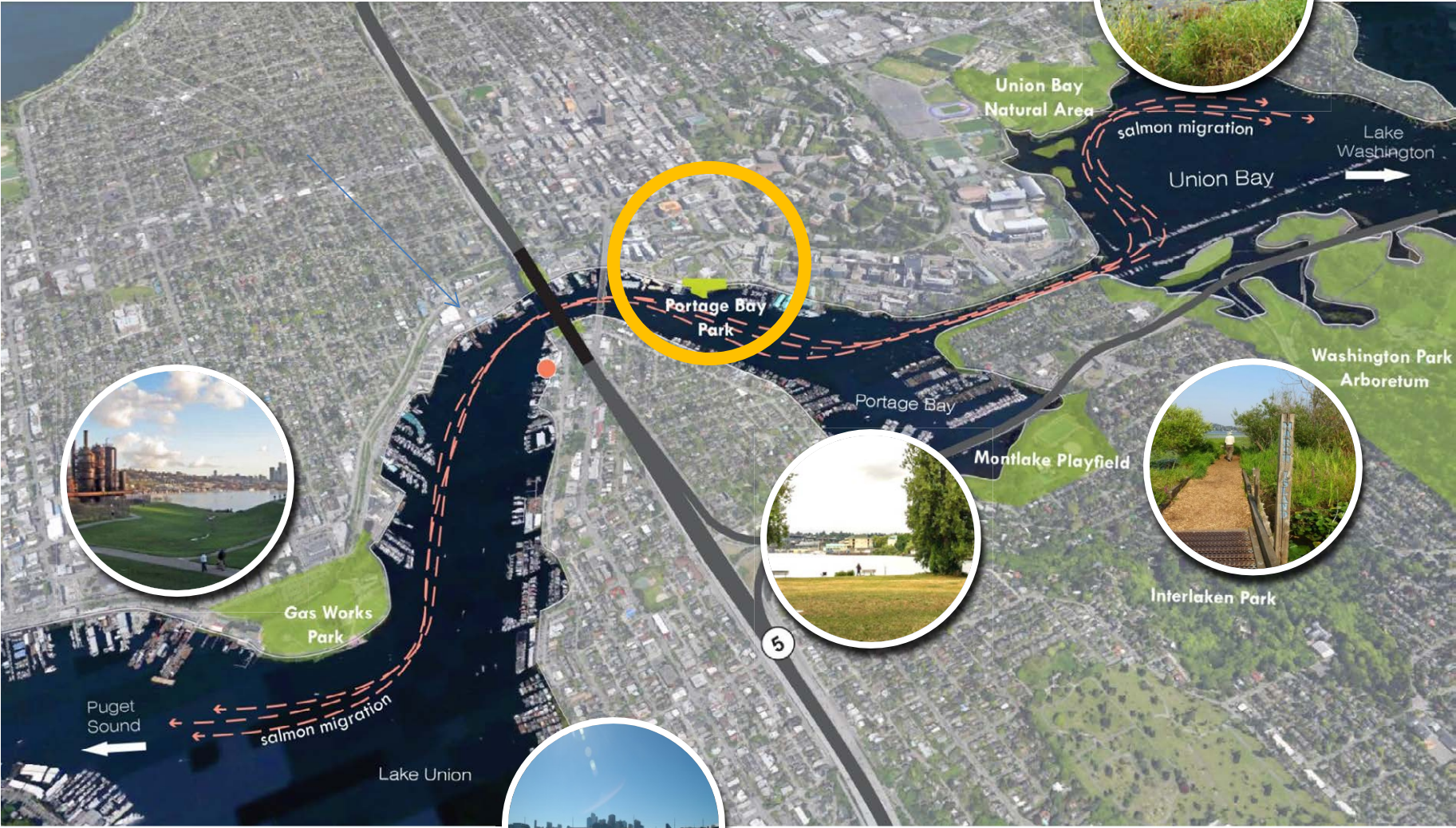




Ecological Connections



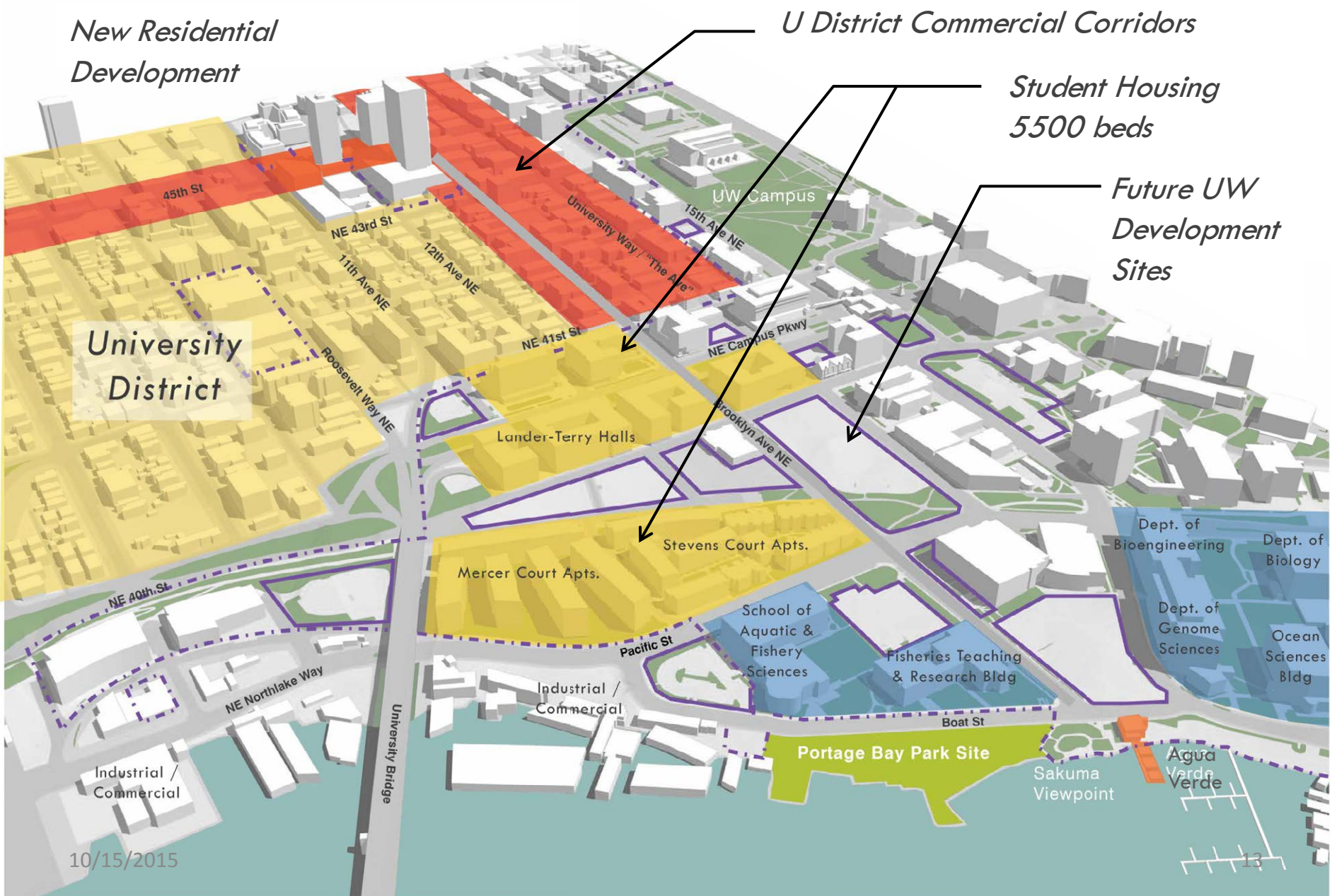
Waterfront Park Typologies



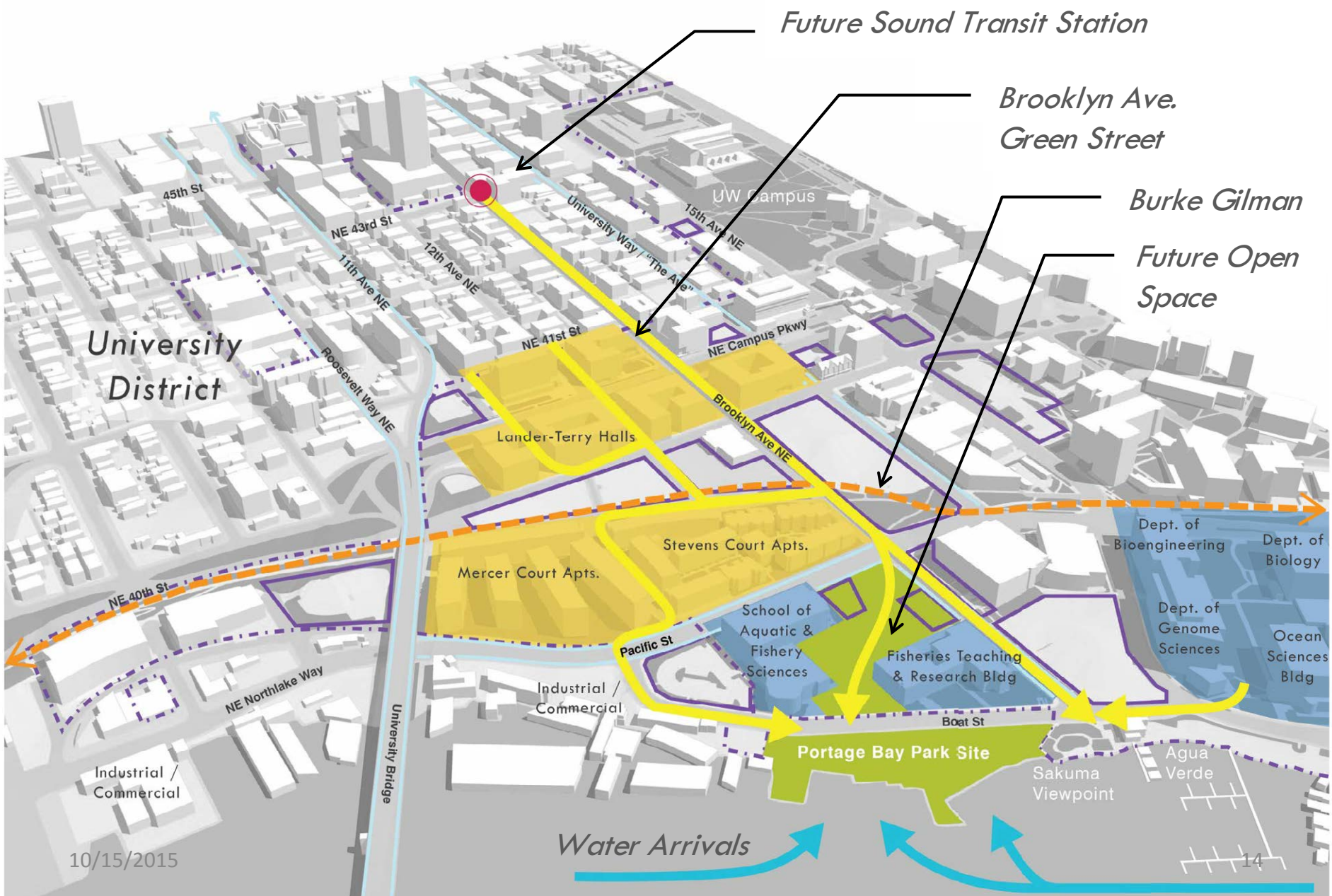
Regional Bike and Trail Connections



Activity Generators



Connections



Park Vision

A park that re-connects people to the water

A park that responds to its urban context

A park that represents the ideals of the Pacific Northwest

A park that provides natural shoreline and fish habitat

A park that celebrates maritime history and culture

Preferred Park Program

Gathering Areas

- Multi Use Open Space
- Small Performances / Events
- Shelter (possible)
- Picnic/ BBQs/ Game Areas
- Family Friendly Areas

Environment

- Natural Shoreline Planting
- Fish Habitat
- Highlight History and Culture

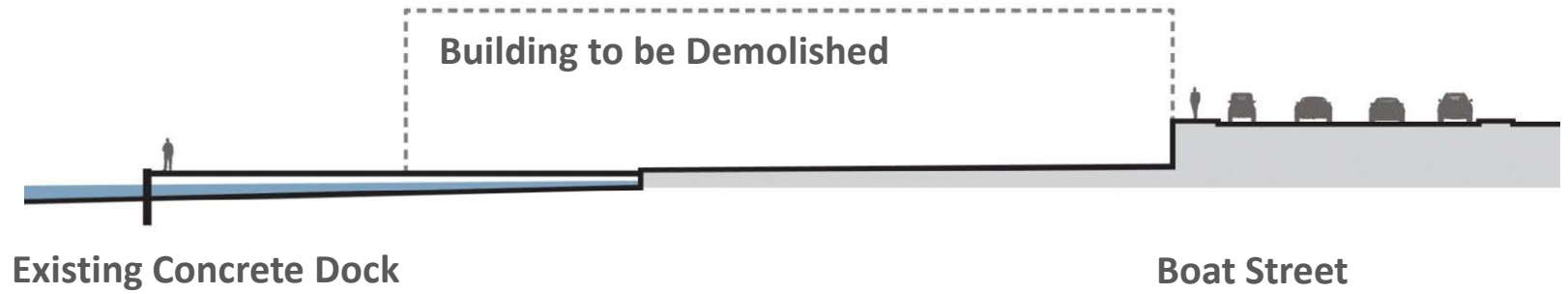
Recreation

- Beach / Access to Water
- Hand Carried Watercraft
- Piers (Fishing/ Passive Use)

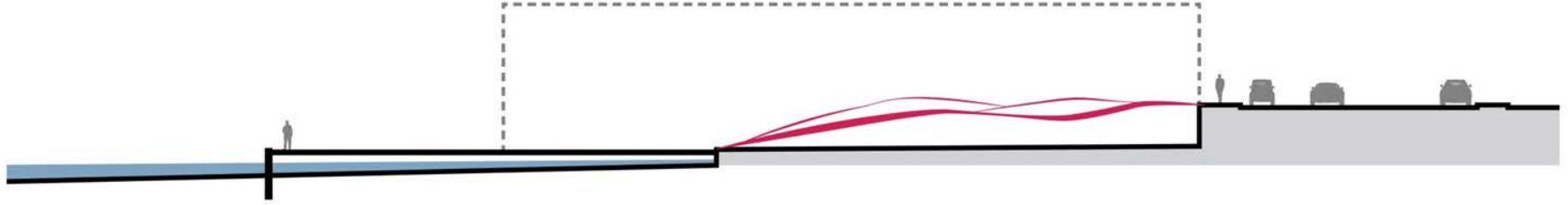
Amenities

- Bike Racks
- Kayak Racks
- Restroom (possible)
- Accessible Routes

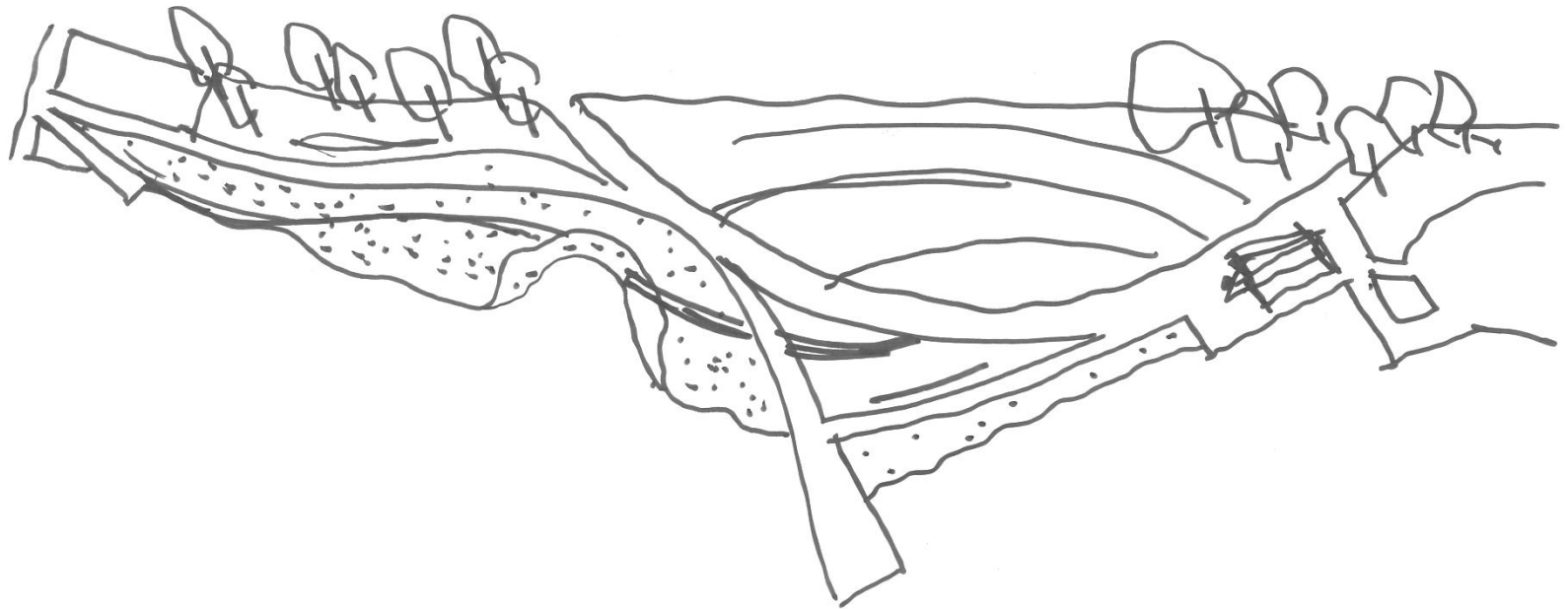
Topography



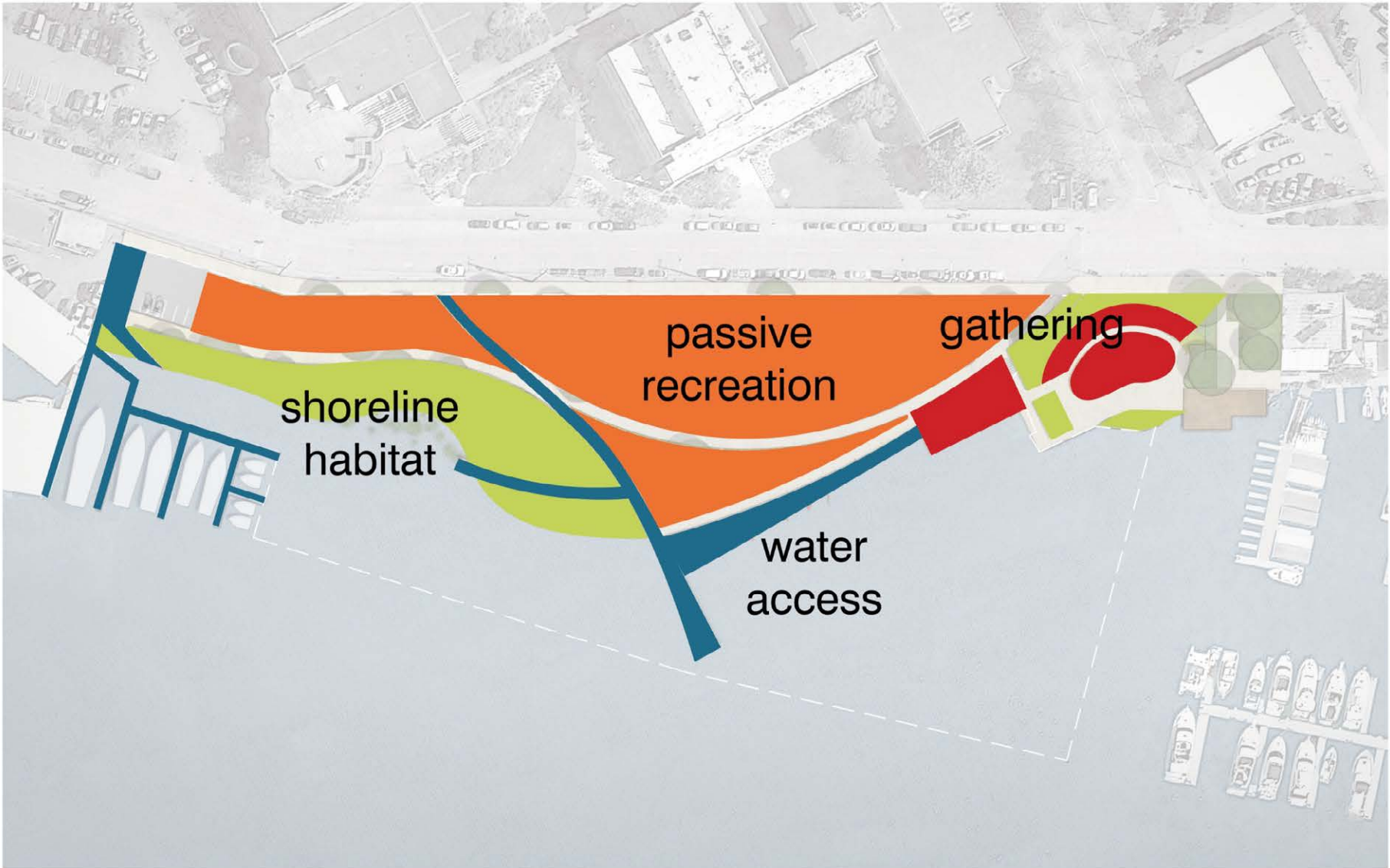
Option 1: ROLL



Option 1 – Naturalized Shoreline



Option 1 – Naturalized Shoreline



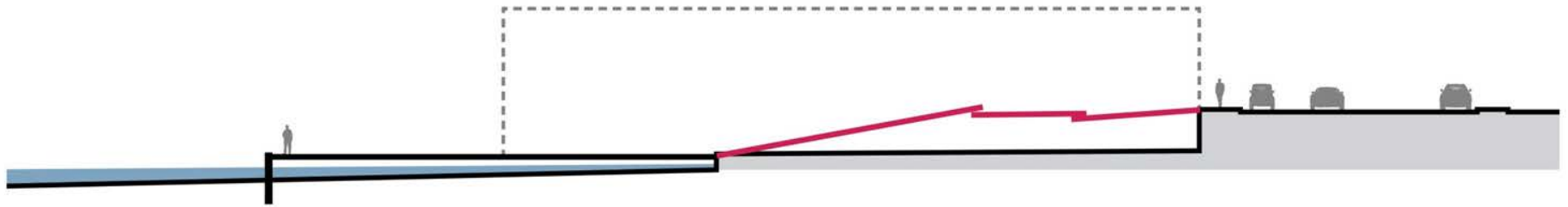
Option 1 – Naturalized Shoreline



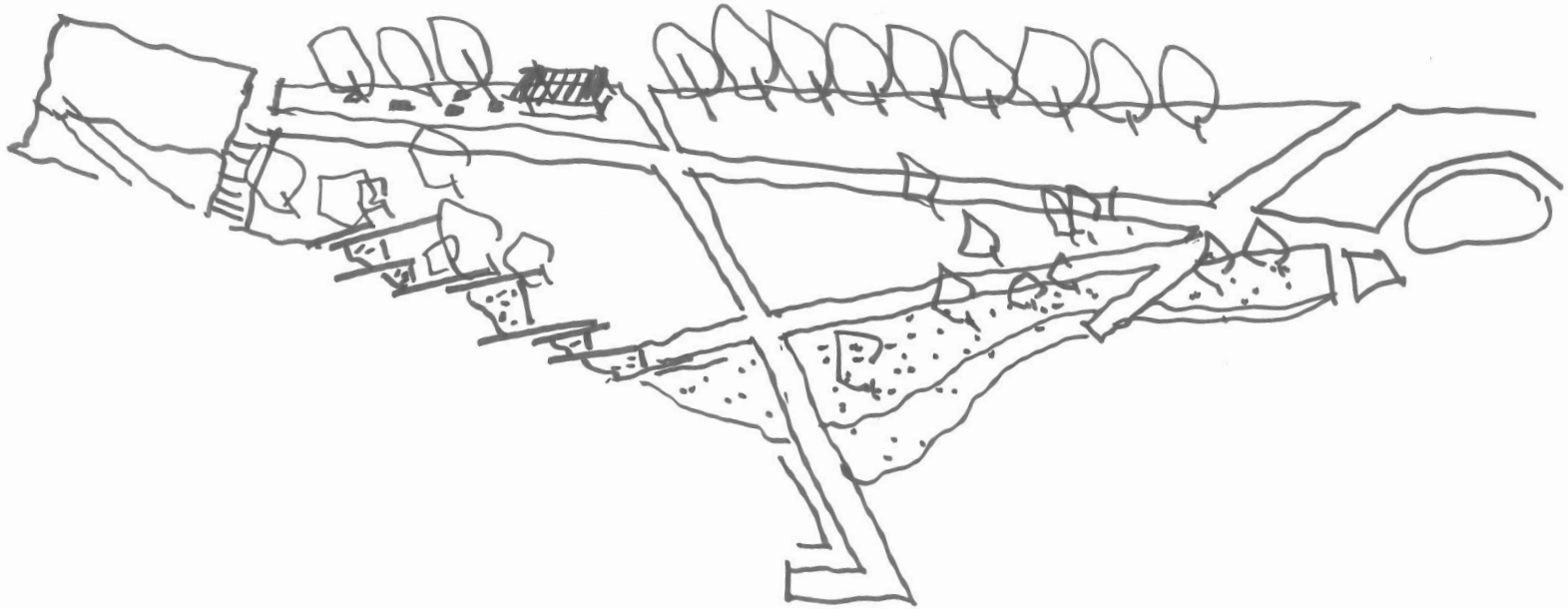
Option 1 Precedents



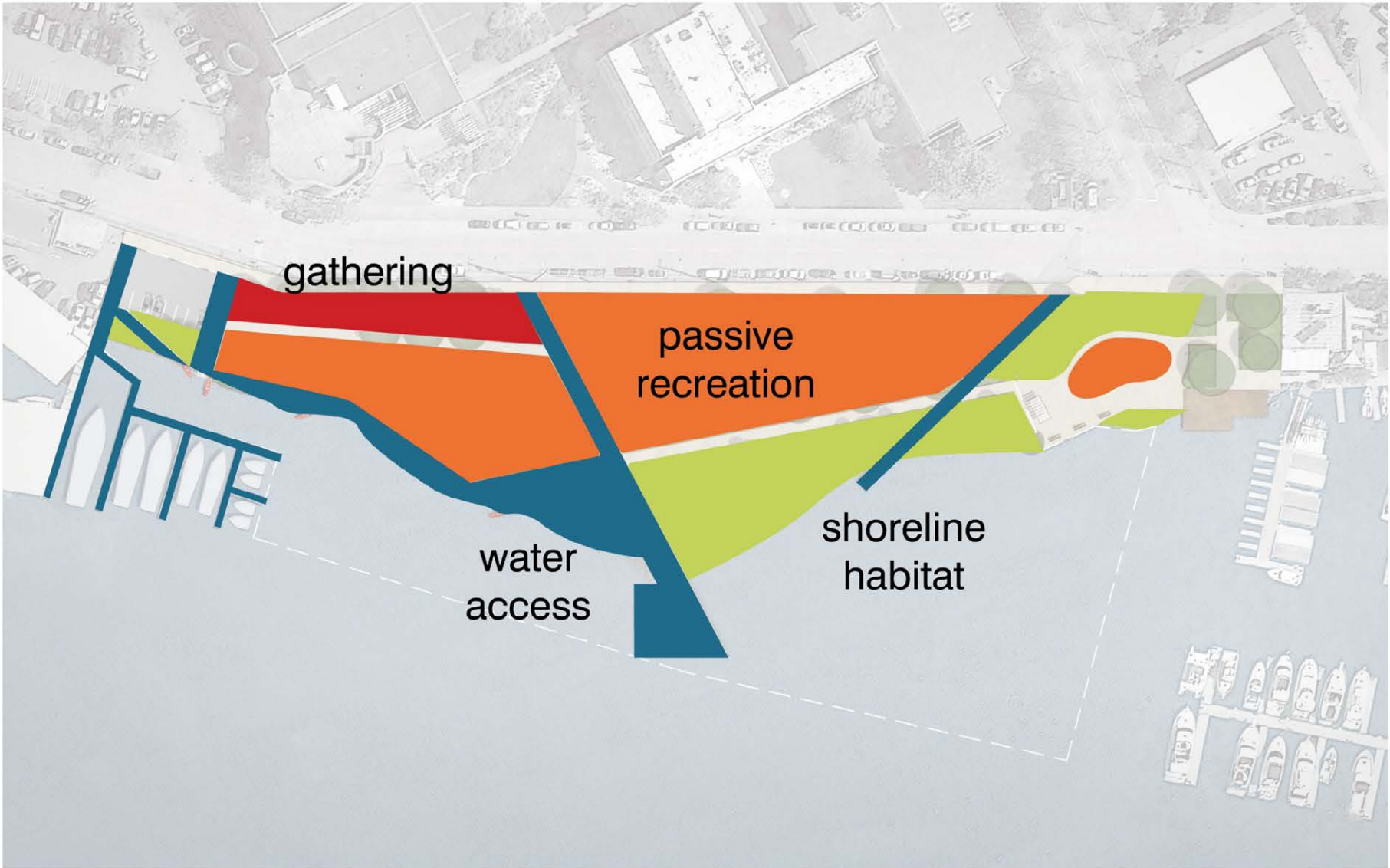
Option 2: FOLD



Option 2– Street & Water Recreation



Option 2 – Street & Water Recreation



Option 2 – Street & Water Recreation



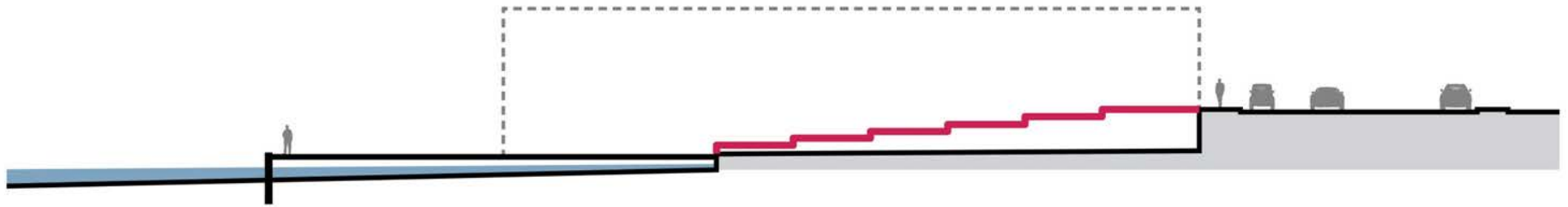
Option 2b – Street & Water Recreation



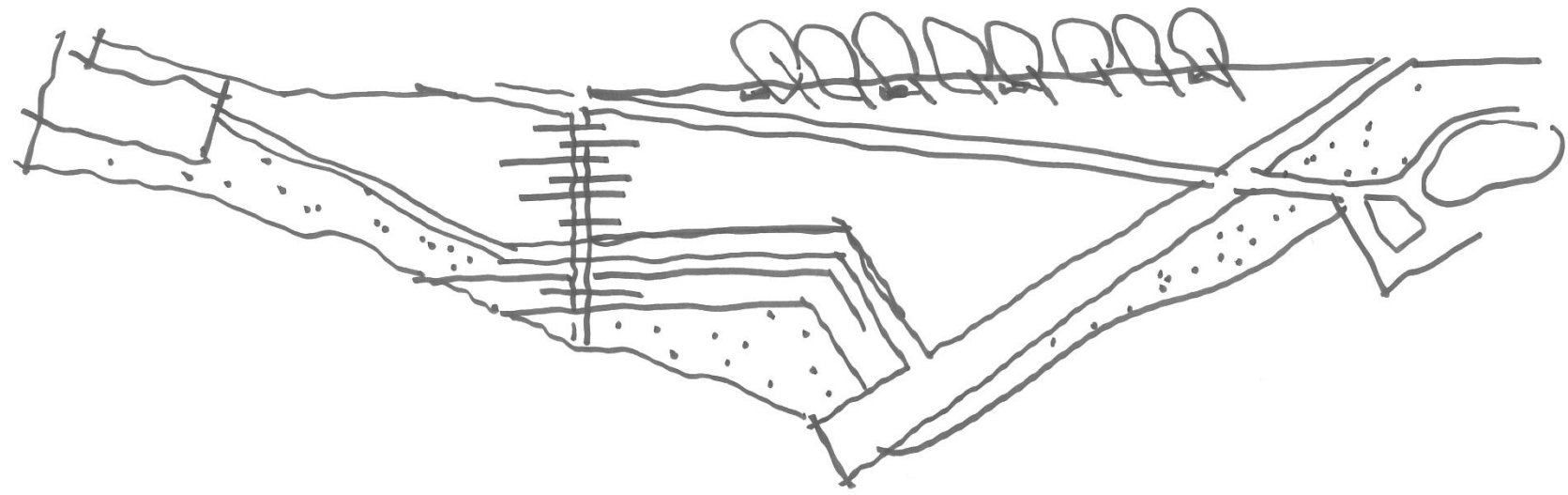
Option 2 Precedents



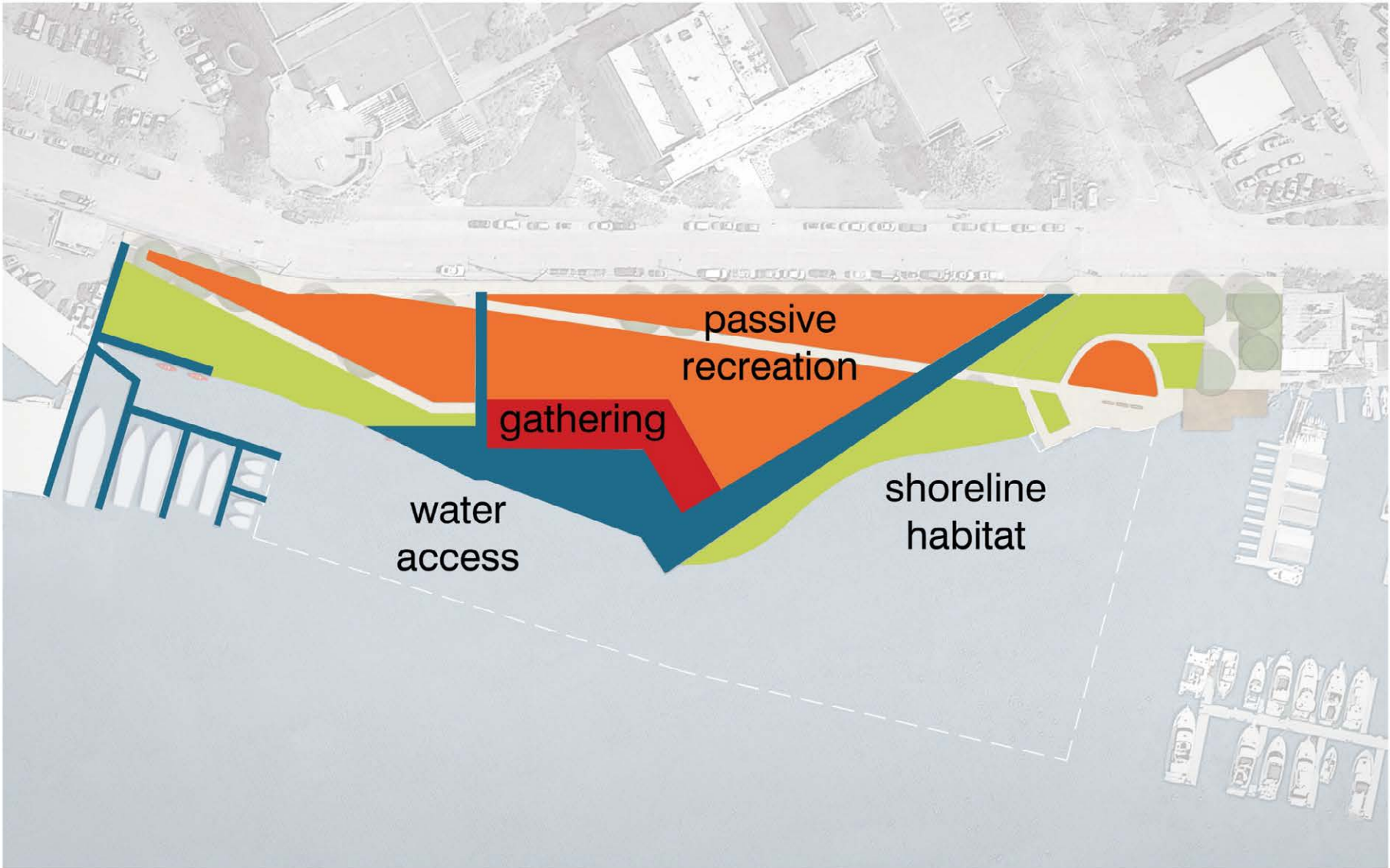
OPTION 3: STEP



Option 3 – Waterfront Amphitheater



Option 3 – Waterfront Amphitheater



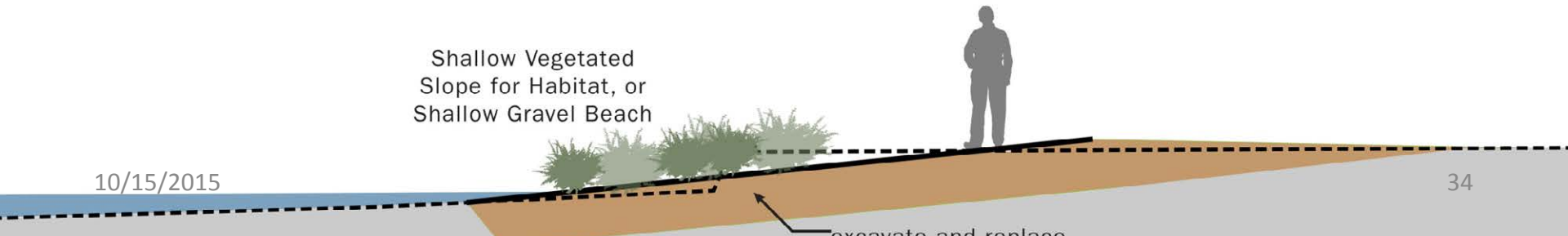
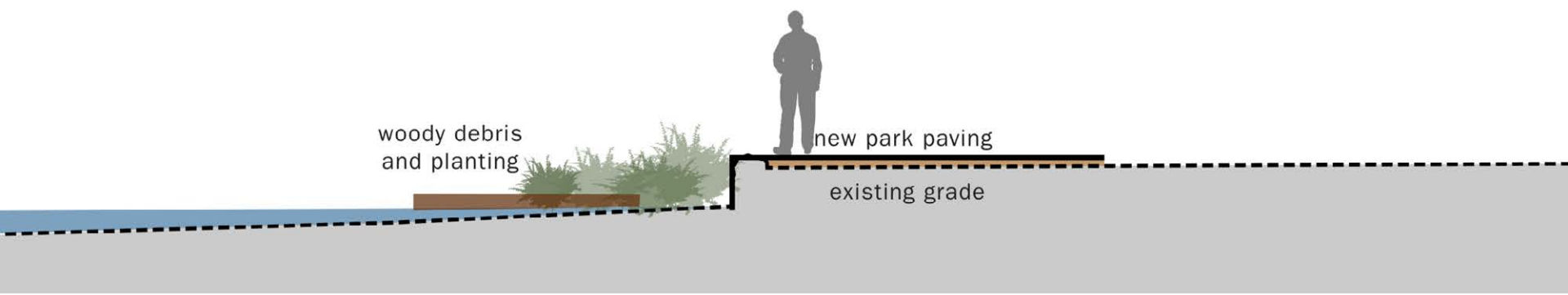
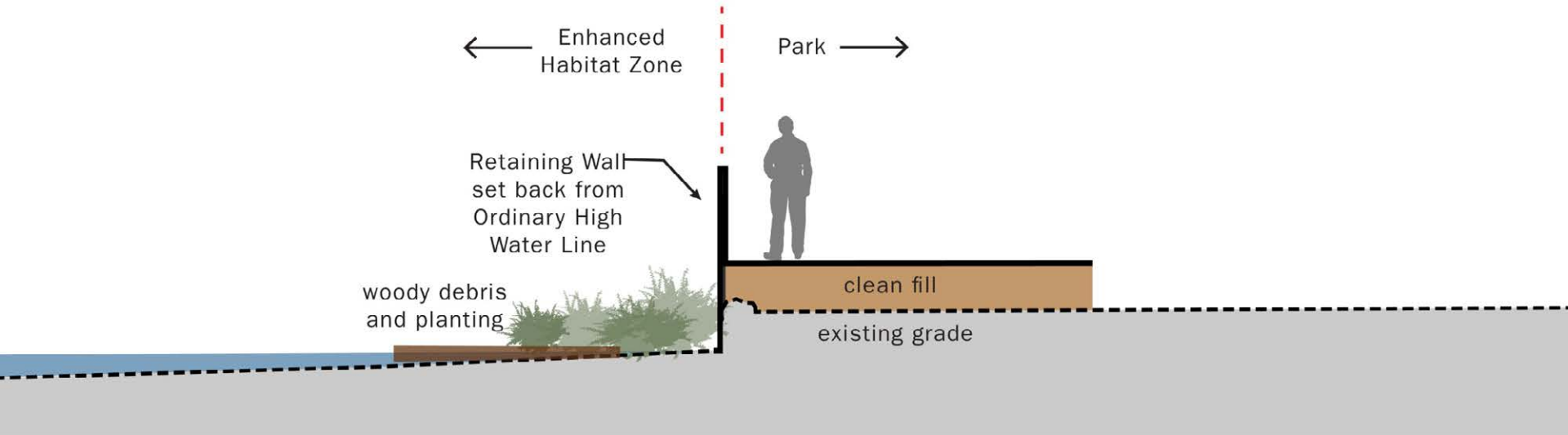
Option 3 – Waterfront Amphitheater



Option 3 – Waterfront Amphitheater



Shoreline Strategies



Comparison of Options



Option 1

- Activity near Sakuma
- Street and Water's Edge are Destinations
- Sloping Paths to Water
- Naturalized Shoreline
- Small Pier
- Picnic/ Event Shelter

- Sakuma Viewpoint is transformed into an active gathering place

Option 2

- Activity is Distributed
- Street and Water's Edge are Destinations
- Sloping Paths to Water
- Small Beach/ Pull-Ins
- Large Pier
- Multiple Small Shelters

- Sakuma Viewpoint is modified to connect better to new park

Option 3

- Activity is Centralized
- Water's Edge is Destination
- Steps to Water
- Active Beach
- No Pier
- No Shelter

- Sakuma Viewpoint is modified to connect better to new park