

WELCOME | 欢迎 | BIENVENIDOS | CHÀO MỪNG | SOO DHAWOW



Schedule

Recap

- Project Objectives
- Site Analysis
- Opportunities

Community Process

- Community Meeting One
- Survey Monkey
- Precedent Preferences
- What We Learned
- Maple Elementary Student Workshop

Guiding Principles

Concepts

- Front Porch
- Flight Path
- Meander
 - + Plans
 - + Perspectives
 - + Diagrams
- Your vote counts!
- Next Steps

2019

2020

SEPTEMBER

OCTOBER

NOVEMBER

DECEMBER

JANUARY

FEBRUARY

10.15.2019 PROVVIEW #2

10.19.2019 COMMUNITY MEETING #1
LISTEN AND LEARN

12.03.2019 PROVVIEW #3

12.12.2019 COMMUNITY MEETING #2
CONCEPT OPTIONS

12.12.2019 SURVEY MONKEY LAUNCH!

02.04.2020 PROVVIEW #4

02.12.2020 COMMUNITY MEETING #3
PREFERRED OPTION!



**WEST SEATTLE
BRIDGE**

**JEFFERSON
PARK**

**MAPLE WOOD
PLAYFIELD**

5 MINUTE



10 MINUTE



5 MINUTE



5 MINUTE



10 MINUTE



25 MINUTE



10 MINUTE



20 MINUTE



45 MINUTE



MLK WAYS

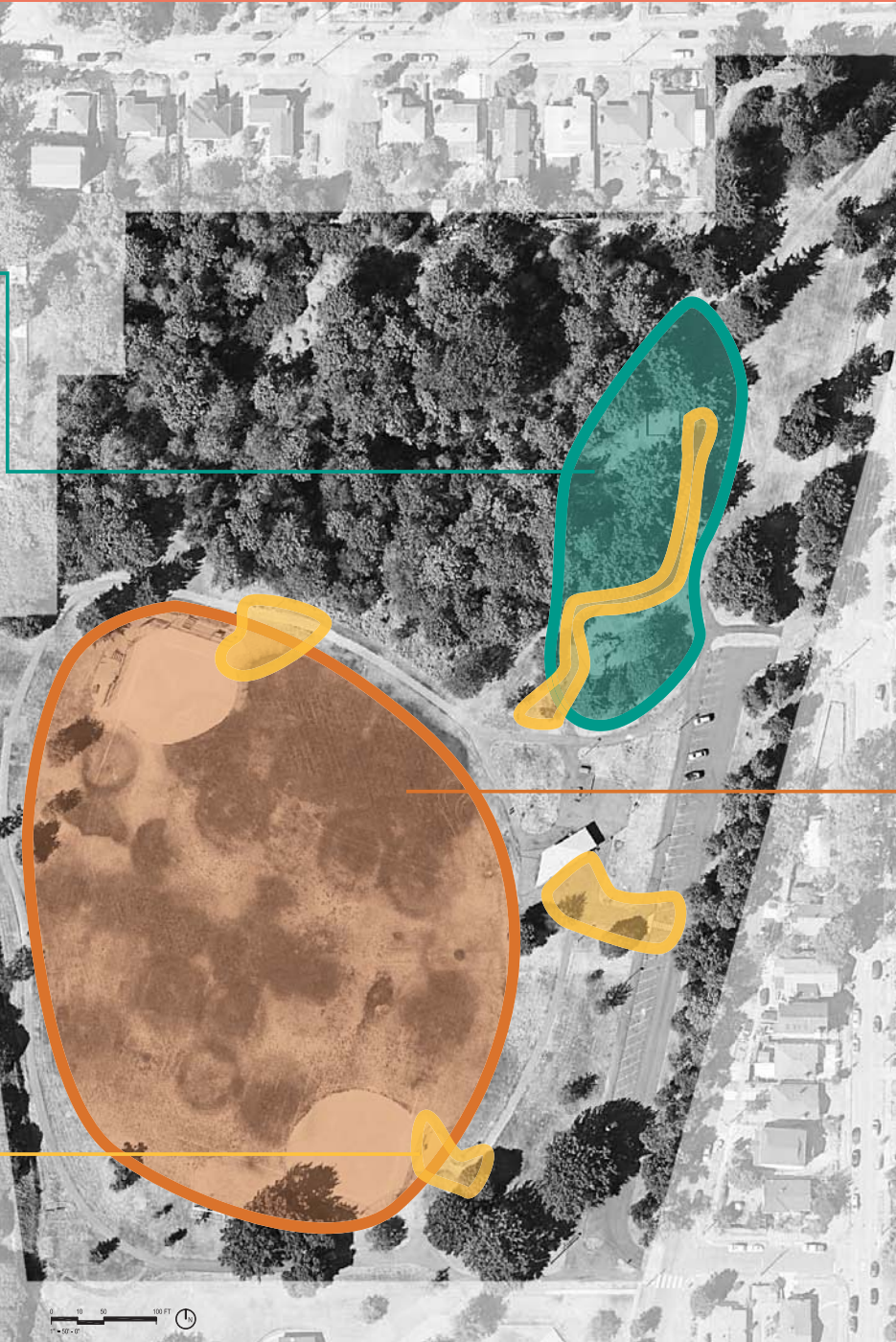
BEACON AVES

1 MILE



**PLAY AREA | 操场 | ÁREA DE JUEGO
KHU VỰC CHƠI | AAGGA CIYAARTA**

- NEW EQUIPMENT
- PLAY SURFACING
- SEATING
- ACCESSIBILITY



**FIELD | 运动场 | CAMPO
CÁNH ĐỒNG | DUURKA**

- GRADING + DRAINAGE
- BACKSTOPS, DUGOUTS, BLEACHERS
- FENCING
- VARIETY OF SPORTS



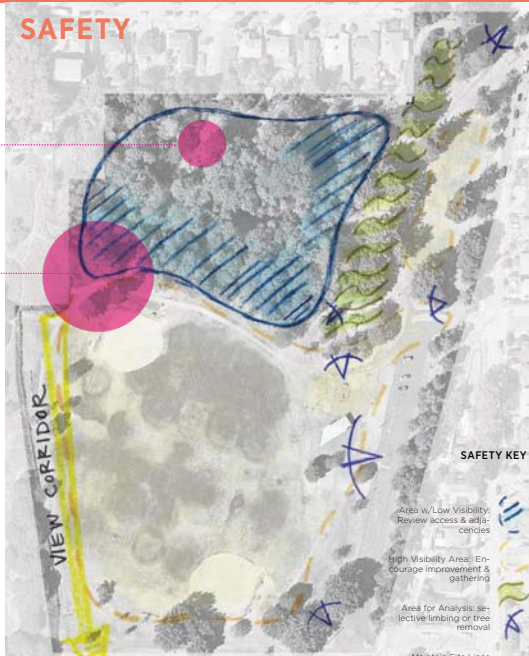
**ADA ACCESS | 无障碍出入 | ACCESO UNIVERSAL
TRUY CẬP TRUY CẬP | MARIN U HELITAAN**

- UNIVERSAL ACCESS
- FIELD
- COMFORT STATION
- PLAY AREA

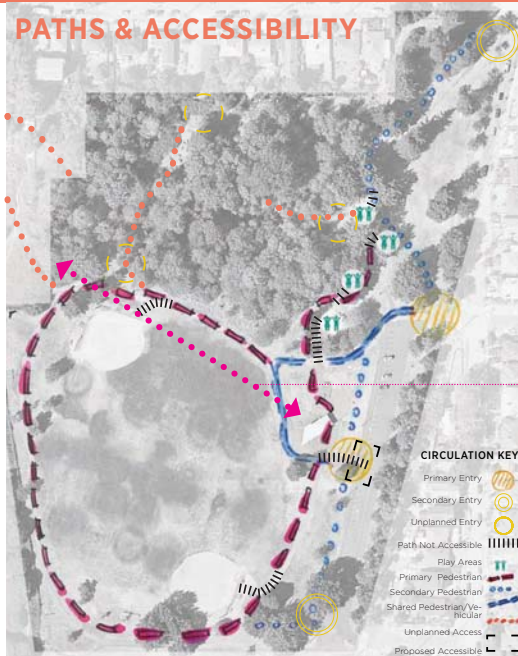


GARBAGE CAN COLLECT HERE

THIS AREA CAN FEEL UNSAFE DUE TO LIGHTING AND TREES WITHOUT DESIGNATED ACTIVITY



SAFETY (CPTED) | 安全
SEGURIDAD | SỰ AN TOÀN | AMMAANKA

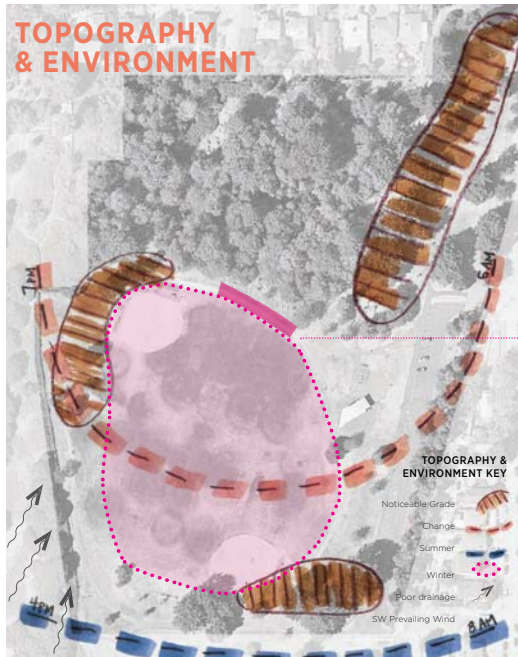


PATHS + ACCESSIBILITY | 动线&出入口 | CIRCULACIÓN
VÒNG TUẦN HOÀN | WAREEGGA

PEOPLE COMING UP ENCAMPMENTS TO USE COMFORT STATION (CUTTING FENCE)



VEGETATION | 植被 | VEGETACIÓN
THÂM THỰC VẬT | DHIRTA



TOPOGRAPHY & ENVIRONMENT | 地形及环境
TOPOGRAFIA Y ASPECTOS AMBIENTALES |
ĐỊA HÌNH VÀ MÔI TRƯỜNG | TOPOGRAPHY IYO DEEGAANKA

PATH FLOODS



-  CIRCULATION (PEDESTRIAN)
-  SHARED CIRCULATION (VEHICULAR + PEDESTRIAN)
-  FIELD
-  GATEWAY
-  GATHERING
-  PLANTING
-  PLAY AREA



PRECEDENT PREFERENCES | 案例 | REFERENCIAS | TIỀN LỆ | MASHRUUCA KIISKA

FIELD



ACTIVITY



GATHERING



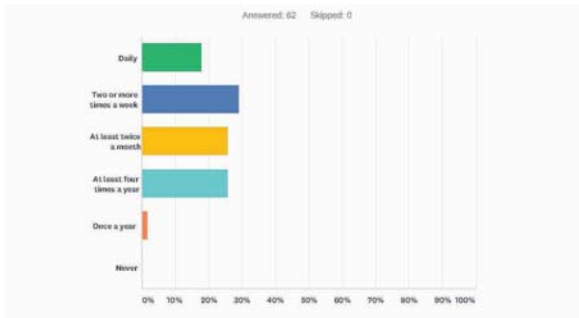
PLAY



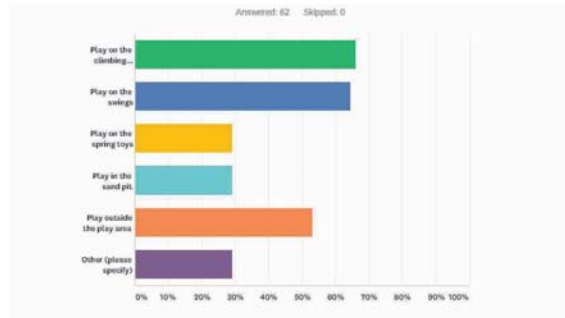
PLANTING



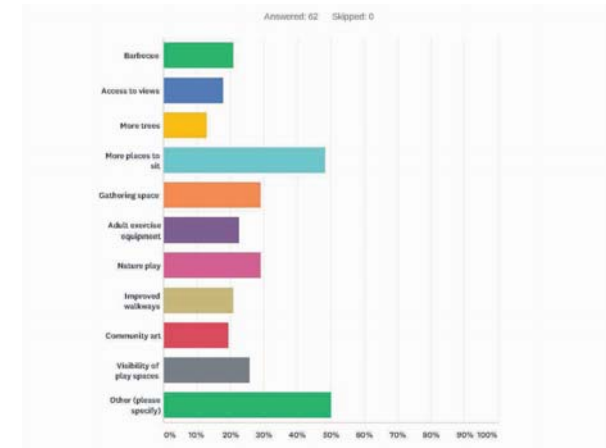
Q1 How often do you visit the park?



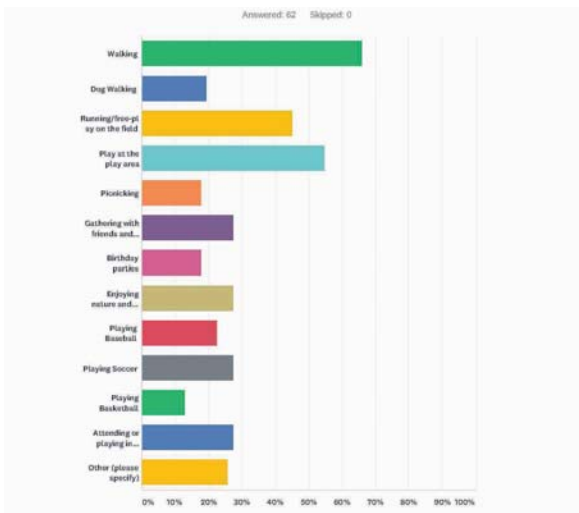
Q3 What type(s) of activities do you and your children do at the play area?



Q5 What is the park missing?



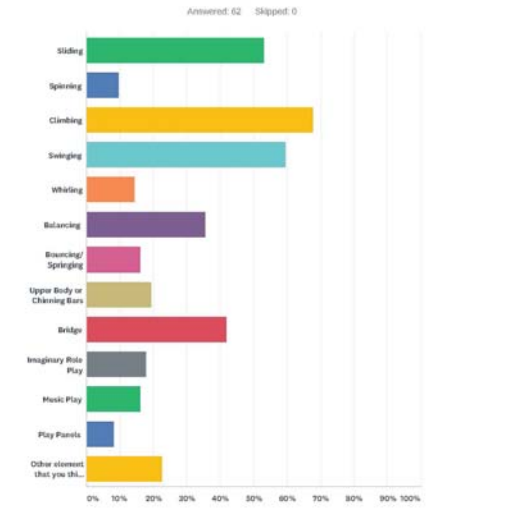
Q2 Why do you go to Maple Wood park?



Q4 What do you like about Maple Wood park?

- location/proximity to school
- sports fields
- views
- walking trails and trek
- planes flying overhead
- large open space
- secluded and quiet with limited traffic
- access to nature and berry picking
- shaded play area in summer
- amenities/BBQ

Q5 What play elements do you like most for the play area?





Design Presentation
 by Melody
 We designed types of Inclusion by adding rock wall, bridge, lamp poles, spinning, spring toys, play panels, ziplines and balance. Also more swings and a skate park. on ~~the~~ ~~side~~!

DESIGN Presentation
 by Arianna + Peyton
 We designed types of play by taking away the SandBox and adding a spray park. We are also adding a gazebo and a zipline leading to the treehouse and back down. BIGGER SWINGS so more people can use

Monkwan, Melody, Anna, Peyton



What we learned:

Playground preferences:

Inclusive and accessible play areas and equipment

Places for parents and kids to stay/sit

Zipline, Bridge, Gaga Ball, Climbing wall, Sensory play, Slides and Swings.



- Create a **variety** of types of spaces and experiences within the park
- Provide **multi-generational** activities and opportunities - including seniors, tots and tweens
- Design **high quality** play fields (including: baseball, softball, soccer, ultimate frisbee)
- Provide integrated, **accessible** design solutions
- Improve, **expand** and modify circulation throughout the park
- Diversify types of play through **challenge**, age range and type (including: nature, discovery, adventure play)
- Provide **flexibility** for multiple uses



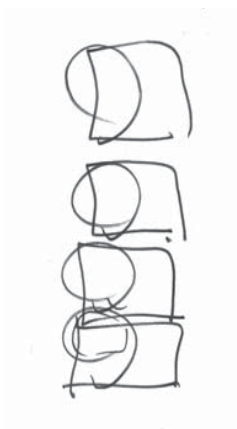
FRONT PORCH | 社区客厅 | PÓRTICO
TRƯỚC HIỀN NHÀ | BALBALADA HORE



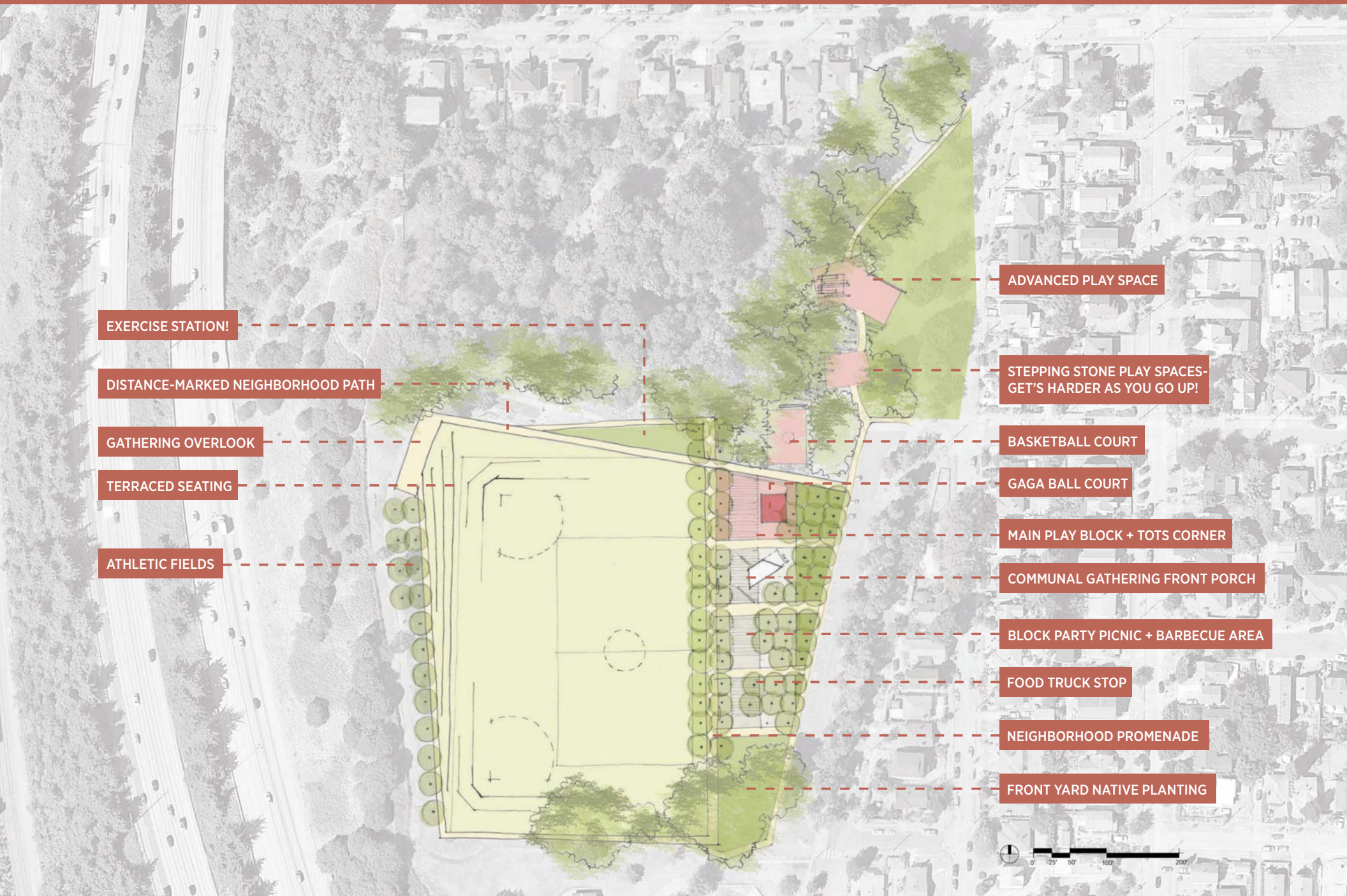
FLIGHT PATH | 航行轨迹 | TRAZO AÉREO
ĐƯỜNG BAY | WADOOYINKA DUULIMAADKA



MEANDER | 蜿蜒 | EL MEANDRO
UỒN KHÚC | QALOOCA



FRONT PORCH | 社区客厅 | PÓRTICO | TRƯỚC HIÊN NHÀ | BALBALADA HORE



EXERCISE STATION!

DISTANCE-MARKED NEIGHBORHOOD PATH

GATHERING OVERLOOK

TERRACED SEATING

ATHLETIC FIELDS

ADVANCED PLAY SPACE

STEPPING STONE PLAY SPACES-
GET'S HARDER AS YOU GO UP!

BASKETBALL COURT

GAGA BALL COURT

MAIN PLAY BLOCK + TOTS CORNER

COMMUNAL GATHERING FRONT PORCH

BLOCK PARTY PICNIC + BARBECUE AREA

FOOD TRUCK STOP

NEIGHBORHOOD PROMENADE

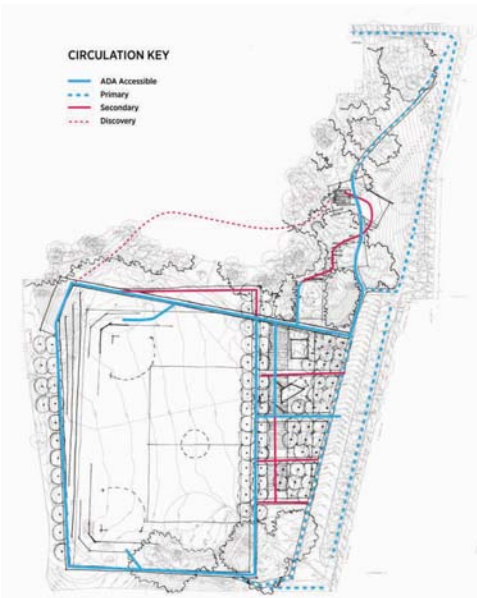
FRONT YARD NATIVE PLANTING



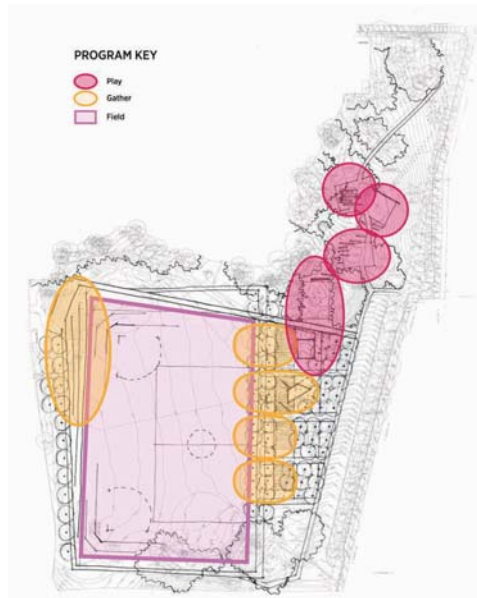
PRECEDENT IMAGES

DIAGRAMS

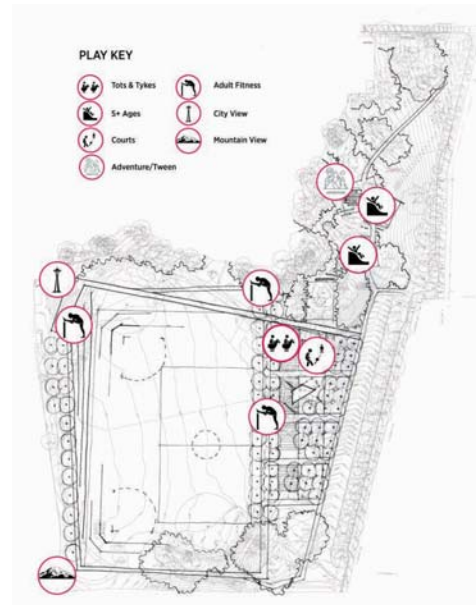
CIRCULATION



PROGRAM



PLAY



ATHLETICS







FLIGHT PATH LOOP TRAIL

GATHERING OVERLOOK

FRUIT ORCHARD

ATHLETIC FIELDS

EXERCISE STATIONS

TERRACED PICNIC LAWN

TREE FORT PLATFORM

SEQUENTIAL PLAY AREAS

ADVENTURE CHALLENGE PLAY AREA

ELEVATED VIEWING PLATFORM

MIGRATION PLAZA

PLANTED MOUND

LANDING PAD GATHERING SPACE

TAKE-OFF PLAY AREA (FOR TOTS)

SCULPTURAL PLAY MOUNDS

NATURAL MEADOW





PRECEDENT IMAGES



MEANDER | 蜿蜒 | EL MEANDRO | UỐN KHÚC | QALOOCA



MEANDERING FOREST PATH

GATHERING OVERLOOK

FRUIT ORCHARD

ATHLETIC FIELDS

MEANDERING FOREST PATH

DISCOVERY RIVER BED TRAIL

'RIVER BANK' PICNIC SLOPE

'SANDBAR' PLAY MOUNDS-TWEENS +

NATURAL PLANTED AREA

BUMPY RIVER BED PLAY AREA

PLAY MOUNDS-TOTS

COMMUNAL GATHERING PLAZA

LOG SNAG BENCHES

PLANTED MOUNDS

RIPARIAN STORMWATER PLANTING



PRECEDENT IMAGES



PLACE DOTS ON WHAT YOU LIKE...



PLACE DOTS ON THE LEVEL OF HOW MUCH YOU LIKE DIFFERENT ELEMENTS OF A SCHEME....

3 SCHEMES

3 CRITERIA

FOR EACH SCHEME THERE IS A SCALE. PLACE A DOT WHERE YOU THINK EACH DESIGN SCHEME FALLS IN TERMS OF CREATING SUCCESSFUL PLAY, GATHERING AND FIELD SPACES.

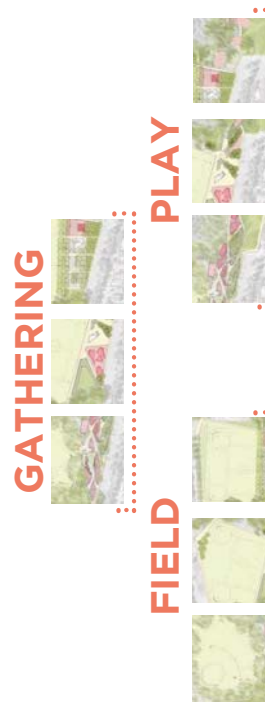
FRONT PORCH



FLIGHT PATH



MEANDER



PLAY AREA | 操场 | ÁREA DE JUEGO | KHU VỰC CHƠI | AAGGA

NOT SUCCESSFUL VERY SUCCESSFUL

GATHERING | 聚会场所 | REUNIÓN | THU THẬP | URURINTA

NOT SUCCESSFUL VERY SUCCESSFUL

FIELD | 运动场 | CAMPO | CẢNH ĐỒNG | DUURKA

NOT SUCCESSFUL VERY SUCCESSFUL

2019

2020

SEPTEMBER

OCTOBER

NOVEMBER

DECEMBER

JANUARY

FEBRUARY

10.15.2019 PROVVIEW #2

10.19.2019 COMMUNITY MEETING #1
LISTEN AND LEARN

12.03.2019 PROVVIEW #3

12.12.2019 COMMUNITY MEETING #2
CONCEPT OPTIONS

12.03.2019 PROVVIEW #3

12.12.2019 SURVEY MONKEY LAUNCH!

02.04.2020 PROVVIEW #4

02.12.2020 COMMUNITY MEETING #3
PREFERRED OPTION!

**PLEASE CHECK OUT THE BOARDS
& SHARE YOUR INPUT!**



FRONT PORCH



FLIGHT PATH



MEANDER