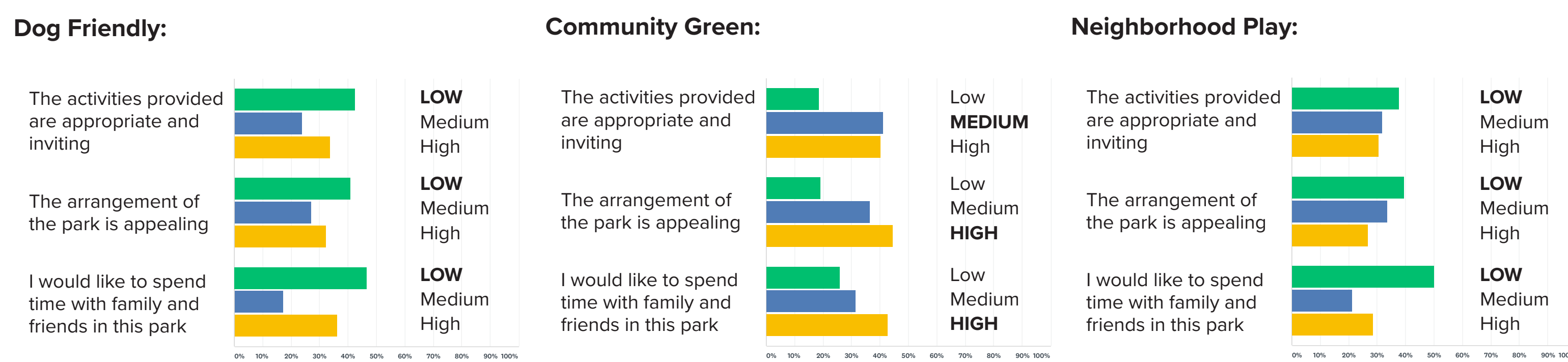


THANK YOU FOR YOUR INPUT!



PUBLIC MEETING 1 150+ participants PUBLIC MEETING 2 40 to 50 participants



ONLINE SURVEY 2: DATA EXCERPT 286 respondents

PUBLIC PROCESS

At Public Meeting 2, three concept alternatives were presented to gather preferences for a park that best fits this neighborhood. Neighbors provided their input at the meeting; additional comments and data were received through Online Survey 2.

AGENCY REVIEW

During this phase, Seattle Parks & Recreation Proview review occurred on April 23 and June 25, 2019. Additional coordination took place with the Seattle Department of Transportation for work within the adjacent streets' right-of-ways.

FINDINGS

At Public Meeting 2, neighbors provided valuable input on the three concept alternatives:

- **Dog Friendly Option** - Concern was expressed that the Dog Friendly Alternative could not provide a large enough off-leash area due to restrictions on impervious surface.
- **Neighborhood Play Option** - Many thought that this design provided opportunities already available in nearby parks and schools.
- **Community Green Option** - This was the favored alternative due to its flexibility and attraction to multiple ages.

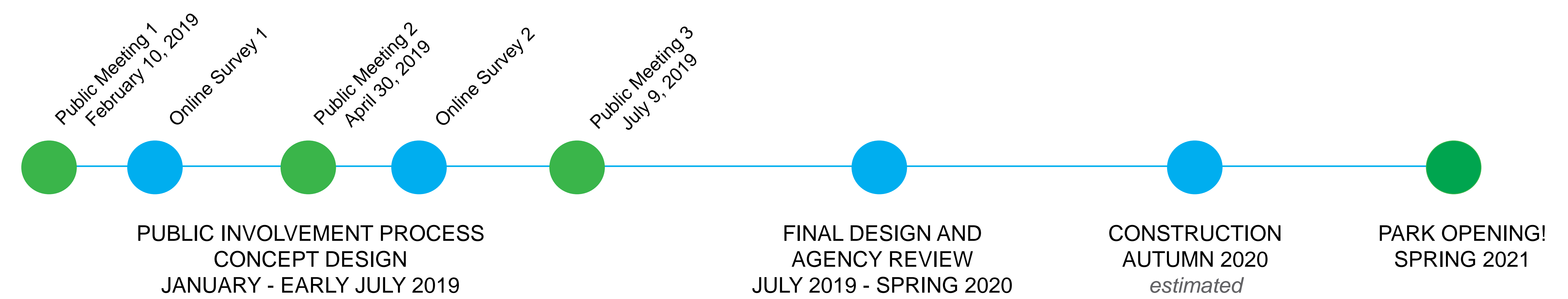
The following values were expressed for the new park:

- Attracting all ages to a park where one could meet neighbors.
- Providing multiple activities for individual use and group celebrations.
- Creating a neighborhood-focused park rather than a destination park with increased parking demand.
- Assuring safety for park users due to busy streets and adjacent alley.
- Including a multi-use lawn area for flexibility of use and ease of maintenance.
- Small child play opportunity for imaginative and active play
- Picnicking for small groups.
- Interest in native and adapted plants.
- Natural, less formal park setting with partial shade.

Considering the community's input and in consultation with Seattle Parks & Recreation, the **COMMUNITY GREEN** option has been selected for further development.



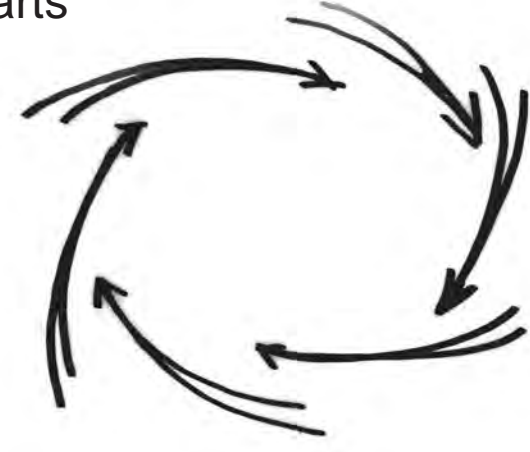
COMMUNITY GREEN: A NEIGHBORHOOD PARK FOR ALL



GATHERING
a meeting spot to:



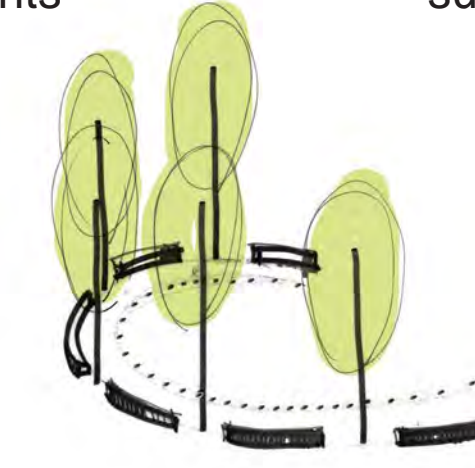
CONVERGENCE
creating a whole greater than its parts



ECHOES
the ties made here ripple beyond the site



REINFORCING FORM
with layering of elements

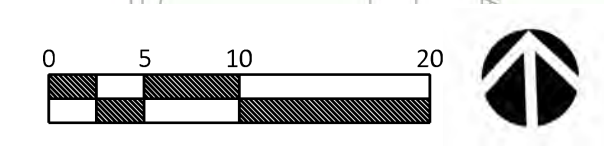
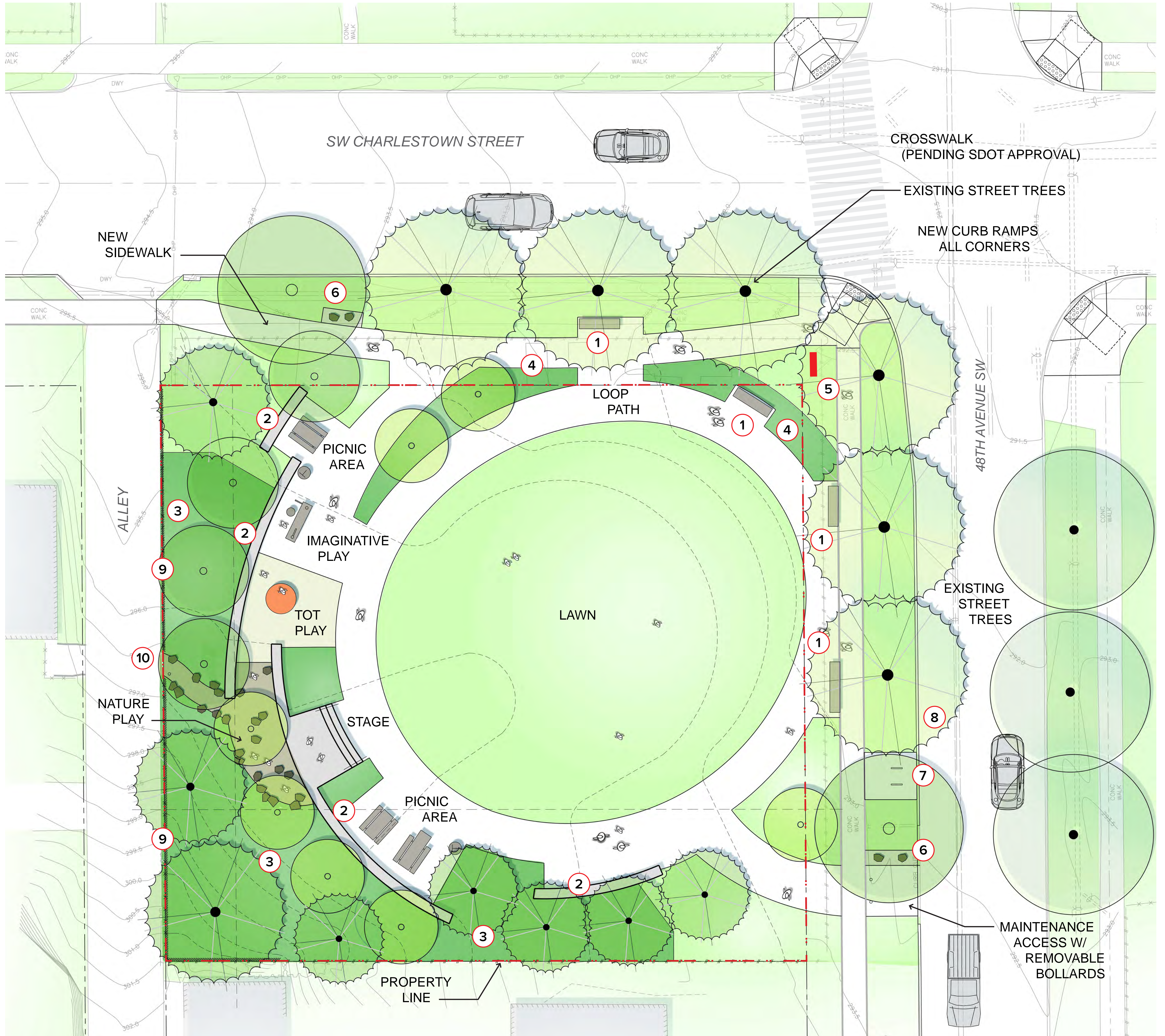


CREATING SPACE
supporting experiences



INSPIRATION

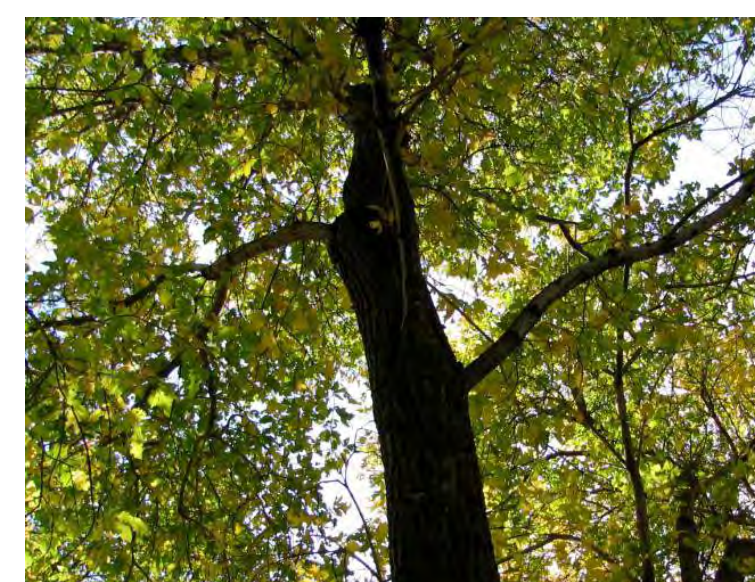
FORM



Stormwater dispersion into lawn and planting areas, reducing flow into the drainage system



Improved, amended soils to support healthy trees, lawn and vegetation



Tree canopy that provides habitat, mitigates stormwater, filters pollution and reduces heat-island effect



Robust vegetation and local materials that contribute to our natural environment and reduce carbon footprint

- 1 BENCHES
- 2 18" HIGH SEAT WALLS
- 3 NATIVE PLANTING
- 4 LOW PLANTINGS
- 5 PARK SIGN
- 6 DOG RELIEF AREA
- 7 BIKE RACKS
- 8 MAINTENANCE PARKING
- 9 3' HIGH METAL FENCE
- 10 PEDESTRIAN ENTRY FROM ALLEY

GREEN STRATEGIES

48TH AVENUE SW & SW CHARLESTOWN STREET
LANDBANKED SITE PARK DEVELOPMENT