

Ballard to Interbay Land Use Corridor Study Introductory Working Group Meeting

October 24, 2012

Wednesday **Morning** October 24, 2012

7:30 AM to 9:30 AM

Q-Cafe | 3223 15th Avenue West | Seattle, WA 98119

AGENDA

Coffee + Introductions	7:30 – 7:50am
Project Overview (scope, schedule, study area)	7:50 – 8:20am
Questions	8:20 – 8:40am
Public Engagement (working group, other strategies)	8:40 – 8:50am
Discussion	8:50 – 9:10am
Next Steps	9:10 – 9:30am

Meeting Materials Enclosed:

- Project Brief
- Working Group Guidelines and Preliminary Meeting Schedule

Ballard to Interbay Land Use Corridor Study

Introductory Working Group Meeting

October 24, 2012

WHAT & WHY

The City of Seattle Department of Planning and Development (DPD) has initiated a land-use study of an approximately 3-mile corridor along Elliot Avenue W and 15th Avenue NW generally between NW Market Street and W Prospect Street. The purpose is to develop a land-use vision for this heavily-traveled, multi-functional corridor, and to propose any needed changes to the Comprehensive Plan or the Land Use Code to support that vision. Specific goals will be finalized with the input of stakeholders, and will likely address the following:

- Clarify the desired mix and balance of land uses.
- Assess the potential for future development that leverages and supports transit investments.
- Identify opportunities for an improved public realm and placemaking.

The resulting recommendations help the City make decisions about proposed amendments to the Comprehensive Plan, development proposals, as well as inform future transportation studies.*

PROCESS

The proposed planning process will occur in two phases over a two-year period. However, the high-capacity transit study of Ballard to downtown may affect this schedule. The first phase will focus on the area south of the Ballard Bridge, and the second phase will focus on the area north of the Ballard Bridge.

PHASE 1.0 Project Startup / South of Ballard Bridge

2Q 2012-2Q 2013

- Task 1.1 Project Startup
- Task 1.2 Existing Conditions
- Task 1.3 Opportunities and Alternatives - South
- Task 1.4 Land Use Concept - South
- Task 1.5 Legislative Proposal - South

PHASE 2.0 North of Ballard Bridge

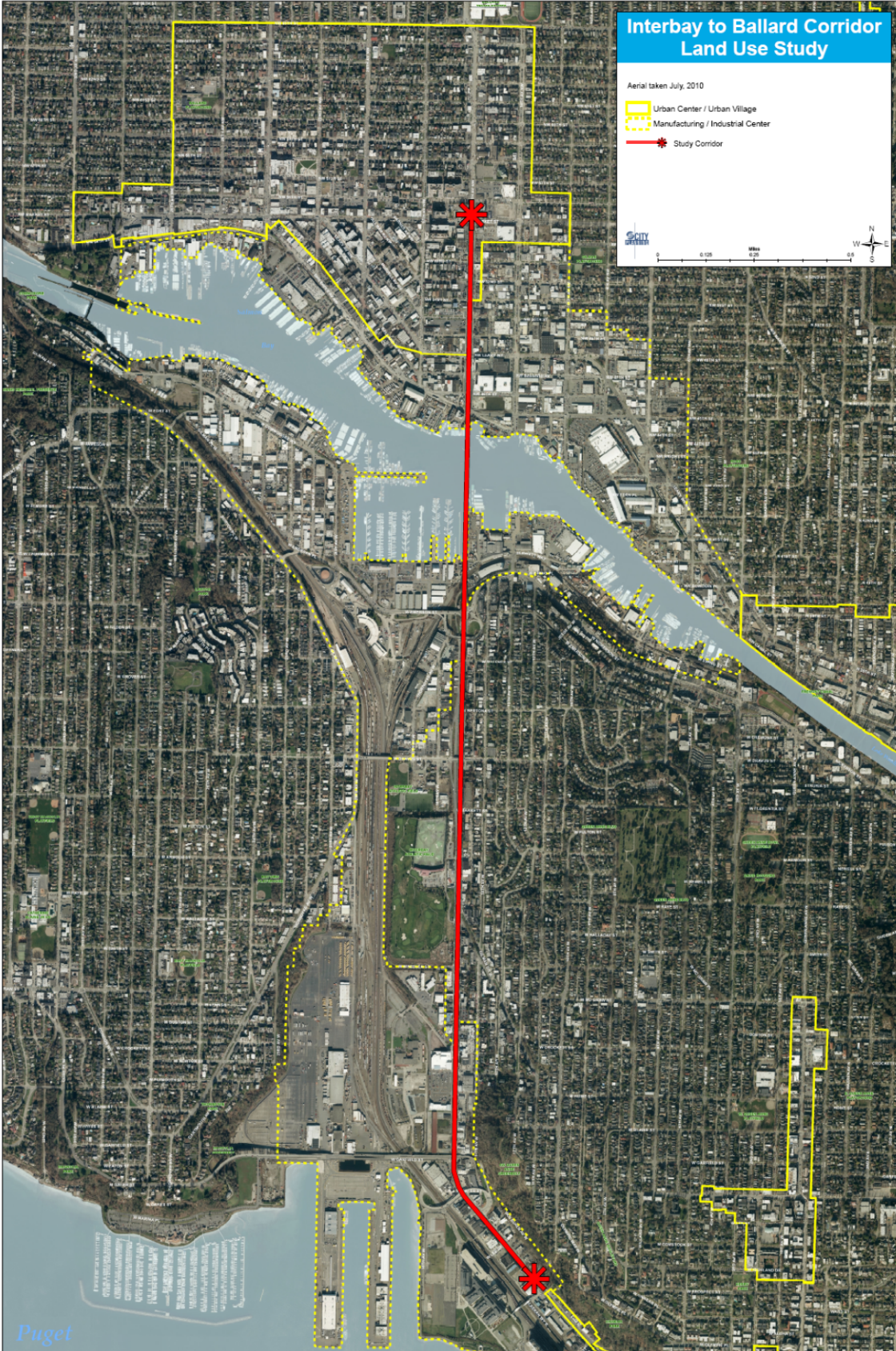
2Q 2013-2Q 2014

- Task 2.1 Project Update
- Task 2.2 Existing Conditions Update
- Task 2.3 Opportunities and Alternatives - North
- Task 2.4 Land Use Concept - North
- Task 2.5 Legislative Proposal - North

Outreach and engagement for the project will include the establishment of a two working groups, one for each subarea. The working groups will advise City staff on existing conditions, issues and opportunities, as well as provide input on land use concept alternatives and legislative proposals. Also, meetings to share information with the broader community will be held. Other stakeholder groups, such as advisory committees for any transportation studies in the corridor, may be consulted.

* Sound Transit and the Seattle Department of Transportation will study options for high capacity transit between Ballard and Downtown. The study is expected to begin in early 2013.

Ballard to Interbay Land Use Corridor Study Introductory Working Group Meeting October 24, 2012



Ballard to Interbay Land Use Corridor Study

Introductory Working Group Meeting

October 24, 2012

WORKING GROUPS

DPD will establish two working groups for this study– the Interbay study area and the Ballard study area. This format, a smaller group of stakeholders, allows stakeholders to share diverse perspectives and engage in real discussion. Working group discussions are just one way DPD will engage the stakeholders and the broader community for this project.

Role

The working groups will work with DPD to:

- Provide information on existing conditions
- Identify land use and development issues and opportunities
- Evaluate land use alternatives and public realm concepts
- Review and provide comments on legislative proposals
- Proactively share information with and gather input from other community members, organizations or constituencies

Guidelines for Working Together

DPD will:

- Document and share summaries of working group discussions.
- Acknowledge community concerns and aspirations.
- Provide feedback on how the input of working groups was used to develop recommendations.
- Report on the input received from working groups.

Working Group Members will:

- Keep an open mind. Listen carefully and try hard to understand the views of those who disagree with you. Accept that each perspective is valid and avoid dismissing others ideas
- If applicable, represent the perspectives, concerns, and interests of agencies or constituencies you represent whenever possible. Serve as a conduit of information to the broader community.
- Help keep the discussion on track. Stick to the questions: try not to ramble. Focus on moving forward by offering positive solutions
- It's OK to disagree, but don't be disagreeable. Respond to others how you want to be responded to.
- Take responsibility if we are late-comers to the meeting. Reach out to DPD staff or other members to catch-up and respect process that has occurred.

Decision Making

- City Council is ultimate decision-maker about changes to the Comprehensive Plan and/or Land Use Code. DPD is responsible for gathering information and community input, and developing to recommendations for City Council to consider.
- Working group members can offer information and advice, but will not be asked to develop recommendations, e.g. endorse a preferred alternative.

Ballard to Interbay Land Use Corridor Study

Introductory Working Group Meeting

October 24, 2012

PRELIMINARY MEETING SCHEDULE

Suggested meeting times and locations to be confirmed with working group members.

INTERBAY	Working Group Meeting #1 November 2012 Location: Q Café	Pre/Post-Meeting Walking Tour (optional) Review of Existing Conditions Identify Issues and Opportunities
	Working Group Meeting #2 December 2012 Location: Q Café	Alternative Land Use Concepts Public Realm Concepts
	Community Meeting January 2013 Location: TBD + Online (3 weeks)	Alternative Land Use Concepts Public Realm Concepts
	Working Group Meeting #3 February 2013 Location: Q Café	Preferred Land Use Concepts Preferred Public Realm Concepts
	Community Meeting March 2013 Location: TBD + Online (3 weeks)	Preferred Land Use Concepts Preferred Public Realm Concepts
	Working Group Meeting #4 April 2013 Location: Q Café	Legislative Proposals for Interbay Study Area
	Comprehensive Plan Amendments Land Use Code Amendments	May 15, 2013 - Proposed amendments submitted to Council May to July 2013 – Council “docketing” (proposals selected for further review) January 2014 – Public Hearing by City Council PLUS Committee March 2014 – Council considers recommended amendments

Ballard to Interbay Land Use Corridor Study Introductory Working Group Meeting

October 24, 2012

BALLARD	Working Group Meeting #1 Spring 2013 Location: Ballard Library	Pre/Post-Meeting Walking Tour (optional) Review of Existing Conditions Identification of Issues and Opportunities
	Working Group Meeting #2 Summer 2013 Location: Ballard Library	Alternative Land Use Concepts
	Working Group Meeting #3 Summer 2013 Location: Ballard Library	Public Realm Concepts
	Ballard Community Meeting Fall 2014 Location: TBD + Online (3 weeks)	Alternative Land Use Concepts Public Realm Concepts
	Working Group Meeting #4 January 2014 Location: Ballard Library	Preferred Land Use Concepts Preferred Public Realm Concepts
	Ballard Community Meeting March 2014 Location: TBD	Preferred Land Use Concepts Preferred Public Realm Concepts
	Working Group Meeting #5 April 2014 Location: Ballard Library	Legislative Proposals for Ballard Study Area
	Comprehensive Plan Amendments Land Use Code Amendments	May 2014 - Proposed amendments submitted to Council May to July 2014 – Council “docketing” (proposals selected for further review) January 2015 – Public Hearing by City Council PLUS Committee March 2015 – Council considers recommended amendments

PROJECT CONTACTS

Patrice Carroll, Senior Planner, DPD

206-684-0946

patrice.carroll@seattle.gov

Geoff Wentlandt, Senior Urban Designer, DPD
DPD Fax

206-686-3586

geoff.wentlandt@seattle.gov

206-233-7883

Project Website <http://dpdwinw134/DPD/Planning/EnvisioningInterbay/Overview/default.asp>