



Seattle Industrial & Maritime Strategy

Citywide Advisory Group

Kick-Off Meeting
November 6, 2019

Today's Agenda

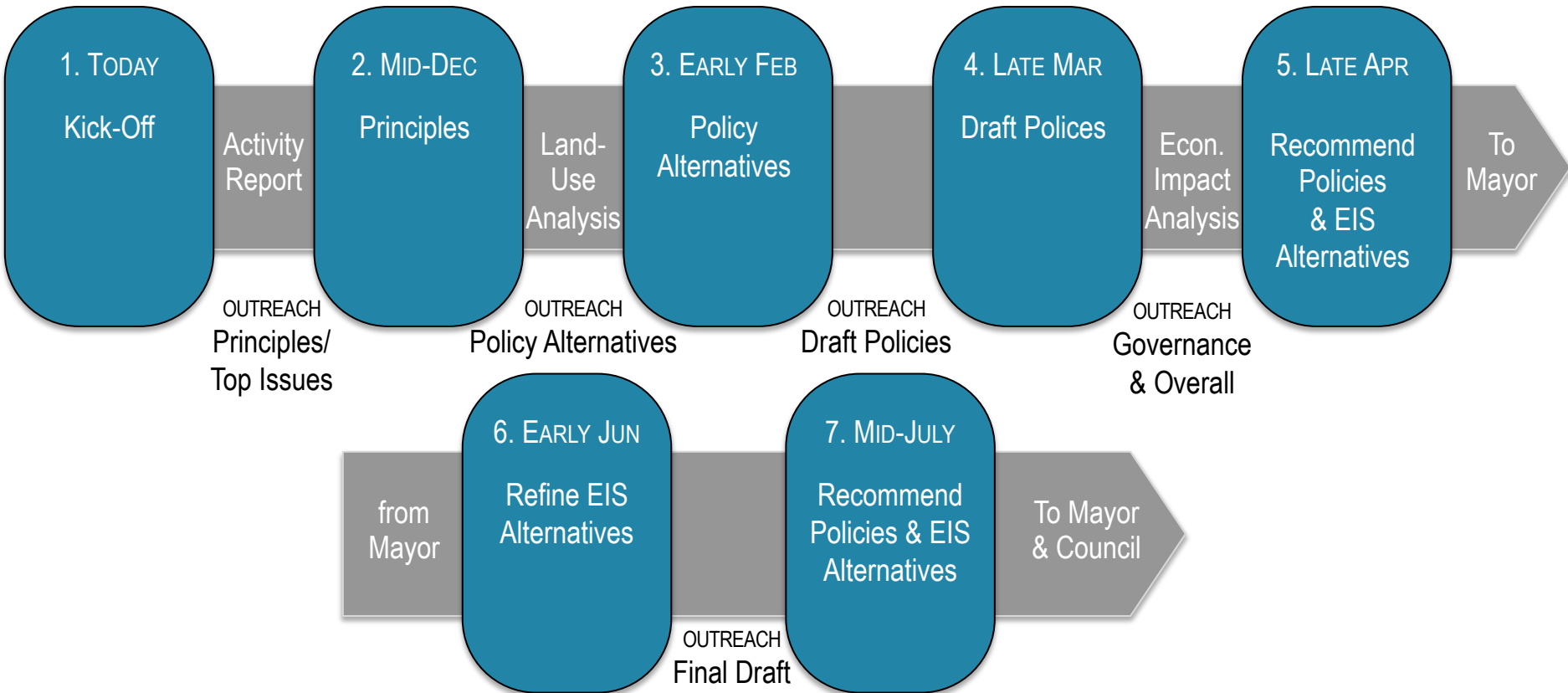


- Mayor's Welcome
- Project Purpose
- Process
- Strategy Context
- Final Product
- Racial Equity
- Group Expectations & Outcomes
- Summary & Next Steps



Industrial & Maritime Strategy Planning Process

7 Citywide Advisory Group Meetings





SEATTLE INDUSTRIAL LANDS STRATEGY - PROCESS TIMELINE

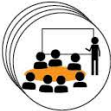
Citywide Group Meetings



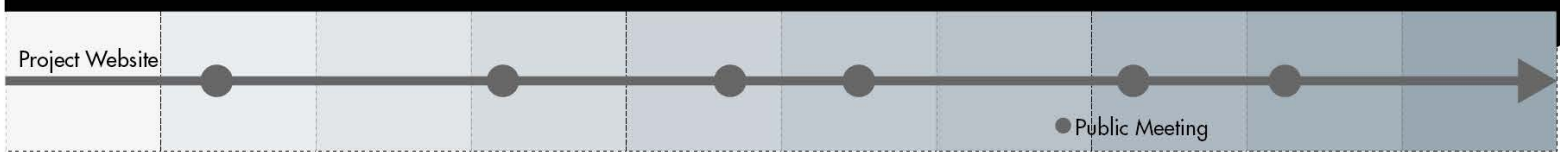
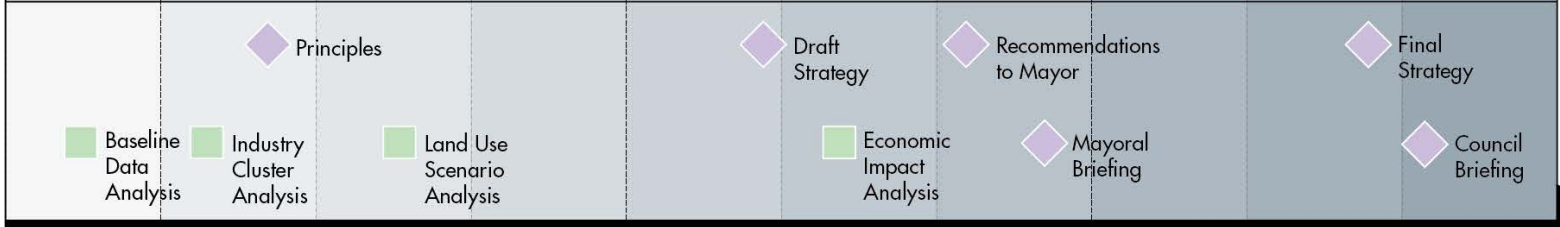
One on One Meetings



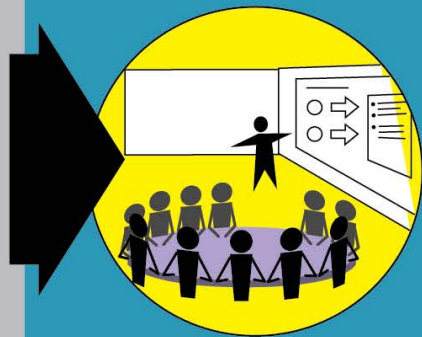
Neighborhood Group Meetings



Deliverables



Meeting Cycle



Advisory Group



Follow-up
Questions & Issues



Briefing Materials

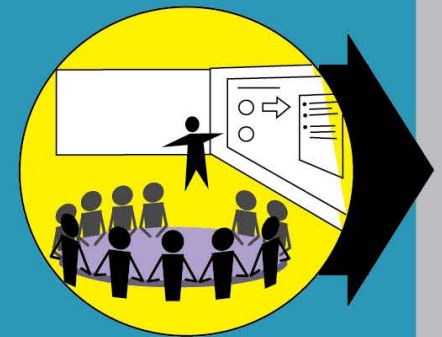


Next Agenda
& Topic Overview

Briefing Packet



One-on-One
Engagement



Advisory Group



Roster & Co-chairs

Citywide Advisory Group

Sally Clark
University of Washington

Nicole Grant
MLK Labor

Brian Surratt
Alexandria

Alex Hudson
Transportation Choices Coalition

Barbara Nabors-Glass
Seattle Goodwill

Charley Royer
Public Facilities District

Commissioner Peter Steinbrueck
Port of Seattle

Councilmember Pacheco
Seattle City Council

Dave Gering
*Manufacturing Industrial Council
of Seattle*

Erin Goodman
SODO Business Improvement Area

Fred Mendoza
Public Stadium Authority

Fred Rivera
Seattle Mariners

Greg Smith
Urban Visions

Johan Hellman
BNSF

John Persak
*International Longshore and
Warehouse Union*

Jordan Royer
Pacific Merchant Shipping Association

Marie Kurose
*Workforce Development Council
of Seattle-King County*

Mike Stewart
*Ballard Alliance Business Improvement
Area*

Peter Nitze
Nitze-Stagen

Rick Kolpa
Prologis

Robb Stack
Stack Industrial Properties

Sam Farrazaino
*Georgetown Safety Task
Force/Georgetown Strong*

Terri Mast
Inlandboatman's Union



Rosters

Georgetown/South Park

Sam Farrazaino
Georgetown Safety Task Force/Georgetown Strong

Kevin Kelly
Recology

John Bianchi
H&E Parts International

Clint Burquist
Georgetown Community Council

Roger Bialous
Georgetown Brewing

Paulina Lopez
Duwamish River Cleanup Coalition

Maria Ramirez
Duwamish Valley Housing Coalition

Jon Holden
Machinists Union 751

Veronica Wade
South Seattle College

Karen Lee
Pioneer Human Services

SODO

Mark Miller
Macmillan-Piper

Joe Ritzman
SSA Marine

Lisa Howard
Alliance for Pioneer Square

Maiko Winkler Chin
Seattle Chinatown International District Preservation & Development Authority

Rod Judd
WSDOT

Erin Goodman
SODO Business Improvement Area

Fred Mendoza
Public Stadium Authority

Fred Rivera
Seattle Mariners

John Persak
International Longshore & Warehouse Union

Charley Royer
Public Facilities District



Rosters

Ballard

Eugene Wasserman
North Seattle Industrial Association

Warren Aakervik
Ballard Oil

Haley Keller
Peddler Brewing

Mike Stewart
Ballard Alliance Business Improvement Area

Suzie Burke
Fremont Dock Company

Tom Friedman
Ballard District Council President

Eric Nelson
Nordic Heritage Museum

Brad Benson
Stoup Brewing

Shaunie Wheeler
Teamsters Joint Council

Interbay

Ginny Gilder
Force 10 Hoops/Seattle Storm

Nathan Hartman
Kerf Design

Daniel Martin
Seattle Pacific University

Richard de Sam Lazaro
Expedia

Doris Koo
Yesler Community Collaborative

Terri Mast
Inlandboatman's Union

Johan Hellman
BNSF Railway



Ground Rules



- Everyone's voice counts
 - Take turns
 - Each perspective is valid
 - Listen respectfully
 - Questions are okay
- Forward movement
- Positive recommendations



Responsibilities



- **Participate** regularly & on-time (designated alternate)
- **Positive** communication
- Represent your **perspective**
- **Acknowledge any conflicts** of interest
- **Leverage resources** & information
- Advocate for **recommendations**
- Institutional **knowledge**
- **Conduit** of information



Responsibilities



- **Participate** regularly & on-time (designated alternate)
- **Positive** communication
- Represent your **perspective**
- **Acknowledge any conflicts** of interest
- **Leverage resources** & information
- Advocate for **recommendations**
- Institutional **knowledge**
- **Conduit** of information



Decisions: Working Consensus



- **Everyone** gets their say
- Recommendations you can **“live with”**
- If we must vote:
80% = consensus
(in attendance)



Decisions: Working Consensus



- **Everyone** gets their say
- Recommendations you can **“live with”**
- If we must vote:
80% = **consensus**
(in attendance)



Strategy Context



Land Use Policy Background

Mayor Durkan's
Maritime Industrial Strategy
Meeting #1 November 6, 2019



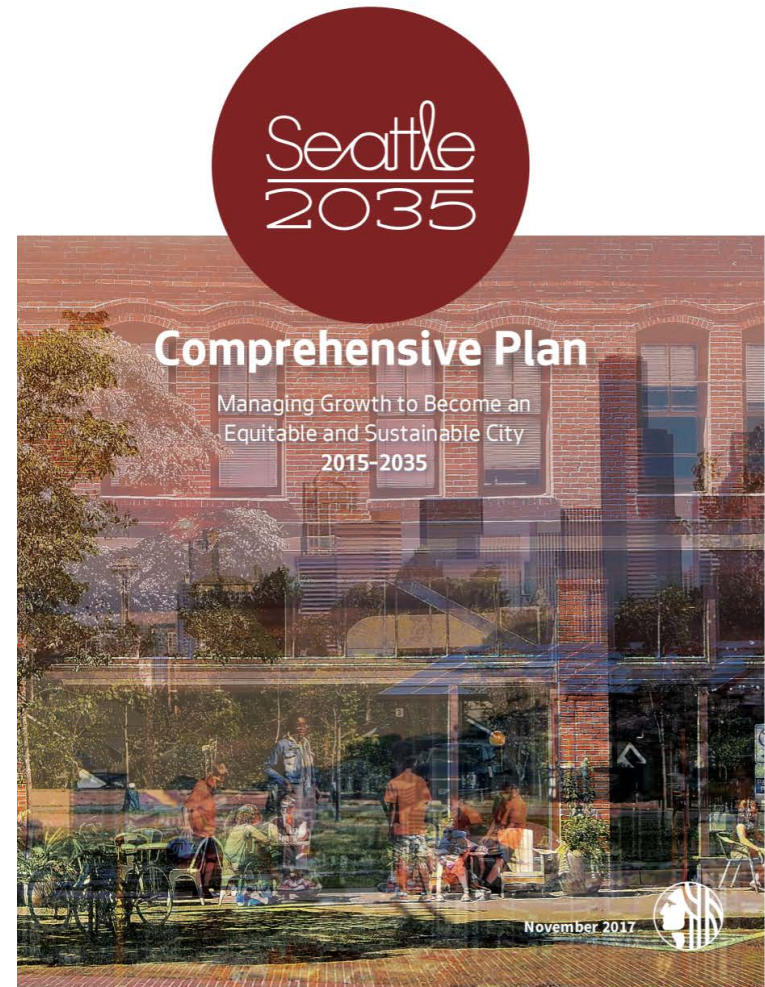
Why the City cares about industrial lands

- Accessible jobs
- Economic diversity contributes to resilience
- Activities that can't occur elsewhere
- Infrastructure investment



Current Comprehensive Plan Policies

- Use industrial land for industrial purposes.
- Restrict uses that may negatively affect the function of industrial areas.
- Preserve industrial land in proximity to rail and water-dependent facilities.
- Reduce the possibility of conflicts with adjacent less-intensive uses.



Previous Industrial Lands Advisory Panel (2017)

- 28 members
- Equally divided between 2 camps: industry supporters & redevelopment advocates
- Working group of 8 – 4 from each camp + staff
- Full Panel met about 6 times, working group met more, sometimes every 2 weeks
- Working group developed draft recommendations
- The draft recommendations were not formally approved or adopted



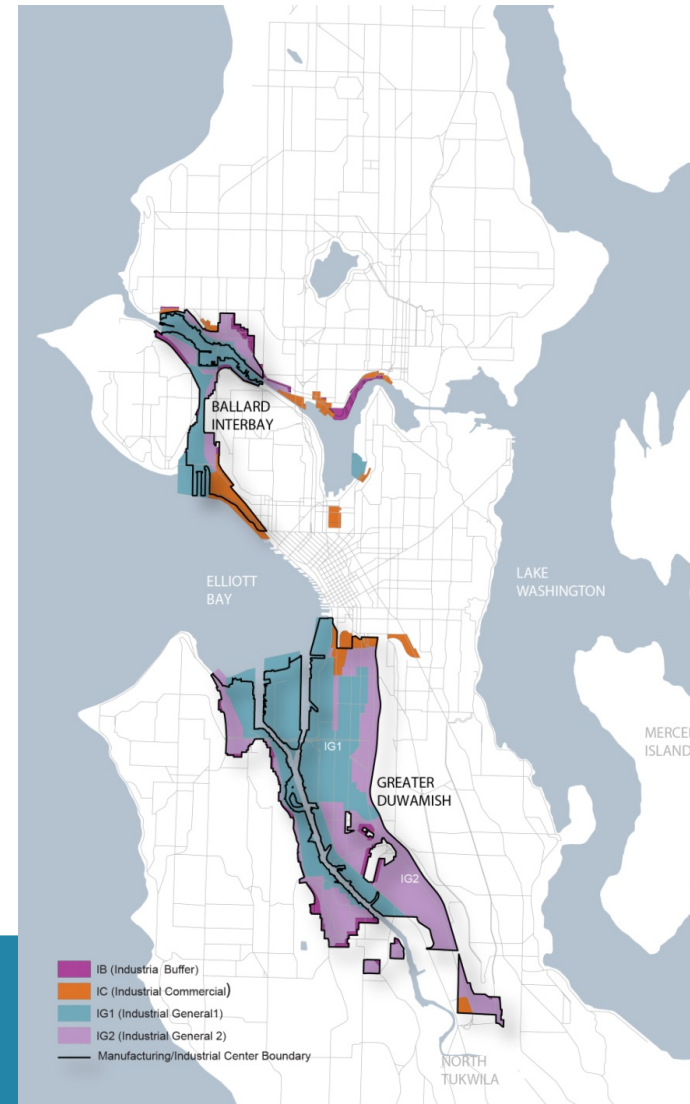
2017 Advisory Panel Draft Concepts

- “SODO” Concept - Incentive for office space in exchange for one floor of new industrial space
- Minimize new single occupancy vehicle trips in SODO
- Add policies into Comprehensive Plan making it harder to remove land from the Manufacturing Industrial Centers (MICs)
- Address “loopholes” in industrial zones
- Revise noise ordinance to favor industrial businesses
- Increase funding for workforce training
- Revive support for industrial businesses
- Conduct area studies in Interbay, East Ballard and Georgetown



What's New:

- All of the City's Manufacturing / Industrial Centers are included in the study area for a **comprehensive approach**.
- We encourage a **future-oriented** proactive approach.



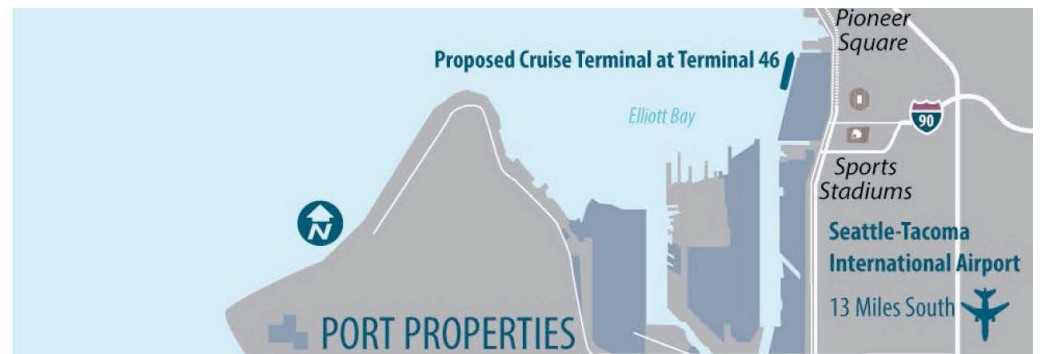
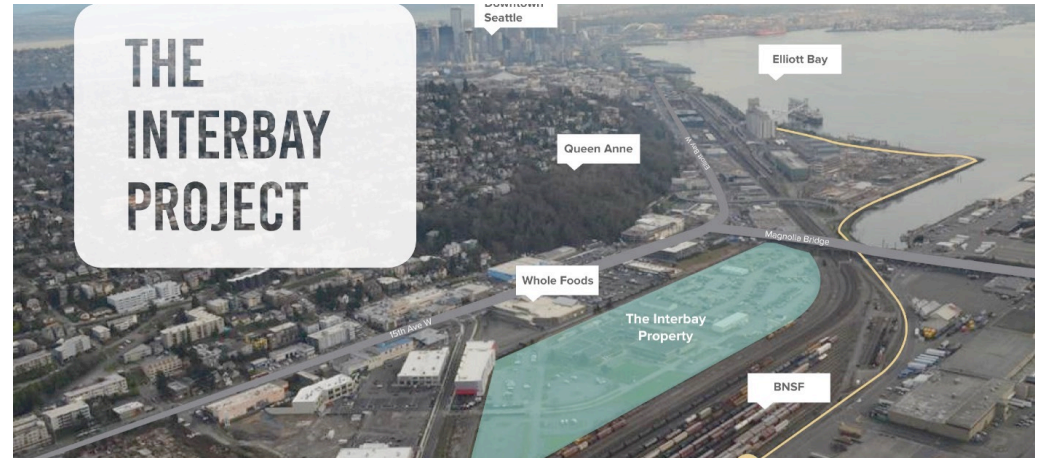
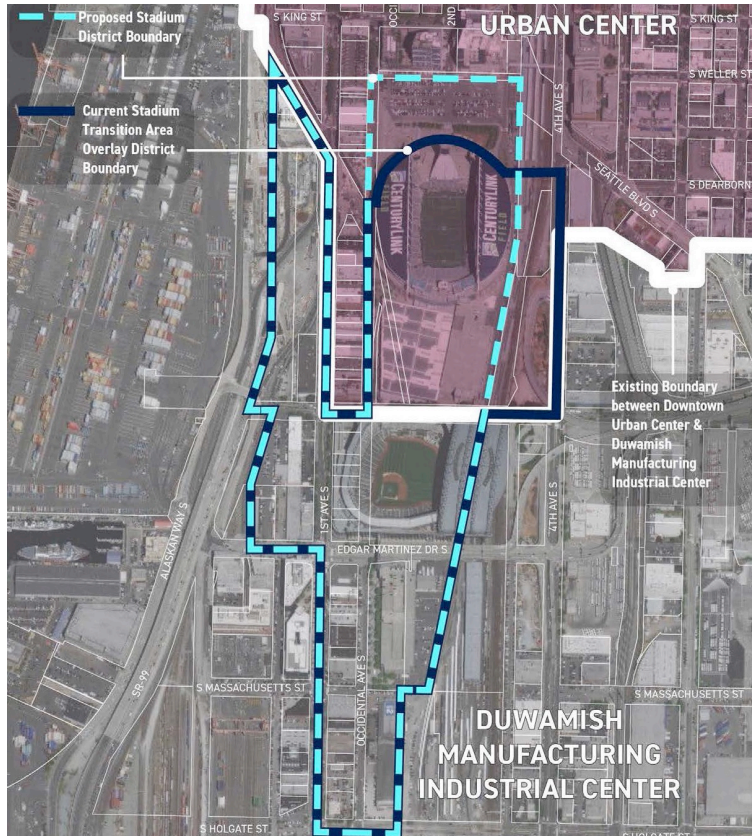
What's New: Address long-term policy drivers



Duwamish Valley Action Plan
Advancing Environmental Justice & Equitable Development in Seattle



What's New: Emerging Land Use Challenges



Final Product

(see handout)



Racial Equity Lens



Racial Equity Lens

- City Values
- Initial Approach

Strategic Equity Questions

- Who is not represented in this process?
- Who stands to benefit from the policies we develop and who will be burdened?
- What are the barriers to achieving racial equity in the maritime, fishing, construction, and food & beverage industries?
- How can this work support environmental justice?
- And, how will this work address the forced occupation of native land?
- How do Advisory Group members personally see themselves as a part of this work?



Advisory Group Members Expectations & Desired Outcomes





Next Meeting
Citywide Advisory Group:

Week of December 16

TBD