



Terry Pettus Park Renovation Design Commission Meeting #1

September 17, 2020



Design & Planning Team

Prime Consultant

Jones & Jones Architects and Landscape Architects



Mario Campos
Principal-in-Charge



Duane Dietz
Project Manager



Janelle Lotzgesell
Landscape Architect

Sub-Consultants

KPFF, Civil Engineering

David Schwarz
Alex Sundell
Dan Alire

Hart Crowser, Geotechnical Engineering

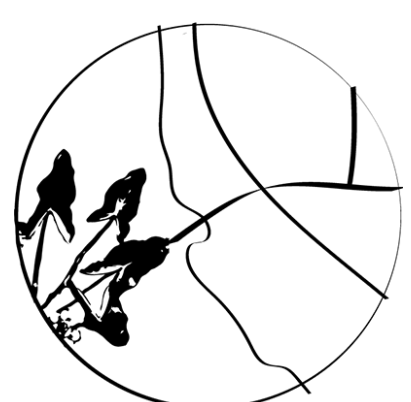
Jim Shannon

BrN, Electrical Engineering

Bryan Boeholt

Seattle Parks and Recreation

Susanne Rockwell, Planner
Libby Hudson, Planner
Toby Ressler, Project Manager
Karen O'Connor, Communications



Terry Pettus Park Renovation
Design Commission Meeting #1 - September 17, 2020



Project Background

Scope

- Remove and replace failing park features (i.e. stairways, retaining walls, bulkhead, boardwalk, pier and float)
- Enhance access to Lake Union by providing an accessible route to the water and new dock
- Shoreline restoration
- Create seating and picnicking opportunities
- Improve sightlines and sense of safety

Total Project Budget

\$1,500,000

Schedule

- Online survey to gather early public input
- Proview Presentation #1, July 21, 2020
- Public Presentation #1, July 29, 2020
- Proview Presentation #2, September 8, 2020
- **Design Commission #1, September 17, 2020 (Concept Design Options)**
- Preferred Schematic Design
 - Public Presentation #2, September 23, 2020
 - Design Commission #2, October 2020
- Design Development (30% plans)
 - November 2020 - January 2021
 - Proview Presentation #3 January 2021
- Begin Permitting Process*
 - February 2021
 - Proview Presentation #4 March 2021
 - Proview Presentation #5 November 2021
- Construction Documents (100% CD)
 - February 2022
 - Proview Presentation #6 January 2022

*SIP application submitted August 31, 2020



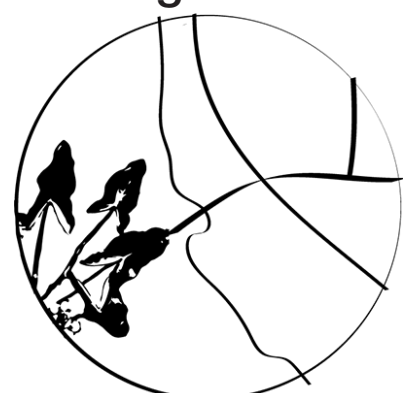
Existing Dock



View toward water



Existing bench & retaining walls



History & Legacy

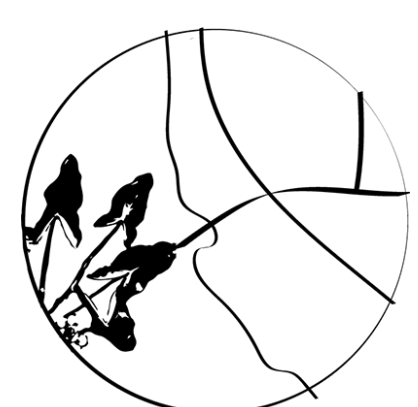
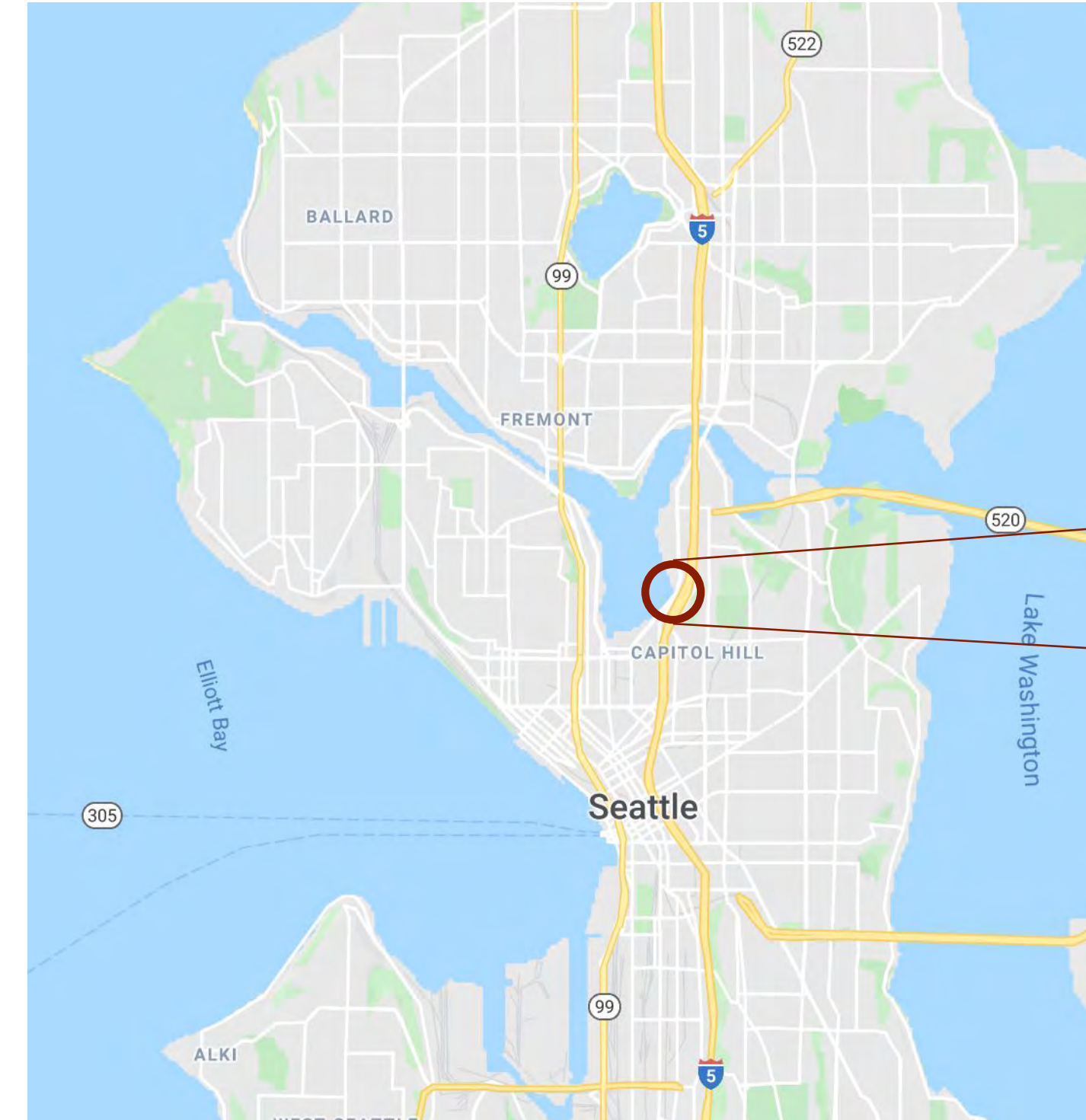
History of the Park

- Park originally built in 1971
- Feasibility study conducted 2019
- Adjacent property acquisition March 2020

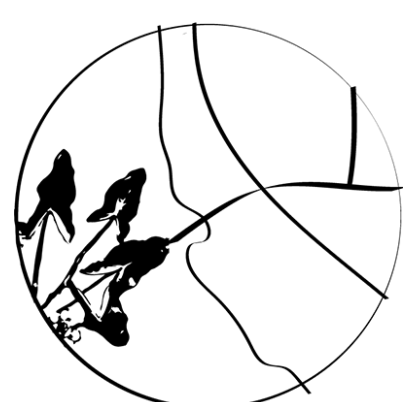
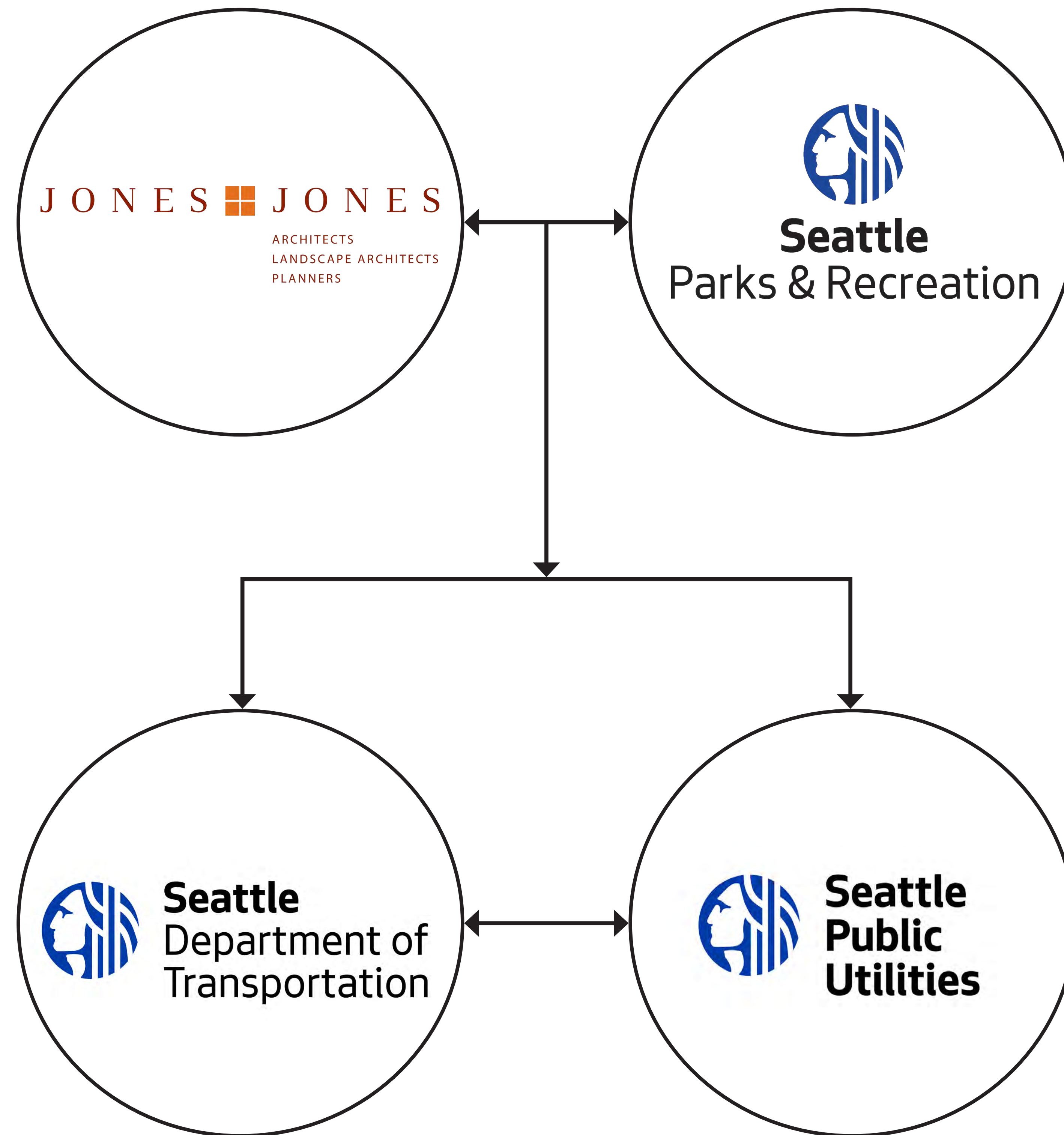
Terry Pettus Legacy

- This park is named in honor of Terry Pettus, who was a progressive-minded newspaper reporter and author, who became Washington state's first member of the American Newspaper Guild
- He had a social conscience, was a social activist
- He helped form the Floating Homes Association on Lake Union
- He played a role in cleaning up the waters and shorelines of of Lake Union

Terry Pettus Park Vicinity



Interagency Coordination



Project Evolution

SPR-Initiated Online Survey



Review Survey Results, Develop Design Intent & Guiding Principles



Feasibility Study by Anchor QEA

JONES JONES
ARCHITECTS
LANDSCAPE ARCHITECTS
PLANNERS

Design Team Selected

Design Intent

Enhance a small, waterfront respite

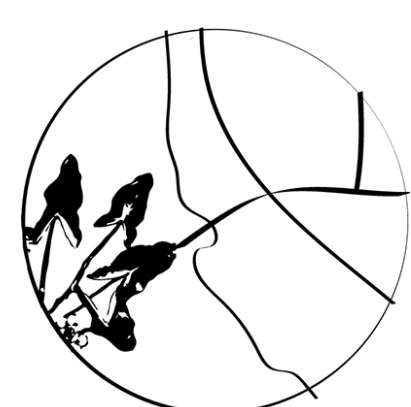
- Provide universal access to a majority of the site
- Improve access for hand-launch watercraft users
- Promote visitor safety
- Contribute to habitat restoration

The Guiding Principles were developed based on our response to input we received from the community and Seattle Parks, as well as our assessment of the opportunities and constraints of the existing Park and how its redevelopment could best serve its constituents. Design decisions are weighed against these principles to ensure that the goals for the Park are being met.

Guiding Principles

The following principles aim to support sustainability, equity, and a healthy Seattle community:

- Create a welcoming and accessible space for all
- Enhance shoreline ecology through restoration
- Celebrate the history and legacy of Terry Pettus Park
- Provide access to the water
- Provide options for hand-launch watercraft put-in/take-out
- Promote sense of safety for park visitors
- Enhance views to and through the Park
- Promote the health and well being of park visitors and neighbors
- Encourage multiple types of park visitors
- Use sustainable & durable materials



Project Evolution

SPR-Initiated Online Survey



Reviewed Survey Results, Developed Design Intent & Guiding Principles



Coordinate with Agencies (ongoing)



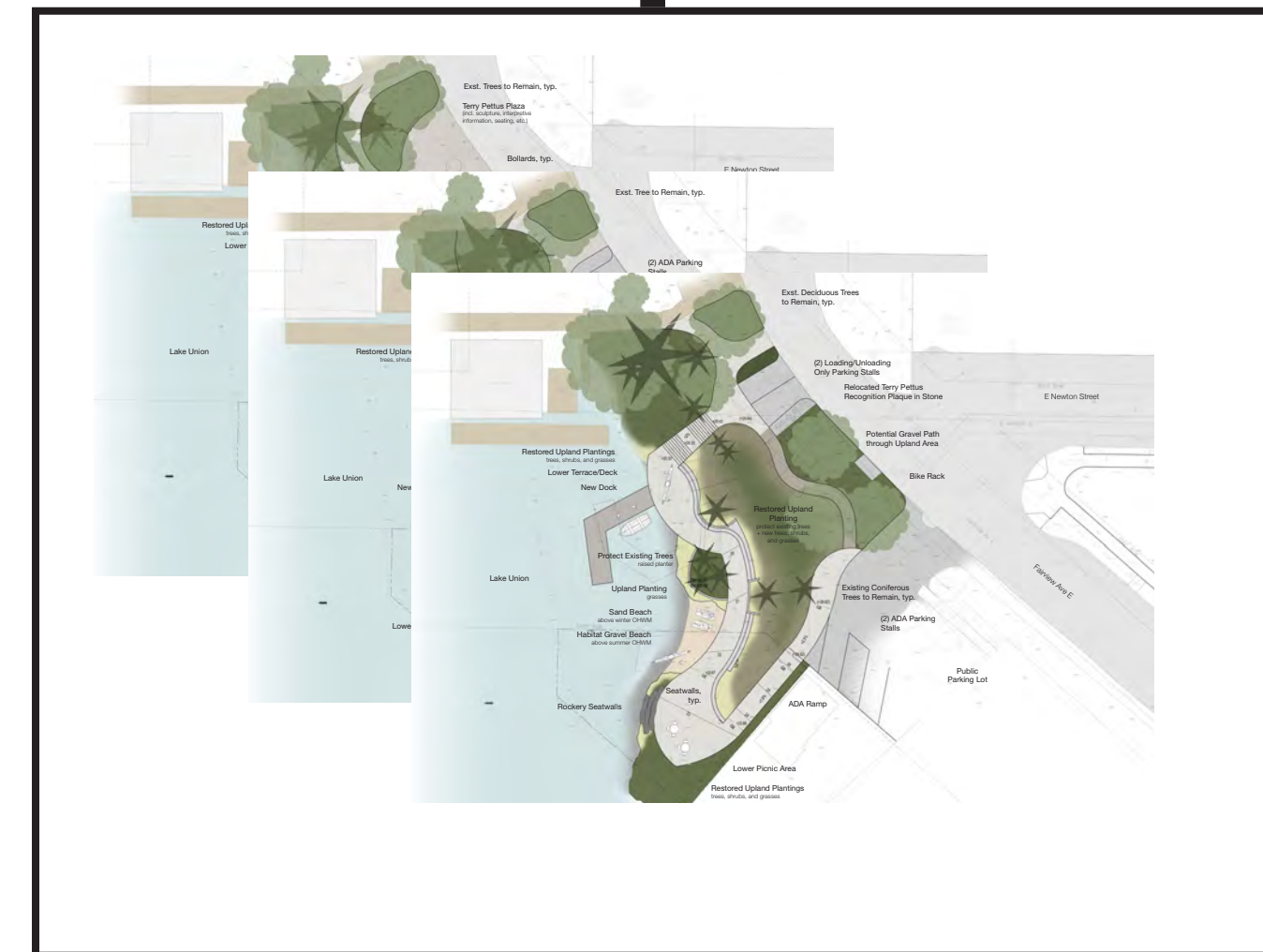
Schematic Design (under development)



Feasibility Study by Anchor QEA

JONES JONES
ARCHITECTS
LANDSCAPE ARCHITECTS
PLANNERS

Design Team Selected



Developed four (4) concept options; presented to ProView and to Public; collected feedback

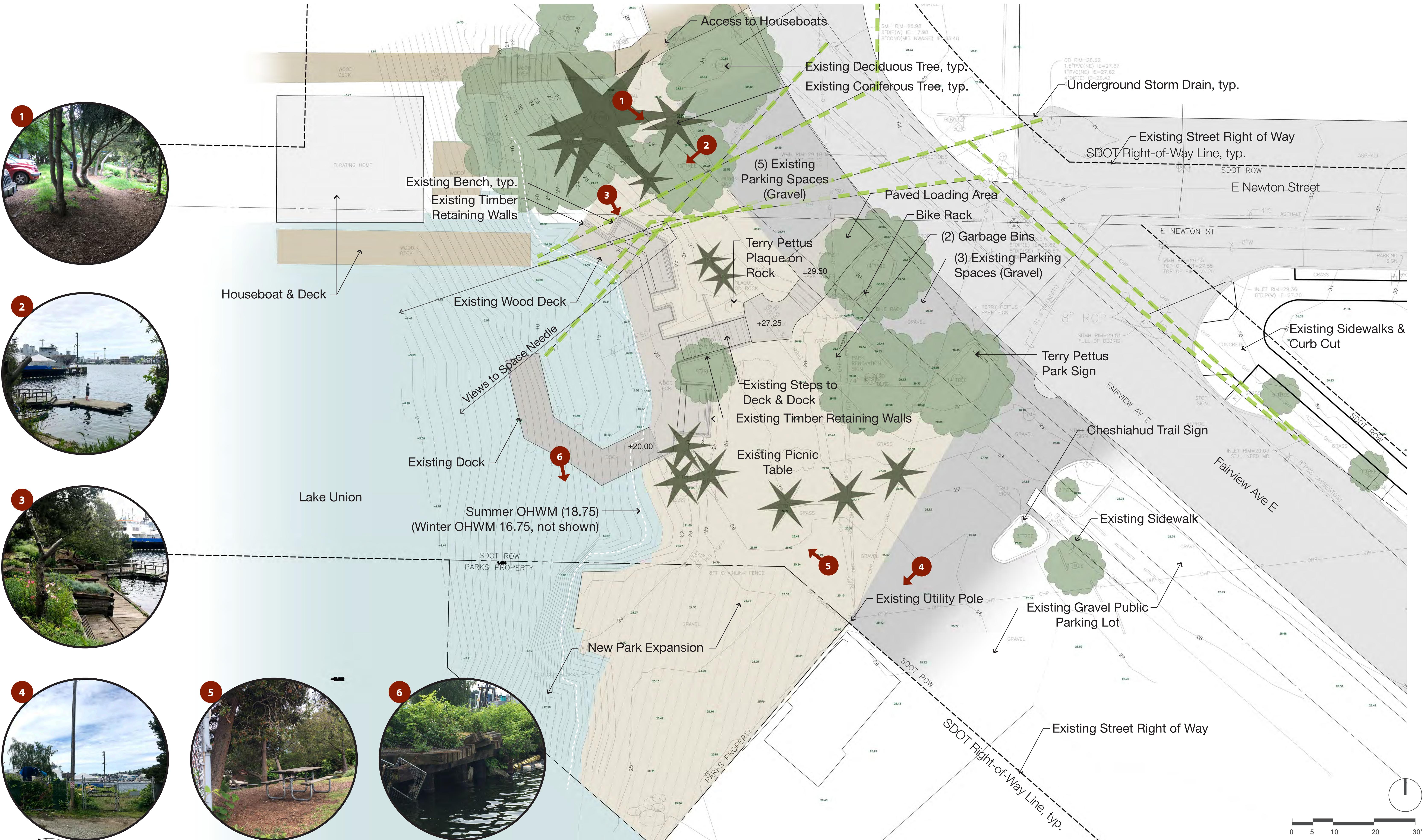
- Proview #2
- Public Meeting #2
- Design Refinement



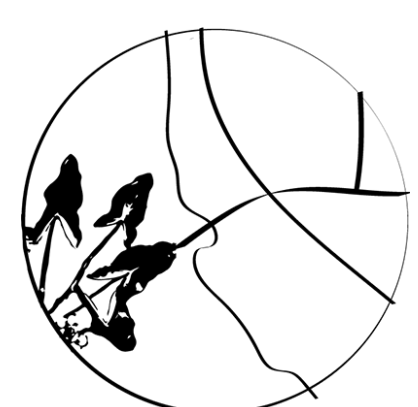
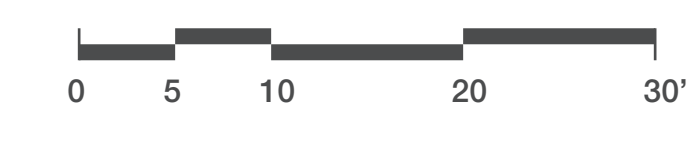
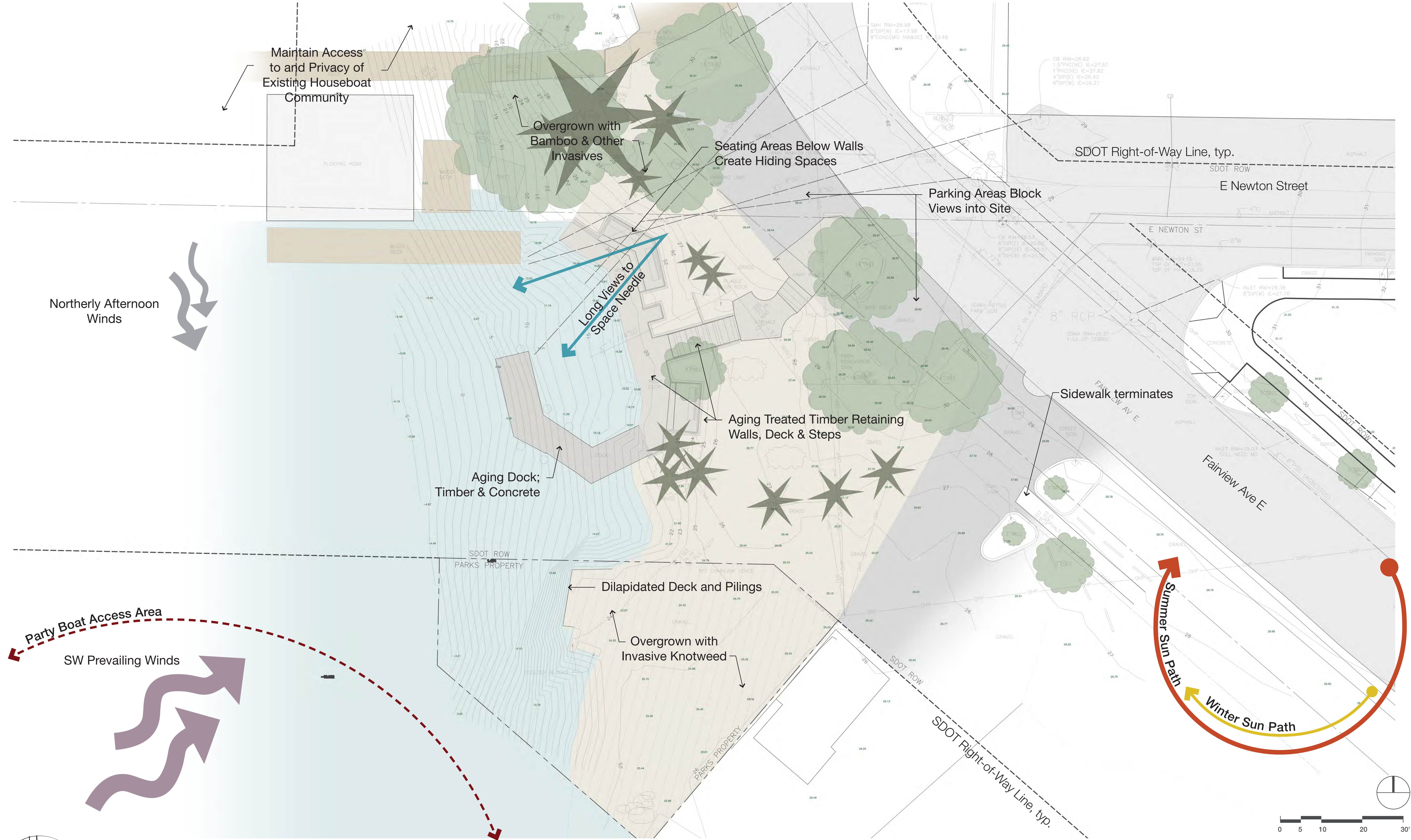
Terry Pettus Park Renovation
Design Commission Meeting #1 - September 17, 2020



Existing Conditions: Site & Photo Inventory



Existing Conditions: Site Analysis



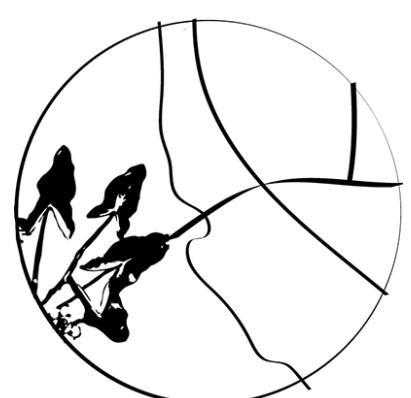
Key Considerations for Design

Sustainability & Resiliency

- Shoreline restoration, native plant selection
- Site integrated in context
- Environmental clean up (property acquisition)
- Climate change/sea level rise
- Materials selection

Race & Social Justice

- Universal access
- Community engagement
- Interpretation: Terry Pettus, social and environmental activism



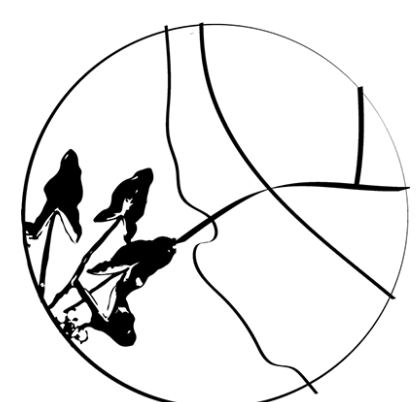
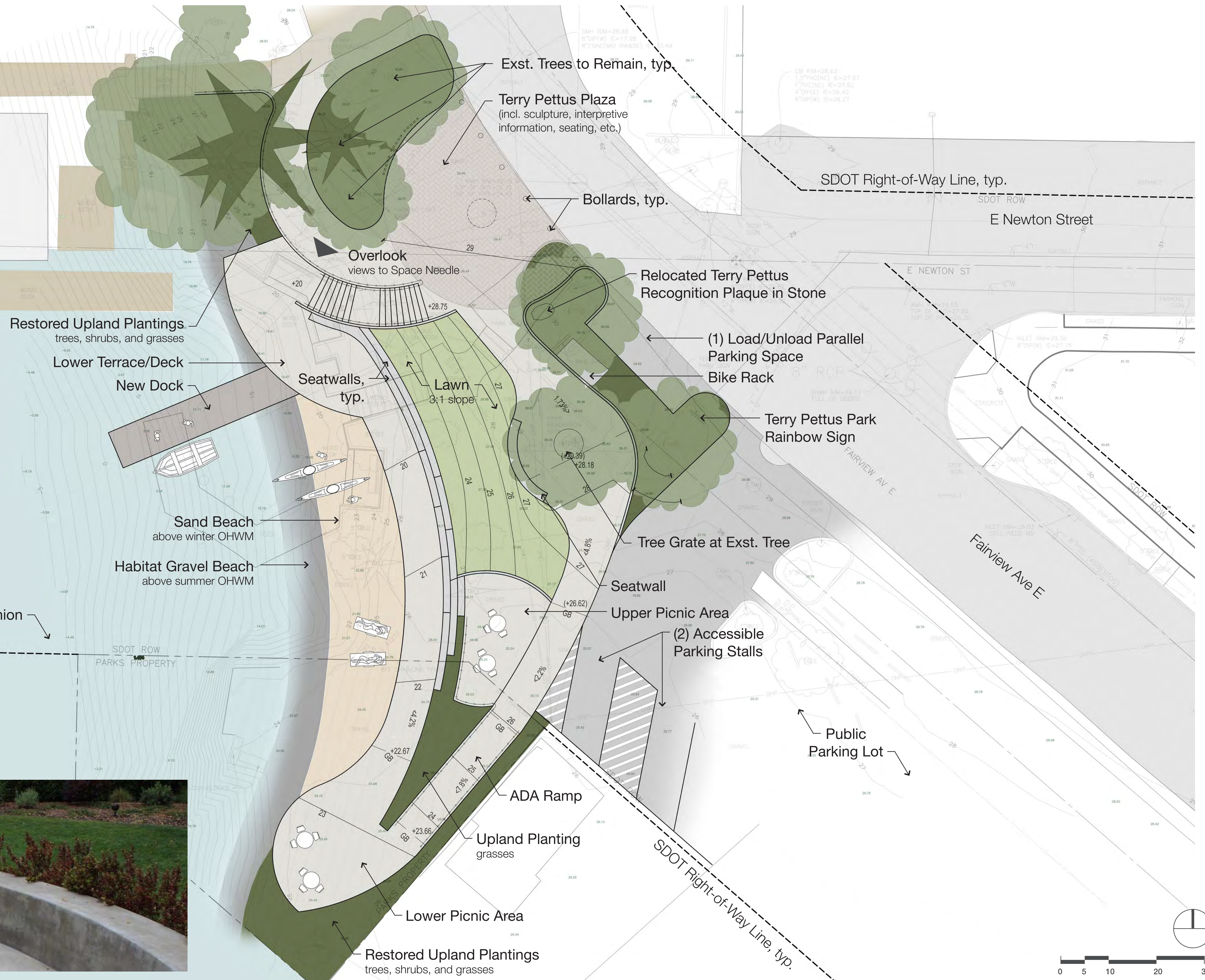
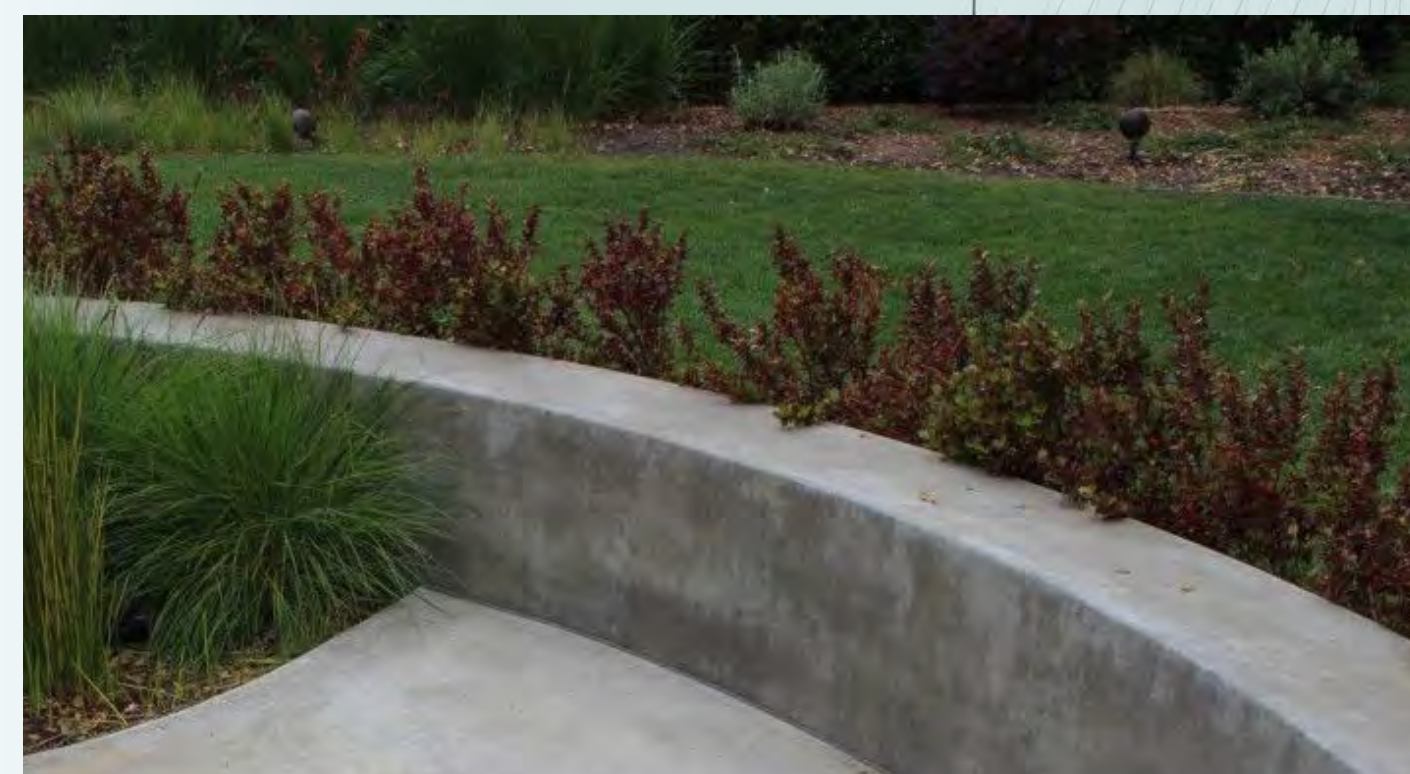
Concept: The Lawn

Key Features

- Large welcome plaza; could offer interpretive exhibits, art, etc.
- Large planting area at welcome area that protects existing trees
- Direct stair route to lower level
- Multiple picnic areas
- Sloped lawn (3:1 max slope)
- ADA parking at South
- One (1) designated standard parking/loading stall

Responding to Community Feedback

- Moderate upland shoreline restoration
- Ample seating opportunities (seatwalls)
- Varied small boat launch areas (dock & beach)
- Long beach for launching and lounging



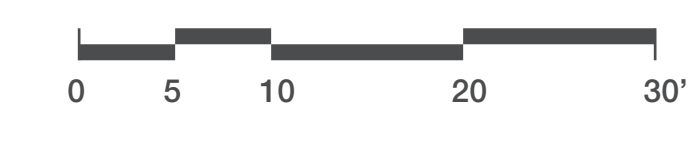
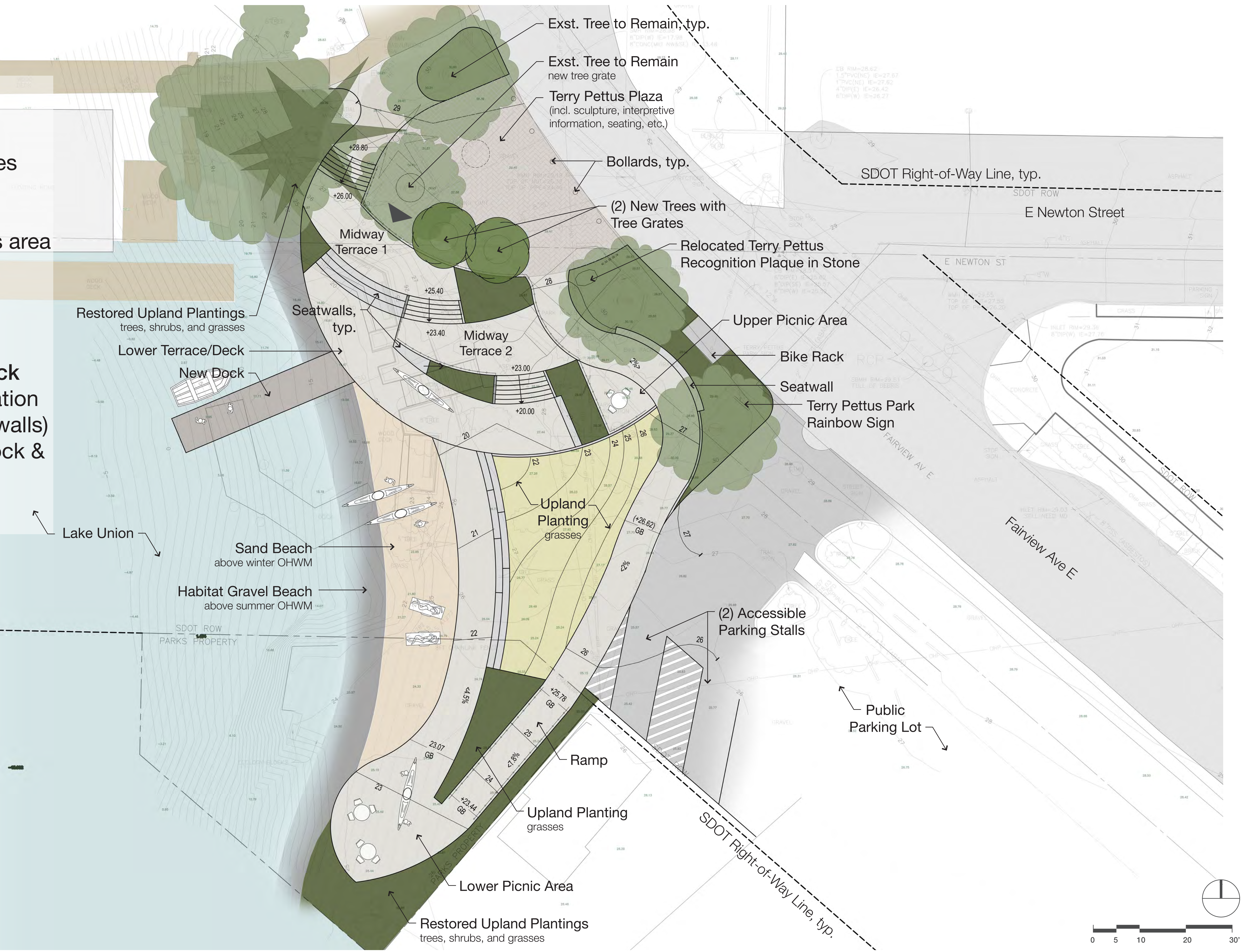
Concept: The Terraces

Key Features

- Large welcome plaza; could offer interpretive exhibits, art, etc.
- Multiple levels of terraces, improves sight lines across site and creates varied views
- No lawn; large native upland grass area
- ADA parking at South
- No designated standard parking/loading

Responding to Community Feedback

- Generous upland shoreline restoration
- Ample seating opportunities (seatwalls)
- Varied small boat launch areas (dock & beach)
- Improved visibility & security



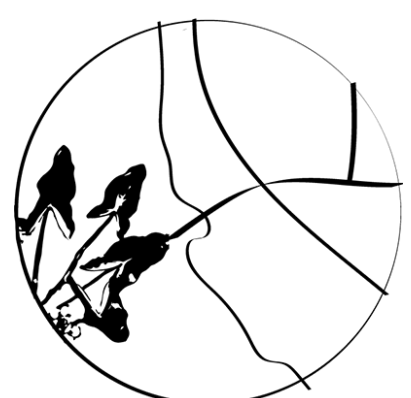
Concept: The Cove

Key Features

- All visitors share same experience
- Dock at south end; orientation creates calm water area on east side
- Extensive beach
- Minimum trees removed (4); potential for relocation on site or within SPR
- ADA parking at North
- No designated standard parking/loading

Responding to Community Feedback

- Moderate upland shoreline restoration
- Ample seating opportunities (seatwalls)
- Varied small boat launch areas (dock & beach)



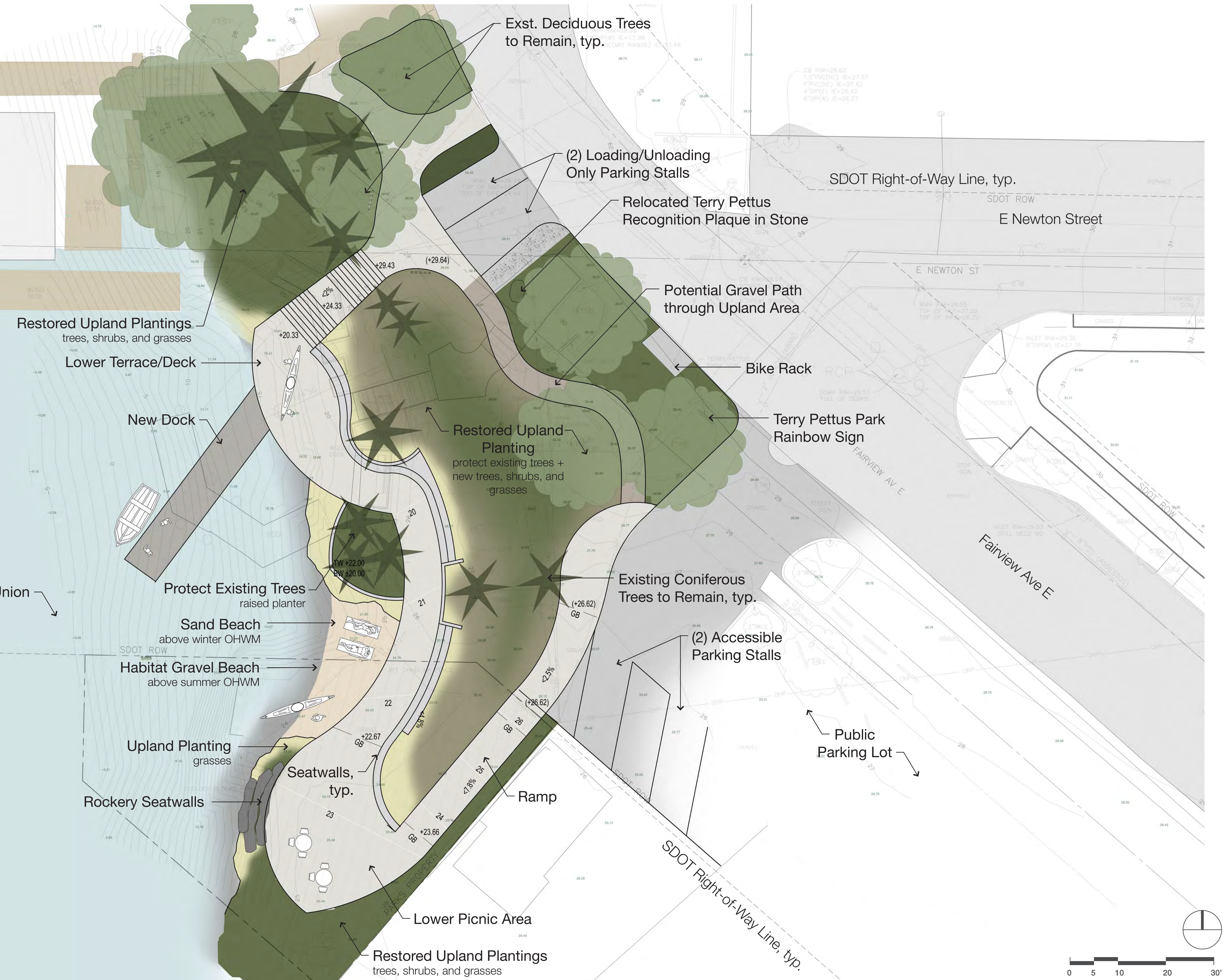
Concept: The Restoration

Key Features

- Expansive restored habitat areas
- Dock at north end; orientation creates calm water area on east side
- Small beach
- Maximum trees retained, as feasible
- Optional gravel path through restored upland
- ADA parking at South
- Two (2) designated standard parking/loading stalls at North

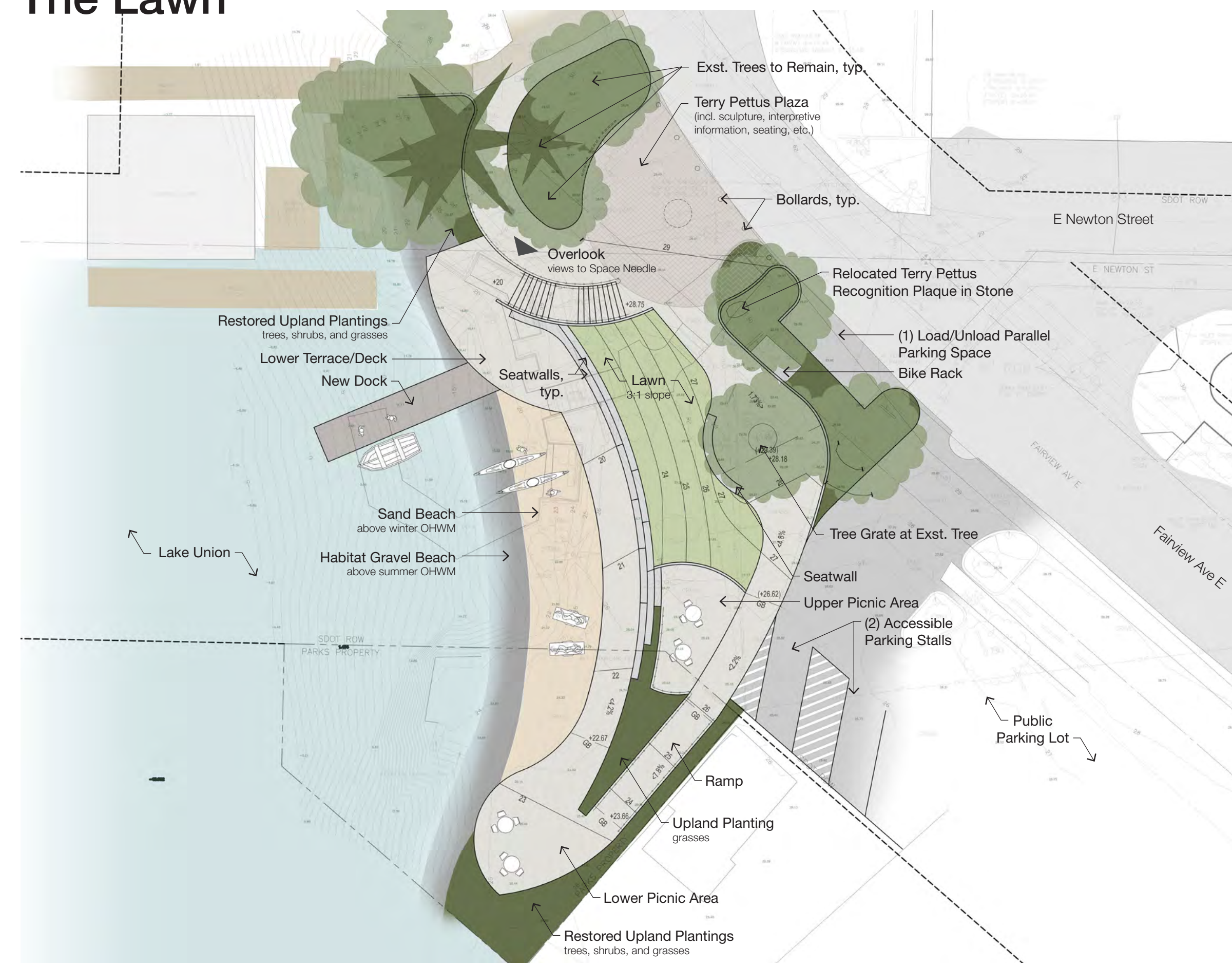
Responding to Community Feedback

- Expansive upland shoreline restoration
- Ample seating opportunities (seatwalls, picnic area, rockery seatwalls)
- Varied small boat launch areas (dock & beach)



Concept Comparison

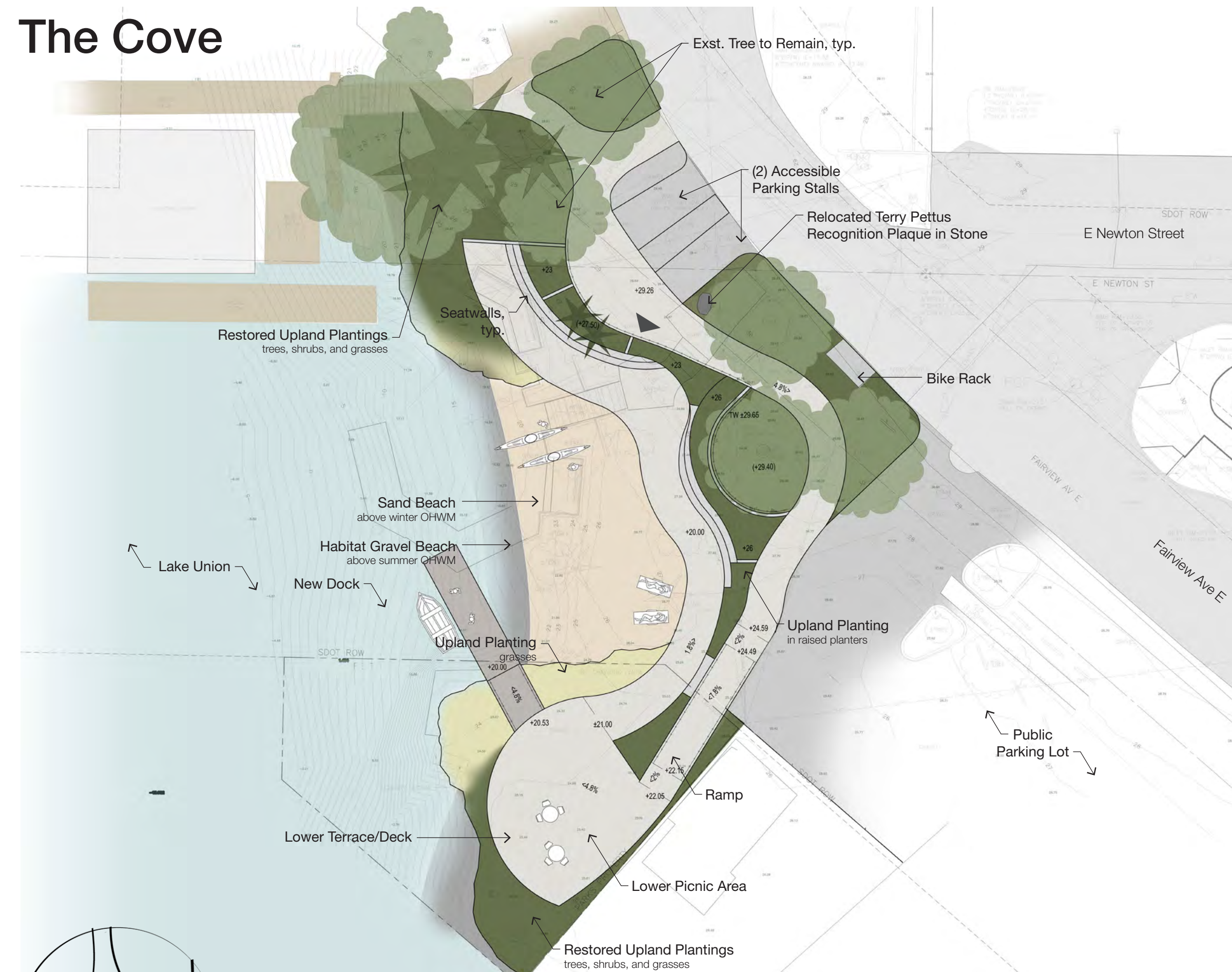
The Lawn



The Terraces



The Cove

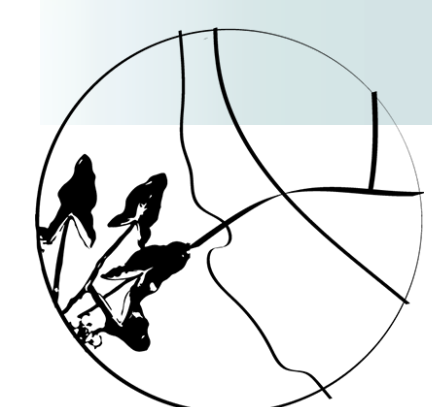


The Restoration



Summary of Feedback

- Prefer a mix of The Restoration and The Terraces options
- Need to maintain sightlines and sense of safety (one of the only Lake Union east shore public waterfronts with a view to the space needle)
- Concern that hand-carry launch areas will compete with lounging areas
- Southern dock orientation preferred for water calming and house boat privacy
- Landscape buffer between park and house boat neighborhood preferred
- Need for distinction between park vs. private resources (i.e. garbage cans)
- Consensus that parking along Fairview Ave blocks views, but concern about loss of Zone 8 parking (we have heard that the existing parking is non-conforming to SDOT standards)
- Desire for small watercraft storage on-site (i.e. stand-up paddle boards)
- Desire and need for universal access
- Desire for shoreline restoration and habitat creation
- Desire for link to Cheshiahud Trail
- Desire to maintain sense of a neighborhood parklet



Plant Palette

Groundcover



Vanilla Leaf
Achlys triphylla



Common Camas
Camassia quamash



Kelsey's Dwarf Red-osier Dogwood
Cornus stolonifera "Kelsey"



False Lily-of-the-Valley
Maianthemum dilatatum

Herbaceous Plants



Tufted Hairgrass
Deschampsia cespitosa



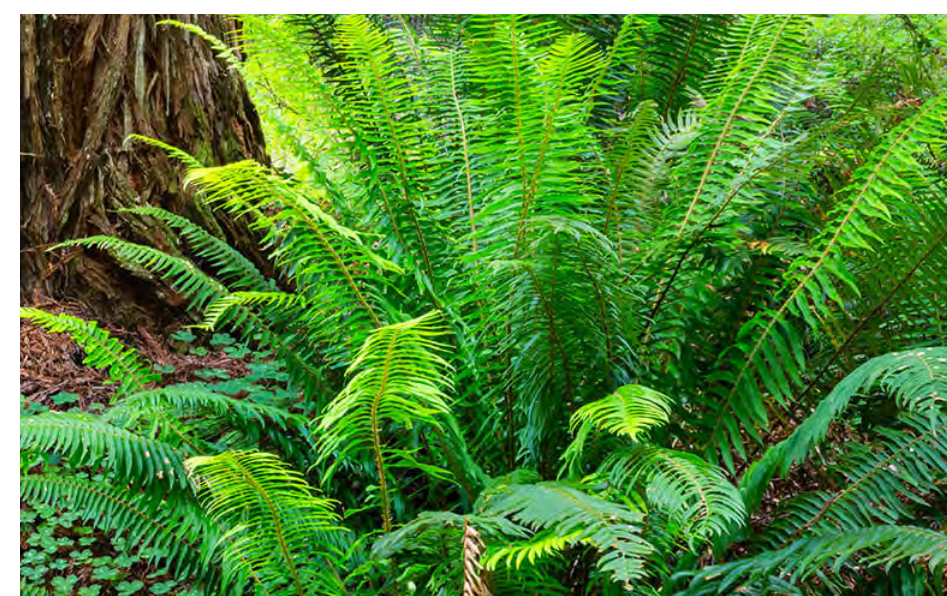
Tall Manna Grass
Glyceria elata



Douglas' aster
Aster subspicatus



Goldenrod
Solidago canadensis

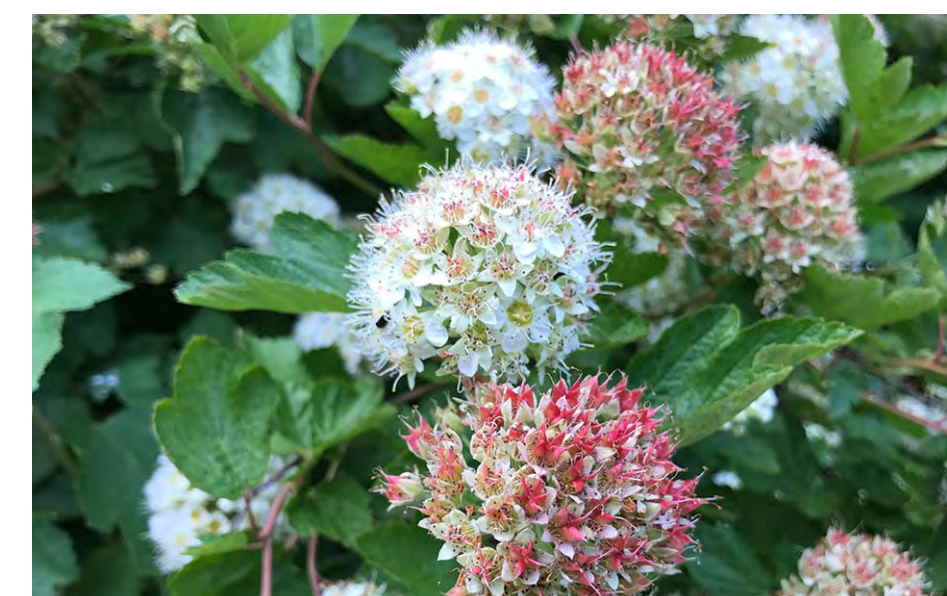


Sword Fern
Polystichum munitum

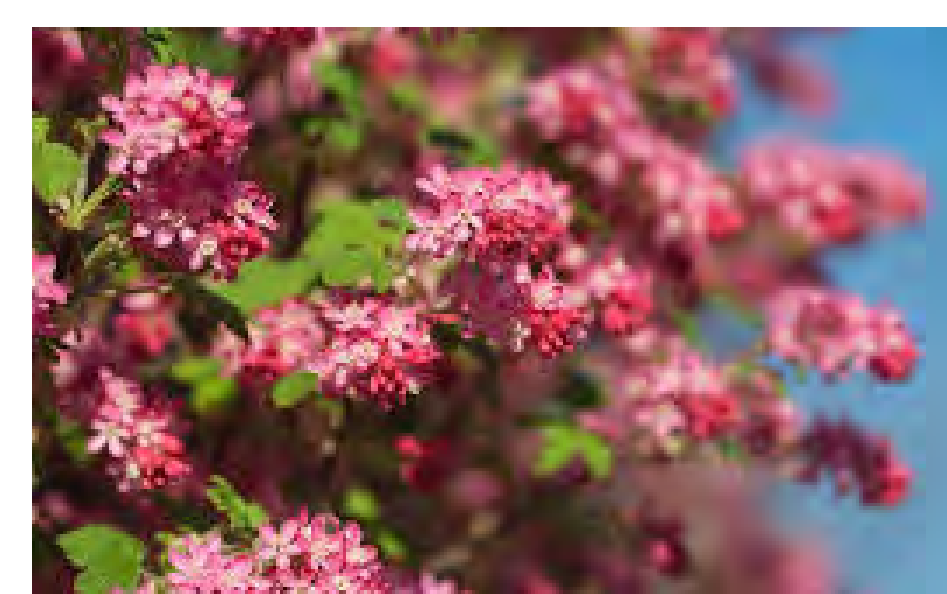
Shrubs



Salal
Gaultheria shallon



Pacific Ninebark
Physocarpus capitatus



Red-flowering Currant
Ribes sanguineum



Subalpine spirea
Spirea densiflora



Hardhack
Spirea douglasii

Trees



Vine Maple
Acer circinatum



Garry Oak
Quercus garryana



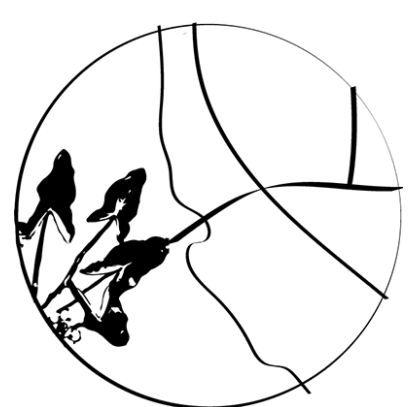
Shore Pine
Pinus contorta

Other Trees, tbd

Cascara
Rhamnus purshiana

Willow
Salix spp.

Emergent Plants, tbd



Site Materials

Ground Surfacing



Concrete Paving

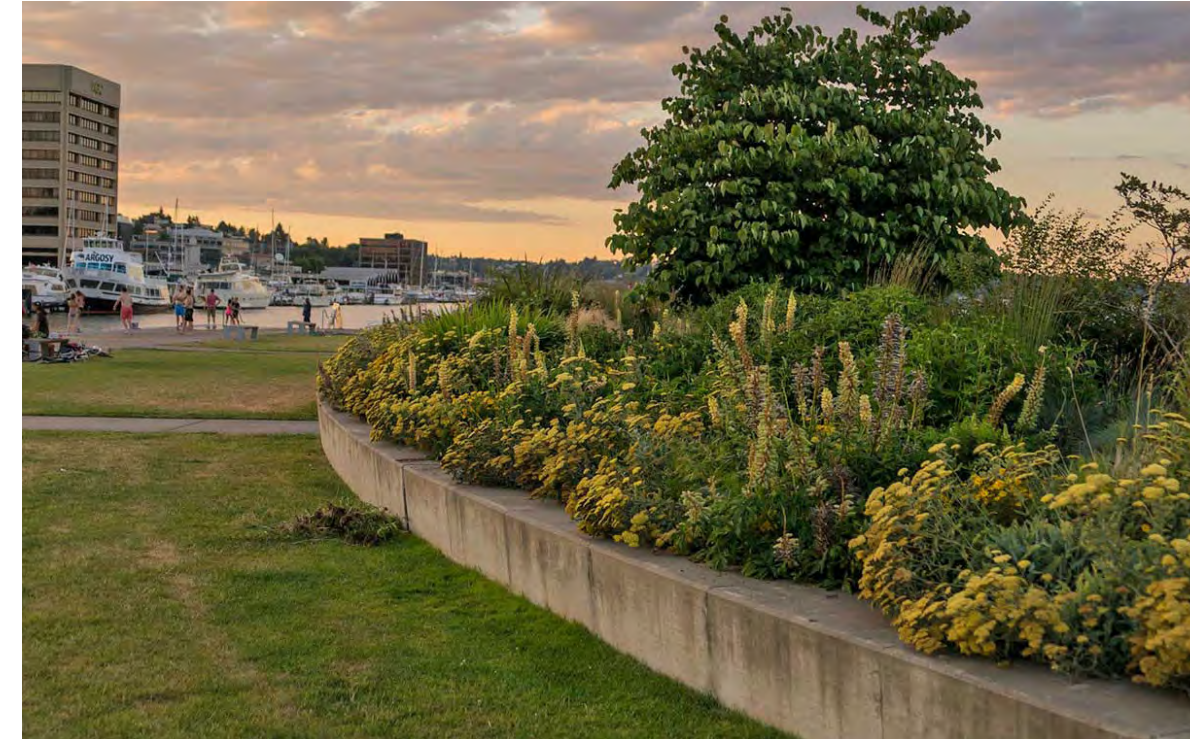


Permeable Paving



Light-penetrating Dock

Seating



Concrete Seatwall



Stone/Boulder Bench



Concrete & Wood Bench



Gabion with Bench



Concrete & Wood Bench

Retaining Walls



Concrete - Continuous Wall



Gabion

Bollards (at Upper Plaza)



Round



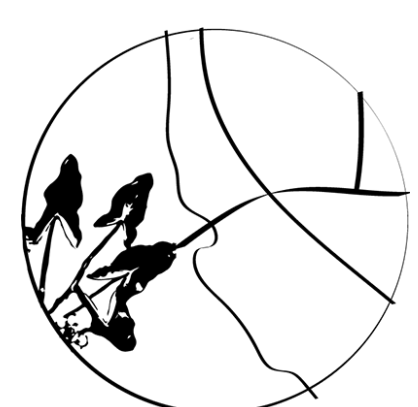
Boulder/Natural



Maritime



Detail



Next Steps

SPR-Initiated Online Survey



Reviewed Survey Results, Developed Design Intent & Guiding Principles



Coordinate with Agencies (ongoing)



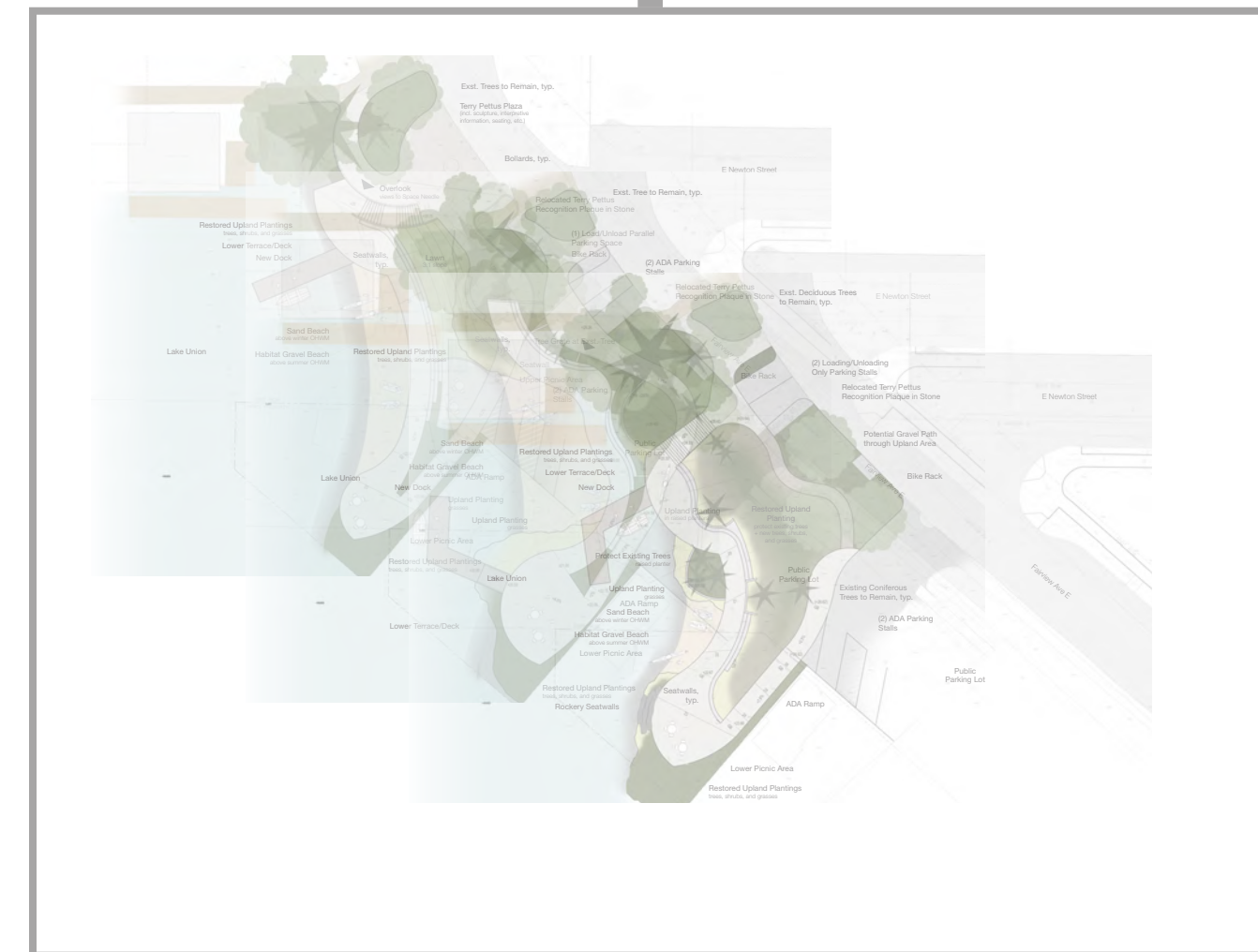
Schematic Design (under development)



Feasibility Study by Anchor QEA

JONES JONES
ARCHITECTS
LANDSCAPE ARCHITECTS
PLANNERS

Design Team Selected



Developed four (4) concept options; presented to ProView and to Public; collected feedback

- Proview Presentation #2 (Virtual, September 8)
- Public Meeting #2 (Virtual, September 23, 4pm)
- Design Refinement
- Design Commission #2 (October 2020)



Terry Pettus Park Renovation
Design Commission Meeting #1 - September 17, 2020