

# Terry Pettus Park Renovation

**Jenny A. Durkan**  
Mayor

**Samuel Assefa**  
Director, OPCD

**Brianna Holan**, Chair

**Justin Clark**, Vice Chair

**Elizabeth Conner**

**Azzurra Cox**

**Mark Johnson**

**Rick Krochalis**

**Amalia Leighton**

**Vinita Sidhu**

**Lucas Whitesell**

**Elaine Wine**

**Michael Jenkins**  
Director

**Valerie Kinast**  
Strategic Advisor

**Aaron Hursey**  
Planner

**Juliet Acevedo**  
Administrative Staff

**Office of Planning and  
Community Development**  
**Seattle City Hall**  
600 4th Avenue, 5th Floor  
Seattle, WA 98124

**TEL** 206-684-0435  
**FAX** 206-233-2784  
seattle.gov/designcommission

## Commissioners Present

Brianna Holan, Chair  
Justin Clark, Vice Chair  
Elizabeth Conner  
Azzurra Cox  
Mark Johnson  
Rick Krochalis  
Amalia Leighton  
Vinita Sidhu  
Lucas Whitesell  
Elaine Wine

## Commissioners Excused

## Project Description

Originally constructed in 1971, Terry Pettus Park is a street-end pocket park located along the eastern shore of Lake Union in the Eastlake Neighborhood. The purpose of the project is to renovate the existing park as well as to increase the park size through the acquisition and development of an adjacent property located southwest of the existing park. The goals of the renovation are to maintain waterfront recreational access, increase durability of park materials, improve accessibility, improve access from adjacent trails and pathways, and to provide shoreline restoration. The project is funded through the Seattle Parks District and currently includes \$1,576,000 for the planning, development, and construction of the park.

## Meeting Summary

This was the Seattle Design Commission's (SDC) first review of the Terry Pettus Park Renovation Project. The purpose of this meeting was to review the concept design phase (30% design) for the project. The SDC voted, 9-1, to approve the concept design for the Terry Pettus Park Renovation project with several conditions and recommendations.

## Recusals and Disclosures

None

**September 17, 2020**

9:00 - 10:30 am

**Project Type**

CIP

**Phase**

Concept Design (30% design)

**Previous Reviews**

None

**Presenters**

Duane Dietz

Jones &amp; Jones

Janelle Lotzgesell

Jones &amp; Jones

Toby Ressler

SPR

**Attendees**

Omar Akkari

SDOT

Alee Allen

Eastlake Resident

Amin Amos

Meeting Attendee

Kathleen Conner

SPR

Petra Ecclestone

Meeting Attendee

Joy Jacobson

FAS

Rick Johnson

SPU

Chris Leman

Eastlake Resident

Michael Taylor

Meeting Attendee

Rob Widmeyer

Eastlake Resident

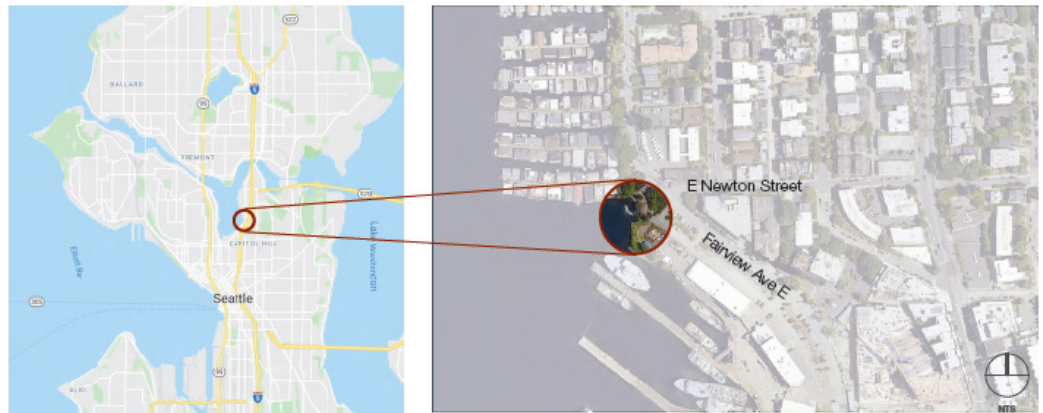


Figure 1: Project location

**Summary of Presentation**

Toby Ressler, SPR, and Janelle Lotzgesell and Duane Dietz, Jones & Jones, presented the concept design for the Terry Pettus Park Redevelopment Project. The team began by providing a brief update on the overall project scope, budget, and schedule. The team then discussed the history of the park as well as the legacy of Terry Pettus, whom the park is named after. The project team is coordinating with several City departments as well as the Army Corp of Engineers to develop and approve a proposed design concept.

The existing park, which is located at a shoreline street end along the eastern edge of Lake Union (see figure 1), has aged over the past four decades and includes overgrown vegetation as well as hardscape and decking materials that have exceeded their life span (see figure 2). The project team then discussed their proposal alternatives for the redevelopment of the park. The intent of the park redevelopment is to enhance the existing park to provide universal access, improve site materials, increase water access, and to provide habitat restoration, which is reflected in each of the design alternatives. The team presented four design concept alternatives – The Lawn, The Terraces, The Cove, and The Restoration (see figure 3). Each concept included a mix of programming and design elements such as ADA accessible pathways, new overwater dock, restored upland plantings, water and sand beach access, seating, and gathering space. The team also provided concepts for the proposed planting and materials palette.

**Agency Comments****None****Public Comments**

**Chris Leman**, Eastlake resident, mentioned that the community had identified Fairview Ave as a neighborhood green street, which is documented in the updated Eastlake Neighborhood Plan. Chris then stated that although the street is identified in the neighborhood plan, it has not been officially designated by SDOT. Chris is concerned that without the official designation as a green street, this portion of Fairview Ave will be designed using street standards that do not reflect standards for a neighborhood green street. Chris requested additional information as to when the street will receive its designation as a neighborhood green street so that the appropriate design standards could apply. Chris then provided comment about previous osprey nest platforms located adjacent to the park site. Chris stated that osprey had previously nested adjacent to the site and, although remaining in the area, they have not found another nesting site. Chris was happy to know that the project team is discussing the possibility of providing nesting on site.

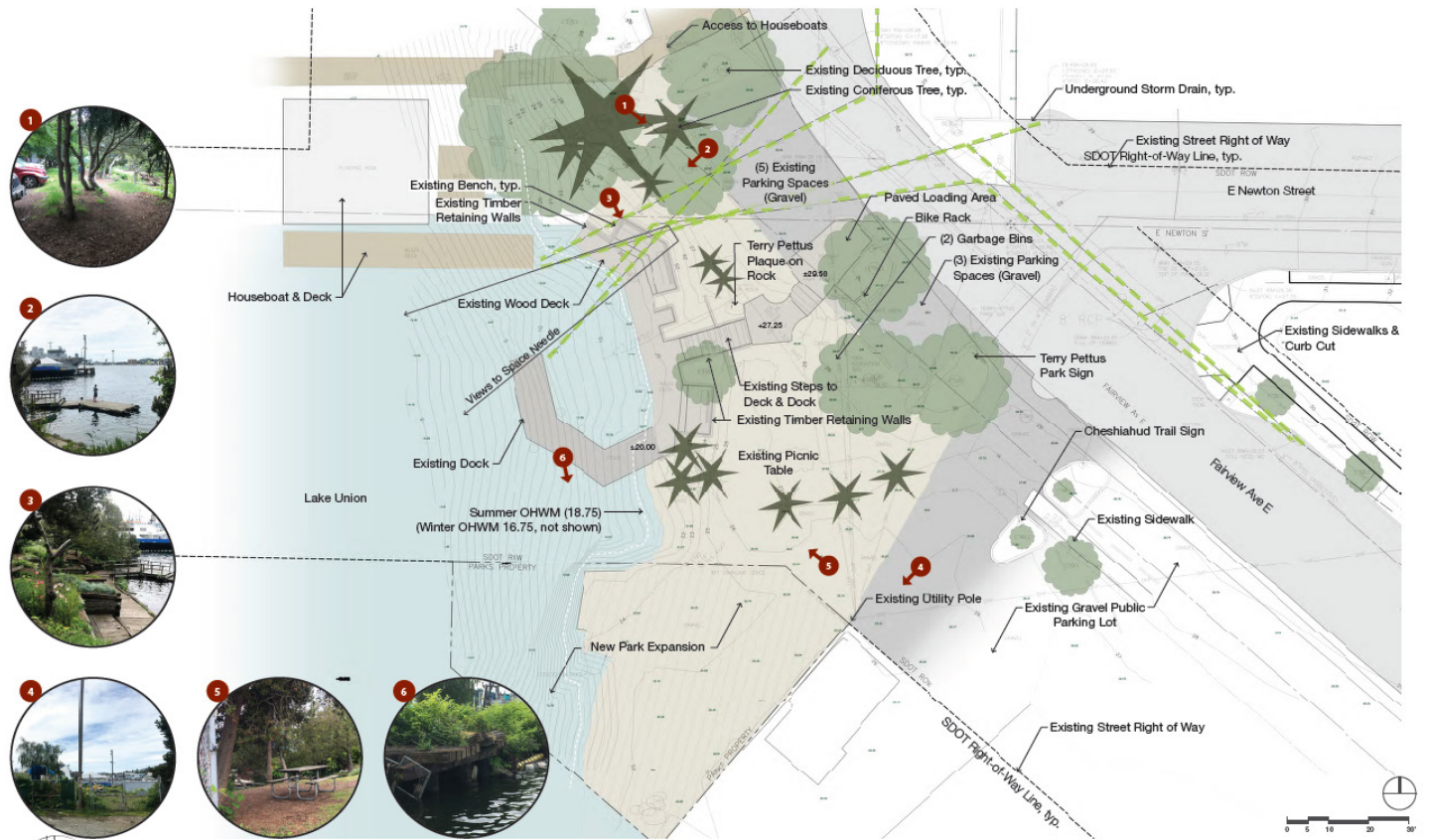
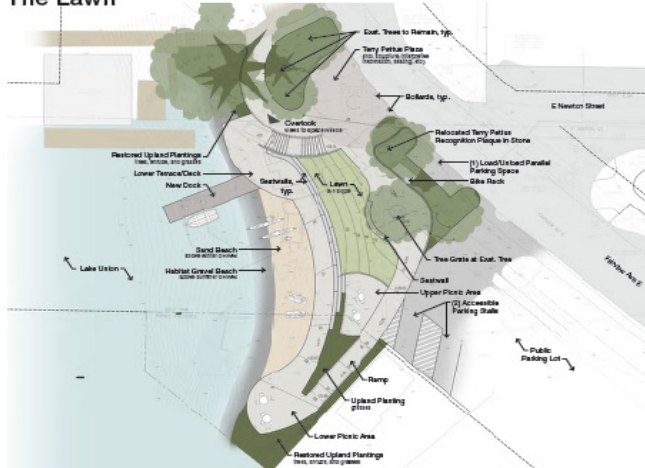


Figure 2: Existing park conditions

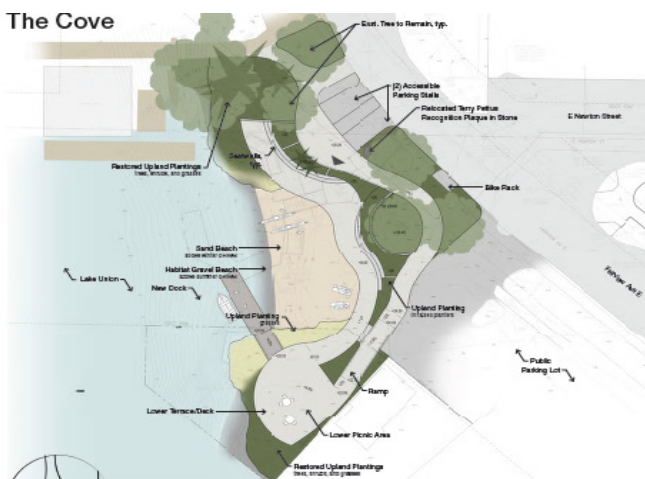
The Lawn



The Terraces



The Cove



The Restoration

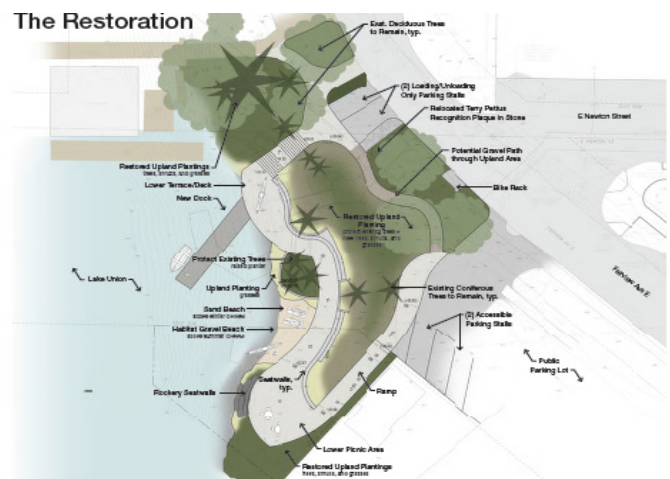


Figure 3: Proposed design concept alternatives

**Alee Allen**, Eastlake resident, expressed concern over the lack of parking for both neighborhood residents and park users, but was glad to hear the project team is looking at how the project will impact parking. Alee then mentioned that the adjacent houseboat community continues to experience park users attempting to use houseboat common facilities, such as garbage bins, as well as the houseboat dock. Alee requested additional information as to how the park will interact with the adjacent houseboat dock and how the team will provide adequate park facilities so that park users do not have to use the private facilities on the houseboat dock.

### Summary of Discussion

The Commission organized its discussion around the following issues:

- Design response to public engagement and equity priorities
- Design response to site conditions and adjacencies
- Circulation and access (water & ADA access)
- Sustainability and habitat restoration
- Materials and planting

#### *Design response – public engagement and equity priorities*

The SDC discussed issues around anticipated park use, public engagement process, and race and social justice representation. Due to its location along Lake Union and adjacency to the Cheshiahud Loop Trail, The Commission acknowledged the park will attract many users from outside the Eastlake Community. The Commission strongly encouraged the project team to consider this park as a part of a larger park system and to consider how it will connect with other open spaces and trails. The SDC then recommended the project include additional amenities, such as a water fountain, to better serve additional user groups.

The SDC cautioned the project team from using the term Race & Social Justice as part of their community engagement if the information does not directly connect to issues around race. The Commission then acknowledged the limitations due to the current pandemic but encouraged the project team to broaden their outreach approach to include a variety of user groups. Commissioners encouraged the project team to consider additional outreach opportunities outside of using online platforms, such as through additional outreach at the project site.

The Commission also acknowledged Terry Pettus's (the park's namesake) commitment to advocating for increased access to nature and water for the greater Seattle community. Commissioners encouraged the project team to promote the concept of access to nature and water as the design continues to develop.

#### *Design response – site conditions and adjacencies*

The SDC appreciated the project teams' approach to the overall design of the park. Specifically, commissioners commended the project team's approach to improving water access and seating opportunities throughout the site. The Commission recommended the project team explore additional design options for the use of vegetation to buffer the southern portion of the project site. Commissioners agreed that, due to its location within an industrial area, the project could provide an interesting comparison between the park and the neighboring industrial business. Commissioners encouraged the project team to not fully buffer the project site from the adjacent industrial property, but to create a design that will best integrate the park within the surrounding area.

Several commissioners then expressed their concern with the project team not presenting a hybrid concept design to better show how they intend to provide specific programming and design elements.

#### *Circulation and access (water and ADA access)*

While the SDC commended the project team for their approach to providing water access and preserving views through the project site, Commissioners expressed concern with the limited information provided about site access and circulation. The Commission then conditioned that the project team provide information and diagrams to show overall site access as well as ADA accessible pathways and areas during the next review. Commissioners also recommended the team provide additional information on loading areas, for uses such as kayak drop off, and ADA parking access. The Commission also recommended the project team to better address ADA access by expanding habitat restoration opportunities to the middle terrace of the "the terraces" design alternative, which is currently not designed as an accessible space for all park users.

The SDC was also concerned with the limited information about the project site, surrounding neighborhood context and overall parking strategy. The Commission requested the project team provide a clearly defined project site as well as information on how the project site is integrated within the surrounding project area, including its connection to amenities such as the Cheshiahud Loop Trail. Commissioners agreed that while the park design should be respectful of surrounding neighbors, it shouldn't negatively impact or ignore public access to address those concerns and encouraged the project team to focus on providing improvements within the site boundary as well as within the adjacent street ROW. Commissioners recognized that while site access is important, the project team should not attempt to solve all the neighborhoods parking issues. Commissioners then encouraged the team to provide a parking strategy that will best address issues immediately surrounding the park site.

After they discussed issues related to site access and circulation, the SDC conditioned that the project team provide more information on the project boundaries as well as how the project is integrated within the surrounding context and connected to adjacent uses such as the Cheshiahud Loop Trail. The Commission also conditioned that team provide additional information on a proposed parking strategy. Information should be provided during the next review.

The SDC then recommended the project team provide a clear rationale for the location and orientation of the dock. Commissioners acknowledged that the dock will serve as an important programming element for the park and requested the project team explain how users will see and access the dock from both the street as well as from Lake Union.

#### *Sustainability and habitat restoration*

The SDC appreciated the project's focus on habitat restoration as well as the use of native plantings. Commissioners are excited to see how this design will continue to develop.

#### *Materials, planting, and maintenance*

The SDC discussed the use of materials as well as the long-term maintenance plan for the project site. The Commission recommended the project team provide additional details as to how proposed materials will be applied to the design. The Commission then recommended the project team provide additional information about long-term maintenance as well as a plan for on site garbage collection. Commissioners also encouraged the project team to show where other utilities are located on site and adjacent to the project site.

#### **Action**

The Commission thanked the project team for their presentation of the concept design phase for the Terry Pettus Park Renovation Project. Overall, the Commission appreciated the project team's design approach for providing a space for water access, habitat restoration, and recreation. The SDC voted, 9-1, to approve the concept design phase for the Terry Pettus Park Renovation project with the following conditions to be addressed during the next project review:

1. Provide information and diagrams to show overall site access as well as the ADA accessible pathways and areas
2. Provide more information on the project boundaries as well as how the project is integrated within the surrounding context and connected to adjacent uses such as the Cheshiahud Loop Trail; provide additional information on a proposed parking strategy.

The SDC also provided the following recommendations that should be addressed prior to the next project review:

1. Consider providing amenities, such as a water fountain, to better reach additional user groups
2. Explore ways to buffer the park from south parcel that will better integrate the park within the surrounding urban context
3. Address ADA access by expanding habitat restoration opportunities to the middle terrace of the "the terraces" design alternative, which is currently not designed as an accessible space for all park users
4. Provide a clear rationale for dock location
5. Show how materials will apply to the site
6. Provide additional information about the long-term maintenance; provide a plan for on-site garbage collection

The following are statements from Commissioners who voted against the concept design phase for the Terry Pettus Park Renovation Project:

**Rick Krochalis:** Although the project team presented several concept alternatives, they should have presented a preferred design concept to better show where the project is heading. I cannot fully support the project without seeing a preferred design concept proposal.