

South Transfer Station Phase II

Seattle Design Commission – Concept Level
Oct 18, 2018

10/18/2018

Seattle Public Utilities



City of Seattle

Agenda

1. Project Re-Introduction
2. Project Goals, Scope and Design Parameters
3. Site Layout
4. User Experience
5. Architectural Concept
6. Sustainability Approach
7. Schedule



Project Goals

- Landfill closure is required by Dept. of Ecology.
 - Design criteria approved through Agreed Order
- Meeting regulatory landfill closure requirements
 - Cover system, surface water, landfill gas
- Cohesive site layout
- Efficient use of space
- Site access management (public and non- public areas)
- Perform mitigation that benefits community
- Minimize community impacts
- Minimize service interruption during construction



SPU Solid Waste Facility System



RSJI TOOLKIT AND SPU

- **Utility-wide:**
 - Tools embedded into asset management-Stage gate process
 - EJSE staff part of project “Core Team”
- **Project specific:**
 - Provide comparable services between north and south facilities
 - Met for a year with representative community stakeholder group
 - Focus on environmental benefits, access to free recycling and hazardous waste disposal, and operational efficiencies
 - Currently partnering with DON Community Liaisons to engage South Park’s Spanish- and Vietnamese-speaking communities and small businesses



Community Outreach Process

- Four meetings with project stakeholders
- Participation in community events to gain input on project elements
- Drop in sessions for residential and business neighbors
- Community outreach for public artwork conducted via Office of Arts & Culture



Community input

When asked "What do you like about the South Transfer Station architecture...?"

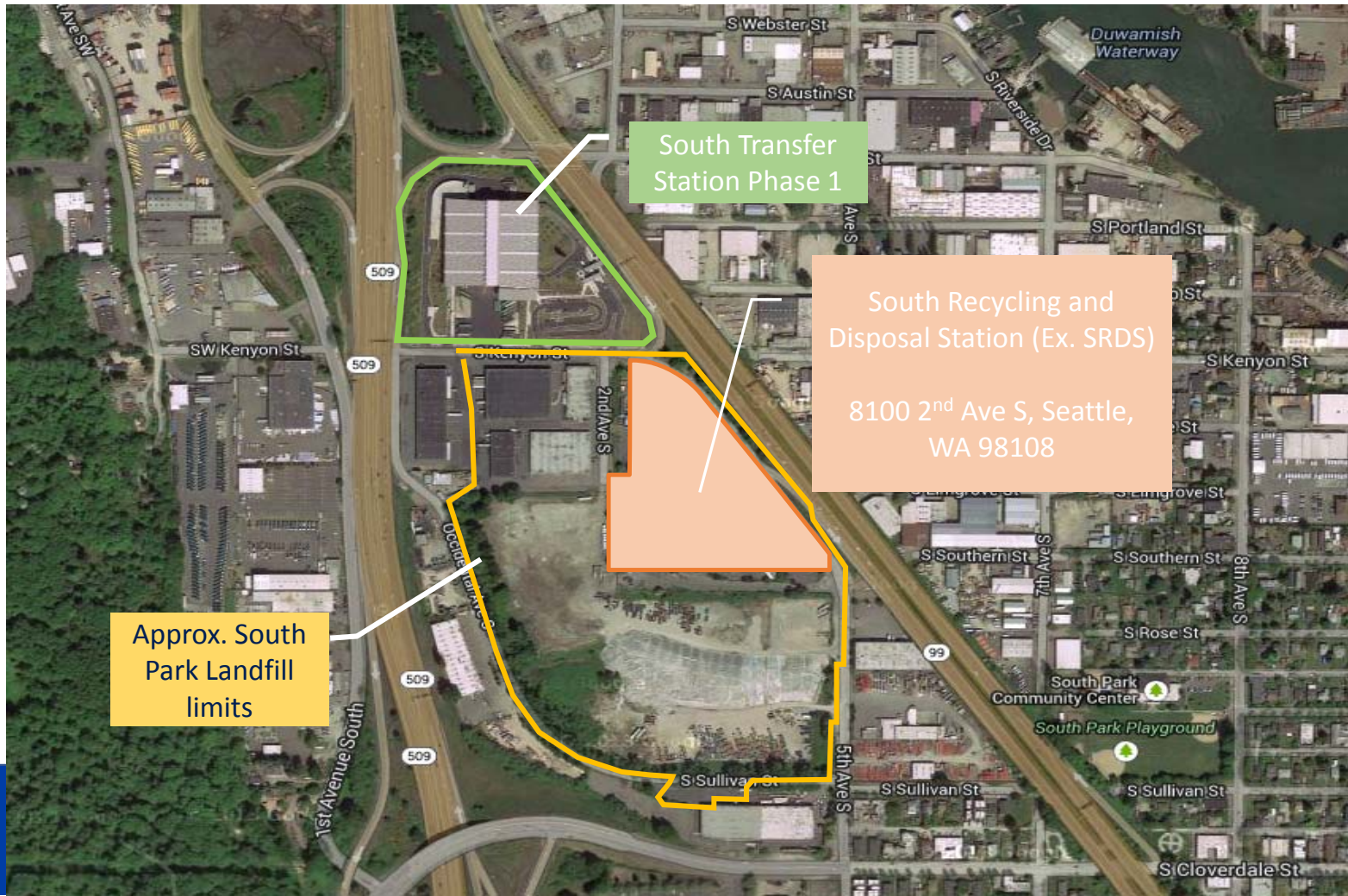
- Artwork
- Recycled pieces, "found art" wall
- View to tipping floor
- Use of daylight and diffused lighting is a success in this project
- Use of different materials (metal, concrete)
- Has a feeling of being grounded to site, connected to landscape
- Like the identification of the site at night using lighting



Design Parameters



Existing Conditions

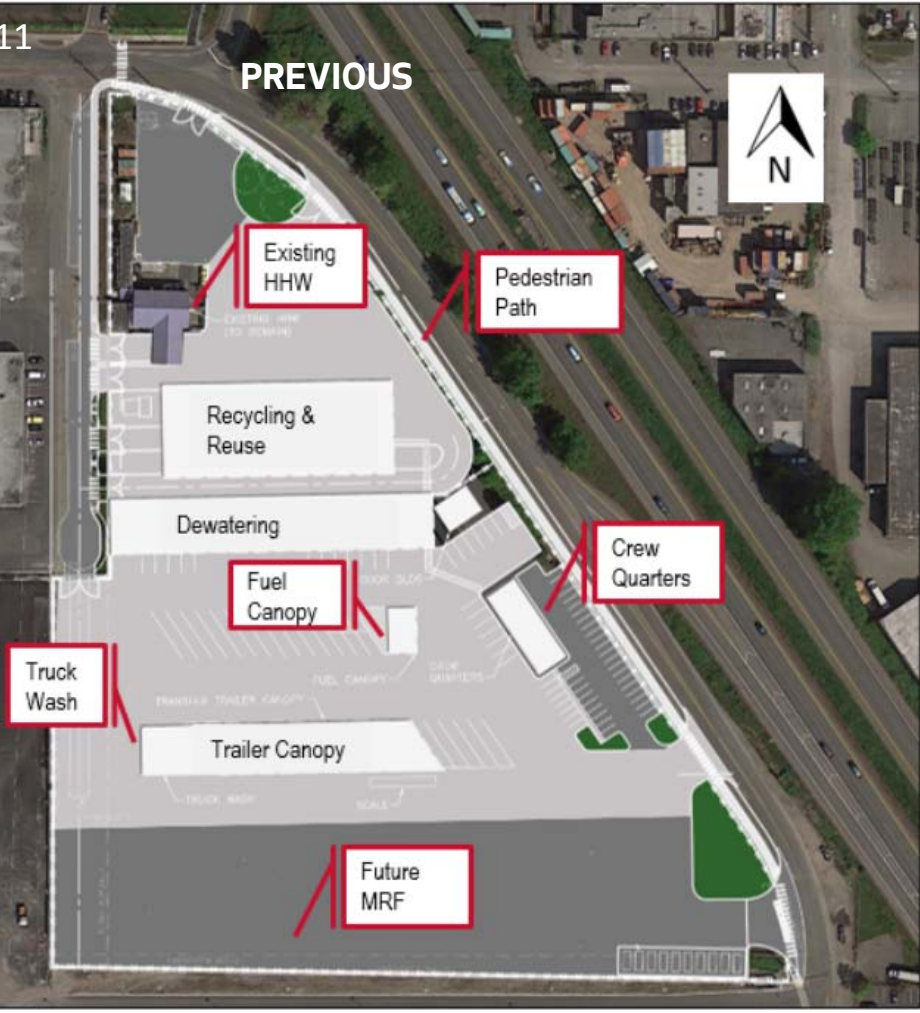


Project Scope and Design Parameters

- Limitations due to landfill (membrane cover system, limited soil depth, no infiltration)
- Separation of public and SPU-only areas
- Perimeter security fence
- Lighting (safety, security inside fence)
- Single-story buildings
- Connection with existing South Transfer Station Phase 1



PREVIOUS



CURRENT



Proposed Site Layout

Improved Tree Retention



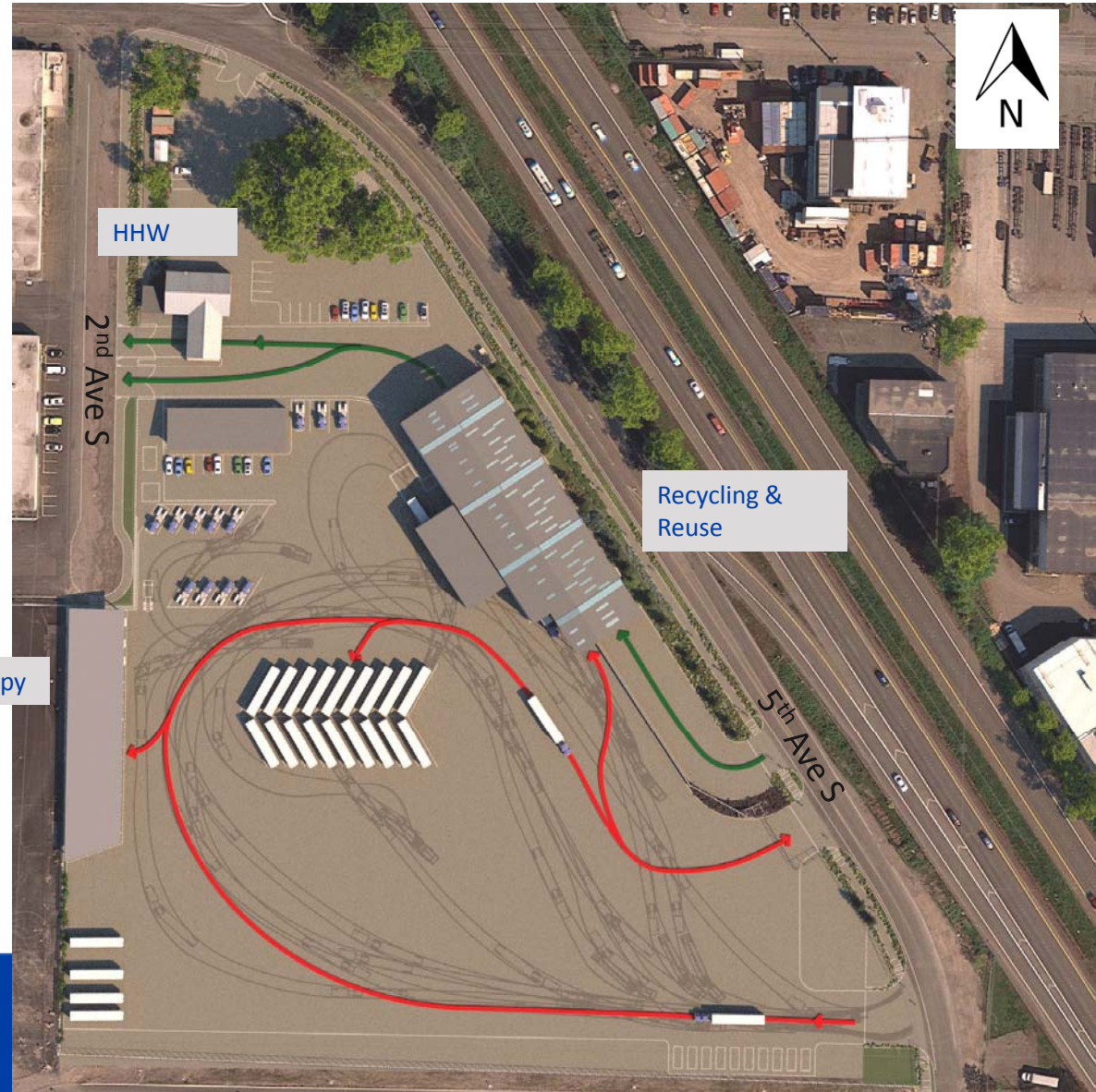
	To be removed
	Was previously to be removed, now retained
	Was originally to remain, no change

Site Circulation

Public Vehicles



Solid Waste Trucks



Transfer Station Functional Relationship

Customer
traffic



SPU truck
traffic



Facility Signage Concept

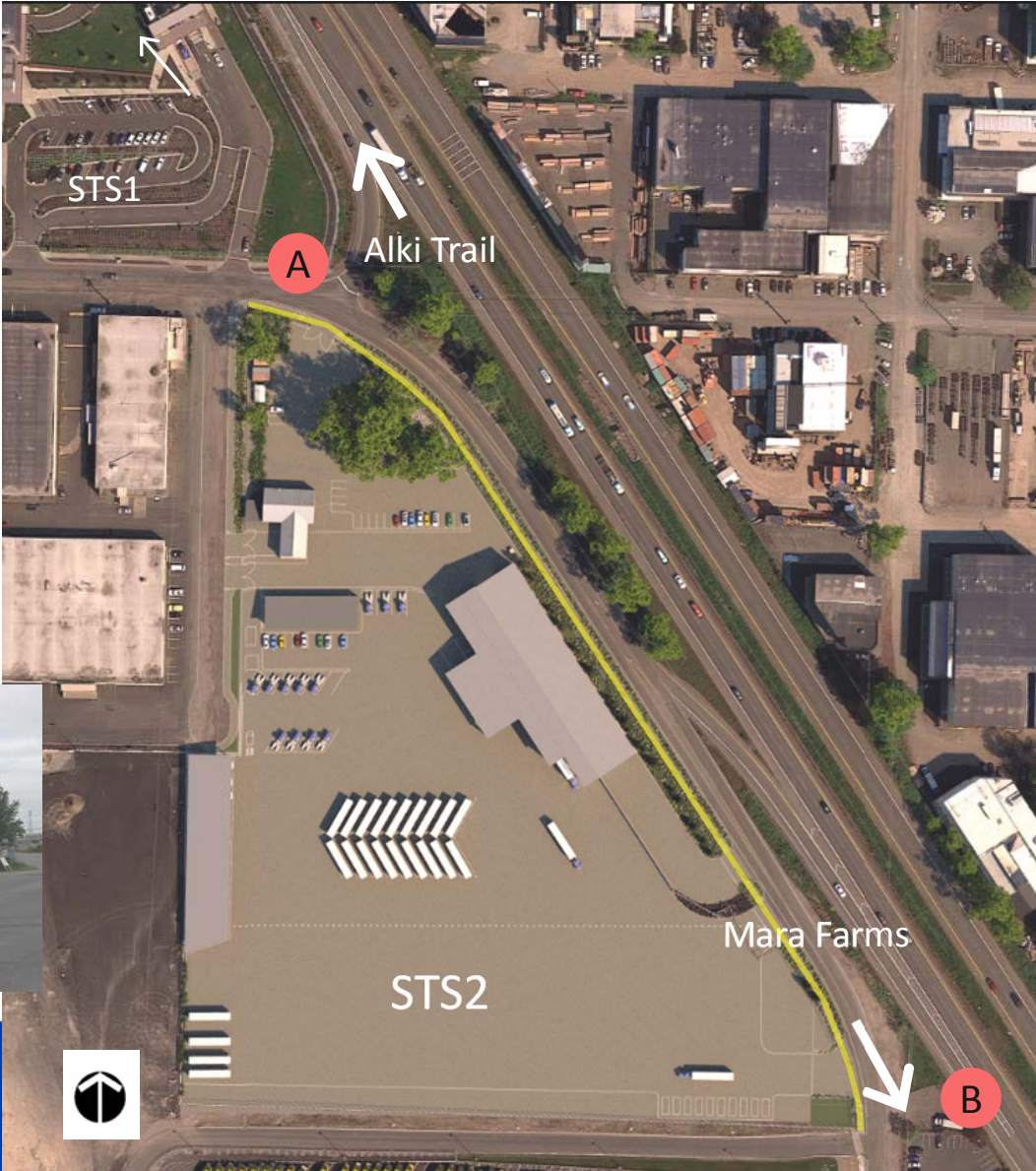


User Experience



Pedestrian Path

- Pedestrian users – walk to nearby bus stops
- Connect Mara Farms to Alki Trail (missing link)
- Connects to existing sidewalk from south and to STS Phase 1





KEY MAP



2ND AVE S: LOOKING SOUTH



EXISTING GROVE OF TREES



5TH AVE S: LOOKING SOUTH






5TH AVE S: LOOKING NORTH

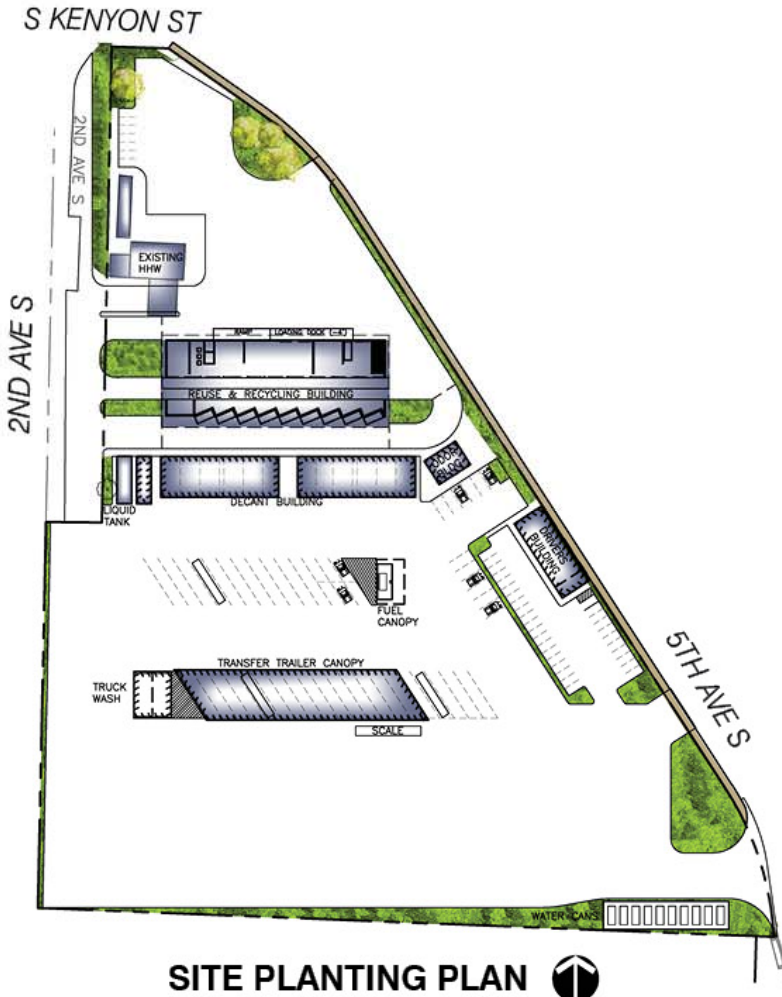
Initial Landscape Concept

Previous Design

- Pedestrian path with 2 rest/bench areas
- Non-permeable membrane caps the landfill
- 24" soil depth above cap
- Trees not allowed
- No irrigation possible
- Plants selected for low soil volume only
 - No trees or shrubs
 - Grass lawn
 - Sedges/rushes/perennials
- Ex. Grove of trees - 5 protected
- Consistency with phase 1 campus not possible

LEGEND

-  Existing trees to remain (6)
-  Low height planting
-  Pedestrian Trail









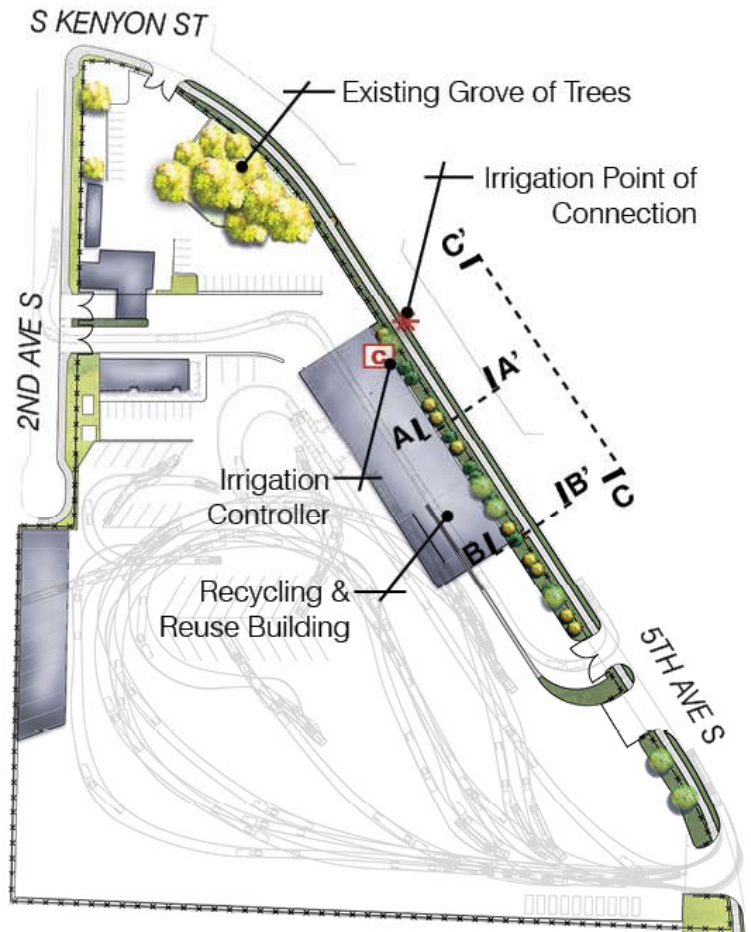
Updated Landscape Concept

Rethinking the Design

- Pedestrian path with 2 rest/bench areas
- Non-permeable membrane caps the landfill with the exception of the east side of site
- 24" soil depth above cap with the exception of the east side of site
- Trees allowed along 5th Ave S
- Irrigation possible along 5th Ave S
- Plant selection
 - 21 trees provided with low shrubs
 - Trees selected for phytoremediation qualities
 - Plants consistent with STS Phase 1
 - Sedges/rushes
- Ex. Grove of trees - 11 protected
- Consistency with phase 1 campus possible

LEGEND

-  Existing Trees to Remain (13)
-  Proposed Trees in Phytoremediation Tree Row (21)
-  Proposed Amenity Planting (Irrigated)
-  Eco-Lawn Seed Mix (Not Irrigated)
-  Gabion Benches (2)
-  Pedestrian Trail



SITE PLANTING PLAN 



Cohesive Campus: Existing STS Ph. 1 Photos

18 October 2018



Cohesive Campus: Plant Palette

18 October 2018



CORNUS SERICEA 'KELSEY' /
RED-OSIER DOGWOOD

2.5' HT X 2.5' W



PRUNUS LAUROCERSUS 'MT. VERNON' /
MT VERNON LAUREL

1' HT X 3' W



JUNCUS PATENS 'ELK BLUE' /
ELK BLUE RUSH

1.5' HT X 1.5' W



SALIX PURPUREA 'CANYON BLUE' /
DWARF BLUE ARCTIC WILLOW

4' HT X 3' W

Cohesive Campus: Plant Palette

18 October 2018



LAVANDULA ANGUSTIFOLIA /
ENGLISH LAVENDER

1.5' HT X 2' W



TAXUS X MEDIA 'DENSIFORMIS' /
CREEPING YEW

3' HT X 5' W



POTENTILLA FRUTICOSA 'GOLD STAR' /
GOLD STAR POTENTILLA

2' HT X 3' W



ECO-LAWN SEED (SDOT SEED MIX #5)



EUONYMUS ALATUS
BURNING BUSH

10' HT X 10' W

Existing Grove: Preserved as is

18 October 2018



5th Ave S Tree Row

18 October 2018



Pinus flexilis 'Vanderwolf's Pyramid' /
Limber Pine

- Pine trees can remediate chlorinated solvents
- 20' – 25' mature height; 10' – 13' mature spread (in constrained soil conditions)
- Drought tolerant when established
- Listed as a 2017 tree for Seattle on City of Seattle website
- Excellent pest and disease resistance
- Roots are tolerant of restrictive soil volumes

5th Ave S Tree Row

18 October 2018



Pinus heldreichii var. *leucodermis* /
Bosnian Pine

- Pine trees can remediate chlorinated solvents
- 30' – 35' mature height; 10' – 13' mature spread (in constrained soil conditions)
- Dense, pyramidal tree that makes an excellent accent or windbreak
- Tough, versatile, tolerant of a wide variety of growing conditions
- No major insect or disease problems

5th Ave S Tree Row

18 October 2018



Liquidambar styraciflua 'Clydesform' /
Emerald Sentinel® Sweetgum

- Sweetgum trees can remediate chlorinated solvents
- Ideal for busy streets and poor air quality areas
- 30' – 35' mature height; 10' – 15' mature spread (in constrained soil conditions)
- Drought-tolerant when established
- Excellent red fall color and persistent leaves

5th Ave S Tree Row

18 October 2018

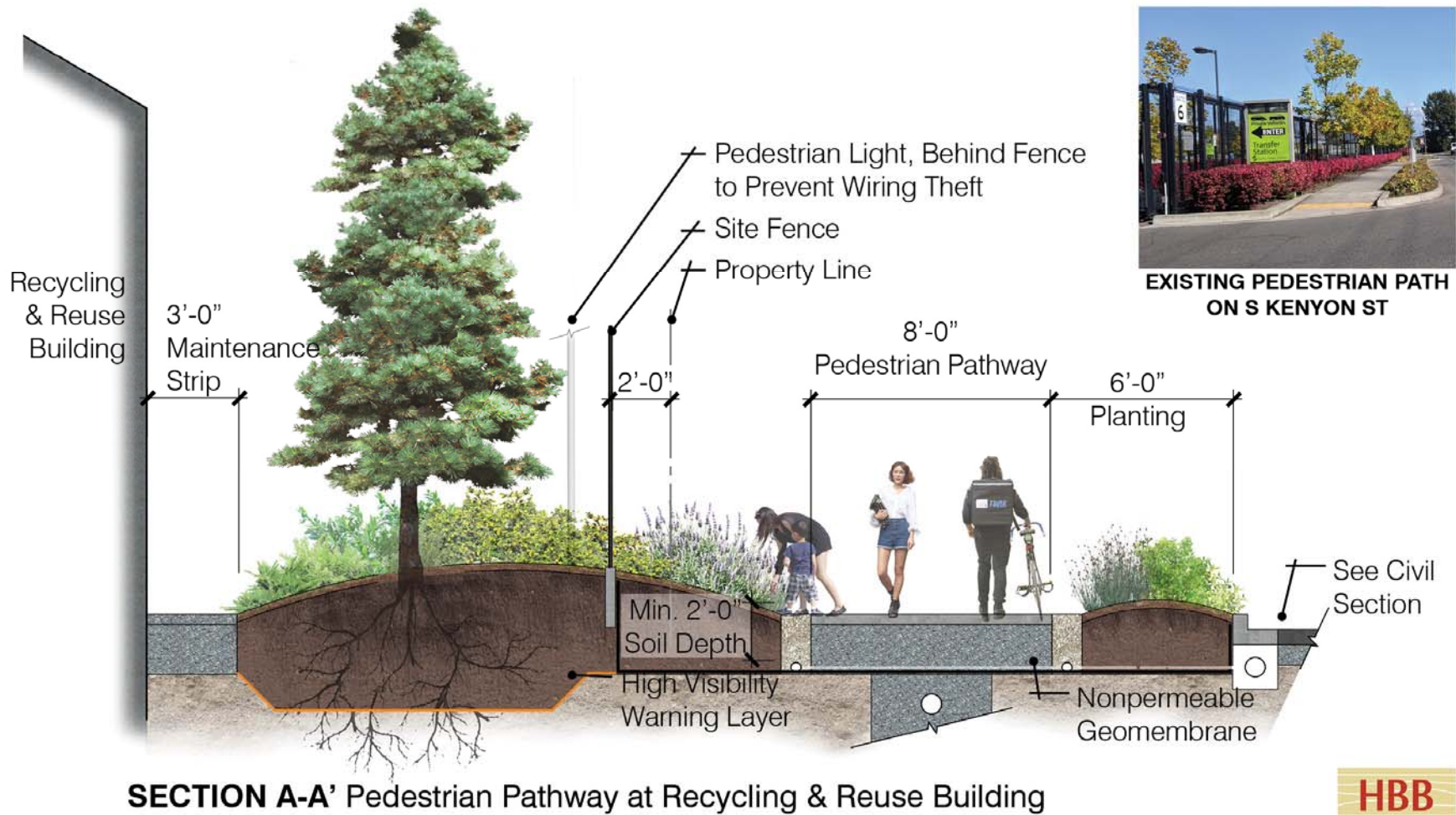


Platanus occidentalis /
Sycamore

- Sycamore trees can remediate chlorinated solvents
- 45' – 65' mature height; 35' – 60' mature spread (in constrained soil conditions)
- Drought tolerant when established
- Listed as a 2017 tree for Seattle on City of Seattle website
- Tolerant of urban pollutants

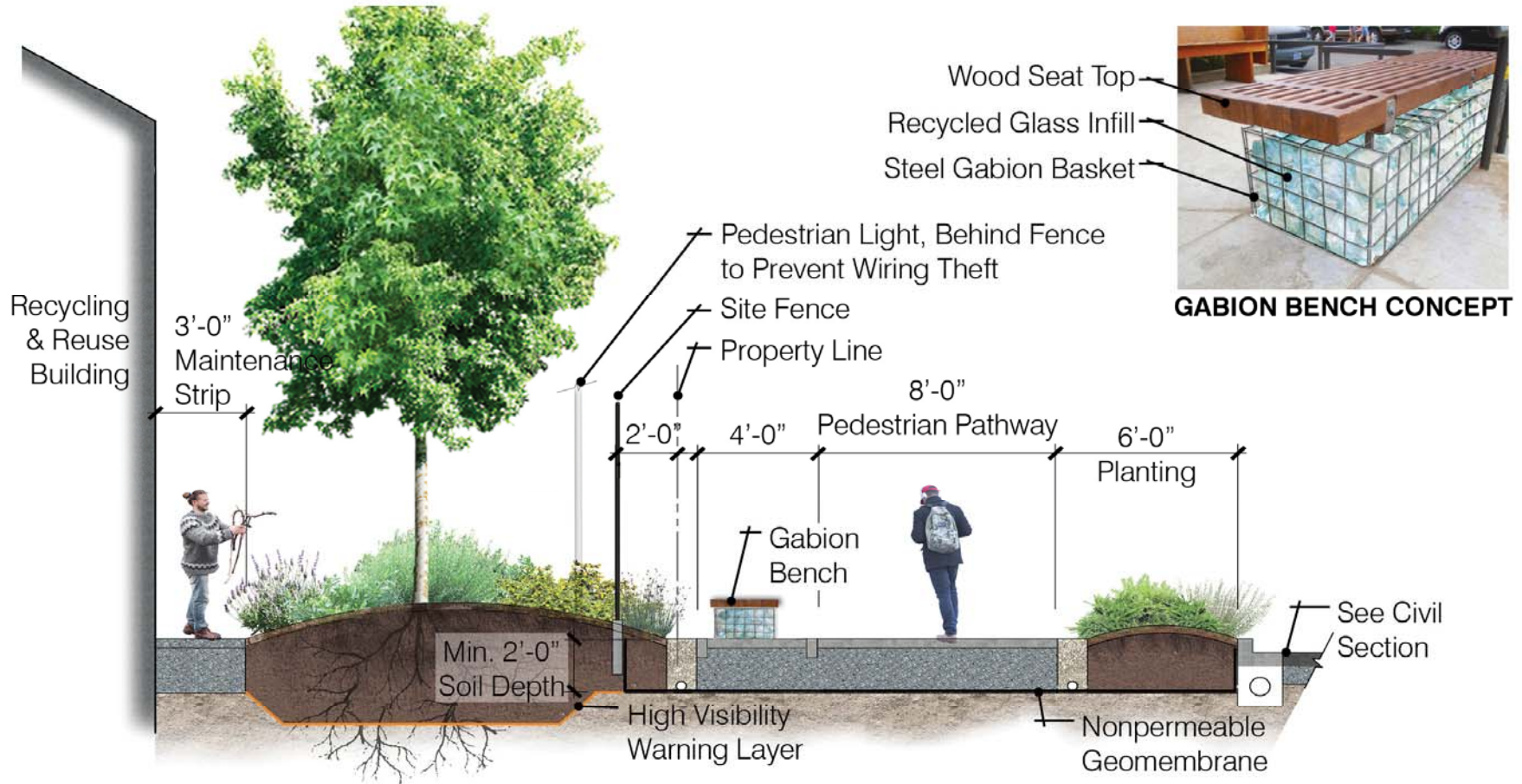
Landscape Sections: 5th Ave S

18 October 2018



Landscape Sections: 5th Ave S

18 October 2018



SECTION B-B' Pedestrian Pathway at Gabion Bench

Landscape Elevations C-C': 5th Ave S

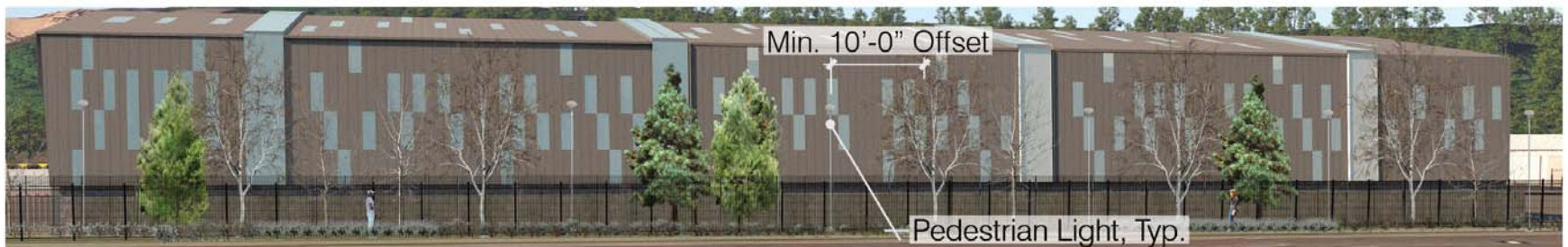
18 October 2018



ELEVATION Summer



ELEVATION Autumn



ELEVATION Winter

Architectural Concept



Facility Architecture



The Miller Hull Partnership

- Objective to provide similar “look and feel” to South Transfer Station Ph 1
 - Metal buildings
 - Emphasis on daylighting
 - Focus on specific elements



Site arrangement aerial bird's eye view



DESIGN MATERIALITY

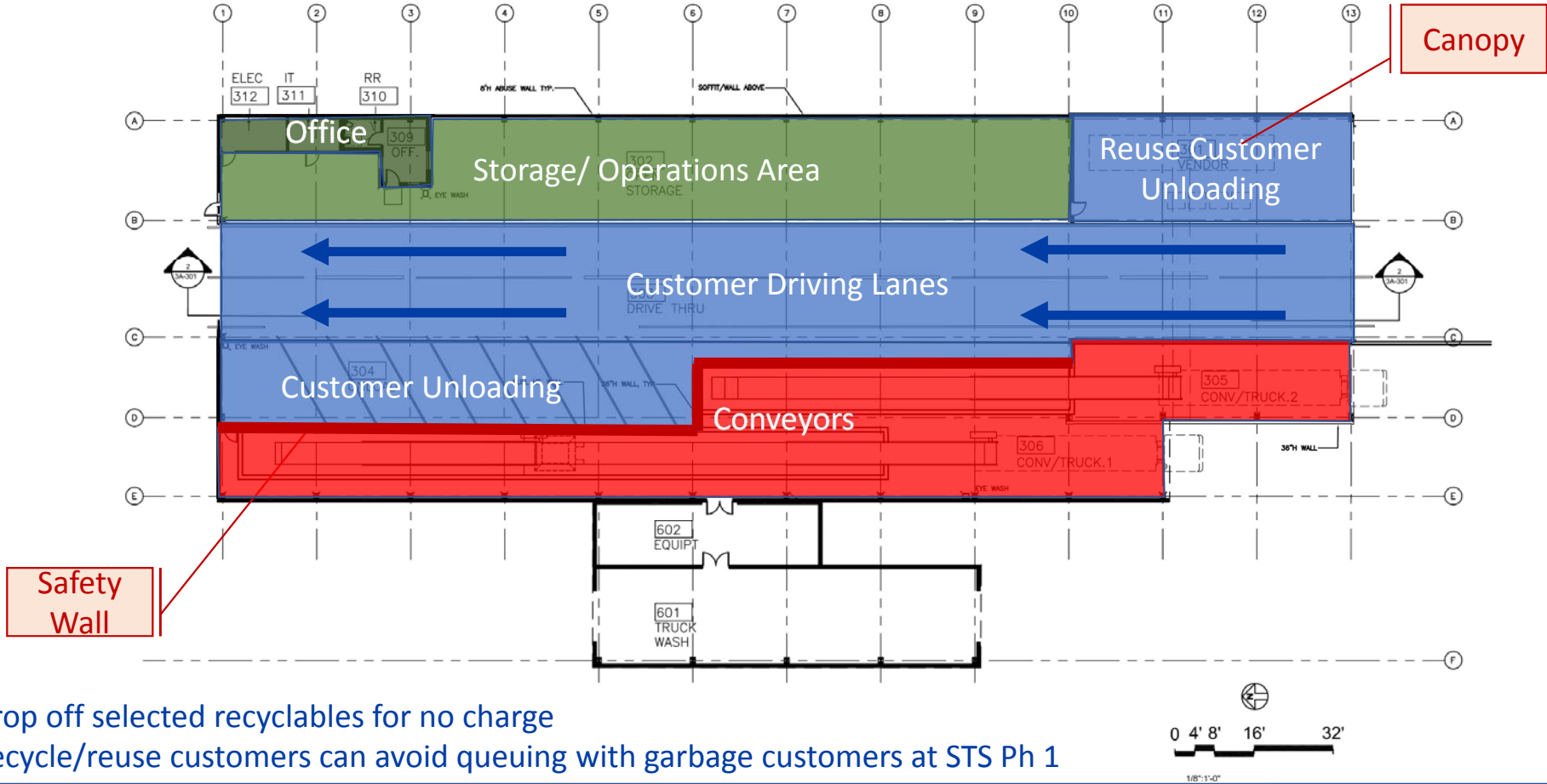
TEXTURES AND PATTERNS



Recycling & Reuse Building

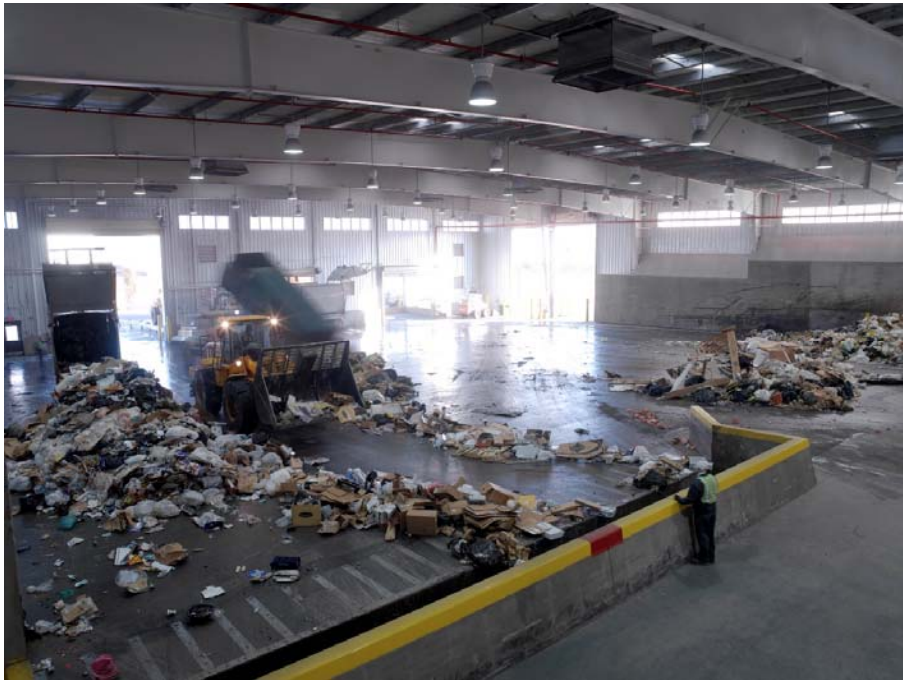


Recycling & Reuse Building - Floor Plan



- Drop off selected recyclables for no charge
- Recycle/reuse customers can avoid queuing with garbage customers at STS Ph 1

Recycling & Reuse Facility



Concrete safety wall for customer unloading



Heavier metals to be unloaded directly onto floor

Recycling & Reuse Facility

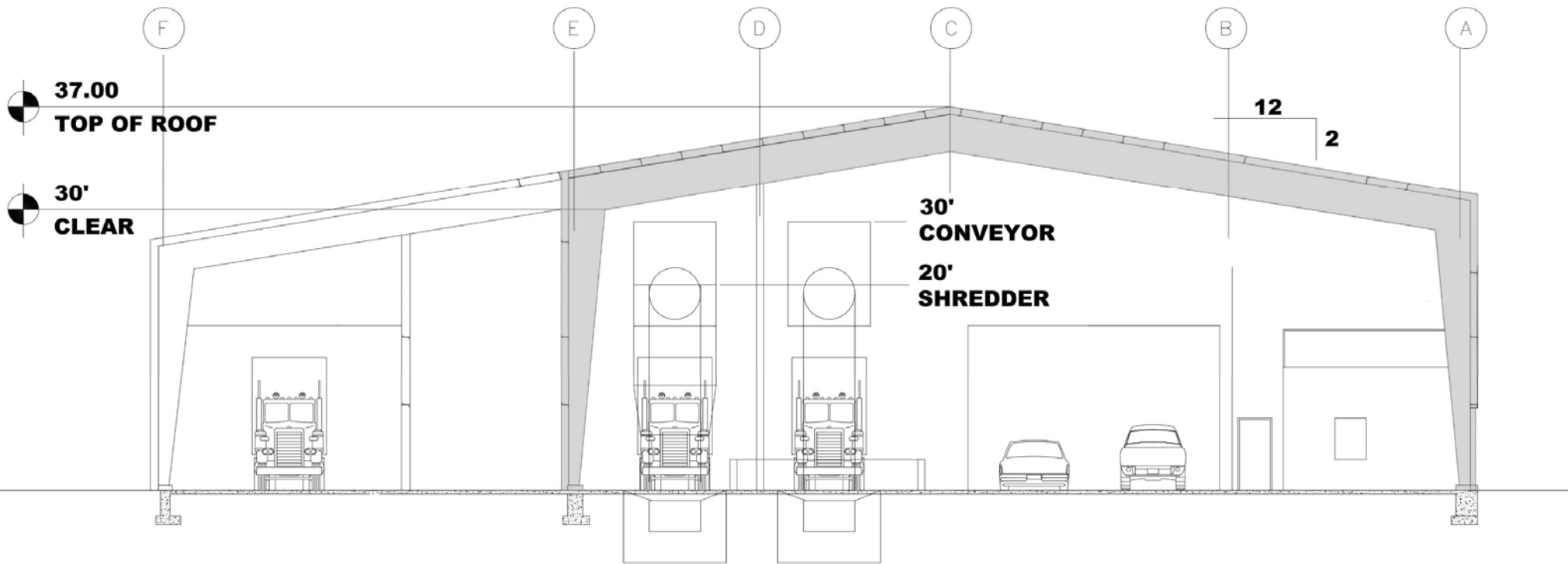


Conveyor elevate materials



Slow-speed shredder to improve density for hauling

Recycling & Reuse Facility

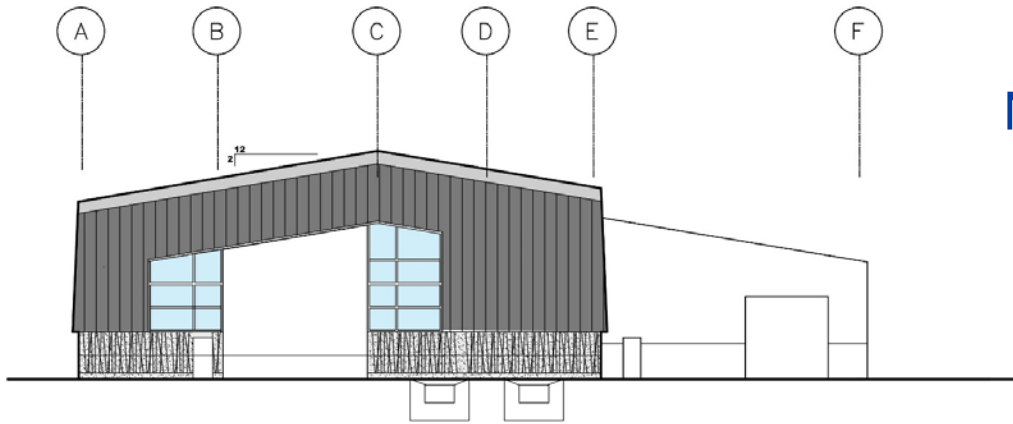






Texture & Pattern

ELEVATIONS: Concrete, Material Panels, Translucent Panels

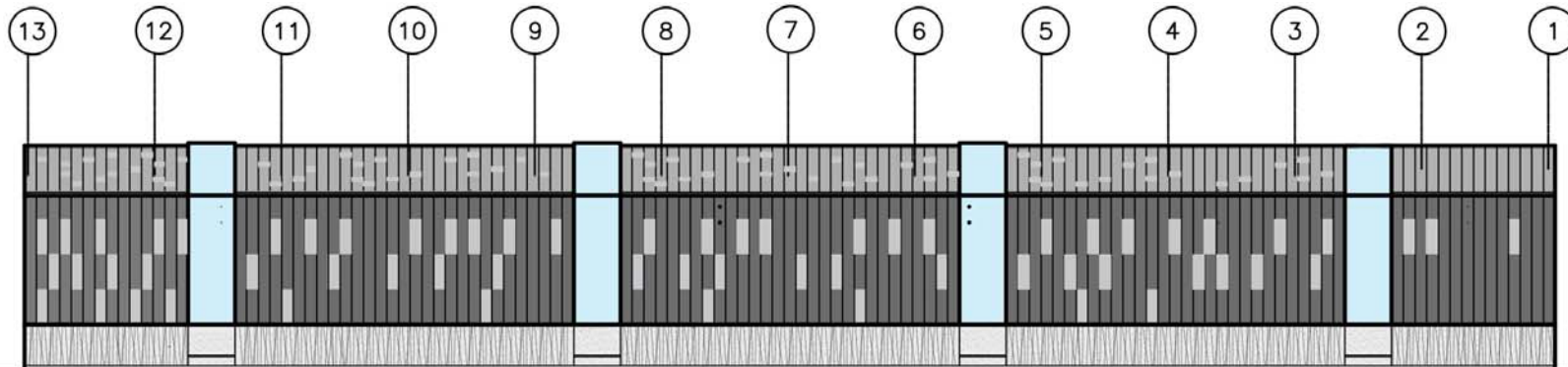


North Elevation



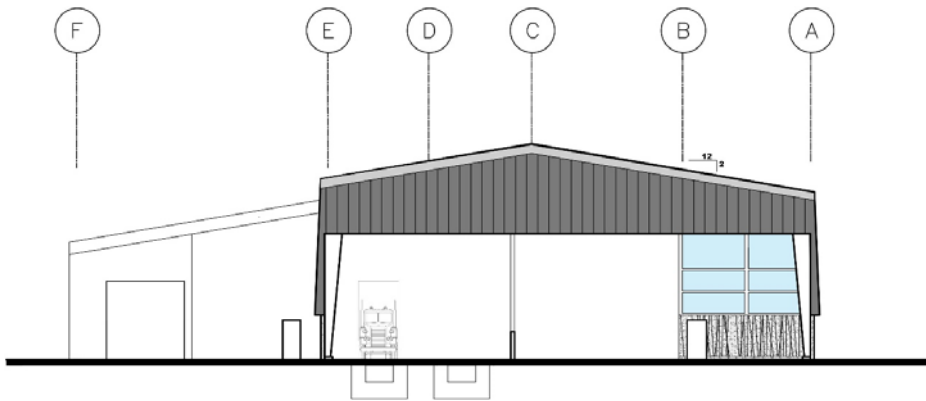
INSPIRATION MATERIALS

East Elevation



Texture & Pattern

ELEVATIONS: Concrete, Material Panels, Translucent Panels

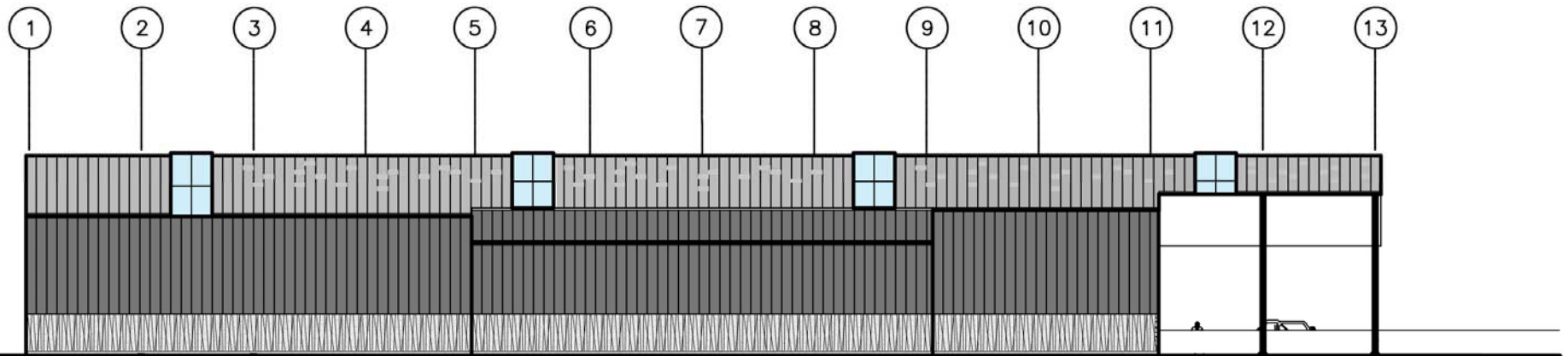


South Elevation



INSPIRATION MATERIALS




West Elevation



Sustainability Approach



SUSTAINABILITY PROGRAMS

LEED (v4)	CAPITAL GREEN
Integrative Process 	<i>Using Capital GREEN is an integrative process</i>
Location and Transportation 	Site, Climate
Site Selection 	Site
Water Efficiency 	Water
Energy and Atmosphere 	Energy, Climate
Materials and Resources 	Materials
Indoor Environmental Quality 	Indoor Environment



Project Sustainable Elements

- Sustainable objectives are set to meet the City of Seattle objectives:

- *Project objective: Capital GREEN*

1. Repurposing of closed landfill site
2. Successful negotiation with Ecology for tree planting
3. Reuse of demolition material
4. Use of recycled content materials (i.e. recycled asphalt)
5. Vehicle charging stations and provisions for future truck charging
6. Reduction of site energy use
7. Reduction of water use
8. Reduction of off site light pollution
9. Underground provisions to minimize disturbance to landfill for re-development



Project Schedule



THANK YOU.

