



SOUTH TRANSFER STATION PHASE II

SEATTLE DESIGN COMMISSION – CONCEPT LEVEL

May 5, 2016 1:00PM – 2:30PM



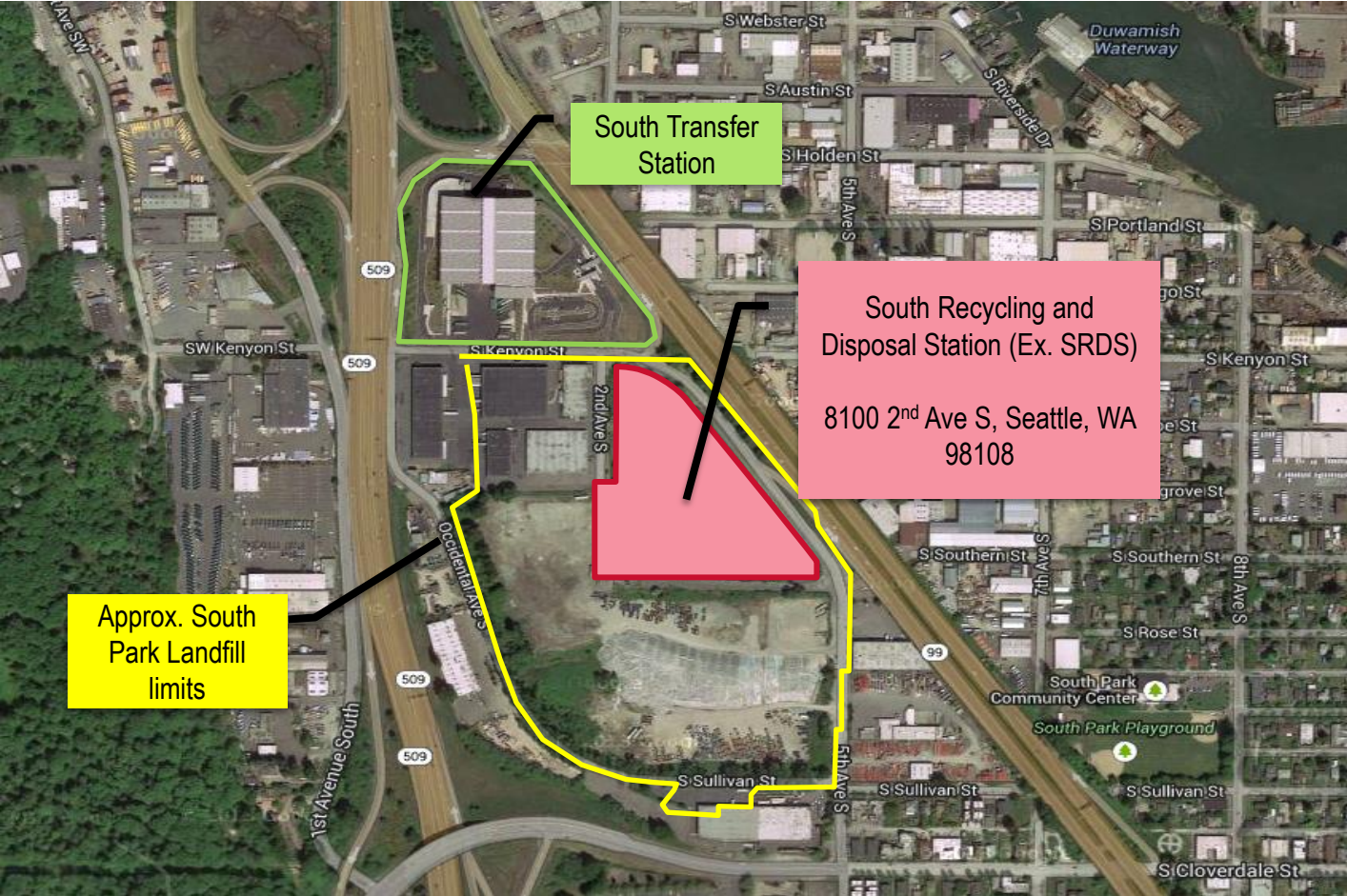
Agenda

1. **Project Introduction**
2. **Existing Conditions**
3. **Vicinity Map**
4. **Design Parameters**
5. **Site Layout, Connectivity**
6. **Architectural Concept**
7. **Landscape Approach**
8. **Public Art**

PROJECT NEEDS

- Existing SRDS facilities are past useful life.
- Current South Transfer Station was not planned to accommodate all solid waste needs. SRDS is required for additional solid waste facilities.
- Redevelopment of SRDS helps meet the City's recycling goal of 70% by 2022.
- SPU's Drainage and Wastewater needs additional facilities based on increased maintenance of sewer and storm pipes.
- Landfill closure is required by Dept. of Ecology.

EXISTING CONDITIONS



Approx. South Park Landfill limits

South Transfer Station

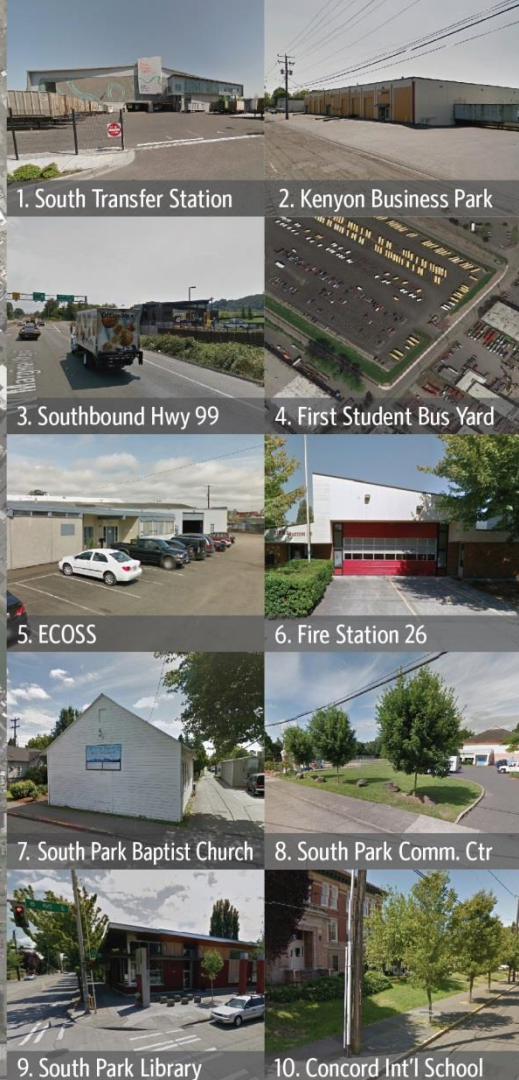
South Recycling and Disposal Station (Ex. SRDS)
8100 2nd Ave S, Seattle, WA
98108

EXISTING CONDITIONS

- ① Existing HHW (to remain)
- ② Former Transfer Station
- ③ Offices
- ④ Maintenance
- ⑤ Trailer Parking
- ⑥ Weigh Scales



VICINITY MAP



1. South Transfer Station

2. Kenyon Business Park

3. Southbound Hwy 99

4. First Student Bus Yard

5. ECOS

6. Fire Station 26

7. South Park Baptist Church

8. South Park Comm. Ctr

9. South Park Library

10. Concord Int'l School

DESIGN PARAMETERS

GOALS

- Cohesive site layout
- Regulatory compliance
- Efficient use of space
- Site access management (public and non- public areas)
- Perform mitigation that benefits community
- Minimize community impacts
- Minimize service interruption during construction

RSJI TOOLKIT AND SPU

- **Utility-wide:**
 - Tools embedded into asset management-Stagegate process
 - EJSE staff part of project “Core Team”
- **Project specific:**
 - Provide comparable services between north-end and south-end facilities
 - Development of community stakeholder group
 - Focus on environmental benefits and operational impacts

PROJECT SCOPE AND DESIGN PARAMETERS

- Landfill closure
 - Capping
 - New trees are not possible due to landfill cap
 - Site and building landfill gas provisions
- Household Hazardous Waste (HHW) facility
- Maintain existing operations
- Recycling & reuse center
- Space for potential future Material Recovery Facility (MRF)
- Solid waste trailer parking & support facilities
- Dewatering facility
- Pedestrian pathway
- Public art

PROJECT SCOPE AND DESIGN PARAMETERS

- General site arrangement
 - Constrained site due to numerous users and facilities
 - Separation of public and SPU-only areas
 - Soil depth is limiting factor in plant selection
 - Perimeter security fence
 - Lighting (safety, security inside fence)
 - Single-story buildings
 - Connection with existing South Transfer Station

PROPOSED SITE LAYOUT



TRANSFER STATION FUNCTIONAL RELATIONSHIP

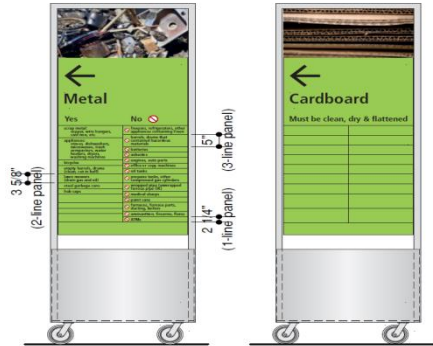
Customer traffic →

SPU truck traffic →







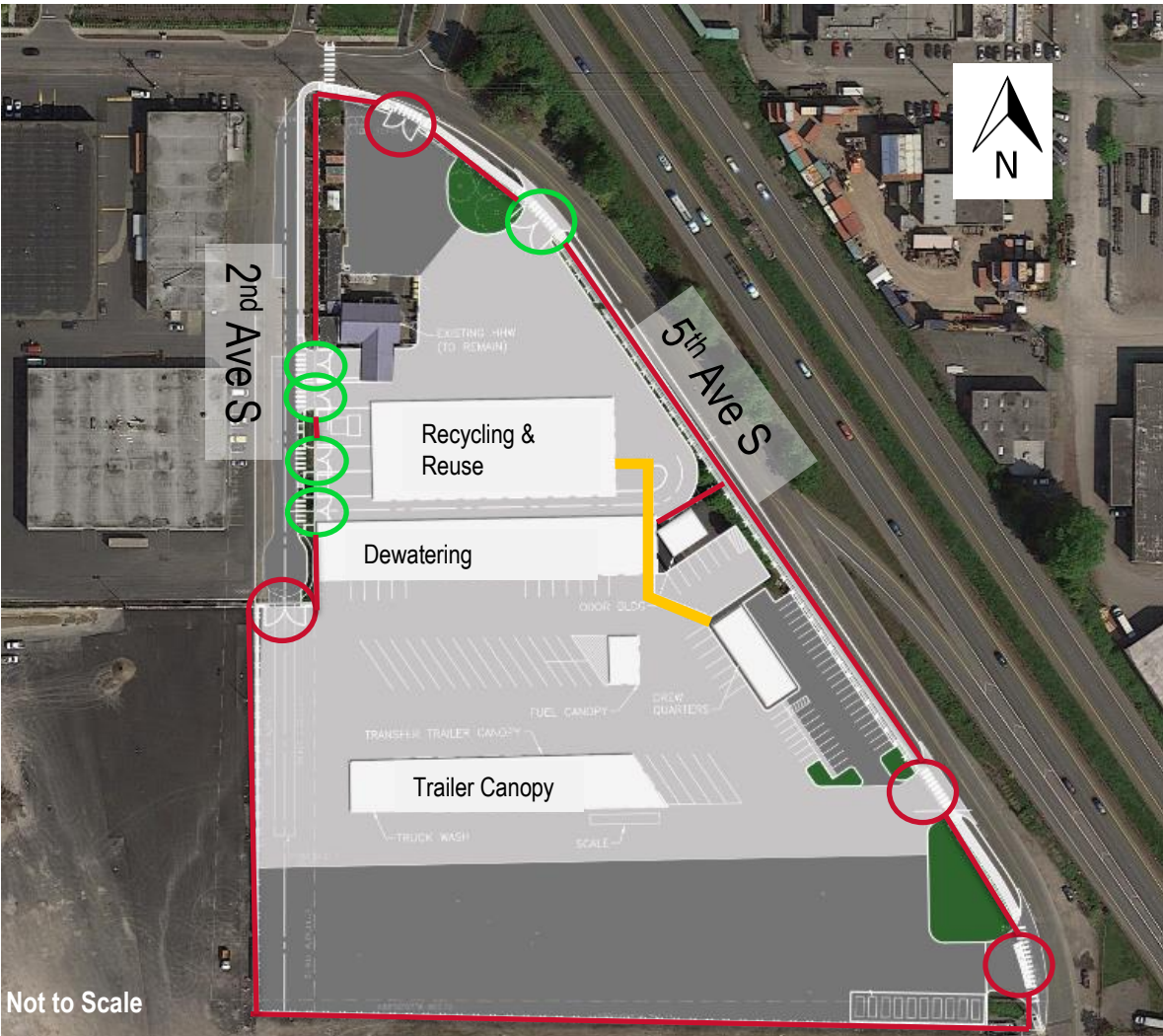
Not to Scale

FACILITY SIGNAGE



SITE ACCESS AND SECURITY

- Fence 
- Customer Gate 
- SPU Gate 
- Walkway 



ARCHITECTURAL CONCEPT

COMMUNITY INPUT TO DATE

When asked “What do you like about the South Transfer Station architecture...?”

- Artwork
- Recycled pieces, “found art” wall
- View to tipping floor
- Use of daylight and diffused lighting is a success in this project
- Use of different materials (metal, concrete)
- Has a feeling of being grounded to site, connected to landscape
- Like the identification of the site at night using lighting

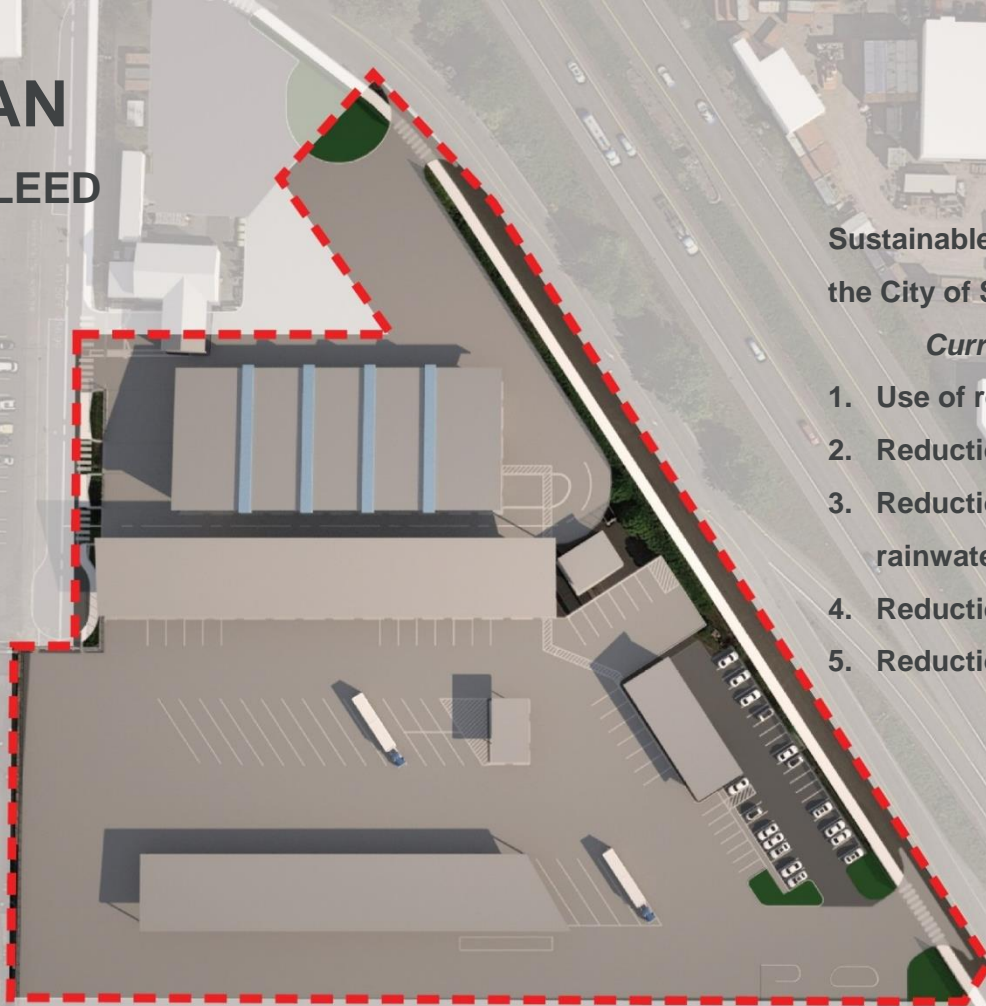
SITE ARRANGEMENT

AERIAL BIRD'S EYE VIEW



SITE PLAN

PROPOSED LEED BOUNDARY



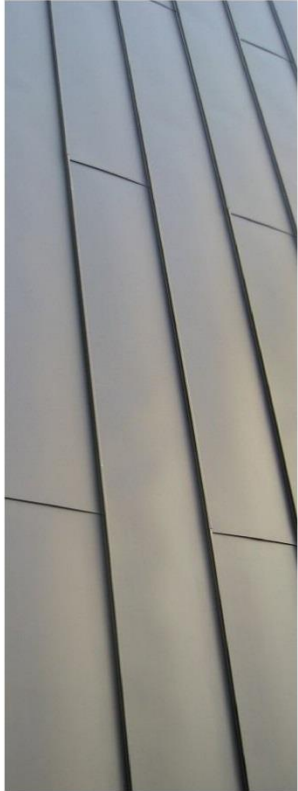
Sustainable objectives are set to meet the City of Seattle objectives:

Current objective: LEED GOLD.

1. Use of recycle content materials
2. Reduction of site energy use.
3. Reduction of water use and possible rainwater harvesting.
4. Reduction of off site light pollution.
5. Reduction of heat island effect.

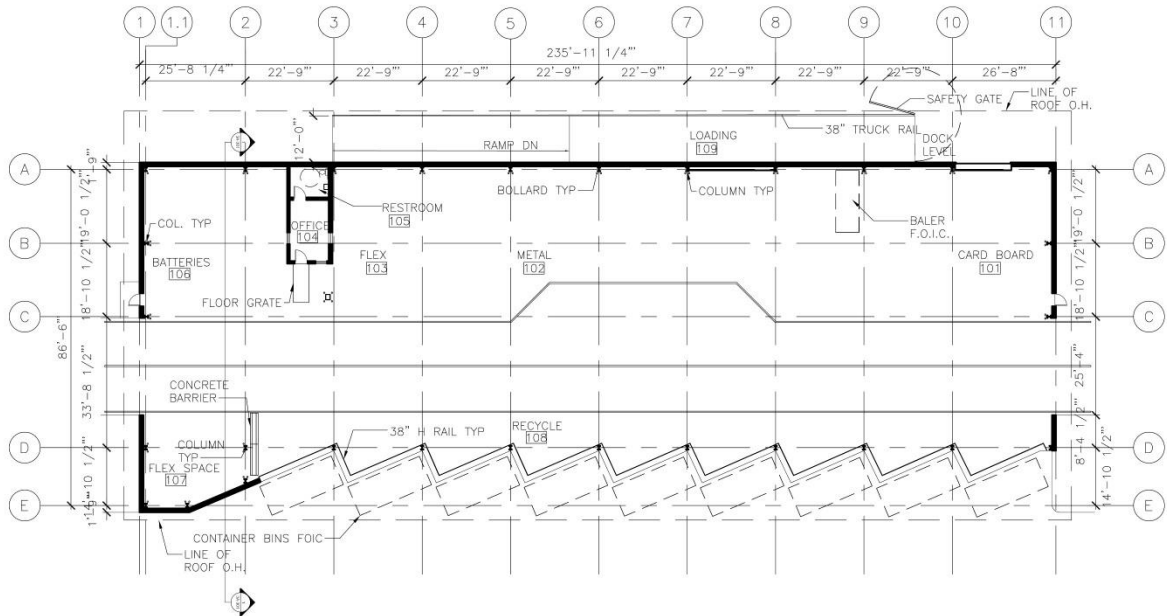
DESIGN MATERIALITY

TEXTURES AND PATTERNS



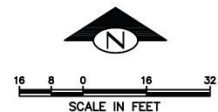
RECYCLE & REUSE BUILDING

FLOOR PLAN



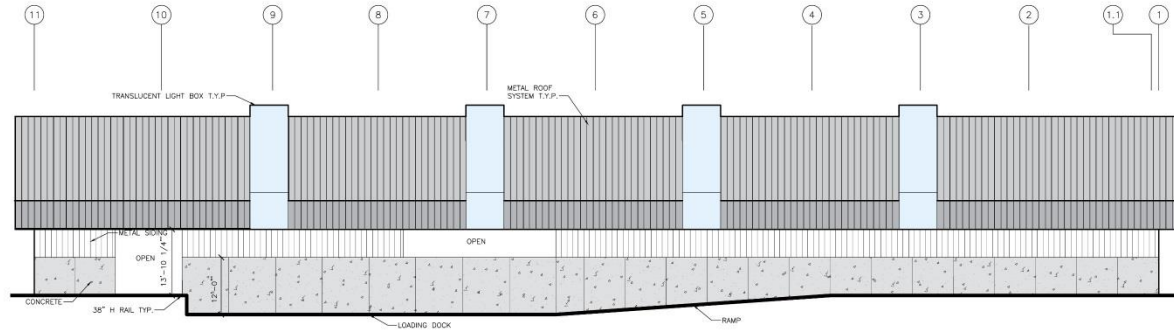
GROUND FLOOR PLAN

- Drop off selected recyclables for no charge
- Recycle/reuse customers can avoid queuing with garbage customers at STS

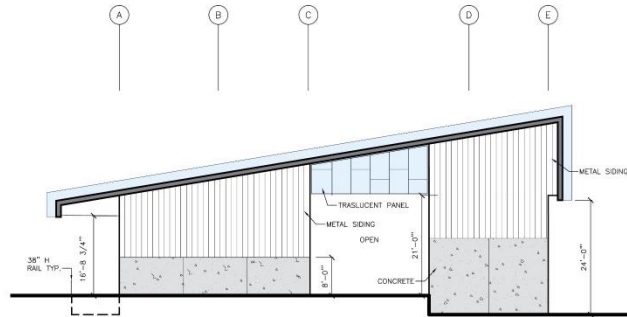


TEXTURE & PATTERN

ELEVATIONS: CONCRETE, METAL PANELS, TRANSLUCENT PANELS



NORTH ELEVATION



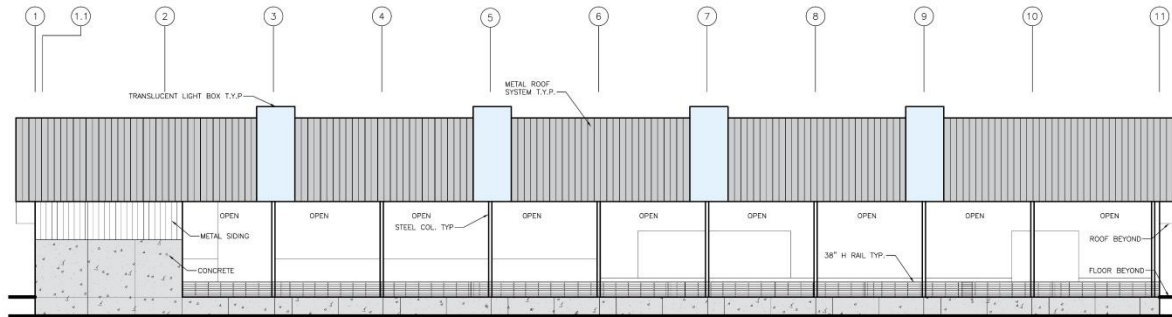
WEST ELEVATION



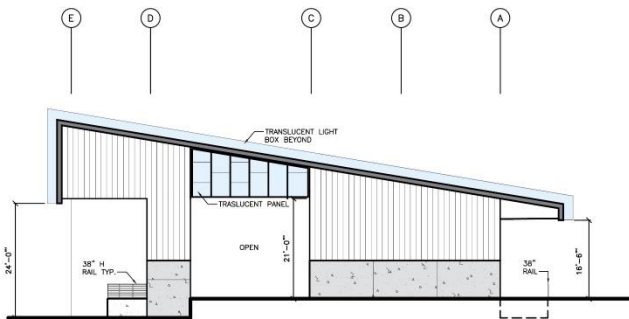
INSPIRATION MATERIALS

RECYCLE & REUSE BUILDING

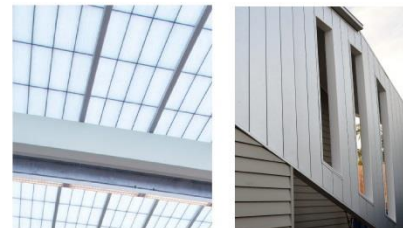
ELEVATIONS



SOUTH ELEVATION



EAST ELEVATION



INSPIRATION MATERIALS

RECYCLE & REUSE BUILDING

VIEW WEST ALONG HWY 99



RECYCLE & REUSE BUILDING

EDGE CONDITIONS: METAL FENCE, ARCHITECTURAL METALS, CONCRETE



RECYCLE & REUSE BUILDING

FACILITY DRIVE-UP ENTRY



RECYCLE & REUSE BUILDING

INTERIOR VIEW



RECYCLE & REUSE BUILDING

INTERIOR VIEW



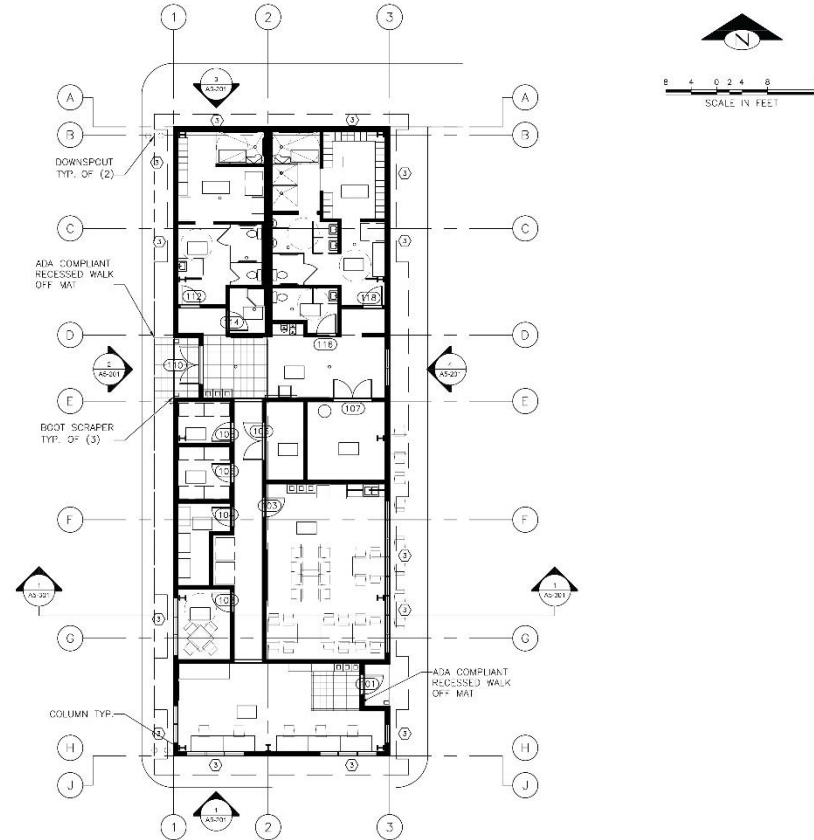
RECYCLE & REUSE BUILDING

FACILITY PUBLIC EXIT



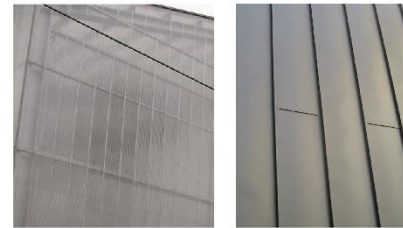
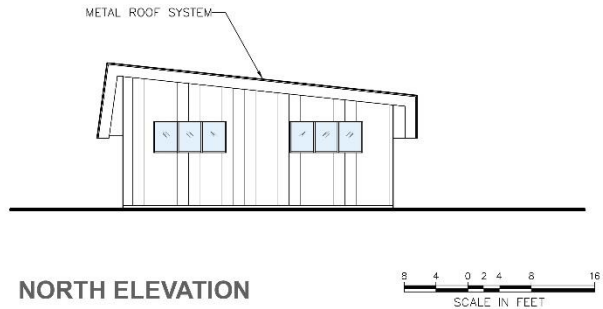
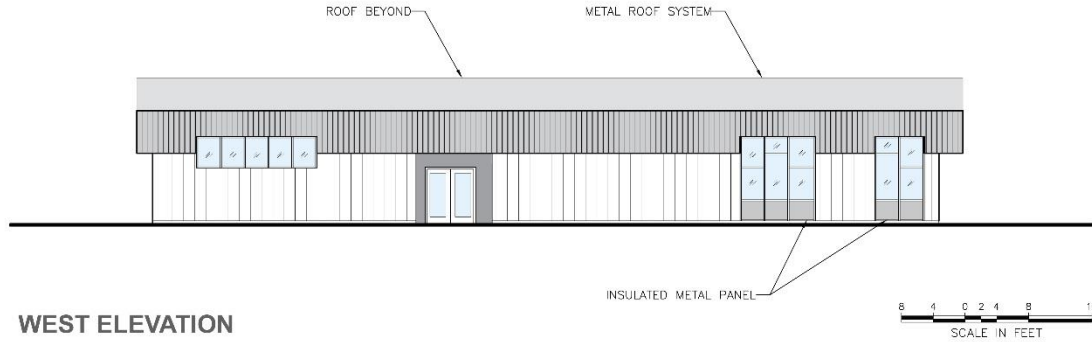
CREW QUARTERS BUILDING

FLOOR PLAN



CREW QUARTERS BUILDING

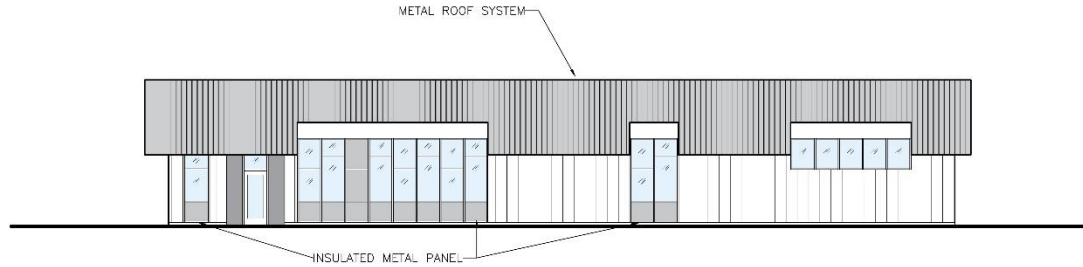
ELEVATIONS



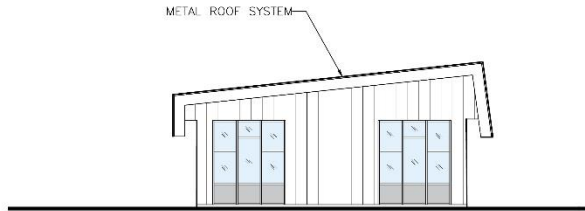
INSPIRATION MATERIALS

CREW QUARTERS BUILDING

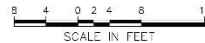
ELEVATIONS



EAST ELEVATION



SOUTH ELEVATION



INSPIRATION MATERIALS

CREW QUARTERS BUILDING

EXTERIOR PERSPECTIVE



LANDSCAPE APPROACH

PEDESTRIAN PATH

- Connectivity from STS Phase 1
- The stakeholders are interested in:
 - Considerations for safety and lighting
 - Potential for “green wall”
 - Transparent so people can see facility
 - Should be attractive
 - Have value as a destination





EXISTING CONDITIONS

KEY MAP



EXISTING CONDITIONS

KEY MAP



EXISTING CONDITIONS

KEY MAP



EXISTING CONDITIONS

KEY MAP



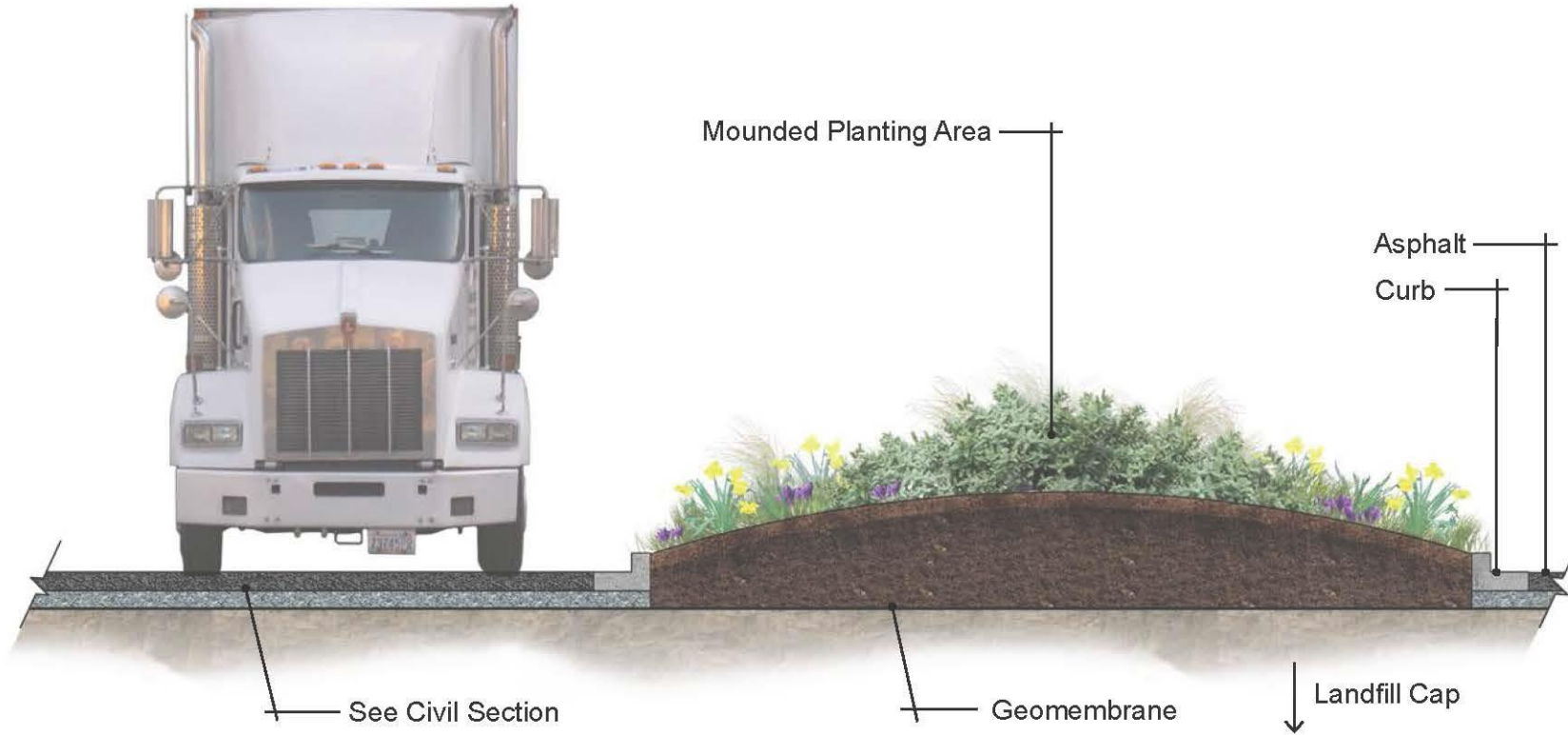
EXISTING CONDITIONS

KEY MAP



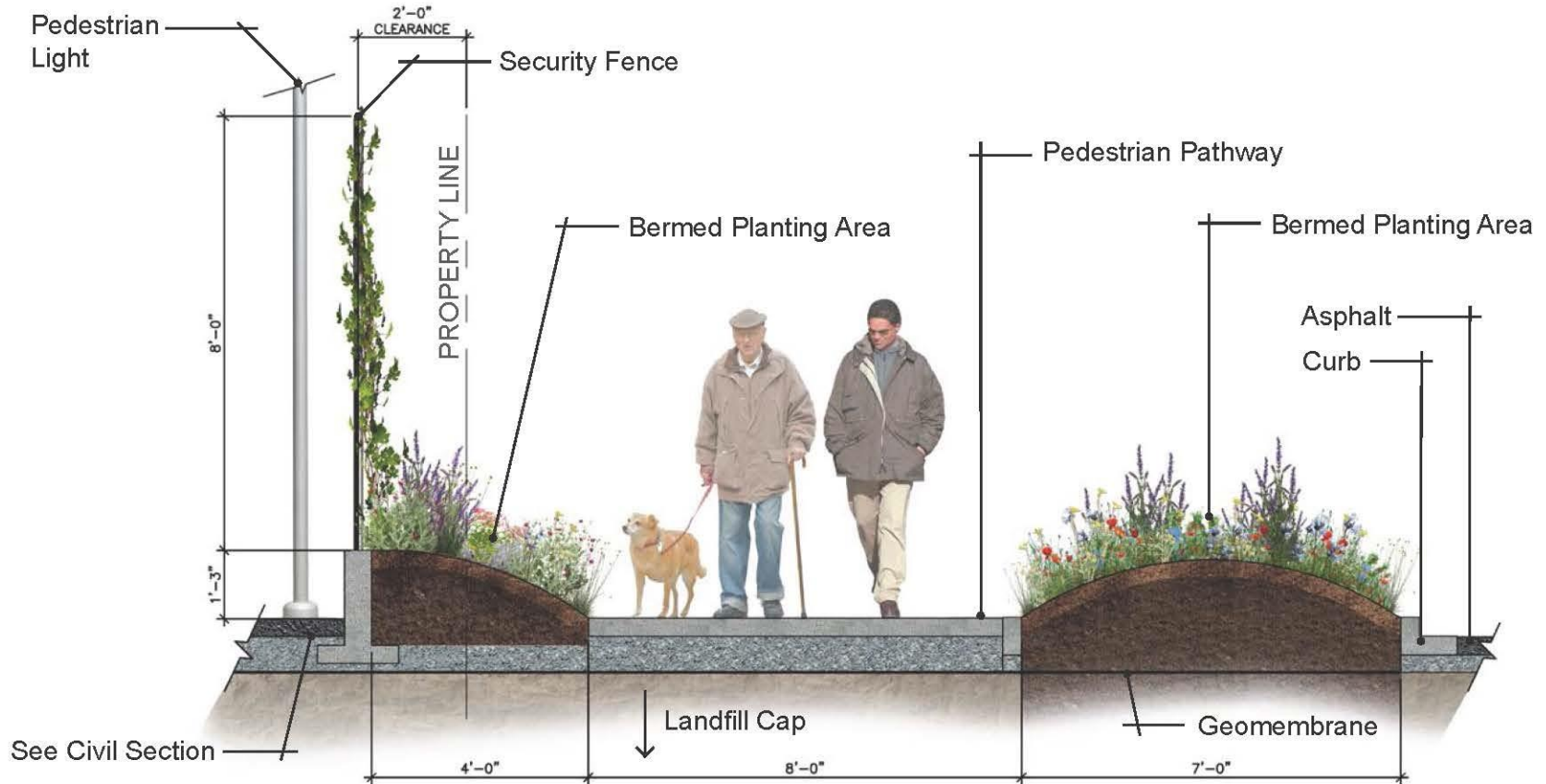
EXISTING CONDITIONS

INTERIOR TYPICAL PLANTING ISLAND



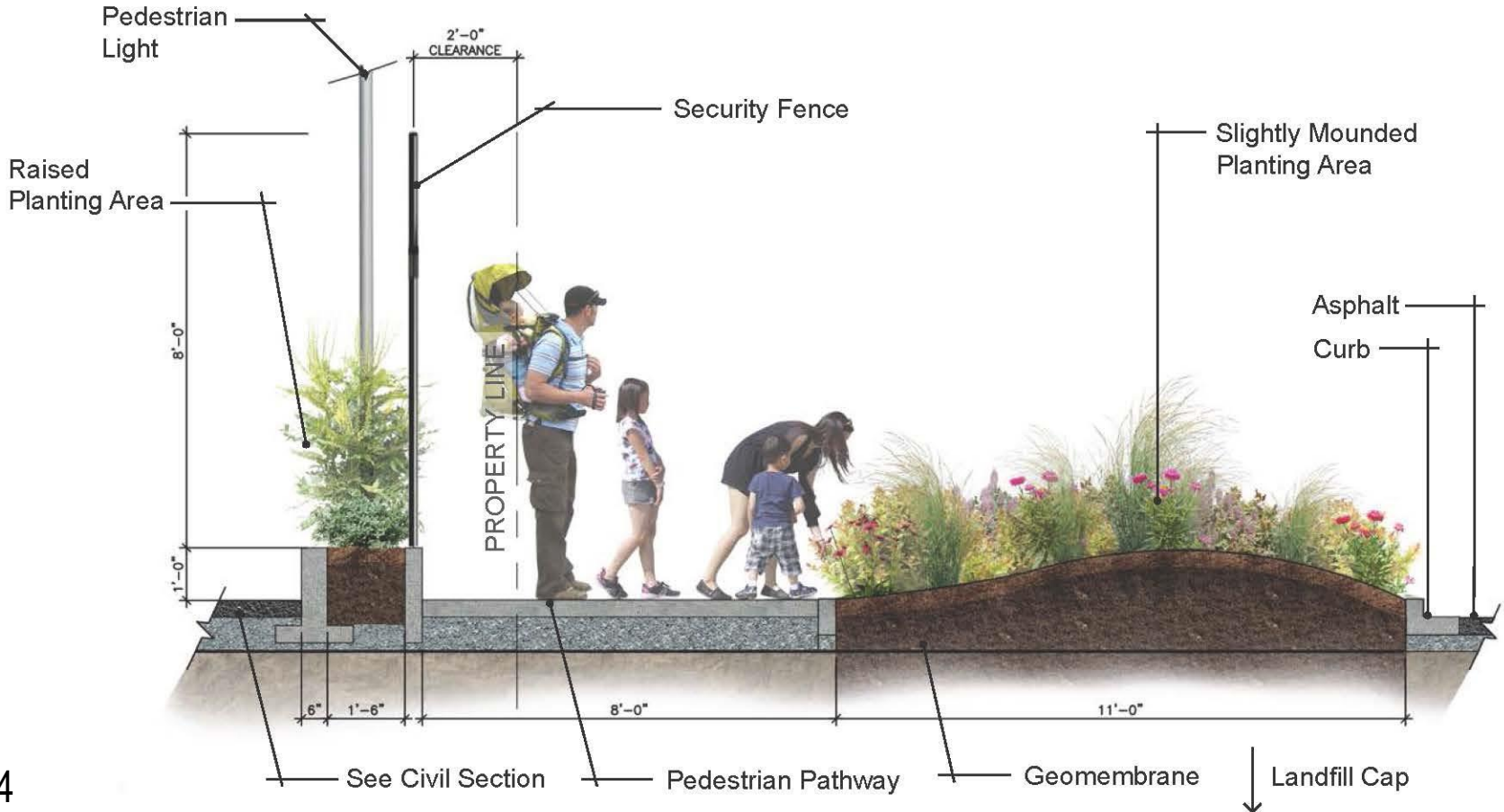
PUBLIC MEETING #2: PERENNIAL PATHWAY

28 MARCH 2016



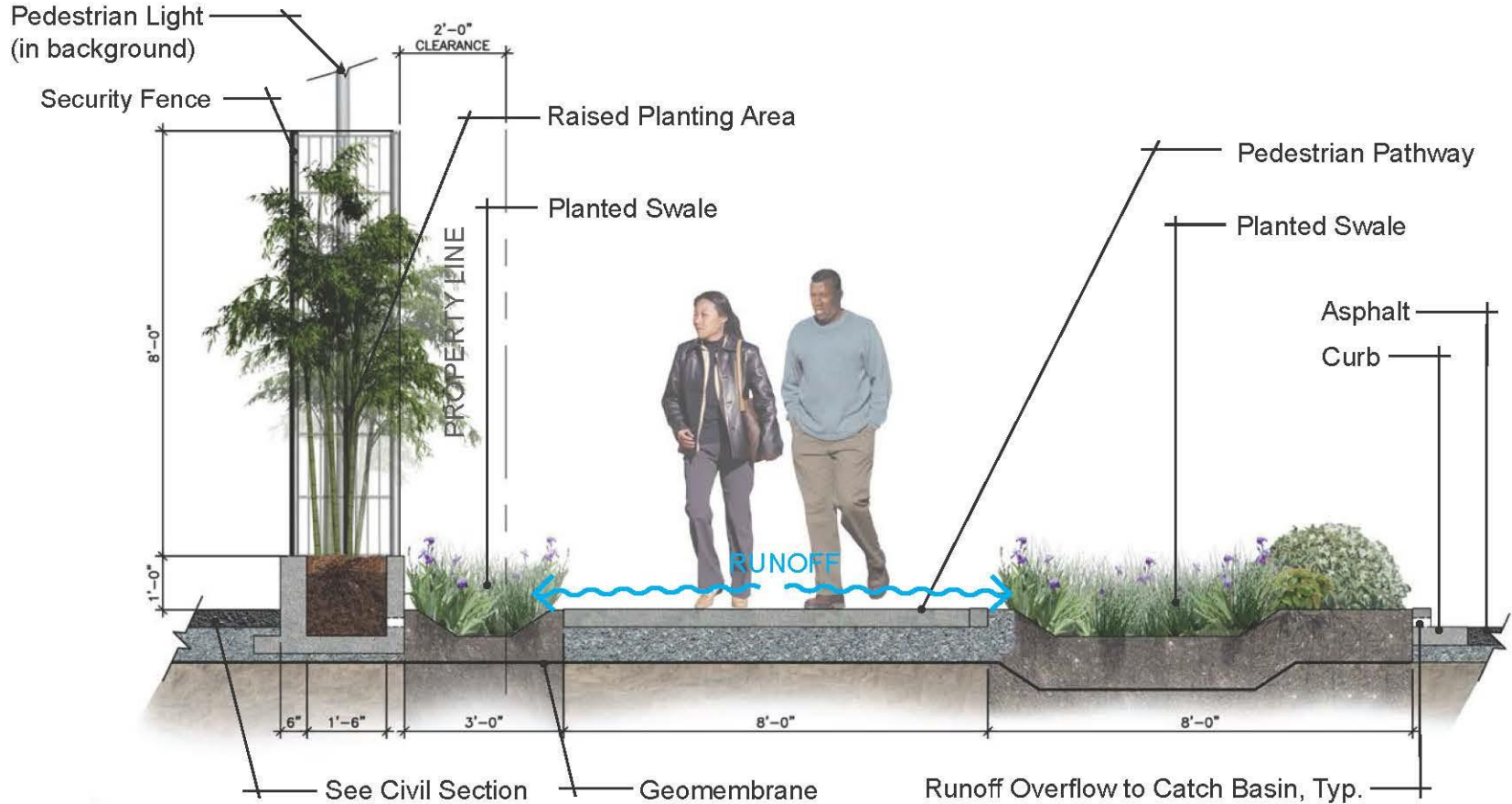
PUBLIC MEETING #2: WATER-WISE WALKWAY

28 MARCH 2016

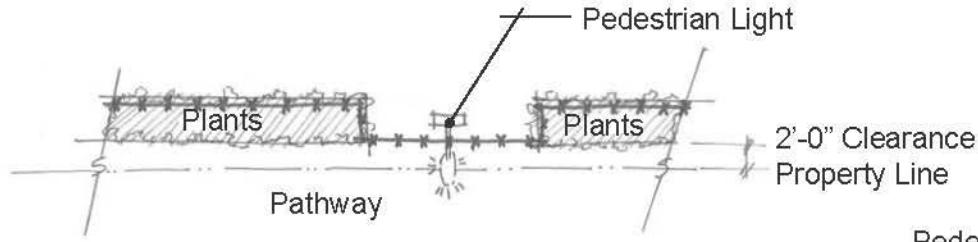


PUBLIC MEETING #2: RAINWATER RUN

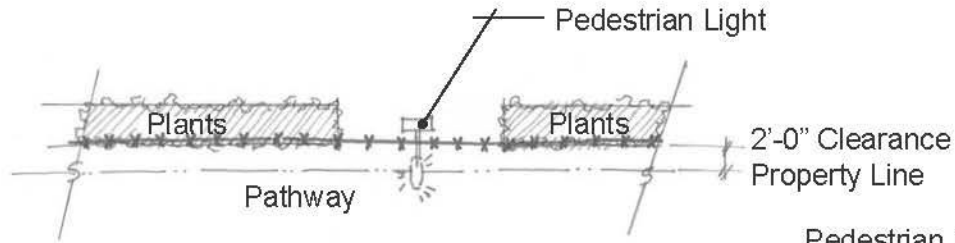
28 MARCH 2016



PATHWAY FENCE LAYOUT: CRENELLATION CONCEPT



PATHWAY FENCE LAYOUT: LINEAR CONCEPT

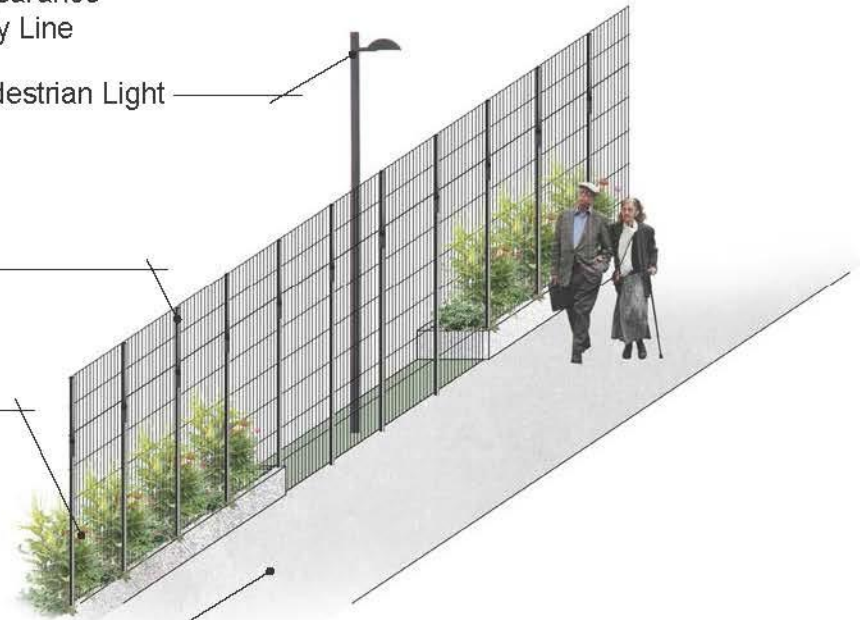


Pedestrian Light

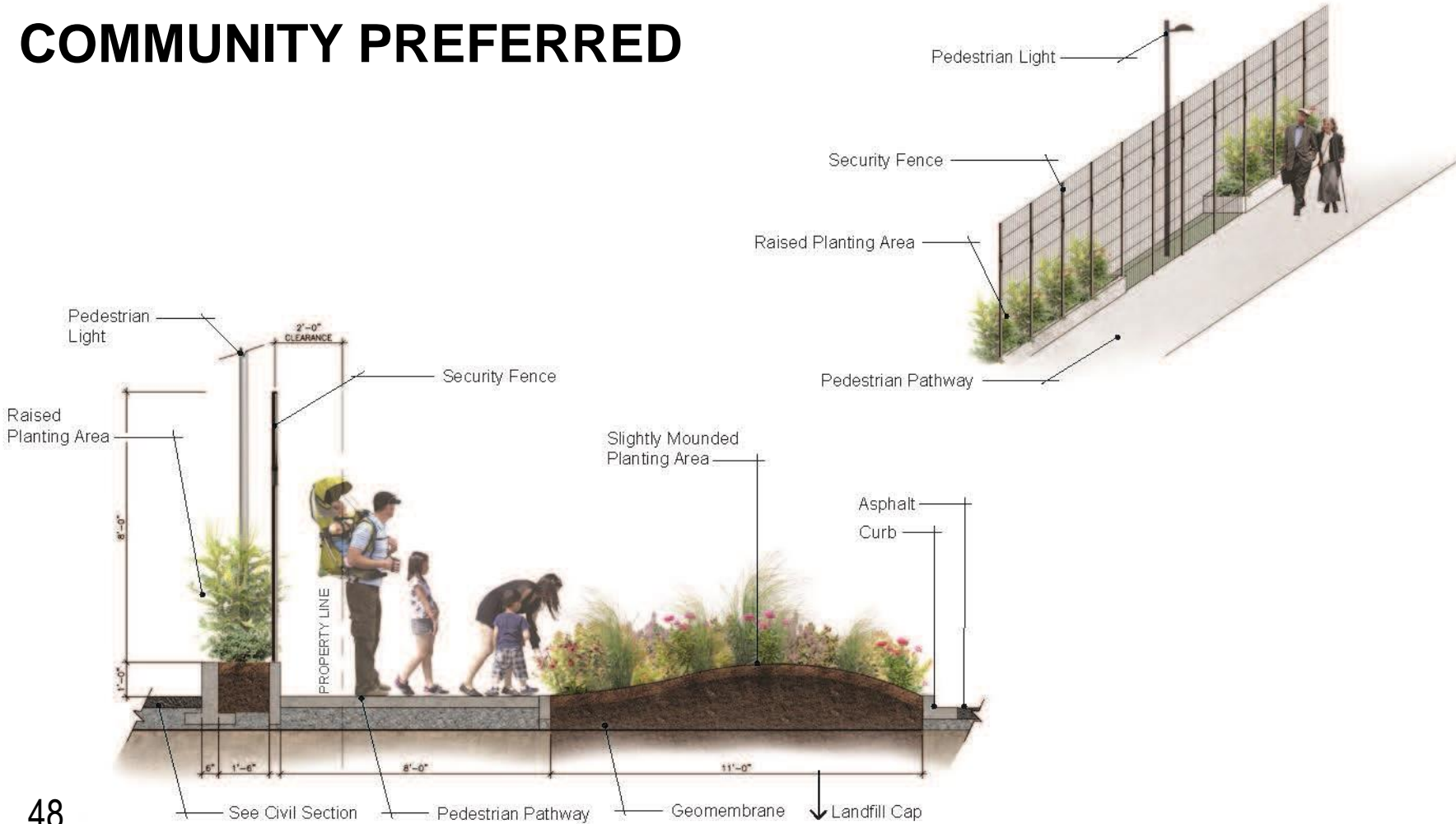
Security Fence

Raised Planting Area

Pedestrian Pathway



COMMUNITY PREFERRED



PUBLIC ART



Adam Kuby



THANK YOU.