



SR 520 Montlake to Lake Washington I/C | February 21, 2019

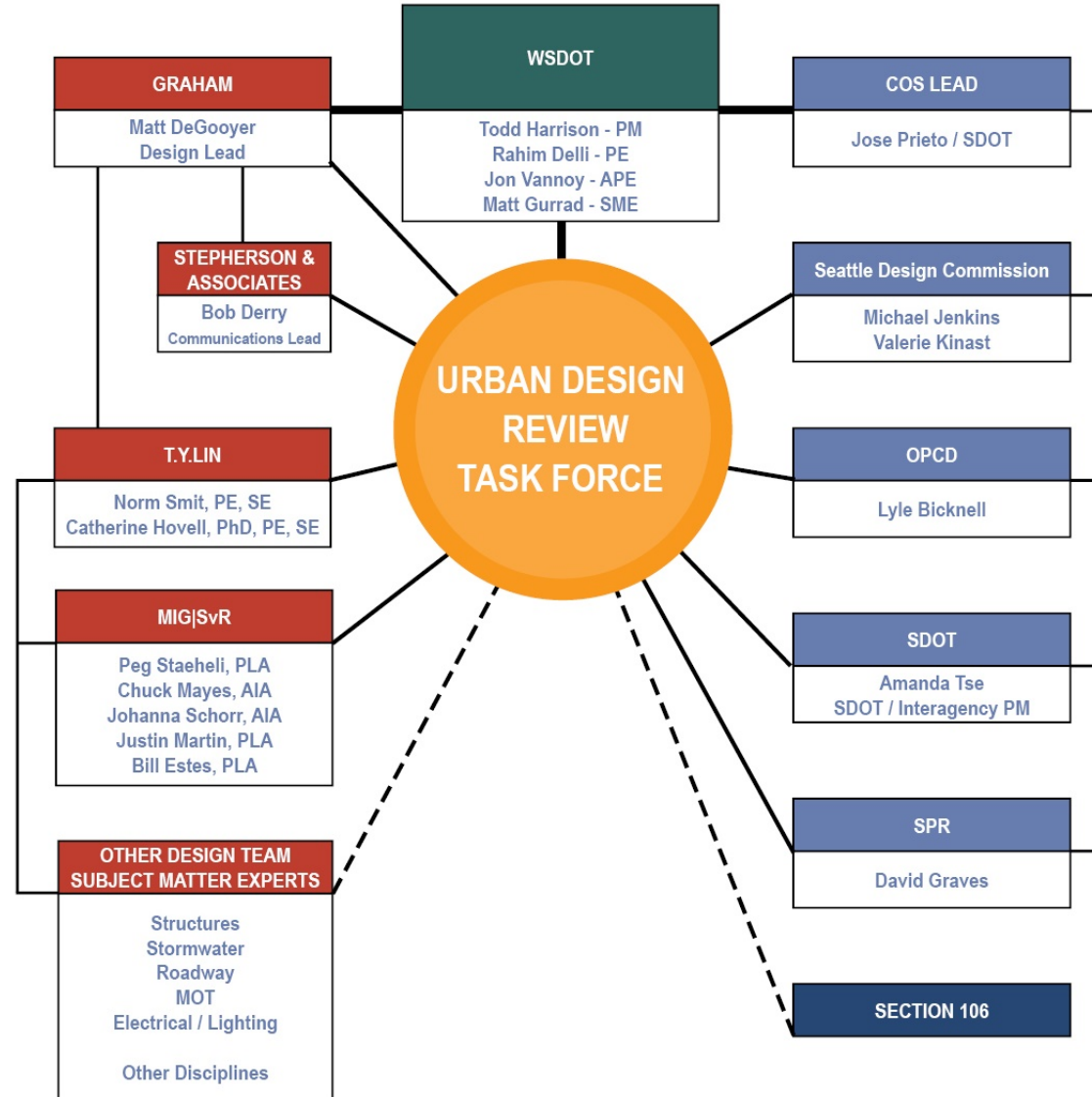
# Seattle Design Commission Project Overview and Update



# Presentation Overview

- **Team Introduction**
- **Contract Overview and Comparisons of Design**
  - WSDOT/City of Seattle Design-Build Agreement
- **Prescriptive Requirements: Materials**
- **Proposed Timeline for SDC Formal Review**
- **Next**

# Team Introduction





# Contract Overview and Comparisons of Design





# Project Site – Montlake Area





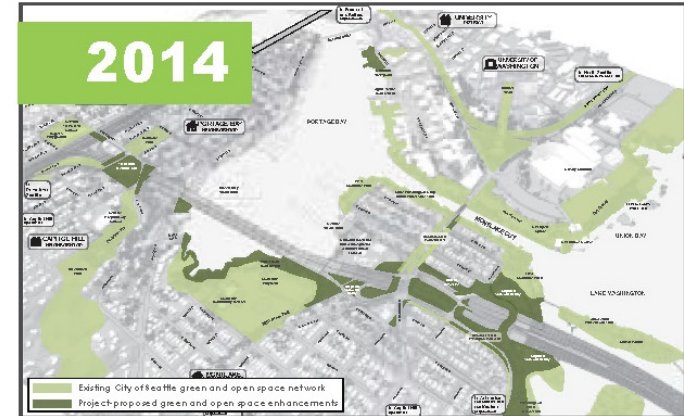
# Nature Meets the City (2012 Community Concept)



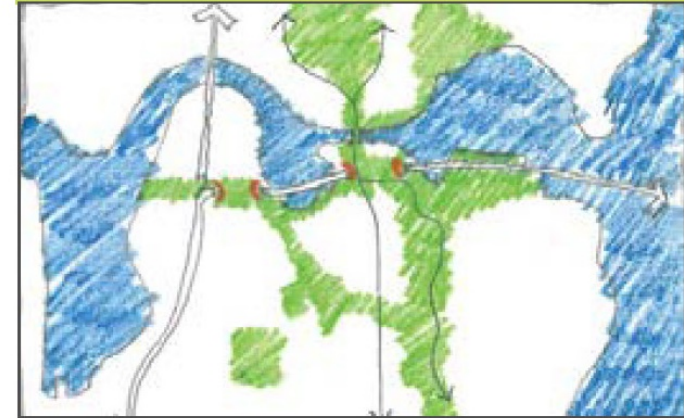
*Olmsted Parks, Boulevards and Playgrounds Plan  
Seattle Board of Park Commissioners*



*Bands of Green Plan  
Seattle Parks Foundation*

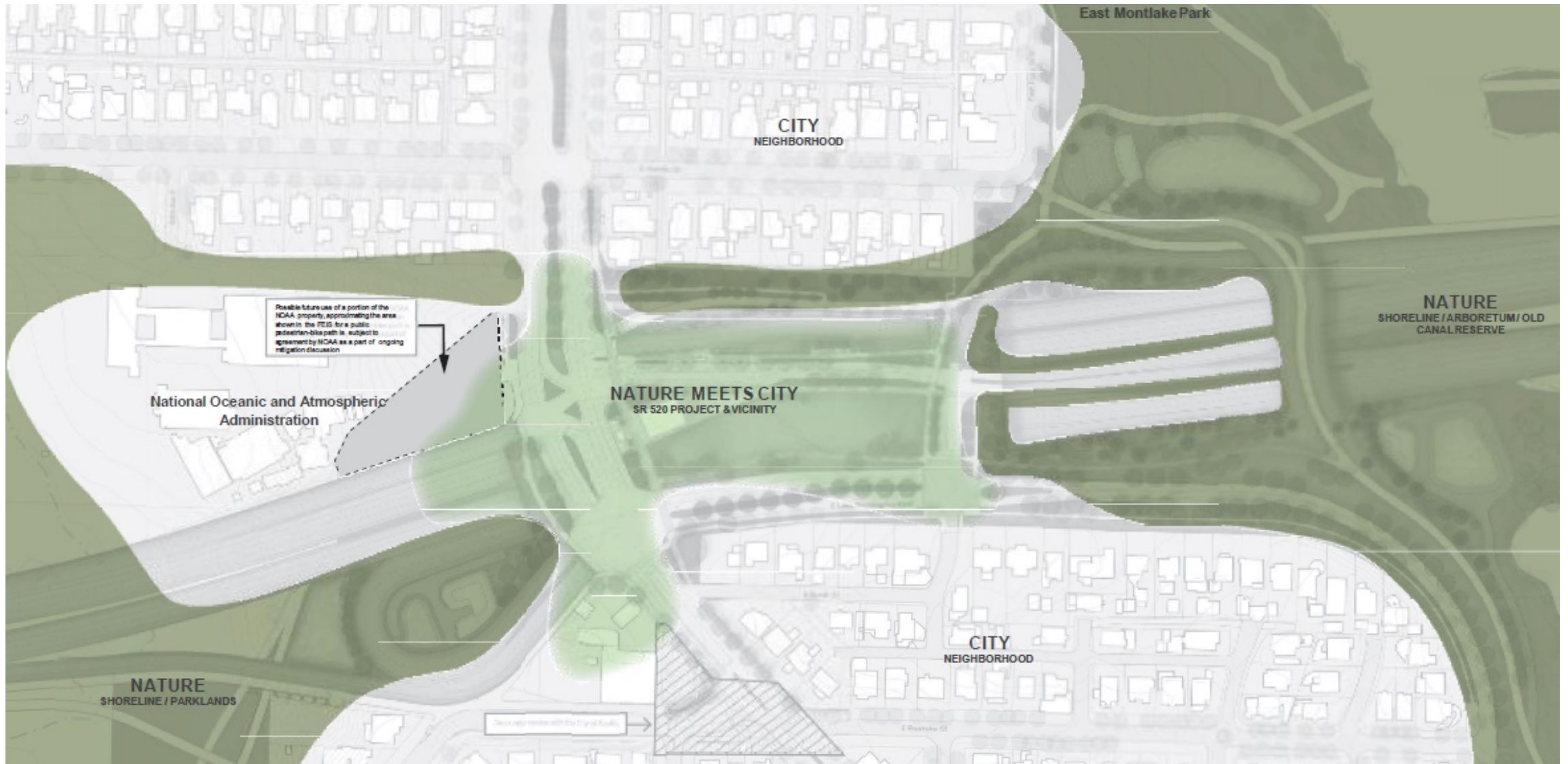


*The next 100 years: project-proposed green network and open space enhancements*





# Nature Meets the City (2012 Community Concept)





# 2016 Plan (WSDOT/SDC)





# 2018 WSDOT RFP Plan

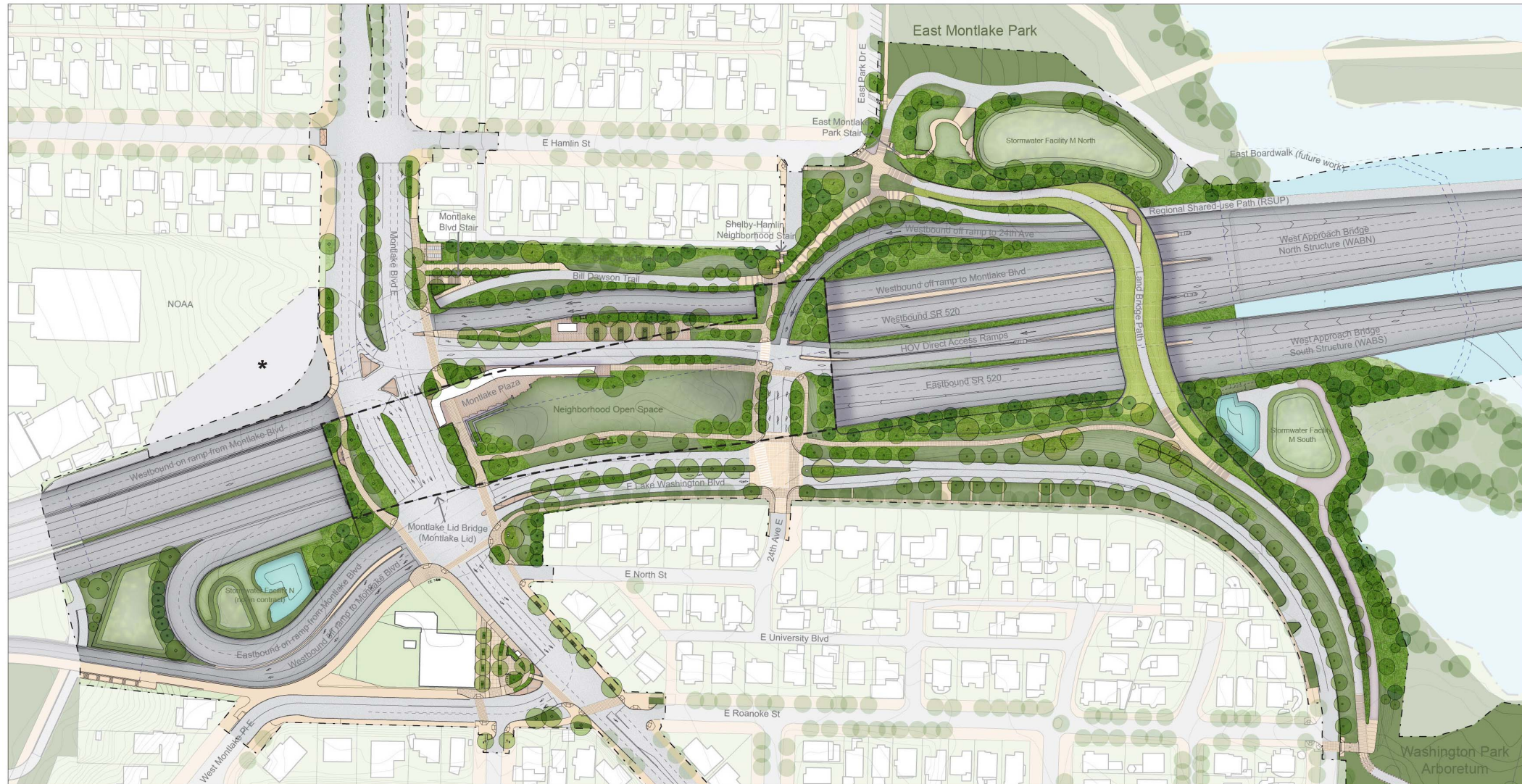


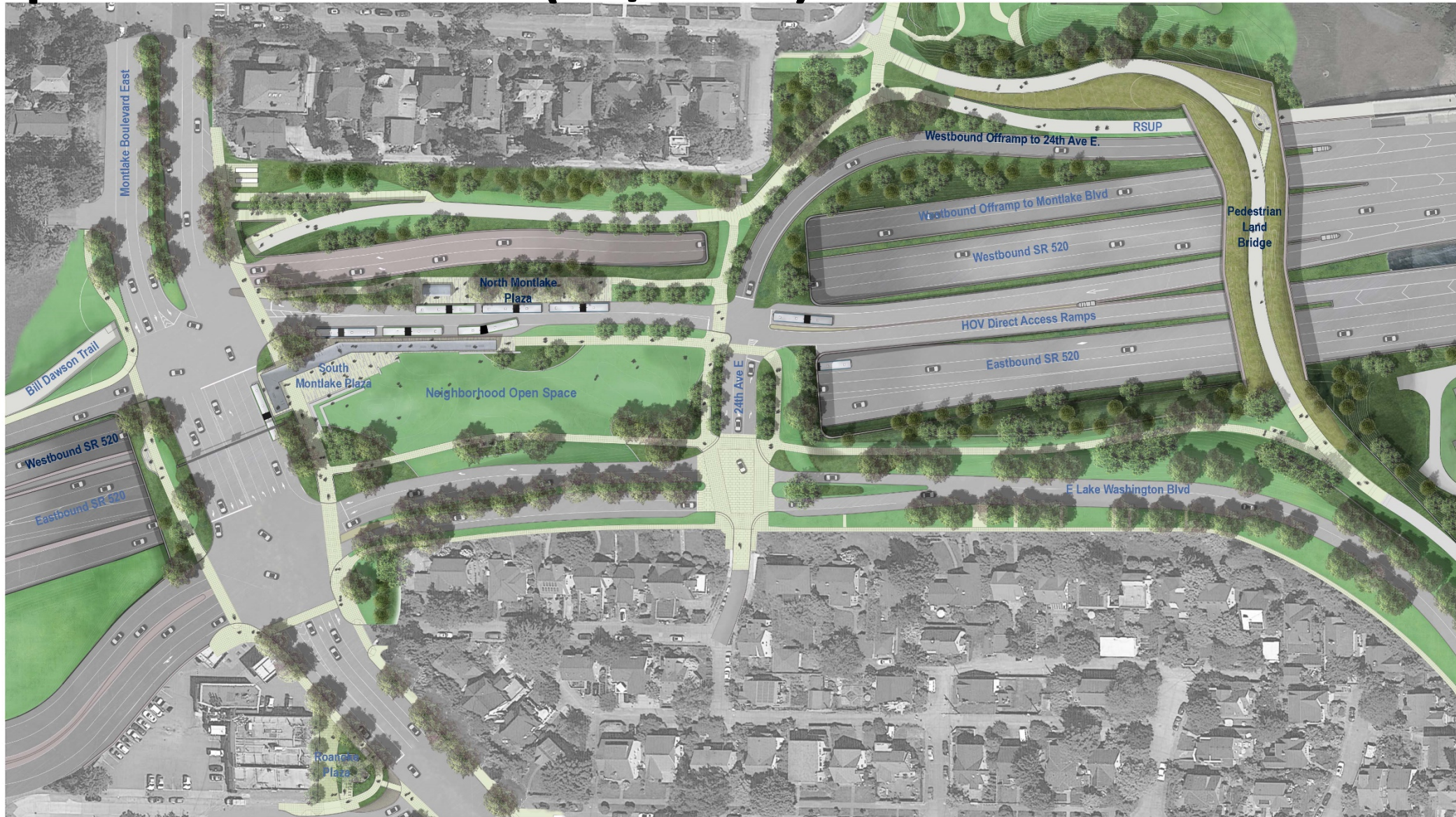
Exhibit 2.35-0: SR 520 program at full build-out illustrative plan



\* Possible future use of a portion of the NOAA property, approximating the area shown in the FEIS, for a public pedestrian-bike path is subject to agreement by NOAA as a part of ongoing mitigation discussion



# Response to RFP Plan (11/2018)





# Pedestrian Land Bridge

Concept Evolution

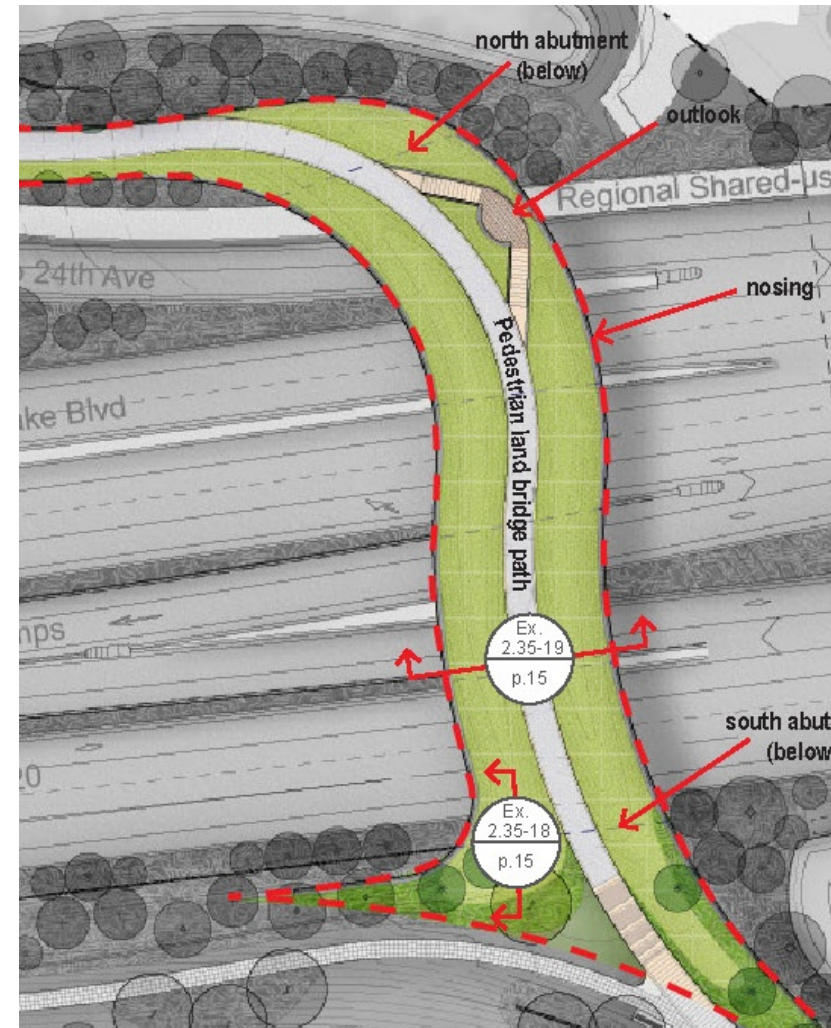
Key Plan



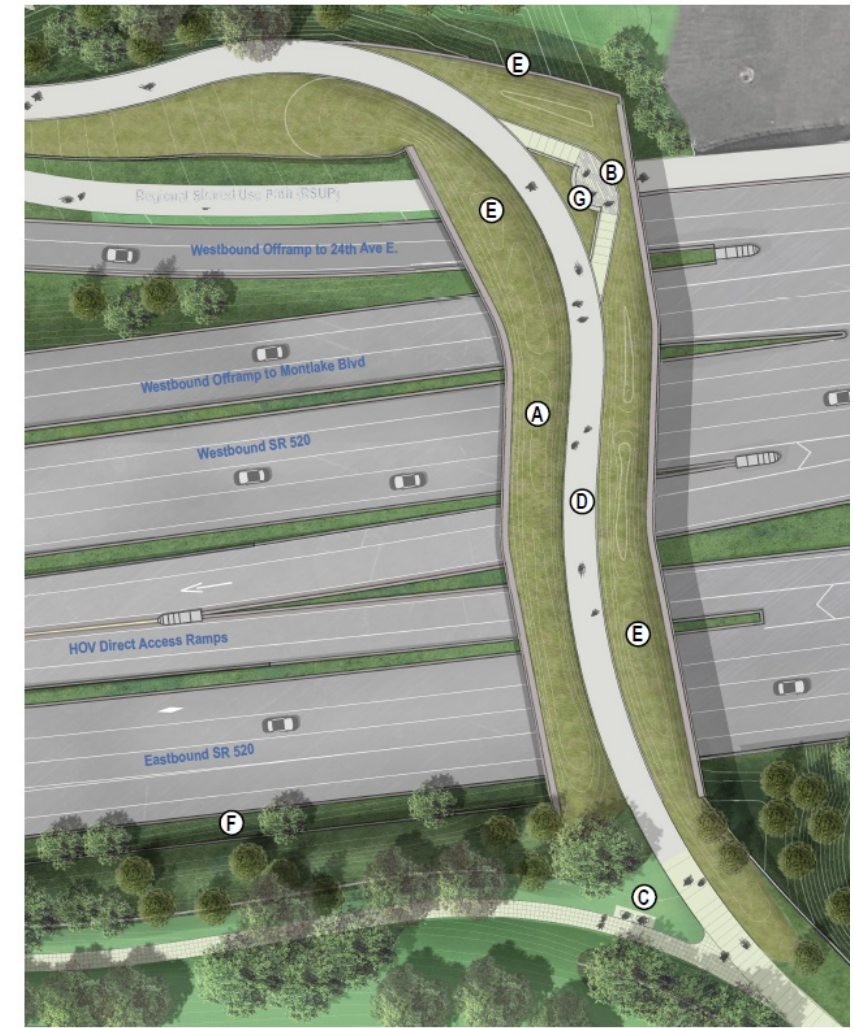
2016 Plan (WSDOT/SDC)



2018 WSDOT RFP Plan



Response to RFP Plan (11/2018)





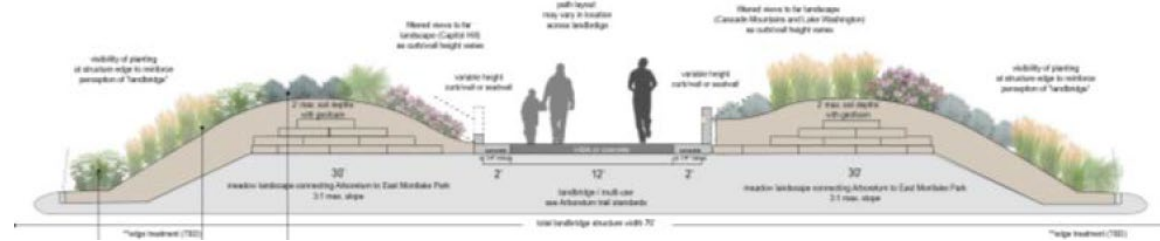
# Pedestrian Land Bridge

## Concept Evolution

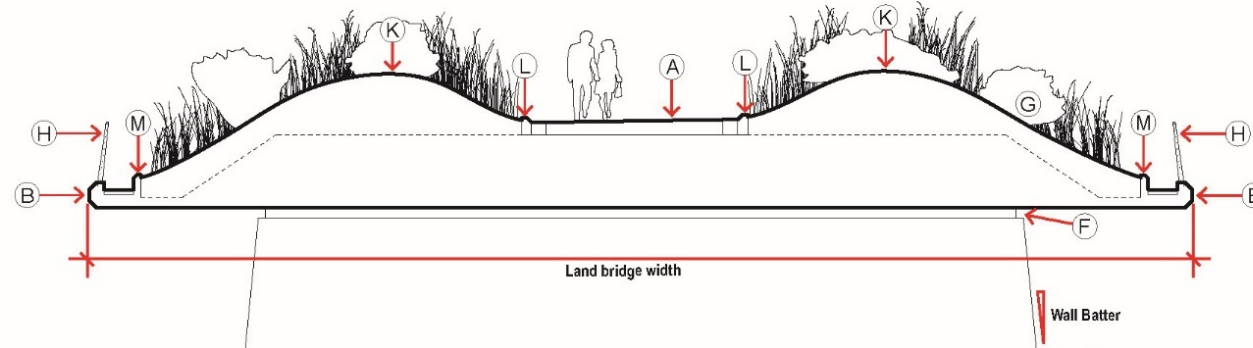
Key Plan



2016 Plan (WSDOT/SDC)



2018 WSDOT RFP Plan



Response to RFP Plan (11/2018)





# 2018 RFP Prescriptive Design Requirements: Materials





# Walls (2018 RFP)

## WALLS AND STRUCTURES GENERAL

	UDC Name	Pattern	Batter
	Roadside walls	FF-1	10:1 typ
	Pier Walls	FF-1	Vertical
	Portal Walls	FF-1, FF-3 along RSUP	10:1 typ
	Pedestrian Land Bridge	N/A	N/A
	Landscape and seat walls	FF-3	Vertical
	Community walls	FF-2	Vertical
	Noise Absorptive Lining	Perforated Steel	Vertical

Table L1-A: Wall types

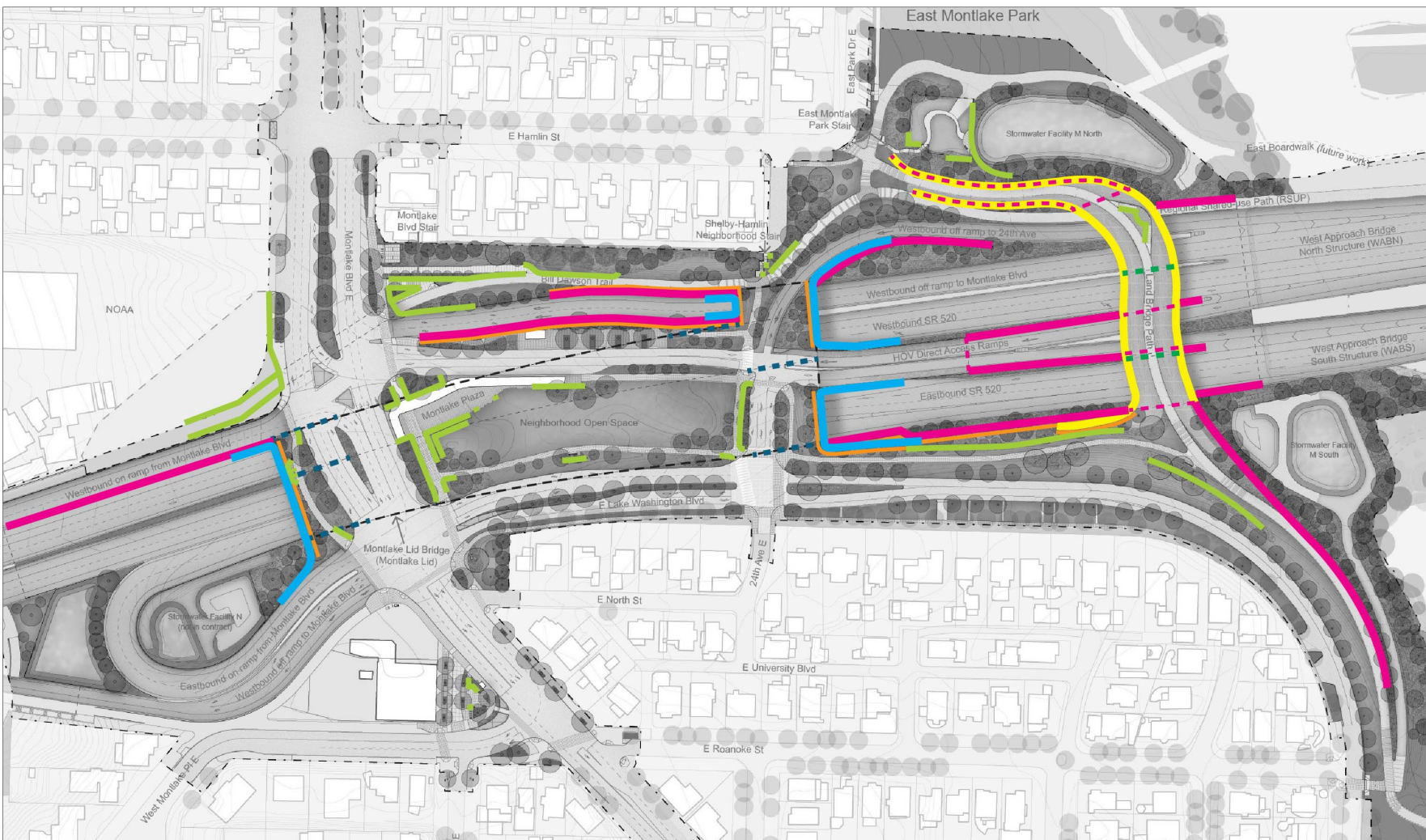


Exhibit 2.35-1: Walls and structure key plan





# Walls - Roadside (2018 RFP)

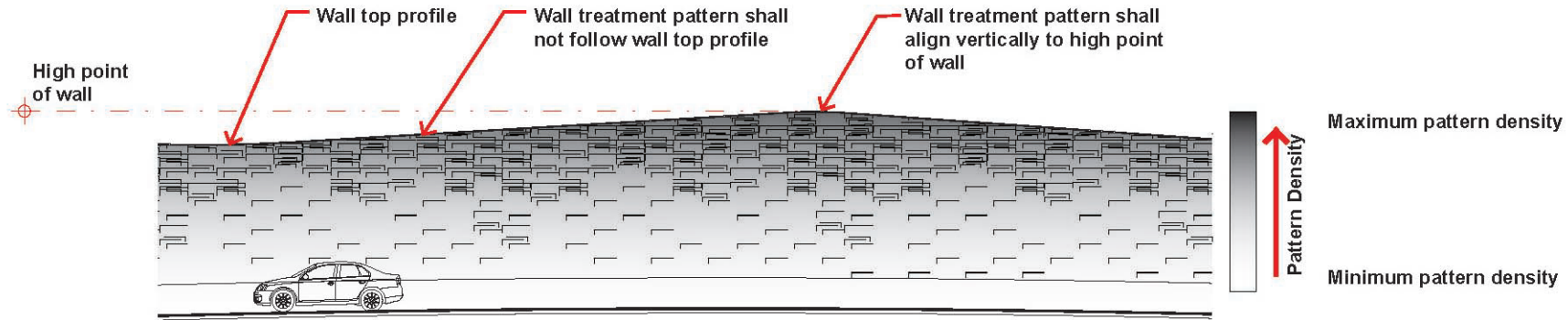


Exhibit 2.35-3: Gradient concept typical wall elevation

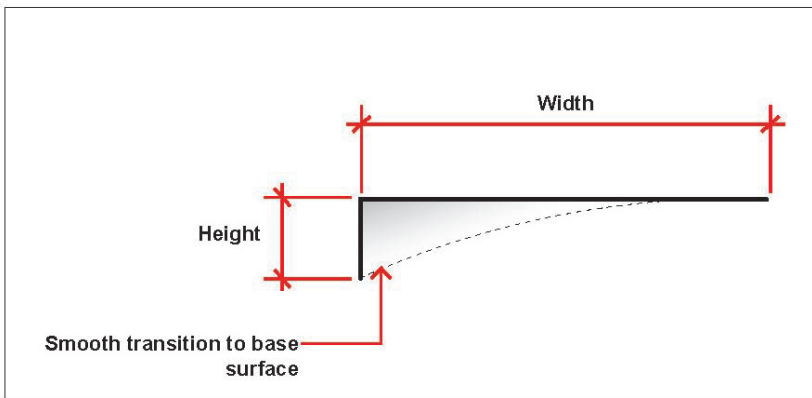


Exhibit 2.35-3A: FF-1 Upward facing striation elevation

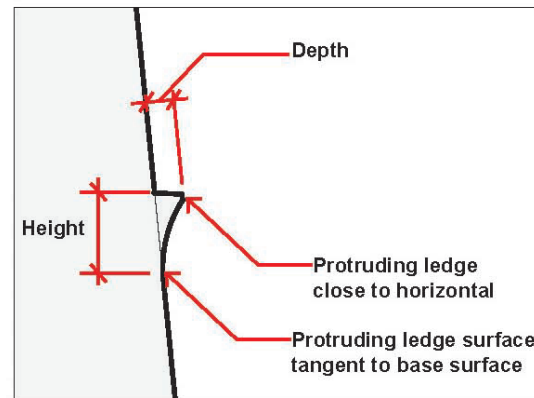


Exhibit 2.35-3B: FF-1 Upward facing striation section

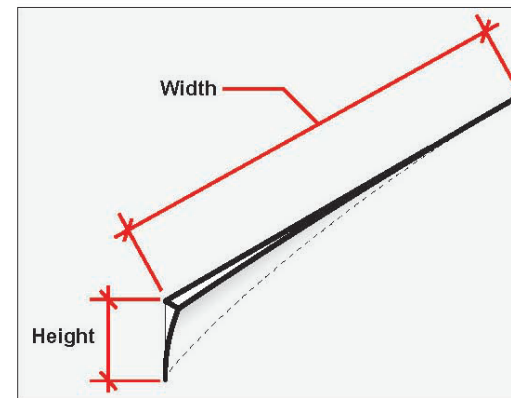


Exhibit 2.35-3C: FF-1 Upward facing striation axon

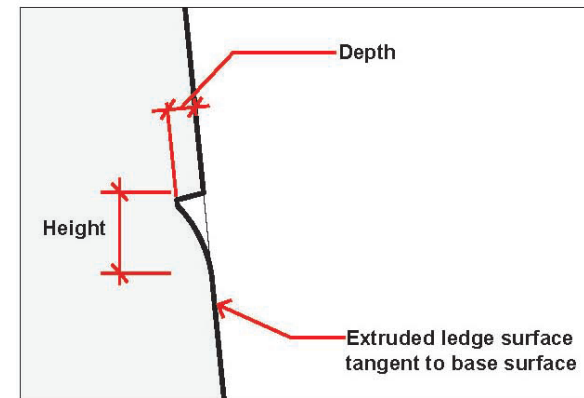


Exhibit 2.35-3D: FF-2 Concave depression section



# Walls - Landscape (2018 RFP)

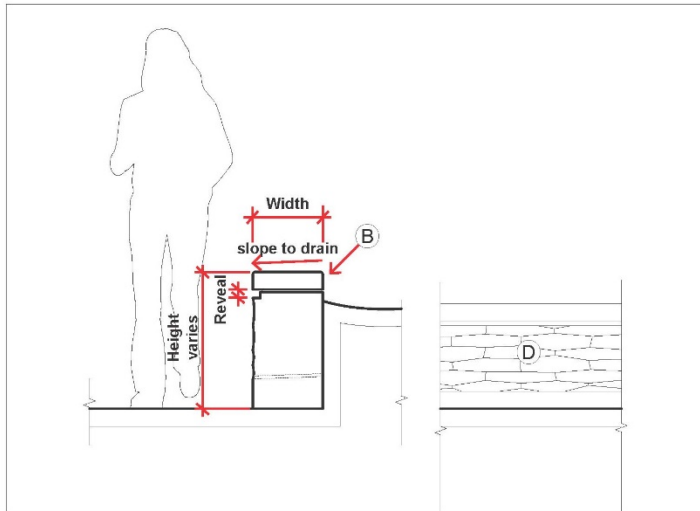


Exhibit 2.35-24: Landscape wall type 1 section and elevation

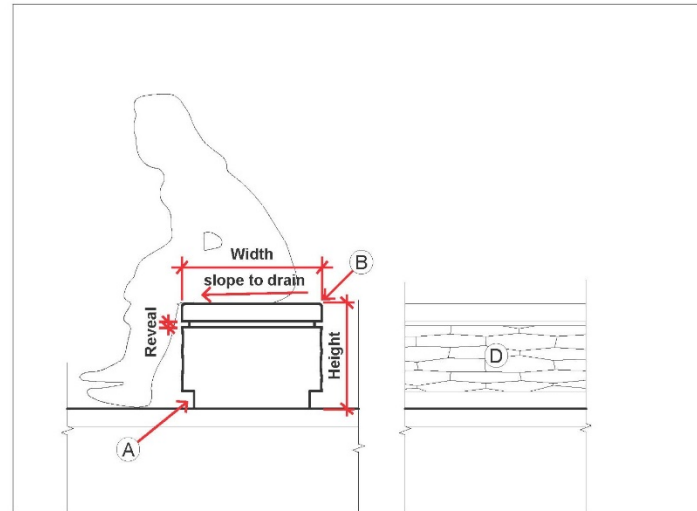


Exhibit 2.35-26: Seat wall type 1 section and elevation

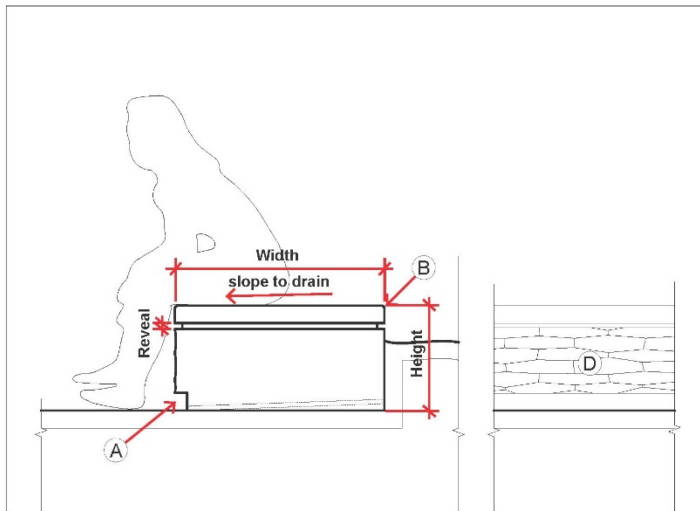


Exhibit 2.35-27: Seat wall type 2 section and elevation

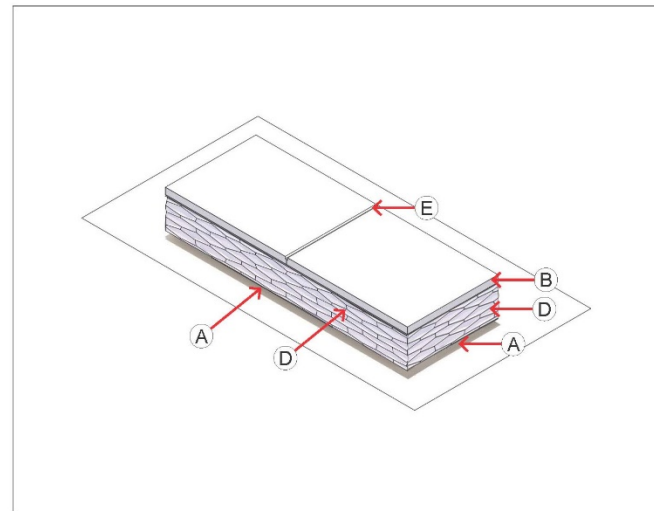


Exhibit 2.35-28: Seat wall type 1 axonometric view - flat end

## SECTION AND AXON CALLOUTS

- (A) 3" reveal at base
- (B) Precast concrete topper, Class 1 finish
- (C) 2" reveal at corner
- (D) FF-3
- (E) Skateboard deterrent



ADZ Wall Texture

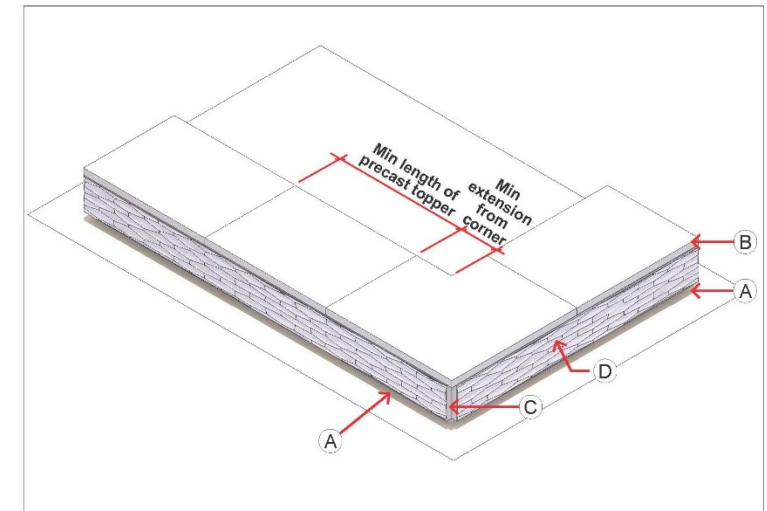
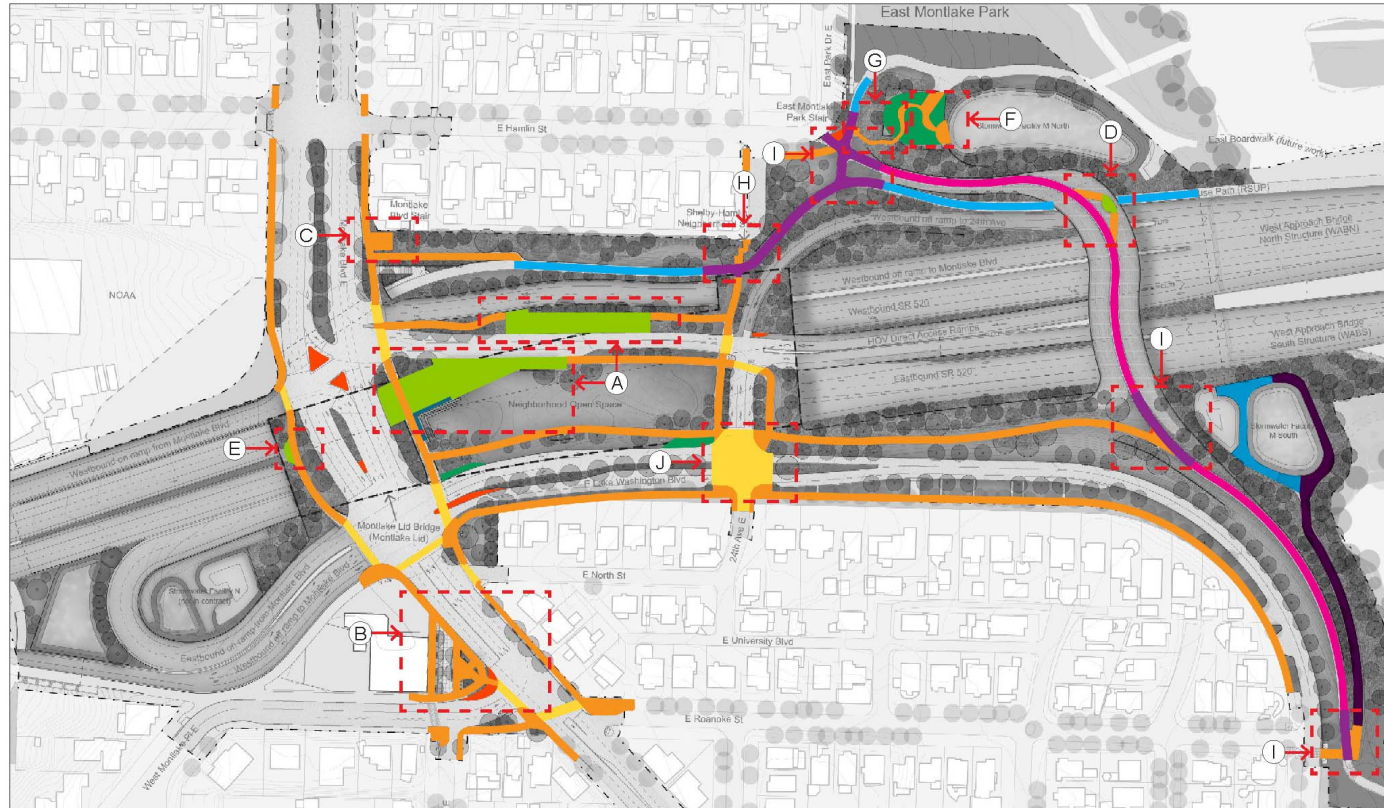


Exhibit 2.35-28A: Seat wall type 2 axonometric view - corner condition



# Paving (2018 RFP)



## NON-MOTORIZED PAVING GENERAL

Corresponding Channelization Plan Alignments	Urban Design Name
RSUP, BDT, Stormwater facility maintenance access roads	RSUP
VX	Pedestrian Land Bridge Path
DX sidewalks (both sides), HWDX sidewalks (both sides), FX sidewalks (both sides), WPXS sidewalks (both sides), Pedestrian access route to Montlake, E Hamlin St Sidewalk, RSUP connection path to Montlake Lid, QX sidewalks (both sides), Stormwater Vault Lid	Concrete Sidewalk
VX (as indicated in Exhibit 2.35-43 - 2.35-45), RSUP (as indicated in Exhibit 2.35-43)	Concrete Path Intersection
DX at DXW1, DX at DXE1 and EDX1, DX at QX1 (NS and EW), DX at WDX, DX at HWDX, DX at FX (NS and EW), FX at WPXS (all 4), HWDX at WPX (NS and EW)	Concrete Crosswalk
South Montlake Plaza	South Montlake Plaza
Stormwater Facility M South maintenance access road	Maintenance Access Road
Occurs throughout	Plaza/Outlook
Stormwater Vault/FX (north side) at WPXS and DX	Reinforced grass paving
DX, DX at FX, DX at QX1	Cobble style paving

Table L1-B: Civil and urban design alignment table

Exhibit 2.35-29: Non-motorized paving key plan

### PLAN CALLOUTS

- (A) Montlake Plaza
- (B) Roanoke Plaza
- (C) Canal Reserve Bike Plaza
- (D) Pedestrian Land Bridge Outlook
- (E) Portage Bay Outlook
- (F) E Montlake Park Outlook
- (G) E Montlake Park Stair

- (H) Shelby-Hamlin Neighborhood Stair
- (I) Path Intersections
- (J) Raised Intersection



# Paving (2018 RFP)

## NON-MOTORIZED PAVING DETAILS

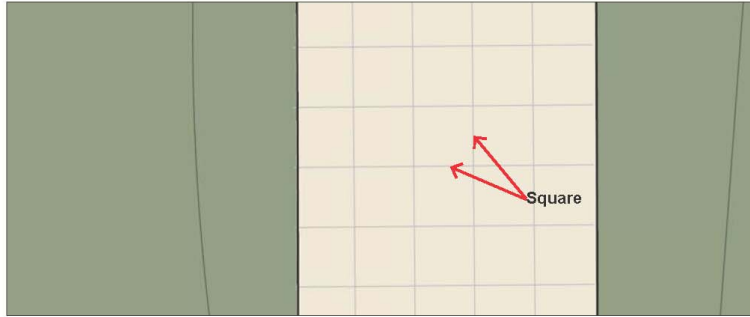


Exhibit 2.35-47: Sidewalk and crosswalk scoring detail plan

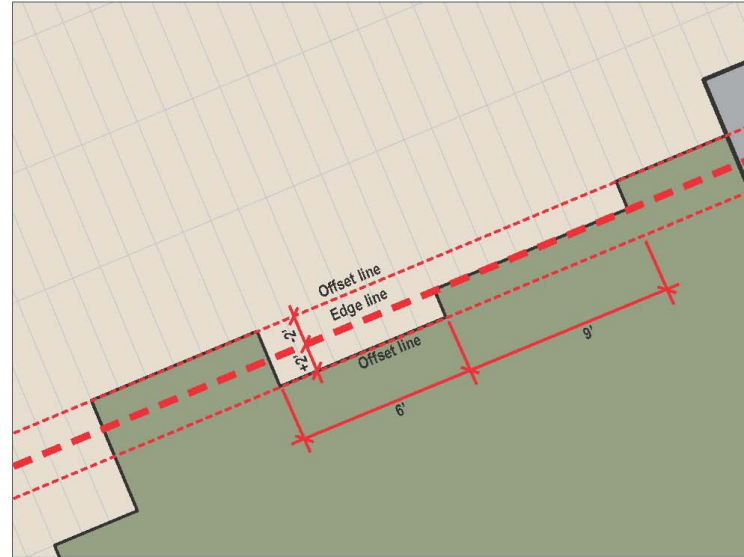


Exhibit 2.35-30: Montlake Plaza edge detail diagram

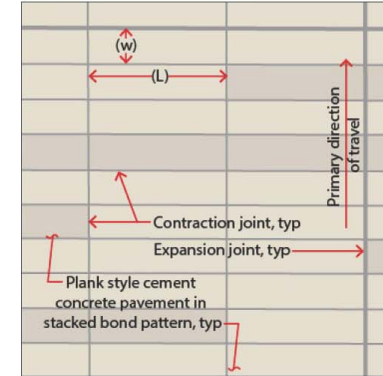


Exhibit 2.35-51: Concrete plank style pavement detail

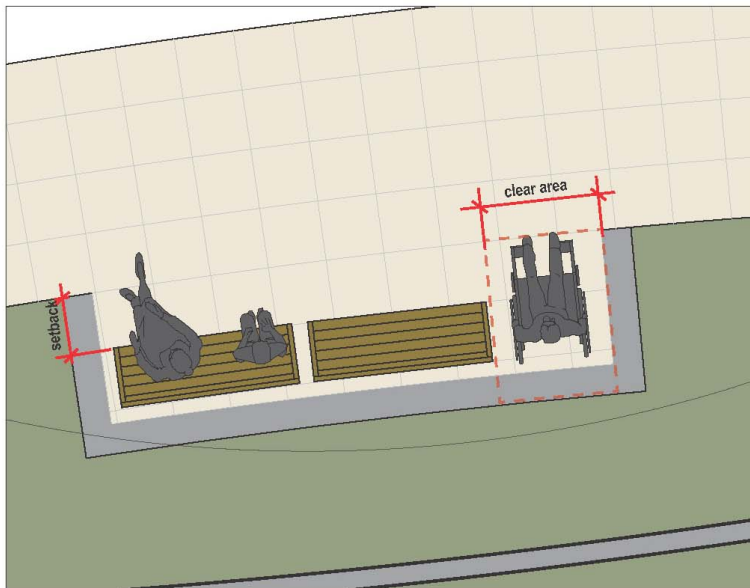
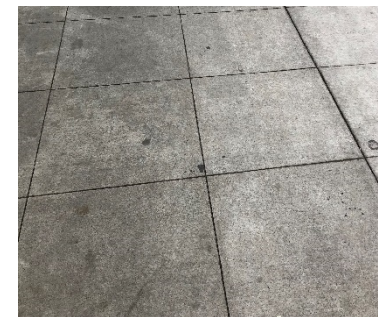
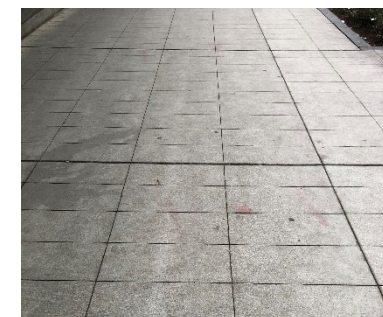


Exhibit 2.35-52: Bench area detail plan



City of Seattle standard 2'x2' scored concrete sidewalk



Similar scored concrete stacked bond plank pattern



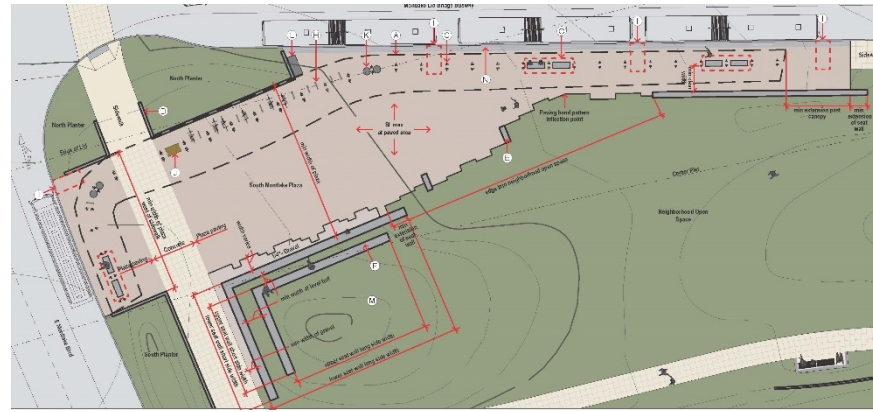
# Montlake Plaza

## Concept Evolution

2016 Plan (WSDOT/SDC)



2018 WSDOT RFP Plan



Response to RFP Plan (11/2018)





# Mixing Zones (2018 RFP)

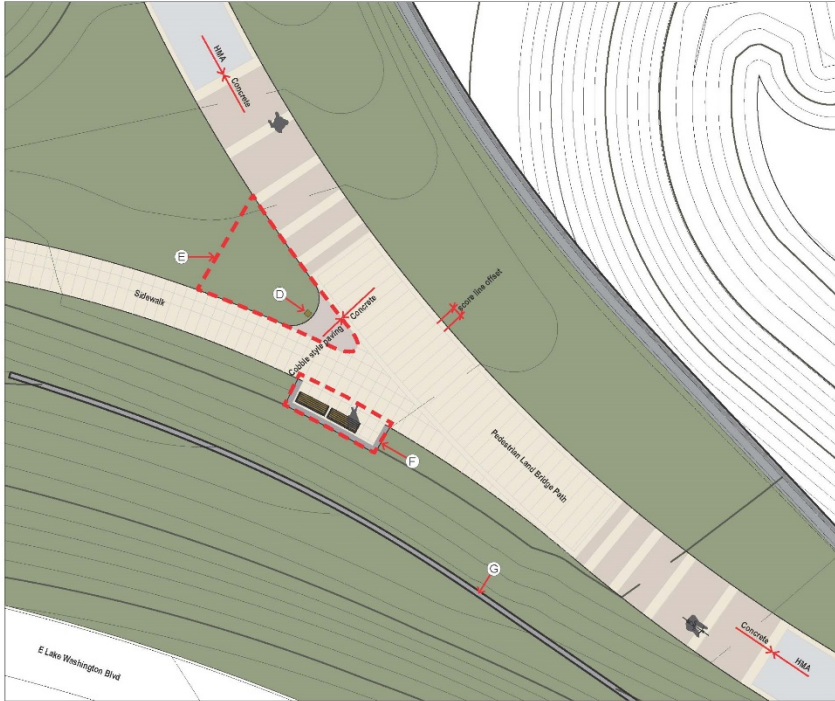


Exhibit 2.35-44: Arboretum path enlarged plan

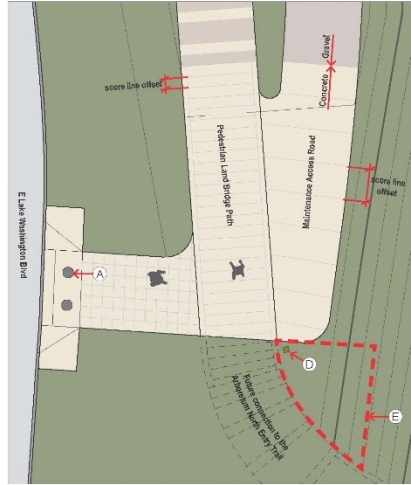


Exhibit 2.35-45: Pedestrian Land Bridge Path at stormwater maintenance access road enlarged plan

### PLAN CALLOUTS

- (A) Removable bollard
- (B) Drinking Fountain
- (C) Interpretive sign
- (D) Wayfinding/directional sign post
- (E) Zone for interpretive elements
- (F) Bench area detail, see Exhibit 2.35-52
- (G) Landscape wall type 1, see Exhibit 2.35-24

### PATH INTERSECTIONS

#### PLAN CALLOUTS

- (A) Removable bollard
- (B) Drinking Fountain
- (C) Interpretive sign
- (D) Wayfinding/directional sign post
- (E) Zone for interpretive elements
- (F) Bench area detail, see Exhibit 2.35-52
- (G) Landscape wall type 1, see Exhibit 2.35-24

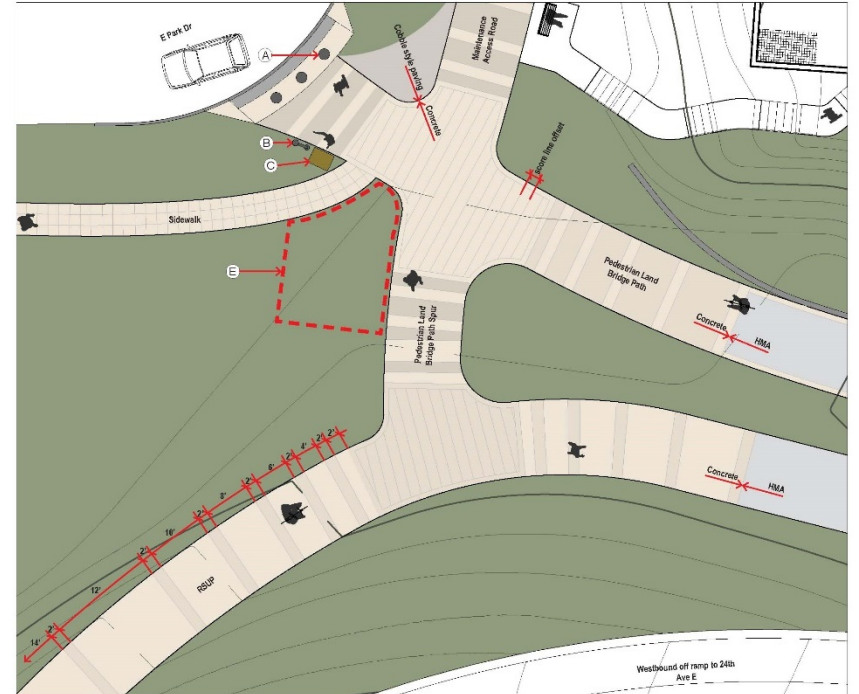


Exhibit 2.35-43: Pedestrian Land Bridge Path and RSUP intersection enlarged plan



# Overlooks (2018 RFP)

## LAND BRIDGE OUTLOOK

### PLAN CALLOUTS

- (A) Pedestrian railing type 2, see Exhibit 2.35-101
- (B) Pedestrian railing type 3, see Exhibit 2.35-102
- (C) Seat wall type 1, see Exhibits 2.35-26, 2.35-28
- (D) Landscape wall type 1, see Exhibit 2.35-24
- (E) Edge of Structure
- (F) Planting and Grading, see Exhibits 2.35-72, 2.35-89

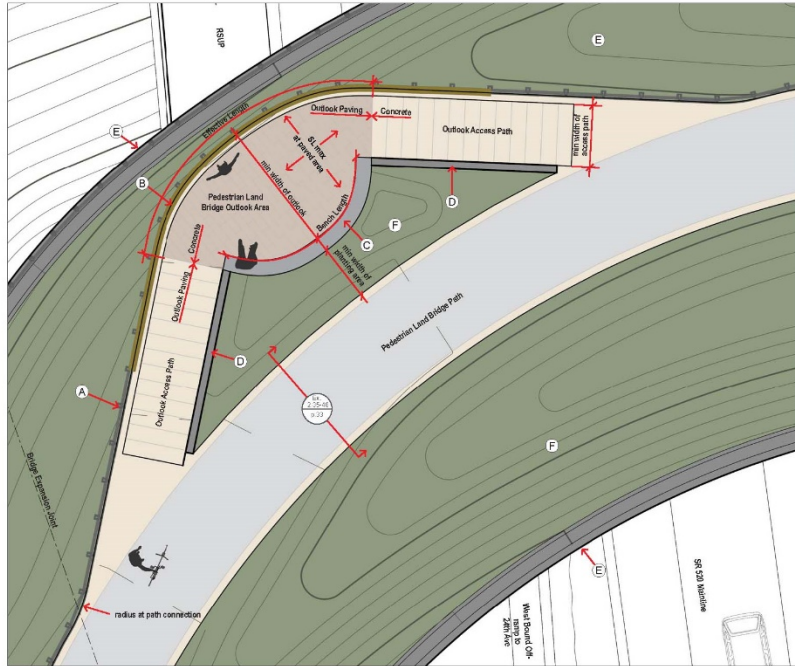


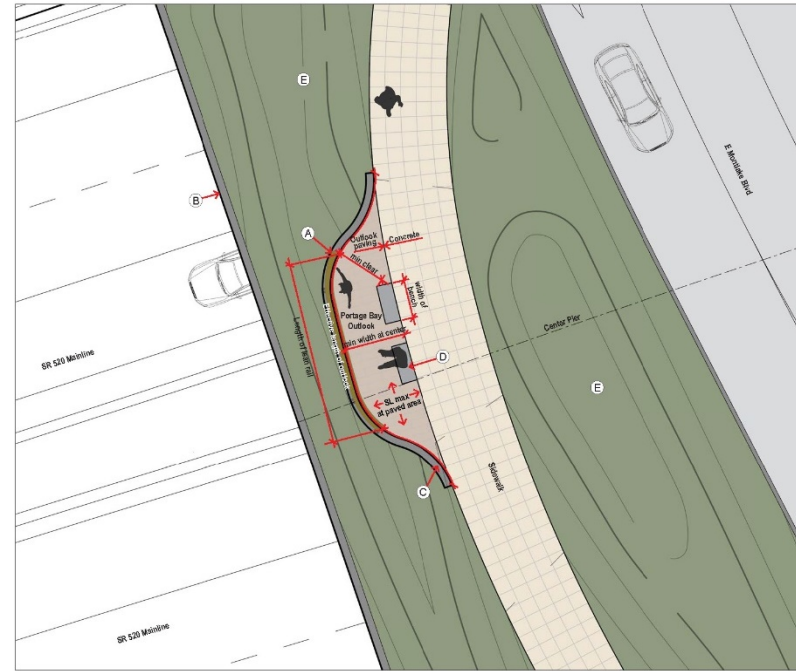
Exhibit 2.35-94. Pedestrian land bridge outlook enlarged plan

0

## PORTAGE BAY OUTLOOK

### PLAN CALLOUTS

- (A) Pedestrian railing type 3, see Exhibit 2.35-102
- (B) Portal wall, see Exhibits 2.35-7, 2.35-8, 2.35-9, 2.35-10, 2.35-11, 2.35-12, 2.35-13
- (C) Landscape wall type 1, 2' height max, see Exhibit 2.35-24
- (D) Seat wall type 1, see Exhibits 2.35-26, 2.35-28
- (E) Planting and Grading, see Exhibits 2.35-58, 2.35-59, 2.35-82, 2.35-83





# Urban Design Site Amenities: Site Furnishings (2018 RFP)

## SITE FURNISHINGS

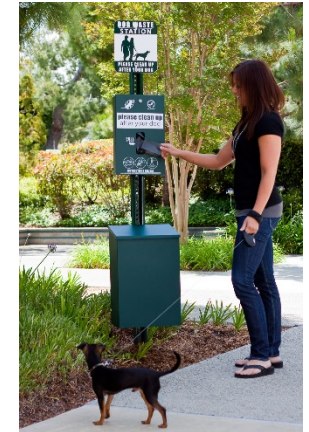


Exhibit 2.35-110: Site furnishings key plan

- 1939 New York World's Fair Bench
- Removable bollard
- Dog waste bag dispenser
- Drinking Fountain
- Interpretive element areas
- Trash/Recycling Receptacles



1939 NY World's Fair Bench



Standard Dog Waste Bag Dispenser



COS Standard Drinking Fountain



King County Metro Trash Receptacle



# Transit Shelters and Canopies (2018 RFP)

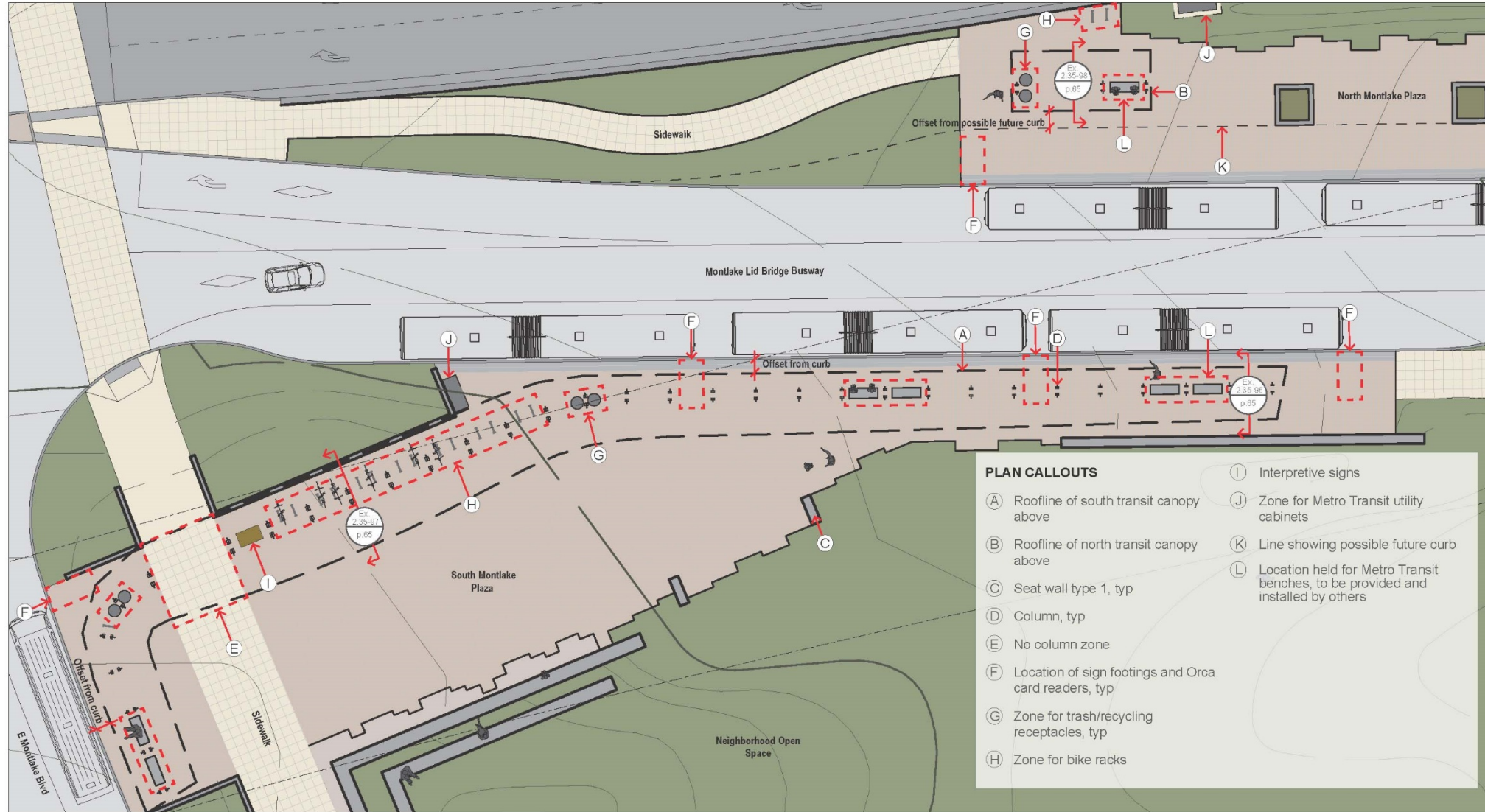


Exhibit 2.35-95: Transit canopies enlarged plan





# Transit Shelters and Canopies (2018 RFP)

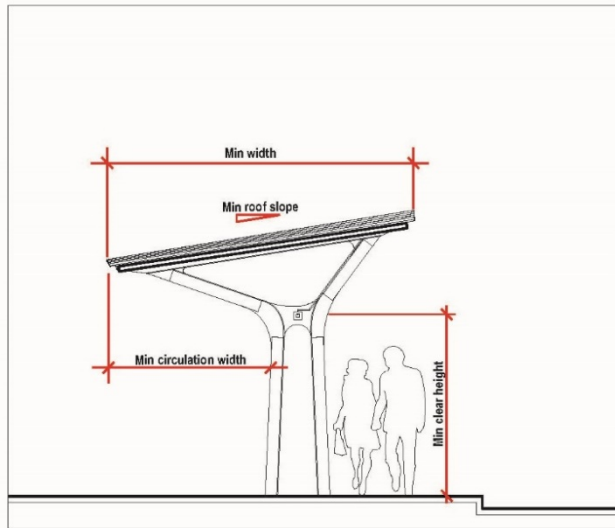


Exhibit 2.35-96: South transit canopy narrowest section

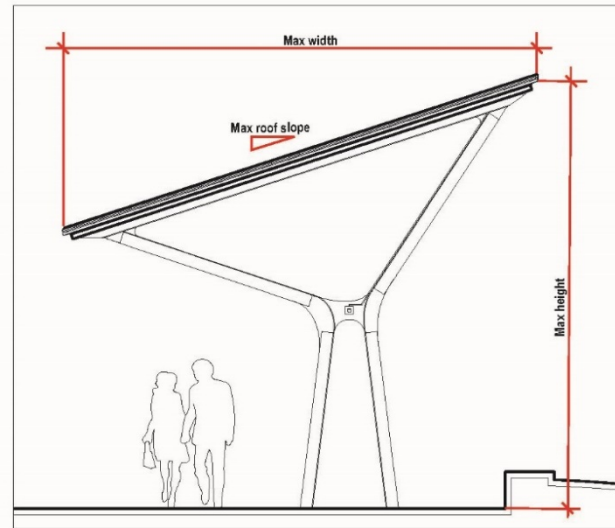


Exhibit 2.35-97: South transit canopy widest section

## SECTION CALLOUTS

- (A) Standing seam metal roof with neutral light gray finish, fascia to match, typ
- (B) SST gutter and downspout where occurs, typ
- (C) Up/down light fixture at each column, typ
- (D) Columns composed of built up steel members with "Montlake Black" finish, typ
- (E) Structural wood decking with clear finish, typ

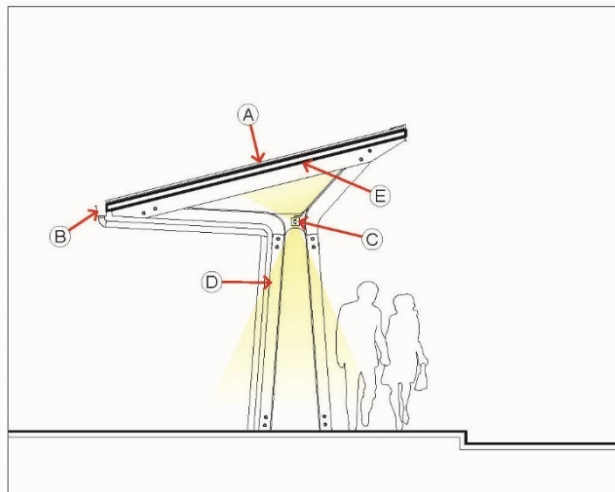


Exhibit 2.35-98: Transit canopies typical section and North Transit Canopy section

Transit canopy materials per RFP Technical Requirements:

- Canopy decking & framing, structural decking – wood
- Roof – standing seam metal, light gray finish
- Columns – steel with black finish



# Urban Design Site Amenities: Railings (2018 RFP)



Exhibit 2.35-99: Pedestrian railing key plan

## PLAN CALLOUTS

- (A) Shelby Hamlin Stair
- (B) E Montlake Park Stair

- Pedestrian Railing Type 1
- Pedestrian Railing Type 2
- Pedestrian Railing Type 3
- Pedestrian Railing Type 4
- WABN railing



# Urban Design Site Amenities: Railings (2018 RFP)

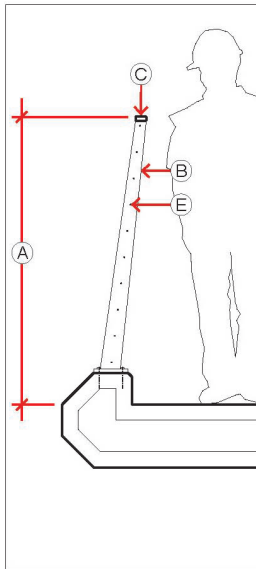


Exhibit 2.35-100: Pedestrian railing type 1 typical section

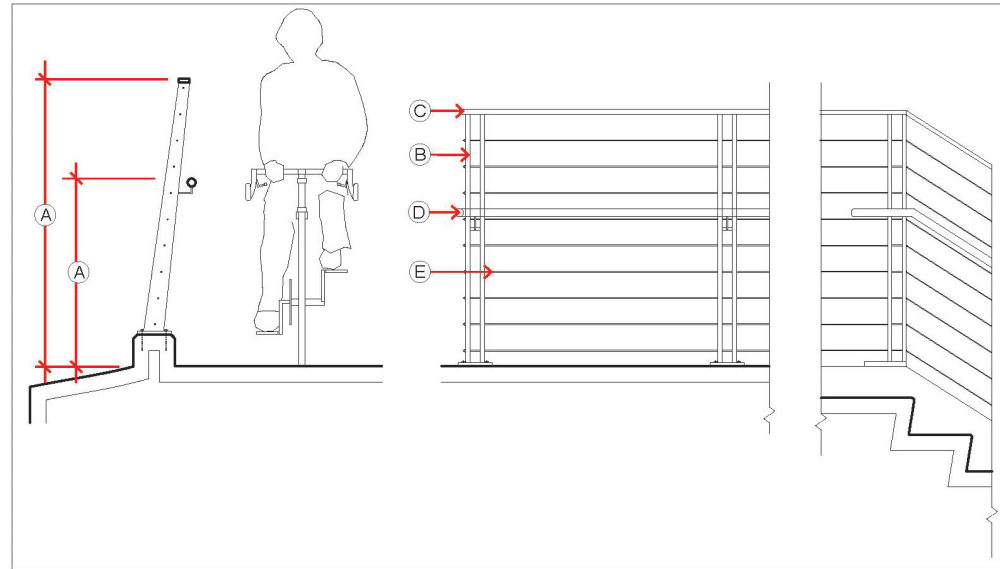


Exhibit 2.35-101: Pedestrian railing type 2 typical section and elevations

## SECTION AND ELEVATION CALLOUTS

- (A) Pedestrian railing and hand rail heights per WSDOT Design Manual, typ
- (B) Galvanized steel bar stanchions, typ
- (C) Galvanized steel top member, typ
- (D) SST hand rail, typ
- (E) SST cables, typ
- (F) Wood lean rail

Lean Rail top to be Forest Stewardship Council certified weather resistant hardwood

- Ipe
- Cumaru
- Teak

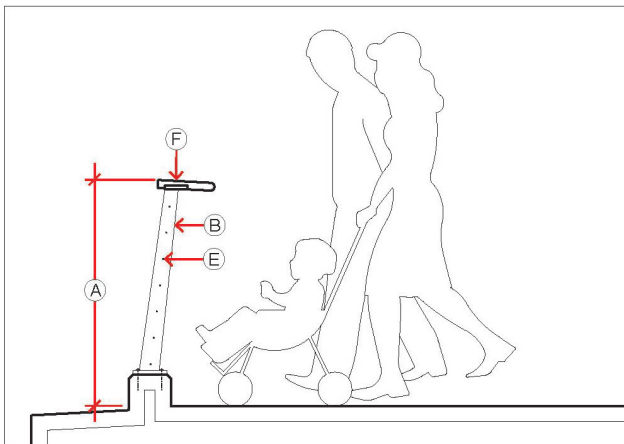


Exhibit 2.35-102: Pedestrian railing type 3 typical section

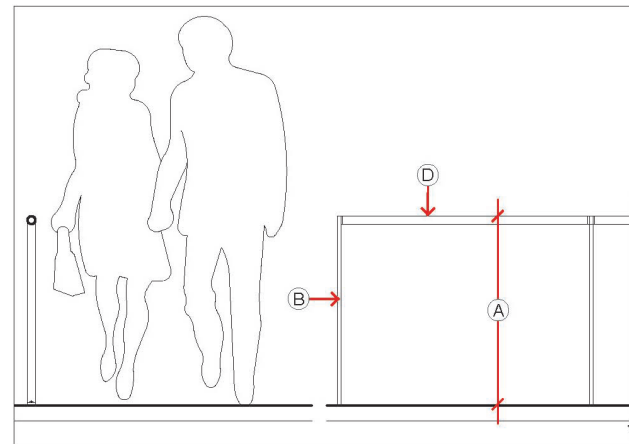


Exhibit 2.35-103: Pedestrian railing type 4 typical section and elevation








# Urban Design Site Amenities: Signage (2018 RFP)

## SIGNAGE, WAYFINDING, AND INTERPRETIVE ELEMENTS



Exhibit 2.35-106: Signage and wayfinding key plan

-  Post-mounted bicycle guide signs
-  Stone marker interpretive elements, see Exhibits 2.35-108 - Exhibit 2.35-109
-  Wayfinding/directional
-  Interpretive signage
-  Monotube sign structure



# Urban Design Site Amenities: Signage (2018 RFP)

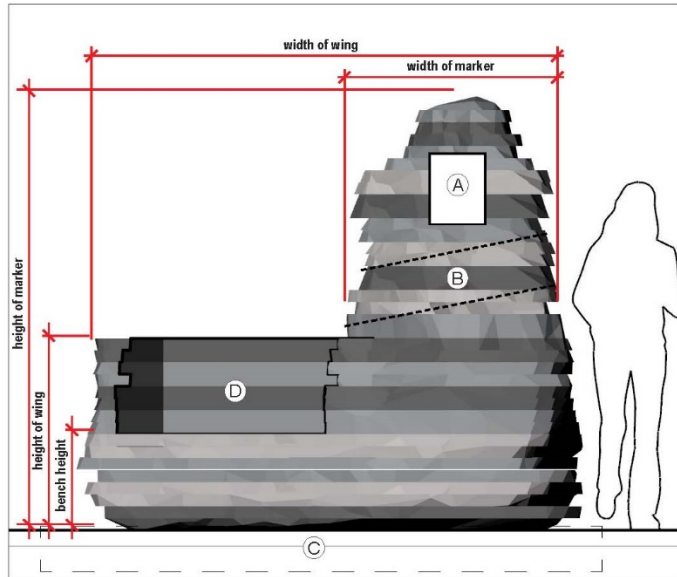


Exhibit 2.35-108: Cut stone marker A conceptual elevation

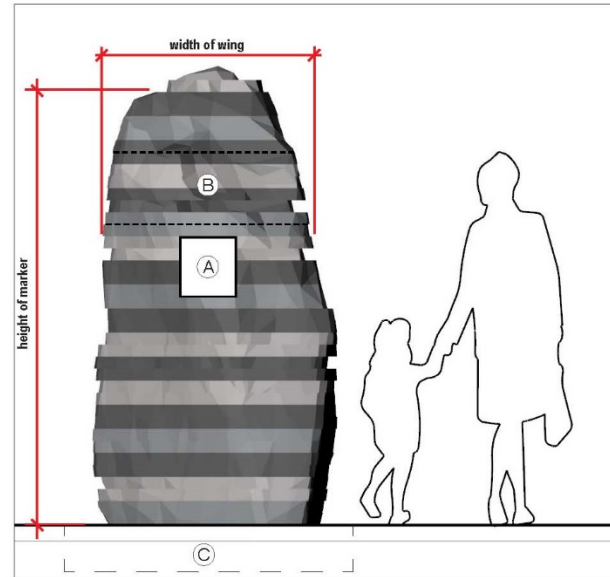


Exhibit 2.35-109: Cut stone marker B conceptual elevation

## ELEVATION CALLOUTS

- (A) Hole through stone
- (B) Line showing hole through stone in opposite direction
- (C) Footing
- (D) Integrated bench

## Arboretum and Interlaken Column References



## Two cut stone marker interpretive elements

- Locally available glacial erratic stone (naturally rounded basalt or granite boulder) in monolithic horizontal slices no more than 6 inches thick.

## Stone Marker 'A'

- 7 feet tall and 2 feet 6 inches depth
- 7 feet in length and a height of at least 3 feet tall, with a bench cut into the stone

## Stone Marker 'B'

- 7 feet tall and 2 feet 6 inches depth



# Planting (2018 RFP)

## PLANTING GENERAL

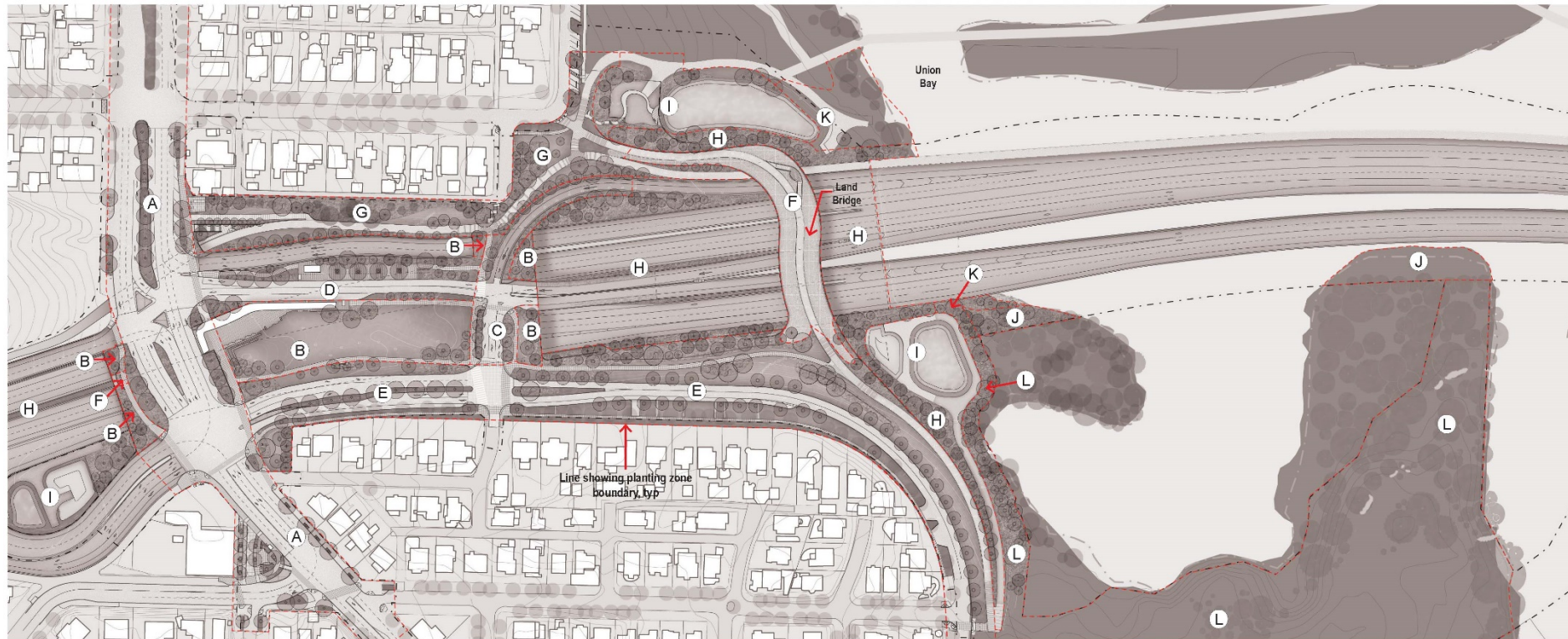


Exhibit 2.35-80: Montlake and vicinity planting zones key plan

### LANDSCAPE PLANTING ZONES

- (A) Montlake Boulevard East
- (B) Neighborhood open space
- (C) 24th Avenue East
- (D) Transit / Direct access
- (E) East Lake Washington Boulevard
- (F) Meadow
- (G) Old canal reserve
- (H) Green gateway

- (I) Stormwater facility
- (J) Forested wetland
- (K) Wetland and Shoreline Buffer / Upland Forest
- (L) Seeding, Fertilizing and Mulching (Low Grow Seed Mix)

Each Zone has a Detailed Plant List in the Conformed Document, Chapter 2






# ITS, Traffic, Signal, and Control Systems (2018 RFP)



Exhibit 2.35-111: Utility key plan

## PLAN CALLOUTS

- (A) WSDOT Roadway ITS and Illumination Cabinets and Vaults (New)
- (B) City of Seattle Signal Control and Power Cabinet(s) (New)
- (C) City of Seattle Signal Control and Power Cabinet (Existing)
- (D) WSDOT RSUP ITS, Illumination, and Power Cabinets and Vaults (New)
- (E) Alternate WSDOT RSUP ITS, Illumination, and Power Cabinets and Vaults Locations
- (F) Remote Annunciator Panel
- (G) King County Metro Transit Communications, Illumination, and Power Cabinets (New)
- (H) Co-located City Street Stormwater Vault(s) and Irrigation Control Cabinet(s) (New)
- (I) Under Lid and Transit/HOV Direct Access Area - WSDOT Tunnel Systems, Illumination and ITS Control Cabinets and Vaults. Alternate Location for WSDOT ITS, Illumination and Systems Control Cabinets and Vaults
- (J) City of Seattle Signal Control and Power Cabinet(s) and Alternative Irrigation Control Cabinets Location (New)
- (K) Collocated WSDOT ITS, Illumination, and Bridge Control System Cabinets and Vaults (Existing and New)
- (L) Collocated WSDOT ITS, Illumination, and Bridge Control System Cabinets, Vaults, and Backup Power System (New)
- (M) City of Seattle City Streets Stormwater Vault(s) (New)
- (N) Seattle City Light Service Transformer and Switchgear Cabinets and Vaults (New)

-  Utility box location zone - City/Metro transit
-  Utility box location zone - WSDOT
-  Below lid utility location zone

WSDOT new and reused signal cabinets and ITS cabinets/enclosures shall be:

- WSDOT-maintained areas: brushed stainless steel finish
- City of Seattle-maintained areas: powder coated to match Federal Standard Color 595 FS17038 (black)



# Lighting (2018 RFP)

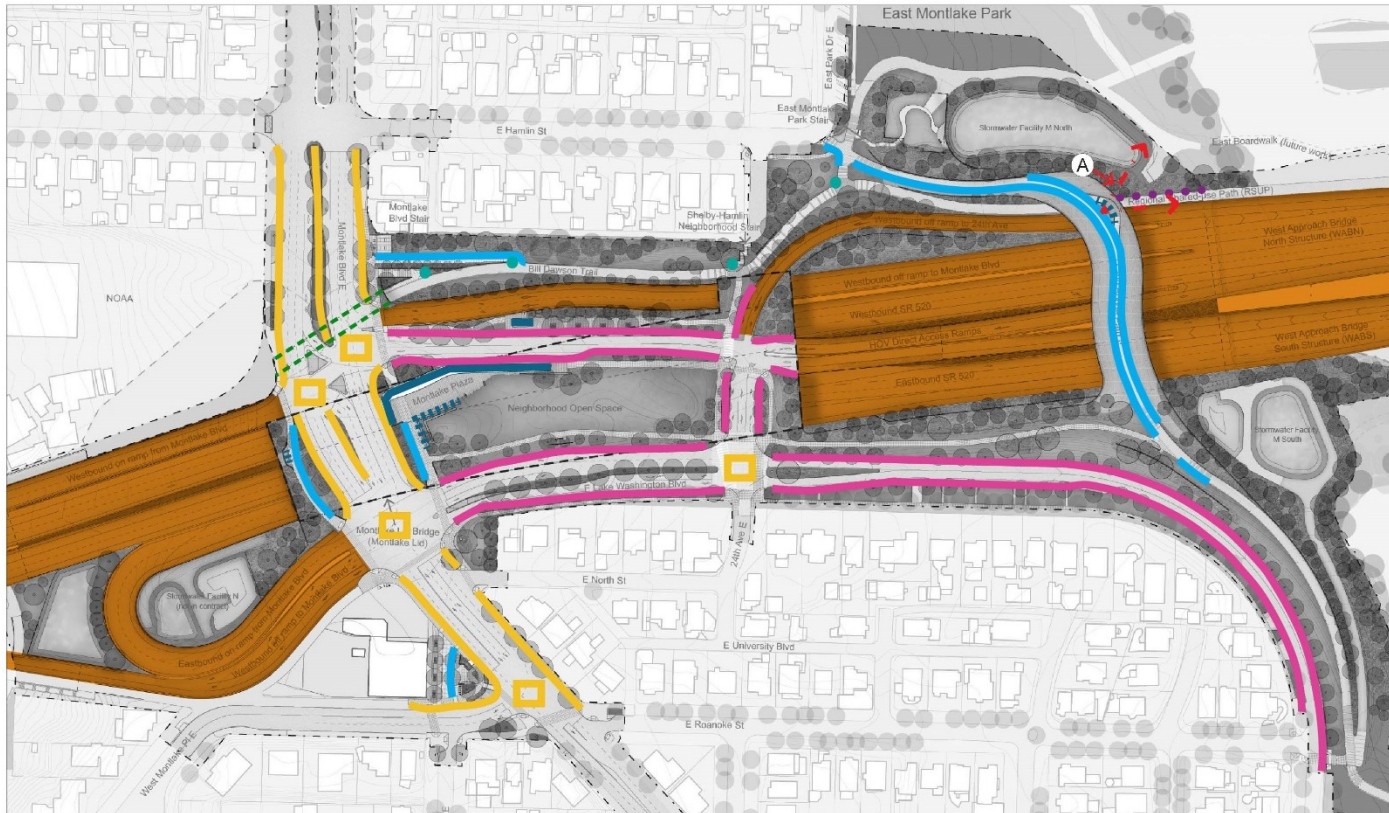
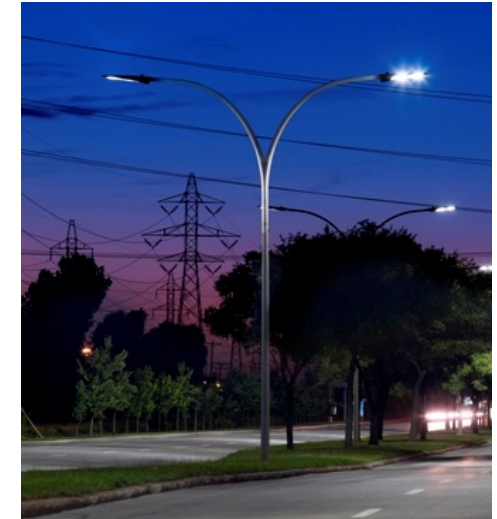


Exhibit 2.35-104: Lighting key plan

- WSDOT standard cobra head fixture
  - Cobra head fixture
  - Domus 50 fixture
  - Marina post top fixture
  - Canopy lighting, see Exhibit 2.35-98
  - WSDOT Regional Trail Light
  - WABN railing kick plate lighting, see Appendix AB drawing A3.02
  - RSUP Tunnel Lighting
- PLAN CALLOUTS**
- (A) Min clear area from Pedestrian Land Bridge Outlook



WSDOT Standard Cobra Head Fixture



Cobra Head Fixture



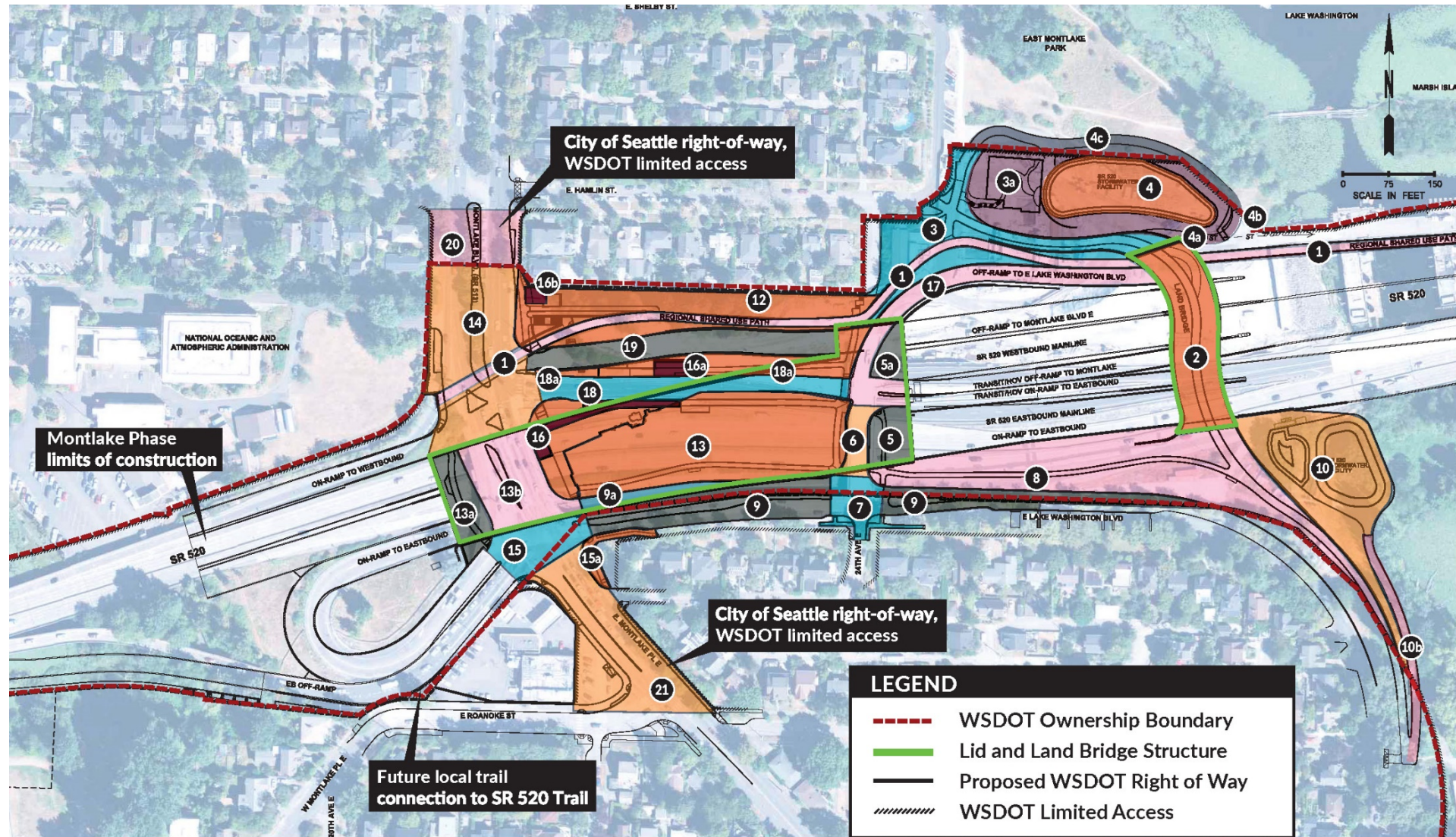
Domus 50 Fixture



Marina Post Top Fixture



# Maintenance and Operations Areas Responsibilities (2018 RFP)





# Proposed Timeline for SDC Formal Review

- **SDC Review #1 – February 21**
- **SDC Review #2 – May 2019**
  - Lid, Streetscape, Drainage Area, and Transit Shelter Design Packages 1 & 2
  - Pedestrian Land Bridge Update
  - Interpretive and Wayfinding
- **SDC Review #3 – August 2019**
  - Pedestrian Land Bridge
  - Foster Island Restoration
  - Trails



# Next...

- **Topical Meetings/Over-the-shoulder Review**
- **Nature Meets City Refinement**
  - Pedestrian Land Bridge
  - Lid Open-Space
  - Regional Shared Use Path (RSUP)
  - Freeway Corridor Landscape and Wall Treatments
  - Neighborhood Connections
- **Stormwater Facilities and their Relationship to Shoreline and Open Space**
- **Seattle Design Commission Meeting in May**



# Discussion

