

Elliott Bay Seawall Project

Waterfront Seawall Review Panel April 14, 2011

Project Area

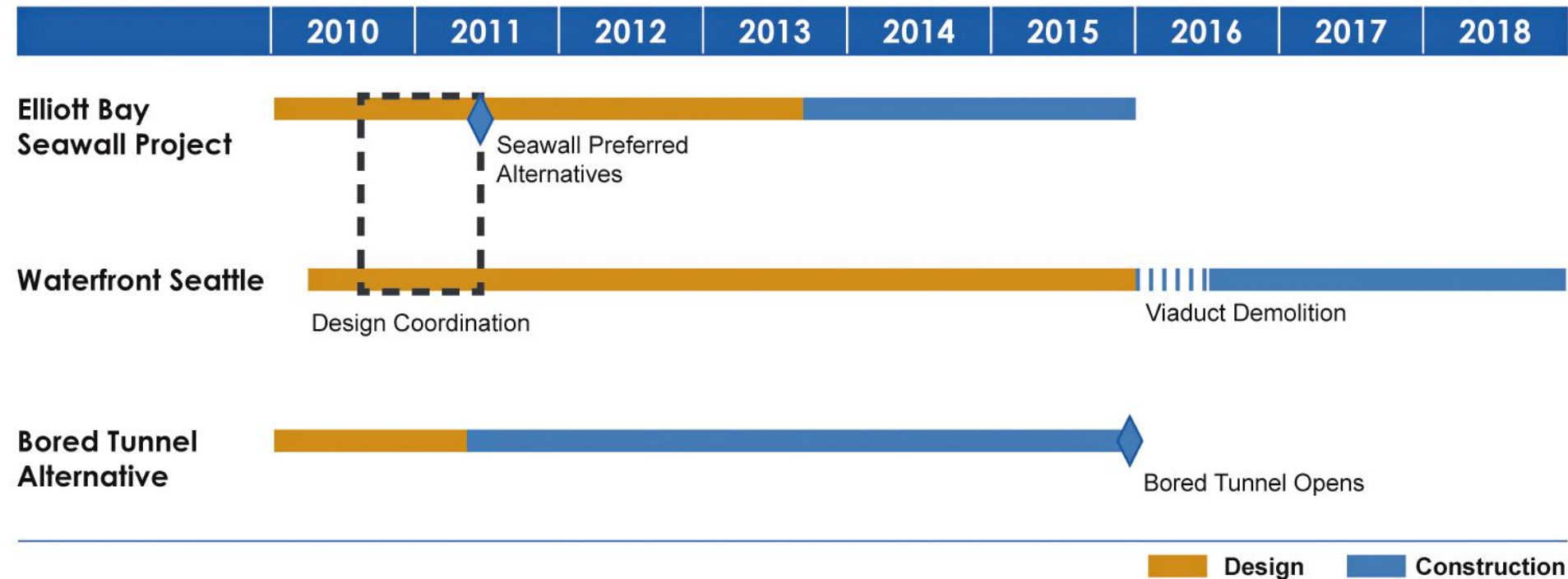


A Reminder: What's at Risk?

- Public safety
- Transportation corridor
- Critical utilities
- Residential and commercial structures
- Public recreation
- Tourism and local attractions
- Seattle's front porch



Project Schedule



Waterfront Coordination

Work to date:

- Held weekly design coordination meetings/working sessions
- Collaborated with CWC subcommittees
- Convened joint stakeholders group
- Developed “bookend” alternatives to maintain flexibility
- Drafted integrated outreach plan

Next steps:

- Continue design and outreach coordination and integration

Waterfront
Seattle.org

Environmental Impact Statement (EIS)

Spring (June) 2010	Winter 2011*	Spring 2011	Fall 2011	TBD**	TBD**	TBD**
Define project's Purpose and Need	<i>Establish range of alternatives for analysis</i>	<i>Write environmental discipline reports for alternatives</i>	<i>Summarize discipline reports into Draft EIS</i>	Publish Draft EIS	Publish Final EIS	Issue Record of Decision

**April—Define local alternatives*

***Pending schedule coordination with U.S. Army Corps of Engineers*

Project Goals

- Address critical structural public safety needs at shoreline.
- Respect cultural, archeological, and historic resources.
- Consider long-term vision for the Central Waterfront.
- Provide enhanced habitat and environmental quality.
- Provide enhanced public gathering and recreational opportunities.
- Support economic vitality of the waterfront.
- Minimize cumulative construction impacts.
- Support fiscal responsibility.

Developing Alternatives

Seawall Team Working in Parallel

U.S. Army Corps of Engineers



Waterfront Seattle Team



Public

***Establish
Range of
Alternatives***

Working with the Army Corps

The City of Seattle and the U.S. Army Corps of Engineers share the goal of addressing the critical safety need of the seawall.

- The City of Seattle's proposed schedule to advance construction of the central waterfront portion of the seawall would require special Congressional authorization, and is subject to the availability of funding.
- The Corps of Engineers has not approved these alternatives. The Corps will continue to work with the City and incorporate stakeholder comments into the alternatives, where appropriate.



**US Army Corps¹⁰
of Engineers®**

Working with Waterfront Seattle

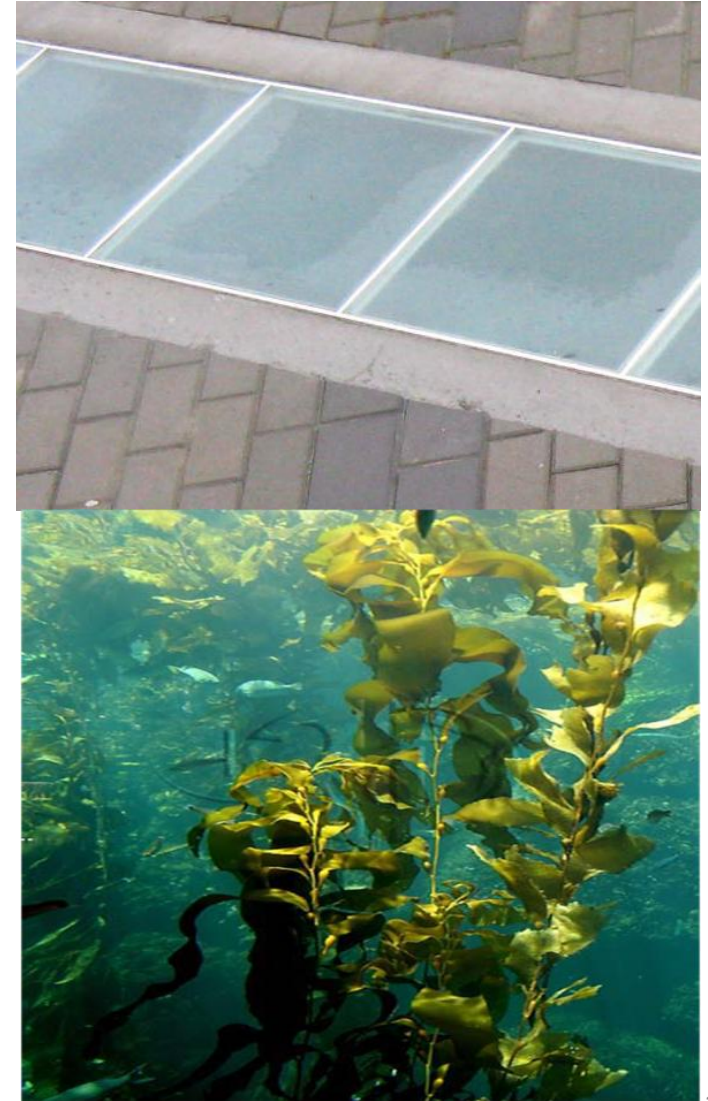


Working with the Public

- For those most affected, *the project is well-known*
- *Seize the habitat opportunity* by using innovative and science-based enhancements
- Maintain a *responsible project budget*
- Create more *physical access to water* and public gathering space
- Maintain transportation routes, including *continuous non-motorized pathways*
- Consider *construction impacts to businesses* and tourism
- Preserve *historical and cultural significance*

Elements of an Alternative

- Wall location
- Habitat enhancement measures
- Restored roadway and pedestrian/bicycle facilities
- Flexibility for Waterfront Seattle
- Potential early wins, both in-water and uplands



Comparing Alternatives

		Alternative	Zone 6 North Pier	Zone 5 Bell Harbor	Zone 4 Park/Aquarium	Zone 3 Commercial Piers	Zone 2 Ferry Terminal	Zone 1 Pioneer Square	
Wall Location	Ex		0'	0'	0'	0'	0'	0'	
	A		-9'	-9'	-9'	+3'	-15'	0'	
	B		-9'	-9'	-75'	-30'	-15'	-15'	
Nearshore Habitat	Aquatic	Ex	Minimal habitat	Habitat bench	Minimal habitat	Minimal habitat	Minimal habitat	<ul style="list-style-type: none"> Minimal habitat Advantageous bathymetry 	
		A	<ul style="list-style-type: none"> Cobble reef Substrate enhancement Habitat bench Light penetrating surface 	<ul style="list-style-type: none"> Habitat bench improvement Light penetrating surface 	<ul style="list-style-type: none"> Cobble reef Substrate enhancement Habitat bench Light penetrating surface 	<ul style="list-style-type: none"> Habitat bench Light penetrating surface 	<ul style="list-style-type: none"> Habitat bench Light penetrating surface 	<ul style="list-style-type: none"> Cobble reef Substrate enhancement 	
		B	Same as A	Same as A	Same as A with: <ul style="list-style-type: none"> Natural light Intertidal zone 	Same as A	Same as A	Same as A with: <ul style="list-style-type: none"> Improved habitat Intertidal zone Light penetrating surface 	
	Riparian	Ex	none	none	none	none	none	none	none
		A	Base planting	Base planting	Base planting	Base planting	Base planting	none	Base planting
		B	Additional planting opportunities	Additional planting opportunities	Additional planting opportunities	Additional planting opportunities	Additional planting opportunities	none	Additional planting opportunities
	Restored Public Amenities	Ex	<ul style="list-style-type: none"> Sidewalk 	<ul style="list-style-type: none"> Sidewalk Multi-use trail Public short-stay marina 	<ul style="list-style-type: none"> Sidewalk Multi-use trail Waterfront Park Pier 62/63 	<ul style="list-style-type: none"> Sidewalk Multi-use trail 	<ul style="list-style-type: none"> Sidewalk Multi-use trail Public ferry terminal 	<ul style="list-style-type: none"> Sidewalk Multi-use trail Washington St Boat Landing 	
		A	<ul style="list-style-type: none"> Restored sidewalk Potential early wins 	<ul style="list-style-type: none"> Restored sidewalk Restored multi-use trail Public short-stay marina Potential early wins 	<ul style="list-style-type: none"> Restored sidewalk Restored multi-use trail Waterfront Park (existing) Pier 62/63 (existing) Potential early wins 	<ul style="list-style-type: none"> Restored sidewalk Restored multi-use trail Potential early wins 	<ul style="list-style-type: none"> Restored sidewalk Restored multi-use trail Public ferry terminal Potential early wins 	<ul style="list-style-type: none"> Restored sidewalk Restored multi-use trail Restored Washington St Boat Landing Potential early wins 	
		B	Same as A	Same as A	Same as A	Same as A	Same as A	Same as A	Same as A



WORKING DRAFT



existing seawall

WORKING DRAFT

Elliott Bay  Seawall
Project



alternative A

WORKING DRAFT

Elliott Bay  Seawall Project



alternative B

WORKING DRAFT

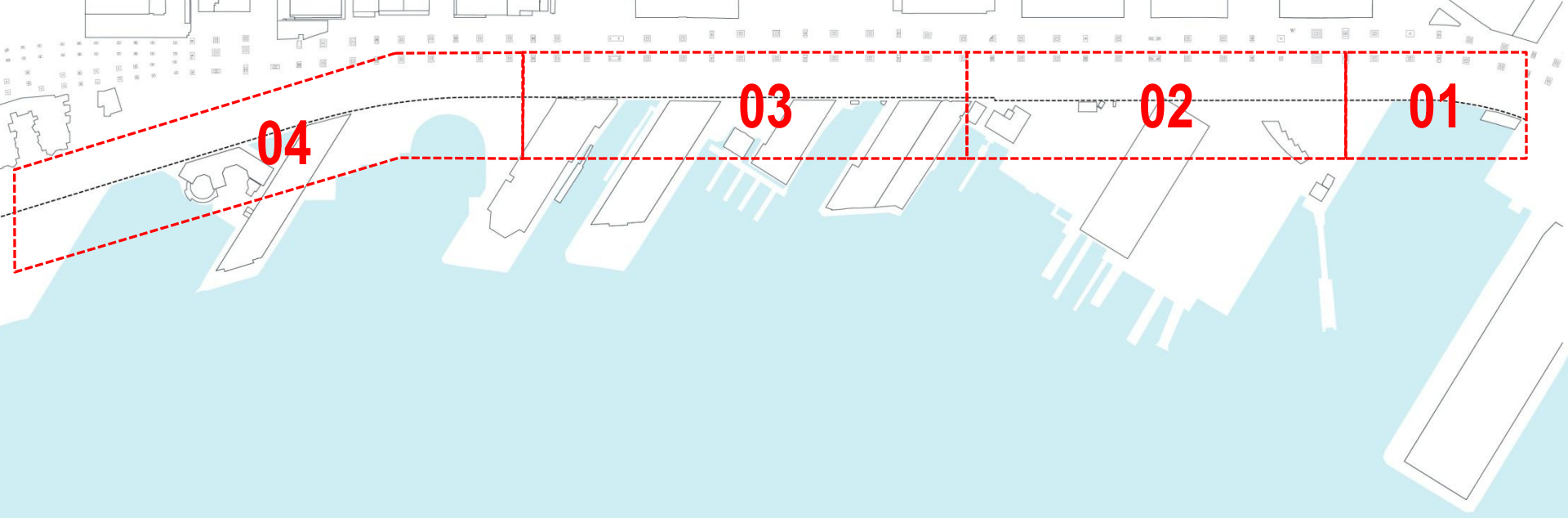
Elliott Bay  Seawall Project



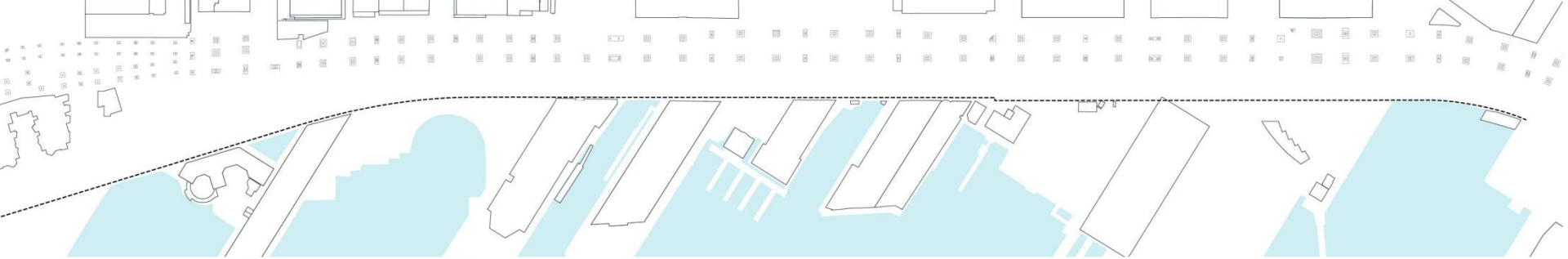
WORKING DRAFT



WORKING DRAFT



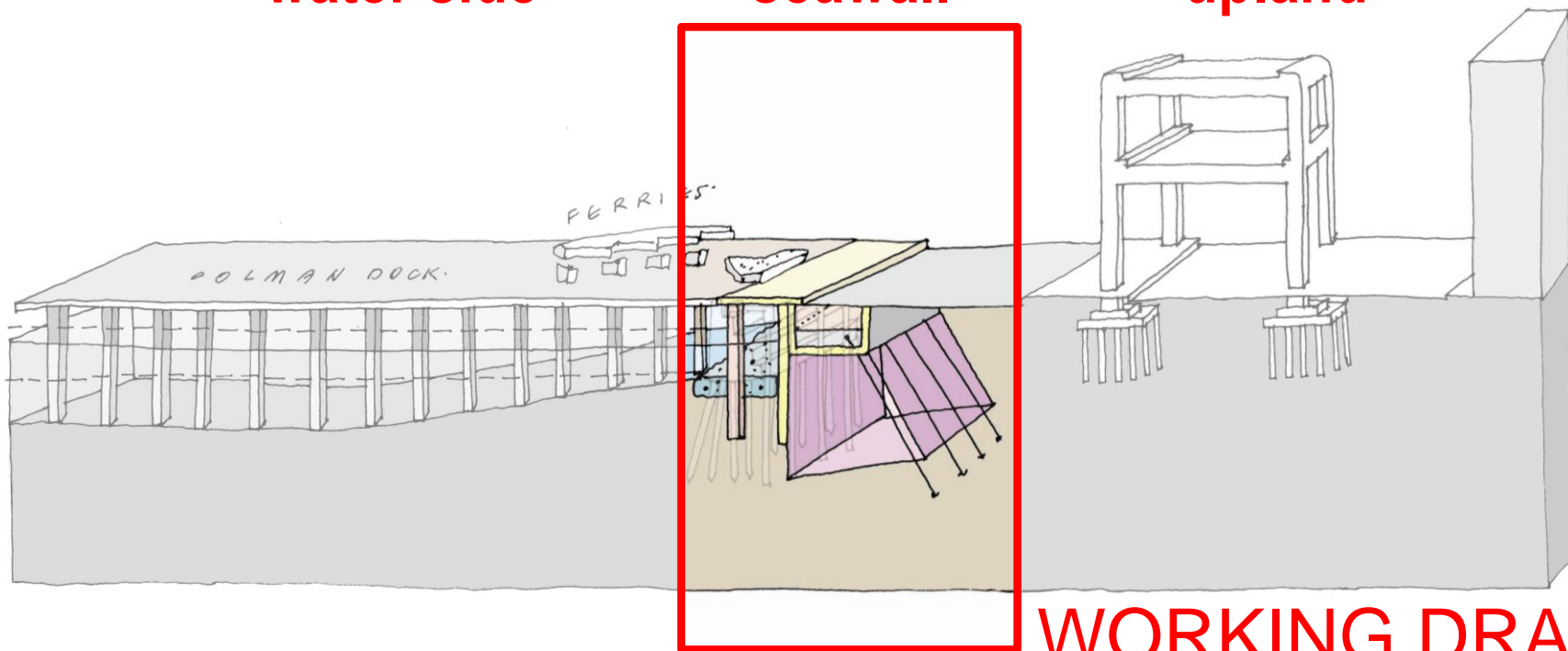
WORKING DRAFT



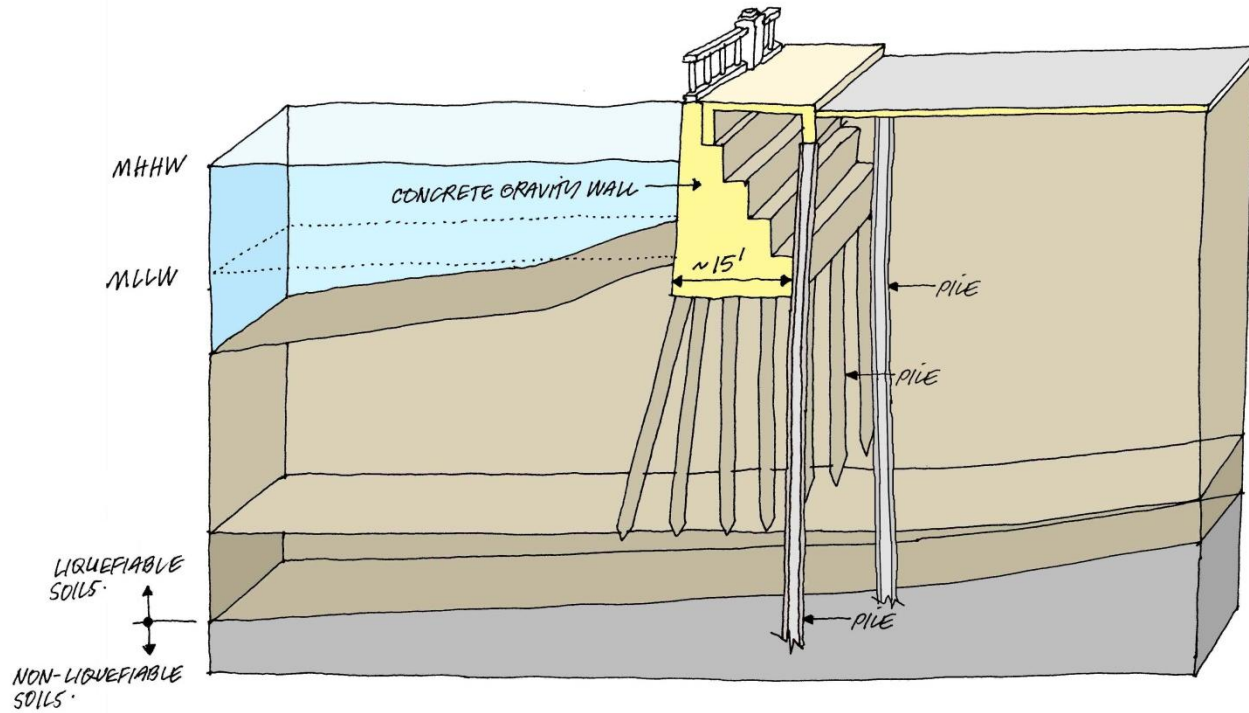
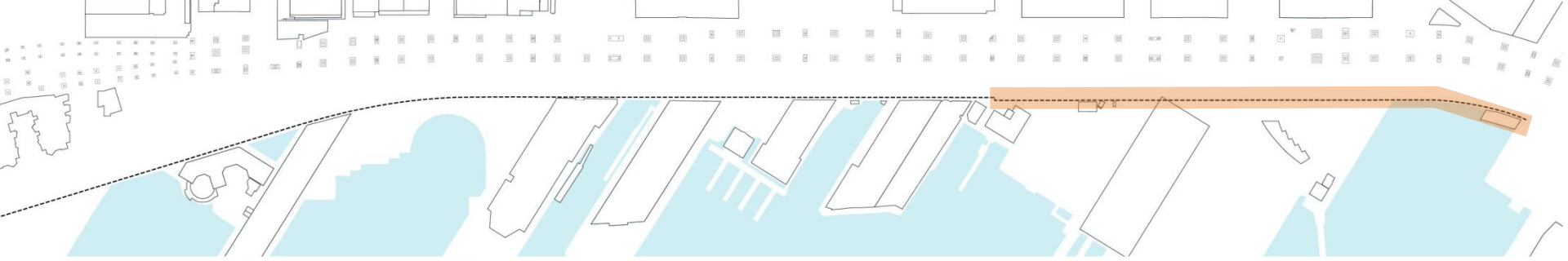
water side

seawall

upland

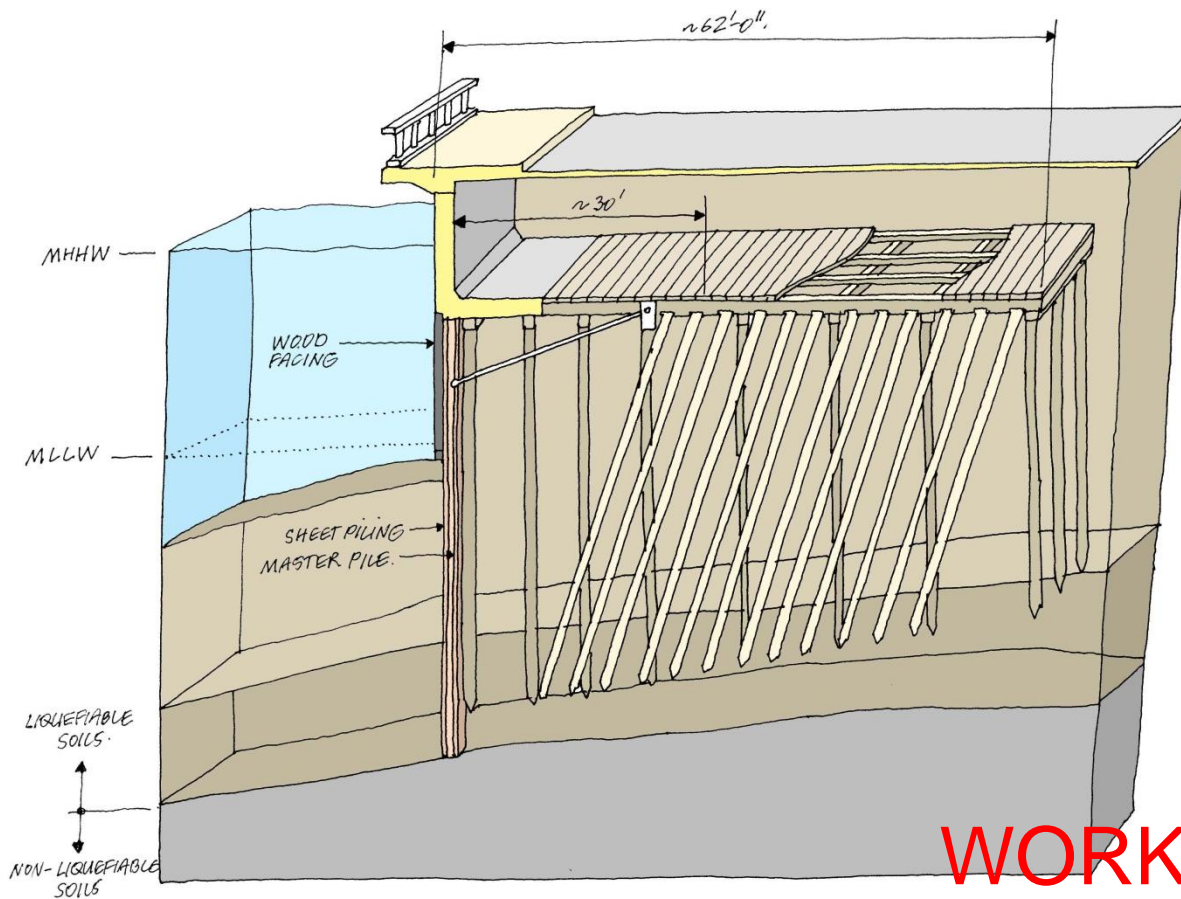
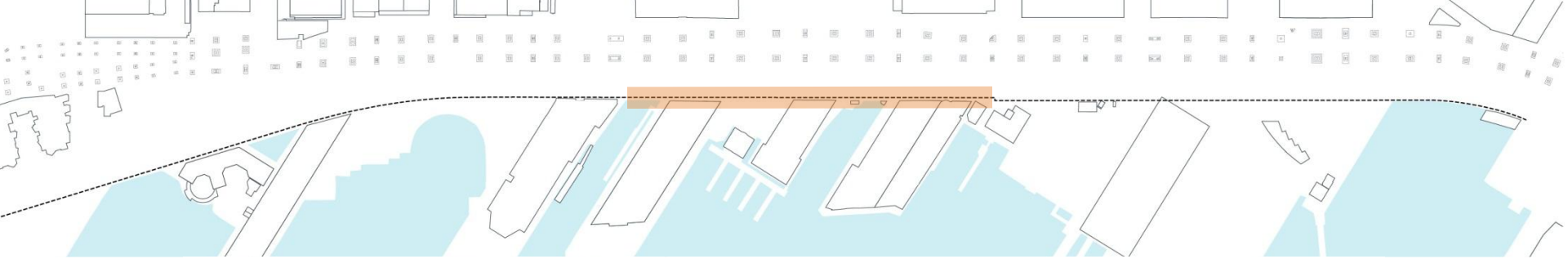


WORKING DRAFT



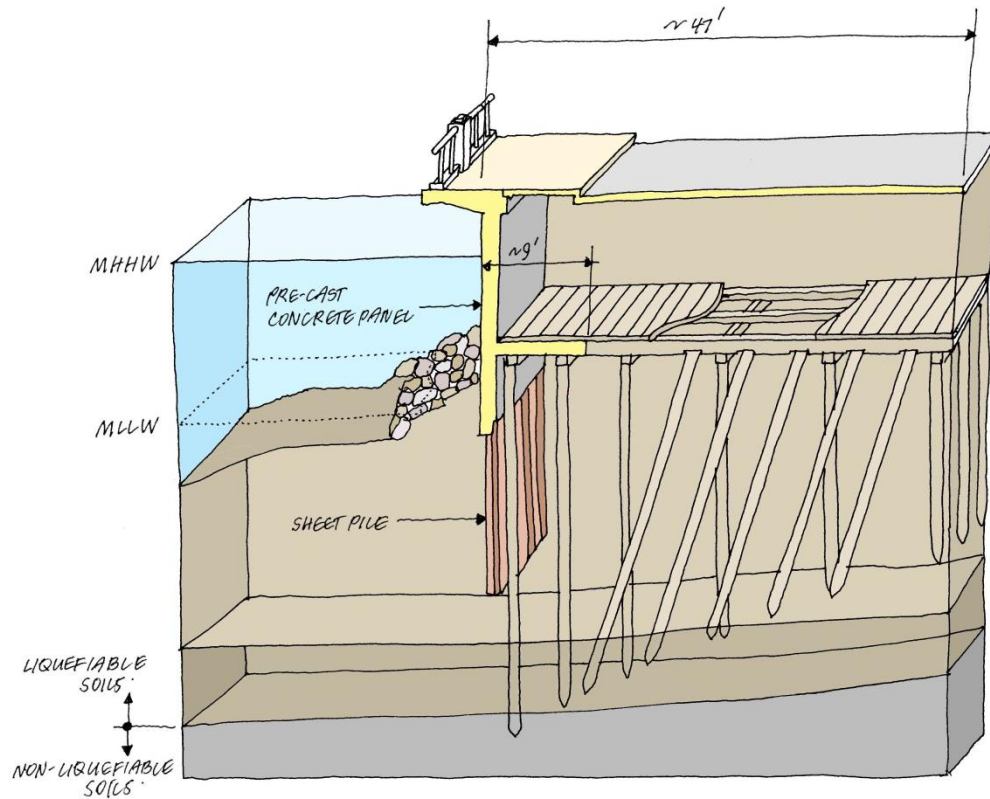
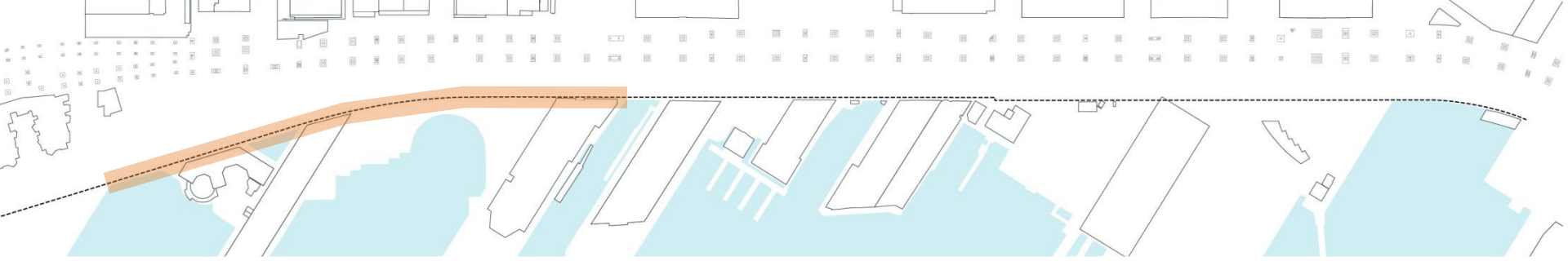
WORKING DRAFT

existing gravity wall



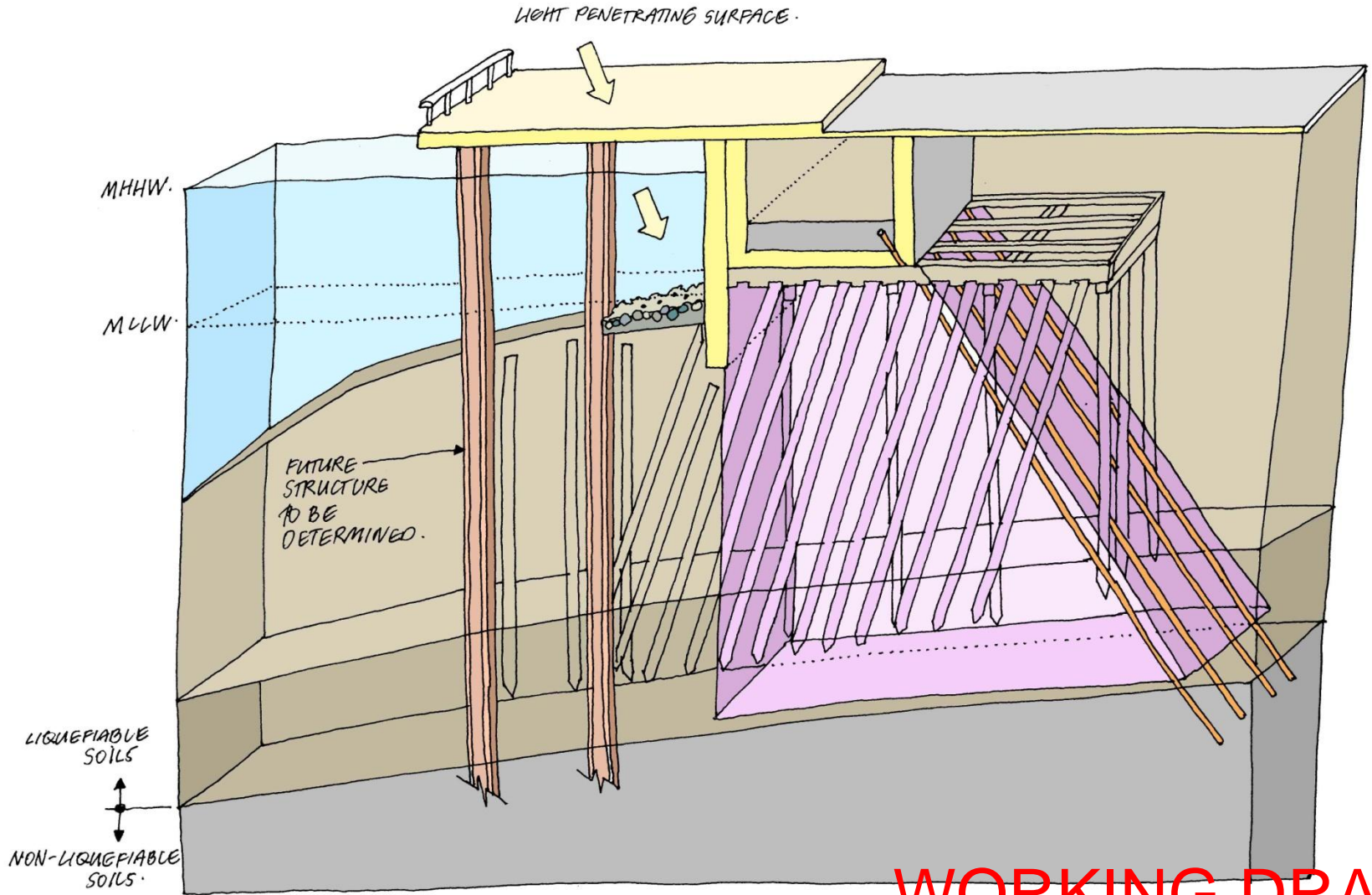
WORKING DRAFT

existing type B seawall



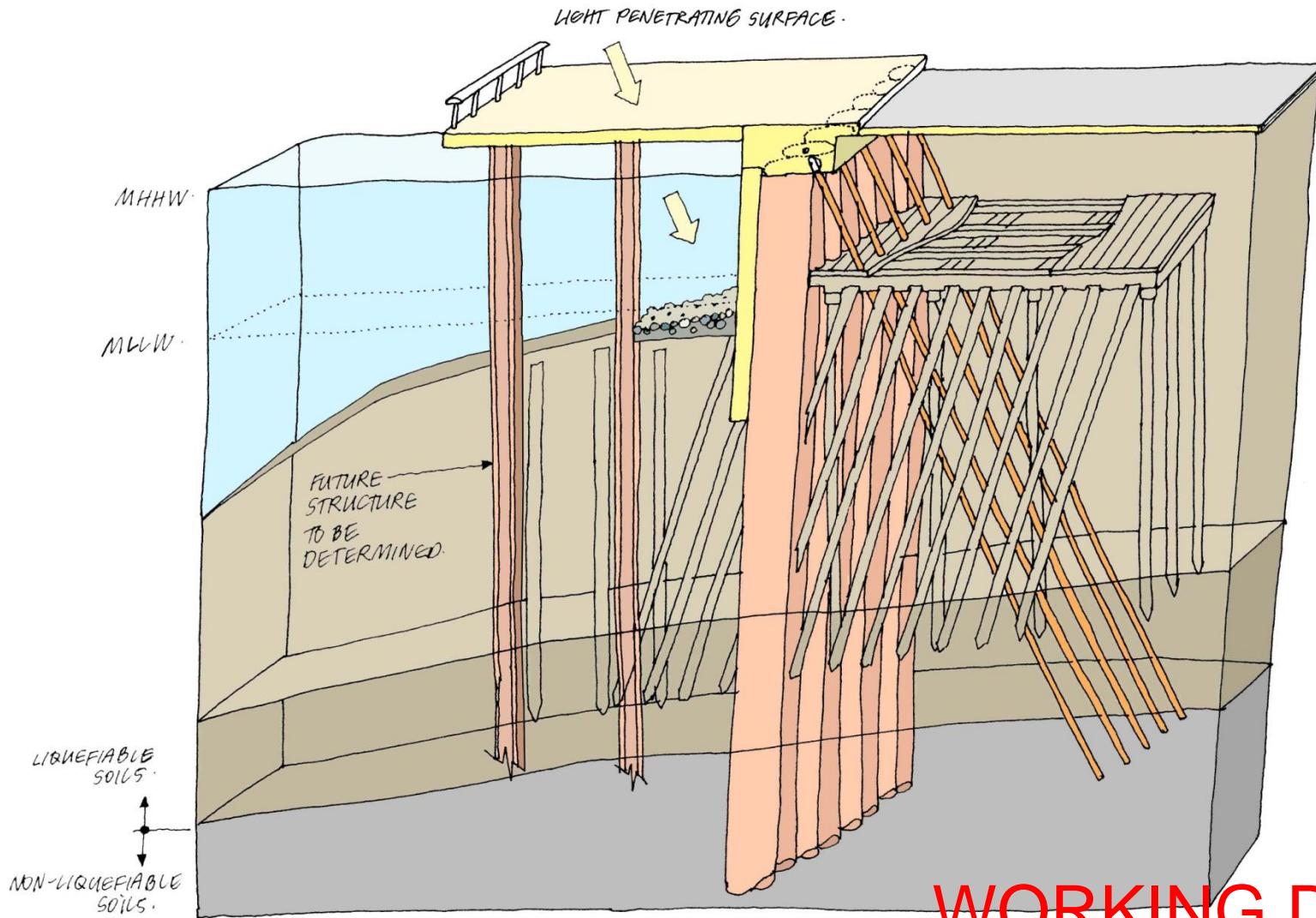
WORKING DRAFT

existing type A seawall



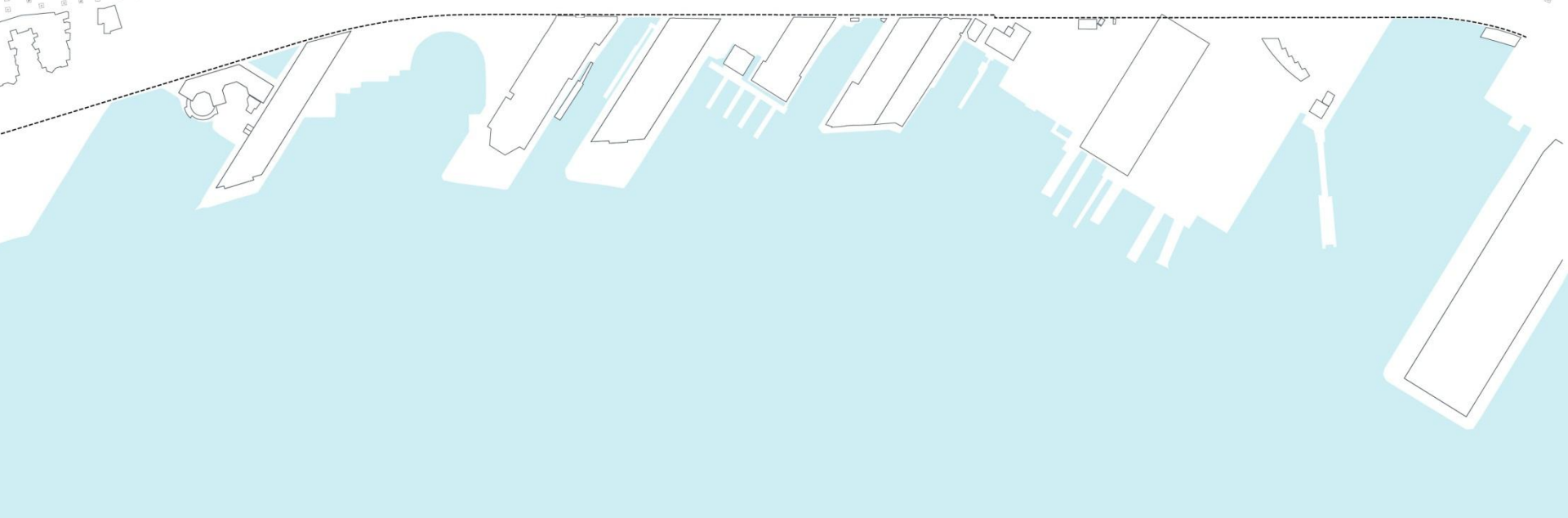
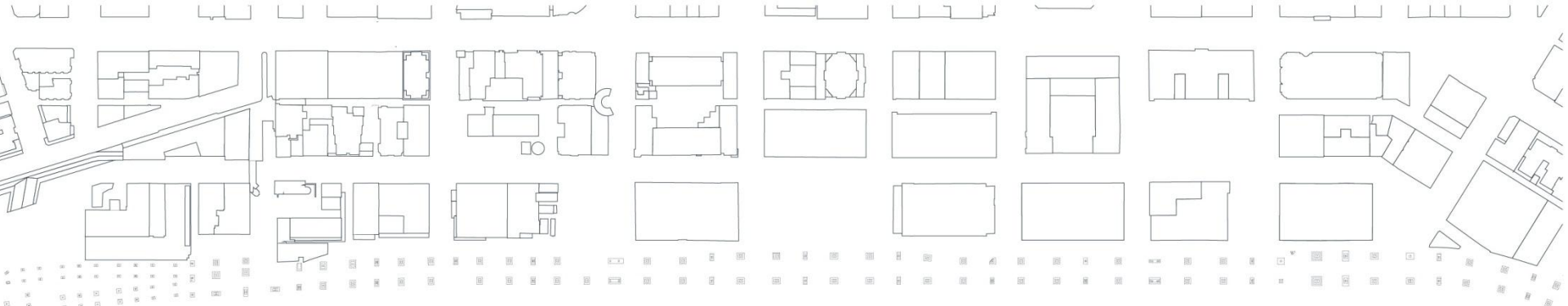
WORKING DRAFT

new seawall – jet grouting



WORKING DRAFT

new seawall – drilled shaft

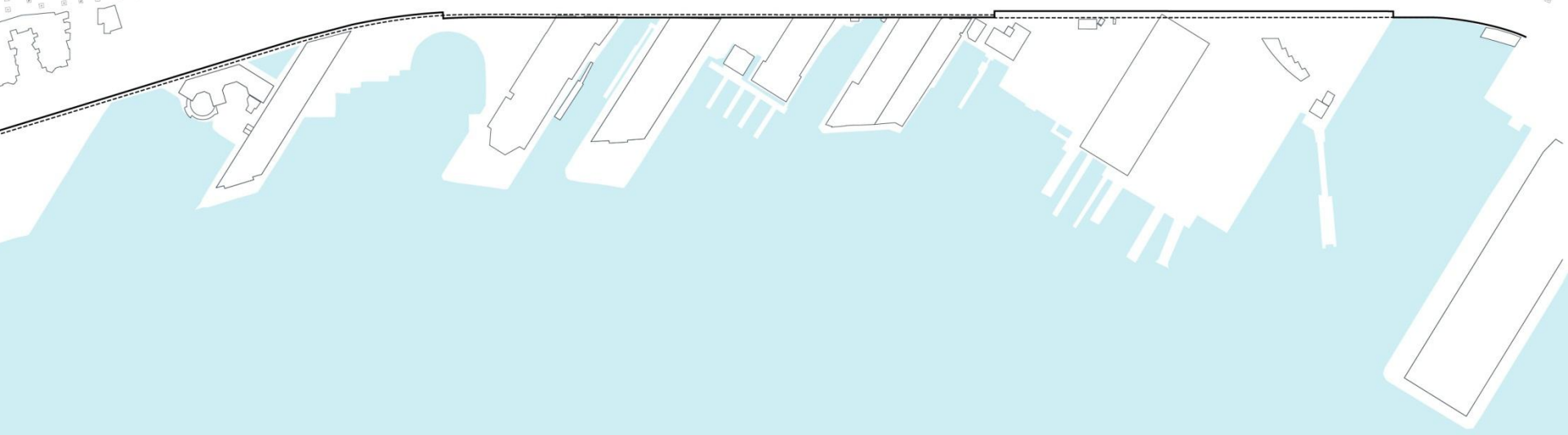
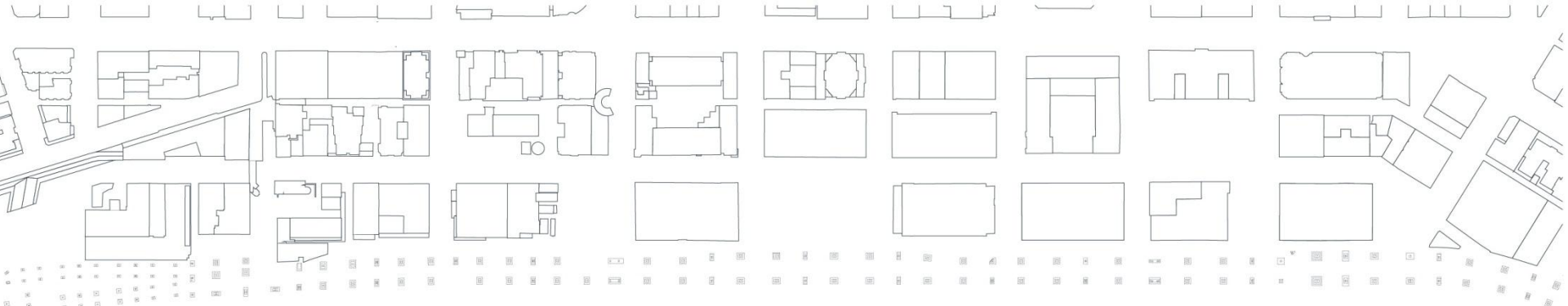


----- existing seawall

WORKING DRAFT

alternative A 

Elliott Bay  **Seawall**
Project



--- existing seawall
— alternative seawall

WORKING DRAFT

alternative A 

Elliott Bay  **Seawall**
Project



- existing seawall
- alternative seawall
- sidewalk
- multi-use path

WORKING DRAFT

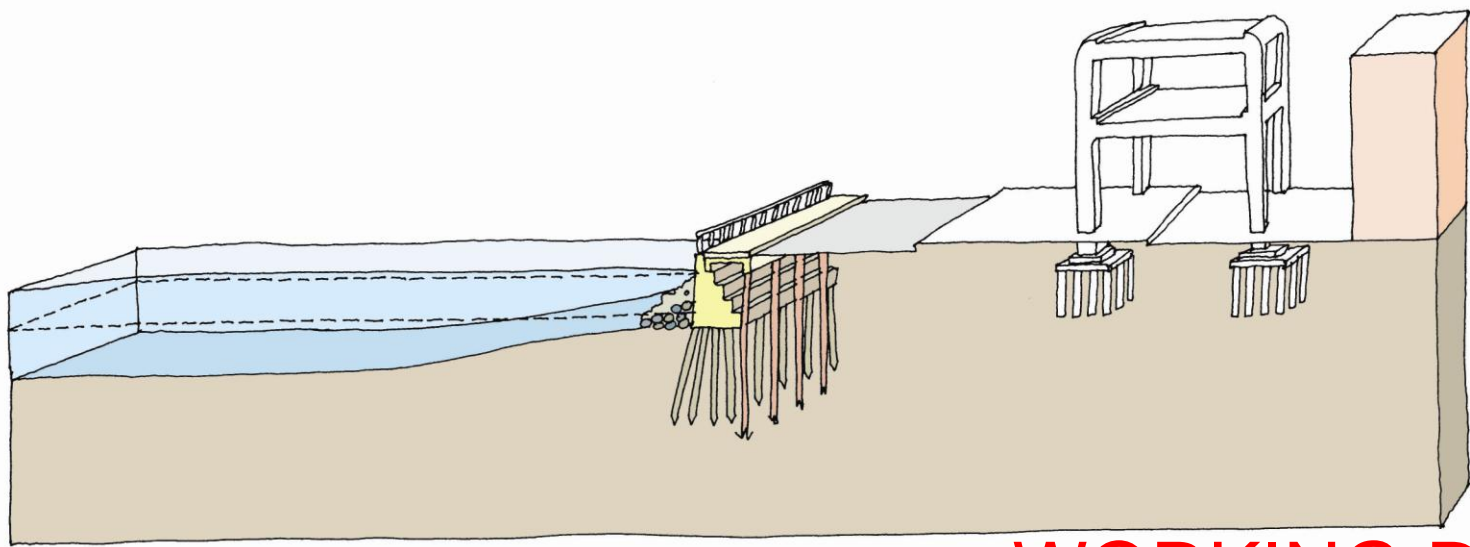
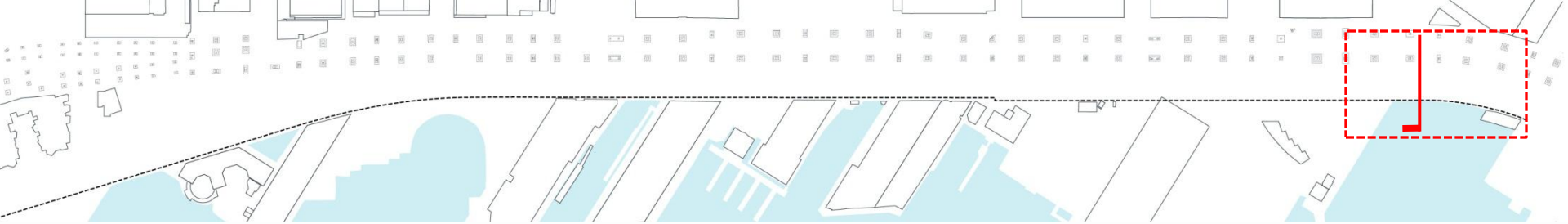
alternative A 



- existing seawall
- alternative seawall
- █ sidewalk
- █ multi-use path
- █ habitat corridor enhancement

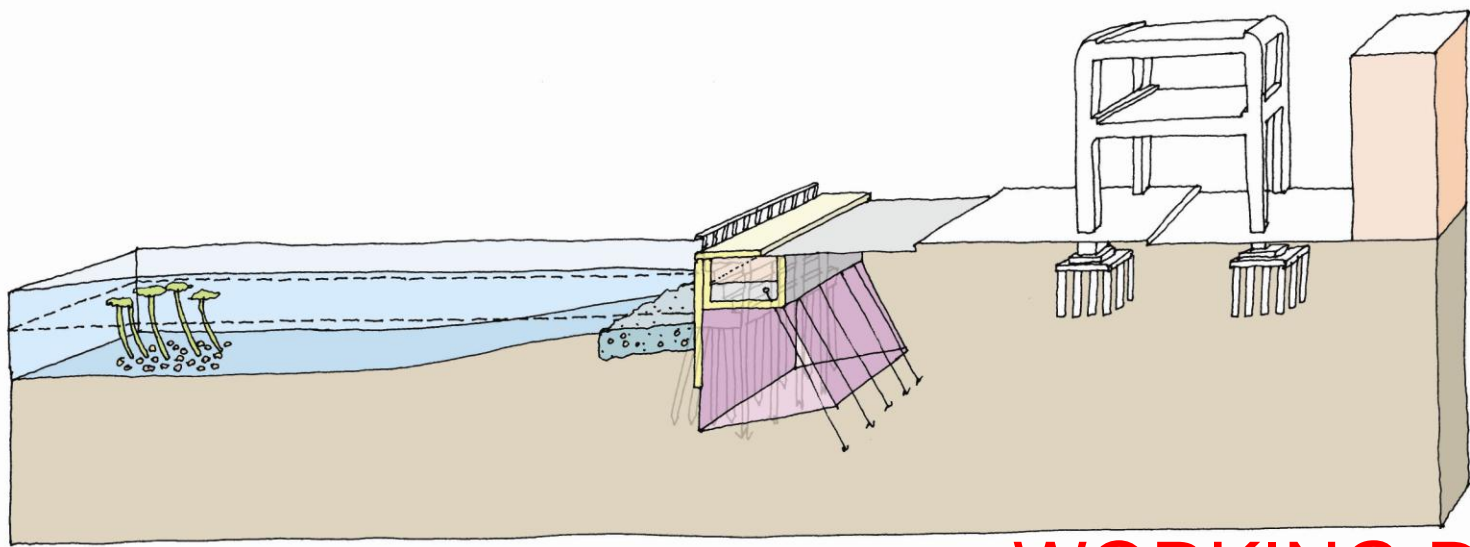
alternative A 

WORKING DRAFT



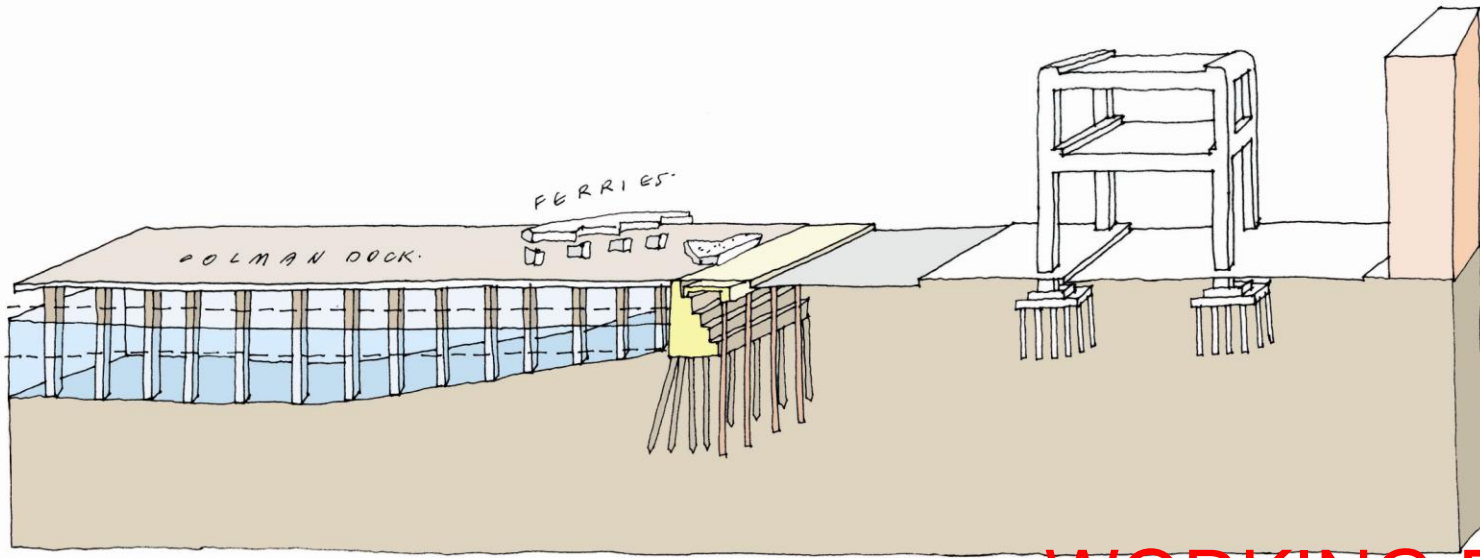
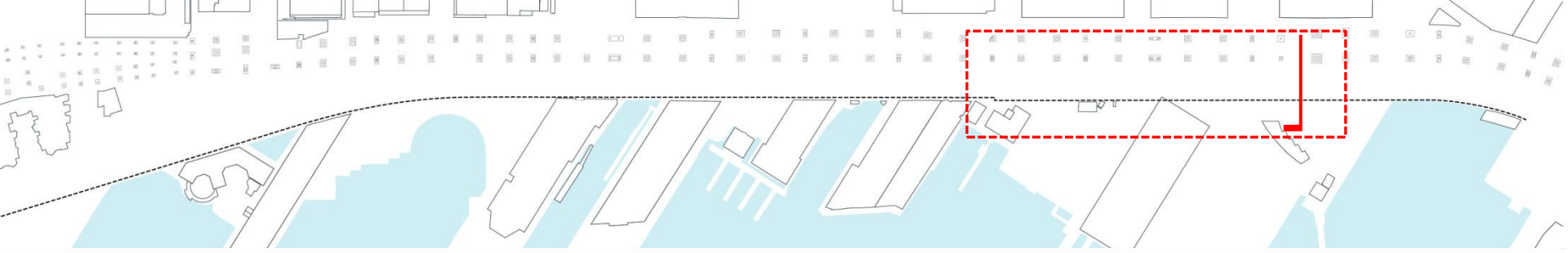
WORKING DRAFT

existing – zone 01



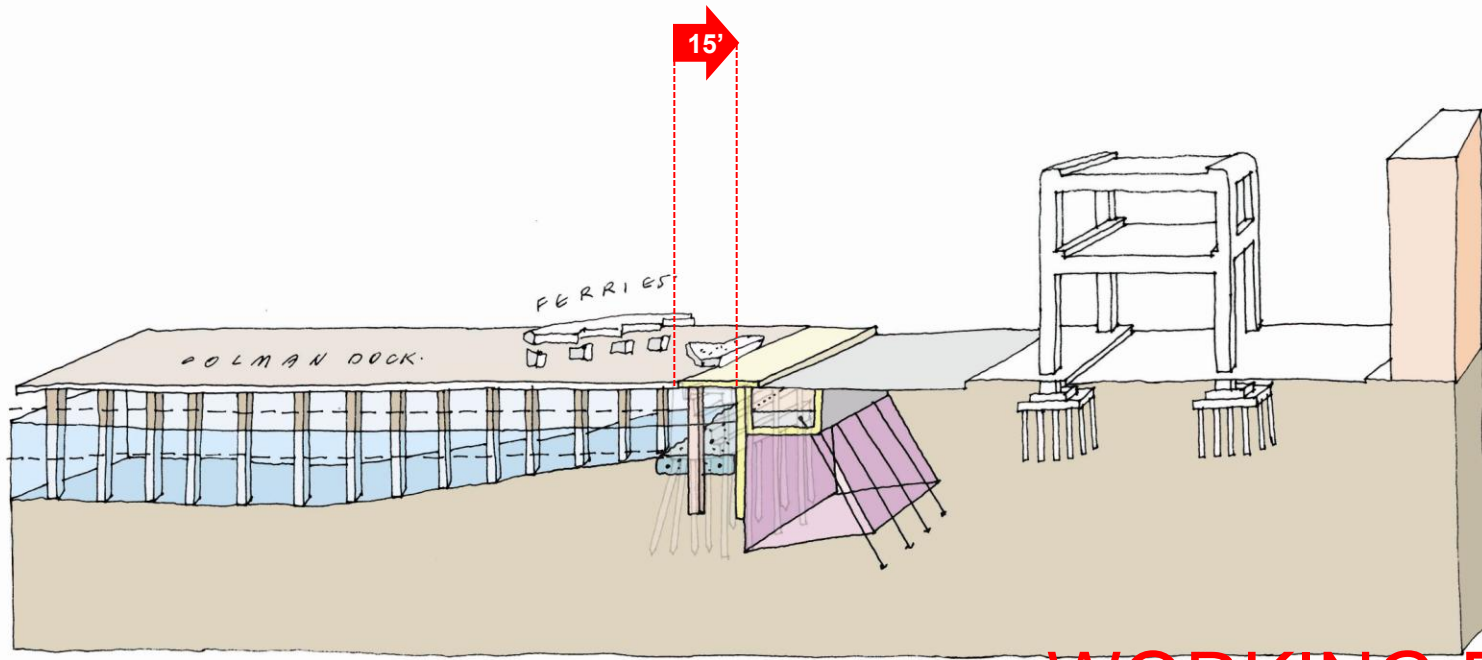
WORKING DRAFT

alt A – zone 01



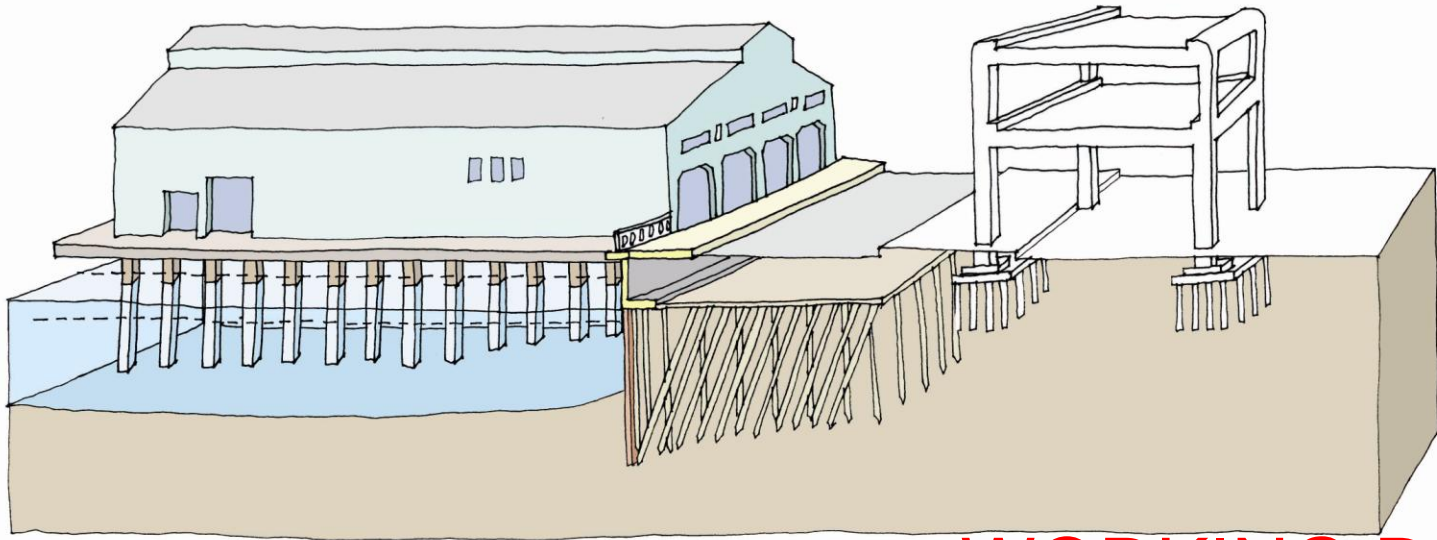
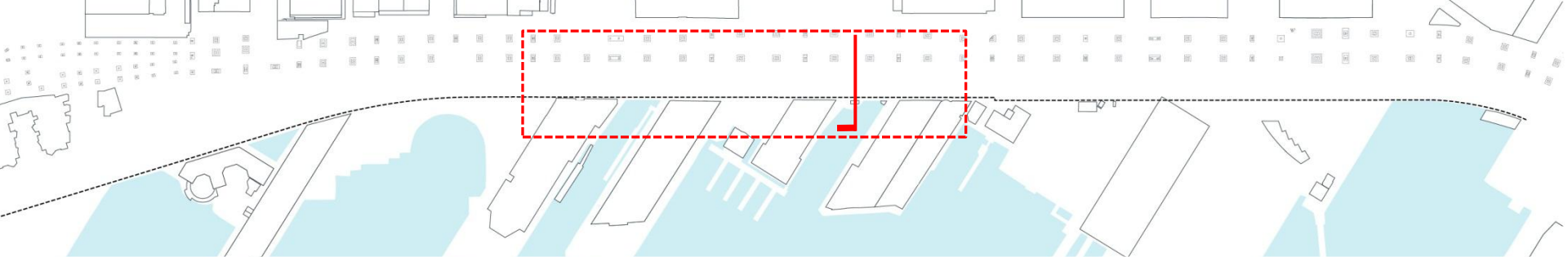
WORKING DRAFT

existing – zone 02



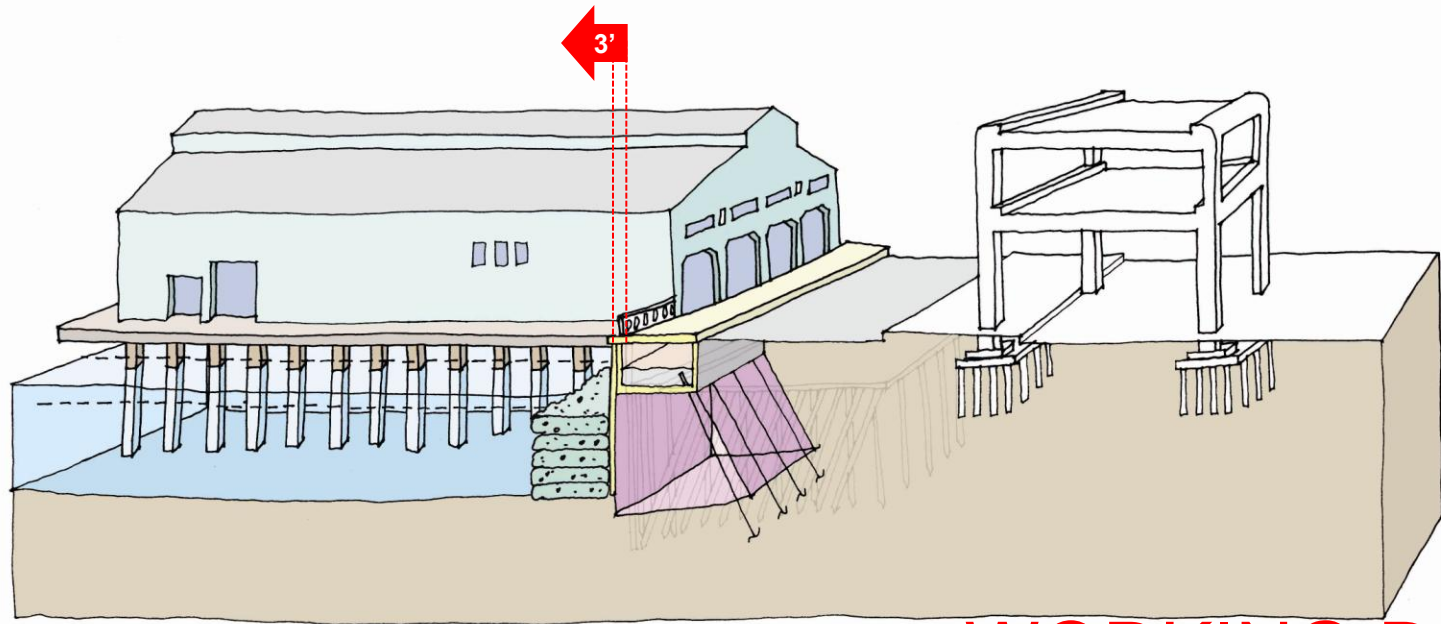
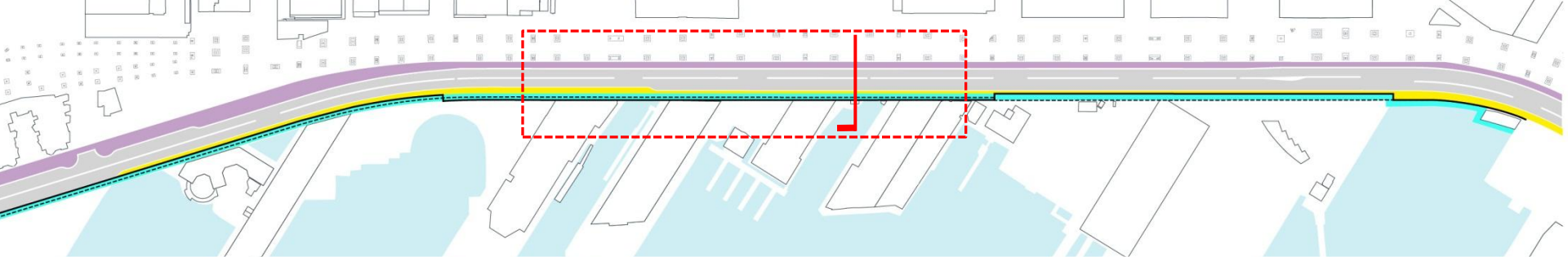
WORKING DRAFT

alt A – zone 02



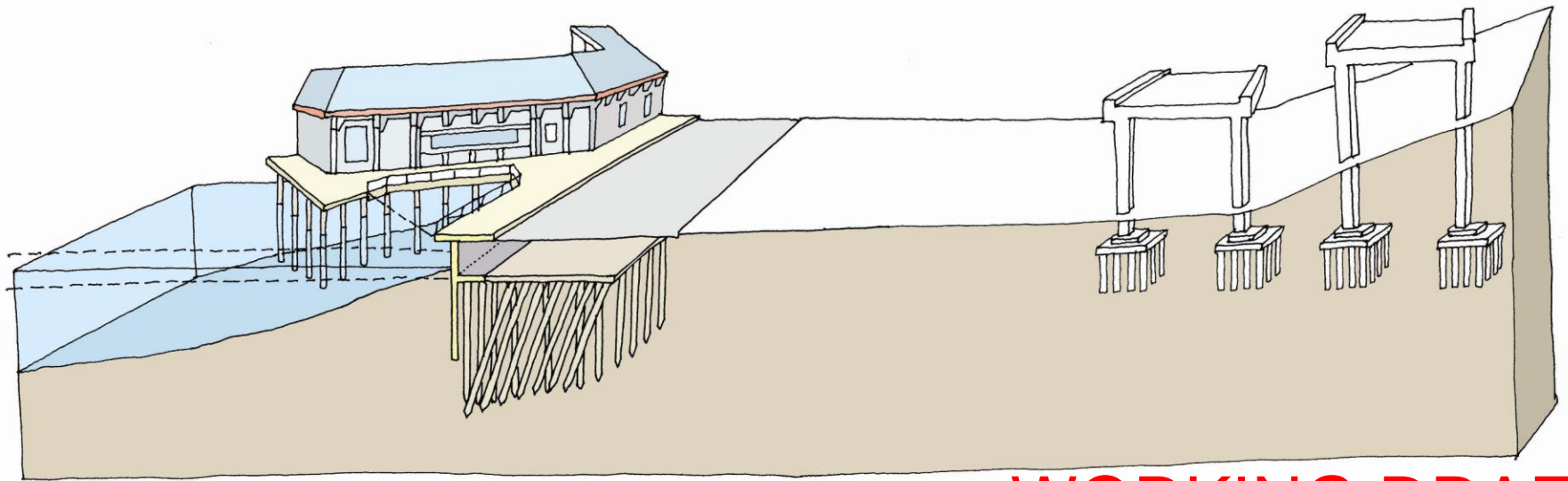
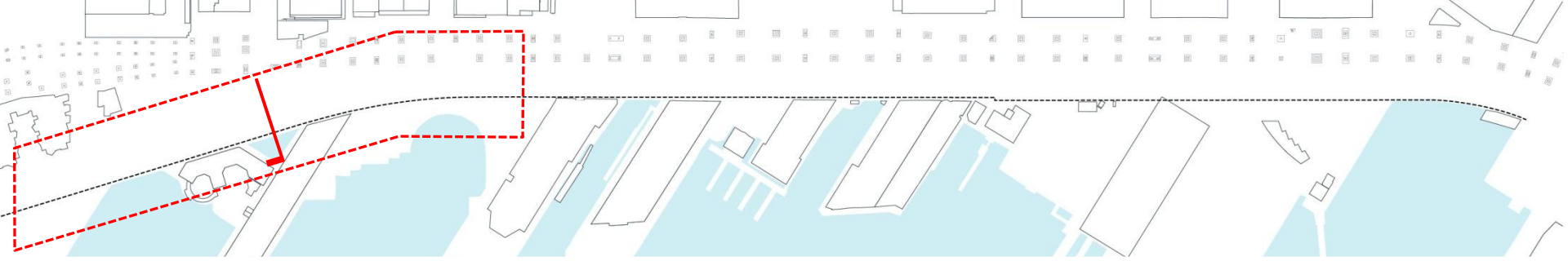
WORKING DRAFT

existing – zone 03



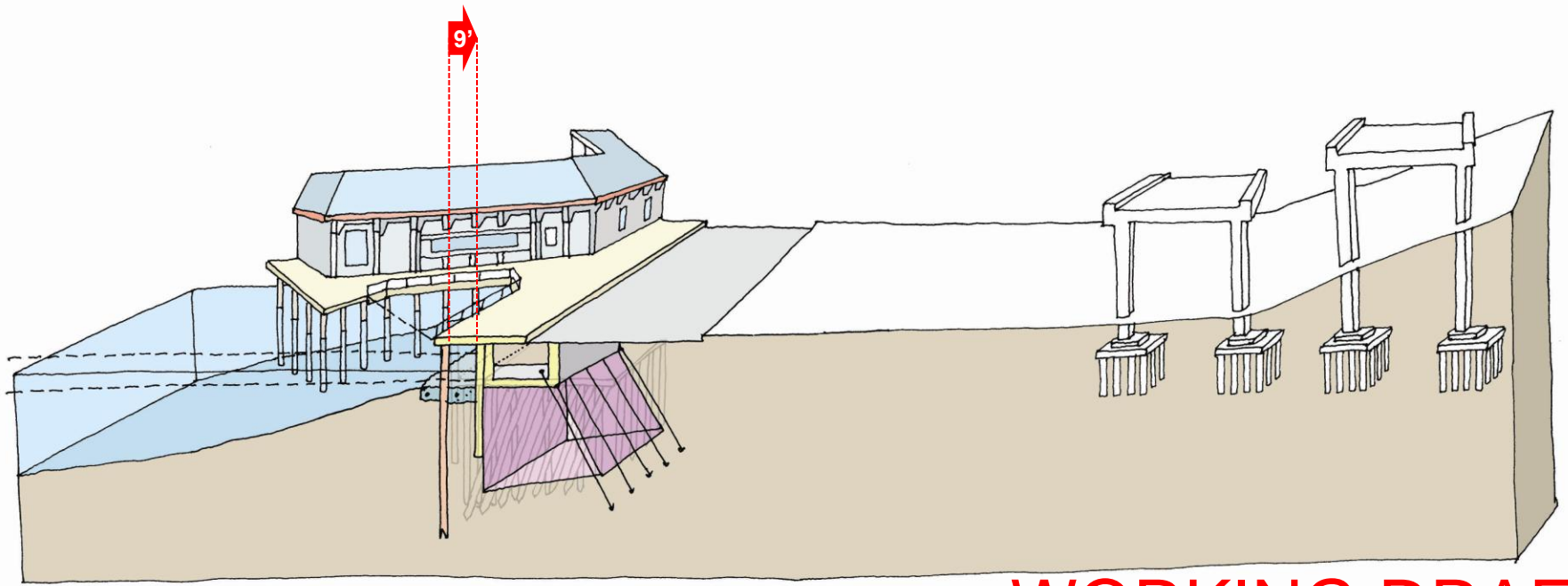
WORKING DRAFT

alt A – zone 03



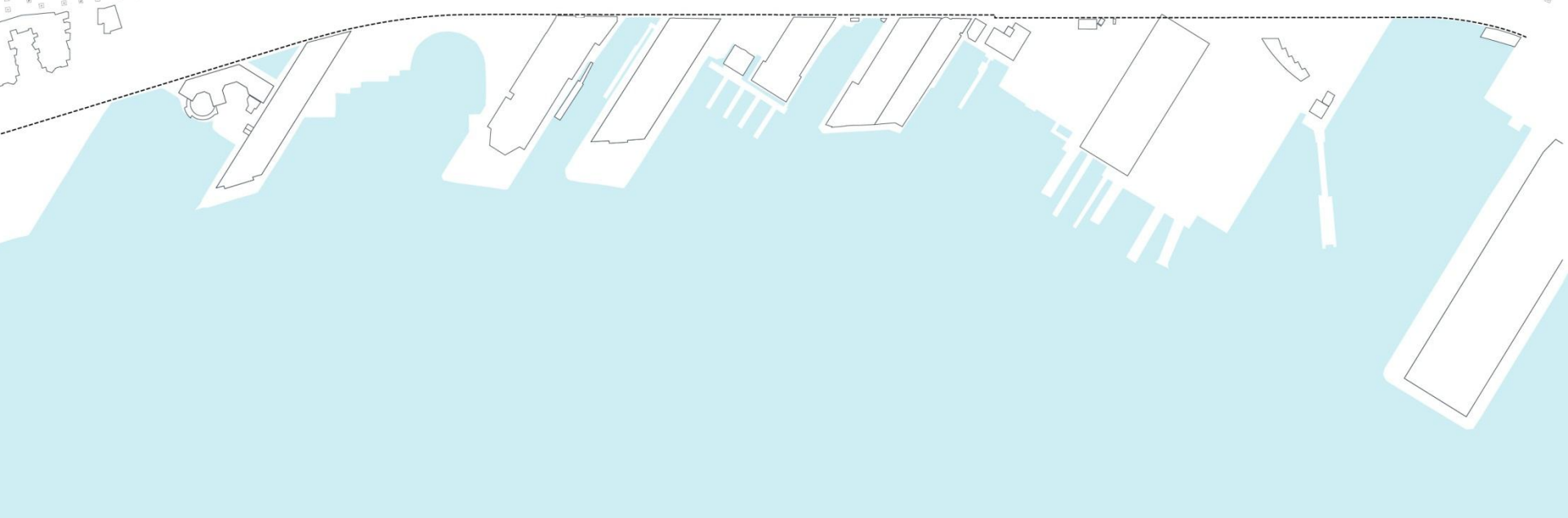
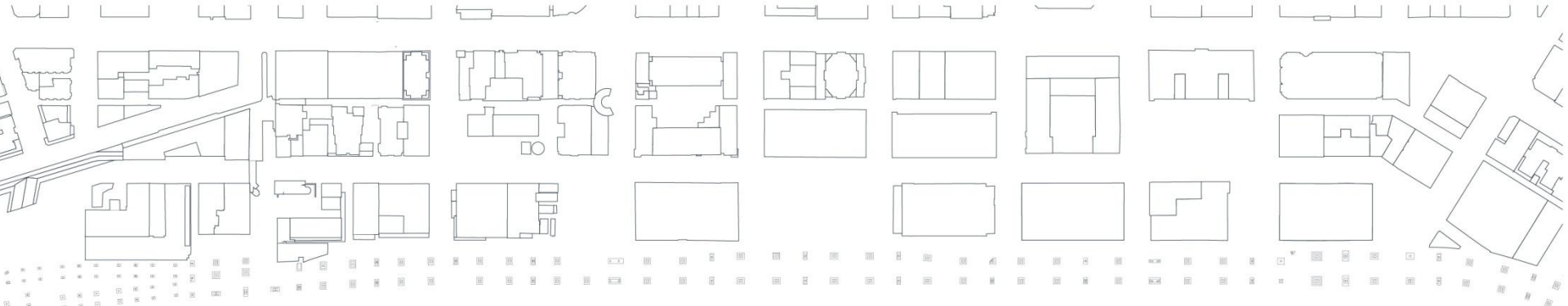
WORKING DRAFT

existing – zone 04



WORKING DRAFT

alt A – zone 04

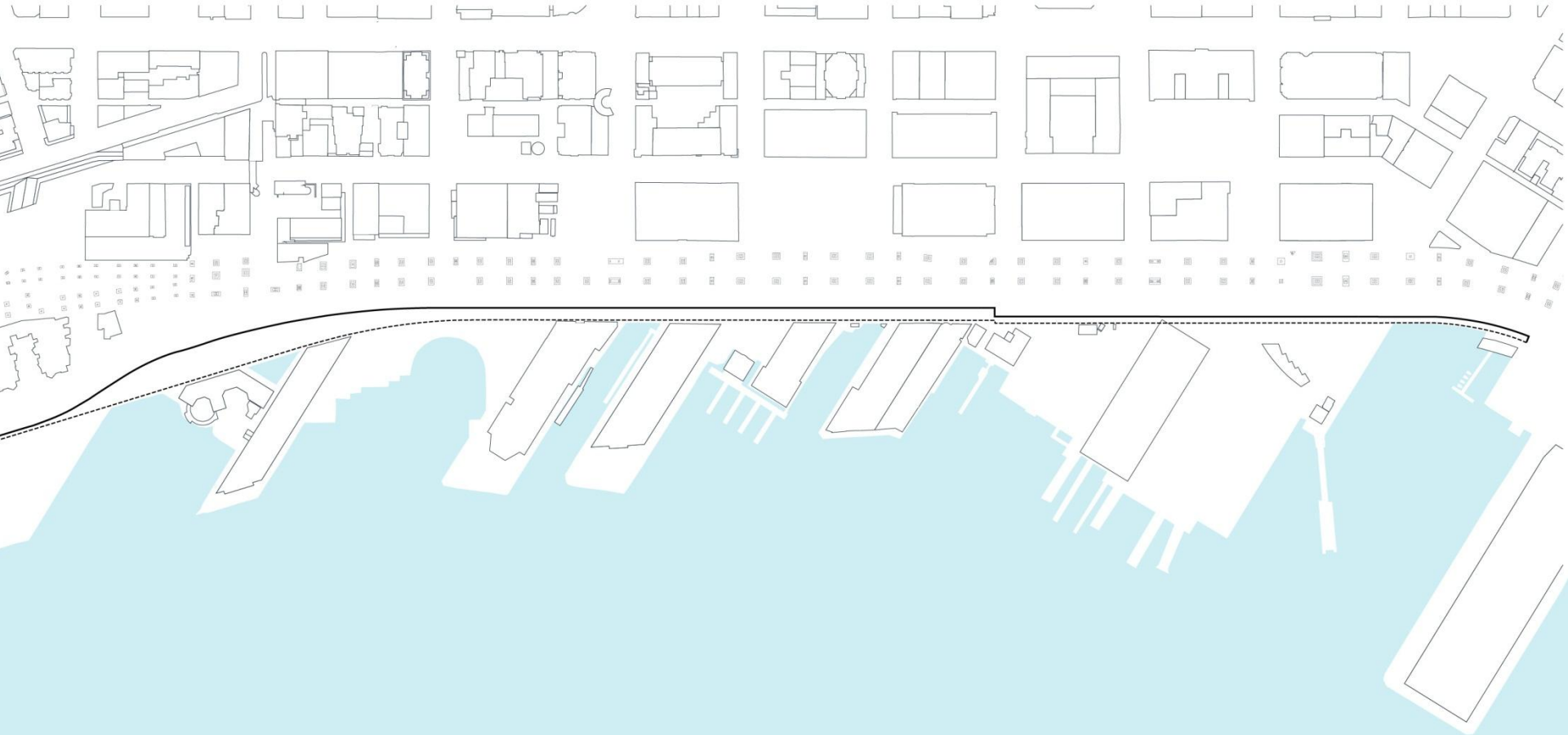


--- existing seawall

WORKING DRAFT

alternative B 

Elliott Bay  **Seawall**
Project

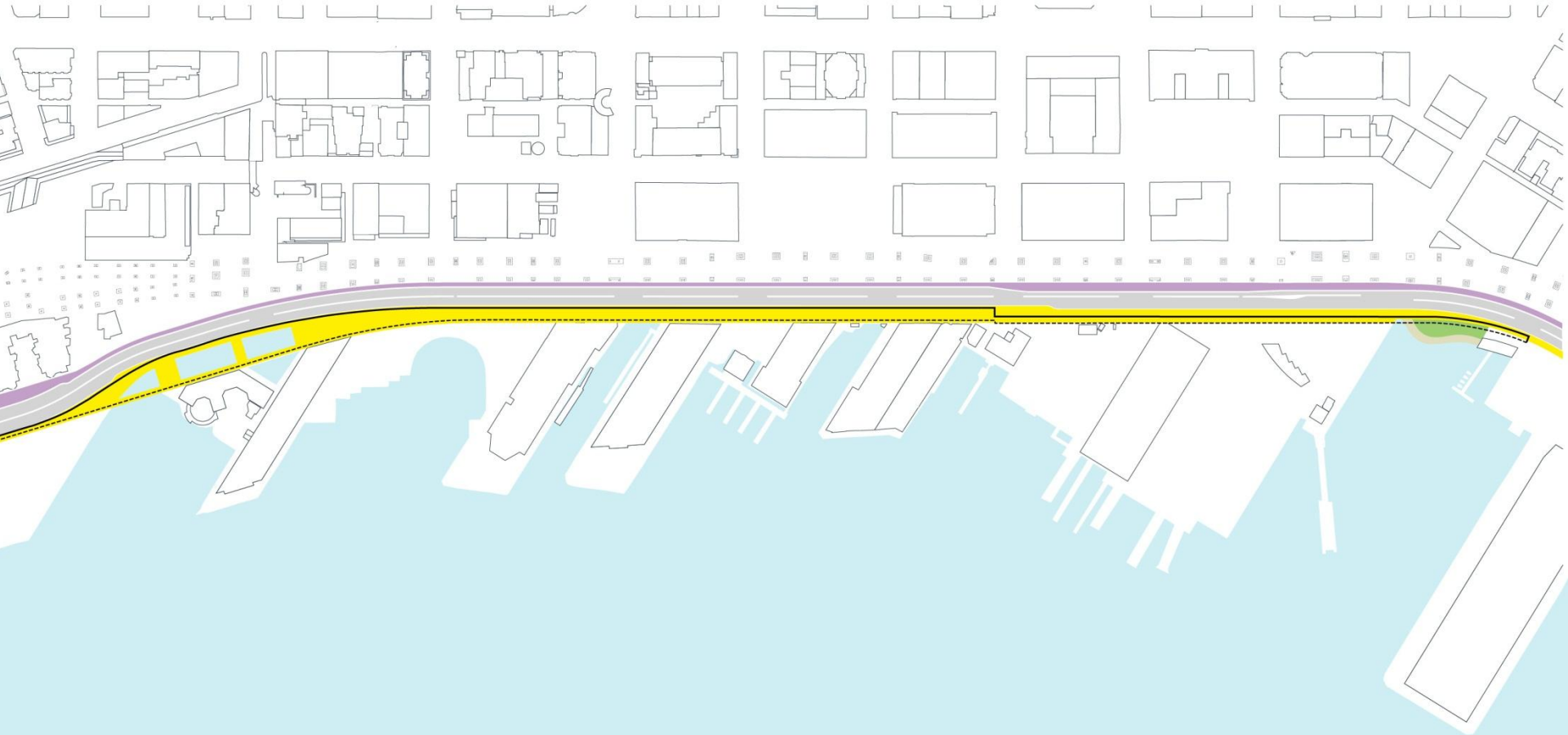


--- existing seawall
— alternative seawall

alternative B 

WORKING DRAFT

Elliott Bay  **Seawall**
Project



- existing seawall
- alternative seawall
- sidewalk
- multi-use path

WORKING DRAFT

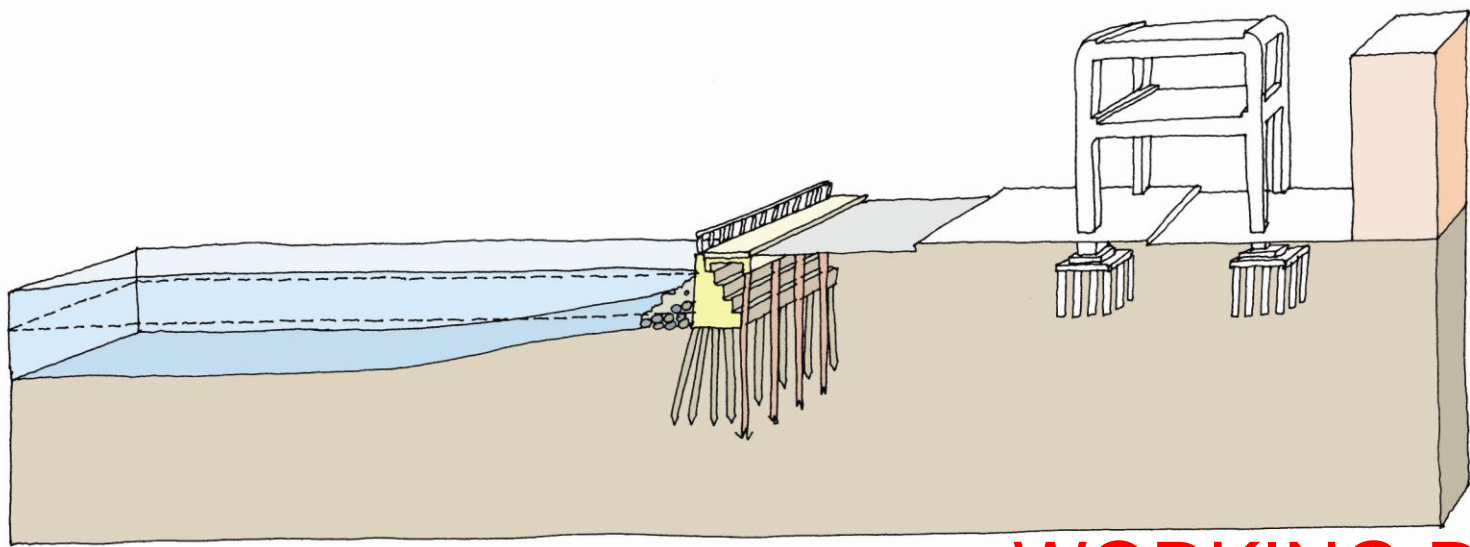
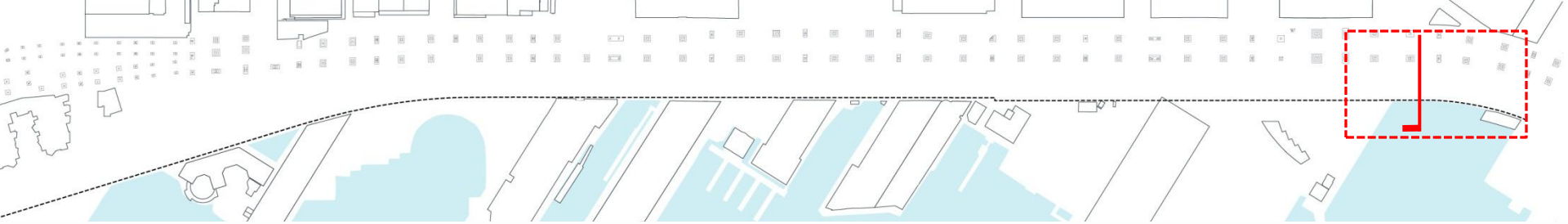
alternative B 



- existing seawall
- alternative seawall
- sidewalk
- multi-use path
- habitat corridor enhancement

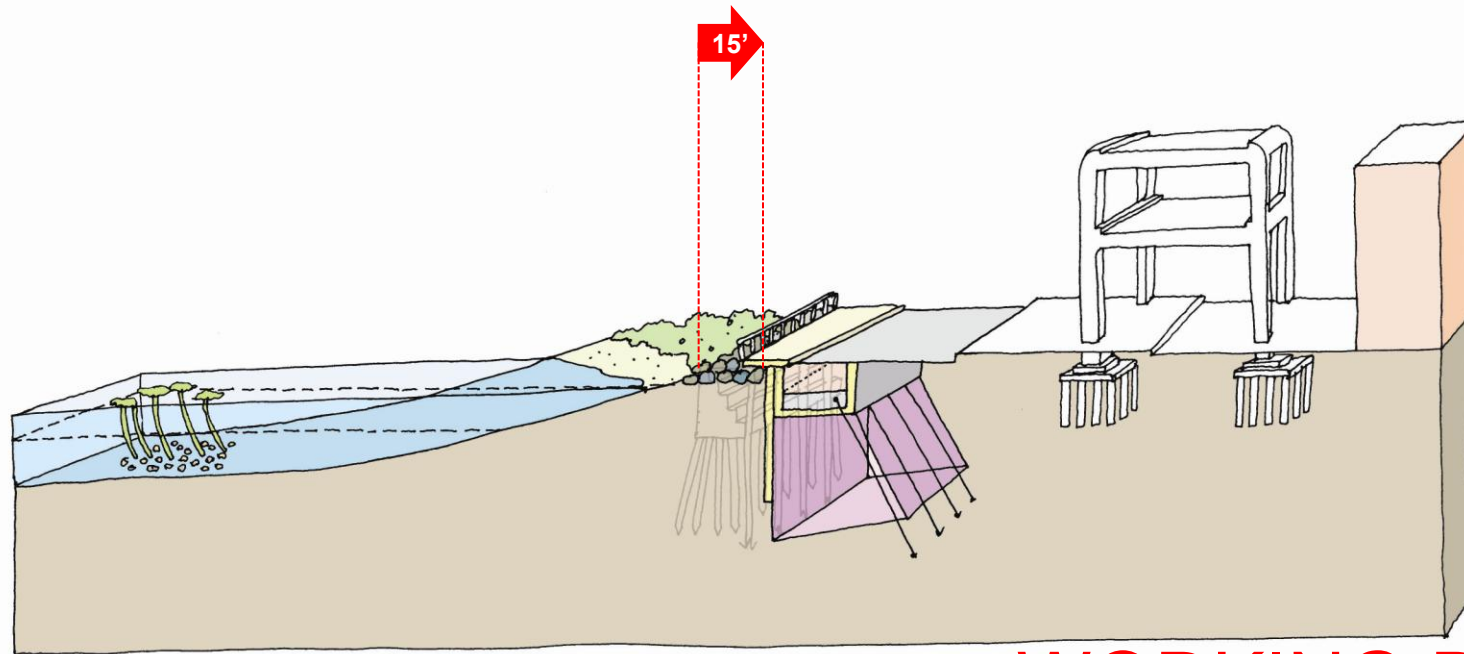
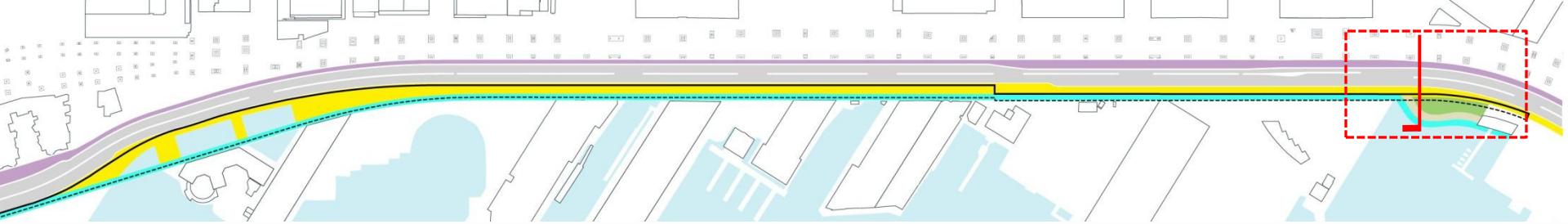
alternative B 

WORKING DRAFT



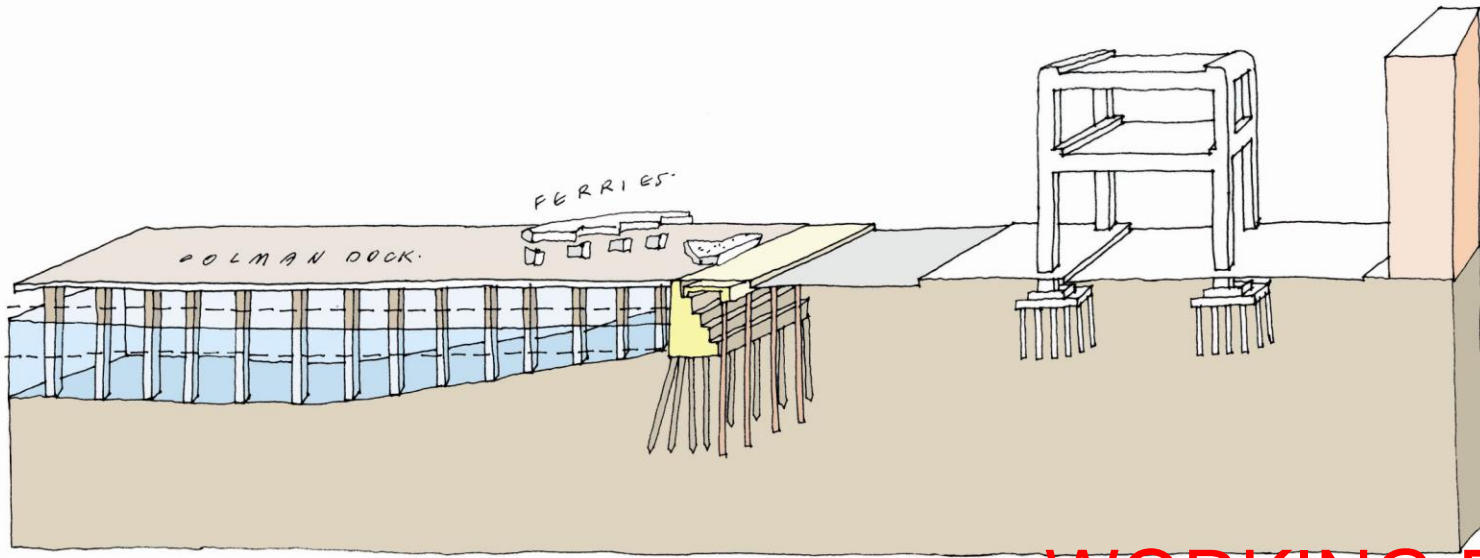
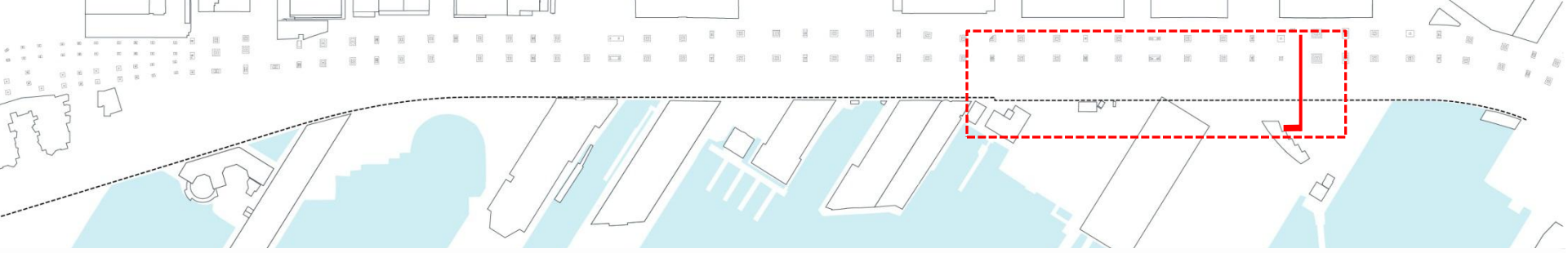
WORKING DRAFT

existing – zone 01



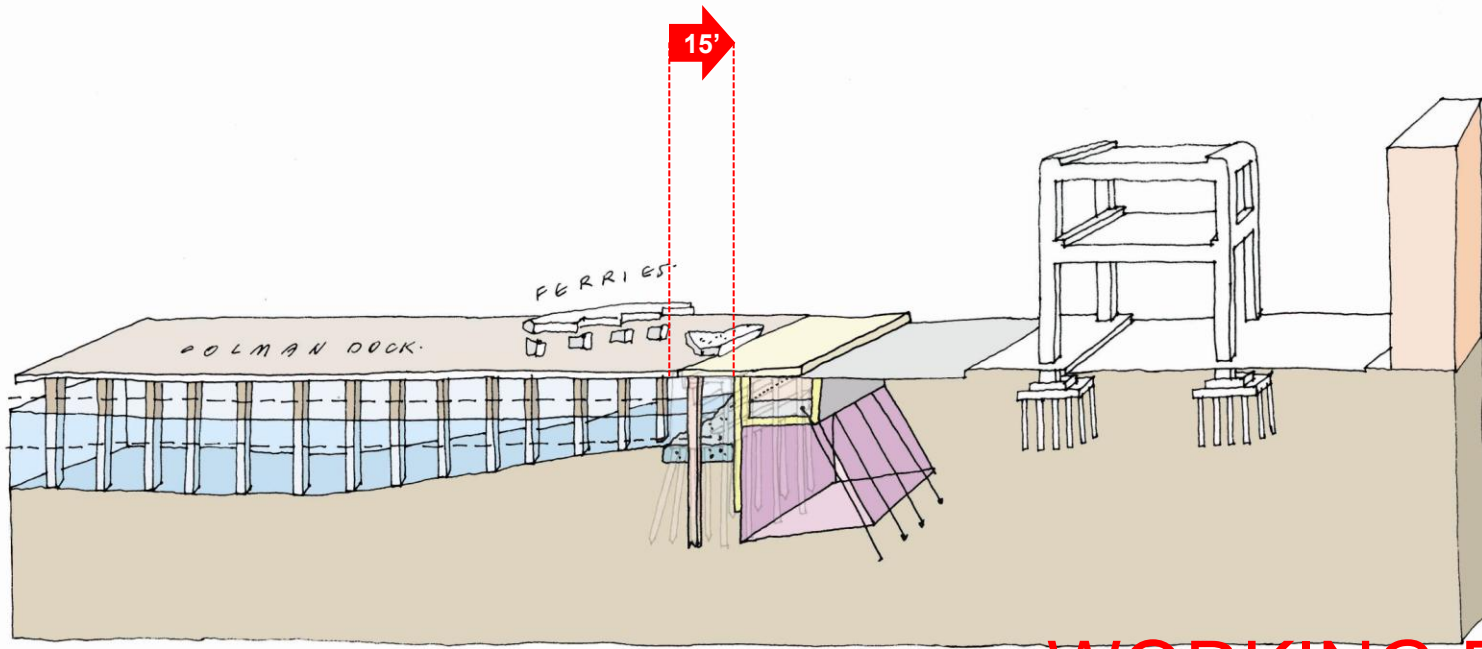
WORKING DRAFT

alt B – zone 01



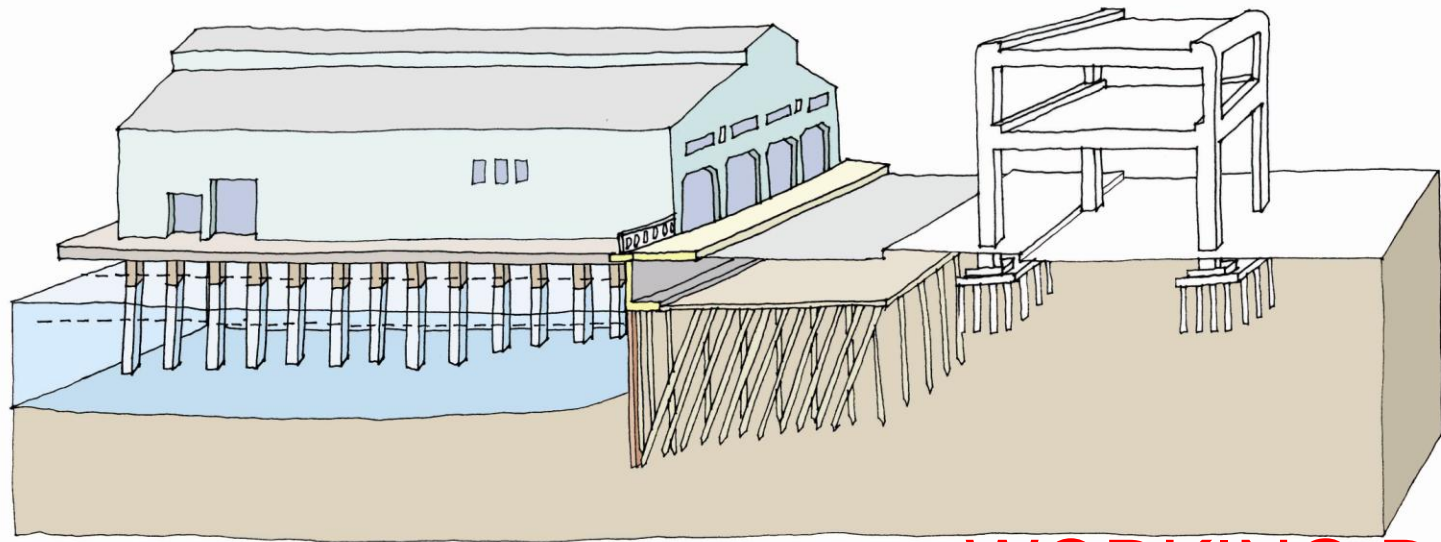
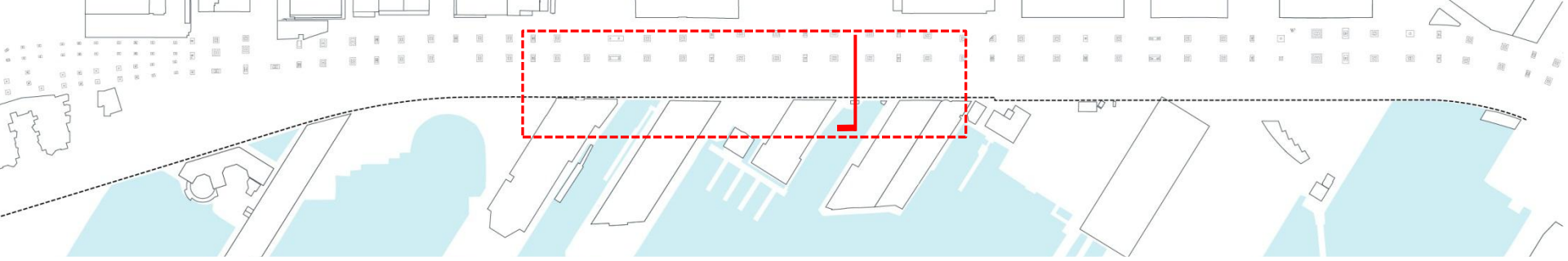
WORKING DRAFT

existing – zone 02



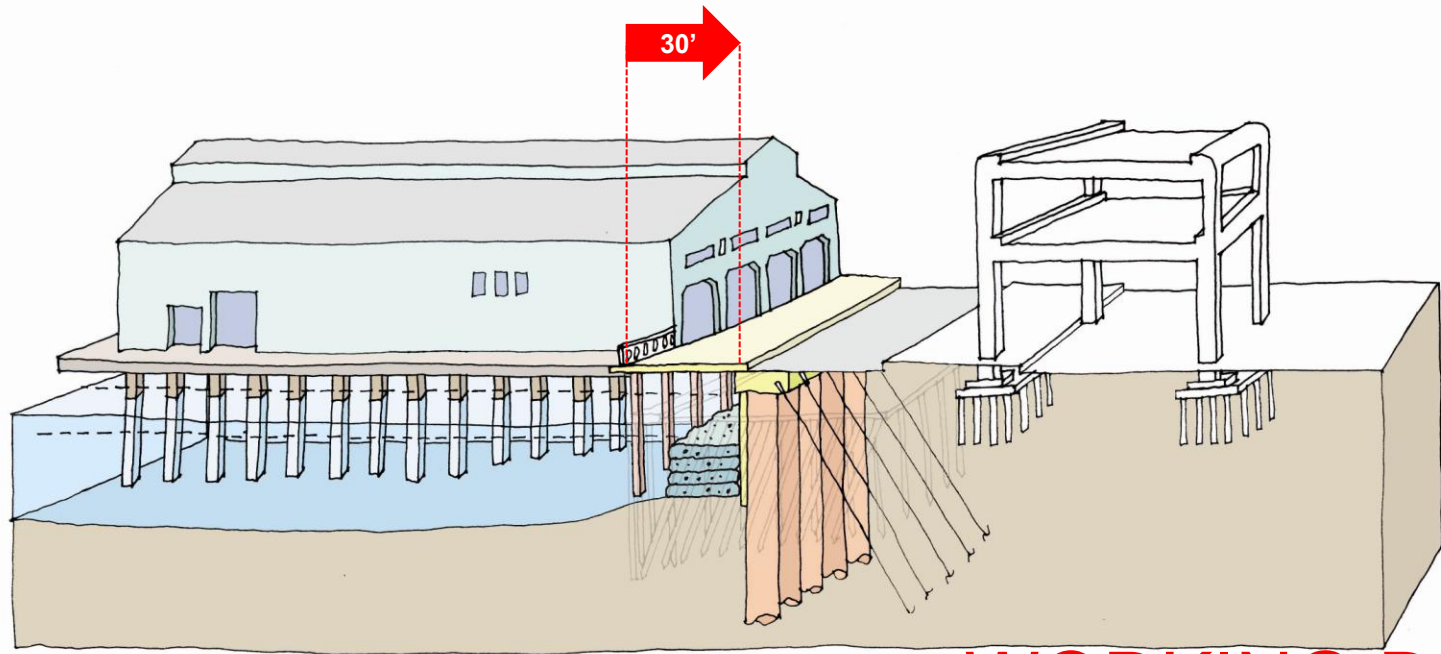
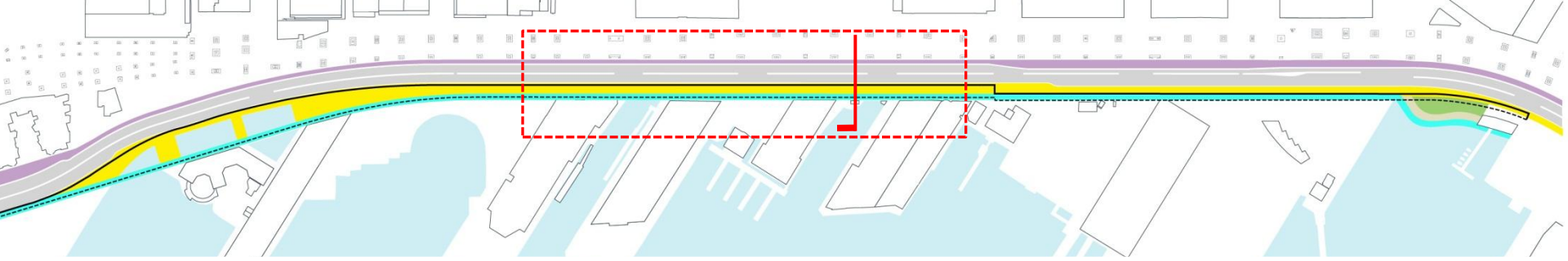
WORKING DRAFT

alt B – zone 02



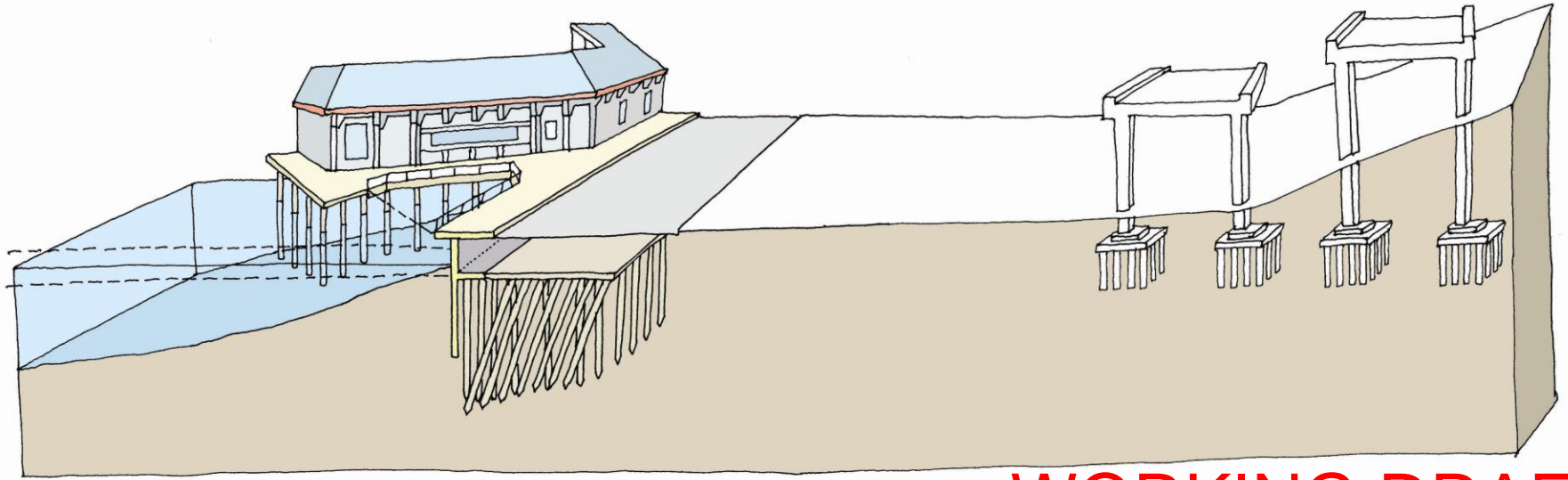
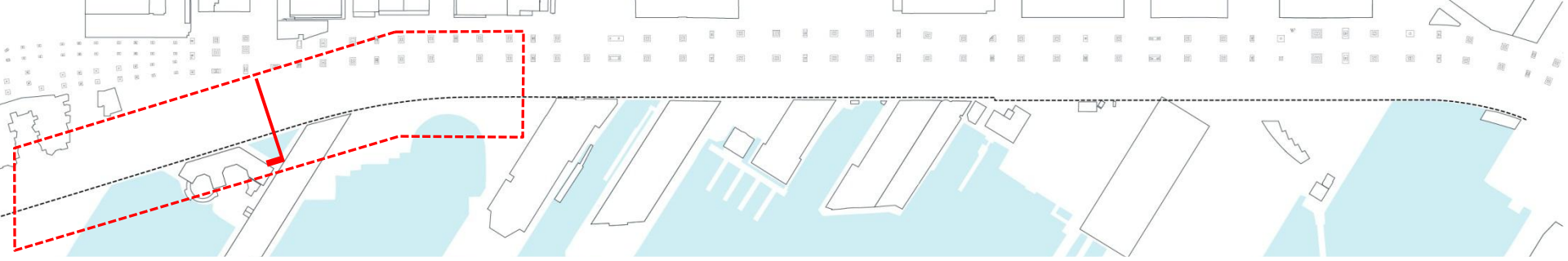
WORKING DRAFT

existing – zone 03



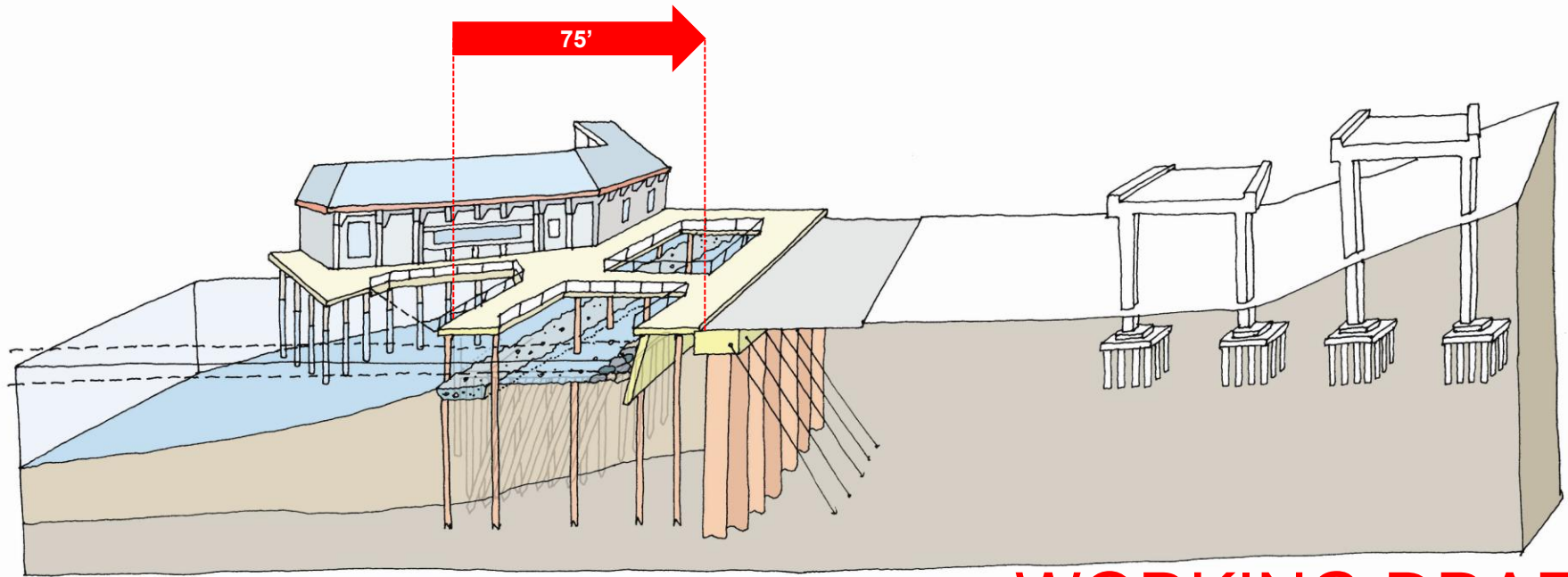
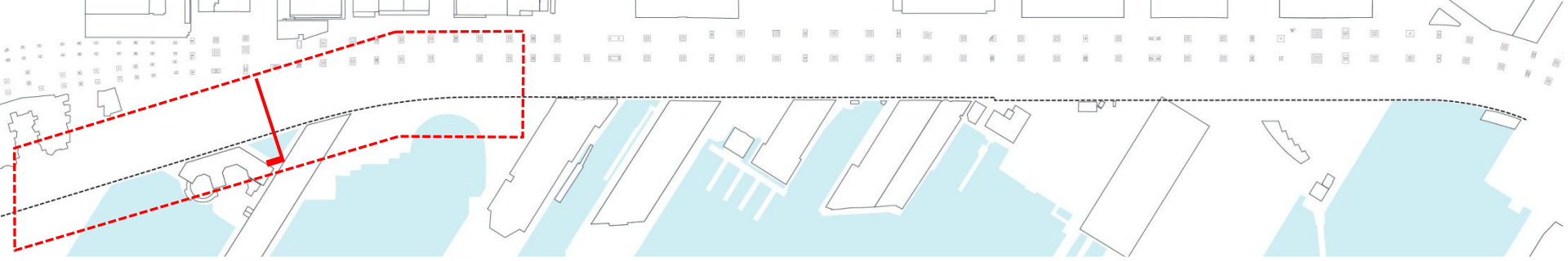
WORKING DRAFT

alt B – zone 03



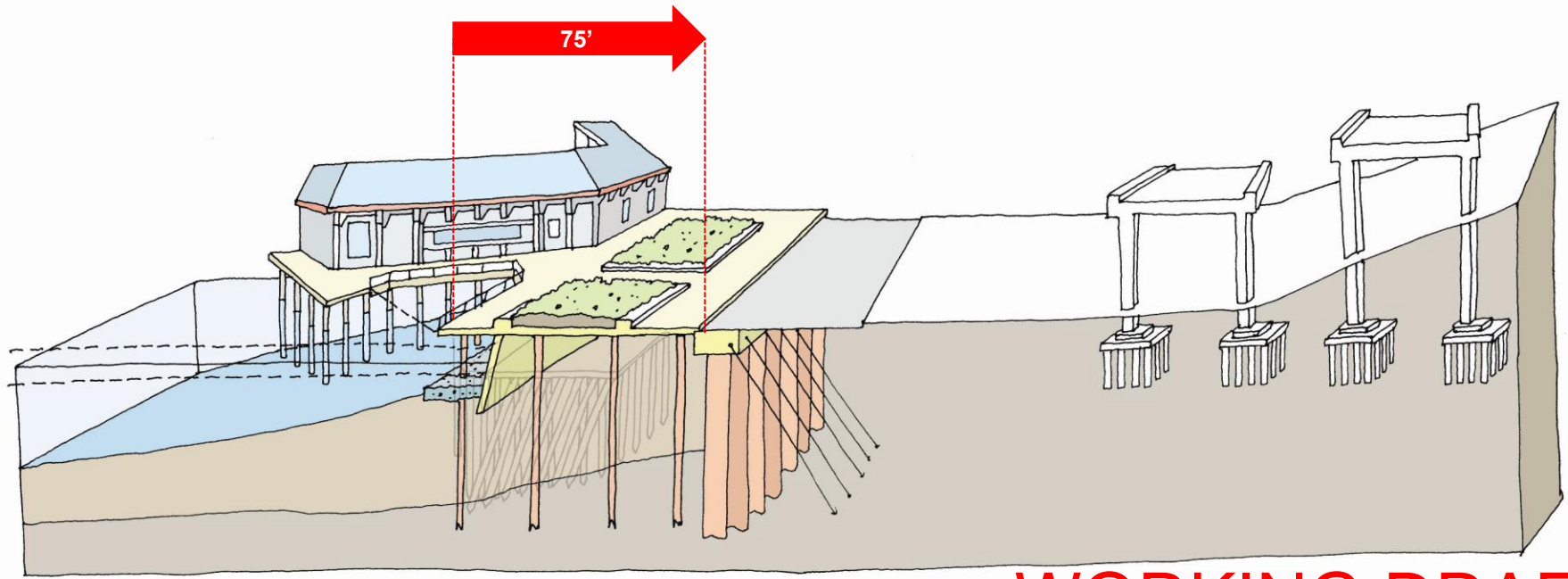
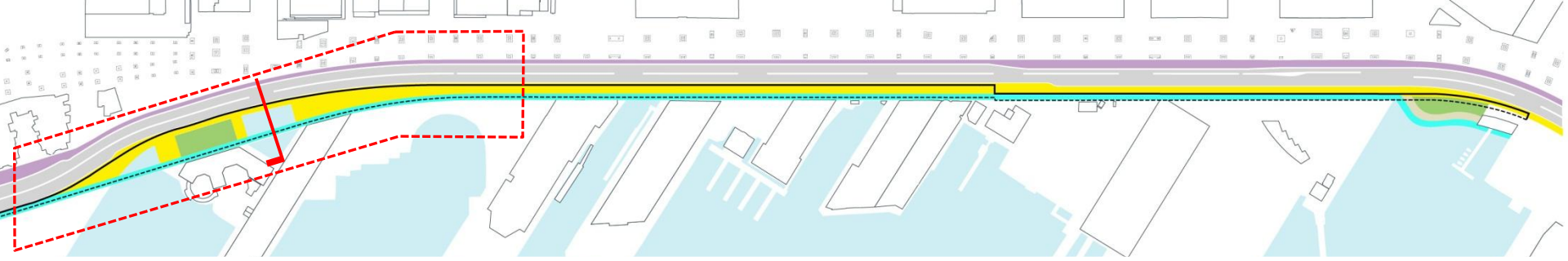
WORKING DRAFT

existing – zone 04



WORKING DRAFT

alt B – zone 04 (water)



WORKING DRAFT

alt B – zone 04 (land)

Comparing Alternatives

		Alternative	Zone 6 North Pier	Zone 5 Bell Harbor	Zone 4 Park/Aquarium	Zone 3 Commercial Piers	Zone 2 Ferry Terminal	Zone 1 Pioneer Square	
Wall Location	Ex		0'	0'	0'	0'	0'	0'	
	A		-9'	-9'	-9'	+3'	-15'	0'	
	B		-9'	-9'	-75'	-30'	-15'	-15'	
Nearshore Habitat	Aquatic	Ex	Minimal habitat	Habitat bench	Minimal habitat	Minimal habitat	Minimal habitat	<ul style="list-style-type: none"> Minimal habitat Advantageous bathymetry 	
		A	<ul style="list-style-type: none"> Cobble reef Substrate enhancement Habitat bench Light penetrating surface 	<ul style="list-style-type: none"> Habitat bench improvement Light penetrating surface 	<ul style="list-style-type: none"> Cobble reef Substrate enhancement Habitat bench Light penetrating surface 	<ul style="list-style-type: none"> Habitat bench Light penetrating surface 	<ul style="list-style-type: none"> Habitat bench Light penetrating surface 	<ul style="list-style-type: none"> Cobble reef Substrate enhancement 	
		B	Same as A	Same as A	Same as A with: <ul style="list-style-type: none"> Natural light Intertidal zone 	Same as A	Same as A	Same as A with: <ul style="list-style-type: none"> Improved habitat Intertidal zone Light penetrating surface 	
	Riparian	Ex	none	none	none	none	none	none	none
		A	Base planting	Base planting	Base planting	Base planting	Base planting	none	Base planting
		B	Additional planting opportunities	Additional planting opportunities	Additional planting opportunities	Additional planting opportunities	Additional planting opportunities	none	Additional planting opportunities
	Restored Public Amenities	Ex	<ul style="list-style-type: none"> Sidewalk 	<ul style="list-style-type: none"> Sidewalk Multi-use trail Public short-stay marina 	<ul style="list-style-type: none"> Sidewalk Multi-use trail Waterfront Park Pier 62/63 	<ul style="list-style-type: none"> Sidewalk Multi-use trail 	<ul style="list-style-type: none"> Sidewalk Multi-use trail Public ferry terminal 	<ul style="list-style-type: none"> Sidewalk Multi-use trail Washington St Boat Landing 	
		A	<ul style="list-style-type: none"> Restored sidewalk Potential early wins 	<ul style="list-style-type: none"> Restored sidewalk Restored multi-use trail Public short-stay marina Potential early wins 	<ul style="list-style-type: none"> Restored sidewalk Restored multi-use trail Waterfront Park (existing) Pier 62/63 (existing) Potential early wins 	<ul style="list-style-type: none"> Restored sidewalk Restored multi-use trail Potential early wins 	<ul style="list-style-type: none"> Restored sidewalk Restored multi-use trail Public ferry terminal Potential early wins 	<ul style="list-style-type: none"> Restored sidewalk Restored multi-use trail Restored Washington St Boat Landing Potential early wins 	
		B	Same as A	Same as A	Same as A	Same as A	Same as A	Same as A	Same as A

Next Steps and Contact Information

- **April 25:** Seattle City Council briefing
- **Ongoing:** Briefings, collaboration with Waterfront Seattle team, coordination with Army Corps

Contact Information:

- **Email:** seawall@seattle.gov
- **Website:** <http://www.seattle.gov/transportation/seawall.htm>
- **Phone:** Stephanie Brown, SDOT: 206-386-4635
Jennifer Wieland, SDOT: 206-733-9970

Back Pocket

Setting the Context for Habitat Enhancements

- ~60% overwater coverage
- Limited plant life and associated invertebrates under piers
- Increased productivity in naturally lighted areas
- Habitat is low to moderate quality overall

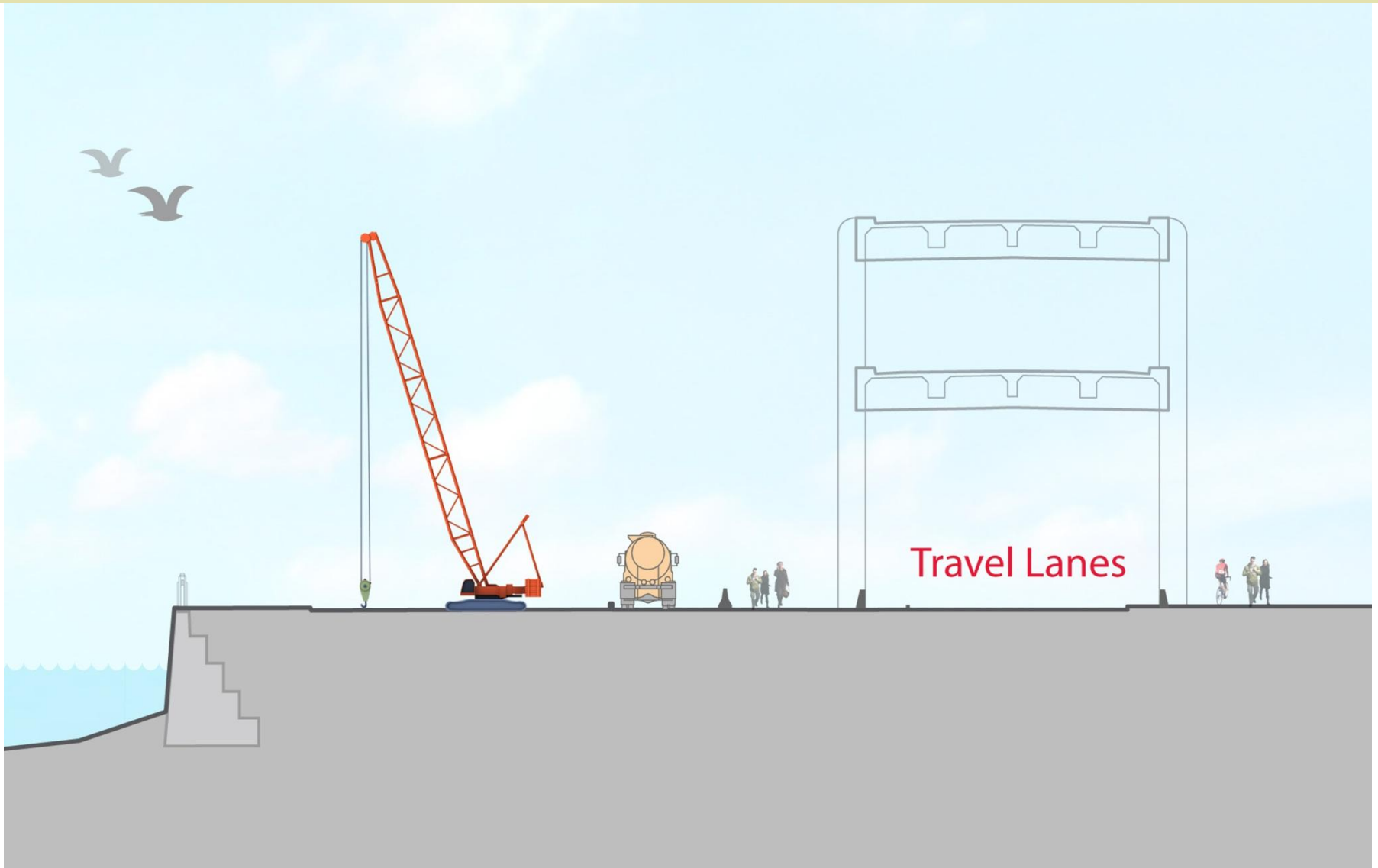


Habitat in lighted areas

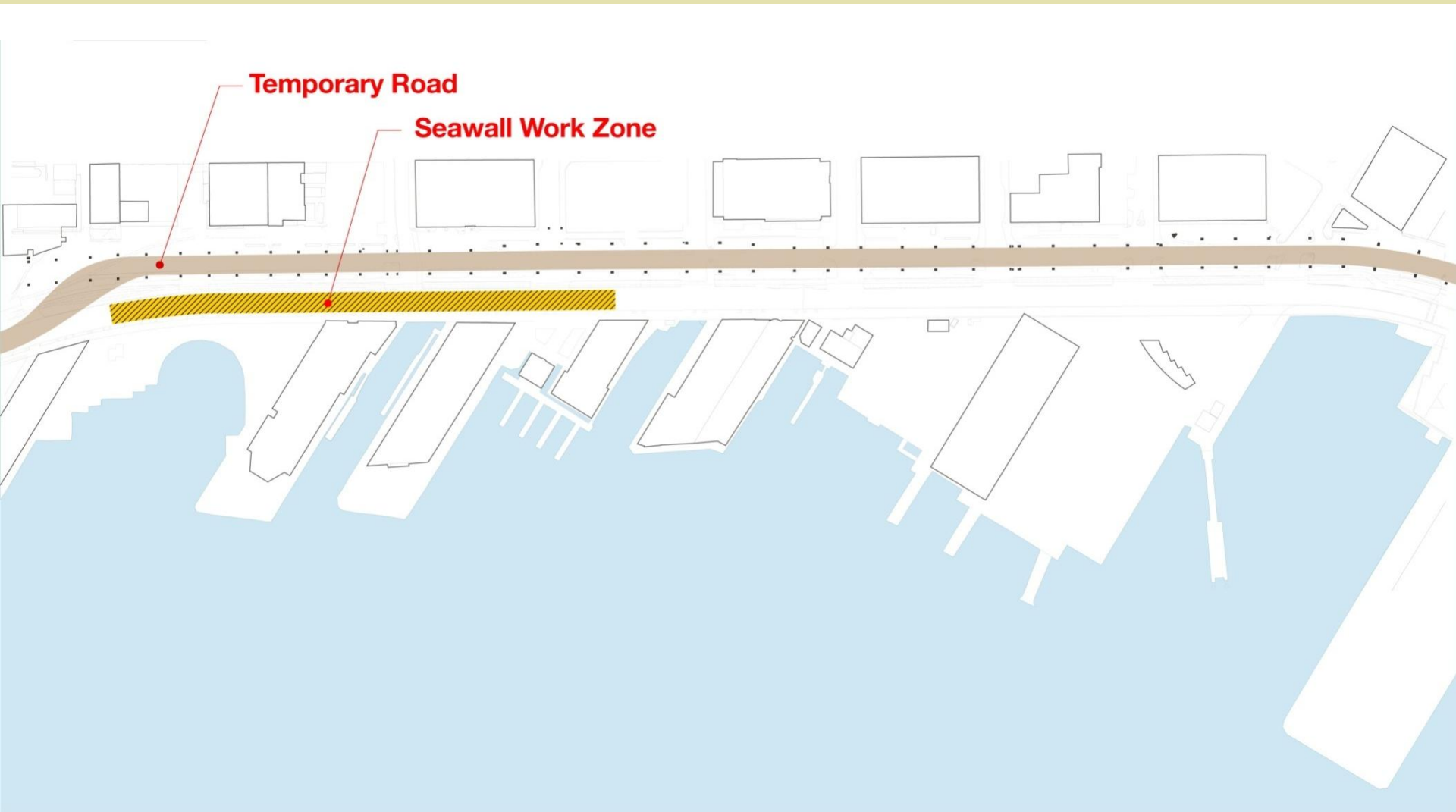


Habitat in dark areas under piers

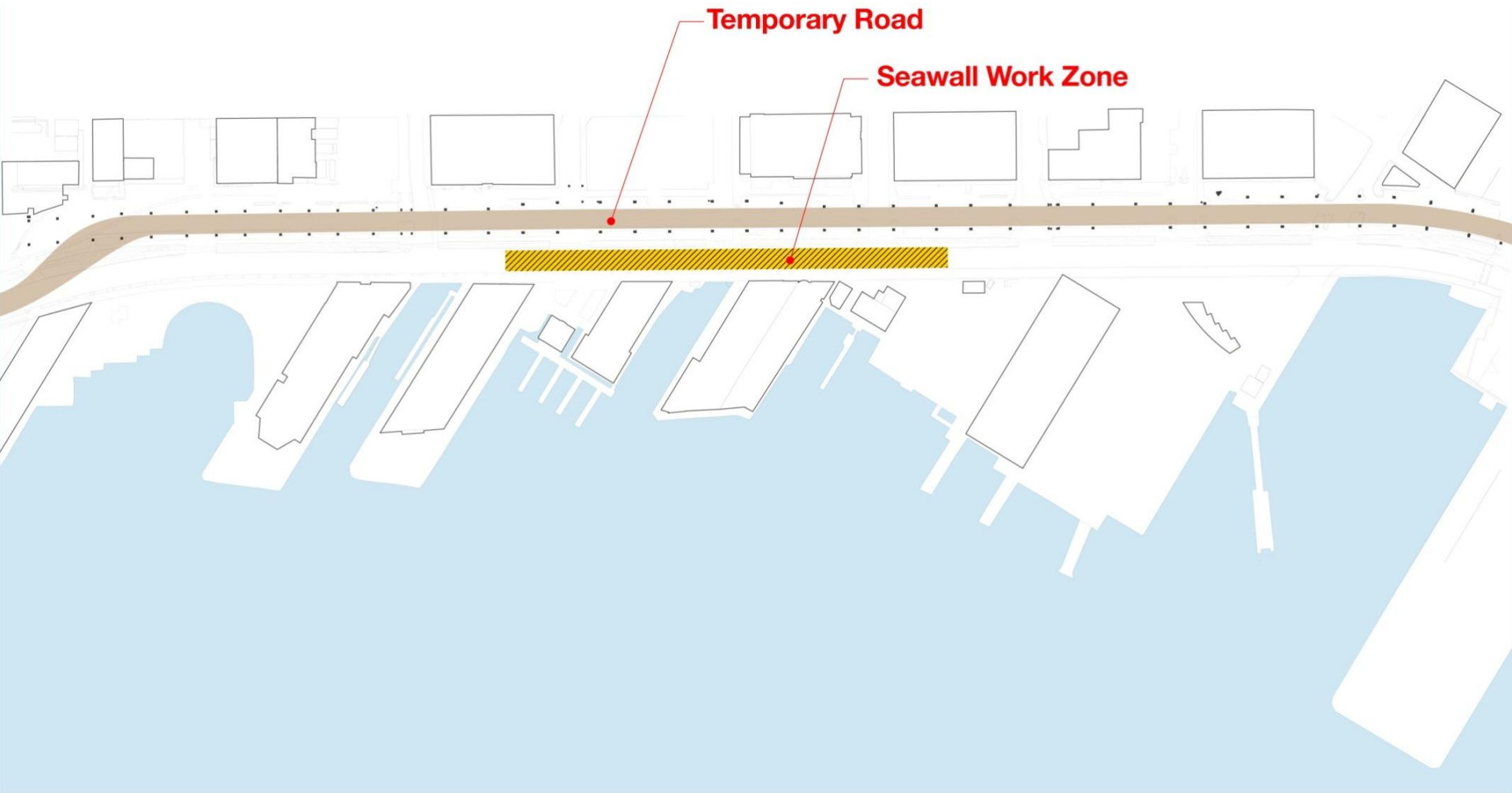
Potential Construction Roadway Configuration



Potential Temporary Road: Phase 1



Potential Temporary Road: Phase 2



Potential Temporary Road: Phase 3

