

NE 130th Street Infill Station

*Seattle Design Commission
30% Concept Design Review*

April 16, 2020

Agenda

- NE 130th Street Infill Station Overview
- Community Outreach
- Site Condition & Urban Analysis
- Design Concept
- Questions/Comments

Goals and Overview

Goals

- Station added as infill in 2016 ST3 voter package
- Provides access to light rail in growing community
- Provides access for all modes of transportation
- Enhance station identity with art and finishes
- Minimize impacts to Lynnwood Link Extension and its customers

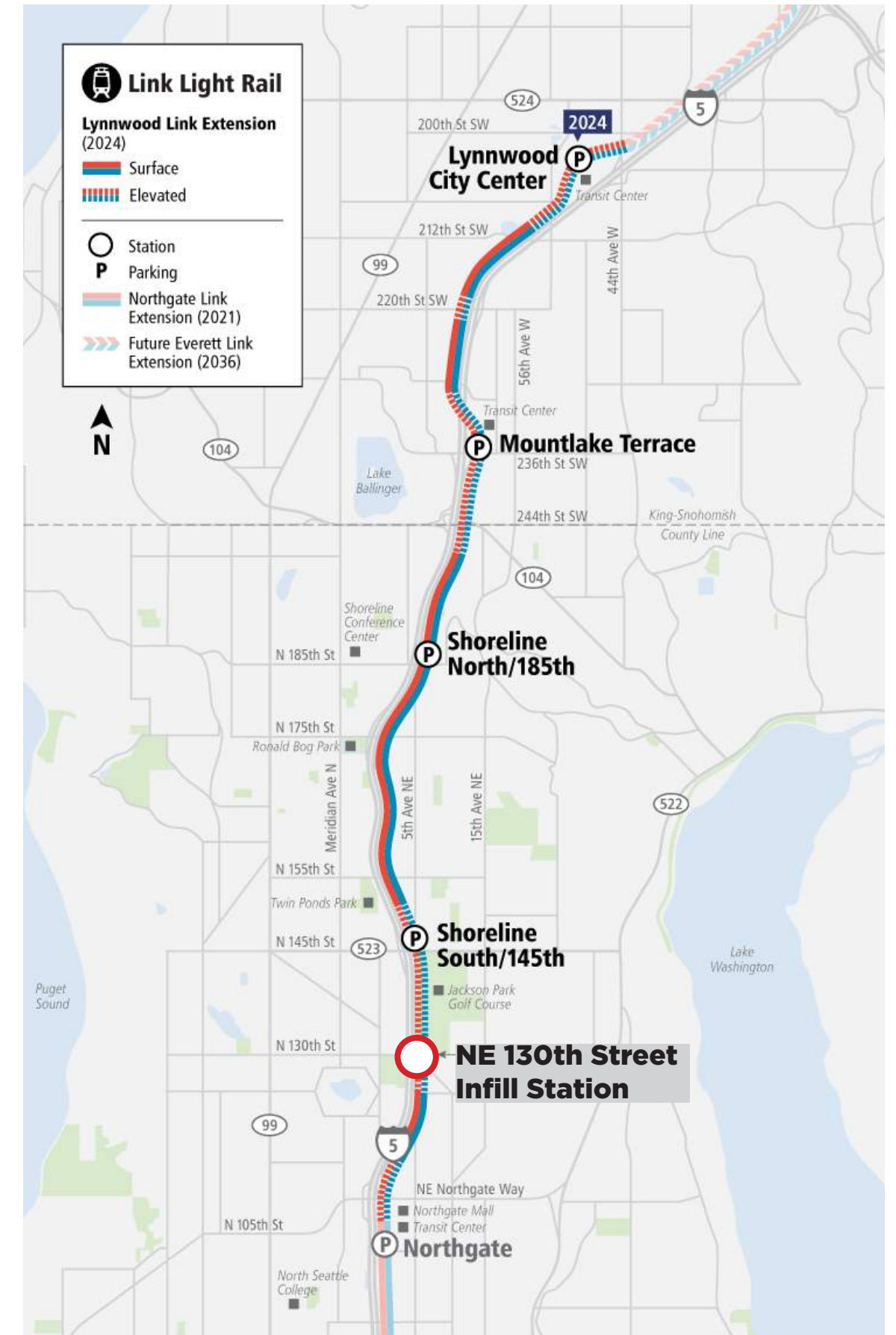
Overview

- Station located at 5th Ave NE and NE 130th St
- Elevated side-platform station
- Estimated 3,400 daily boardings
- Travel time: Westlake, 15 min; SeaTac/Airport, 53 min

Overview Continued

Infill Station

- Preferred alternative in LLE final EIS
- Infill station on Lynnwood Link Extension
- Timing in ST3 Plan - start 2024, open 2031
- \$144M project Estimate
- Challenges with building as infill
 - Sept. 2018 accelerated preliminary engineering
 - Feb. 2020 accelerated final design
 - *Board decision in Q2 2021 on construction and opening*



Challenges of Infill Construction

Over 60k daily riders affected, nearly 90% from Snohomish and North King subareas

- Potential system-wide delays could affect many more riders
- Service delays due to single-tracking
- Restricted construction window – nighttime construction and higher cost
- Repeated neighborhood impacts
- Mitigation expenses



Environmental

- NE 130th St Infill station alternative evaluated in LLE 2015 Final EIS
- Current design generally consistent with Final EIS
 - Added vehicle turn-around loop
 - Selected side platform station
- Station located in EIS-analyzed area; WSDOT and SDOT ROW
- Additional environmental review not needed

Partner Collaboration

- Collaborated on station design throughout 2019
 - 3 Design workshops
 - 3 Traffic Analysis workshops
 - 2 Value engineering sessions
- Station access points
 - Paratransit stop location
 - Bus stop locations
 - Street and access improvements
 - Traffic analyses



Community Outreach

- **Seattle/Shoreline Open House** – *Feb 26, 2019*
- **Seattle Station area planning workshop** – *Mar 13, 2019*
- **Seattle Station area planning workshop** – *Sept 28, 2019*
- **ST Board briefing** – *January 9, 2020*
- **ST System Expan. Committee** – *February 13, 2020*
- **ST Board Meeting** – *February 27, 2020*



“I would strongly urge you to vote for the speeded up NE 130th station plan!”

“Will pedestrians be able to access the station on foot?”

Community Outreach

Goal: Consult and inform general public

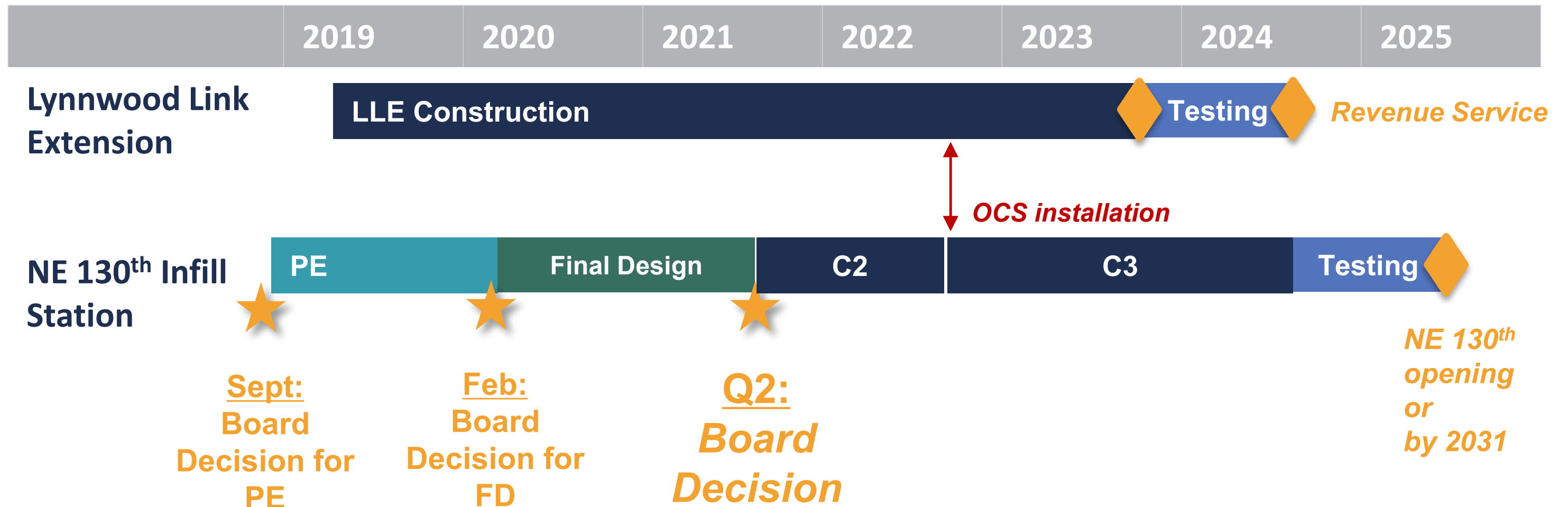
- Project updates via the LLE project listserv, over 9,000 subscribers
- Participate in City of Seattle Station Area Planning events
- Attend community fairs & events to distribute information & gather input
- Solicit feedback via online open houses, LLE Facebook, email, social media, post cards, and flyers
- Host open house for 60% and 90% design in Q3 and Q4*

Target audiences: Neighborhood groups; Bike and pedestrian community; residents adjacent to NE 130th station

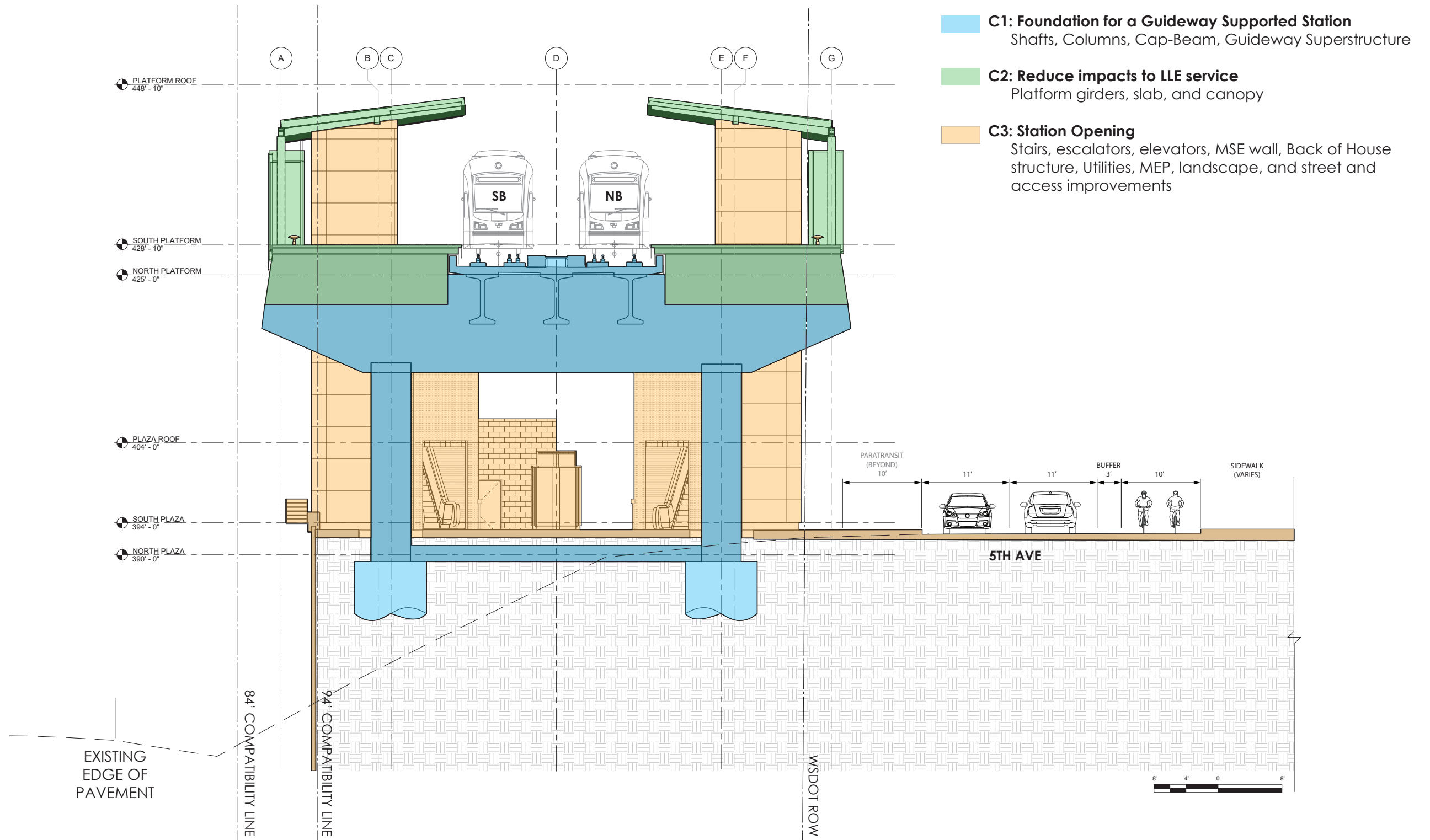
*May be canceled due to Covid-19

Project Schedule

- Objective is alignment of NE 130th with LLE schedule
- Q2 2021, Board to decide when station will open



Project Phasing



Zoning Information & Neighborhood Context

Neighborhood

- Single Family Residential SF-7200
- Multi-Family Residential NC1-55 (M)
- Mixed-Use: Residential / Commercial LR3 (M)

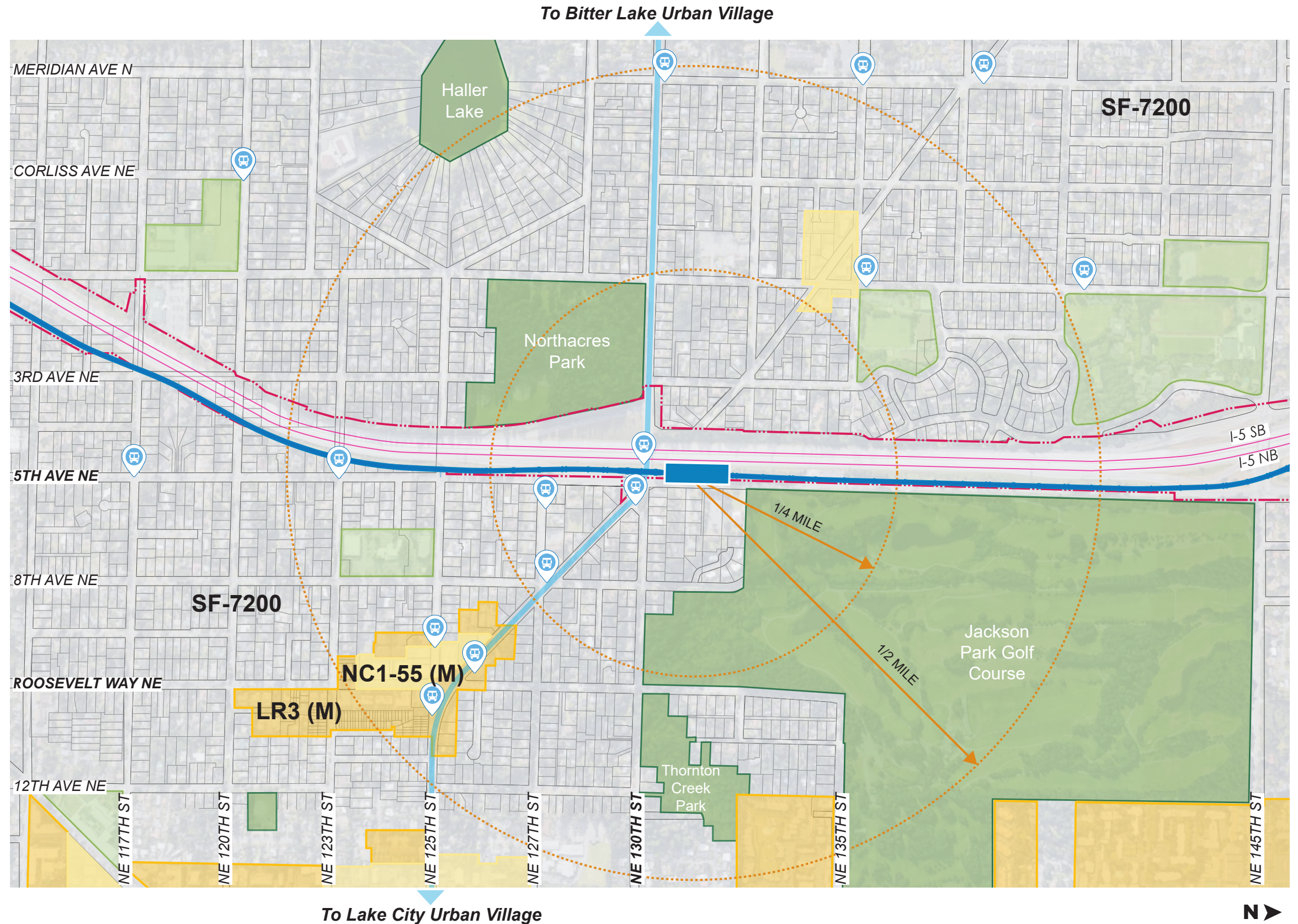
Location & Access

- WSDOT Right of Way
- Parallel to 1-5
- Lynnwood Link Light Rail
 - South Northgate Station
 - North 145th Station
- Route to Nearby Urban Villages
- Local Bus Routes
- Relocation of bus stop 242 & 243 adjacent to station

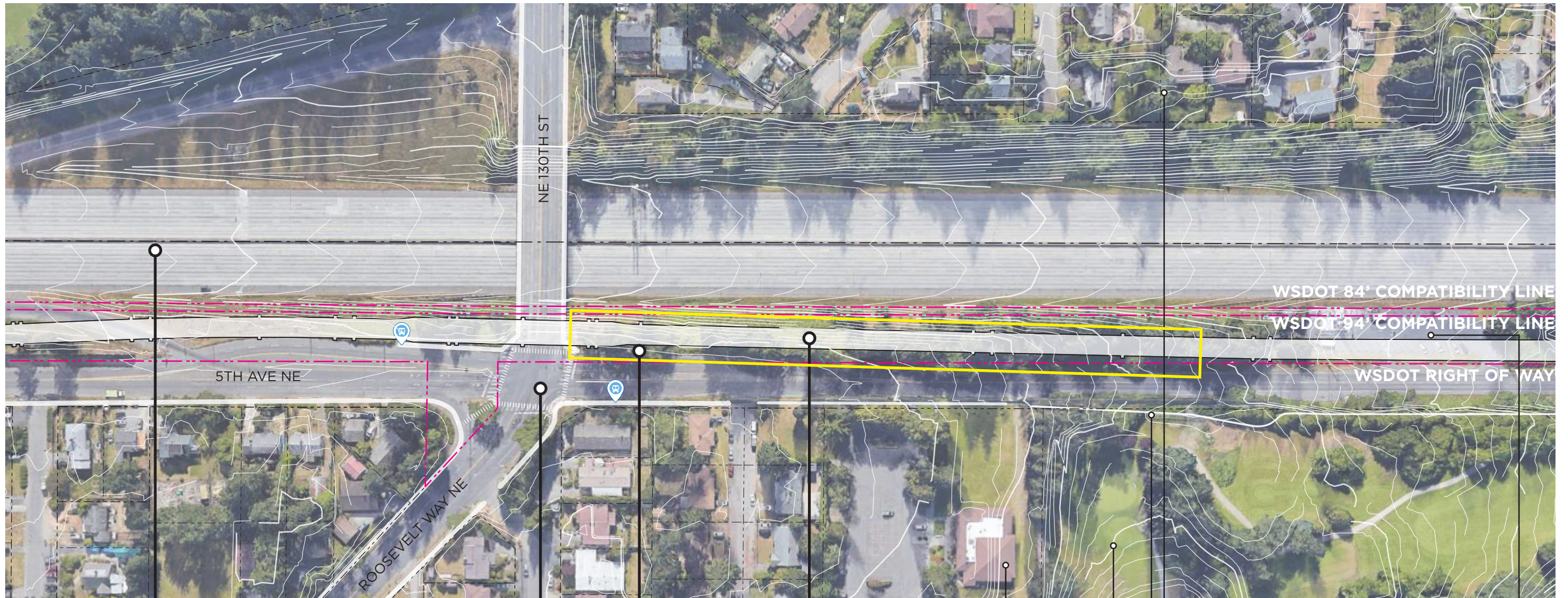
Local Amenities

- K-12 Schools located with 1 mile radius
 - Ingraham High School
 - Lakeside School
 - Lakeside Middle School
 - Seattle Jewish Community School
 - Pinehurst K-8 School

- Parks and Recreation



Site Analysis / Existing Conditions



Interstate 5

Site parallel to 1-5
 Adjacent to 1-5 NB off ramp
 Adjacent to 1-5 SB on ramp
 Existing NE 130th St bridge

Pedestrian Experience

Limited sidewalk network
 NE 130th St & 5th Ave NE
 intersection sole crosswalk
 within 1/4 mile radius

Guideway

Lynnwood Link Guideway
 currently under construction
 with predetermined elevation

Grading

29' longitudinal grade difference
 12' - 24' transverse grade
 difference

Adjacent Uses

Single Family Residential
 Jackson Park Trail
 Jackson Park Golf Course
 North Seattle Nazarene Church
 5th Ave NE/NE 133rd St Park &
 Ride



Existing Site Photos



1. South of NE 130th St & 5th Ave NE intersection



2. East of NE 130th St & 5th Ave NE intersection looking toward project site



3. Intersection of NE 131st Pl & 5th Ave NE adjacent to project site



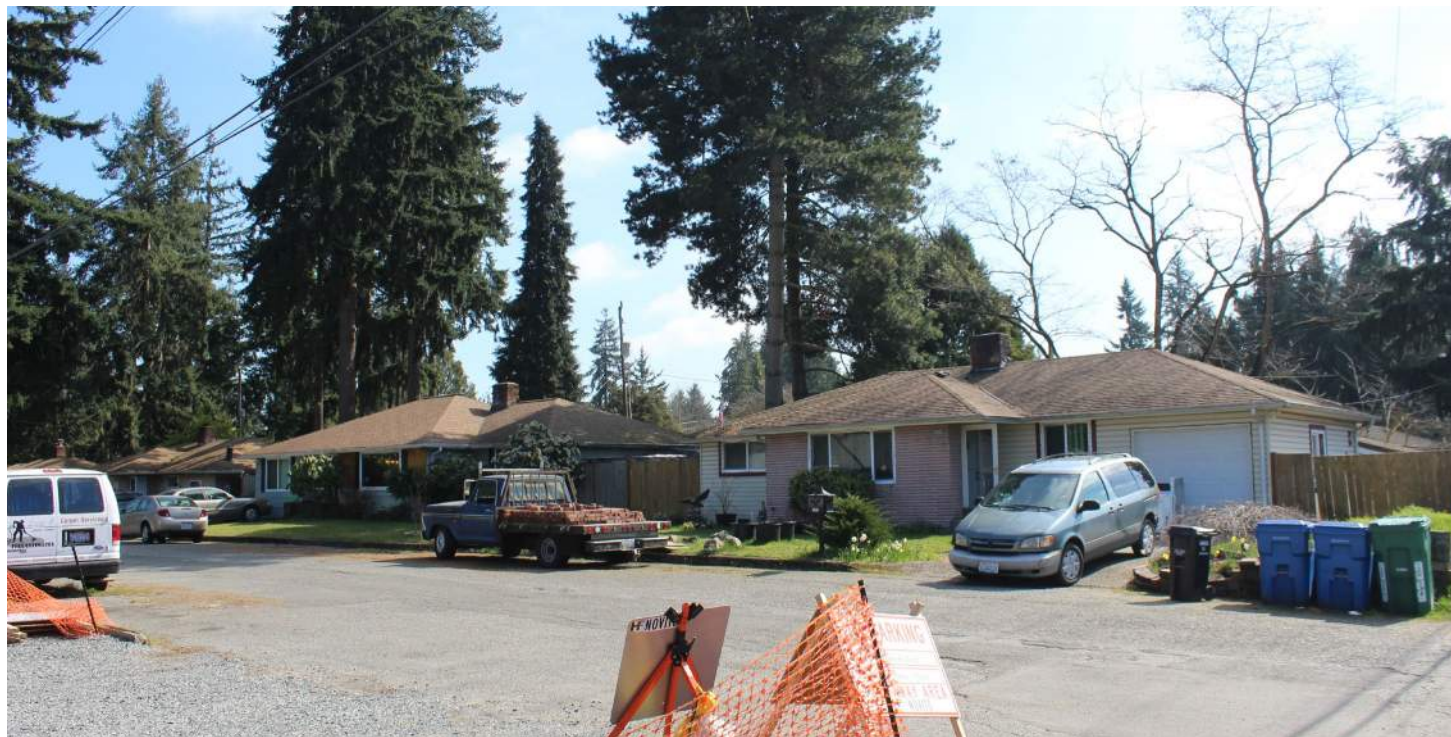
Existing Site Photos



4. South site corner from NE 130th St Bridge



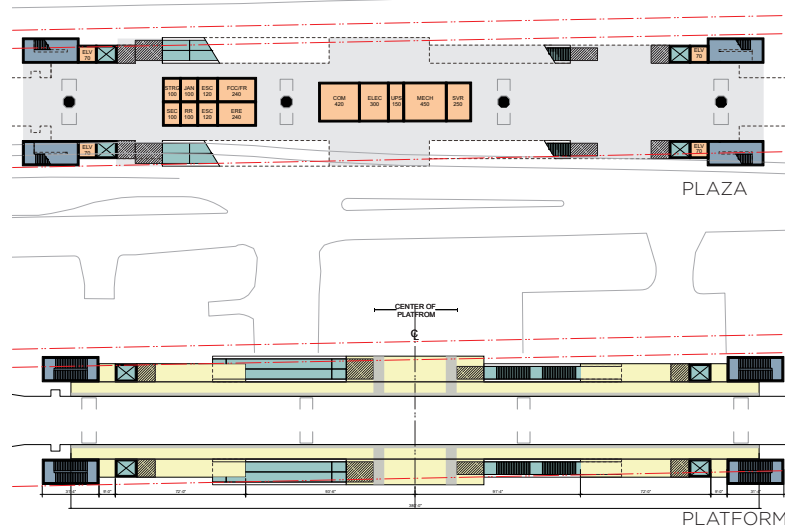
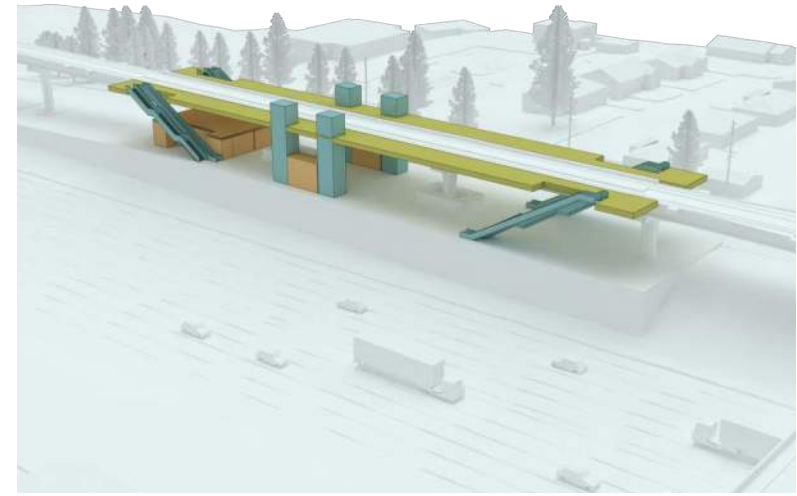
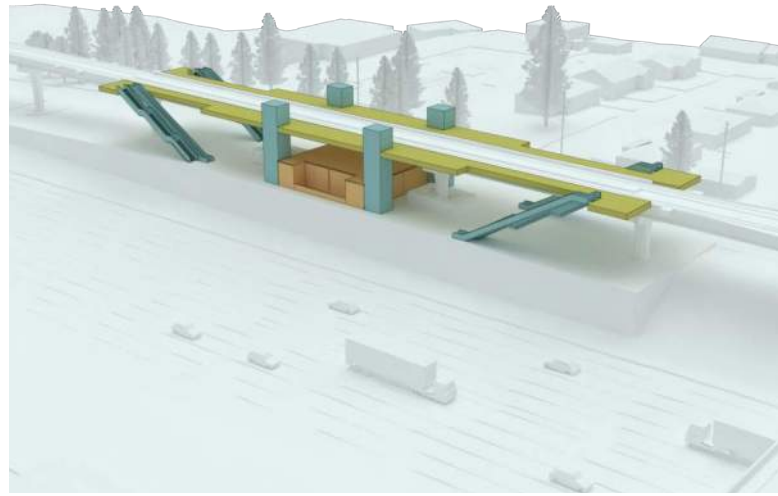
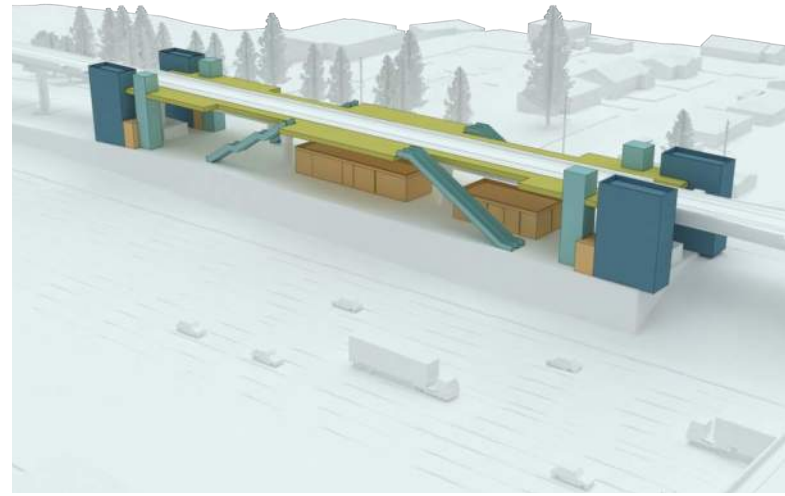
5. West of NE 130th St & 5th Ave NE intersection looking toward site



6. Single family residence near project site



Workshops & Early Design Options

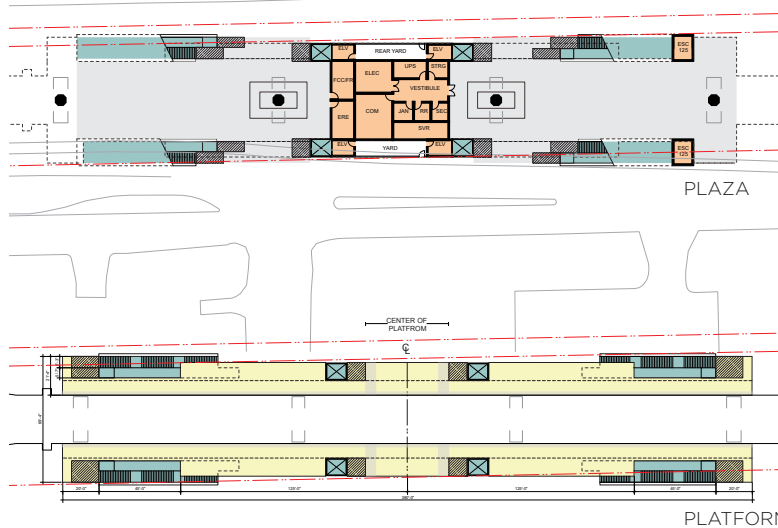


SCHEME A

2 BUILDINGS

SOUTH ENTRANCE
UP / ENTRANCE
ELEVATOR
EGRESS STAIR

NORTH ENTRANCE
PUBLIC STAIR
ELEVATOR
EGRESS STAIR

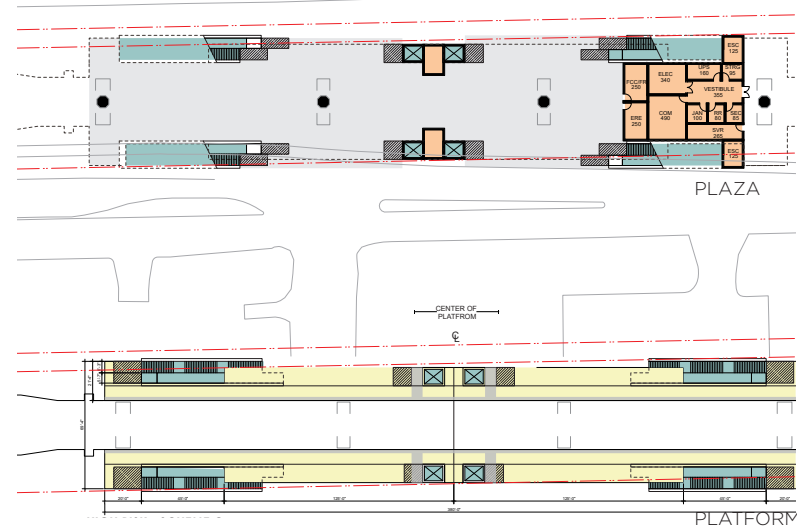


SCHEME B

1 BUILDINGS

SOUTH ENTRANCE
UP / ENTRANCE
ELEVATOR
PUBLIC / EGRESS STAIR

NORTH ENTRANCE
PUBLIC STAIR
ELEVATOR
EGRESS STAIR



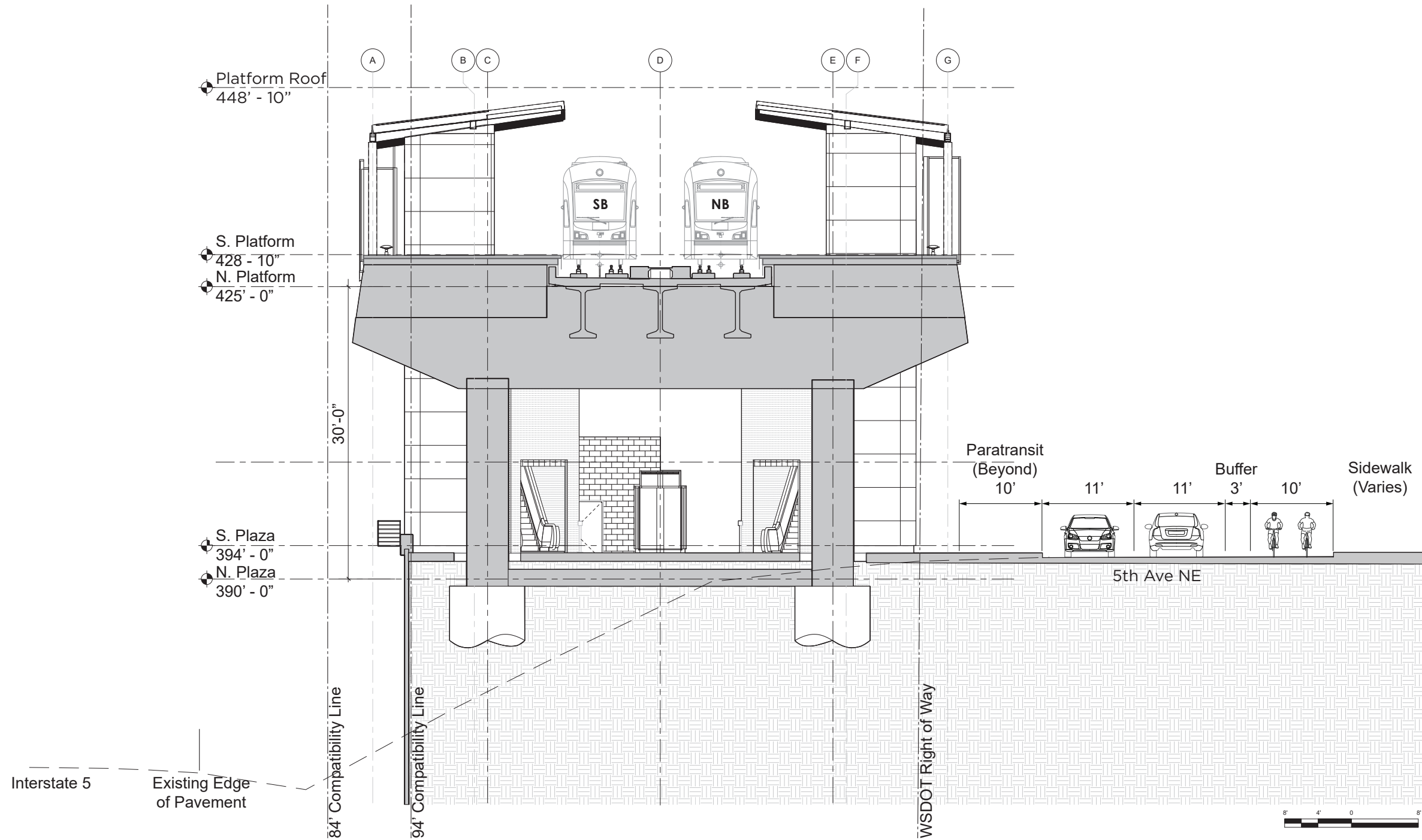
SCHEME C

1 BUILDING

CENTRAL ENTRANCE
UP ESCALATOR
PUBLIC / EGRESS STAIRS
ELEVATOR

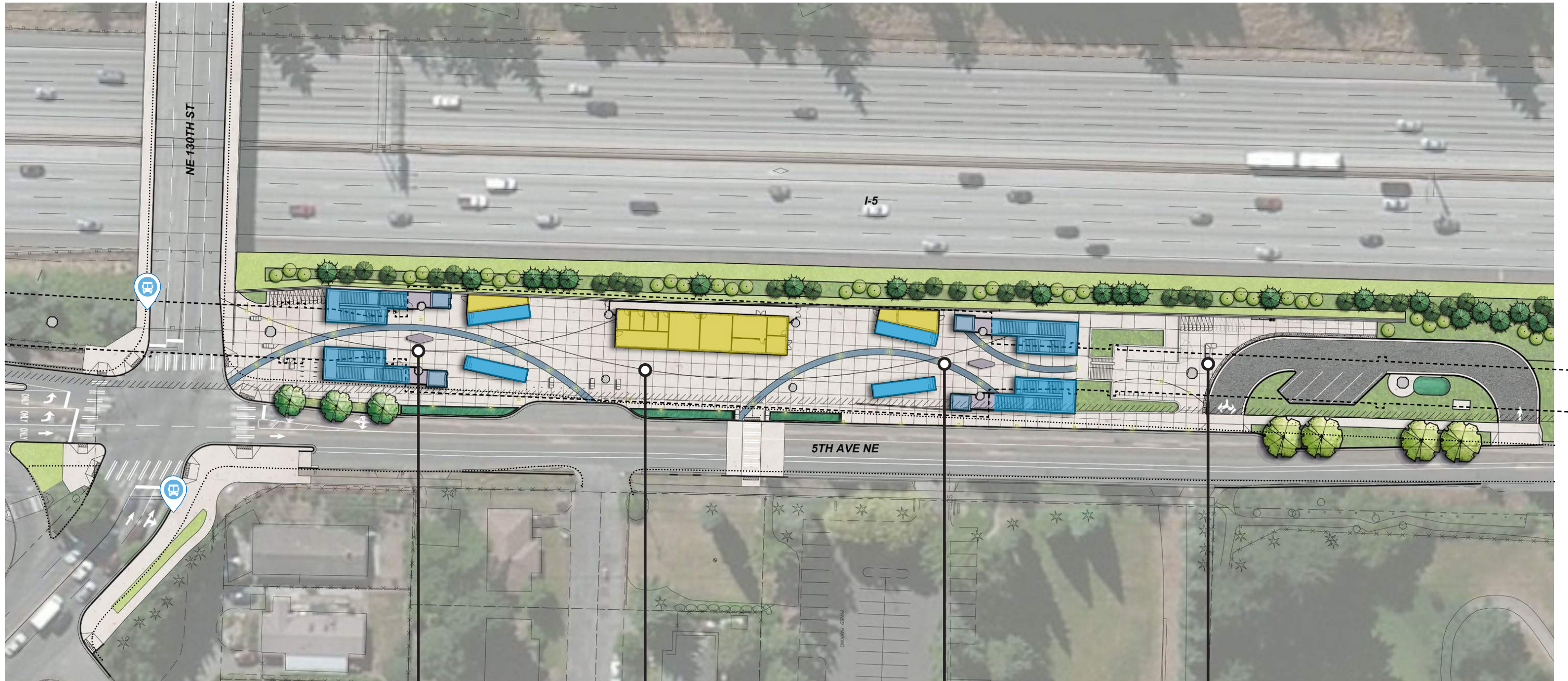


Workshop Summary & Constraints



Design Concept

Station Components



- Vertical Circulation
- Ancillary Space
- Information & Ticketing
- Guideway Overhead
- Existing Curb
- B Proposed Bus Stop

South Plaza Lobby
 Public Stair
 Elevator
 Escalator
 Ticket Vending Kiosk

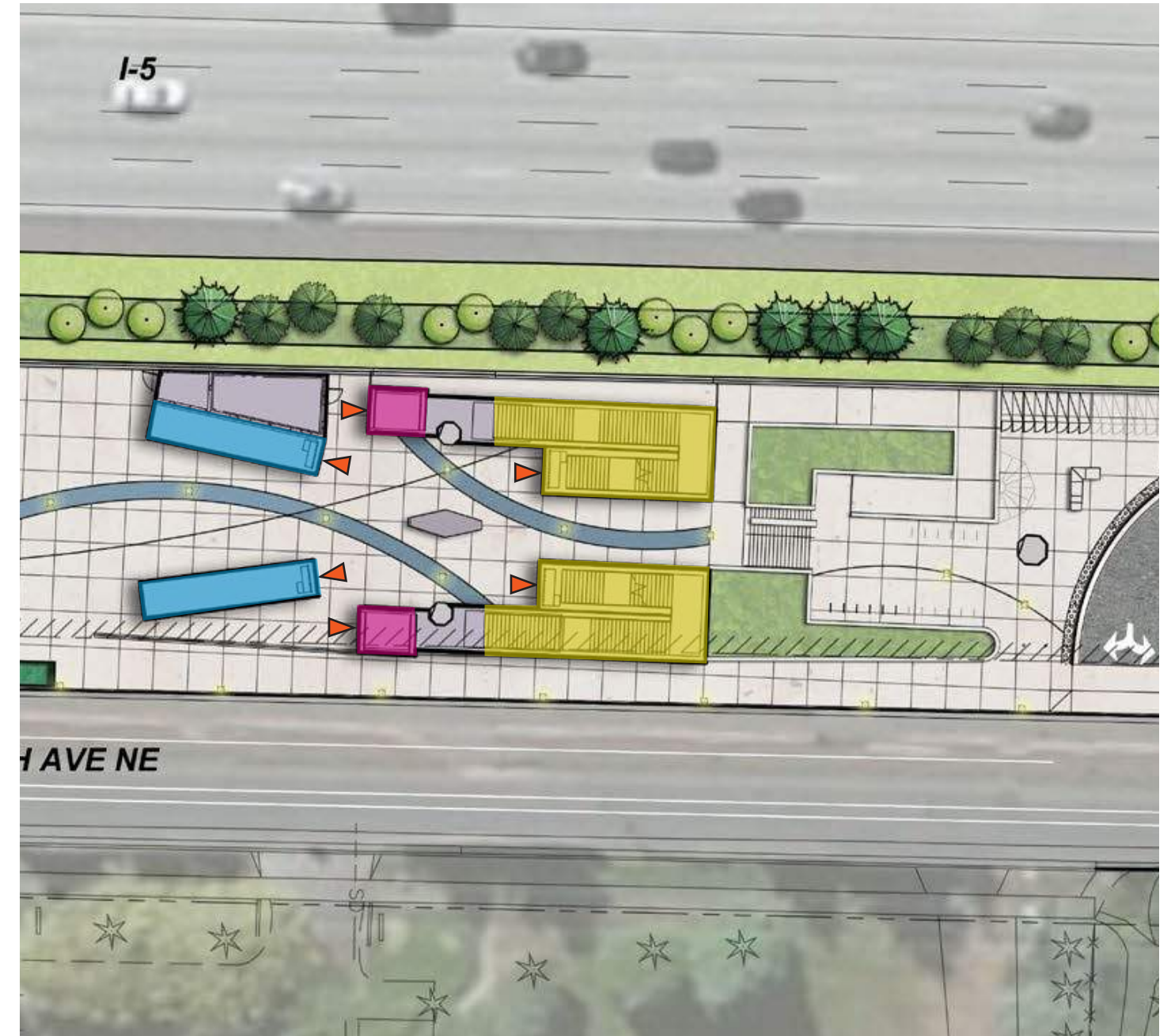
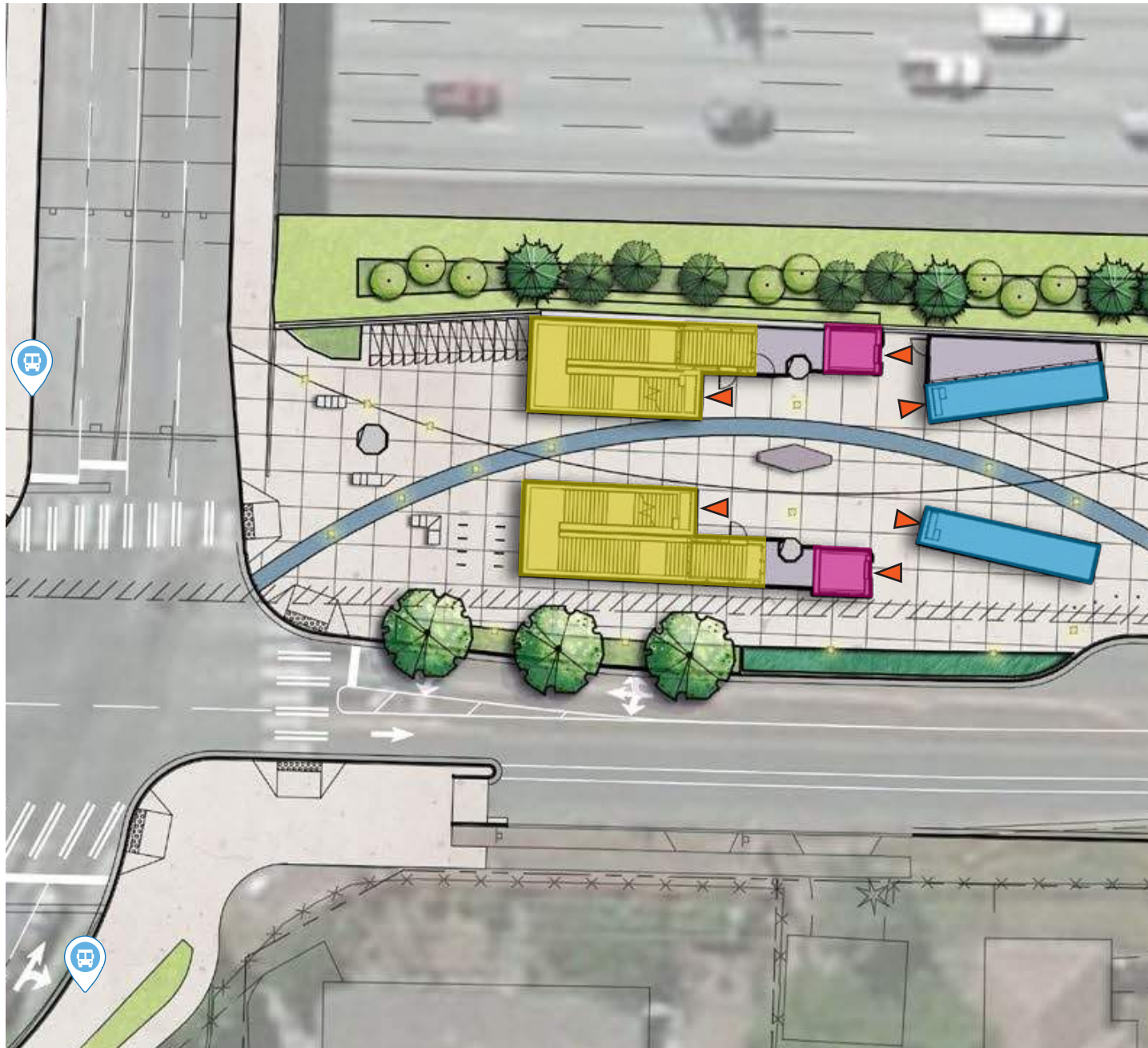
Center of Plaza
 Ancillary Building
 Paratransit Drop-Off

North Plaza Lobby
 Public Stair
 Elevator
 Escalator
 Ticket Vending Kiosk

Drop-Off Loop
 Passenger Pick-up & Drop-off parking
 ST Personnel & Service Parking
 ADA Ramp
 Entrance Stair



Enlarged Lobby Plans



- Stair
- Elevator
- Escalator
- Entrance
- B Bus Stop

South Plaza Lobby

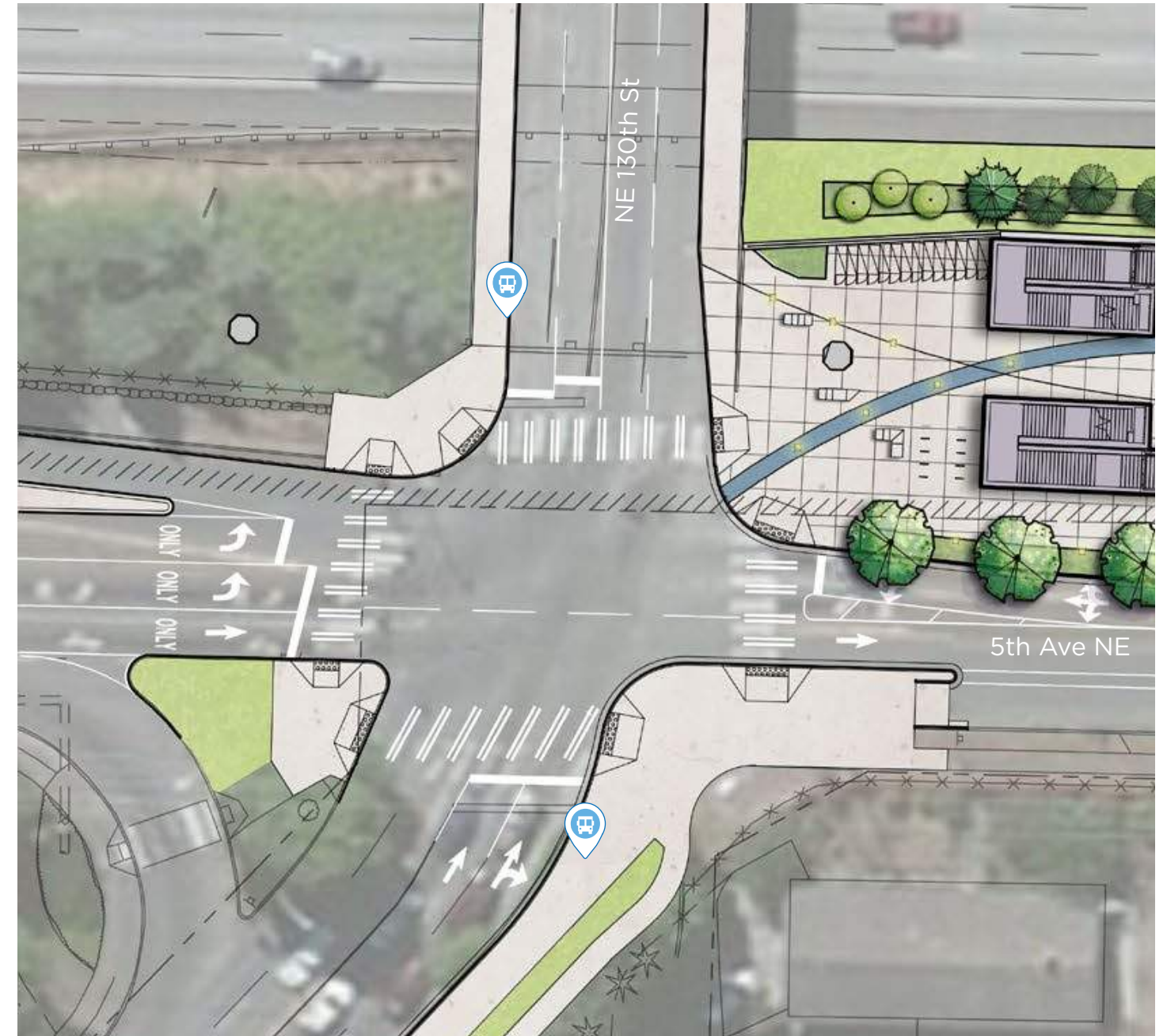
North Plaza Lobby



NE 130th St & 5th Ave NE Intersection



Existing Channelization

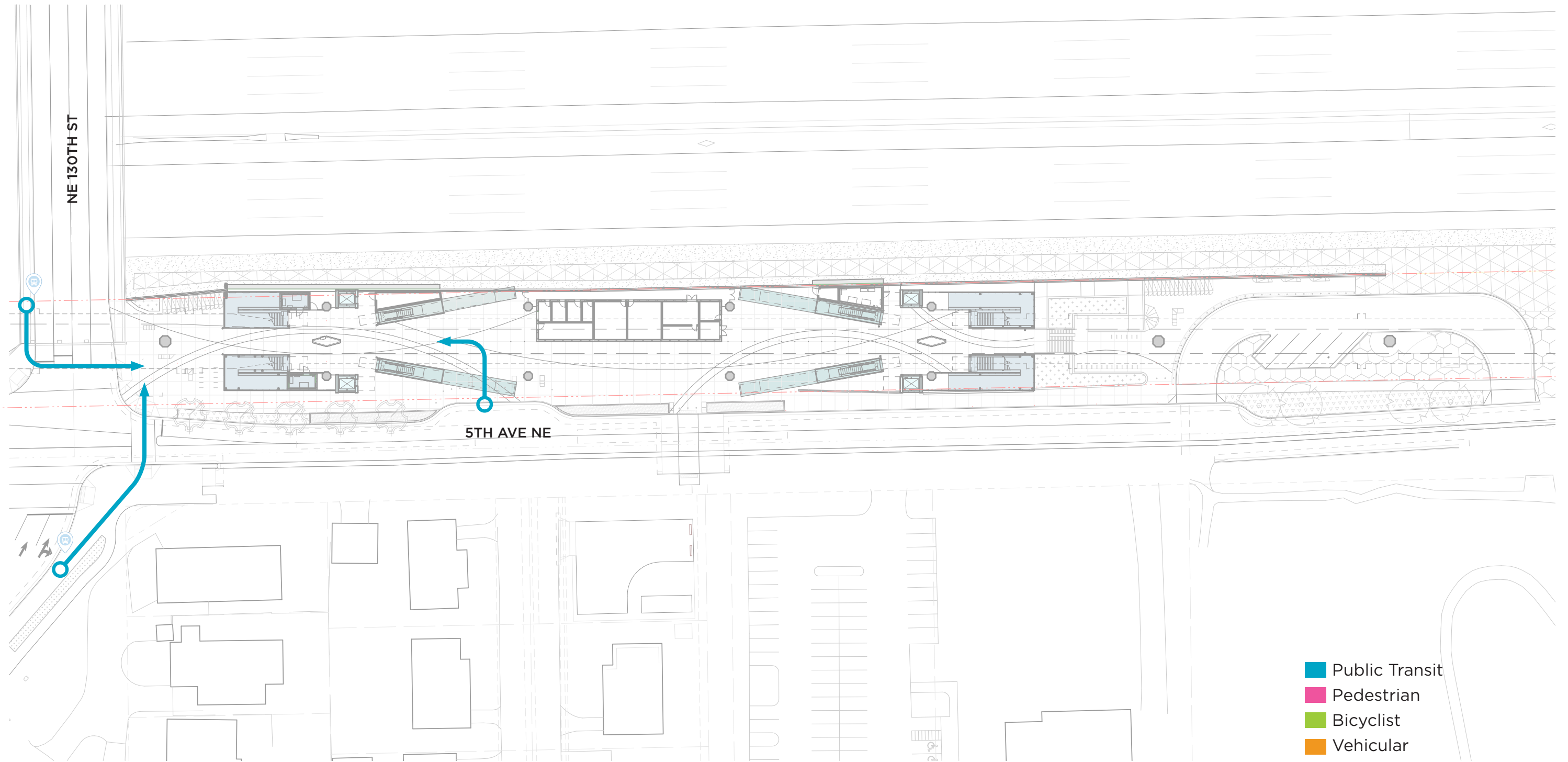


Proposed Channelization

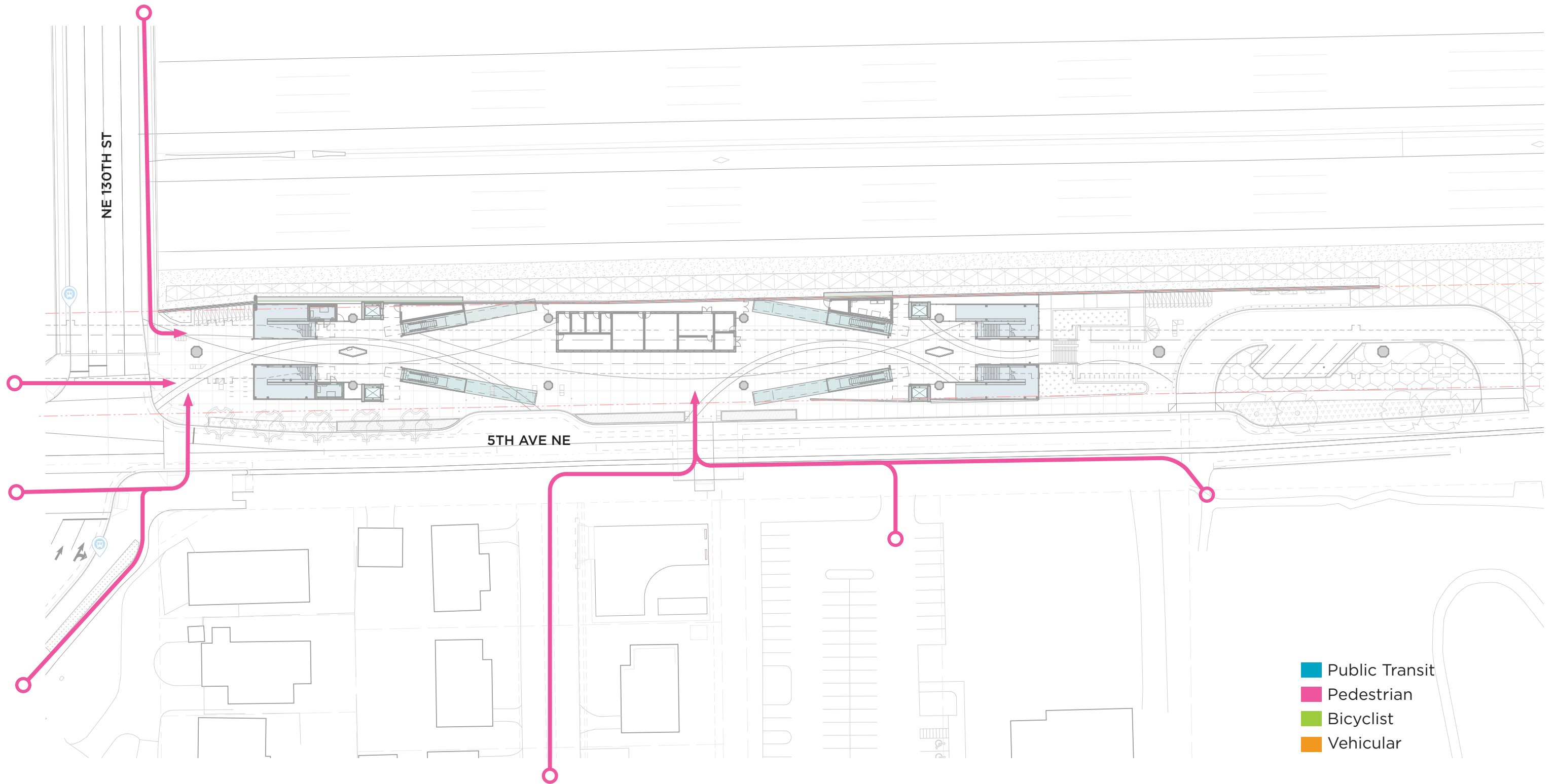
5th Ave NE to be one-way northbound after drop-off loop



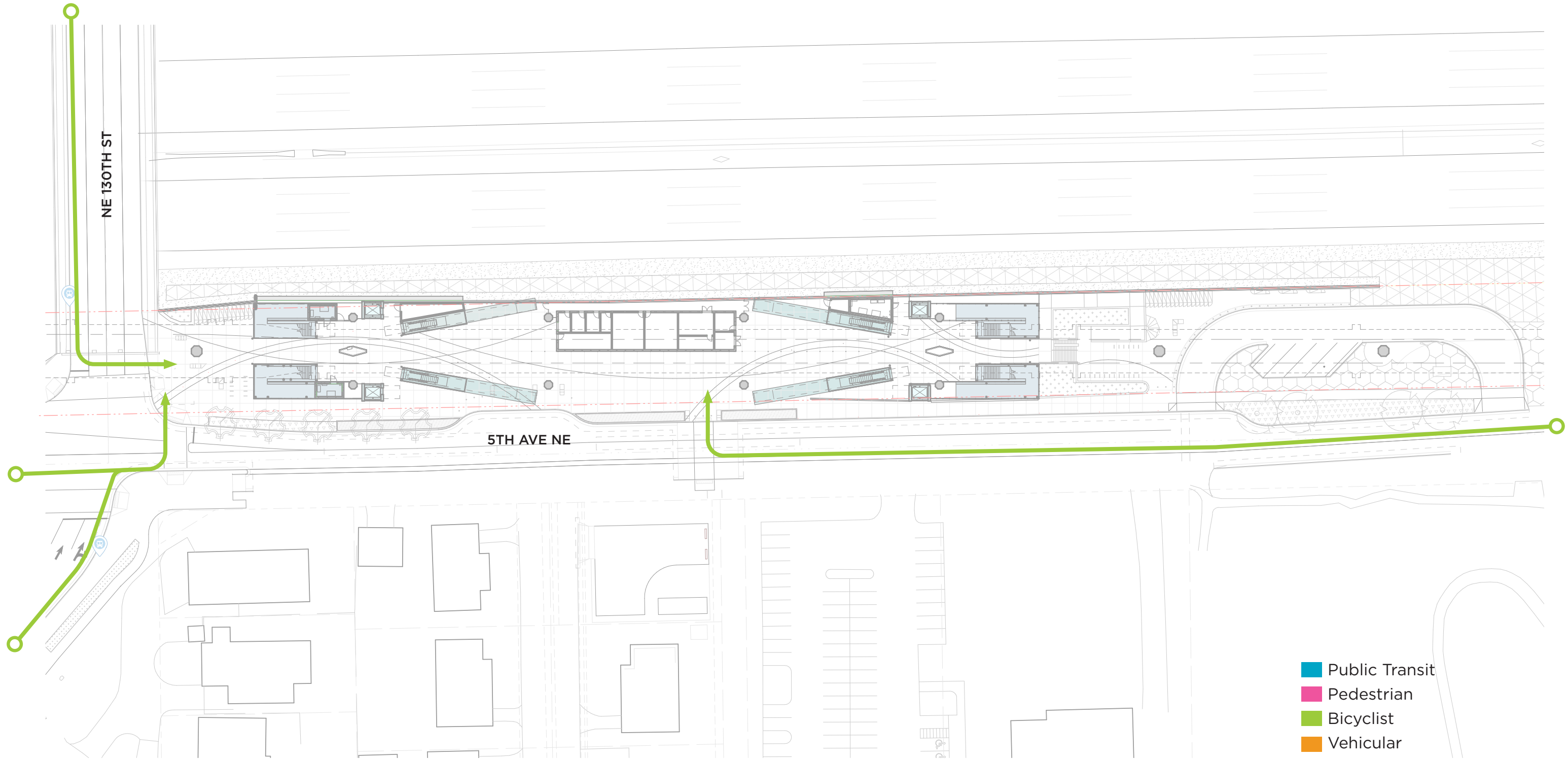
Site Access - Public Transit



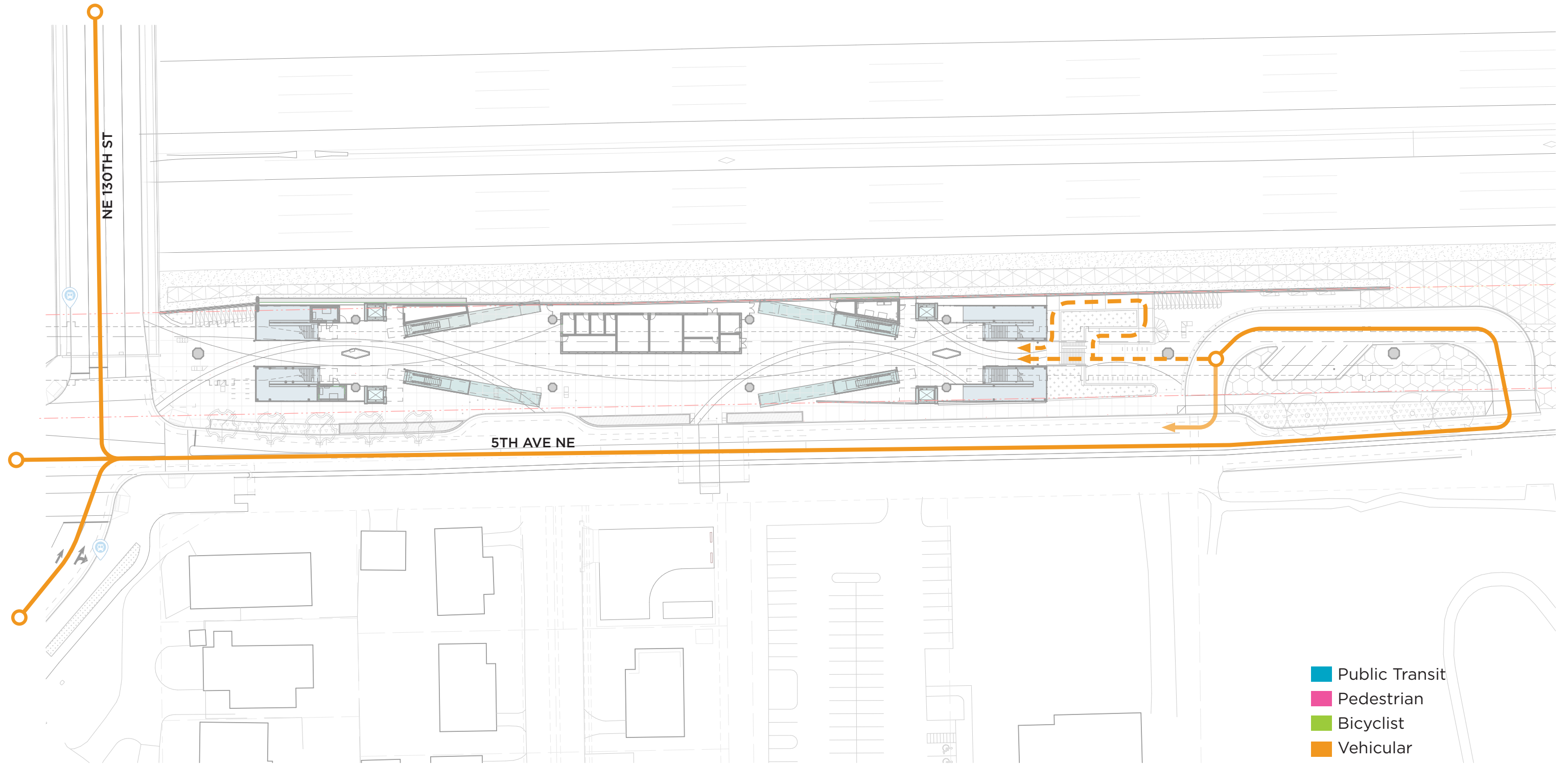
Site Access - Pedestrian



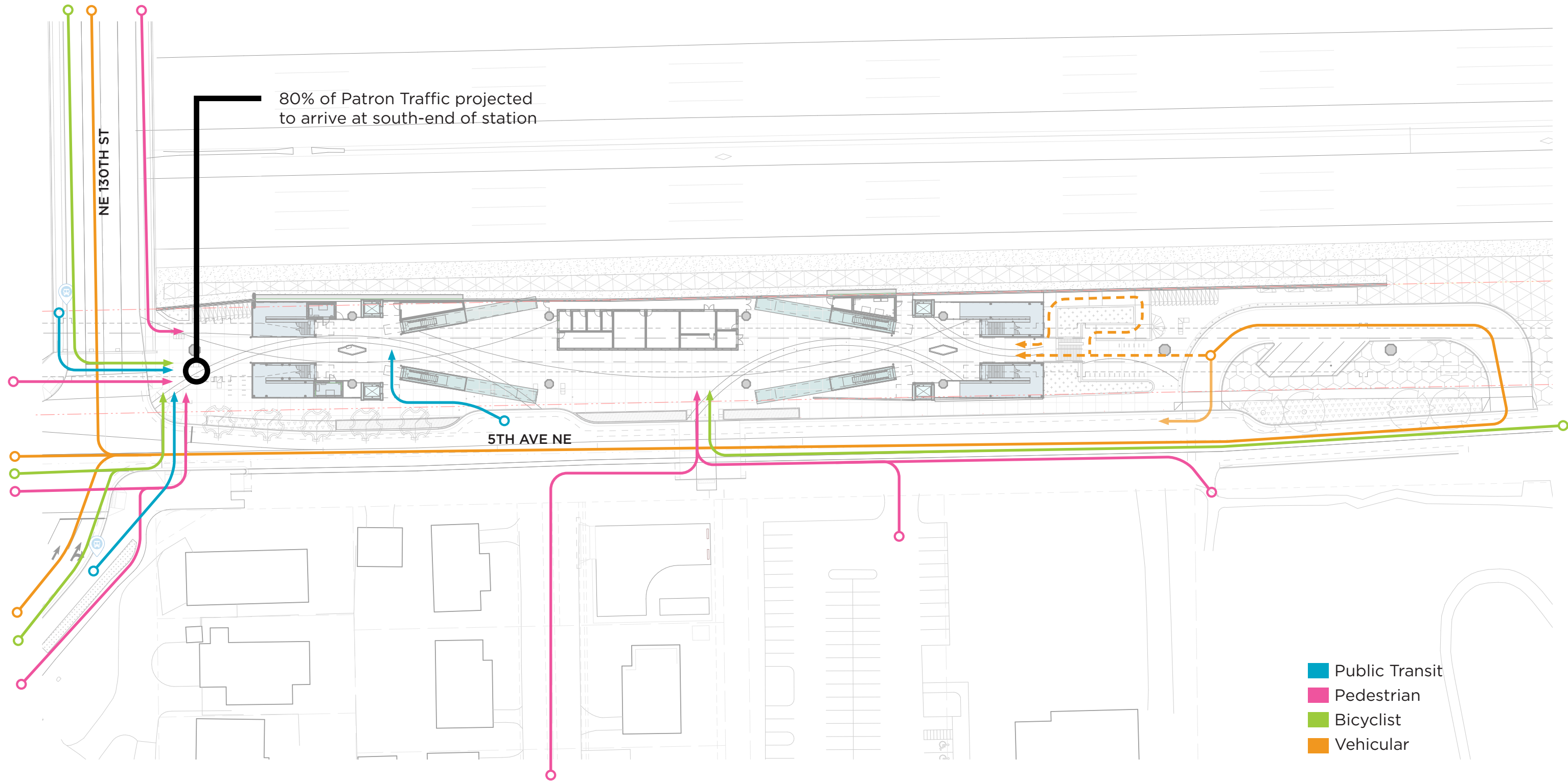
Site Access - Bicyclist



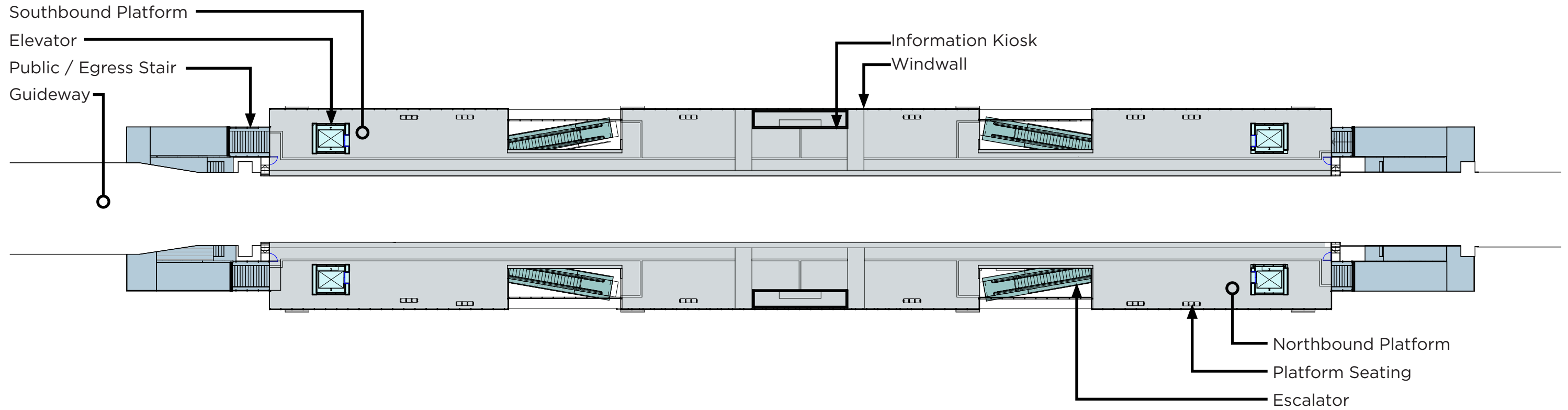
Site Access - Vehicular



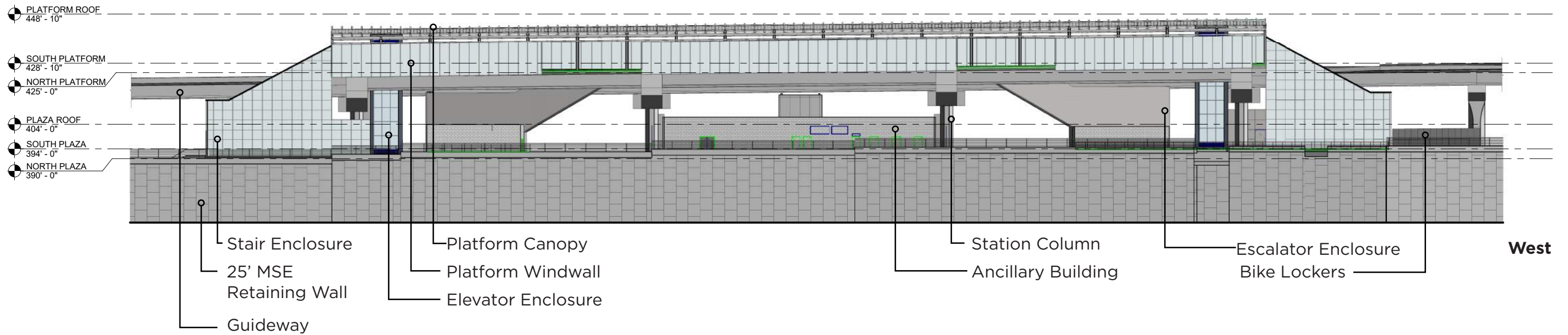
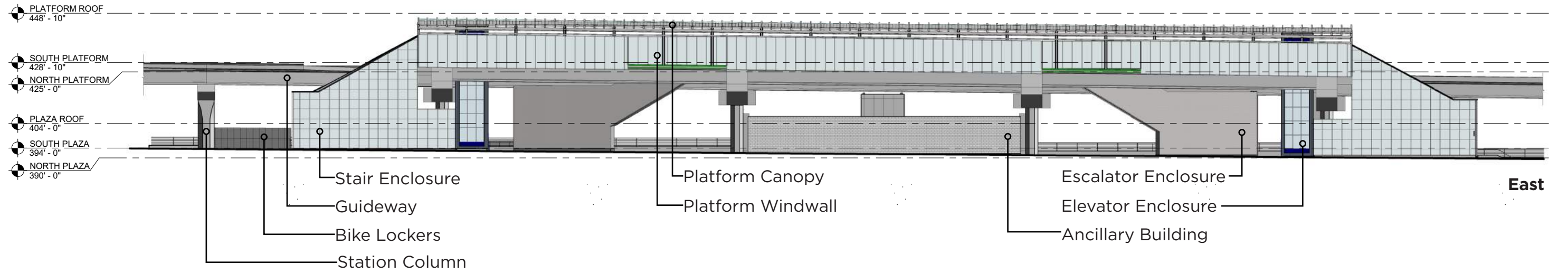
Site Access



Platform Plan



Elevations



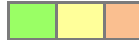
Sustainability

Targeting LEED
Transit Silver at
minimum



LEED v4 for BD+C: Transit Project Checklist

Y ? N



Credit Integrative Process

1

0 0 0 Location and Transportation 18

Y		Credit	Sensitive Land Protection	1
Y		Credit	High Priority Site	2
Y		Credit	Surrounding Density and Diverse Uses	6
Y		Credit	Intermodal Connectivity and Placemaking	4
Y		Credit	Bicycle Facilities	1
Y		Credit	Reduced Parking Footprint	1
Y		Credit	Green Vehicles	1
Y		Credit	Disaster Preparedness Planning	1
Y		Credit	Social Equity	1

0 0 0 Sustainable Sites 9

Y		Prereq	Construction Activity Pollution Prevention	Required
Y		Credit	Site Assessment	1
Y		Credit	Site Development - Protect or Restore Habitat	2
Y		Credit	Rainwater Management	2
Y		Credit	Heat Island Reduction	2
Y		Credit	Light Pollution Reduction	1
Y		Credit	Universal Accessibility	1

0 0 0 Water Efficiency 10

Y		Prereq	Outdoor Water Use Reduction	Required
Y		Prereq	Indoor Water Use Reduction	Required
Y		Prereq	Building-Level Water Metering	Required
Y		Credit	Outdoor Water Use Reduction	1
Y		Credit	Indoor Water Use Reduction	6
Y		Credit	Cooling Tower Water Use	2
Y		Credit	Water Metering	1

0 0 0 Energy and Atmosphere 33

Y		Prereq	Fundamental Commissioning and Verification	Required
Y		Prereq	Minimum Energy Performance	Required
Y		Prereq	Energy Metering	Required
Y		Prereq	Fundamental Refrigerant Management	Required
Y		Credit	Enhanced Commissioning	5
Y		Credit	Optimize Energy Performance	19
Y		Credit	Advanced Energy Metering	1
Y		Credit	Demand Response	2
Y		Credit	Renewable Energy Production	3
Y		Credit	Enhanced Refrigerant Management	1
Y		Credit	Green Power and Carbon Offsets	2

0 0 0 Materials and Resources 13

Y		Prereq	Storage and Collection of Recyclables	Required
Y		Prereq	Construction Demolition Waste and Excavation Management Planning	Required
Y		Credit	Station Life-Cycle Impact Reduction	4
Y		Credit	Building Product Disclosure and Optimization - Environmental Product Declarations	2
Y		Credit	Building Product Disclosure and Optimization - Sourcing of Raw Materials	2
Y		Credit	Building Product Disclosure and Optimization - Material Ingredients	2
Y		Credit	Durability in Material Selection, Design & Operation	1
Y		Credit	Construction Demolition and Excavation Waste Management	2

0 0 0 Indoor Environmental Quality 16

Y		Prereq	Minimum Indoor Air Quality Performance	Required
Y		Prereq	Environmental Tobacco Smoke Control	Required
Y		Credit	Enhanced Indoor Air Quality Strategies	3
Y		Credit	Low-Emitting Materials	3
Y		Credit	Construction Indoor Air Quality Management Plan	1
Y		Credit	Indoor Air Quality Assessment	2
Y		Credit	Thermal Comfort	1
Y		Credit	Interior Lighting	1
Y		Credit	Daylight	2
Y		Credit	Quality Views	1
Y		Credit	Acoustic Performance	2

0 0 0 Innovation 6

Y		Credit	Innovation	5
Y		Credit	LEED Accredited Professional	1

0 0 0 Regional Priority 4

Y		Credit	Regional Priority: Specific Credit	1
Y		Credit	Regional Priority: Specific Credit	1
Y		Credit	Regional Priority: Specific Credit	1
Y		Credit	Regional Priority: Specific Credit	1

0 0 0 TOTALS Possible Points: 110

Certified: 40 to 49 points, **Silver:** 50 to 59 points, **Gold:** 60 to 79 points, **Platinum:** 80 to 110

View from 5th Avenue NE



Potential Artwork Location



Art mural at center of station facing 5th Ave NE

View from NE 130th Street Bridge



View from Plaza Lobby



Potential Artwork Location

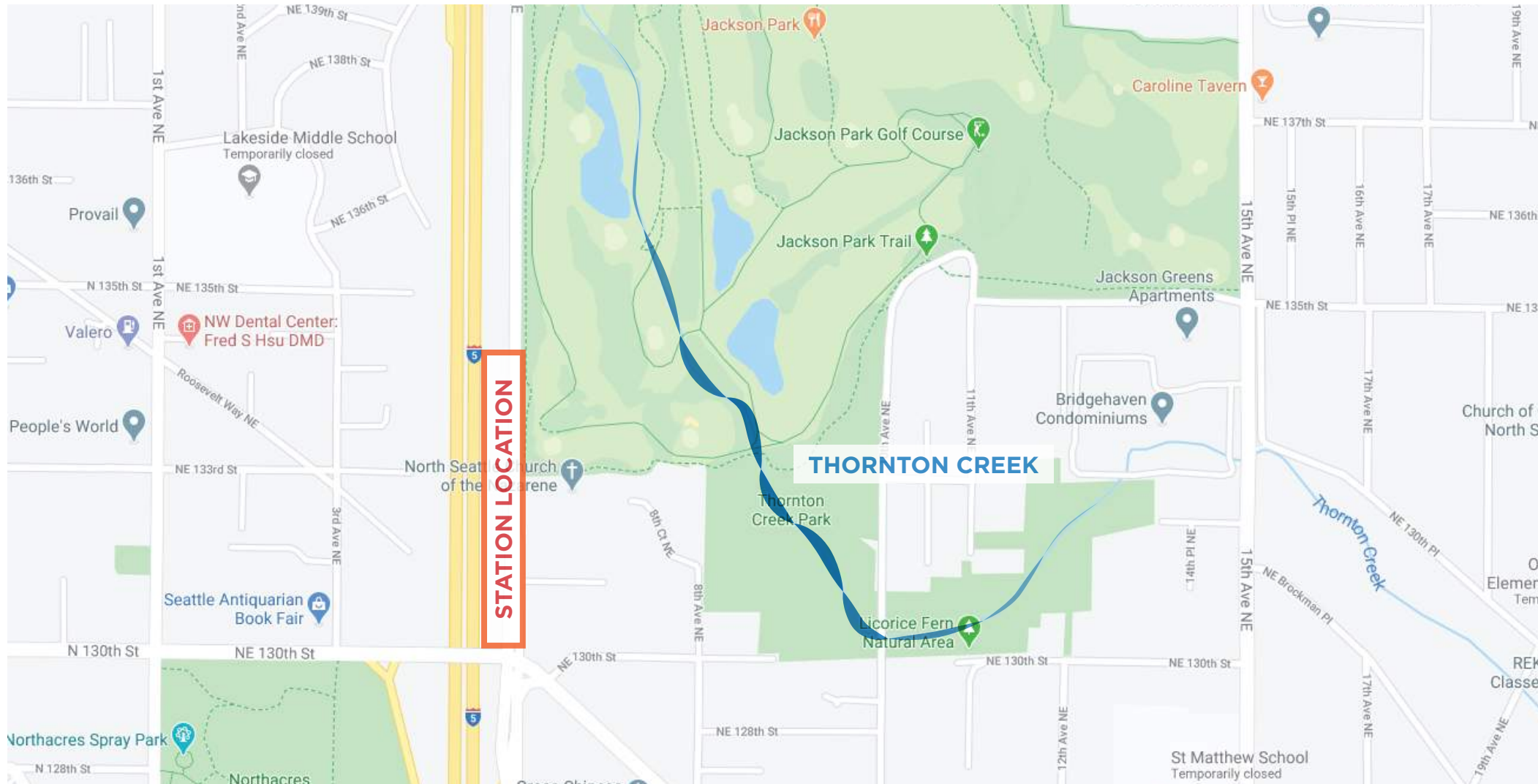


Suspended artwork located at both south & north lobbies (Potentially internally lit)

View From Southbound Platform



Inspired by Nature



Form inspiration

- Thornton Creek stream meandering
- Intersecting arc geometry

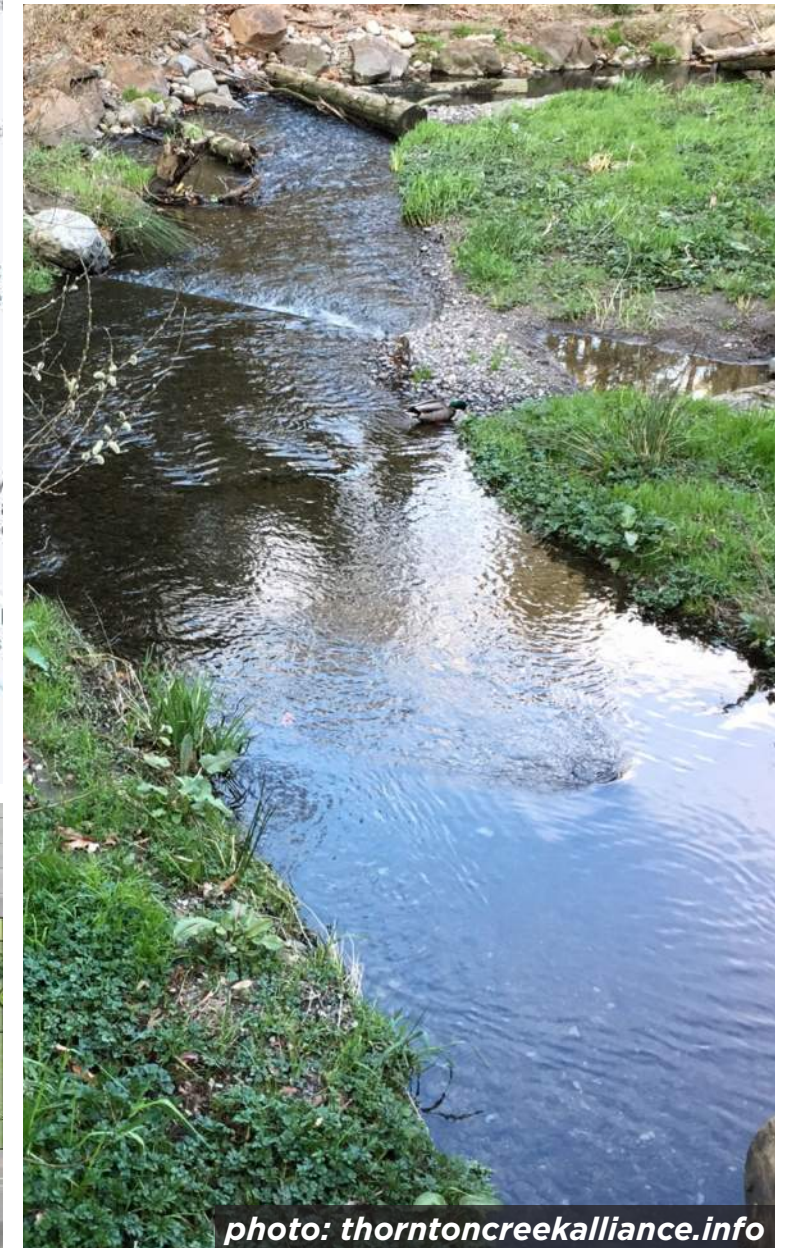
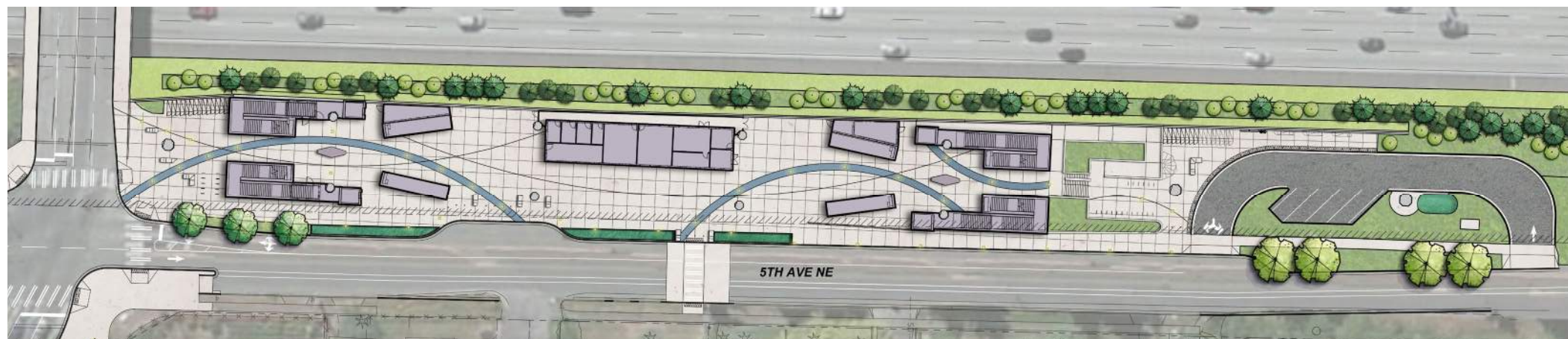
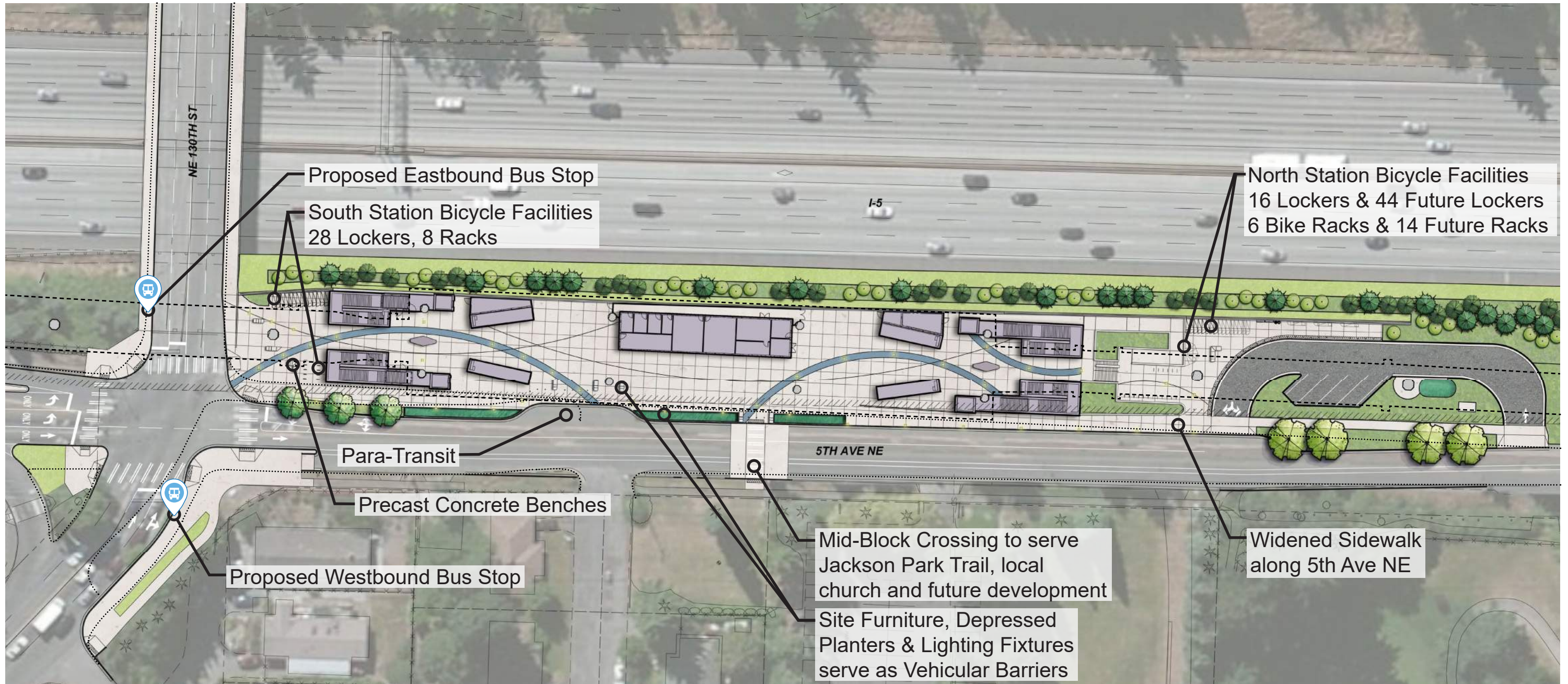


photo: thorntoncreekalliance.info



Site Improvements



----- Guideway Overhead

----- Existing Curb



Site Palette

SEATING & SITE FURNITURE



PAVING & STEPS



LIGHTING

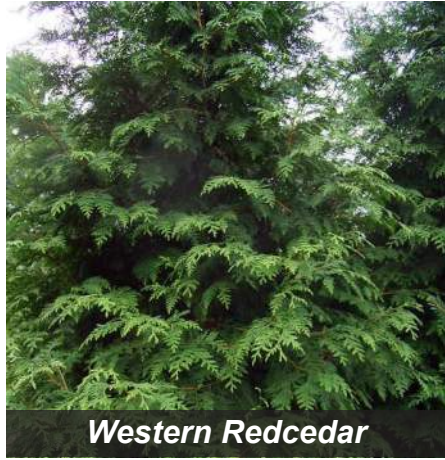


BICYCLE LOCKERS



Plant Palette

TREES



Western Redcedar



Vanderwolf Pine



Metro Gold Hedge Maple



Pacific Sunset Maple



Bowhall Maple

STREETSCAPE



Sword Fern



Privet Honeysuckle



Epimedium

STATION PLAZA



Low Oregon Grape



Sword Fern



Snowberry



Salal



Inside-Out Flower

MIX B



Baldhip Rose



Red Twig Dogwood



Thimbleberry



Snowberry



Low Oregon Grape

5TH AVE



Soft Rush



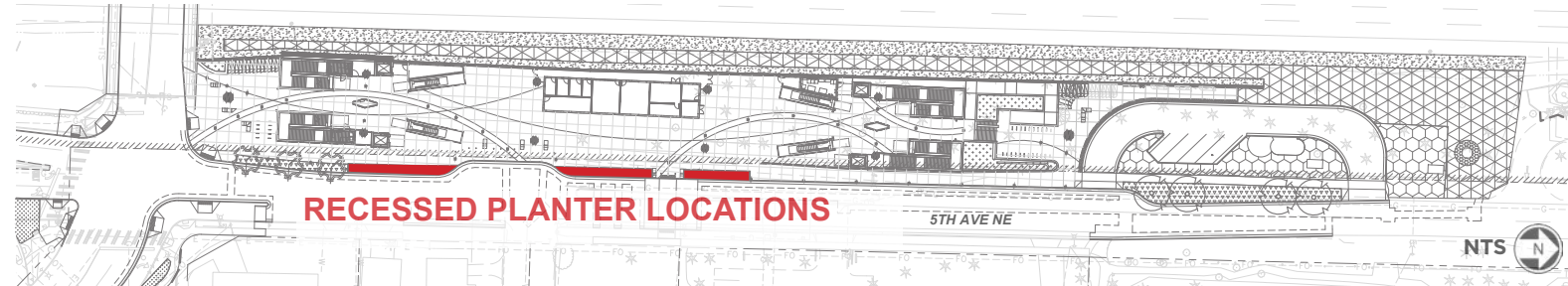
White Spirea



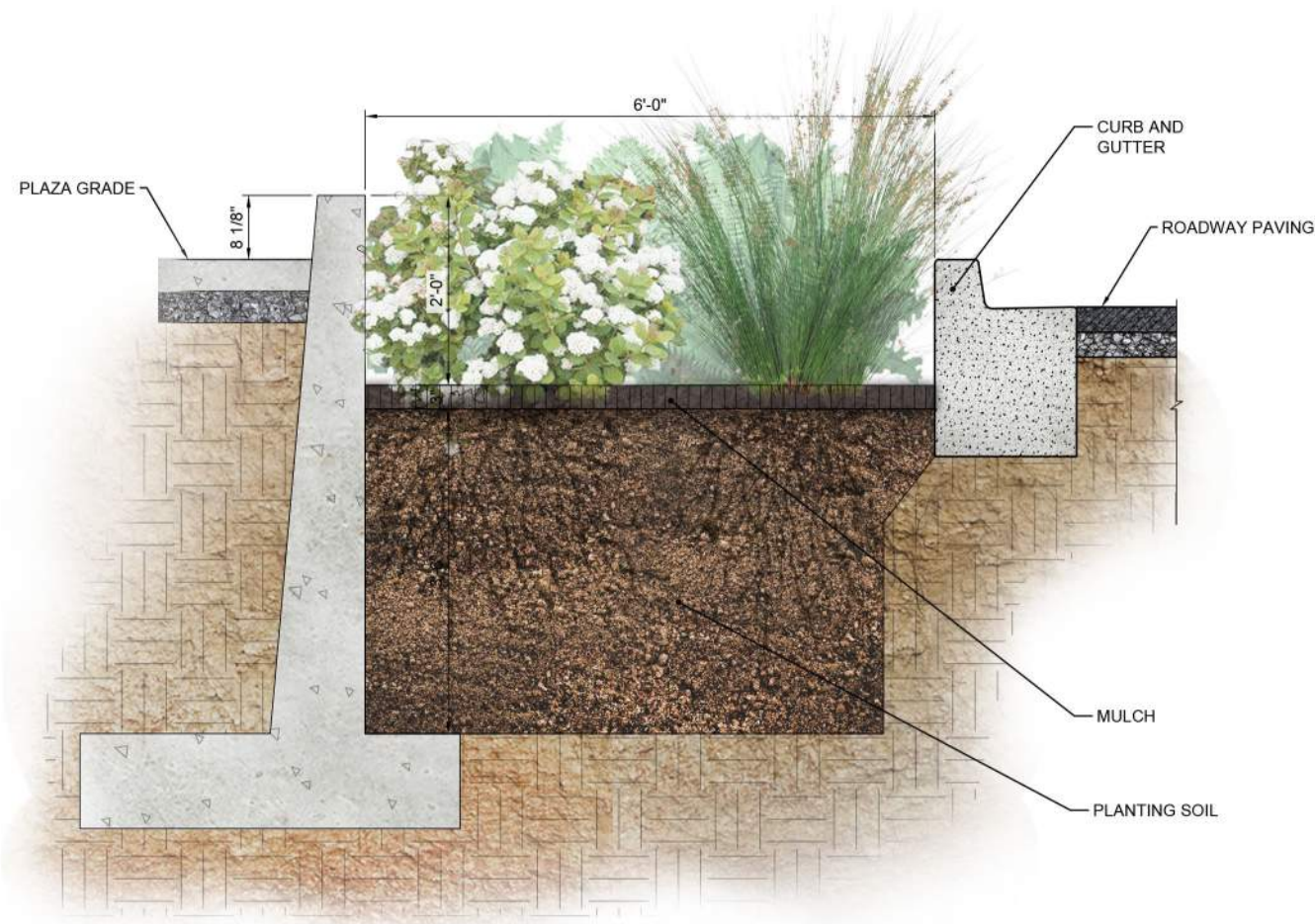
Sword Fern

Site Drainage

KEY PLAN



RECESSED PLANTER SECTION



CHARACTER IMAGES



Multi-functional planters

- Vehicular barrier
- Bioretention planting

Questions & Comments

Thank you.



 [soundtransit.org](https://www.soundtransit.org)

