

North Precinct Facility Update

September 2018



Space issues at the North Precinct

- The Seattle Police Department North Precinct was built in 1984, and was designed for a staff 154. The precinct currently houses 250 employees, nearly 100 more than planned for.
- Over the next several years, Seattle Police Department (SPD) expects to add around 50 additional officers to the North Precinct.

An interim solution for the Precinct

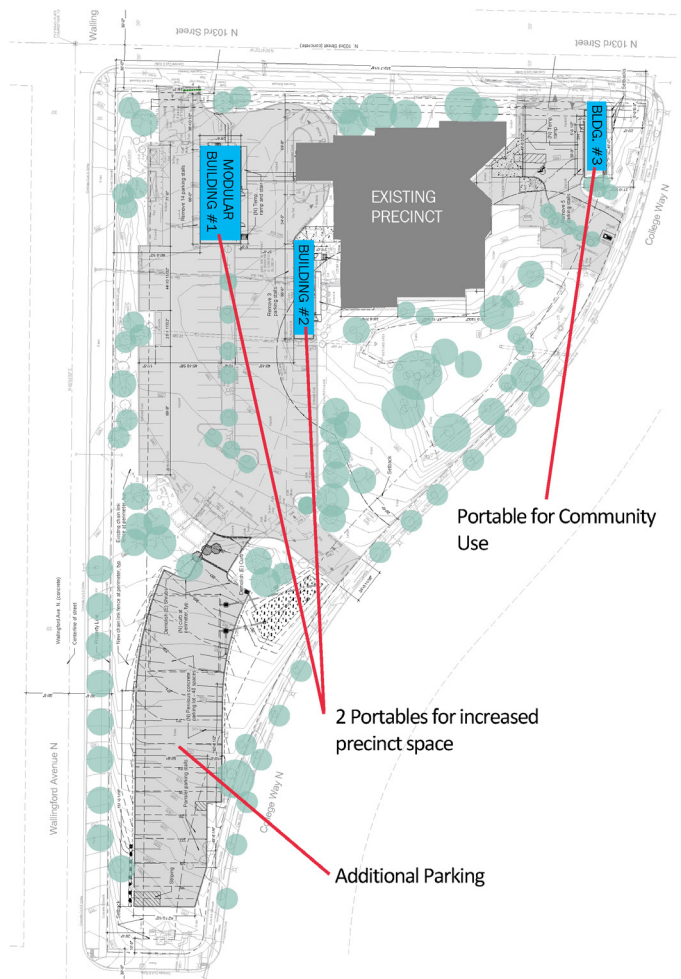
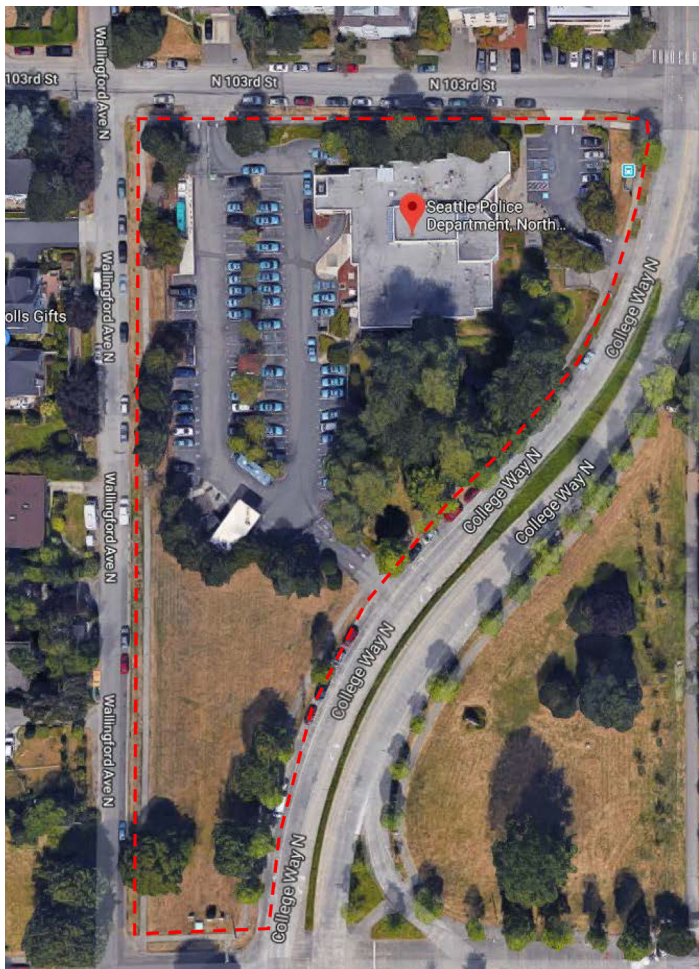
- This improvement project was developed by the Seattle Department of Finance and Administrative Services (FAS) and the Seattle Police Department. This project will allow SPD to remain in the current precinct for up to seven more years until a new facility can be built.
- Plans for a replacement facility for the North Precinct were put on hold in 2016.

Updates and Questions

Updates will be made available to the community as the project progresses.

For questions about this project and upgrades to the existing North Precinct facility, please contact Andy Ishizaki, FAS Senior Project Manager at andy.ishizaki@seattle.gov

North Precinct Facility Update



What will be updated and improved

- This solution works with the existing surrounding space of the facility to expand capacity.
- One portable trailer will be installed in the front parking lot to serve as a community room and meeting space – which the existing precinct does not have.
- The building will be modified inside while keeping the current footprint. Two portable trailers will be installed in the west parking lot behind the building. These improvements will increase space for detectives, evidence processing, roll call, report writing and bike storage and repair.
- The portable trailers will displace existing parking space, so the adjacent lawn on the property will be resurfaced with asphalt and have fencing installed for fleet vehicle parking.

Timeline, Budget and Impacts

- In November 2017, City Council set aside \$11.1 million to update the existing North Precinct facility.
- The Seattle Department of Construction and Inspections (SDCI) land use permit review process is underway. Visit www.seattle.gov/dpd/documentlibrary and enter project number 3031508-LU for more information.
- Any major site construction, including trailer installation, may begin in fall 2019, depending on when SDCI issues permits.
- Construction is estimated to take approximately six months from the construction start date.