

**Population Health Facility
City/University Community Advisory Committee
Project Update
December 5, 2017**



Agenda

- Overview
Vision, Goals, Scope, Schedule,
Budget
- Site Design
Circulation, Program, Trees
- Building design
Massing, Entrances

Vision

The facility will serve as a powerful catalyst for the University's new Population Health Vision and be an idea laboratory and collaboration incubator for students, faculty, staff, and visitors from a wide range of disciplines in the region, nation and world to address global health concerns.

It will house the Institute for Health Metrics and Evaluation (IHME), the Department of Global Health (DGH), and selected portions of the School of Public Health (SPH) and encourage stronger links with schools, colleges, and academic units across campus.

Goals

1. Foster collaboration and connectivity amongst those working within the facility, with other programs and with researchers at the UW, local and global partners, and students;
2. Promote healthy living within and around the new facility;
3. Design space that is flexible and adaptable to meet the evolving needs of IHME, DGH, and selected portions of SPH;
4. Employ best practices in sustainable building to reduce energy and water use, lower life cycle costs, and improve occupant satisfaction and health; and
5. Support and further the institution-wide Population Health Vision.

Scope

Estimated building size: 300,000 GSF

Anticipated Program

- Offices: single & multiple occupancy, open work stations
- Collaborative group work areas
- Conference / meeting spaces
- Instructional space
- Computing laboratories
- Possible street facing community-oriented destinations that help activate the neighborhood
- Outdoor spaces associated with program and campus needs

*Research wet laboratories are not part of the scope.

Schedule & Budget

Schedule

- EIS September 2016 – April 2017
- Site Selection September 2016 – May 2017
- Team Development February 2017 – April 2017
- Design May 2017 – June 2018
- Guthrie Annex Demolition February 2018 to March 2018
- Construction April 2018 – March 2020
- Closeout March 2020 – October 2020

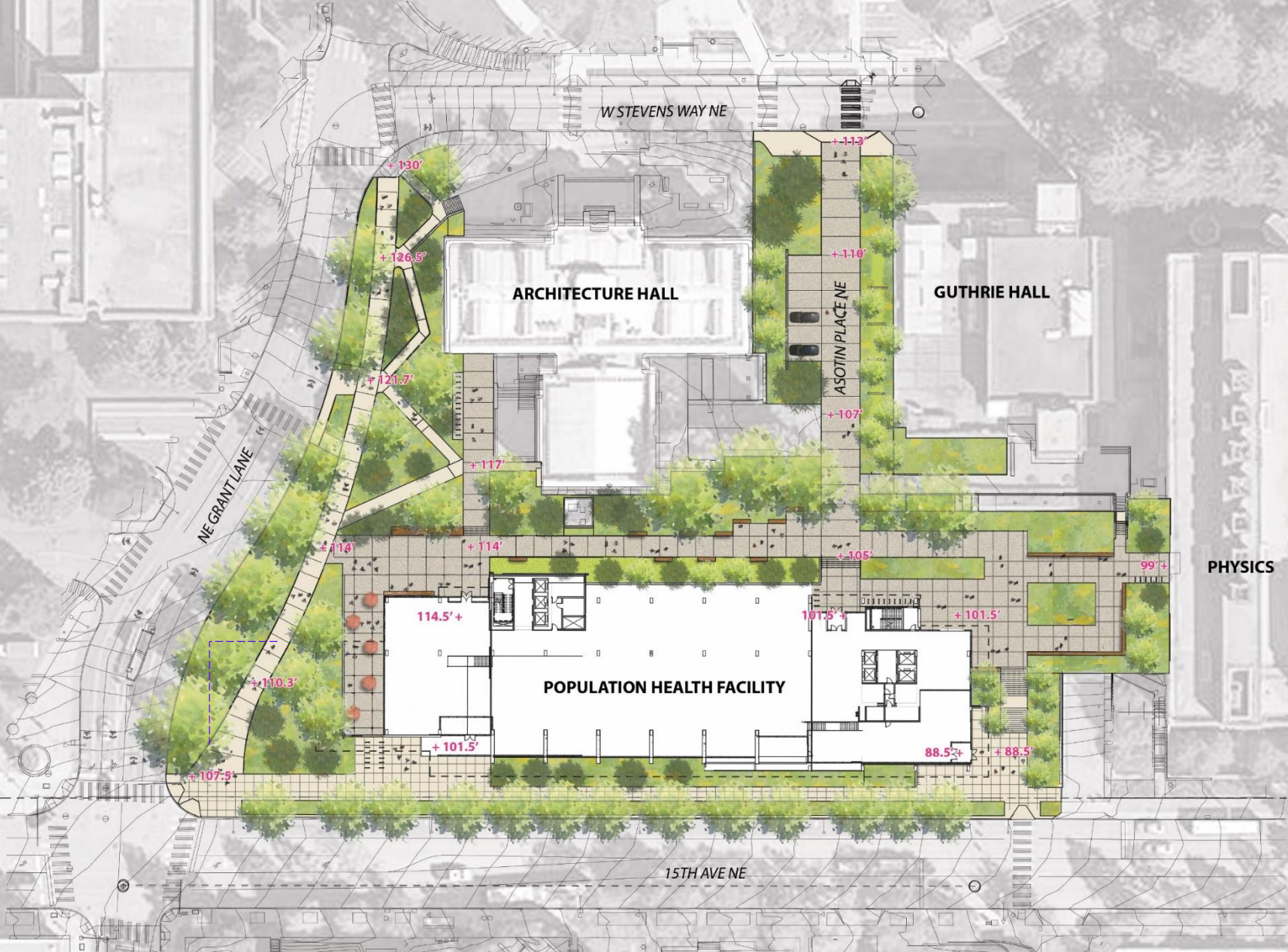
Project Budget

\$230 million

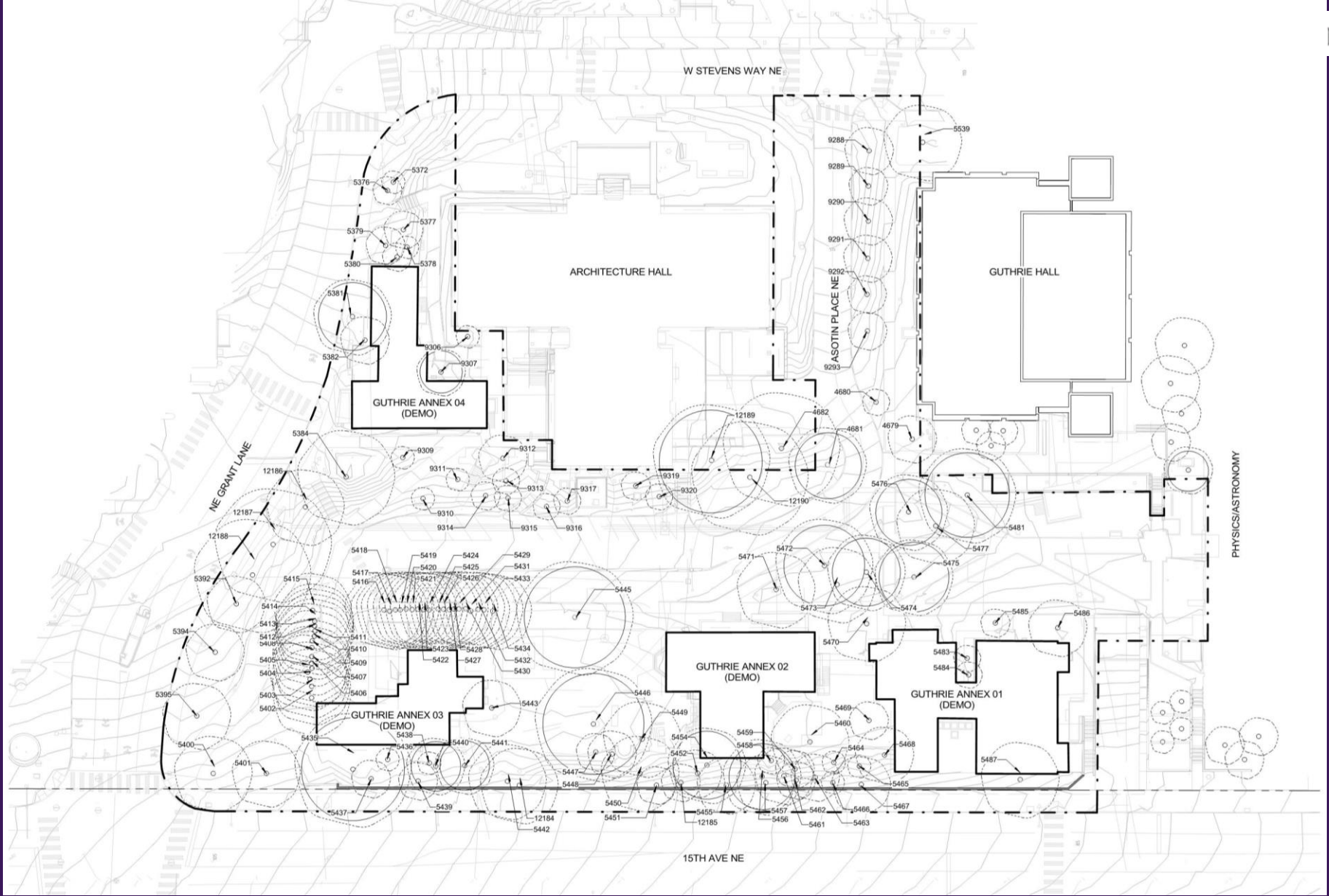


Site Design

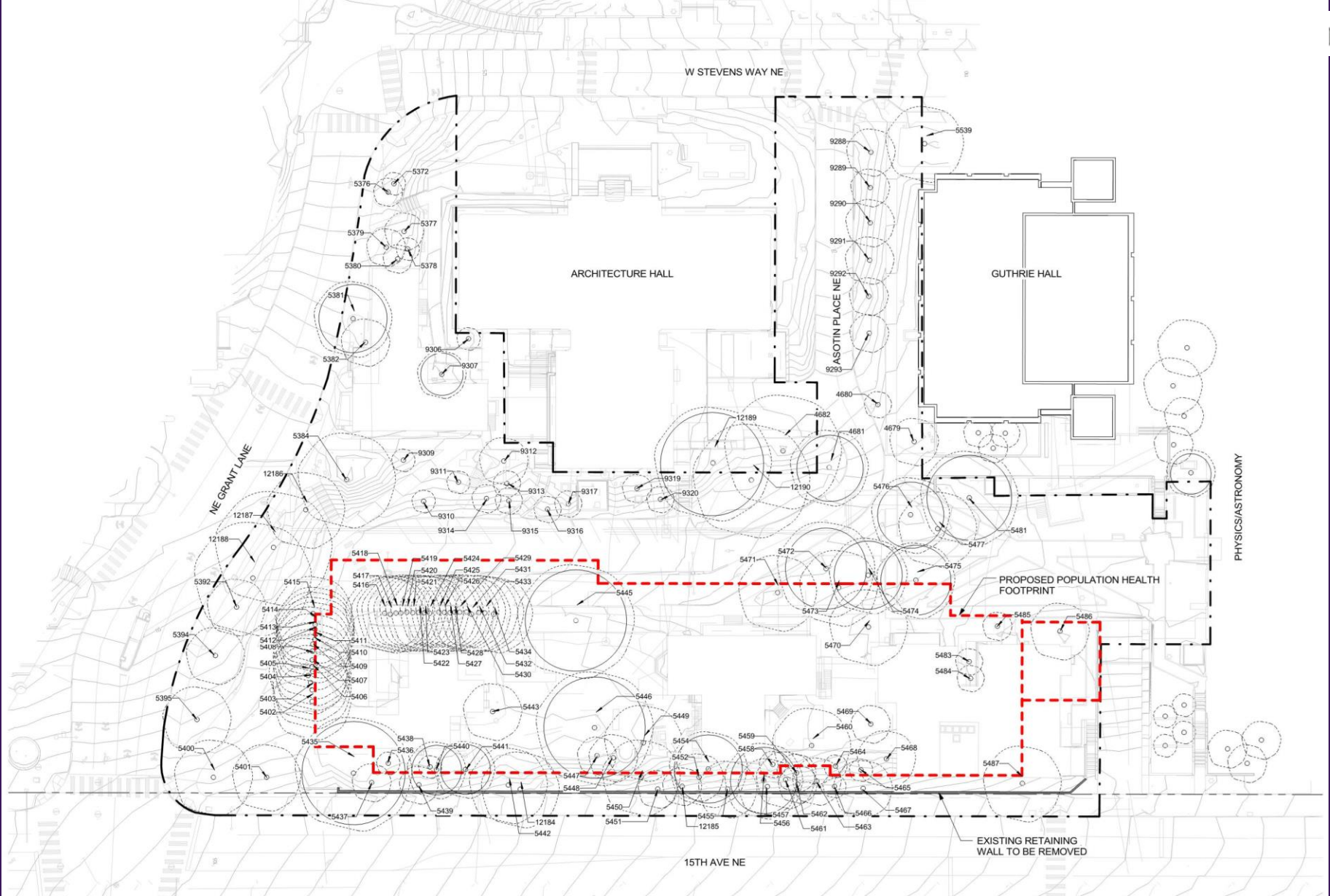
- Building
- Circulation
- Trees



Site Plan



Site Survey



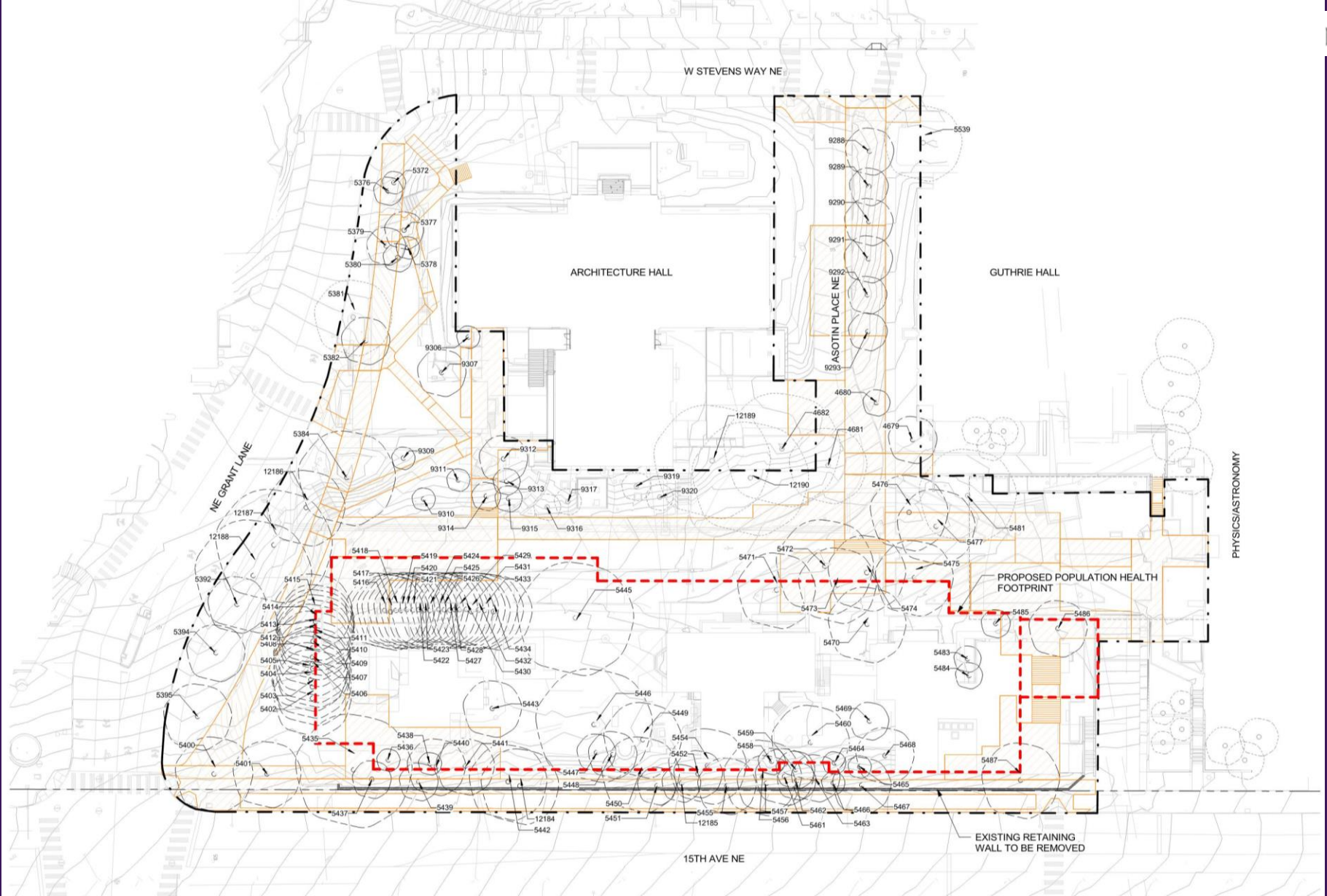
Building Footprint

79 Trees (10 Exceptional) removed for building construction



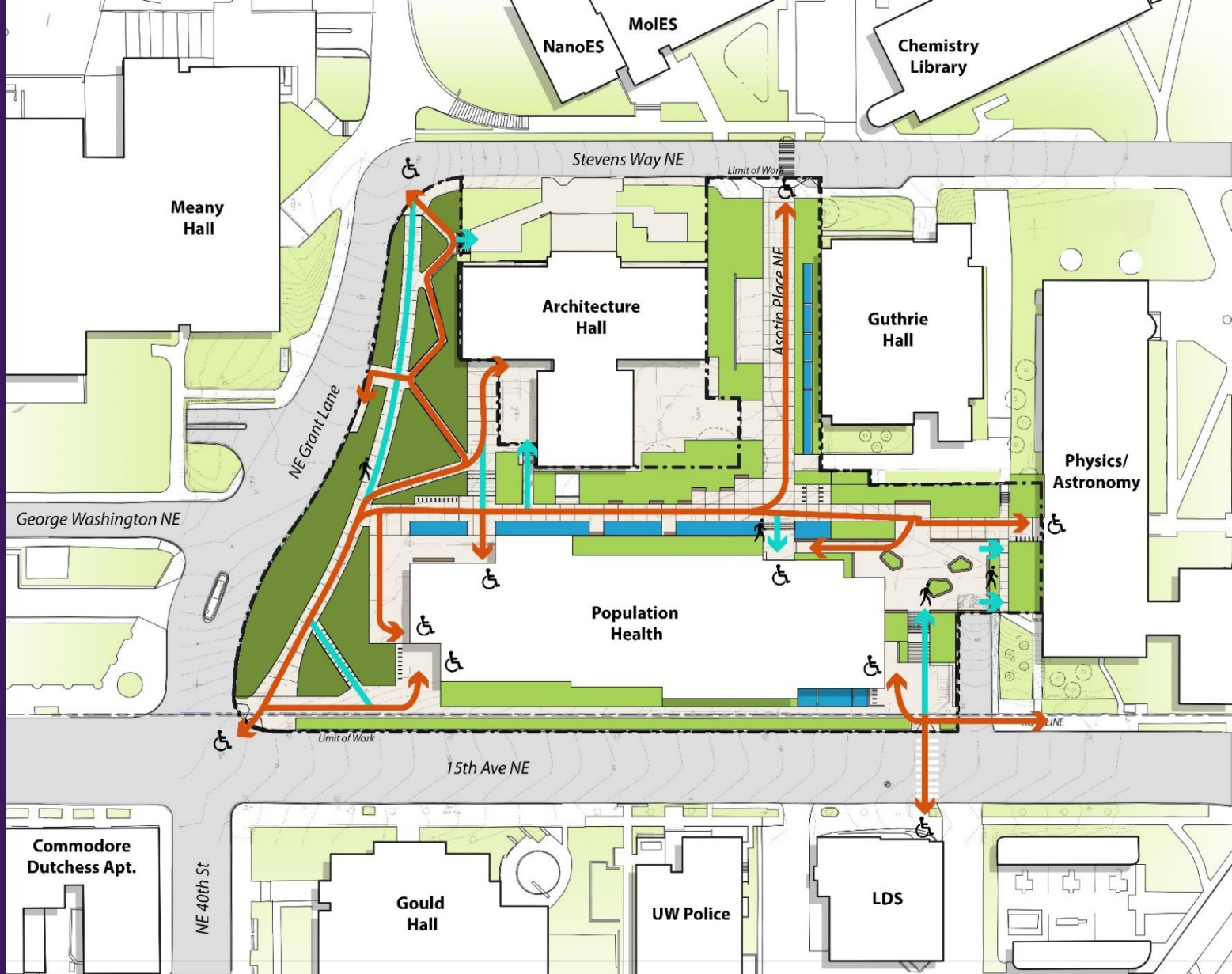
Building Footprint

79 Trees (10 Exceptional) removed for building construction

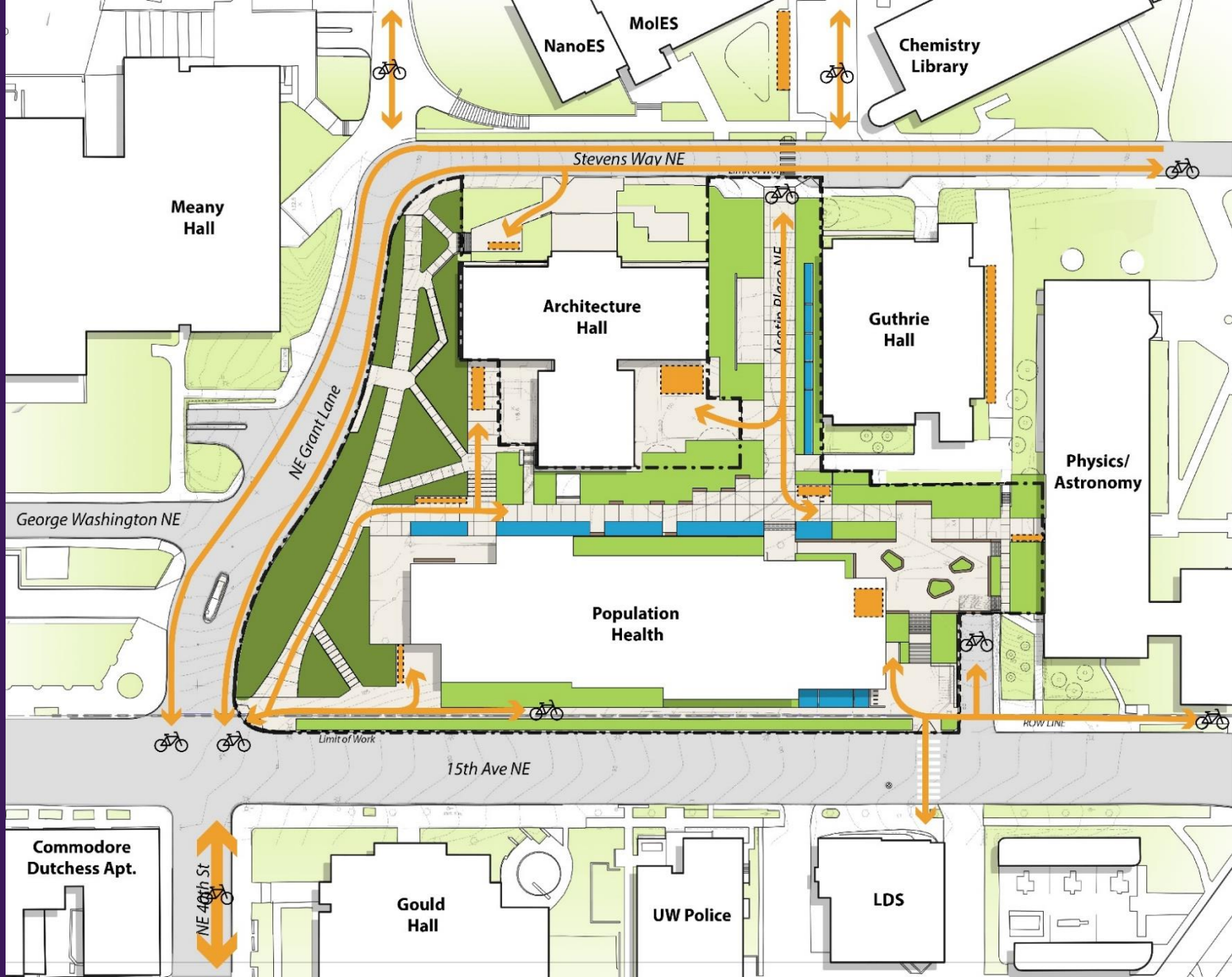


ADA, Pedestrian & Bicycle Circulation

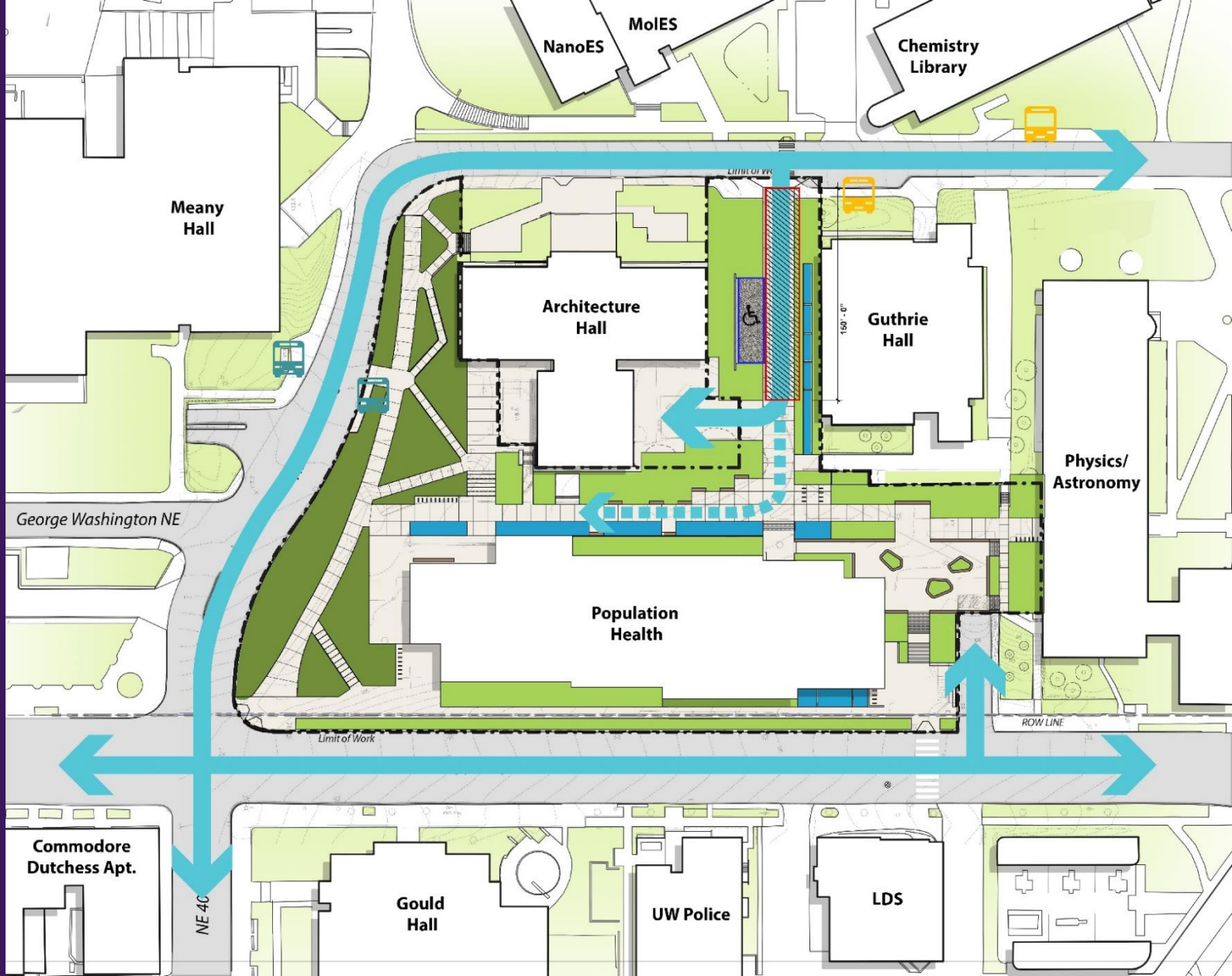
35 Trees (2 Exceptional) removed for grading related to circulation improvements



ADA & Pedestrian Circulation



Bicycle Circulation

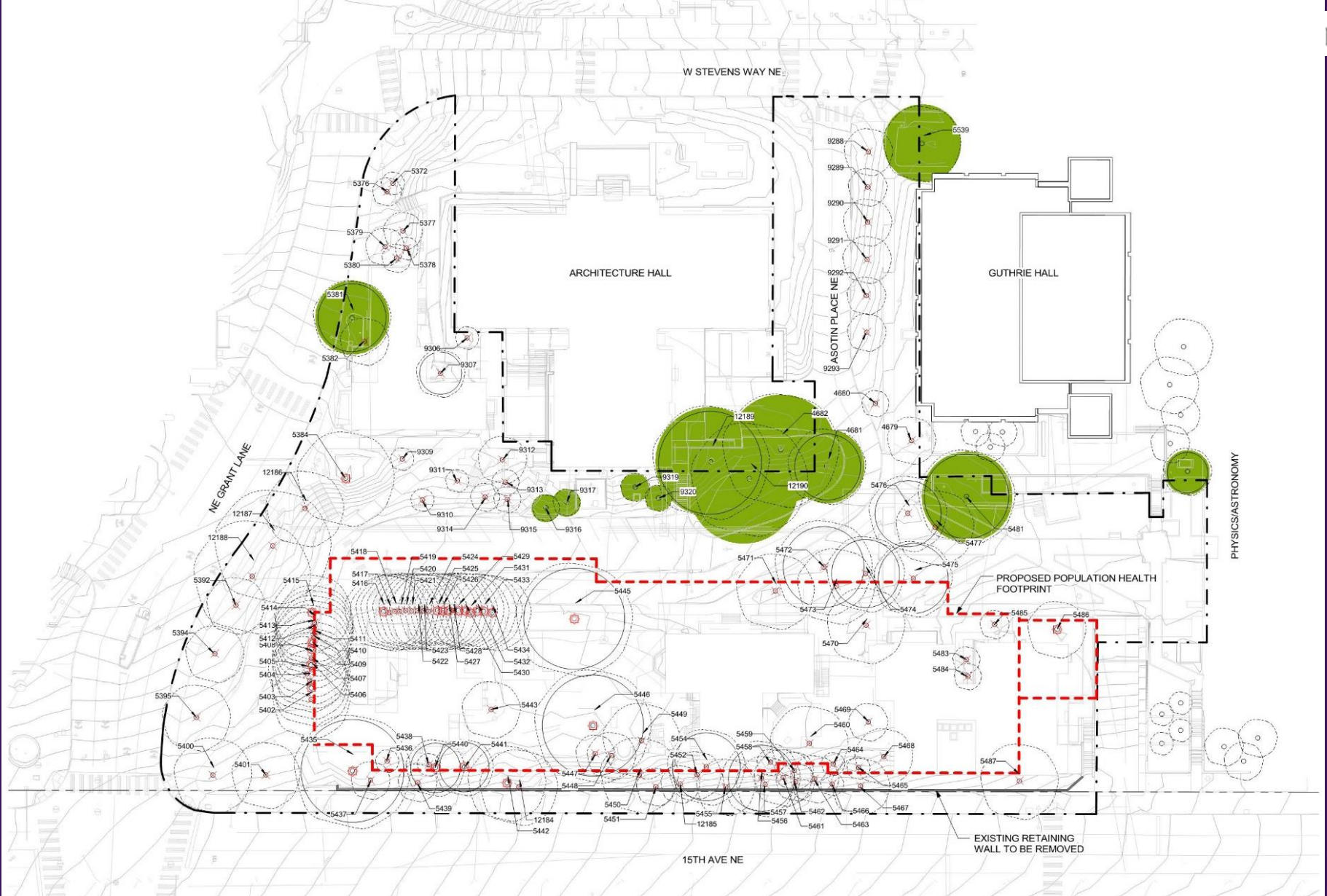


Vehicular Circulation



ADA, Pedestrian & Bicycle Circulation

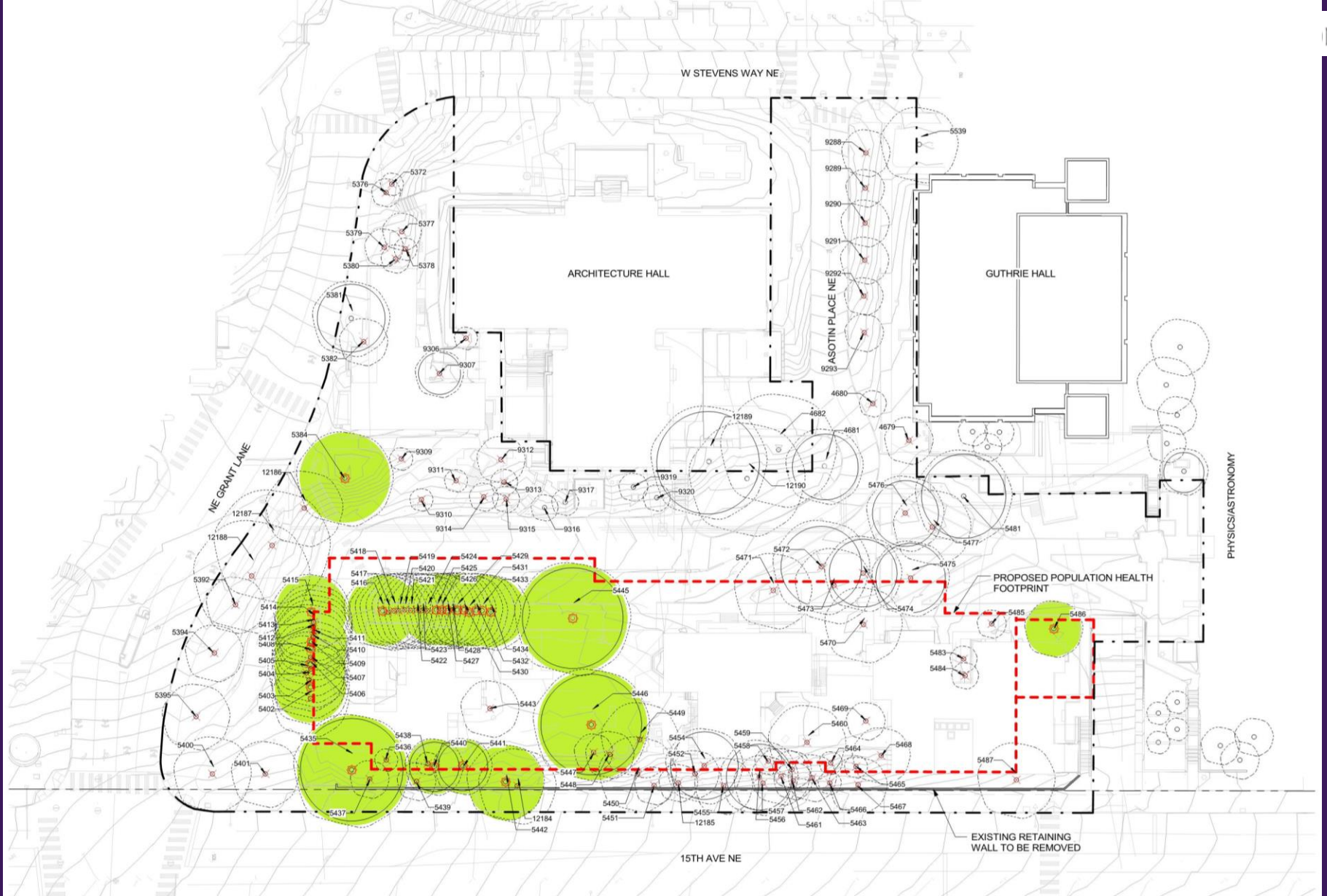
35 Trees (2 Exceptional) removed for grading related to circulation improvements



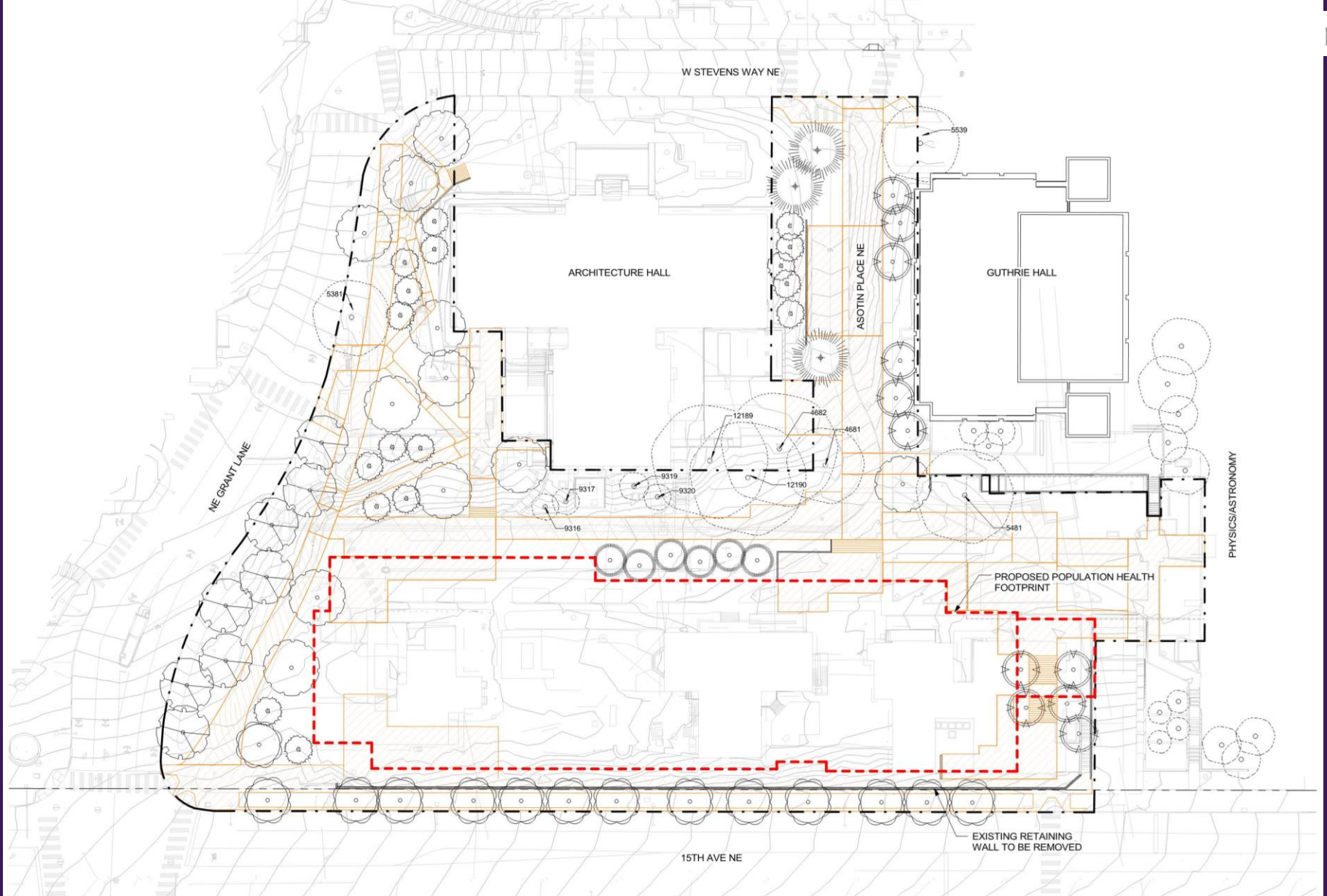
Tree Preservation
12 Trees (5 Exceptional) identified for preservation



Tree Preservation
12 Trees (5 Exceptional) identified for preservation



Tree Salvage
26 Trees (7 Exceptional) identified for salvage



Proposed Trees

70 Trees planted within Project Boundary, 38 Trees planted around Campus

Building design

- Massing
- Entrances



UNIVERSITY *of* WASHINGTON





NW Entrance – 15th Ave NE

UNIVERSITY *of* WASHINGTON





NW Entry



Multi-height space level 1 and 2



NE Entry – View from NE Grant Lane



NE Entry – View from Architecture Hall



SE Entry – Asotin Lane

Questions