

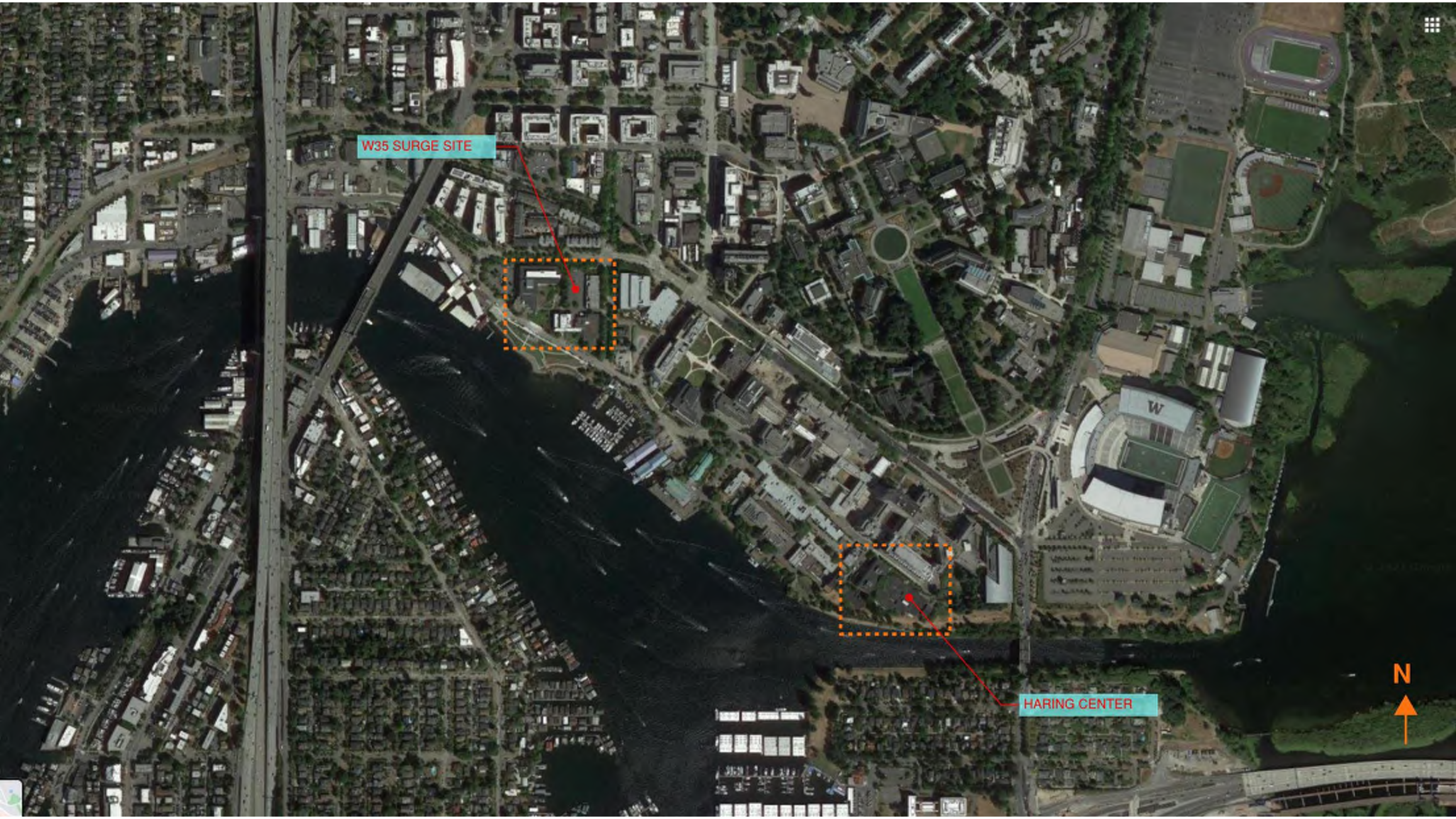
# Haring Center/W35 Surge Space

**UW CUCAC Presentation**  
February 2022

# Haring Center Renovation—

## PROJECT GOALS

- To **improve the quality of the learning spaces** for children currently being served and to support the **collaboration** between the research and professional development groups.
- To accommodate anticipated **growth of research and professional development** programs.
- To mitigate **health and safety** issues and **remove access and usability barriers** in and around the facility.
- To **complete building renewal** and maximize the extension of the building's anticipated useful life.



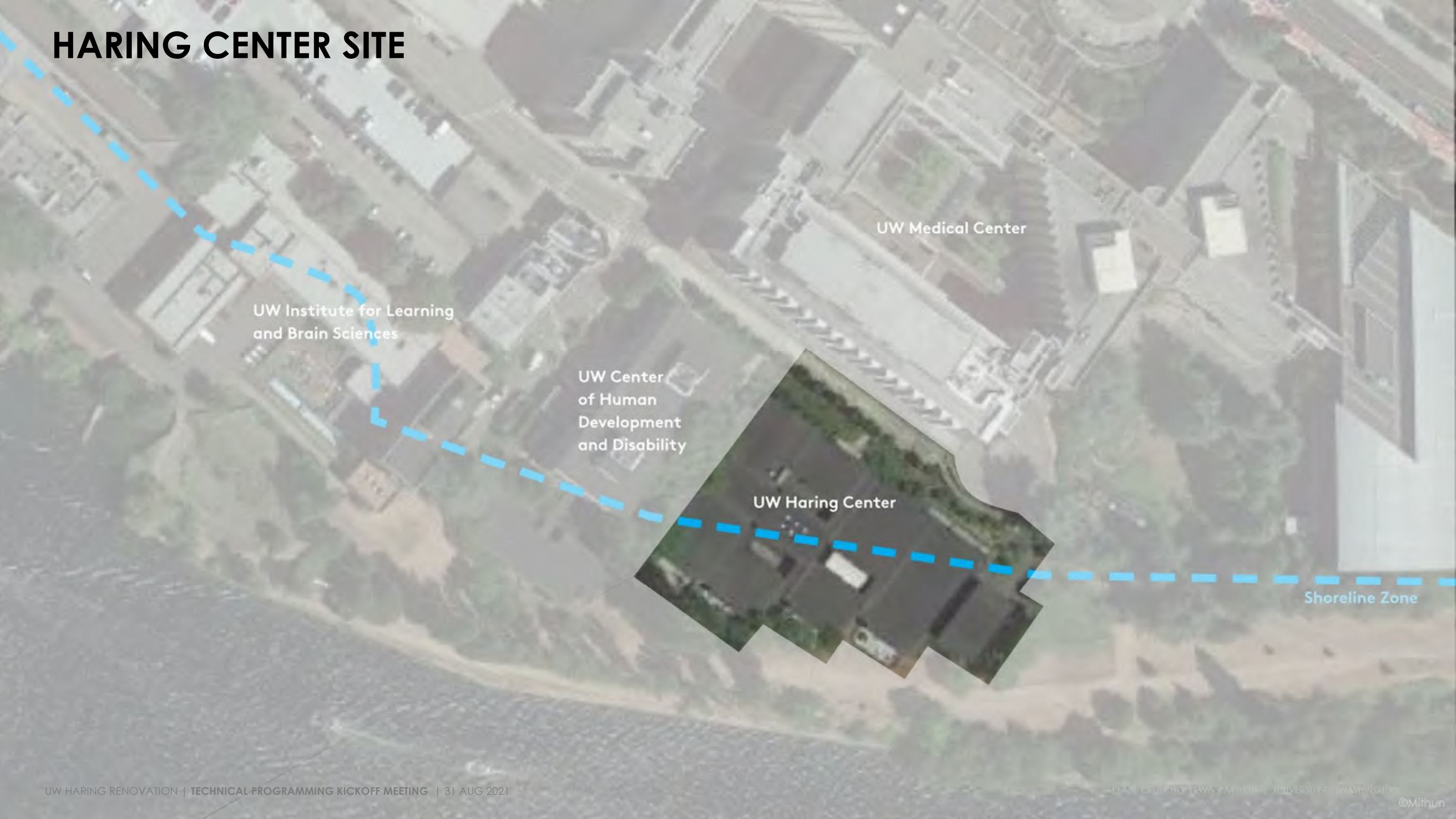
W35 SURGE SITE



HARING CENTER



# HARING CENTER SITE



UW Medical Center

UW Institute for Learning  
and Brain Sciences

UW Center  
of Human  
Development  
and Disability

UW Haring Center

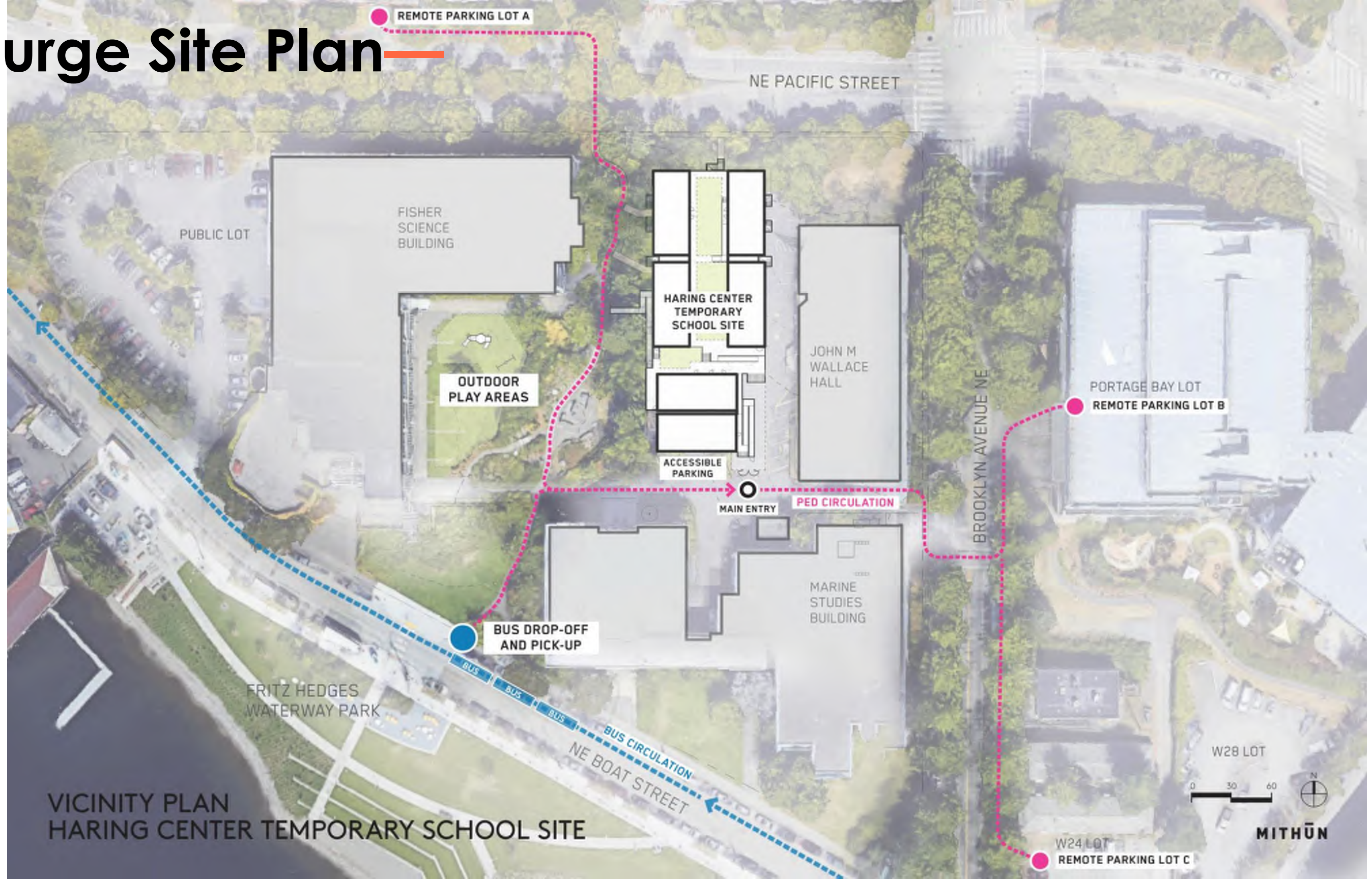
Shoreline Zone



Surge Site



# Surge Site Plan



VICINITY PLAN  
HARING CENTER TEMPORARY SCHOOL SITE

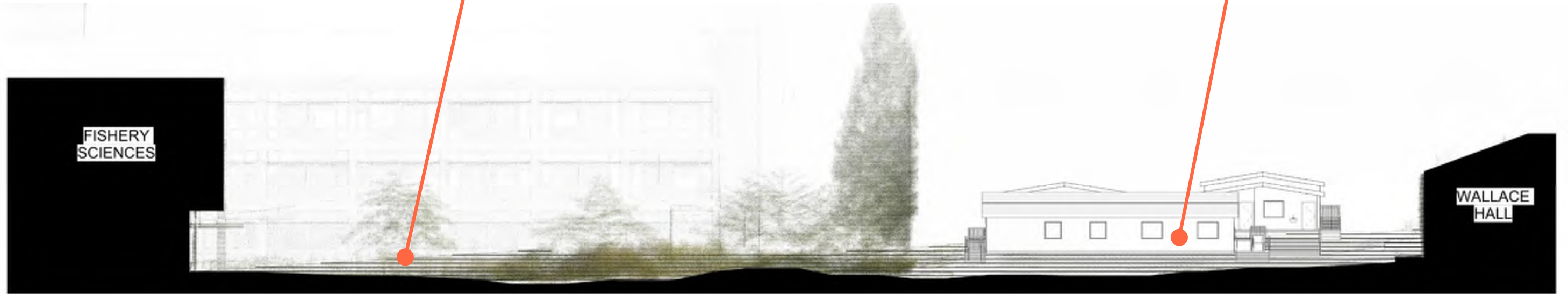
# Surge Site Axonometric View



# Surge Site E-W Section

FISHERY  
SCIENCES  
COURTYARD

W35 LOT/  
SURGE SITE





# Surge Site N-S Section—

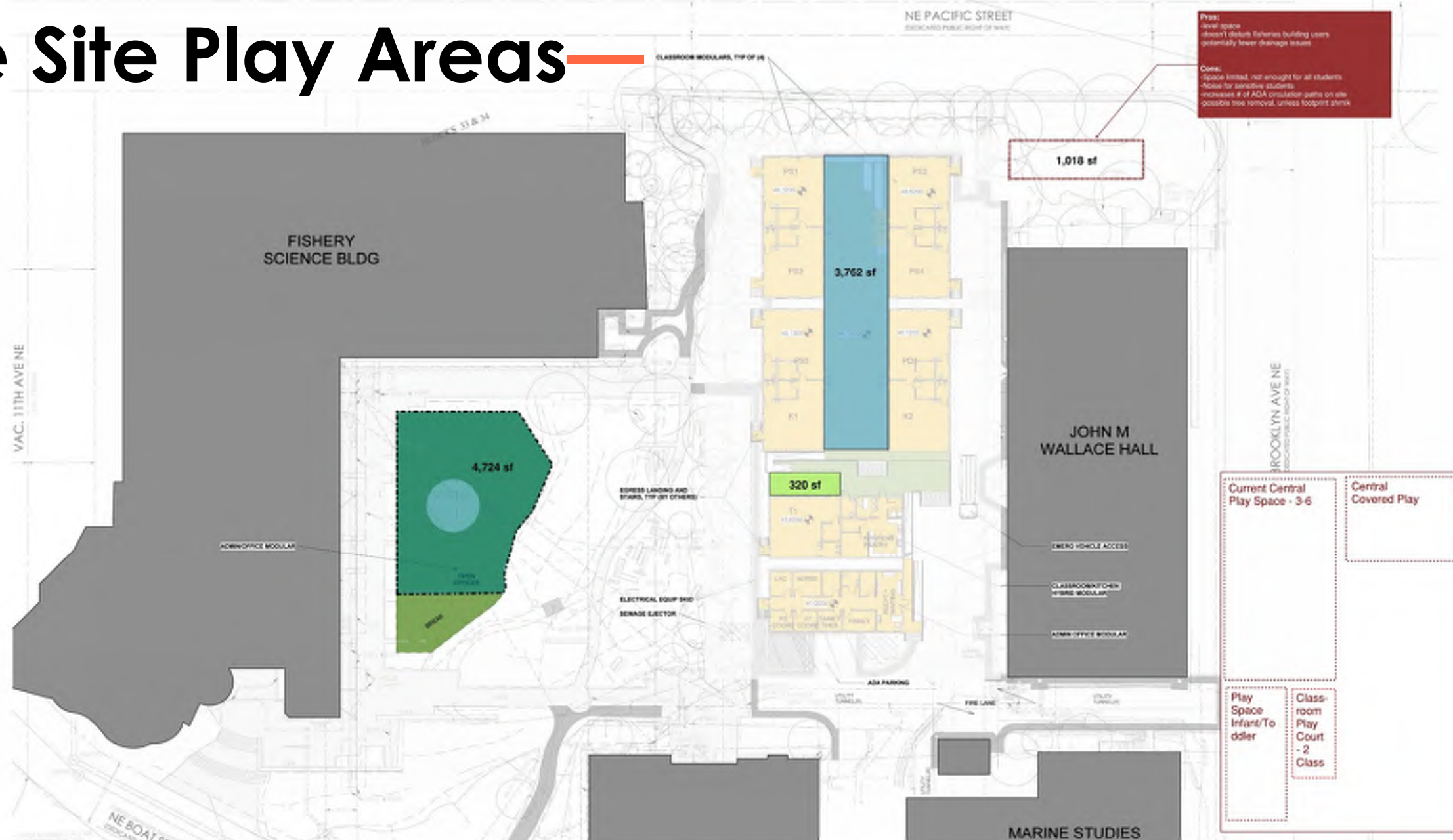
MARINE STUDIES BLDG

W35 LOT/SURGE SITE

PACIFIC ST.



# Surge Site Play Areas



- Classroom "Play-Courts"
- Central Play Space - Ages 3-6
- Play Space - Infant Toddler

	Haring Center (SF)	Surge Site (SF)	Notes
Classroom "Play-courts"	3,118 (780 SF shared per 2 classrooms)	2,288 <i>*after circulation is subtracted</i>	These courts/patios are used for formal classroom activities as well as free "play" activities to make up for shortage of play area in central court per Seattle code. Similar function is assumed for Surge Site portables deck.
Central Play Space Ages 3-6	4,255	Fisheries Courtyard= 4,366/ 3,765 NE Corner= 1,000	NE corner play area space sized to avoid trees, 1,600 SF if trees removed.
<b>Sub Total for Ages 3-6</b>	<b>7,373</b>	<b>6,654/6053</b>	
Play Space - Infant Toddler	1,453/2 classrooms	330/1 classroom	Currently assuming main play space on the portables deck. On grade is an option in courtyard space.
<b>Total</b>	<b>8,826</b>	<b>6984/6,383</b>	

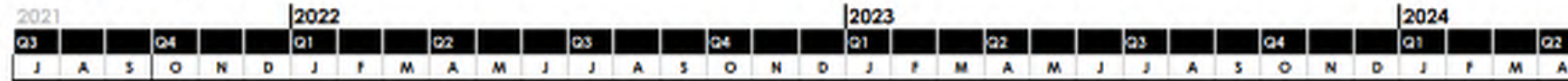


# Draft Schedule

HARING CENTER RENOVATION  
University of Washington

PROJECT SCHEDULE

MITHUN / LEWIS  
8/19/2021



## DESIGN PHASE | 12 m

D8 team development

### PROJECT DEFINITION | 3 m

User workshops

Key decisions

### DESIGN / PRECONSTRUCTION | 9 m

30% design

60% design

Cost model updates

Prepare & Finalize GMP

Construction documents

### PERMITS | 10-12 m

Shoreline / SEPA / MUP Permits | 10 m

Building / Structural permits | 9 m

MEPF Permits | 8 m

### CONSTRUCTION | 14 m

Soft demo / hazmat abatement

Construction

Sitework

Closeout / move in

Project Complete

### W35 SURGE SPACE

Validation / concept design / interior design

Temp use permits / MUP

Vendor order / lead time

On-site install

Move-in / setup

Surge Space Occupancy

Move out



# NEXT STEPS

- Confirm site design with UW process partners
- Complete permitting process
- Prepare site for construction

