

**Key**

RESIDENCE HALLS/APARTMENTS		ACCESSIBLE PARKING	
ACADEMIC/ADMINISTRATIVE		ACCESSIBLE ENTRANCE	
AMES LIBRARY			
RECREATION/DINING			

## BUILDINGS

NAME	LOCATION
<b>J</b> Alexander Hall	D4
<b>D</b> Ames Library	B3
<b>W</b> Arnett Hall	(81) A2
<b>N</b> Art Center	F3
<b>F</b> Ashton Hall	B5
Bailey Apartments	(56) D5
Bank	D2
Beegle Hall	(5) D4
Bertona Classrooms	(65) E3
Bookstore	D2
Center for Biblical and Theological Education/ Graduate Theology, 303 W. Dravus	(75) D5
Crawford Music Building	D4
Cremona Classrooms	(77) E3
Davis Apartments	(32) D6
<b>A</b> Demaray Hall (DH)	B2
<b>T</b> Eaton Hall	C3
<b>V</b> Emerson Hall	B2
Emerson Triplex	(79) A2
Facility Operations Center	(26) F4
Falcon Apartments	(34) B2
Falcon Duplex	(35) B2
Falcon Fourplex	(63) B1
Fine Center	(76) E4
<b>M</b> First Free Methodist Church	E4
<b>B</b> Gwinn Commons	B3
Hillford House (Private)	(12) A4
<b>E</b> Hill Hall	A3
Kingswood House, Graduate Theology	D5
<b>G</b> Marston Hall	C3
<b>U</b> McKenna Hall	C2
<b>K</b> McKinley Hall	D4
<b>I</b> Moyer Hall	C3
<b>Q</b> Nickerson Studios	C1
<b>P</b> Otto Miller Hall (OMH)	D1
<b>H</b> Peterson Hall	C3
<b>O</b> Royal Brougham Pavilion (RBP)	E2
School of Business, Government, and Economics Center House	(67) C2

NAME	LOCATION
<b>S</b> Student Union Building (SUB)	D3
Subway	(80) E3
The Wesley at Cremona	(72) F4
The Wesley at Dravus	(73) F4
University Services (US)	(29) B4
Walls Advancement Center (WAC)	(23) F3
<b>G</b> Watson Hall	C3
<b>C</b> Weter Memorial Hall	B3
34 W. Cremona Apartments	(31) F3
35 W. Cremona Apartments	(58) F3
37 W. Dravus Apartments	(59) E4
415 W. Dravus Duplex	(84) C5
528 W. Dravus Apartments	(69) B4
605 W. Emerson Apartments	(62) A2
608 W. Emerson Apartments	(66) A2
650 W. Bertona Apartments	(70) A2

## PARKING LOTS

NAME	LOCATION
<b>W</b> Arnett Garage	A3
<b>F</b> Ashton	(42) A5
Crawford	(43) D4
Davis	(44) D6
Dravus	(45) C4
<b>V</b> Emerson Garage	B2
Falcon Apartments	(46) B2
<b>E</b> Hill	(47) A3
McKenna	(48) C2
Otto Miller Hall	(49) D1
Otto Miller Hall South	(41) D2
Otto Miller Hall West	(87) D1
Ross	(51) E3
Sixth Avenue West	(52) B2
Visitor	(53, 45) C2, C4

## SELECT OFFICES/SERVICES

NAME	LOCATION
Admissions (Graduate), 4 W. Nickerson	(85) Callout
<b>A</b> Admissions (Undergraduate), DH 120	B2
Alumni and Parent Relations	(23) F3
Annual Giving	(23) F3
<b>N</b> Art Center Gallery	F3
<b>S</b> Associated Students of Seattle Pacific (ASSP), Main Level SUB	D3
<b>O</b> Athletic Offices, RBP	E2
<b>A</b> Business and Finance, DH 220	B2
Campus Card Services, US	(29) B4
Center for Career and Calling, Second Floor SUB	D3
<b>I</b> Center for Learning, Lower Moyer	C3
<b>A</b> Center for Scholarship and Faculty Development, DH 349	B2
<b>J</b> Center for Worship, Alexander 102	D4
<b>A</b> College of Arts and Sciences, DH 350	B2
<b>S</b> Collegium (Commuter Lounge), Main Level SUB	D3
<b>G</b> Computer and Information Systems, Lower Marston	C3
Conference Services, US	(29) B4
<b>I</b> Disability Support Services, Lower Moyer	C3
<b>A</b> Diversity, Equity, and Inclusion, DH 253	B2
<b>D</b> Educational Technology and Media, Lower Ames	B3
<b>K</b> E.E. Bach Theatre, McKinley	D4
<b>A</b> Enrollment Management and Marketing, DH 258	B2
Falcon Newspaper, 3210 4th Ave. W.	(68) D4
<b>S</b> Falcon's Landing, Main Level SUB	D3
<b>G</b> Health Services, First Watson	C3
Housing Services, US	(29) B4

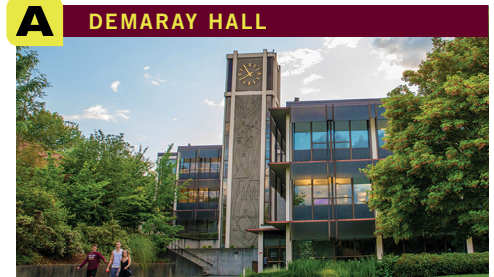
NAME	LOCATION
Image Journal, 328A W. Nickerson	(74) C1
INTERLINK A.C.E. Language Institute, 18 W. Dravus	(Not shown)
<b>S</b> John Perkins Center, Second Floor SUB	D3
Mailing and Copying Services, 323 W. Nickerson	(78) D2
Meal Plan Services, US	(29) B4
<b>A</b> President's Office, DH 210	B2
<b>A</b> Provost's Office, DH 210	(8) B2
<b>G</b> Psychology Labs, Lower Watson	C3
Residence Life, Second Floor SUB	D3
Safety and Security, 601 W. Emerson	(61) A2
<b>U</b> School of Business, Government, and Economics, McKenna	C2
<b>H</b> School of Education, Peterson	C3
<b>Y</b> School of Health Sciences (Nursing), 6 W. Nickerson	(87) F3
<b>G</b> School of Psychology, Family, and Community, First Marston	C3
<b>J</b> School of Theology, Alexander	D4
<b>X</b> Seattle Pacific Foundation, 4 W. Nickerson St.	(85) F3
<b>J</b> Seattle Pacific Seminary, Alexander	D4
Senior Art Studio, 101 W. Nickerson	(Not shown)
<b>A</b> Student Academic Services, DH 120	B2
<b>G</b> Student Counseling Center, First Watson	C3
<b>A</b> Student Financial Services, DH 10	B2
<b>S</b> Student Life, Second Floor SUB	D3
<b>C</b> University Communications, Lower Weter	B3
<b>S</b> University Ministries, Second Floor SUB	D3
<b>A</b> University Recruitment and Admissions, DH 258	B2
<b>C</b> Weter Student Lounge, Main Level Weter	B3

WELCOME TO  
**Seattle Pacific University**

Discover the places where Seattle Pacific students encounter rigorous academics, hang out with friends, and pursue their callings on our beautiful campus just minutes from Seattle's downtown core.

Is this the place where your future starts?

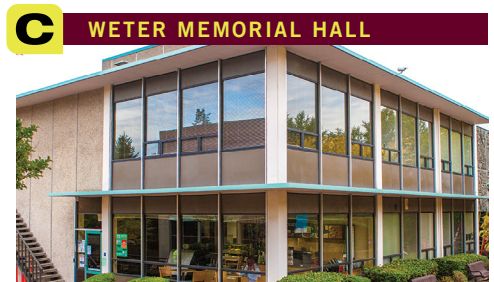
**START HERE**



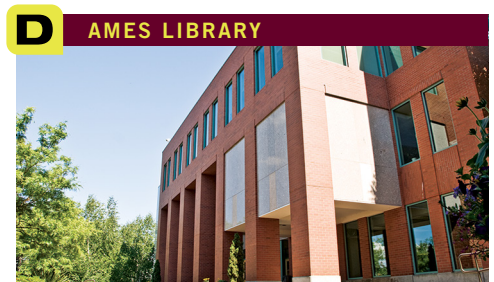
Aside from Undergraduate Admissions, you'll also find the Office of the President, Student Academic Services, Student Financial Services, and classrooms.



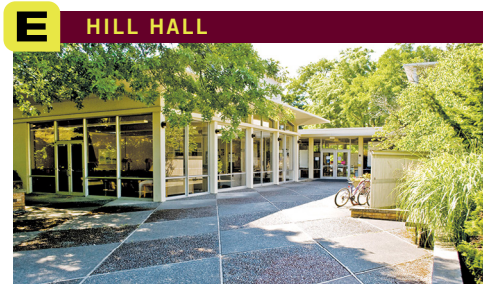
We hope you get a chance to taste why we brag about our food in Gwinn our award winning dining hall. Before you go inside, take a look at Martin Square. This is a popular place to hang out, especially on sunny days.



Weter Memorial Hall holds classrooms, offices, and a lounge area with a coffee bar where students can chat or study.



The Ames Library collections include digital, print, and archival materials. Plus, technology help and resources are available at the Tech Desk.



Nestled among trees, Hill Hall houses students and has a fitness center available to all students who live on campus.



Ashton is the largest SPU residence hall, and perched on a hill, is known for having the best views on campus.



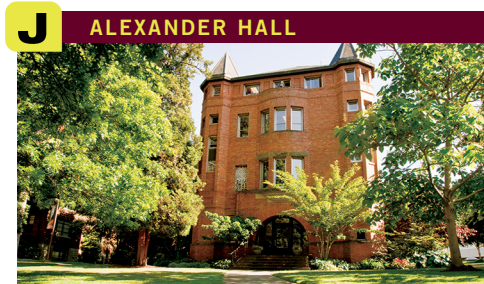
Back down the hill, Marston/Watson houses the School of Psychology, Family, and Community, the Division of Arts and Humanities and the Health Center.



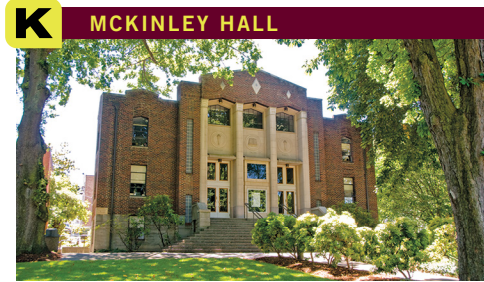
Welcome to Tiffany Loop! Peterson Hall is home to the School of Education and the Department of Family and Consumer Sciences (Food and Nutritional Sciences, Clothing and Textiles, and Interior Design).



Moyer may be the smallest residence hall, but it is known for its thriving community. Downstairs, the Center for Learning is available to any student who needs academic help, along with Disability Support Services and Study Abroad.



Alexander Hall is the oldest building on campus. It's home to the School of Theology and the Social Sciences. The stained glass window on the second floor is part of the University's first chapel.



You may hear students rehearsing for a show. This building has two stages, and the Theatre Department puts on three mainstage productions each year, plus student directed productions.



Jam away in Crawford, home to SPU's practice rooms, as well as music offices and classrooms.



Tuesday mornings, this is where students gather for chapel services. SPU has a strong partnership with First Free Methodist Church, adjacent to campus.



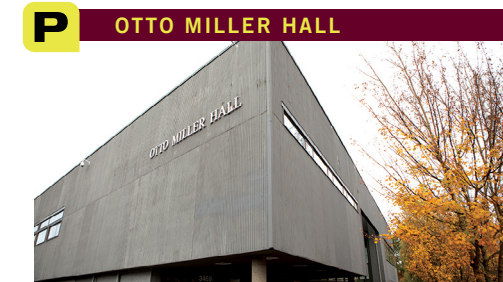
Take a look at student and faculty art in the Seattle Pacific Art Center Gallery (SPAC). Open Monday through Thursday, 9 a.m.-4 p.m.



The newly renovated Nursing building features active-learning classrooms, a state-of-the-art clinical learning lab, and a hospital/clinic simulation suite that allows students to put their learning directly into practice.



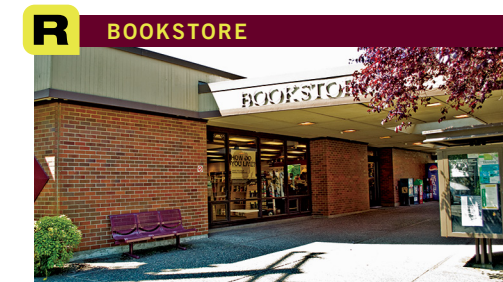
Royal Brougham is the hub for SPU's NCAA Division II athletic teams and intramurals. It houses an indoor gym, a gymnastics center, the crew shell house, a fitness center, and a weight room.



Named after a beloved SPU physics professor, Otto Miller Hall is the place where Engineering, Physics, Computer Science, Math, and Science Education majors take most of their classes.



Inside these walls, students are recording and producing music in state-of-the-art recording studios and a music technology lab. Nickerson Studios also has rehearsal space and a performance hall.



Managed by Barnes and Noble, the bookstore carries textbooks, cards, magazines, SPU apparel, and more.



At the SUB, you'll find food, student government offices, and the commuter student lounge. Other offices, such as Student Life, University Ministries, Multi-Ethnic Programs, the John Perkins Center, and the Center for Career and Calling, are upstairs.



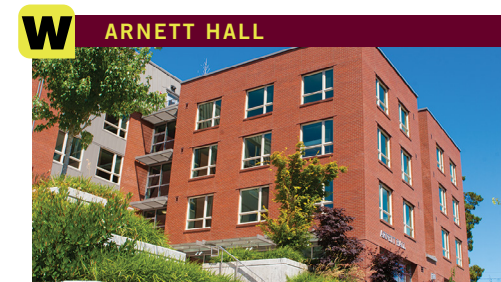
Eaton Hall, which holds our Biology, Chemistry, and Biochemistry departments, and our greenhouse, has won awards for its sustainable design and construction.



Home to the School of Business, Government, and Economics, McKenna also houses SPU's mentor program, which is open to all students. Business Administration happens to be one of the most popular majors at SPU.



Emerson residence hall has suite-style rooms, a fitness center, underground parking, and a courtyard and garden area.



SPU's newest residence hall, Arnett, features suite-style rooms, sweeping views, and a rooftop deck.



Ranked a "Best National University"  
by U.S. News & World Report

**The future begins at Seattle Pacific.**

Visit [spu.edu/admissions](http://spu.edu/admissions)

Seattle Pacific University  
Office of Undergraduate Admissions  
3307 Third Ave West, Suite 115  
Seattle, WA 98119-1922

206-281-2021  
800-366-3344

[admissions@spu.edu](mailto:admissions@spu.edu)