



Children's Standing Advisory Committee

Phase 3 MUP – Project Copper

August 31, 2020



Seattle Children's®
HOSPITAL • RESEARCH • FOUNDATION

Patrick



Presentation Overview

- Welcome and Introductions (:10) (Richard)
- Housekeeping (:05) (Richard)
- Project Copper Project Discussion (:35)
 - SAC Schedule & Role in Review Process (Maureen)
 - Project Need / Priority (Vickie)
 - Project Overview, Sand Point Way Improvements, and perimeter views (ZGF)
 - Preliminary Construction Logistics (Sellen)
- Campus Update - Schedule and Progress (:15) (Vickie, Dave S./Sellen)
- Public Comment (:10)
- Committee Deliberation (:45) (Committee)
- Adjournment and scheduling of next meeting (Richard)

DON/SDCI Introduction



- Status of EIS Addendum and Notice of Availability
- Comment Period
- The Director's decision is appealable
- Status of MUP Application
- SAC Schedule



Emmy & Dad



Robert Makes Games
@RobertJSchuster



Today my daughter turns three. She's happy, learning, growing, and sassy as heck. Without all of the love, support, and modern medical technology (provided almost exclusively by [@seattlechildren](#)) we'd have never made it this far. Thank you [#TeamEmmy](#)! Here's to many many more.



Why is this project imperative?

MIMP Masterplan



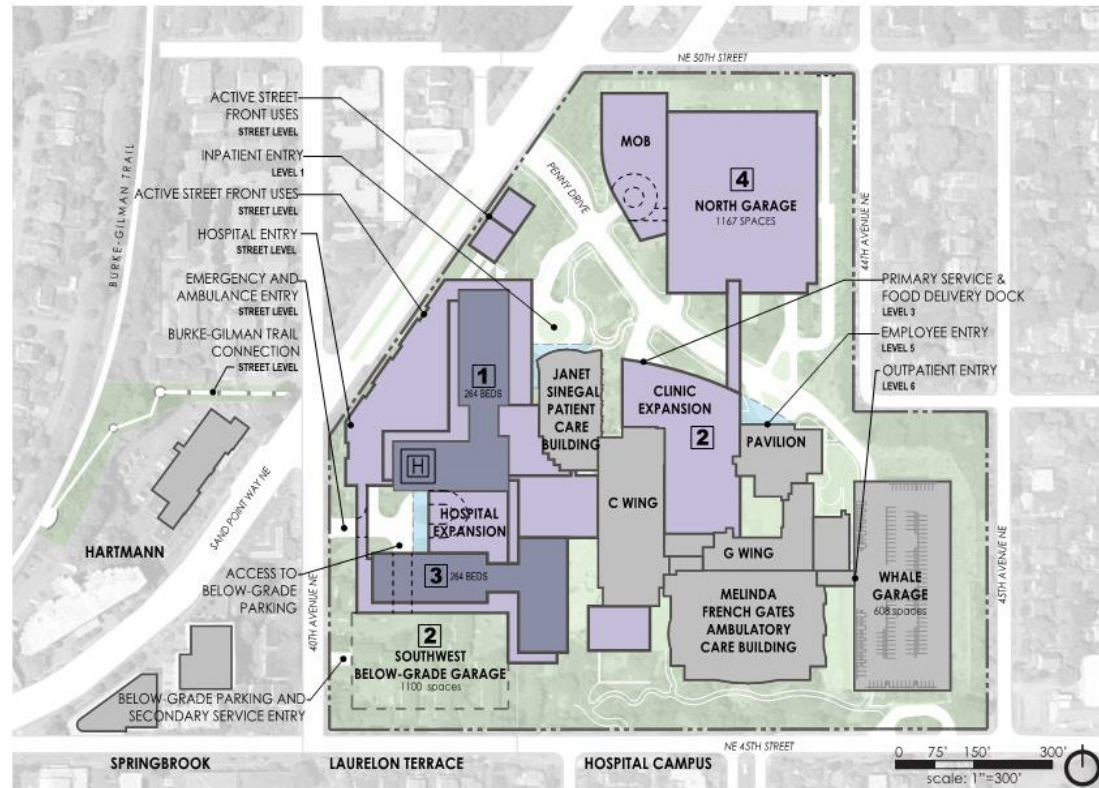
FIGURE 24:
MASTER PLAN

- LEGEND**
- Property Line
 - Campus Grounds
 - Existing Buildings and Parking Garage
 - Lower Buildings and Parking Garages
 - Taller Buildings
 - Covered Walkway
 - Roadways and Surface Parking
 - 1 Proposed Construction Sequence
 - H Helicopter
 - Service and Fire Access

STATISTICS

Hospital Campus	
Beds	500 - 600*
Building gross floor area	2.125 million gsf
Parking spaces	3,100
FAR	1.9

*addition of 250 - 350 beds



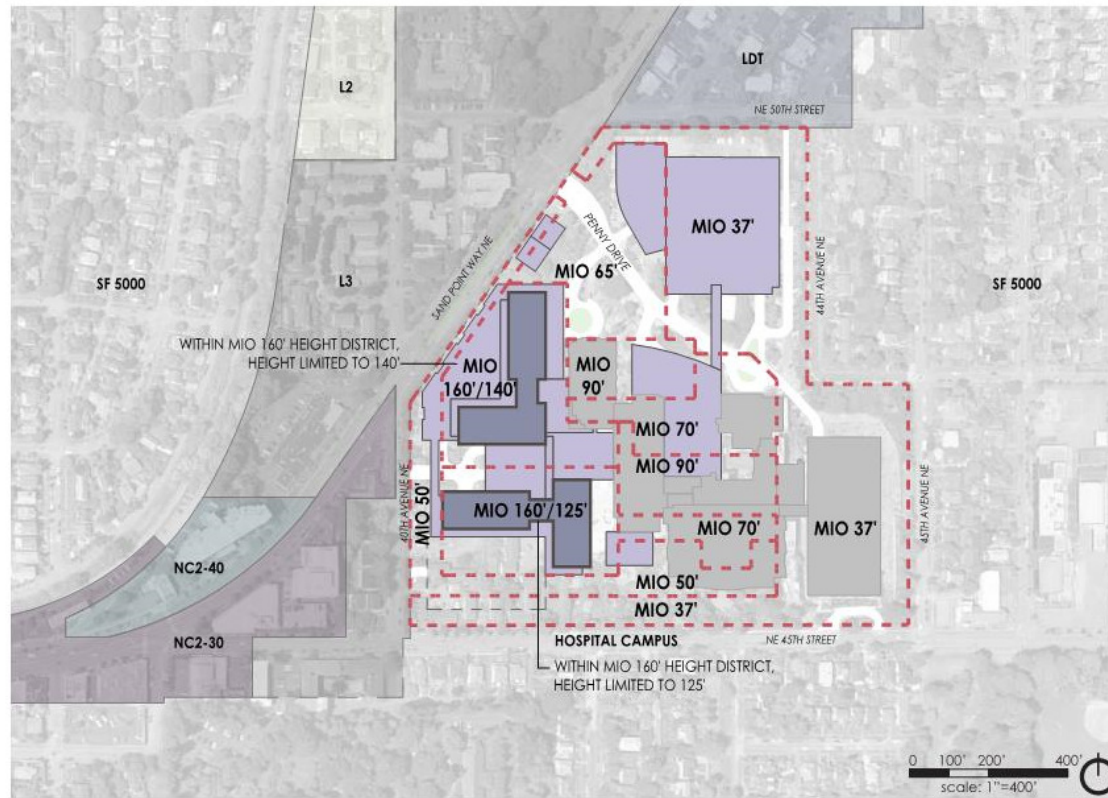
MIMP MIO Boundaries



FIGURE 34: FUTURE ZONING AND MAJOR INSTITUTION OVERLAY

- LEGEND
- MIO Height District Boundary
 - Roadways and Surface Parking
 - Lower Buildings
 - Taller Buildings

The Major Institution Overlay establishes height limits under the Major Institutional Master Plan



Slide 7

A15

label major institution overlay (hight limit) - add note in margin to define

Author, 6/19/2020

MIMP Landscape Buffers



The MIMP establishes a 75' landscape edge buffer on the North, East, and South edges of the campus.



Existing Campus Aerial



Site Scope



Site Plan

PRELIMINARY SITE PLAN - PHASE 3
N.T.S.

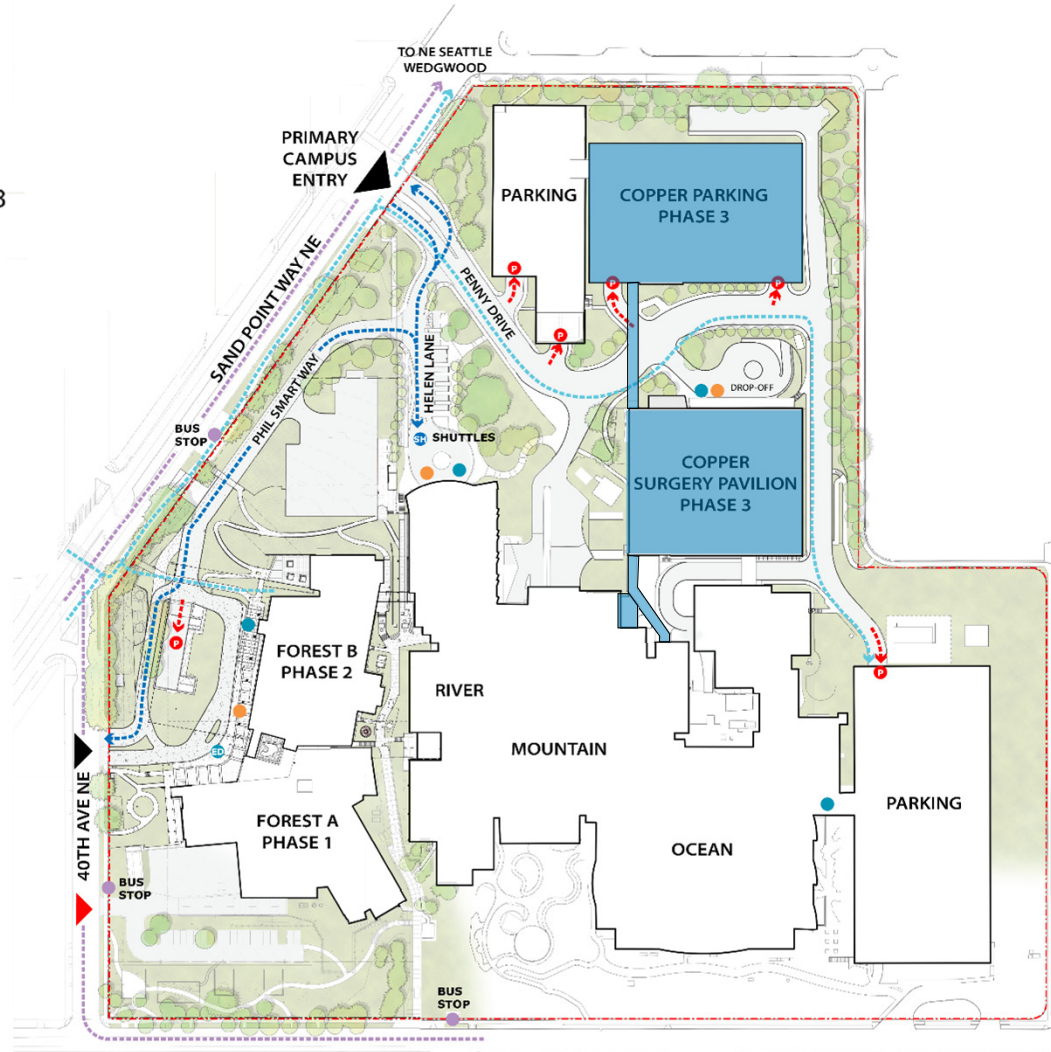
- PUBLIC ENTRANCE
- STAFF ENTRANCE
- BUS STOP
- SH SHUTTLE DROP-OFF
- P PARKING ENTRANCE
- BUS ROUTE
- BICYCLE ROUTE
- SHUTTLE ROUTE
- PROPERTY LINES

Realignment and regrading
of east part of Penny Dr.

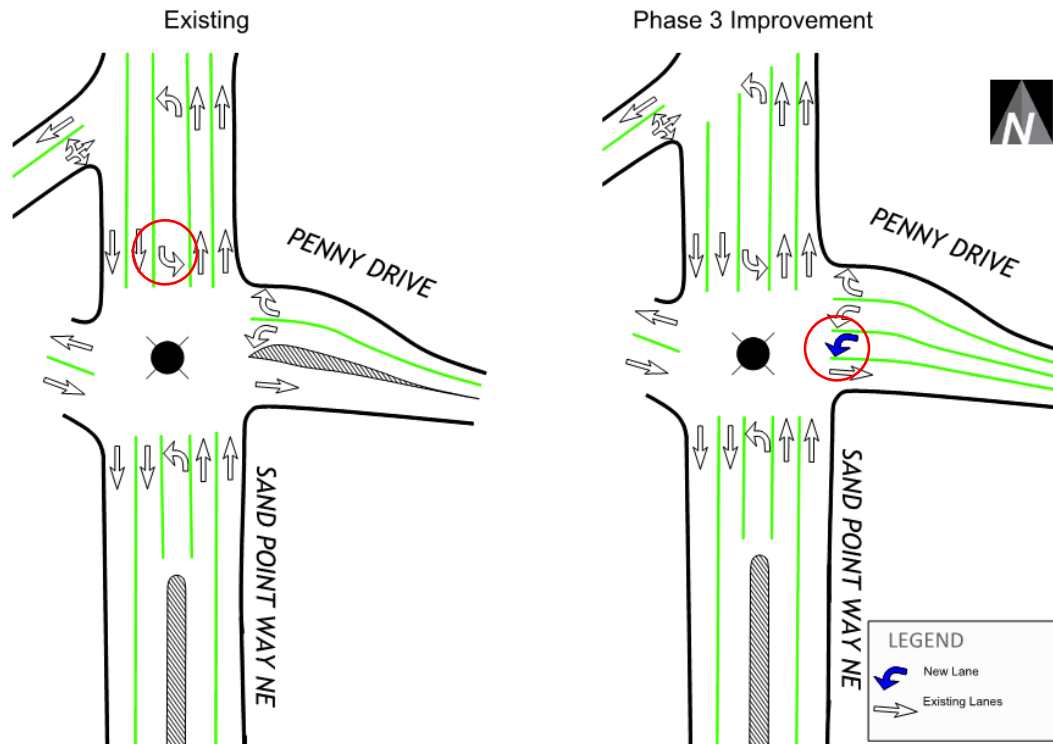
New parking Garage

New Surgery Pavilion

Intersection improvements
at SPW and Penny Drive



Traffic Improvements



- Maintains Main Campus Entry w/ New Mast Arm Signals at Intersection
- Maintains Curb to Curb Width of Penny
- Provides Ramping
- Provides protected left turn signals from SPW to Penny southbound, and from Penny to SPW southbound
- Accommodates Increase in vehicle capacity at Intersection and improves pedestrian safety.

Sand Point Way & Penny Drive Existing Versus Proposed Channelization

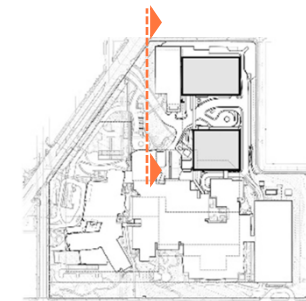
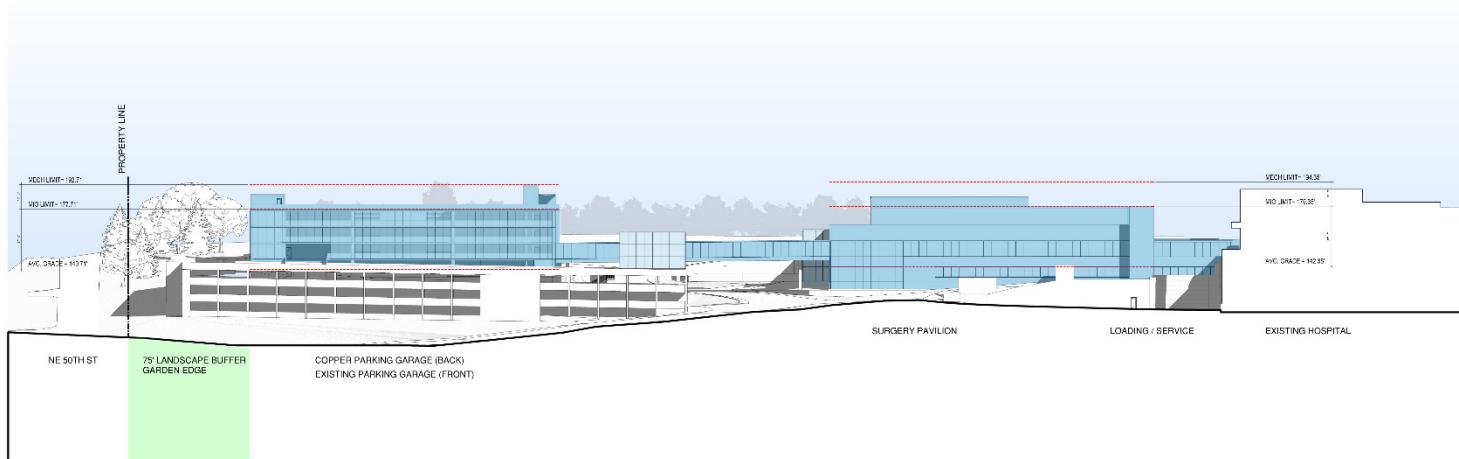
Seattle Children's Phase 3



Site Section – West Elevation



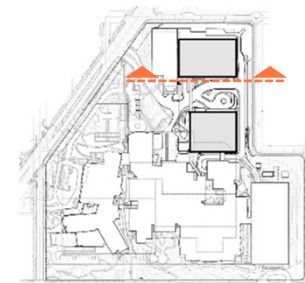
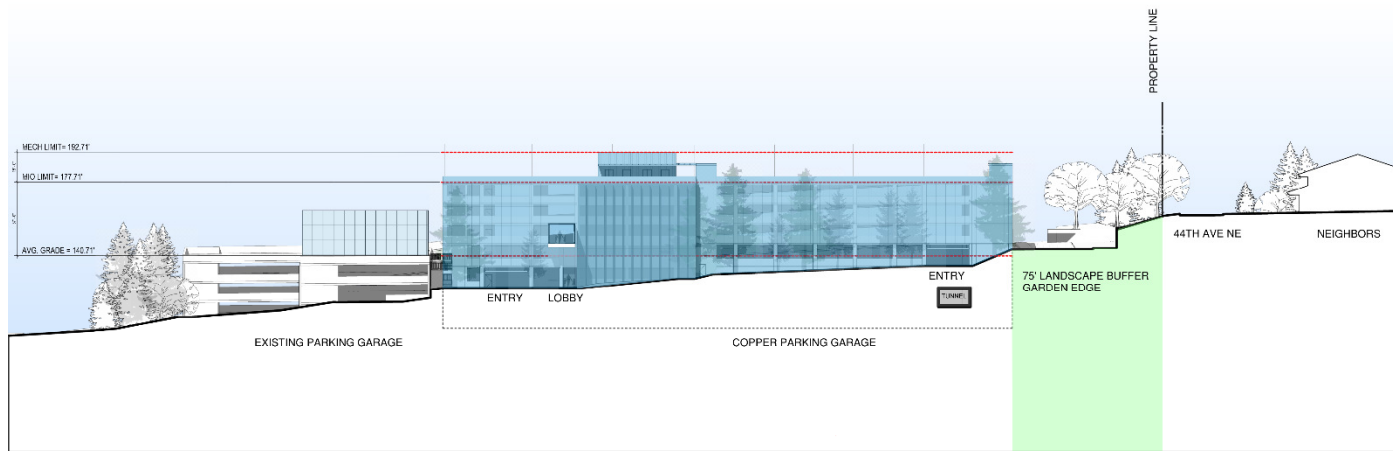
View East - Elevation Parking Garage & Surgery Pavilion



Site Section – South Elevation



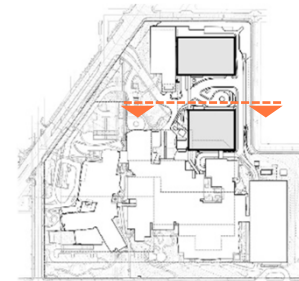
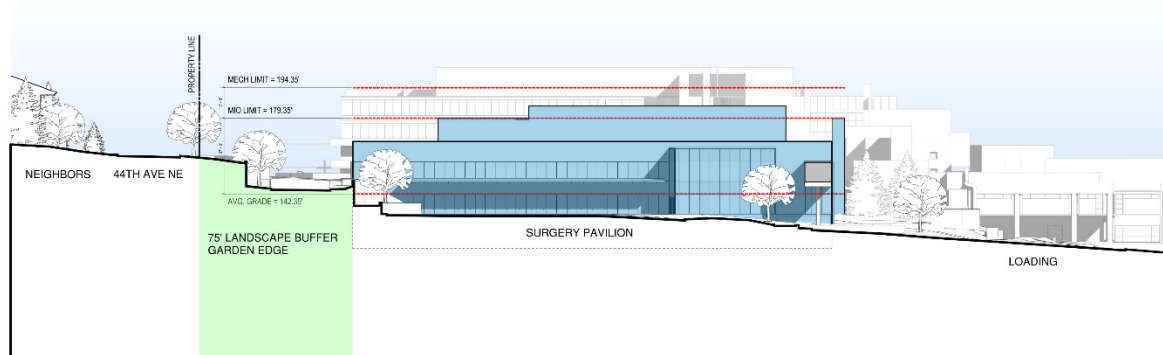
View North - along Penny



Site Section – North Elevation



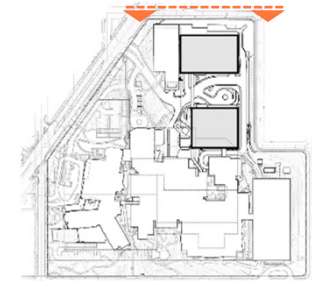
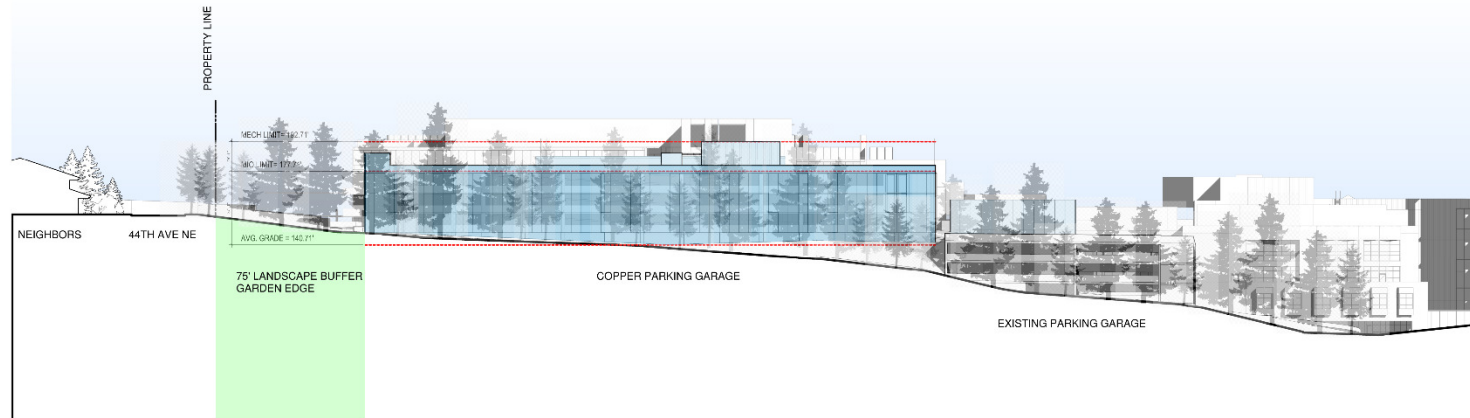
View South - along Penny



Site Section – North Elevation



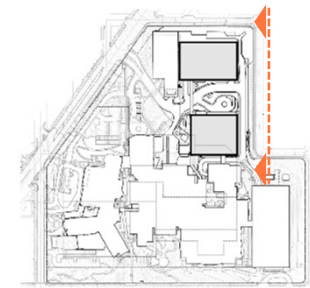
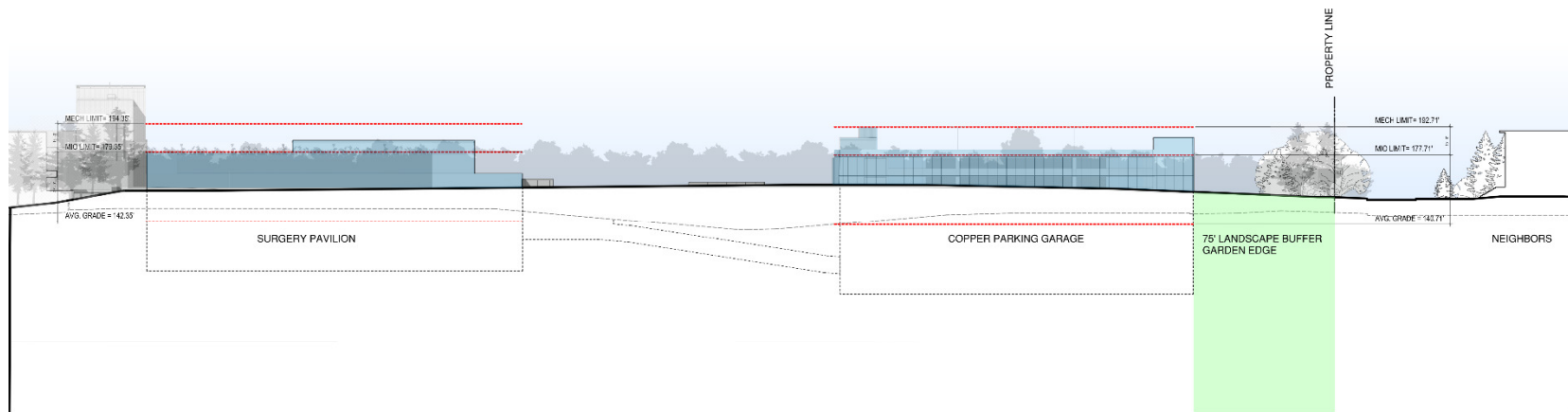
View South - along NE 50th St



Site Section – East Elevation



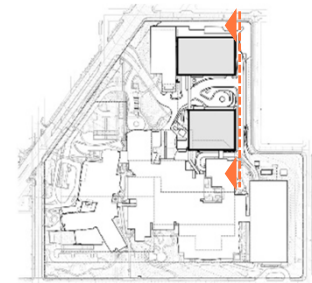
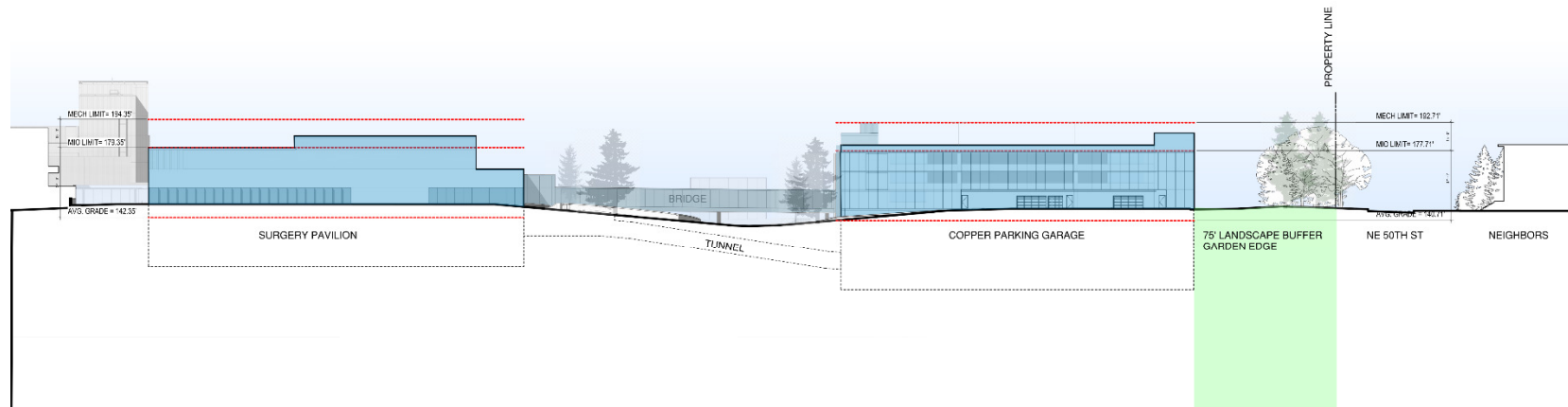
View West - along 44th Ave NE



Site Section – East Elevation



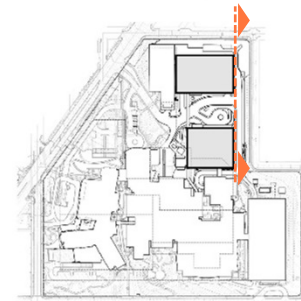
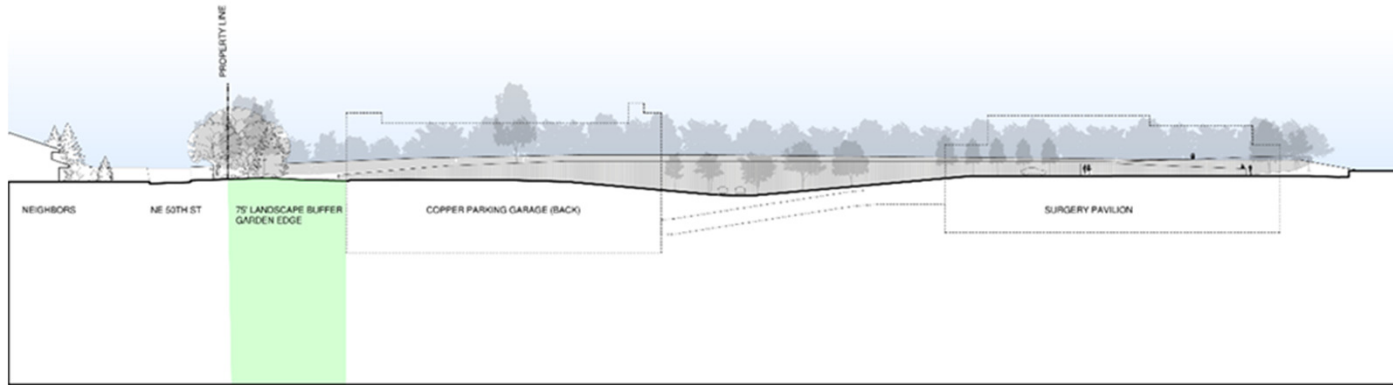
View West - Elevation Surgery Pavilion & Parking Garage - along Penny (North/South)



Site Section – Landscape Elevation



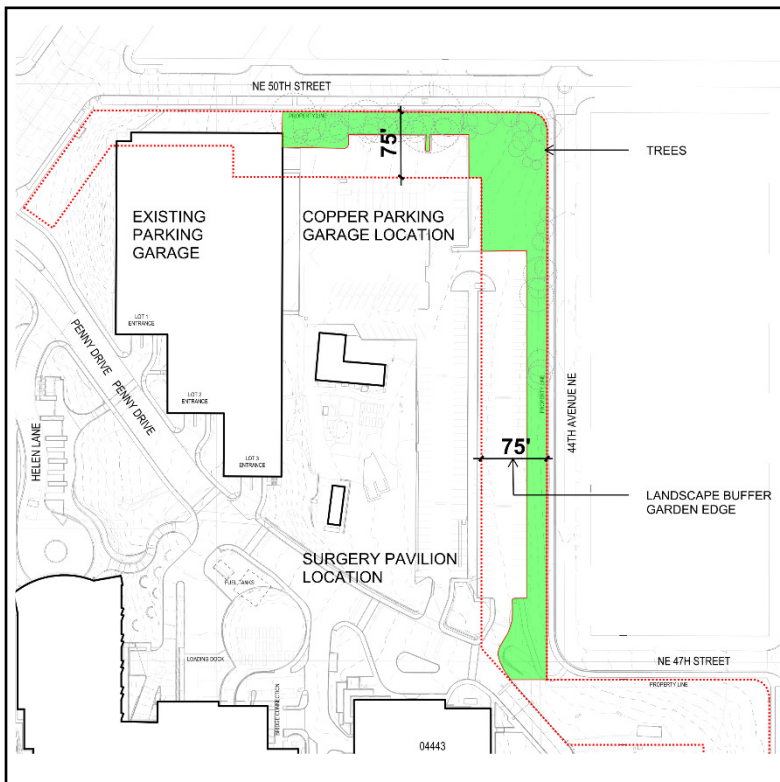
View East – along Penny N/S



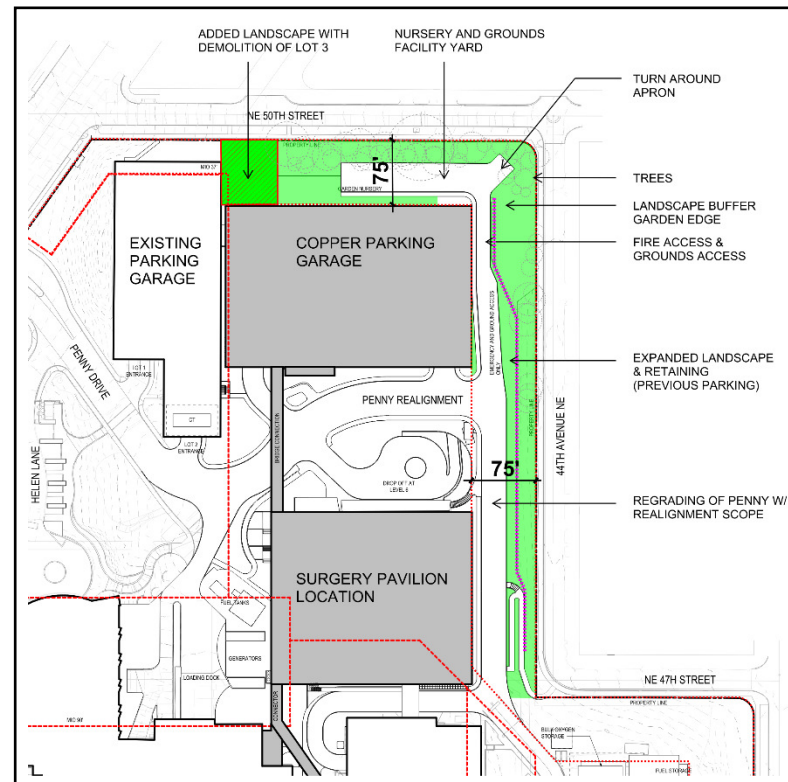
Landscape Buffer – Garden Edges



Current State Condition



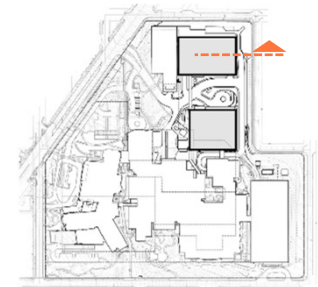
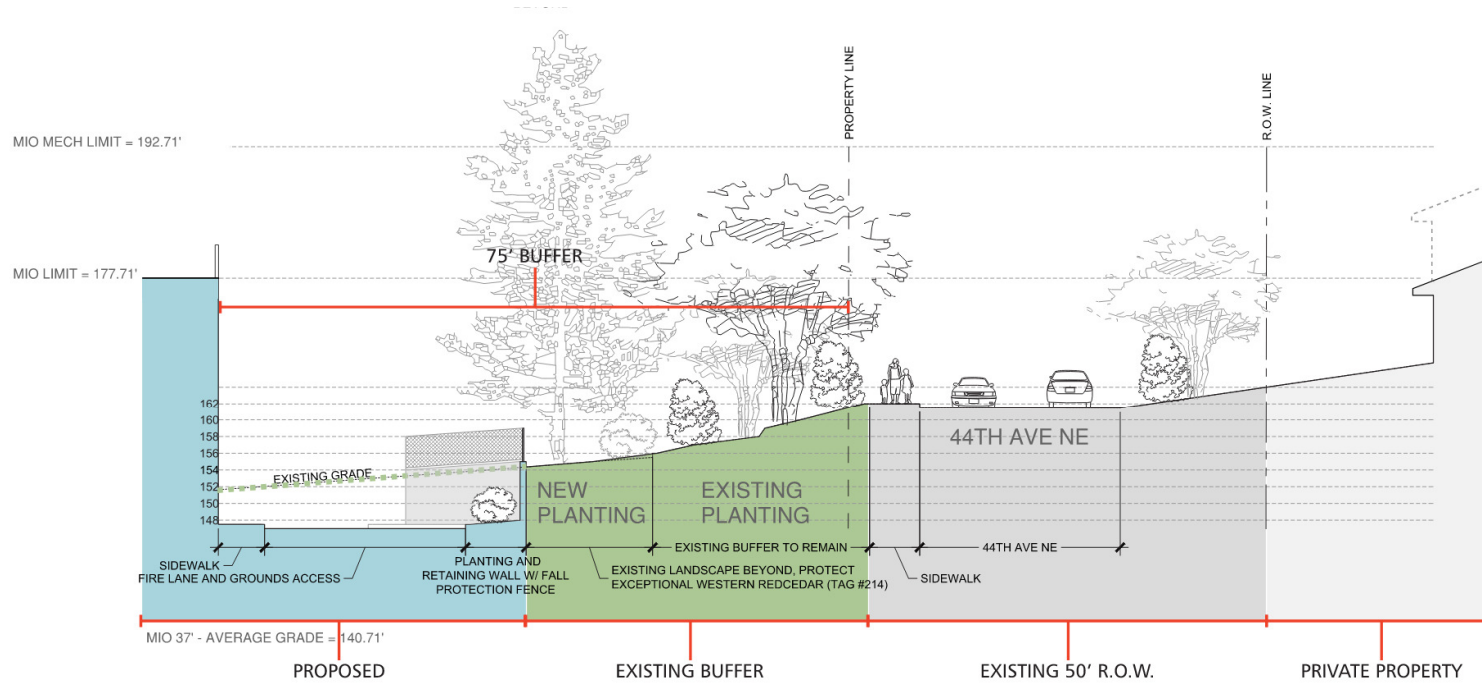
Proposed Condition





Landscape Buffer Section

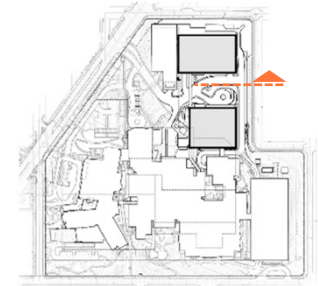
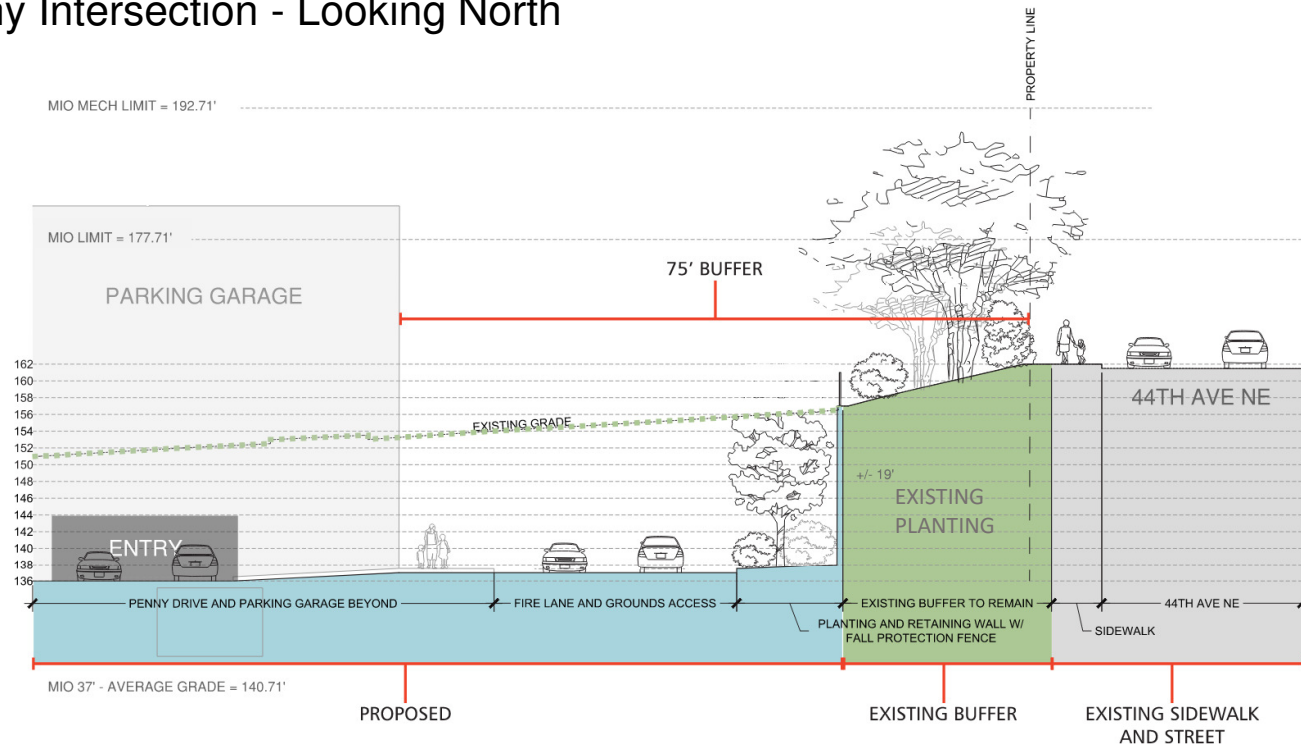
Parking Garage Section @ Tall Pine Tree - Looking North



Landscape Buffer Section



Penny Intersection - Looking North



Slide 22

A34

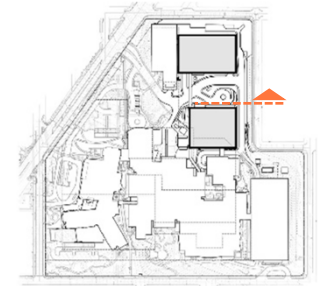
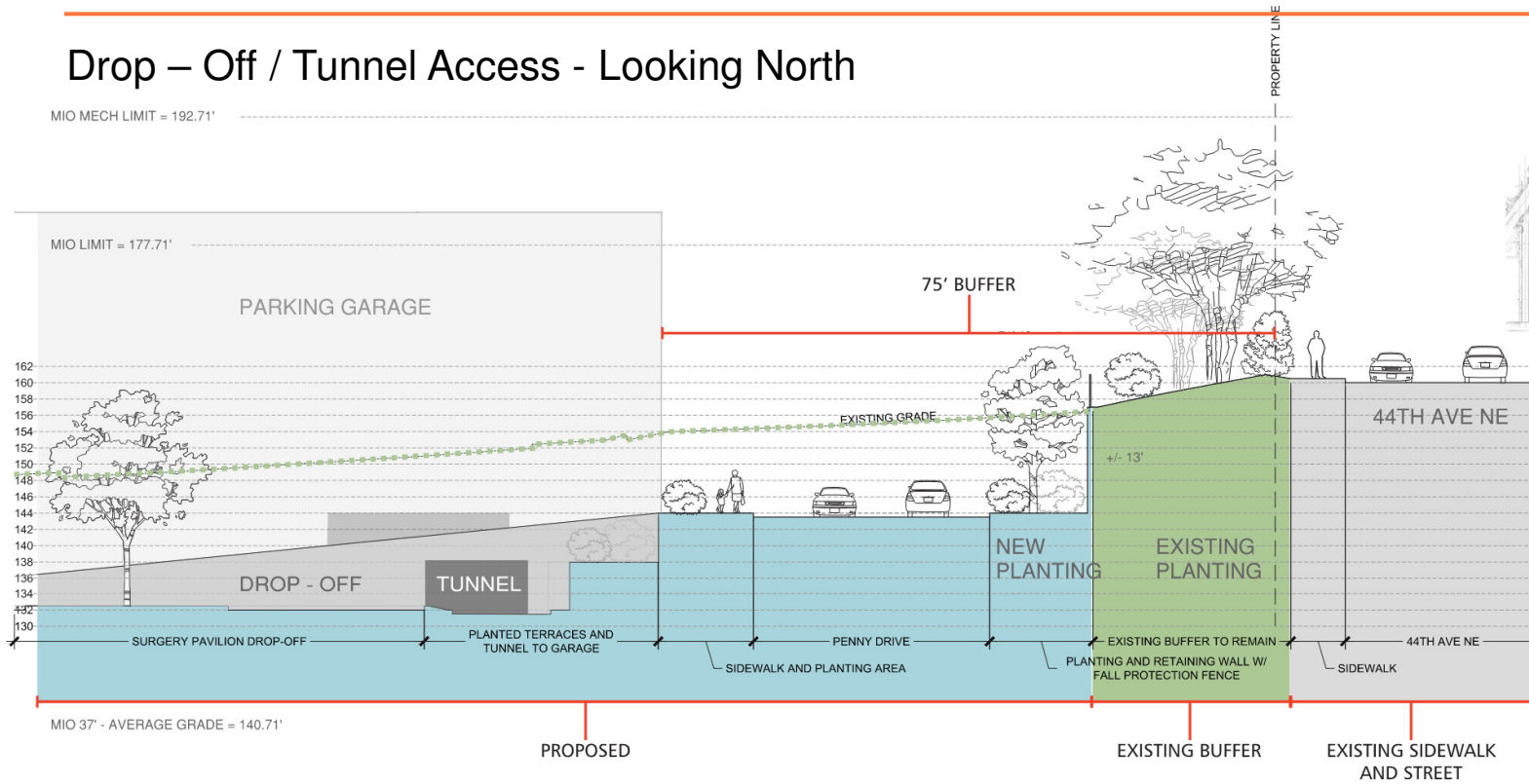
talking points specific to this slide _____

Author, 6/23/2020

Landscape Buffer Section



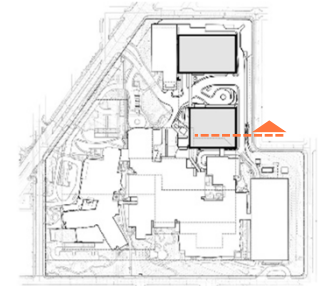
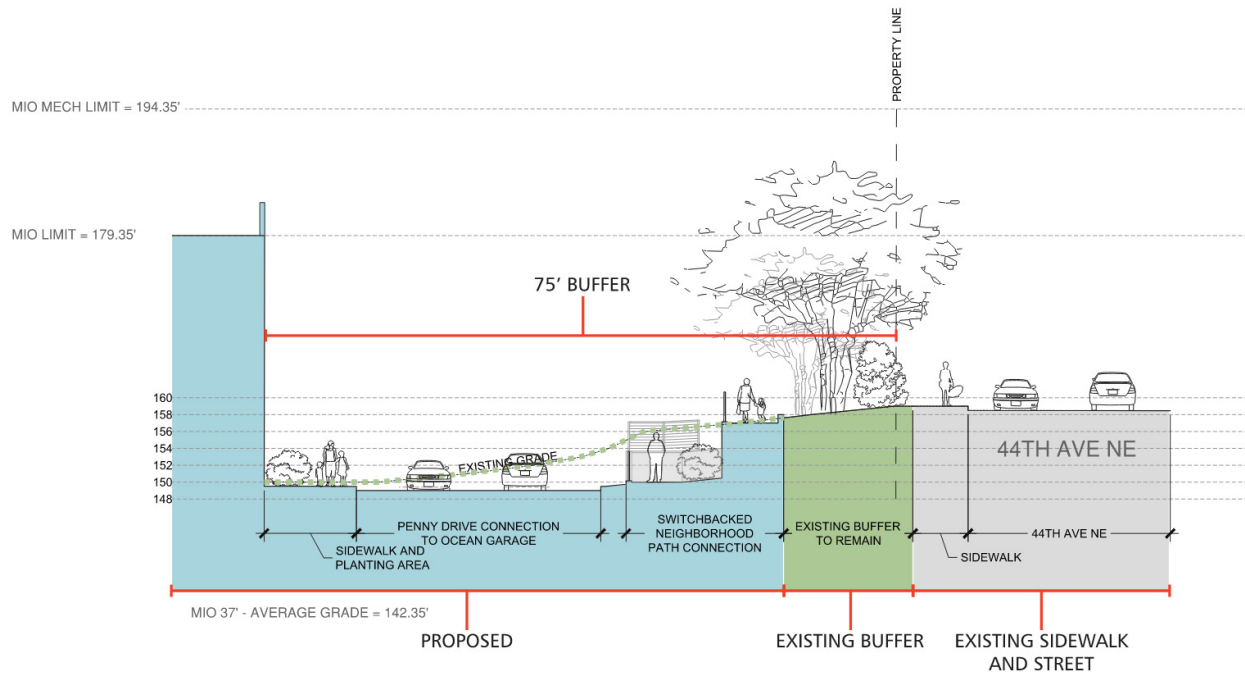
Drop – Off / Tunnel Access - Looking North



Landscape Buffer Section



Surgery Pavilion Section - Looking North



A39

Surgery Pavilion

On Campus View South from Proposed Parking Garage



A39

Penny View East On Campus View of Surgery Pavilion, Parking Garage and Bridge



MIMP Viewpoint 7 – At Sand Point Way and Penny Dr.



MIMP Viewpoint 6 – From 44th Ave NE



MIMP Design Guidelines



Specific Design Guidelines are required by Seattle Children's approved MIMP to assist both the Standing Advisory Committee (SAC) and Children's in achieving the desired character envisioned for the campus while harmonizing the hospital and surrounding neighborhood landscape and building forms. These guidelines were reviewed by a subcommittee of the Design Commission and will be reviewed by the full Commission. After taking public comment, the Design Commission referred the Draft Design Guidelines to DPD for final approval. These are the approved guidelines.



Street Frontage Edge Examples



Garden Edge Examples



MIMP Design Guidelines

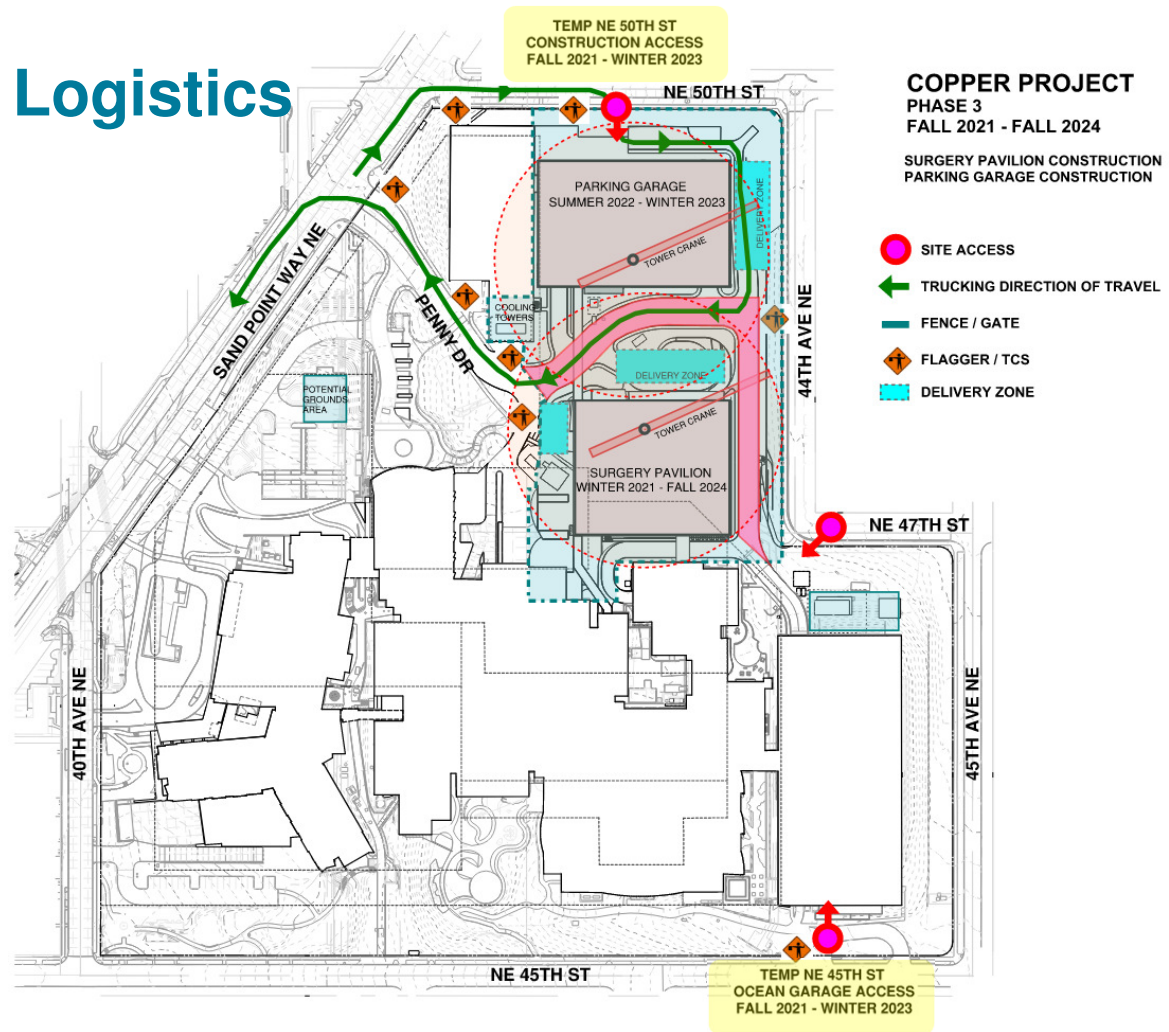


Site Design

- Campus Character
- Public Entrances and Access Points
- Streetscape, Pathways and Sidewalks
- Landscaping
- Safety and Lighting
- Parking



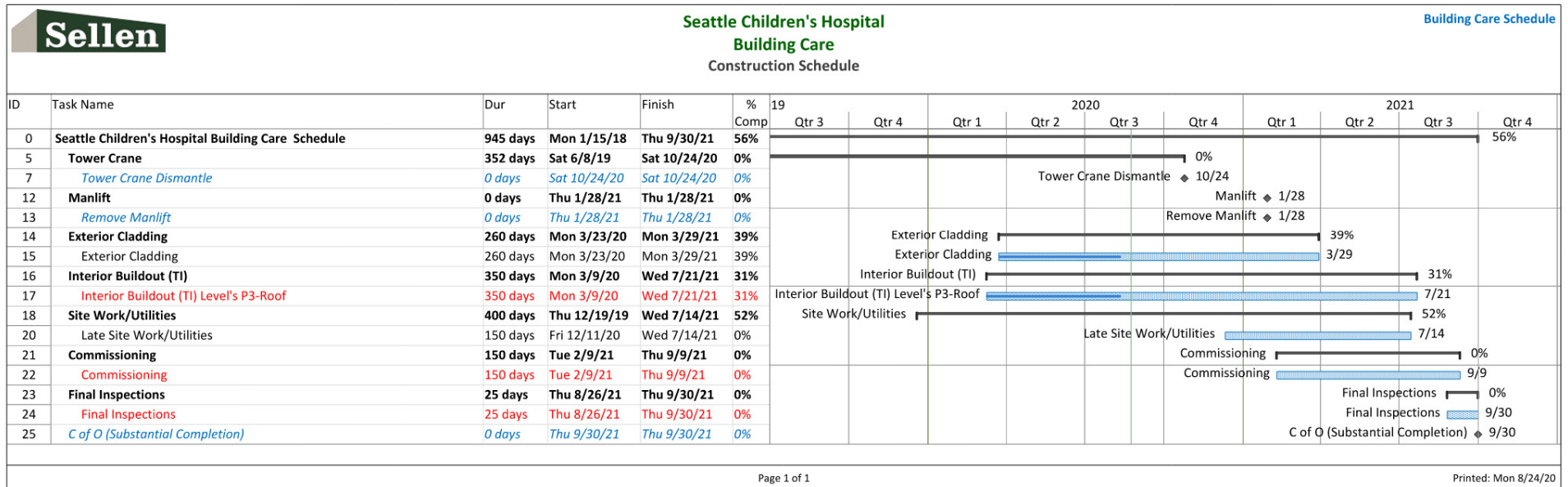
Construction Logistics



Aerial Forest B – Building Care



Forest B – Building Care Construction Schedule





Upcoming Grounds Maintenance

- Bartlett Tree Experts is scheduled to perform landscaping work at the Seattle Children's hospital campus from Monday, Sept. 14, to Friday, Sept. 18.
- The work includes removing trees that are dying or hazardous, pruning healthy trees to remove dead or low branches, and removing branches leaning on structures.
 - We expect this work will have minimal impact on the perimeter tree buffer.
- Activities will take place throughout the hospital campus, including along the perimeters.
- Crews will use chainsaws and chippers, which will generate noise between the hours of 8 a.m. to 2:30 p.m.
- You will see a Construction Blog about this work soon.

Public Comment



Feedback and Next Steps



- If you have feedback, please send it to:

Maureen Sheehan
Maureen.Sheehan@seattle.gov
City of Seattle, Department of Neighborhoods
Attn. Maureen Sheehan
PO Box 94649
Seattle, WA, 98124-4649

- To receive a meeting notification, please contact Maureen Sheehan (see above)



Seattle Children's[®]
HOSPITAL • RESEARCH • FOUNDATION

Hope. Care. Cure.[™]

