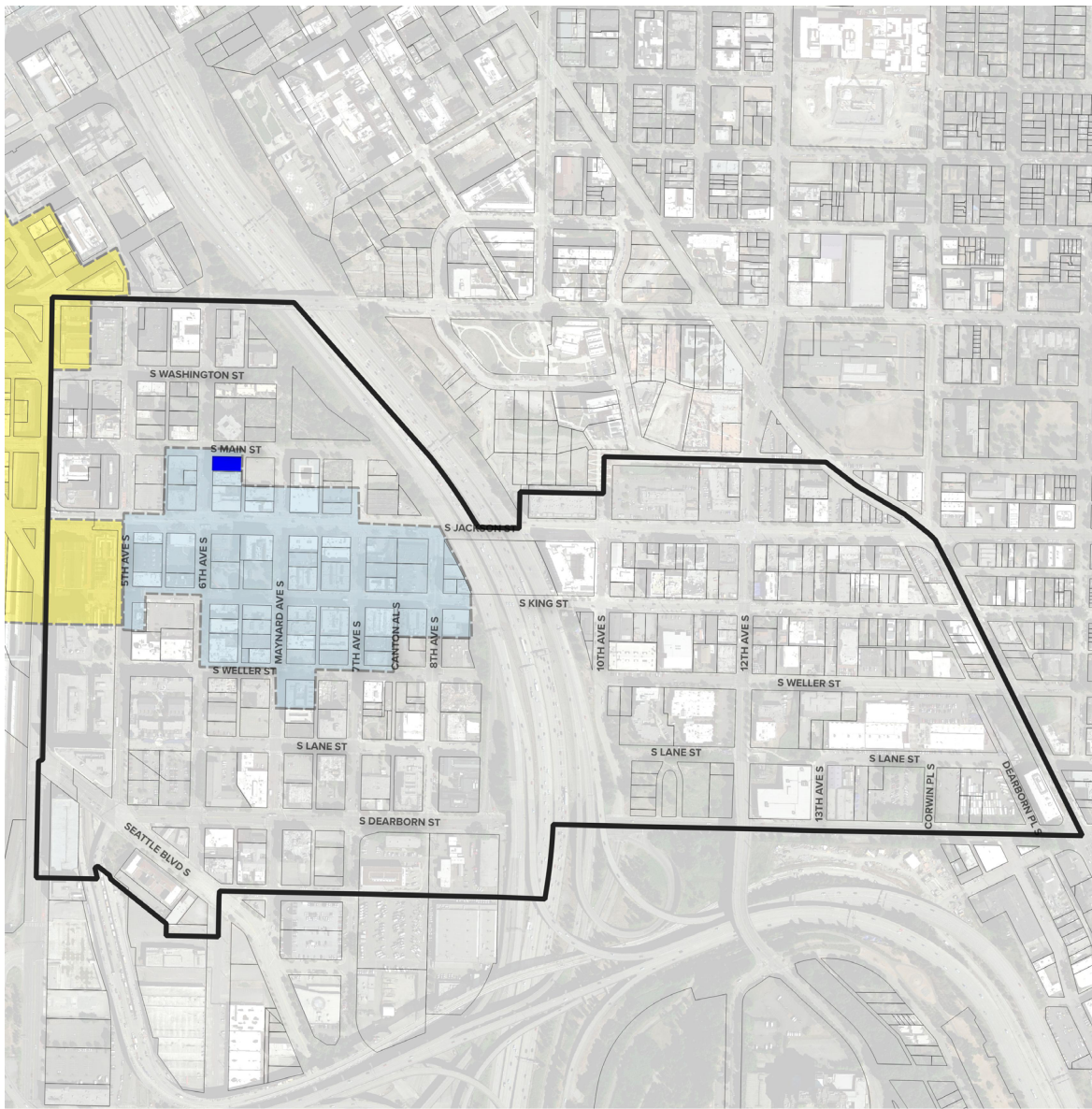


SITE PLAN AND MAPS



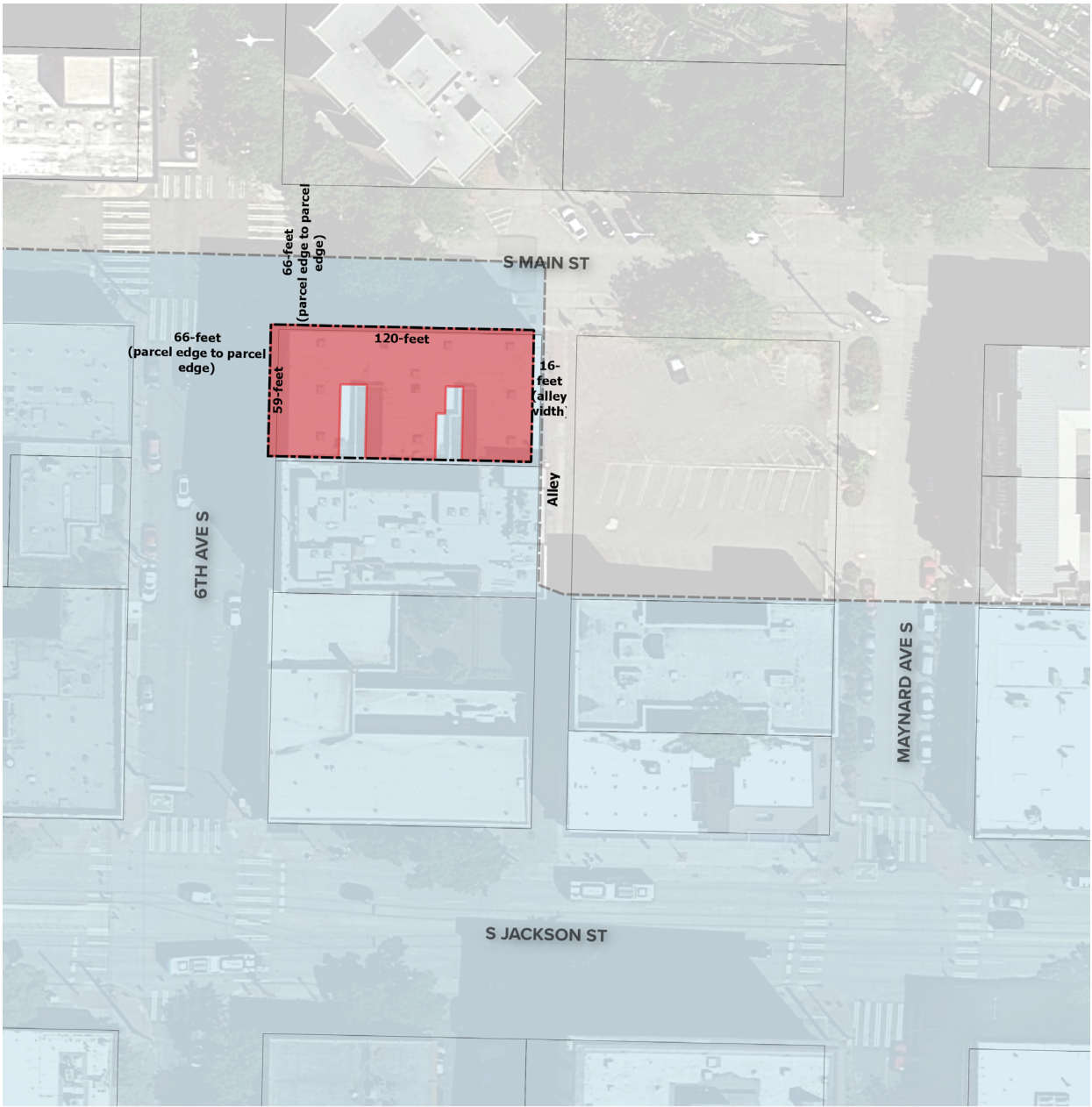
- Panama Hotel building parcel (nominated property)
- International Special Review District (SMC 23.66)
- National and Washington Heritage Register Historic Districts
 - Seattle Chinatown Historic District
 - Pioneer Square--Skid Road Historic District (Including Boundary Increases)
- King County parcels

District Map

Base 2020 aerial courtesy
Google.



Figure 1. District Map.
Overview of the Panama Hotel’s spatial location within the International Special Review District and the Seattle Chinatown National Register Historic District boundaries.



- Nominated property boundary (parcel)
- Panama Hotel building footprint (built to lot lines)
- Seattle Chinatown Historic District
- King County parcels

Nominated Property Map

Base 2020 aerial courtesy of Google.

The entire area shown within this map is within the International Special Review District.



Figure 2. Nominated property map
The nomination boundary with the building shaded in red.



Site Plan Map

- Nominated property boundary (parcel)
- Panama Hotel building footprint (built to lot lines)
- King County topography contours (feet)
- King County Parcels



Figure 3. Site Plan.

This map shows the nominated building (in red) and nomination boundary. Note the building's E-shaped footprint with the two lightwells providing daylight to interior rooms.

HISTORIC PHOTOGRAPHS



Figure 4. 1911 view of the recently completed Panama Hotel.

Source: *Seattle Times*, January 5, 1911. Image and caption courtesy 2014 Panama Hotel HSR.



Figure 5. Ca. 1920s view of the Panama Hotel following construction of the Northern Pacific Hotel (1914).

Source: undated photograph courtesy of Jan Johnson, reproduced from a photograph hanging in the Panama Hotel. Image and caption courtesy 2014 Panama Hotel HSR.



Figure 6. Ca. 1937 view of the building.

Source: Puget Sound Regional Archives, Property Record Card. Image and caption courtesy 2014 Panama Hotel HSR.



Figure 7. 1964 view of the Panama Hotel's northwest corner following installation of the marblecrete at the storefronts, cornice, and belt course.

Source: Puget Sound Regional Archives, Property Record Card. Image and caption courtesy 2014 Panama Hotel HSR.



Figure 8. 1941 Japanese Chamber of Commerce float picture taken on South Main Street. The photo is looking east with a portion of the Panama Hotel visible along the right side of the image. Source: Wing Luke Museum. Image and caption courtesy 2014 Panama Hotel HSR.



Figure 9. Ca. 1930s to 1940s photograph of the building's west facade. This photo shows the sign for the basement laundry, the sign above the southwest stairway for the hotel, and the large advertising space along the west facade. The street in the foreground is Sixth Avenue South, with north to the left. Source: Panama Hotel, digital image of print taken by Artifacts Consulting, Inc. Image and caption courtesy 2014 Panama Hotel HSR.



Figure 10. Undated view of the 609 1/2 basement access, 609, and 607 South Main Street (from left to right).

Source: Reproduced from photographs hanging in the Panama Hotel. Image and caption courtesy 2014 Panama Hotel HSR.



Figure 11. 1995 view of the men's bathhouse, looking southeast.

Source: John Stamets. Image and caption courtesy 2014 Panama Hotel HSR.

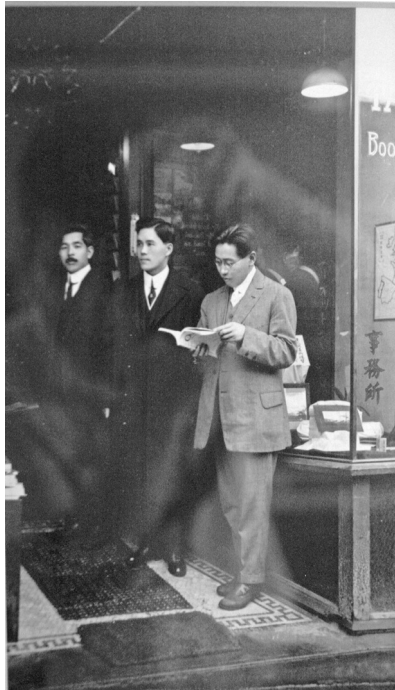


Figure 12. Between 1916 and 1937, photograph attributed to the 609 South Main Street commercial space and the Taisho-Do Bookstore.

Source: Reproduced from photographs hanging in the Panama Hotel. Image and caption courtesy 2014 Panama Hotel HSR.



Figure 13. Between 1916 and 1937, photograph attributed to the 609 South Main Street commercial space and the Taisho-Do Bookstore.

Source: Reproduced from photographs hanging in the Panama Hotel. Image and caption courtesy 2014 Panama Hotel HSR.



Figure 14. Unidentified persons associated with the hotel building.

However the building in the background is not the hotel. Source: Reproduced from photographs hanging in the Panama Hotel. Image and caption courtesy 2014 Panama Hotel HSR.



Figure 15. Between 1916 and 1937, photograph attributed to the 609 South Main Street commercial space and the Taisho-Do Bookstore.

Source: Reproduced from photographs hanging in the Panama Hotel. Image and caption courtesy 2014 Panama Hotel HSR.



Figure 16. Between 1916 and 1937, photograph attributed to the 609 South Main Street commercial space and the Taisho-Do Bookstore.

Source: Reproduced from photographs hanging in the Panama Hotel. Image and caption courtesy 2014 Panama Hotel HSR.



Figure 17. Unidentified persons associated with the hotel building.

However the building in the back-ground is not the hotel. Source: Reproduced from photographs hanging in the Panama Hotel. Image and caption courtesy 2014 Panama Hotel HSR.



Figure 18. 1910s to 1940s interior photograph.

Source: Reproduced from photographs hanging in the Panama Hotel. Image and caption courtesy 2014 Panama Hotel HSR.

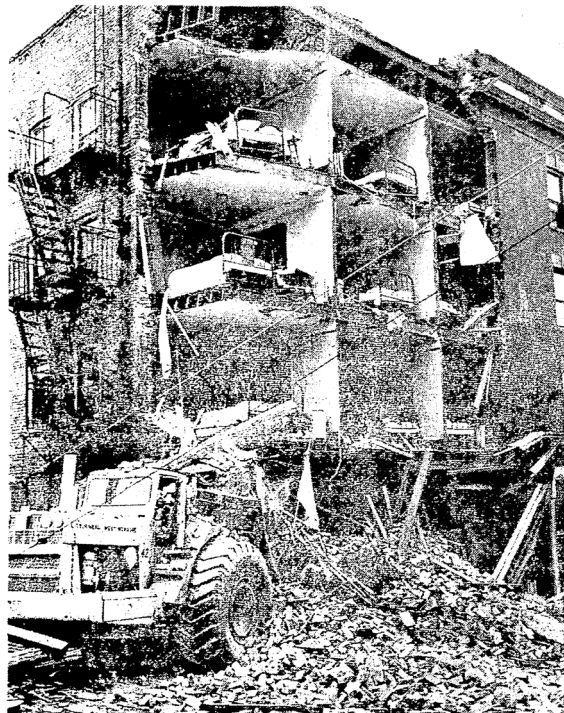


Figure 19. 1964 view of the hotel's northeast corner after the heavy equipment ran into the corner.

Source: *Seattle Times*, August 19, 1964. Image and caption courtesy 2014 Panama Hotel HSR.

CURRENT PHOTOGRAPHS



Figure 20. Northeast corner looking west along the front north facade.
Image courtesy 2014 Panama Hotel HSR.



Figure 21. West facade.
Image courtesy 2014 Panama Hotel HSR.



Figure 22. East facade.
Image courtesy 2014 Panama Hotel HSR.



Figure 23. Northeast corner looking west along the front north facade.
Image courtesy Eugenia Woo.



Figure 24. Northwest corner looking southeast.
Image courtesy Eugenia Woo.



Figure 25. West facade.
Image courtesy Eugenia Woo.



Figure 26. East facade.
Image courtesy Eugenia Woo.



Figure 27. New metal gate, looking south along 6th Avenue S.
Image courtesy Eugenia Woo.



Figure 28. Site, looking east along S Main Street.
Image courtesy Eugenia Woo.



Figure 29. Site, looking west along S Main Street.
Image courtesy Eugenia Woo.



Figure 30. Site, looking south along the alley on the east side of the building.
Image courtesy Eugenia Woo.



Figure 31. Storefronts, looking west from near the alley.
Image courtesy Eugenia Woo.



Figure 32. Storefronts, looking west.
Image courtesy Eugenia Woo.



Figure 33. Storefronts, looking south.
Image courtesy Eugenia Woo.



Figure 34. Storefronts, looking west.
Image courtesy Eugenia Woo.



Figure 35. Storefronts, looking east.
Image courtesy Eugenia Woo.



Figure 36. Storefronts, looking west.
Image courtesy Eugenia Woo.



Figure 37. Storefronts, looking east.
Image courtesy Eugenia Woo.



Figure 38. Storefront, looking south along Sixth Avenue S.
Image courtesy Eugenia Woo.

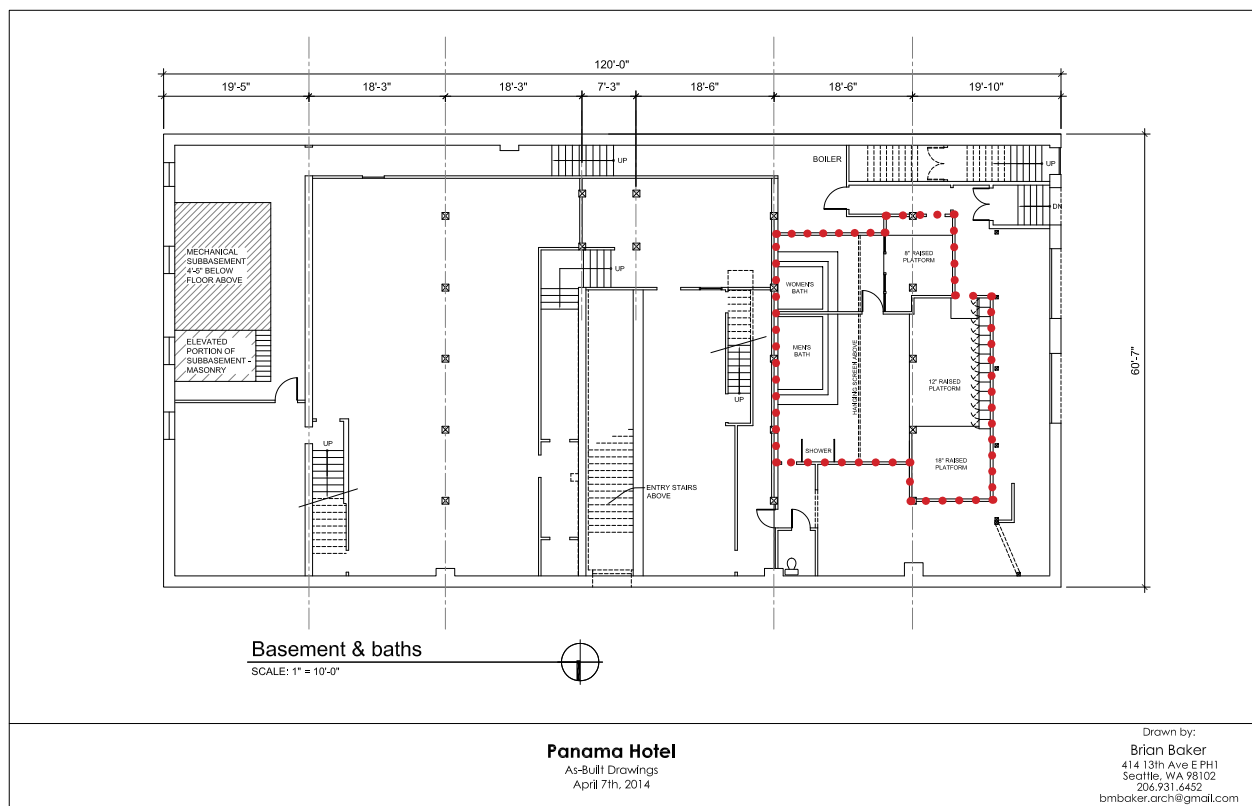


Figure 39. Hashideate Yu Bathhouse, bath location outlined in red for general location orientation.



Figure 40. Hashidate Yu Bathhouse, bath, looking southeast.

Image courtesy 2014 Panama Hotel HSR.



Figure 41. Bath, interior view.

Image courtesy Artifacts Consulting, Inc, 2014.



Figure 42. Hashidate Yu Bathhouse, looking northeast.

Image courtesy 2014 Panama Hotel HSR.



Figure 43. Hashidate Yu Bathhouse, view of lockers, looking west from the north end of the bath.

Image courtesy 2014 Panama Hotel HSR.



Figure 44. Basement area containing artifacts.

Image courtesy 2014 Panama Hotel HSR.



Figure 45. Basement laundry space, north of Hashidate Yu Bathhouse.

Image courtesy 2014 Panama Hotel HSR.



Figure 46. Basement mechanical space in southeast corner.

Image courtesy 2014 Panama Hotel HSR.



Figure 47. Light well typical conditions, looking south towards the Northern Pacific Hotel's exterior wall (brick).

Image courtesy 2014 Panama Hotel HSR.

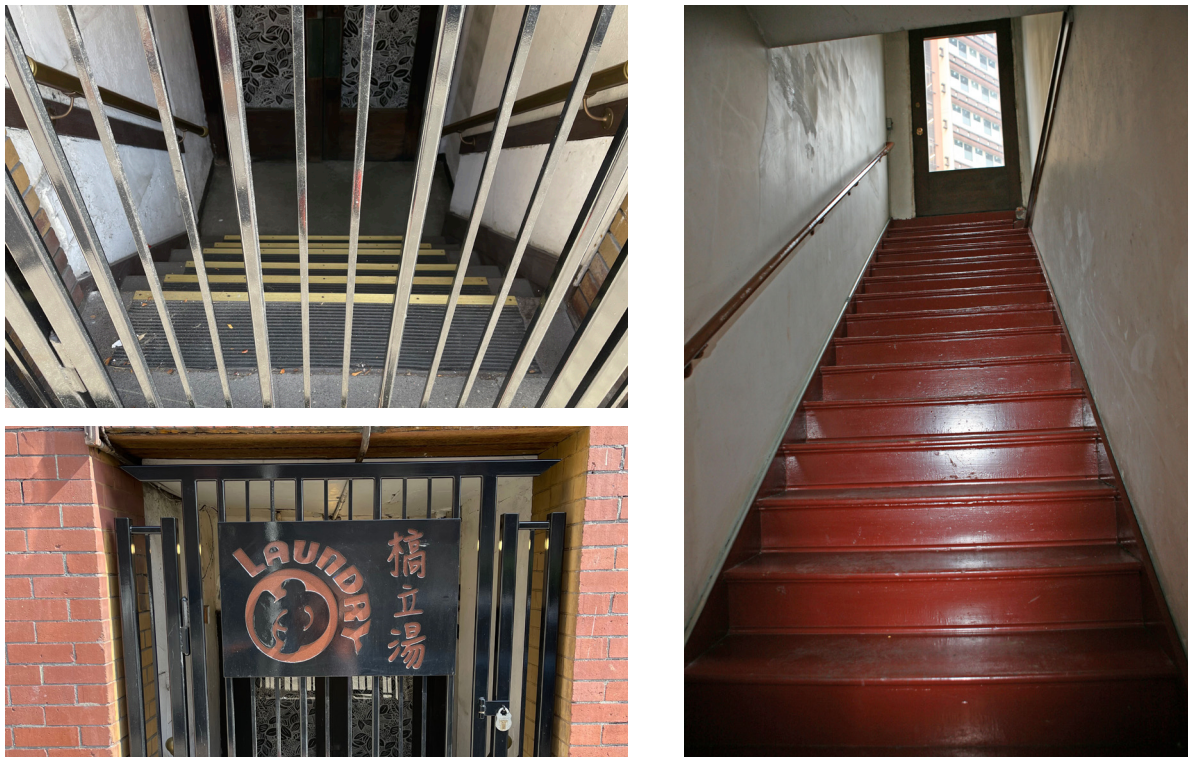


Figure 48. 302 Sixth Avenue S entrance stair and sign (left) and the 609-1/2 S Main entrance stair (right).

Images courtesy Eugenia Woo (left) and 2014 Panama Hotel HSR (right).



Figure 49. North entrance stairwell.

Image courtesy 2014 Panama Hotel HSR.



Figure 50. Southwest stairwell (left) and the stairwell at the 302-1/2 Sixth Avenue S entrance (right).

Images courtesy 2014 Panama Hotel HSR.



Figure 51. Upper floor (floors 3-5) corridors, typical conditions.

Images courtesy 2014 Panama Hotel HSR.



Figure 52. Second floor corridor (left) and upper floor corridor (right) typical conditions. Images courtesy 2014 Panama Hotel HSR.



Figure 53. Third floor reception room, looking south.
The doorway to the corridor and north stairway is at right. Image courtesy 2014 Panama Hotel HSR.

NORTHWEST VERNACULAR



Figure 54. Third floor reception area showing the reception window, looking south.
Image courtesy Artifacts Consulting, Inc, 2014.



Figure 55. Room 207, typical conditions.
Image courtesy 2014 Panama Hotel HSR.



Figure 56. Room 313, typical conditions.
Image courtesy 2014 Panama Hotel HSR.



Figure 57. Room 310.
Image courtesy 2014 Panama Hotel HSR.



Figure 58. Room 313, typical conditions.

Image courtesy 2014 Panama Hotel HSR.



Figure 59. Room 424, typical conditions.

Image courtesy 2014 Panama Hotel HSR.



Figure 60. Second floor former professional offices (room 203) used for hotel functions currently.

Image courtesy 2014 Panama Hotel HSR.



Figure 61. Bathroom 421 (left) and bathroom 523 (right) showing typical conditions.

Images courtesy 2014 Panama Hotel HSR.

Figure 62. Basement and baths.

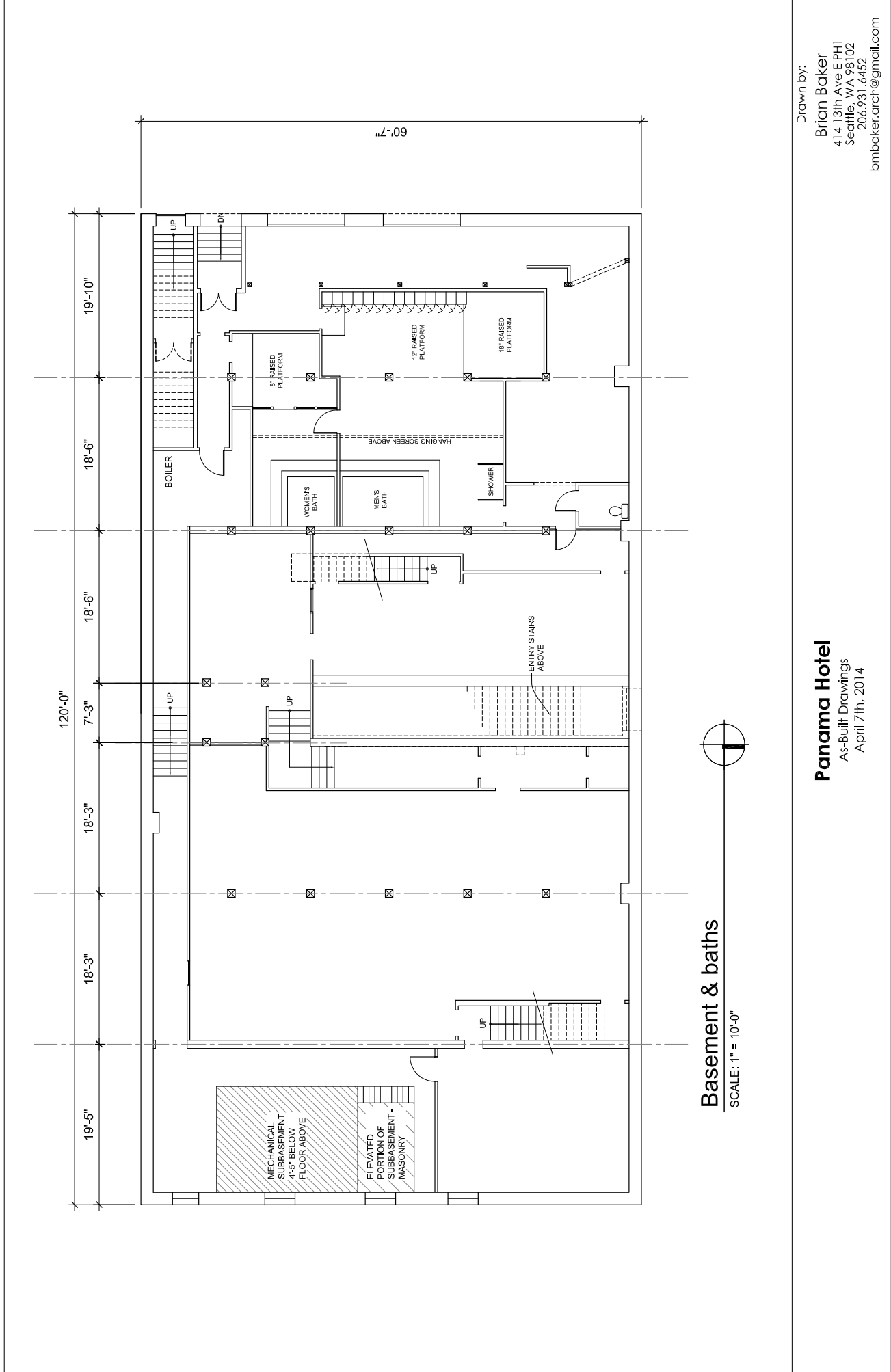


Figure 63. First floor.

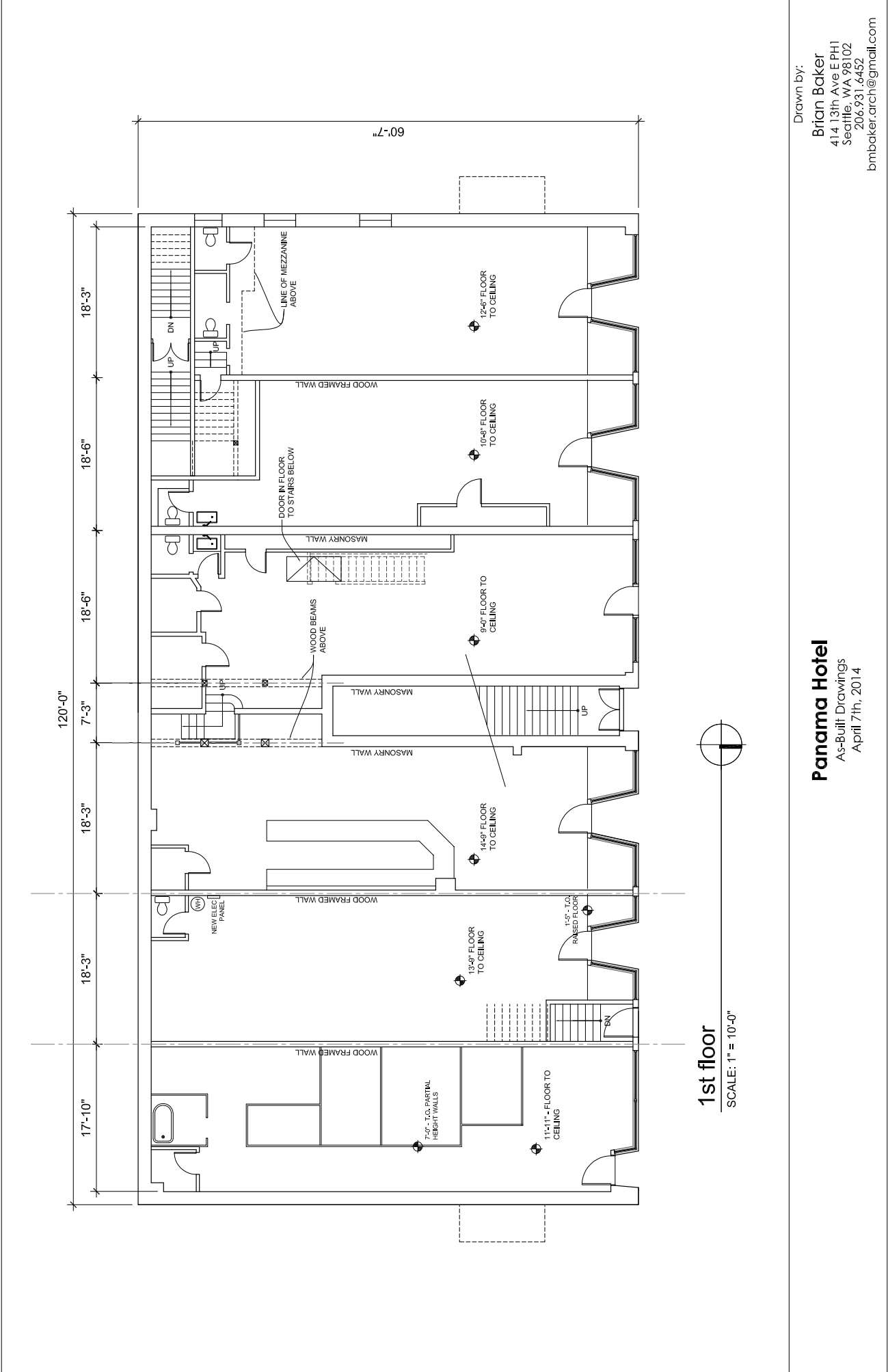


Figure 64. Second floor.

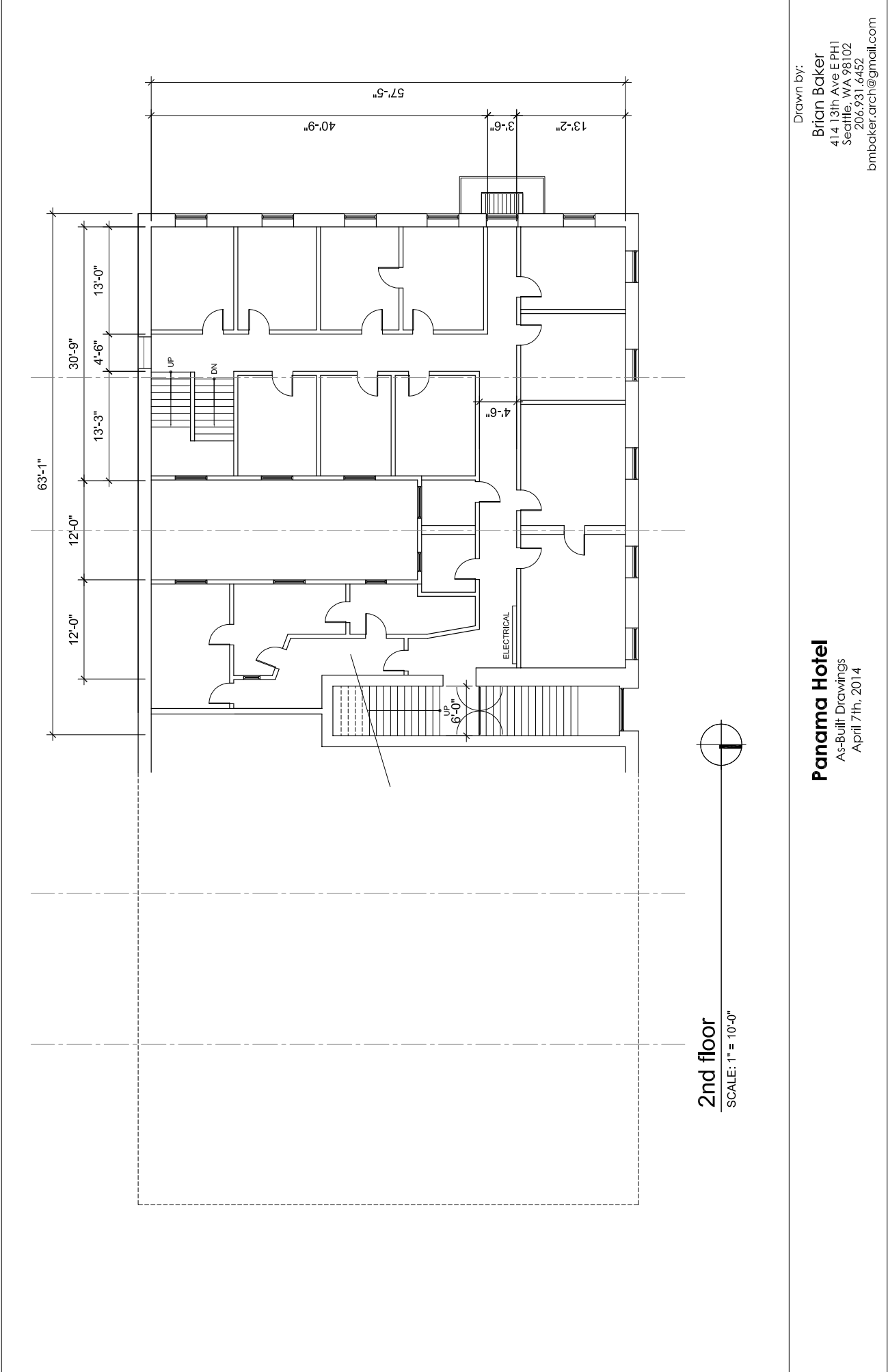


Figure 65. Third floor.

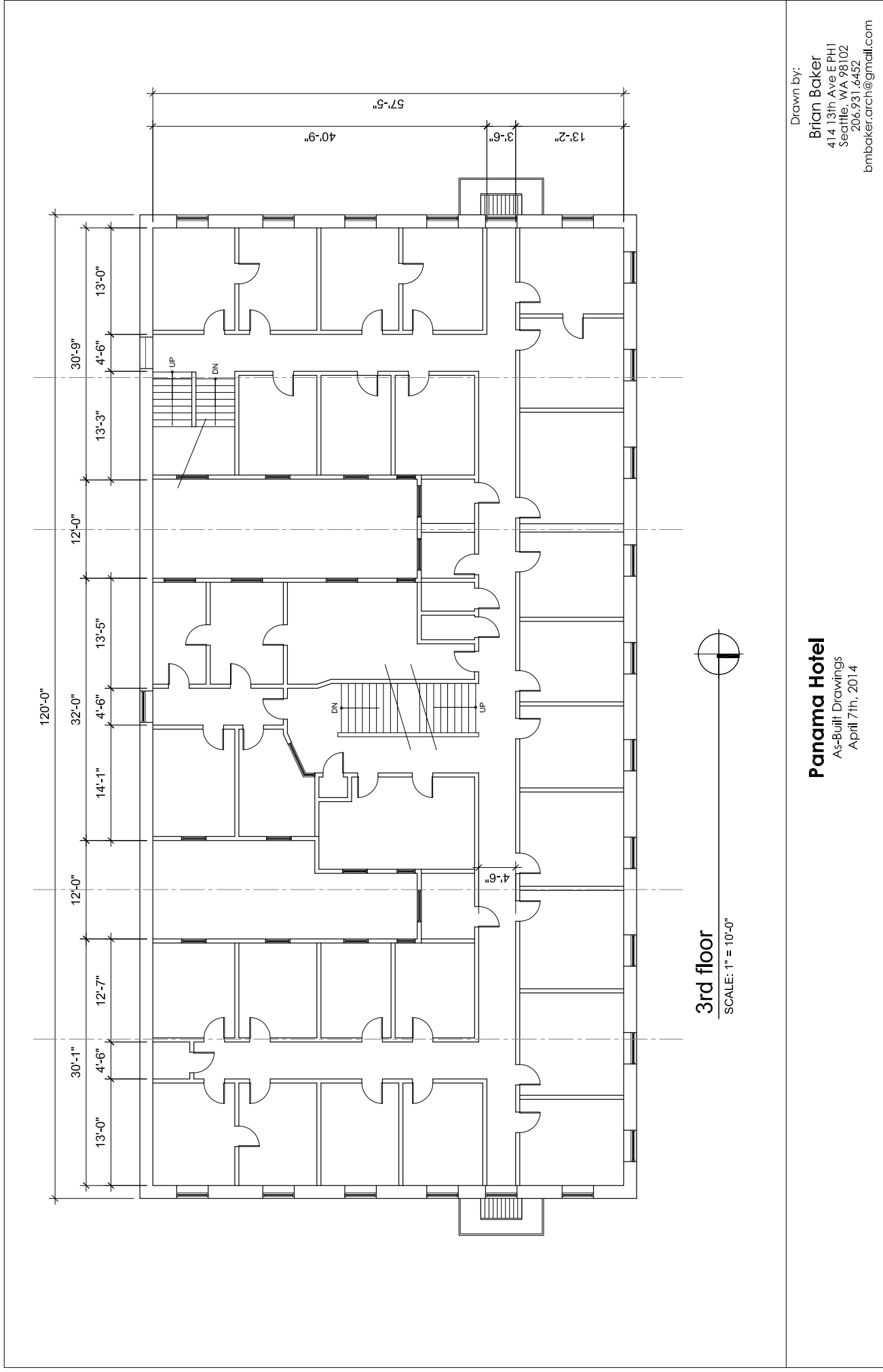


Figure 66. Fourth floor.

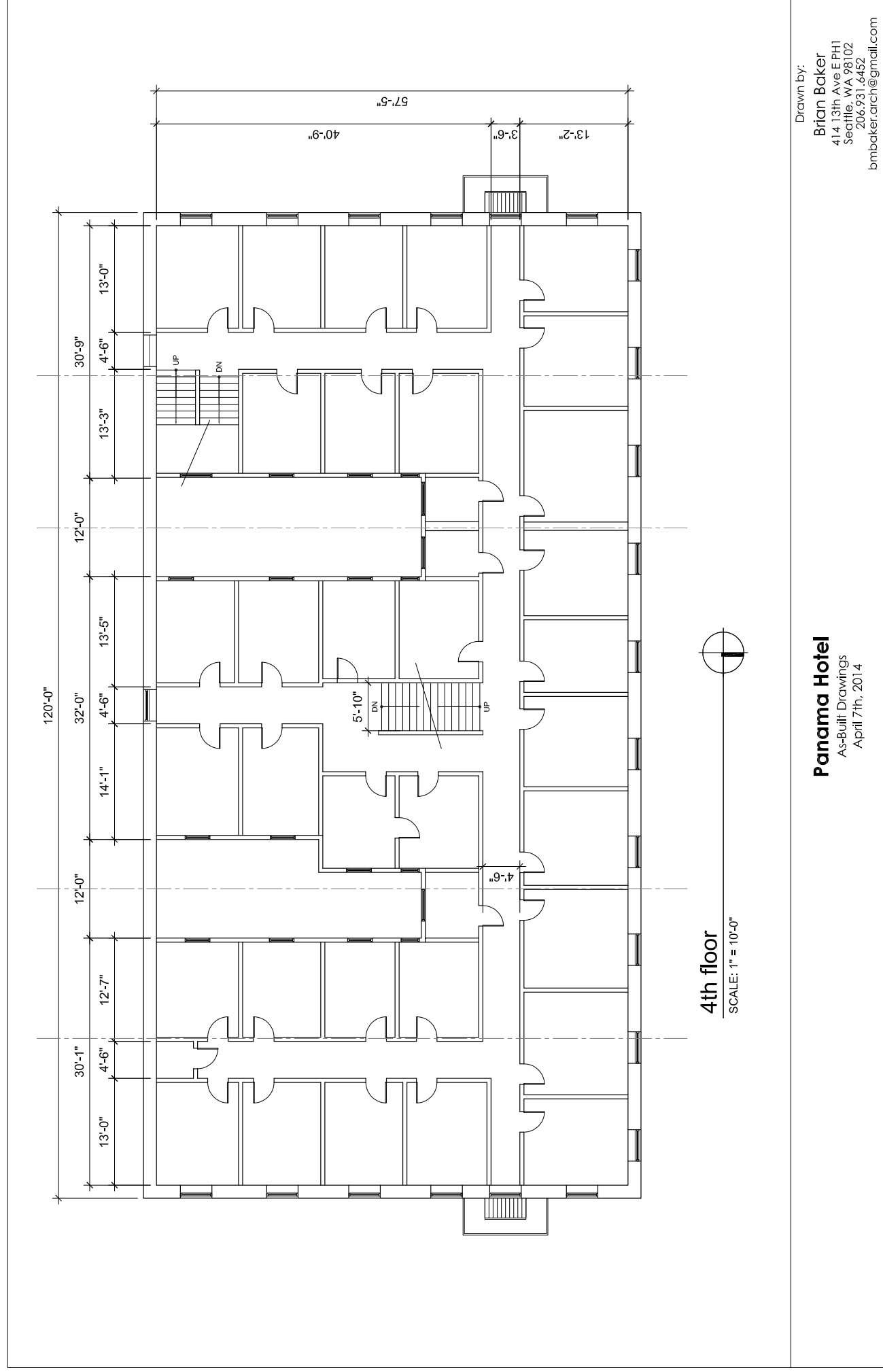


Figure 67. Fifth Floor.

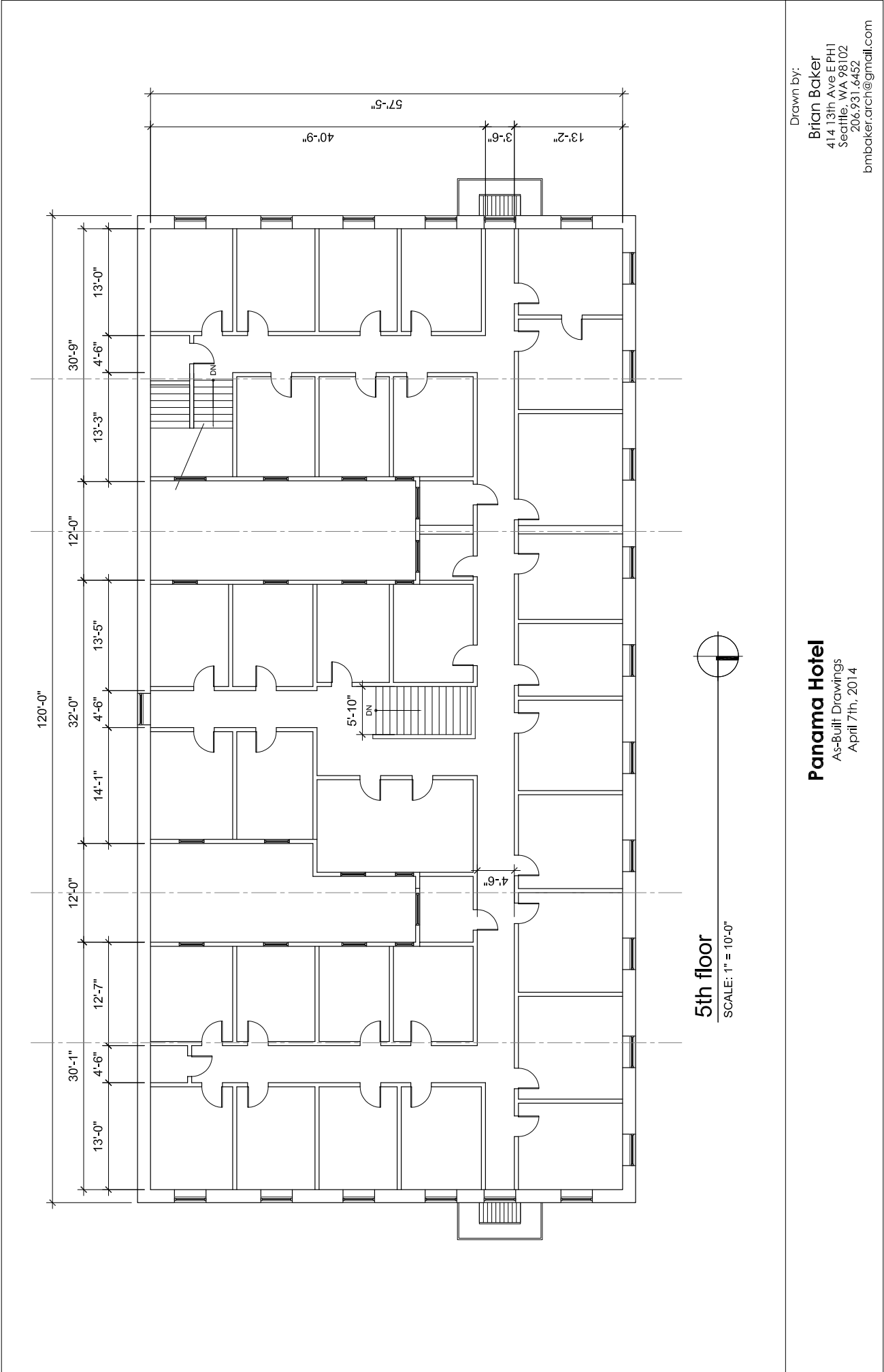


Figure 68. North elevation.



Figure 69. West elevation.

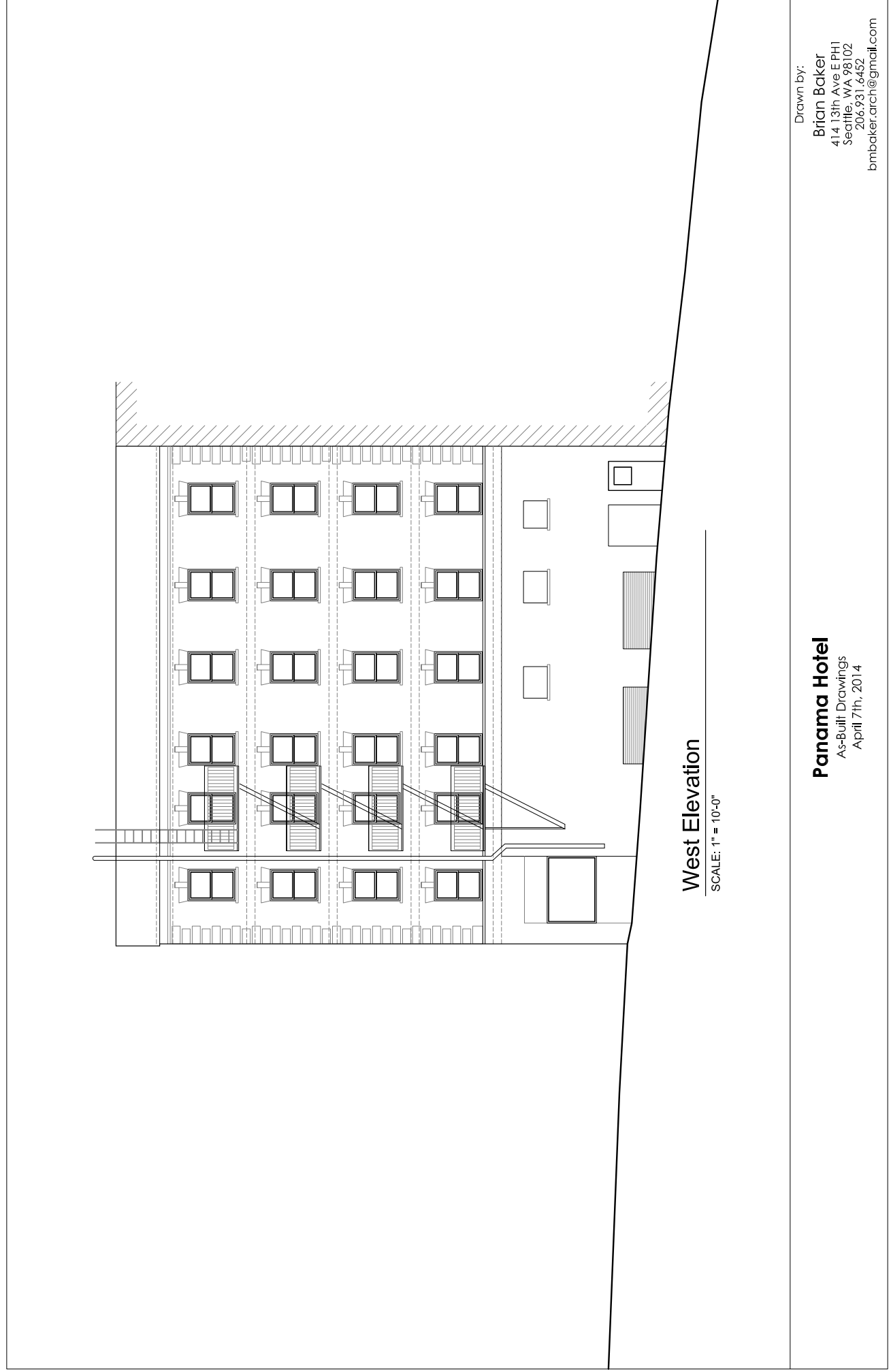


Figure 70. East elevation.

