



# Seattle Parks & Recreation

healthy people healthy environment strong communities

# OCCIDENTAL SQUARE WASTE BIN LOCATIONS





# SOUTH AT S MAIN ST





# EAST SIDE OF PAVILION





# EAST EDGE ALONG OCCIDENTAL AVE S



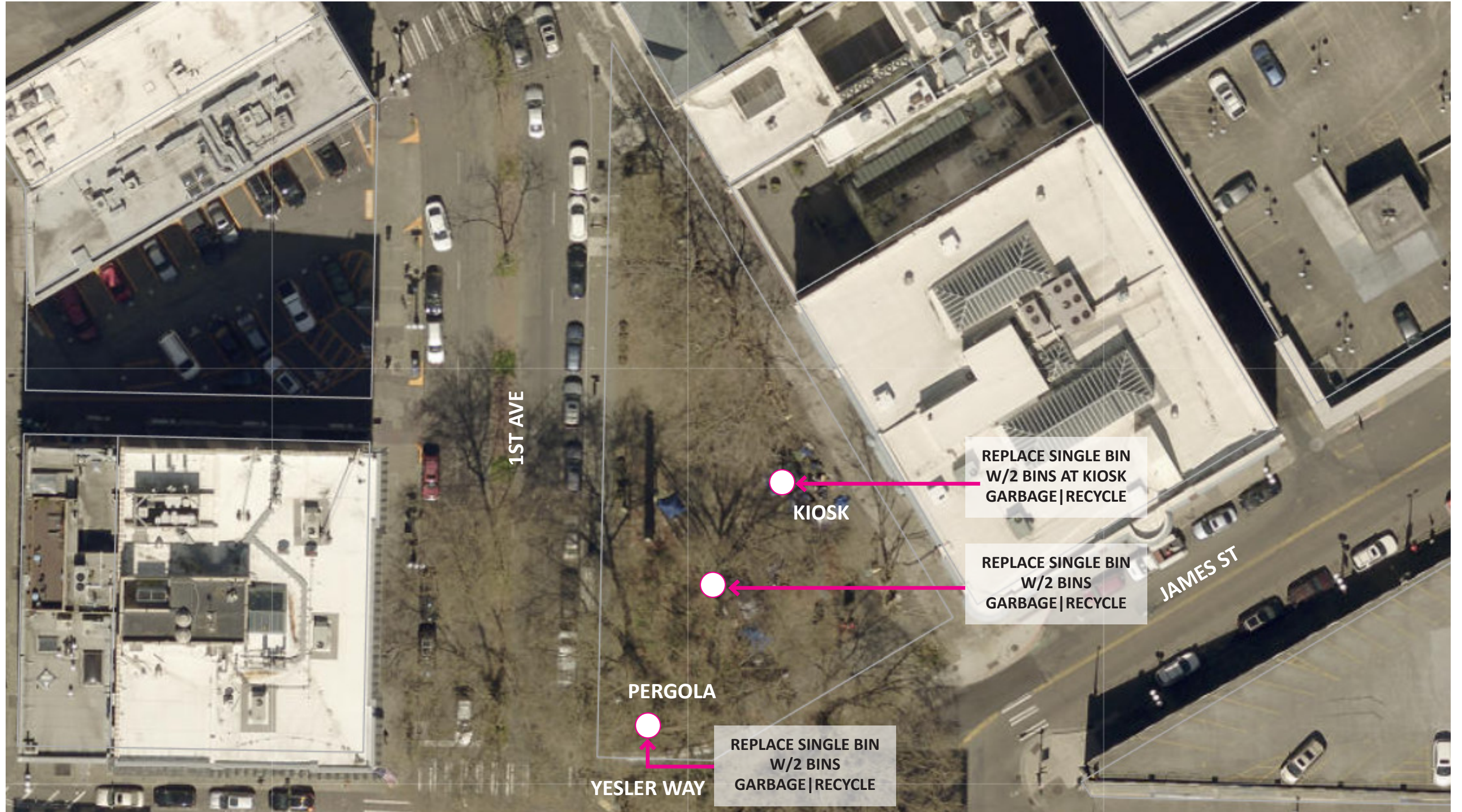


# NORTH AT S WASHINGTON ST





# PIONEER SQUARE WASTE BIN LOCATIONS





# SOUTH AT YESLER WAY



# AT INFORMATION KIOSK





# EAST SIDE OF PARK AT BENCHES

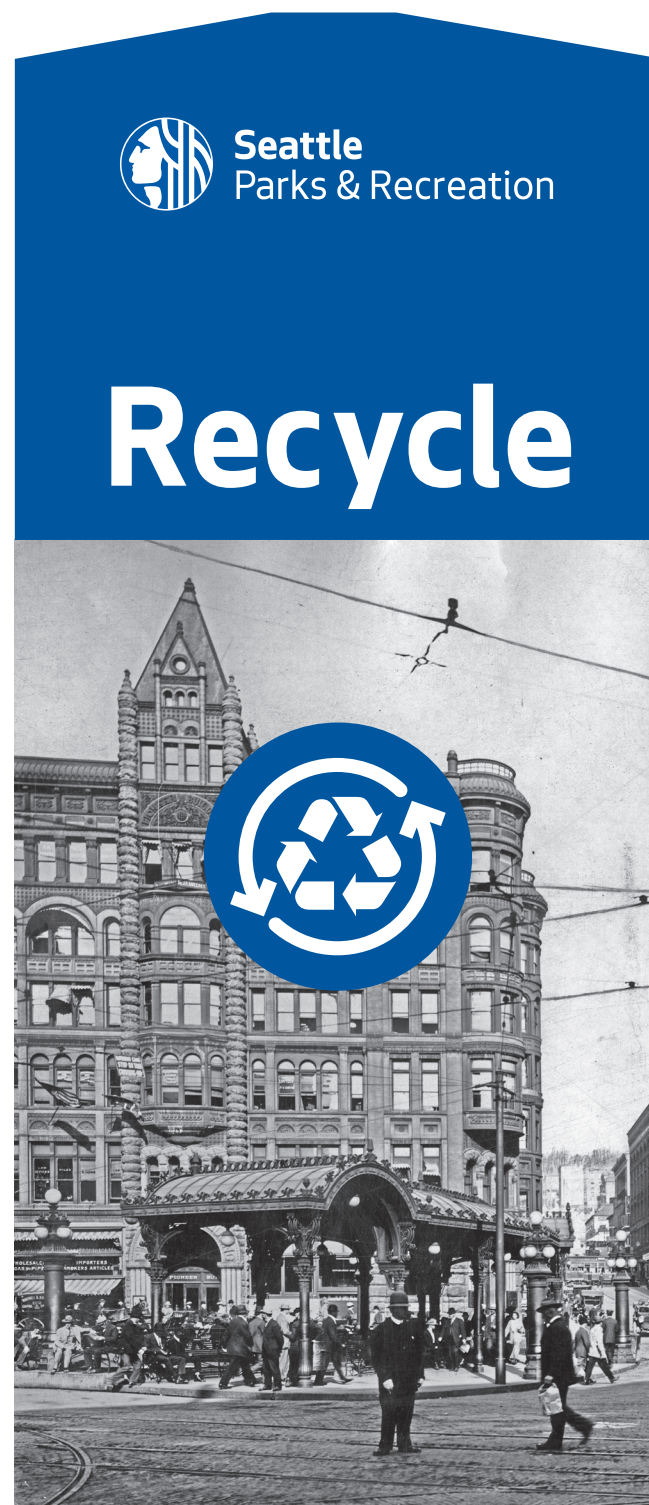




**FRONT  
AND BACK**



**LEFT AND  
RIGHT SIDES**



**TOP**



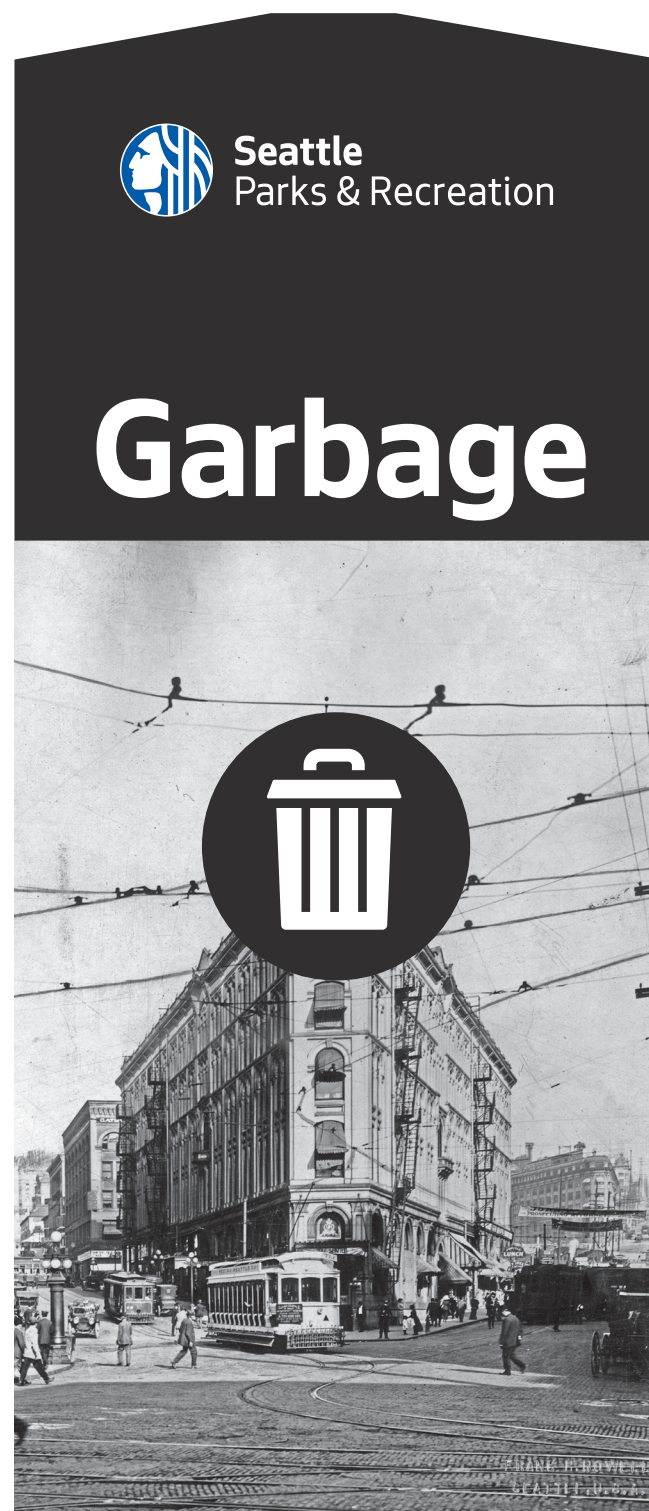
**PIONEER SQUARE**



**FRONT  
AND BACK**



**LEFT AND  
RIGHT SIDES**



**TOP**



**PIONEER SQUARE**



# LEFT SIDE



# FRONT



# RIGHT SIDE



# BACK



# TOP



# PIONEER SQUARE





**Seattle  
Public  
Utilities**



# 2022 Public Litter Can Pilot: SPU's Search for a More Perfect Public Litter Can

**PROJECT DESCRIPTION:** SPU manages 1,150 public litter and recycling cans across Seattle. In December 2021, we introduced a new public litter can style to improve functionality and service. Through this pilot, 150 existing cans will be replaced in neighborhoods with an extended history of public litter can issues, including Capitol Hill, South Park, Georgetown, Othello, Alki, Delridge, and Little Saigon.

**INTRODUCING THE CG35:** The new can style, CG35, is manufactured by SECURR, the city's blanket contract vendor for public litter can. The CG35 is a cart garage with a spring-locked side opening and houses a 35-gallon poly cart (like our residential garbage cans). Our partners at KC Metro have used this style for the past 3 years and has said this can model "is the closest they have found to perfect for their can program."



Opening is 6" x 14";  
Spring latch lock side opening



## 2021 Recycle Design



Image by Ben D, a youth photographer with Youth In Focus

## 2021 Garbage Design



Image by Brenda P, a youth photographer with Youth In Focus

## ISSUES WE ARE SOLVING FOR:

Current Can Styles	Pros & Cons
	<p><b>SECURR HS55</b>  <b>Pros:</b> Locked side door; very few missing liners; keeps rain out  <b>Cons:</b> Prone to severe graffiti difficult to remove in the field; perforated sides are frequently kicked in; inside liners are 55 gallons and above weight for drivers to safely collect</p>
	<p><b>CANTERBURY</b>  <b>Pros:</b> Side door opening, fewer liners stolen, keeps the rain out  <b>Cons:</b> Weaker materials used in construction; damaged often &amp; difficult to repair; prone to graffiti on lid</p>
	<p><b>VICTOR STANLEY/THOMAS STEELE</b>  <b>Pros:</b> Sturdy; cleans up well; works better in some areas than others  <b>Cons:</b> Frequent illegal dumping; allows for collection of rain, making trash heavier to collect; lid &amp; liner often go missing; frequent missing liners disrupt service; drivers must lift liner up out of can to service</p>

All of SPU's existing public litter can styles experience graffiti and require the contractor to lift the cans manually into the truck. This new style will allow drivers to use the lift on the truck to service the can. Though it is difficult to prevent graffiti, we anticipate the vinyl wrap will do more to 1) discourage graffiti and 2) make it easier to remove.

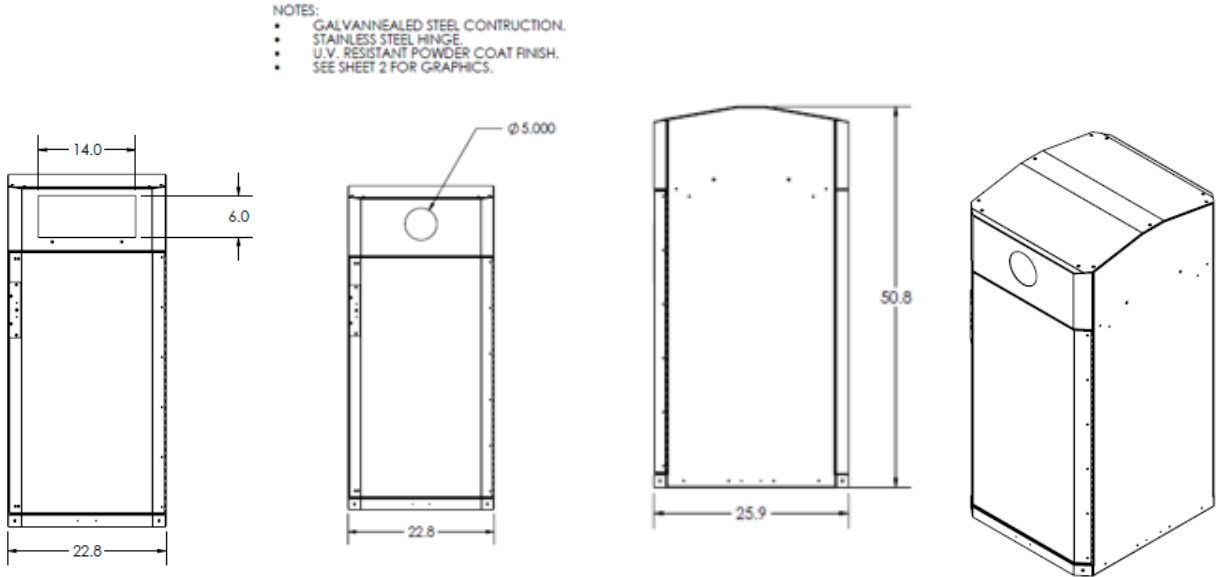
**NEXT STEPS:** We observe functionality of the new cans in the new year. If pleased with performance, will order more cans to place in denser, urban neighborhoods within Seattle, including the downtown area.



# Changing Existing SPU Public Litter and Recycling Can Models in Pioneer Square

## Project Overview

In 2022, the City of Seattle’s Public Place Litter and Recycling Program (PPLR), managed by Seattle Public Utilities (SPU), piloted a new public litter can style in various parts of the City, including Pike/Pine and Capitol Hill. The new cans are made of durable steel and are designed to limit graffiti, physical deterioration, and trash overflow through their design (see below).



Throughout the pilot, SPU has been pleased with the improved functionality of this new can-style and are ready to deploy them to other Seattle neighborhoods. In Pioneer Square, this new can-style will replace 60 older-style cans in the neighborhood and a custom graphic will be designed to meet the Historic District design standards.

The purpose of upgrading SPU’s older style cans is to reduce litter in the public right-of-way (ROW) and create accessible options for the public to dispose of on-the-go trash. Pioneer Square was selected as a high need area for can upgrades based on the prevalence of can damage in the neighborhood. The current style can in place is being phased out of the PPLR Program due to problems with damage, theft of components such as liners and lids, and litter overflow.





**FRONT AND BACK**

**LEFT AND RIGHT SIDES**

**TOP**

**FRONT AND BACK**

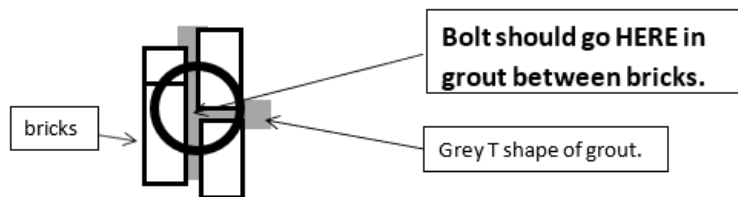
**LEFT AND RIGHT SIDES**

**TOP**



### Installation Process Details

The can installation process includes removing existing bolt from SPU litter and recycling can located in the ROW and removing each can from the site. When each can is removed, any litter is cleaned and the area is power washed. New cans are then placed exactly at the location of the old can. The bolt is then placed in the hole previously drilled into the ROW. Where brick is involved, SPU contractors from FleetGenius, will ensure that the bolt is only being attached to the grout between bricks rather than the brick itself.



Once the cans are successfully replaced, they will be serviced daily by drivers. The previous can model had three parts including the outer steel liner, the inner hard plastic liner, and the lid. Our contractors service older cans by lifting the hard-plastic liner full of materials over the outer steel liner and emptying the materials into their truck.



The new can model is only comprised of two parts, the steel body of the can and the hard-plastic liner. The new style has a lid that is welded onto the body of the can to prevent lid and liner theft as well as to prevent precipitation from accumulating in the liner. It also has a swing door that is opened from the side and locked with a spring latch which makes it much easier for contractors to service the can. The drivers will service the can by opening the swing door, removing the hard-plastic liner from the side of the can, and then emptying the refuse into their vehicles. The swing door is automatically locked when it is shut which will deter theft and can damage as a result. If a can needs to be removed in the future, SPU will ensure that appropriate action will be taken so that the concrete or brick ROW is restored to its original condition.

**Pioneer Square Public Litter Can Addresses**

**Along First Ave S**

- 601 1ST AVE
- 102 1ST AVE S
- 121 1ST AVE S
- 200 1ST AVE S
- 201 1ST AVE S
- 220 1ST AVE S
- 221 1ST AVE S
- 300 1ST AVE S
- 322 1ST AVE S
- 323 1ST AVE S
- 500 1ST AVE S

- 323 OCCIDENTAL AVE S
- 400 OCCIDENTAL AVE S
- 401 OCCIDENTAL AVE S
- 520 OCCIDENTAL AVE S

**Along 2<sup>nd</sup> Ave S**

- 423 2ND AVE EXT S
- 407 2ND AVE EXT S
- 406 2ND AVE EXT S
- 339 2ND AVE EXT S
- 222 2ND AVE EXT S
- 316 S JACKSON ST
- 303 S JACKSON ST

**Along Occidental Ave S**

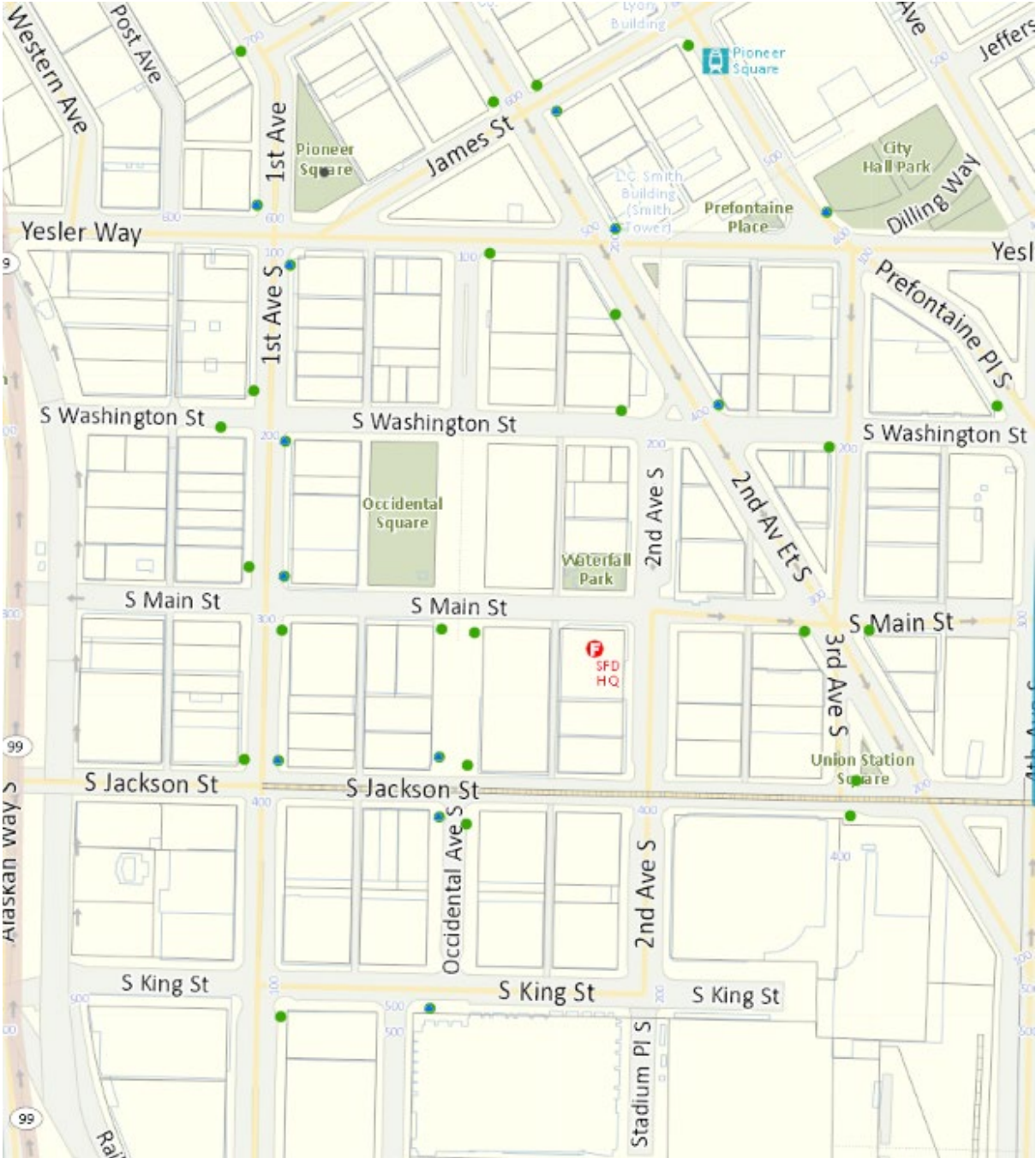
- 102 OCCIDENTAL AVE
- 300 OCCIDENTAL AVE S
- 303 OCCIDENTAL AVE S
- 322 OCCIDENTAL AVE S

**Other Locations**

- 205 3RD AVE S
- 450 3RD AVE
- 312 S WASHINGTON ST

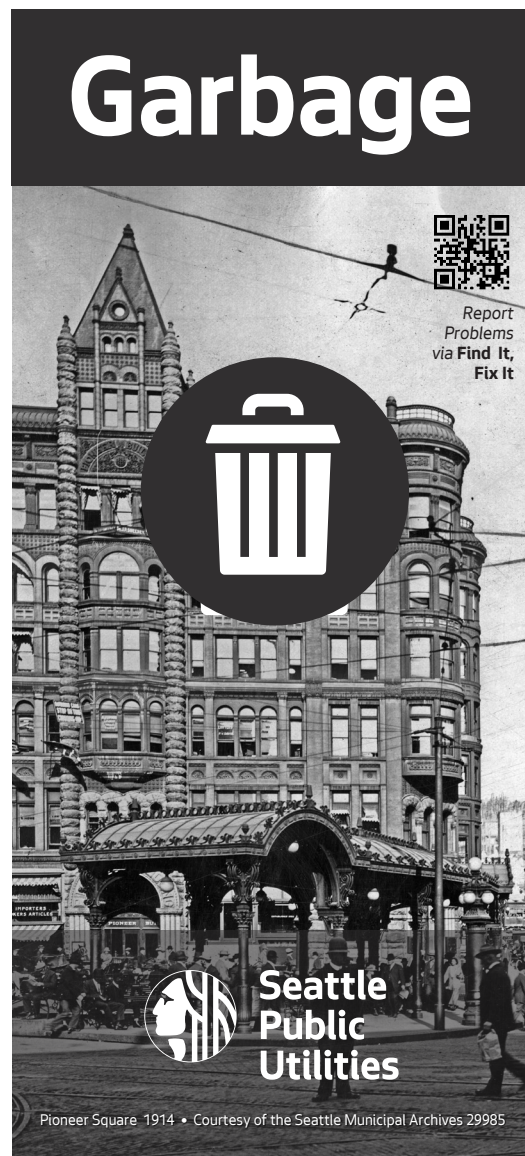


Pioneer Square Public Litter Can Map

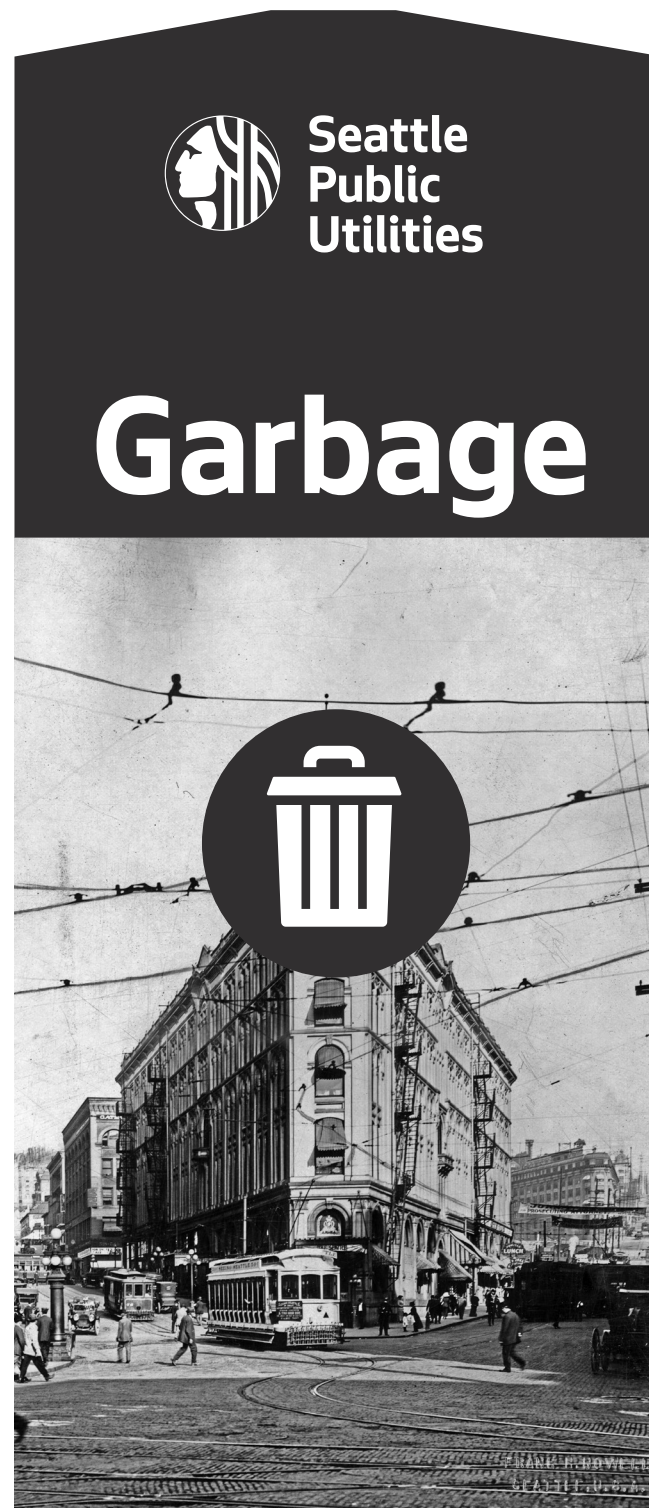




# FRONT AND BACK



# LEFT AND RIGHT SIDES



# TOP



# PIONEER SQUARE



**FRONT  
AND BACK**



**LEFT AND  
RIGHT SIDES**



**TOP**



**PIONEER SQUARE**

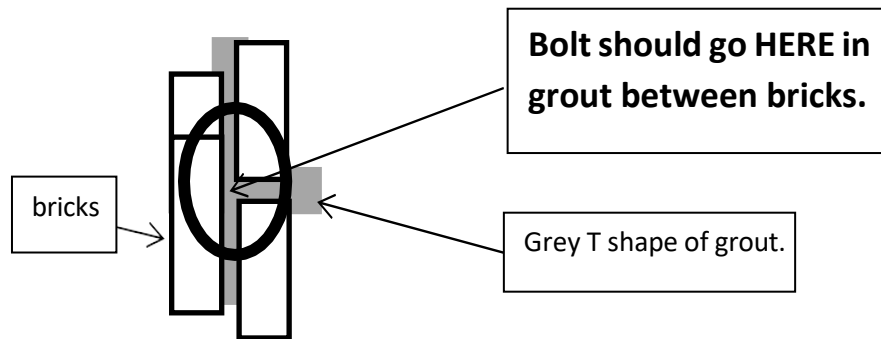


## SPU & SPR | Public Place Litter & Recycling Can Program

### Pioneer Square Can Bolting Instructions

#### SPU Bolting Process

1. Clean all cans and areas underneath the cans.
2. Make sure all cans have the correct decals. Top graphics should be able to read from the sidewalk access point to litter can opening.
3. Place the can in the previous can location and ensure that it doesn't hang over the curb or touch any structures, including the other can.
4. Put the bolt through the center of the can's bottom metal strip. Then remove the bolt.
5. Align the hole in the can over the hole already present in the grout. This will increase your accuracy and decrease the chance of damaging the bricks. Once the can and the grout are aligned, bolt the can into the grout. **Do not bolt the can into brick.**



#### SPR Bolting Process

1. Clean all cans and areas underneath the cans.
2. Place the can in the previous can location and ensure that it doesn't hang over the curb or touch any structures, including the other can.
3. Bolt the cans together, *not to the ground*.