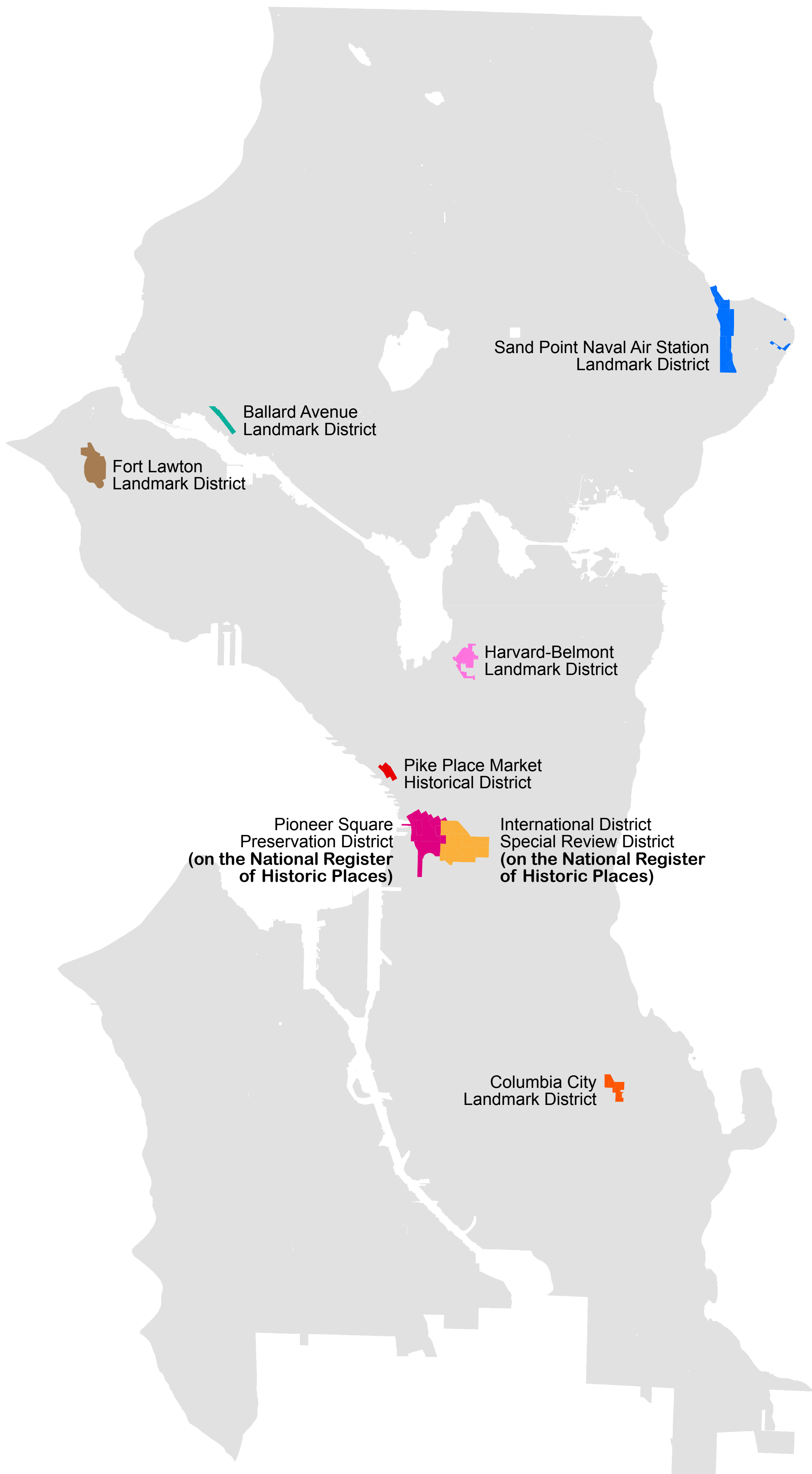


# Historic Areas

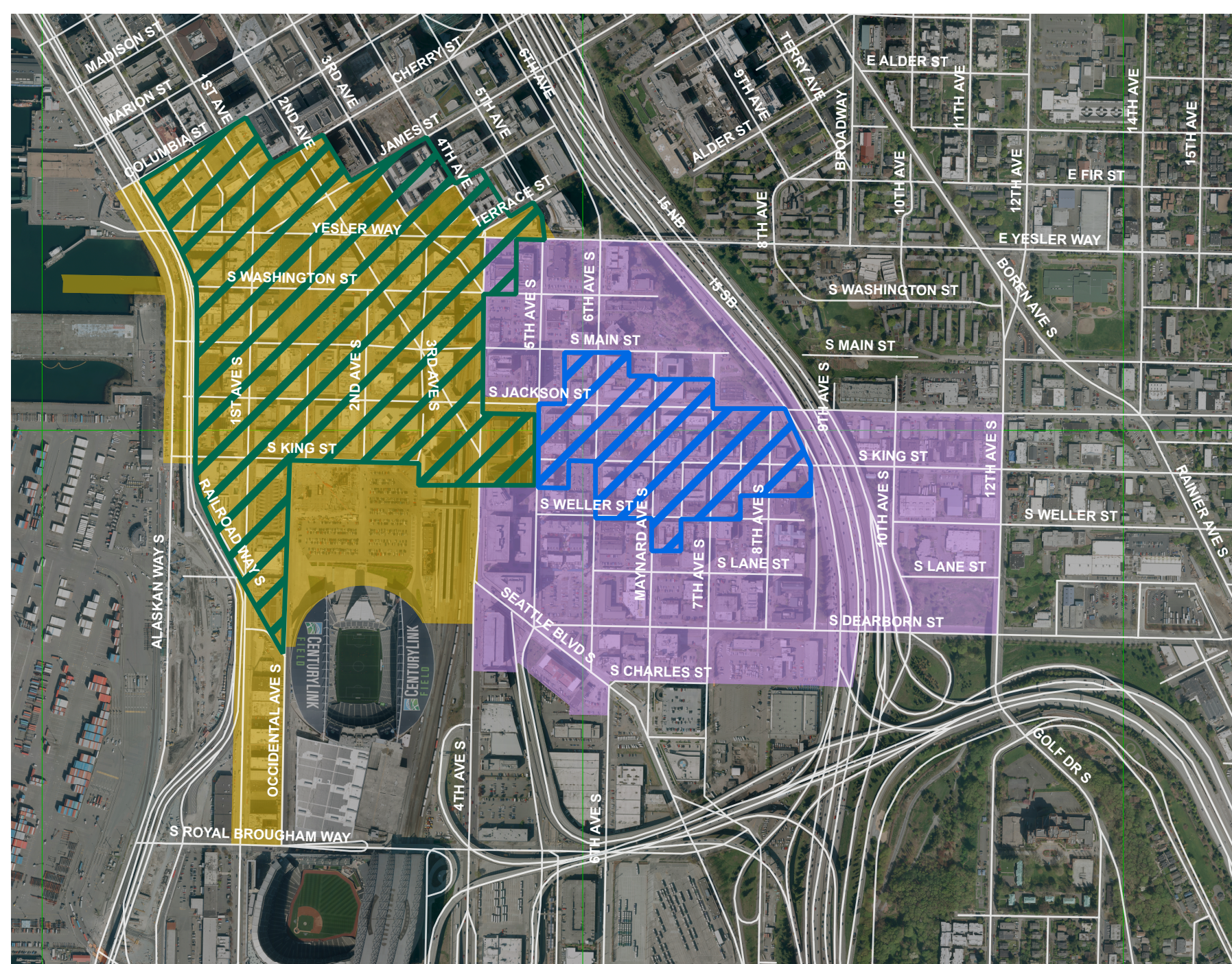


HOUSING AFFORDABILITY  
AND LIVABILITY AGENDA

## Q: What are examples of historic and culturally significant areas?



Seattle has eight historic districts. The appearance and historical integrity of structures and public spaces within each district are regulated by a citizens board and/or the Landmarks Preservation Board following processes and criteria set out in a City ordinance.



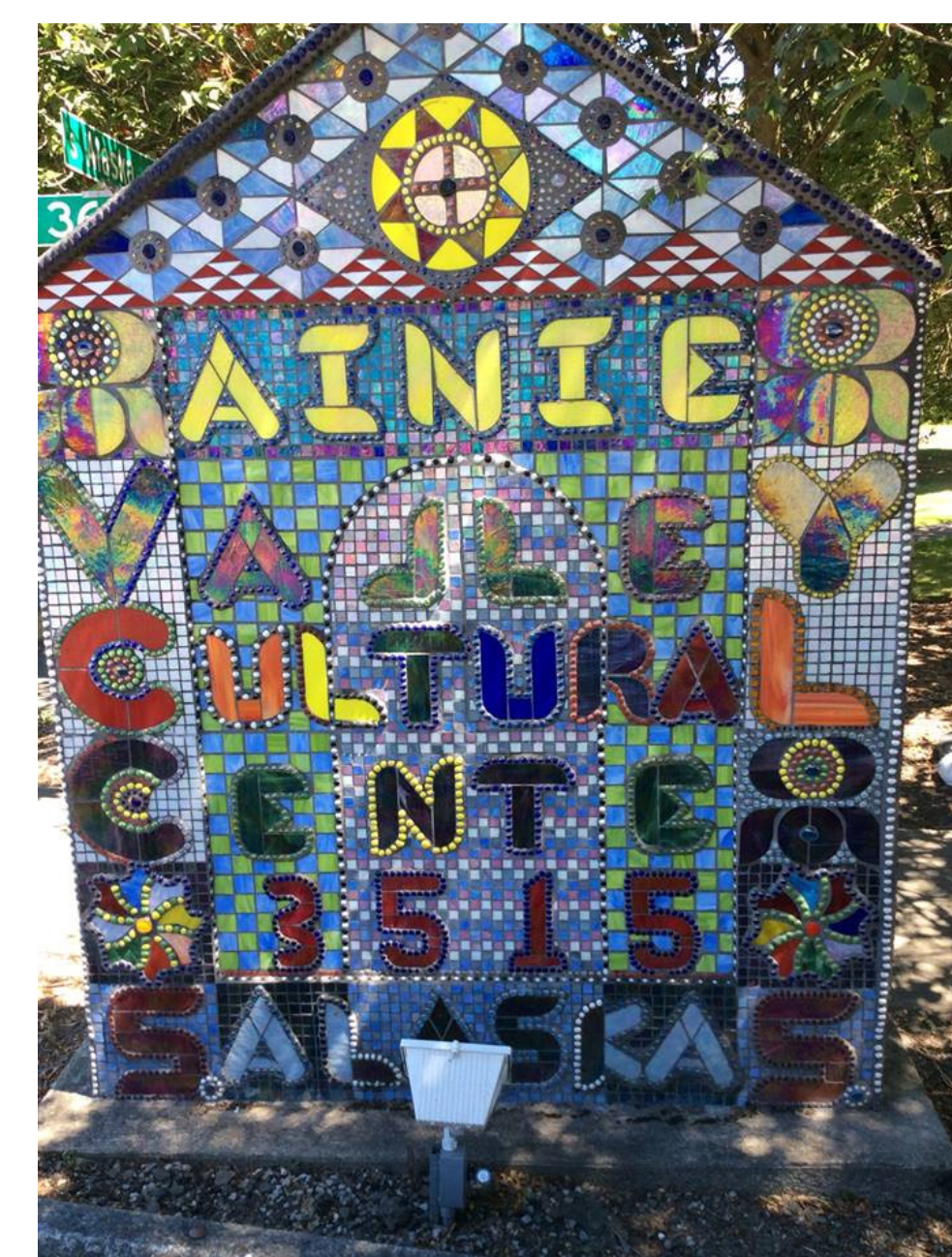
**HISTORIC DISTRICTS IN SOUTH DOWNTOWN**

**CITY OF SEATTLE HISTORIC DISTRICTS**

- Pioneer Square Preservation District
- International Special Review District

**NATIONAL REGISTER OF HISTORIC PLACES**

- Pioneer Square-Skid Road National Historic District
- Seattle Chinatown Historic District



Other areas of historical and cultural significance are not designated as historic preservation areas.

