

Joint Enforcement Team (JET)

HELPING CREATE A SAFE AND POSITIVE NIGHTLIFE
EXPERIENCE FOR THE ENTIRE COMMUNITY



Who is JET?

Seattle Police Department (SPD)

Seattle Fire Department (SFD)

Washington State Liquor and Cannabis Board
(LCB)

Seattle Department of Transportation (SDOT)

Seattle Facilities and Administrative Services
(FAS)



JET Racial Equity Toolkit (RET)

Background

JET RET Webpage

In 2018, received feedback from BIPOC nightlife community about the numerous inspections

The Joint Enforcement Team (JET) Racial Equity Toolkit (RET) was formed

The RET is a process and set of questions to evaluate policies and programs to address the impacts on racial equity



JET Racial Equity Toolkit (RET)

Outcomes

- Diminish any inequitable impacts JET has on businesses that are owned, operated, and frequented by people of color. Ensuring our enforcement is not disproportionately focused on persons or business of color.
- Businesses owned, operated, and frequented by people of color benefit from the JET visit to develop a sustainable business where their patrons have a positive, safe experience.
- The JET team is reflective of the communities we serve.



JET Racial Equity Toolkit (RET)

Survey Results

Two stakeholder surveys sent to nightlife businesses including businesses owned, operated, and/or frequented by the BIPOC Community.

Received over 40 responses

- 70% of heard of JET
- 60% had been visited by JET

Perception of JET is viewed as neutral to poor

Interactions with JET are viewed as positive

- Good Report
- Communication Issues
- Disruptive
- Threatening





What are JET's goals?



To create a safe and positive experience for people to enjoy Seattle nightlife businesses and activities, now and in the future.



To be a positive resource for businesses serving the nightlife industry.



What does JET do?

Inspect nightclubs, bars, restaurants, and other businesses (i.e., adult entertainment, massage parlors, mobile food vendors, special events) at peak times to:

1. Check for compliance with regulatory and license codes
2. Share information with and answer questions from business owners and nightlife staff



JET Agendas and Agency Reps

JET Inspection dates determined quarterly

Week of scheduled JET outing prep by each agency

- Names of each agency representative(s)
- List of businesses with address for inspection
- Reason for inspection

Consolidation of agenda by FAS

Agenda provided to each agency representative

JET Inspection Day Overview

Team introduction and safety briefing:

- Awareness of known threats
- Detailed safety brief

Agenda review and comments from lead agency:

- Lead agency determines footprint during inspection

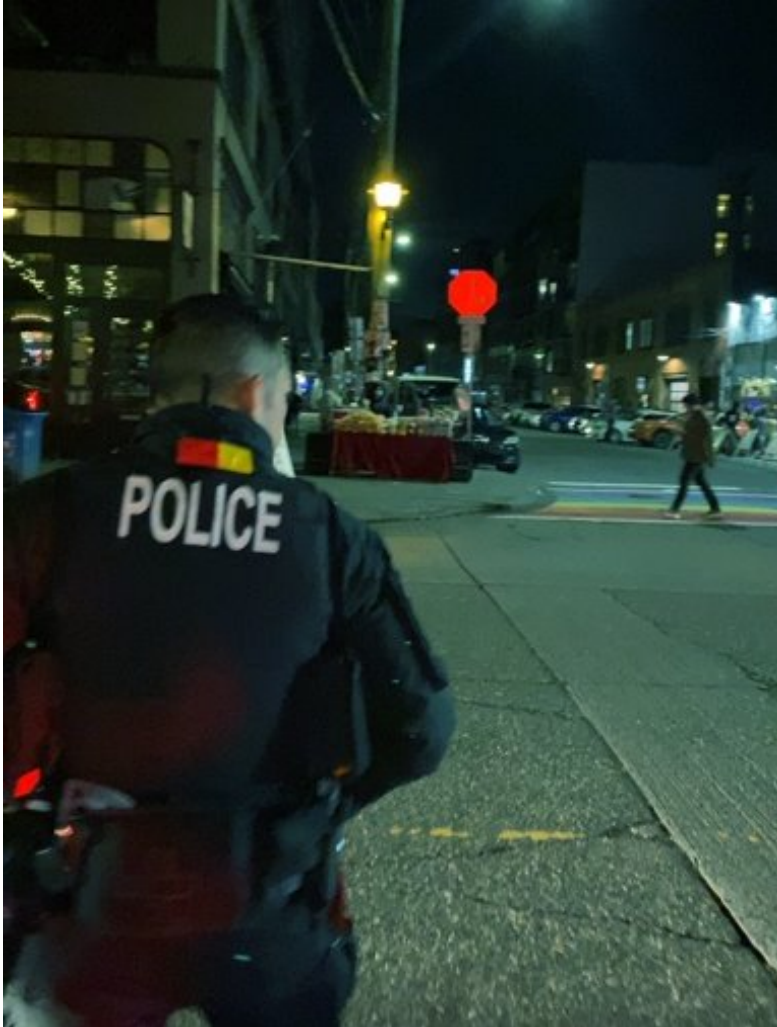
Order of travel

Inspections:

- Introduction with business owner/manager
- Discussion of noted violations or positive improvements
- All JET activities are documented in the Nightlife Application

End of night debrief





JET - SPD Role

Provides training for nightlife security teams to create a safe environment for patrons (outside of JET outings)

Works with nightlife venues with known public safety concerns

Builds relationships with business and community to encourage open lines of communication

Ensures the safety of JET participants

- Safety briefings
- Provides security for participants throughout outing



JET - SFD Role

Seattle Fire Marshall is responsible for ensuring the venue follows proper fire safety practices in accordance with Seattle Fire Code.

Inspection Areas of Concern:

- Fire and Life Safety Systems
- Occupancy Load
- Egress
- Location Access
- Communication
- Hazards

Enforcement – Citation (fine) for immediate life safety issues and Notice of Violations leading to Order to Comply (fine)

JET - LCB Role

Promote public safety through fair supervision and enforcement of all liquor, tobacco, vape and marijuana laws.

Inspection areas of concern:

- Observe for signs of intoxication
- Assess level of compliance with LIQ laws
- Educate licensees, managers, and the staff on duty

Focus of inspection is public safety:

- Sale or service to apparently intoxicated
- Youth access to alcohol
- Criminal misconduct

WAC 314-29-020 - Group 1 Violations Against Public Safety



JET - SDOT Role

Responds to violations and concerns impacting mobility occurring in the public right-of-way

- streets and sidewalks

Street and sidewalk vending

- food trucks in the curb space and carts on the sidewalk

Stanchions, portable signs, and queueing



Ensure compliance of Seattle Municipal Code Titles 5 & 6, Tax and Licensing requirements, data consolidation and reporting of JET outings.

JET - FAS Role

Licensing	Taxes	Regulatory
<ul style="list-style-type: none">• City of Seattle Business License• Amusement Devices	<ul style="list-style-type: none">• City of Seattle Business and Occupation Tax• Admissions Tax• Gambling Tax	<ul style="list-style-type: none">• Regulating Amplified Nightlife Noise• Coordinate Nightlife Safety Plans



Questions

This PowerPoint presentation is also available on our JET web page
[Joint Enforcement Team - Business Regulations | seattle.gov](#)

