

South Park Plaza

Seattle Design Commission
November 18, 2021

Team

Seattle Parks & Recreation
Community Outreach

Third Day Design

Karen Kiest Landscape Architects

Tilghman Group, Transportation Planning

Jay Rood

Karen O'Connor
Ed Pottharst

Andrew Epstein

Karen Kiest
Meredith Hall

Ross Tilghman



Seattle
Parks & Recreation

Land & Cultural Acknowledgement

City of Seattle Parks Department and the South Park Plaza design team acknowledge that we are on the traditional land of the first people of Seattle, the Duwamish People past and present and honor with gratitude the land itself and the Duwamish Tribe.

The South Park Plaza sits over an old meander/oxbow of the Duwamish River, filled in with the black sands of the river, and near occupied sites of the Duwamish people for thousands of years.

We recognize that this park will provide a special gateway/portal to the Duwamish River; provide a record and message of this history; present commitment to environmental health; and be a platform for launching future initiatives.

Project

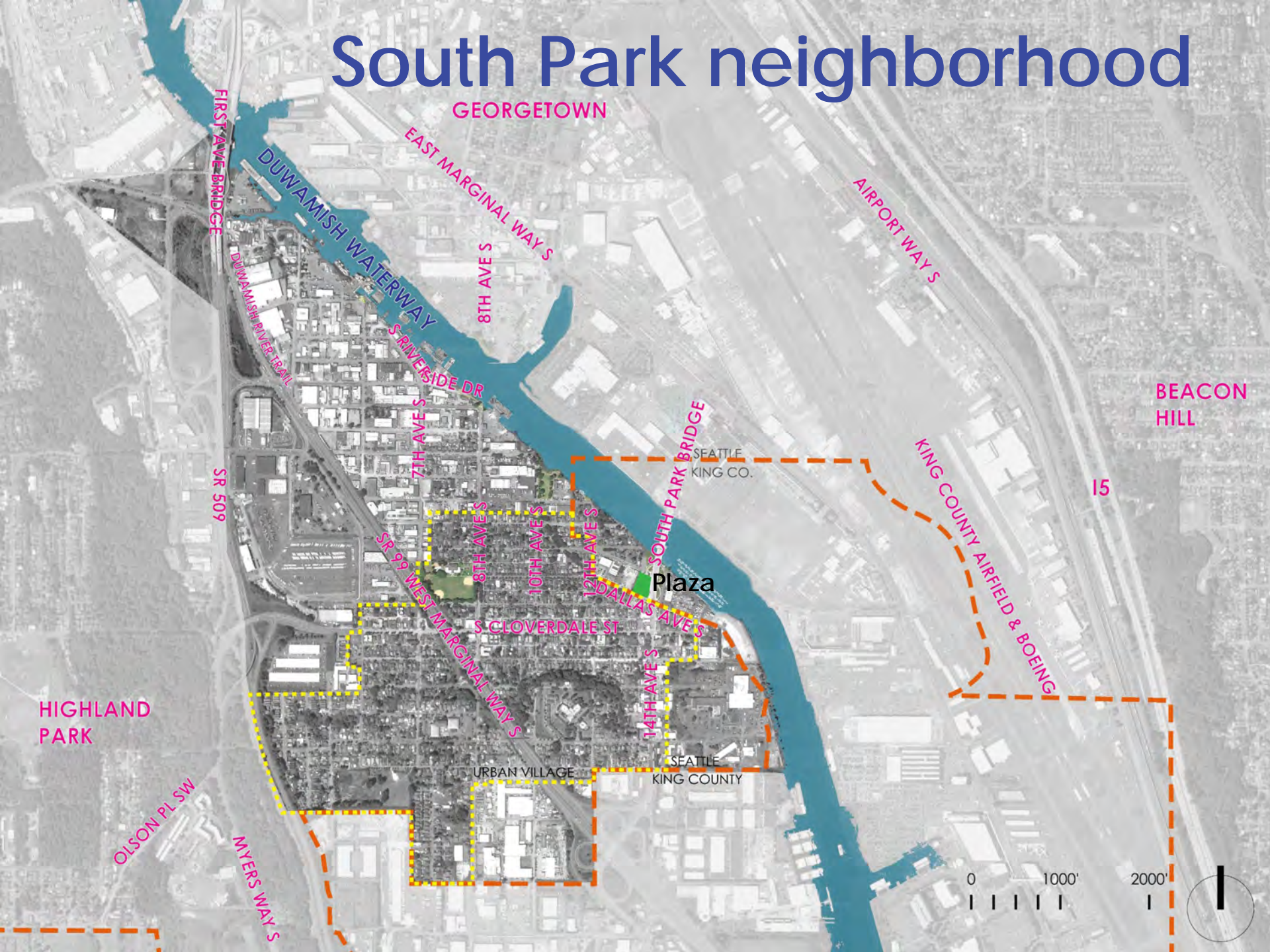
- This is one of 14 landbanked sites acquired to provide additional access to open space in identified gaps throughout the city.
- The design will serve as an urban plaza, connection to King County improvements and will reference the South Park Green Space Vision Plan.
- Parks has negotiated a 27% limit on impervious surfaces within the property lines (the fund normally limits to 15%; the extra is taken from the parcel to the north). Pathways and surfaces under canopy of trees are excepted.

Program

- There is no fixed program; program is being developed through site opportunities and constraints, and community input



South Park neighborhood



GEORGETOWN

BEACON HILL

HIGHLAND PARK

URBAN VILLAGE

SEATTLE KING COUNTY

Plaza

SEATTLE KING CO.

15



FIRST AVE BRIDGE

DUWAMISH WATERWAY

EAST MARGINAL WAY S

AIRPORT WAY S

DUWAMISH RIVER TRAIL

SP RIVERSIDE DR

8TH AVE S

SR 509

7TH AVE S

SOUTH PARK BRIDGE

KING COUNTY AIRFIELD & BOEING

SR 99 WEST MARGINAL WAY S

8TH AVE S

10TH AVE S

12TH AVE S

DALLAS AVE S

S CLOVERDALE ST

14TH AVE S

OLSON PL SW

MYERS WAY S

For decades, the community has dreamed of a river walk and increased open space to increase livability and overcome historic inequities.

Community Vision

T-117 - 2015 (streets) & 2021 (habitat)

Georgetown-South Park Connection - tbd (SDOT)

South Park Bridge 2014

River walk mural 2019

8th & Riverside Open Space 2013

7th Ave Pump Station 2021

South Park Riverwalk

South Park Plaza

12th + Elmgrove

Duwamish Waterway Park Expansion

Duwamish Waterway Park

Potential Water Quality Facility

Duwamish Trail

Community Center

Marra-Desimone

Georgetown/South Park Connection

7th Ave Pump Station 2021

Outside Citywide South Park Neighborhood Profile, OPCD, 2019

Racial Equity

Meeting Duwamish Valley Program goals



Healthy Communities

Trees and plantings:

- Absorb noise and air pollution
- Lessen heat impacts/offer climate resilience
- Benefit mental health

Thriving Neighborhoods

- Community plaza and gathering space
- Iconic play structure
- Art and cultural expression

Prosperity in Place

- Site already heavily used by community for events and markets
- Will become point of community pride

Employment and Economic Opportunity

- Latinx merchant use of space before construction in a unique way for Parks
- Community role in plaza stewardship and programming

Equitable Access to City Resources, Accountability, and Decision-making

- Spanish and Vietnamese teaching artists to collect community input
- Hiring Indigenous-led consulting group

Community Leadership and Capacity Building

- Expands capacity of community groups that organize plaza events and markets
- Community groups that help with design input: Duwamish Valley Youth Corps and Duwamish Valley Sustainability Association



Site



Duwamish Waterway

habitat (no access)

habitat (no access)

KC surplus property

potential riverwalk connections

missing sidewalk

S Orr Street
Industrial activity

blank wall

fence

fence

blank

traffic noise

rain gardens

South Park Marina

Dallas Ave S

street is potential festival space

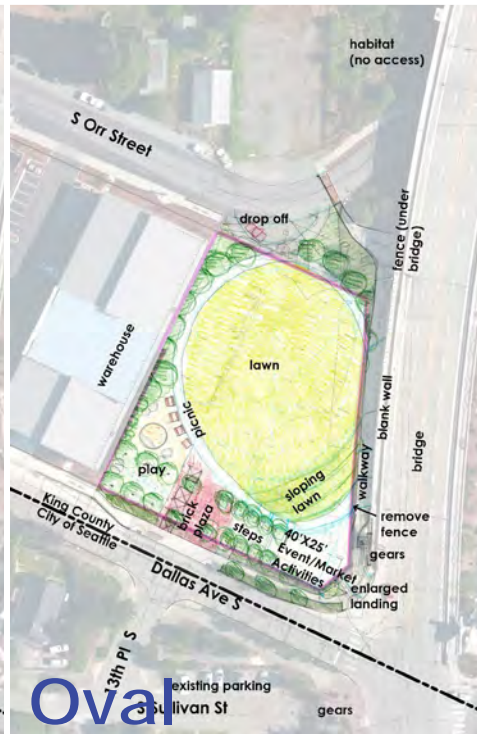
busy intersection commercial connections

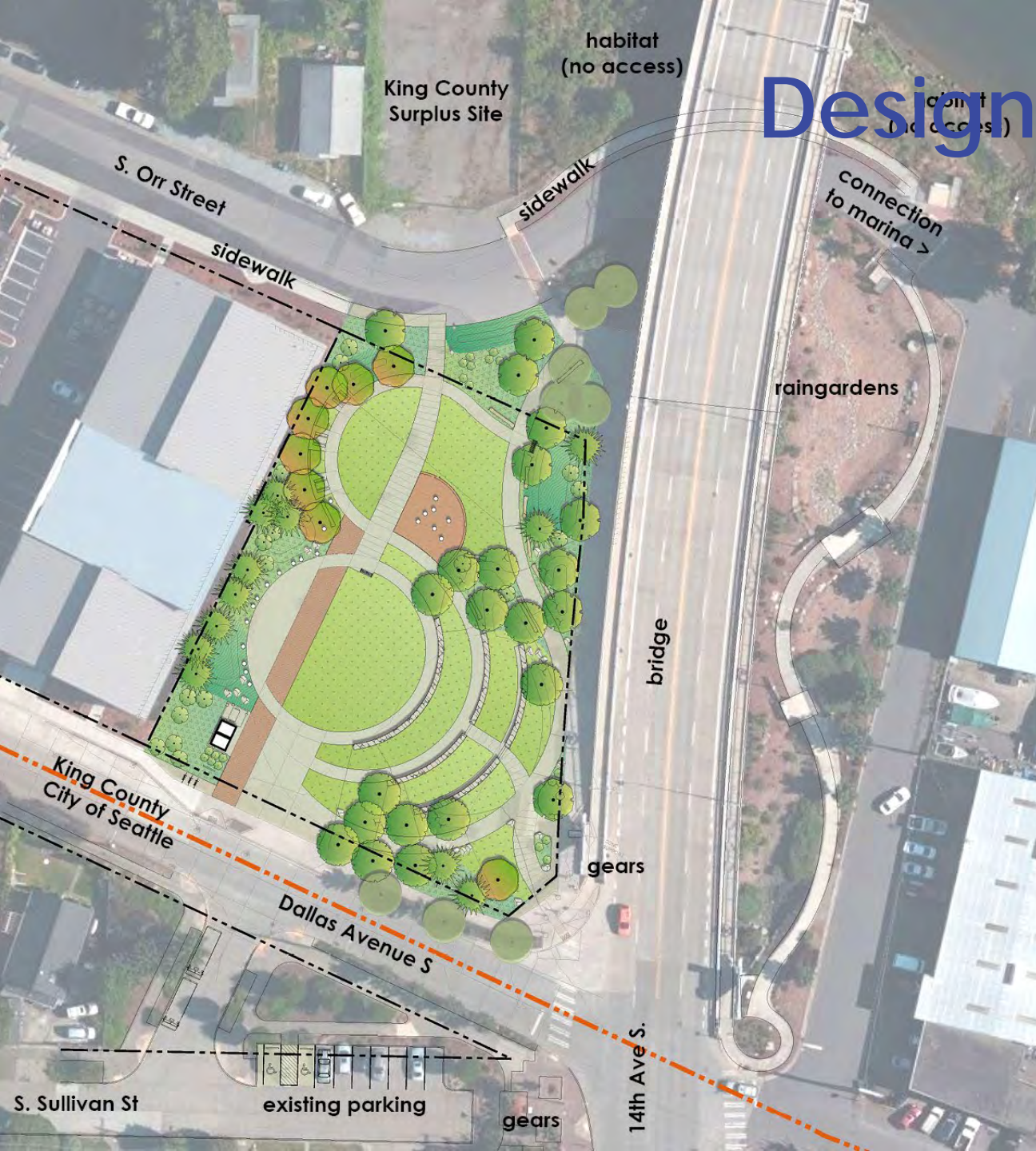
13th Pl S

S Sullivan St dead end



Design Progress

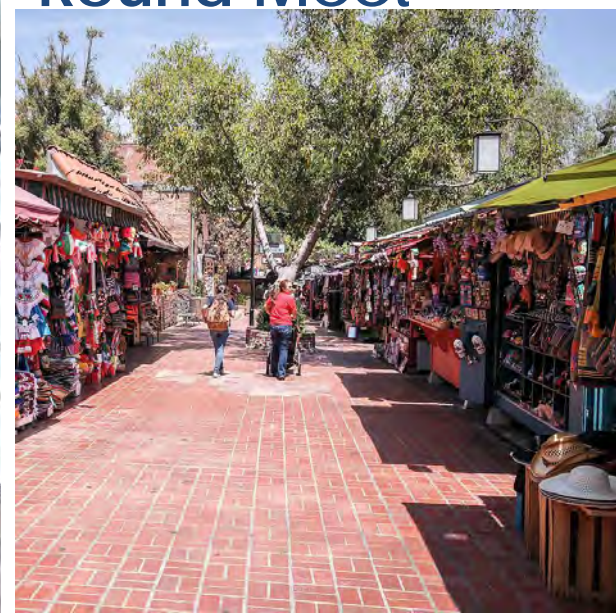




Design Progress



Oxbow and Round Meet



Design Commission Input (2/4/21)



1. Ensure there is budget and space **for art and cultural expression**; Maintain programmatic partnerships with local community
2. Maintain attentiveness as you continue to develop an **art** strategy
3. Be specific and intentional about addressing and **providing space for cultural engagement & programming**
4. **Consider potential interactions and engagements beyond the park property lines**; Coordinate with King County on developing visions for the surplus property and connections to adjacent rain gardens; Continue to think about how larger events can spill out onto Dallas Ave S
5. Coordinate to provide a **marked crossing at Dallas Ave S and 13th PI S**
6. Continue to develop the **entry plaza to maximize ability to provide space during large events** and community gatherings
7. **Take advantage of unique spaces** within and surrounding the park- bridge overlook, rain gardens, and paces for small and large events – that elevate the experience for park users
8. Refine **technical detailing of lawn, pathways, and enclosures** to ensure they can support large programming
9. Provide **diagram of accessible pathways** and areas within the park

Continued Community input

SD outreach

- November 16 2019 Public Outreach Event at plaza
- Fall 2019 Duwamish Valley Youth Corps (DVYC)
- January-February 2020 Online Survey #1
- August-October 2020 – Online Survey #2 - options (boards at plaza, postcards, radio)
- October 2020 – met with Duwamish Valley Sustainability Association
- May 2021 – Survey #3

DD outreach

Events, events w/teaching artists:

- Duwamish River Fest – Aug 7
- SeaMar Health Fair - Sept 19
- Mercadito - Oct 12
- Latino Market - Oct 16
- meeting 2 with Duwamish Valley Sustainability Association - Nov 2021
- Hiring Indigenous-led consulting group



Input collections

Collection boxes to organize input

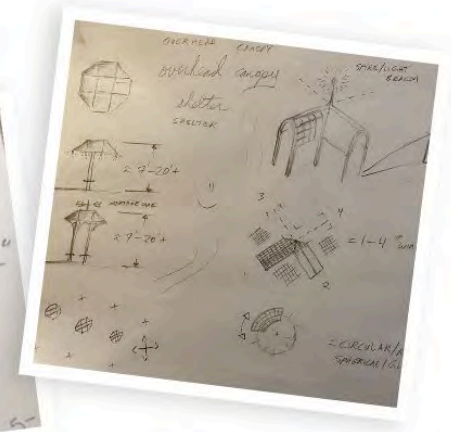
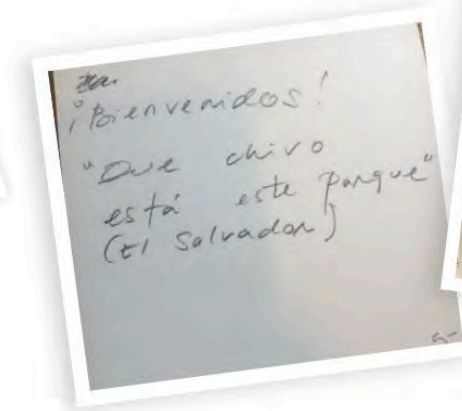
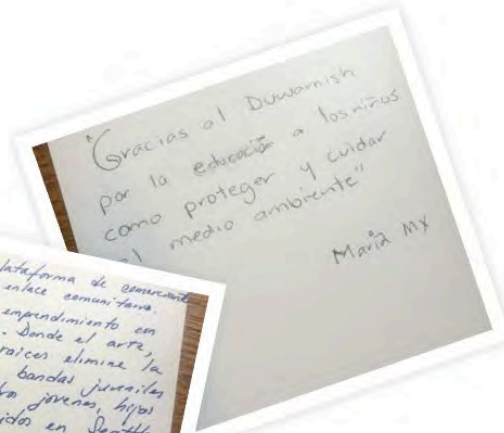
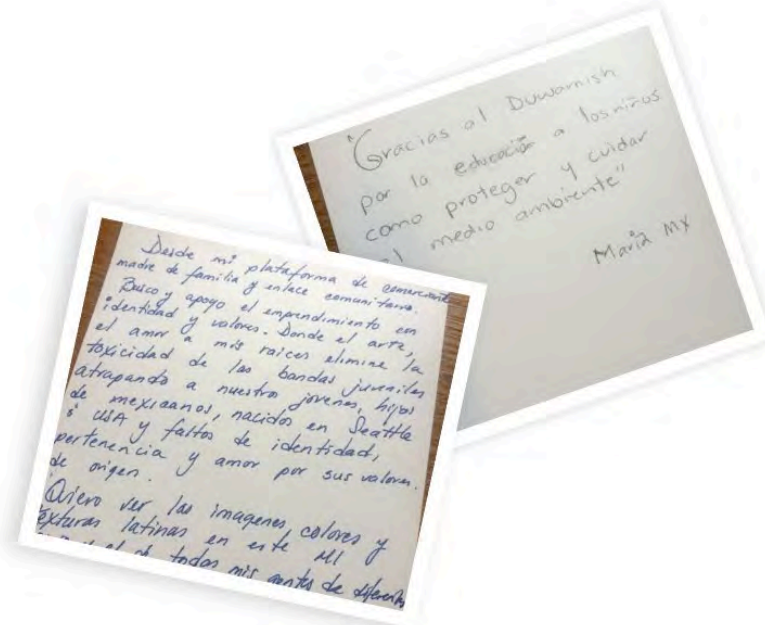


Amaranta Sandys

Zian Dinh

What stories could be told in the park?

How can we reflect their culture in the park design?



Community input

"I'd like to see a Kiosk and a place where we can sit, with grass and green areas, a place that you can go with your family."

"Covered outdoor spaces with bbq grills, tables, and chairs."

"I'd like to see areas where children can play."

"I'd like to honor and give thanks to the original care takers of this land."

"I'd like to see bright colors and flags from Latin-American countries."

"Plants, trees, lights, and benches so we can sit and have a chill time."

"I'd like to see images, colors, and textures of latin culture...what is called "My hood/ Barrio" and my people that live near by."

"I'd like to see a metal plate or a painting that reflects or to represent the first nation people."



Input themes: layers of culture

Duwamish community of past and present

- Show connection to river
- Use native plants
- Using Duwamish place names
- Art (murals, inlays, patterns) expressing native stories

South Park community of today

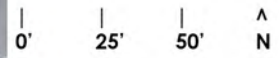
- Color & patterns & flowers reflecting the regions in where South Park families are from – benches/inlaid tile/banners
- Decorated SOUTH PARK sign as stage backdrop, similar to ones in Mexico
- Quiosco = pavilion for gathering, shade, performances
- Contemporary Mexican art - hip hop & street art
- *Expressing Duwamish culture & history is important throughout community*



October 2021 Design



- 1 Accessible Parking/Access
- 2 Upper Entry Plaza
- 3 Sinuous river path
- 4 Plaza with Brick Road
- 5 Space for Stage
- 6 Rainbow Sign, Bikes, SPR kiosk
- 7 Seatwalls with inlaid art
- 8 Play Structure
- 9 Picnic and Seating
- 10 Stormwater conveyance
- 11 Portable toilets



Duwamish Connection



The sinuous path connecting through the site and to the river parcel is dark concrete inlaid with Oyster shells to express black sands that underlay the valley and the shell middens of the area

Landscape Plan:



DUWAMISH SIDE

A play space celebrating the river and the Duwamish people past and present



Fish Weir



Pole Climber

Natural Play

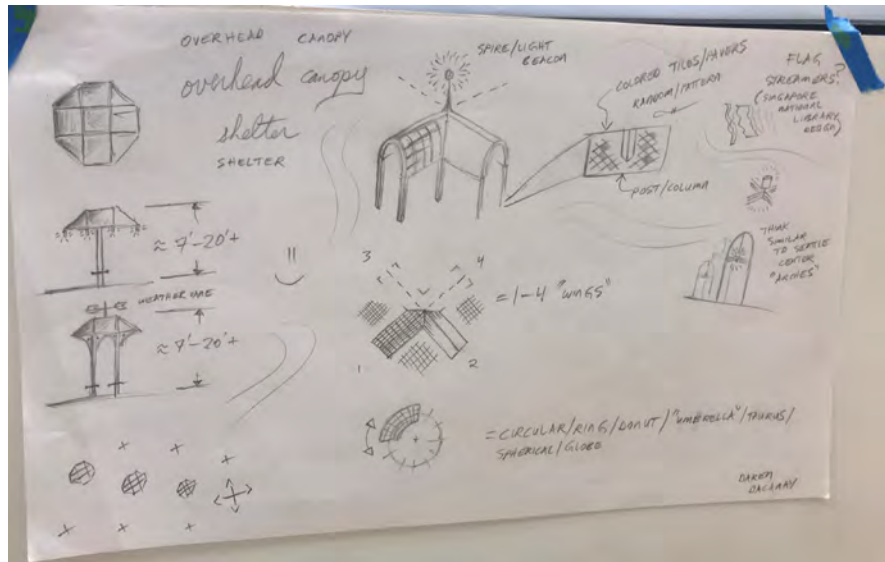
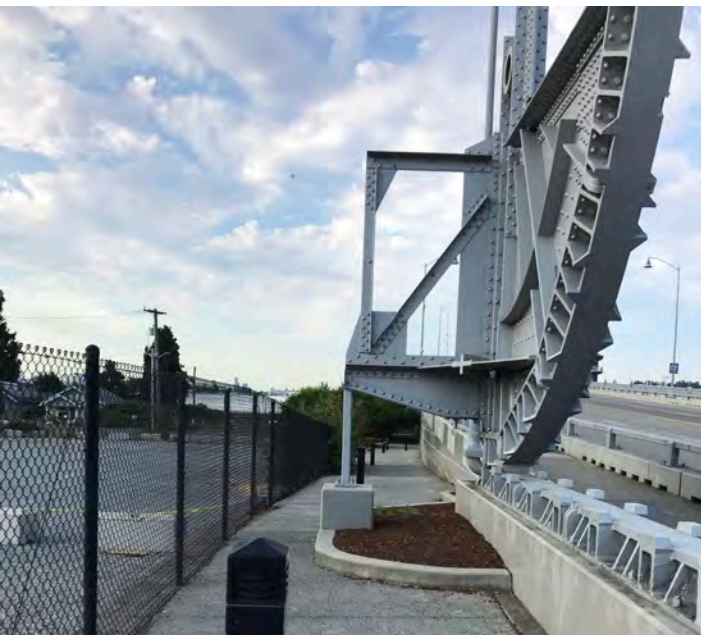


Landscape Plan:

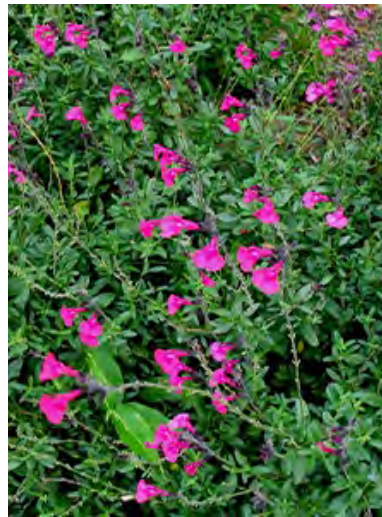
PLAZA SIDE



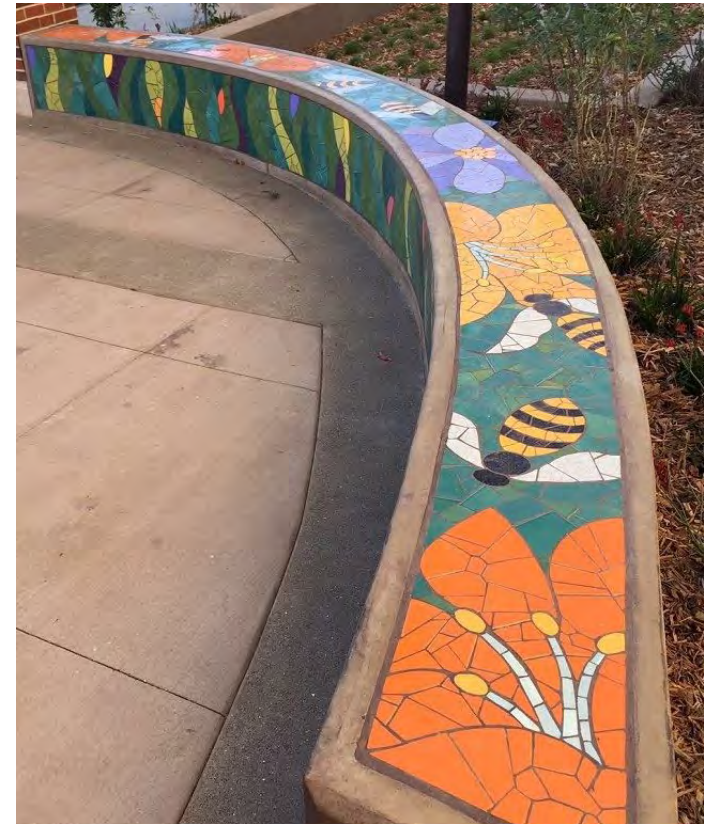
Upper entry



Colorful Entry Plants



Wall patterning



Expressive furniture



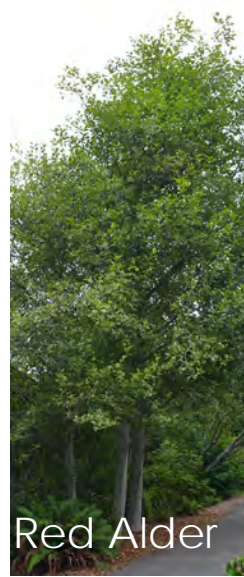
trees



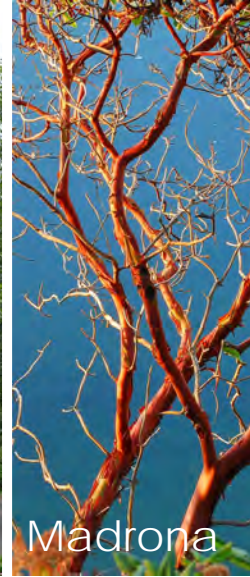
Cascara



Shore Pines



Red Alder



Madrona



Maple



W. Red Cedar



Vine Maple

Native Plants

shrubs



Thimbleberry



Oceanspray



Evergreen Huckleberry

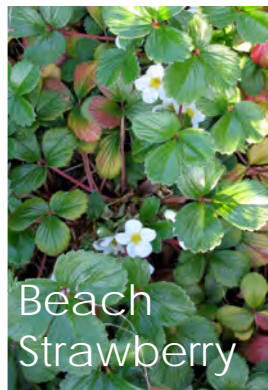


Oregon Grape

shore



logs



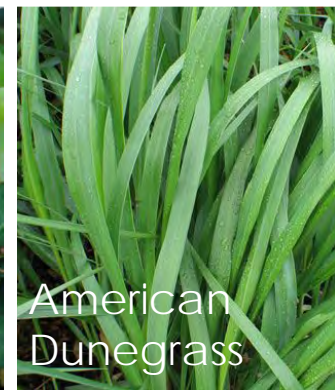
Beach Strawberry



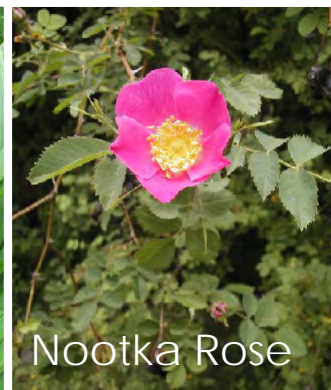
Snowberry



Salal



American Dunegrass



Nootka Rose

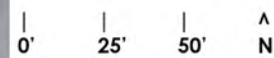
Additional enhancements

Plaza enhancements not yet funded (funding being pursued by Parks):

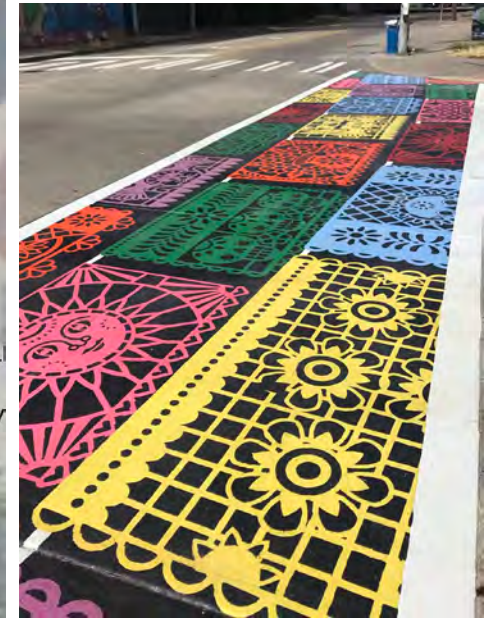
1. Special Paving in Plazas
2. Kiosk (perhaps with PV/Communication /Sustainable elements)
3. Art Screens
4. Event lighting

Outside art opportunities:

5. Mural on bridge (KC owned) – community
6. Crosswalk art – SDOT

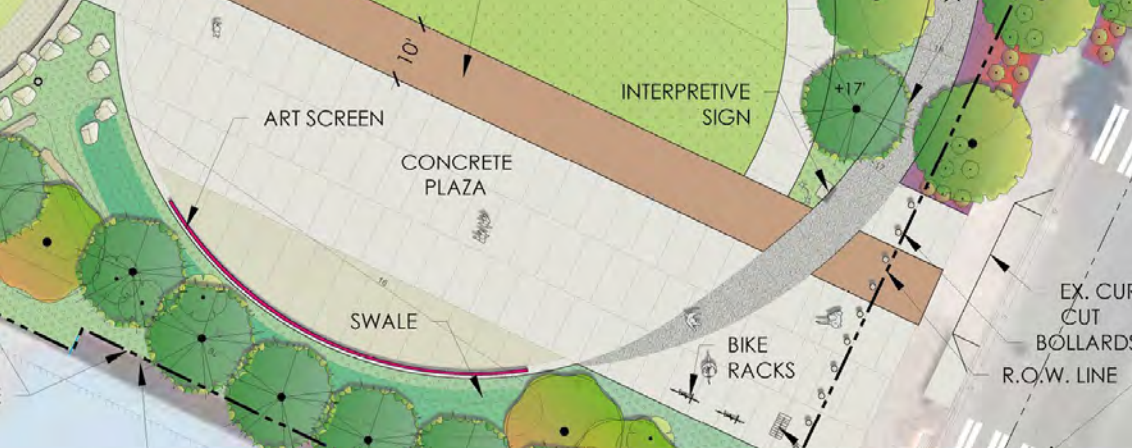


Paving



Dallas crosswalks can continue the theme from 8th Ave or create a new Oxbow statement

Brick paving recalls the original highway



Colorful sign backdrop

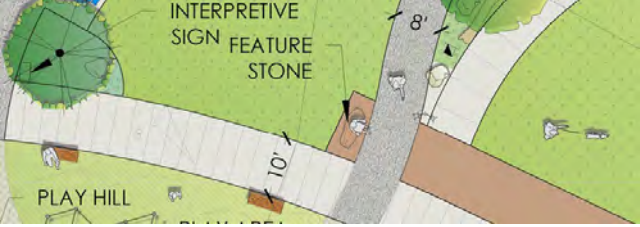




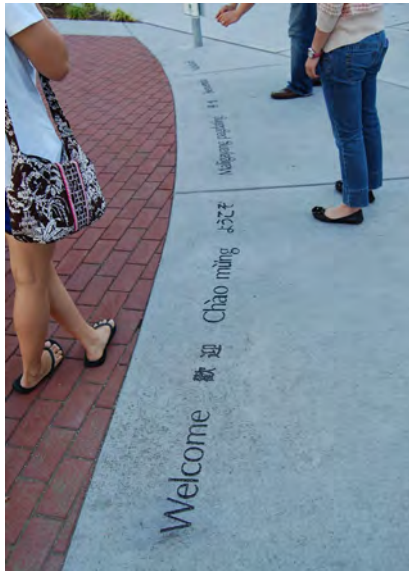
Mural

A large mural on the bridge could paint a story connecting the river & Duwamish culture to the immigrant cultures in the community





Acknowledgement



Daily Use



Events



Programming Support

- 2018 SPR's Dia de Los Muertos
- 2019 Lucha Libre
- 2021 Duwamish River Fest
- 2021 Mercadito (Tuesdays Summer & Fall)
- 2021 Latino Market (Weekends Summer & Fall)
- Poles for hanging flags and banners
- Vehicle access to drop off tents, tables, goods
- Storage space for repeat events – offsite containers?
- Amplified noise directed toward bridge, not toward houses
- Ample space for temporary tents



Safety and access



Home Zone Project Completed:

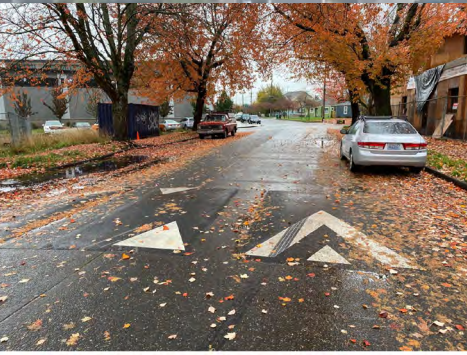
1. Speed cushions on Dallas west of 12th and 10th
2. On-Street parking added to Dallas east of 12th with gain of 18 spaces
3. Neighborhood Greenway with Stay Healthy Street on Thistle & Sullivan

In Planning or Design through Home Zone Project:

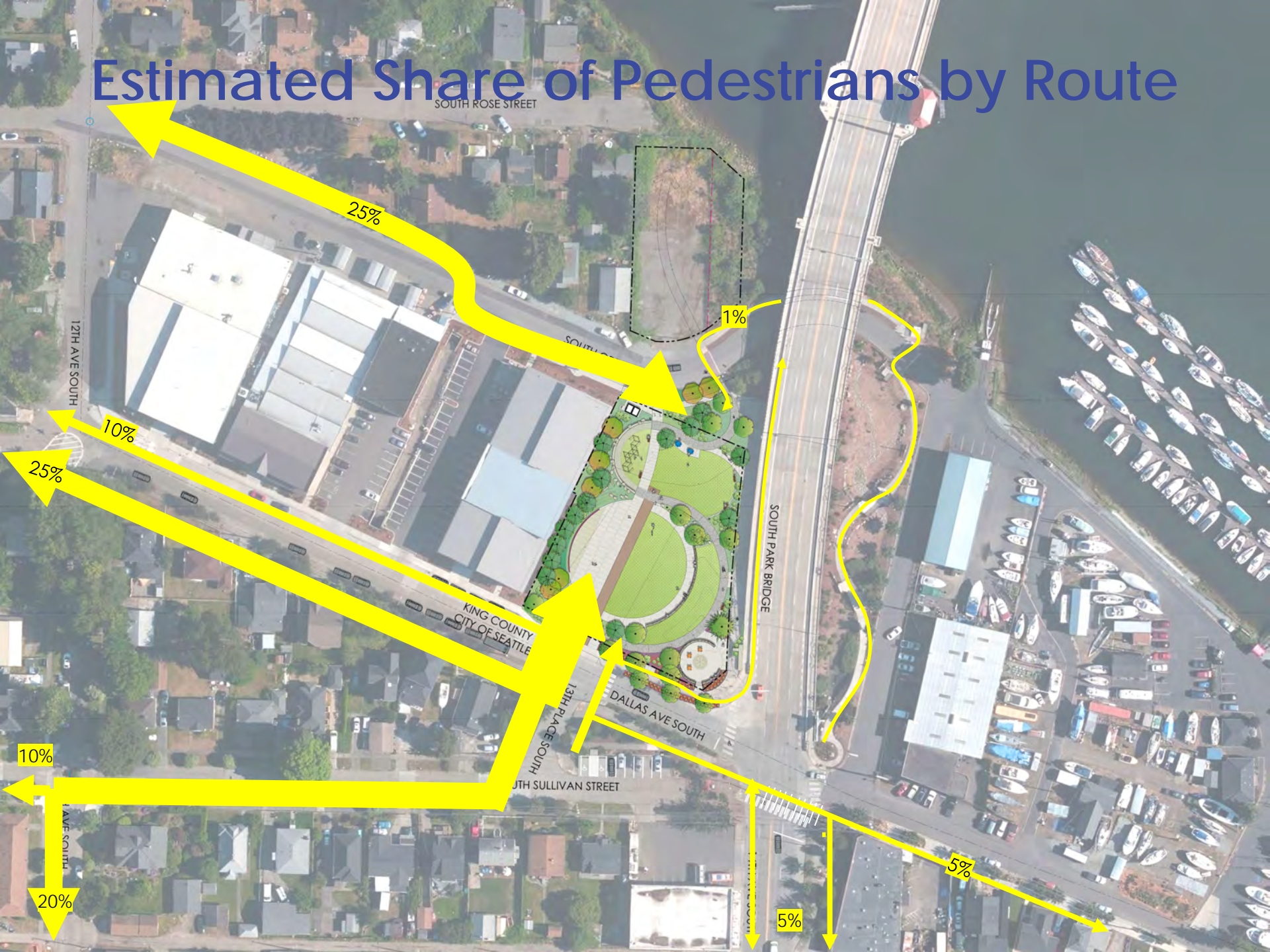
4. Bike lanes/ramps connecting 16th Ave Bridge bike lanes to Sullivan Neighborhood Greenway
5. Median pedestrian refuge island at 12th/Dallas
6. Half-Signal at 14th/Dallas

Other Improvements

7. Accessible parking through SDOT greenway enhancements
8. New electric car charging by SCL
9. New crosswalk on Dallas by SDOT & Parks w/potential art enhancement
10. New crosswalk contingent on approval by King County
11. Future park at King County Parcel with connection to Rose Street
12. Existing brick crosswalk



Estimated Share of Pedestrians by Route



Plaza Visitor Capacity & Access

- Comfortable capacity of approx. 500 persons present
- 30% - 50% walk from neighborhood
- 5% - 10% bike
- 45% - 65% drive/drop-off
- On-street parking adequate to support that level of driving
- Precedent for weekend shared use of adjacent industrial building's parking lot for large events to mitigate spillover into neighborhood



Accessibility Plan

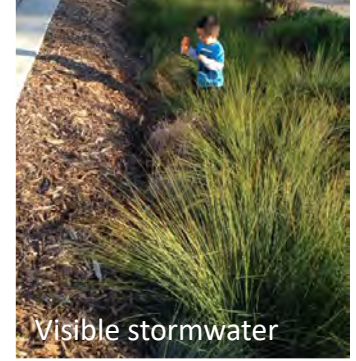


Recommended Improvements

- Marked crosswalks at Dallas/13th Pl.
- ADA parking on Sullivan

0' 20' 40' N

Sustainability & Resiliency



KC Conservation Fund Analysis

Impervious surface:

Plaza+Play Area	8,561 sf
Upper Entry	+ 1,384 sf
Total =	9,945 sf
	(27% of 36,840 sf site)

Paths, seatwalls, and pads for tables and seating not included.



Sea Level Rise 2100 – extreme tide impacts in blue

Discussion

