



OFFICE OF ARTS & CULTURE

SEATTLE

Seattle's public art program integrates artworks and the ideas of artists into public settings. Established in 1973, the public art ordinance specifies that one percent of eligible city capital improvement project funds be set aside for the commission, purchase and installation of artworks, enriching the public experience and giving voice to artists.



CULTURE

Established by ordinance in 1973, Public Art 4Culture commissions contemporary art for shared public space in King County, ensuring that King County buildings, public places and infrastructure include the work and thinking of artists. 4Culture maintains King County's public art collection, which helps define county buildings as cultural spaces.

ON THE COVER

Alexander Liberman's *Olympic Iliad* (see page 4 for description). Photo: Jordan Nicholson.

INSIDE COVER

Jean Whitesavage and Nick Lyle's *Rain Forest Gates* (see page 19 for description). Photo: Chris Bennion.
Teresita Fernández's *Seattle Cloud Cover* (see page 9 for description). Photo: Aaron Brethorst.

Office of Arts & Culture
City of Seattle
700 Fifth Ave., Suite 1766
P.O. Box 94748
Seattle, WA 98124-4748
www.seattle.gov/arts
(206) 684-7171



Mixed Sources
Product group from well-managed
forests and recycled wood or fiber
www.fsc.org Cert. No. SW-COC-00114
© 1996 Forest Stewardship Council



Seattle Public Art

Your guide to public art in downtown Seattle

Seattle: a center for innovation and creativity.

Stroll through downtown Seattle and you will see proof of city's ingenuity in public art. Artworks located on plazas and in streetscapes, parks, and civic and corporate buildings enrich Seattle's urban landscape. This guide features over 200 artworks in downtown Seattle from the collections of the city of Seattle, King County (administered by 4Culture), and other select organizations.

And there's more art out there. The city's collection encompasses more than 400 permanent public artworks throughout Seattle, and across King County there are more than 300 permanent works from the county's collection.

This map is divided into 10 areas: Seattle Center, South Lake Union, the Waterfront, Belltown, Denny Triangle, Pike Place Market, Central Business District, Pioneer Square, Chinatown/International District and SoDo. Enjoy your exploration of our city through the lens of art.

About this guide

This map was originally produced in 2008 and updated in 2016 by the Seattle Office of Arts & Culture. Do not reproduce without permission.

Artworks included in this guide are in the city of Seattle's public art collection unless otherwise noted.

GET THE

STORY



Make your smartphone a smARTphone.

Learn more about the artworks you see by downloading the public art app STQRY. Available in more than 60 languages on the iPhone, Android and Windows mobile operating systems free of charge, STQRY will help you find artworks and provide information about the artist, materials and background.



SEATTLE CENTER

SEATTLE REPERTORY THEATRE

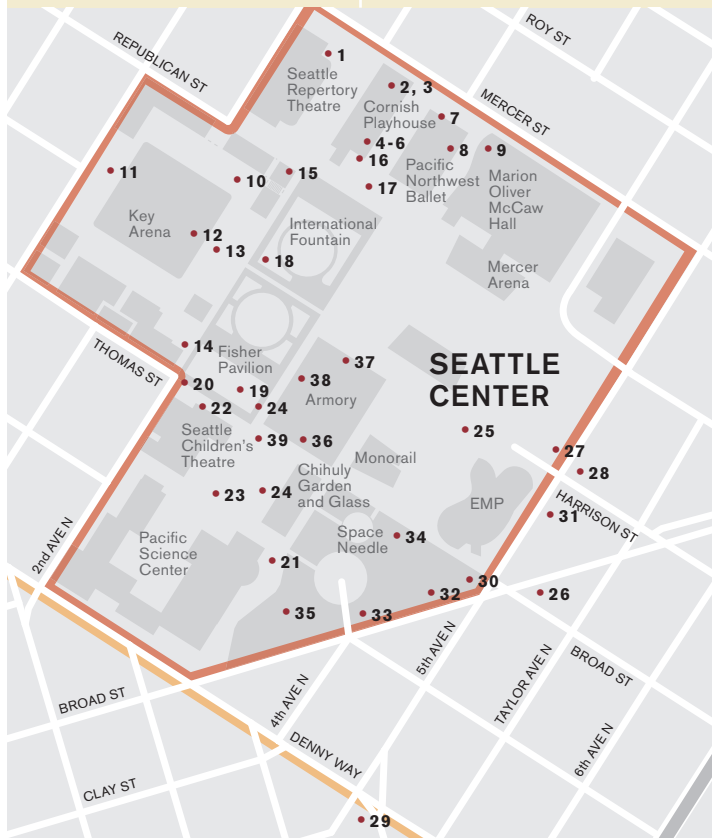
- 1 Neon for the Bagley Wright Theatre**, Stephen Antonakos, 1983. Neon tubing. BAGLEY WRIGHT THEATRE, BUILDING FAÇADE.

CORNISH PLAYHOUSE

- 2 Fountain of the Northwest**, James Fitzgerald, 1962. Cast bronze fountain. PLAYHOUSE COURTYARD.
- 3 Barbet**, James Washington Jr., 1964. Carved stone sculpture. PLAYHOUSE COURTYARD ENTRANCE.

FOUNDER'S COURT

- 4 Encircled Stream**, Ned Kahn, 1995. Anodized aluminum and granite water feature.
- 5 Cairn from the Lang Fountain**, Francois Stahly, 1962. Carved stone cairn.
- 6 Untitled**, Horace Washington, 1995. Cast bronze and granite medallions, cast concrete seating.
- 7 Fu Dogs**, artist unknown, 1963. Concrete sculptures. PACIFIC NORTHWEST BALLET ENTRANCE.



MARION OLIVER McCAW HALL

- 8 Dreaming in Color**, Leni Schwendinger, 2003. Light on large-scale mesh scrims. KREIELSHEIMER PROMENADE.
- 9 An Equal and Opposite Reaction**, Sarah Sze, 2005. Mixed-media suspended sculpture. MARION OLIVER McCAW HALL LOBBY.



PHOTO: BILL MOHN/COURTESY OF SEATTLE OPERA.

AROUND KEYARENA

- 10 Fountain of Creation**, Everett Dupen, 1962. Bronze sculptures. KEYARENA NORTH COURT.
- 11 Play Ray Plaza**, Vicki Scuri, 1995. Colored concrete and stainless steel plaza. KEYARENA WEST PLAZA.
- 12 Hydraulics**, Clark Wiegman and Trimpin, 1995. Steel, aluminum and copper installations with water. KEYARENA EAST LOBBY.
- 13 Acrobat Constellation**, Timothy Siciliano, 1995. Aluminum and painted steel sculptures. KEYARENA EAST PLAZA.
- 14 Focus**, Perri Howard, 2009. Laminated glass fence and skate panels. *Seattle Center Collection*. SEATTLE CENTER SKATEPARK. (See photo on page 1.)
- 15 Pool**, Randy Hayes, 1985. Painted plywood. NORTHWEST ROOMS.

SEATTLE CENTER (CONTINUED)

AROUND THE INTERNATIONAL FOUNTAIN

- 16 Fountain of Sesaragi**, Gerard Tsutakawa, 2000. Bronze fountain. **NORTH OF THE INTERNATIONAL FOUNTAIN.**
- 17 Kobe Bell**, artist unknown, date unknown. Cast bronze and wood bell. **NORTH OF THE INTERNATIONAL FOUNTAIN.**
- 18 Neototems**, Gloria Bornstein, 1995. Bronze and concrete sculpture. **SOUTH OF THE INTERNATIONAL FOUNTAIN.**
- 19 Twine and Branch and Biography of a Branch**, Deborah Mersky, 2002. Mosaic and painted wall friezes. **FISHER PAVILION, INTERIOR AND EXTERIOR.**

AROUND SEATTLE CHILDREN'S THEATRE

- 20 Bird Song Listening Station**, Douglas Taylor, 2008. Wind-powered steel sound sculpture. **NORTH OF CHILDREN'S THEATRE AT FISHER PAVILION.**
- 21 Sonic Bloom**, Dan Corson, 2013. Steel, fiberglass, photovoltaic, LEDs, sensors and interactive sound system. *Commissioned by the Pacific Science Center.* **NORTHEAST CORNER OF PACIFIC SCIENCE CENTER.**
- 22 Untitled artworks**, Garth Edwards with Ray Serrano, 1993. Painted steel cutouts and ceramic murals. **EXTERIOR OF CHILDREN'S THEATRE.**
- 23 Neototems Children's Garden**, Gloria Bornstein, 2002. Bronze sculpture. **EAST OF CHILDREN'S THEATRE.**
- 24 Seattle Mural**, Paul Horiuchi, Olivo Santagostino and Paul Thiry, 1962. Venetian glass mosaic. **MURAL AMPHITHEATER.**

ALONG FIFTH AVENUE

- 25 Artists at Play Playground**, Trimpin and Judith Caldwell and site design by Site Workshop, 2015. *Commissioned and funded by the Wright Family and Center Art, LLC.*
- 26 Broad Street Facility**, Carolyn Law, 1985. Vinyl-covered steel fencing. **FIFTH AVE. NORTH AND BROAD STREET.**
- 27 Grass Blades**, John Fleming and r/b/f architecture with Susan Zoccola, 2003. Painted steel sculpture. *Seattle Center Collection.* **FIFTH AVE. NORTH AND HARRISON STREET.**
- 28 After All, Life is Change**, Dick Weiss, 2008. Stained glass window wall. **FIFTH AVE. NORTH GARAGE AT HARRISON STREET.**
- 29 Chief Seattle**, James Wehn, 1912. Cast bronze sculpture with gold leaf on granite base. **TILIKUM PLACE, FIFTH AVE. AND DENNY WAY.**
- 30 John T. Williams Honor Pole**, Rick L. Williams (lead artist), 2012. Red cedar, paint.
- 31 Impatient Optimist**, Janet Echelman, 2015. Spliced and braided PTFE, UHMWPE, and polyester fibers with colored LED lighting. *Bill and Melinda Gates Foundation.*

BROAD STREET GREEN

- 32 Black Lightning**, Ronald Bladen, 1985. Painted steel sculpture.
- 33 Moongates**, Doris Chase, 1999. Bronze sculpture.
- 34 Moses**, Tony Smith, 1975. Painted steel sculpture.
- 35 Olympic Iliad**, Alexander Liberman, 1984. Painted steel sculpture. (See photo on cover.)

ARMORY

- 36 Human Forms in Balance**, Rita Kepner, 1975. Stone sculpture. **SOUTH ENTRANCE FOYER.**
- 37 Queue VI**, William Sildar, 1975. Laminated wood sculpture. **NORTH ENTRANCE FOYER.**
- 38 Migrare**, Kelly McLain, 1995. Painted sand-cast glass sculpture. **WEST FAÇADE.**
- 39 Seattle Center Totem**, Duane Pasco, Victor Mowatt and Earl Muldon, 1970. Painted western red cedar carving. **SOUTHWEST CORNER OF BUILDING.**



PHOTO: COURTESY DAN CORSON.

SOUTH LAKE UNION (SLU)



PHOTO: BENJAMIN BENSCHNEIDER.

- 40 Wood Pile**, Jenny Heishman, 2012. Fabricated stainless steel, bronze and urethane paint. *Commissioned by Vulcan Real Estate.* BOREN AVE. NORTH AND THOMAS STREET.
- 41 Cabin Corners**, Jenny Heishman, 2010. Fabricated aluminum and epoxy paint. *Commissioned by Vulcan Real Estate.* BOREN AVE. NORTH AND REPUBLICAN STREET.
- 42 Labyrinth**, Linda Beaumont, 2003. Multi-layered glass with photo-process imagery. *Commissioned by Vulcan Real Estate, Harbor Properties and Seattle Biomedical Research Institute.* 307 WESTLAKE AVE. NORTH.
- 43 Placeholders**, Claudia Fitch, 2007. Fabricated steel and urethane epoxy paint. *Commissioned by Vulcan Real Estate and Group Health Cooperative.* TERRY AVE. NORTH AND THOMAS STREET.
- 44 The Web**, Ellen Sollod, 2013. Hatch covers. VARIOUS LOCATIONS ALONG MERCER STREET FROM FAIRVIEW AVE. NORTH TO NINH AVE. NORTH.
- 45 Petros**, Julie Speidel, 2015. Stainless steel sculptures. AMAZON DOPPLER BUILDING (DENNY TRIANGLE).
- 46 Articulated Start**, Eric Eley, 2011. Mild steel, stainless steel and urethane enamel paint. *Commissioned by Vulcan Real Estate.* IN PUBLIC PLAZA OFF BOREN AVE. NORTH.
- 47 Beacon, Cloud, Toto**, Jamie Walker, 2010. Fabricated aluminum and epoxy paint. *Commissioned by Vulcan Real Estate.* 550 TERRY AVE. NORTH.
- 48 Baladeuse**, James Harrison, 2006. Art glass and stainless steel. *Commissioned by Vulcan Real Estate and PEMCO Insurance.* AT INTERSECTION OF ALLEY, THROUGH BLOCK'S CONNECTION, 223 YALE AVE. NORTH.
- 49 Convergence**, Ann Gardner, 2009. Glass mosaic and stainless steel. *Commissioned by Vulcan Real Estate and Schnitzer West.* IN PUBLIC PLAZA OFF TERRY AVE. NORTH, 426 TERRY AVE. NORTH.
- 50 Ping Pong Plaza**, Buster Simpson, 2004. Bronze and stainless steel. *Commissioned by Vulcan Real Estate and Harbor Properties.* IN PUBLIC PLAZA OFF HARRISON STREET, 401 TERRY AVE. NORTH.
- 51 Untitled**, Ellen Sollod, 2014. Ink jade and limestone benches. VALLEY STREET AND TERRY AVE. NORTH.
- 52 Threshold**, Leo Saul Berk, 2009. Salvaged wood and epoxy resin. *Commissioned by Vulcan Real Estate.* 120 WESTLAKE AVE. NORTH.
- 53 Origami Tessellation 3² 4.3.4 (Fractured)**, Ellen Sollod, 2012. Stainless steel. MERCER STREET AND BOREN AVE. NORTH.
- 54 Lost in Thought** (three artworks), Ellen Sollod, 2013. Water-jet cut tile. THREE LOCATIONS: A. SOUTHEAST CORNER OF VALLEY STREET AND WESTLAKE AVE. NORTH. B. NORTHWEST CORNER OF VALLEY STREET AND FAIRVIEW AVE. NORTH. C. SOUTHEAST CORNER OF VALLEY STREET AND FAIRVIEW AVE. NORTH.
- 55 Blanche**, Peter and Sue Richards, 2011. Steel, wood, PVC pipe, aluminum, Thruflow decking, stainless steel and dock floats. NORTH END OF LAKE UNION PARK.
- 56 Mirall**, Jaume Plensa, 2015. Stainless steel sculptures. *On loan from the Paul G. Allen Family Collection.* NINTH AVE. NORTH AND MERCER STREET.
- 57 Head in the Clouds: Nebulous**, Dan Corson, 2015. Glass, transparency conducting film, aluminum, photovoltaics, LEDs and electronics. *Commissioned by Vulcan Real Estate.* NINTH AVE. NORTH AND HARRISON STREET.
- 58 Re-Stack**, Annie Han and Daniel Mihalyo, 2015. Stainless steel. *Commissioned by Vulcan Real Estate.* NINTH AVE. NORTH AND THOMAS STREET.
- 59 JewelBoats**, Jen Dixon, 2016. Glass mosaic, stainless steel, stamped concrete. WESTLAKE CYCLE TRACK.
- 60 Atmospheric Flurry**, Catherine Wagner, 2016. Illuminated passageway. MERCER ST. AND DEXTER AVE. NORTH.



MYRTLE EDWARDS PARK WATERFRONT, NORTH OF BAY STREET.

61 Undercurrents, Laura Haddad and Tom Drugan, 2003. Stainless steel, concrete, stone and landscaping. *King County Public Art Collection (4Culture)*.

64 Adjacent, Against, Upon, Michael Heizer, 1976. Concrete and granite sculpture.



PHOTO: MICHAEL HEIZER.

SEATTLE ART MUSEUM, OLYMPIC SCULPTURE PARK

2901 WESTERN AVE. SELECTED ARTWORKS AT LOCATION.

62 Eagle, Alexander Calder, 1971. Painted steel sculpture. *Seattle Art Museum Collection*. Z-PATH BETWEEN NORTH AND WEST MEADOWS.

65 Neukom Vivarium, Mark Dion, 2006. Mixed-media installation and custom greenhouse. *Seattle Art Museum Collection*. ELLIOTT AVE. AND BROAD STREET.

63 Wake, Richard Serra, 2004. Weatherproof steel sculpture. *Seattle Art Museum Collection*. NORTH OF PAVILION.

66 Echo, Jaume Plensa, 2015. Polyester Resin, Marble Dust, Steel. *Seattle Art Museum Collection*. OLYMPIC SCULPTURE PARK.



PHOTO: PAUL MACAPIA.

67 Seattle Cloud Cover, Teresita Fernández, 2006. Laminated glass wall with photographic interlayer. *Seattle Art Museum Collection*. ON RAILROAD OVERPASS.

68 Father and Son, Louise Bourgeois, 2005. Stainless steel and aluminum fountain and bronze bell. *Seattle Art Museum Collection*. ALASKAN WAY AND BROAD STREET.

BELL STREET PIER

69 Bell Harbor Beacon, Ron Fischer, 1996. Painted steel and light sculpture. *Port of Seattle Art Collection*. ALASKAN WAY BETWEEN LENORA AND VIRGINIA STREETS.

SEATTLE AQUARIUM

PIER 59 AND PIER 60.

70 The Wave Wall, Susan Zoccola, 2007. White paneling. *Seattle Parks and Recreation Collection*. RECEPTION AND FOYER.

WATERFRONT PARK

ALASKAN WAY AND UNION STREET.

71 Waterfront Fountain, James Fitzgerald and Margaret Tompkins, 1974. Bronze fountain.

ALONG ALASKAN WAY

72 Ivar Feeding the Gulls, Richard Beyer, 1988. Bronze and aluminum sculpture. PIER 54, ALASKAN WAY AND MADISON STREET.

73 Marion Street Overpass Mural, Jose Orantes with Orca School, 1990. MARION STREET OVER ALASKAN WAY.

74 Parking Squid, Susan Robb, 2012. Galvanized steel. PIKE PLACE HILLCLIMB WALK AND ALASKAN WAY.

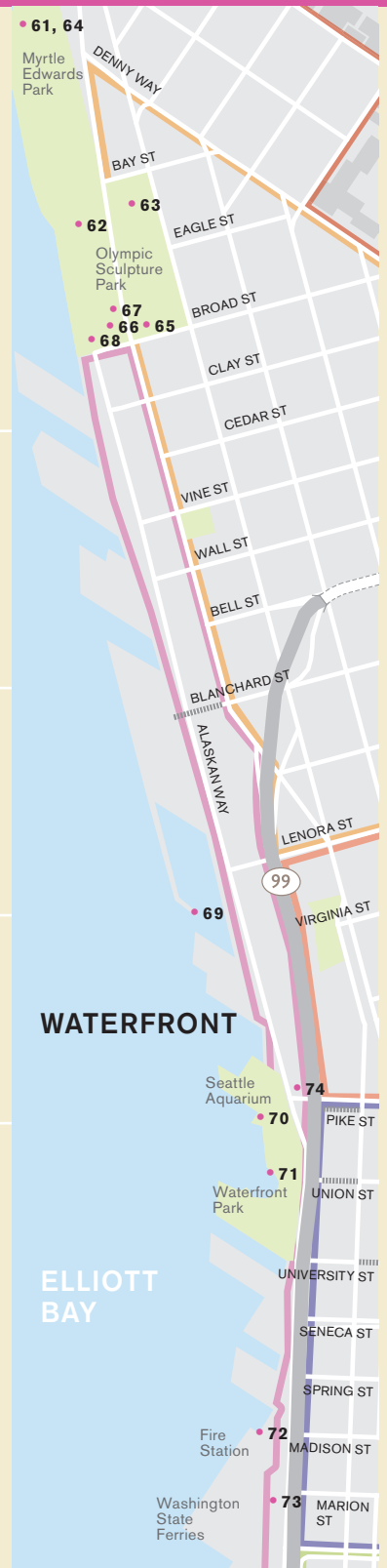




PHOTO: ERIK STUHAUG/COURTESY SEATTLE MUNICIPAL ARCHIVES PHOTOGRAPH COLLECTION.

- 75 Second Avenue Project**, Kurt Kiefer, 1996. Steel, concrete, fiberglass and aluminum streetscape elements. **SECOND AVE., BETWEEN DENNY WAY AND VIRGINIA STREET.**
- 76 First Avenue Project**, Jack Mackie, Buster Simpson, and Deborah and Paul Rhinehart, 1985. Stone and steel streetscape elements. **FIRST AVE., BETWEEN DENNY WAY AND VIRGINIA STREET.**
- 77 Beckoning Cistern**, Buster Simpson, 2002. Stainless steel and aluminum water cistern. **VINE STREET, BETWEEN FIRST AND WESTERN AVES.**
- 78 Wave Rave Cave**, Dan Corson, 2002. Sculpted foam and pea gravel lighting installation. **WESTERN AVE. AND BELL STREET.**

- 79 GyroJack**, Lloyd Hamrol, 1979. Concrete sculpture. **REGRADE PARK, THIRD AVE. AND BELL STREET.**



PHOTO: COURTESY BENSON SHAW.

- 80 Angie's Umbrella**, Jim Pridgeon and Benson Shaw, 2004. Stainless steel and aluminum sculpture. **WESTERN AVE. AND LENORA STREET.**
- 81 Popsicle**, Catherine Mayer, 2012. Steel, fiberglass and enamel paint. *Martin Selig Real Estate Collection.* **FOURTH AVE. AND BLANCHARD STREET.**
- 82 Souvenir**, Sheila Klein, 2014. Bronze sculptures. **BELL STREET PARK.**



PHOTO: JASON HALL.

- 83 Three Women: Girl, Young Woman, Mother and Child**, Akio Takamori, 2006. Painted cast aluminum sculpture. *Commissioned by Vulcan Real Estate and Schnitzer West.* **WHOLE FOODS MARKET, 2210 WESTLAKE AVE.**
- 84 Universal Adapter**, Cris Bruch, 2012. Cast bronze. *Commissioned by Vulcan Real Estate.* **DENNY WAY AND NINTH AVE.**



- 85 Cloud Haiku**, Squeak Meisel, 2011. Bronze sculptures. **SEVENTH AVE. AND VIRGINIA STREET.**
- 86 Sequence/Consequence**, SuttonBeresCuller, 2012. Mixed media (glass, acrylic, neon, cast iron, aluminum and concrete). **WESTLAKE AVE. BETWEEN OLIVE WAY AND STEWART STREET.**

WEST POLICE PRECINCT 810 VIRGINIA STREET.

- 87 Plaza Seat Cubes, 24-Hour Street Grid, Lockers, 911 History Wall**, Elizabeth Conner, 1999. Sculptural and fiber-optic installations.
- 88 Benches**, Elizabeth Conner, David Lilienthal and Steve Marks, 1999. Wood benches.

UNITED STATES COURTHOUSE 700 STEWART STREET.

- 89 Pillar Arc**, Ming Fay, 2004. Cast aluminum sculpture. *U.S. General Services Administration Collection.* **COURTHOUSE PLAZA.**
- 90 Reflection Fountain**, Paul Marioni and Ann Troutner, 2004. Water with cast glass panels. *U.S. General Services Administration Collection.* **COURTHOUSE LOBBY.**
- 91 Three Sets of Twelve**, Michael Fajans, 2004. Acrylic on panel mural. *U.S. General Services Administration Collection.* **GALLERIES OF COURTHOUSE LOBBY.**
- 92 Leaf**, Ed Carpenter with Oanh Tran and Grant Davis, 2004. Aluminum, stainless steel, dichroic glass and stone sculpture. *U.S. General Services Administration Collection.* **ATRIUM BETWEEN THE TOWER AND OFFICE WING.**
- 93 Quiltroad**, Sung-Ho Choi, 2004. Acrylic on canvas painting. *U.S. General Services Administration Collection.* **PUBLIC VIEWING ROOM ADJACENT TO THE ATRIUM.**
- 94 Winding Ribbon**, Deborah Mersky, 2004. Cut steel installation. *U.S. General Services Administration Collection.* **ENTRY TO THE LAW LIBRARY, 19TH FLOOR.**

D1

PIKE PLACE MARKET

VICTOR STEINBRUECK PARK WESTERN AVENUE AND VIRGINIA STREET.

- 95 Untitled Totem Pole**, Marvin Oliver and James Bender, 1984. Carved cedar pole.
- 96 Farmer's Pole**, Victor Steinbrueck and James Bender, 1984. Carved cedar pole.
- 97 Untitled Fence**, Victor Steinbrueck and Ramon Torres, 1984. Wrought iron fence. *Seattle Parks and Recreation Collection.*
- 98 Tree of Life**, Clark Wiegman, Karen Kiest and Kim Lokan, 2012. Stainless steel and tempered glass. *Homeless Remembrance Project.*



IN THE MARKET SELECTED ARTWORKS AT LOCATION.

- 99 Rachel**, Georgia Gerber, 1986. Bronze piggy bank. *Pike Place Market Foundation Collection.* PIKE PLACE ENTRANCE.
- 100 Short Cut**, Dan Webb, 2011. Seven stairwell lights. *Commissioned by Pike Place Market Foundation.* PIKE STREET HILLCLIMB.
- 101 Song of the Earth**, Aki Sogabe, 1999. Porcelain enamel murals. *Pike Place Market Preservation & Development Authority Collection.* IN THE RAFTERS AT PIKE PLACE ENTRANCE.



PHOTO: AKI SOGABE.

E2

CENTRAL BUSINESS DISTRICT

- 102 Hammering Man**, Jonathan Borofsky, 1992. Painted steel sculpture. SEATTLE ART MUSEUM, 1300 FIRST AVE.



PHOTO: IAN EDELSTEIN/COURTESY SEATTLE MUNICIPAL ARCHIVES PHOTOGRAPH COLLECTION.

- 103 Mirror**, Doug Aiken, 2013. Custom software editor that displays responsive video. *Seattle Art Museum Collection.* SEATTLE ART MUSEUM FAÇADE.

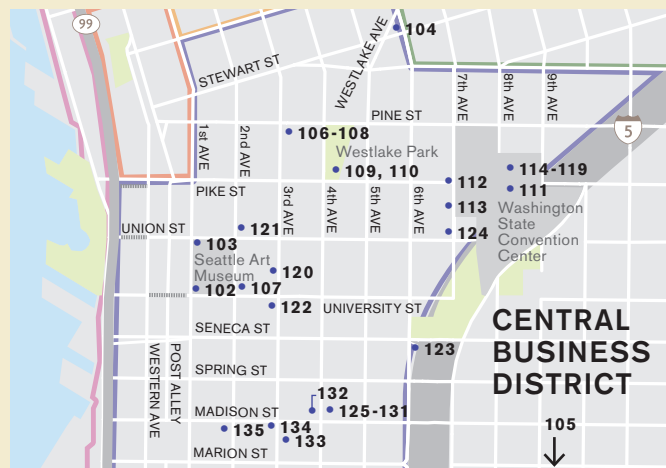
- 104 Governor John Harte McGraw**, Richard Brooks, 1909. Bronze sculpture. MCGRAW PLACE, WESTLAKE AVE. AND STEWART STREET.

- 105 Eat, Drink, Be Merry**, Ries Niemi, 2007. Stainless steel sculpture. *Sound Transit Art Program Collection.* RE-SITED TO SOUND TRANSIT'S OPERATIONS AND MAINTENANCE FACILITY, AIRPORT WAY SOUTH AND SOUTH FOREST STREET.

WESTLAKE STATION

DOWNTOWN TRANSIT TUNNEL, UNDER PINE STREET BETWEEN THIRD AND SIXTH AVENUES. SELECTED ARTWORKS IN TRANSIT TUNNEL STATIONS.

- 106 Untitled Platform Murals**, Fay Jones, Gene Gentry McMahon, Roger Shimomura, 1990. Porcelain enamel murals. *King County Metro Collection.*
- 107 Untitled Platform Benches**, Jack Mackie, 1990. Sandblasted patterns in granite. *King County Metro Collection.*
- 108 Untitled Wall Tiles**, Vicki Scuri, 1990. Ceramic tile mural. *King County Metro Collection.*



CENTRAL BUSINESS DISTRICT (CONTINUED)

WESTLAKE PARK FOURTH AVENUE BETWEEN PIKE AND PINE STREETS.

- 109 Westlake Star Axis/Seven Hills**, Robert Maki, 1988. Granite sculpture.
- 110 Children's Art Tiles**, Local Schoolchildren, 1988. Bronze tiles. *Seattle Parks and Recreation Collection.*

WASHINGTON STATE CONVENTION CENTER

800 CONVENTION PLACE. SELECTED ARTWORKS AT LOCATION.

- 111 Meeting Place**, Jackie Ferrara, 1989. Steel tile with concrete and steel benches. *Washington State Art Collection.* CONVENTION CENTER, LEVEL 2.
- 112 Lebeg (slight movement in the air)**, Ann Gardner, 2001. Suspended sculpture with glass tile and terrazzo floor. *Washington State Art Collection.* INSIDE ENTRANCE AT SEVENTH AVE. AND PIKE STREET.
- 113 Maw-Matic**, C. Blake Haygood, 2003. Exit door/transom glass inserts. *Washington State Convention Center Collection.* OUTSIDE ALONG SEVENTH AVE.
- 114 The Boxers**, Paul Marioni, 1980. Cast glass panels. LEVEL 2 NORTH.
- 115 Games**, Jacob Lawrence, 2011. Porcelain enamel on steel. *King County Public Art Collection (4Culture).* THIRD FLOOR MEZZANINE, WEST WALL.
- 116 "A" Procession**, Patty Warashina, 1986. Ceramic sculpture. LEVEL 2 NORTH.

- 117 Selections from the Truism, Living and Survival Series**, Jenny Holzer, 1989. Electronic message boards. *Washington State Art Collection.* LEVEL 2 SOUTH.
- 118 Untitled (Three Stained Glass Windows)**, Max Ingrand, 1963. Stained glass panels. LEVEL 4 SOUTH.
- 119 Seattle George Monument**, Buster Simpson, 1989. Aluminum, painted steel and concrete sculpture with vegetation. *Washington State Art Collection.* LEVEL 4 PLAZA.



PHOTO: BUSTER SIMPSON.

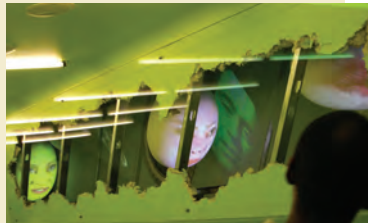


PHOTO: TONY OURSLER.

AROUND BENAROYA HALL 200 UNIVERSITY STREET.

- 120 Skytones**, Anna Valentina Murch, 1998. Lighting installation. EAST LOBBY.
- 121 The Garden of Remembrance**, Robert Murase, 1998. Plaza with stone and landscaping. *Benaroya Hall Collection.* WEST PLAZA.
- 122 Pendulum Clock**, Heather Ramsay, 1990. Steel and copper clock. *King County Metro Collection.* THIRD AVE. AND UNIVERSITY STREET.

ALONG SIXTH & SEVENTH AVENUES



PHOTO: AMY LOUISE HERNDON.

SEATTLE PUBLIC LIBRARY

CENTRAL LIBRARY, 1000 FOURTH AVE.

- 125 Fountain of Wisdom**, George Tsutakawa, 1960. Bronze fountain. OUTSIDE FOURTH AVE. ENTRANCE.
- 126 Babe, The Phoenix Fairy, and The Magic Grove**, Mandy Greer, 2005–2006. Papier mâché and fabric sculptures. FAYE G. ALLEN CHILDREN'S CENTER, LEVEL 1.
- 127 Literacy/ESL/World Languages Floor**, Ann Hamilton, 2004. Tongue-and-groove maple floor. LEVEL 1.
- 128 Braincast**, Tony Oursler, 2004. Video projectors and painted foam installation. ON ESCALATORS BETWEEN LEVELS 3 AND 5.

ALONG MADISON STREET

- 129 Making Visible the Invisible: What the Community is Reading**, George Legrady, 2005. Digital installation on six LCD screens. OVER REFERENCE DESK, LEVEL 5.
- 130 Of Memory**, Lynne Yamamoto, 2007. Polyester resin and fiberglass. SEATING AREA NEAR SEATTLE COLLECTION, LEVEL 10.
- 131 Astronomy by Day (and Other Oxymorons)**, Gary Hill, 2004. Video installation. LEVEL 10 VIEWPOINT INTO ATRIUM.
- 132 Three Piece Sculpture #3: Vertebrae**, Henry Moore, 1968. Bronze sculpture. *Seattle Art Museum Collection.* FOURTH AVE. AND MADISON STREET.
- 133 Seattle Financial Center**, James Carpenter, 2002. Suspended, acid-etched, colored dichroic glass on façade. *TIAA-CREF Collection.* THIRD AVE. LOBBY, 925 FOURTH AVE.
- 134 Seattle Tulip**, Tom Wesselmann, 1989. Painted steel sculpture. *999 Third Avenue REIT Collection.* THIRD AVE. AND MADISON STREET.
- 135 Landscape of Time**, Isamu Noguchi, 1975. Pink granite sculpture. *U.S. General Services Administration Collection.* SECOND AVE., BETWEEN MADISON AND MARION STREETS.

- 123 Naramore Fountain**, George Tsutakawa, 1967. Bronze and concrete fountain. SIXTH AVE. AND SENECA STREET.

- 124 The Urban Garden**, Ginny Ruffner, 2011. Bronze, metal and water. *Seattle Sheraton Hotel Collection.* SEVENTH AVE. AND UNION STREET.



PHOTO: SPIKE MAFFORD.

PIONEER SQUARE (CONTINUED)

KING COUNTY JAIL 500 FIFTH AVE.

- 148 Jail House Garden**, Martha Schwartz, 1987. Tile and concrete plaza. *King County Public Art Collection (4Culture)*. NORTH PLAZA.
- 149 Torus Torum**, Benson Shaw, 1984. Mixed media relief. *King County Public Art Collection (4Culture)*. SOUTH PLAZA.

KING COUNTY ADMINISTRATION BUILDING 500 FOURTH AVE.

- 150 Rhododendrons**, Harold Balazs, 1976. Porcelain enamel mural. *King County Public Art Collection (4Culture)*. FOURTH AVE. ENTRANCE.
- 151 Untitled #625**, Robert Sperry, 1985. Ceramic tile mural. *King County Public Art Collection (4Culture)*. FOURTH AVE. LOBBY.
- 152 Lunar Promenade**, Alden Mason, 1989. Acrylic on canvas. *King County Public Art Collection (4Culture)*. FOURTH AVE. LOBBY.
- 153 Sandworm**, George Tsutakawa, 1985. Steel sculpture. *King County Public Art Collection (4Culture)*. FIFTH AVE. ENTRANCE.

MARTIN LUTHER KING JR. COUNTY COURTHOUSE

516 THIRD AVE.

- 154 Truth Crushed to the Earth Will Rise Again**, Linda Beaumont, 2005. Terrazzo, marble and cast glass floor. *King County Public Art Collection (4Culture)*. FIRST FLOOR LOBBY.
- 155 From these Hills, from these Waters**, Douglas Cooper, 2005. Charcoal and graphite on paper on panel. *King County Public Art Collection (4Culture)*. FIRST FLOOR LOBBY.
- 156 Standing Tall**, Linda Beaumont, 2010. Light; hand-painted, etched and photo laminated glass; and steel. *King County Public Art Collection (4Culture)*. SECOND FLOOR ELEVATOR LOBBY.

THE CHINOOK BUILDING 401 FIFTH AVE.

- 157 Confluences**, Anna Valentina Murch, 2007. Painted steel ceiling installation. *King County Public Art Collection (4Culture)*. FIFTH AVE. ENTRANCE.
- 158 Brewing Storm, Pacific Coast Trail and Stand of Firs, Cumberland**, Glenn Rudolph, 2007. Etched stone mural. *King County Public Art Collection (4Culture)*. NORTH SIDE OF BUILDING EXTERIOR.
- 159 Longacres, Kent**, Glenn Rudolph, 2007. Etched stone mural. *King County Public Art Collection (4Culture)*. SOUTH SIDE OF BUILDING EXTERIOR.
- 160 Rotations**, Anna Valentina Murch, 2009. Steel and light. *King County Public Art Collection (4Culture)*. LOBBY, NORTH WALL.

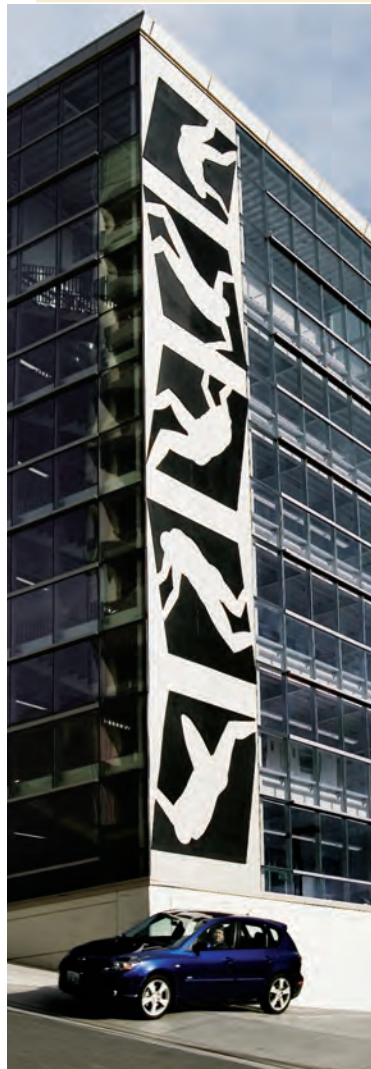


PHOTO: SPIKE MAFFORD.

ALONG FIFTH & SIXTH AVENUES

- 161 Tumbling Figure: 5 Stages**, Michael Spafford, 1979. Wall-mounted epoxy and aluminium. *King County Public Art Collection (4Culture)*. SIXTH AVE. AND JEFFERSON STREET.

- 162 Songbird**, John Henry, 2012. Steel and paint. *Collection of Martin Selig Real Estate*. FIFTH AVE. AND TERRACE STREET.

AROUND PIONEER SQUARE AND ALONG YESLER WAY

- 163 City Light, City Bright**, Nancy Blum, 2001. Cast iron utility cover. *Southeast corner of intersection at Fourth Ave. and James Street*.

Other utility covers by Betsy Best-Spadaro, Garth Edwards, Nathan Jackson, Anne Knight, Barbara Earl Thomas, 1975–2002. Cast iron utility covers. *Various locations throughout downtown*.

- 164 Fortson Square**, Elizabeth Conner, Cliff Willwert and Brian Goldbloom, 2001. Sited sculptural installation with recycled architectural artifacts, cast objects and granite sculpture. *Second Ave. and Yesler Way*.

- 165 Prefontaine Fountain**, Carl F. Gould, 1926. Granite and blue tile basin. *Third Ave. and Yesler Way*.

- 166 Pioneer Square (First Hill Streetcar)**, Claudia Fitch, 2013. Painted steel “beads” on streetcar poles. *South Jackson Street Streetcar Platform at Occidental and Second Ave. South*.

PIONEER SQUARE (CONTINUED)

PIONEER PLACE PARK FIRST AVE. SOUTH AND YESLER WAY.

- 167 Seattle Totem Pole**, Charles Brown, William Brown, James Starfish, Robert Harris, William Andrews, James Andrews, 1940. Polychrome-carved Alaskan red cedar pole.
- 168 Pergola**, Julian Everett, 1909. Cast iron and glass structure. *Seattle Parks and Recreation Collection.*
- 169 Chief Seattle Fountain**, James Wehn, 1909. Bronze bust and cast iron basin.
- 170 Day/Night**, Hachivi Edgar Heap of Birds, 1991. Porcelain enamel and cedar panels.

AROUND OCCIDENTAL SQUARE OCCIDENTAL AVE. SOUTH & SOUTH MAIN STREET.

- 171 Anawog**, Jan Evans, 1978. Painted steel sculpture. **SECOND AVE. AND SOUTH WASHINGTON STREET.**
- 172 Seattle Fallen Firefighters Memorial**, Hai Ying Wu, 1995. Cast bronze and granite sculpture. *Seattle Bravest Charity.* **OCCIDENTAL SQUARE.**
- 173 Killer Whale, Bear, Tsonqua, Sun and Raven**, Duane Pasco, 1971. Carved cedar sculptures. **OCCIDENTAL SQUARE.**



PHOTO: COURTESY DUANE PASCO.

SEATTLE FIRE DEPARTMENT HEADQUARTERS 301 SECOND AVE. S.

- 174 Firefighter Silhouette**, Tom Askman, 1987. Bronze and zinc cut-out sculptures. **BUILDING EXTERIOR.**
- 175 Firefighters' Memorial**, Ellen Ziegler, 1987. Colored terrazzo and brass floor. **LOBBY.**

FIRE STATION 10 400 SOUTH WASHINGTON STREET.

- 176 Call and Response**, Stuart Nakamura, 2008. Boulder, inlaid pavers and metal screen. **FOURTH AVE. SOUTH AND SOUTH WASHINGTON STREET.**
- 177 Sentinels**, Gloria Bornstein, 2008. Steel sculptures. **ALONG SOUTH WASHINGTON STREET.**
- 178 bamboo, luminous**, Nancy Chew and Jacqueline Metz, 2008. Resin and light sculpture. **ALONG FIFTH AVE. SOUTH.**

KING STREET CENTER

201 SOUTH JACKSON STREET.

- 179 The Plaza at King Street Center**, Jack Mackie with NBBJ, Hewitt Architects, 1999. Concrete and steel plaza with landscaping. *King County Public Art Collection (4Culture).* **SOUTHEAST CORNER OF BUILDING.**
- 180 Earth, Wind and Water**, Maya Radoczy, 1999. Kiln-cast glass lighting. *King County Public Art Collection (4Culture).* **BUILDING INTERIOR.**



PHOTO: YAM BRAND.

- 181 Rain Forest Gates**, Jean Whitesavage and Nick Lyle, 1999. Hand-forged and painted steel gates. *King County Public Art Collection (4Culture).* **FRONT GATES.**

KING STREET STATION 303 SOUTH JACKSON STREET.

- 182 Windvanes**, Ned Kahn, 2000. Steel and aluminum columns. *Sound Transit Art Program Collection.* **STATION CANOPY SUPPORT COLUMNS.**
- 183 Moto**, Jerry Mayer, 2004. Aluminum reflective signage. *Sound Transit Art Program Collection.* **ON COLUMNS OPPOSITE THE COMMUTER RAIL PLATFORM.**

ALONG SOUTH JACKSON STREET

- 184 4 (Where shall I go ahead?)**, Bill Will, 2001. Sandblasted granite seating. **UNION STATION SQUARE, THIRD AVE. SOUTH AND SOUTH JACKSON STREET.**

CHINATOWN/ INTERNATIONAL DISTRICT (CID)

ALONG SOUTH JACKSON STREET

- 185 Untitled Dragons on Lampposts**, Meng Huang and Heather Presler, 2002. Painted fiberglass sculptures. *Chinatown/International District Business Improvement Area Collection*. LIGHTPOLES ALONG FIFTH AVE., SOUTH DEARBORN STREET AND SOUTH JACKSON STREET.
- 186 Historic Chinatown Gate (Chong Wa Gate)**, MulvanyG2 Architecture and Paul Wu, 2008. Ceramic tile and steel gate. *Historic Chinatown Gate Foundation and Chinatown/International District Business Improvement Area*. FIFTH AVE. SOUTH AND SOUTH KING STREET.
- 187 Heaven, Man and Earth**, George Tsutakawa, 1979. Bronze sculpture. MAYNARD AVE. SOUTH AND SOUTH JACKSON STREET.
- 188 Jackson Street Colonnade**, Fire Cruxent Studios, 1998. Enamel paint on concrete. *Chinatown/International District Business Improvement Area Collection*. EIGHTH AVE. SOUTH AND SOUTH KING STREET.
- 189 Japantown/ID (First Hill Streetcar)**, Claudia Fitch, 2013. Painted steel “bead” on streetcar poles. SOUTH JACKSON STREET BETWEEN FIFTH AND SIXTH AVES. SOUTH.
- 190 Chinatown/ID (First Hill Streetcar)**, Claudia Fitch, 2013. Painted steel “beads” on streetcar poles. SOUTH JACKSON STREET BETWEEN MAYNARD AND SEVENTH AVE. SOUTH.



ALONG EIGHTH AVENUE SOUTH

- 191 Untitled Walkway and Benches**, Norie Sato and Stuart Nakamura, 1998. Stone walkway and benches. *Seattle Chinatown/International District Preservation & Development Authority Collection*. EIGHTH AVE. SOUTH AND SOUTH LANE STREET.
- 192 Wellspring**, Rene Yung, 2005. Mixed-media installation with teacups. *INTERNATIONAL DISTRICT/CHINATOWN BRANCH, THE SEATTLE PUBLIC LIBRARY*, 713 EIGHTH AVE. SOUTH.
- 193 Thread**, Nickolus Meisel, 2004. Polyethylene panel and mirrored dome installation. *INTERNATIONAL DISTRICT/CHINATOWN COMMUNITY CENTER*, 719 EIGHTH AVE. SOUTH.



PHOTO: RICHARD NICOL.

WELLER STREET PEDESTRIAN BRIDGE

- 194 Bridge Between Cultures**, Fernanda D'Agostino and Valerie Otani, 1999. Mixed-media bridge installation. *4Culture and King County Metro Transit Division Collection*. WELLER STREET AT FOURTH AVE. SOUTH.



PHOTO: COURTESY WASHINGTON STATE PUBLIC STADIUM AUTHORITY.

CENTURY LINK FIELD

800 OCCIDENTAL AVE. SOUTH.

SELECTED ARTWORKS AT LOCATION.

- 195 Earth Dialogue**, Bob Haozous, 2002. Urethane enamel on steel installation. *Washington State Public Stadium Authority Collection.* NORTH TOWER.
- 196 lumen**, Beliz Brother, 2002. Airport runway lights in concrete. *Washington State Public Stadium Authority Collection.* NORTH PLAZA.
- 197 Written into the Earth**, Susan Point, 2002. Cast bronze inlay in sidewalk and cast iron tree grates. *Washington State Public Stadium Authority Collection.* BASE OF NORTH TOWER AND TREE GRATES ADJACENT TO STADIUM.

- 198 Colossal Heads**, Claudia Fitch, 2002. Urethane enamel, paint and fiberglass over polystyrene foam sculpture. *Washington State Public Stadium Authority Collection.* WEST COLONNADE ALONG OCCIDENTAL AVE. SOUTH.
- 199 rockshadow**, Peter Shelton, 2002. Granite boulder and cast bronze sculpture. *Washington State Public Stadium Authority Collection.* WEST PLAZA ALONG OCCIDENTAL AVE. SOUTH.
- 200 Occidental Suite**, Cheryl dos Remédios, 2006. Digitally printed murals. *Washington State Public Stadium Authority Collection.* ALONG OCCIDENTAL AVE. SOUTH.

SAFECO FIELD 1250 FIRST AVE. S. SELECTED ARTWORKS AT LOCATION.

- 201 Batter's Fence**, Ries Niemi, 1998. Stainless steel fence. *Washington State Public Facilities District Collection.* LEFT FIELD, CENTER FIELD AND RIGHT FIELD GATES.
- 202 The MITT**, Gerard Tsutakawa, 1999. Bronze sculpture. *Washington State Public Facilities District Collection.* LEFT FIELD GATE.

- 203 The Tempest**, Linda Beaumont, Stuart Keeler, Michael Machnic, 1999. Suspended sculpture made of resin, brushed aluminum, terrazzo, glass and steel bats. *Washington State Public Facilities District Collection.* HOME PLATE GATE AND MAIN CONCOURSE.

ATLANTIC CENTRAL BASE SIXTH AVE. SOUTH AND SOUTH ROYAL BROUGHAM WAY.

- 204 Motion Song**, Julie Berger, 2004. Powder-coated steel bridge fencing. *King County Public Art Collection (4Culture).* PEDESTRIAN BRIDGE.

- 206 Newsreaders**, Christian Moeller, 2006. Plastic fencing. *King County Public Art Collection (4Culture).* PERIMETER FENCE AROUND FACILITY.

- 205 Bloom**, Susan Zoccola, 2004. Wall-mounted concrete, aluminum, fiberglass, steel and light. *King County Public Art Collection (4Culture).* PARKING GARAGE FAÇADE.

- 207 Round and Round**, Norie Sato, 2012. Terrazzo, stainless steel, aluminum, brass and LED lighting. *King County Public Art Collection (4Culture).* 1500 SIXTH AVE. SOUTH, OPERATIONS FACILITY FLOOR, EXTERIOR GREEN SCREEN.



PHOTO: COURTESY SEATTLE MARINERS.

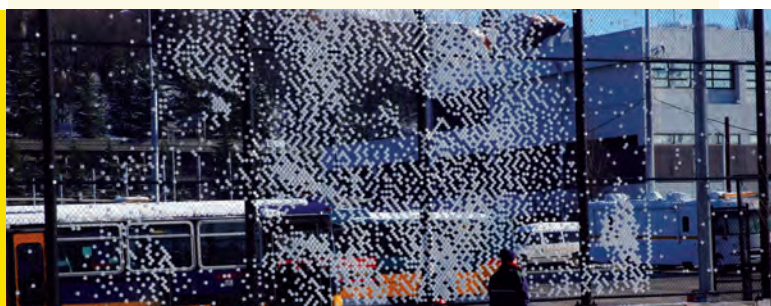
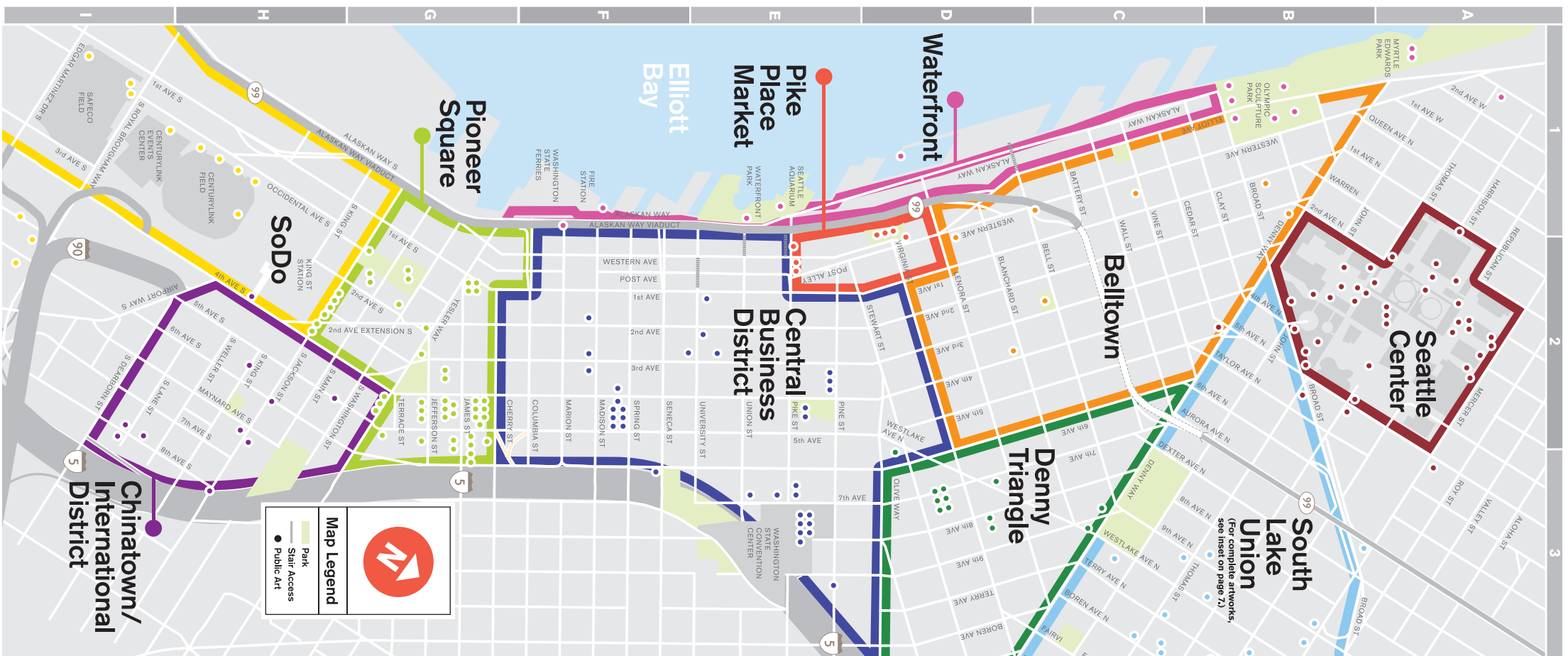


PHOTO: YAM BRAND.

Art Listing

- p1 Seattle Center**
 - 1 Nson for the Bagley Wright Theatre
 - 2 Fountain of the Northwest
 - 3 Barber
 - 4 Encircled Stream
 - 5 Cairn from the Lang Fountain
 - 6 Untitled
 - 7 Fu Dogs
 - 8 Dreaming in Color
 - 9 An Equal and Opposite Reaction
 - 10 Fountain of Creation
 - 11 Play Ray Plaza
 - 12 Hydrails
 - 13 Acrobat Constellation
 - 14 Focus
 - 15 Pool
 - 16 Fountain of Sesevagi Kobs Bell
 - 17 Neoatoms
 - 18 Neoatoms
 - 19 Twine and Branch, Biography of a Branch
 - 20 Bird Song Listening Station
 - 21 Sane Bloom
 - 22 Untitled artworks
 - 23 Neoatoms Children's Garden
 - 24 Seattle Mural
- p12 Pike Place**
 - 95 Untitled Toem Pole Farmer's Pole
 - 96 Farmer's Pole
 - 97 Untitled Fence
 - 98 Tree of Life
 - 99 Radel
 - 100 Shortcut
 - 101 Song of the Earth
- p13 Business Dist.**
 - 102 Hammering Man
 - 103 Mirror
 - 104 Governor John Harle McGraw
 - 105 Ear, Drink, Be Merry
 - 106 Untitled Platform Mirais
 - 107 Untitled Platform Benches
 - 108 Untitled Wall Tiles
 - 109 Westlake Star Axis/Seven Hills
 - 110 Children's Art Tiles
 - 111 Meeting Place
 - 112 Lebeg (slight movement in the air)
 - 113 Maw-Matic
 - 114 The Boxes
 - 115 Games
 - 116 "A" Procession
 - 117 Selections from the Truism, Living and Survival Series
 - 118 Untitled (Three Stained Glass Windows)
 - 119 Seattle George Monument
 - 120 Skyrons
 - 121 The Garden of Remembrance
 - 122 Pendulum Clock
 - 123 Naramore Fountain
- p16 Pioneer Square**
 - 124 The Urban Garden
 - 125 Fountain of Wisdom Gate, The Phoenix Fairy, and The Magic Grove
 - 127 Literacy/ESI/World Languages Floor
 - 128 Brinacast
 - 129 Making Visible the Invisible: What the Community is Reading
 - 130 OF Memory
 - 131 Astronomy by Day (and Other Oxymorons)
 - 132 Three Piece Sculpture #3: Veretpae
 - 133 Seattle Financial Center
 - 134 Sculpture of Time
 - 135 Landcape of Time
- p10 Belltown**
 - 75 Second Avenue Project
 - 76 First Avenue Project
 - 77 Beckoning Cistern
 - 78 Wave Ravé Cave
- p20 CID**
 - 185 Untitled Dragons
- p22 SODO**
 - 186 Historic Chinatown Gate (Chong Wa Gate)
 - 187 Heaven, Man and Earth
 - 188 Jackson Street Colonade
 - 189 Japanown/ID First Hill Streetcar
 - 190 Chinatown/ID First Hill Streetcar
 - 191 Untitled Walkway and Benches
 - 192 Wellspring
 - 193 Thread
 - 194 Bridge Between Cultures
- p20 CID**
 - 163 City Light, City Bright
 - 164 Fortson Square
 - 165 Preonarine Fountain
 - 166 Pioneer Square First Hill Streetcar
 - 167 Seattle Toem Pole
 - 168 Pergola
 - 169 Chief Seattle Fountain
 - 170 Day/Night
 - 171 Anawog
 - 172 Seattle Fallen Firefighters Memorial
 - 173 Killer Whale, Bear, Tsongqua, Sun and Raven
 - 174 Firefighter Silhouette
 - 175 Firefighters Memorial
 - 176 Call and Response
 - 177 Sentinels
 - 178 bamboo, luminous
 - 179 The Plaza at King Street Center
 - 180 Earth, Wind and Water
 - 181 Rain Forest Gates
 - 182 Windwanes
 - 183 Moo
 - 184 4 (Where shall I go ahead?)
- p16 Pioneer Square**
 - 195 Earth Dialogue
 - 196 Iumen
 - 197 Written Into the Earth
 - 198 Colossal Heads
 - 199 rockshadow
 - 200 Occidental Suite
 - 201 Barter's Fence
 - 202 The MITT
 - 203 The Tempest
 - 204 Motion Song
 - 205 Bloom
 - 206 Newscasters
 - 207 Round and Round
- p16 Pioneer Square**
 - 129 Making Visible the Invisible: What the Community is Reading
 - 130 OF Memory
 - 131 Astronomy by Day (and Other Oxymorons)
 - 132 Three Piece Sculpture #3: Veretpae
 - 133 Seattle Financial Center
 - 134 Sculpture of Time
 - 135 Landcape of Time
- p16 Pioneer Square**
 - 136 Codes & Protocols
 - 137 Points of View
 - 138 Witness and Dilemma, Levels, Weights and Measures
 - 139 Seattle Justice Center Elevator Lobbies
 - 140 Day and Night
 - 141 Blue Glass Passage
 - 142 continuum
- p16 Pioneer Square**
 - 143 return
 - 144 Evolving Wing and the Cravity of Presence
 - 145 Illumine
 - 146 Water Weaving Light Cycle
 - 147 Cultural Heritage and Sister City Collection
 - 148 Jail House Garden
 - 149 Torus Torum
 - 150 Rhododendrons
 - 151 Untitled #625
 - 152 Lunar Promenade
 - 153 Sandworm
 - 154 Truth Crushed to the Earth Will Rise Again
 - 155 From these Hills, from these Waters
 - 156 Standing Tall
 - 157 Confluences
 - 158 Brewing Storm, Pacific Coast Trail and Stand of Firs
 - 159 Cumberland
 - 160 Rotations
 - 161 Tumbling Figure: 5 Stages
 - 162 Songbird
- p16 Pioneer Square**
 - 195 Earth Dialogue
 - 196 Iumen
 - 197 Written Into the Earth
 - 198 Colossal Heads
 - 199 rockshadow
 - 200 Occidental Suite
 - 201 Barter's Fence
 - 202 The MITT
 - 203 The Tempest
 - 204 Motion Song
 - 205 Bloom
 - 206 Newscasters
 - 207 Round and Round



MAP BASE COURTESY OF VISIT SEATTLE.