



Executive Summary

AGE FRIENDLY SEATTLE

Making Seattle a great place to grow up AND grow old

On March 31, 2017, the City of Seattle adopted Resolution 31739 to become a more age-friendly city under criteria established by the World Health Organization (WHO) and the AARP Network of Age-Friendly Communities. Compelling data in “An Aging World: 2015” by the U.S. Census documented that the global population age 60 and older is expected to rise dramatically. In fact, the U.S. population aged 65 and over doubled from seven percent to 14 percent in the 69 years from 1944 to 2013 and will increase an additional seven percent to total 21 percent of the overall U.S. population by 2033.

This age wave will also impact Seattle and the region. A recent report commissioned by the City of Seattle, *Moving Toward Age-Friendly Housing in King County*, indicates that the percentage of King County adults aged 55 years and older will rise from 30 percent currently to 47 percent of households in 2030. This trend will outpace the supply of accessible and affordable housing in King County.

In recognition of these trends, the City committed to becoming more age-friendly using the WHO’s 8 Domains of Livability to make Seattle a great place for people to grow up and grow old.

This commitment was strengthened in Mayor Jenny Durkan’s vision for Seattle, as outlined in her 2018 State of the City Speech, which called for a more affordable, effective, safe, and vibrant city for the future. Under her leadership, and with support from our City Council and community partners, the City has taken the preliminary steps outlined in the resolution to build an accessible and affordable city for Seattleites of all ages, resulting in the Age Friendly Seattle Action Plan for 2018–2021.

More than 2,000 people, including older immigrants, representatives from community-based organizations and City departments, and community leaders participated in creation of the plan. This extensive engagement accelerated the delivery of age-friendly services, programs, and capital projects outlined in the Age Friendly Seattle Action Plan.

www.seattle.gov/agefriendly

Action Plan

Mayor Jenny Durkan’s and the City Council’s shared focus on progressive values are reflected in the Age Friendly Seattle Action Plan, specifically through actions to reduce race and social inequality, address the needs of refugees and immigrants, and more broadly accommodate the needs of the City’s LGBTQ population—the second-largest in the U.S. with 12.9 percent of the community identifying as LGBTQ+. Early 2017 actions included community equity forums to explore the unique vulnerabilities of LGBTQ elders and those unique to women.

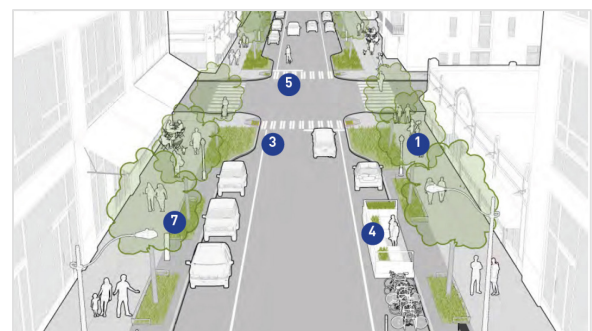
The Age Friendly Seattle Action Plan was developed with and will be reviewed annually through the racial equity lens provided by Seattle’s Race and Social Justice Initiative.

The Age Friendly Seattle Action Plan identifies strategies for improvement in each of “the eight domains of livability,” a framework developed by the World Health Organization to address the environmental, economic, and social factors influencing the health and well-being of older adults.



Housing

Age Friendly Seattle is collaborating with the Office of Housing (OH), Office of Planning and Community Development (OPCD), and Department of Neighborhoods (DON) to implement affordable and accessible housing strategies for older adults through improved access to programs; new and expanded initiatives based on the recommendations in *Moving Toward Age-Friendly Housing in King County*; increased public awareness and utilization of County and City affordability programs in partnership with the King County’s Assessor’s Office; and promotion of state legislation to increase resources for housing preservation and production and expand access to property tax savings.



Transportation

Working with the Seattle Department of Transportation (SDOT) and DON, Age Friendly Seattle will help people of all ages and abilities connect in their neighborhoods and get where they need to go by promoting best practices listed in SDOT’s *Street Design Toolkit for Age-Friendly Neighborhoods*, implementing a city bench program, and promoting age-friendly and affordable transportation options.



Outdoor Spaces & Buildings

The City will advance Universal Design of the physical environment so that buildings and outdoor spaces are usable by all people, to the greatest extent possible, without the need for adaptation or specialized design.



Respect & Social Inclusion

Age Friendly Seattle will develop trainings for City staff, including emergency responders, to ensure competency when communicating with and serving older adults, individuals with disabilities, and people with memory loss; and work with departments and the community to strengthen understanding of the unique needs of LGBTQ elders, ensuring cultural and contextual sensitivity and compassionate caregiving.



Social Participation

Age Friendly Seattle will explore creation and expansion of programs that reduce social isolation and provide more opportunities for older adults and adults with disabilities to engage in the life of their neighborhoods and communities, including programming for immigrant and refugee elders. A new interactive discount directory for older adults and adults with disabilities will promote affordable community activities.



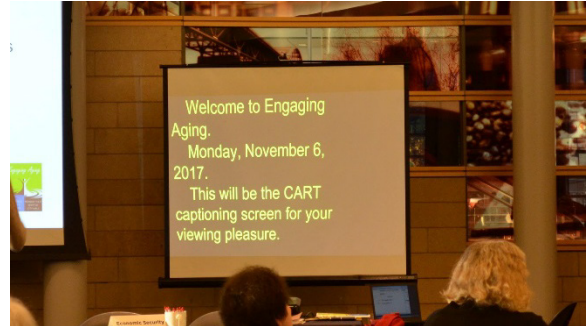
Civic Participation & Employment

The Office of Economic Development (OED) will develop and disseminate business tools that help assess age-friendliness and encourage improvements that benefit older customers, mature workers, and individuals with disabilities; partner with employment resource programs to better serve the needs of older jobseekers; work with Seattle Department of Human Resources and the business community to encourage hiring of mature workers; and ensure that every City board and commission includes at least one older adult, individual with a disability and/or individual with memory loss in its membership.



Community & Health Services

Age Friendly Seattle will collaborate with housing providers, senior centers, and The Seattle Channel to develop or expand programming that makes it easier to access services. Age Friendly Seattle will also engage with health care systems to increase identification of social needs and utilization of community resources to support older patients in managing their health and health care; disseminate information about elder abuse, fraud, neglect, and exploitation; and support access to caregiver support services.



Communication & Information

To support access to City programs and services for all, Age Friendly Seattle will work with the ADA Title II compliance program to ensure that City employees receive the training they need to create accessible documents and other materials and respond to requests for accommodations—especially critical for disaster preparedness, response, and recovery—building both communication competency and resiliency.



The City of Seattle encourages everyone to participate in its programs and activities. For disability accommodations, materials in alternate formats, or accessibility information, call Age Friendly Seattle at 206-684-0660 (Relay 711), e-mail agefriendly@seattle.gov, or visit www.seattle.gov/agefriendly at your earliest opportunity.