

# Public Field Programs

---

CEDAR RIVER WATERSHED

APRIL 2017 - APRIL 2018

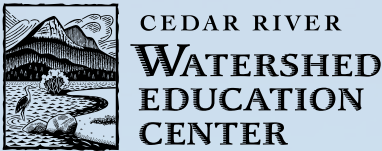


# WELCOME TO SEATTLE'S WATERSHEDS

The Cedar River Watershed Education Center is only 35 miles east of Seattle, yet it feels a world away. The Center is tucked into the Cascade foothills, on the shores of Rattlesnake Lake, facing Rattlesnake Ledge. Owned and operated by Seattle Public Utilities, it is the gateway to the Cedar River Municipal Watershed.

Since 1901, the Cedar River Watershed has been Seattle's primary source of water. In 1964, the South Fork of the Tolt River was tapped to meet the needs of a growing population. Today, more than 1.4 million people get their water from these combined sources.

Even though unsupervised public access is strictly prohibited, the City offers affordable guided adventures for you to experience your water at its source.



17905 Cedar Falls Rd SE  
North Bend, WA 98045

206.733.9421 | 425.831.6780

[CRWprograms@seattle.gov](mailto:CRWprograms@seattle.gov)  
[www.seattle.gov/util/crwec](http://www.seattle.gov/util/crwec)

### CENTER EXHIBIT HOURS

**April – October**  
Tuesday – Sunday  
10AM to 5PM

**November – March**  
Tuesday – Sunday  
10AM to 4PM

*Closed Mondays & City Holidays*

### HERITAGE LIBRARY HOURS

The library is open Sundays, 12-4 and by appointment.

### RATTLESNAKE LAKE HOURS

The Rattlesnake Lake Recreation Area is open 6am to dusk all year. Day-use only.

## NEWSLETTER

Read stories you won't find anywhere else. Published digitally 7 times each year.

### Sign-up here:

[www.seattle.gov/util/crwec](http://www.seattle.gov/util/crwec)

# SIGNATURE TOURS



### THE WATERSHED TOUR

The 2.5-hour tour includes driving through the historic townsite of Cedar Falls, walking across Masonry Dam, seeing Chester Morse Lake, and Cedar Falls waterfall. Along the way, your guide will share stories and pictures. Walking distances of 1/4 mile across uneven surfaces is necessary on this tour.

**DATES:** July 8 through September 3

**TIME:** 10:00 to 12:30

**AGES:** Adults, youth ages 10+

**COST:** \$10 adults; \$5 youth & seniors (55+)



### FAMILY WATERSHED TOUR

This 1-hour tour is popular with multi-generational families and geared toward curious minds with short attention spans. It includes a drive through the historic townsite of Cedar Falls and a visit to Cedar Falls waterfall.

**DATES:** July 8 through September 3

**TIME:** 2:00 to 3:00

**AGES:** All Ages

**COST:** \$5 per seat



### GROUP WATERSHED TOUR

Get a unique taste of the watershed with this tailor-made tour for organized groups of 9 or more.

**DATES:** Contact us for availability

**AGES:** Adults; organized groups only

**COST:** \$5 per person; free for government and educational institutions.



## CONTACT US >

17905 Cedar Falls Rd SE, North Bend, WA 98045

PHONE: 206.733.9421 | 425.831.6780

[www.seattle.gov/util/crwec](http://www.seattle.gov/util/crwec)

EMAIL: [CRWprograms@seattle.gov](mailto:CRWprograms@seattle.gov)

## SYMBOLS >

Bus Tour  
 Van Tour

Watershed-based  
 Center-based

Hiking Off-Trail  
 Free Special Event

Adults  
 Families



# NATURAL

# HISTORY



## QUIET WATER: WETLANDS OF THE WATERSHED

Journey into the watershed with Clay Antieau, Seattle Public Utilities scientist and local authority on Northwest native plants. Highlights of the day include Eagle Ridge Meadow, a 40-acre fen; 14 Lakes, a strange “kettle” wetland; and a forested bog. Participants must be able to hike 2 - 3 miles of moderate to strenuous intensity over rough terrain on and off trail.

**DATES:** May 20

**TIME:** 9:00 to 4:00

**AGES:** Adults

**COST:** \$15



## LICHENS: MYSTERIOUS FUNGI OF THE FOREST

Join Professor Katherine Glew, PhD, to learn about the fascinating lichens of the forest. After a short overview of lichens in the classroom, venture into the watershed to find them. The last part of the day will be spent identifying and studying specimens collected in the field.

**DATES:** June 11

**TIME:** 10:00 to 3:00

**AGES:** Adults

**COST:** \$20



## AMONG ANCIENTS: OLD GROWTH FORESTS

Enjoy a day in old growth forests with Clay Antieau, Seattle Public Utilities scientist and local authority on Northwest native plants. Hikes will include trips into some of the best lowland old growth, including the Lost Creek old growth and the ancient forests of Findley Lake. Participants must be able to hike 2 - 3 miles of moderate to strenuous intensity over rough terrain on and off trail.

**DATES:** August 5 or August 19

**TIME:** 9:00 to 4:00

**AGES:** Adults

**COST:** \$15



## ADVENTURES IN FOREST ECOLOGY

Spend the day with watershed ecologists Rolf Gersonde, PhD, and Bill Richards. They will help you discover the hidden connections in the forests and share how we restore biodiversity and habitat in young forests of the watershed. Explore differences in wildlife habitat and other ecosystem qualities between young and old forests in the Rex Basin. Participants must be able to hike 2 - 3 miles of moderate to strenuous intensity over rough terrain on and off trail.

**DATES:** September 16

**TIME:** 9:00 to 4:00

**AGES:** Adults

**COST:** \$15



## CONTACT US >

17905 Cedar Falls Rd SE, North Bend, WA 98045

PHONE: 206.733.9421 | 425.831.6780

[www.seattle.gov/util/crwecc](http://www.seattle.gov/util/crwecc)

EMAIL: [CRWprograms@seattle.gov](mailto:CRWprograms@seattle.gov)

## SYMBOLS >

Bus Tour  
 Van Tour

Watershed-based  
 Center-based

Hiking Off-Trail  
 Free Special Event

Adults  
 Families



# CULTURAL



## CONDUCTING THE RAIN DRUM SYMPHONY

This class allows musicians, composers, and electronics enthusiasts an opportunity to compose songs for Dan Corson's "Rain Drum Courtyard" at the Education Center. Day one will familiarize students with the art installation's method of programming in MIDI. Day two will focus on playing students' compositions and comparing and contrasting styles and methods.

**DATES:** June 3 and June 4

**TIME:** 6/3: 10:00 to 2:00, 6/4: 12:00 to 4:00

**AGES:** Adults, youth ages 14+

**COST:** \$25



## NW TIMBER COMMUNITY SONGS & STORIES

This Father's Day, enjoy local musical traditions performed by Snoqualmie Valley artist, Bob Antone, and guests. Connect to the past through songs about Pacific Northwest history and industry: old-time logging, railroad folklore, and maybe even tales of Bigfoot and other strange creatures of the Northwest woods.

**DATES:** June 18

**TIME:** 2:30 to 4:00

**AGES:** All Ages

**COST:** Free



## Did you know you can rent the Education Center for your special event?

The Education Center has three spaces available for meetings, retreats, weddings, parties, and other events. The Center's beautiful setting, mountain views, and inspirational landscape make it an exceptional place for your organization's next planning session, community event, or family get-together.

*See our website for details.*

# HISTORY



## RAILROAD HISTORY TREASURE TOUR

Take a trip back in time with Clay Antieau, Seattle Public Utilities scientist and watershed rail historian. This tour seeks out some of the remaining structures, grades, and legacies created when railroads were king. Participants must be able to hike about 1 mile over uneven terrain.

**DATES:** June 17

**TIME:** 9:00 to 2:00

**AGES:** Adults, Kids 10+

**COST:** \$15



## TWILIGHT TOWN TOUR: TAYLOR

Delve into the rich history of Taylor, a town that now lies hidden beneath the forests of the Cedar River Municipal Watershed. Taylor was world-famous for its clay products. A Seattle Public Utilities naturalist will guide you on this walking tour, revealing some of the stories that made Taylor so special. Walking on uneven terrain is required.

**Please Note:** Directions to the meeting location in Maple Valley will be given upon registration.

**DATES:** September 23 or October 14

**TIME:** 1:00 to 3:00

**AGES:** Adults, Kids 10+

**COST:** \$10



## TWILIGHT TOWN TOUR: CEDAR FALLS

Immerse yourself in the proud heritage that first brought municipal water and power to the people of Seattle. Founded in 1901, the City-owned town was a vibrant community for decades. See some of the original homes and streetlights that still remain. A Seattle Public Utilities naturalist will guide you on this walking tour where you will hear stories of those who lived and worked in Cedar Falls.

**DATES:** October 8 or October 22

**TIME:** 1:00 to 3:00

**AGES:** Adults, Kids 10+

**COST:** \$10



## CONTACT US >

17905 Cedar Falls Rd SE, North Bend, WA 98045

PHONE: 206.733.9421 | 425.831.6780

[www.seattle.gov/util/crwec](http://www.seattle.gov/util/crwec)

EMAIL: [CRWprograms@seattle.gov](mailto:CRWprograms@seattle.gov)

## SYMBOLS >

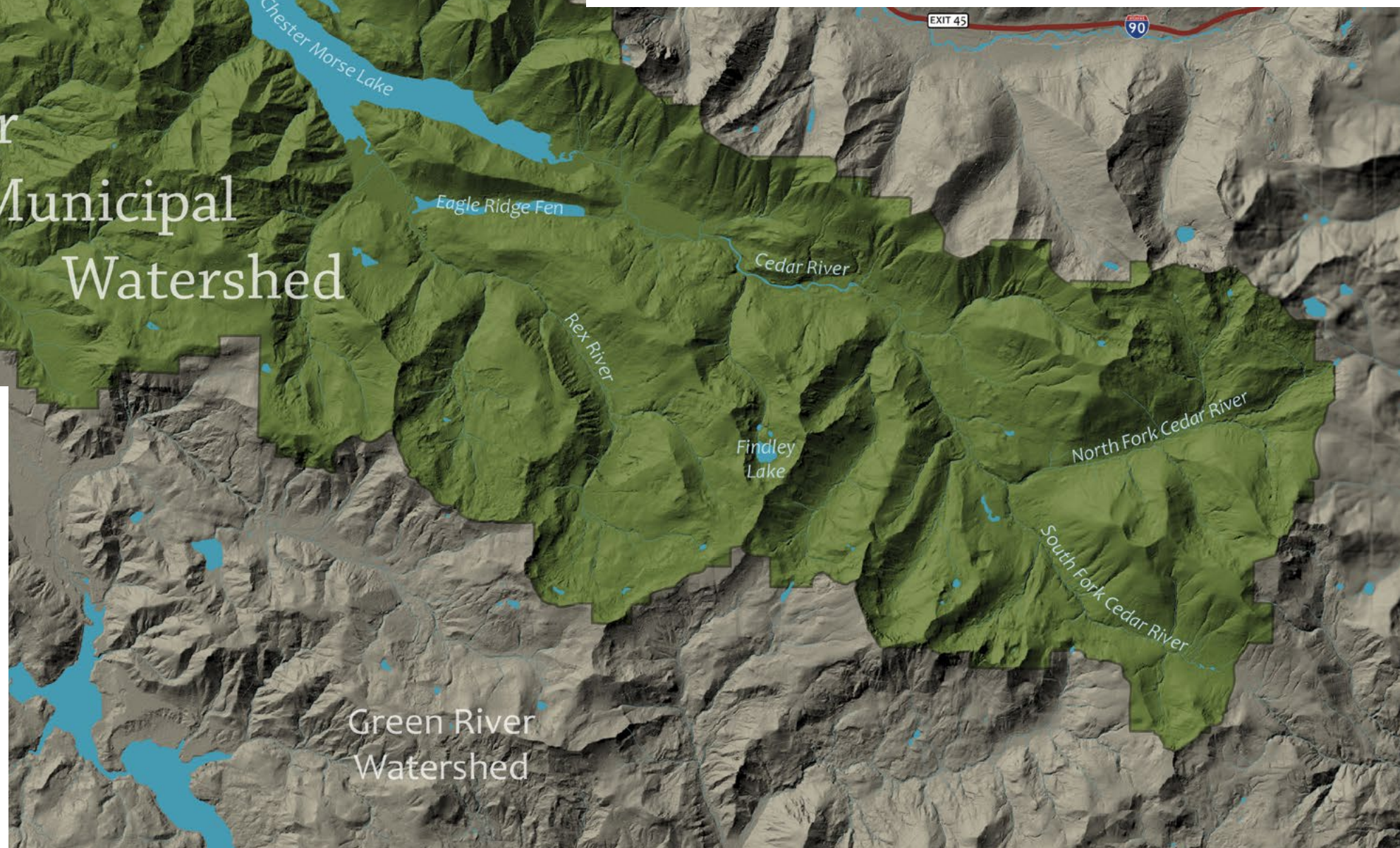
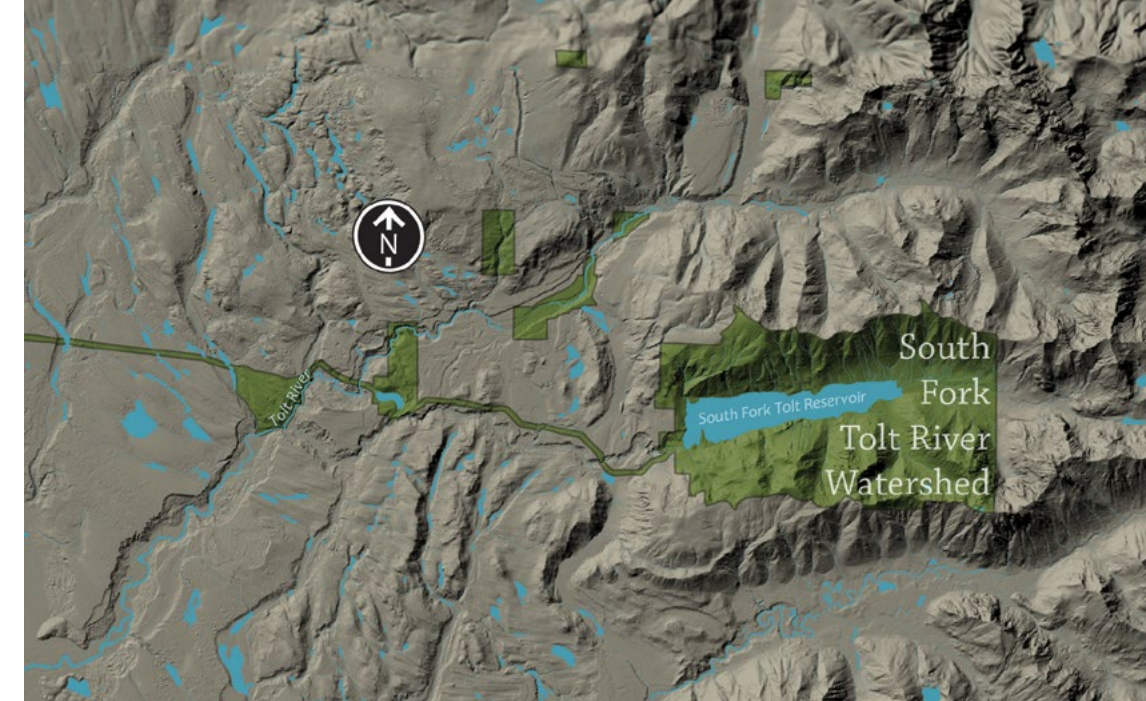
Bus Tour  
Van Tour

Watershed-based  
Center-based

Hiking Off-Trail  
Free Special Event

Adults  
Families






## THE LAND WHERE WATER GATHERS

The Cedar River Municipal Watershed is over 90,000 acres in size. The City of Seattle owns all of the land within its boundaries.


The South Fork Tolt Municipal Watershed is 12,500 acres. The City of Seattle owns 70% of the land. The remaining 30% is owned by the USDA Forest Service.

While the Watersheds are strictly off-limits to unsupervised public access, there are plenty of opportunities for people of all ages to experience the primary source of water for the region. The Cedar River Watershed Education Center is the gateway for understanding this legendary landscape.

 The Cedar River Watershed Education Center connects people to the source of Seattle's drinking water and its unique cultural and natural history, inspiring confidence, stewardship, and sustainability.

CONTACT US >

 17905 Cedar Falls Rd SE, North Bend, WA 98045

 PHONE: 206.733.9421 | 425.831.6780

 [www.seattle.gov/util/crvec](http://www.seattle.gov/util/crvec)

 EMAIL: [CRWprograms@seattle.gov](mailto:CRWprograms@seattle.gov)



# FAMILY



## MOTHER'S DAY

This relaxing day celebrates all the mothers in our lives, as well as in the watershed. Bring the entire family to enjoy tea, coffee, and snacks while strolling the grounds of the Education Center and savoring the spectacular views of Rattlesnake Ledge. Discover fun tidbits about moms – both human and wild – who have raised their families in the watershed.

**DATES:** May 14

**TIME:** 10:00 to 3:00

**AGES:** All Ages

**COST:** Free



## JUNIOR NATURALISTS

Hey kids, bring an adult to explore nature as a naturalist! We will listen like deer, rustle like raccoons, and bounce like bobcats. Be ready to walk 1.5 miles and dress for the weather as we discover signs of animals on land and in water.

**DATES:** July 26 or August 23

**TIME:** 9:30 to 11:30

**AGES:** 4 - 10 years (with an adult)

**COST:** \$5 per child



## Bring the entire family to see the watershed this summer!

Hop on the tour bus for a 1-hour trip behind the gates into the closed boundaries on the **Family Watershed Tour**. Popular with multi-generation families, this tour includes a drive through the historic Cedar Falls townsite and a stop at the Cedar Falls waterfall. It's bound to delight young and curious minds with short attention spans.

*See page 3 for details.*

# FRIENDLY



## CEDAR RIVER SALMON JOURNEY

See spawning salmon along the Cedar River this fall. At Landsburg, learn how some salmon are allowed to enter our drinking water. This is a rare opportunity you don't want to miss! **Please Note:** All viewing sites are along the Cedar River in the Renton and Maple Valley area.

**DATES:** Weekends in October

**TIME:** 11:00 to 4:00

**AGES:** All Ages

**COST:** Free



## WONDERING ABOUT WILDLIFE

Grab your family and friends for a day of wild delight, both inside and outside, at the Center. This free, hands-on event is packed with wildlife activities that will interest all ages. With so much to experience, bring a lunch and stay for the whole day. Open house event; no registration needed.

**DATES:** December 28

**TIME:** 10:00 to 3:00

**AGES:** All Ages

**COST:** Free



## WINTER WEEKENDS

Naturalist-led activities include stories, crafts, and hikes. Programs are available most Saturdays and Sundays, January through March 2018. *Registration for Winter Weekends opens December 1, 2017.*

**DATES:** January 6 through March 25, 2018

**TIME:** 1:30 to 3:30

**AGES:** All Ages

**COST:** Free



## CONTACT US >

17905 Cedar Falls Rd SE, North Bend, WA 98045

PHONE: 206.733.9421 | 425.831.6780

[www.seattle.gov/util/crwec](http://www.seattle.gov/util/crwec)

EMAIL: [CRWprograms@seattle.gov](mailto:CRWprograms@seattle.gov)

## SYMBOLS >

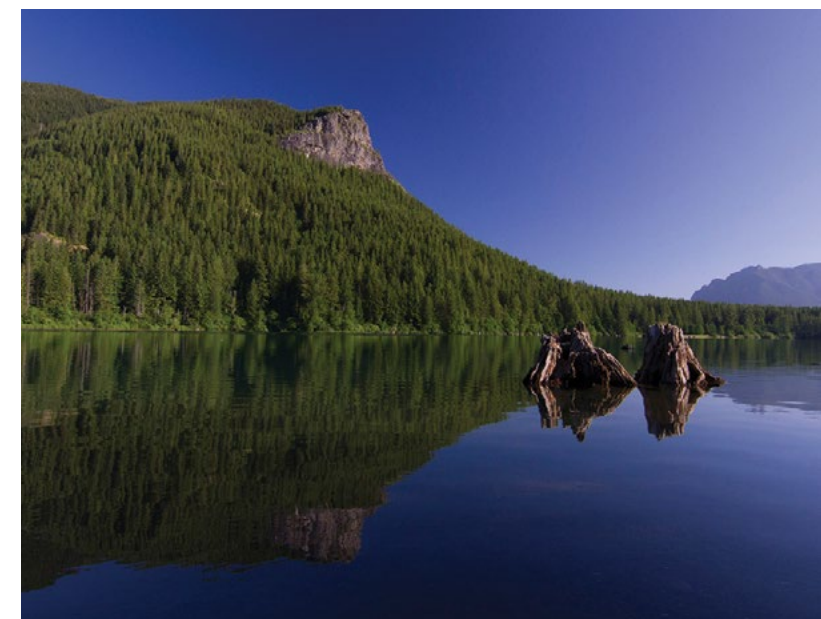
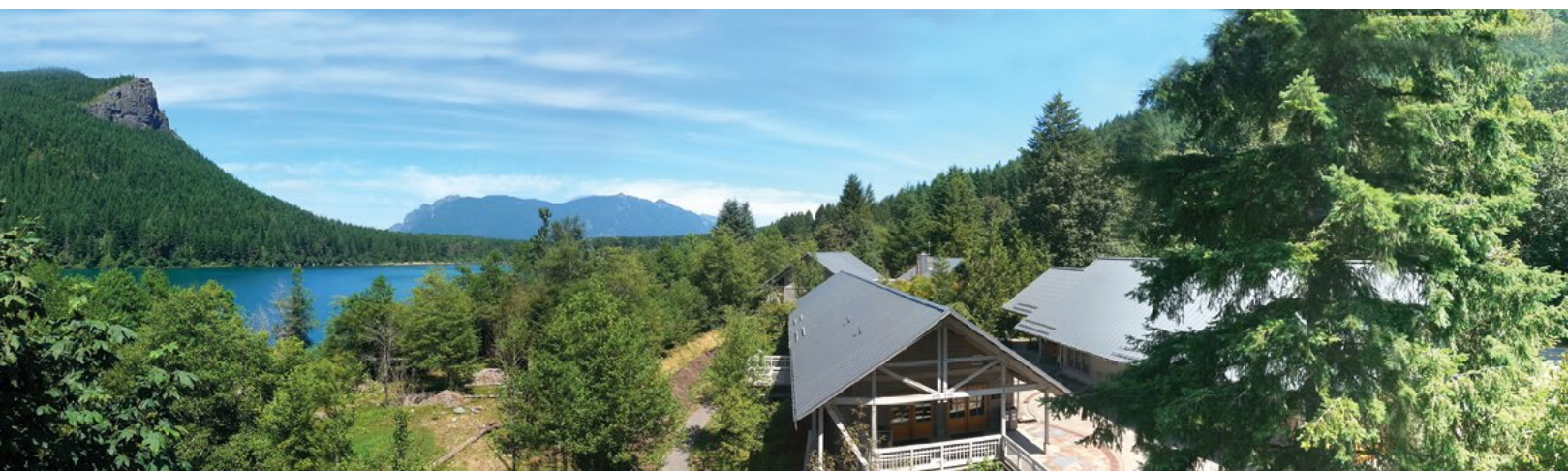
Bus Tour  
Van Tour

Watershed-based  
Center-based

Hiking Off-Trail  
Free Special Event

Adults  
Families





## CEDAR RIVER WATERSHED EDUCATION CENTER

The Cedar River Watershed Education Center is located along the shores of Rattlesnake Lake. Built in 2001, its architecture reflects the history of the area and is a model of sustainability — from sod roofs to recycled rubber flooring. Sweeping views of Rattlesnake Ledge can be seen from the observation decks, while native plants flourish in the unique Rain Drum Courtyard.


The Welcome Room creates a relaxing and comfortable atmosphere to browse books and play. At the front desk, staff are available to answer questions.

The free, award-winning *Water is Magic* Exhibits create a joyful learning experience. On designated days you can delve deep into watershed history in the Heritage Library.

## RATTLESNAKE LAKE RECREATION AREA


Rattlesnake Lake Recreation Area is owned and managed by Seattle Public Utilities. It includes Rattlesnake Ledge, a distinct rock formation chiseled by ice and time, and the sparkling turquoise water of the lake. Each year thousands of people enjoy hiking, swimming, and picnicking in this park setting. The park has pit toilets but no running water.

A popular 2-mile trail leads to a stunning view at the top of Rattlesnake Ledge. Below, the waters of Rattlesnake Lake hide the secrets of Moncton, a town accidentally flooded in 1915. A scenic 1-mile paved trail connects Rattlesnake Lake Recreation Area to the Education Center. Along the way, signs interpret the history and wildlife of the area.

 The Cedar River Watershed Education Center connects people to the source of Seattle's drinking water and its unique cultural and natural history, inspiring confidence, stewardship, and sustainability.

CONTACT US >

 17905 Cedar Falls Rd SE, North Bend, WA 98045

 PHONE: 206.733.9421 | 425.831.6780

 [www.seattle.gov/util/crvec](http://www.seattle.gov/util/crvec)

 EMAIL: [CRWprograms@seattle.gov](mailto:CRWprograms@seattle.gov)





# REGISTRATION

**PLAN AHEAD** Registration begins on April 1 (for all programs except 2018 Winter Weekends). Space is limited, so make your reservations early.

**COST** Prices vary depending on the program. Payment is due in full prior to the program and can be paid online, in person, or by mail. Cash, check, and credit cards are accepted.

**CANCELLATIONS** To receive a refund or credit, cancellations must be made at least two weeks prior to the program.

**BE PREPARED** Many programs happen in remote areas of the watershed, far from indoor facilities. You may encounter cold temperatures, rain, mud, insects, heat, and other inclement conditions.

Please come equipped with food (snack/lunch), water, appropriate footwear (hiking/waterproof), rain gear, and any other provisions (such as hiking poles) needed for you to stay warm, dry, and comfortable for the duration of the program.

For longer trips, attendees need to be in good physical condition and prepared for a day outside that includes hikes of moderate intensity.

## WATERSHED MANAGEMENT

Seattle Public Utilities' Watershed Management Division has primary responsibility for managing over 100,000 acres of forested land in the Central Cascades. The Cedar River and South Fork Tolt River Municipal Watersheds are the source of clean, clear, reliable drinking water for over 1.4 million customers, providing over 100 million gallons of water a day.

The watersheds are complex natural systems, with roads, culverts, bridges, multi-aged forests, fish and wildlife, dams, and power plants. They are managed under a variety of laws, ordinances, and

agreements, including the Safe Drinking Water Act, a Secondary Use Ordinance, a Habitat Conservation Plan, and Watershed Management Plans.

The staff of the Watershed Management Division protect the watershed boundaries, monitor weather conditions, and maintain roads, bridges, and facilities. They also manage the forest ecosystem, monitor fish and wildlife species, control invasive plants, and provide education opportunities to ensure the safety and integrity of the land and water, helping to keep Seattle the best place to live.



The Cedar River Watershed Education Center connects people to the source of Seattle's drinking water and its unique cultural and natural history, inspiring confidence, stewardship, and sustainability.

## CONTACT US >

17905 Cedar Falls Rd SE, North Bend, WA 98045

PHONE: 206.733.9421 | 425.831.6780

[www.seattle.gov/util/crvec](http://www.seattle.gov/util/crvec)

EMAIL: [CRWprograms@seattle.gov](mailto:CRWprograms@seattle.gov)





## CEDAR RIVER WATERSHED EDUCATION CENTER

🏠 17905 Cedar Falls Road SE North Bend, WA 98045

🌐 [www.seattle.gov/util/crwec](http://www.seattle.gov/util/crwec)

☎ 206.733.9421 | 425.831.6780

✉ [CRWprograms@seattle.gov](mailto:CRWprograms@seattle.gov)

💧 Connecting people to the source of Seattle's drinking water and its unique cultural and natural history, inspiring confidence, stewardship, and sustainability.

