

Expanding Tree Canopy in Washington, DC

City of Seattle

August 12, 2020



Presentation Outline

Welcome to Washington, DC

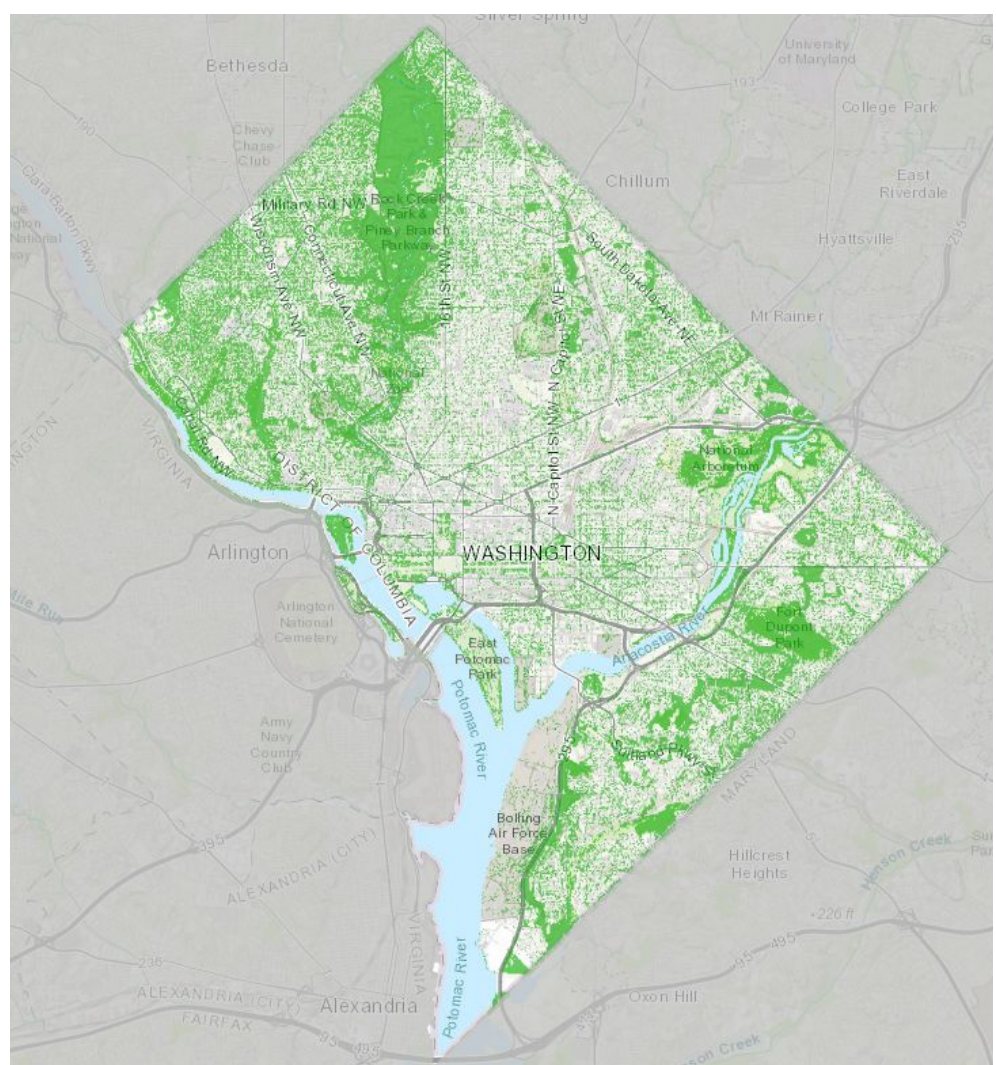
Introduce DDOT's Urban Forestry Division

Trends in Washington, DC

Tree & Canopy Preservation Regulations

Strategies for Canopy Expansion

Outcomes Over Time



responsibilities

direct management
of public trees

regulate private
tree removal



8,000 trees planted.

15,000 trees pruned.

3,500 trees removed.

15,000 requests for service.

703k residents.

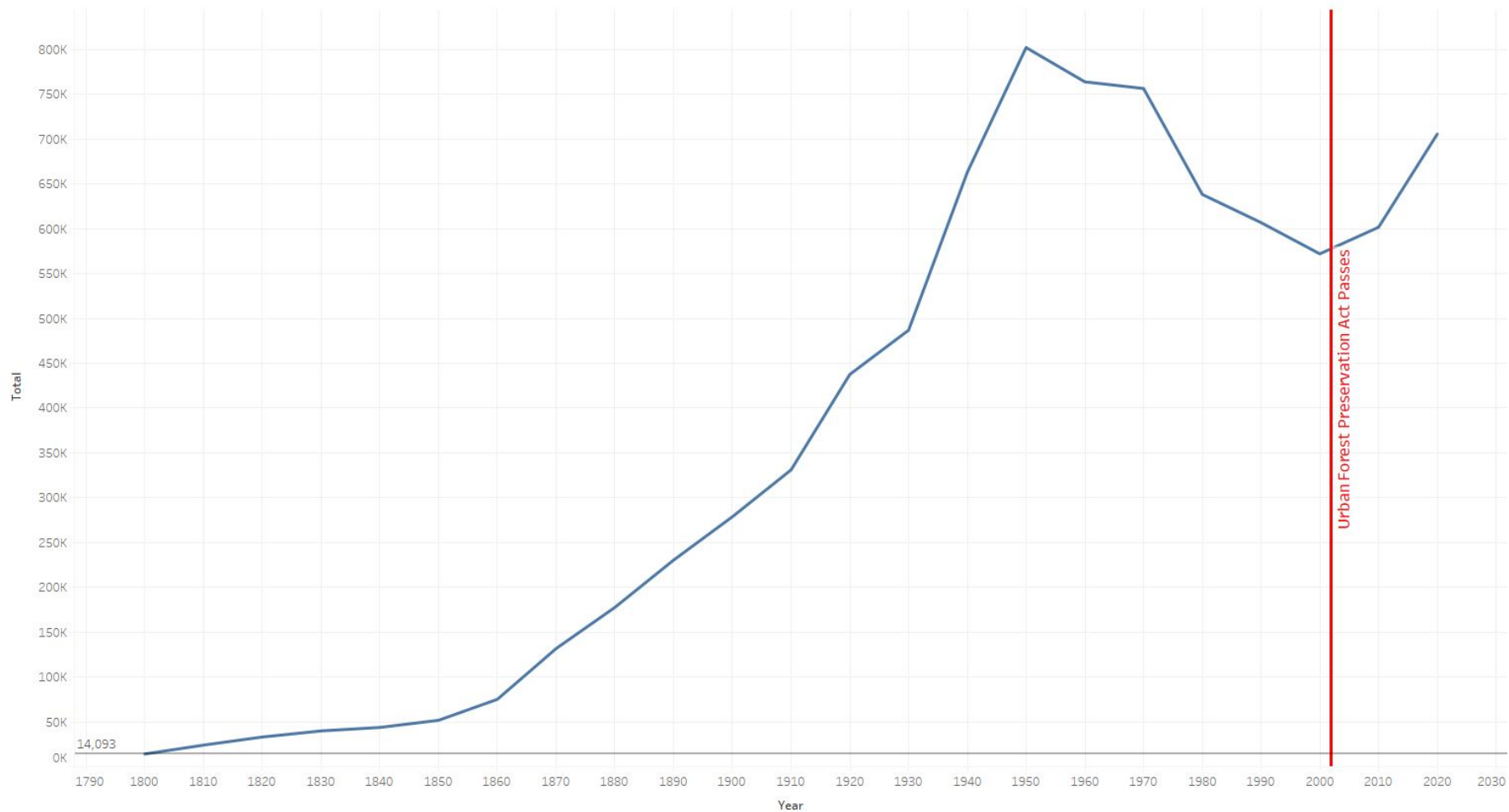
2.5 million trees.

38.7% tree canopy.

40%

urban tree canopy goal by 2032

Population in Washington DC, 1800 to Present



Urban Forest Preservation Act of 2002

Regulates the removal of trees ~~55~~ 44" - 100" circumference [**Special Trees**]

Prevents removal of non-hazardous trees larger than 100" circumference [**Heritage Trees**]

Fee & Fine Schedule:

Hazardous Special & Heritage Trees: **No Fee**

Non-Hazardous Special Trees: ~~\$55~~ \$55 per inch circumference **Fee**

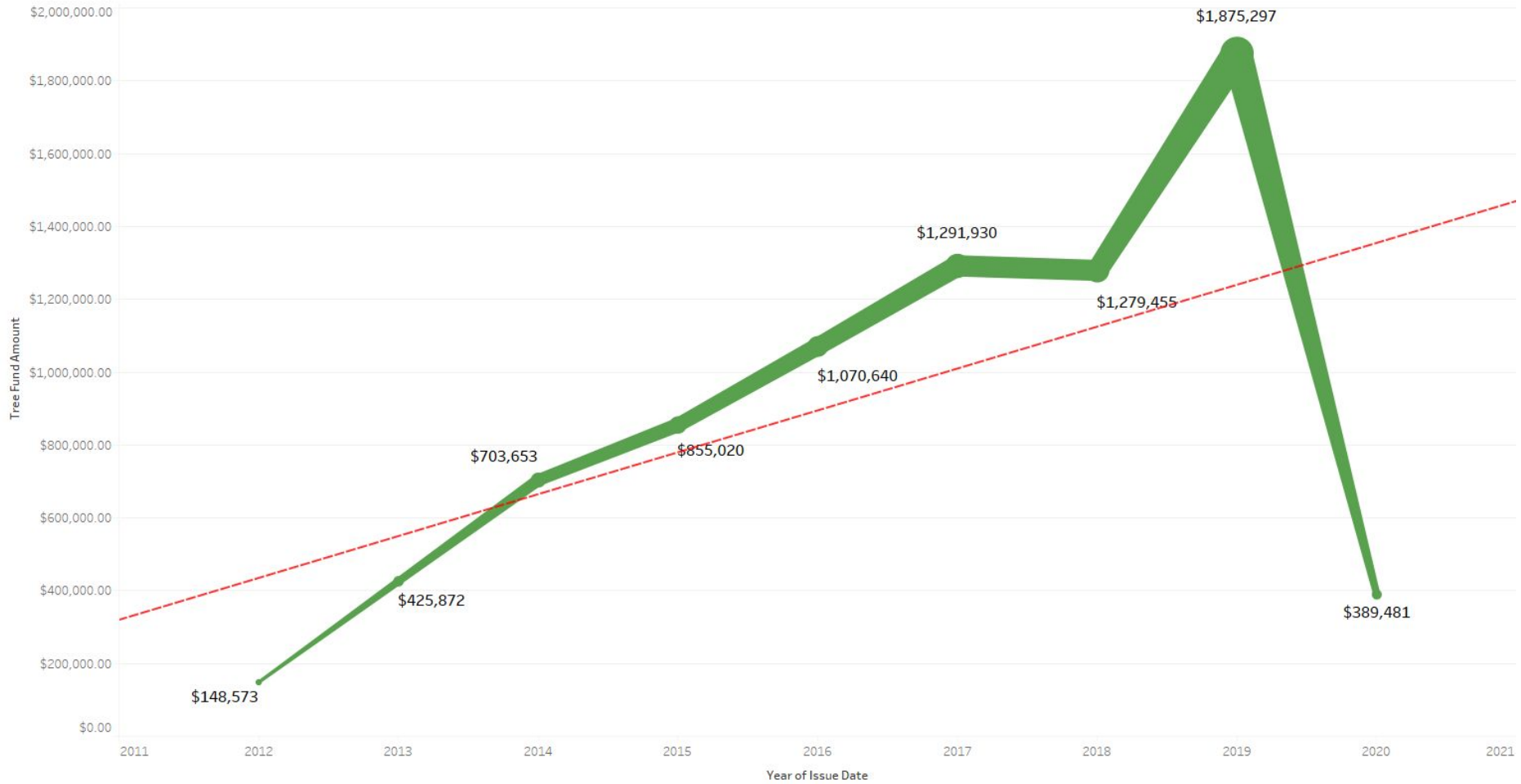
Special and/or Heritage Tree: ~~\$100~~ \$300 per inch circumference **Fine**

Preserves (and ultimately expands) tree canopy over time, by replacing a single tree with multiple new plantings.

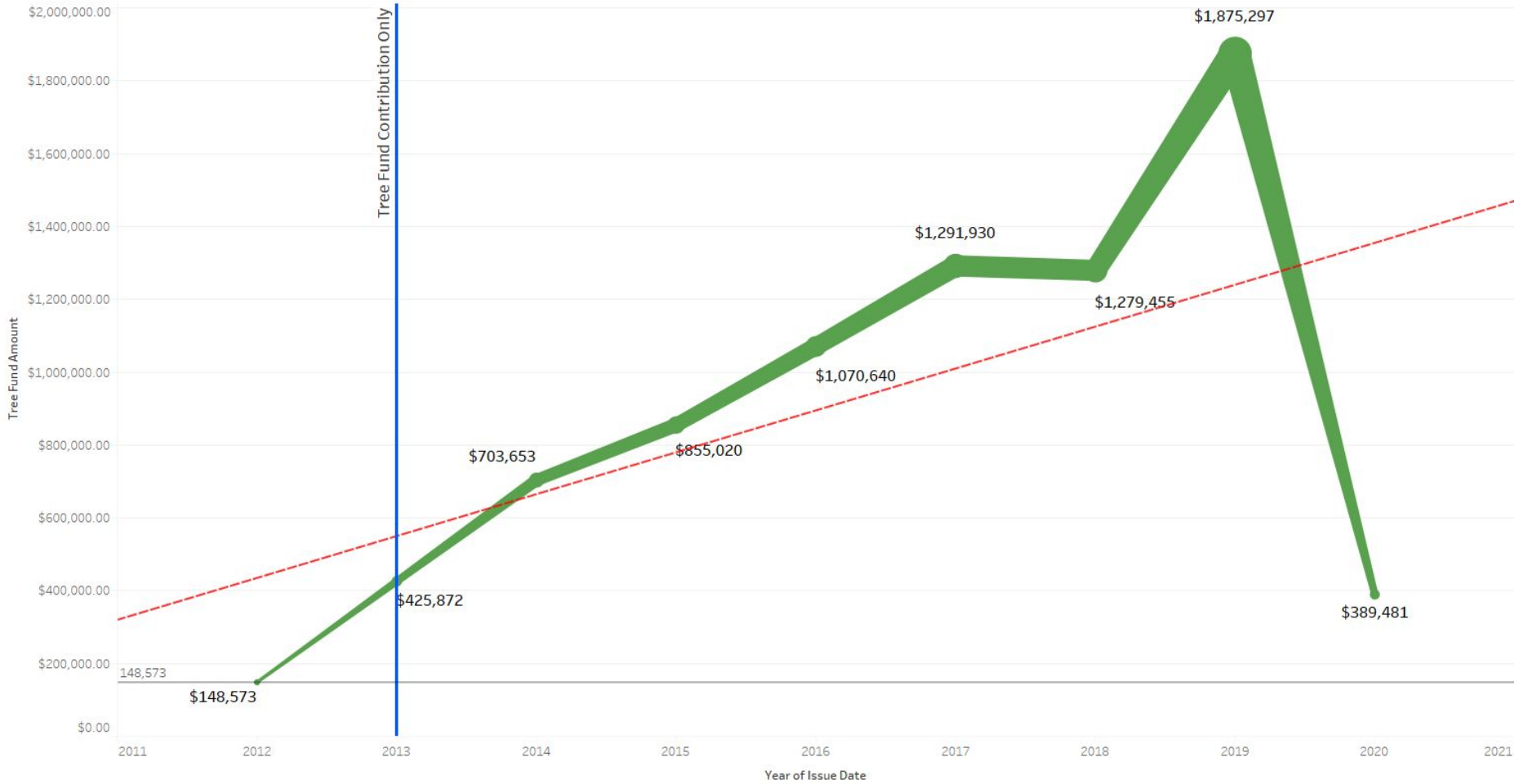


In the 15 years
since enactment
**5,194 non
hazardous trees**
have been
removed.

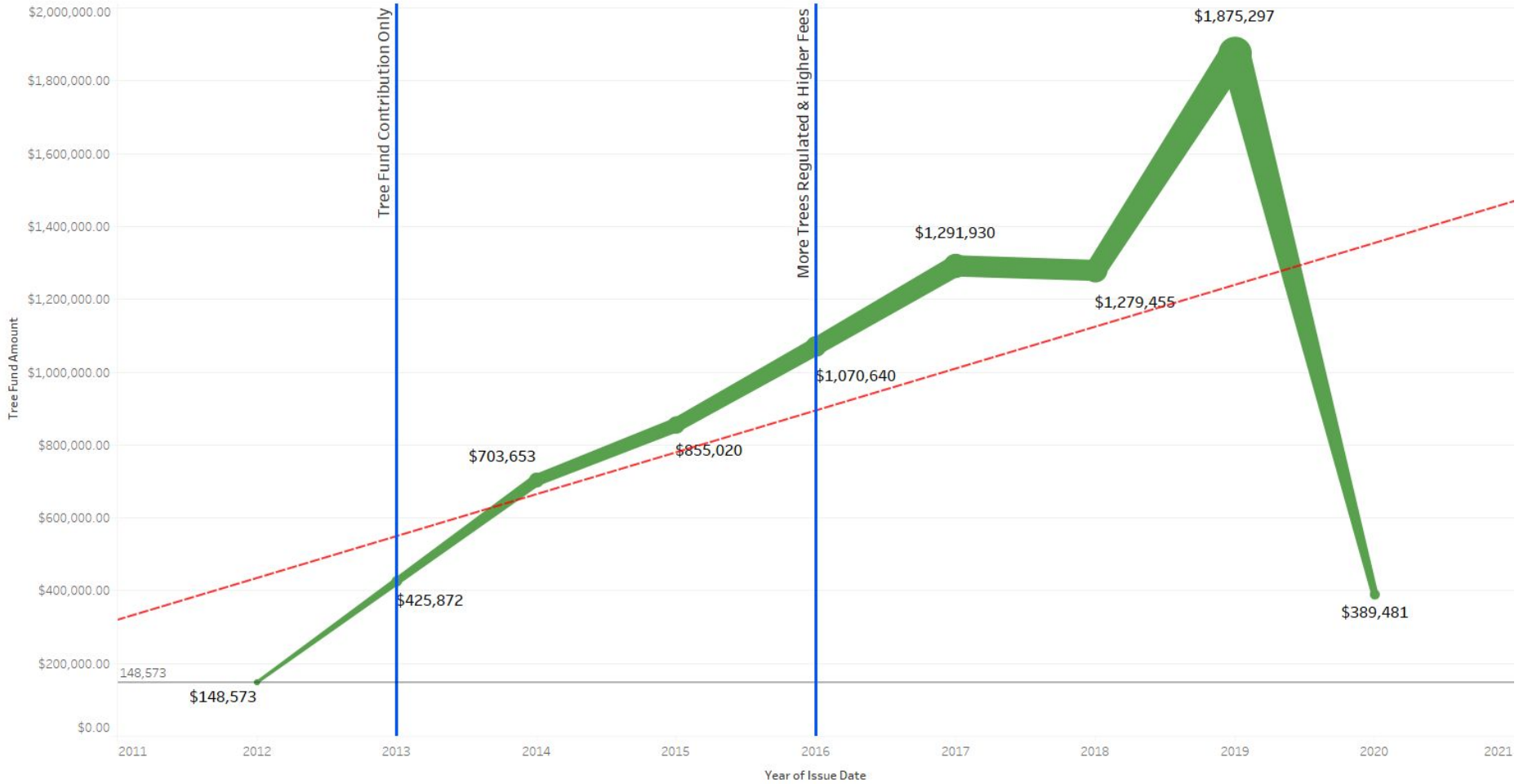
Tree Fund Contributions

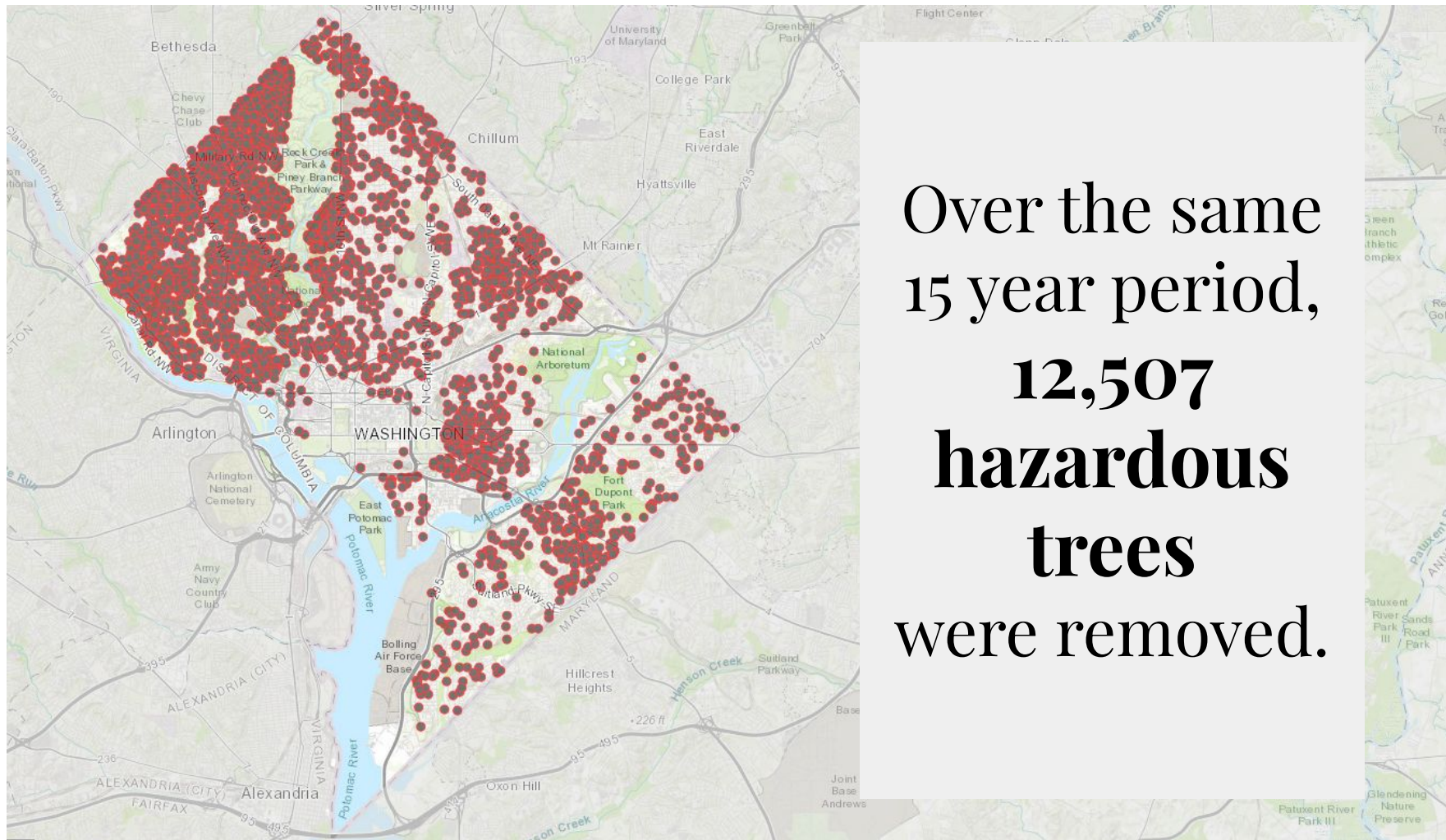


Tree Fund Contributions



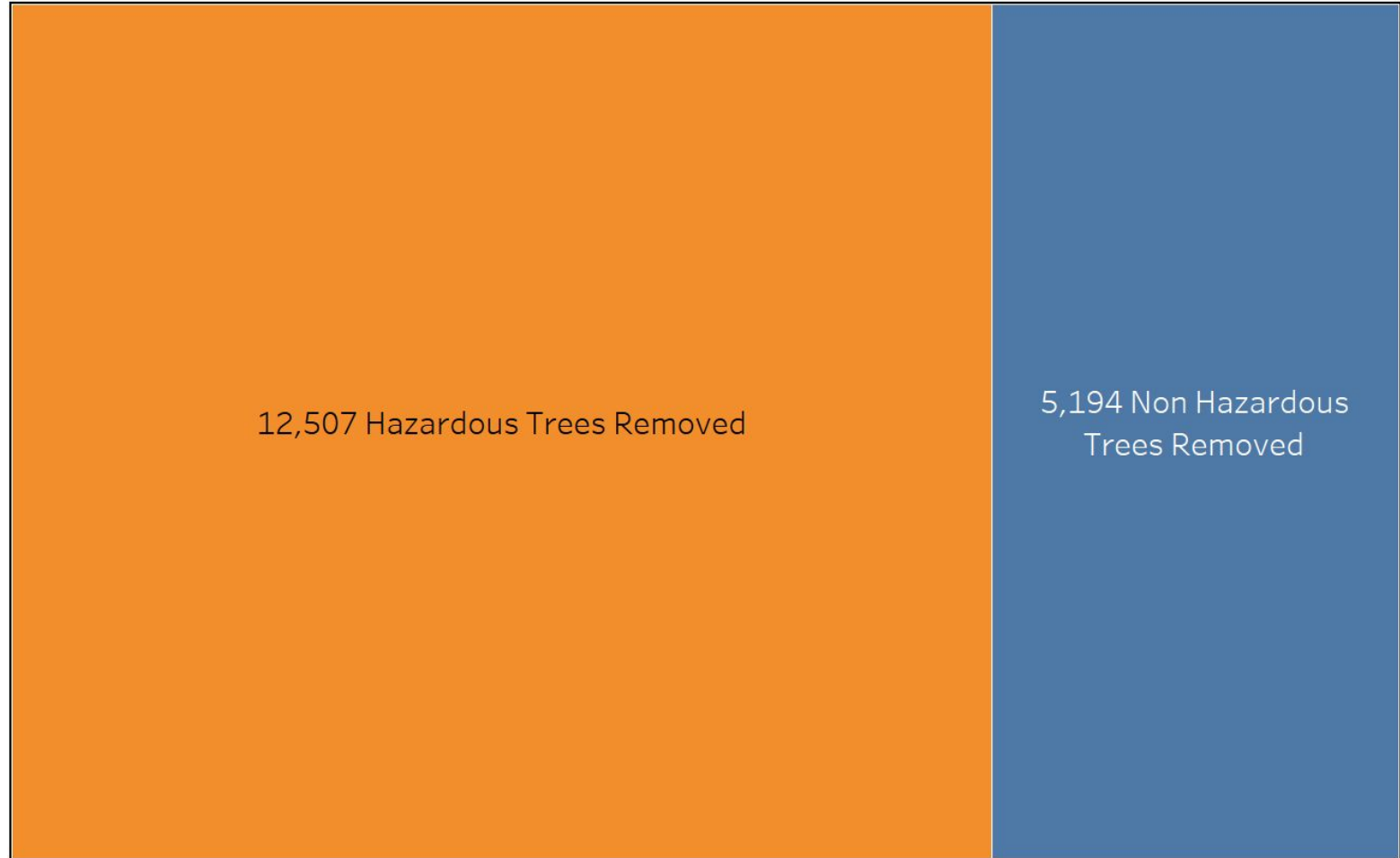
Tree Fund Contributions





Over the same
15 year period,
12,507
hazardous
trees
were removed.

Hazard vs Non Hazardous Trees Removed



Special Tree Replacement Program

If you've successfully applied for a Special Tree Removal Permit you can replace it through our Special Tree Replacement Program. Accentuate your property with a beautiful shade tree at no cost, and there is no limit to the number of trees that can be planted. To register, submit an application and we'll do all we can to get your tree planted in the spring or fall.



The Special Tree Replacement Program is made possible with funding from the Department of Energy and Environment and in partnership with DDOT Urban Forestry Division.

Special Tree Replacement Program

Urban Forestry

Program Details

If you've applied for a Special Tree Removal Permit you can replace it through the Special Tree Replacement Program. We now provide the replacement planting of new trees, at **no cost!** These free trees are provided courtesy of the DDOT Urban Forestry's Tree Fund. This offer applies to removal of Special Trees or Heritage Trees deemed hazardous.

- Within the District, all special tree removal applicants OR anyone with a current/expired special tree removal permit are eligible for one or more free replacement trees.
- Apply for one or more trees at any time, even before tree removal has occurred.
- Sign up for replacement trees at any time throughout the year, but planting occurs from October-April
- For more on special trees: <https://ddot.dc.gov/service/special-tree-permit>
- If you are ready to sign up for a new tree (or trees!), please follow this link: <https://caseytrees.org/replacement>



District Department of Transportation
Urban Forestry Division
55 M Street, SE, Suite 400 Washington, DC 20003
(202) 671-5133; For Service, Call 311
<http://ddot.dc.gov/trees> <http://ddottrees.com>

FREE TREES



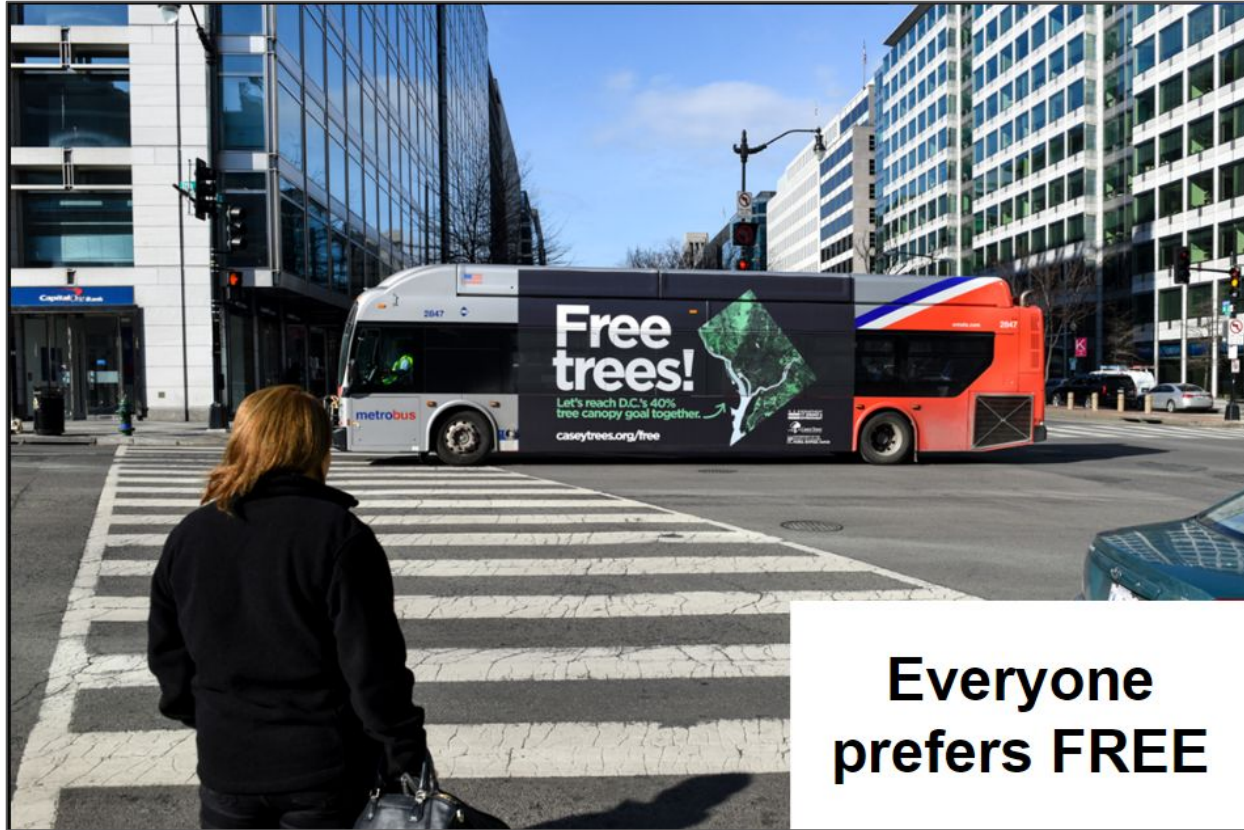
Photo courtesy of Casey Trees



District Department of Transportation

**Delivering a healthy, safe and
growing street tree canopy in DC**

Make Special and Heritage Tree Replacement Free

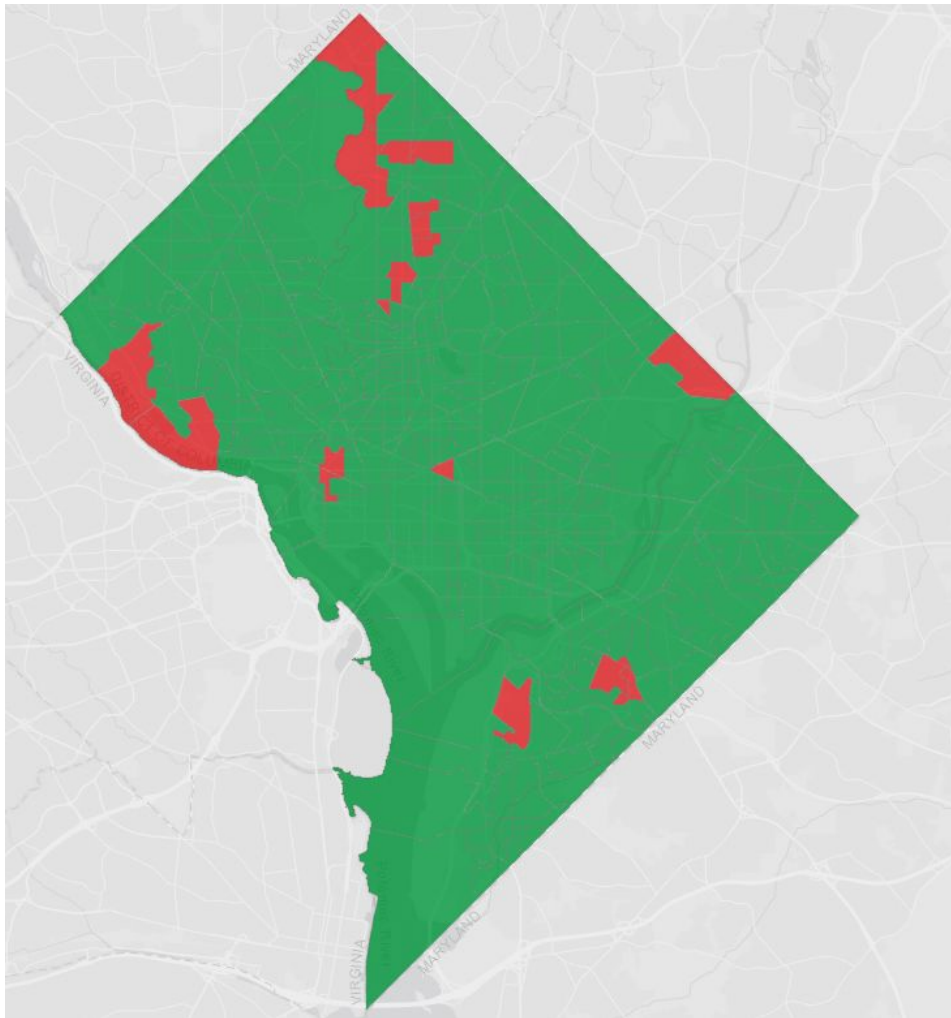


Everyone
prefers FREE

Make **All**
Private
Tree
Planting
Free

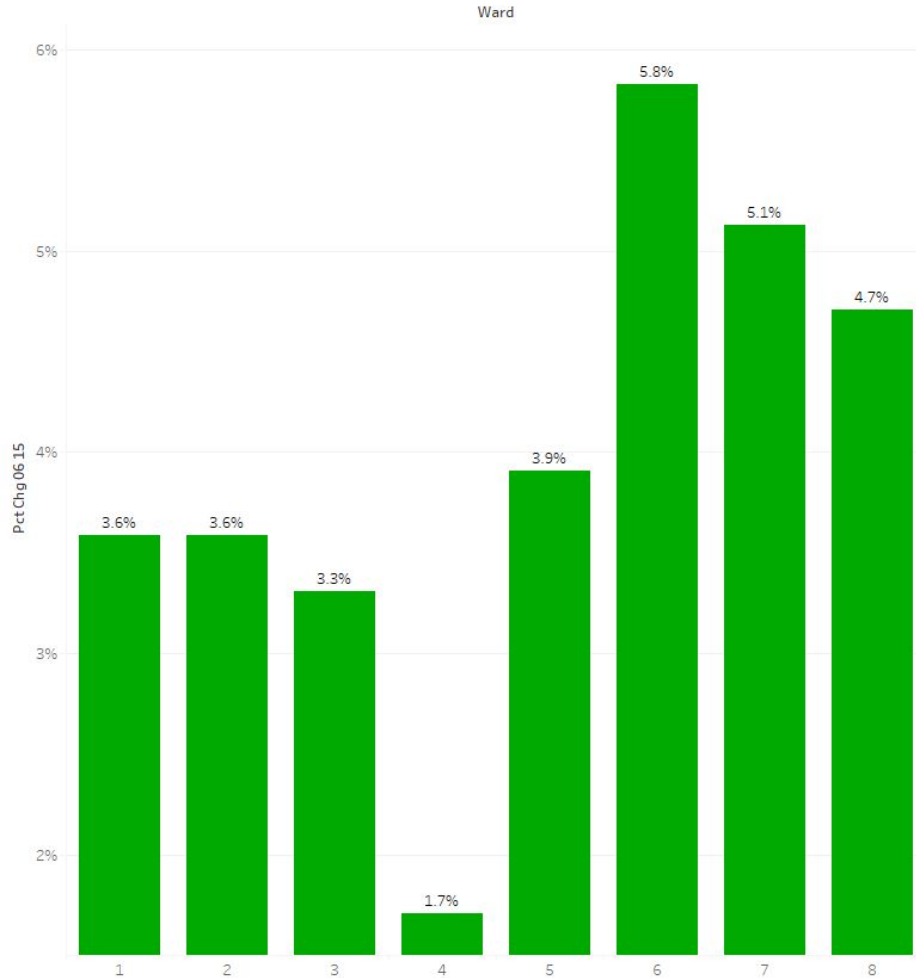
38.7%

existing urban tree canopy



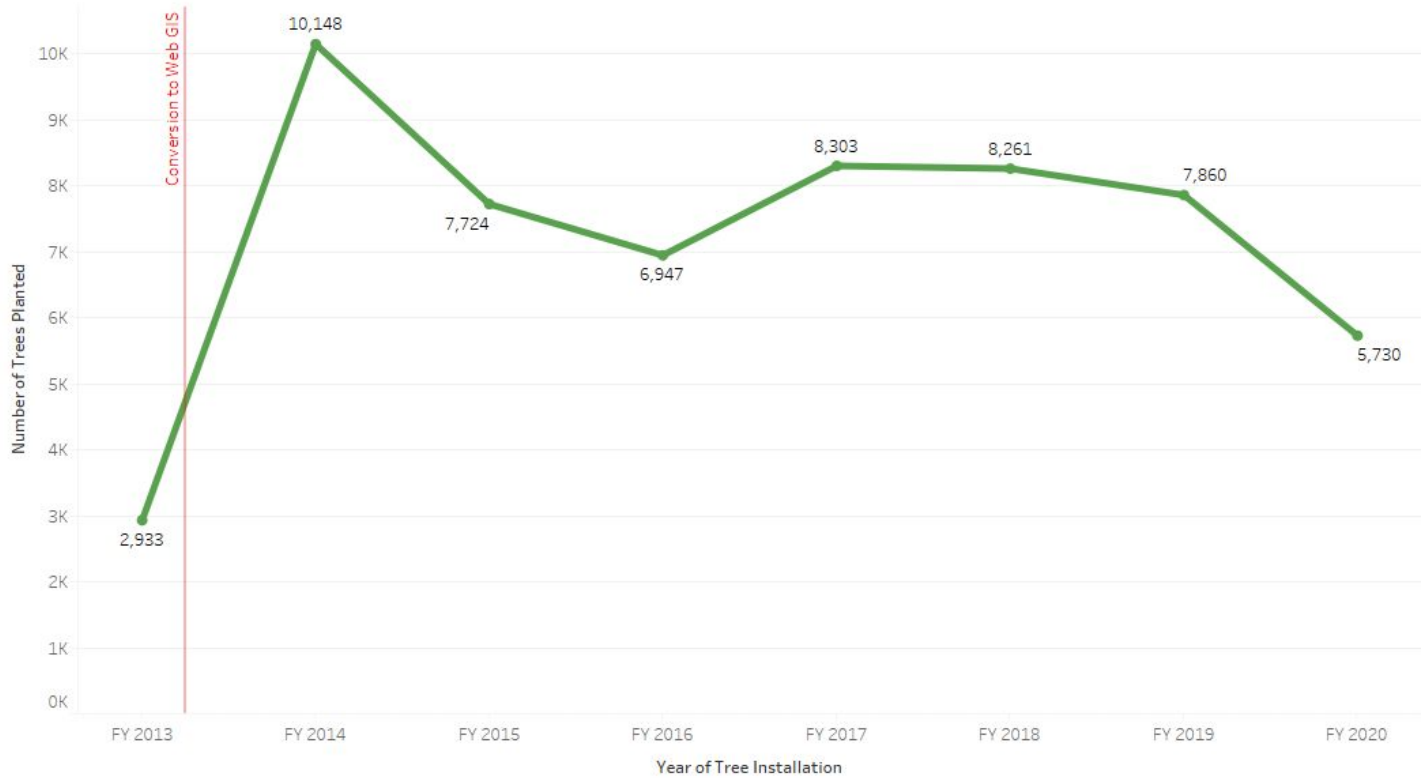
In the 10 year period between 2006 - 2015, only 18 out of 296 Single Member Districts experienced a net loss in UTC.

Tree Canopy Increase Since 2006



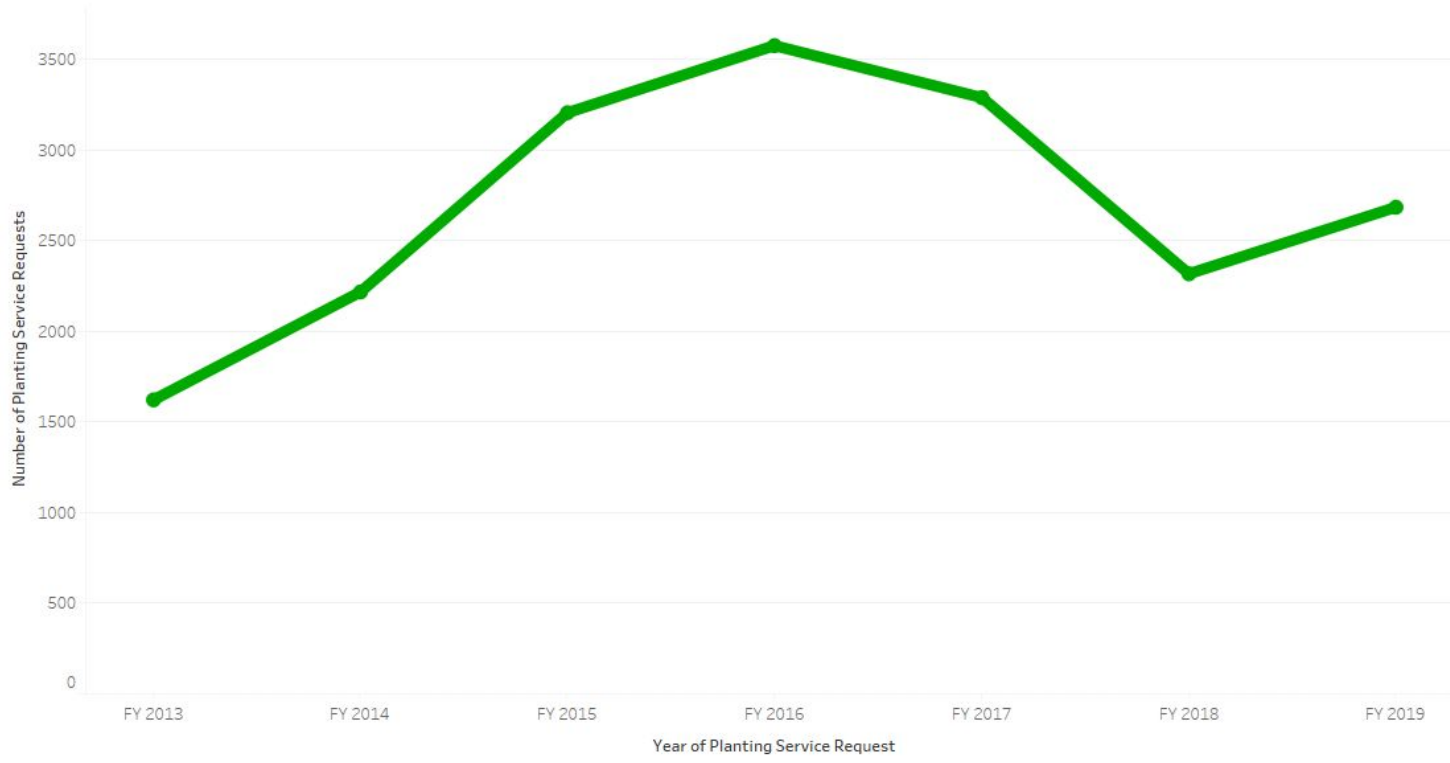
In that same 10
year period **all
8 Wards**
experienced a
net increase in
UTC

Tree Planting Trends 2013 - 2020



**58,000
New
Trees
Planted**

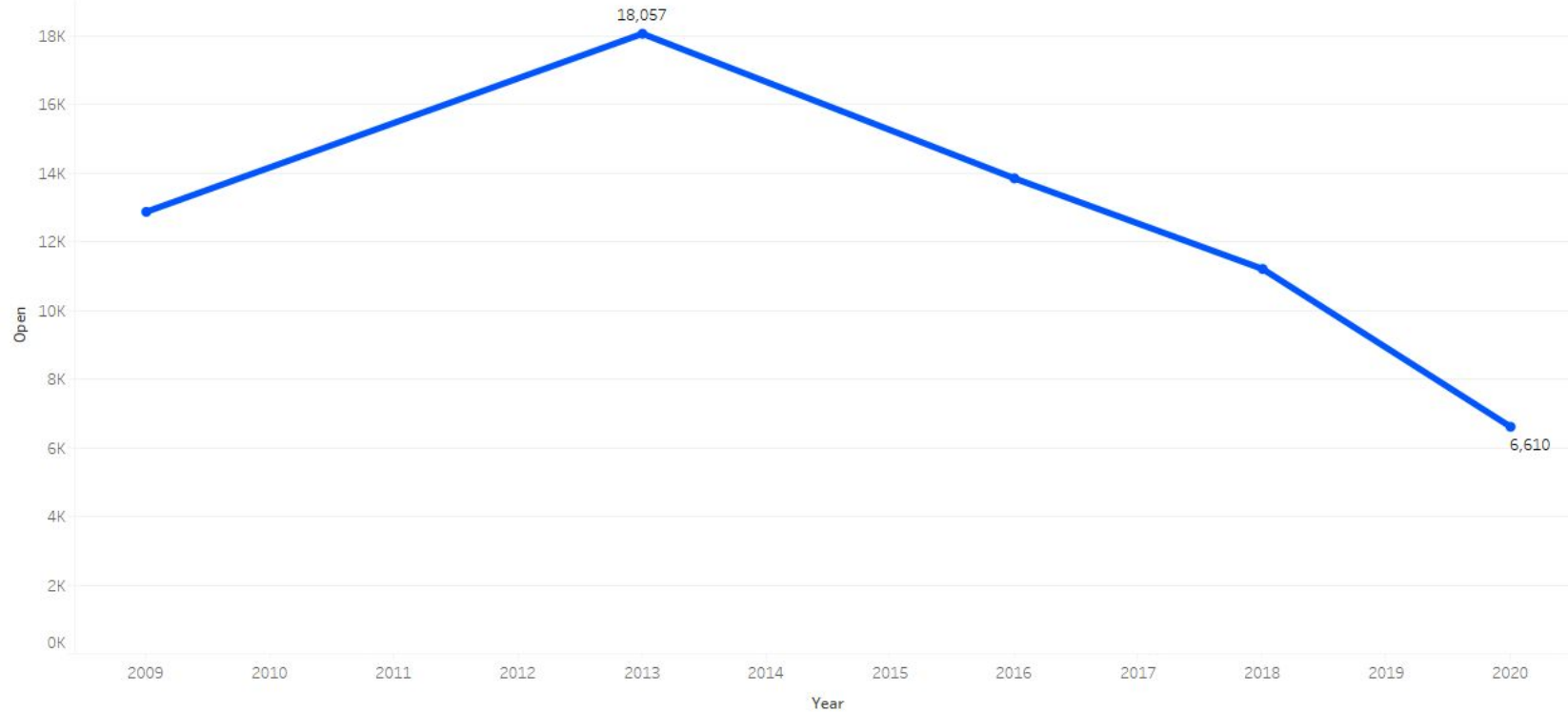
Tree Planting Requests 2013 - 2019



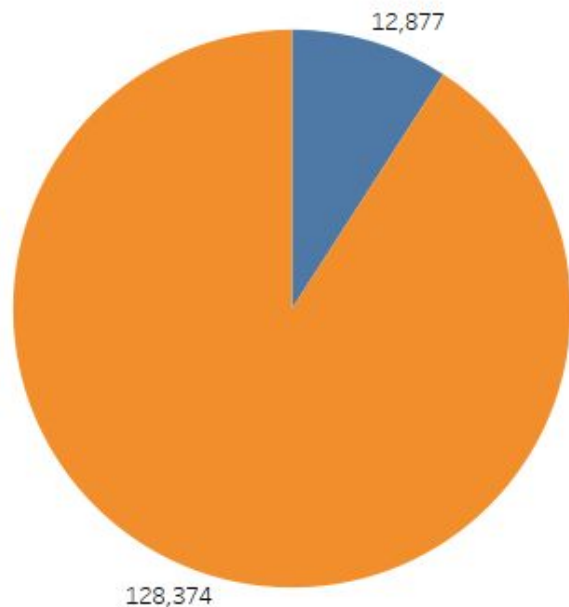
**Requests
for
Planting
Continue
to
Increase...**

While Open Spaces Are Greatly Reduced

Open Spaces 2009-2020



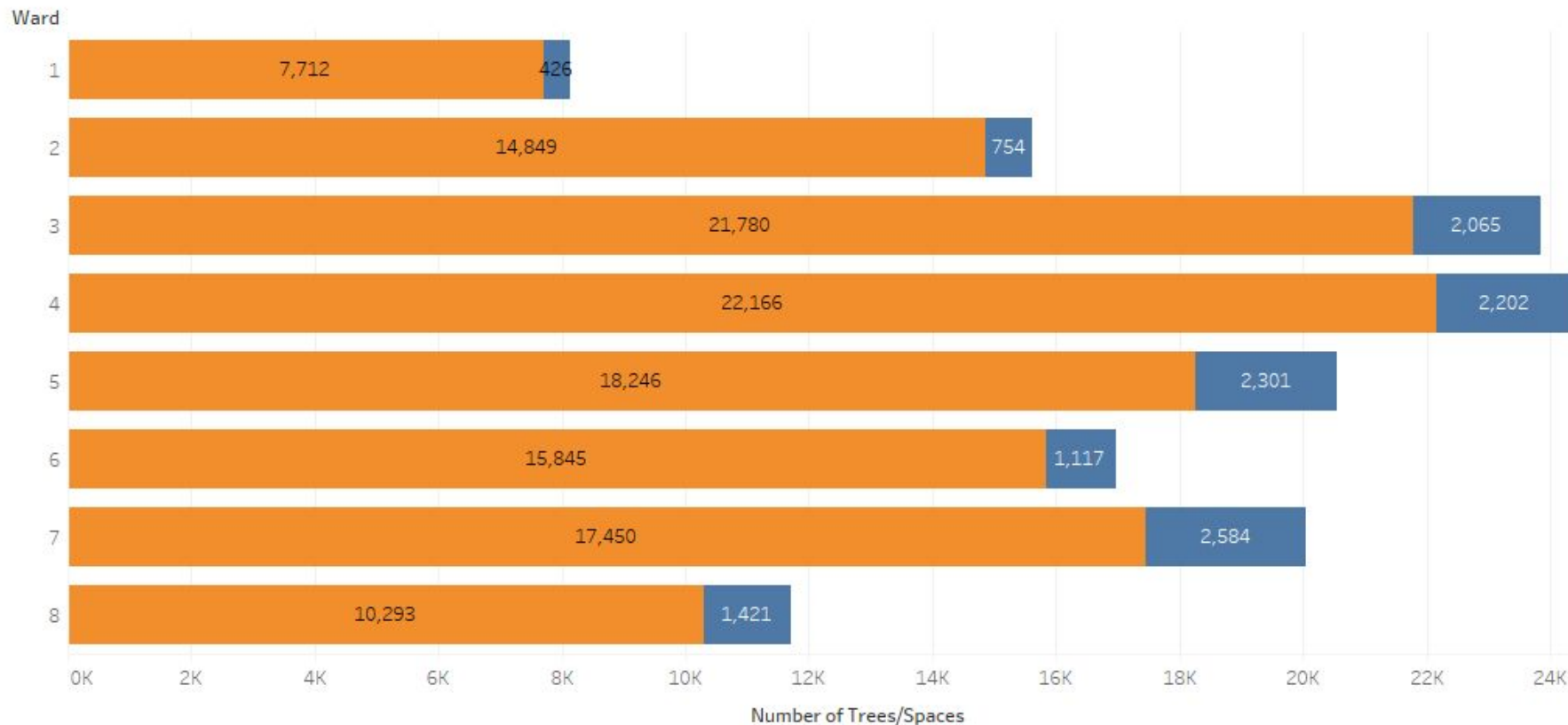
Total Trees & Open Spaces 2009



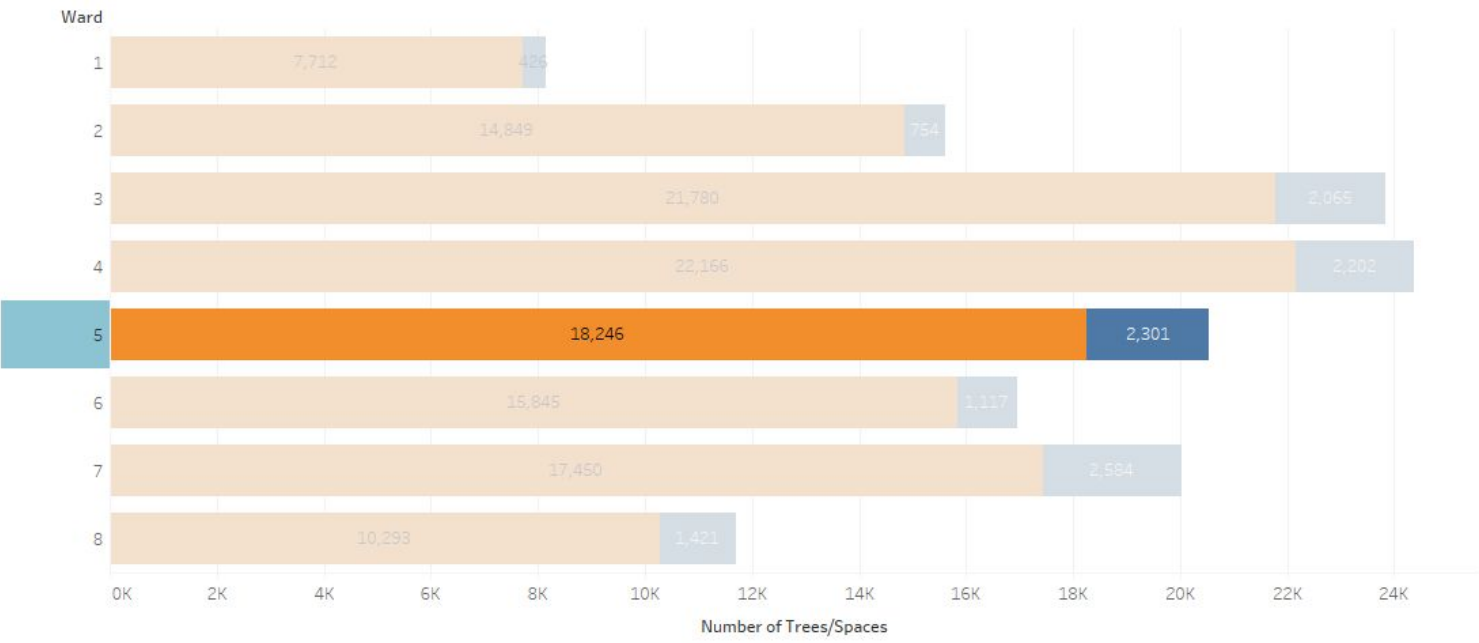
2009 Tree Levels

- **12,877 Open Spaces**
- **128,374 Trees**
- **141,251 Total Trees & Spaces**
- **~91% Stocking Level**

Plant/Open Spaces 2009



Plant/Open Spaces 2009



**Ward 5
in
2009**

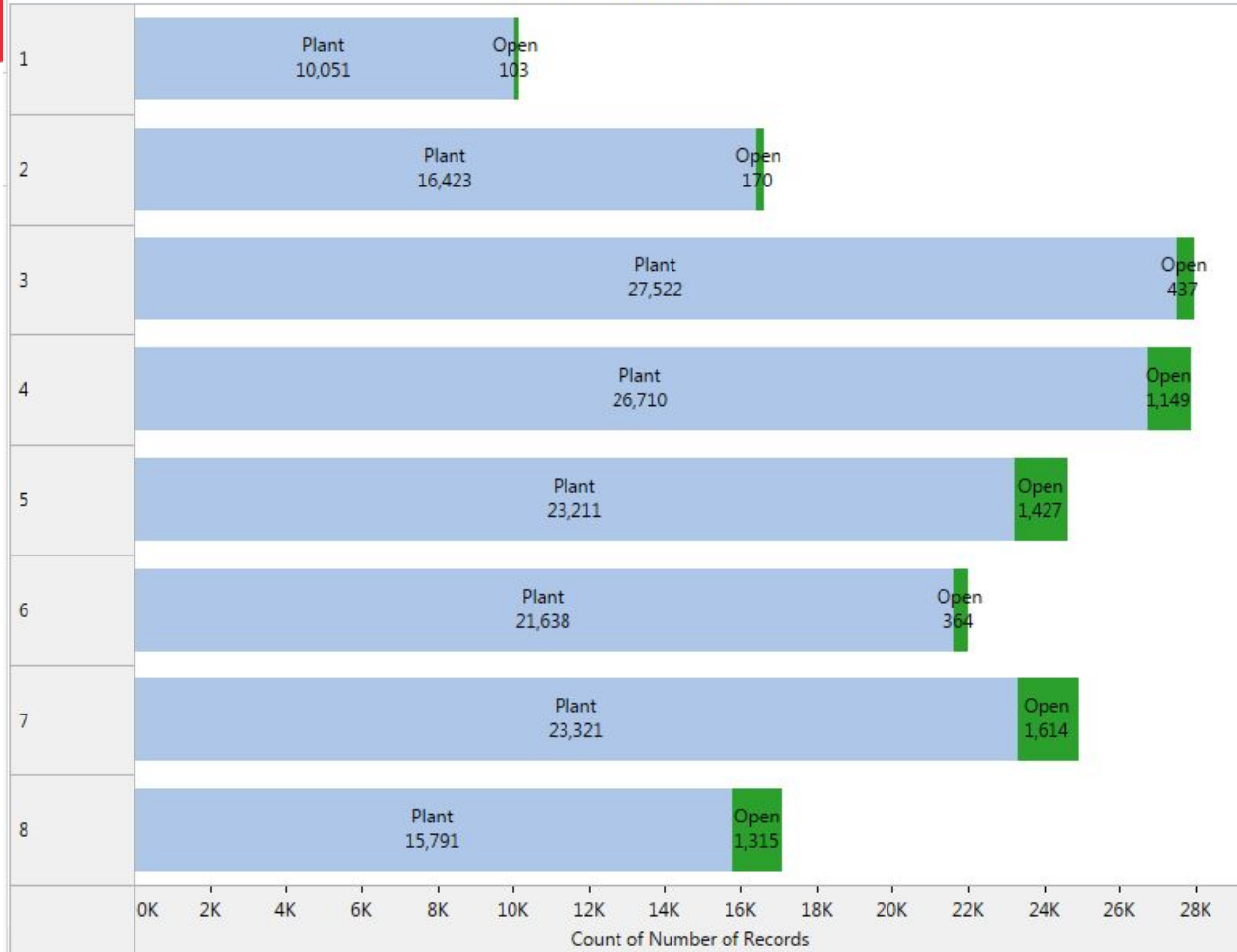
Open Spaces & Planted Trees



Ward 5 Trees In 2020

**4,965 Net Increase in
Planted Trees**

Open Spaces & Planted Trees



Percentage of Open to Planted Spaces in the ROW

Open	3.84%
Plant	96.16%

TBOX_STAT

- Open
- Plant

Total Number of Trees in the ROW

1	10,154
2	16,593
3	27,959
4	27,859
5	24,638
6	22,002
7	24,935
8	17,106
Grand Total	171,246

Thank you

Earl.Eutsler@dc.gov

DDOT Urban Forestry Division

www.ddottrees.com