

COLMAN PARK VEGETATION MANAGEMENT PLAN – *DRAFT PROPOSAL*

Community Proposal

INFORMATION ONLY

Friends of Colman Park



Seattle
Parks & Recreation

healthy people healthy environment strong communities



Our Mission

Seattle Parks and Recreation provides welcoming and safe opportunities to play, learn, contemplate and build community, and promotes responsible stewardship of the land. We promote healthy people, a healthy environment and strong communities.





31st Ave South



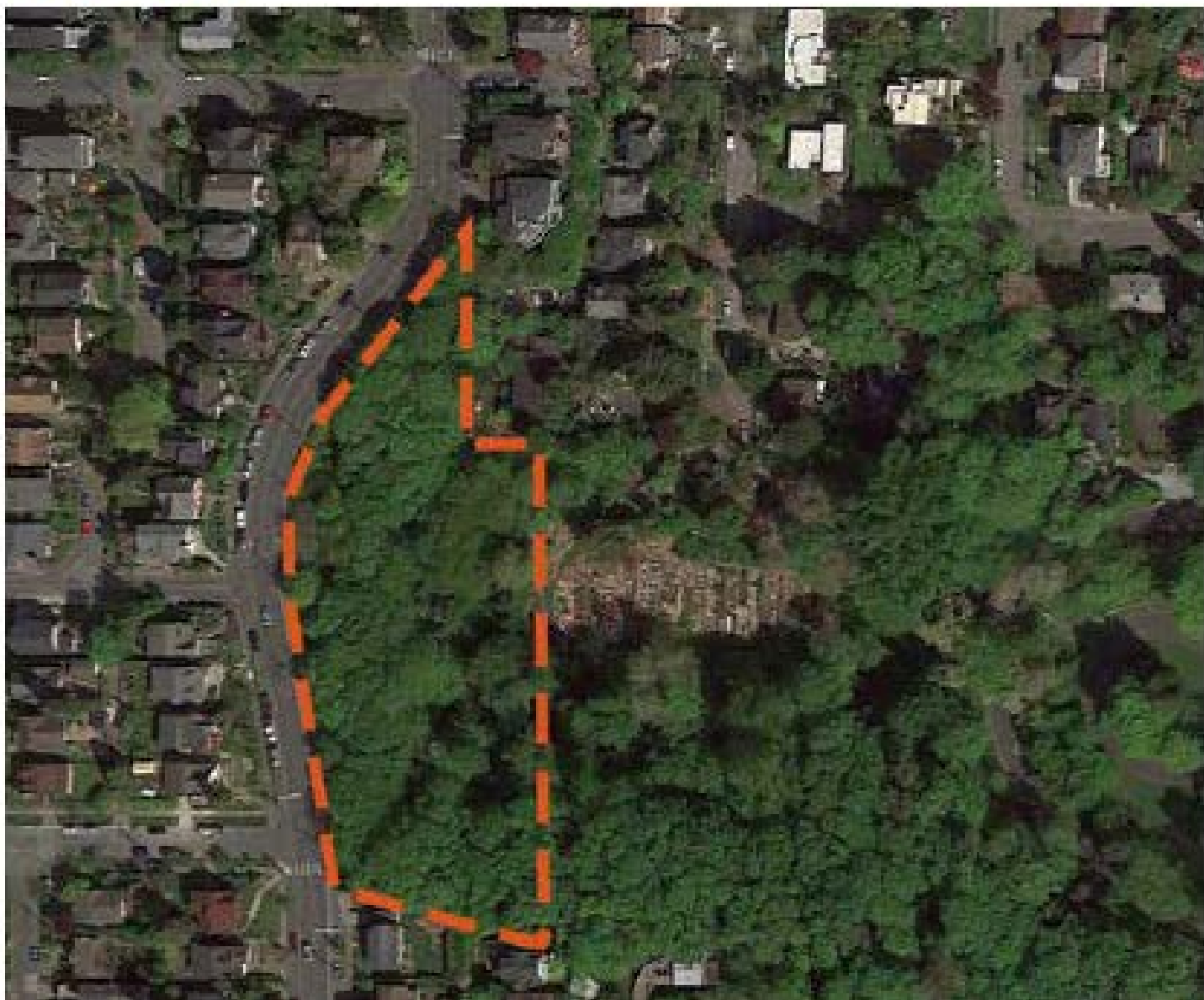
1.2 SITE, LOCATION, AND CONTEXT

PROJECT SITE:

- "Upper" Colman
- "Colman Vista"
- "Upper slope"
- "West entryway"

BORDERS:

- S Massachusetts St
- S Holgate St
- Colman Park P-Patch
- 31st Ave S



Site Location





Background





HISTORIC PHOTOS - 1947





HISTORIC PHOTOS - 1971



A black and white photograph showing a close-up of a sign. The sign is a light-colored strip with the words "STAIRWAY CLOSED" printed in bold, black, sans-serif capital letters. The sign is mounted on a dark, heavily textured surface, possibly asphalt or concrete. Below the main sign, there is another lighter-colored strip with some faint, illegible markings. To the right, a portion of a metal structure with circular elements is visible.

STAIRWAY CLOSED

HISTORIC PHOTOS - 1978





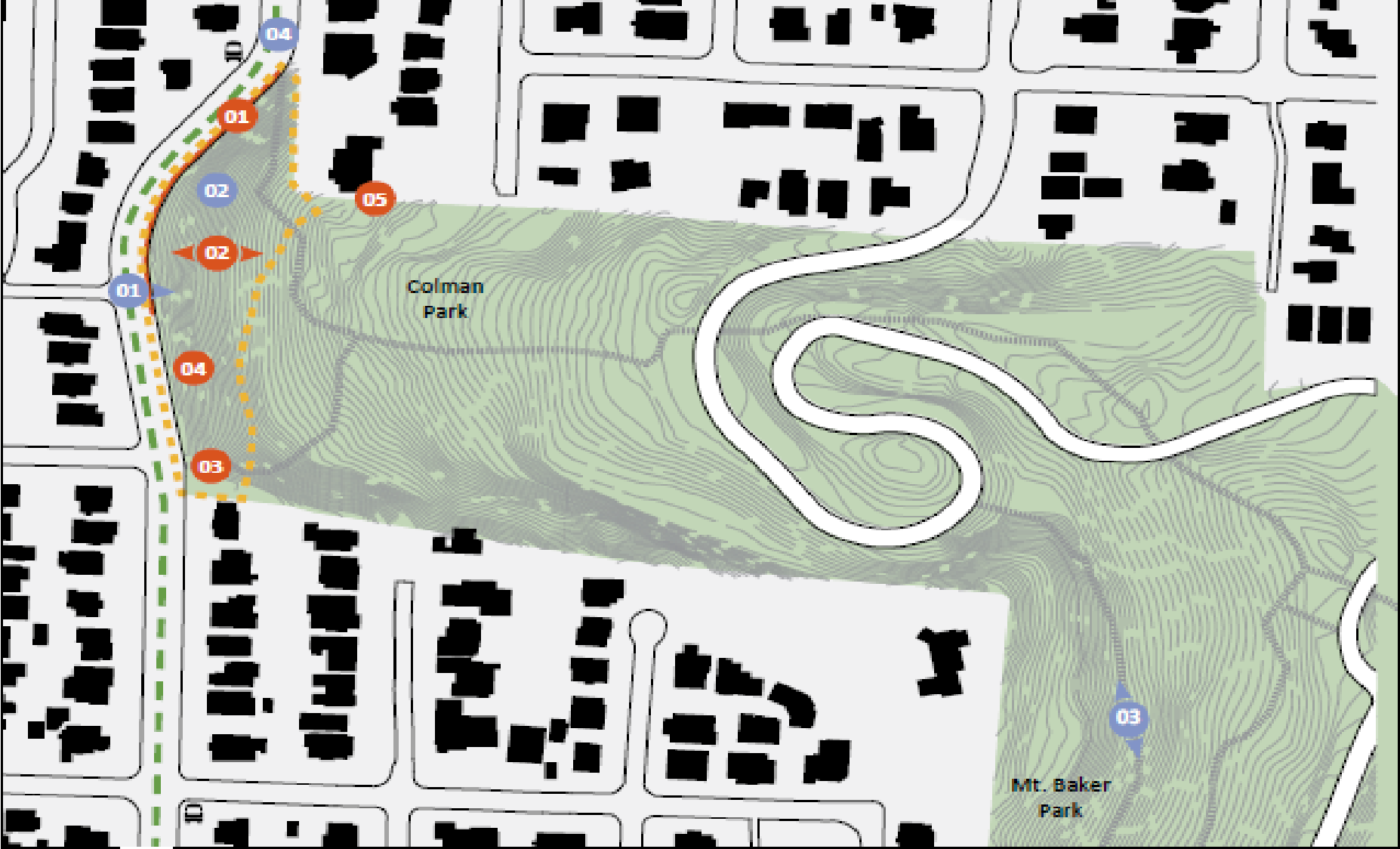
HISTORIC PHOTOS - 1991





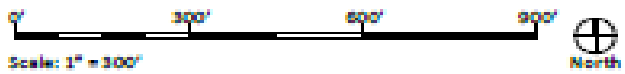
EXISTING SITE CONDITIONS





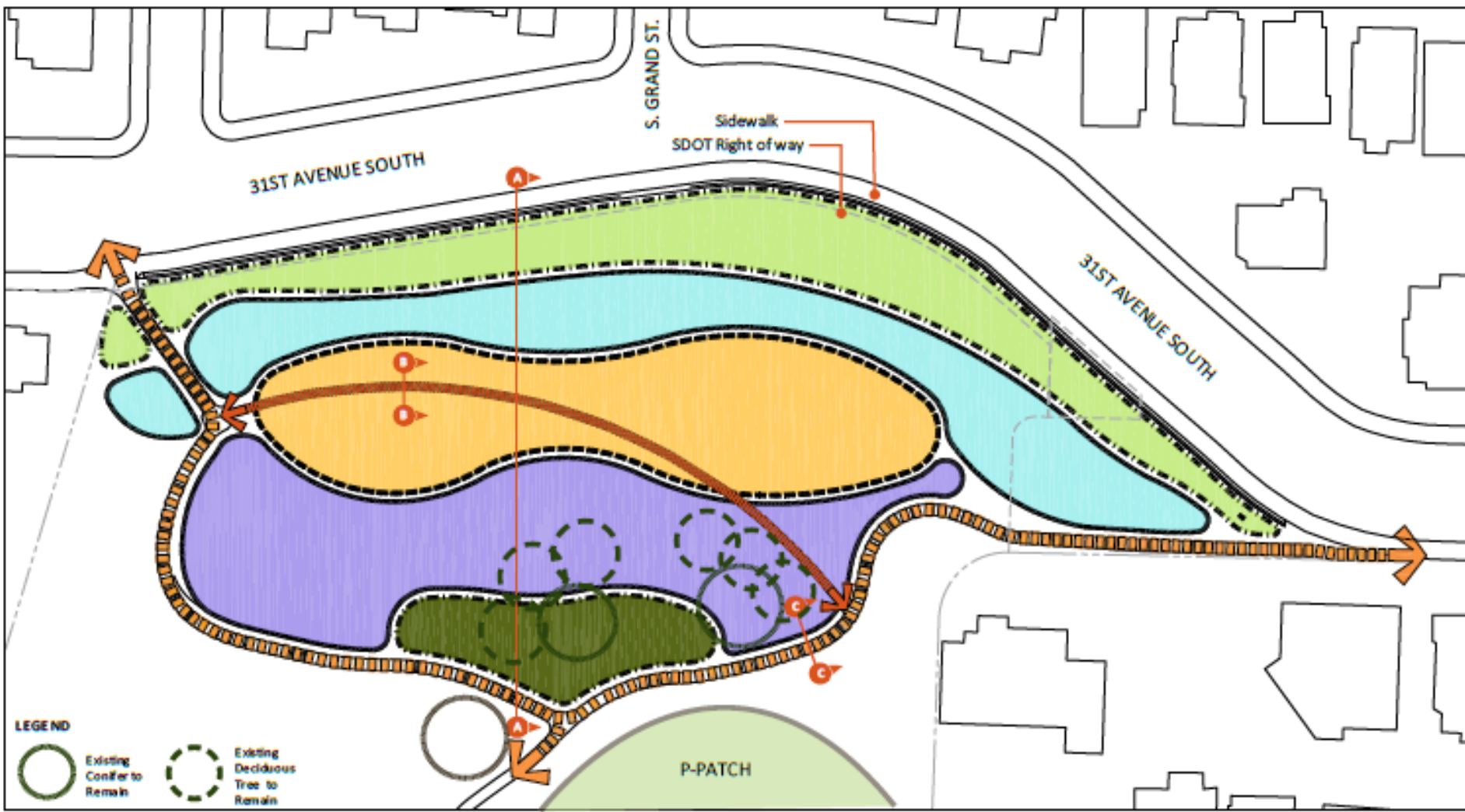
OPPORTUNITIES AND CONSTRAINTS

- Site Boundary
- Parks / Open Space
- Sharrow
- Bus Stop
- Opportunities
- Constraints



Proposed Opportunities





LEGEND

- Existing Conifer to Remain
- Existing Deciduous Tree to Remain

Zone 1 Zone 3 Zone 5
 Zone 2 Zone 4

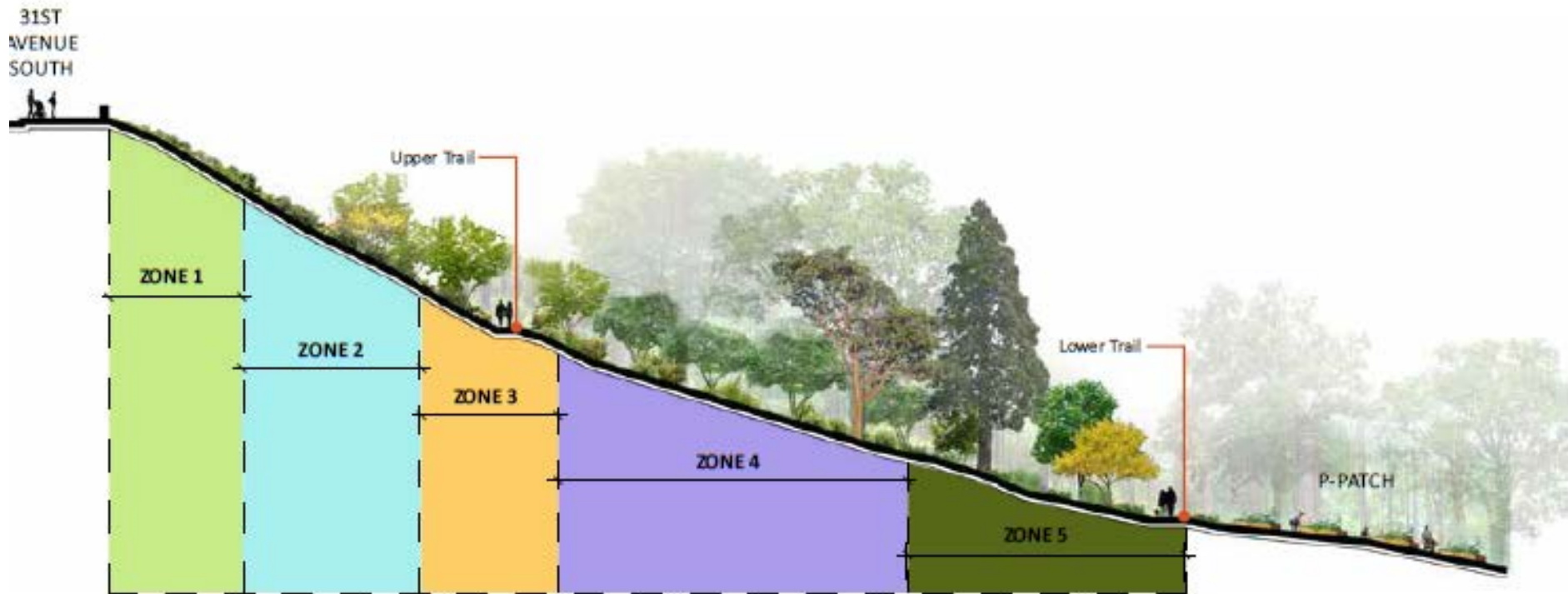
Lower Trail Upper Trail

Scale: 1" = 40'

North

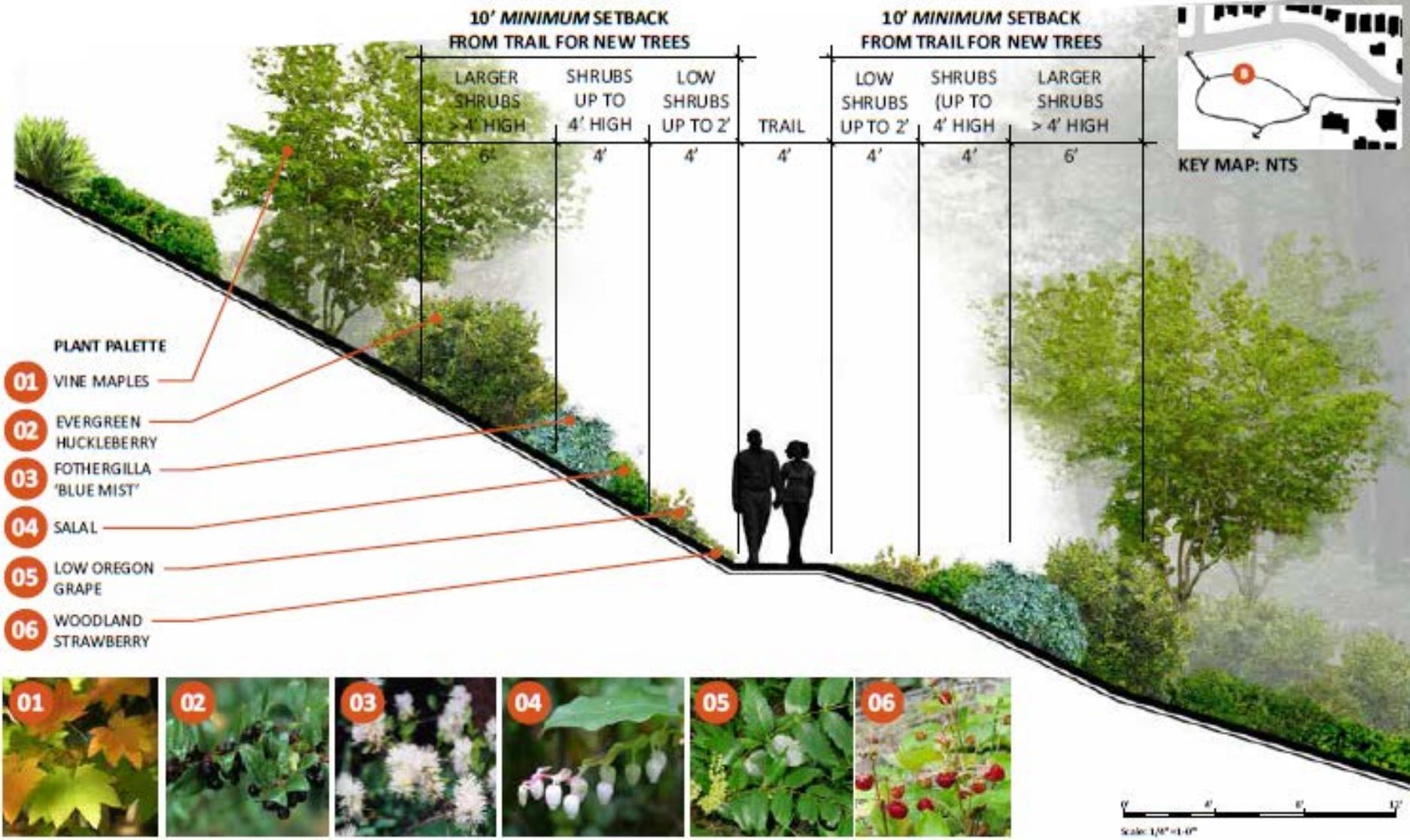
Proposed Vegetation Plan





Proposed Cross-Section





Proposed Cross-Section



Pamela Kliment, Neighborhood Planner

Jon Jainga, Urban Forestry Manager

Thank You!



Seattle
Parks & Recreation

healthy people healthy environment strong communities

