





SEATTLE PUBLIC UTILITIES SEATTLE TRANSPORTATION



100% OF THE LAND IN SEATTLE
BEFORE ...



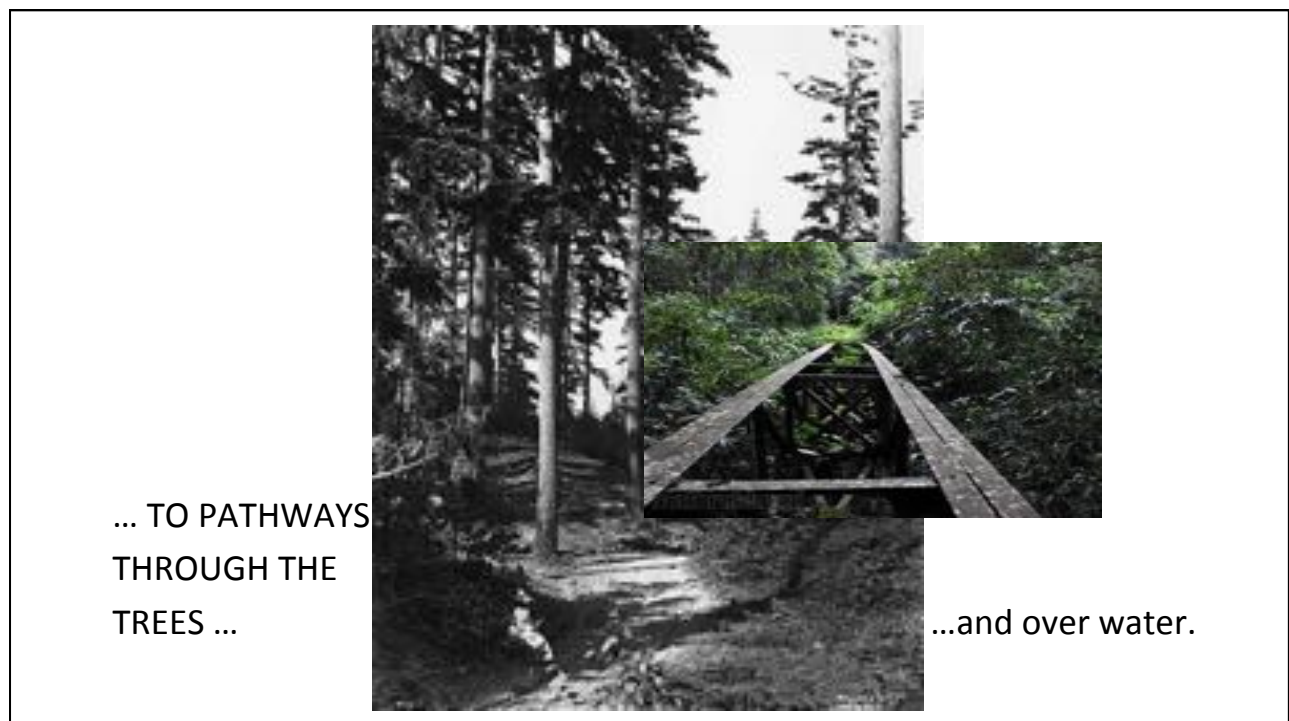
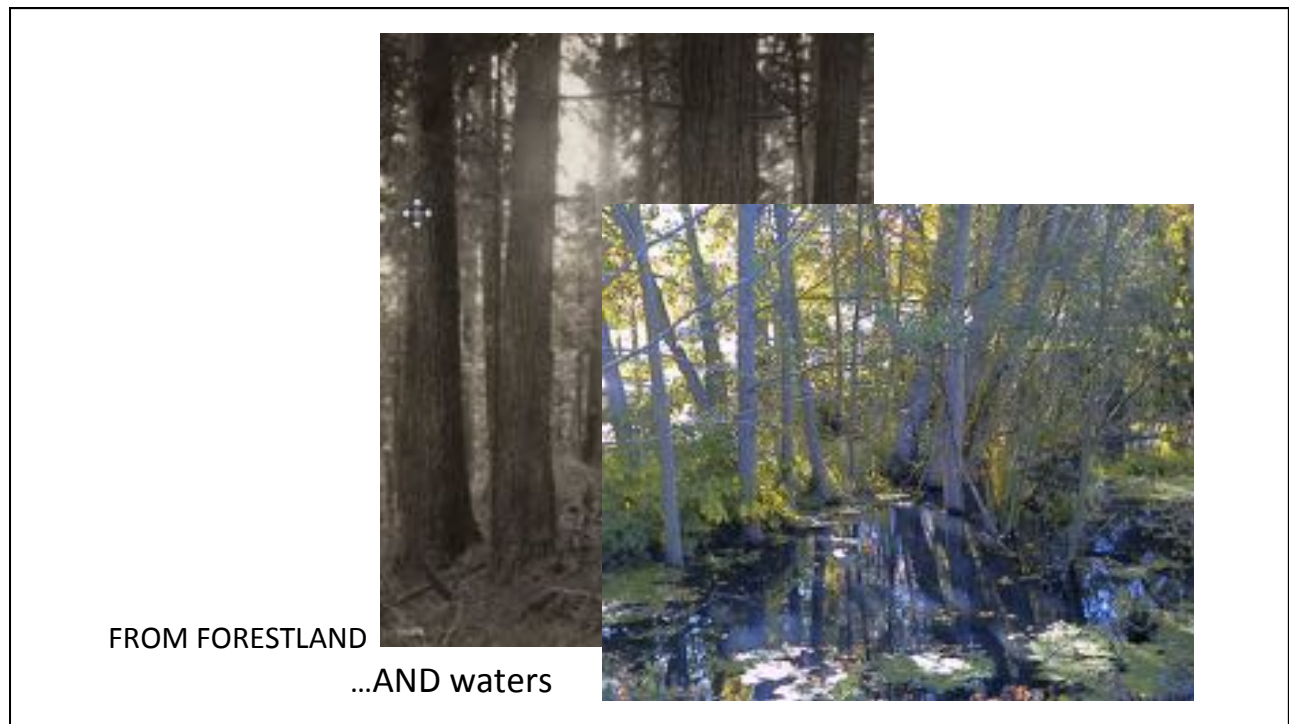
... AND AFTER



**20% of Seattle is Parks/Open space
or public owned lands.**

DESIGNATED BY
NATURE
protected for
WATER
QUALITY





TO
TIRE
TRACKS...

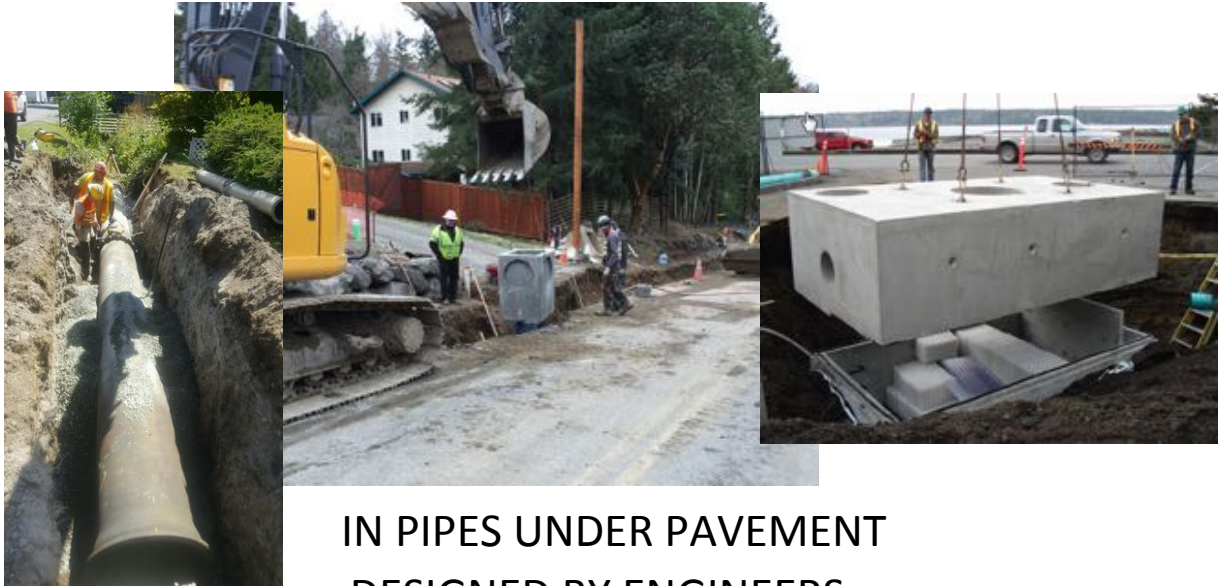


and then to ROADS.



...ROADS, RAILS
& UTILITES, ABOVE & BELOW





IN PIPES UNDER PAVEMENT
DESIGNED BY ENGINEERS...

..OR Through Preserved Forest—TREES, understory, & soil

DESIGNED BY NATURE



a combination of three methods ... MULTIDISCIPLINARY

1. Preserved Mature Trees & OPEN SPACE, 2. New Trees & Bioretention
3. Detention & Underground Infrastructure

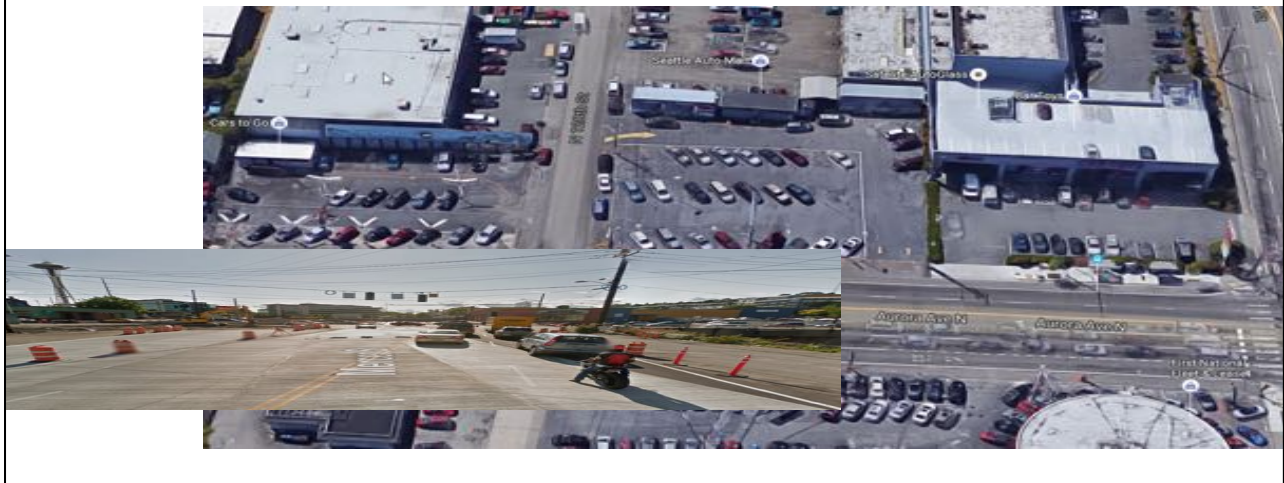


EXISTING CONDITIONS MATTER

URBAN WASTELAND RIPE FOR RENEWAL

HUGE opportunities: multidisciplinary stormwater & transportation solutions...

breaking news! It's no longer all about the cars.



URBAN FOREST OASIS

do no harm...
retain & protect



URBAN RESIDENTIAL

GOOD NEIGHBOR POLICY dictates unique, variable
MULTICULTURAL /MULTIDISCIPLINARY approaches



PROJECTS

PAST – Growing Vine Street

The Ave



PROJECTS past

SPU Natural Drainage Projects – SeaStreets
...then Broadview / Pinehurst Green Grid



PROJECTS present – **SPU projects - Thornton Creek Confluence Floodplain**



Thornton Creek Restoration Film

<https://vimeo.com/128652416>

PROJECTS **present** – Knickerbocker Floodplain



PROJECTS **present**– Midvale Detention Pond Forested wetland



PROJECTS

present –SPU Natural Drainage Projects
– Venema Creek, Ballard & Delridge



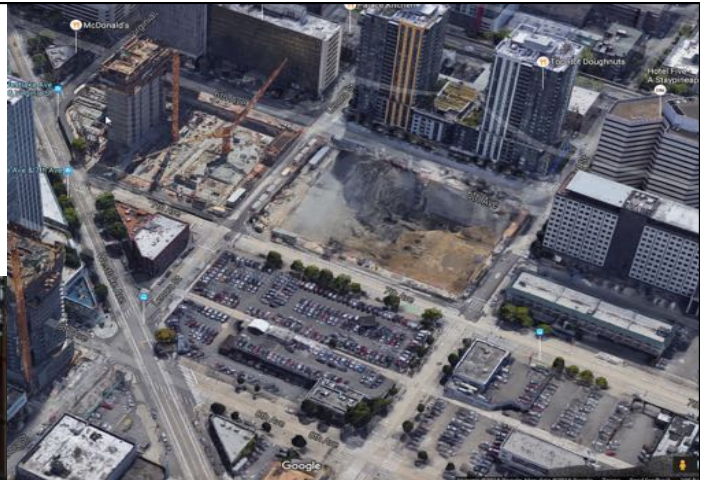
PROJECTS

present – MERCER CORRIDOR



PROJECTS

PRESENT
– AMAZON / SOUTH LAKE UNION



PROJECTS

FUTURE – SEATTLE CENTRAL WATERFRONT

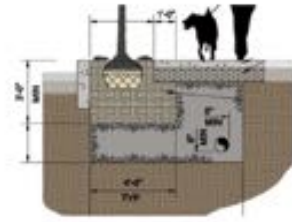


PROJECTS

FUTURE – SEATTLE CENTRAL WATERFRONT



Newly planted trees provide flow control in an urban environment by absorbing rain through their leaf system and roots, and allowing space for infiltration. Newly planted trees receive credits toward meeting flow control requirements.



Enhanced Tree Pits give trees roots more space allowing for large tree growth.



PROJECTS

FUTURE – SR 520



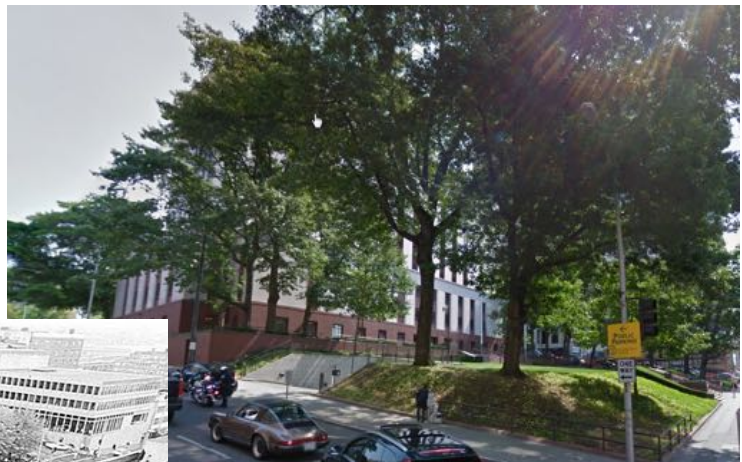
TREES the
COMMON
DENOMINATOR



SDOT TRANSIT makes room for TREES



THE FEDERAL
GOVERNMENT
...makes room for
TREES



THE FEDERAL
GOVERNMENT
...makes room for
TREES



NEW ORDINANCES
PRIORITIZE
&
PROTECT
TREES



NEW CONSTRUCTION PROTECTS TREES

Public Notice Posting for Street Trees

Effective 11/1/2017

The City of Seattle Department of Transportation (SDOT) requires posting for street trees as public notice regarding the preservation of and for removal and replacement of existing trees in the public Right-of-Way (ROW).



NEW CONSTRUCTION PROTECTS TREES



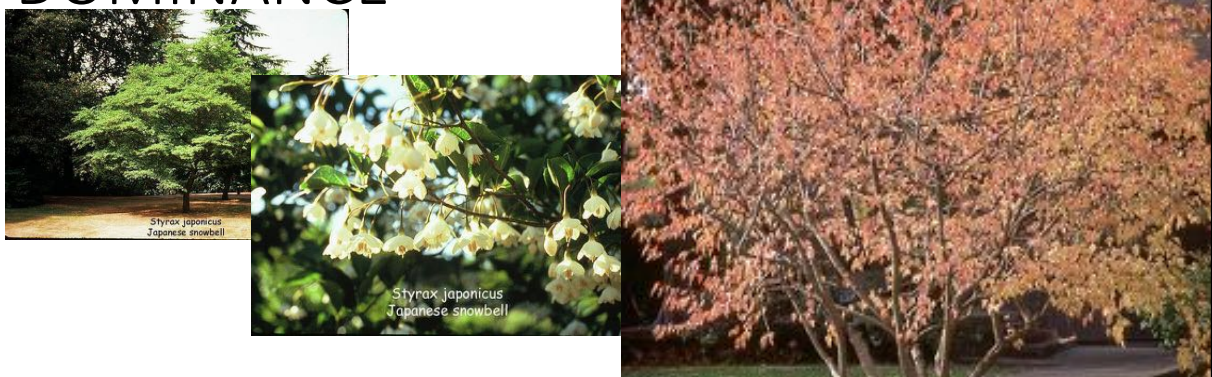
STREET TREES

&
deciduous
DOMINANCE



STREET TREES

& THE CHALLENGE TO LIMIT **SMALL SPECIES**
deciduous
DOMINANCE



CONIFERS WHEREEVER / WHENEVER WE CAN



Locations for **CONIFERS** to the ROW



Mercer / I-5

15th / Nickerson Interchange



1st Ave S Bridge /
Highland Park Way



SOIL not **DIRT**



