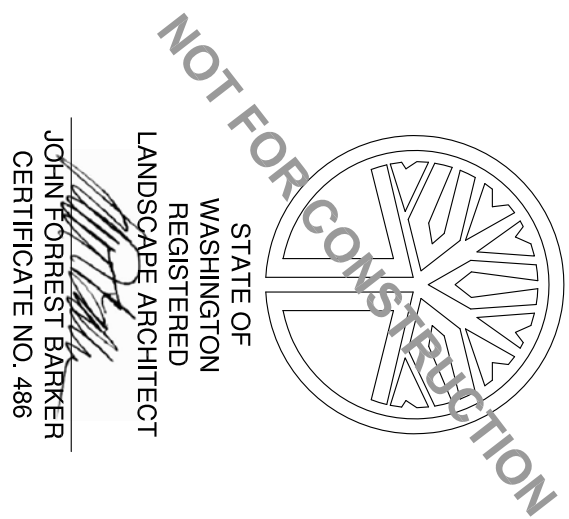


>>>>CAUTION - CALL 811<<<<
UTILITY NOTIFICATION CENTER
BEFORE YOU DIG!
WWW.CALLBEFOREYODIG.ORG

NOT LESS THAN 2 OR MORE THAN 10 BUSINESS DAYS PRIOR TO COMMENCING EXCAVATION OR DEMOLITION, SECURE THE SERVICES OF A COMMERCIAL UNDERGROUND UTILITIES LOCATOR SERVICE TO IDENTIFY BELOW-GROUND IMPROVEMENTS THAT MAY NOT BE INDICATED ON THE DRAWINGS. ADDITIONALLY, TO REQUEST ON-SITE UNDERGROUND UTILITY SYSTEMS LOCATES, CALL SPR INSPECTION REQUEST LINE @ (206) 684-7041. REFER TO SECTIONS 1000 AND 1001 OF THE SPECIFICATIONS FOR INSTRUCTIONS ON HOW TO PROCEED.



3	95% Preview Technical Review	4/29/18
2	Permit Set	3/11/18
1	Preview Re-submittal	1/19/18
NO.	REVISION — AS BUILT	DATE

REVIEWED: _____ DATE _____
PARK ENGINEER _____
All work done in accordance with the City of Seattle Standard Plans and Specifications in effect on the date shown above, and supplemented by Special Provisions.



BARKER
LANDSCAPE
ARCHITECTS
3002 NW 68th St.
Seattle, WA 98117
tel: 206/783.2870
fax: 206/783.3212



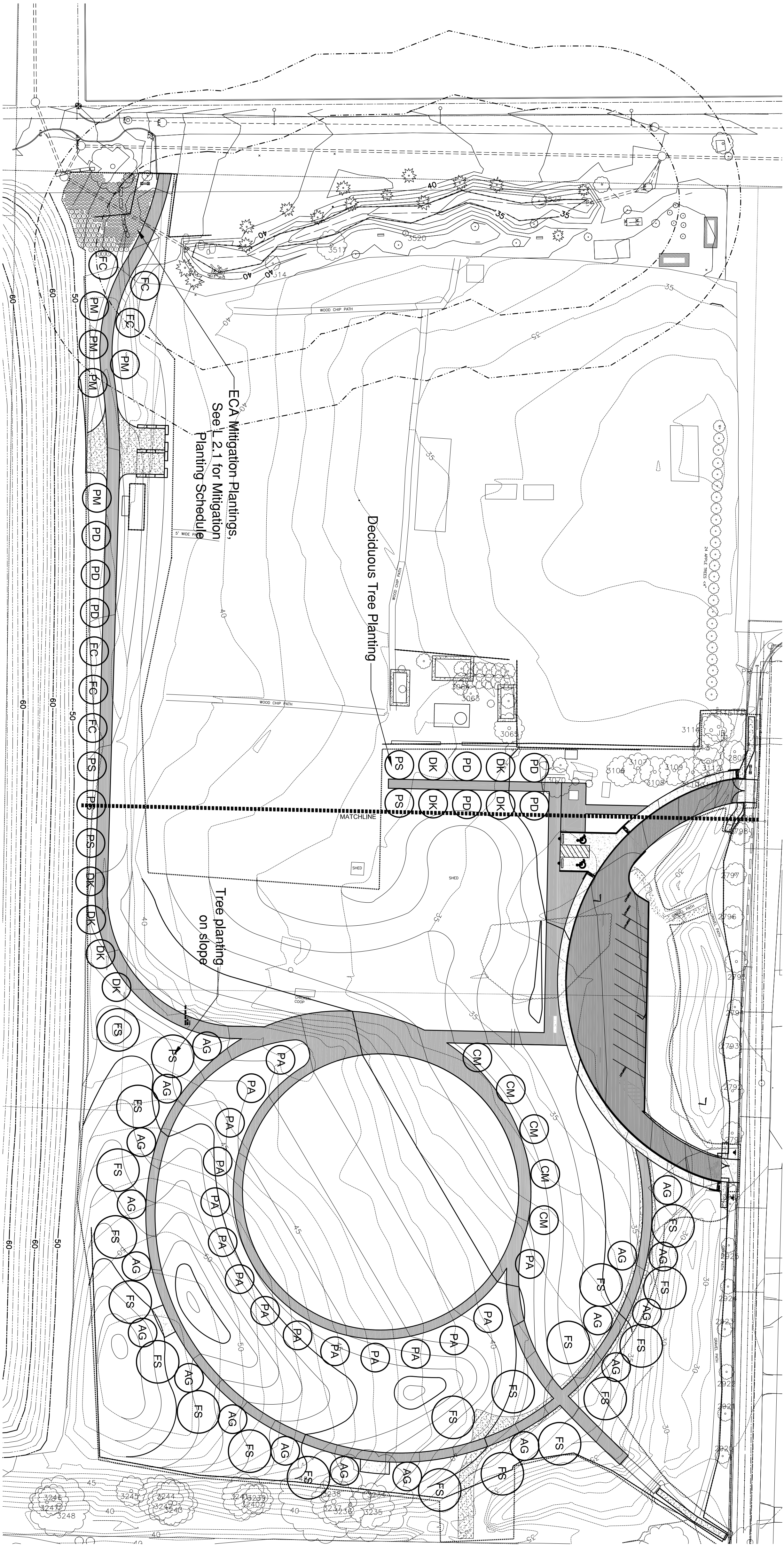
MARRA-DESIMONE PARK
DEVELOPMENT

PLANTING, OVERALL

Draft 100% CD Set

DESIGNED: NHM	DATE: 6/20/2016
DRAWN: NHM	SHEET: 24 OF 33
CHECKED: JFB	
ORIGINATOR: NO. 124590(2008 PJ)	
CONTRACT NO. 1927	
FW NO. 2016-065	
WC0100	

SCALE 40 PARKS FILE NUMBER FOR PARK USE ONLY



PLANT SCHEDULE

SYMBOL	SCIENTIFIC NAME	COMMON NAME	SIZE	QUANTITY
	Existing Trees, to Remain			84
AG	Amelanchier x grandiflora	Serviceberry 'Autumn Brilliance'	2" Cal.	18
PA	Pinus armeniaca 'Pugel Gold'	Pugel Gold Apricot	2" Cal.	15
CM	Cornus Mas 'Red Star'	Cornelian Cherry	2" Cal.	5
FC	Ficus carica	Desert King Fig	2" Cal.	6
PD	Pinus domestica '	Italian Plum	2" Cal.	7
PS	Pinus salicina 'Shiro'	Shiro Plum	2" Cal.	5
DK	Diospyros kaki 'Izu'	Japanese Persimmon	2" Cal.	8
PM	Pinus mume 'Peggy Clark'	Japanese Flowering Apricot	2" Cal.	5
FS	Fagus sylvatica purpurea	Beech Tree	2" Cal.	21
*	Shrub Plantings	Natives / Sensory	2-gallon	0
	Lawn Area	Seed Mix, Per SPR	Hydroseed	40,420 SF
	Low Maint. Turf Area	Eco-Turf	Hydroseed	42,424 SF
	Mitigation Planting	See L2.1	1-gallon	313

They shall be full, well-branched, well-proportioned, and have a vigorous, well-developed root system. All plants shall be hardy under climatic conditions similar to those in the locality of the project.

B. Trees, shrubs, and ground cover: Quantities, species, and varieties, sizes and conditions as shown on the planting plan. Plants to be healthy, vigorous, well-foliated when in leaf. Free of disease, injury, insects, decay, harmful defects, and all weeds. No substitutions shall be made without written approval from owner and landscape architect.

10. Soils in planting areas shall have adequate porosity to allow root growth. All heavily compacted soils shall be loosened to increase aeration to a minimum depth of eighteen (18) inches or to the depth of the largest plant root ball, whichever is greater. Imported topsoil and/or compost shall be tilled into existing soils to prevent a distinct soil interface from forming. After soil preparation is completed, motorized vehicles shall be kept off to prevent excessive compaction and underground pipe damage. The organic content of soils in any landscape area shall be as necessary to provide adequate nutrient and moisture-retention levels for the establishment of plantings.

11. Required plantings, except turf or areas of established ground cover, shall be covered with three inches of organic mulch to minimize evaporation and runoff. Mulch shall consist of materials such as yard waste, sawdust, and/or manure that are fully composted.

12. All mulches used in planter beds shall be kept at least six (6) inches away from the trunks of shrubs and trees.

13. All required landscaped areas, particularly trees and shrubs, must be protected from potential damage by adjacent uses and development, including parking and storage areas. Protective devices such as bollards, wheel stops, trunk guards, root guards, etc., may be required in some situations.

Planting Notes:

- Contractor shall be responsible for familiarizing themselves with all other site improvements and conditions prior to starting any landscape work.
- Contractor shall use caution while excavating to avoid disturbing any utilities encountered. Contractor is to promptly advise owner of any disturbed utilities.
- Contractor to water all plant material to ensure plant survival after delivery, during installation, and up until acceptance by owner.
- Contractor shall be responsible for computing specific quantities of ground covers and plant materials utilizing on-center spacing for plants as stated on the landscape plan and minimum planting distances as specified in these notes.
- All planting areas to be cleared of all construction materials and rocks and sticks larger than 2" diameter.
- See specs for soil amendment installation for new lawn and landscape areas.
- Landscape shall be provided in accordance with local landscape code.
- Plants shall be selected and sited to produce a hardy and drought-resistant landscape area. Selection shall consider soil type and depth, the amount of maintenance required, spacing, exposure to sun and wind, and the proposed slope and contours of the site.
- All plant material shall conform to ANSI standards for nursery stock, latest edition. Any replacements to be made at once.
- General: All plant material furnished shall be healthy representatives, typical of their species of variety and shall have a normal growth habit.