

Trees & Sidewalks Operations Plan



Urban Forestry Commission
Justin Martin and Darren Morgan
June 3, 2015

Our Mission, Vision, and Core Values

Mission: deliver a high-quality transportation system for Seattle

Vision: connected people, places, and products

Committed to **5 core values** to create a city that is:

- Safe
- Interconnected
- Affordable
- Vibrant
- Innovative

Presentation Overview

- Review project purpose, goals and assessment process
- Share feedback and related changes
- Madrona plans and construction update
- Next steps

Project Purpose

- Develop options to address conflicts
- Use case studies to illustrate applications



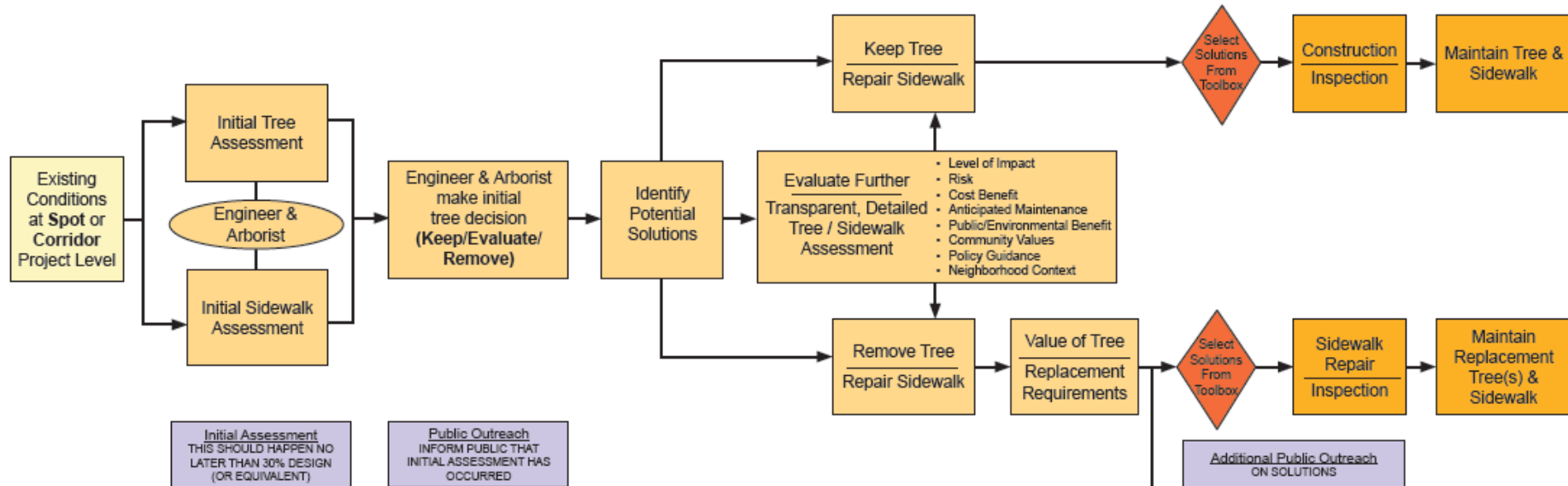
Project Goals

- Accessibility & health
- Environment
- Equity
- Efficiency

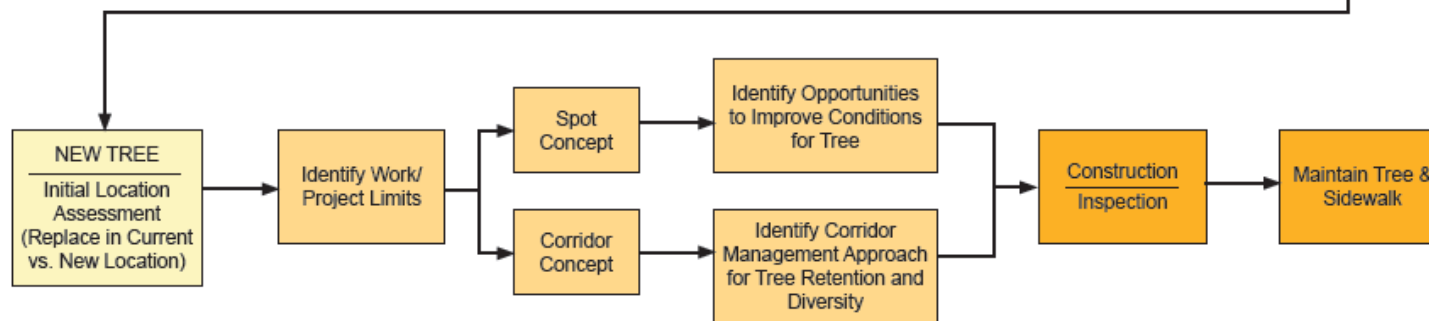


Assessment Process

EXISTING TREES - RETROFIT / REPAIR



NEW TREES - NEW / REPLACEMENT

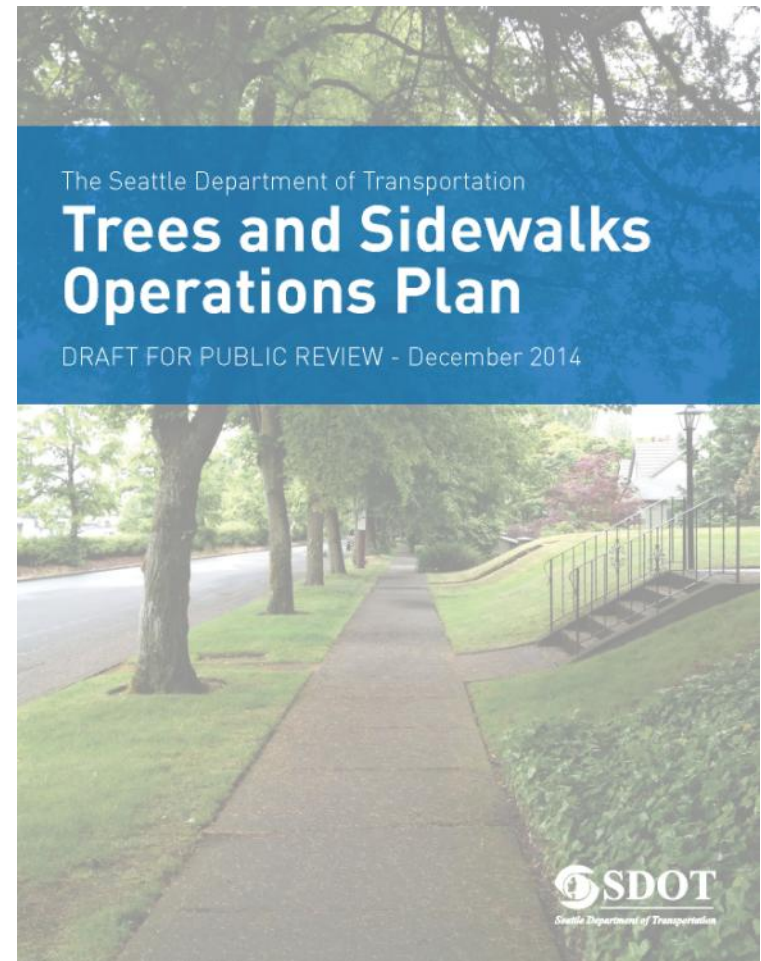


Solutions Toolkit

TREE			TREE-BASED	
	P	R	Root Pruning.....	2
ROOT			ROOTZONE-BASED	
	P	R	Root Barriers	3
DESIGN			INFRASTRUCTURE-BASED / DESIGN	
	P	R	Tree Pit Sizing	4
	P	R	Curving Sidewalk.....	5
	P	R	Curb Bulbs.....	6
	P	R	Pavement Thickness	7
	P	R	Easement	8
	P	R	Curb Realignment.....	9
	P	R	Bridging	10
MATERIAL			INFRASTRUCTURE-BASED / MATERIALS	
	P	R	Pervious Concrete	11
	P	R	Asphalt.....	12
	P	R	Composite Pavers	13
	P	R	Grind Edge	14
	P	R	Shims.....	15

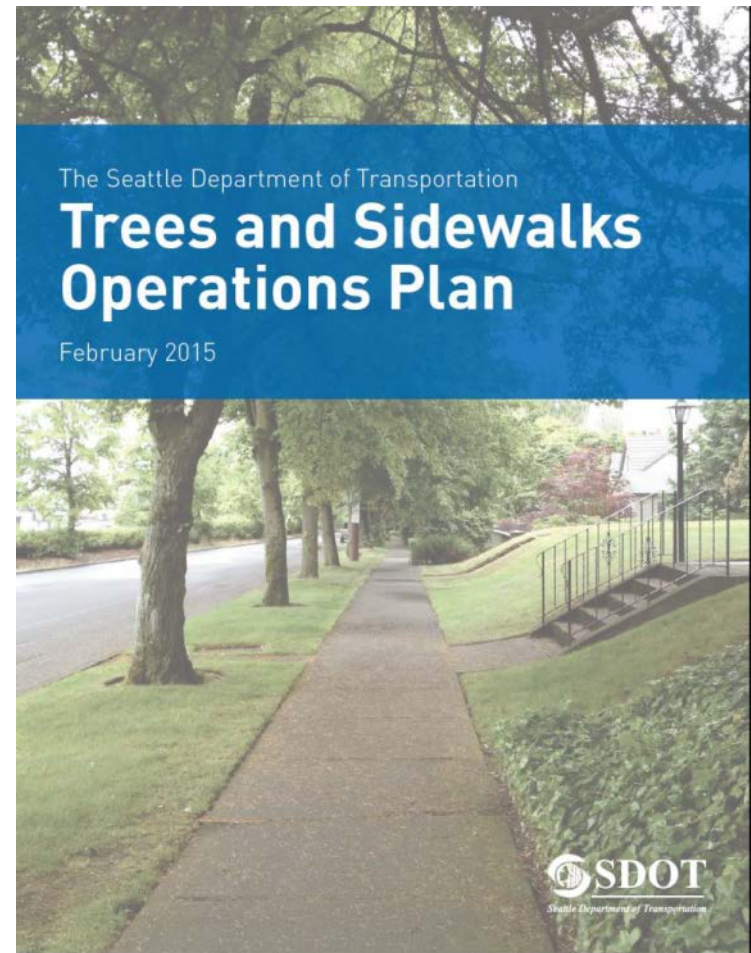
The Draft Plan: Public Comment

- Public comment received and incorporated
- Included comments from:
 - Urban Forestry Commission
 - Feet First
 - Community members
 - Additional internal SDOT reviewers



The Final Plan: Director's Rule

- Adopted as SDOT Director's Rule, February 2015



306

340

E N

Proposed Inlet

6" storm

12" water

school

church

parking lot

10/1/00

New Opportunities



Next Steps

2015	Madrona project construction
2015	23 rd Ave Phase 1
2015	Sidewalk spot repairs ongoing

Questions?

darren.morgan@seattle.gov | (206) 233-7829

<http://www.seattle.gov/transportation/treesandsidewalks.htm>

<http://www.seattle.gov/transportation>

