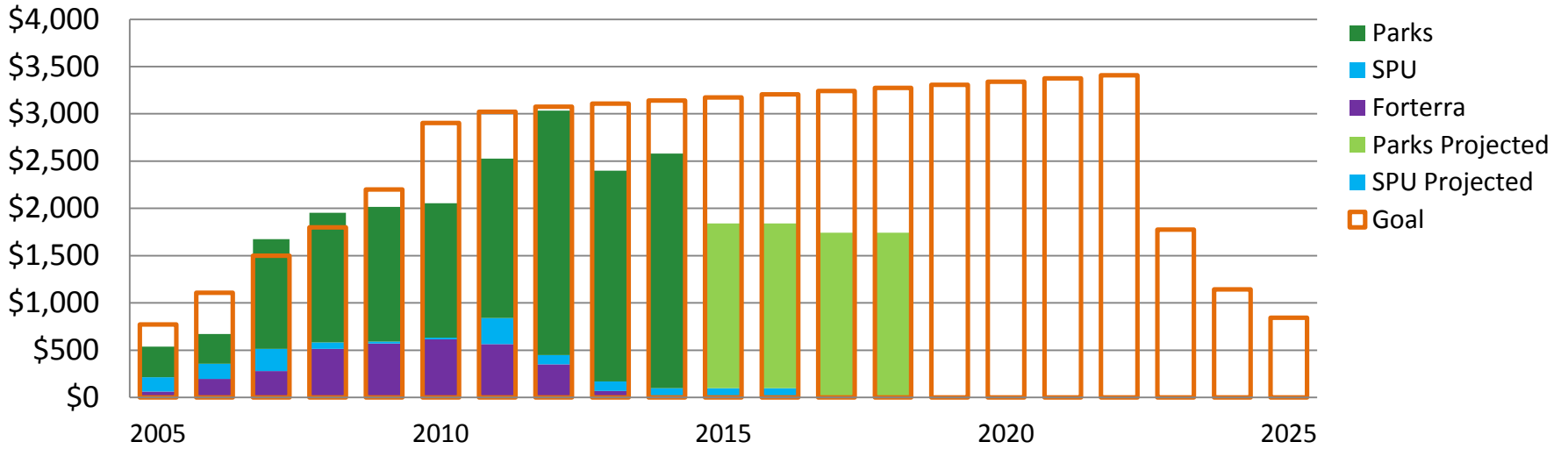
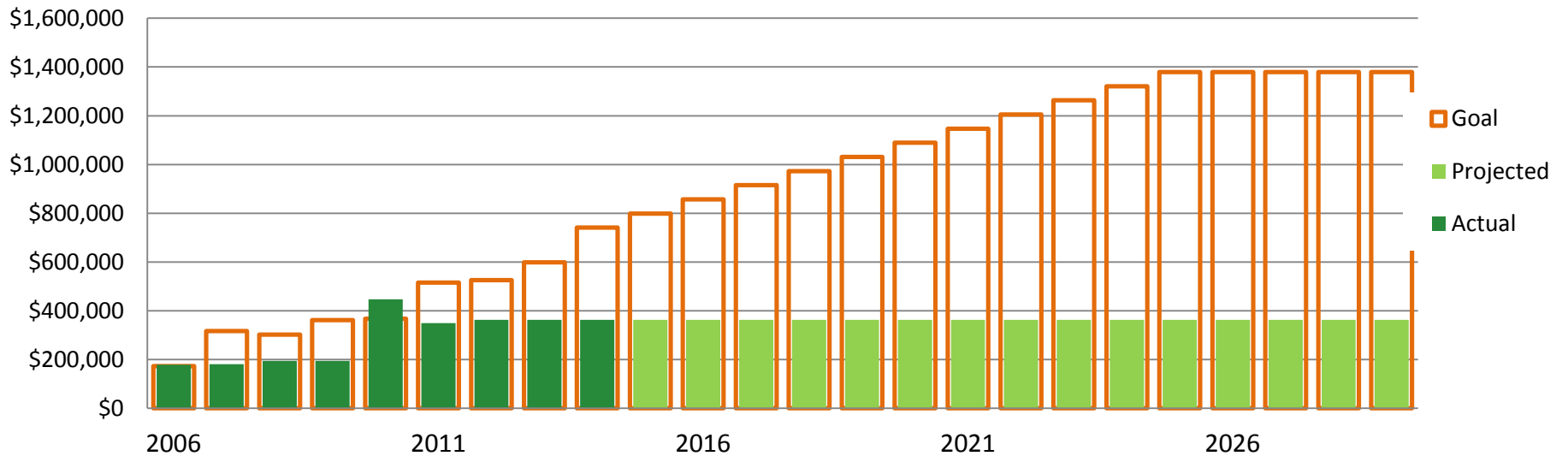


GSP Capital Investment Goal and Actuals

(in \$1,000)

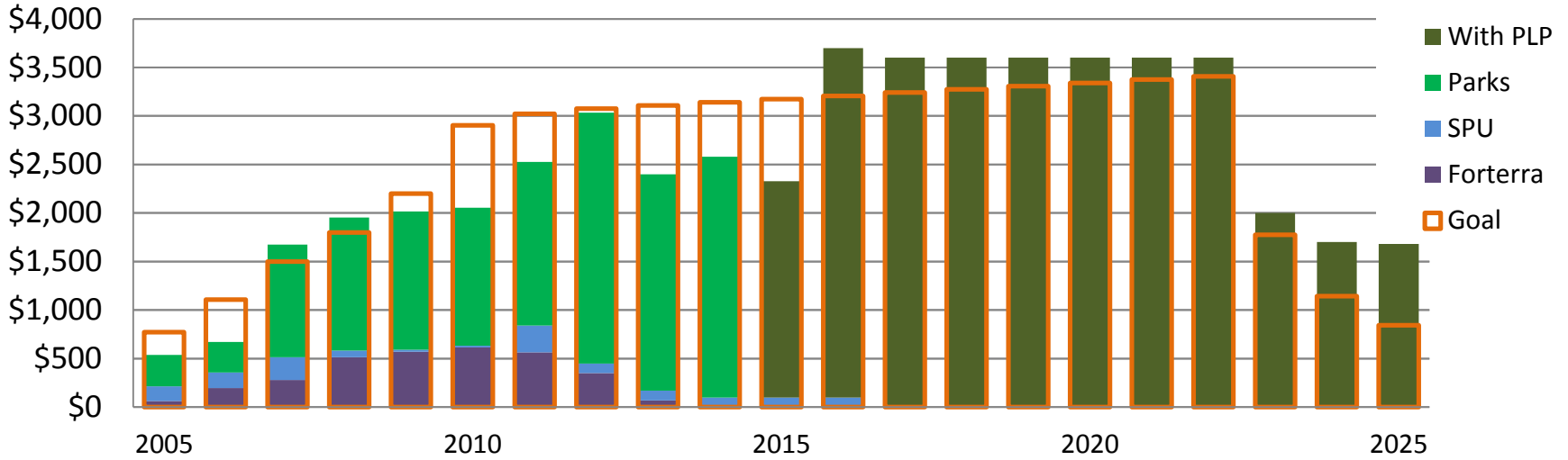


GSP Maintenance Goal and Actuals

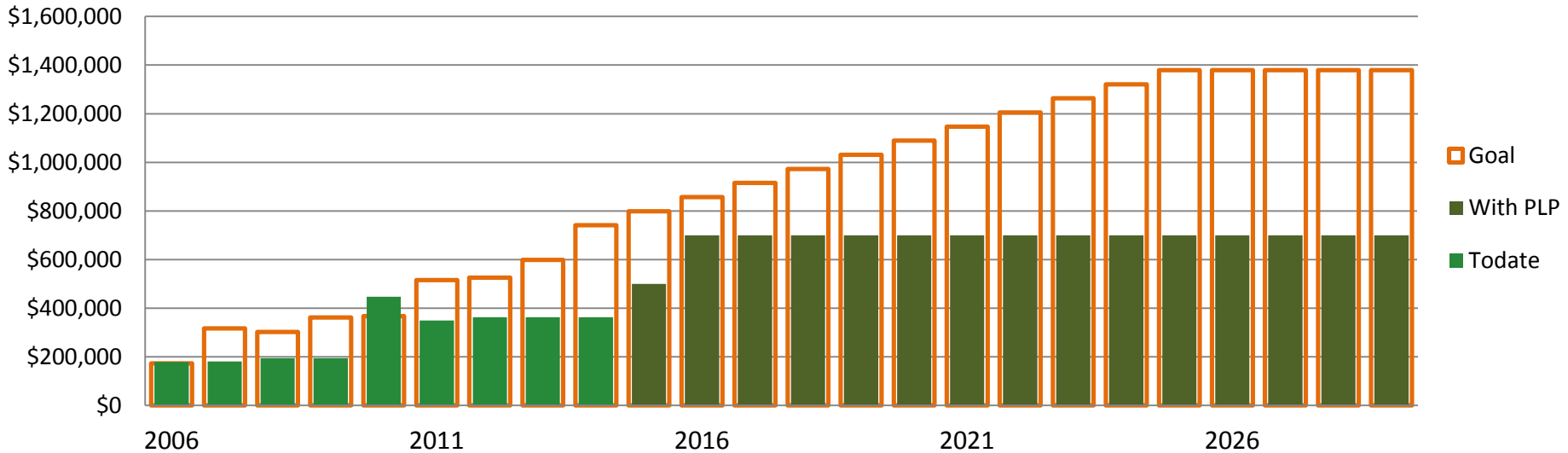


GSP Capital Investment Goal with PLP

(in \$1,000)

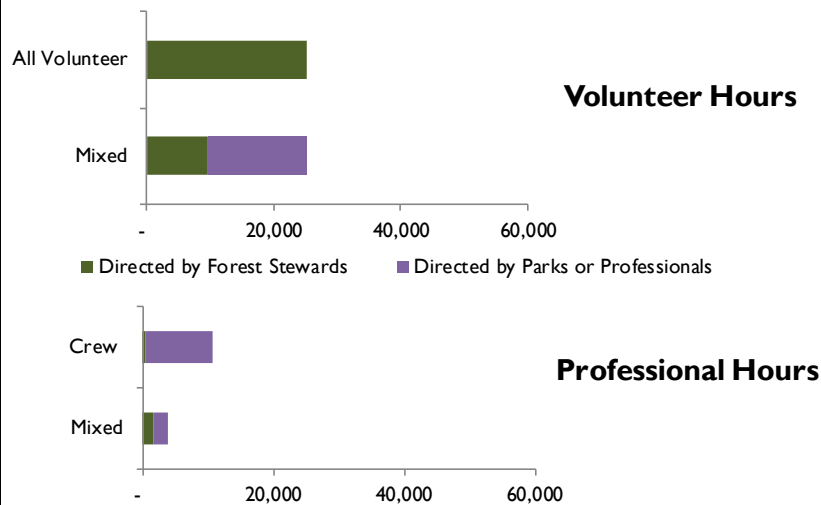


GSP Maintenance Goal with PLP

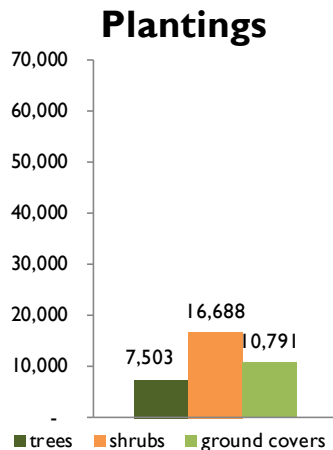


Reported Hours in the Field

Event Types	Volunteer Hours	Professional Hours
All Volunteer	25,197	
Mixed		
Led by Professionals	15,536	2,295
Led by Forest Stewards	9,670	1,642
Mixed Total	25,206	3,936
Crew		
Hired by Parks or Other Partners		10,406
Hired by Forest Stewards		300
Crew Total		10,705
Grand Total	50,404	14,642



Reported Tasks Accomplished

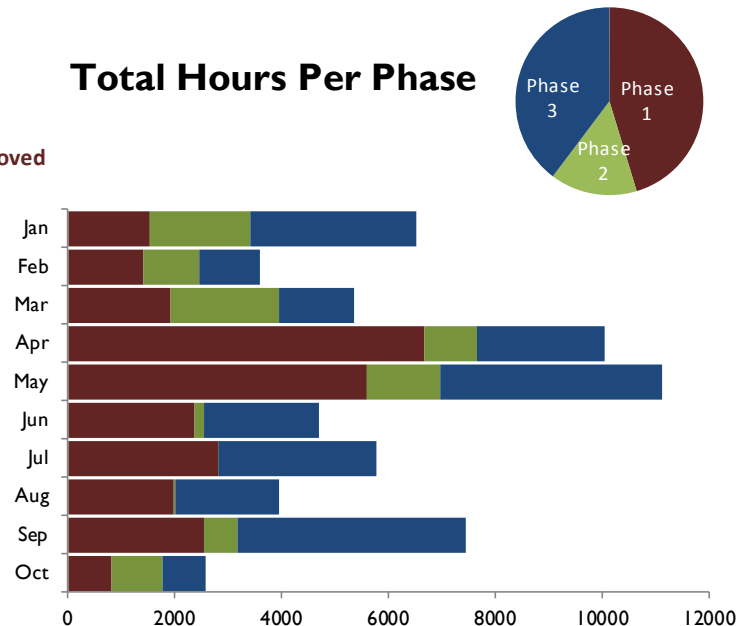


Phase 1
 27,651 hours of phase 1 work
 38.57 acres invasive species removed
 4,510 survival rings cut

Phase 2
 9,133 hours of phase 2 work
 7,503 trees planted
 16,688 shrubs planted
 10,791 ground covers planted
 34,982 total plants planted

Phase 3
 24,239 hours of phase 3 work
 9 acres mulched
 159 acres weeded
 15,599 plants watered

Total Hours Per Phase



GSP Acreage Enrollment

